



WATER BOOSTER PUMP STATION

- Planning Commission
- City Council

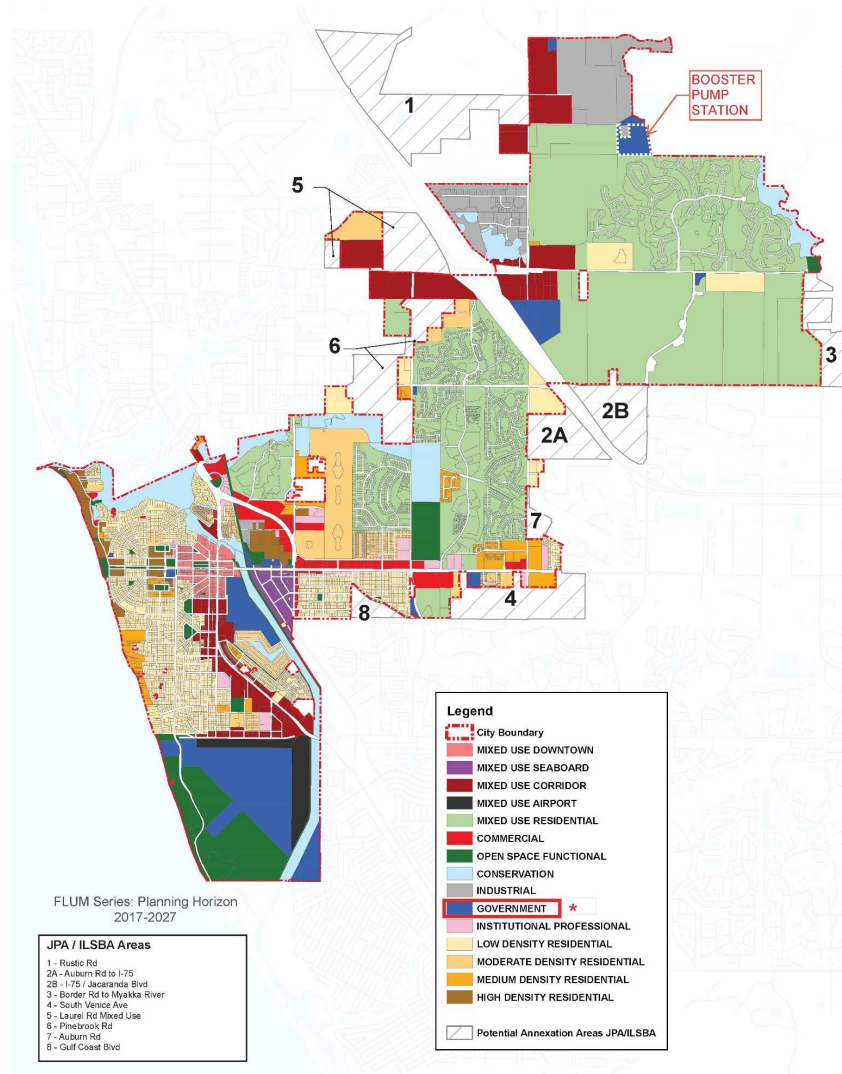
Public Hearings

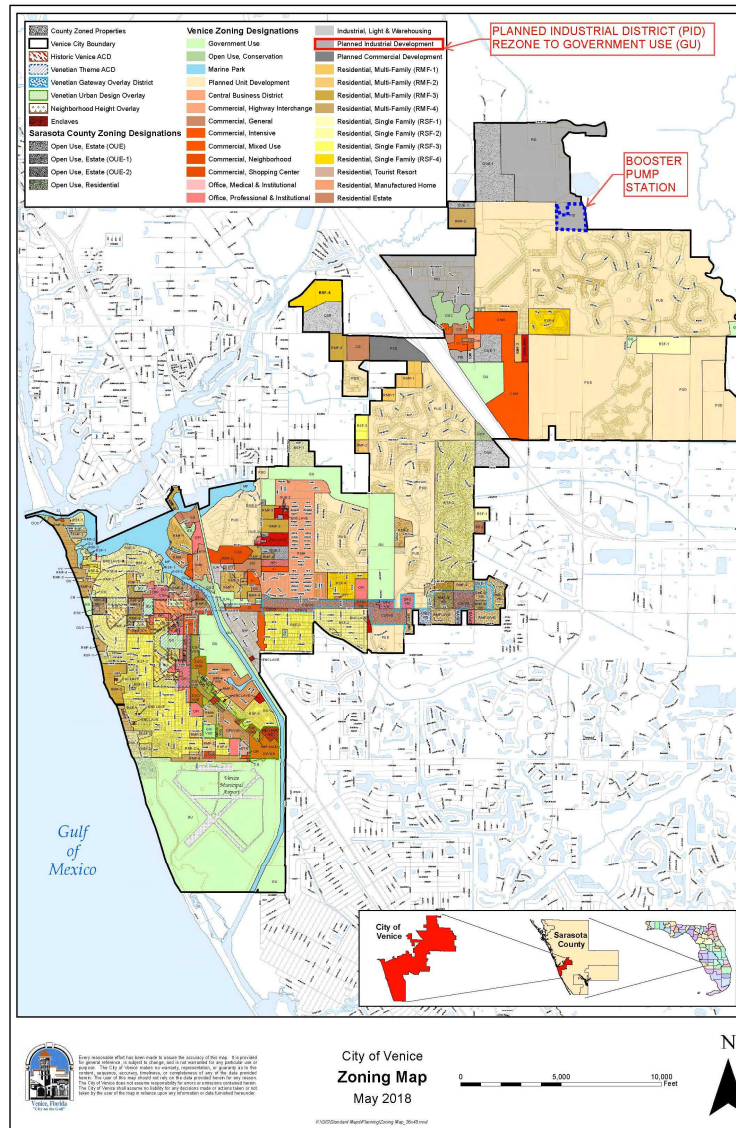
*For rezoning, special exception
and site and development plan*

September 2021

www.venicewaterboosterstation.com









	INITIALS	DATE
DESIGN		
DRAWN	CINTRON	02/27/20
CHECKED		
QUALITY CHK		
SCALE		

MARK A. ADLER, PE No. 37799

DATE



George F. Young, Inc.

10540 PORTAL CROSSING, SUITE 105 LAKEWOOD RANCH, FLORIDA 34211-4913
PHONE (941) 747-2881 FAX (941) 747-7234 WWW.GEORGEF.YOUNG.COM
ENGINEERING CERTIFICATE OF AUTHORIZATION NUMBER 21
CIVIL & TRANSPORTATION ENGINEERING | ECOLOGY | GIS | LANDSCAPE ARCHITECTURE
PLANNING | SURVEYING | SUBSURFACE UTILITY ENGINEERING

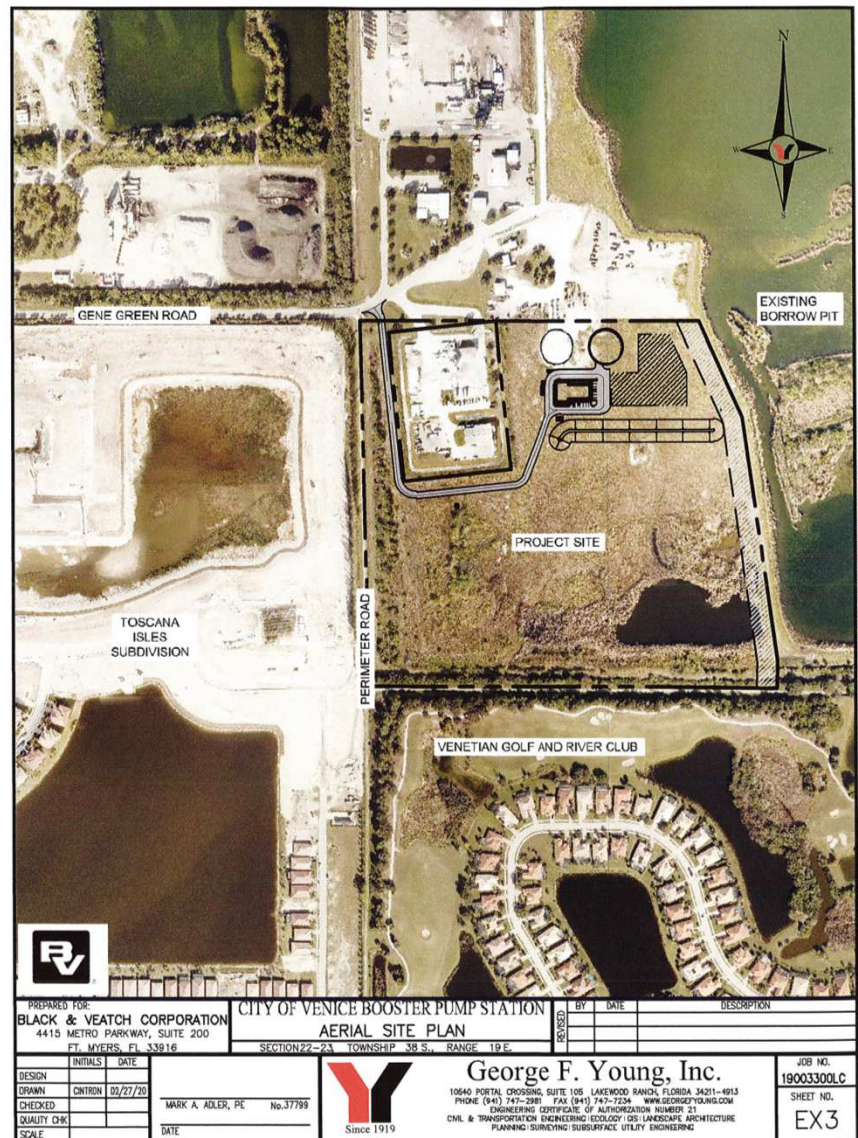
CITY OF VENICE BOOSTER PUMP STATION AERIAL LOCATION MAP


SECTION 22-23 TOWNSHIP 38 S., RANGE 19 E.
PREPARED FOR: **BLACK & VEATCH CORPORATION**
4415 METRO PARKWAY, SUITE 200
FT. MYERS, FL 33916

JOB NO.
19003300LC

SHEET NO.

EX2



PREPARED FOR: BLACK & VEATCH CORPORATION 4415 METRO PARKWAY, SUITE 200 FT. MYERS, FL 33916		CITY OF VENICE BOOSTER PUMP STATION		BY	DATE	DESCRIPTION
		AERIAL SITE PLAN		REVISED		
		SECTION 22-23 TOWNSHIP 38 S., RANGE 19 E.				
DESIGN	INITIALS	DATE				
DRAWN	CWTRON	03/27/20				
CHECKED						
QUALITY CHK						
SCALE						
			 Since 1919	George F. Young, Inc. 10640 POSTAL CROSSING, SUITE 105 LAKEWOOD RANCH, FLORIDA 34211-4913 PHONE (941) 747-2881 FAX (941) 747-7234 WWW.GEORGEYOUNG.COM ENGINEERING CERTIFICATE OF AUTHORIZATION NUMBER 21 CIVIL & TRANSPORTATION ENGINEERING (EC00001) CIVIL & LANDSCAPE ARCHITECTURE PLANNING/SURVEYING/SUBSURFACE/UTILITY ENGINEERING		
				JOB NO. 19003300LC	SHEET NO. EX3	

FILE: E:\PROJECT\GIS\2019\19003300LC\Draw\Exhibit\19003300LC-ASP.dwg
LDATE: 03/27/2020 3:53 PM
PLOTED: 10/27/2020 3:53 PM



NORTHWEST PERSPECTIVE



SOUTHEAST PERSPECTIVE

FINAL DESIGN - NOT FOR CONSTRUCTION

GENERAL ARCHITECTURAL NOTES

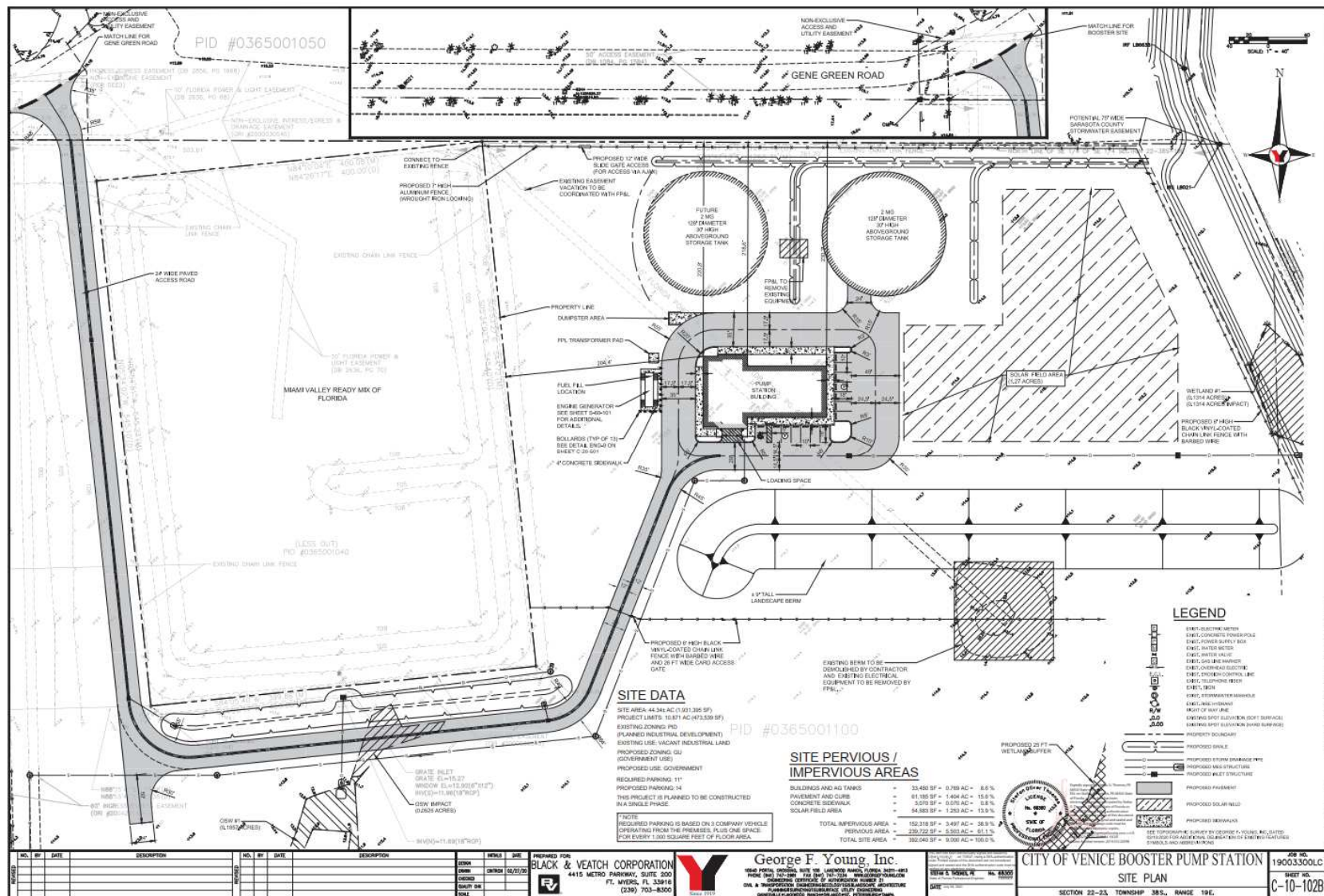
1. PERSPECTIVE VIEWS ARE FOR GENERAL REFERENCE ONLY
2. FOR ARCHITECTURAL SYMBOL, LEGEND, SEE PLAN DRAWING C-40-102 AND FOR ARCHITECTURAL ABBREVIATIONS SEE DRAWING A-40-501
3. SEE STRUCTURAL DRAWINGS FOR EQUIPMENT PADS AND FOUNDATIONS FOR ALL STRUCTURES, CULVERTS & DRIVEWAYS
4. FOR EXTERIOR LIGHT FIXTURES SEE ELECTRICAL DRAWINGS.
5. BUILDING HEIGHT HAS BEEN DETERMINED BASED ON SECTION 86-30 FROM THE LAND DEVELOPMENT CODE FROM THE CODE OF ORDINANCES FOR THE CITY OF VERO BEACH, WHICH STATES:
"BUILDING HEIGHT SHALL BE THE HIGHEST POINT OF THE BUILDING DISTANCE MEASURED FROM THE UPRATER OF THE CURB TO THE TOP OF THE ROOF. THE HEIGHT SHALL BE MEASURED 18 INCHES ABOVE THE FLORIDA DEPARTMENT OF TRANSPORTATION'S (FDOT) FINISHED GRADE. THE FIRST HABITABLE FLOOR STRUCTURAL SUPPORT, 18 INCHES ABOVE THE FINISHED GRADE, SHALL BE THE HIGHEST POINT OF THE ROADS. ON THE AVERAGE, NATURE GRADE UNALTERED BY ANY CONSTRUCTION SHALL BE THE HIGHEST POINT OF ANY NON-EXEMPT APURTANCE ATTACHED TO THE ROOF." THE FIRST DEFINITION CORRESPONDING TO THIS CODE REQUIREMENT IS A CATEGORY II HURRICANE WIND RESISTANT FOR THE CITY OF VERO BEACH.

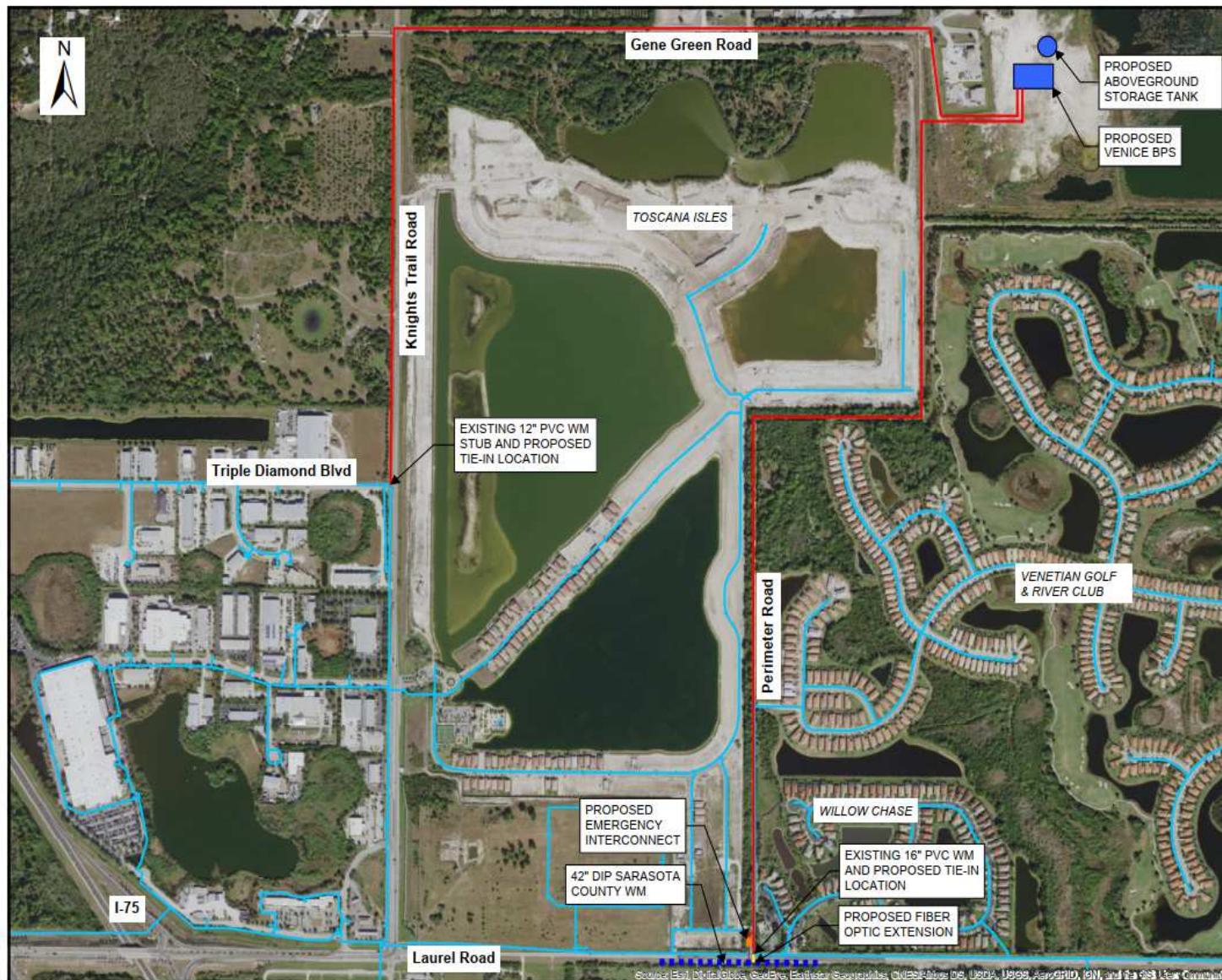
[illegible]

Black & Veatch Architects, PLLC
Florida Registered
License Number: AA2600279

CITY OF VENICE
NEW WATER BOOSTER PUMP STATION

DESIGNED: PDR
DETAILED: DAY
CHECKED: DJT
APPROVED:
DATE: MAY 2021
 <p>IF THIS BAR DOES NOT MEASURE 1" THEN DRAWING IS NOT TO FULL SCALE</p>
PROJECT NO. 403737
A-40-001





OFFSITE UTILITIES FOR THE NEW VENICE BOOSTER PUMP STATION

LEGEND

- CITY OF VENICE EXISTING POTABLE WATER INFRASTRUCTURE
- PROPOSED OFFSITE 16" POTABLE WATER PIPELINE
- PROPOSED FIBER OPTIC EXTENSION
- EXISTING SARASOTA COUNTY 42" WM
- PROPOSED EMERGENCY POTABLE WATER INTERCONNECT

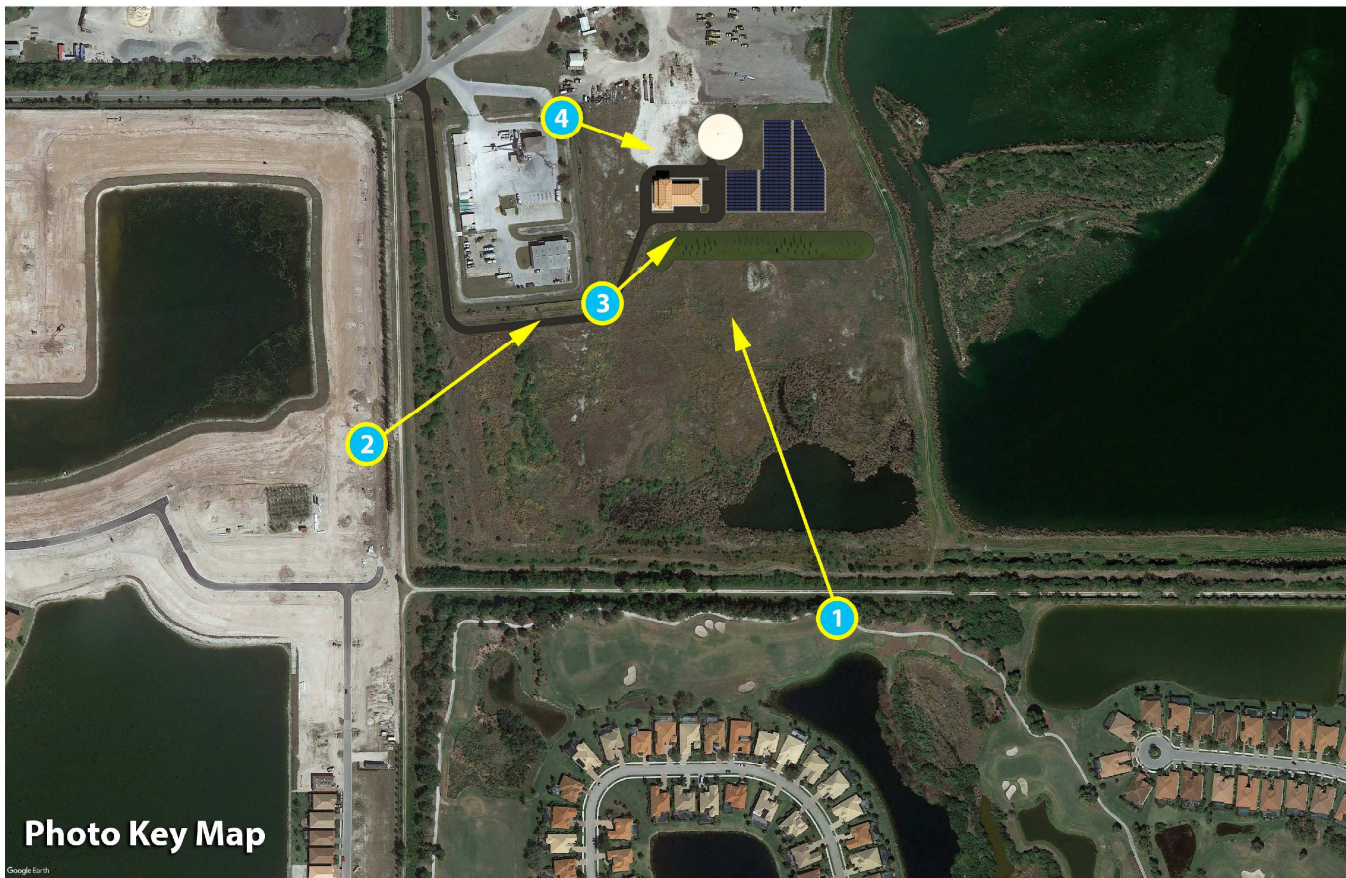
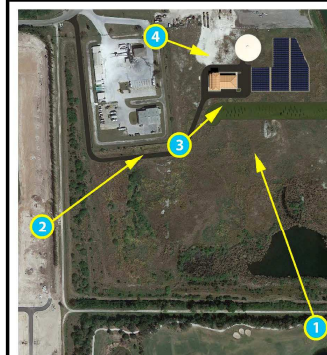


Photo Key Map

VENICE NEW
WATER BOOSTER
PUMP STATION



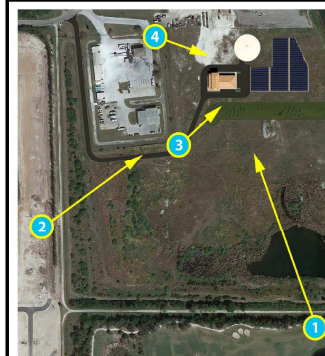
VENICE NEW
WATER BOOSTER
PUMP STATION





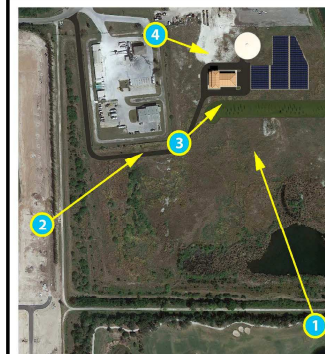
2 Toscana Isles Sub-Division View

VENICE NEW WATER BOOSTER PUMP STATION





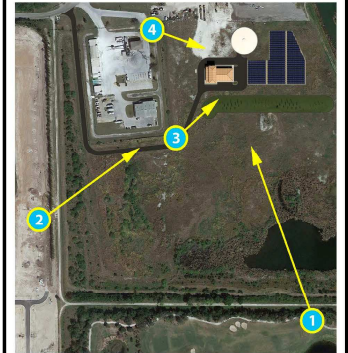
VENICE NEW WATER BOOSTER PUMP STATION





4 BPS Facility

VENICE NEW
WATER BOOSTER
PUMP STATION





Question & Answer Segment

