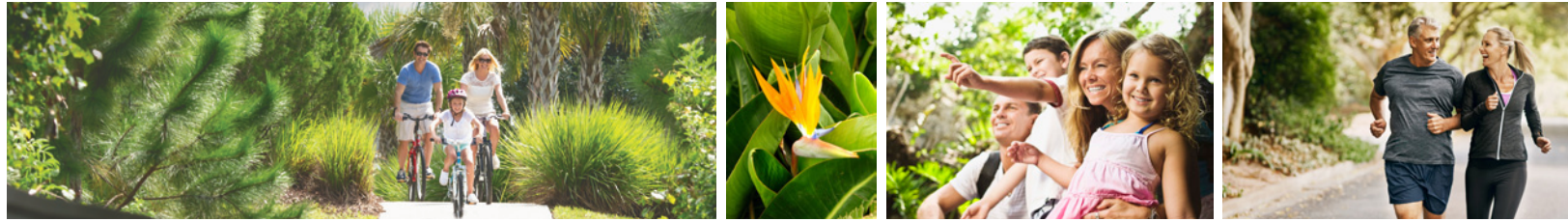


LAUREL ROAD

EXPANSION

PROGRESS REPORT
9/14/2021

Presented by:
THE ECONOMIC STIMULUS WORKING GROUP



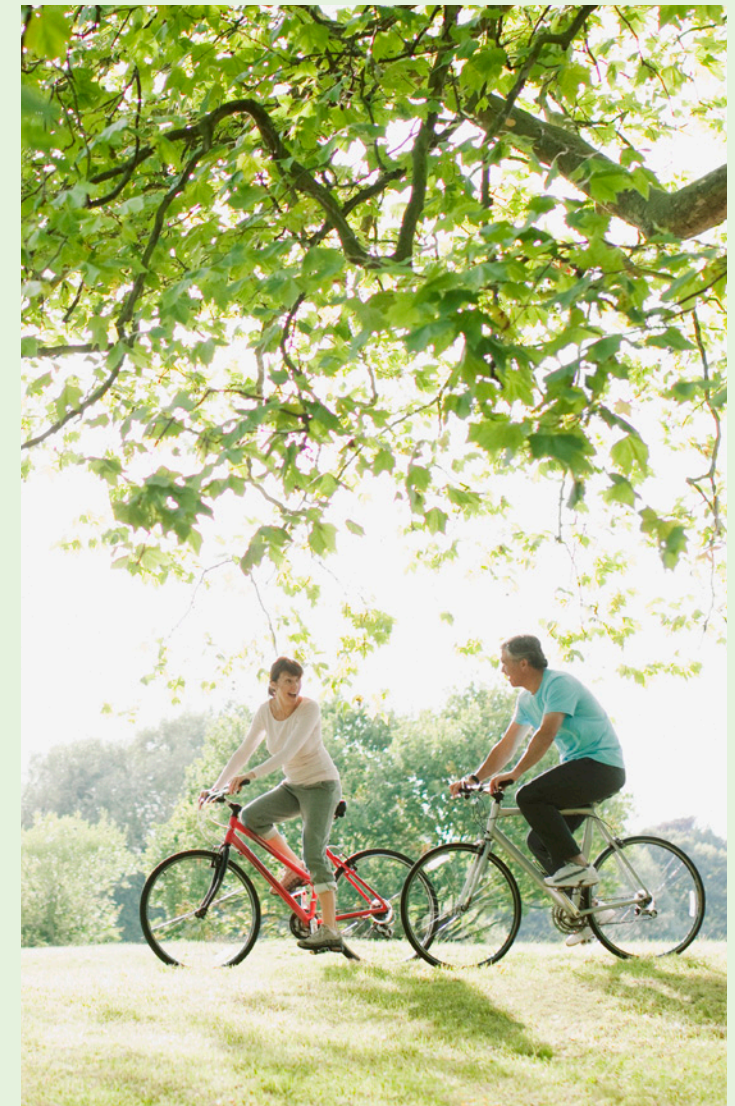
LAUREL ROAD EXPANSION

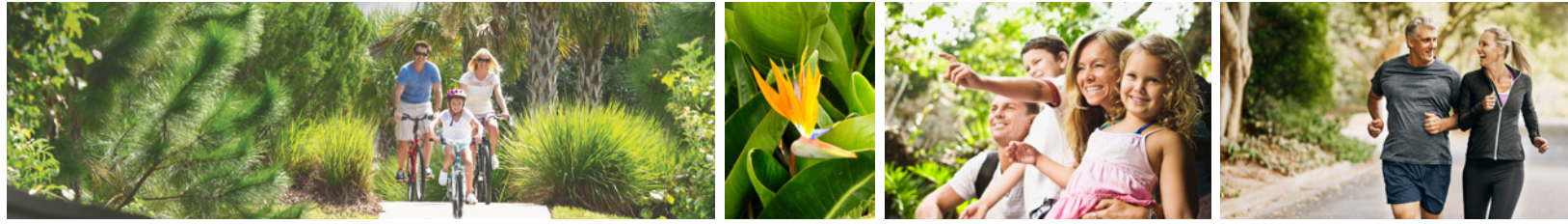
PROGRESS REPORT

OBJECTIVES OF THIS MEETING

- To bring you up to date on the engineering design
- To lay out the budget for the construction of Laurel Road
- To lay out the budget for the Linear Park

To ask you to authorize the **completion of engineering** to get Laurel Road shovel ready for the funding

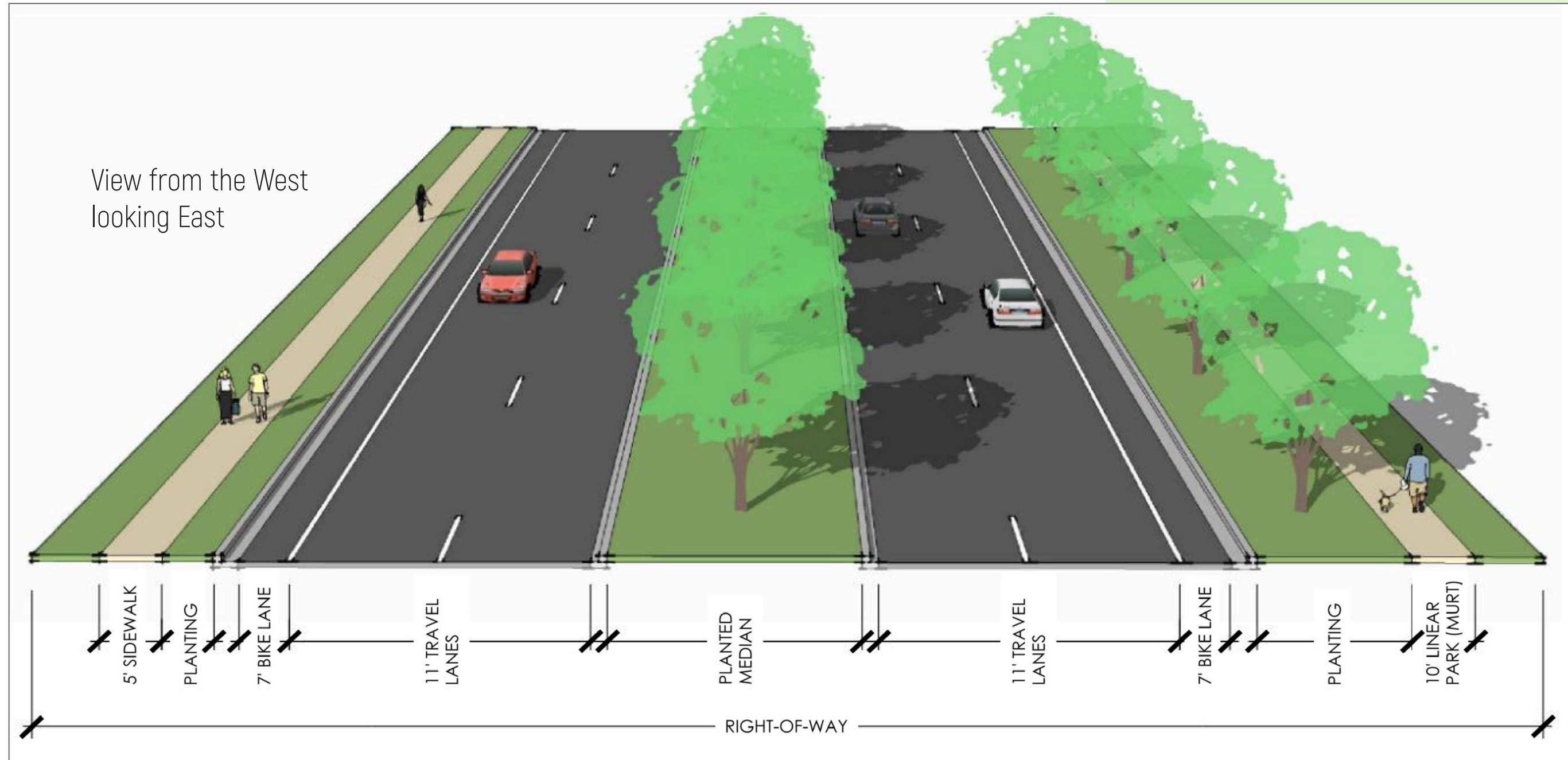


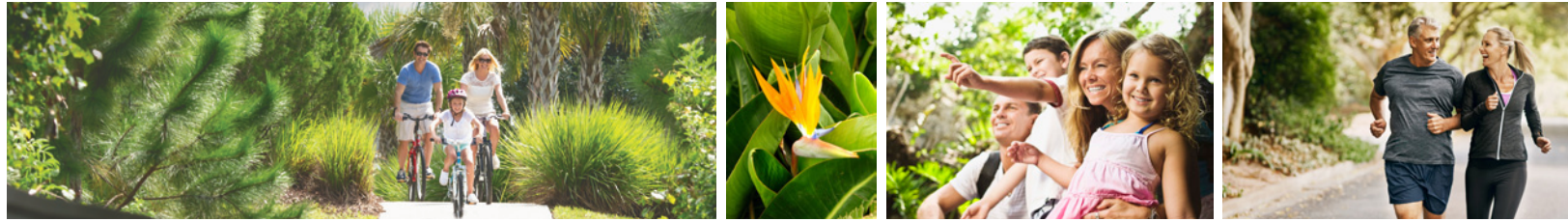


LAUREL ROAD EXPANSION

PROGRESS REPORT

LAUREL ROAD TYPICAL SECTION





LAUREL ROAD EXPANSION

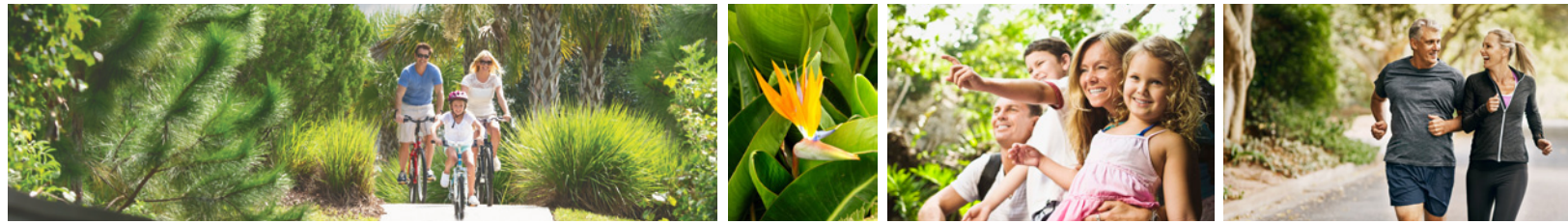
PROGRESS REPORT

INTERSECTION OF LAUREL ROAD AND JACARANDA BOULEVARD



Similar intersection layout to Laurel Rd. and Jacaranda Blvd. shown here at Deer Dr. & Lakewood Ranch Blvd.

In Coordination with City of Venice, Sarasota County and Sarasota County Fire Department

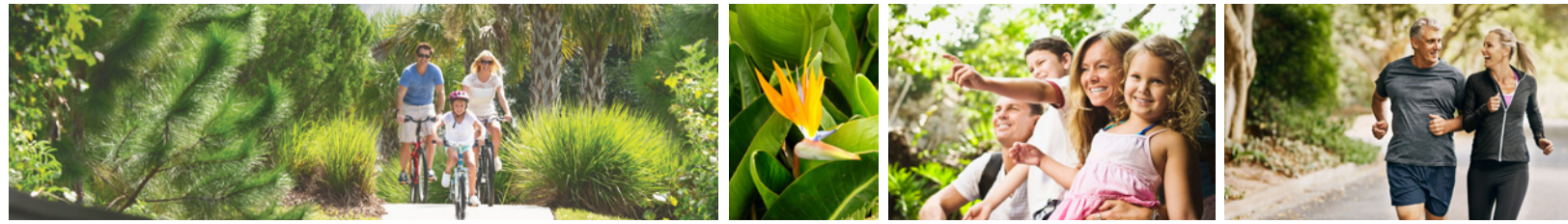


LAUREL ROAD EXPANSION

PROGRESS REPORT

EXAMPLES OF LANDSCAPE DESIGN AND LIGHTING





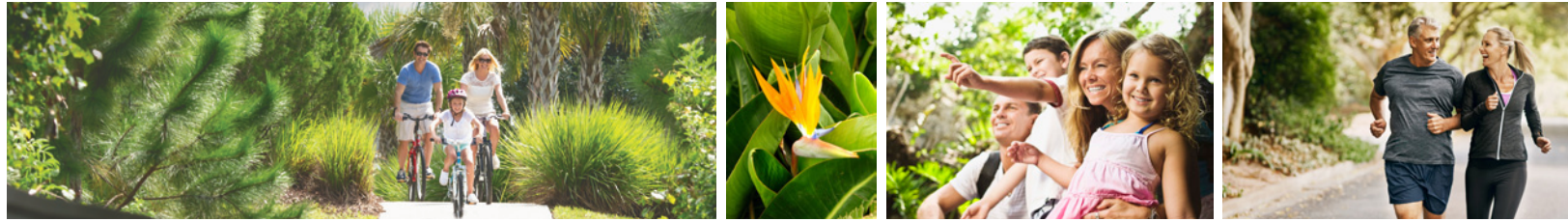
LAUREL ROAD EXPANSION

PROGRESS REPORT

SUCCESSFUL HISTORY OF PUBLIC PRIVATE PARTNERSHIPS

- **Resulted in major savings for taxpayer**
- Our previous public/private projects
 - US Highway 301 in Manatee County
 - Budgeted for \$32 MM, built for \$21 MM
 - Honore Avenue Extension (3.2 miles in Manatee County)
 - Built for \$6 MM under original estimate
 - Fort Hamer Bridge project
 - Bay Street sidewalk for Sarasota County
 - Budgeted for over \$1.294 MM, built for \$304,000 and completed just 2 months after receiving approval
 - Currently working on the Missing Link in Sarasota County
 - East of I-75 Connecting Clark Road to Knights Trail
- The County budget for Laurel Road is \$16,000,000
- **Our estimate for Laurel Road is consistent with our normal savings of 30% to 40%**





LAUREL ROAD EXPANSION

PROGRESS REPORT

AN ENGINEERING CONTRACT WITH STANTEC

- Top engineering and planning firm
- Long successful history working on public and private sector projects



Stantec

Lump sum to complete engineering design to include:

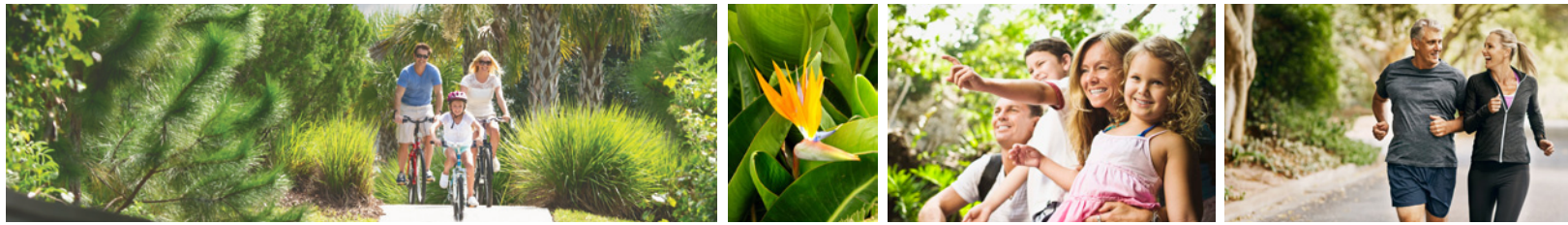
- Environmental Constraints
- Stormwater Design
- Traffic Analysis
- City and County Coordination

Providing:

- 60% Permit Design Plans
- 90% Bid Phase Design Plans
- 100% Construction Phase Design Plans

To make Laurel Road a shovel-ready construction project.





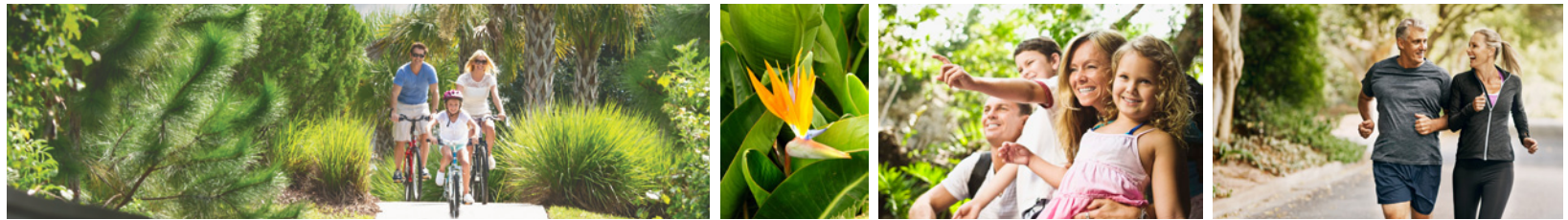
LAUREL ROAD EXPANSION

PROGRESS REPORT

THE BUDGET FOR LAUREL ROAD

Completion of engineering design (Stantec)	\$894,000
Right-of-way acquisition litigation (Bentley)	\$50,000
Construction of the road (ESWG)	\$6,000,000
Joint use ponds (other than right-of-way acquisitions) (Neal)	\$500,000
Right-of-Way	\$2,370,000
Lighting (ESWG)	\$300,000
Landscaping and irrigation (ESWG)	\$400,000
Management fees 6% (ESWG)	\$489,000
ESTIMATED TOTAL (PRIMARYLY FROM MOBILITY FEES)	\$11,003,000

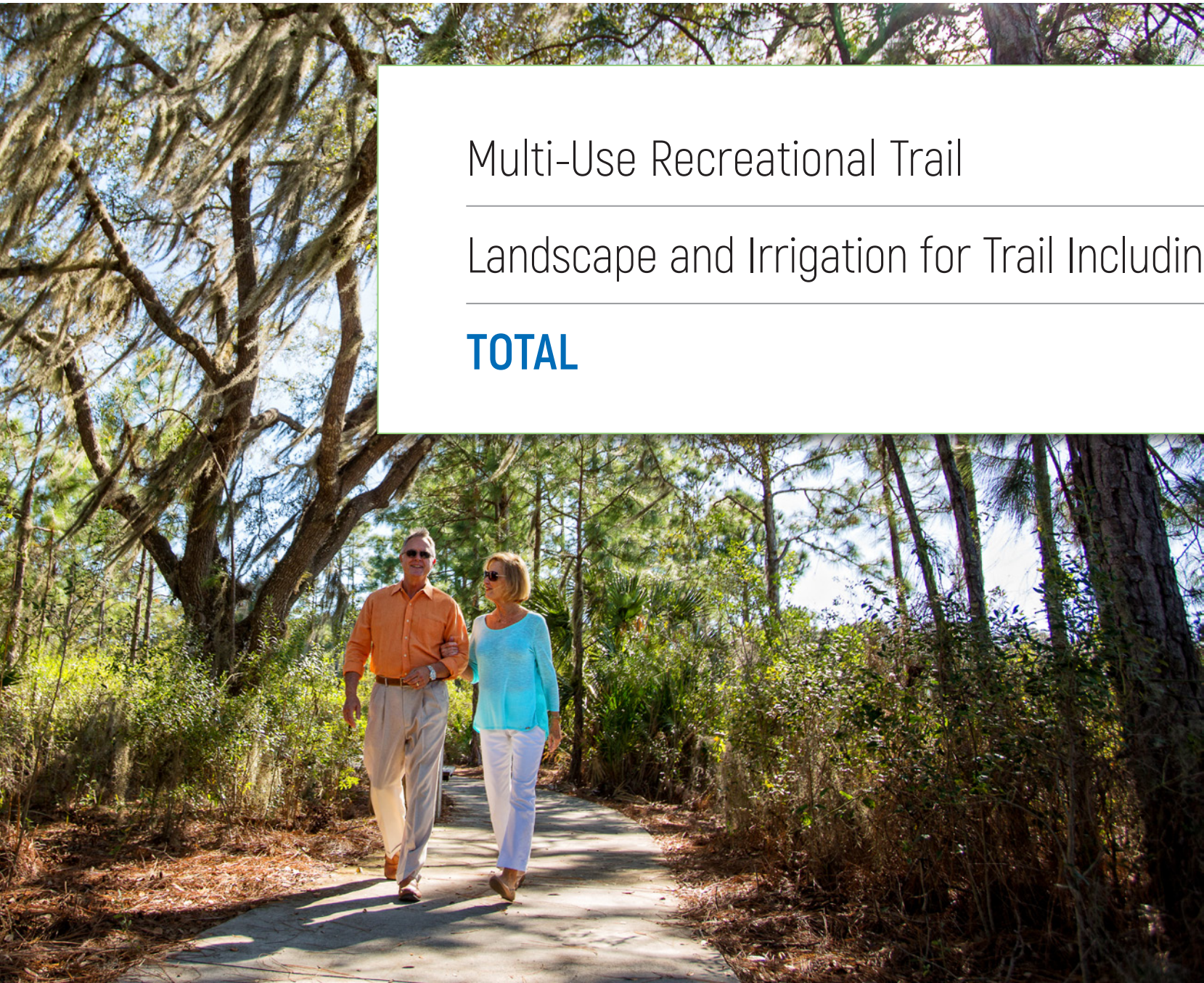




LAUREL ROAD EXPANSION

PROGRESS REPORT

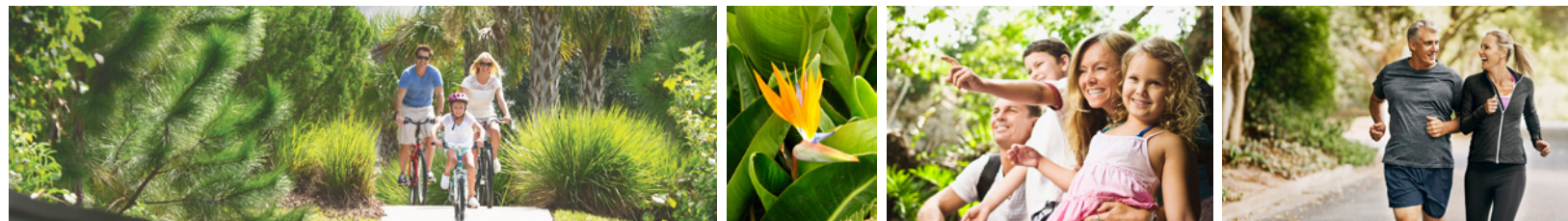
BUDGET FOR LINEAR PARK (FROM PARK IMPACT FEES)



Multi-Use Recreational Trail	\$400,000
Landscape and Irrigation for Trail Including Enhanced Trail Features	\$300,000*
TOTAL	\$700,000

*If you direct us, we can revise to implement Florida Friendly landscaping





LAUREL ROAD EXPANSION

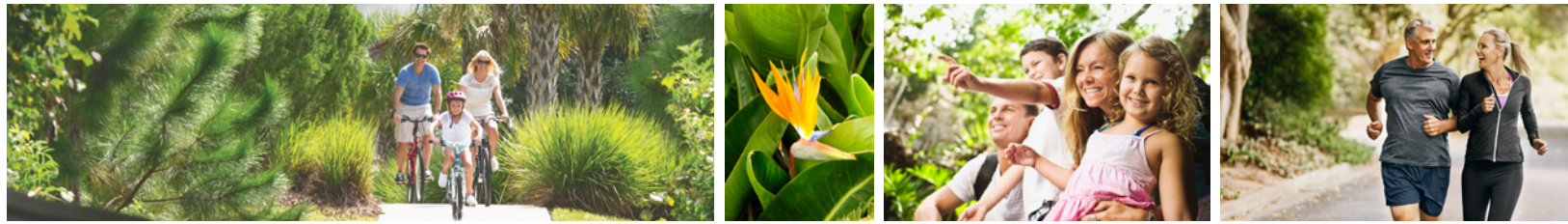
PROGRESS REPORT

LINEAR PUBLIC PARK AND MULTI-USE RECREATIONAL TRAIL



- Enhanced trail features with strong connectivity to adjacent open space, attractions and amenities
- Creating fun activities for passive and active users to experience along the trail system
- Natural play elements, functional fitness nodes, along with passive and relaxing spaces
- Avid Trails is example

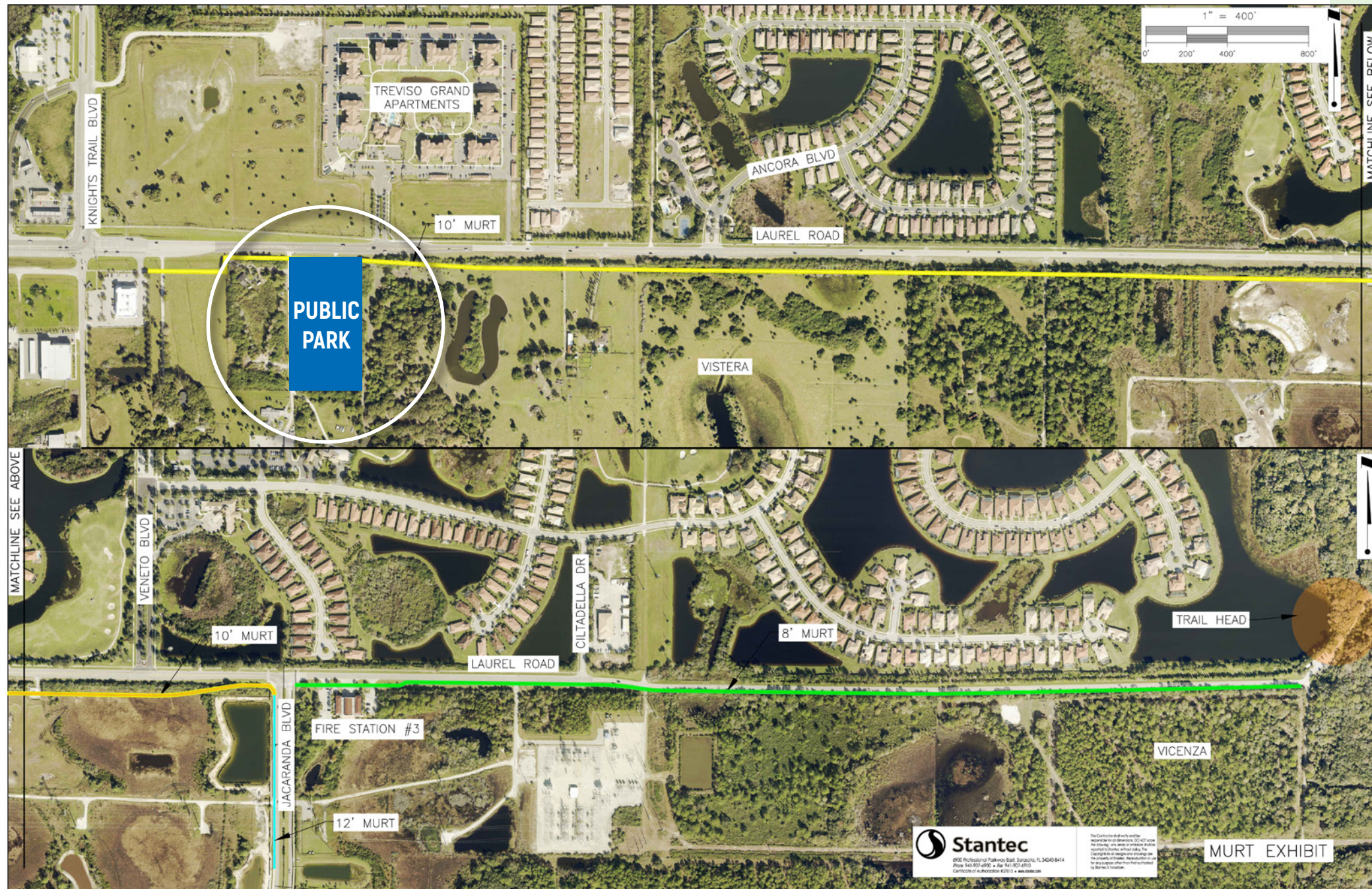


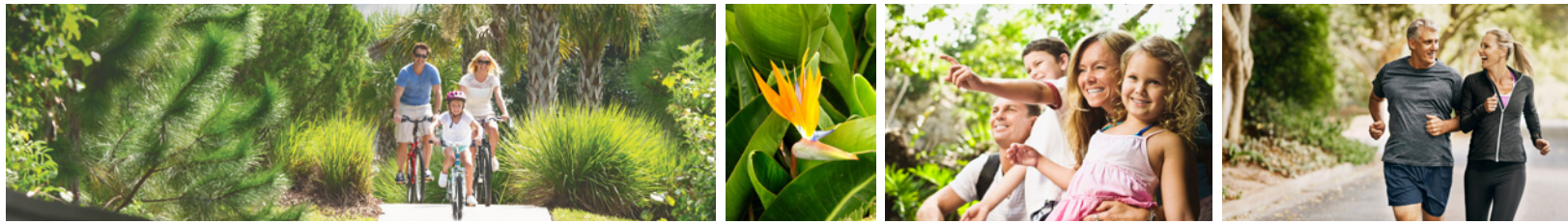


LAUREL ROAD EXPANSION

PROGRESS REPORT

LINEAR PARK ENHANCING CONNECTIVITY

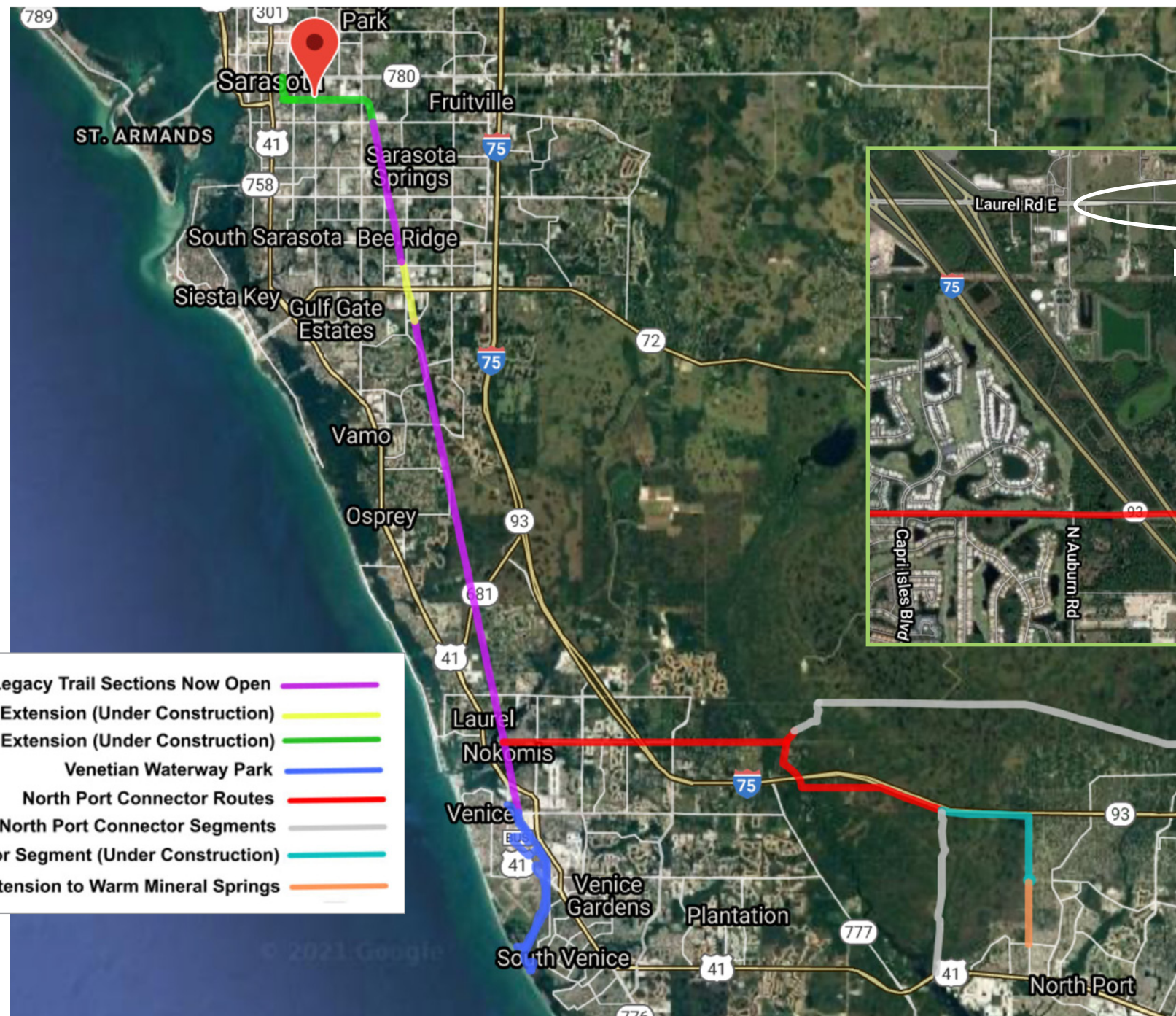


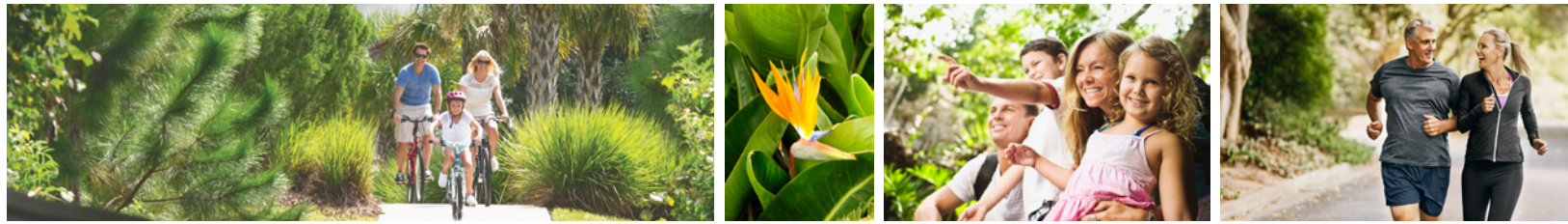


LAUREL ROAD EXPANSION

PROGRESS REPORT

MULTI-USE RECREATIONAL TRAIL CONNECTING TO THE LEGACY TRAIL

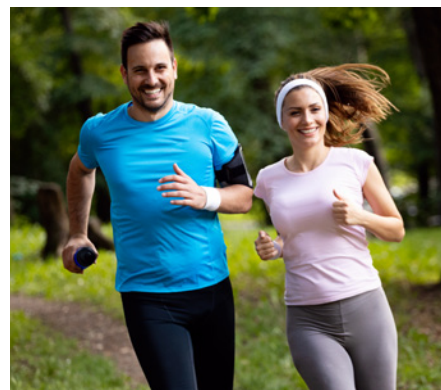


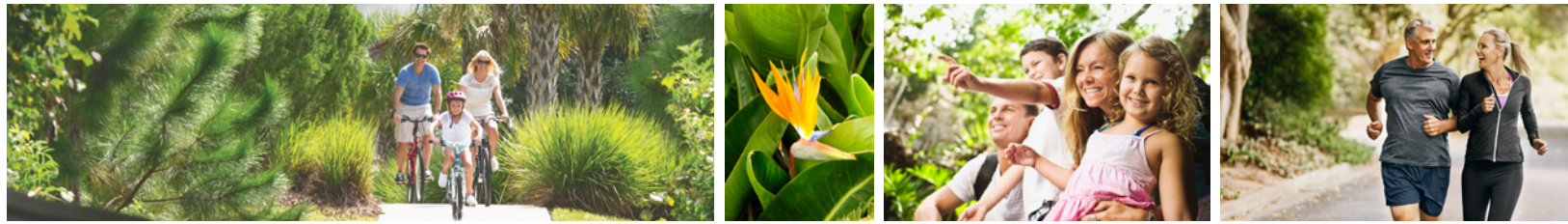


LAUREL ROAD EXPANSION

PROGRESS REPORT

A PLAN FOR THE ANCHOR PARK

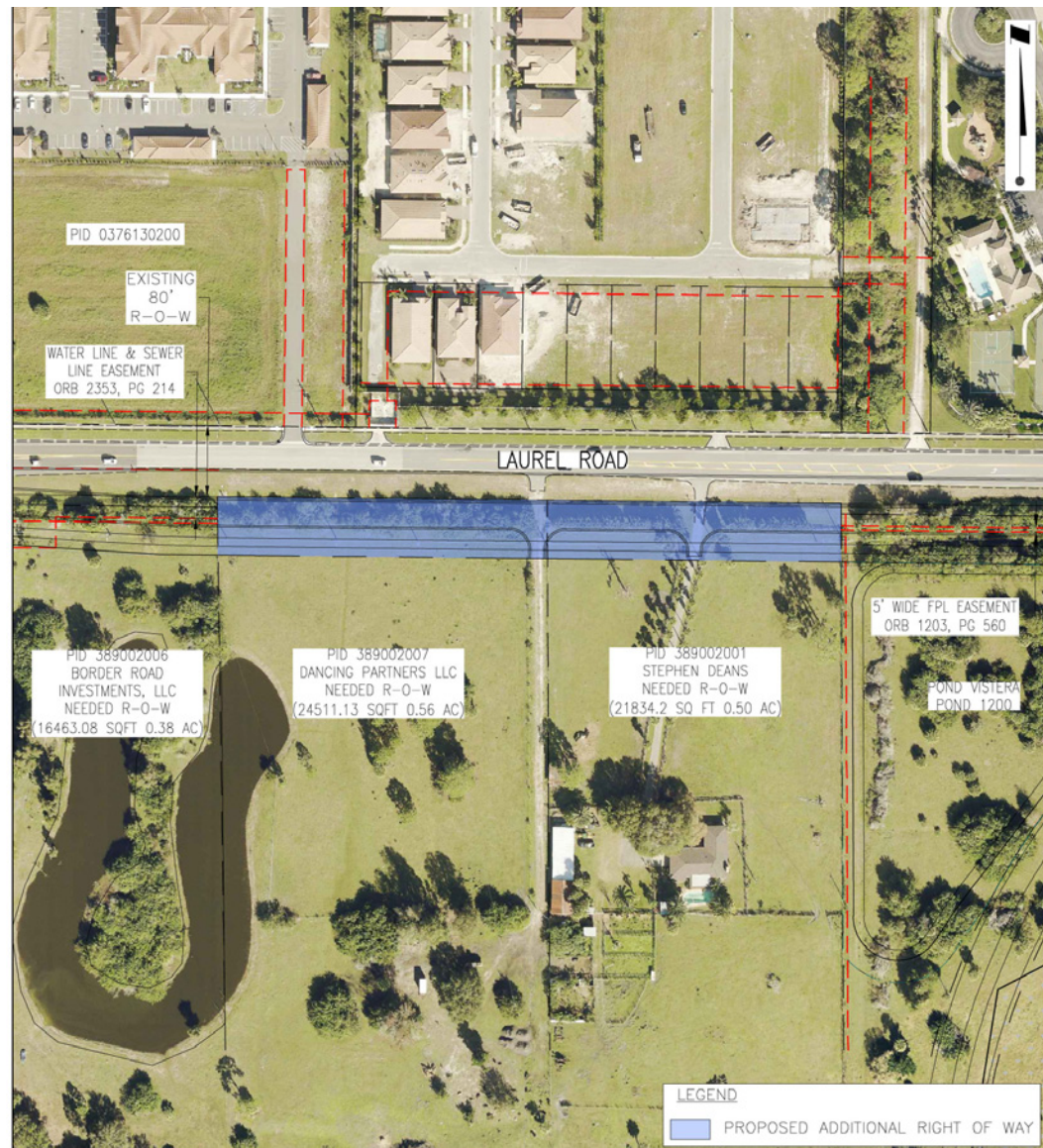


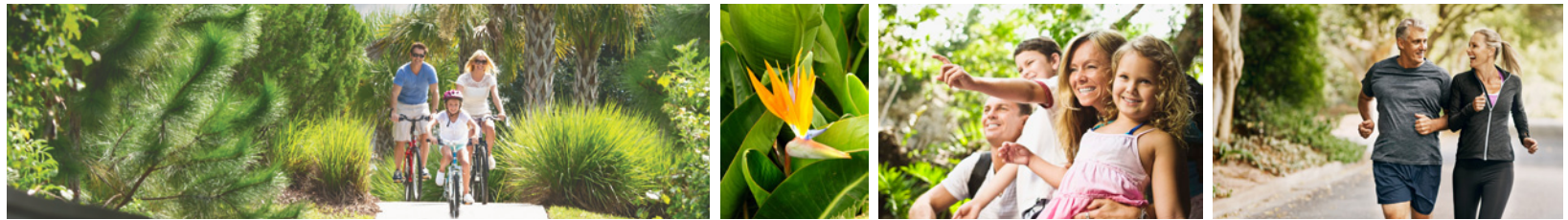


LAUREL ROAD EXPANSION

PROGRESS REPORT

INITIATING EMINENT DOMAIN





LAUREL ROAD EXPANSION

PROGRESS REPORT

HERE'S HOW WE WILL PAY FOR IT



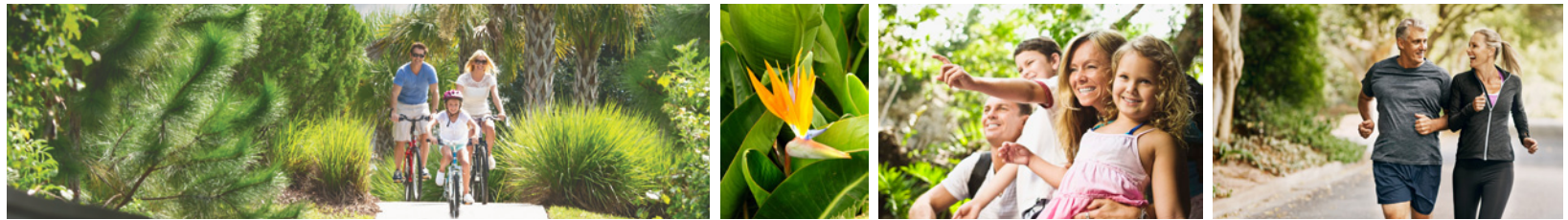
City of Venice mobility fee balance	\$7,803,244
• Additional 2022 fees	\$800,000
• Additional 2023 fees	\$800,000
• Additional 2024 fees	\$800,000
TOTAL	\$10,203,244

(You have ample sources from known or committed sources to build Laurel Road)

**ROAD AND MOBILITY
IMPACT FEES - The City
and County report the
following balances at
June 30, 2021**

	County	City
Fund 125 - Mobility Fee	\$ 5,453,896	\$ 400,000
Fund 183 - Road Impact Fee	151,271	
Fund 383 - Road Impact Fee Const	4,498,077	-
	10,103,244	400,000
Less: Commitments/Encumbrances Pinebrook/Venice/Ridgewood Intersection	(2,300,000)	
Laurel Road		(400,000)
Amount Available	\$ 7,803,244	\$ -

Subject to information confirmed from the City of Venice and Sarasota County (and decisions related to the CIGP grant)



LAUREL ROAD EXPANSION

PROGRESS REPORT

AVAILABLE FUNDS SHOULD WE HAVE A SHORTFALL

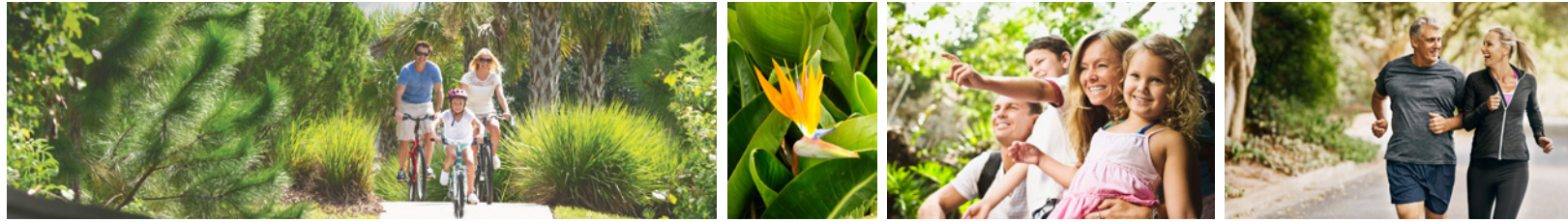
Grant from Florida Legislature	\$5,500,000
Surface Transportation Act	\$5,500,000
(These are about 1/2 of the construction cost) Our team has gotten grants in recent years of \$17,000,000, \$11,000,000 and \$3,600,000 We think this is very possible	
State Infrastructure Bank	\$2,000,000
Laurel Road CDD	\$5,000,000
Pay Neal on Terms	\$2,000,000
Request Sarasota County to reallocate resurfacing	\$1,900,000

BUILD THE ROAD

We think there are more than ample funds to build this road at this time.

We believe we need to get started to have shovel ready plans for construction.





LAUREL ROAD EXPANSION

PROGRESS REPORT

FREE MONEY FROM OTHER SOURCES



Successful history working with local governments in obtaining grants

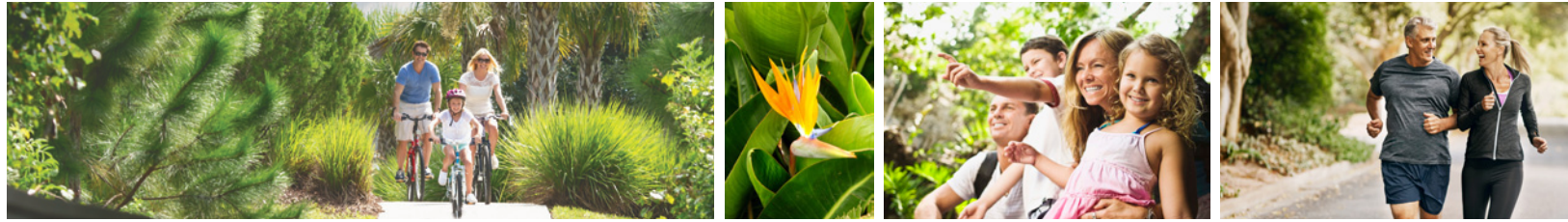
Legislative and Political Process

Magic of A-S-K

Importance of shovel-ready projects

Grants not possible unless shovel-ready (Cattlemen Road example)

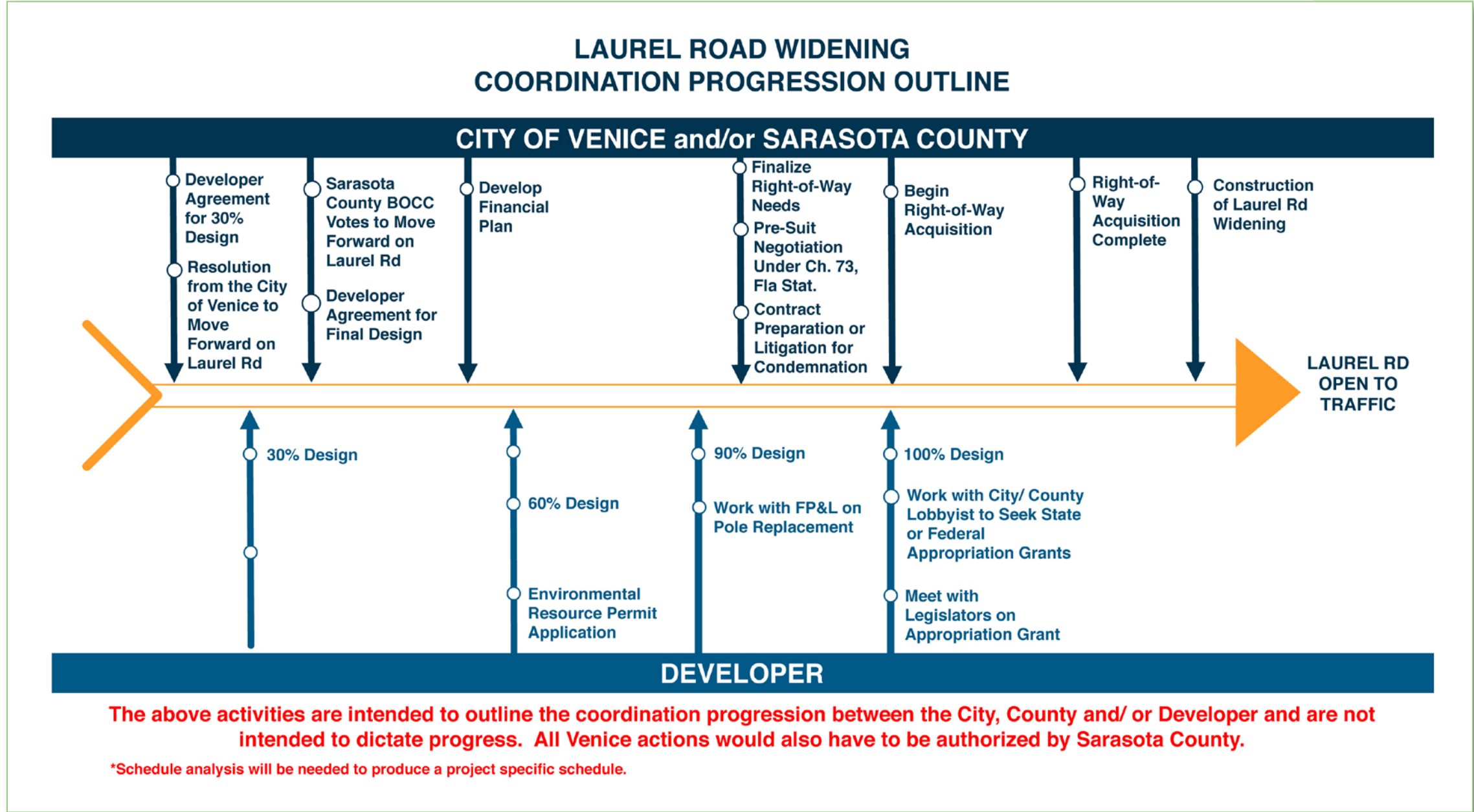


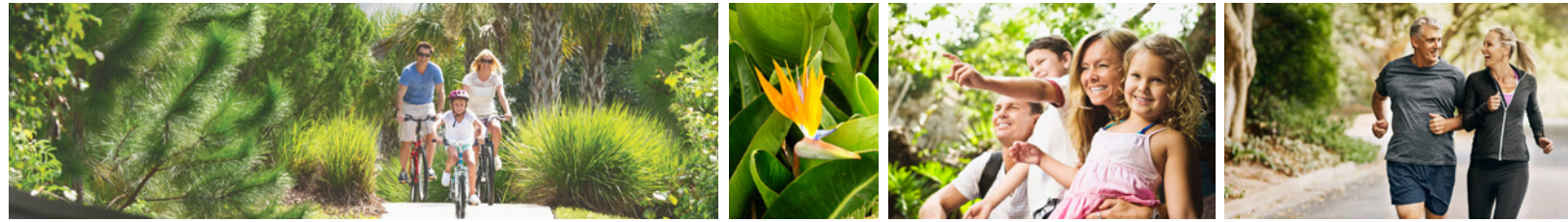


LAUREL ROAD EXPANSION

PROGRESS REPORT

CRITICAL PATH





LAUREL ROAD EXPANSION

PROGRESS REPORT

IN CONCLUSION

A DECISION IS NEEDED



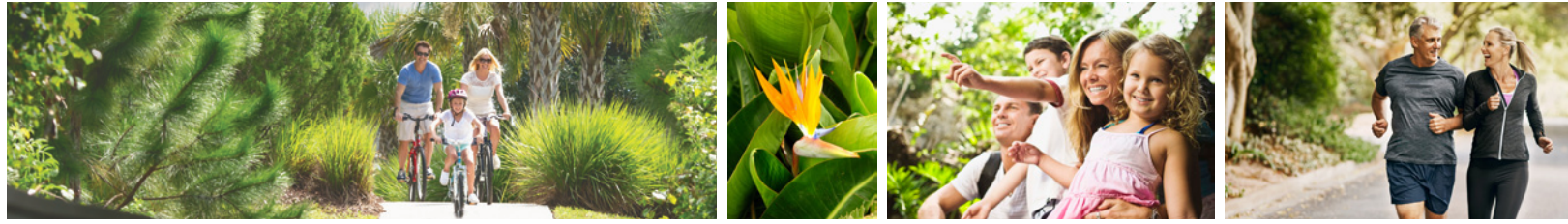
Thank you for this opportunity

In discussion since April 2016

We have a rare opportunity to build this Highway for less than the budgeted cost

Particularly with the 2 Stimulus Programs in operation

And the opportunities available for the right-of-way, **but only for a limited time**



LAUREL ROAD EXPANSION

PROGRESS REPORT

IN CONCLUSION

If the City agrees to move forward with the next steps towards the completion of the Laurel Road Project, we would recommend the following motion:

The Venice City Council authorizes Stantec Engineering, of Sarasota, Florida, to complete the required 100% plans for of the Laurel Road Project and agrees to pay Stantec an amount not to exceed \$894,000.

The Venice City Council requests the County to invoke its power of eminent domain for purposes of acquiring the right-of-way necessary for completion of the Laurel Road Project and further requests that the County retain Attorney Morgan Bentley to represent it in same, in order to expedite the eminent domain process.

The Venice City Council shall retain and authorize Capital City Consulting, Tallahassee, Florida, to obtain approval of a 50-50 grant from the Florida Legislature.

The Venice City Council hereby directs its Finance Department to work with the Economic Stimulus Working Group and Lucy Gallo of DPFG (Development, Planning & Financial Group) to develop a fiscal plan to expend approximately \$11,003,000.00 for the Laurel Road Project, and to report back to the City Council with such plan no later than December 1st, 2021.

