

PLOTTED: 6/24/2021 8:29:49 AM
 D:\10000



NORTHWEST PERSPECTIVE



SOUTHEAST PERSPECTIVE

GENERAL ARCHITECTURAL NOTES

- PERSPECTIVE VIEWS ARE FOR GENERAL REFERENCE ONLY.
- FOR ARCHITECTURAL SYMBOL LEGEND SEE PLAN DRAWING A-40-102 AND FOR ARCHITECTURAL ABBREVIATIONS SEE DRAWING A-40-501.
- SEE STRUCTURAL DRAWINGS FOR EQUIPMENT PADS AND CIVIL DRAWINGS FOR SIDEWALKS, CURBS & DRIVEWAYS.
- FOR EXTERIOR LIGHT FIXTURES SEE ELECTRICAL DRAWINGS.
- BUILDING HEIGHT HAS BEEN DETERMINED BASED ON SECTION 86-570 FROM THE LAND DEVELOPMENT CODE FROM THE CODE OF ORDINANCES FOR THE CITY OF VENICE, WHICH STATES THE FOLLOWING: "BUILDING, HEIGHT OF MEANS THE VERTICAL DISTANCE MEASURED FROM THE GREATER OF THE FOLLOWING: FEMA FIRST HABITABLE FLOOR REQUIREMENT, 18 INCHES ABOVE THE FLORIDA DEPARTMENT OF ENVIRONMENTAL PROTECTION REQUIREMENT FOR THE FIRST HABITABLE FLOOR STRUCTURAL SUPPORT, 18 INCHES ABOVE THE ELEVATION OF THE AVERAGE CROWN OF THE ADJACENT ROADS, OR THE AVERAGE NATURAL GRADE UNALTERED BY HUMAN INTERVENTION; TO THE PEAK OF THE ROOF OR THE HIGHEST POINT OF ANY NON-EXEMPT APPURTENANCE ATTACHED TO THE ROOF". THE FIRST DEFINITION COORESPONDING TO FEMA'S FIRST HABITABLE FLOOR REQUIREMENT BASED ON A CATEGORY III HURRICANE WAS THE ONE USED FOR THIS DETERMINATION.

Black & Veatch Architects, PLLC
 Florida Registered
 License Number: AA06002279
 10000
 Kansas City, Missouri

CITY OF VENICE
 NEW WATER BOOSTER PUMP STATION

BOOSTER PUMP STATION
 ARCHITECTURAL
 PERSPECTIVES

DESIGNED: PDR
 DETAILED: DAY
 CHECKED: DJT
 APPROVED:
 DATE: MAY 2021

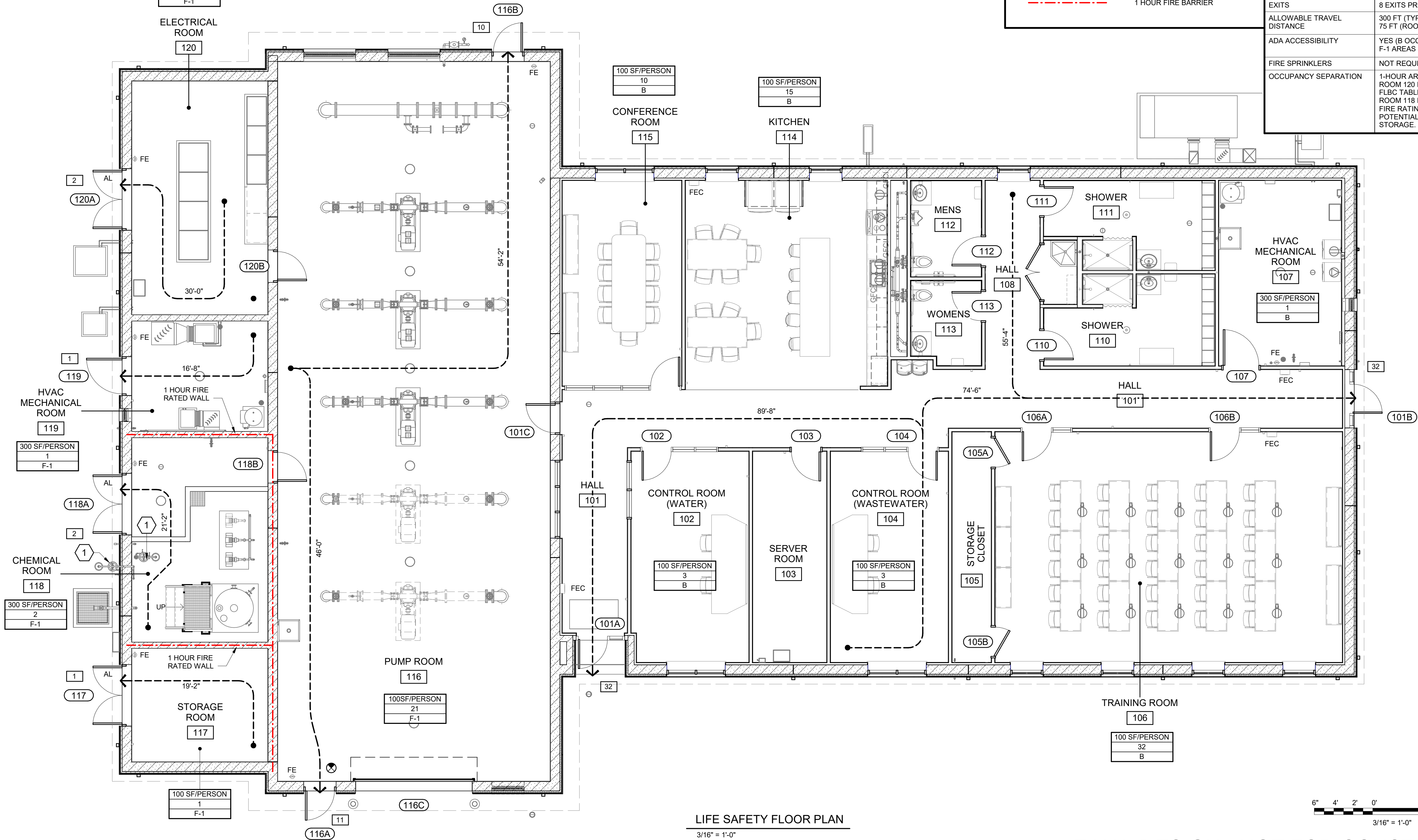
0 1/2 1
 IF THIS BAR DOES NOT
 MEASURE 1" THEN DRAWING
 IS NOT TO FULL SCALE

PROJECT NO.
 403737

A-40-001

FINAL DESIGN - NOT FOR CONSTRUCTION

PLOTTED: 6/23/2021 10:21:08 PM
 D:\0000



LIFE SAFETY FLOOR PLAN
 3/16" = 1'-0"

SHEET KEYNOTES		BUILDING ENVELOPE DESIGN REQUIREMENTS		LIFE SAFETY LEGEND		BUILDING CODE ANALYSIS	
1. EMERGENCY SHOWER & EYEWASH.		ROOF	R-25CI MINIMUM		FIRE EXTINGUISHER (FE)	APPLICABLE BUILDING CODES: 2020 FLORIDA BUILDING CODE - BUILDING 2020 FLORIDA BUILDING CODE - ACCESSIBILITY 2020 FLORIDA BUILDING CODE - ENERGY CONSERVATION 2020 FLORIDA FIRE PREVENTION CODE	
		EXTERIOR WALLS	R-5.7CI MINIMUM		WALL MOUNTED FIRE EXTINGUISHER CABINET (FEC)	BUILDING NAME	BOOSTER PUMP STATION
		SWINGING DOORS	U - 0.61		PATH OF EGRESS TRAVEL	OCCUPANCY	MIXED USE: B & F-1
		FLOOR SLAB	UNHEATED, NO INSULATION REQUIREMENT		OCCUPANTS PER SF OCCUPANT LOAD OCCUPANCY CLASSIFICATION	ACTUAL FLOOR AREA	7,607 SF TOTAL: B = 4,310 SF F-1 = 3,360 SF
					CUMULATIVE OCCUPANT LOAD AT EXIT	ACTUAL HEIGHT	1 STORY (31.00 FT)
					EXIT SYMBOL	TYPE OF CONSTRUCTION	TYPE II-B
					1 HOUR FIRE BARRIER	ALLOWABLE AREA	COMPLIES WITH FLBC 508.4.2 SUM OF RATIOS: $(4,310/23,000) + (3,360/15,000) = .42 < 1.0$
						ALLOWABLE HEIGHT	2 STORIES (55 FT)
						DESIGN OCCUPANT LOAD	89 PERSONS
						EXITS	8 EXITS PROVIDED
						ALLOWABLE TRAVEL DISTANCE	300 FT (TYPICAL) 75 FT (ROOMS WITH ONE EXIT)
						ADA ACCESSIBILITY	YES (B OCCUPANCY ONLY) F-1 AREAS EXEMPT PER FLAC 203.5
						FIRE SPRINKLERS	NOT REQUIRED
						OCCUPANCY SEPARATION	1-HOUR AROUND ROOMS 118 AND 120. ROOM 120 IS A CONTROL AREA PER FLBC TABLE 414.2.2. ROOM 118 IS GENERAL STORAGE BUT FIRE RATING WILL ACCOMMODATE POTENTIAL FOR FUTURE CHEMICAL STORAGE.

Black & Veatch Architects, PLLC
 Florida Registered
 License Number: AA0602279
 1400 W. 10th Street
 Kansas City, Missouri

CITY OF VENICE
 NEW WATER BOOSTER PUMP STATION
 BOOSTER PUMP STATION
 ARCHITECTURAL
 LIFE SAFETY PLAN AND BUILDING CODE ANALYSIS

DESIGNED: PDR
DETAILED: DAY
CHECKED: DJT
APPROVED:
DATE: MAY 2021

IF THIS BAR DOES NOT MEASURE 1" THEN DRAWING IS NOT TO FULL SCALE

PROJECT NO.
403737
A-40-101

FINAL DESIGN - NOT FOR CONSTRUCTION