

PROPOSED PLANTING LIST				
KEY	BOTANICAL NAME	COMMON NAME	SPECIFICATION	QTY.
LARGE TREES				
QV	QUERCUS VIRGINIANA	LIVE OAK	3" CAL., 10' HT. X 4' SPR.	7
SMALL/MEDIUM SHRUBS				
FM	FICUS MICROCARPA 'GREEN ISLAND'	'GREEN ISLAND' FICUS	3 GAL., 20" HT. x 18" SPR., 36" O.C., FULL	12
LARGE SHRUBS				
CI	CHRYSOBALANUS ICACO 'RED TIP'	'RED TIP' COCOPLUM	3 GAL., 24" HT. x 18" SPR., 36" O.C., FULL	101
MEDIAN LANDSCAPE				
CA	CRINUM ASIATICUM	CRINUM LILY	3 GAL., 20" HT. x 18" SPR., 36" O.C., FULL	2
CV	CODIAEUM VARIEGATUM	CROTON 'MAMMY'	3 GAL., 20" HT. x 18" SPR., 36" O.C., FULL	3
FM	FICUS MICROCARPA 'GREEN ISLAND'	'GREEN ISLAND' FICUS	3 GAL., 20" HT. x 18" SPR., 36" O.C., FULL	31
LM	LIRIOPE MUSCARI 'BIG BLUE'	'BIG BLUE' LIRIOPE	1 GAL.	67
SA	SEASONAL ANNUALS	SEASONAL ANNUALS	(TBD) SQUARE FEET	243

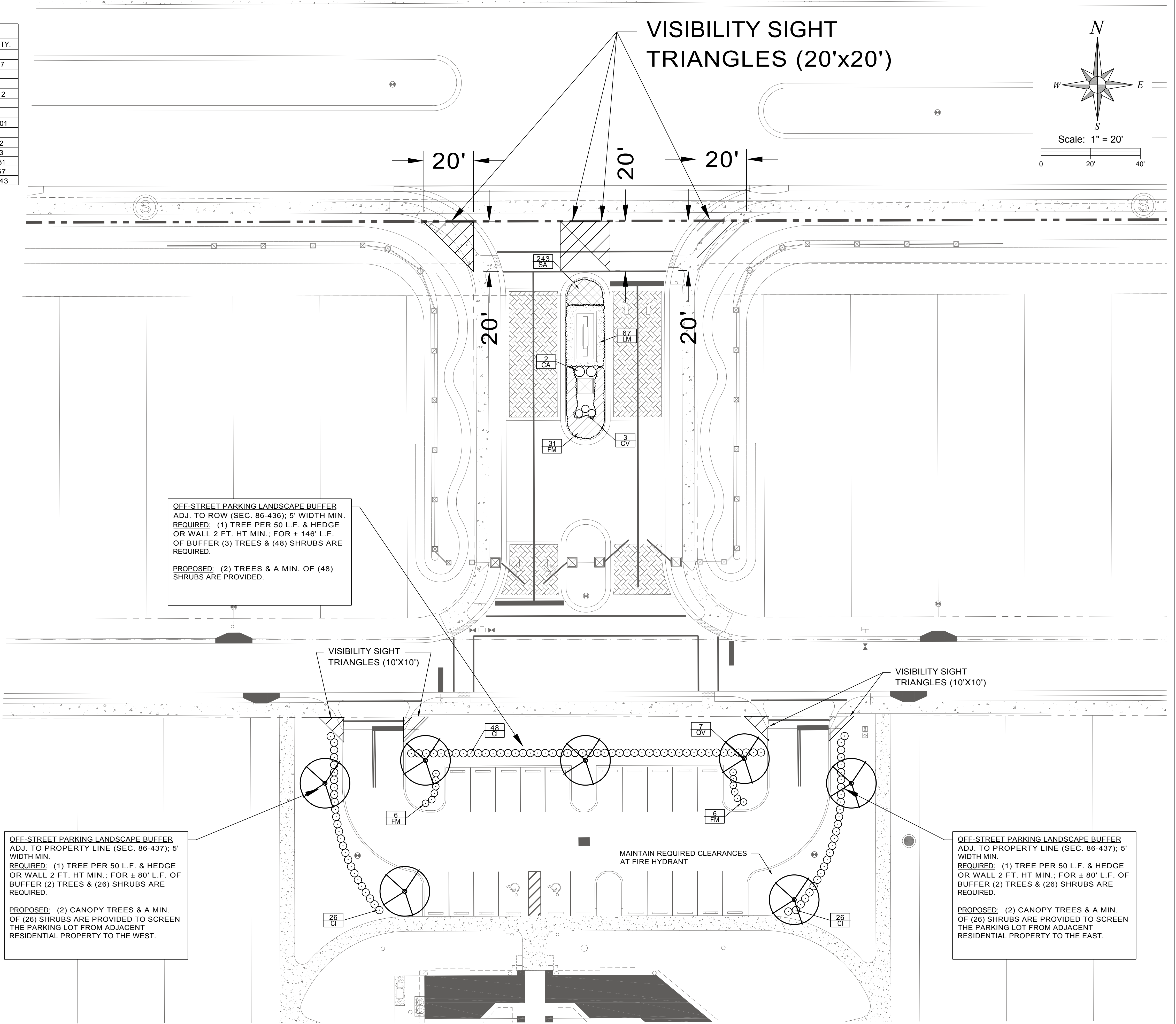
PLANTING AREA FOR TREES SHALL BE 5'x 5' MIN.

LANDSCAPE NOTES:

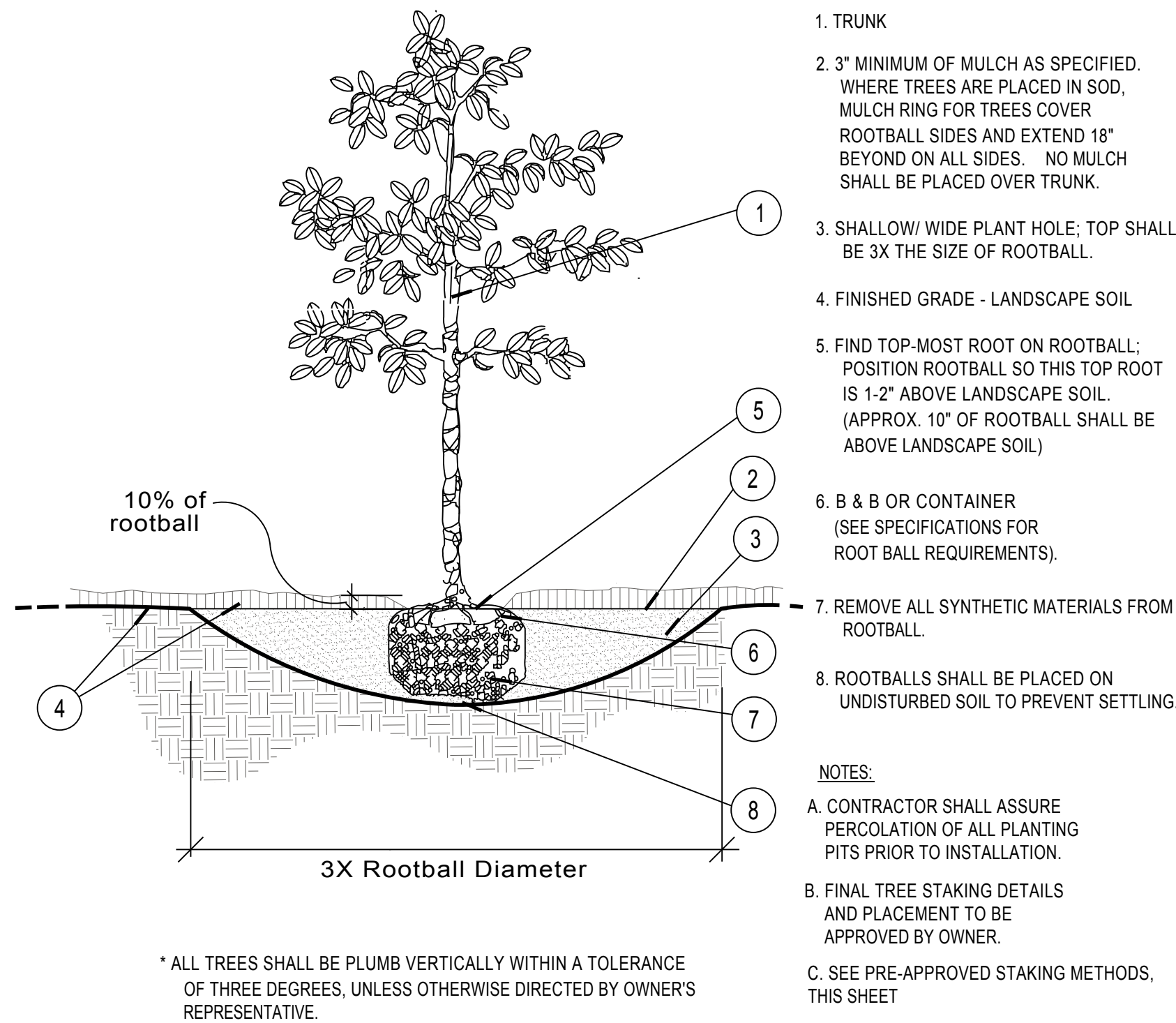
- ALL PROPOSED PLANT MATERIAL SHALL BE FLORIDA #1 OR BETTER, AS DEFINED IN GRADES AND STANDARDS FOR NURSERY PLANTS, STATE PLANT BOARD OF FLORIDA, LATEST EDITION.
- SIZES SHOWN FOR PLANT MATERIAL ON THE PLAN ARE CONSIDERED MINIMUM. PLANT MATERIAL SHALL MEET OR EXCEED THESE MINIMUM REQUIREMENTS FOR BOTH HEIGHT AND SPREAD. ANY OTHER REQUIREMENTS FOR SPECIFIC SHAPE OR EFFECT AS NOTED ON THE PLAN SHALL ALSO BE REQUIRED FOR ACCEPTANCE.
- ALL PLANT BEDS SHALL BE MULCHED WITH 3" DEPTH OF 'FLORIMULCH' OR APPROVED EQUAL.
- TOP 12" OF SOIL WITHIN PLANT BEDS SHALL BE 'FIRST CUT' AND BE SUITABLE FOR PROPOSED PLANT MATERIAL WITH REGARDS TO PH, SOIL TEXTURE, SOIL STRUCTURE, AND SEASONAL HIGH WATER TABLE.
- ALL DELETERIOUS MATERIALS SHALL BE REMOVED FROM LANDSCAPE AREAS AND THEN BACKFILLED WITH SUITABLE SOILS.
- ALL OPEN DISTURBED LANDSCAPE AREAS SHALL BE SODDED.
- MAINTAIN REQUIRED CLEARANCES AT ALL REQUIRED VISIBILITY TRIANGLES, HYDRANTS, UTILITIES, TRANSFORMERS, ETC.
- NO TREES SHALL BE PLANTED IN WET RETENTION PONDS OR DRAINAGE MAINTENANCE EASEMENTS, TREES AND SHRUBS SHALL BE INSTALLED AT LEAST FIVE FEET AWAY FROM THE FLOW LINE OF A SWALE. A MINIMUM BUFFER WIDTH OF FIVE FEET, OR AT LEAST HALF THE MINIMUM REQUIRED BUFFER WIDTH, SHALL BE PROVIDED OUTSIDE OF ANY REQUIRED EASEMENTS.
- EXISTING PLANT MATERIAL TO REMAIN WHERE POSSIBLE AND SHALL COUNT TOWARDS THE LANDSCAPE REQUIREMENTS IF COMPLIANT. ALL EXISTING TREES SHOWN ON LANDSCAPE PLAN ARE TO REMAIN AND BE BARRICADED DURING CONSTRUCTION PER DETAIL ON SHT L-2.
- NO PROTECTED TREES SHALL BE REMOVED OR PRUNED WITHIN THE PROJECT AREA. TREES PREVIOUSLY INSTALLED OR PRESERVED AS A PART OF THE OVERALL VENETIAN PUD PERMIT SHALL SATISFY REQUIREMENTS FOR PROJECT AREA AC. TREE CALCULATIONS.

IRRIGATION NOTES:

1. ALL PROPOSED TREES AND SHRUBS SHALL BE IRRIGATED BY A 100% AUTOMATIC SYSTEM.
 2. IRRIGATION SYSTEM SHALL BE CAPABLE OF SUPPLYING AN AVERAGE OF 1" OF WATER PER WEEK WITHIN WATERING RESTRICTIONS AS APPLICABLE.
 3. IRRIGATION SYSTEM SHALL NOT BE INSTALLED THROUGH EXISTING PLANT COMMUNITIES.
 4. IRRIGATION SPRINKLER ZONES SHALL BE SEPARATED FOR HIGH AND LOW WATER REQUIREMENTS AND OPERATING ON DIFFERENT WATERING CYCLES.
 5. IRRIGATION OVERTHROW TO IMPERVIOUS AND NATURAL AREAS TO BE MINIMIZED.
 6. A RAIN SENSOR SHALL BE INSTALLED WITH THE IRRIGATION CONTROL SYSTEM.
 7. IRRIGATION PIPING INSTALLED UNDER ROADS AND SIDEWALKS SHALL BE IN SCHEDULE 40 PVC SLEEVING AT 2X THE PIPE SIZE.
 8. LANDSCAPE BEDS SHALL BE FULLY IRRIGATED WITH DRIP TUBE TO PROVIDE 100% COVERAGE.
- ALL PROPOSED TREES AND PALMS SHALL BE IRRIGATED WITH TREE BUBBLERS.



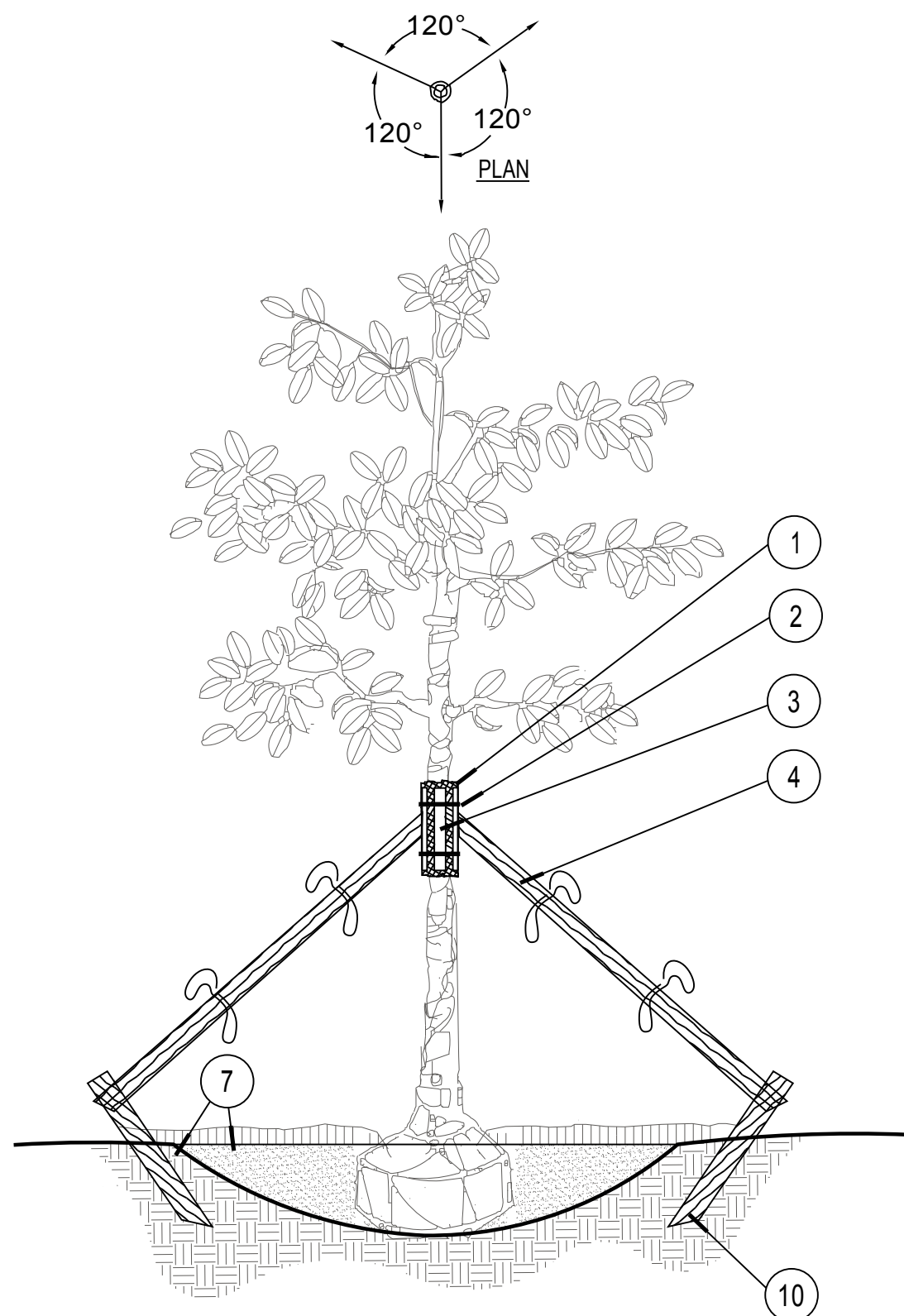
REVISIONS		PREPARED FOR:	PREPARED BY:	Date	LANDSCAPE PLAN	Sheet
DATE	DESCRIPTION					
03.30.2021 04.14.2021	REVISED PER CITY REVIEW COMMENTS REVISED VISIBILITY TRIANGLES					
		D.R. HORTON	Peter F. Keenan RLA, LLC Landscape Architect Certified Arborist LEED AP 12260 Longview Lake Cir, Bradenton, Florida 34211 Ph: (941) 356-2746 Email: keenanp33@yahoo.com	09.02.2020 Peter F. Keenan, R.L.A. FL Registration No. LA0001755	Palencia Amenity Center CITY OF VENICE, FLORIDA	L-1



Tree Planting

SECTION

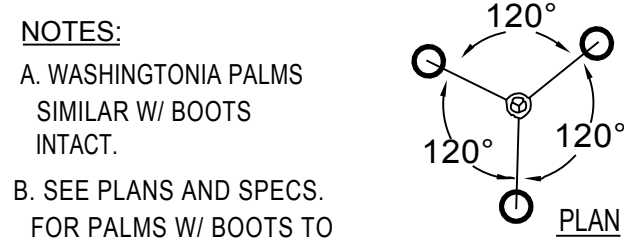
NTS



Tree Staking

SECTION

NTS



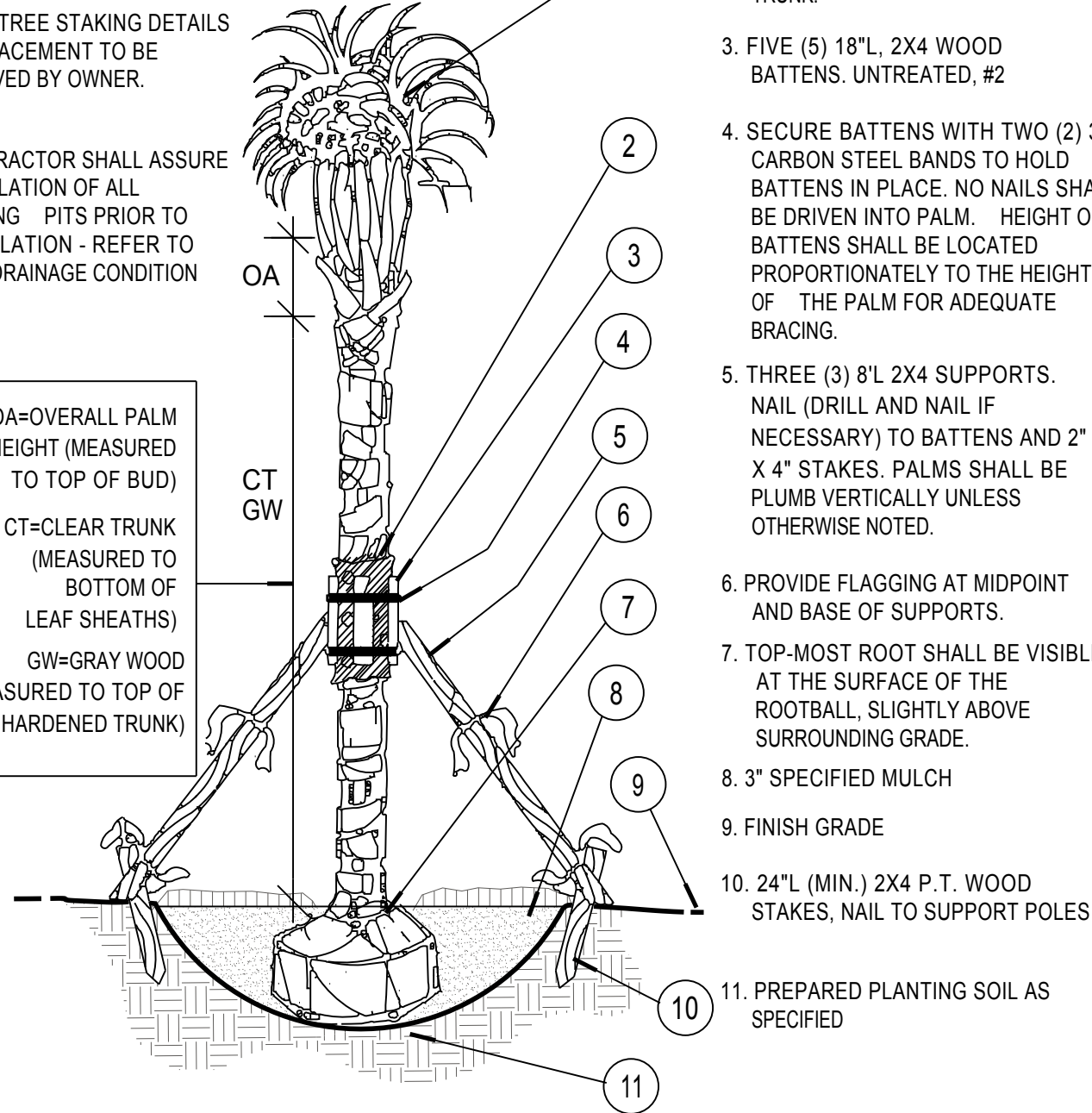
NOTES:

A. WASHINGTONIA PALMS SIMILAR W/ BOOTS INTACT.

B. SEE PLANS AND SPECS. FOR PALMS W/ BOOTS TO REMAIN ON TRUNK.

C. FINAL TREE STAKING DETAILS AND PLACEMENT TO BE APPROVED BY OWNER.

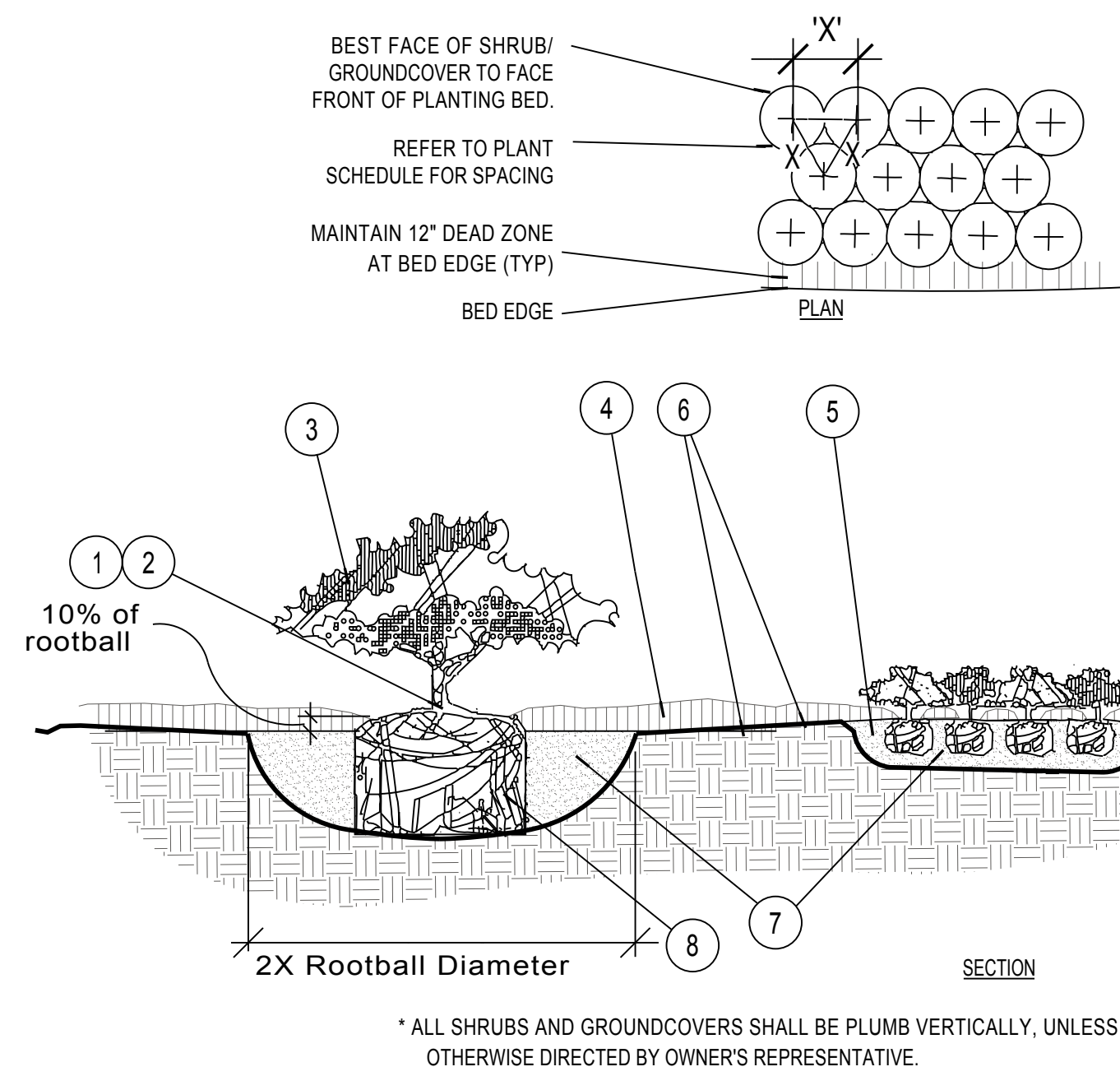
D. CONTRACTOR SHALL ASSURE PERCOLATION OF ALL PLANTING PITS PRIOR TO INSTALLATION - REFER TO POOR DRAINAGE CONDITION DETAIL.



Palm Planting and Staking

SECTION

NTS



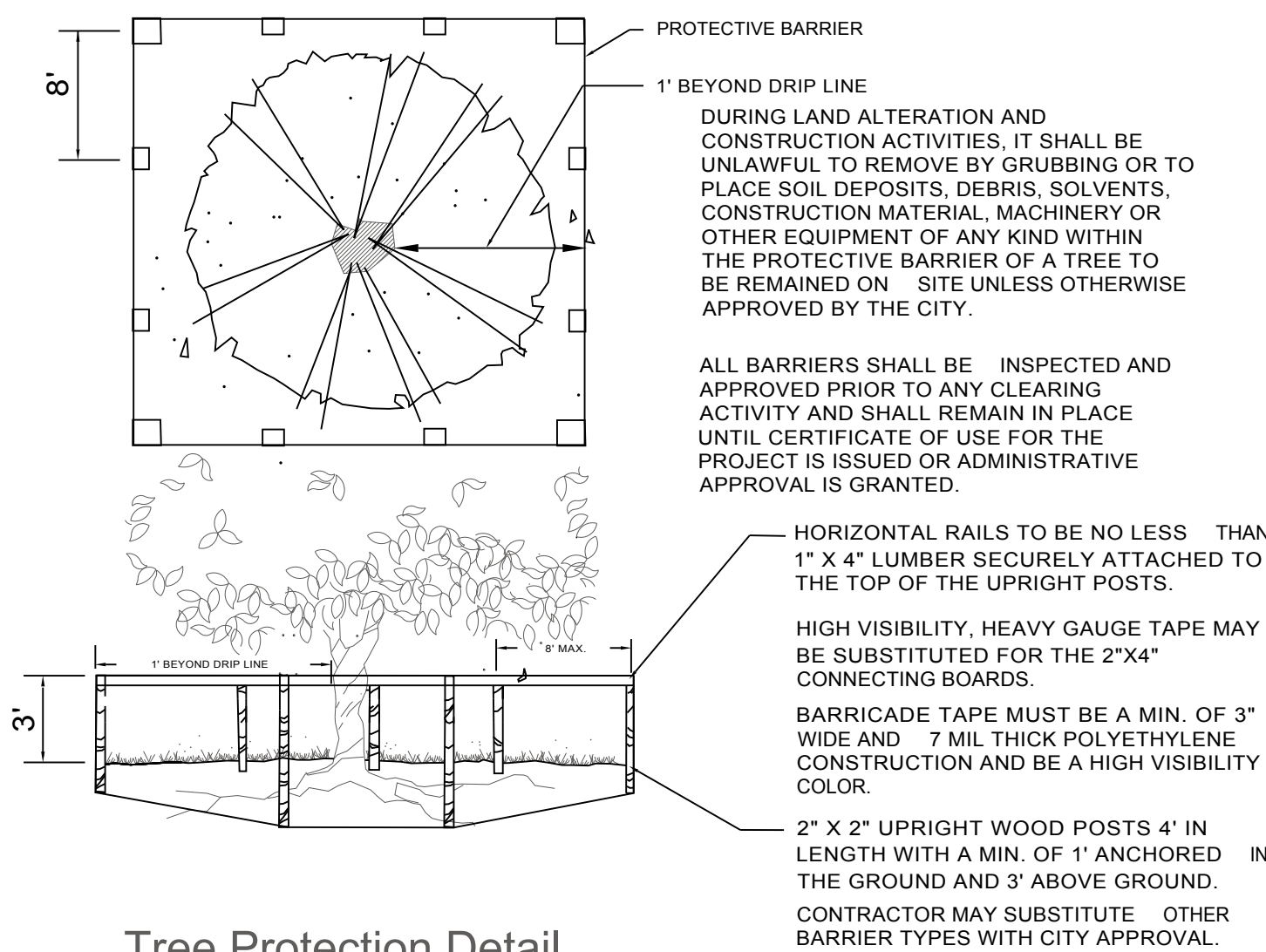
Shrub / Groundcover Planting

PLAN/SECTION

NTS

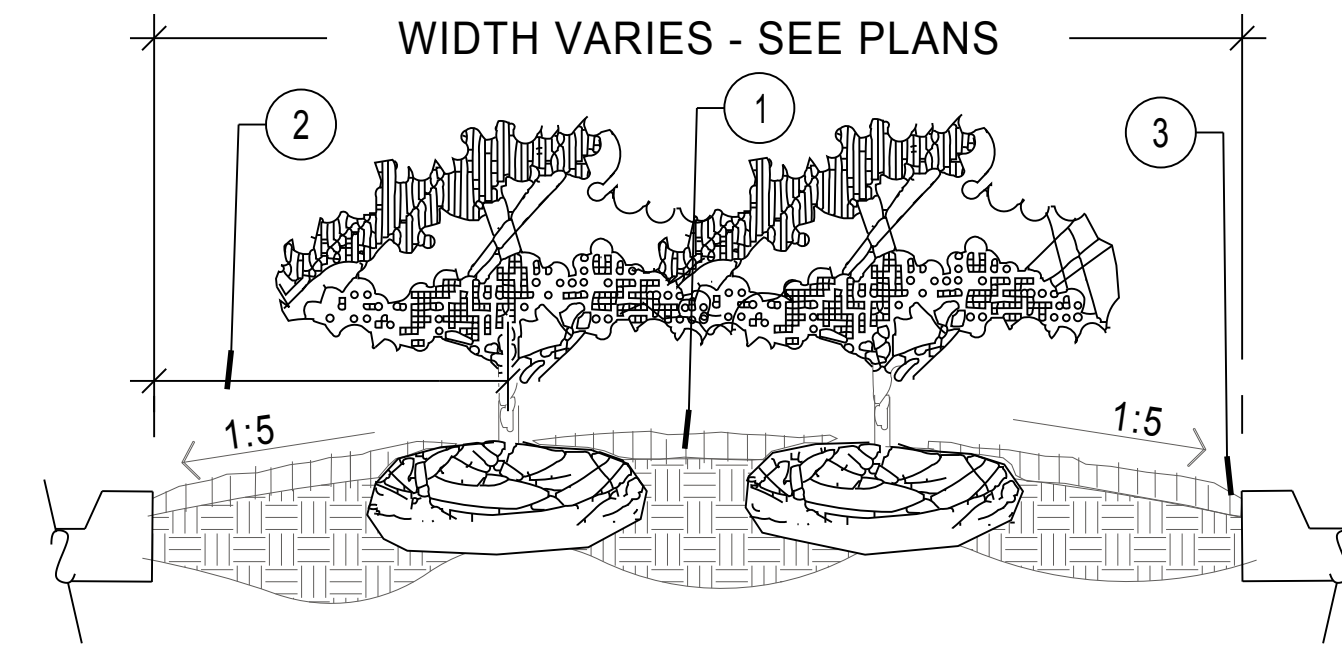
NOTES:

- FIND POINT WHERE TOPMOST ROOT EMERGES FROM TRUNK WITHIN 2" OF SURFACE. CLEAR EXCESS SOIL IF NECESSARY.
- TOP 10% OF SHRUB AND GROUNDCOVER ROOTBALLS TO BE PLANTED ABOVE THE LANDSCAPE GRADE. DO NOT COVER EXPOSED 10% ON SIDES WITH SOIL.
- PRUNE ALL LIKE SHRUBS WITHIN A PLANTED MASS TO ACHIEVE A UNIFORM MASS/HEIGHT.
- 3" MINIMUM MULCH AS SPECIFIED - DO NOT COVER ENTIRE SHRUB ROOTBALL OR CREATE "WATER RINGS" ONLY COVER SIDES OF ROOTBALL WITH MULCH
- EXCAVATE ENTIRE BED SPECIFIED FOR GROUNDCOVER BED.
- FINISHED GRADE (SEE GRADING PLAN).
- PREPARED PLANTING SOIL AS SPECIFIED. NOTE: WHEN GROUND- COVERS AND SHRUBS USED IN MASSES, ENTIRE BED TO BE AMENDED WITH PLANTING SOIL MIX AS SPECIFIED.
- SCARIFY ROOTBALL SIDES AND BOTTOM.



Tree Protection Detail

NTS



PLANTER ISLAND NOTES

- CROWN ISLANDS @ 5:1 SLOPES (OR AS SPECIFIED ON THE LANDSCAPE PLANS).
 - CLEAR ZONE: 36" MIN. FROM BACK OF CURB TO CENTER OF NEAREST SHRUB. CLEAR ZONE SHALL CONTAIN 3" CONTINUOUS MULCH OR TURF, SEE PLANS.
 - 1" MIN VERTICAL CLEARANCE, TOP OF CURB TO TOP OF MULCH.
- EXCAVATE CONTINUOUS 36" DEEP (FROM TOP OF CURB) FOR ENTIRE LENGTH AND WIDTH OF ISLAND & BACKFILL WITH APPROVED PLANTING MIX.
 - PROTECT AND RETAIN ALL CURBS AND BASE. COMPACTED SUBGRADE TO REMAIN FOR STRUCTURAL SUPPORT OF CURB SYSTEM (TYP).
 - ALL ISLANDS SHALL UTILIZE POOR DRAINAGE DETAIL WHEN PERCOLATION RATES ARE 2" PER HOUR OR LESS.

Planted Parking Lot Islands / Medians

SECTION

NTS

REVISIONS		PREPARED FOR:	PREPARED BY:	Date	LANDSCAPE DETAILS	Sheet
DATE	DESCRIPTION					
03.30.2021 04.14.2021	REVISED PER CITY REVIEW COMMENTS REVISED VISIBILITY TRIANGLES					
		D.R. HORTON	Peter F. Keenan RLA, LLC Landscape Architect Certified Arborist LEED AP 12260 Longview Lake Cir, Bradenton, Florida 34211 Ph: (941) 356-2746 Email: keenanp33@yahoo.com	Peter F. Keenan, R.L.A. FL Registration No. LA0001755	Palencia Amenity Center CITY OF VENICE, FLORIDA	L-2