



TAYLOR ENGINEERING, INC.

# Venice Resilience Plan

Jenna Phillips, M.S.

Angela Schedel, Ph.D., P.E.

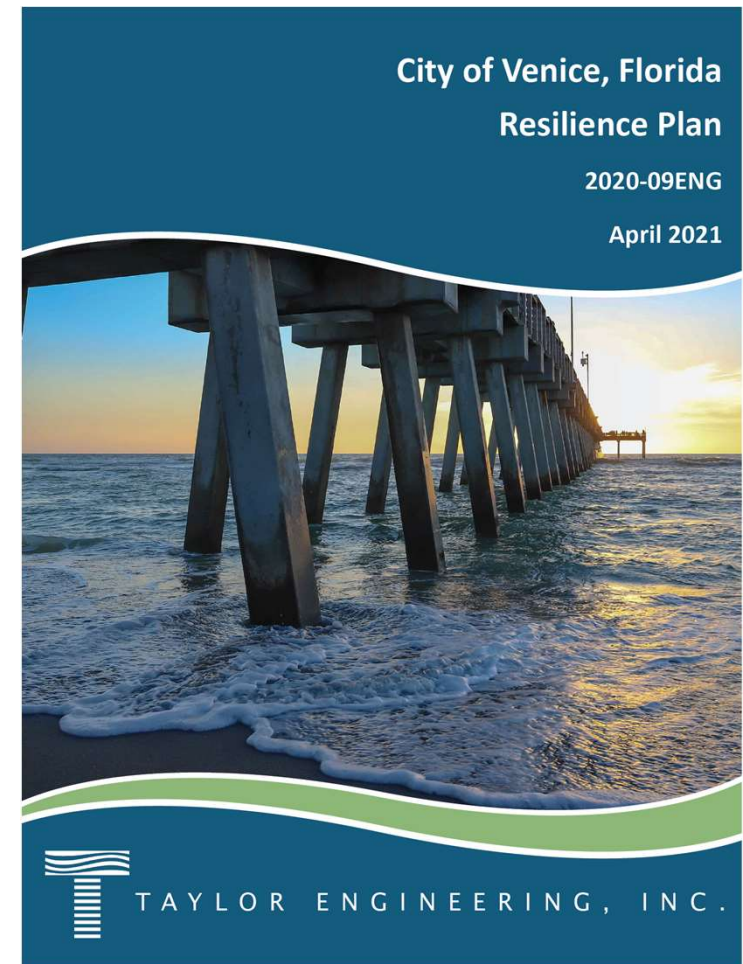
June 8, 2021



# Overview

---

- Project Background
- Context
- Vulnerability Assessment
- Adaptation Strategies
- Implementing Solutions
- Public Outreach
- Next Steps
- Discussion/Questions



## Project Background

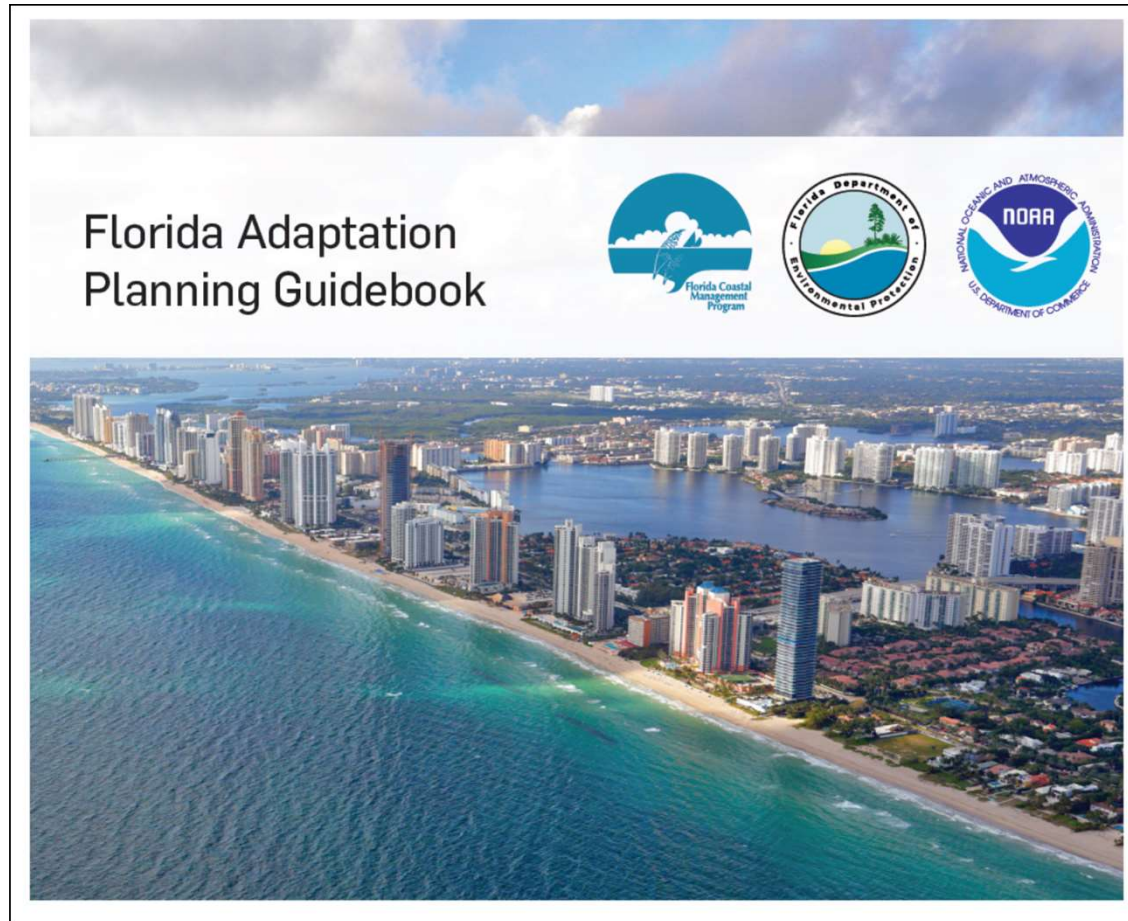
---

- Study funded by FL Resilient Coastlines Program (FRCP) Grant
  - Grant for Resilience Planning
  - FRCP is within FL Dept of Environmental Protection
- Work accomplished:
  - Background Review & Data Identification
  - Vulnerability Assessment for City Infrastructure
  - Adaptation and Resilience Strategies
  - Community Outreach and Stakeholder Engagement
  - Final Resilience Plan Report



*Source: [floridadep.gov/ResilientCoastlines](http://floridadep.gov/ResilientCoastlines)*

# FRCP Planning Guidance



*Source: [floridadep.gov/rcp/florida-resilient-coastlines-program](http://floridadep.gov/rcp/florida-resilient-coastlines-program)*



# Adaptation Planning Process



*Source: Florida Adaptation Planning Guidebook*

## Review of Past Studies

CONTEXT

VULNERABILITY  
ASSESSMENT

ADAPTATION  
STRATEGIES

IMPLEMENTATION  
STRATEGIES

- Tampa Bay Regional Planning Council's Climate Science Advisory Panel (2019)
- Tampa Bay Transportation Pilot - US DOT Federal Highway Administration (2020)
- St. Pete Beach Adaptation Plan for Don Cesar Neighborhood (2020)
- City of Sarasota Climate Adaptation Plan (2017)
- Sarasota County Draft Vulnerability Assessment (2021)
- Punta Gorda Adaptation Plan Update (2019)
- Cape Coral Climate Change Resiliency Strategy - SW FL Regional Planning Council (2017)
- Southeast Florida Unified Sea Level Projections – SE FL Regional Climate Compact (2019)
- NOAA Global and Regional Sea Level Rise Scenarios for the U.S. (2017)
- Intergovernmental Panel on Climate Change AR5 Report (2013)

# Assessing Vulnerabilities



Three components of a vulnerability assessment:

<b>Exposure</b>	<ul style="list-style-type: none"><li>- How much of the asset is in contact with the stressor</li><li>- How long is it in contact with the stressor</li></ul>
-----------------	---

<b>Sensitivity</b>	<ul style="list-style-type: none"><li>- Degree of impact if in contact with stressor</li><li>- Level of existing stress or pressure</li></ul>
--------------------	---

<b>Adaptive Capacity</b>	<ul style="list-style-type: none"><li>- Ability of the asset to adjust, repair, or respond to stressor</li></ul>
--------------------------	--



# Sea Level Trend

CONTEXT

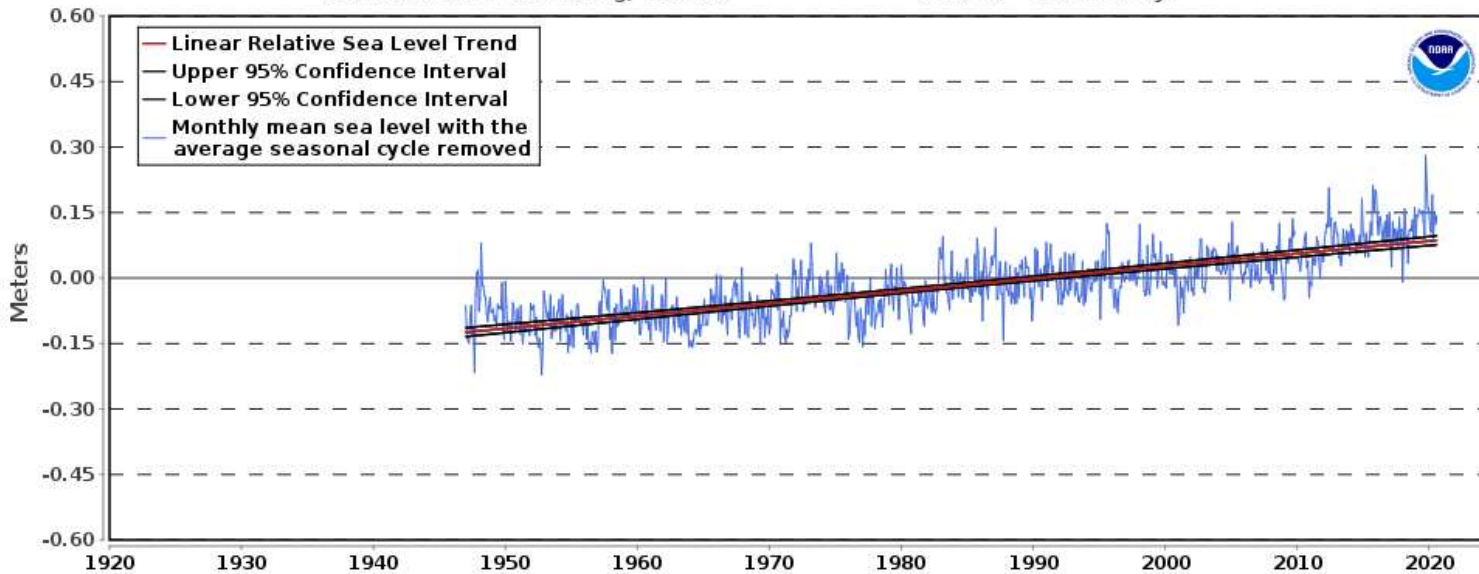
VULNERABILITY  
ASSESSMENT

ADAPTATION  
STRATEGIES

IMPLEMENTATION  
STRATEGIES

8726520 St. Petersburg, Florida

2.86 +/- 0.24 mm/yr



- Data at the St Petersburg NOAA Tide Gauge has been collected continuously since 1947
- This historic data shows a trend of about ~1 ft of rise over 100 yrs
- Global SLR is ~ 3mm per year, similar to this



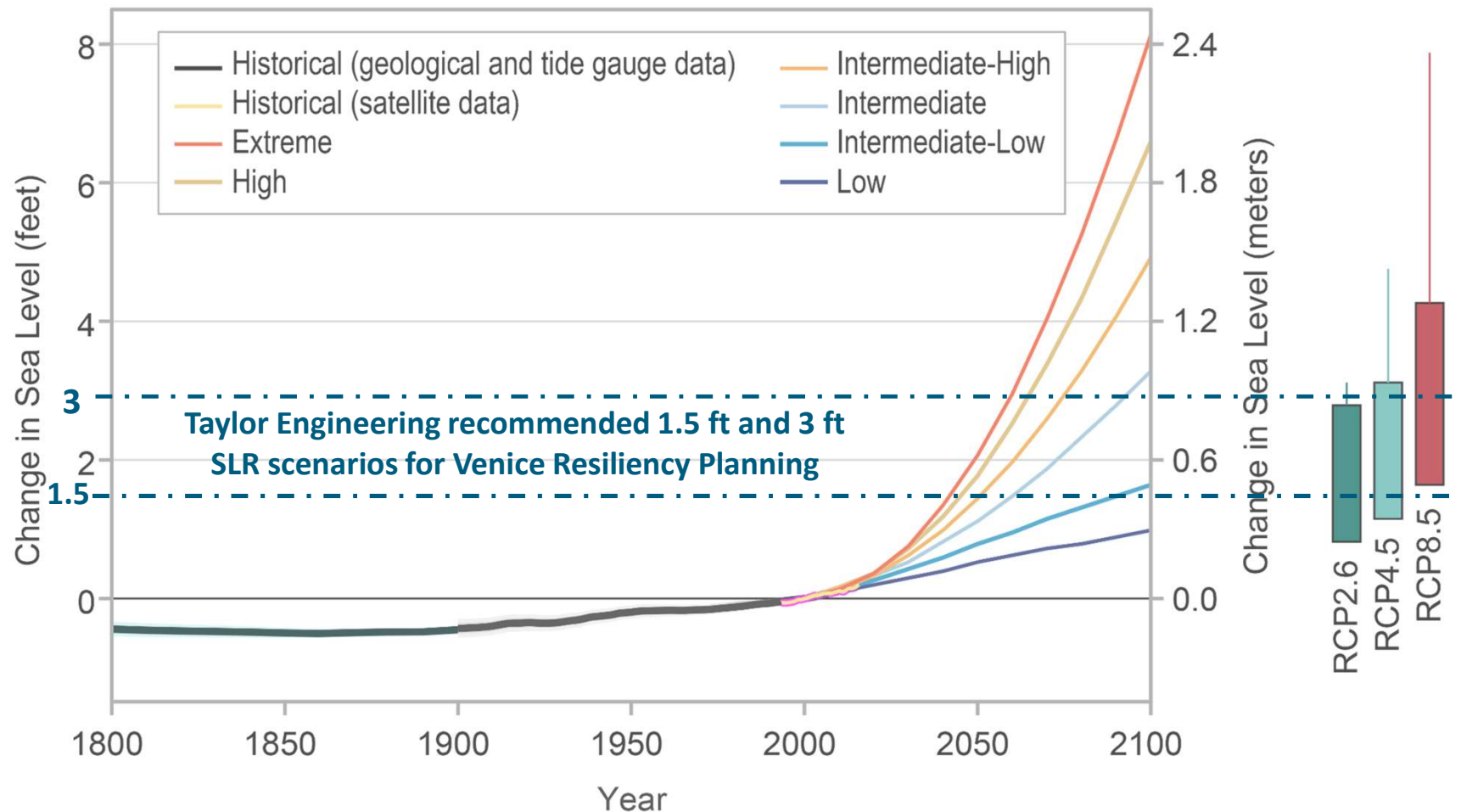
# Sea Level Trends and Projections

CONTEXT

VULNERABILITY  
ASSESSMENT

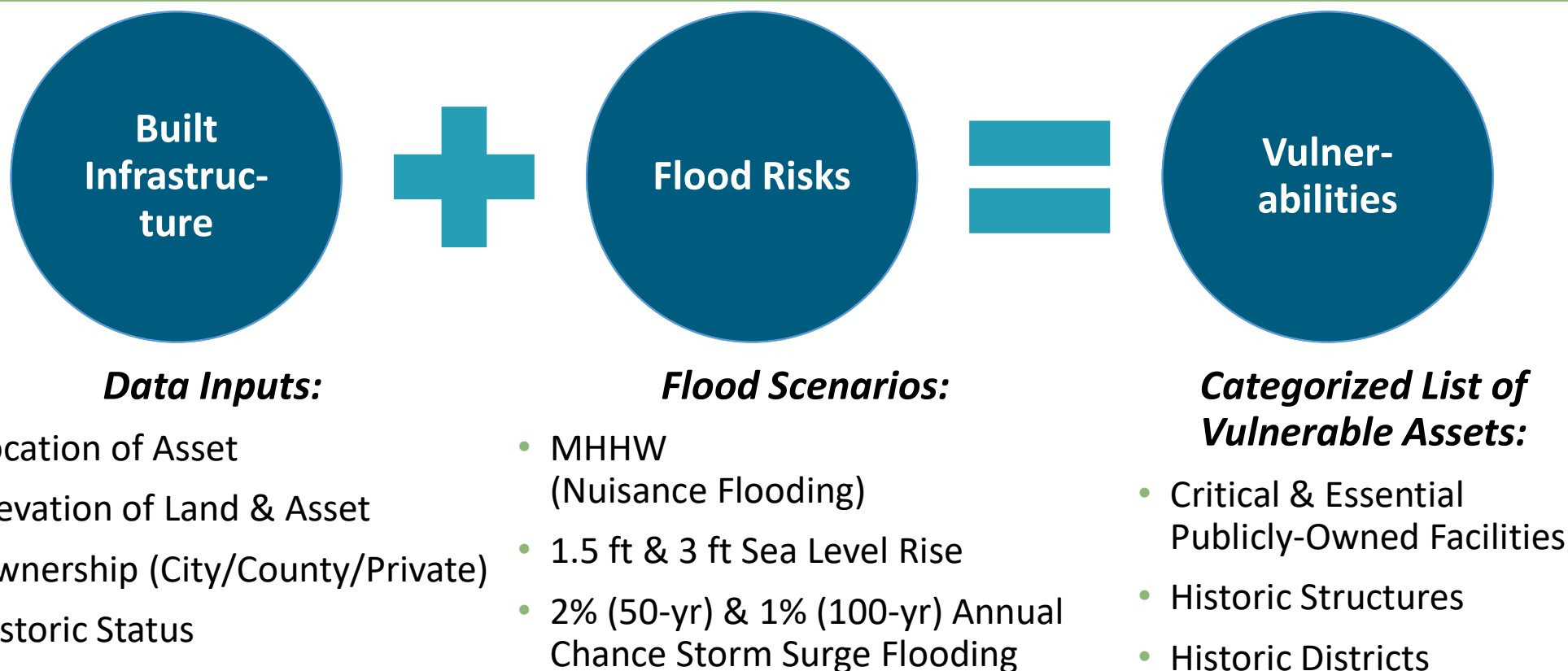
ADAPTATION  
STRATEGIES

IMPLEMENTATION  
STRATEGIES



Source: Fourth National Climate Assessment (2018) and IPCC AR5 (2013)

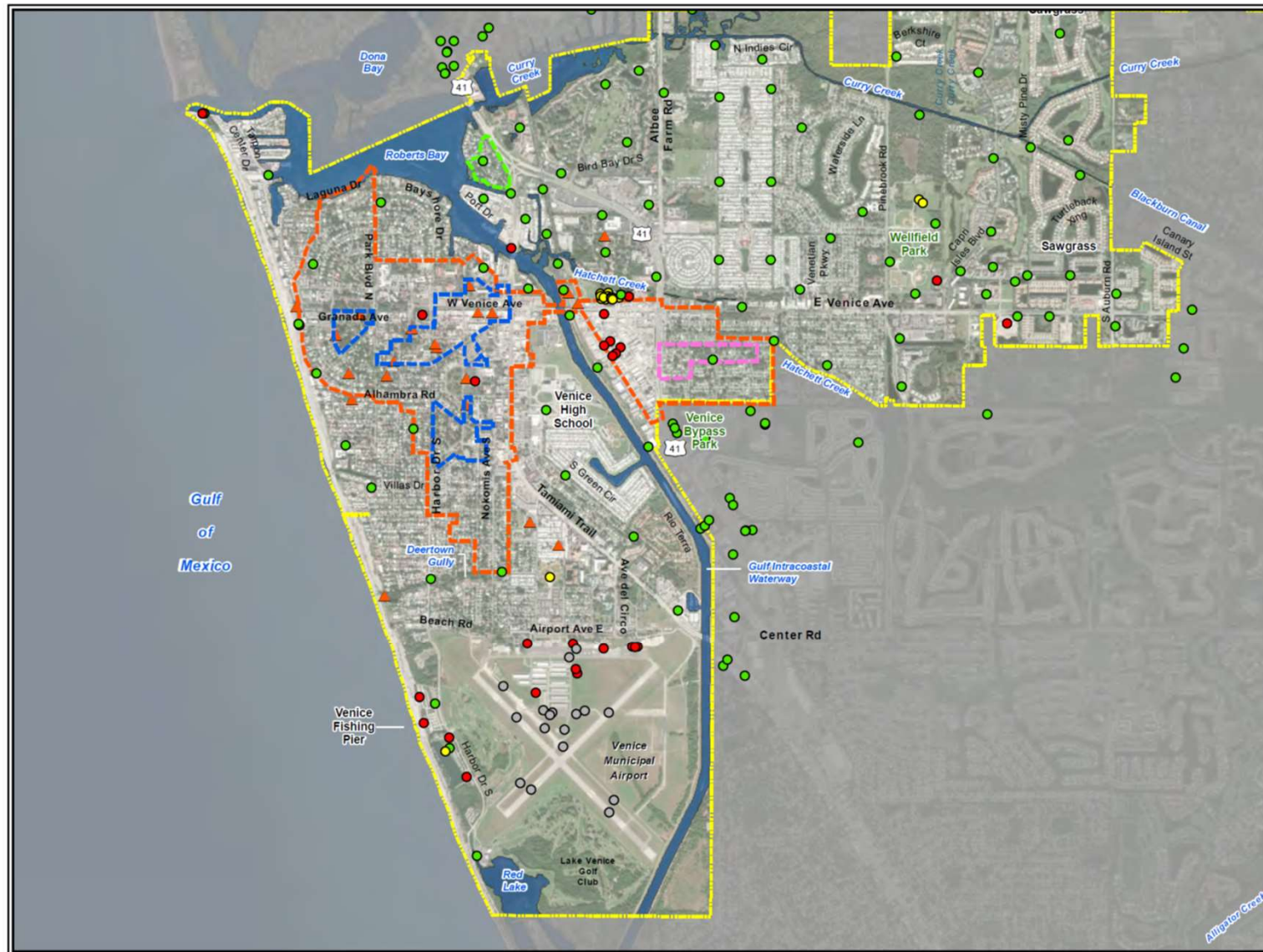
# Coastal Flooding Vulnerability Assessment



# Flood Scenarios Analyzed



Flood Inundation Scenarios	
1	2020 water level (MHHW)
2	1.5 ft sea level rise
3	3 ft sea level rise
4	2020 water level (MHHW) + 2% annual chance flood (50 yr)
5	1.5 ft sea level rise + 2% annual chance flood (50 yr)
6	3 ft sea level rise + 2% annual chance flood (50 yr)
7	2020 water level (MHHW) + 1% annual chance flood (100 yr)
8	1.5 ft sea level rise + 1% annual chance flood (100 yr)
9	3 ft sea level rise + 1% annual chance flood (100 yr)



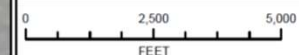
**Taylor Engineering, Inc.**  
 1800 2nd Street, Suite 714  
 Sarasota, FL 34236

CERTIFICATE OF AUTHORIZATION #4815

**MEAN HIGHER HIGH WATER  
 CRITICAL PUBLIC INFRASTRUCTURE  
 AND HISTORIC AREAS  
 WITHIN CITY LIMITS**

**Legend**

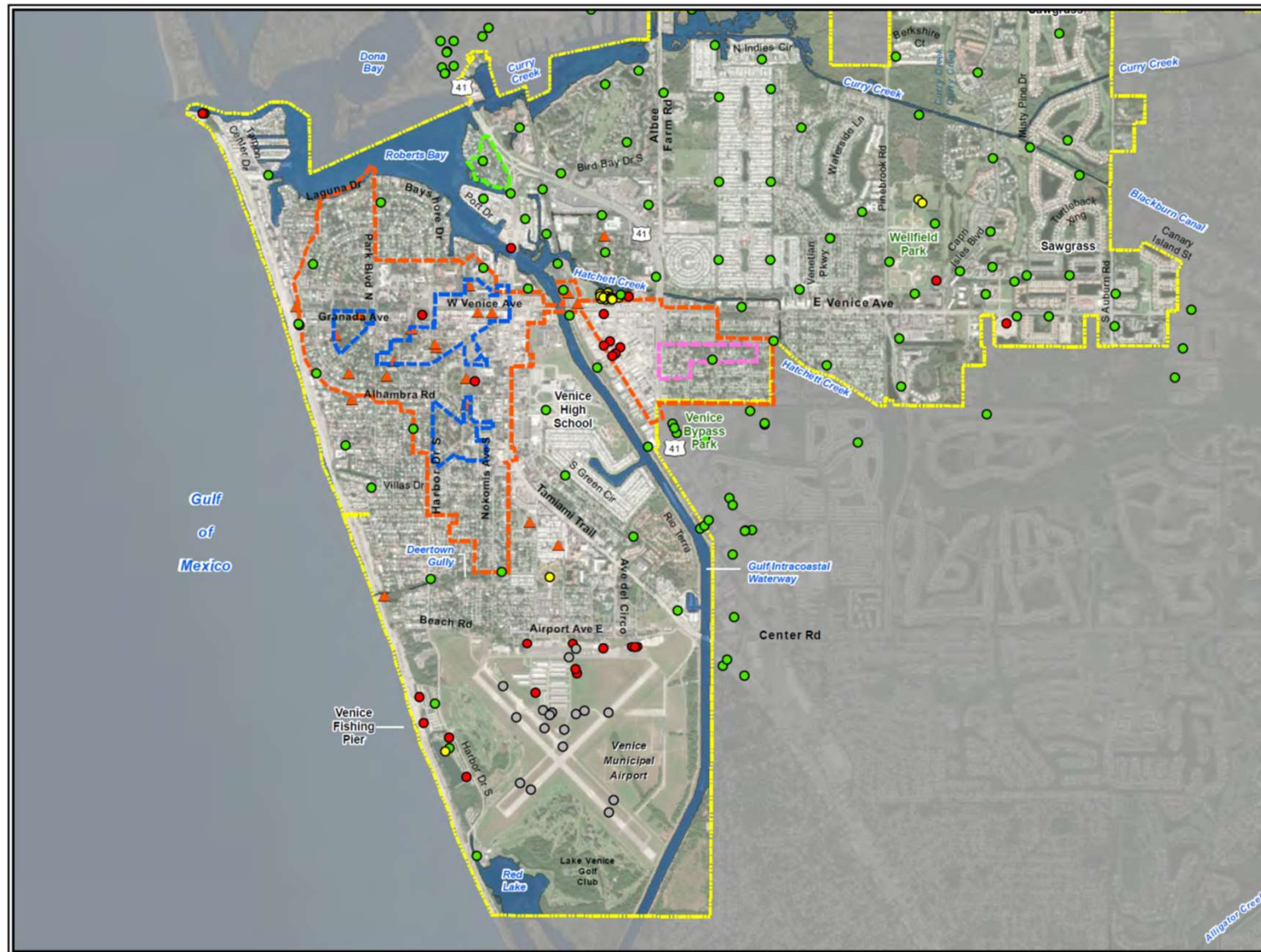
- Venice City Limits
- Critical Infrastructure**
  - Building
  - Utilities Buildings
  - Utilities Infrastructure
  - Runway/Parking
- Historic Areas/Buildings**
  - Downtown Venice
  - Eagle Point Historic District
  - Edgewood Historic District
  - John Nolen Plan of the City of Venice
  - ▲ Historic Buildings
- Return Period**
  - Mean Higher High Water



SARASOTA COUNTY, FL

Disclaimer: This figure is not intended to show the exact location of flooding and does not account for all variables affecting future flooding such as ground water impacts, changing precipitation patterns, future construction, or erosion. As such, actual future flooding may differ from this graphic. This graphic should be used strictly as a planning reference tool and not for navigation, permitting, insurance rating, or other legal or regulatory purposes.





**Taylor Engineering, Inc.**  
1800 2nd Street, Suite 714  
Sarasota, FL 34236  
CERTIFICATE OF AUTHORIZATION #4815

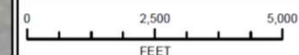
# **1.5' OF SEA LEVEL RISE CRITICAL PUBLIC INFRASTRUCTURE AND HISTORIC AREAS WITHIN CITY LIMITS**

## **Legend**

- Venice City Limits
- Critical Infrastructure**
  - Building
  - Utilities Buildings
  - Utilities Infrastructure
  - Runway/Parking
- Historic Areas/Buildings**
  - Downtown Venice
  - Eagle Point Historic District
  - Edgewood Historic District
  - John Nolen Plan of the City of Venice
  - Historic Buildings

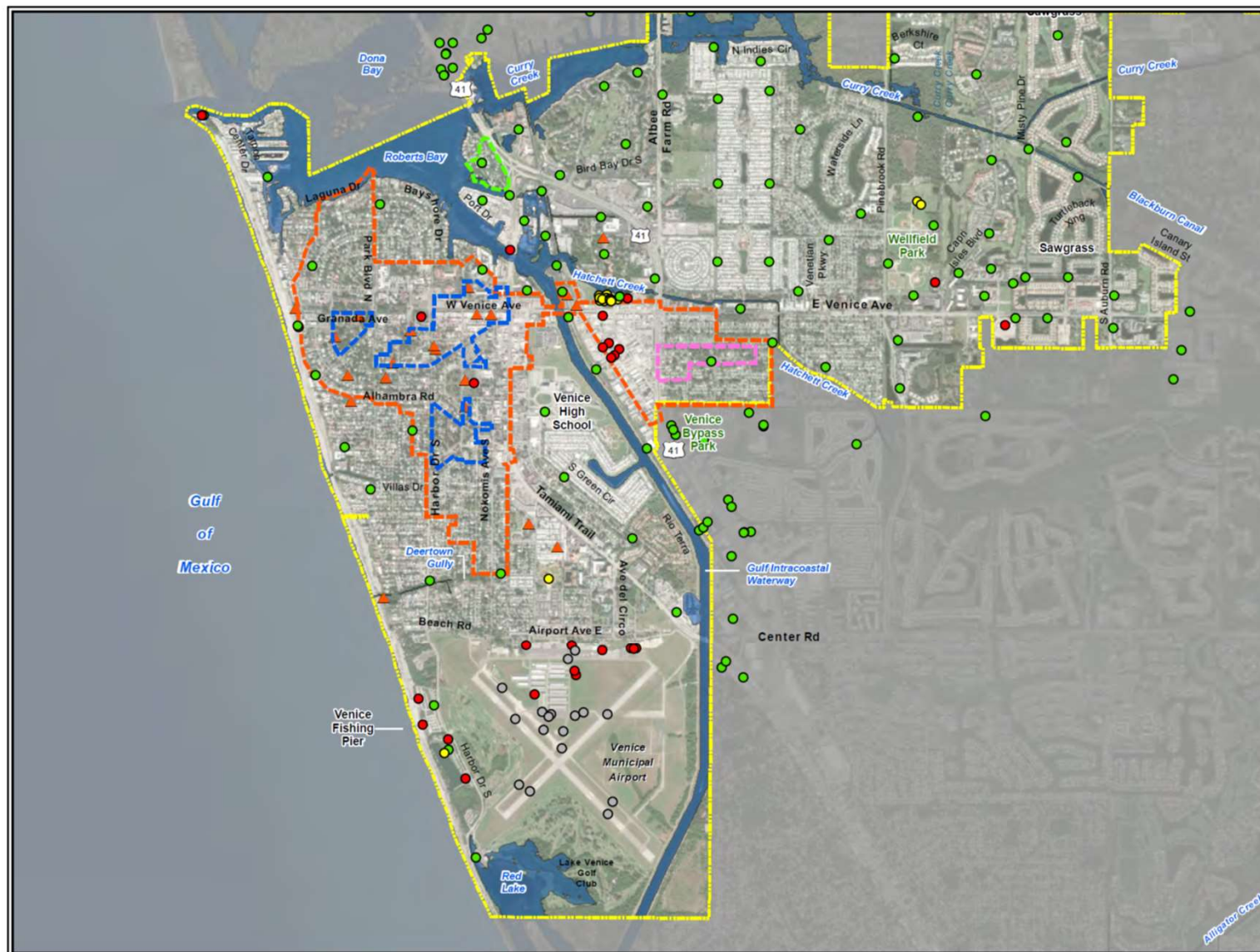
## **Return Period**

- 1.5' of Sea Level Rise



SARASOTA COUNTY, FL

Disclaimer: This figure is not intended to show the exact location of flooding and does not account for all variables affecting future flooding such as ground water impacts, changing precipitation patterns, future construction, or erosion. As such, actual future flooding may differ from this graphic. This graphic should be used strictly as a planning reference tool and not for navigation, permitting, insurance rating, or other legal or regulatory purposes.



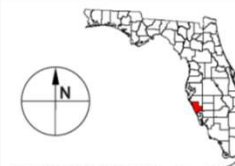
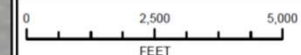
Taylor Engineering, Inc.  
1800 2nd Street, Suite 714  
Sarasota, FL 34236

CERTIFICATE OF AUTHORIZATION #4815

### 3' OF SEA LEVEL RISE CRITICAL PUBLIC INFRASTRUCTURE AND HISTORIC AREAS WITHIN CITY LIMITS

#### Legend

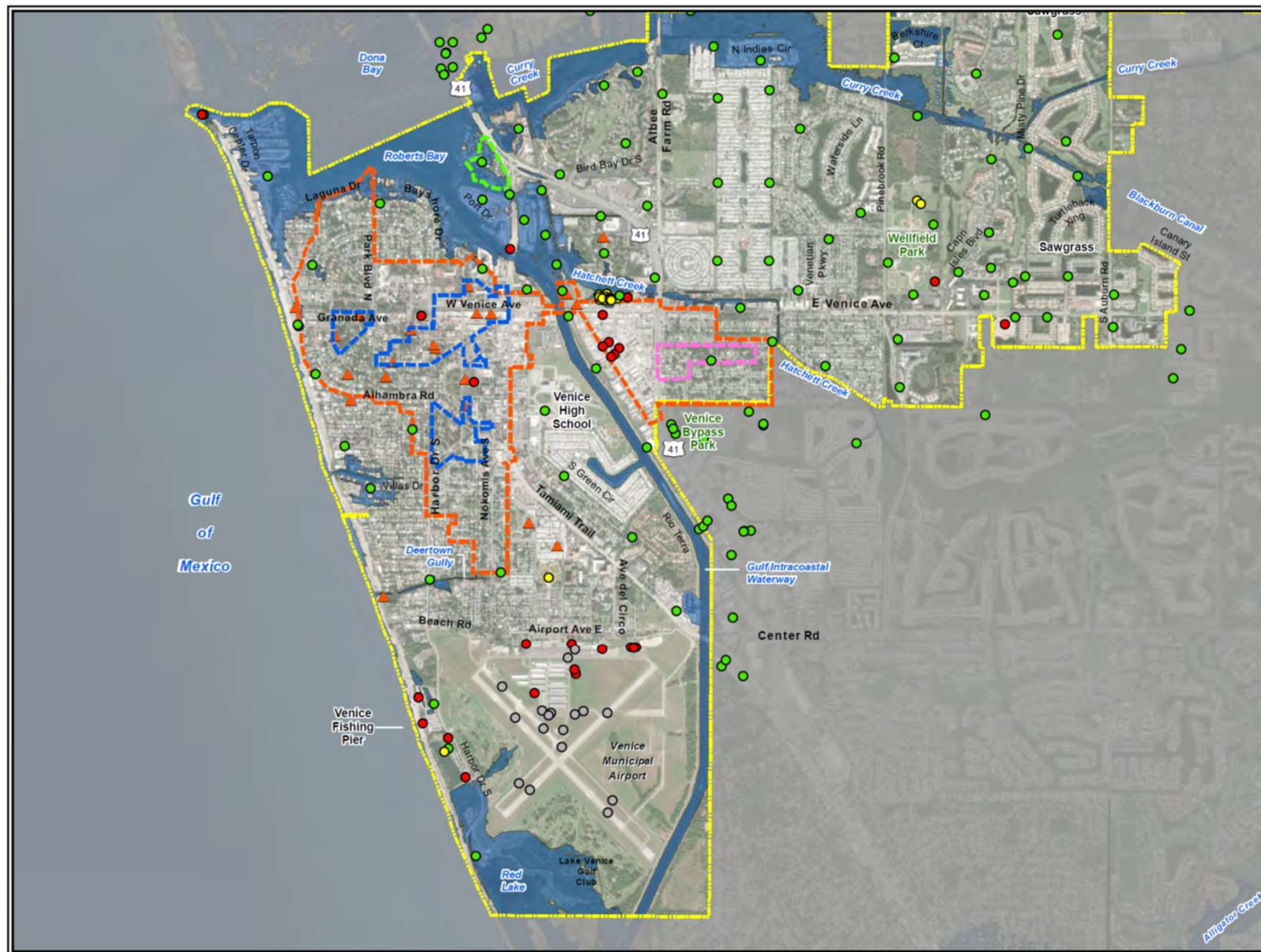
- Venice City Limits
- Critical Infrastructure**
  - Building
  - Utilities Buildings
  - Utilities Infrastructure
  - Runway/Parking
- Historic Areas/Buildings**
  - Downtown Venice
  - Eagle Point Historic District
  - Edgewood Historic District
  - John Nolen Plan of the City of Venice
  - ▲ Historic Buildings
- Return Period**
  - 3' of Sea Level Rise



SARASOTA COUNTY, FL

Disclaimer: This figure is not intended to show the exact location of flooding and does not account for all variables affecting future flooding such as ground water impacts, changing precipitation patterns, future construction, or erosion. As such, actual future flooding may differ from this graphic. This graphic should be used strictly as a planning reference tool and not for navigation, permitting, insurance rating, or other legal or regulatory purposes.





**Taylor Engineering, Inc.**

1800 2nd Street, Suite 714  
Sarasota, FL 34236

CERTIFICATE OF AUTHORIZATION #4815

**2% ANNUAL CHANCE SWEL  
CRITICAL PUBLIC INFRASTRUCTURE  
AND HISTORIC AREAS  
WITHIN CITY LIMITS**

**Legend**

Yellow dashed line: Venice City Limits

**Critical Infrastructure**

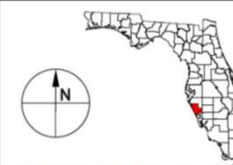
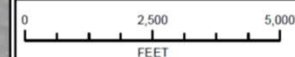
- Red dot: Building
- Yellow dot: Utilities Buildings
- Green dot: Utilities Infrastructure
- White circle: Runway/Parking

**Historic Areas/Buildings**

- Blue outline: Downtown Venice
- Green outline: Eagle Point Historic District
- Pink outline: Edgewood Historic District
- Orange outline: John Nolen Plan of the City of Venice
- Red triangle: Historic Buildings

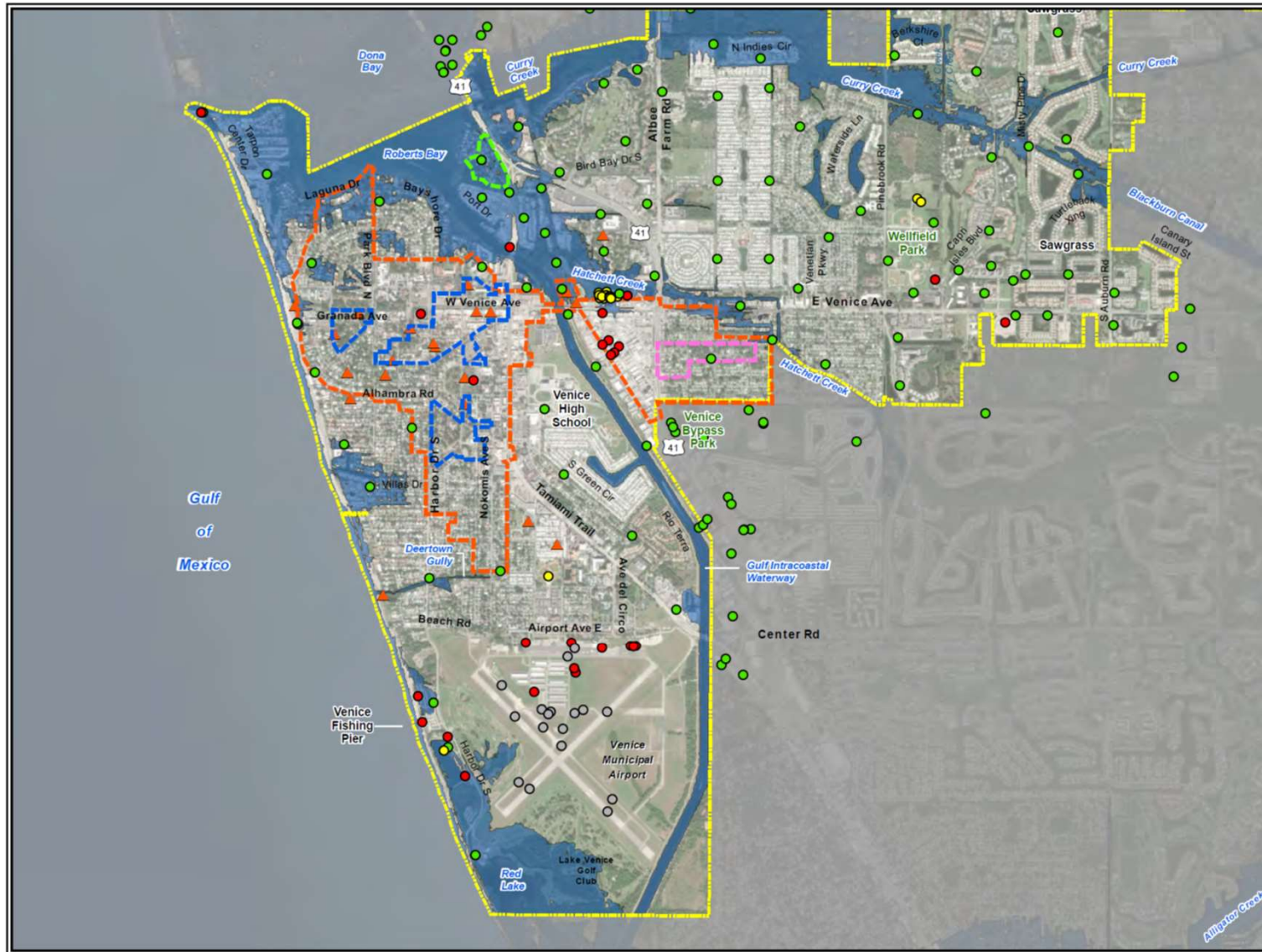
**Return Period**

Blue shaded area: 2% Annual Chance SWEL



SARASOTA COUNTY, FL

Disclaimer: This figure is not intended to show the exact location of flooding and does not account for all variables affecting future flooding such as ground water impacts, changing precipitation patterns, future construction, or erosion. As such, actual future flooding may differ from this graphic. This graphic should be used strictly as a planning reference tool and not for navigation, permitting, insurance rating, or other legal or regulatory purposes.

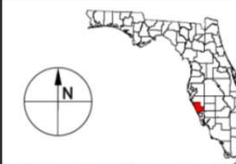
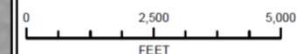


**Taylor Engineering, Inc.**  
1800 2nd Street, Suite 714  
Sarasota, FL 34236  
CERTIFICATE OF AUTHORIZATION #4815

**2% ANNUAL CHANCE SWL  
PLUS 1.5' OF SEA LEVEL RISE  
CRITICAL PUBLIC INFRASTRUCTURE  
AND HISTORIC AREAS  
WITHIN CITY LIMITS**

**Legend**

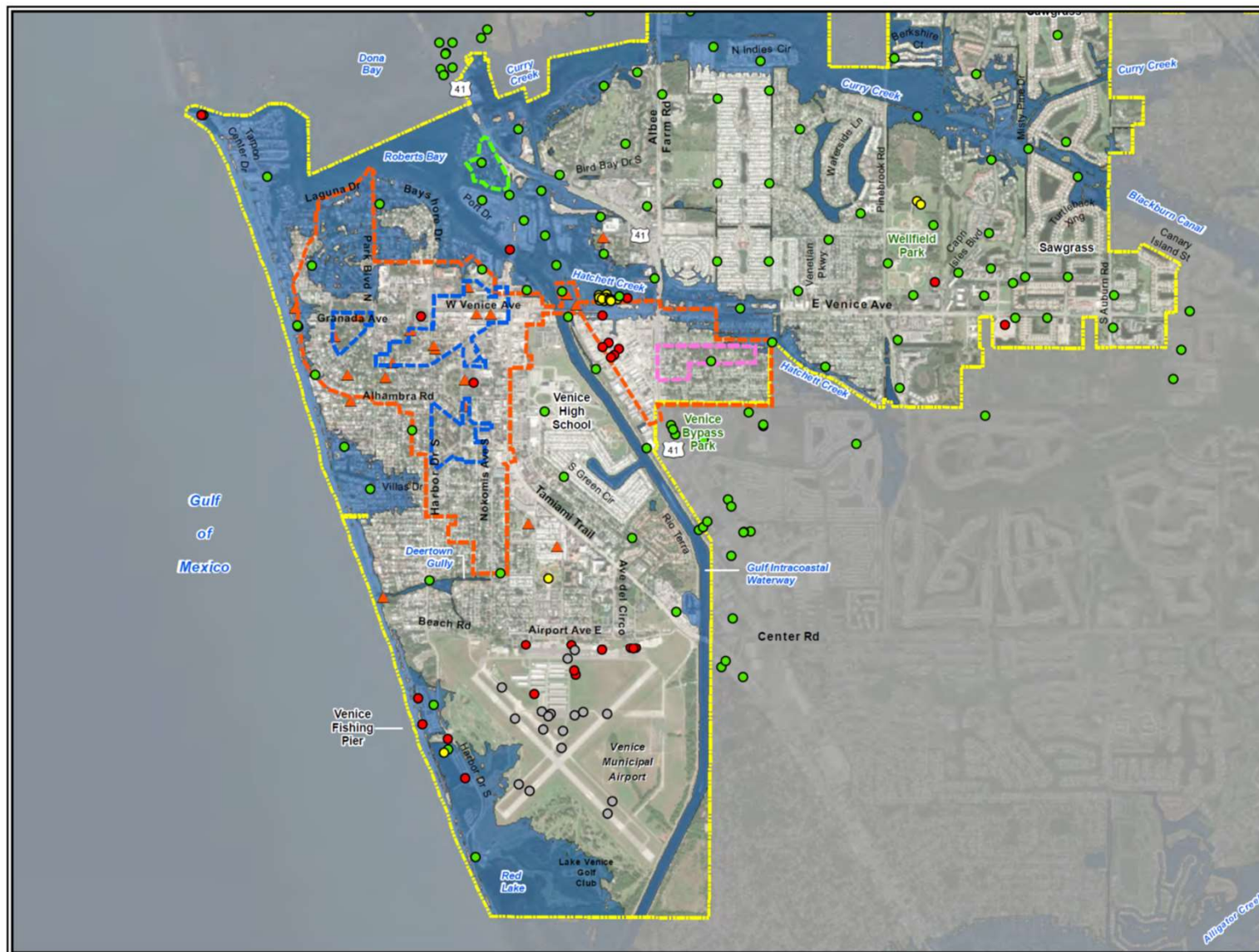
- Venice City Limits
- Critical Infrastructure**
  - Building
  - Utilities Buildings
  - Utilities Infrastructure
  - Runway/Parking
- Historic Areas/Buildings**
  - Downtown Venice
  - Eagle Point Historic District
  - Edgewood Historic District
  - John Nolen Plan of the City of Venice
  - ▲ Historic Buildings
- Return Period**
  - 2% Annual Chance SWL plus 1.5' SLR



SARASOTA COUNTY, FL

Disclaimer: This figure is not intended to show the exact location of flooding and does not account for all variables affecting future flooding such as ground water impacts, changing precipitation patterns, future construction, or erosion. As such, actual future flooding may differ from this graphic. This graphic should be used strictly as a planning reference tool and not for navigation, permitting, insurance rating, or other legal or regulatory purposes.





**Taylor Engineering, Inc.**  
1800 2nd Street, Suite 714  
Sarasota, FL 34236  
CERTIFICATE OF AUTHORIZATION #4815

**2% ANNUAL CHANCE SWEL  
PLUS 3' OF SEA LEVEL RISE  
CRITICAL PUBLIC INFRASTRUCTURE  
AND HISTORIC AREAS  
WITHIN CITY LIMITS**

**Legend**

  Venice City Limits

**Critical Infrastructure**

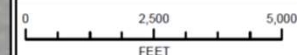
- Building
- Utilities Buildings
- Utilities Infrastructure
- Runway/Parking

**Historic Areas/Buildings**

- Downtown Venice
- Eagle Point Historic District
- Edgewood Historic District
- John Nolen Plan of the City of Venice
- ▲ Historic Buildings

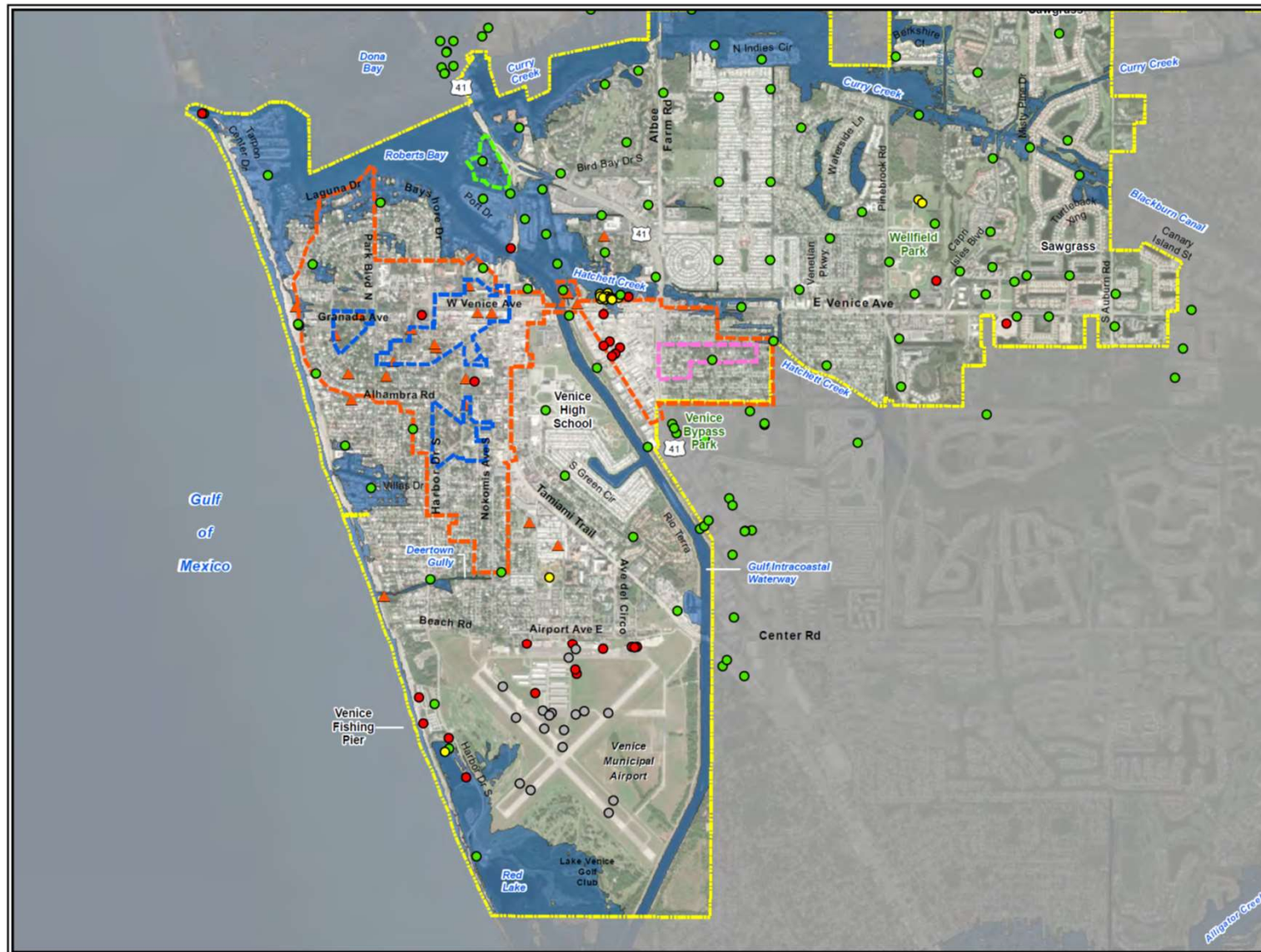
**Return Period**

  2% Annual Chance SWEL plus 3' SLR



**SARASOTA COUNTY, FL**

Disclaimer: This figure is not intended to show the exact location of flooding and does not account for all variables affecting future flooding such as ground water impacts, changing precipitation patterns, future construction, or erosion. As such, actual future flooding may differ from this graphic. This graphic should be used strictly as a planning reference tool and not for navigation, permitting, insurance rating, or other legal or regulatory purposes.



**Taylor Engineering, Inc.**  
1800 2nd Street, Suite 714  
Sarasota, FL 34236  
CERTIFICATE OF AUTHORIZATION # 4815

# **1% ANNUAL CHANCE SWEL CRITICAL PUBLIC INFRASTRUCTURE AND HISTORIC AREAS WITHIN CITY LIMITS**

## **Legend**

Venice City Limits

## **Critical Infrastructure**

● Building

● Utilities Buildings

● Utilities Infrastructure

○ Runway/Parking

## **Historic Areas/Buildings**

Downtown Venice

Eagle Point Historic District

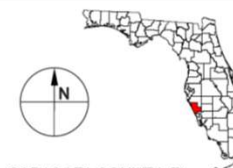
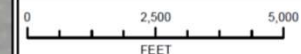
Edgewood Historic District

John Nolen Plan of the City of Venice

▲ Historic Buildings

## **Return Period**

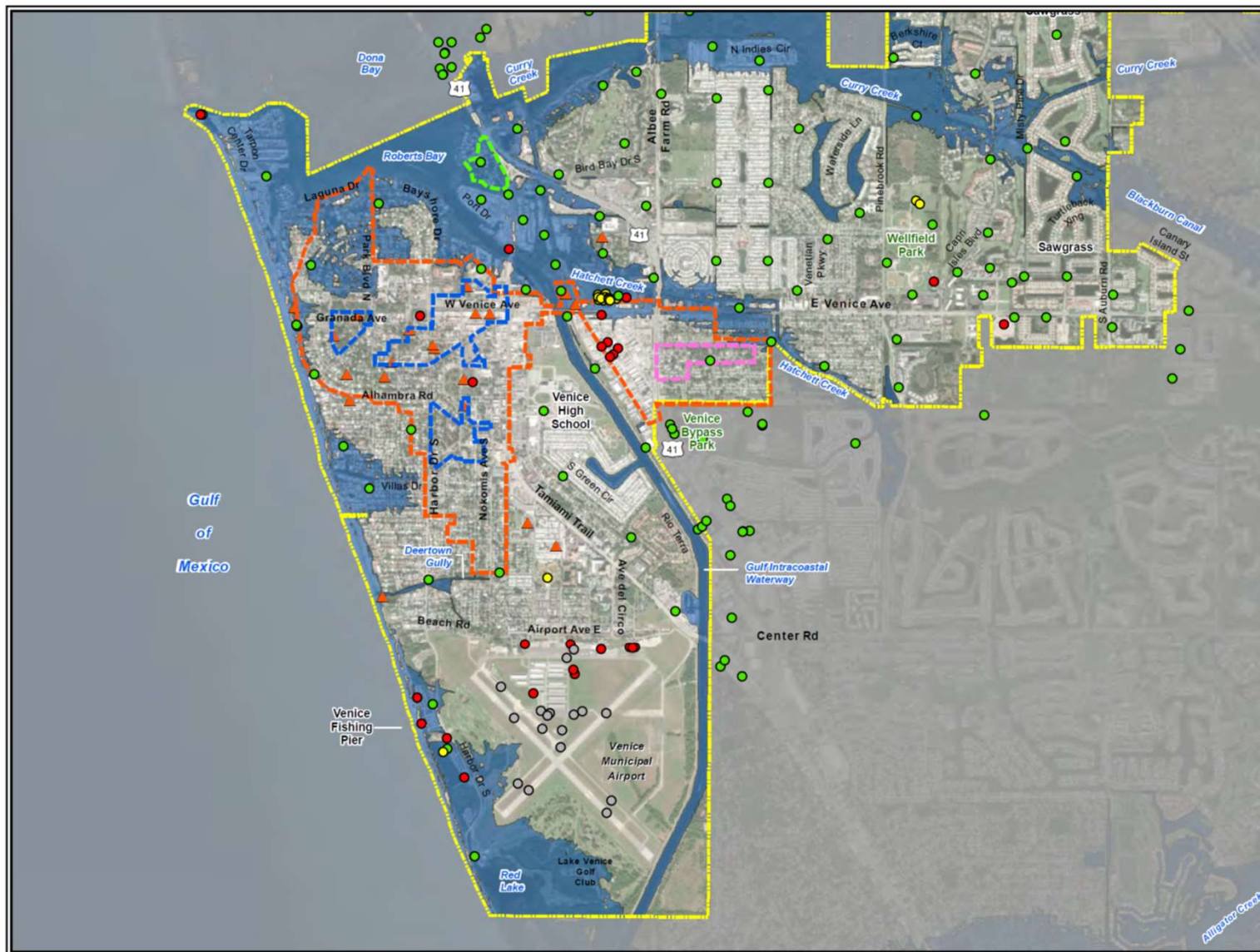
1% Annual Chance SWEL



**SARASOTA COUNTY, FL**

Disclaimer: This figure is not intended to show the exact location of flooding and does not account for all variables affecting future flooding such as ground water impacts, changing precipitation patterns, future construction, or erosion. As such, actual future flooding may differ from this graphic. This graphic should be used strictly as a planning reference tool and not for navigation, permitting, insurance rating, or other legal or regulatory purposes.





**Taylor Engineering, Inc.**  
1800 2nd Street, Suite 714  
Sarasota, FL 34236  
CERTIFICATE OF AUTHORIZATION #4815

**1% ANNUAL CHANCE SWEL  
PLUS 1.5' OF SEA LEVEL RISE  
CRITICAL PUBLIC INFRASTRUCTURE  
AND HISTORIC AREAS  
WITHIN CITY LIMITS**

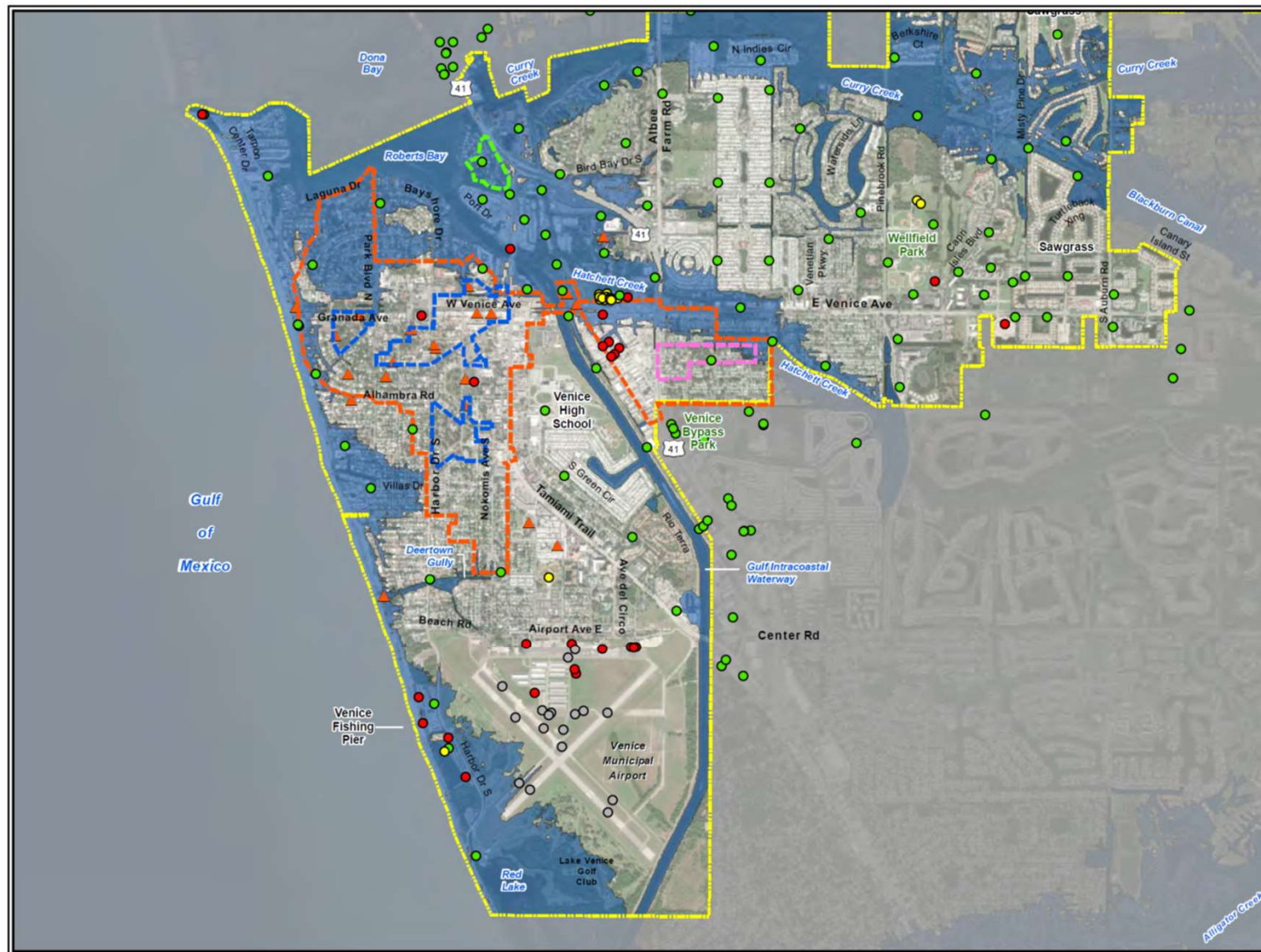
**Legend**

- Venice City Limits
- Critical Infrastructure**
  - Building
  - Utilities Buildings
  - Utilities Infrastructure
  - Runway/Parking
- Historic Areas/Buildings**
  - Downtown Venice
  - Eagle Point Historic District
  - Edgewood Historic District
  - John Nolen Plan of the City of Venice
  - ▲ Historic Buildings
- Return Period**
  - 1% Annual Chance SWEL plus 1.5' SLR



SARASOTA COUNTY, FL

Disclaimer: This figure is not intended to show the exact location of flooding and does not account for all variables affecting future flooding such as ground water impacts, changing precipitation patterns, future construction, or erosion. As such, actual future flooding may differ from this graphic. This graphic should be used strictly as a planning reference tool and not for navigation, permitting, insurance rating, or other legal or regulatory purposes.



**Taylor Engineering, Inc.**  
1800 2nd Street, Suite 714  
Sarasota, FL 34236  
CERTIFICATE OF AUTHORIZATION # 4815

**1% ANNUAL CHANCE SWEL  
PLUS 3' OF SEA LEVEL RISE  
CRITICAL PUBLIC INFRASTRUCTURE  
AND HISTORIC AREAS  
WITHIN CITY LIMITS**

**Legend**

  Venice City Limits

**Critical Infrastructure**

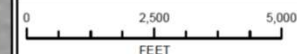
- Building
- Utilities Buildings
- Utilities Infrastructure
- Runway/Parking

**Historic Areas/Buildings**

- Downtown Venice
- Eagle Point Historic District
- Edgewood Historic District
- John Nolen Plan of the City of Venice
- ▲ Historic Buildings

**Return Period**

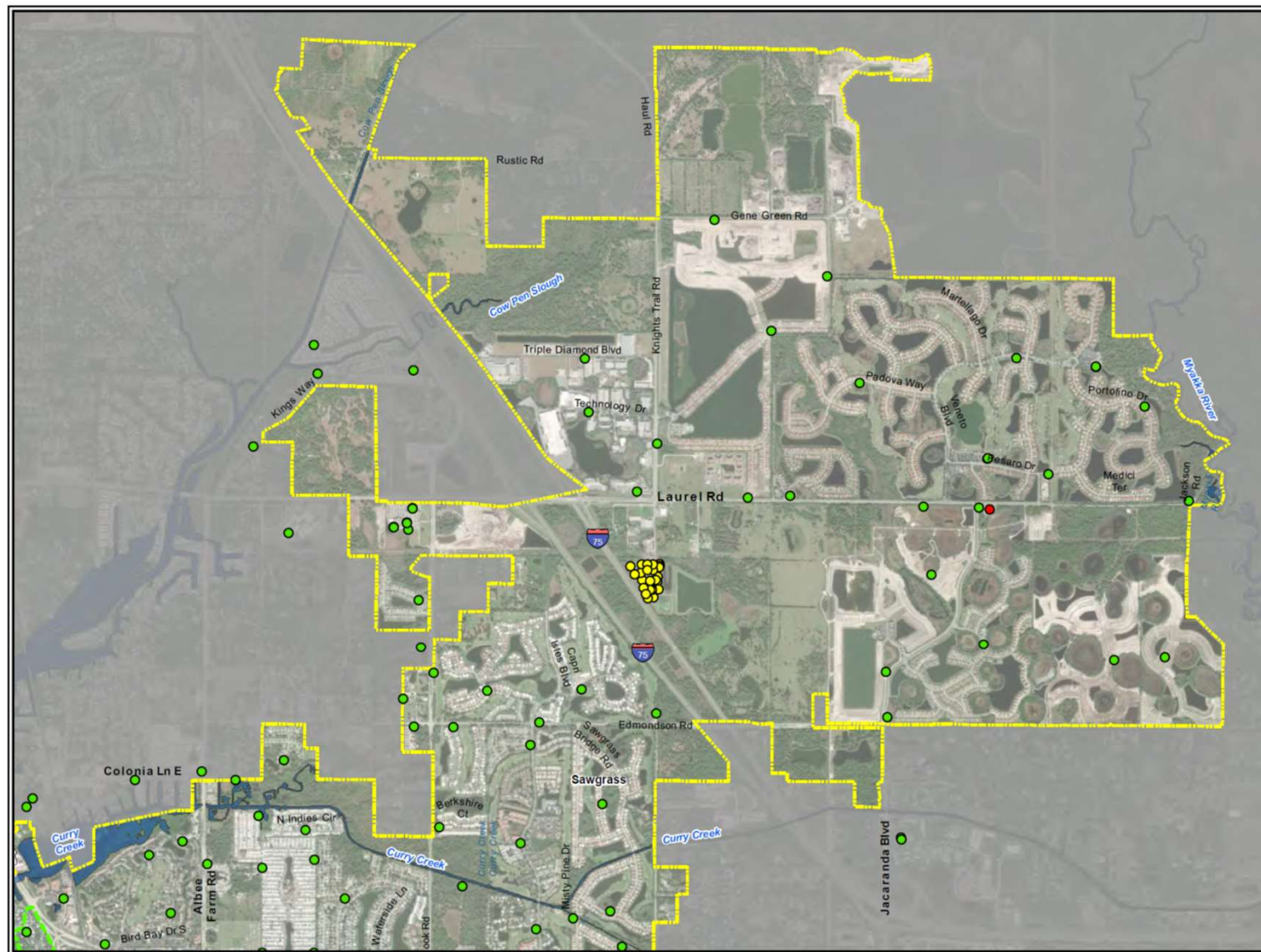
- 1% Annual Chance SWEL plus 3' SLR



SARASOTA COUNTY, FL

Disclaimer: This figure is not intended to show the exact location of flooding and does not account for all variables affecting future flooding such as ground water impacts, changing precipitation patterns, future construction, or erosion. As such, actual future flooding may differ from this graphic. This graphic should be used strictly as a planning reference tool and not for navigation, permitting, insurance rating, or other legal or regulatory purposes.





**Taylor Engineering, Inc.**  
1800 2nd Street, Suite 714  
Sarasota, FL 34236  
CERTIFICATE OF AUTHORIZATION #4615

# **MEAN HIGHER HIGH WATER CRITICAL PUBLIC INFRASTRUCTURE AND HISTORIC AREAS WITHIN CITY LIMITS**

## **Legend**

Venice City Limits

## **Critical Infrastructure**

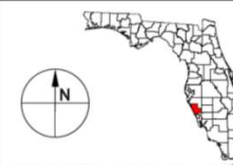
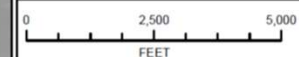
- Building
- Utilities Buildings
- Utilities Infrastructure
- Runway/Parking

## **Historic Areas/Buildings**

- Downtown Venice
- Eagle Point Historic District
- Edgewood Historic District
- John Nolen Plan of the City of Venice
- ▲ Historic Buildings

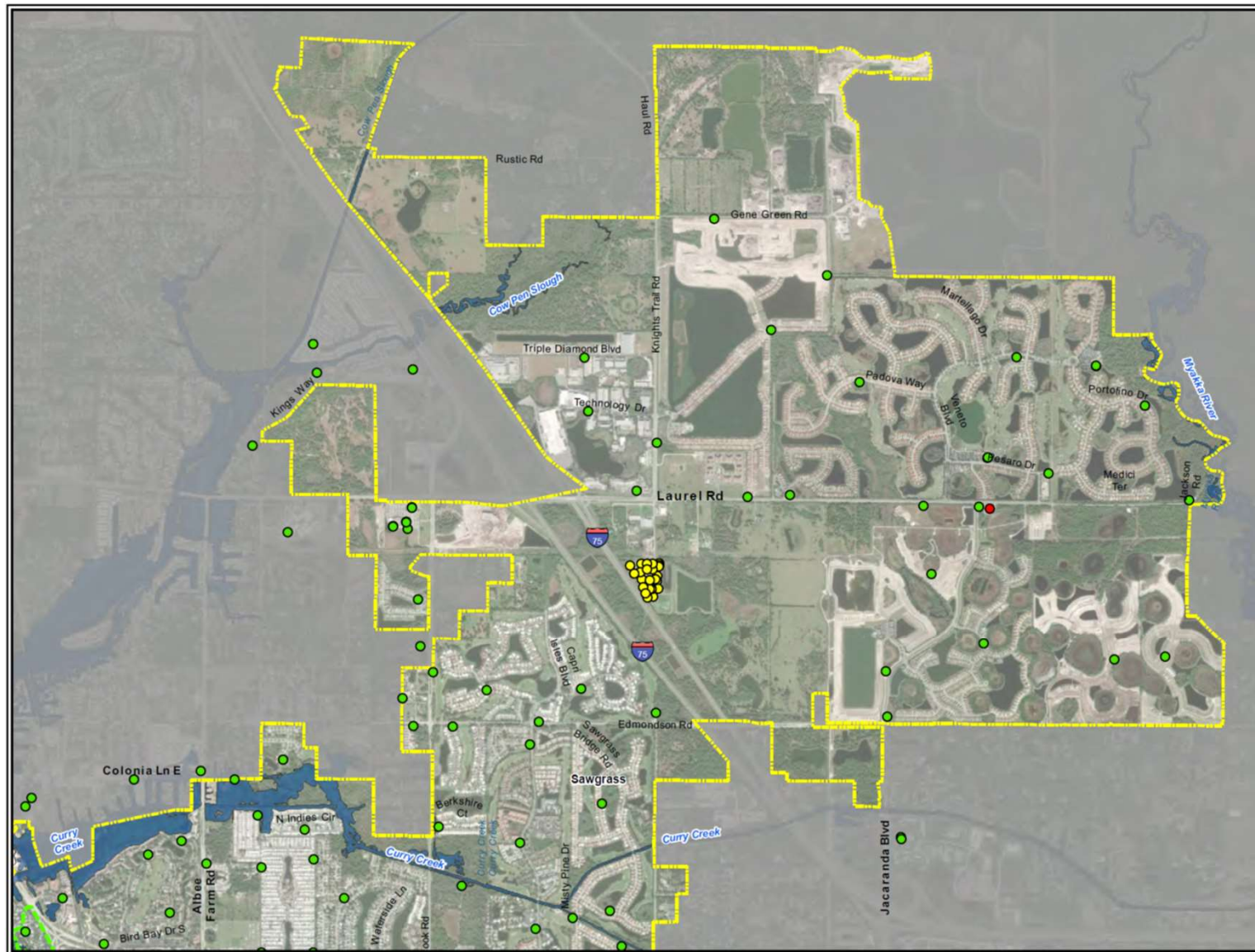
## **Return Period**

Mean Higher High Water



**SARASOTA COUNTY, FL**

Disclaimer: This figure is not intended to show the exact location of flooding and does not account for all variables affecting future flooding such as ground water impacts, changing precipitation patterns, future construction, or erosion. As such, actual future flooding may differ from this graphic. This graphic should be used strictly as a planning reference tool and not for navigation, permitting, insurance rating, or other legal or regulatory purposes.



**Taylor Engineering, Inc.**  
1800 2nd Street, Suite 714  
Sarasota, FL 34236

CERTIFICATE OF AUTHORIZATION #4815

### 3' OF SEA LEVEL RISE CRITICAL PUBLIC INFRASTRUCTURE AND HISTORIC AREAS WITHIN CITY LIMITS

#### Legend

Venice City Limits

#### Critical Infrastructure

● Building

● Utilities Buildings

● Utilities Infrastructure

● Runway/Parking

#### Historic Areas/Buildings

Downtown Venice

Eagle Point Historic District

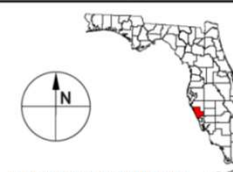
Edgewood Historic District

John Nolen Plan of the City of Venice

▲ Historic Buildings

#### Return Period

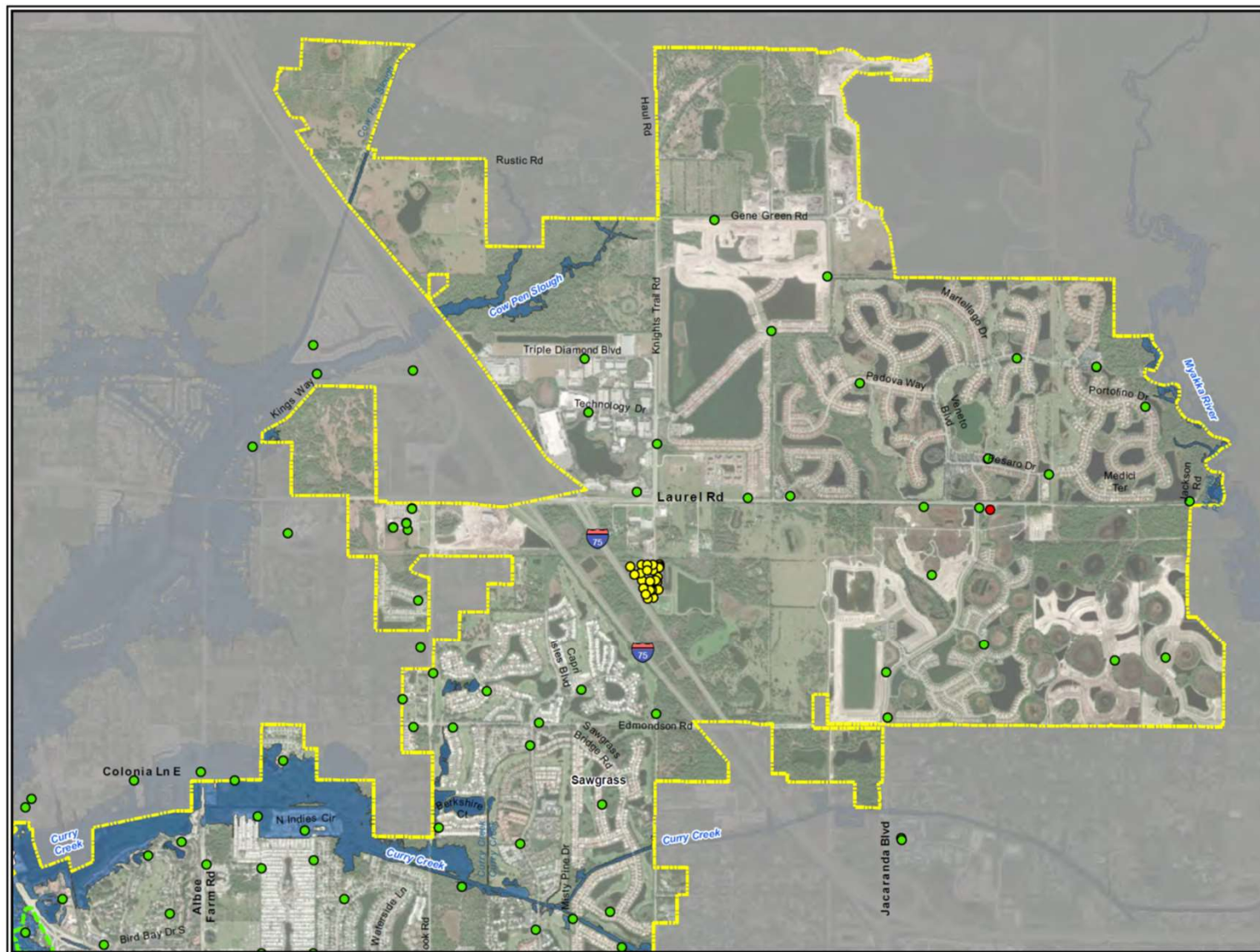
3' of Sea Level Rise



SARASOTA COUNTY, FL

Disclaimer: This figure is not intended to show the exact location of flooding and does not account for all variables affecting future flooding such as ground water impacts, changing precipitation patterns, future construction, or erosion. As such, actual future flooding may differ from this graphic. This graphic should be used strictly as a planning reference tool and not for navigation, permitting, insurance rating, or other legal or regulatory purposes.





**Taylor Engineering, Inc.**

1800 2nd Street, Suite 714  
Sarasota, FL 34236

CERTIFICATE OF AUTHORIZATION #4815

**2% ANNUAL CHANCE SWEL  
CRITICAL PUBLIC INFRASTRUCTURE  
AND HISTORIC AREAS  
WITHIN CITY LIMITS**

**Legend**

Yellow dashed line: Venice City Limits

**Critical Infrastructure**

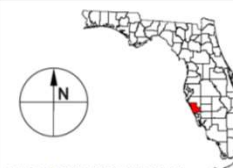
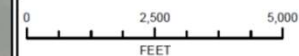
- Red dot: Building
- Yellow dot: Utilities Buildings
- Green dot: Utilities Infrastructure
- White circle: Runway/Parking

**Historic Areas/Buildings**

- Blue outline: Downtown Venice
- Green outline: Eagle Point Historic District
- Pink outline: Edgewood Historic District
- Orange outline: John Nolen Plan of the City of Venice
- Red triangle: Historic Buildings

**Return Period**

- Blue shaded area: 2% Annual Chance SWEL

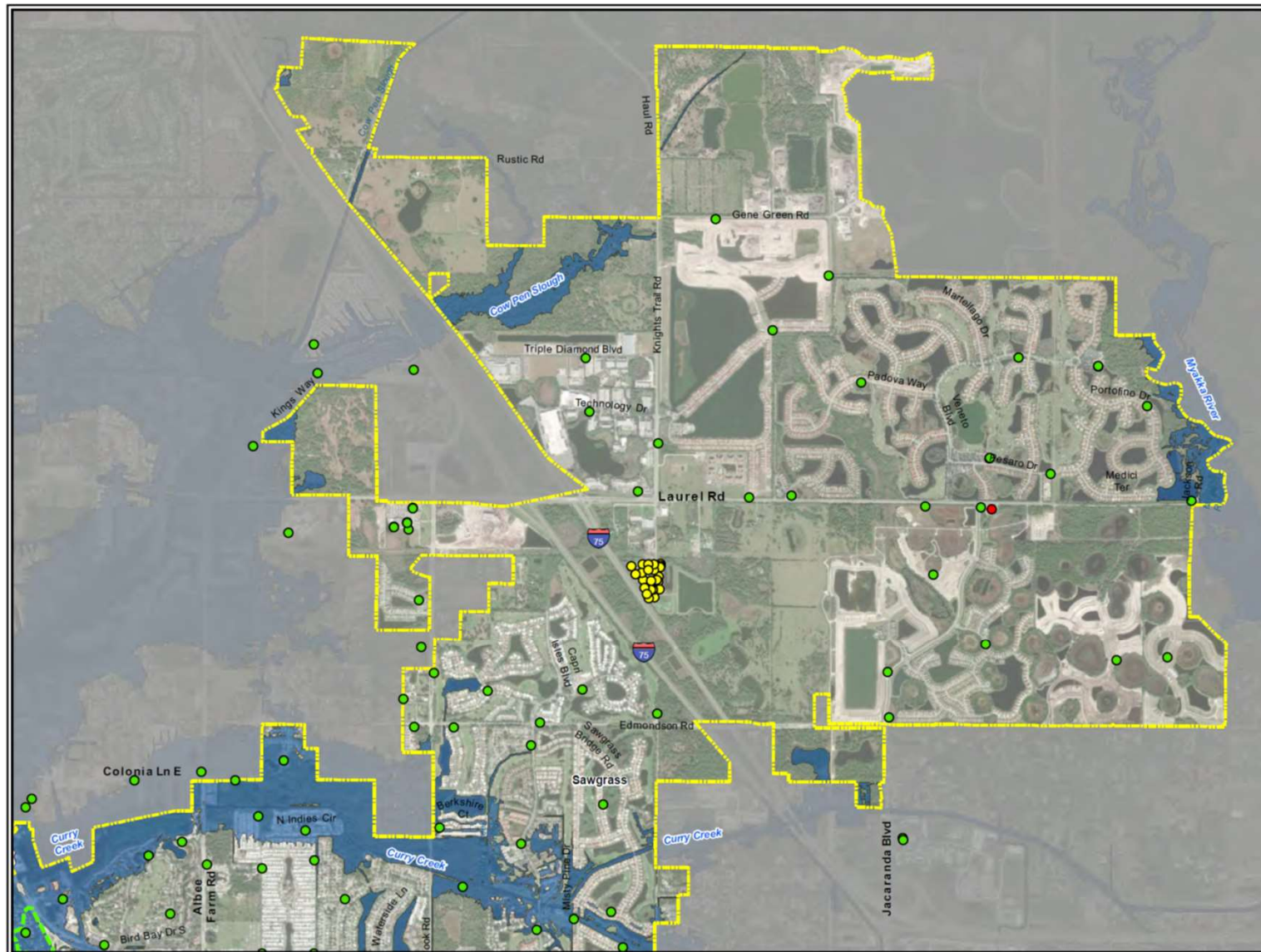


**SARASOTA COUNTY, FL**

Disclaimer: This figure is not intended to show the exact location of flooding and does not account for all variables affecting future flooding such as ground water impacts, changing precipitation patterns, future construction, or erosion. As such, actual future flooding may differ from this graphic. This graphic should be used strictly as a planning reference tool and not for navigation, permitting, insurance rating, or other legal or regulatory purposes.







**Taylor Engineering, Inc.**

1800 2nd Street, Suite 714  
Sarasota, FL 34236

CERTIFICATE OF AUTHORIZATION # 4815

**2% ANNUAL CHANCE SWEL  
PLUS 3' OF SEA LEVEL RISE  
CRITICAL PUBLIC INFRASTRUCTURE  
AND HISTORIC AREAS  
WITHIN CITY LIMITS**

**Legend**

Venice City Limits

**Critical Infrastructure**

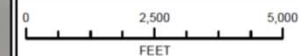
- Building
- Utilities Buildings
- Utilities Infrastructure
- Runway/Parking

**Historic Areas/Buildings**

- Downtown Venice
- Eagle Point Historic District
- Edgewood Historic District
- John Nolen Plan of the City of Venice
- ▲ Historic Buildings

**Return Period**

- 2% Annual Chance SWEL plus 3' SLR



**SARASOTA COUNTY, FL**

Disclaimer: This figure is not intended to show the exact location of flooding and does not account for all variables affecting future flooding such as ground water impacts, changing precipitation patterns, future construction, or erosion. As such, actual future flooding may differ from this graphic. This graphic should be used strictly as a planning reference tool and not for navigation, permitting, insurance rating, or other legal or regulatory purposes.



# Summary of Vulnerability Analysis



	Total Number of Assets Evaluated (or Square Ft for District)	1.5 ft SLR	3.0 ft SLR	2% Annual Chance Flood	1% Annual Chance Flood	1.5 ft SLR + 2% Annual Chance	1.5 ft SLR + 1% Annual Chance	3.0 ft SLR + 2% Annual Chance	3.0 ft SLR + 1% Annual Chance
Critical Assets	258	0%	2%	11%	16%	16%	22%	23%	34%
Historic Assets	21	0%	0%	0%	10%	10%	19%	19%	24%
Edgewood Historic District	1,224,335	0%	0%	0%	0%	0%	0%	0%	9%
Eagle Point Historic District	653,998	2%	7%	72%	96%	99%	94%	100%	100%
John Nolen Plan	34,595,339	0%	0%	0%	0%	0%	0%	0%	23%
Downtown Venice ACD	4,994,235	0%	0%	0%	0%	0%	0%	0%	1%

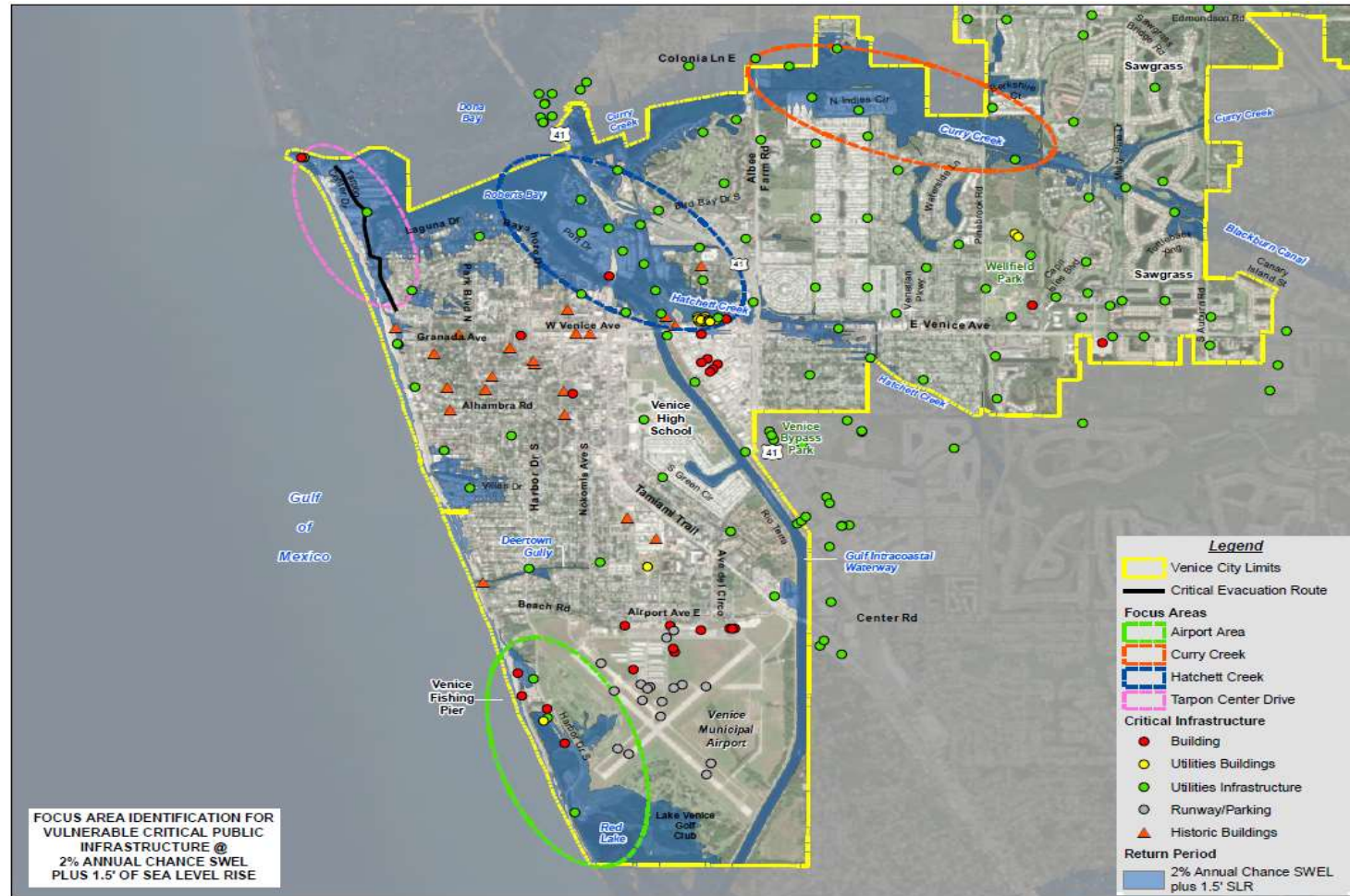
# Recommended Focus Areas

CONTEXT

VULNERABILITY  
ASSESSMENT

ADAPTATION  
STRATEGIES

IMPLEMENTATION  
STRATEGIES



# Adaptation Strategies: Main Categories

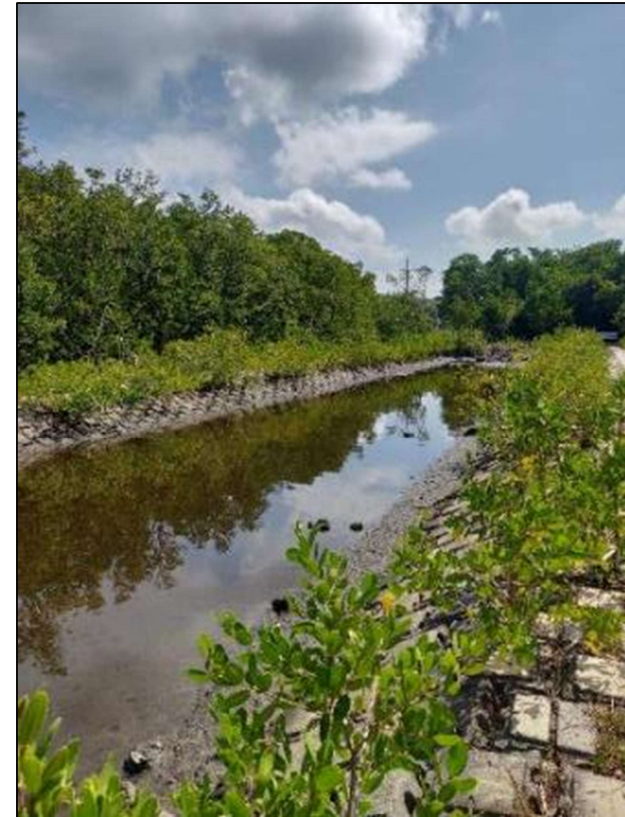
CONTEXT

VULNERABILITY  
ASSESSMENT

ADAPTATION  
STRATEGIES

IMPLEMENTATION  
STRATEGIES

- Accommodate
- Protect
- Strategic Relocation
- Avoidance





# Accommodate: Wet Floodproofing

CONTEXT

VULNERABILITY  
ASSESSMENT

ADAPTATION  
STRATEGIES

IMPLEMENTATION  
STRATEGIES



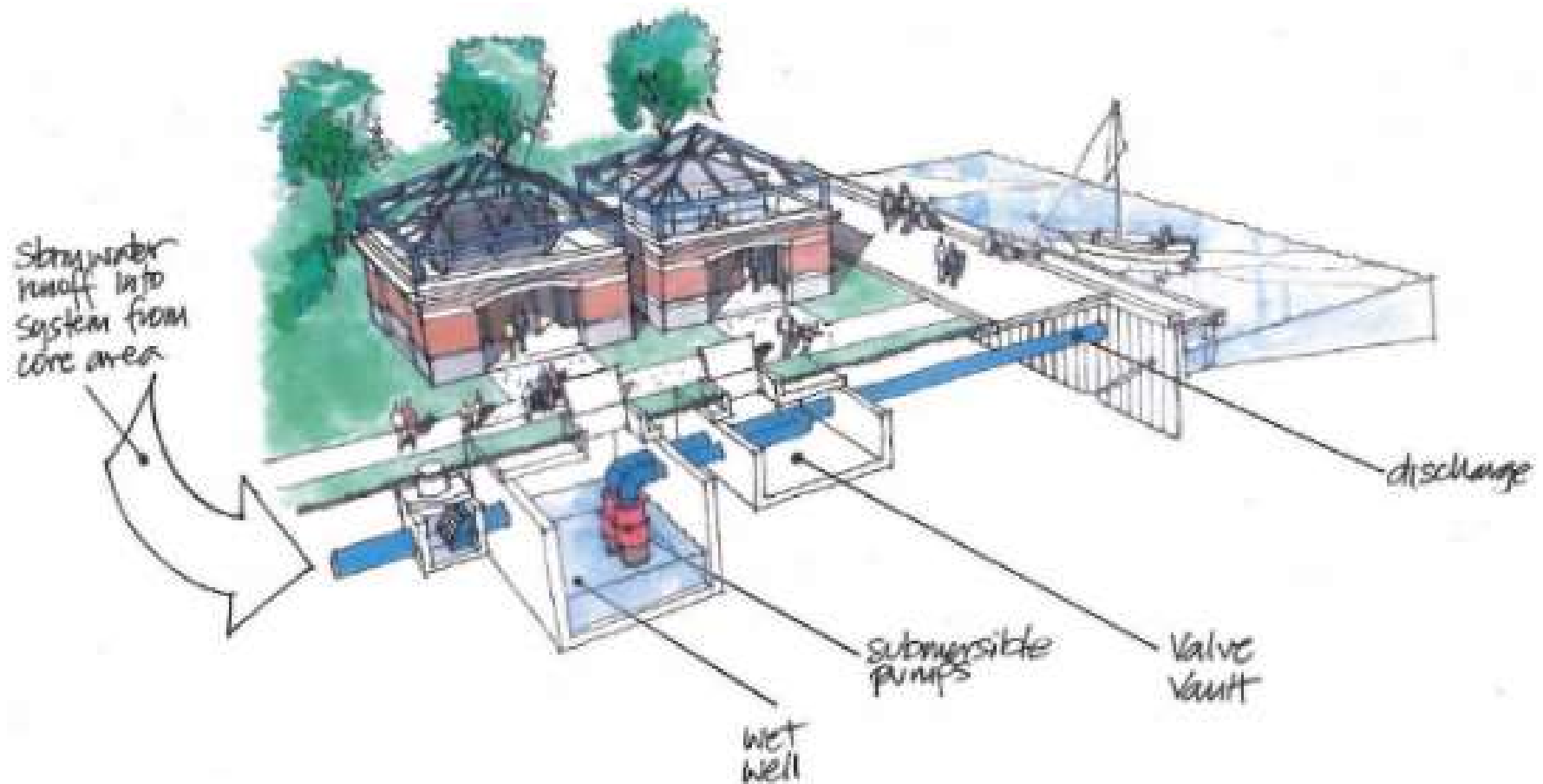
# Accommodate: Water Storage & Reuse

CONTEXT

VULNERABILITY  
ASSESSMENT

ADAPTATION  
STRATEGIES

IMPLEMENTATION  
STRATEGIES





# Protect: Raising Seawalls

CONTEXT

VULNERABILITY  
ASSESSMENT

ADAPTATION  
STRATEGIES

IMPLEMENTATION  
STRATEGIES



# Protect: Stormwater Improvements

CONTEXT

VULNERABILITY  
ASSESSMENT

ADAPTATION  
STRATEGIES

IMPLEMENTATION  
STRATEGIES



# Strategic Relocation: Move Assets

CONTEXT

VULNERABILITY  
ASSESSMENT

ADAPTATION  
STRATEGIES

IMPLEMENTATION  
STRATEGIES





# Avoidance: Policy Changes

CONTEXT

VULNERABILITY  
ASSESSMENT

ADAPTATION  
STRATEGIES

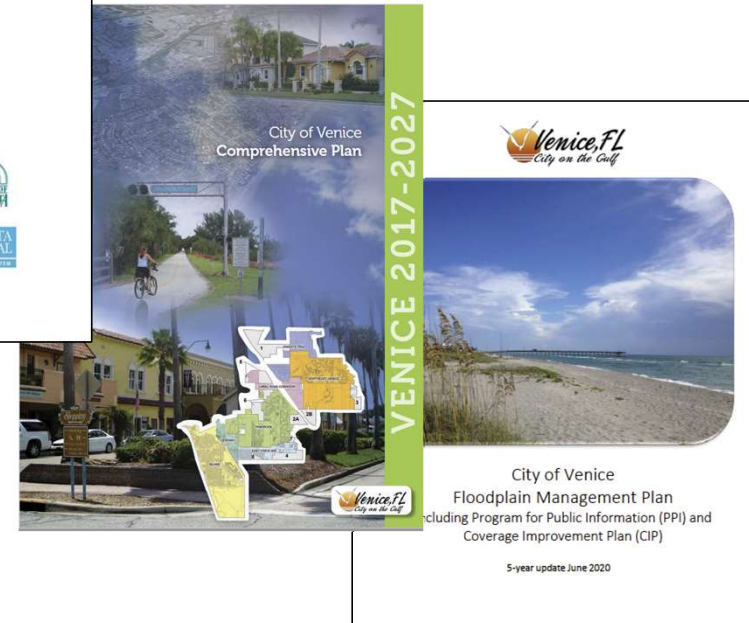
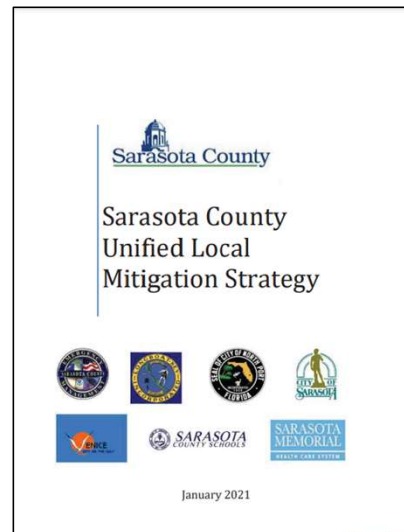
IMPLEMENTATION  
STRATEGIES

## Regulatory and Planning

- Local Mitigation Strategy
- Comprehensive Plan

## Infrastructure Upgrades

- Capital Improvements Plan
- Stormwater Management Plan
- Floodplain Management Plan



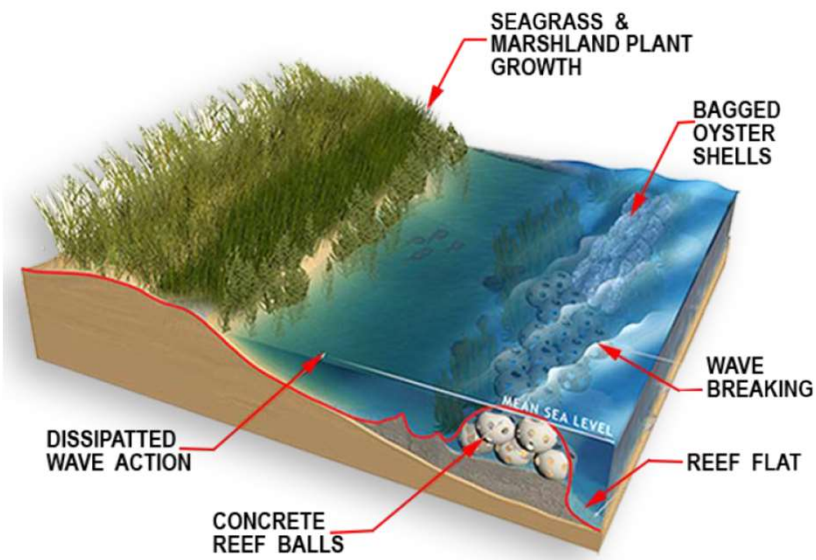
# Construct Living Shorelines

CONTEXT

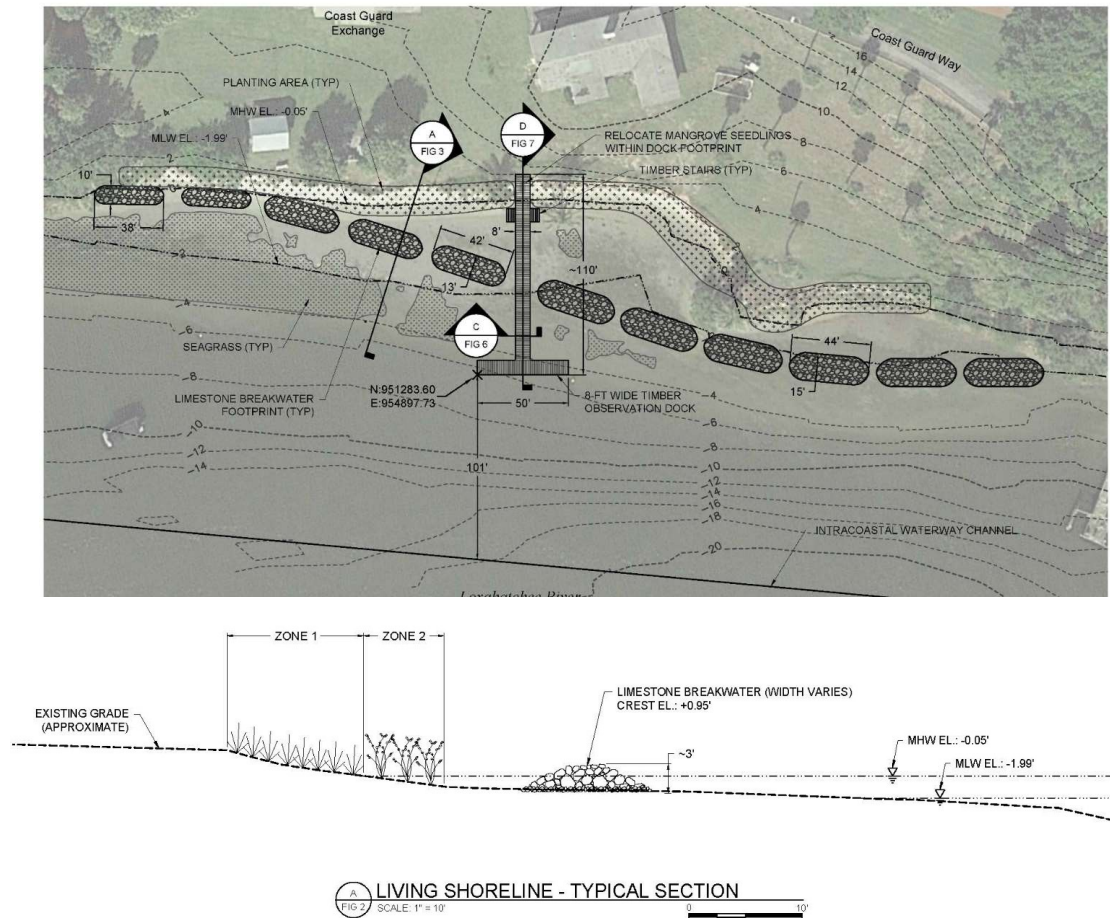
VULNERABILITY  
ASSESSMENT

ADAPTATION  
STRATEGIES

IMPLEMENTATION  
STRATEGIES



(Source: USACE EWN)

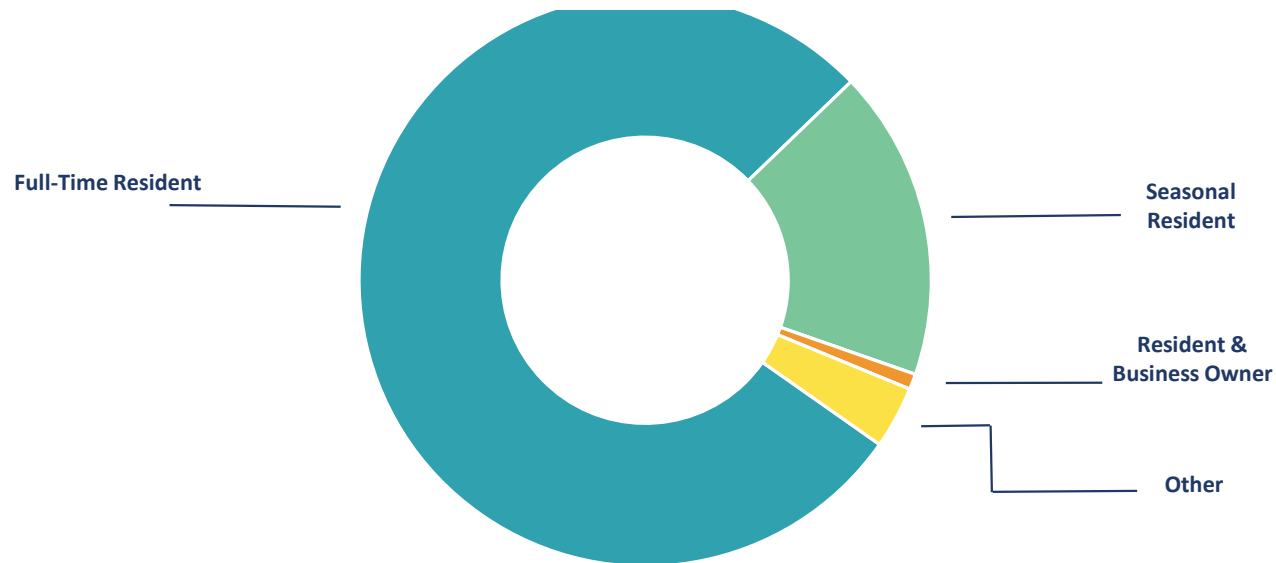


## Outreach Survey & Responses

---

- Live survey posted January 5<sup>th</sup>
- 8 questions
- 114 responses as of Feb. 11<sup>th</sup>

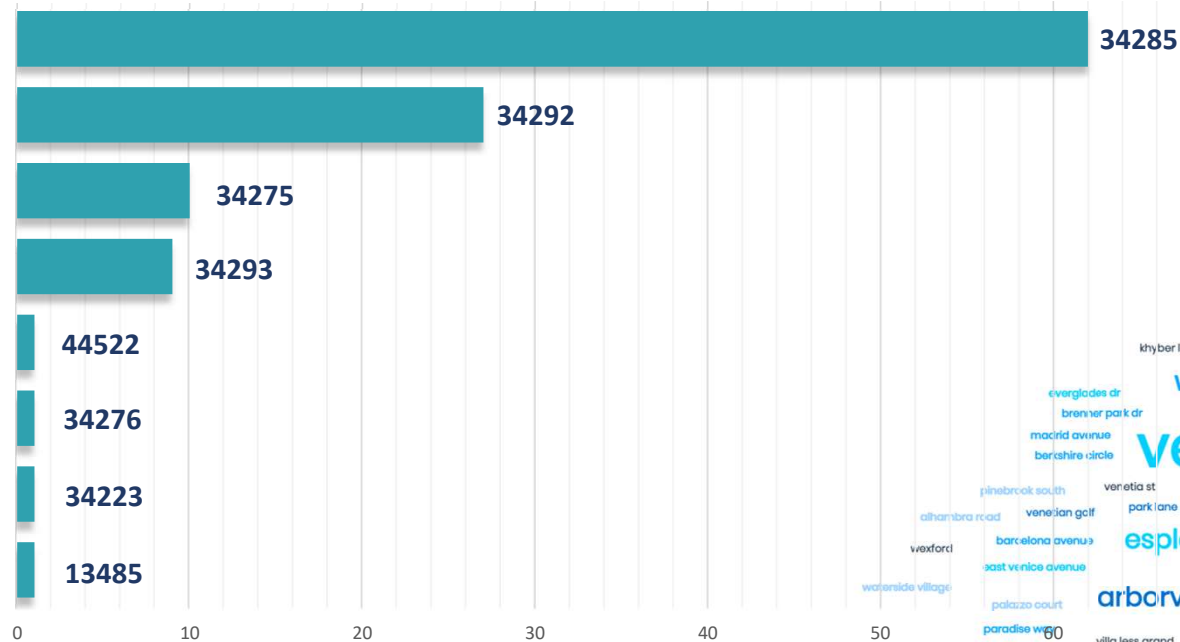
How are you affiliated with the City of Venice?





# Outreach Survey & Responses

What is your zip code?

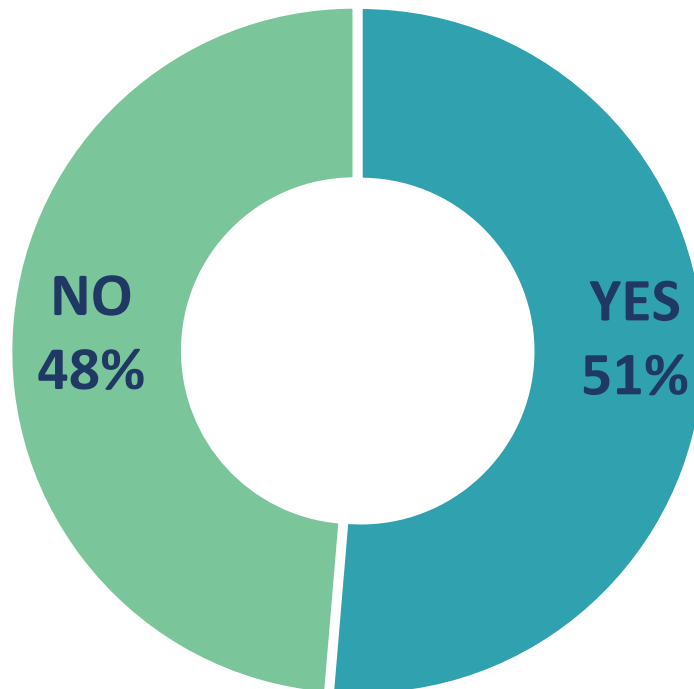


What neighborhood do you live?



# Outreach Survey & Responses

Do You Know What Adaptation Planning Is?



## Avoid

Identify future 'no-build areas' and use planning tools to prevent new development in areas at risk now or in future



## Accommodate

Continue to use the land but accommodate changes by building on piles, converting agriculture to fish farming or growing flood- or salt-tolerant crops



## Protect

Use hard structures (eg sea walls) or soft solutions (eg dunes and vegetation) to protect land from the sea. May be prohibitively expensive, especially in the long term



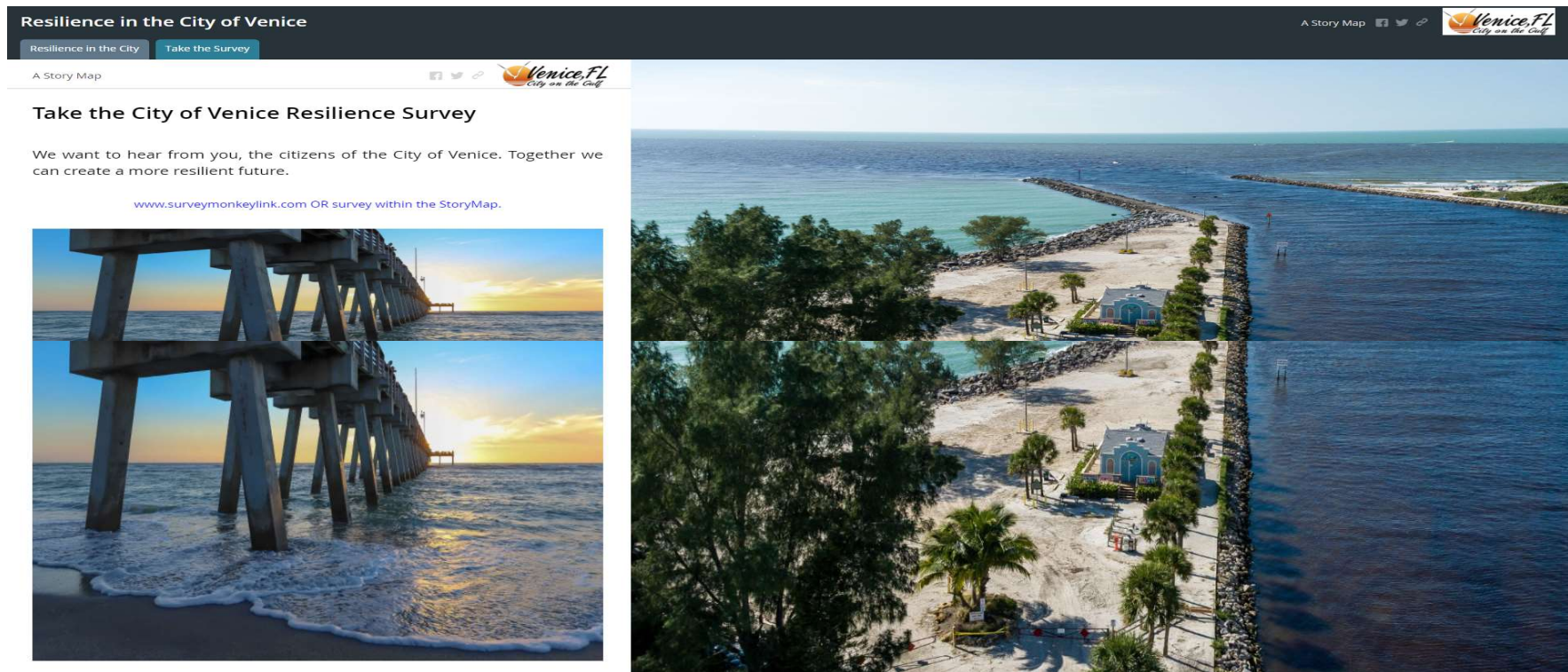
## Retreat

Withdraw, relocate or abandon assets that are at risk; ecosystems are allowed to retreat landward as sea levels rise



<https://coastadapt.com.au/sites/default/files/infographics/15-117-NCCARFINFOGRAPHICS-3-Updated.pdf>

# Public Outreach - Resilient Venice StoryMap Website

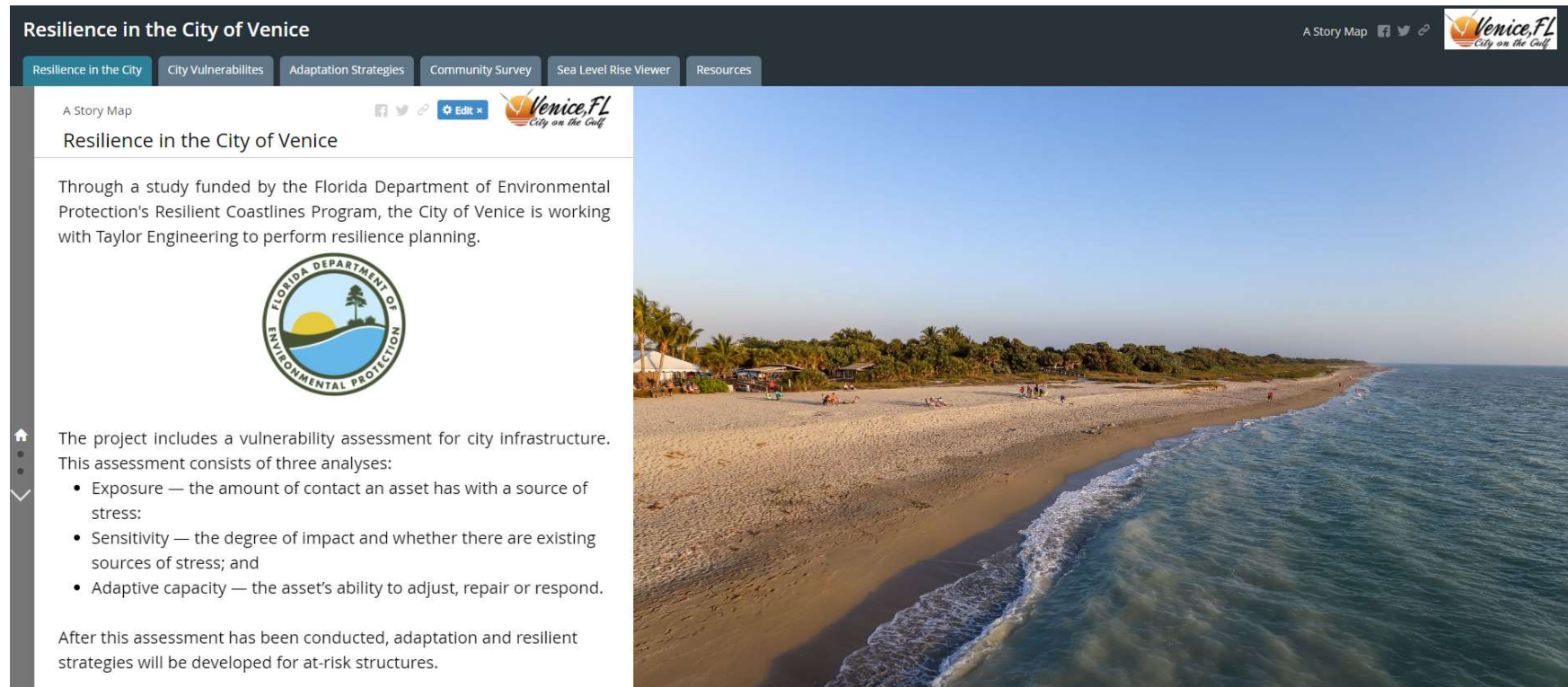


## Two Phase Rollout of StoryMap

- Phase I: Project Introduction & Survey Link – January 2021
- Phase II: Full Interactive StoryMap – March 2021



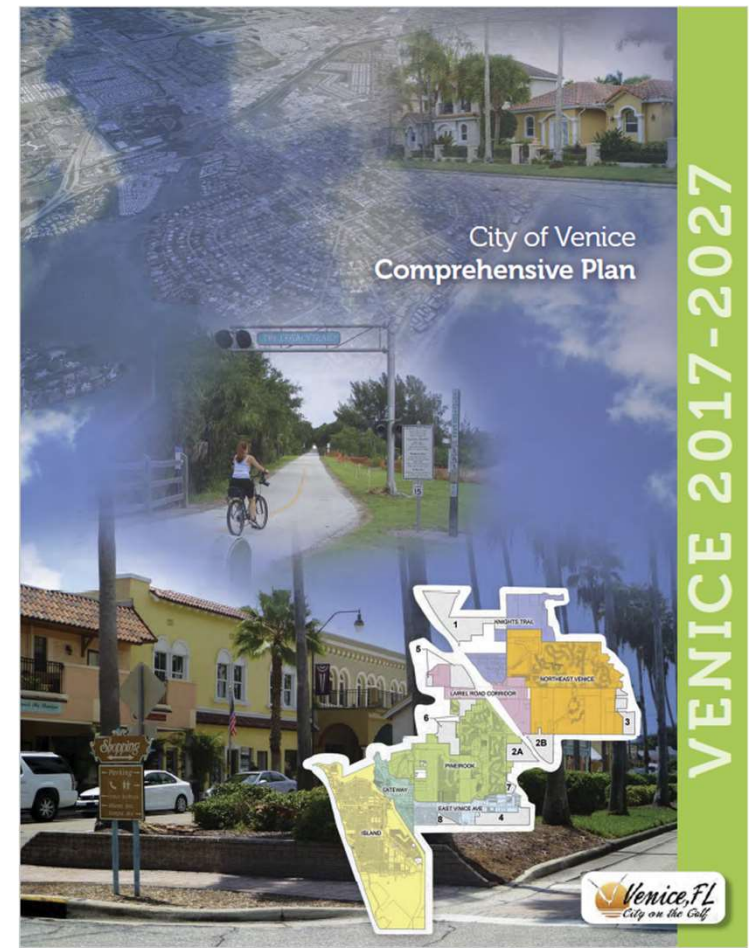
# Public Outreach - Resilient Venice StoryMap Website



- Project Overview: Adaptation and Resilience Defined
- Vulnerable Infrastructure: Overview and Highlights
- Adaptation Strategies: Outline Opportunities
- Sea Level Rise Viewer
- Survey Results: Citizen Priorities
- Resources: City, Regional, and National Resources

## Next Steps

- Identify and Prioritize Projects
  - Tarpon Center Drive Seawall
  - Stormwater System Upgrades
  - Water Treatment Plant Protection
- Utilities AWIA Risk & Resiliency Assessment (underway)
- Pursue Funding via Grant Opportunities
- Pursue Public-Private-NGO Partnerships
- Add Resilience to Comprehensive Plan
- Update Resilience Plan With New Data







THANK YOU

Questions?



[jphillips@taylorengeering.com](mailto:jphillips@taylorengeering.com)  
[aschedel@taylorengeering.com](mailto:aschedel@taylorengeering.com)