

1	Monument Sign
2	48" Keystone Wall Sign
3	Non-Illum. Poly. Tri-Stripes
4	Roost Wall Sign
5	7-11 Logo Wall Sign
6	Roost Wall Sign
7	7-11 Logo Wall Sign
8	Directional Sign
9	Directional Sign
10	Directional Sign
11	30" C.L Canopy Sign
12	Diesel Bulk Graphics
13	Car Wash Channel Letters
14	Car Wash Tri-Stripes Acm Panels
15	Car Wash Ent./Ext. ACM Panels
16	Car Wash Clearance Bars

harbinger  
sign of the future

5300 Shad Road, Jacksonville, FL 32257 • 904.268.4681  
2301 Ohio Dr, Plano, TX. 32257 • 972.905.9450

www.harbingersign.com

CLIENT: 7-Eleven #41309 (1044918)

ADDRESS: KNIGHTS AND LAUREL  
VENICE, FL 32569

CONTACT:DPM: RCC:

SALES ASSOC.: Rick Guarino

PROJECT MGR: Brian Hutto

DESIGNER: Brandon Winebarger/Mullins/F Mercado

SVE\_41309\_Q103760\_R22

F:\Customers\7 Eleven\Art\SVE\_41309\_Q103760\_R22

DATE	REV.	DESCRIPTION
09.10.20	R14	make changes in monument sign, with faces placements per email
10.07.20	R15	Make changes on gas price faces
10.13.20	R16	Update Art per changes request in files
10.22.20	R17	Update art per comments in email
11.03.20	R18	Update art per revised comments on art book
11.11.20	R19	Fix the striping on storefront
11.30.20	R20	Add new elevations to art
12.03.20	R21	Move RR sing per request
12.17.20	R22	Update Art per comments

ZONING: CMU

SQUARE FOOTAGE FORMULA

Code Information:

Formula: Total aggregate wall signs  
3 sf per Lin ft of bldg frontage

Allowed total:	236.4 sqft
Keystone Wall Sign:	14.6 sqft
Roost Halo W/S:	33.3 sqft
7-11 Logo Wall Sign:	27.4 sqft
Roost Halo W/S:	33.3 sqft
7-11 Logo Wall Sign:	27.3 sqft
Canopy Sign:	32.0 sqft
Proposed total:	167.9 sqft

Customer Notes:

Customer Approval: \_\_\_\_\_ DATE: \_\_\_\_\_

Scale: 1" = 1'-0"

Page: 1



Complies with  
UL 48  
CSA C21.2 No.207

THE STRUCTURAL DESIGN CONFORMS TO THE FOLLOWING CODES AND SPECIFICATIONS:  
THE FLORIDA BUILDING CODE SIXTH EDITION (2017), THE AMERICAN INSTITUTE OF STEEL  
CONSTRUCTION(MANUAL OF STEEL CONSTRUCTION, 9TH EDITION), THE AMERICAN WELDING  
SOCIETY(AWS D1.1-15), THE AMERICAN CONCRETE INSTITUTE BUILDING CODE REQUIREMENTS  
FOR STRUCTURAL CONCRETE(ACI 308-14), THE SPECIFICATION FOR ALUMINUM STRUCTURES  
BY THE ALUMINUM ASSOCIATION(CURRENT EDITION).

Site Plan

1" = 80'-0"

THIS DESIGN IS FOR THE SOLE PURPOSE OF ILLUSTRATION & CONCEPT DESIGN. THIS FILE IS NOT TO BE USED FOR PRODUCTION AND/OR FABRICATION. THIS DESIGN IS THE SOLE PROPERTY OF HARBINGER AND MAY NOT BE USED OR DUPLICATED IN ANY FORM WITHOUT THE EXPRESS WRITTEN PERMISSION OF HARBINGER.

DATE	REV.	DESCRIPTION
09.10.20	R14	make changes in monument sign, with faces placements per email
10.07.20	R15	Make changes on gas price faces
10.13.20	R16	Update Art per changes request in files
10.22.20	R17	Update art per comments in email
11.03.20	R18	Update art per revised comments on art book
11.11.20	R19	Fix the striping on storefront
11.30.20	R20	Add new elevations to art
12.03.20	R21	Move RR sing per request
12.17.20	R22	Update Art per comments

ZONING: CMU

SQUARE FOOTAGE FORMULA

Customer Notes:

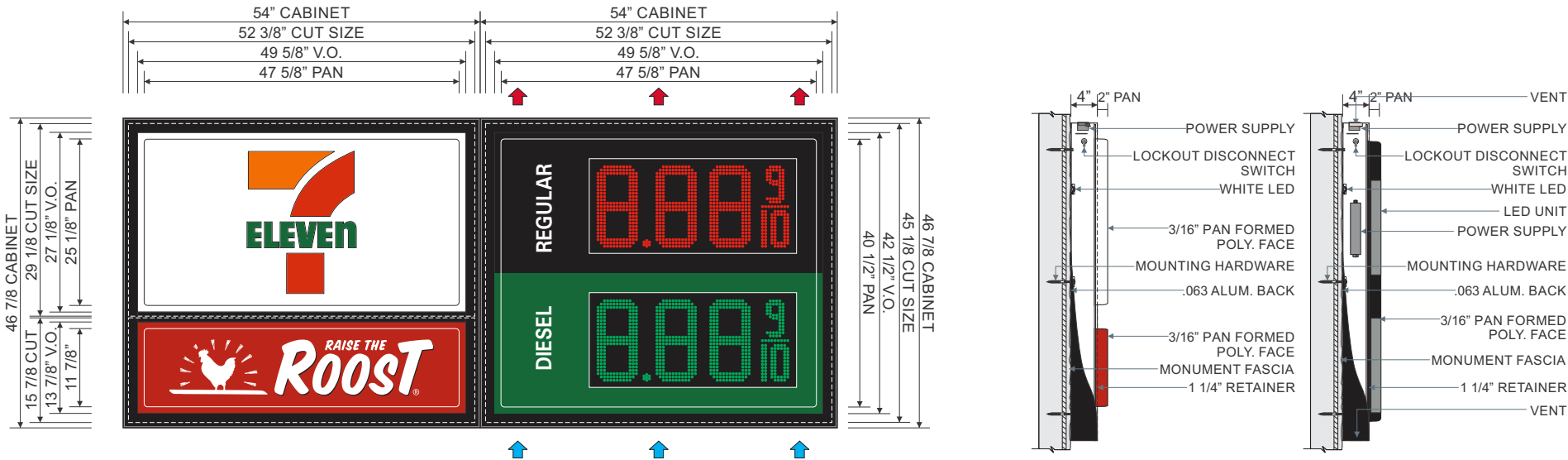
Customer Approval: \_\_\_\_\_ DATE: \_\_\_\_\_

Page: 2



Complies with  
UL 48  
CSA C22.2 No.207

THE STRUCTURAL DESIGN CONFORMS TO THE FOLLOWING CODES AND SPECIFICATIONS:  
THE FLORIDA BUILDING CODE SIXTH EDITION (2017), THE AMERICAN INSTITUTE OF STEEL  
CONSTRUCTION(MANUAL OF STEEL CONSTRUCTION, 9TH EDITION), THE AMERICAN WELDING  
SOCIETY(AWS D1.1-15), THE AMERICAN CONCRETE INSTITUTE BUILDING CODE REQUIREMENTS  
FOR STRUCTURAL CONCRETE(ACI 308-14), THE SPECIFICATION FOR ALUMINUM STRUCTURES  
BY THE ALUMINUM ASSOCIATION(CURRENT EDITION).



TWO (2) **NON STANDARD** S/F INTERNALLY ILLUMINATED "MAIN ID" SIGN CABINET.  
4" DEEP BRAKE FORM ALUM. CABINET W/ 1 1/4" RETAINERS & 1 1/2" DIVIDER BAR TO BE PAINTED **TRICORN BLACK SW 6258**.  
CABINET TO BE INTERNALLY ILLUMINATED W/ WHITE LEDS.

**7-ELEVEN FACE SPECS:** 3/16" THICK PAN FORMED WHITE POLYCARBONATE FACES W/ TRANSLUCENT VINYL GRAPHICS APPLIED FIRST SURFACE. FACES TO BE BACK SPRAYED W/ OPAQUE PAINT (**GRAY, & BLACK**)  
APPLIED SECOND SURFACE, ILLUMINATING ONLY THE 7-11 LOGO, OPAQUING THE BACKGROUND.  
**VINYL SPECS:** **3M 3630-44 ORANGE, 3M 3630-33 RED, 3M 3630-26 GREEN**

**RAISE THE ROOST FACE SPECS:** 3/16" THICK PAN FORMED CLEAR POLYCARBONATE FACES BACK SPRAY RTR RED W/ TRANSLUCENT VINYL APPLIED 2ND SURFACE. FACES TO BE BACK SPRAYED W/ OPAQUE PAINT (**GRAY, & BLACK**)  
APPLIED SECOND SURFACE, ILLUMINATING ONLY THE ROOST LOGO, OPAQUING THE BACKGROUND.  
**VINYL SPECS:** **3M 3630-33 RED, 3M WHITE, 3M BLACK**

TWO (2) **NON STANDARD** S/F "DOUBLE-PRODUCT" DIESEL INTERNALLY ILLUMINATED SIGN CABINET W/ RED & GREEN LED DIGITS. CABINET TO BE INTERNALLY ILLUMINATED W/ WHITE LEDS.  
3/16" THICK PAN FORMED CLEAR POLY. FACES BACK SPRAYED **TRICORN BLACK** THEN **PMS WHITE** W/ **3M 3630-26 GREEN** TRANSLUCENT VINYL APPLIED SECOND SURFACE. FACES TO BE BACK SPRAYED W/ OPAQUE PAINT (**GRAY, & BLACK**)  
APPLIED SECOND SURFACE, ILLUMINATING ONLY THE GAS GRADES & DIGITS BOARDS, OPAQUING THE BACKGROUND.  
4" DEEP BRAKE FORM ALUM. CABINET W/ 1 1/4" RETAINERS TO BE PAINTED **TRICORN BLACK SW 6258**.

PROVIDE CUSTOMER W/ 12" DIGIT **RED** & **GREEN** LED MODULES.

**7-ELEVEN VINYL SPECS:** **3M 3630-26 GREEN, 3M 7725-12 BLACK**  
**7-ELEVEN PAINT SPECS:** **PMS 485 RED & PMS WHITE**

Front & Side View - **NON STANDARD** Main-ID Cabinet & **NON STANDARD** Double Product Gas Price Cabinet - **Sign 1**  
1/2" = 1'-0"

Display Square Footage(Cabinets): **35.2**

www.harbingersign.com

CLIENT: 7-Eleven #41309 (1044918)

ADDRESS: KNIGHTS AND LAUREL  
VENICE, FL 32569

CONTACT:DPM: RCC:

SALES ASSOC.: Rick Guarino

PROJECT MGR: Brian Hutto

DESIGNER: Brandon Winebarger/Mullins/F Mercado

SVE\_41309\_Q103760\_R22

F:\Customers\7 Eleven\Art\SVE\_41309\_Q103760\_R22

DATE	REV.	DESCRIPTION
09.10.20	R14	make changes in monument sign, with faces placements per email
10.07.20	R15	Make changes on gas price faces
10.13.20	R16	Update Art per changes request in files
10.22.20	R17	Update art per comments in email
11.03.20	R18	Update art per revised comments on art book
11.11.20	R19	Fix the striping on storefront
11.30.20	R20	Add new elevations to art
12.03.20	R21	Move RR sing per request
12.17.20	R22	Update Art per comments

ZONING: CMU

SQUARE FOOTAGE FORMULA

Customer Notes:

Customer Approval:\_\_\_\_\_DATE

Page: 3



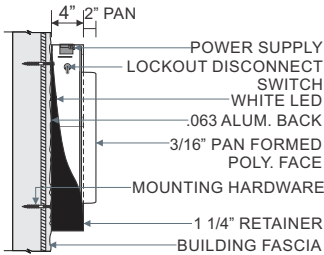
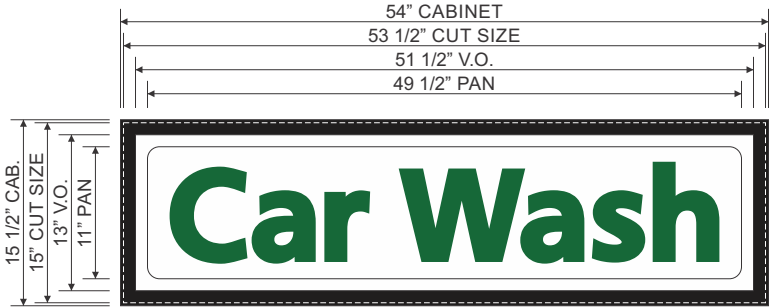
Complies with  
UL 48  
CSA C22.2 No.207

THE STRUCTURAL DESIGN CONFORMS TO THE FOLLOWING CODES AND SPECIFICATIONS:  
THE FLORIDA BUILDING CODE SIXTH EDITION (2017), THE AMERICAN INSTITUTE OF STEEL  
CONSTRUCTION(MANUAL OF STEEL CONSTRUCTION, 9TH EDITION), THE AMERICAN WELDING  
SOCIETY(AWS D1.1-15), THE AMERICAN CONCRETE INSTITUTE BUILDING CODE REQUIREMENTS  
FOR STRUCTURAL CONCRETE(ACI 318-14), THE SPECIFICATION FOR ALUMINUM STRUCTURES  
BY THE ALUMINUM ASSOCIATION(CURRENT EDITION).

NOTE: LETTERS TO ONLY BE ILLUMINATED, BACKGROUND TO BE OPAQUE

NIGHT VIEW

Car Wash



TWO (2) **NON STANDARD** S/F INTERNALLY ILLUMINATED "CAR WASH" SIGN CABINET.  
3/16" THICK PAN FORMED WHITE POLYCARBONATE FACES W/ TRANSLUCENT VINYL  
GRAPHICS APPLIED FIRST SURFACE. FACES TO BE BACK SPRAYED W/ OPAQUE PAINT (**GRAY, & BLACK**)  
APPLIED SECOND SURFACE, ILLUMINATING ONLY THE DIESEL BULK DEF, OPAQUING THE BACKGROUND.  
4" DEEP BRAKE FORM ALUM. CABINET W/ 1 1/4" RETAINERS TO BE PAINTED **TRICORN BLACK SW 6258**.  
CABINET TO BE INTERNALLY ILLUMINATED W/ WHITE LEDS.

VINYL SPECS: 3M 3630-26 GREEN  
PAINT SPECS: TRICORN BLACK SW 6258

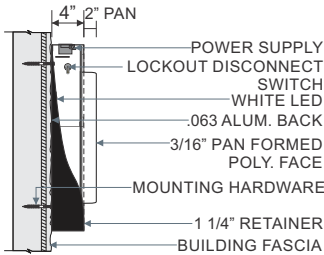
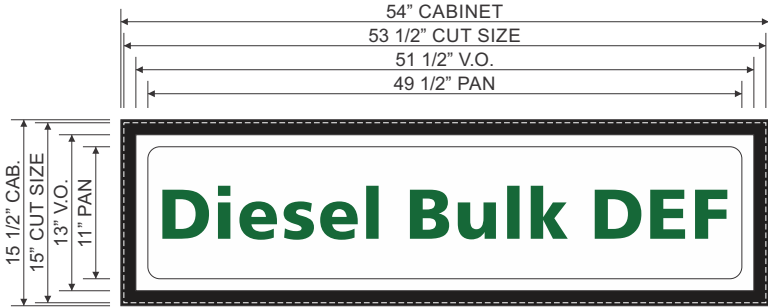
Front & Side View - **Non-Standard** Car Wash Cabinet - **Sign 1**

3/4" = 1'-0"

Display Square Footage(Cabinet): **5.8**

NIGHT VIEW

Diesel Bulk DEF



TWO (2) **NON STANDARD** S/F INTERNALLY ILLUMINATED "DIESEL BULK DEF" SIGN CABINET.  
3/16" THICK PAN FORMED WHITE POLYCARBONATE FACES W/ TRANSLUCENT VINYL  
GRAPHICS APPLIED FIRST SURFACE. FACES TO BE BACK SPRAYED W/ OPAQUE PAINT (**GRAY, & BLACK**)  
APPLIED SECOND SURFACE, ILLUMINATING ONLY THE DIESEL BULK DEF, OPAQUING THE BACKGROUND.  
4" DEEP BRAKE FORM ALUM. CABINET W/ 1 1/4" RETAINERS TO BE PAINTED **TRICORN BLACK SW 6258**.  
CABINET TO BE INTERNALLY ILLUMINATED W/ WHITE LEDS.

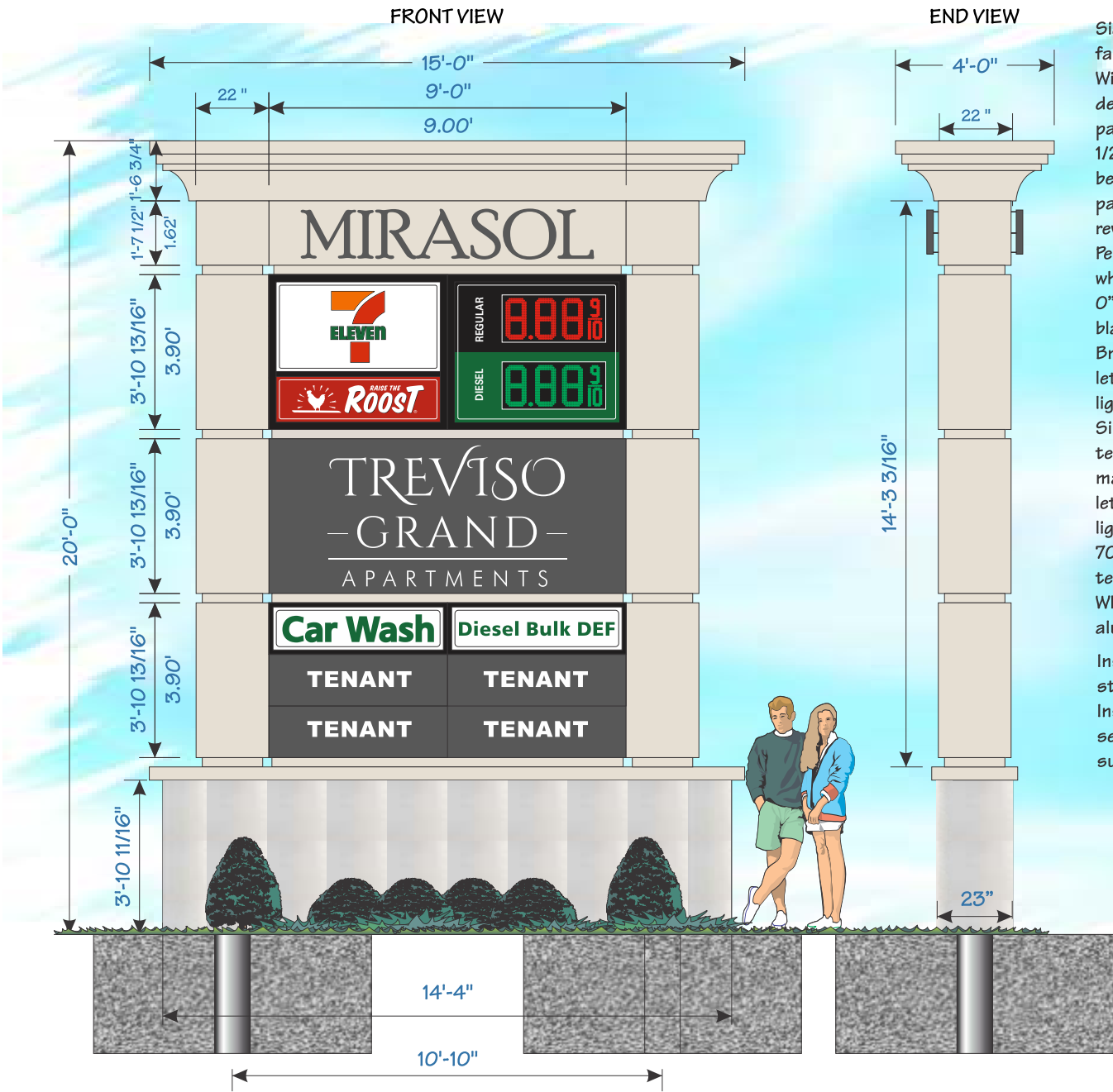
VINYL SPECS: 3M 3630-26 GREEN  
PAINT SPECS: TRICORN BLACK SW 6258

Front & Side View - **Non-Standard** Diesel Bulk DEF Cabinet - **Sign 1**

3/4" = 1'-0"

Display Square Footage(Cabinet): **5.8**

NOTE: 7-ELEVEN SIGNS PLACEMENT TO BE REVIEW FOR APPROVAL



Sign: Top roof section 1' 6 3/4" high by 15' 0" wide by 4' 0" deep fabricated aluminum with textured painted finish to match Sherwin Williams SW 7042 Shoji White. 14' 3 3/16" high by 22" wide by 22" deep pole covers & reveals to be fabricated aluminum with textured painted finish to match Sherwin Williams SW 7042 Shoji White. 1' 7 1/2" high by 9' 0" wide by 22" deep double faced main I.D. section to be fabricated aluminum cabinet with aluminum faces with textured painted background to match SW 7042 Shoji White with 2" deep reverse channel painted to match Sherwin Williams SW 7674 Peppercorn "MIRASOL" lighted letters be internally illuminated with white LED lighting creating a halo effect. (2) 3' 10 13/16" high by 9' 0" wide by 25" deep top and bottom multi tenant sections to have blank aluminum faces painted satin to match SW 7674 Peppercorn Bronze set up for future tenants with routed 3/4" thick white push lettering. Cabinet it to be internally illuminated with white LED lighting and painted textured to match Sherwin Williams SW 7021 Simple White. 3' 10 13/16" high by 9' 0" wide by 25" deep middle tenant section to have routed aluminum faces painted satin to match SW 7674 Peppercorn with routed 3/4" thick white push lettering. Cabinet it to be internally illuminated with white LED lighting and painted and textured to match Sherwin Williams SW 7042 Shoji White. 4" high by 15' 0" wide fabricated base cap to textured painted finish to match Sherwin Williams SW 7042 Shoji White. Base 3' 10 11/16" high by 14' 4" wide by 23" deep fabricated aluminum frame and covered with Durock® or equivalent for tile

Installation: Excavate footing, set up rebar and steel support structure and pour concrete footing. Install base and base cap, Install tenant cabinets with reveals the both pole covers. Set roof section in place. Connect all to existing 120 volt 20 amp power supplied by others.

Sherwin Williams paint colors

SW 7674 Peppercorn Interior / Exterior Locator Number: 236-C7	SW 7042 Shoji White Interior / Exterior Locator Number: 254-C4
--	---

- Spread footer option: (2x) 7'-0" sq x 3'-0" deep w/ rebar  
- Augered footer option: (2x) 36" dia x 9'-3" deep  
- Main post option: (2x) 10" SCH 40 steel

harbinger

sign of the future

5300 Shad Road, Jacksonville, FL 32257 • 904.268.4681  
2301 Ohio Dr, Plano, TX. 32257 • 972.905.9450

www.harbingersign.com

CLIENT: 7-Eleven #41309 (1044918)

ADDRESS: KNIGHTS AND LAUREL  
VENICE, FL 32569

CONTACT:DPM: RCC:

SALES ASSOC.: Rick Guarino

PROJECT MGR: Brian Hutto

DESIGNER: Brandon Winebarger/Mullins/F Mercado

SVE\_41309\_Q103760\_R22

F:\Customers\7 Eleven\Art\SVE\_41309\_Q103760\_R22

DATE	REV.	DESCRIPTION
09.10.20	R14	make changes in monument sign, with faces placements per email
10.07.20	R15	Make changes on gas price faces
10.13.20	R16	Update Art per changes request in files
10.22.20	R17	Update art per comments in email
11.03.20	R18	Update art per revised comments on art book
11.11.20	R19	Fix the striping on storefront
11.30.20	R20	Add new elevations to art
12.03.20	R21	Move RR sing per request
12.17.20	R22	Update Art per comments

ZONING: CMU

SQUARE FOOTAGE FORMULA

Code Information:

**Formula:** Monument signs having a copy area totaling 240 square feet are approved by right at each drive entry to the Property, with neither side exceeding 200 square feet of copy area. Sign structures are approved by right up to 20' in height and no greater than 15' in width.

Allowed Copy:	200.0 sqft
Proposed Copy:	126.0 sqft
7-Eleven Cabs:	47.2 sqft

Customer Notes:

Customer Approval: \_\_\_\_\_ DATE: \_\_\_\_\_

Page: 4

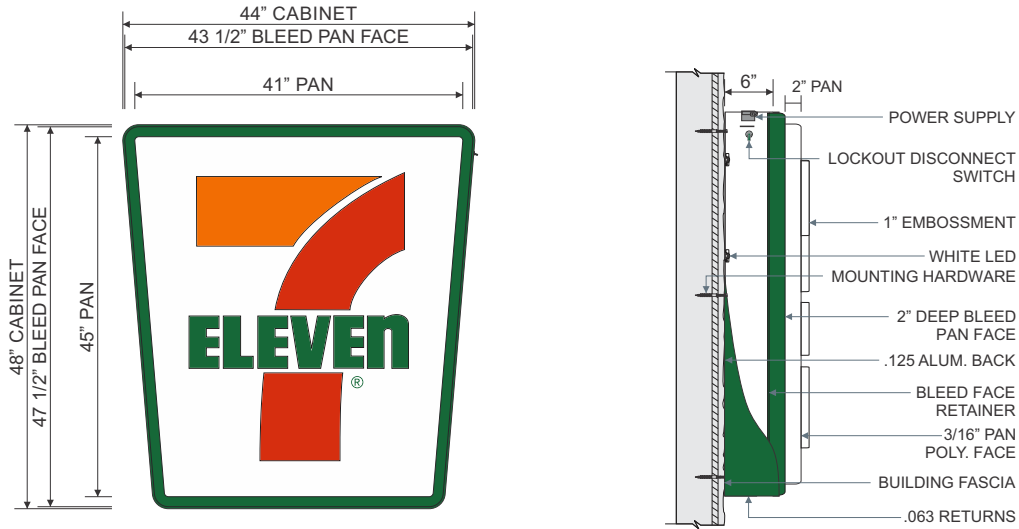


THE STRUCTURAL DESIGN CONFORMS TO THE FOLLOWING CODES AND SPECIFICATIONS:  
THE FLORIDA BUILDING CODE SIXTH EDITION (2017), THE AMERICAN INSTITUTE OF STEEL  
CONSTRUCTION(MANUAL OF STEEL CONSTRUCTION, 9TH EDITION), THE AMERICAN WELDING  
SOCIETY(AWS D1.1-15), THE AMERICAN CONCRETE INSTITUTE BUILDING CODE REQUIREMENTS  
FOR STRUCTURAL CONCRETE(ACI 318-14), THE SPECIFICATION FOR ALUMINUM STRUCTURES  
BY THE ALUMINUM ASSOCIATION(CURRENT EDITION).

Face View & Side Detail - NON STANDARD Monument Sign - Sign 1

3/8" = 1'-0"

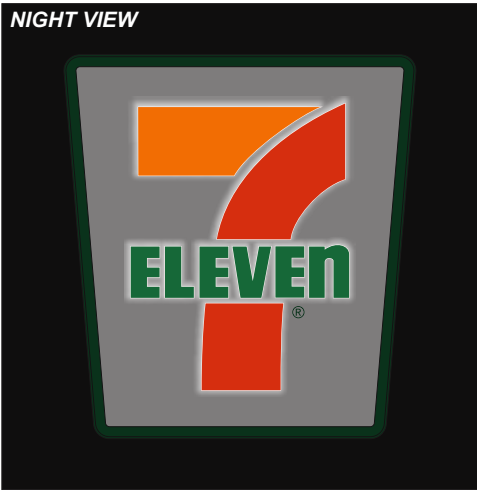




ONE (1) **48" x 44" "KEYSTONE"** INTERNALLY ILLUMINATED S/F WALL SIGN CABINET.  
3/16" THICK BLEED PAN FACE & EMBOSSED WHITE POLY. FACE W/ TRANSLUCENT VINYL GRAPHICS APPLIED FIRST SURFACE. FACES TO BE BACK SPRAYED W/ OPAQUE PAINT (**GRAY, & BLACK**) APPLIED SECOND SURFACE, ILLUMINATING ONLY THE 7-11 LOGO, OPAQUING THE BACKGROUND.  
6" DEEP ALUM. CABINET W/ ALUM. BLEED FACE RETAINERS & SIDES TO BE PAINTED **349C GREEN**.  
CABINET TO BE INTERNALLY ILLUMINATED W/ WHITE LEDS.

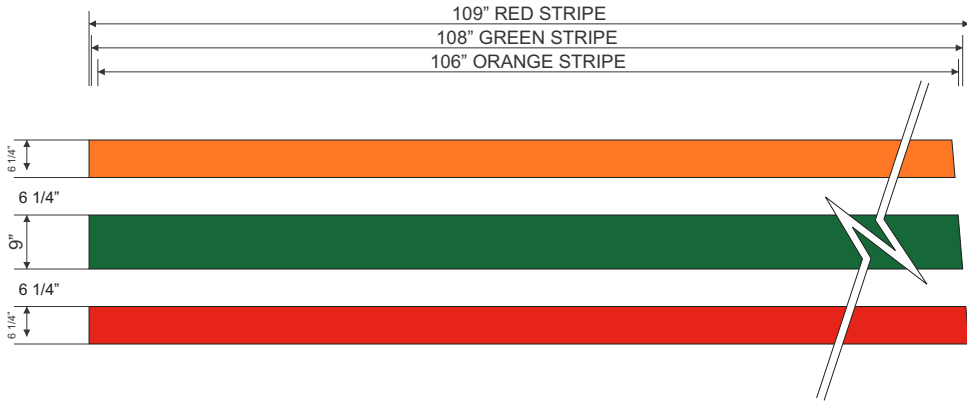
**VINYL SPECS: 3M 3630-44 ORANGE, 3M 3630-33 RED, 3M 3630-26 GREEN**  
**PAINT SPECS: PMS 349C GREEN**

**NOTE: "LOGO EMBOSSMENT DEPTH PROPORTIONAL TO HEIGHT"**  
**NOTE: HARBINGER MAY REQUIRED TO SUPPLY ALUM. TUBE FRAME SUPPORT**  
**NOTE: LOGO TO ONLY BE ILLUMINATED, BACKGROUND TO BE OPAQUE**

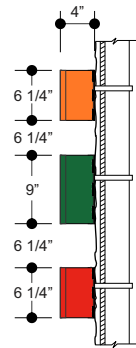
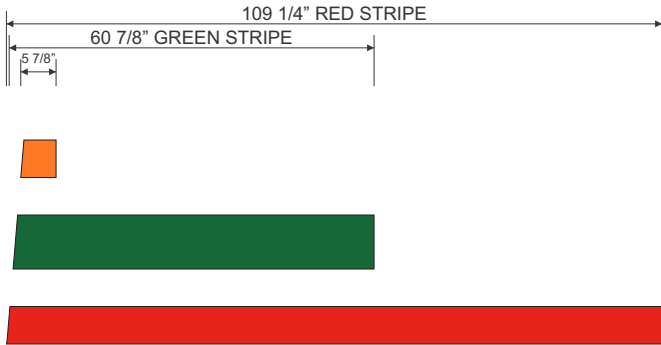


Front & Side View - **48" x 44" Keystone** Wall Sign Cabinet - **Sign 2**

1/2" = 1'-0" Display Square Footage(Cabinet): **14.7**



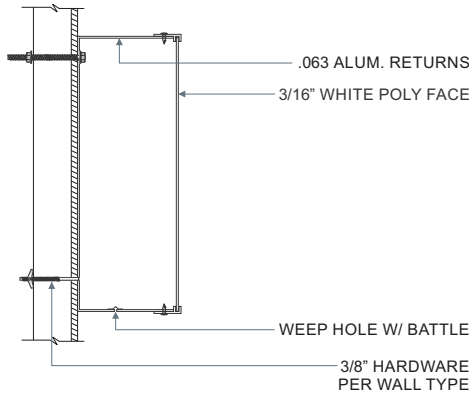
BREAK  
FOR  
KEYSTONE  
LOGO



ONE (1) SET OF 6 1/4" - 9" TALL **POLYCARBONATE TRI-STRIPES NON-ILLUMINATED** CHANNEL FORMS.  
3/16" THICK WHITE POLYCARBONATE FACES W/ TRANSLUCENT VINYL GRAPHICS APPLIED FIRST SURFACE.  
4" DEEP .063 ALUMINUM RETURNS & "F" TYPE RETAINERS PAINTED TO MATCH FACES.

	<b>PANTONE 349C GREEN</b> (VINYL 3M 3630-26)
	<b>PANTONE O21C ORANGE</b> (VINYL 3M 3630-44)
	<b>PANTONE 485C RED</b> (VINYL 3M 3630-33)

**NOTE: NO JEWELITE ATTACHED TO FORMS.**  
**NOTE: TOP STRIPE TO BE (2) TWO SEPARATE CABINETS PER BUILDING ELEVATION LAYOUT.**



TYPICAL SECTION: NOT TO SCALE

Front & Side View - Polycarbonate Tri-Stripe Channel Forms - **Signs 3**

3/8" = 1'-0"

**harbinger**  
sign of the future

5300 Shad Road, Jacksonville, FL 32257 • 904.268.4681  
2301 Ohio Dr, Plano, TX. 32257 • 972.905.9450

[www.harbingersign.com](http://www.harbingersign.com)

CLIENT: 7-Eleven #41309 (1044918)

ADDRESS: KNIGHTS AND LAUREL  
VENICE, FL 32569

CONTACT:DPM: RCC:

SALES ASSOC.: Rick Guarino

PROJECT MGR: Brian Hutto

DESIGNER: Brandon Winebarger/Mullins/F Mercado

**SVE\_41309\_Q103760\_R22**

F:\Customers\7 Eleven\Art\SVE\_41309\_Q103760\_R22

DATE	REV.	DESCRIPTION
09.10.20	R14	make changes in monument sign, with faces placements per email
10.07.20	R15	Make changes on gas price faces
10.13.20	R16	Update Art per changes request in files
10.22.20	R17	Update art per comments in email
11.03.20	R18	Update art per revised comments on art book
11.11.20	R19	Fix the striping on storefront
11.30.20	R20	Add new elevations to art
12.03.20	R21	Move RR sing per request
12.17.20	R22	Update Art per comments

ZONING: CMU

**SQUARE FOOTAGE FORMULA**

Customer Notes:

Customer Approval: \_\_\_\_\_ DATE \_\_\_\_\_

Page: 5



Complies with  
UL 48  
CSA C22.2 No.207

THE STRUCTURAL DESIGN CONFORMS TO THE FOLLOWING CODES AND SPECIFICATIONS:  
THE FLORIDA BUILDING CODE SIXTH EDITION (2017), THE AMERICAN INSTITUTE OF STEEL  
CONSTRUCTION(MANUAL OF STEEL CONSTRUCTION, 9TH EDITION), THE AMERICAN WELDING  
SOCIETY(AWS D1.1-15), THE AMERICAN CONCRETE INSTITUTE BUILDING CODE REQUIREMENTS  
FOR STRUCTURAL CONCRETE(ACI 308-14), THE SPECIFICATION FOR ALUMINUM STRUCTURES  
BY THE ALUMINUM ASSOCIATION(CURRENT EDITION).

www.harbingersign.com

CLIENT: 7-Eleven #41309 (1044918)

ADDRESS: KNIGHTS AND LAUREL  
VENICE, FL 32569

CONTACT:DPM: RCC:

SALES ASSOC.: Rick Guarino

PROJECT MGR: Brian Hutto

DESIGNER: Brandon Winebarger/Mullins/F Mercado

SVE\_41309\_Q103760\_R22

F:\Customers\7 Eleven\Art\SVE\_41309\_Q103760\_R22

DATE	REV.	DESCRIPTION
09.10.20	R14	make changes in monument sign, with faces placements per email
10.07.20	R15	Make changes on gas price faces
10.13.20	R16	Update Art per changes request in files
10.22.20	R17	Update art per comments in email
11.03.20	R18	Update art per revised comments on art book
11.11.20	R19	Fix the striping on storefront
11.30.20	R20	Add new elevations to art
12.03.20	R21	Move RR sing per request
12.17.20	R22	Update Art per comments

ZONING: CMU

SQUARE FOOTAGE FORMULA

Customer Notes:

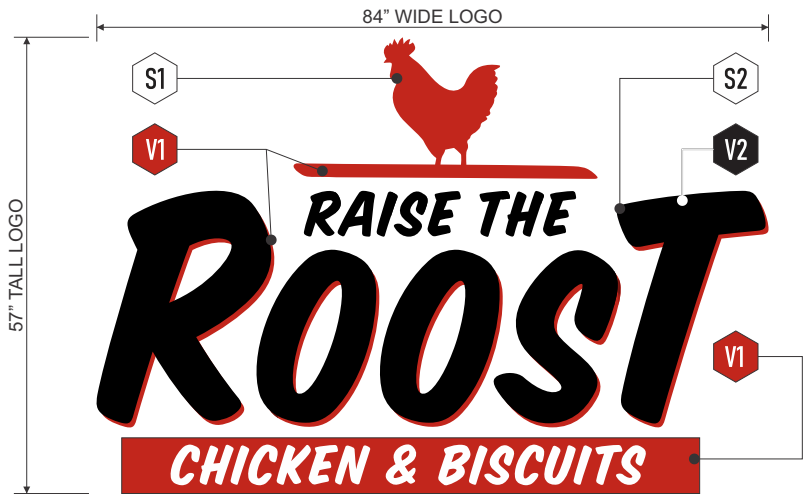
Customer Approval:\_\_\_\_DATE

Page: 6

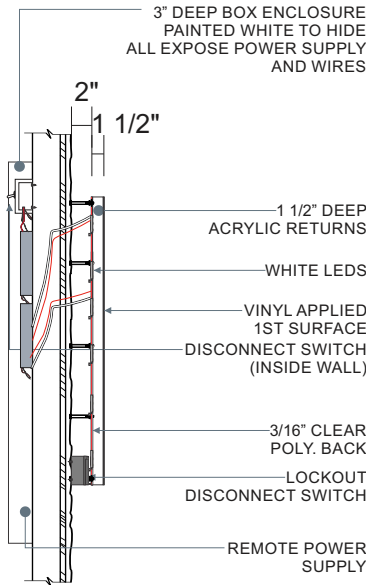


Complies with  
UL 48  
CSA C22.2 No.207

THE STRUCTURAL DESIGN CONFORMS TO THE FOLLOWING CODES AND SPECIFICATIONS:  
THE FLORIDA BUILDING CODE SIXTH EDITION (2017), THE AMERICAN INSTITUTE OF STEEL  
CONSTRUCTION(MANUAL OF STEEL CONSTRUCTION, 9TH EDITION), THE AMERICAN WELDING  
SOCIETY(AIWS D1.1-15), THE AMERICAN CONCRETE INSTITUTE BUILDING CODE REQUIREMENTS  
FOR STRUCTURAL CONCRETE(ACI 308-14), THE SPECIFICATION FOR ALUMINUM STRUCTURES  
BY THE ALUMINUM ASSOCIATION(CURRENT EDITION).



NIGHT VIEW



SIDE DETAIL: NTS

LEGEND LIST

S1 — 1 1/2" DEEP CLEAR ACRYLIC RETURNS

S2 — BACK WITH 3/16" THICK CLEAR POLY.

V1 — 3M 3630-33 RED

V2 — 3M BLACK

ONE (1) FACE & HALO LIT “ROOST” WALL SIGN. 1 1/2" THICK CLEAR ACRYLIC LETTERS/LOGO CAVITY ROUTED OUT FROM BACK. BACK WITH FLAT 3/16" THICK CLEAR POLY. SHEET. VINYL APPLIED FIRST SURFACE OF LOGO PER SPECS.

NOTE: RETURNS OF LETTER/LOGO TO BE OPAQUE  
NOTE: CHICKEN & BISCUITS SPECS TO BE DETERMINED

Front & Side View - Roost Face/Halo S/F Wall Sign - Sign 4

1/2" = 1'-0"

Display Square Footage (Logo): 33.3

DATE	REV.	DESCRIPTION
09.10.20	R14	make changes in monument sign, with faces placements per email
10.07.20	R15	Make changes on gas price faces
10.13.20	R16	Update Art per changes request in files
10.22.20	R17	Update art per comments in email
11.03.20	R18	Update art per revised comments on art book
11.11.20	R19	Fix the striping on storefront
11.30.20	R20	Add new elevations to art
12.03.20	R21	Move RR sing per request
12.17.20	R22	Update Art per comments

ZONING: CMU

SQUARE FOOTAGE FORMULA

Code Information:

Formula: Total aggregate wall signs  
3 sf per Lin ft of bldg frontage

Allowed total:	236.4 sqft
Keystone Wall Sign:	14.6 sqft
Roost Halo W/S:	33.3 sqft
7-11 Logo Wall Sign:	27.4 sqft
Roost Halo W/S:	33.3 sqft
7-11 Logo Wall Sign:	27.3 sqft
Canopy Sign:	32.0 sqft
Proposed total:	167.9 sqft

Customer Notes:

Customer Approval: \_\_\_\_\_ DATE \_\_\_\_\_

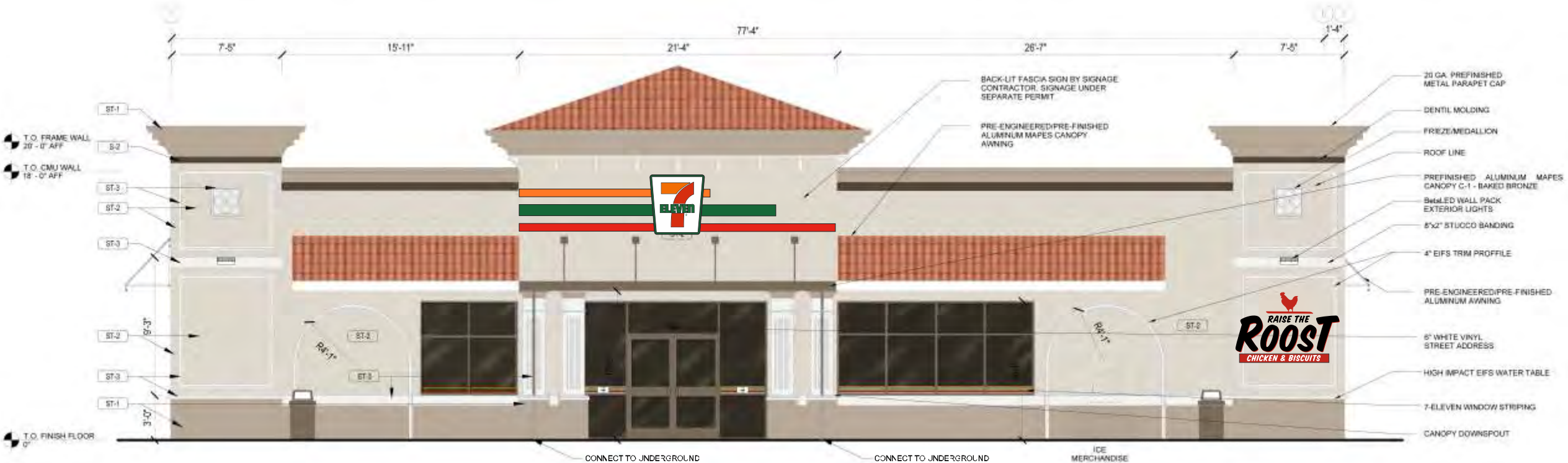
Page: 7



Complies with  
UL 48  
CSA C21.2 No.207

THE STRUCTURAL DESIGN CONFORMS TO THE FOLLOWING CODES AND SPECIFICATIONS:  
THE FLORIDA BUILDING CODE SIXTH EDITION (2017), THE AMERICAN INSTITUTE OF STEEL  
CONSTRUCTION(MANUAL OF STEEL CONSTRUCTION, 9TH EDITION), THE AMERICAN WELDING  
SOCIETY(AWS D1.1-15), THE AMERICAN CONCRETE INSTITUTE BUILDING CODE REQUIREMENTS  
FOR STRUCTURAL CONCRETE(ACI 308-14), THE SPECIFICATION FOR ALUMINUM STRUCTURES  
BY THE ALUMINUM ASSOCIATION(CURRENT EDITION).

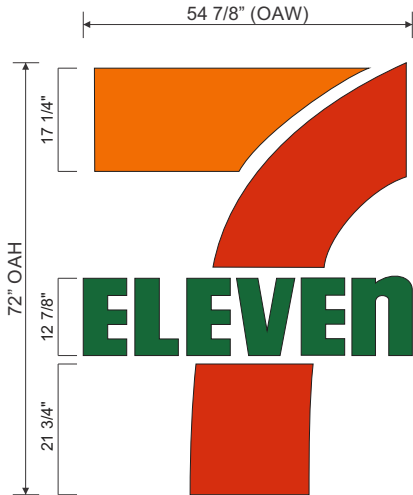
NOTE: ELEVATIONS AND ILLUSTRATED SIGNAGE REQUIRES CORPORATE 7-ELEVEN APPROVAL PRIOR TO PRODUCTION  
NOTE: TRI-STRIPES IS CONSIDERED AS WALL ARCHITECTURAL DESIGN OF THE BUILDING  
NOTE: CUSTOMER TO CONFIRM PLACEMENT OF ROOST WALL SIGNAGE



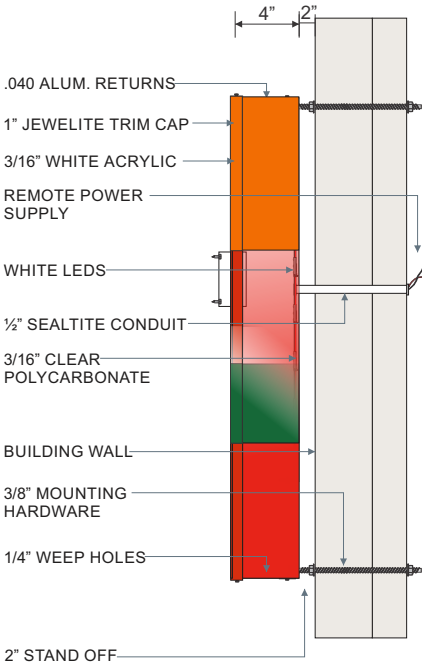
Proposed South Elevation - Signs 2, 3, & 4

1/8"= 1'-0"

DATE	REV.	DESCRIPTION
09.10.20	R14	make changes in monument sign, with faces placements per email
10.07.20	R15	Make changes on gas price faces
10.13.20	R16	Update Art per changes request in files
10.22.20	R17	Update art per comments in email
11.03.20	R18	Update art per revised comments on art book
11.11.20	R19	Fix the striping on storefront
11.30.20	R20	Add new elevations to art
12.03.20	R21	Move RR sing per request
12.17.20	R22	Update Art per comments



NIGHT VIEW



SIDE DETAIL: NTS

ONE (1) 72" TALL DUAL ILLUMINATED REMOTE MOUNTED LOGO. 4" DEEP ALUMINUM RETURNS. 3/16" THICK WHITE ACRYLIC FACES W/ TRANSLUCENT VINYL GRAPHICS APPLIED FIRST SURFACE. 1" (JEWELITE) TRIM CAP, PAINT TO MATCH WITH LOGO. W/ 3/16" THICK CLEAR POLYCARBONATE BACKS W/ WHITE VINYL. LETTERS PAINTED **PMS 021 ORANGE, PMS 485 RED, PMS 349C GREEN**

RETURN TO MATCH FACE COLOR. LETTERS TO BE DUAL-ILLUMINATED W/ WHITE LEDS.

**PAINT SPECS: PMS 021 ORANGE, PMS 485 RED, PMS 349C GREEN**  
**VINYL SPECS: 3M 3630-44 ORANGE, 3M 3630-33 RED, 3M 3630-26 GREEN**

Front & Side View - 72" Internally Illuminated Remote Channel Logo - **Sign 5**

3/8" = 1'-0"

Display Square Footage: **27.4**

Customer Notes:

Customer Approval: \_\_\_\_\_ DATE: \_\_\_\_\_

Page: 8



Complies with  
UL 48  
CSA C22.2 No.207

THE STRUCTURAL DESIGN CONFORMS TO THE FOLLOWING CODES AND SPECIFICATIONS:  
THE FLORIDA BUILDING CODE SIXTH EDITION (2017), THE AMERICAN INSTITUTE OF STEEL  
CONSTRUCTION(MANUAL OF STEEL CONSTRUCTION, 9TH EDITION), THE AMERICAN WELDING  
SOCIETY(AWS D1.1-15), THE AMERICAN CONCRETE INSTITUTE BUILDING CODE REQUIREMENTS  
FOR STRUCTURAL CONCRETE(ACI 308-14), THE SPECIFICATION FOR ALUMINUM STRUCTURES  
BY THE ALUMINUM ASSOCIATION(CURRENT EDITION).



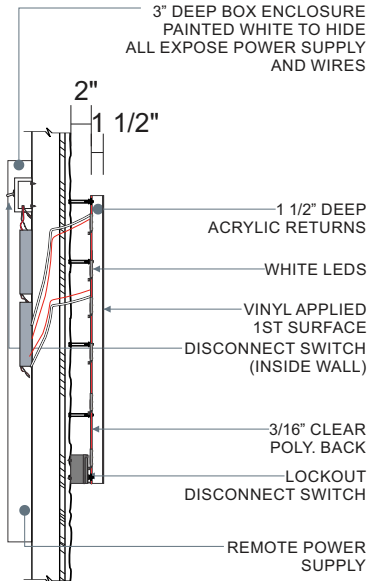
DATE	REV.	DESCRIPTION
09.10.20	R14	make changes in monument sign, with faces placements per email
10.07.20	R15	Make changes on gas price faces
10.13.20	R16	Update Art per changes request in files
10.22.20	R17	Update art per comments in email
11.03.20	R18	Update art per revised comments on art book
11.11.20	R19	Fix the striping on storefront
11.30.20	R20	Add new elevations to art
12.03.20	R21	Move RR sing per request
12.17.20	R22	Update Art per comments

ZONING: CMU

SQUARE FOOTAGE FORMULA



NIGHT VIEW



SIDE DETAIL: NTS

LEGEND LIST

- S1 — 1 1/2" DEEP CLEAR ACRYLIC RETURNS
- S2 — BACK WITH 3/16" THICK CLEAR POLY.
- V1 — 3M 3630-33 RED
- V2 — 3M BLACK

ONE (1) FACE & HALO LIT “**ROOST**” WALL SIGN. 1 1/2” THICK CLEAR ACRYLIC LETTERS/LOGO CAVITY ROUTED OUT FROM BACK. BACK WITH FLAT 3/16” THICK CLEAR POLY. SHEET. VINYL APPLIED FIRST SURFACE OF LOGO PER SPECS.

NOTE: RETURNS OF LETTER/LOGO TO BE OPAQUE  
NOTE: CHICKEN & BISCUITS SPECS TO BE DETERMINED

Front & Side View - Roost Face/Halo S/F Wall Sign - **Sign 6**  
1/2" = 1'-0"

Display Square Footage (Logo): **33.3**

Customer Notes:

Customer Approval: \_\_\_\_\_ DATE: \_\_\_\_\_

Page: 9



Complies with  
UL 48  
CSA C22.2 No.207

THE STRUCTURAL DESIGN CONFORMS TO THE FOLLOWING CODES AND SPECIFICATIONS:  
THE FLORIDA BUILDING CODE SIXTH EDITION (2017), THE AMERICAN INSTITUTE OF STEEL  
CONSTRUCTION(MANUAL OF STEEL CONSTRUCTION, 9TH EDITION), THE AMERICAN WELDING  
SOCIETY(AWIS D1.1-15), THE AMERICAN CONCRETE INSTITUTE BUILDING CODE REQUIREMENTS  
FOR STRUCTURAL CONCRETE(ACI 308-14), THE SPECIFICATION FOR ALUMINUM STRUCTURES  
BY THE ALUMINUM ASSOCIATION(CURRENT EDITION).

DATE	REV.	DESCRIPTION
09.10.20	R14	make changes in monument sign, with faces placements per email
10.07.20	R15	Make changes on gas price faces
10.13.20	R16	Update Art per changes request in files
10.22.20	R17	Update art per comments in email
11.03.20	R18	Update art per revised comments on art book
11.11.20	R19	Fix the striping on storefront
11.30.20	R20	Add new elevations to art
12.03.20	R21	Move RR sing per request
12.17.20	R22	Update Art per comments

ZONING: CMU

SQUARE FOOTAGE FORMULA

Code Information:

Formula: Total aggregate wall signs  
3 sf per Lin ft of bldg frontage

Allowed total:	236.4 sqft
Keystone Wall Sign:	14.6 sqft
Roost Halo W/S:	33.3 sqft
7-11 Logo Wall Sign:	27.4 sqft
Roost Halo W/S:	33.3 sqft
7-11 Logo Wall Sign:	27.3 sqft
Canopy Sign:	32.0 sqft
Proposed total:	167.9 sqft

Customer Notes:

Customer Approval: \_\_\_\_\_ DATE \_\_\_\_\_

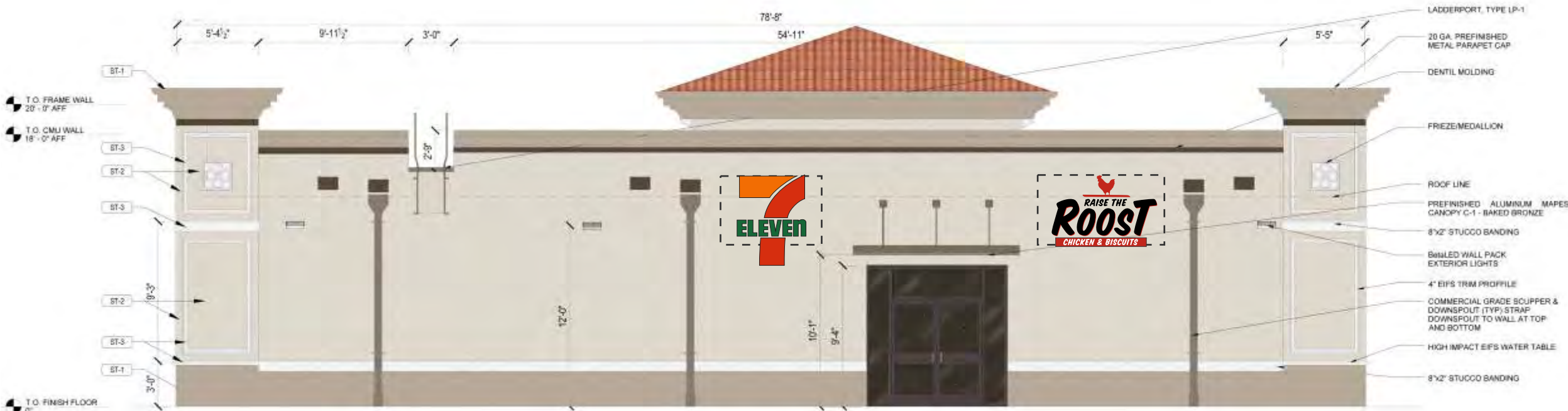
Page: 10



Complies with  
UL 48  
CSA C21.2 No.207

THE STRUCTURAL DESIGN CONFORMS TO THE FOLLOWING CODES AND SPECIFICATIONS:  
THE FLORIDA BUILDING CODE SIXTH EDITION (2017), THE AMERICAN INSTITUTE OF STEEL  
CONSTRUCTION(MANUAL OF STEEL CONSTRUCTION, 9TH EDITION), THE AMERICAN WELDING  
SOCIETY(AWS D1.1-15), THE AMERICAN CONCRETE INSTITUTE BUILDING CODE REQUIREMENTS  
FOR STRUCTURAL CONCRETE(ACI 308-14), THE SPECIFICATION FOR ALUMINUM STRUCTURES  
BY THE ALUMINUM ASSOCIATION(CURRENT EDITION).

NOTE: ELEVATIONS AND ILLUSTRATED SIGNAGE REQUIRES CORPORATE 7-ELEVEN APPROVAL PRIOR TO PRODUCTION



Proposed North Elevation - Signs 5 & 6

1/8"= 1'-0"

www.harbingersign.com

CLIENT: 7-Eleven #41309 (1044918)

ADDRESS: KNIGHTS AND LAUREL  
VENICE, FL 32569

CONTACT:DPM: RCC:

SALES ASSOC.: Rick Guarino

PROJECT MGR: Brian Hutto

DESIGNER: Brandon Winebarger/Mullins/F Mercado

SVE\_41309\_Q103760\_R22

F:\Customers\7 Eleven\Art\SVE\_41309\_Q103760\_R22

DATE	REV.	DESCRIPTION
09.10.20	R14	make changes in monument sign, with faces placements per email
10.07.20	R15	Make changes on gas price faces
10.13.20	R16	Update Art per changes request in files
10.22.20	R17	Update art per comments in email
11.03.20	R18	Update art per revised comments on art book
11.11.20	R19	Fix the striping on storefront
11.30.20	R20	Add new elevations to art
12.03.20	R21	Move RR sing per request
12.17.20	R22	Update Art per comments

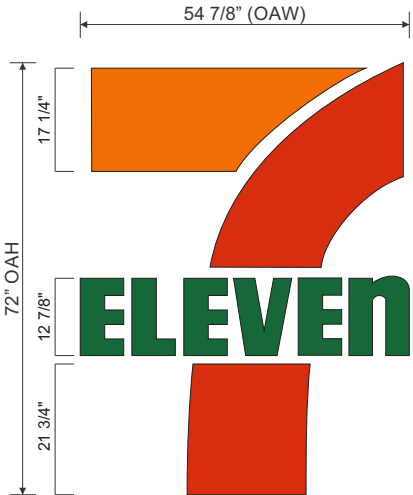
ZONING: CMU

SQUARE FOOTAGE FORMULA

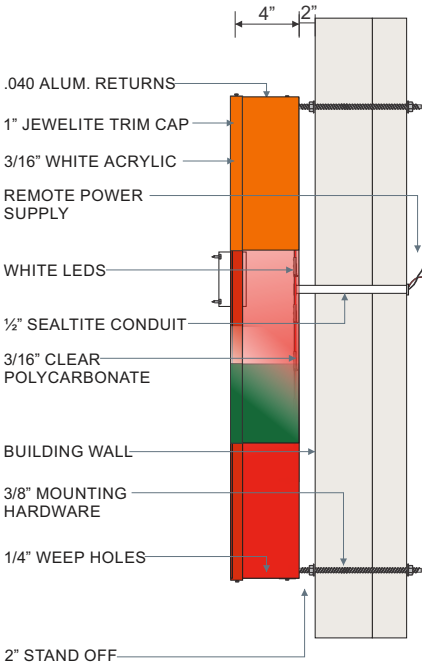
Customer Notes:

Customer Approval:\_\_\_\_DATE

Page: 11



NIGHT VIEW



SIDE DETAIL: NTS

ONE (1) 72" TALL DUAL ILLUMINATED REMOTE MOUNTED LOGO. 4" DEEP ALUMINUM RETURNS. 3/16" THICK WHITE ACRYLIC FACES W/ TRANSLUCENT VINYL GRAPHICS APPLIED FIRST SURFACE. 1" (JEWELITE) TRIM CAP, PAINT TO MATCH WITH LOGO. W/ 3/16" THICK CLEAR POLYCARBONATE BACKS W/ WHITE VINYL. LETTERS PAINTED **PMS 021 ORANGE, PMS 485 RED, PMS 349C GREEN**

RETURN TO MATCH FACE COLOR. LETTERS TO BE DUAL-ILLUMINATED W/ WHITE LEDS.

**PAINT SPECS: PMS 021 ORANGE, PMS 485 RED, PMS 349C GREEN**  
**VINYL SPECS: 3M 3630-44 ORANGE, 3M 3630-33 RED, 3M 3630-26 GREEN**

Front & Side View - 72" Internally Illuminated Remote Channel Logo - **Sign 7**

3/8" = 1'-0"

Display Square Footage: **27.4**

www.harbingersign.com

CLIENT: 7-Eleven #41309 (1044918)

ADDRESS: KNIGHTS AND LAUREL  
VENICE, FL 32569

CONTACT:DPM: RCC:

SALES ASSOC.: Rick Guarino

PROJECT MGR: Brian Hutto

DESIGNER: Brandon Winebarger/Mullins/F Mercado

SVE\_41309\_Q103760\_R22

F:\Customers\7 Eleven\Art\SVE\_41309\_Q103760\_R22

DATE	REV.	DESCRIPTION
09.10.20	R14	make changes in monument sign, with faces placements per email
10.07.20	R15	Make changes on gas price faces
10.13.20	R16	Update Art per changes request in files
10.22.20	R17	Update art per comments in email
11.03.20	R18	Update art per revised comments on art book
11.11.20	R19	Fix the striping on storefront
11.30.20	R20	Add new elevations to art
12.03.20	R21	Move RR sing per request
12.17.20	R22	Update Art per comments

ZONING: CMU

SQUARE FOOTAGE FORMULA

Code Information:

Formula: Total aggregate wall signs  
3 sf per Lin ft of bldg frontage

Allowed total:	236.4 sqft
Keystone Wall Sign:	14.6 sqft
Roost Halo W/S:	33.3 sqft
7-11 Logo Wall Sign:	27.4 sqft
Roost Halo W/S:	33.3 sqft
7-11 Logo Wall Sign:	27.3 sqft
Canopy Sign:	32.0 sqft
Proposed total:	167.9 sqft

Customer Notes:

Customer Approval: \_\_\_\_\_ DATE: \_\_\_\_\_

NOTE: ELEVATIONS AND ILLUSTRATED SIGNAGE REQUIRES CORPORATE 7-ELEVEN APPROVAL PRIOR TO PRODUCTION  
NOTE: CUSTOMER TO CONFIRM PLACEMENT OF 7-11 LOGO C.L WALL SIGNAGE

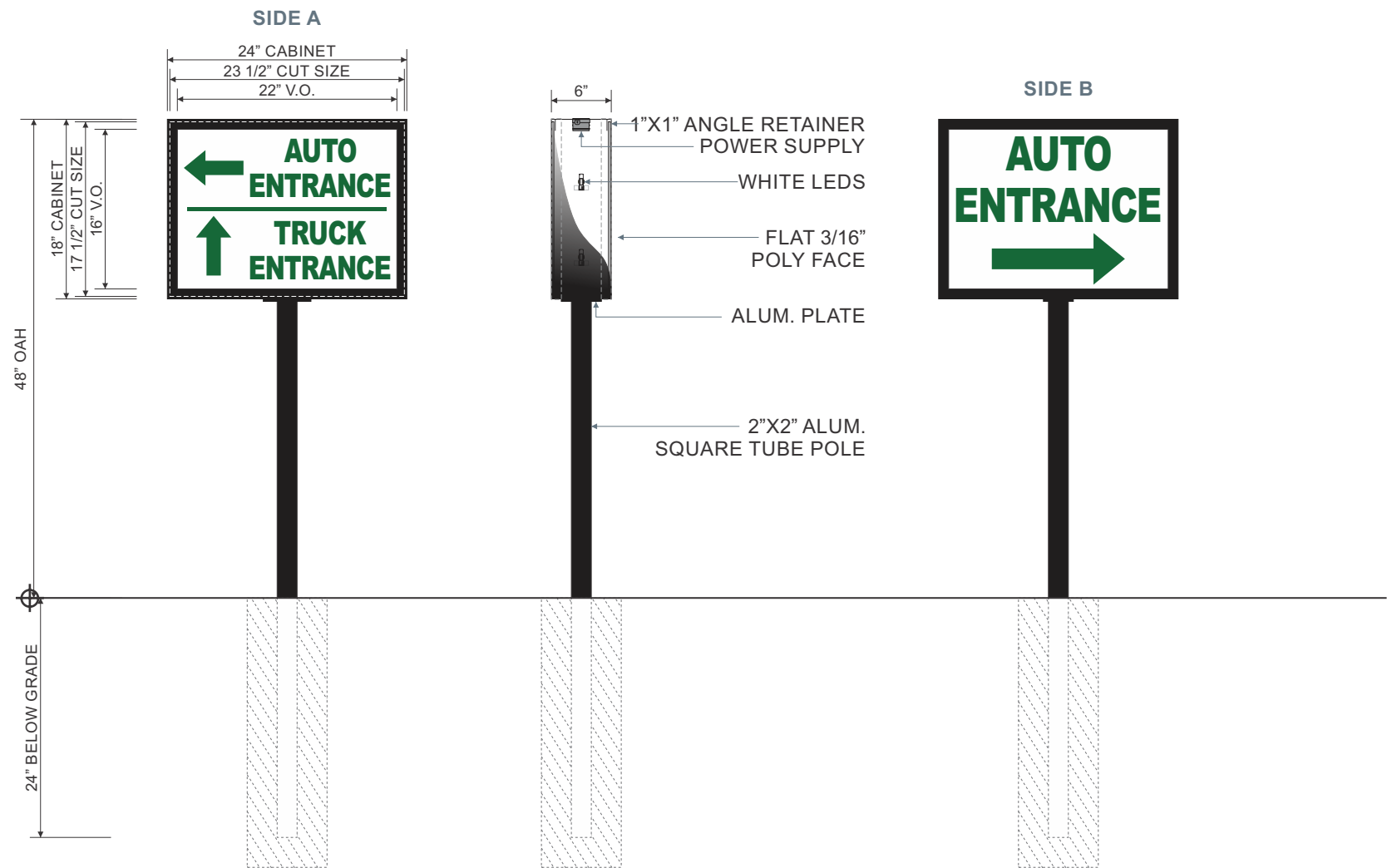


Proposed West Elevation - Sign 7

1/8"= 1'-0"



NOTE: THIS SIGN TYPE REQUIRES CORPORATE 7-ELEVEN EXCEPTION FORM TO BE COMPLETED PRIOR TO PERMITTING & MANUFACTURING



Code Information:	
Allowed:	4.0 sqft
Proposed:	3.0 sqft

TWO (2) D/F INTERNALLY ILLUMINATED DIRECTIONAL SIGN CABINETS.  
3/16" THICK FLAT WHITE POLYCARBONATE FACES W/ TRANSLUCENT VINYL GRAPHICS APPLIED FIRST SURFACE.  
6" DEEP ALUM. CABINET W/ 1" RETAINERS TO BE PAINTED **TRICORN BLACK SW 6258**.  
CABINET TO BE INTERNALLY ILLUMINATED W/ WHITE LEDS.

VINYL SPECS: 3M 3630-26 GREEN  
PAINT SPECS: TRICORN BLACK SW 6258

NOTE: ARROWS TO ALWAYS BE FACING TOWARDS STORE.  
NOTE: LOGO NOT ALLOWED PER CODE.

Front Elevation & Side Detail - Alternate D/F Directional Sign Cabinet - Sign 8  
3/4" = 1'-0"

Display Square Footage: 3.0 Each

www.harbingersign.com

CLIENT: 7-Eleven #41309 (1044918)

ADDRESS: KNIGHTS AND LAUREL  
VENICE, FL 32569

CONTACT:DPM: RCC:

SALES ASSOC.: Rick Guarino

PROJECT MGR: Brian Hutto

DESIGNER: Brandon Winebarger/Mullins/F Mercado

SVE\_41309\_Q103760\_R22

F:\Customers\7 Eleven\Art\SVE\_41309\_Q103760\_R22

DATE	REV.	DESCRIPTION
09.10.20	R14	make changes in monument sign, with faces placements per email
10.07.20	R15	Make changes on gas price faces
10.13.20	R16	Update Art per changes request in files
10.22.20	R17	Update art per comments in email
11.03.20	R18	Update art per revised comments on art book
11.11.20	R19	Fix the striping on storefront
11.30.20	R20	Add new elevations to art
12.03.20	R21	Move RR sing per request
12.17.20	R22	Update Art per comments

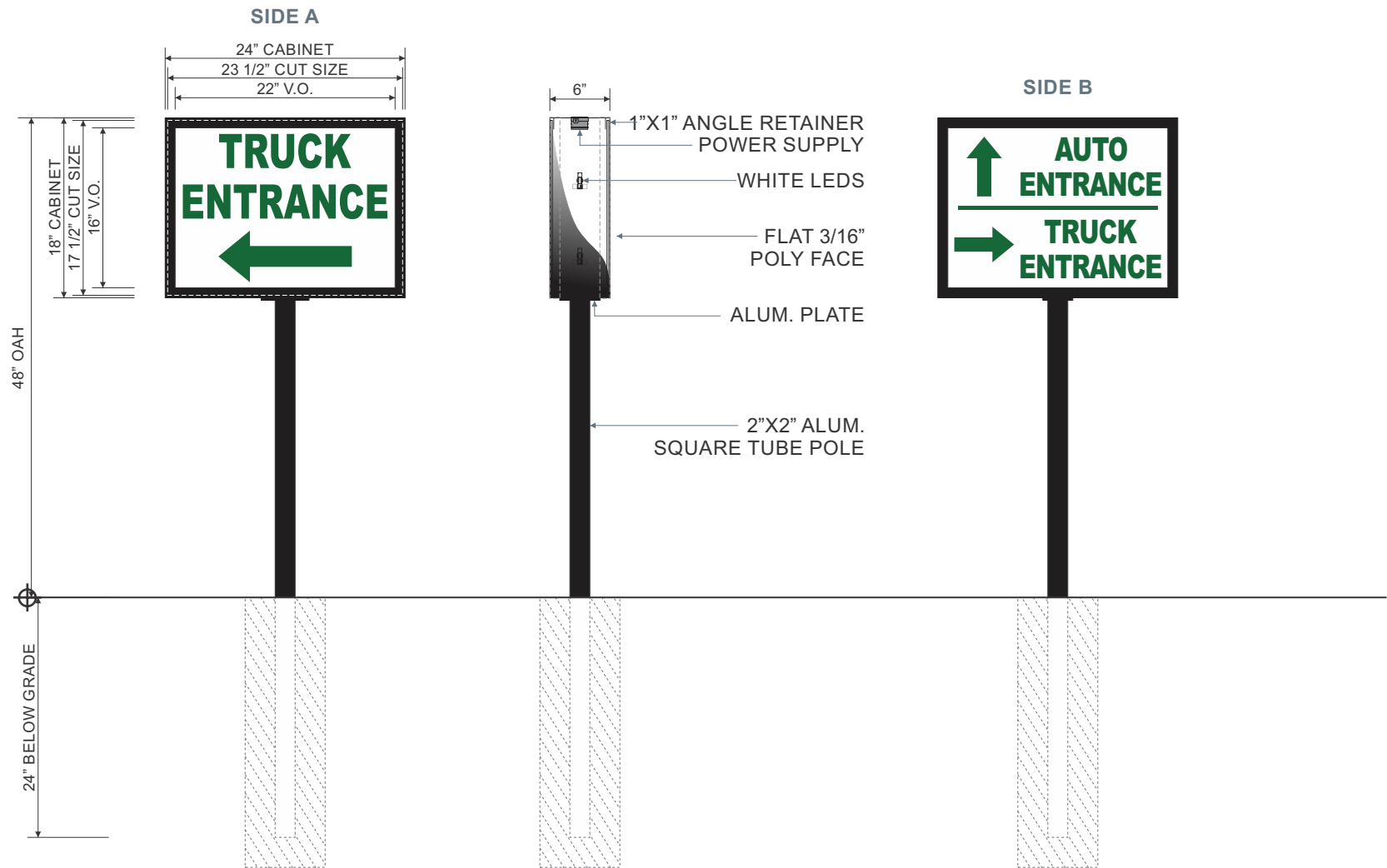
ZONING: CMU

SQUARE FOOTAGE FORMULA

Customer Notes:

Customer Approval: \_\_\_\_\_ DATE: \_\_\_\_\_

NOTE: THIS SIGN TYPE REQUIRES CORPORATE 7-ELEVEN EXCEPTION FORM TO BE COMPLETED PRIOR TO PERMITTING & MANUFACTURING



Code Information:	
Allowed:	4.0 sqft
Proposed:	3.0 sqft

ONE (1) D/F INTERNALLY ILLUMINATED DIRECTIONAL SIGN CABINETS.  
3/16" THICK FLAT WHITE POLYCARBONATE FACES W/ TRANSLUCENT VINYL GRAPHICS APPLIED FIRST SURFACE.  
6" DEEP ALUM. CABINET W/ 1" RETAINERS TO BE PAINTED **TRICORN BLACK SW 6258**.  
CABINET TO BE INTERNALLY ILLUMINATED W/ WHITE LEDS.

VINYL SPECS: 3M 3630-26 GREEN  
PAINT SPECS: TRICORN BLACK SW 6258

NOTE: ARROWS TO ALWAYS BE FACING TOWARDS STORE.  
NOTE: LOGO NOT ALLOWED PER CODE.

Front Elevation & Side Detail - Alternate D/F Directional Sign Cabinet - Sign 9  
3/4" = 1'-0"

Display Square Footage: 3.0 Each

www.harbingersign.com

CLIENT: 7-Eleven #41309 (1044918)

ADDRESS: KNIGHTS AND LAUREL  
VENICE, FL 32569

CONTACT:DPM: RCC:

SALES ASSOC.: Rick Guarino

PROJECT MGR: Brian Hutto

DESIGNER: Brandon Winebarger/Mullins/F Mercado

SVE\_41309\_Q103760\_R22

F:\Customers\7 Eleven\Art\SVE\_41309\_Q103760\_R22

DATE	REV.	DESCRIPTION
09.10.20	R14	make changes in monument sign, with faces placements per email
10.07.20	R15	Make changes on gas price faces
10.13.20	R16	Update Art per changes request in files
10.22.20	R17	Update art per comments in email
11.03.20	R18	Update art per revised comments on art book
11.11.20	R19	Fix the striping on storefront
11.30.20	R20	Add new elevations to art
12.03.20	R21	Move RR sing per request
12.17.20	R22	Update Art per comments

ZONING: CMU

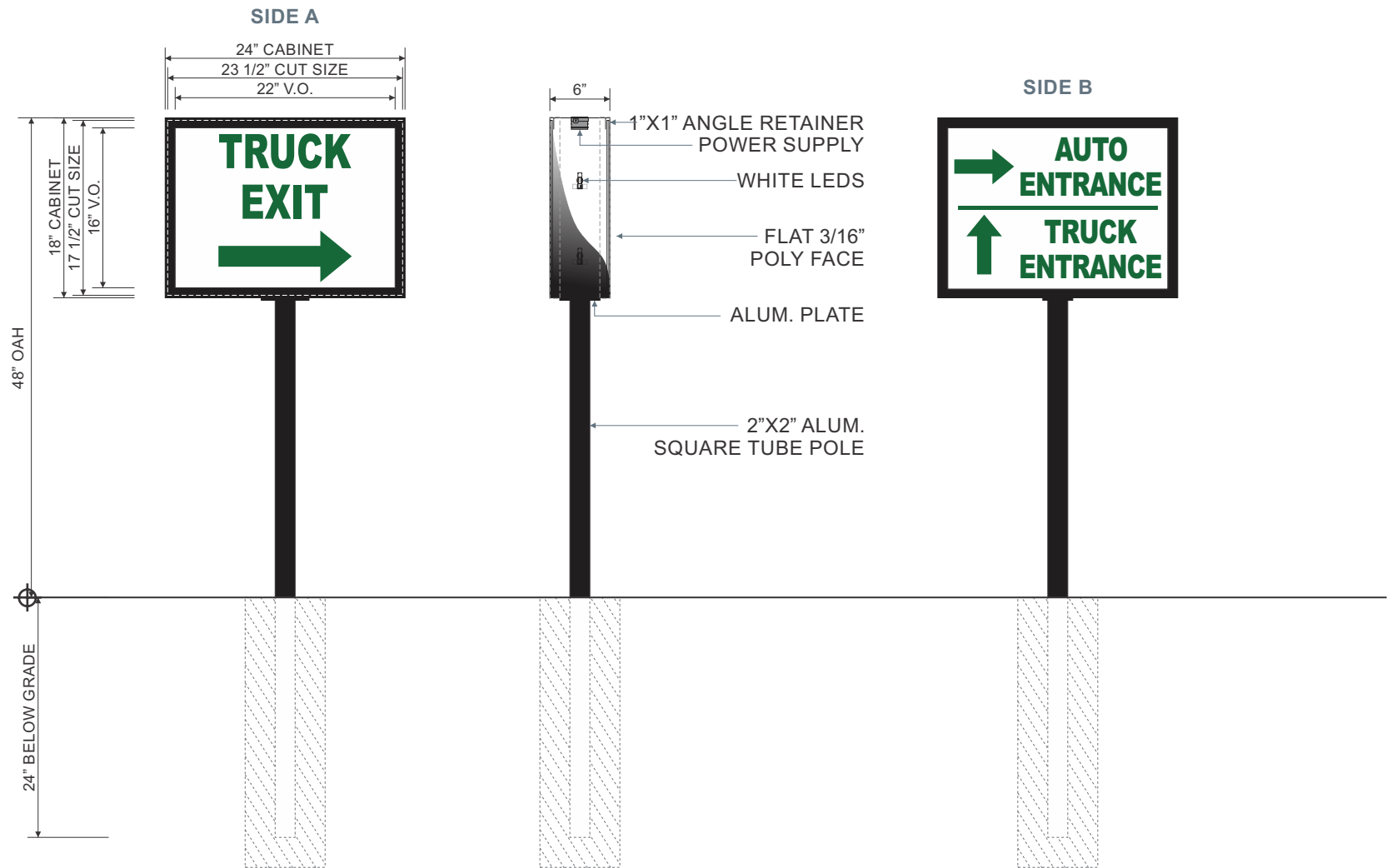
SQUARE FOOTAGE FORMULA

Customer Notes:

Customer Approval: \_\_\_\_\_ DATE: \_\_\_\_\_

Page: 14

NOTE: THIS SIGN TYPE REQUIRES CORPORATE 7-ELEVEN EXCEPTION FORM TO BE COMPLETED PRIOR TO PERMITTING & MANUFACTURING



Code Information:	
Allowed:	4.0 sqft
Proposed:	3.0 sqft

ONE (1) D/F INTERNALLY ILLUMINATED DIRECTIONAL SIGN CABINETS.  
3/16" THICK FLAT WHITE POLYCARBONATE FACES W/ TRANSLUCENT VINYL GRAPHICS APPLIED FIRST SURFACE.  
6" DEEP ALUM. CABINET W/ 1" RETAINERS TO BE PAINTED **TRICORN BLACK SW 6258**.  
CABINET TO BE INTERNALLY ILLUMINATED W/ WHITE LEDS.

VINYL SPECS: 3M 3630-26 GREEN  
PAINT SPECS: TRICORN BLACK SW 6258

NOTE: ARROWS TO ALWAYS BE FACING TOWARDS STORE.  
NOTE: LOGO NOT ALLOWED PER CODE.

Front Elevation & Side Detail - Alternate D/F Directional Sign Cabinet - Sign 10  
3/4" = 1'-0"

Display Square Footage: 3.0 Each

www.harbingersign.com

CLIENT: 7-Eleven #41309 (1044918)

ADDRESS: KNIGHTS AND LAUREL  
VENICE, FL 32569

CONTACT:DPM: RCC:

SALES ASSOC.: Rick Guarino

PROJECT MGR: Brian Hutto

DESIGNER: Brandon Winebarger/Mullins/F Mercado

SVE\_41309\_Q103760\_R22

F:\Customers\7 Eleven\Art\SVE\_41309\_Q103760\_R22

DATE	REV.	DESCRIPTION
09.10.20	R14	make changes in monument sign, with faces placements per email
10.07.20	R15	Make changes on gas price faces
10.13.20	R16	Update Art per changes request in files
10.22.20	R17	Update art per comments in email
11.03.20	R18	Update art per revised comments on art book
11.11.20	R19	Fix the striping on storefront
11.30.20	R20	Add new elevations to art
12.03.20	R21	Move RR sing per request
12.17.20	R22	Update Art per comments

ZONING: CMU

SQUARE FOOTAGE FORMULA

Customer Notes:

Customer Approval: \_\_\_\_\_ DATE: \_\_\_\_\_

Page: 15

www.harbingersign.com

CLIENT: 7-Eleven #41309 (1044918)

ADDRESS: KNIGHTS AND LAUREL  
VENICE, FL 32569

CONTACT:DPM: RCC:

SALES ASSOC.: Rick Guarino

PROJECT MGR: Brian Hutto

DESIGNER: Brandon Winebarger/Mullins/F Mercado

SVE\_41309\_Q103760\_R22

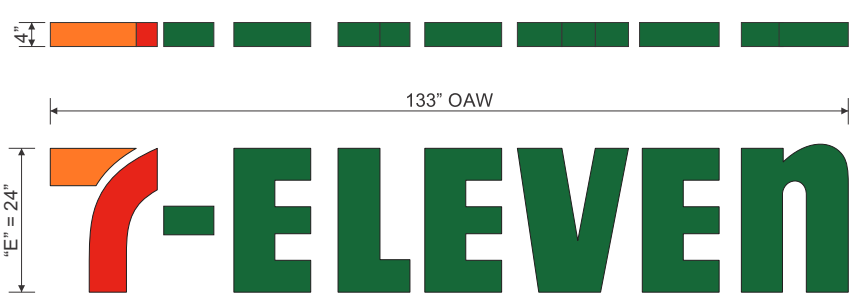
F:\Customers\7 Eleven\Art\SVE\_41309\_Q103760\_R22

DATE	REV.	DESCRIPTION
09.10.20	R14	make changes in monument sign, with faces placements per email
10.07.20	R15	Make changes on gas price faces
10.13.20	R16	Update Art per changes request in files
10.22.20	R17	Update art per comments in email
11.03.20	R18	Update art per revised comments on art book
11.11.20	R19	Fix the striping on storefront
11.30.20	R20	Add new elevations to art
12.03.20	R21	Move RR sing per request
12.17.20	R22	Update Art per comments

ZONING: CMU

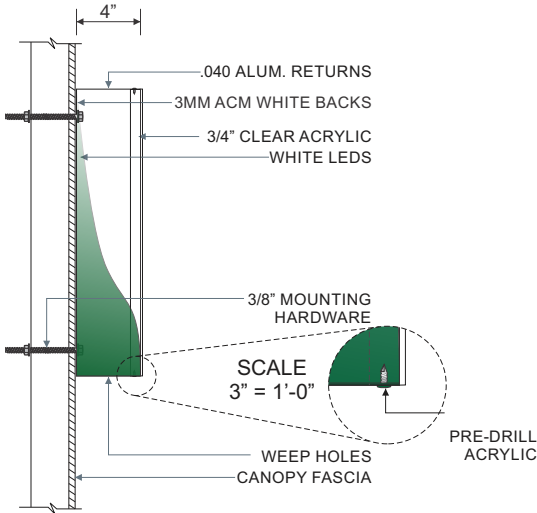
SQUARE FOOTAGE FORMULA

CHANNEL LETTERS TO BE NON-ILLUMINATED



ONE (1) SET OF **HORIZON CL24REM** 24" NON-ILLUMINATED REMOTE CHANNEL LETTERS. 3/4" THICK CLEAR ACRYLIC FACES W/ TRANSLUCENT VINYL GRAPHICS APPLIED FIRST SURFACE. 4" DEEP ALUMINUM RETURNS PAINTED **PMS 021 ORANGE**, **PMS 485 RED**, **PMS 349 GREEN**. FACE ATTACHED W/PRE-DRILLED SCREWS PAINTED TO MATCH WITH LETTERS.

VINYL SPECS: 3M 3630-44 ORANGE, 3M 3630-33 RED, 3M 3630-26 GREEN  
PAINT SPECS: PMS 021 ORANGE, PMS 485 RED, PMS 349 GREEN



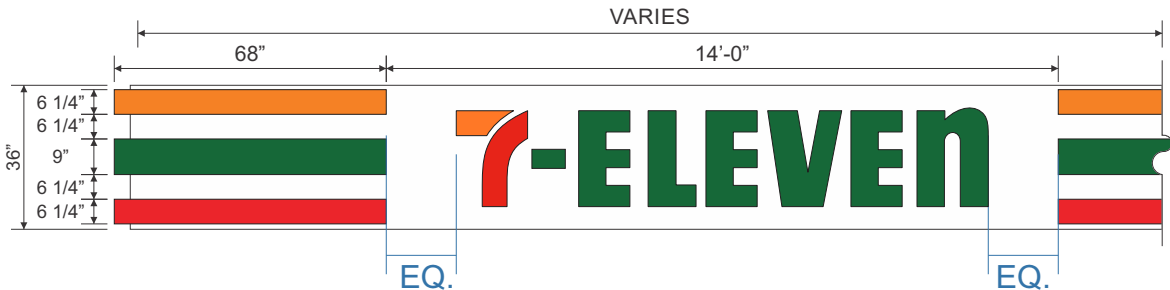
(SIDE DETAIL SCALE: 1"= 1'-0")

Front & Side View - **HORIZON CL24REM** 24" Non-Illuminated Remote Channel Letters - **Sign 11**

3/8" = 1'-0"

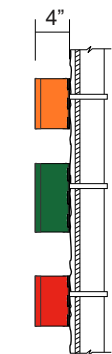
Display Square Footage: **16.2**

STRIPES TO BE NON-ILLUMINATED

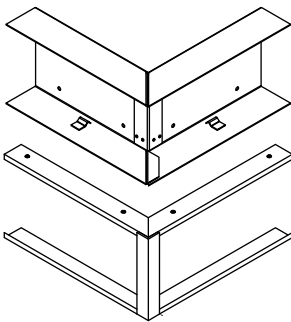


SIX (6) SETS OF 6 1/4" TALL **POLYCARBONATE TRI-STRIPES** FACE CHANNEL FORMS. 3/16" THICK WHITE POLYCARBONATE FACES W/ TRANSLUCENT VINYL GRAPHICS APPLIED FIRST SURFACE. 4" DEEP .063 ALUMINUM RETURNS & "F" TYPE RETAINERS PAINTED TO MATCH FACES.

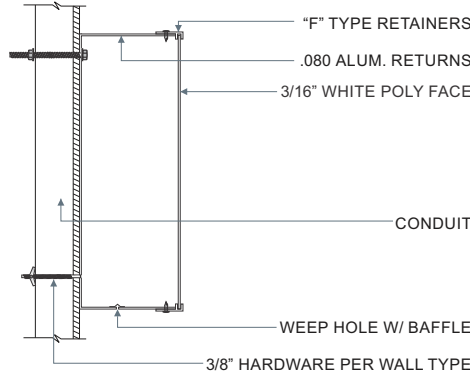
THREE (3) SET OF 9" TALL **POLYCARBONATE TRI-STRIPES** FACE CHANNEL FORMS. 3/16" THICK WHITE POLYCARBONATE FACES W/ TRANSLUCENT VINYL GRAPHICS APPLIED FIRST SURFACE. 4" DEEP .063 ALUMINUM RETURNS & "F" TYPE RETAINERS PAINTED TO MATCH FACES.



PAINT DETAIL



CORNER SECTION DETAIL



SIDE DETAILS NOT TO SCALE

STREET FRONTAGE ELEVATION  
(LEFT SECTION)

ORANGE STRIPE = 68" WIDTH  
GREEN STRIPE = 68" WIDTH  
RED STRIPE = 68" WIDTH

STREET FRONTAGE ELEVATION  
(RIGHT SECTION)

ORANGE STRIPE = 92'-11" WIDTH  
GREEN STRIPE = 97'-4" WIDTH  
RED STRIPE = 101'-4" WIDTH

SIDE ELEVATION

ORANGE STRIPE = 11' - 9" WIDTH  
GREEN STRIPE = 16' - 3" WIDTH  
RED STRIPE = 20'- 1 5/8" WIDTH

Front Elevation - 36" Canopy Height - **Sign And Tri-Stripes Layout - Architectural Element - Sign 11**

1/4" = 1'-0"

Customer Notes:

Customer Approval: \_\_\_\_\_ DATE

Page: 16



DATE	REV.	DESCRIPTION
09.10.20	R14	make changes in monument sign, with faces placements per email
10.07.20	R15	Make changes on gas price faces
10.13.20	R16	Update Art per changes request in files
10.22.20	R17	Update art per comments in email
11.03.20	R18	Update art per revised comments on art book
11.11.20	R19	Fix the striping on storefront
11.30.20	R20	Add new elevations to art
12.03.20	R21	Move RR sing per request
12.17.20	R22	Update Art per comments

ZONING: CMU

SQUARE FOOTAGE FORMULA

Code Information:

Formula: Maximum 18 sf, min ht 8 ft,  
max ht 20 ft; Letters NTE 36 in

Allowed: 18.0 sqft

Proposed: 16.2 sqft

Customer Notes:

Customer Approval: \_\_\_\_\_ DATE: \_\_\_\_\_

Page: 17

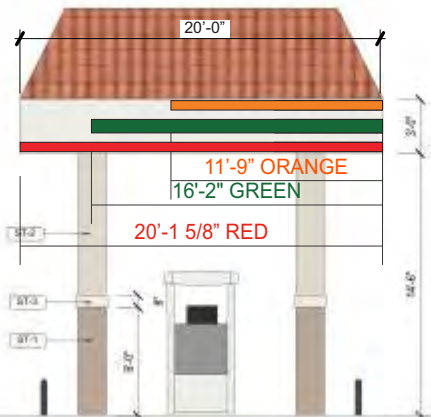


Complies with  
UL 48  
CSA C22.2 No.207

THE STRUCTURAL DESIGN CONFORMS TO THE FOLLOWING CODES AND SPECIFICATIONS:  
THE FLORIDA BUILDING CODE SIXTH EDITION (2017), THE AMERICAN INSTITUTE OF STEEL  
CONSTRUCTION(MANUAL OF STEEL CONSTRUCTION, 9TH EDITION), THE AMERICAN WELDING  
SOCIETY(AWS D1.1-15), THE AMERICAN CONCRETE INSTITUTE BUILDING CODE REQUIREMENTS  
FOR STRUCTURAL CONCRETE(ACI 318-14), THE SPECIFICATION FOR ALUMINUM STRUCTURES  
BY THE ALUMINUM ASSOCIATION(CURRENT EDITION).

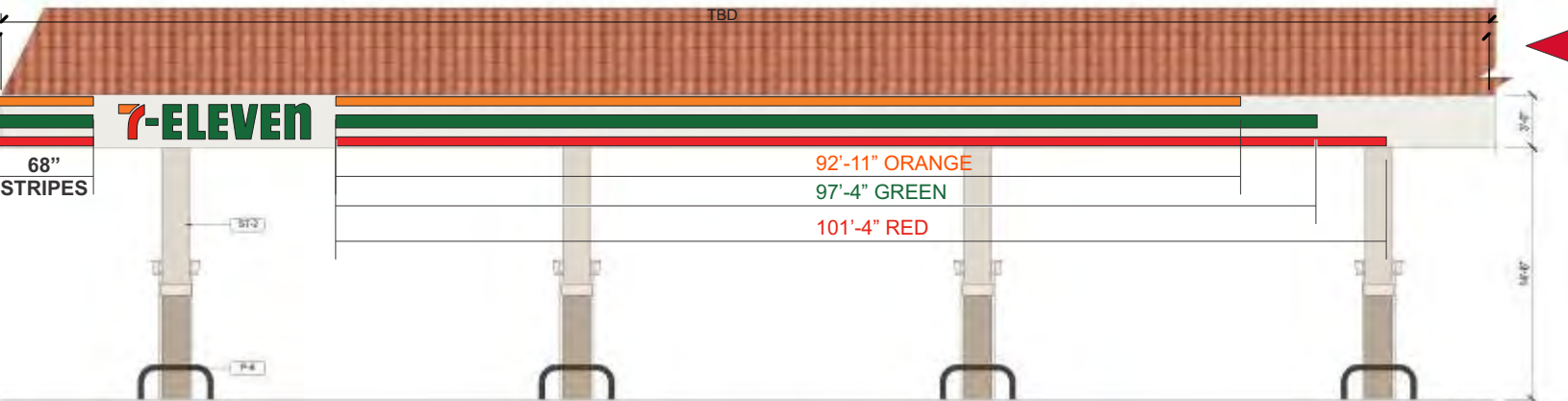
NOTE: CUSTOMER TO ADVISED, LONG END CANOPY DOES NOT SHOW FULL DISPLAY OF CANOPY ELEVATION, CROP IN HALF  
NOTE: CUSTOMER TO PROVIDE FULL SIZE CANOPY ELEVATIONS WITH DIMENSIONS

ILLUMINATED STRIPES



WEST ELEVATION:

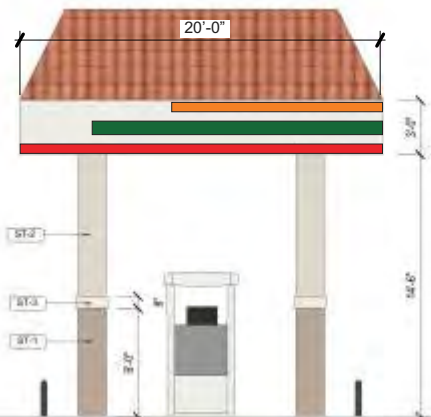
ILLUMINATED STRIPES



SOUTH ELEVATION:

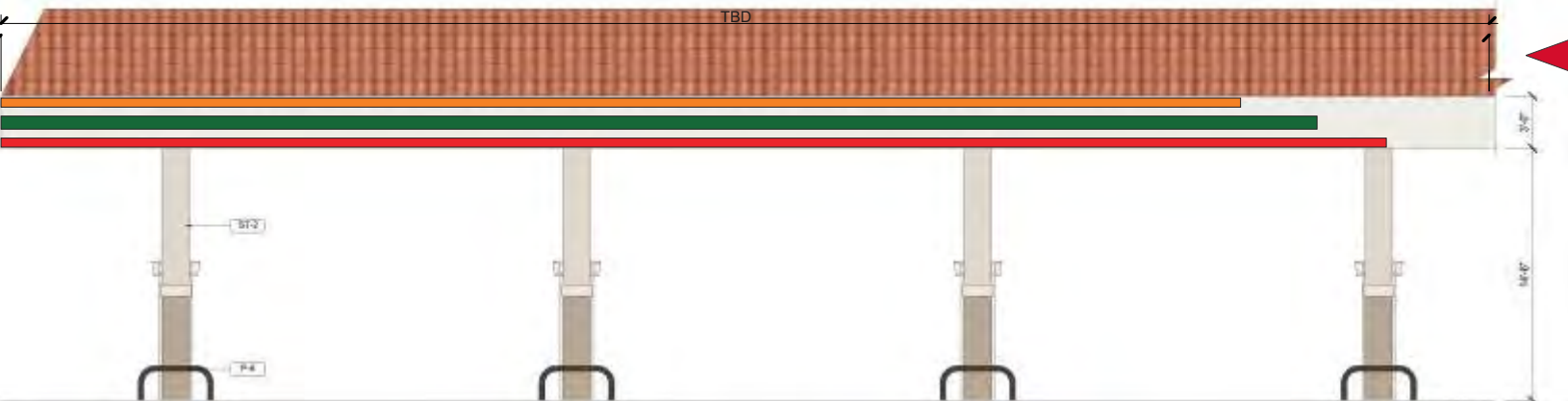
CUSTOMER TO ADVISED,  
CANOPY NOT SHOWN  
IN FULL ELEVATION.  
CANOPY IS CROP FOR  
VIEWING PURPOSE

VINYL STRIPES



EAST ELEVATION:

VINYL STRIPES



NORTH ELEVATION:

CUSTOMER TO ADVISED,  
CANOPY NOT SHOWN  
IN FULL ELEVATION.  
CANOPY IS CROP FOR  
VIEWING PURPOSE



Code Information:	
Formula: Maximum 18 sf, min ht 8 ft, max ht 20 ft; Letters NTE 36 in	
Allowed:	18.0 sqft
Proposed:	14.7 sqft

www.harbingersign.com

CLIENT: 7-Eleven #41309 (1044918)

ADDRESS: KNIGHTS AND LAUREL  
VENICE, FL 32569

CONTACT:DPM: RCC:

SALES ASSOC.: Rick Guarino

PROJECT MGR: Brian Hutto

DESIGNER: Brandon Winebarger/Mullins/F Mercado

SVE\_41309\_Q103760\_R22

F:\Customers\7 Eleven\Art\SVE\_41309\_Q103760\_R22

DATE	REV.	DESCRIPTION
09.10.20	R14	make changes in monument sign, with faces placements per email
10.07.20	R15	Make changes on gas price faces
10.13.20	R16	Update Art per changes request in files
10.22.20	R17	Update art per comments in email
11.03.20	R18	Update art per revised comments on art book
11.11.20	R19	Fix the striping on storefront
11.30.20	R20	Add new elevations to art
12.03.20	R21	Move RR sing per request
12.17.20	R22	Update Art per comments

ZONING: CMU

SQUARE FOOTAGE FORMULA

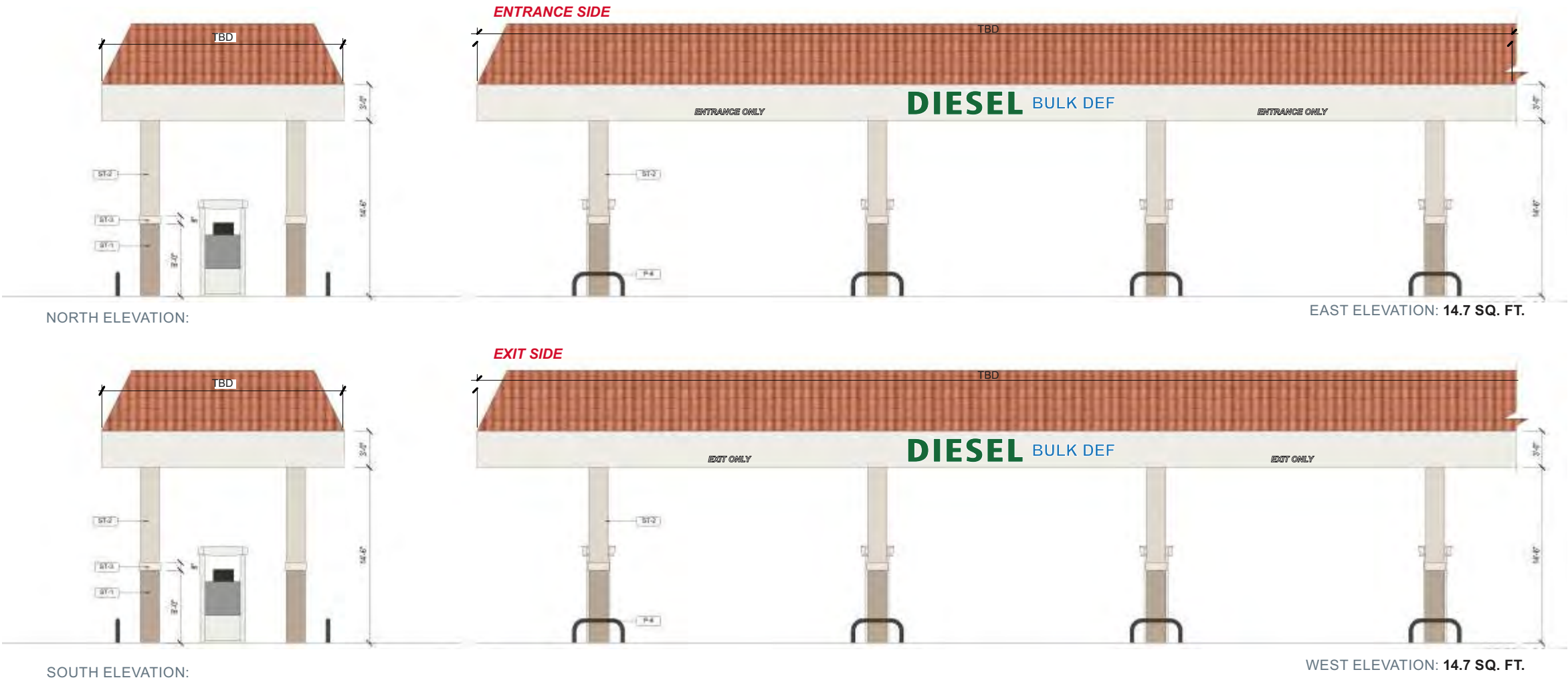
Customer Notes:

Customer Approval: \_\_\_\_\_ DATE: \_\_\_\_\_



Complies with  
UL 48  
CSA C22.2 No.207

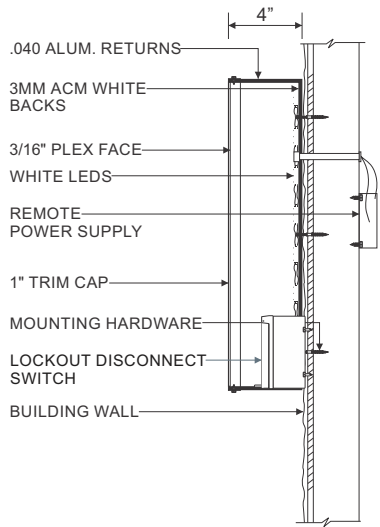
THE STRUCTURAL DESIGN CONFORMS TO THE FOLLOWING CODES AND SPECIFICATIONS:  
THE FLORIDA BUILDING CODE SIXTH EDITION (2017), THE AMERICAN INSTITUTE OF STEEL  
CONSTRUCTION(MANUAL OF STEEL CONSTRUCTION, 9TH EDITION), THE AMERICAN WELDING  
SOCIETY(AWIS D1.1-15), THE AMERICAN CONCRETE INSTITUTE BUILDING CODE REQUIREMENTS  
FOR STRUCTURAL CONCRETE(ACI 308-14), THE SPECIFICATION FOR ALUMINUM STRUCTURES  
BY THE ALUMINUM ASSOCIATION(CURRENT EDITION).





THREE (3) SET OF 16" INTERNALLY ILLUMINATED REMOTE CHANNEL LETTERS. 3/16" THICK WHITE ACRYLIC FACES W/ **3M 3630-26, GREEN** TRANSLUCENT VINYL GRAPHICS APPLIED FIRST SURFACE. LETTERS TO BE INTERNALLY ILLUMINATED W/ WHITE LEDS. 4" DEEP ALUMINUM RETURNS PRE-PAINTED **DURANODIC BRONZE**. 1" **DURANODIC BRONZE** TRIM CAP.

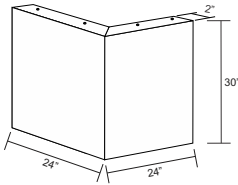
**NOTE: ACTUAL LOCATION OF DISCONNECT SWITCH BOX MAY VARY. CIRCUITS AND SWITCH TO BE PROVIDED BY OTHERS. INPUT VOLTAGE - 120V**  
**ALL SIGNAGE WILL BE (MET) LISTED,(U.L.) 48STD COMPLIANT AND CARRY (MET) LABELS**  
**NOTE: DISCONNECT SWITCH BOX TO BE PAINTED WHITE TO MATCH WITH ACM WHITE BACKER.**



Front & Side View - **Standard 16"** Remote "Car Wash" Channel Letters - **Sign 13**

1/2" = 1'-0"

Display Square Footage: **11.2**

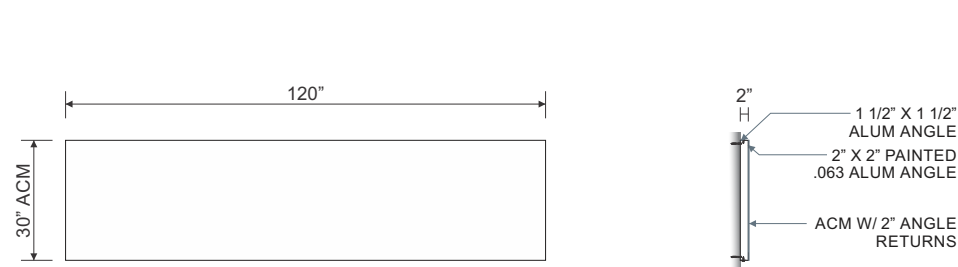


**FOUR (4)** 3MM THICK ACM PANELS FOR AN EXISTING CARWASH BUILDING FASCIA. PAINTED ACM PANELS W/ BRAKE FORMED INTERNAL STRUCTURE.

**NOTE: INSTALL CORNER SECTIONS FIRST**

Front View - **ACM Panels** Tatayama Style ACM Panels - **Sign Type 14**

1/4" = 1'-0"

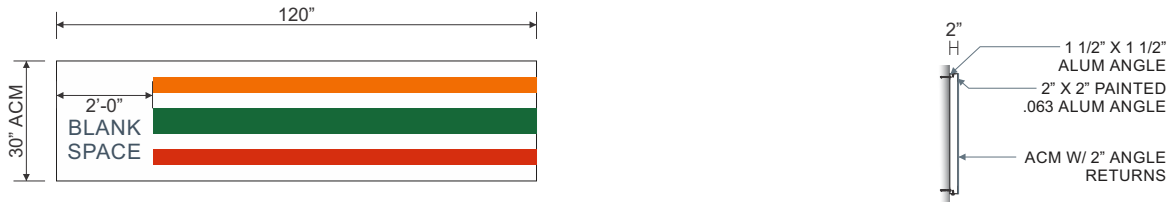


**THREE (3)** 3MM THICK ACM PANELS FOR AN EXISTING CARWASH BUILDING FASCIA. PAINTED ACM PANELS FIRST SURFACE PANELS TO BE ALIGNED FLUSH NEXT TO ONE ANOTHER ONTO EXISTING CARWASH BUILDING FASCIA.

**NOTE: INSTALL CORNER SECTIONS FIRST, THEN MIDDLE SECTION OR ABOVE VEHICULAR ENTRANCE/EXIT OF EACH ELEVATION TRIMMING THE SECTIONS THAT TOUCH THE CORNER PIECES.**

Front View - **ACM Panels** Tatayama Style ACM Panels - **Sign Type 14**

1/4" = 1'-0"



**TWO (2)** 3MM THICK ACM PANELS FOR AN EXISTING CARWASH BUILDING FASCIA. PAINTED ACM PANELS W/ **DIGITALLY PRINTED** GRAPHICS PRINTED APPLIED FIRST SURFACE, W/ **3M 8520 OVER LAMINATE**. PANELS TO BE ALIGNED FLUSH NEXT TO ONE ANOTHER ONTO EXISTING CARWASH BUILDING FASCIA.

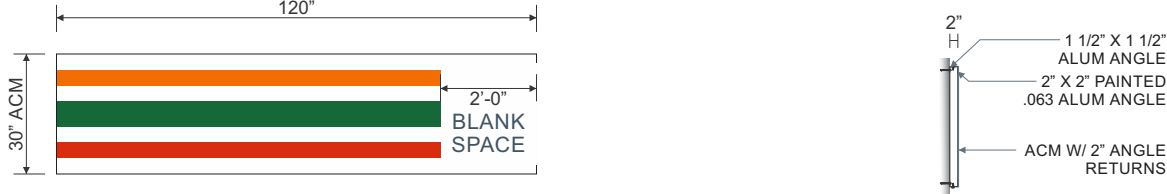
**7-ELEVEN COLOR SPECS: PMS-021C ORANGE, PMS-485C RED, PMS-349C GREEN**

**NOTE: INSTALL CORNER SECTIONS FIRST, THEN TRIMMING THE SECTIONS NEXT TO THE CORNER PIECES**

**NOTE: LONG SIDE PANELS TO HAVE SYMMETRICAL SEAMS**

Front View - **ACM Panels** Tatayama Style ACM Panels - **Sign Type 14**

1/4" = 1'-0"



**TWO (2)** 3MM THICK ACM PANELS FOR AN EXISTING CARWASH BUILDING FASCIA. PAINTED ACM PANELS W/ **DIGITALLY PRINTED** GRAPHICS PRINTED APPLIED FIRST SURFACE, W/ **3M 8520 OVER LAMINATE**. PANELS TO BE ALIGNED FLUSH NEXT TO ONE ANOTHER ONTO EXISTING CARWASH BUILDING FASCIA.

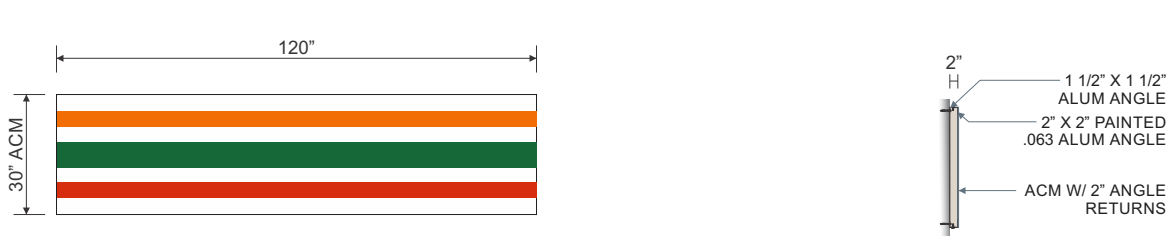
**7-ELEVEN COLOR SPECS: PMS-021C ORANGE, PMS-485C RED, PMS-349C GREEN**

**NOTE: INSTALL CORNER SECTIONS FIRST, THEN TRIMMING THE SECTIONS NEXT TO THE CORNER PIECES**

**NOTE: LONG SIDE PANELS TO HAVE SYMMETRICAL SEAMS**

Front View - **ACM Panels** Tatayama Style ACM Panels - **Sign Type 14**

1/4" = 1'-0"



**FIVE (5)** 3MM THICK ACM PANELS FOR AN EXISTING CARWASH BUILDING FASCIA. PAINTED ACM PANELS W/ **DIGITALLY PRINTED** GRAPHICS PRINTED APPLIED FIRST SURFACE, W/ **3M 8520 OVER LAMINATE**. PANELS TO BE ALIGNED FLUSH NEXT TO ONE ANOTHER ONTO EXISTING CARWASH BUILDING FASCIA.

**7-ELEVEN COLOR SPECS: PMS-021C ORANGE, PMS-485C RED, PMS-349C GREEN**

**NOTE: INSTALL CORNER SECTIONS FIRST, THEN TRIMMING THE SECTIONS NEXT TO THE CORNER PIECES**

**NOTE: LONG SIDE PANELS TO HAVE SYMMETRICAL SEAMS**

Front View - **ACM Panels** Tatayama Style ACM Panels - **Sign Type 14**

1/4" = 1'-0"

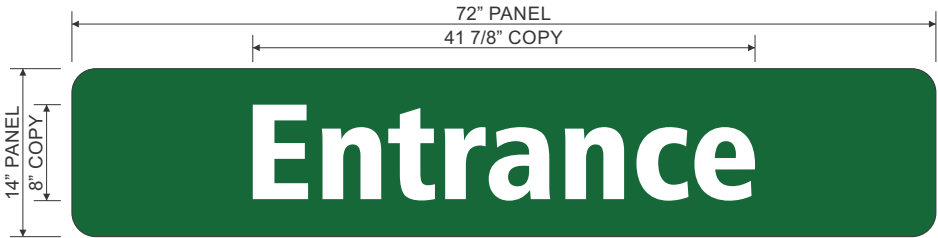
DATE	REV.	DESCRIPTION
09.10.20	R14	make changes in monument sign, with faces placements per email
10.07.20	R15	Make changes on gas price faces
10.13.20	R16	Update Art per changes request in files
10.22.20	R17	Update art per comments in email
11.03.20	R18	Update art per revised comments on art book
11.11.20	R19	Fix the striping on storefront
11.30.20	R20	Add new elevations to art
12.03.20	R21	Move RR sing per request
12.17.20	R22	Update Art per comments

Customer Notes:

Customer Approval: \_\_\_\_\_ DATE: \_\_\_\_\_



DATE	REV.	DESCRIPTION
09.10.20	R14	make changes in monument sign, with faces placements per email
10.07.20	R15	Make changes on gas price faces
10.13.20	R16	Update Art per changes request in files
10.22.20	R17	Update art per comments in email
11.03.20	R18	Update art per revised comments on art book
11.11.20	R19	Fix the striping on storefront
11.30.20	R20	Add new elevations to art
12.03.20	R21	Move RR sing per request
12.17.20	R22	Update Art per comments



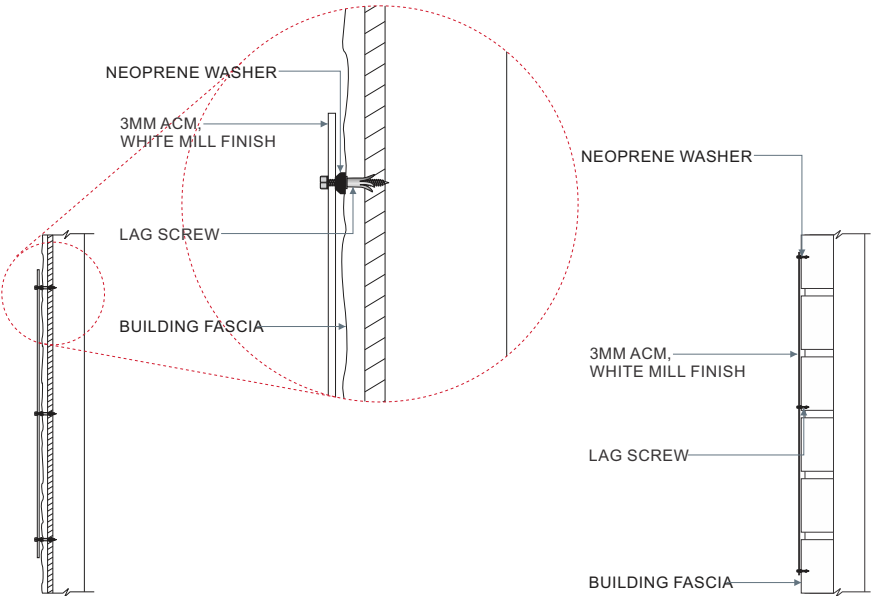
ONE (1) 3MM THICK ACM "ENTRANCE" PANEL. WHITE ACM ROUTED PANEL WITH GREEN VINYL THEN WHITE VINYL ON TOP, APPLIED FIRST SURFACE.  
PANEL TO BE INSTALLED FLUSH ONTO BUILDING WALL.

VINYL COLOR SPECS: 3M 3630-26 GREEN, WHITE

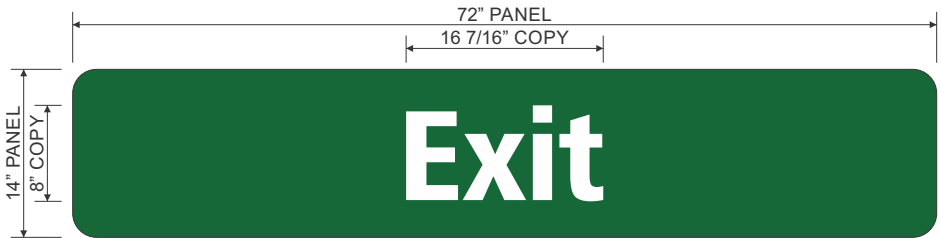
NOTE: MOUNTING METHOD TO CAR WASH BUILDING MAY CHANGE PER LOCATION

Front Elevation & Side Mounting Detail - Standard 1'-2"x6'-0" Entrance Panel - Sign 15

3/4" = 1'-0"



Display Square Footage: 7.0



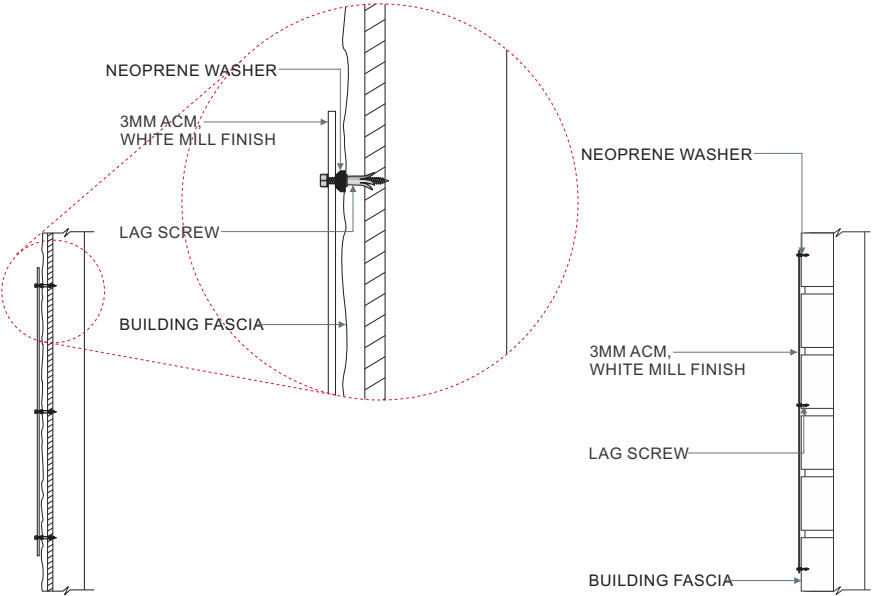
ONE (1) 3MM THICK ACM "EXIT" PANEL. WHITE ACM ROUTED PANEL WITH GREEN VINYL THEN WHITE VINYL ON TOP, APPLIED FIRST SURFACE.  
PANEL TO BE INSTALLED FLUSH ONTO BUILDING WALL.

VINYL COLOR SPECS: 3M 3630-26 GREEN, WHITE

NOTE: MOUNTING METHOD TO CAR WASH BUILDING MAY CHANGE PER LOCATION

Front Elevation & Side Mounting Detail - Standard 1'-2"x6'-0" Exit Panel - Sign 15

3/4" = 1'-0"



Display Square Footage: 7.0

Customer Notes:

Customer Approval: \_\_\_\_\_ DATE: \_\_\_\_\_

www.harbingersign.com

CLIENT: 7-Eleven #41309 (1044918)

ADDRESS: KNIGHTS AND LAUREL  
VENICE, FL 32569

CONTACT:DPM: RCC:

SALES ASSOC.: Rick Guarino

PROJECT MGR: Brian Hutto

DESIGNER: Brandon Winebarger/Mullins/F Mercado

SVE\_41309\_Q103760\_R22

F:\Customers\7 Eleven\Art\SVE\_41309\_Q103760\_R22

DATE	REV.	DESCRIPTION
09.10.20	R14	make changes in monument sign, with faces placements per email
10.07.20	R15	Make changes on gas price faces
10.13.20	R16	Update Art per changes request in files
10.22.20	R17	Update art per comments in email
11.03.20	R18	Update art per revised comments on art book
11.11.20	R19	Fix the striping on storefront
11.30.20	R20	Add new elevations to art
12.03.20	R21	Move RR sing per request
12.17.20	R22	Update Art per comments

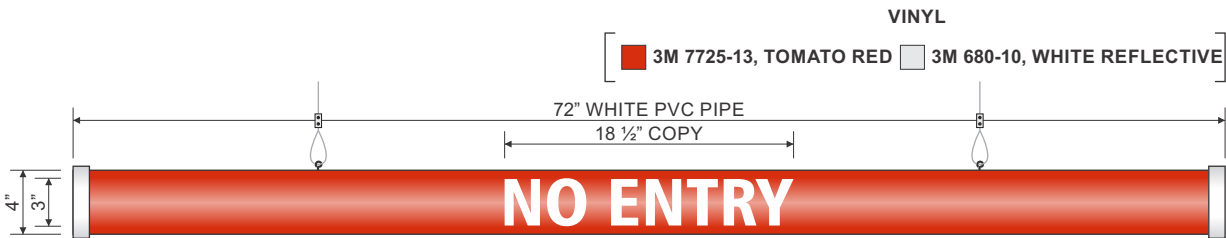
ZONING: CMU

SQUARE FOOTAGE FORMULA

Customer Notes:

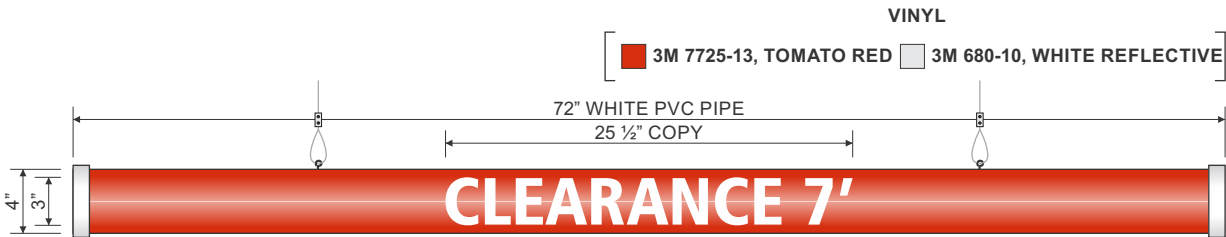
Customer Approval:\_\_\_\_\_DATE\_\_\_\_\_

Page: 22



ONE (1) STANDARD 4" DIAMETER NO ENTRY BAR.  
4" DIAMETER **WHITE** PVC PIPE TO HAVE **3M 7725-13, TOMATO RED** OPAQUE VINYL GRAPHICS APPLIED FIRST SURFACE.  
TWO (2) **WHITE** PVC END CAPS TO BE ON BOTH SIDES OF THE PIPE. PROVIDE TWO (2) EYE BOLTS, SETS OF 4'-0" CABLE W/  
SETS OF HARDWARE (TOP & BOTTOM OF CABLE) FOR ATTACHMENT. EXISTING CLEARANCE BAR TO BE REPLACED WITH THE NEW ONE.

Front Elevation - <b>Standard 4"x72"</b> Clearance Bar - <b>Sign 16</b>	
1" = 1'-0"	Display Square Footage: <b>2.0</b>



ONE (1) STANDARD 4" DIAMETER CLEARANCE BAR.  
4" DIAMETER **WHITE** PVC PIPE TO HAVE **3M 7725-13, TOMATO RED** OPAQUE VINYL GRAPHICS APPLIED FIRST SURFACE.  
TWO (2) **WHITE** PVC END CAPS TO BE ON BOTH SIDES OF THE PIPE. PROVIDE TWO (2) EYE BOLTS, SETS OF 4'-0" CABLE W/  
SETS OF HARDWARE (TOP & BOTTOM OF CABLE) FOR ATTACHMENT. EXISTING CLEARANCE BAR TO BE REPLACED WITH THE NEW ONE.

Front Elevation - <b>Standard 4"x72"</b> Clearance Bar - <b>Sign 16</b>	
1" = 1'-0"	Display Square Footage: <b>2.0</b>

DATE	REV.	DESCRIPTION
09.10.20	R14	make changes in monument sign, with faces placements per email
10.07.20	R15	Make changes on gas price faces
10.13.20	R16	Update Art per changes request in files
10.22.20	R17	Update art per comments in email
11.03.20	R18	Update art per revised comments on art book
11.11.20	R19	Fix the striping on storefront
11.30.20	R20	Add new elevations to art
12.03.20	R21	Move RR sing per request
12.17.20	R22	Update Art per comments

ZONING: CMU

SQUARE FOOTAGE FORMULA

Customer Notes:

Customer Approval: \_\_\_\_\_ DATE: \_\_\_\_\_

Page: 23



Complies with  
UL 48  
CSA C22.2 No.207

THE STRUCTURAL DESIGN CONFORMS TO THE FOLLOWING CODES AND SPECIFICATIONS:  
THE FLORIDA BUILDING CODE SIXTH EDITION (2017), THE AMERICAN INSTITUTE OF STEEL  
CONSTRUCTION(MANUAL OF STEEL CONSTRUCTION, 9TH EDITION), THE AMERICAN WELDING  
SOCIETY(AWS D1.1-15), THE AMERICAN CONCRETE INSTITUTE BUILDING CODE REQUIREMENTS  
FOR STRUCTURAL CONCRETE(ACI 308-14), THE SPECIFICATION FOR ALUMINUM STRUCTURES  
BY THE ALUMINUM ASSOCIATION(CURRENT EDITION).



Car Wash Building East Elevation - New Ground-Up Car Wash Building Signage - Signs 13 & 14

3/16" = 1'-0"

www.harbingersign.com

CLIENT: 7-Eleven #41309 (1044918)

ADDRESS: KNIGHTS AND LAUREL  
VENICE, FL 32569

CONTACT:DPM: RCC:

SALES ASSOC.: Rick Guarino

PROJECT MGR: Brian Hutto

DESIGNER: Brandon Winebarger/Mullins/F Mercado

SVE\_41309\_Q103760\_R22

F:\Customers\7 Eleven\Art\SVE\_41309\_Q103760\_R22

DATE	REV.	DESCRIPTION
09.10.20	R14	make changes in monument sign, with faces placements per email
10.07.20	R15	Make changes on gas price faces
10.13.20	R16	Update Art per changes request in files
10.22.20	R17	Update art per comments in email
11.03.20	R18	Update art per revised comments on art book
11.11.20	R19	Fix the striping on storefront
11.30.20	R20	Add new elevations to art
12.03.20	R21	Move RR sing per request
12.17.20	R22	Update Art per comments

ZONING: CMU

SQUARE FOOTAGE FORMULA

Customer Notes:

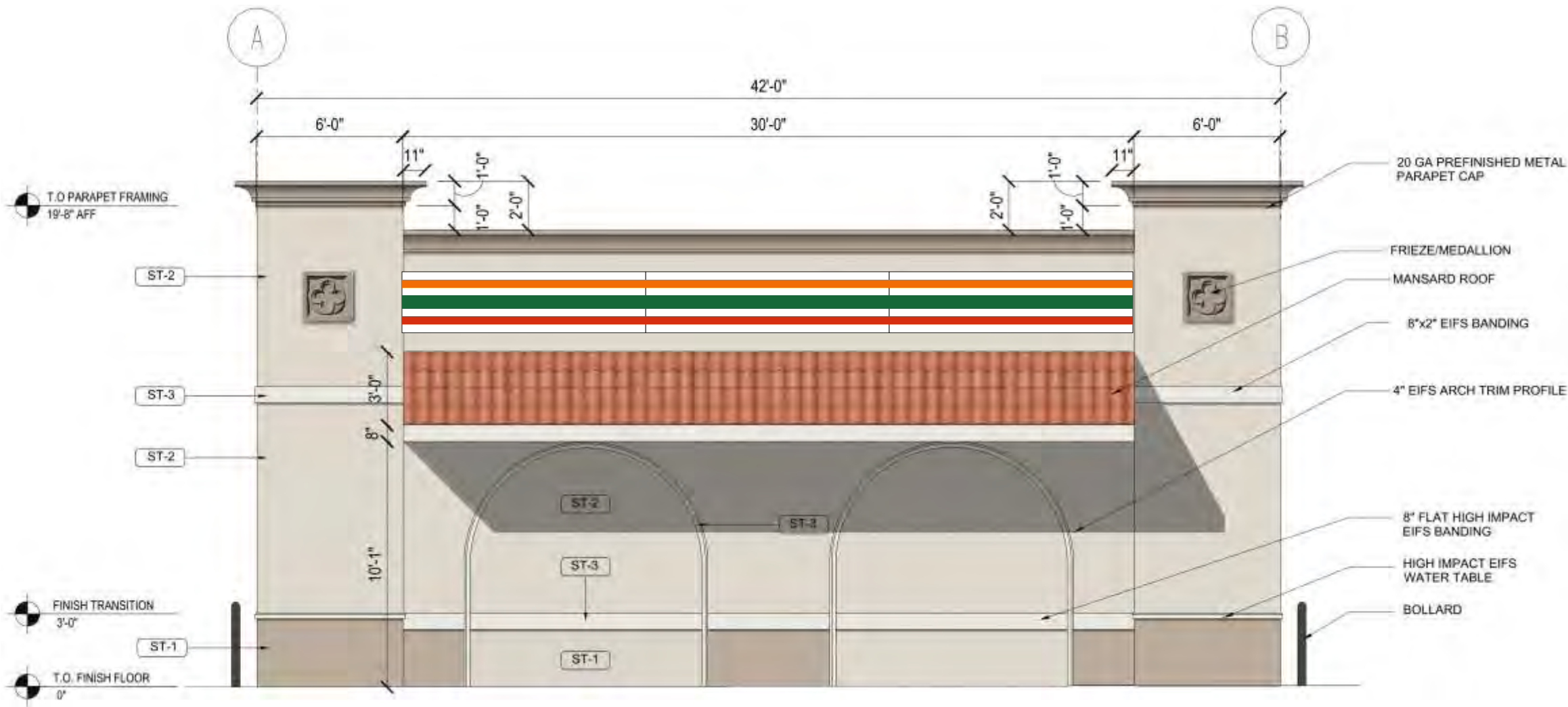
Customer Approval: \_\_\_\_\_ DATE: \_\_\_\_\_

Page: 24



Complies with  
UL 48  
CSA C22.2 No.207

THE STRUCTURAL DESIGN CONFORMS TO THE FOLLOWING CODES AND SPECIFICATIONS:  
THE FLORIDA BUILDING CODE SIXTH EDITION (2017), THE AMERICAN INSTITUTE OF STEEL  
CONSTRUCTION(MANUAL OF STEEL CONSTRUCTION, 9TH EDITION), THE AMERICAN WELDING  
SOCIETY(AWS D1.1-15), THE AMERICAN CONCRETE INSTITUTE BUILDING CODE REQUIREMENTS  
FOR STRUCTURAL CONCRETE(ACI 308-14), THE SPECIFICATION FOR ALUMINUM STRUCTURES  
BY THE ALUMINUM ASSOCIATION(CURRENT EDITION).



Car Wash Building West Elevation - New Ground-Up Car Wash Building Signage - Sign 14

3/16" = 1'-0"



DATE	REV.	DESCRIPTION
09.10.20	R14	make changes in monument sign, with faces placements per email
10.07.20	R15	Make changes on gas price faces
10.13.20	R16	Update Art per changes request in files
10.22.20	R17	Update art per comments in email
11.03.20	R18	Update art per revised comments on art book
11.11.20	R19	Fix the striping on storefront
11.30.20	R20	Add new elevations to art
12.03.20	R21	Move RR sing per request
12.17.20	R22	Update Art per comments

Customer Notes:

Customer Approval: \_\_\_\_\_DATE



Complies with  
UL 48  
CSA C22.2 No.207

THE STRUCTURAL DESIGN CONFORMS TO THE FOLLOWING CODES AND SPECIFICATIONS:  
THE FLORIDA BUILDING CODE SIXTH EDITION (2017), THE AMERICAN INSTITUTE OF STEEL  
CONSTRUCTION(MANUAL OF STEEL CONSTRUCTION, 9TH EDITION), THE AMERICAN WELDING  
SOCIETY(AWS D1.1-15), THE AMERICAN CONCRETE INSTITUTE BUILDING CODE REQUIREMENTS  
FOR STRUCTURAL CONCRETE(ACI 308-14), THE SPECIFICATION FOR ALUMINUM STRUCTURES  
BY THE ALUMINUM ASSOCIATION(CURRENT EDITION).



Car Wash Building North Entrance Elevation - New Ground-Up Car Wash Building Signage - Signs 13, 14, 15 ,16

3/16" = 1'-0"

www.harbingersign.com

CLIENT: 7-Eleven #41309 (1044918)

ADDRESS: KNIGHTS AND LAUREL  
VENICE, FL 32569

CONTACT:DPM: RCC:

SALES ASSOC.: Rick Guarino

PROJECT MGR: Brian Hutto

DESIGNER: Brandon Winebarger/Mullins/F Mercado

SVE\_41309\_Q103760\_R22

F:\Customers\7 Eleven\Art\SVE\_41309\_Q103760\_R22

DATE	REV.	DESCRIPTION
09.10.20	R14	make changes in monument sign, with faces placements per email
10.07.20	R15	Make changes on gas price faces
10.13.20	R16	Update Art per changes request in files
10.22.20	R17	Update art per comments in email
11.03.20	R18	Update art per revised comments on art book
11.11.20	R19	Fix the striping on storefront
11.30.20	R20	Add new elevations to art
12.03.20	R21	Move RR sing per request
12.17.20	R22	Update Art per comments

ZONING: CMU

SQUARE FOOTAGE FORMULA

Customer Notes:

Customer Approval: \_\_\_\_\_DATE



Car Wash Building South Exit Elevation - New Ground-Up Car Wash Building Signage - Signs 13, 14, 15 ,16

3/16" = 1'-0"