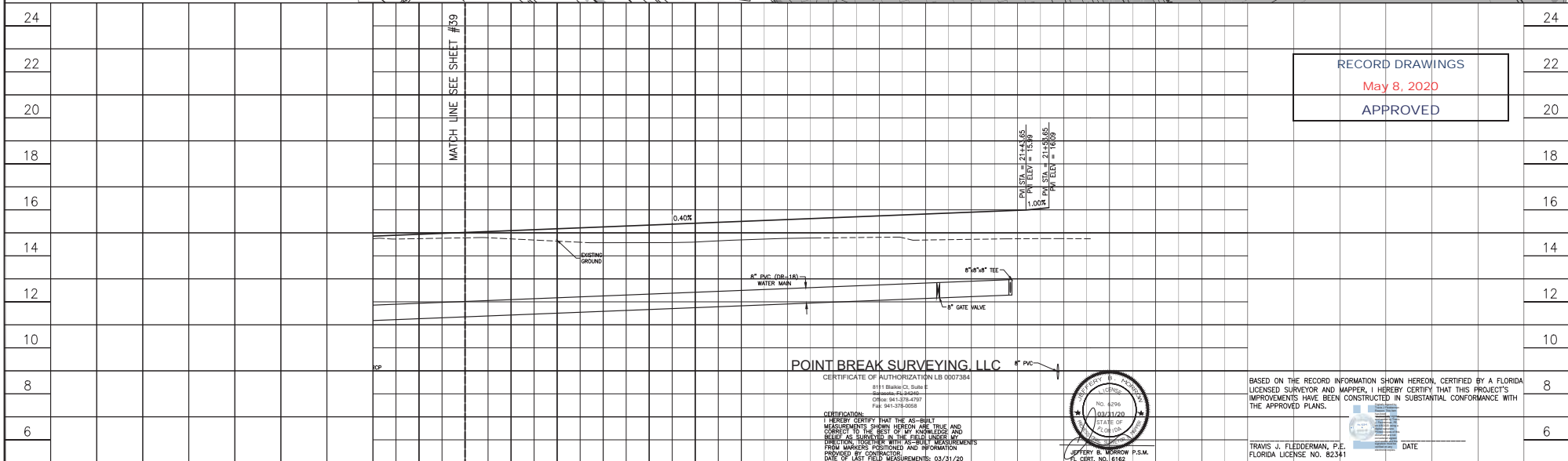
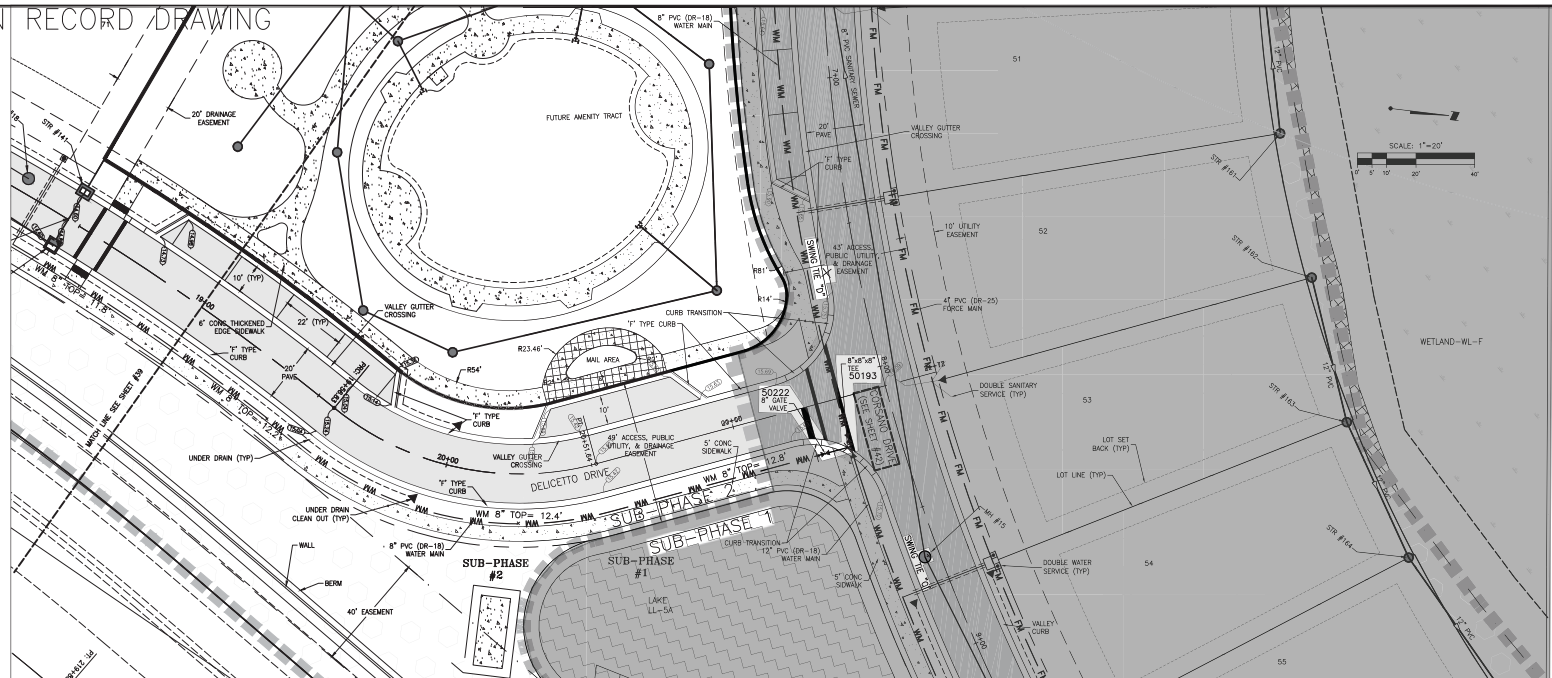
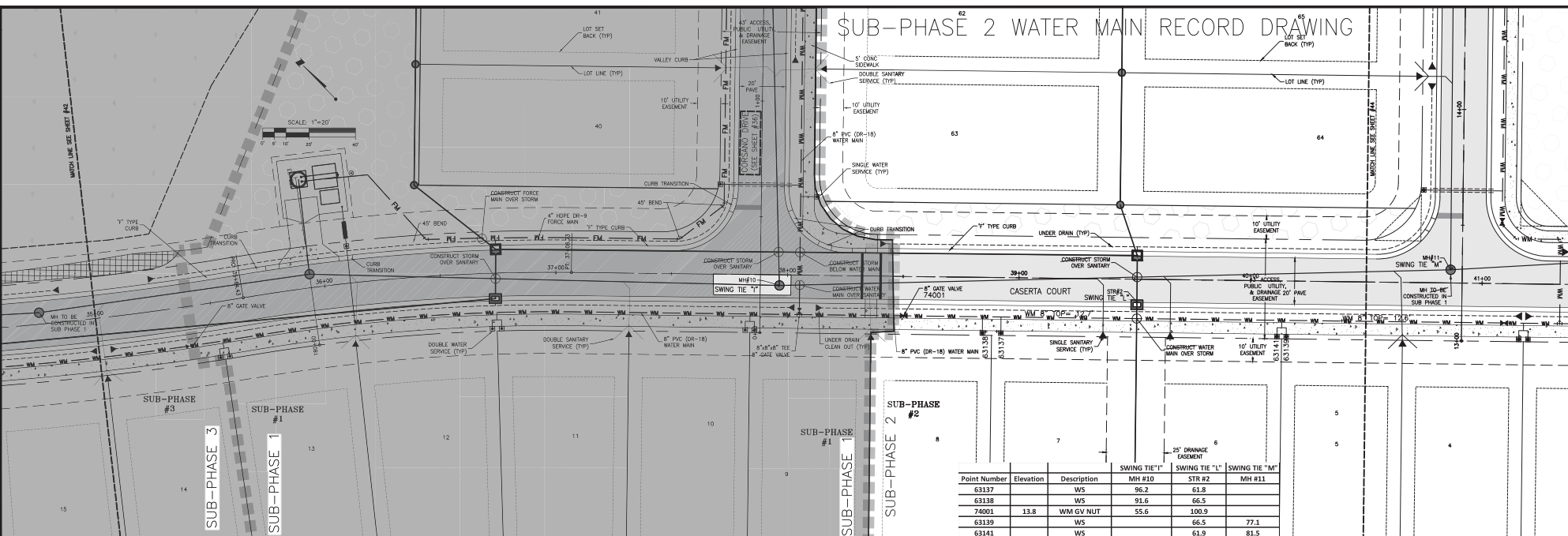


SUB-PHASE 2 WATER MAIN RECORD DRAWING

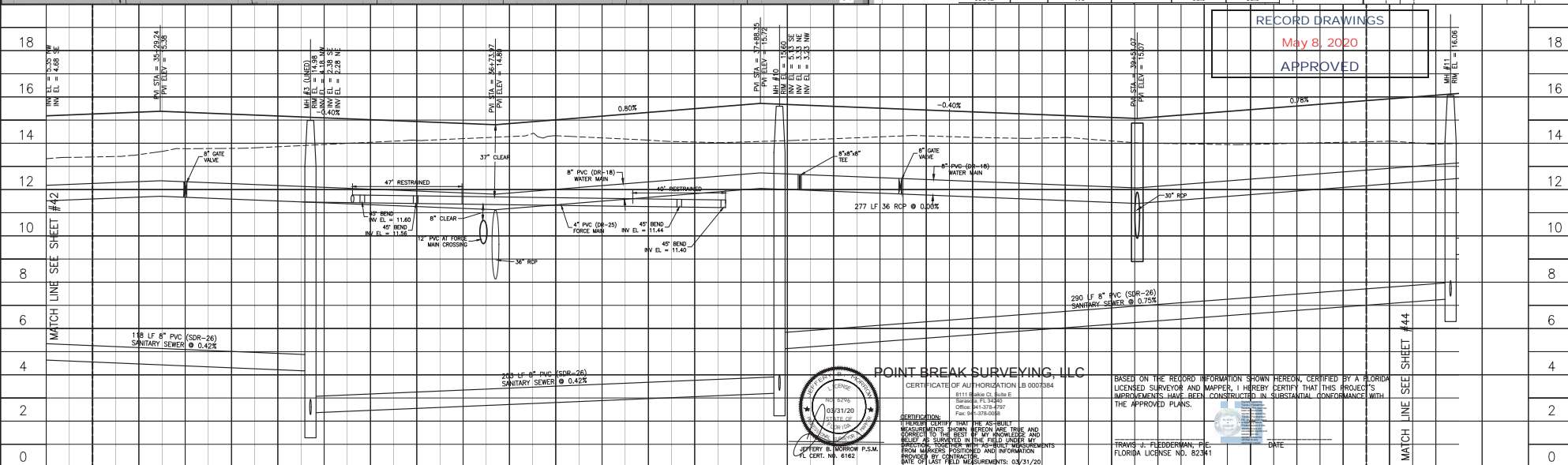
Point Number	Elevation	Description	SWING TIE "C"	SWING TIE "D"
50222	14.2	WM 8" GV NUT	MH #15	SET PK & DISC
50193	11.6	WM 8" X8" TEE	45.9	60.1



										19+00				20+00				21+00				22+00			
										ACTIVITY				INITIALS/EMP. NO.				DATE				DATE			
										DESIGNED BY:								03-2018							
										DRAWN BY:								03-2018							
										CHECKED BY:															
										CONTRACT ADMIN. BY:															
										WM APPROVED BY:															
										DATE				DRAWN BY / EMP. NO.				DESIGNED BY / EMP. NO.				WM APPROVED BY / EMP. NO.			
										03/31/20				JRC/207											
										03/31/19				RJB/115105											



Point Number	Elevation	Description	SWING TIE "T"	SWING TIE "L"	SWING TIE "M"
63137		WS	MH #10	STR #2	MH #11
63138		WS	96.2	61.8	
74001	13.8	WM GV NUT	55.6	100.9	
63139		WS	66.5	77.1	
63141		WS	61.9	81.5	



RECORD DRAWINGS
May 8, 2020
APPROVED



POINT BREAK SURVEYING, LLC
CERTIFICATE OF AUTHORIZATION LB 0007384
8111 Bahia CL, Suite E
Boca Raton, FL 33420
Office: 561-378-4707
Fax: 561-378-0058
DATE OF LAST FIELD MEASUREMENTS: 03/31/20

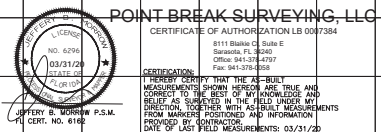
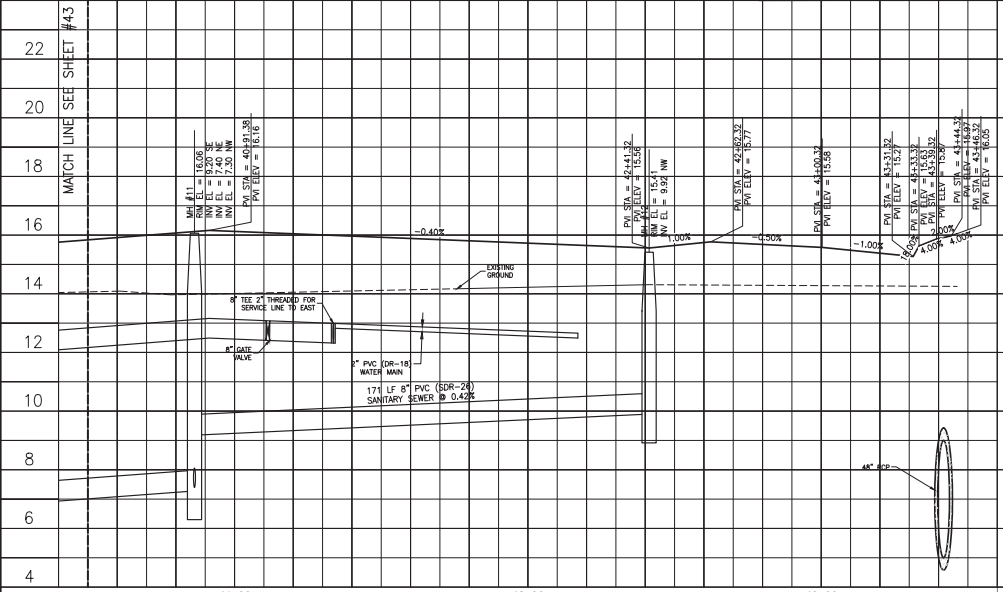
BASED ON THE RECORD INFORMATION SHOWN HEREON, CERTIFIED BY A FLORIDA LICENSED SURVEYOR AND MAPPER, I HEREBY CERTIFY THAT THIS PROJECT'S IMPROVEMENTS HAVE BEEN CONSTRUCTED IN SUBSTANTIAL CONFORMANCE WITH THE APPROVED PLANS.

TRAVIS J. FLEDDERMAN, P.E.
FLORIDA LICENSE NO. 82341

WATER MAIN RECORD DRAWINGS B. REVISED PER CITY COMMENTS DATED 01/29/19 A. REV. NO. REVISION		23/31/20 - RC/007 01/30/19 RSB/115155 DATE DRAWN BY / DATE CHECKED BY / DATE APPROVED BY:	ACTIVITY DESIGNED BY: 03-2018 DRAWN BY: 03-2018 CHECKED BY: CONTRACT ADMIN. BY: WM APPROVED BY:	 6000 Professional Parkway East, Sarasota, FL 34240-6414 Phone: 941-554-0700 • Fax: 941-554-0701 Certificate of Authorization #20710 • www.stantec.com	CLIENT: NEAL COMMUNITIES OF SOUTHWEST FLORIDA, LLC PROJECT: CIELO	DATE: 03-2018 DRAWING SCALE: 1" = 20' ORIGIN REFERENCE FILE NO.: PROJECT NUMBER: 215613459	TITLE: RECORD PLAN AND PROFILE CASERTA COURT 35+00 - 40+50 RECORD PH2 WM 4.3 SHEET NUMBER: 43 of 75
--	--	---	---	---	--	---	--

Point Number	Elevation	Description	SWING TIE "M"		SWING TIE "N"	
			MH #11	MH #12	MH #11	MH #12
42037	14.3	WM 8" GV NUT	33.9	149.8		
42041	14.7	WM BO	140.8	40.5		
63133		WS	42.3	146.5		
63134		WS	45.6	142.1		
63135		WS	140.5	47.1		
63136		WS	136.0	51.2		
74005	12.9	WM 8" TEE	52.2	128.0		

RECORD DRAWINGS			
	May 8, 2020		
	APPROVED		



BASED ON THE RECORD INFORMATION SHOWN HEREON, CERTIFIED BY A FLORIDA
LICENSED SURVEYOR AND MAPPER, I HEREBY CERTIFY THAT THIS PROJECT'S
IMPROVEMENTS HAVE BEEN CONSTRUCTED IN SUBSTANTIAL CONFORMANCE WITH
THE APPROVED PLANS.

TRAVIS J. FLEDDERMAN, P.E.
FLORIDA LICENSE NO. 82341

				ACTIVITY	INITIALS/IMP. NO.	DATE
C	WATER MAIN RECORD DRAWINGS	03/31/20	JRC/007	DESIGNED BY:		03-2018
B	REVISED PER CITY UTILITY COMMENTS	02/12/19	RSB/115155	DRAWN BY:		03-2018
A	REVISED PER CITY COMMENTS DATED 01/28/19	01/30/19	RSB/115155	CHECKED BY:		
APP. NO.	REVISION	DATE	DESIGNED BY / IMP. NO.	CONTRACT ADMIN. BY:		
			DESIGNED BY / IMP. NO.	WAP APPROVED BY:		



The Contractor shall verify and be responsible for all dimensions, DO NOT scale the drawing - any errors or omissions shall be reported to Starlinec without delay. The Copyrights to all designs and drawings are the property of Starlinec. Reproduction or use for any purpose other than that authorized by Starlinec is forbidden.

CLIENT:	NEAL COMMUNITIES OF SOUTHWEST FLORIDA, LLC
PROJECT:	CIELO

DATE:	03-2018
HORIZONTAL SCALE:	1" = 20'
VERTICAL SCALE:	
SHEET: TWP: RGE:	35 38S 19E

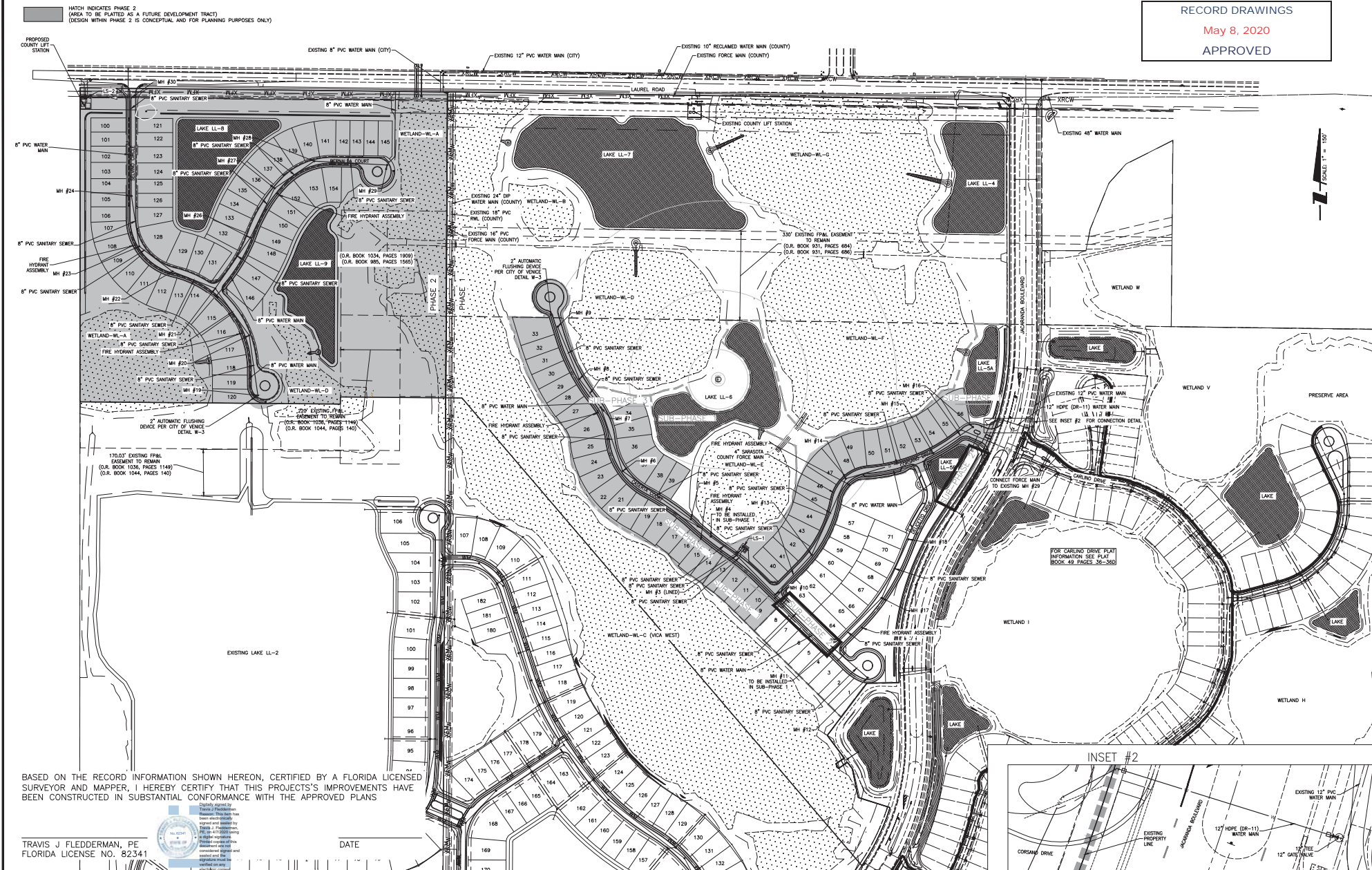
TITLE: RECORD PLAN AND PROFILE CASERTA COURT 40+50 - 40+31.32 FORCE MAIN 100+00 - 102+00		MELANIE DELEWANY SMITH, P.E. FLORIDA LICENSE NO. 78447 PROJECT NUMBER: RECORD WATER 44
CROSS REFERENCE FILE NO.:	PROJECT NUMBER: 215613459	SHEET NUMBER: 44 of 75

RECORD DRAWINGS

May 8, 2020

APPROVED

1" = 150'



BASED ON THE RECORD INFORMATION SHOWN HEREON, CERTIFIED BY A FLORIDA LICENSED SURVEYOR AND MAPPER, I HEREBY CERTIFY THAT THIS PROJECT'S IMPROVEMENTS HAVE BEEN CONSTRUCTED IN SUBSTANTIAL CONFORMANCE WITH THE APPROVED PLANS

TRAVIS J FLEDDERMAN, PE
FLORIDA LICENSE NO. 82341



DATE

RECORD DRAWING

ACTIVITY	DATE
DESIGNED BY:	03-2018
DRAWN BY:	03-2018
CHECKED BY:	
CONTRACT ADMIN. BY:	
WM APPROVED BY:	

CLIENT:	NEAL COMMUNITIES OF SOUTHWEST FLORIDA, LLC
PROJECT:	CIELO SUB-PHASE II

DATE:	03-2018	TITLE:	MASTER WATER AND SEWER PLAN
HORIZONTAL SCALE:	1" = 150'		
VERTICAL SCALE:	1" = 150'		
PROJECT NUMBER:	215613459		
REVISION NUMBER:	34		
REVISION DESCRIPTION:	OF 75		

HATCH INDICATES PHASE 2
(AREA TO BE PLAYED AS A FUTURE DEVELOPMENT TRACT)
(DESIGN WITHIN PHASE 2 IS CONCEPTUAL AND FOR PLANNING PURPOSES ONLY)

RECORD DRAWINGS
May 8, 2020
APPROVED

BASED ON THE RECORD INFORMATION SHOWN HEREON, CERTIFIED BY A FLORIDA LICENSED SURVEYOR AND MAPPER, I HEREBY CERTIFY THAT THIS PROJECT'S IMPROVEMENTS HAVE BEEN CONSTRUCTED IN SUBSTANTIAL CONFORMANCE WITH THE APPROVED PLANS

TRAVIS J FLEDDERMAN, PE
FLORIDA LICENSE NO. 82341



DATE

RECORD DRAWINGS

CLIENT: NEAL COMMUNITIES OF
SOUTHWEST FLORIDA, LLC
PROJECT: CIELO SUB-PHASE 2

TITLE: PLAN AND PROFILE KEY SHEET
DATE: 03-2018
HORIZONTAL SCALE: 1" = 150'
VERTICAL SCALE: 1" = 10'
SHEET: 35 OF 192
CROSS REFERENCE FILE NO: 215613459

RECORD NUMBER: 215613459-04C-814EX
SHEET NUMBER: 35 OF 75

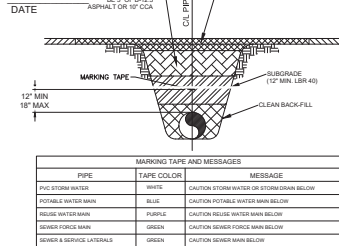
DATE	REVISION	DATE	DESIGNED BY	DATE	ACTIVITY
			03-2018		DESIGNED BY
			03-2018		DRAWN BY
					CHECKED BY
					CONTRACT ADMIN. BY
					WM APPROVED BY

TRENCH NOTES:

- WHERE WATER, REUSE AND/OR SEWER MAINS CROSS WITH LESS THAN EIGHTEEN INCHES (18") VERTICAL CLEARANCE, ONE OF THE FOLLOWING METHODS OF PROTECTION SHALL BE UTILIZED:
 - WHERE A CONFLICT ARISES WITH AN EXISTING SEWER OR REUSE MAIN, THE PROPOSED WATER MAIN SHALL BE A MINIMUM OF TWENTY FEET (20') OF AWWA C-900 DR-14 PVC OR CL-31 D.L.P., CENTERED ON THE POINT OF CROSSING.
 - WHERE A CONFLICT ARISES WITH AN EXISTING WATER OR REUSE MAIN, THE PROPOSED SEWER MAIN SHALL BE A MINIMUM OF TWENTY FEET (20') OF AWWA C-900 DR-14 PVC, CENTERED ON THE POINT OF CROSSING.
 - WHERE A CONFLICT ARISES WITH PROPOSED WATER, REUSE AND/OR SEWER MAINS, THE WATER AND REUSE MAIN SHALL BE A MINIMUM OF TWENTY FEET (20') OF AWWA C-900 DR-14 PVC OR CL-31 D.L.P., WHILE THE SEWER MAIN SHALL BE A MINIMUM OF TWENTY FEET (20') OF AWWA C-900 DR-14 PVC, CENTERED ON THE POINT OF CROSSING.
- WHEN A WATER MAIN PARALLELS A WASTEWATER LINE, A HORIZONTAL SEPARATION OF AT LEAST TEN FEET (10') FROM OUTSIDE EDGE TO OUTSIDE EDGE SHOULD BE MAINTAINED, WHEN SEPARATED BY LESS THAN 10 FEET (10') HORIZONTALLY THE WATER MAIN SHALL BE AWWA C-900 DR-14 PVC, CLASS-51 D.L.P. AND SEWER LINES SHALL BE AWWA C-900 DR-14 PVC. JOINTS SHALL BE STAGGERED TO MINIMIZE JOINT SEPARATION.
- WHEN A WATER MAIN OR WASTEWATER LINE PARALLELS A REUSE MAIN, A HORIZONTAL SEPARATION OF AT LEAST FIVE FEET (5') CENTER OF PIPE TO CENTER OF PIPE SHOULD BE MAINTAINED, IN NO CASE SHALL THE HORIZONTAL SEPARATION BE LESS THAN THREE FEET (3') FROM OUTSIDE EDGE OF PIPE TO OUTSIDE EDGE OF PIPE.
- TRENCH SHALL BE BRACED OR SHORED IN ACCORDANCE WITH THE "FLORIDA TRENCH & SAFETY ACT", SIDE, MAXIMUM.
- WIDTH OF TRENCH BOTTOM SHALL BE OUTSIDE DIAMETER OF PIPE PLUS TWELVE INCHES (12") EACH SIDE, MAXIMUM.
- CONTRACTOR SHALL PLACE METALLIC BURIAL IDENTIFICATION TAPE DIRECTLY ABOVE WATER MAIN IN CONFORMANCE WITH COUNTY CODE.
- ALL BELL POINT HOLES SHALL BE FILLED WITH COARSE SAND OR OTHER SATISFACTORY GRANULAR MATERIAL AT TIME WELL POINTS ARE PLACED.
- DISCHARGE FROM DE-WATERING OPERATION SHALL BE DEPOSITED OF IN SUCH A MANNER THAT IT SHALL NOT INTERFERE WITH THE NORMAL DRAINAGE OF THE AREA IN WHICH THE WORK IS BEING PERFORMED. CREATE A PUBLIC NUISANCE OR FORM PONDING. THE OPERATIONS SHALL NOT CAUSE INJURY TO ANY PERSON OR THE WORK COMPLETED, OR IN PROGRESS, OR TO THE SURFACE OF STREETS, OR TO PRIVATE PROPERTY.
- THE PROPOSED DE-WATERING METHOD(S) AND SCHEDULE SHALL BE COORDINATED WITH THE UTILITY AND/OR THE ENGINEER OF RECORD AND OTHER NECESSARY REGULATORY AGENCIES PRIOR TO CONSTRUCTION. ADDITIONALLY, WHERE PRIVATE PROPERTY SHALL BE INVOLVED, ADVANCE PERMISSION SHALL BE OBTAINED BY THE CONTRACTOR AND/OR DEVELOPER.
- THE CONTRACTOR SHALL PROVIDE SOIL COMPACTION TESTING IN ACCORDANCE WITH THE PROJECT SPECIFICATIONS. IF THE SPECIFICATIONS DO NOT ADDRESS COMPACTION TESTS, THEY SHALL BE DONE IN ACCORDANCE WITH CITY OF VENICE UNIFORM WATER AND WASTEWATER SYSTEM AND REUSE CODE, LATEST EDITION. ALL SOIL COMPACTION TESTS RESULTS SHALL BE SUBMITTED TO THE ENGINEER OF RECORD.
- ALL CONSTRUCTION SHALL ADHERE TO CITY OF VENICE STANDARD DETAILS.
- ALL SANITARY SEWER / FORCE MAIN CONSTRUCTION SHALL ADHERE TO SARASOTA COUNTY DETAILS.

BASED ON THE THE RECORD INFORMATION SHOWN HEREON, CERTIFIED BY A FLORIDA LICENSED SURVEYOR AND MAPPER, I HEREBY CERTIFY THAT THIS PROJECT'S IMPROVEMENTS HAVE BEEN CONSTRUCTED IN SUBSTANTIAL CONFORMANCE WITH THE APPROVED PLANS

TRAVIS J FLEDDERMAN, PE
FLORIDA LICENSE NO. 823411



- COPPERHEAD TRACING WIRE #12 AWG OR EQUAL SHALL BE ATTACHED TO TOP OF PIPE AT 20' INTERVALS ON ALL RECLAIMED WATER FORCE OR POTABLE WATER MAINS. IT SHALL BE COLOR CODED TO REFLECT WHAT THE PIPE CARRIES. BLUE = WATER, GREEN = REUSE, PURPLE = SEWER, OTHERWISE APPROVED.
- INSTALLATION OF PIPE SHALL BE IN CONFORMANCE WITH MANUFACTURER'S RECOMMENDATIONS.
- CONTRACT UTILITIES OF SLODS WITH SEPARATION AS PER CITY DETAILS.
- ALL UTILITIES (PUBLIC & PRIVATE) THAT CROSS A DITCH/VALE SHALL BE 30" MIN. BELOW THE ACTUAL/DESIGN BOTTOM OF CONFORMANCE.
- MARKING TAPE SHALL BE 3" WIDE (MIN) DETECTABLE UNDERGROUND WARNING TAPE. INSTALL CENTERED DIRECTLY OVER THE PIPE.
- SEE A-4 FOR GRAVITY SEWER PIPE TRENCH DETAIL.

UTILITY PIPE TRENCH DETAIL

N.T.S.

TAPPING SLEEVE & VALVE DETAIL

N.T.S.

VALVE BOX DETAIL

N.T.S.

THE FOLLOWING TABLES SHOULD BE USED TO DETERMINE THE LENGTH OF PIPE IN FEET FROM EACH BEND, TEE, REDUCER, VALVE, END OR FITTING THAT SHALL BE RESTRAINED. CALCULATIONS ARE BASED ON ISMA IRON SALES, INC. RESTRAINT LENGTH CALCULATION V7.1.5. THE DESIGN CRITERIA FOR THESE CALCULATIONS ARE AS FOLLOWS:

TRENCH CONDITION (ANSI/AWS C150/A21.500) SOIL CLASSIFICATION (ASTM STANDARD D4457) DESIGN PRESSURE (PSI) SAFETY FACTOR TYPICAL PIPE LENGTH (FT.)	4 3M 150
1	4
2	3
3	2
4	1
5	0

NOTES: 1. VERTICAL OFFSET CALCULATIONS ASSUME 30% OF COVER ON BOTH THE UPPER & LOWER SIDES OF VERTICAL OFFSET.

NOMINAL DIAMETER (IN.)	RESTRAINED LENGTH IN FEET
4	90'
6	45'
8	30'
10	22 1/2'
12	11 1/4'

NOMINAL DIAMETER (IN.)	RESTRAINED LENGTH IN FEET
4	90'
6	45'
8	30'
10	22 1/2'
12	11 1/4'

NOMINAL DIAMETER (IN.)	RESTRAINED LENGTH IN FEET
4	90'
6	45'
8	30'
10	22 1/2'
12	11 1/4'

NOMINAL DIAMETER (IN.)	RESTRAINED LENGTH IN FEET
4	90'
6	45'
8	30'
10	22 1/2'
12	11 1/4'

NOMINAL DIAMETER (IN.)	RESTRAINED LENGTH IN FEET
4	90'
6	45'
8	30'
10	22 1/2'
12	11 1/4'

NOMINAL DIAMETER (IN.)	RESTRAINED LENGTH IN FEET
4	90'
6	45'
8	30'
10	22 1/2'
12	11 1/4'

NOMINAL DIAMETER (IN.)	RESTRAINED LENGTH IN FEET
4	90'
6	45'
8	30'
10	22 1/2'
12	11 1/4'

NOMINAL DIAMETER (IN.)	RESTRAINED LENGTH IN FEET
4	90'
6	45'
8	30'
10	22 1/2'
12	11 1/4'

CITY OF VENICE ENGINEERING DEPARTMENT 401 WEST VENICE AVE. VENICE FL 34285 (941) 488-2620 FAX (941) 480-3031	UTILITIES - GENERAL UTILITY PIPE TRENCH	DATE JAN. 2019 SHEET NO. U-1
---	---	---------------------------------------

CITY OF VENICE ENGINEERING DEPARTMENT 401 WEST VENICE AVE. VENICE FL 34285 (941) 488-2620 FAX (941) 480-3031	UTILITIES - GENERAL TAPPING SLEEVE & VALVE	DATE JAN. 2019 SHEET NO. U-3
---	--	---------------------------------------

CITY OF VENICE ENGINEERING DEPARTMENT 401 WEST VENICE AVE. VENICE FL 34285 (941) 488-2620 FAX (941) 480-3031	UTILITIES - GENERAL VALVE BOX	DATE JAN. 2019 SHEET NO. U-4
---	----------------------------------	---------------------------------------

CITY OF VENICE ENGINEERING DEPARTMENT 401 WEST VENICE AVE. VENICE FL 34285 (941) 488-2620 FAX (941) 480-3031	UTILITIES - GENERAL PIPE FITTINGS	DATE JAN. 2019 SHEET NO. U-5
---	--------------------------------------	---------------------------------------

CITY OF VENICE ENGINEERING DEPARTMENT 401 WEST VENICE AVE. VENICE FL 34285 (941) 488-2620 FAX (941) 480-3031	UTILITIES - GENERAL PIPE MATERIAL SCHEDULE	DATE JAN. 2019 SHEET NO. U-6
---	---	---------------------------------------

CITY OF VENICE ENGINEERING DEPARTMENT 401 WEST VENICE AVE. VENICE FL 34285 (941) 488-2620 FAX (941) 480-3031	UTILITIES - GENERAL PIPE FITTINGS & MATERIAL	DATE JAN. 2019 SHEET NO. U-6
---	---	---------------------------------------

CITY OF VENICE ENGINEERING DEPARTMENT 401 WEST VENICE AVE. VENICE FL 34285 (941) 488-2620 FAX (941) 480-3031	UTILITIES - GENERAL PIPE FITTINGS & MATERIAL	DATE JAN. 2019 SHEET NO. U-6
---	---	---------------------------------------

CITY OF VENICE ENGINEERING DEPARTMENT 401 WEST VENICE AVE. VENICE FL 34285 (941) 488-2620 FAX (941) 480-3031	UTILITIES - GENERAL PIPE FITTINGS & MATERIAL	DATE JAN. 2019 SHEET NO. U-6
---	---	---------------------------------------

CITY OF VENICE ENGINEERING DEPARTMENT 401 WEST VENICE AVE. VENICE FL 34285 (941) 488-2620 FAX (941) 480-3031	UTILITIES - GENERAL PIPE FITTINGS & MATERIAL	DATE JAN. 2019 SHEET NO. U-6
---	---	---------------------------------------

CITY OF VENICE ENGINEERING DEPARTMENT 401 WEST VENICE AVE. VENICE FL 34285 (941) 488-2620 FAX (941) 480-3031	UTILITIES - GENERAL PIPE FITTINGS & MATERIAL	DATE JAN. 2019 SHEET NO. U-6
---	---	---------------------------------------

CITY OF VENICE ENGINEERING DEPARTMENT 401 WEST VENICE AVE. VENICE FL 34285 (941) 488-2620 FAX (941) 480-3031	UTILITIES - GENERAL PIPE FITTINGS & MATERIAL	DATE JAN. 2019 SHEET NO. U-6
---	---	---------------------------------------

CITY OF VENICE ENGINEERING DEPARTMENT 401 WEST VENICE AVE. VENICE FL 34285 (941) 488-2620 FAX (941) 480-3031	UTILITIES - GENERAL PIPE FITTINGS & MATERIAL	DATE JAN. 2019 SHEET NO. U-6
---	---	---------------------------------------

CITY OF VENICE ENGINEERING DEPARTMENT 401 WEST VENICE AVE. VENICE FL 34285 (941) 488-2620 FAX (941) 480-3031	UTILITIES - GENERAL PIPE FITTINGS & MATERIAL	DATE JAN. 2019 SHEET NO. U-6
---	---	---------------------------------------

CITY OF VENICE ENGINEERING DEPARTMENT 401 WEST VENICE AVE. VENICE FL 34285 (941) 488-2620 FAX (941) 480-3031	UTILITIES - GENERAL PIPE FITTINGS & MATERIAL	DATE JAN. 2019 SHEET NO. U-6
---	---	---------------------------------------

CITY OF VENICE ENGINEERING DEPARTMENT 401 WEST VENICE AVE. VENICE FL 34285 (941) 488-2620 FAX (941) 480-3031	UTILITIES - GENERAL PIPE FITTINGS & MATERIAL	DATE JAN. 2019 SHEET NO. U-6
---	---	---------------------------------------

CITY OF VENICE ENGINEERING DEPARTMENT 401 WEST VENICE AVE. VENICE FL 34285 (941) 488-2620 FAX (941) 480-3031	UTILITIES - GENERAL PIPE FITTINGS & MATERIAL	DATE JAN. 2019 SHEET NO. U-6
---	---	---------------------------------------

CITY OF VENICE ENGINEERING DEPARTMENT 401 WEST VENICE AVE. VENICE FL 34285 (941) 488-2620 FAX (941) 480-3031	UTILITIES - GENERAL PIPE FITTINGS & MATERIAL	DATE JAN. 2019 SHEET NO. U-6
---	---	---------------------------------------

CITY OF VENICE ENGINEERING DEPARTMENT 401 WEST VENICE AVE. VENICE FL 34285 (941) 488-2620 FAX (941) 480-3031	UTILITIES - GENERAL PIPE FITTINGS & MATERIAL	DATE JAN. 2019 SHEET NO. U-6
---	---	---------------------------------------

CITY OF VENICE ENGINEERING DEPARTMENT 401 WEST VENICE AVE. VENICE FL 34285 (941) 488-2620 FAX (941) 480-3031	UTILITIES - GENERAL PIPE FITTINGS & MATERIAL	DATE JAN. 2019 SHEET NO. U-6
---	---	---------------------------------------

CITY OF VENICE ENGINEERING DEPARTMENT 401 WEST VENICE AVE. VENICE FL 34285 (941) 488-2620 FAX (941) 480-3031	UTILITIES - GENERAL PIPE FITTINGS & MATERIAL	DATE JAN. 2019 SHEET NO. U-6
---	---	---------------------------------------

CITY OF VENICE ENGINEERING DEPARTMENT 401 WEST VENICE AVE. VENICE FL 34285 (941) 488-2620 FAX (941) 480-3031	UTILITIES - GENERAL PIPE FITTINGS & MATERIAL	DATE JAN. 2019 SHEET NO. U-6
---	---	---------------------------------------

CITY OF VENICE ENGINEERING DEPARTMENT 401 WEST VENICE AVE. VENICE FL 34285 (941) 488-2620 FAX (941) 480-3031	UTILITIES - GENERAL PIPE FITTINGS & MATERIAL	DATE JAN. 2019 SHEET NO. U-6
---	---	---------------------------------------

CITY OF VENICE ENGINEERING DEPARTMENT 401 WEST VENICE AVE. VENICE FL 34285 (941) 488-2620 FAX (941) 480-3031	UTILITIES - GENERAL PIPE FITTINGS & MATERIAL	DATE JAN. 2019 SHEET NO. U-6
---	---	---------------------------------------

CITY OF VENICE ENGINEERING DEPARTMENT 401 WEST VENICE AVE. VENICE FL 34285 (941) 488-2620 FAX (941) 480-3031	UTILITIES - GENERAL PIPE FITTINGS & MATERIAL	DATE JAN. 2019 SHEET NO. U-6
---	---	---------------------------------------

CITY OF VENICE ENGINEERING DEPARTMENT 401 WEST VENICE AVE. VENICE FL 34285 (941) 488-2620 FAX (941) 480-3031	UTILITIES - GENERAL PIPE FITTINGS & MATERIAL	DATE JAN. 2019 SHEET NO. U-6
---	---	---------------------------------------

CITY OF VENICE ENGINEERING DEPARTMENT 401 WEST VENICE AVE. VENICE FL 34285 (941) 488-2620 FAX (941) 480-3031	UTILITIES - GENERAL PIPE FITTINGS & MATERIAL	DATE JAN. 2019 SHEET NO. U-6
---	---	---------------------------------------

CITY OF VENICE ENGINEERING DEPARTMENT 401 WEST VENICE AVE. VENICE FL 34285 (941) 488-2620 FAX (941) 480-3031	UTILITIES - GENERAL PIPE FITTINGS & MATERIAL	DATE JAN. 2019 SHEET NO. U-6
---	---	---------------------------------------

RECORD DRAWINGS
May 8, 2020
APPROVED

RESTRAINED JOINT TABLES FOR FORCE MAIN PIPES

S-W029

RECORD DRAWING	DESIGNED BY:	DRAWN BY:	CHECKED BY:	CONTRACT ADMIN. BY:	DATE
					2018-02
					2018-02

REVISION	DATE	BY	DESCRIPTION
1			
2			
3			
4			
5			
6			
7			
8			
9			
10			
11			
12			
13			
14			
15			
16			
17			
18			
19			
20			
21			
22			
23			
24			
25			
26			
27			
28			
29			
30			
31			
32			
33			
34			
35			
36			
37			
38			
39			
40			
41			
42			
43			
44			
45			
46			
47			
48			
49			
50			
51			
52			
53			
54			
55			
56			
57			
58			
59			
60			
61			
62			
63			
64			
65			
66			
67			
68			
69			
70			
71			
72			
73			
74			
75			
76			
77			
78			
79			
80			
81			
82			
83			
84			
85			
86			
87			
88			
89			
90			
91			
92			
93			
94			
95			
96			
97			
98			
99			
100			

