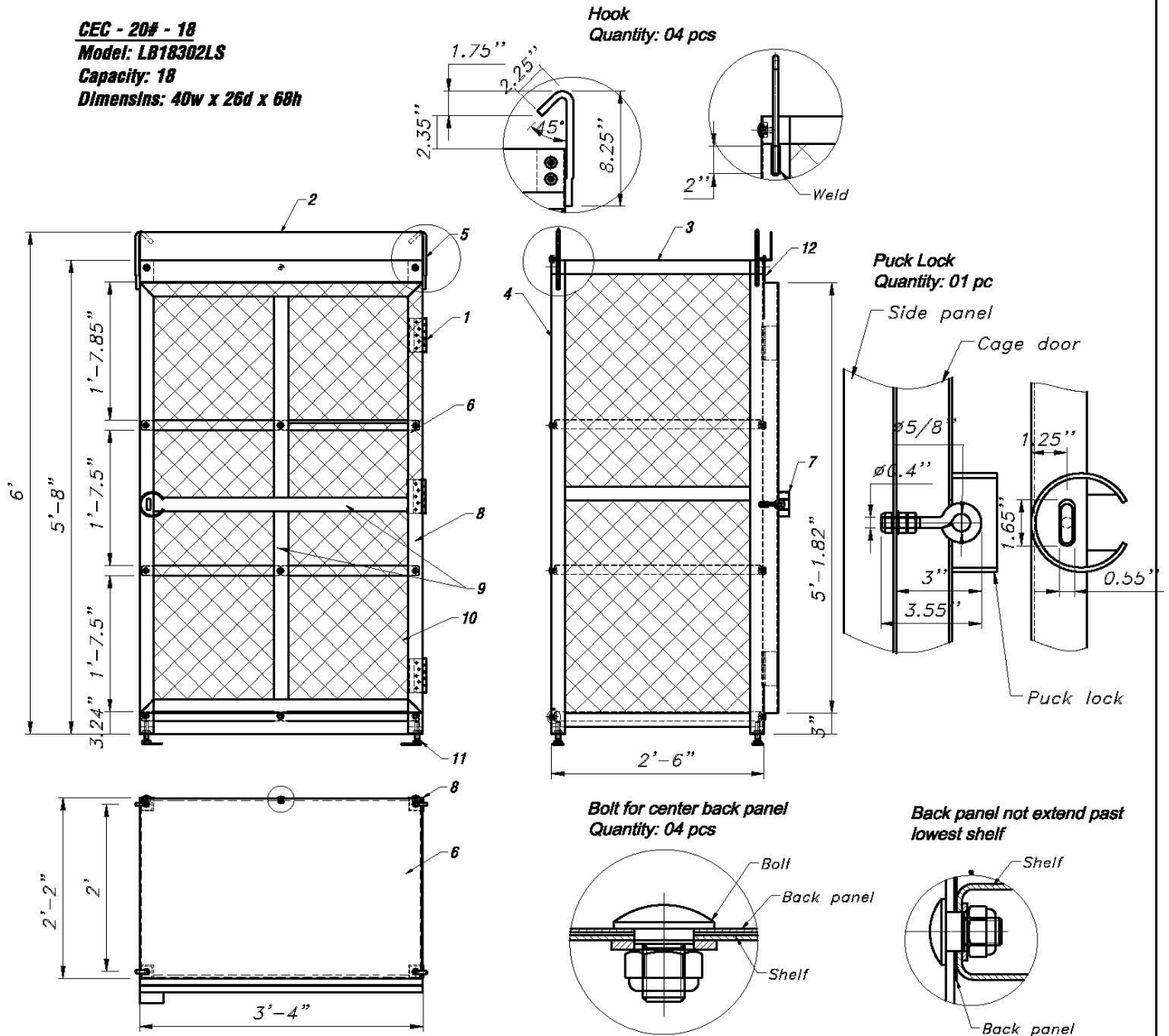

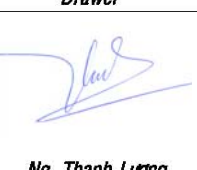


**CEC - 20# - 18**  
**Model: LB18302LS**  
**Capacity: 18**  
**Dimensions: 40w x 26d x 68h**



12	Square neck bolt		24	Steel
11	Leveller		4	Steel
10	Trellis			Steel thickness 13 Ga
9	Backing			Steel sheet thickness 11 Ga
8	Framed stile - angle bar 2"x2"		4	Steel sheet thickness 11 Ga
7	Puck lock		1	Steel sheet thickness 11 Ga
6	Solid shelf 40w x 26 d		3	Steel galvanned sheet thickness 14 Ga
5	Hook		4	Round bar, Ø0.472"
4	Back panel 40w x 66 13/32 h		1	Steel sheet thickness 21 Ga
3	Top panel 40w x 26 d		1	Steel sheet thickness 21 Ga
2	Sign bar 40w		1	Steel sheet thickness 13 Ga
1	Sheet hinge		3	Steel
ITEM	DESCRIPTION	PART No.	QTY	MATERIAL

Director	Drawer	CAGE CEC-20#-18 (44w x 30d x 68h)
 Nguyễn Văn Thắng	 Ng. Thanh Lương	TAY NINH MECHANICAL COMPANY