

LAUREL ROAD

IN VENICE, FLORIDA

Presented by:
THE ECONOMIC STIMULUS WORKING GROUP



LAUREL ROAD

IN VENICE, FLORIDA

HISTORY OF THE ECONOMIC STIMULUS WORKING GROUP

Successful Public Private Partnerships

Substantial experience building infrastructure, improving mobility and connectivity

History of completing projects ahead of schedule & saving millions of taxpayer dollars



Key members of NCP include: Pat Neal and Dale Weidemiller of Neal Communities, Hugh McGuire, Esquire, of Harrison, Kirkland, Pratt, Chulock and McGuire, P.A., Dan Barwick of deMorgan Homes, Carlos Beruff of Medallion Homes, Britt Williams of Bruce Williams Homes, and Frank Herold of Williams and Herold Communities.

US Highway 301 in Manatee County

Budgeted for \$32 MM

Built for \$18.8 MM

\$21MM with change orders





LAUREL ROAD

IN VENICE, FLORIDA

EXAMPLES OF SUCCESSFUL PUBLIC PRIVATE PARTNERSHIPS



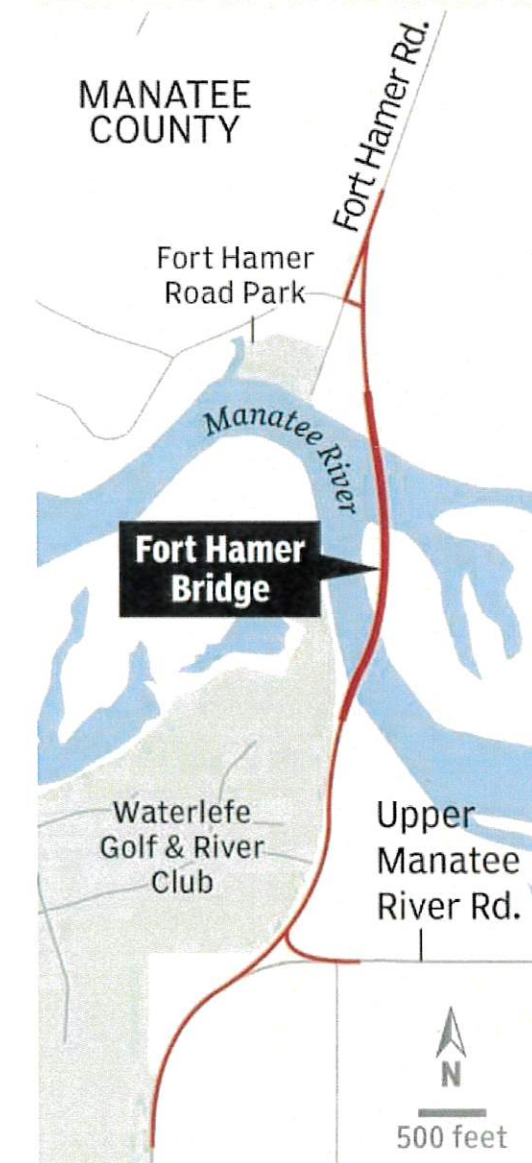
Construction in Progress



Bridge Opening



Fort Hamer Bridge Project (109 years in creation)





LAUREL ROAD

IN VENICE, FLORIDA

EXAMPLES OF SUCCESSFUL PUBLIC PRIVATE PARTNERSHIPS



Completed Honore Avenue

Honore Avenue Extension

(3.2 miles in Manatee County)

\$6 Million Under Original Estimate



Ribbon Cutting



LAUREL ROAD

IN VENICE, FLORIDA

EXAMPLES OF SUCCESSFUL PUBLIC PRIVATE PARTNERSHIPS



Toledo Blade Boulevard: 30% Under Budget

Toledo Blade Boulevard

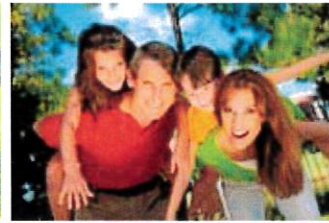
Benderson Development

Neal Communities

Sarasota and Charlotte Counties

City of North Port

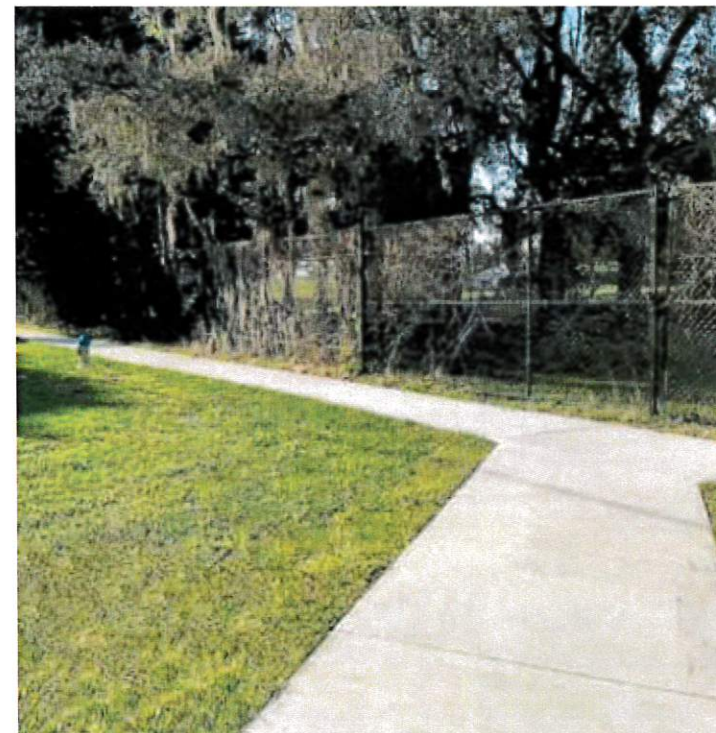




LAUREL ROAD

IN VENICE, FLORIDA

EXAMPLES OF SUCCESSFUL PUBLIC PRIVATE PARTNERSHIPS

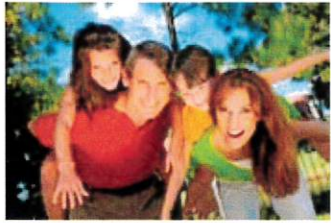


Bay Street Sidewalk in Sarasota County

- Required to build a sidewalk along River Road adjacent to Grand Palm, which would have been immediately demolished by the construction of the new River Road Regional Interstate Connector
- Creative thinking by government resulted in PPP to build sidewalk along Bay Street instead of River Road because of community's safety concerns
- County initially budgeted \$1.294 million
- Neal completed it for \$304,000
- Completed just 2 months after receiving approval from Sarasota BOCC
- **Through the PPP, county was able to save taxpayers nearly 75% of the estimated cost, which can be used toward other future projects**

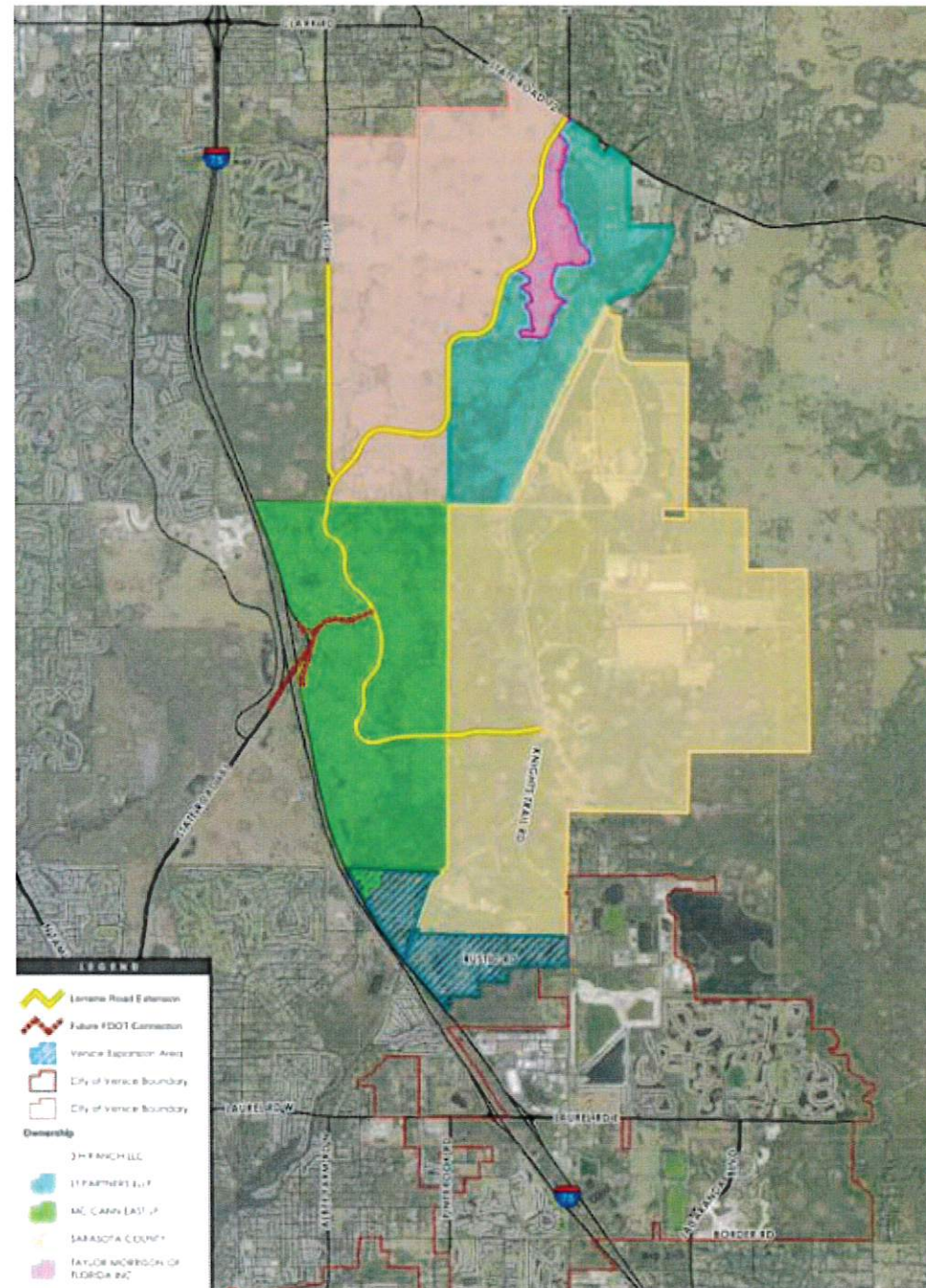


- Neal Communities
- Manatee County
- Manatee County School Board
- Project elements include urgency in time (school opening), taxpayer savings, imminent domain, environmental permitting and coordinating with various agencies



LAUREL ROAD IN VENICE, FLORIDA

EXAMPLES OF SUCCESSFUL PUBLIC PRIVATE PARTNERSHIPS

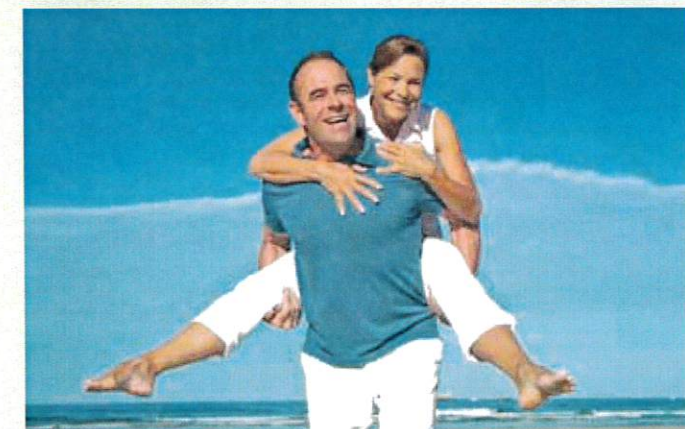


The Missing Link in Sarasota

Sarasota Co. processing Comprehensive Plan Amendment creating a North-South Connector east of I-75 from Clark Road to Knight's Trail

Coordinating w/ entities including:

- Sarasota County
- FDOT
- Sarasota Manatee MPO
- Various landowners to design, permit, and construct roadway expecting to result in taxdollar savings





LAUREL ROAD

IN VENICE, FLORIDA

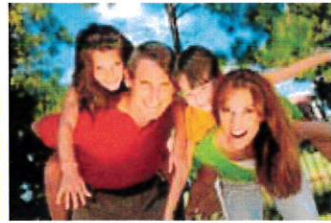
SCOPE

Widening of Laurel Road from two to four lanes between Knights Trail Road and Jacaranda Boulevard - About 1.5 miles



Laurel Road

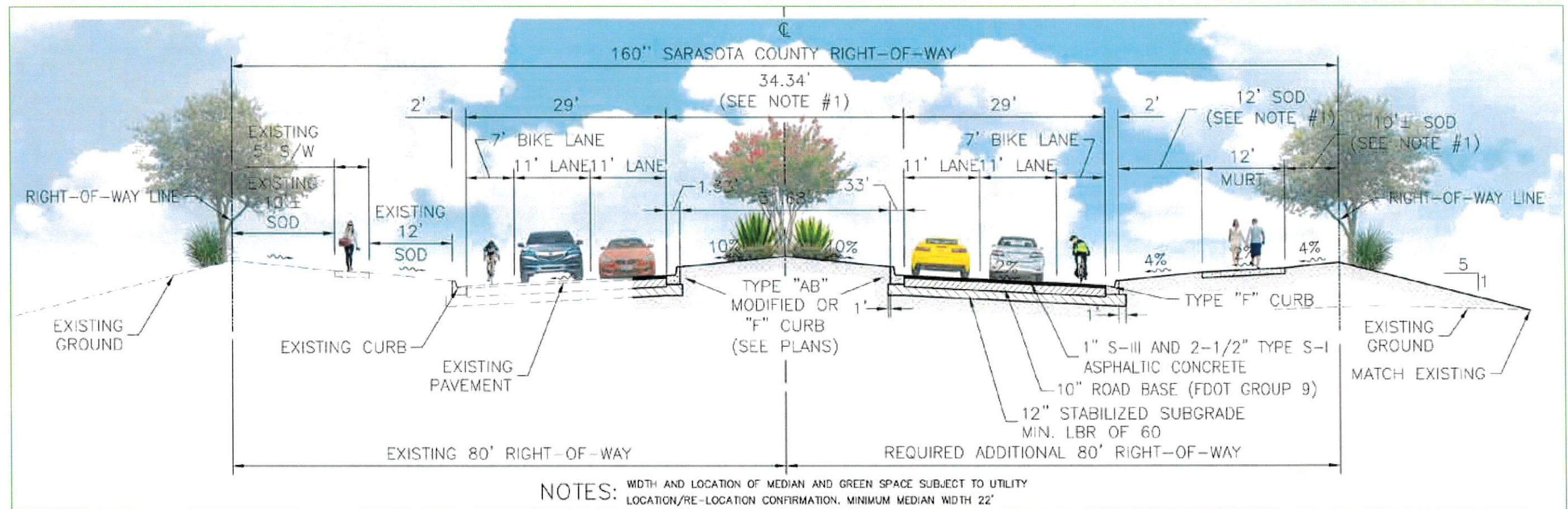




LAUREL ROAD

IN VENICE, FLORIDA

TYPICAL LAUREL ROAD DESIGN SECTION

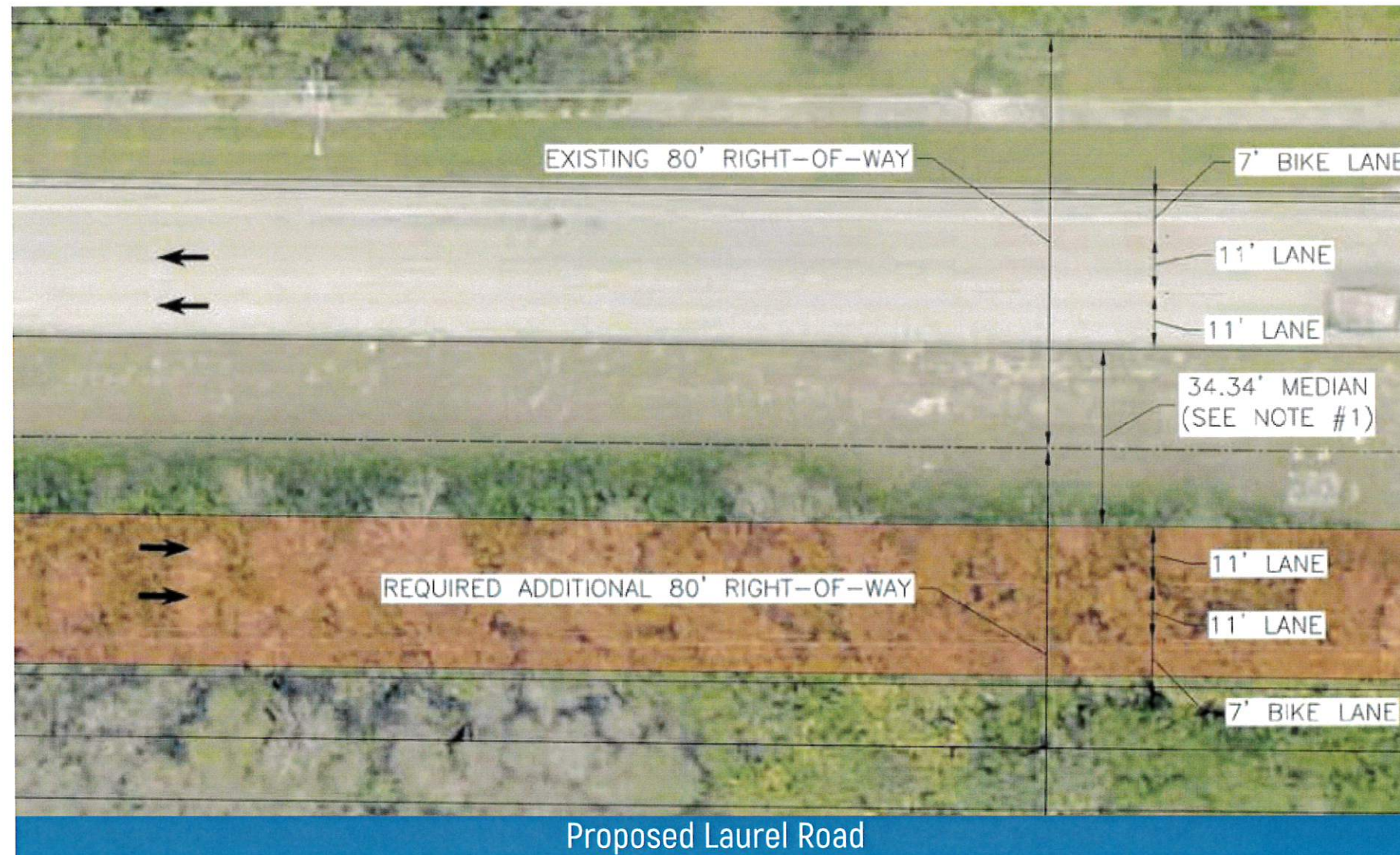




LAUREL ROAD

IN VENICE, FLORIDA

RIGHT-OF-WAY NEEDS



Existing Laurel Road



LAUREL ROAD

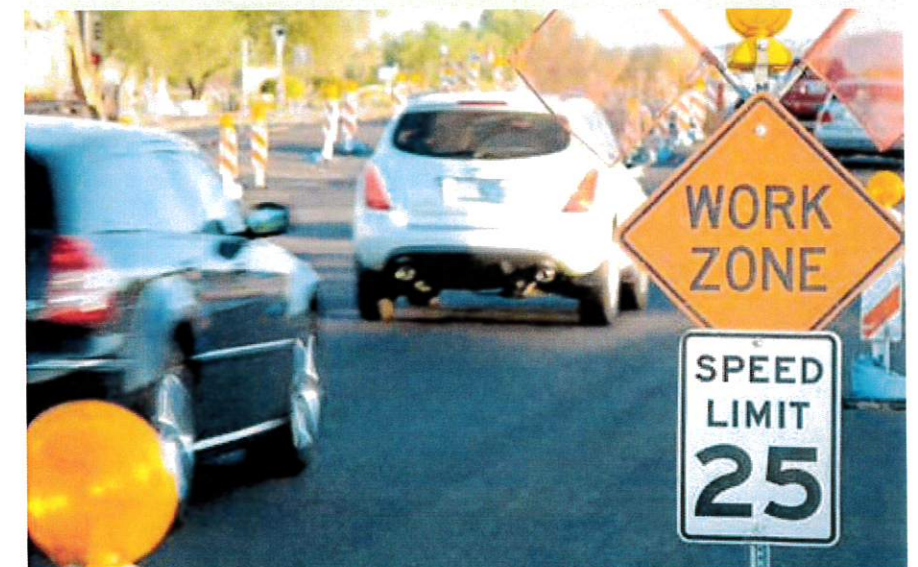
IN VENICE, FLORIDA

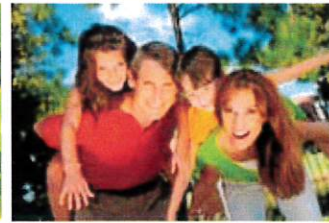
EXPLORING POTENTIAL FUNDING SOURCES



Developing options for financing construction once road is 30% designed which may include:

- Impact/ Mobility Fees
- Economic Development Funds
- State Infrastructure Bank
- CIG-P (County Incentive Grant Program)
- Direct Appropriation from line 1989A (primary gas tax)
- Surtax #4 (November 2022)
- Municipal Service Benefit District





LAUREL ROAD

IN VENICE, FLORIDA

IN SUMMARY

- Expands the Roadway & Multi-Modal Network
- Addresses Long Term Mobility / Transportation Needs
- Shows forward thinking to improve infrastructure to meet future needs
- Saves taxpayer money
- Extremely cost effective
- Promotes safety
- Connects neighborhoods



The next steps to move forward with the project enhancing and expanding Laurel Road:

- Coordinate with Sarasota County to prioritize the widening of Laurel Road
- Authorize Sarasota County to enter into a Public-Private-Partnership to move forward in design up to \$400,000 and to create a reimbursement agreement
- Authorize Sarasota County to spend additional funds that may become available for the completion of Laurel Road