

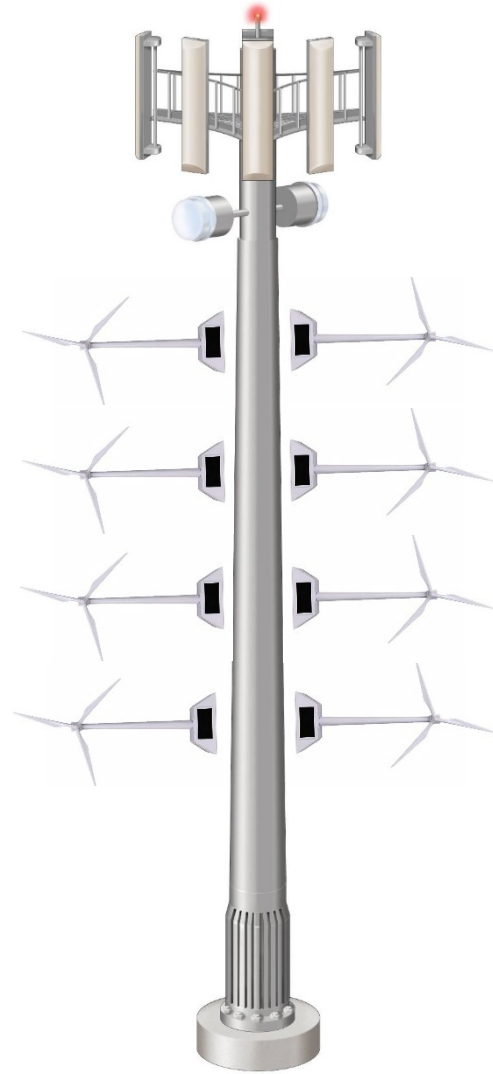
**Sophia Burns, Director of IT**

**Christophe St. Luce, Asst. Dir of IT**

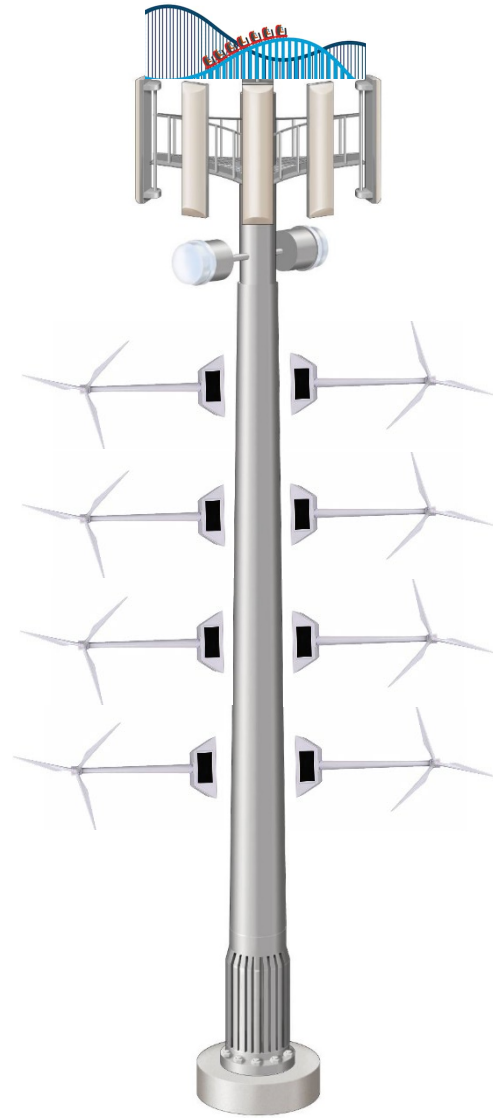
# The 8G West Coast Tower



**With optional wind  
turbines**



**And optional roller  
coaster**



# We will create a tourist attraction!

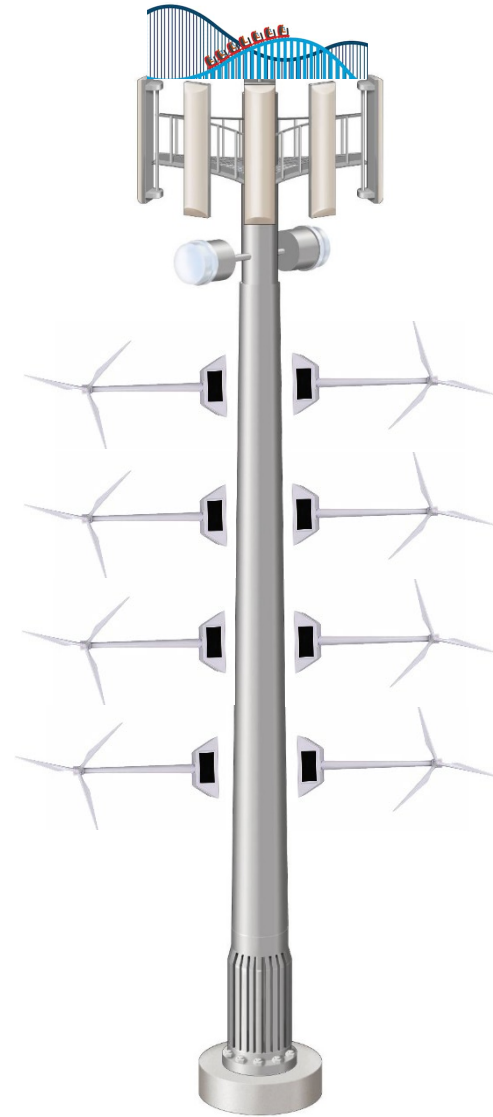


**It will stand out!**  
**As shown next to the**  
**Empire State Bldg.**

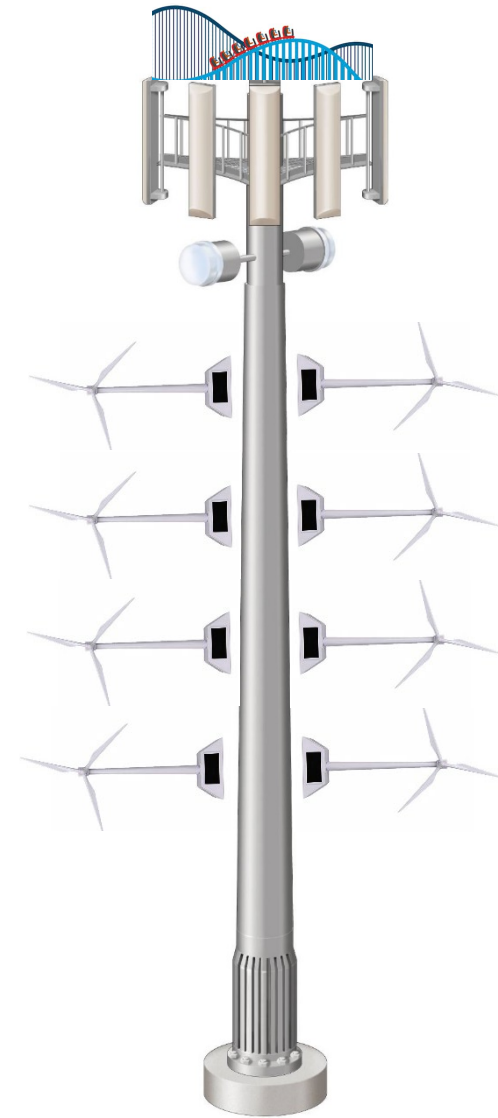
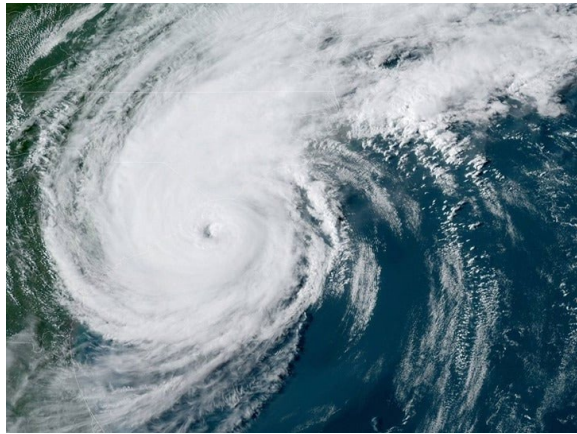
Empire State Building measures 1,424 feet to the tip.



Our tower would measure approximately 5,696 feet (4X taller).



# Reversible wind turbine blades





# Conservative estimate on WiFi bubble





# Conservative estimate on WiFi \$\$\$

Estimates based on populations of the following counties:

Hillsborough @ 1.4M residents

Pinellas @ 949K residents

Sarasota @ 398K residents

Manatee @ 353K residents

Charlotte @ 169K residents

With only these counties included, approximately 5.6M residents, we could charge \$10/month for WiFi. That would be over \$50M/month in revenue!!!

- Your mileage may vary
- Initial financing would be part of a Kickstarter fund
- City would need to finance about \$200M
- Dependent upon the wind speed
- Actual income could be negative
- Potential for sinkholes with added weight
- Insert legalese here
- Risky doesn't even begin to describe it