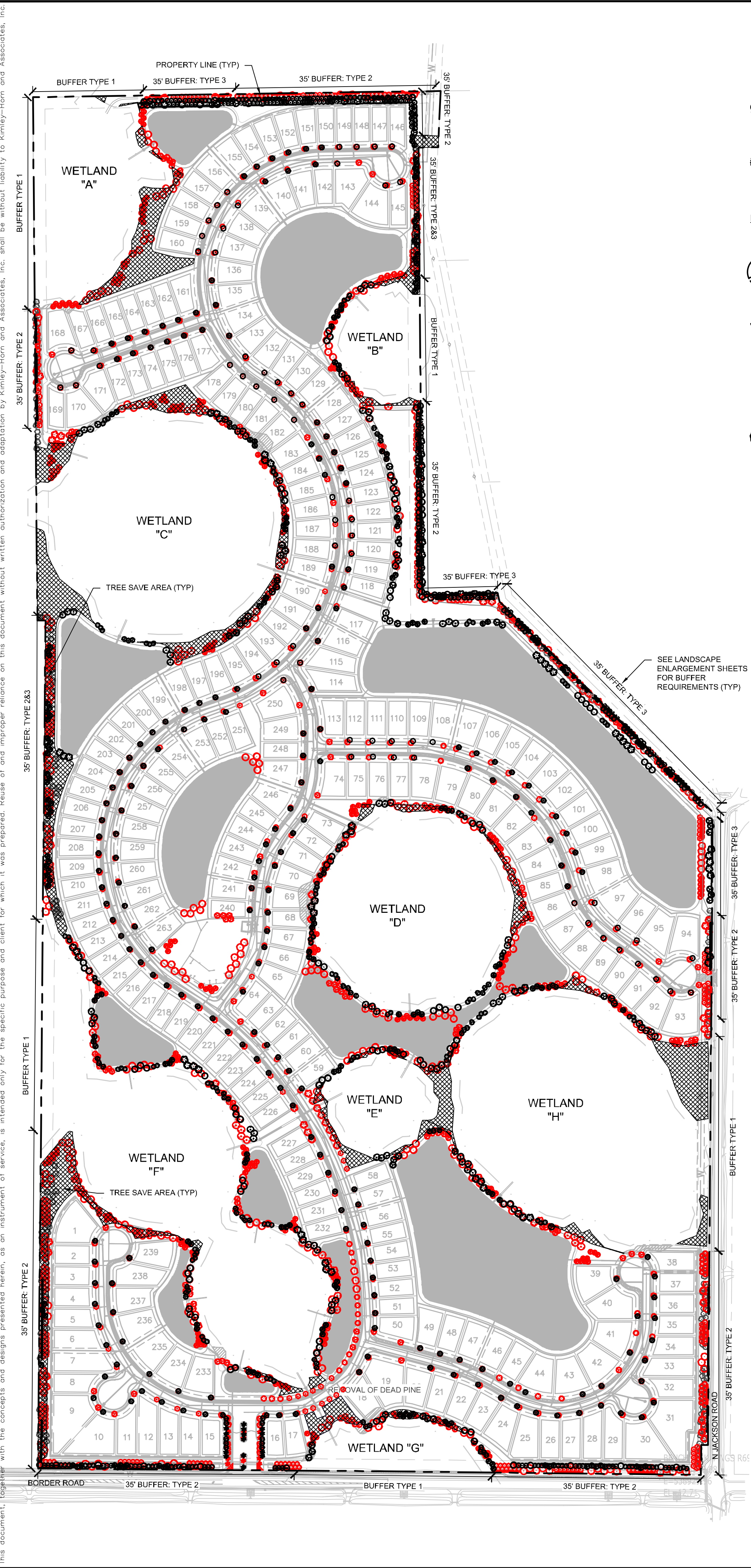


Plotted By: [redacted] Date: 08/22/2019 04:04:11pm K:\SAR-Civil\04819141 - The Woods at Venice\CAD\PlanSheets\LS-1 LANDSCAPE PLAN.dwg  
This document, together with the concepts and designs presented herein, as an instrument of service, is intended only for the specific purpose and client for which it was prepared. Reuse of and improper reliance on this document without written authorization and adaptation by Kimley-Horn and Associates, Inc. shall be without liability to Kimley-Horn and Associates, Inc.



### PLANT SCHEDULE

TREES	CODE	QTY	BOTANICAL NAME	COMMON NAME	CONT	CAL	HT	SPRD
	AS	65	ACER RUBRUM 'SUMMER RED'	SUMMER RED RED MAPLE	FG	2" CAL MIN	10' HT MIN	48" MIN
	CS	75	CONOCARPUS ERECTUS 'SERICEUS'	SILVER BUTTWOOD, MULTI-TRUNK	FG	2" CAL OA	8' HT MIN	36" MIN
	IV	102	ILEX VOMITORIA	YAUPON HOLLY	FG	2" CAL MIN	8' HT MIN	48" MIN
	JS	60	JUNIPERUS SILICICOLA	SOUTHERN RED CEDAR	FG	2" CAL MIN	8' HT MIN	36" MIN
	MC	193	MYRICA CERIFERA	WAX MYRTLE	FG	2" CAL OA	8' HT MIN	36" MIN
	MF	75	MYRCIANTHES FRAGRANS	SIMPSON STOPPER, MULTI-TRUNK	FG	2" CAL OA	8' HT MIN	36" MIN
	PD	192	PINUS ELLIOTTI 'DENSE'	SLASH PINE	FG	2" CAL MIN	8' HT MIN	24" MIN
	PO	80	PLATANUS OCCIDENTALIS	AMERICAN SYCAMORE	FG	3" CAL MIN	10' HT MIN	48" MIN
	QV	55	QUERCUS VIRGINIANA	SOUTHERN LIVE OAK	FG	3" CAL MIN	10' HT MIN	48" MIN
	RE	14	ROYSTONIA ELATA	FLORIDA ROYAL PALM	FG	HEAVY	12' GW MATCHED	
	TD	103	TAXODIUM DISTICHUM	BALD CYPRESS	FG	2" CAL MIN	8' HT MIN	24" MIN
STREET TREES	CODE	QTY	BOTANICAL NAME	COMMON NAME	CONT	CAL	HT	SPRD
	CE	200	CONOCARPUS ERECTUS	GREEN BUTTWOOD	FG	3" CAL MIN, STD	8' HT MIN	36" MIN
	CS2	63	CONOCARPUS ERECTUS 'SERICEUS'	SILVER BUTTWOOD	FG	3" CAL MIN, STD	8' HT MIN	36" MIN
SHRUBS	CODE	QTY	BOTANICAL NAME	COMMON NAME	CONT	SPACING	SIZE	
	MC3	626	MYRICA CERIFERA	WAX MYRTLE	15 GAL	48" OC	4' HT MIN	
	VO	254	CONOCARPUS ERECTUS	GREEN BUTTWOOD	15 GAL	48" OC	4' HT MIN	

DISCLAIMER:  
PLANT QUANTITIES PROVIDED IN PLANT SCHEDULE ABOVE MAY VARY DUE TO POTENTIAL REQUIRED INFILL. REFER NOTES #6, #7, AND #8 BELOW AND DETAILS #2 AND #3, SHEET LS-1A.

TREE SAVE AREA, REFER TO TREE SAVE AREAS MAP FOR QUANTITIES OF TREES/PALMS SAVED PROVIDED BY ECO CONSULTANTS.

### LANDSCAPE CALCULATIONS

	REQUIRED	PROVIDED
<b>BUFFER TYPE 1</b> ADJACENT TO EXISTING WETLAND - EXISTING VEGETATION TO BE PRESERVED / NO ADDITIONAL PLANTING REQUIRED <i>PUD MASTER PLAN ORD. NO. 2015-15</i>	SEE PLAN	SEE PLAN
<b>BUFFER TYPE 2 &amp; 3</b> ADJACENT TO LOTS AND RETENTION PONDS 35' WIDTH + 6' HT OPAQUE FENCE / WALL (TBD) + 1 SHRUB PER 10 LF 1 CANOPY TREE OR EVERGREEN TREE / 25 LF IN CASES WITHOUT PROPOSED 6' HT OPAQUE DURABLE BARRIER: ALL BUFFERS TO MEET 80% OPACITY REQUIREMENT 4 CANOPY, 11 UNDERSTORY, 18 SHRUBS PER 100 LF OR 7 CANOPY, 14 SHRUBS PER 100 LF NOTE: EXISTING NON-INVASIVE UNDERSTORY VEGETATION TO REMAIN. <i>PUD MASTER PLAN ORD. NO. 2015-15</i>	SEE PLAN CALLOUTS	SEE PLAN CALLOUTS
<b>LOT TREES WITHIN OR ADJACENT TO ROW</b> 1 TREE PER LOT WITHIN OR ADJACENT TO ROW <i>PUD MASTER PLAN ORD. NO. 2015-15</i>	SEE PLAN	SEE PLAN
<b>TREE PLANTING</b> 1 TREE / 2000 SF OF PARCEL SECTION 54-589	6,519,114 SF (TOTAL SITE) - 1,963,209 SF (WETLANDS) = 4,555,905 SF (AREA OF CONSTRUCTION ACTIVITY)* 4,555,905 / 2000 SF = 2,278 TREES	526 LOT TREES (BUILDER TO PROVIDE 2 PER LOT ON 263 LOTS) + 425 EXISTING TREES TO BE PRESERVED** + 134 EXISTING PALMS (44 TREES @ 3:1 RATIO) TO BE PRESERVED** + 263 STREET TREES + 1,000 TREES ACROSS SITE (INCLUDING BUFFERS AND OPEN SPACE + 20 TREES AT AMENITY CENTER LOCATION (UNDER SEPARATE COVER) 2,278 TREES

\* THE TOTAL NUMBER OF TREES REQUIRED IS BASED UPON THE AREA CLEARED FOR CONSTRUCTION. SHOULD THE APPROVED CONSTRUCTION PLANS REDUCE THE AREA OF CONSTRUCTION ACTIVITY, THE TREE REPLACEMENT CALCULATION WILL BE REDUCED ALSO.  
\*\* TREES TO BE PRESERVED BASED ON COUNTS PROVIDED BY ECO CONSULTANTS. REFER TO PRESERVATION AREAS MAP. REFER TO NOTE #8, THIS SHEET.

### EXISTING BUFFER TREES

- EXISTING PINE
- EXISTING SABAL PALM
- EXISTING OAK

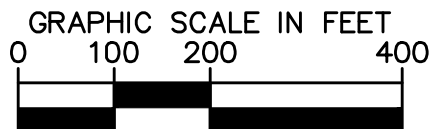
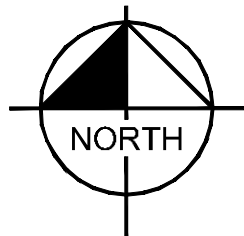
### PLANT SCHEDULE (APPROVED PLANS)

TREES	CODE	QTY	BOTANICAL NAME	COMMON NAME	CONT	CAL	HT	SPRD
	AS	109	ACER RUBRUM 'SUMMER RED'	SUMMER RED RED MAPLE	FG	3" CAL MIN	10' HT MIN	4' MIN
	CS	337	CONOCARPUS ERECTUS 'SERICEUS'	SILVER BUTTWOOD	FG	2" CAL OA	6' HT MIN	30" MIN
	IC	374	ILEX CASSINE	DAHON HOLLY	FG	2" CAL MIN	6' HT MIN	22" MIN
	JS	244	JUNIPERUS SILICICOLA	SOUTHERN RED CEDAR	FG	2" CAL MIN	6' HT MIN	22" MIN
	MC	29	MYRICA CERIFERA	WAX MYRTLE	FG	2" CAL OA	6' HT MIN	30" MIN
	PD	298	PINUS ELLIOTTI 'DENSE'	SLASH PINE	FG	3" CAL MIN	10' HT MIN	54" MIN
	PO	106	PLATANUS OCCIDENTALIS	AMERICAN SYCAMORE	FG	3" CAL MIN	10' HT MIN	54" MIN
	QV	118	QUERCUS VIRGINIANA	SOUTHERN LIVE OAK	FG	3" CAL MIN	10' HT MIN	54" MIN
	RE	17	ROYSTONIA ELATA	FLORIDA ROYAL PALM	FG	HEAVY	16' GW MATCHED	
	TD	136	TAXODIUM DISTICHUM	BALD CYPRESS	FG	3" CAL MIN	10' HT MIN	28" MIN
	UA	51	ULMUS ALATA	WINGED ELM	FG	3" CAL MIN	10' HT MIN	54" MIN
SHRUBS	CODE	QTY	BOTANICAL NAME	COMMON NAME	CONT	SPACING	SIZE	
	VO	758	VIBURNUM OBOVATUM	WALTER'S VIBURNUM	3 GAL	36" OC	2' HT MIN	

### LANDSCAPE CALCULATIONS (APPROVED PLANS)

	REQUIRED	PROVIDED
<b>BUFFER TYPE 1</b> ADJACENT TO EXISTING WETLAND - EXISTING VEGETATION TO BE PRESERVED/NO ADDITIONAL PLANTING REQUIRED <i>PUD MASTER PLAN ORD. NO. 2015-15</i>	SEE PLAN	SEE PLAN
<b>BUFFER TYPE 2 &amp; 3</b> ADJACENT TO LOTS AND RETENTION PONDS 35' WIDTH + 6' HT OPAQUE FENCE OR WALL (TBD) + 1 SHRUB PER 10 LF 1 CANOPY TREE OR EVERGREEN TREE / 25 LF NOTE: EXISTING NON-INVASIVE UNDERSTORY VEGETATION TO REMAIN. <i>PUD MASTER PLAN ORD. NO. 2015-15</i>	SEE PLAN CALLOUTS	SEE PLAN CALLOUTS
<b>LOT TREES WITHIN OR ADJACENT TO ROW</b> 1 TREE PER LOT WITHIN OR ADJACENT TO ROW <i>PUD MASTER PLAN ORD. NO. 2015-15</i>	SEE PLAN	SEE PLAN
<b>TREE REPLACEMENT</b> 1 TREE / 2000 SF OF PARCEL SECTION 54-589	6,519,114 SF (TOTAL SITE) - 1,963,209 SF (WETLANDS) - 4,555,905 SF / 2000 SF = 2,278 TREES	478 LOT TREES (BUILDER TO PROVIDE 2 PER LOT ON 239 LOTS) +1,800 TREES ACROSS SITE (INCLUDING BUFFERS AND STREET TREES) 2,278 TREES

APPROVED PLANS



CALL 2 WORKING DAYS  
BEFORE YOU DIG

IT'S THE LAW!  
DIAL 811

Know what's below.  
Call before you dig.

SUNSHINE STATE ONE CALL OF FLORIDA, INC.

**Kimley»Horn**  
© 2019 KIMLEY-HORN AND ASSOCIATES, INC.  
1777 MAIN STREET, SUITE 200, SARASOTA, FL 34236  
PHONE: 941-379-7600  
WWW.KIMLEY-HORN.COM CA 00000696

KHA PROJECT  
048119141  
DATE  
AUGUST 2019  
SCALE AS SHOWN  
DESIGNED BY PMH  
DRAWN BY JLL  
CHECKED BY TMS  
DATE: 8/22/2019

**LANDSCAPE PLAN  
COMPARISON  
EXHIBIT**

**WOODS AT VENICE**  
PREPARED FOR  
**MERITAGE HOMES OF  
FLORIDA, INC.**  
CITY OF VENICE  
FLORIDA

SHEET NUMBER  
**EX-1**