

CIELO
A SUBDIVISION
IN SECTION 35, TOWNSHIP 38 SOUTH, RANGE 19 EAST
CITY OF VENICE, SARASOTA COUNTY, FLORIDA

CERTIFICATE OF OWNERSHIP AND DEDICATION

STATE OF FLORIDA }
COUNTY OF SARASOTA } SS

THE UNDERSIGNED, JAMES R. SCHIER, (I) AS MANAGER OF BORDER AND JACARANDA HOLDINGS, LLC, A FLORIDA LIMITED LIABILITY COMPANY, AND (II) AS MANAGER OF NCDG MANAGEMENT, LLC, A FLORIDA LIMITED LIABILITY COMPANY, AS MANAGER OF NEAL COMMUNITIES OF SOUTHWEST FLORIDA, LLC, A FLORIDA LIMITED LIABILITY COMPANY, ALL COMPANIES LICENSED TO DO BUSINESS IN THE STATE OF FLORIDA, (COLLECTIVELY, "OWNER"), CERTIFIES OWNERSHIP OF THE PROPERTY DESCRIBED HEREON, AND HAS CAUSED THIS PLAT ENTITLED "CIELO" TO BE MADE AND DOES HEREBY DEDICATE THE FOLLOWING:

TO THE CITY OF VENICE, SARASOTA COUNTY AND PUBLIC AND PRIVATE UTILITY COMPANIES, ALL ACTING WITHIN THE SCOPE OF THEIR EMPLOYMENT, A NON-EXCLUSIVE EASEMENT OVER, UNDER AND ACROSS TRACT 100 (PRIVATE ROAD WAY) FOR THE LIMITED PURPOSES OF (I) INGRESS/EGRESS TO ACCESS OTHER PUBLIC EASEMENTS AND PUBLIC FACILITIES IDENTIFIED ON THE PLAT, AND FOR THE OPERATION AND MAINTENANCE THEREOF, (II) INGRESS/EGRESS BY EMERGENCY AND LAW ENFORCEMENT PERSONNEL, AND (III) INGRESS/EGRESS FOR THE PURPOSE OF INSTALLATION AND MAINTENANCE OF UNDERGROUND UTILITY IMPROVEMENTS AND DRAINAGE. IT IS SPECIFICALLY UNDERSTOOD THAT NO OBLIGATION IS IMPOSED UPON THE CITY OR COUNTY, NOR SHALL ANY REQUEST EVER BE ENTERTAINED BY THE CITY OR COUNTY, TO MAINTAIN SAID PRIVATE ROADWAY IMPROVEMENTS.

IN WITNESS WHEREOF, THE FOREGOING HAS SET HIS HAND AND SEAL THIS _____ DAY OF _____, 2019:

BORDER AND JACARANDA HOLDINGS, LLC, A FLORIDA LIMITED LIABILITY COMPANY

WITNESS: _____ BY: _____
JAMES R. SCHIER, MANAGER

PRINT: _____

WITNESS: _____

PRINT: _____

NEAL COMMUNITIES OF SOUTHWEST FLORIDA, LLC, A FLORIDA LIMITED LIABILITY COMPANY
BY: NCDG MANAGEMENT LLC, A FLORIDA LIMITED LIABILITY COMPANY, ITS MANAGER

WITNESS: _____ BY: _____
JAMES R. SCHIER, MANAGER

PRINT: _____

WITNESS: _____

PRINT: _____

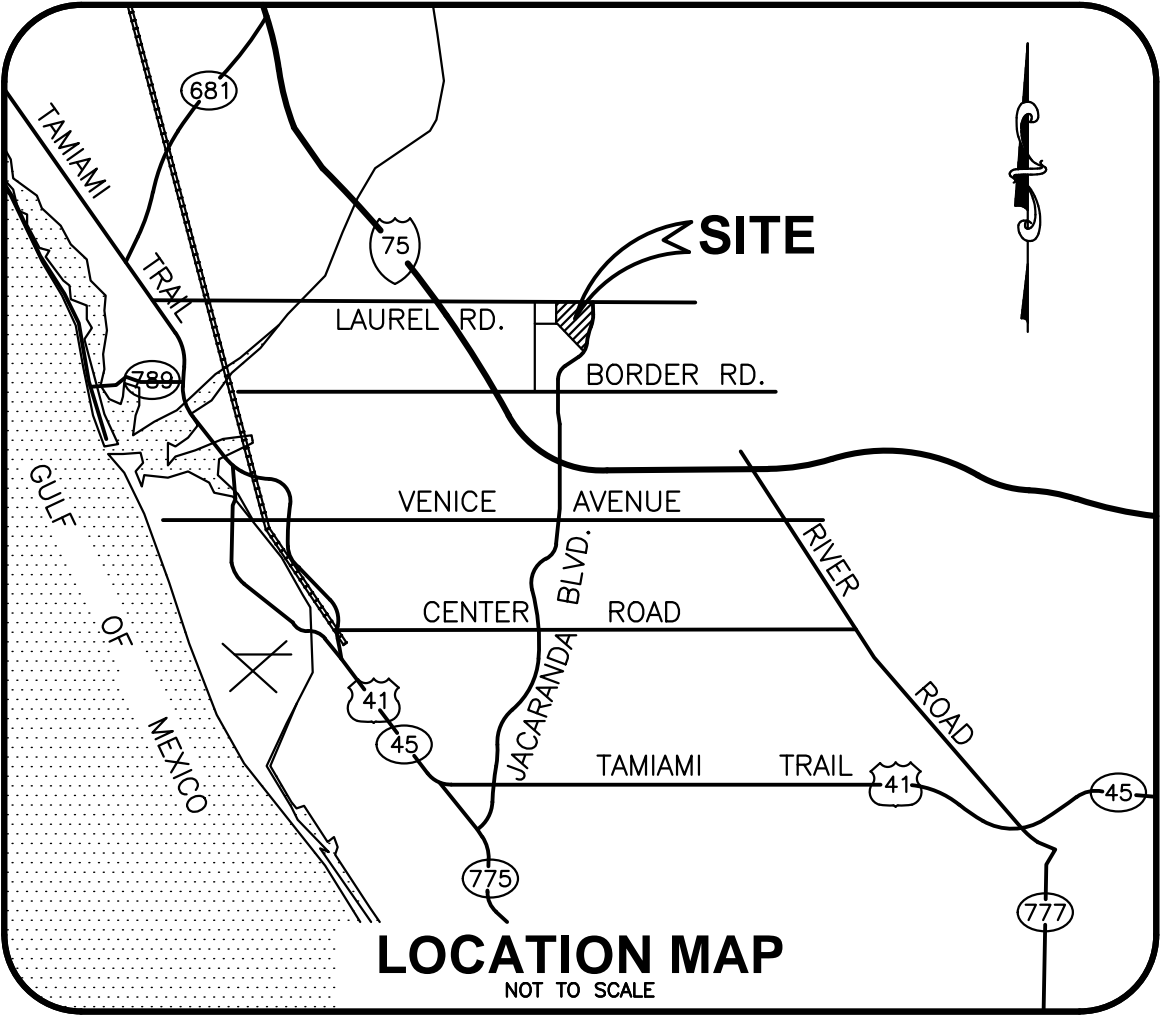
STATE OF FLORIDA }
COUNTY OF SARASOTA } SS

THE FOREGOING INSTRUMENT WAS ACKNOWLEDGED BEFORE ME THIS _____ DAY OF _____, 2019 BY JAMES R. SCHIER, (I) AS MANAGER OF BORDER AND JACARANDA HOLDINGS, LLC, A FLORIDA LIMITED LIABILITY COMPANY, AND (II) AS MANAGER OF NCDG MANAGEMENT, LLC, A FLORIDA LIMITED LIABILITY COMPANY, AS MANAGER OF NEAL COMMUNITIES OF SOUTHWEST FLORIDA, LLC, A FLORIDA LIMITED LIABILITY COMPANY, ON BEHALF OF THE COMPANY, () WHO IS PERSONALLY KNOWN TO ME, OR () WHO HAS PRODUCED _____ AS IDENTIFICATION.

WITNESS MY HAND AND OFFICIAL SEAL AT SARASOTA COUNTY, FLORIDA, THIS _____ DAY OF _____, 2019.

NOTARY PUBLIC STATE OF FLORIDA AT LARGE

MY COMMISSION EXPIRES: _____



GRANT OF EASEMENTS

UNLESS OTHERWISE INDICATED, LOT LINE EASEMENTS OF TEN FEET (10') IN WIDTH ALONG EACH FRONT LOT LINE, FIVE FEET (5') IN WIDTH ALONG EACH REAR LOT LINE AND THREE FEET (3') IN WIDTH ALONG EACH SIDE LOT LINE ARE HEREBY CREATED AND PROVIDED FOR THE PURPOSE OF ACCOMMODATING UNDERGROUND UTILITIES. SUCH EASEMENTS SHALL ALSO BE EASEMENTS FOR THE CONSTRUCTION, INSTALLATION, MAINTENANCE AND OPERATION OF TELECOMMUNICATIONS SERVICES, HOWEVER, NO SUCH CONSTRUCTION, INSTALLATION, MAINTENANCE AND OPERATION OF TELECOMMUNICATIONS SERVICES SHALL INTERFERE WITH THE FACILITIES AND SERVICES OF ANY ELECTRIC, TELEPHONE, GAS OR OTHER PUBLIC OR PRIVATE UTILITY. IN THE EVENT THAT A TELECOMMUNICATIONS COMPANY DAMAGES THE FACILITIES OF A PUBLIC OR PRIVATE UTILITY, IT SHALL BE SOLELY RESPONSIBLE FOR THE DAMAGES. WHERE MORE THAN ONE LOT IS INTENDED AS A BUILDING SITE, THE LOT LINE EASEMENTS SHALL AUTOMATICALLY MOVE TO THE OUTSIDE BOUNDARIES OF THE BUILDING SITE. ALL OTHER EASEMENTS SHOWN ON THIS PLAT ARE HEREBY RESERVED IN PERPETUITY FOR THE PURPOSE NOTED. ALL EASEMENTS ON THIS PLAT ARE PRIVATE UNLESS OTHERWISE SPECIFICALLY NOTED. A TEN FOOT (10') UTILITY EASEMENT IS HEREBY GRANTED ALONG THE WESTERLY RIGHT-OF-WAY OF JACARANDA BOULEVARD AND NORTHERLY RIGHT-OF-WAY OF BORDER ROAD AS SHOWN ON THIS PLAT.

NOTES

- 1) NOTICE: THIS PLAT, AS RECORDED IN ITS GRAPHIC FORM, IS THE OFFICIAL DEPICTION OF THE SUBDIVIDED LANDS DESCRIBED HEREIN AND WILL IN NO CIRCUMSTANCES BE SUPPLANTED IN AUTHORITY BY ANY OTHER GRAPHIC OR DIGITAL FORM OF THE PLAT. THERE ARE ADDITIONAL RESTRICTIONS THAT ARE NOT RECORDED ON THIS PLAT THAT MAY BE FOUND IN THE PUBLIC RECORDS OF THIS COUNTY.
- 2) BEARINGS SHOWN HEREON ARE BASED ON STATE PLANE COORDINATES FOR THE FLORIDA WEST ZONE, NORTH AMERICAN DATUM 1983/1990. THE BASIS OF BEARING FOR THIS PLAT IS THE WEST LINE OF SECTION 35, TOWNSHIP 38 SOUTH, RANGE 19 EAST, HAVING A GRID BEARING OF N00°19'42"E.
- 3) THERE MAY BE ADDITIONAL RESTRICTIONS THAT ARE NOT RECORDED ON THIS PLAT THAT MAY BE FOUND IN THE PUBLIC RECORDS OF SARASOTA COUNTY, FLORIDA.
- 4) ALL LANDS WITHIN THE PLAT ARE SUBJECT TO THE DECLARATION OF COVENANTS, CONDITIONS AND RESTRICTIONS FOR CIELO, TO BE RECORDED IN OFFICIAL RECORDS INSTRUMENT NO. _____, OF THE PUBLIC RECORDS OF SARASOTA COUNTY, FLORIDA.
- 5) ALL LINES INTERSECTING WITH A CURVE WHICH ARE NOT DESIGNATED WITH (R), ARE NON-RADIAL.
- 6) TRACT 700 RESERVED FOR OWNER AS FUTURE DEVELOPMENT.

CERTIFICATE OF APPROVAL OF COUNTY CLERK

STATE OF FLORIDA }
COUNTY OF SARASOTA } SS

I, KAREN E. RUSHING, COUNTY CLERK OF SARASOTA COUNTY, FLORIDA, HEREBY CERTIFY THAT THIS PLAT HAS BEEN EXAMINED AND THAT IT COMPLIES IN FORM WITH ALL THE REQUIREMENTS OF THE STATUTES OF FLORIDA PERTAINING TO MAPS AND PLATS, AND THAT THIS PLAT HAS BEEN FILED FOR RECORD IN THE PLAT BOOK _____, PAGES _____, PUBLIC RECORDS OF SARASOTA COUNTY, FLORIDA, THIS _____ DAY OF _____, 2019.

KAREN E. RUSHING
CLERK OF CIRCUIT COURT
SARASOTA COUNTY, FLORIDA

BY: _____
DEPUTY CLERK

CERTIFICATE OF APPROVAL OF CITY COUNCIL

STATE OF FLORIDA }
COUNTY OF SARASOTA } SS

IT IS HEREBY CERTIFIED THAT THIS PLAT HAS BEEN OFFICIALLY ACCEPTED BY THE CITY COUNCIL OF VENICE, A MUNICIPALITY IN THE COUNTY OF SARASOTA, STATE OF FLORIDA, THIS _____ DAY OF _____, 2019.

CITY ATTORNEY

MAYOR, CITY OF VENICE

CITY ENGINEER

CERTIFICATE OF REVIEWING SURVEYOR AND MAPPER

IT IS HEREBY CERTIFY THAT I HAVE REVIEWED THIS PLAT FOR CONFORMITY TO CHAPTER 177, PART 1, PLATTING OF THE FLORIDA STATUTES, AND THAT I AM UNDER CONTRACT TO THE APPROPRIATE LOCAL GOVERNING BODY AND ACTING HERETO AS AN AGENT TO THE CITY OF VENICE. THIS LIMITED CERTIFICATION AS TO FACIAL CONFORMITY WITH THE REQUIREMENTS OF CHAPTER 177 OF THE FLORIDA STATUTES IS NOT INTENDED TO BE AND SHOULD NOT BE CONSTRUED AS A CERTIFICATION OF THE ACCURACY OR QUALITY OF THE SURVEYING AND MAPPING REFLECTED ON THIS PLAT.

DATE

ROBERT B. STRAYER, JR.
FLORIDA SURVEYOR CERTIFICATE NO. 5027

CERTIFICATE OF SURVEYOR

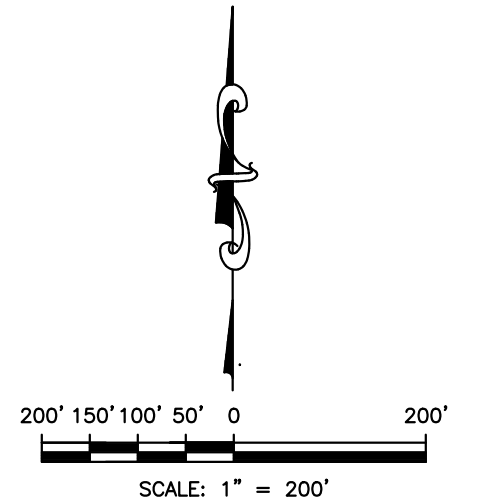
KNOW ALL MEN BY THESE PRESENTS, THAT I, THE UNDERSIGNED FLORIDA LICENSED AND REGISTERED PROFESSIONAL LAND SURVEYOR, HEREBY CERTIFY THAT THIS PLAT IS A TRUE AND CORRECT REPRESENTATION OF THE LANDS SURVEYED, THAT THE SURVEY WAS MADE UNDER MY RESPONSIBLE DIRECTION AND SUPERVISION, THAT THE SURVEY DATA COMPLIES WITH ALL THE REQUIREMENTS OF CHAPTER 177, AND THAT THE PERMANENT REFERENCE MONUMENTS (PRM'S) WERE INSTALLED ON 8/14/2019. THE PERMANENT CONTROL POINTS (PCP'S), AND LOT CORNERS INSTALLATION DATE WILL BE COMPLETED WITHIN 1 YEAR FROM THE DATE OF RECORDING AND WILL BE CERTIFIED BY A RECORDED AFFIDAVIT.

DATE: / /2019

JEFFERY B. MORROW
PROFESSIONAL SURVEYOR & MAPPER
FLORIDA CERTIFICATION NO. 6296

POINT BREAK SURVEYING, LLC
CERTIFICATE OF AUTHORIZATION LB 7384
8111 BLAIKIE COURT, SUITE E
SARASOTA, FL 34240
PHONE: (941) 378-4797
FAX: (941) 378-0058

CIELO
A SUBDIVISION
IN SECTION 35, TOWNSHIP 38
SOUTH, RANGE 19 EAST
CITY OF VENICE, SARASOTA
COUNTY, FLORIDA



DESCRIPTION

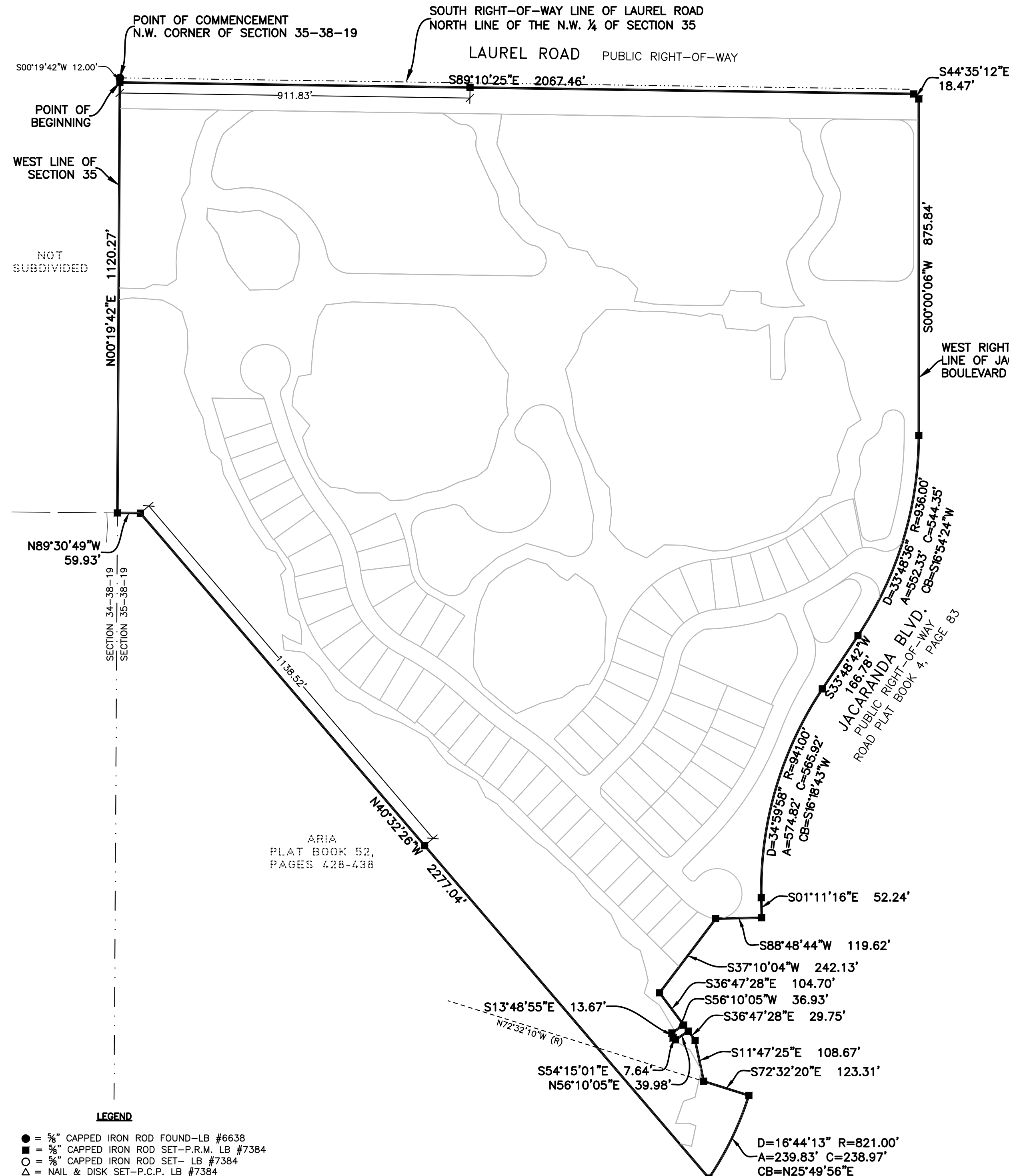
A PARCEL OF LAND LYING IN SECTION 35, TOWNSHIP 38 SOUTH, RANGE 19 EAST, SARASOTA COUNTY, FLORIDA, BEING MORE PARTICULARLY DESCRIBED AS FOLLOWS: COMMENCE AT THE NW CORNER OF SECTION 35, TOWNSHIP 38 SOUTH, RANGE 19 EAST; THENCE S.00°19'42"W., ALONG THE WEST LINE OF SAID SECTION 35, A DISTANCE OF 12.00 FEET TO THE SOUTH RIGHT-OF-WAY LINE OF LAUREL ROAD, AS DESCRIBED IN OFFICIAL RECORDS INSTRUMENT NO. 2019041853 OF THE PUBLIC RECORDS OF SARASOTA COUNTY, FLORIDA, AND THE POINT OF BEGINNING;

THENCE S.89°10'25"E., ALONG SAID SOUTH RIGHT-OF-WAY LINE, ALSO LYING 12.00 FEET SOUTH AND PARALLEL WITH THE NORTH LINE OF THE NW 1/4 OF SAID SECTION 35, A DISTANCE OF 2,067.46 FEET TO THE WEST RIGHT-OF-WAY LINE OF JACARANDA BOULEVARD, AS DESCRIBED IN ROAD PLAT BOOK 4, PAGE 83 OF THE PUBLIC RECORDS OF SARASOTA COUNTY, FLORIDA; THENCE ALONG SAID WEST RIGHT-OF-WAY THE FOLLOWING SEVENTEEN (17) COURSES: (1) THENCE S.44°35'12"E., A DISTANCE OF 18.47 FEET; (2) THENCE S.00°00'06"W., A DISTANCE OF 875.84 FEET TO A POINT OF CURVE TO THE RIGHT HAVING A RADIUS OF 936.00 FEET AND A CENTRAL ANGLE OF 33°48'36"; (3) THENCE SOUTHERLY ALONG THE ARC A DISTANCE OF 552.33 FEET; (4) THENCE S.33°48'42"W., A DISTANCE OF 166.78 FEET TO A POINT OF CURVE TO THE LEFT HAVING A RADIUS OF 941.00 FEET AND A CENTRAL ANGLE OF 34°59'58"; (5) THENCE SOUTHERLY ALONG THE ARC A DISTANCE OF 574.82 FEET; (6) THENCE S.01°11'16"E., A DISTANCE OF 52.24 FEET; (7) THENCE S.88°48'44"W., A DISTANCE OF 119.62 FEET; (8) THENCE S.37°10'04"W., A DISTANCE OF 242.13 FEET; (9) THENCE S.36°47'28"E., A DISTANCE OF 104.70 FEET; (10) THENCE S.56°10'05"W., A DISTANCE OF 36.93 FEET; (11) THENCE S.13°48'55"E., A DISTANCE OF 13.67 FEET; (12) THENCE S.54°15'01"E., A DISTANCE OF 7.64 FEET; (13) THENCE N.56°10'05"E., A DISTANCE OF 39.98 FEET; (14) THENCE S.36°47'28"E., A DISTANCE OF 29.75 FEET; (15) THENCE S.11°47'25"E., A DISTANCE OF 108.67 FEET; (16) THENCE S.72°32'20"E., A DISTANCE OF 123.31 FEET TO THE POINT OF CURVE OF A NON TANGENT CURVE TO THE RIGHT, OF WHICH THE RADIUS POINT LIES N.72°32'10"W., A RADIAL DISTANCE OF 821.00 FEET; (17) THENCE SOUTHWESTERLY ALONG THE ARC OF SAID CURVE, THROUGH A CENTRAL ANGLE OF 16°44'13", A DISTANCE OF 239.83 FEET TO THE NORTHERLY LINE OF ARIA, AS RECORDED IN PLAT BOOK 52, PAGES 428 - 438, OF THE PUBLIC RECORDS OF SARASOTA COUNTY, FLORIDA; THENCE N.40°32'26"W., ALONG SAID NORTHERLY LINE, A DISTANCE OF 2277.04 FEET; THENCE N.89°30'49"W., CONTINUING ALONG SAID NORTHERLY LINE OF ARIA, A DISTANCE OF 59.93 FEET TO THE WEST LINE OF SAID SECTION 35; THENCE N.00°19'42"E., ALONG SAID WEST LINE, A DISTANCE OF 1120.27 FEET TO THE POINT OF BEGINNING.

CONTAINING 3,877,716.72 SQUARE FEET OR 89.0201 ACRES, MORE OR LESS.

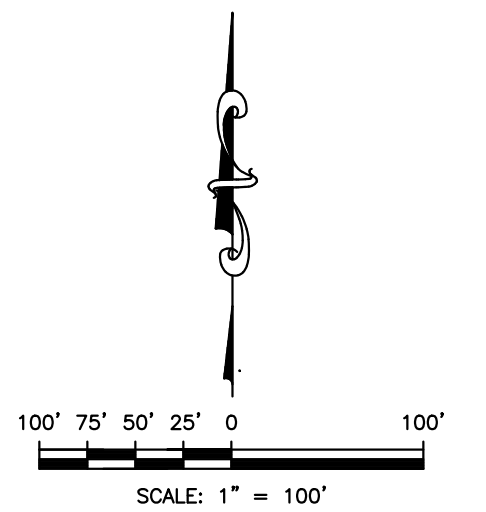
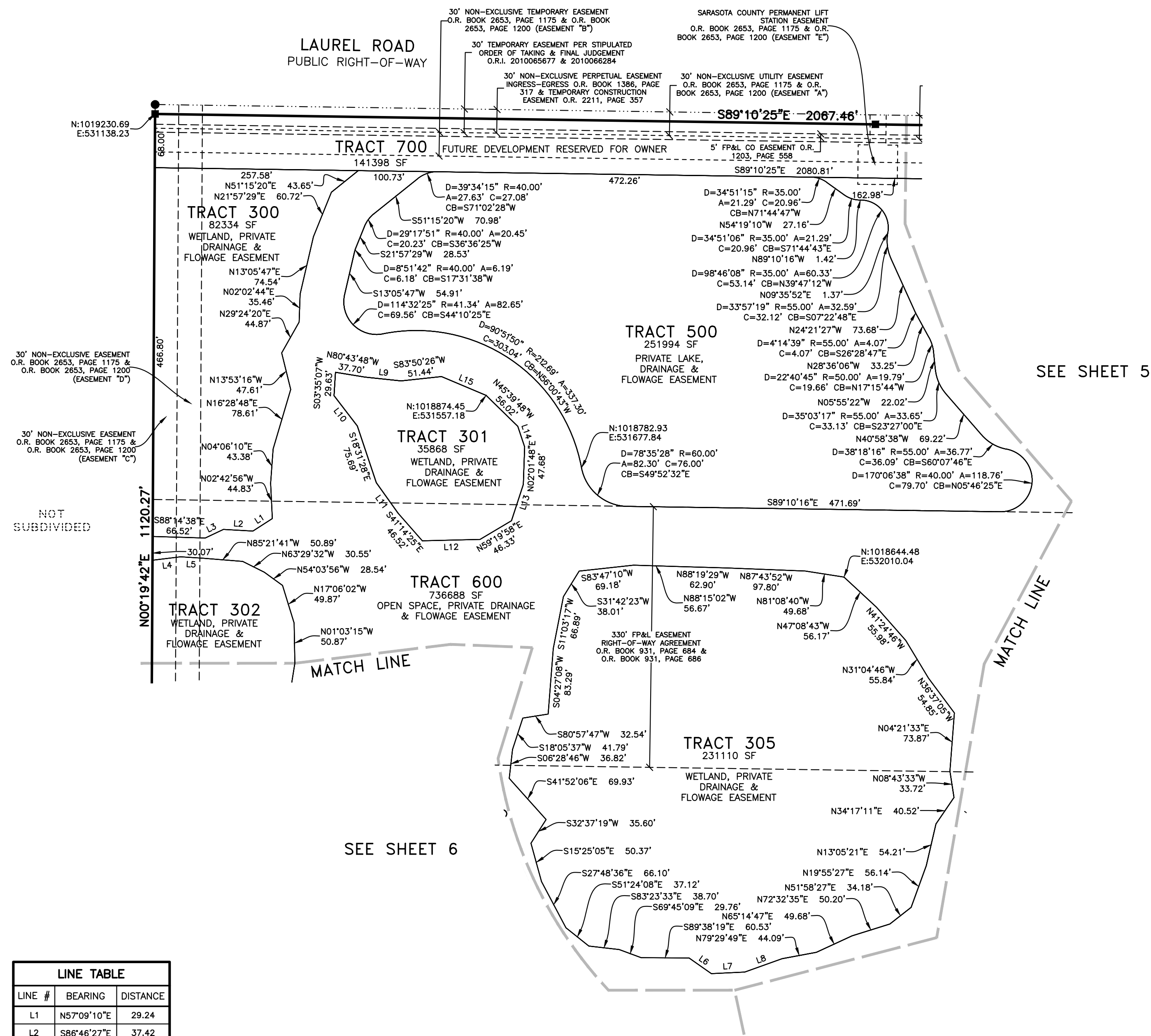
OVERALL BOUNDARY

POINT BREAK SURVEYING, LLC
CERTIFICATE OF AUTHORIZATION LB 7384
8111 BLAIKIE COURT, SUITE E
SARASOTA, FL 34240
PHONE: (941) 378-4797
FAX: (941) 378-0058



LEGEND
● = 5/8" CAPPED IRON ROD FOUND-LB #6638
■ = 5/8" CAPPED IRON ROD SET-P.R.M. LB #7384
○ = 5/8" CAPPED IRON ROD SET- LB #7384
△ = NAIL & DISK SET-P.C.P. LB #7384
SF = SQUARE FEET R = RADIUS
D = DELTA A = ARC C = CHORD
CB = CHORD BEARING (R) = RADIAL LINE
P.R.M.=PERMANENT REFERENCE MONUMENT
— = BREAK POINT

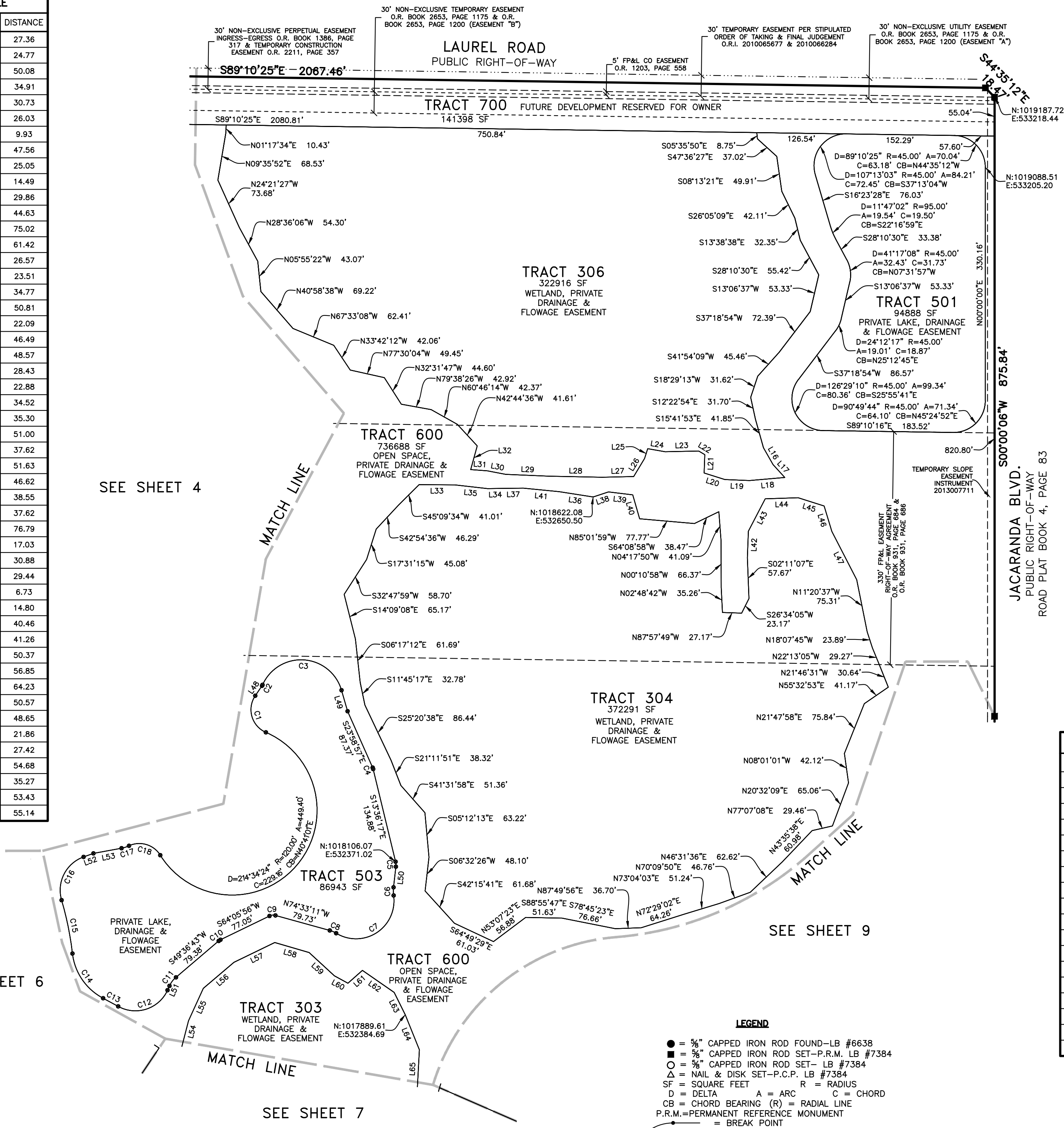
CIELO
A SUBDIVISION
IN SECTION 35, TOWNSHIP 38
SOUTH, RANGE 19 EAST
CITY OF VENICE, SARASOTA
COUNTY, FLORIDA



LEGEND

- = 5/8" CAPPED IRON ROD FOUND-LB #6638
- = 5/8" CAPPED IRON ROD SET-P.R.M. LB #7384
- = 5/8" CAPPED IRON ROD SET- LB #7384
- △ = NAIL & DISK SET-P.C.P. LB #7384
- SF = SQUARE FEET R = RADIUS
- D = DELTA A = ARC C = CHORD
- CB = CHORD BEARING (R) = RADIAL LINE
- P.R.M.=PERMANENT REFERENCE MONUMENT
- = BREAK POINT

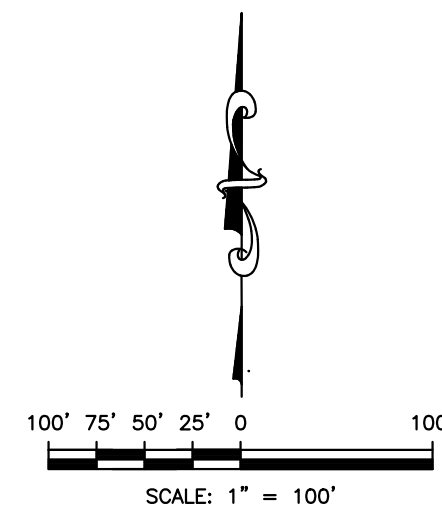
LINE TABLE		
LINE #	BEARING	DISTANCE
L16	S29°34'16"E	27.36
L17	S42°19'11"E	24.77
L18	S85°05'42"W	50.08
L19	N87°40'26"W	34.91
L20	N72°33'25"W	30.73
L21	N01°57'45"E	26.03
L22	N59°12'07"W	9.93
L23	S88°49'02"W	47.56
L24	N80°10'29"W	25.05
L25	S17°38'27"W	14.49
L26	S31°08'57"W	29.86
L27	S88°39'57"W	44.63
L28	N88°51'45"W	75.02
L29	N87°36'02"W	61.42
L30	N79°03'02"W	26.57
L31	N85°43'38"W	23.51
L32	N15°25'28"E	34.77
L33	N89°38'19"W	50.81
L34	S89°11'46"W	22.09
L35	N83°28'25"W	46.49
L36	N81°07'25"W	48.57
L37	S89°14'39"W	28.43
L38	S71°41'50"W	22.88
L39	N83°06'55"W	34.52
L40	N16°09'18"W	35.30
L41	N84°21'09"W	51.00
L42	S02°08'32"W	37.62
L43	S27°27'02"W	51.63
L44	S88°05'44"W	46.62
L45	N72°20'35"W	38.55
L46	N16°49'16"W	37.62
L47	N27°17'43"W	76.79
L48	N34°17'11"E	17.03
L49	S16°05'44"E	30.88
L50	S06°32'26"W	29.44
L51	S24°34'53"W	6.73
L52	N70°16'03"E	14.80
L53	N79°29'49"E	40.46
L54	S14°27'07"W	41.26
L55	S24°34'53"W	50.37
L56	S49°36'43"W	56.85
L57	S64°05'56"W	64.23
L58	N73°42'44"W	50.57
L59	N47°20'28"W	48.65
L60	N61°22'10"W	21.86
L61	S48°23'59"W	27.42
L62	N55°12'53"W	54.68
L63	N26°21'51"W	35.27
L64	N21°57'49"W	53.43
L65	N03°00'21"E	55.14



PLAT BOOK _____ PAGE _____

SHEET 5 OF 9

CIELO
A SUBDIVISION
IN SECTION 35, TOWNSHIP 38
SOUTH, RANGE 19 EAST
CITY OF VENICE, SARASOTA
COUNTY, FLORIDA

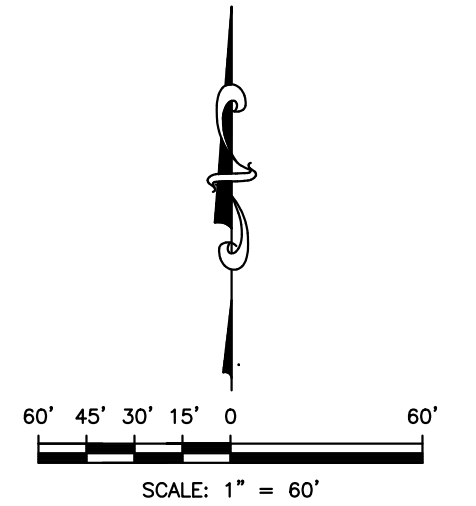


CURVE DATA					
CURVE #	DELTA	RADIUS	ARC	CHORD	CB
C1	100°53'22"	35.00'	61.63'	53.97'	S16°09'30"E
C2	10°26'52"	8.00'	1.46'	1.46'	N29°03'44"E
C3	140°03'58"	59.56'	145.60'	111.96'	N86°07'43"W
C4	10°22'40"	12.00'	2.17'	2.17'	N18°47'37"W
C5	20°08'43"	20.00'	7.03'	7.00'	N3°31'55"W
C6	14°40'43"	45.00'	11.53'	11.50'	S0°47'55"E
C7	129°42'03"	53.75'	121.67'	97.31'	N56°42'45"E
C8	16°06'57"	35.00'	9.84'	9.81'	N66°29'42"W
C9	41°20'53"	12.00'	8.66'	8.47'	S84°46'23"W
C10	14°29'14"	12.00'	3.03'	3.03'	S56°51'19"W
C11	25°01'49"	35.00'	15.29'	15.17'	S37°05'48"W
C12	94°31'40"	50.00'	82.49'	73.45'	N71°50'43"E
C13	1°26'02"	968.00'	24.23'	24.23'	N61°36'28"W
C14	55°43'37"	82.00'	79.75'	76.65'	S34°27'41"E
C15	9°49'06"	450.00'	77.11'	77.02'	N11°30'25"W
C16	86°41'02"	50.00'	75.65'	68.64'	S26°55'32"W
C17	14°07'55"	45.00'	11.10'	11.07'	N72°25'51"E
C18	82°36'19"	35.00'	50.46'	46.20'	N73°19'57"W

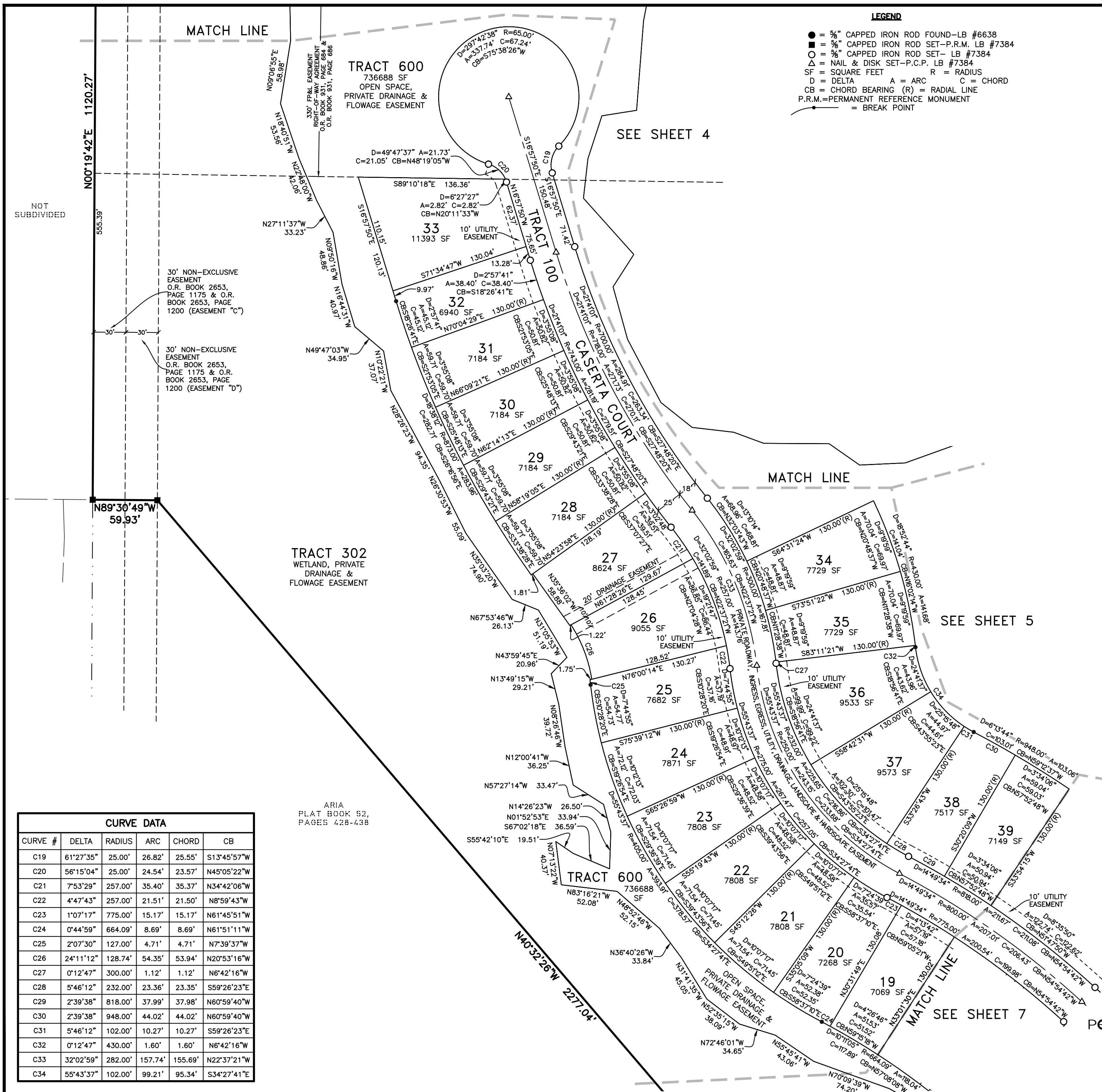
POINT BREAK SURVEYING, LLC
CERTIFICATE OF AUTHORIZATION LB 7384
8111 BLAIKIE COURT, SUITE E
SARASOTA, FL 34240
PHONE: (941) 378-4797
FAX: (941) 378-0058

POL

CIELO
A SUBDIVISION
IN SECTION 35, TOWNSHIP 38
SOUTH, RANGE 19 EAST
CITY OF VENICE, SARASOTA
COUNTY, FLORIDA



- LEGEND**
- = 1/2" CAPPED IRON ROD FOUND-LB #6638
 - = 1/2" CAPPED IRON ROD SET-P.R.M. LB #7384
 - = 1/2" CAPPED IRON ROD SET- LB #7384
 - △ = NAIL & DISK SET-P.C.P. LB #7384
 - SF = SQUARE FEET
 - D = DELTA
 - A = ARC
 - R = RADIUS
 - C = CHORD
 - CB = CHORD BEARING (R) = RADIAL LINE
 - P.R.M. = PERMANENT REFERENCE MONUMENT
 - = BREAK POINT



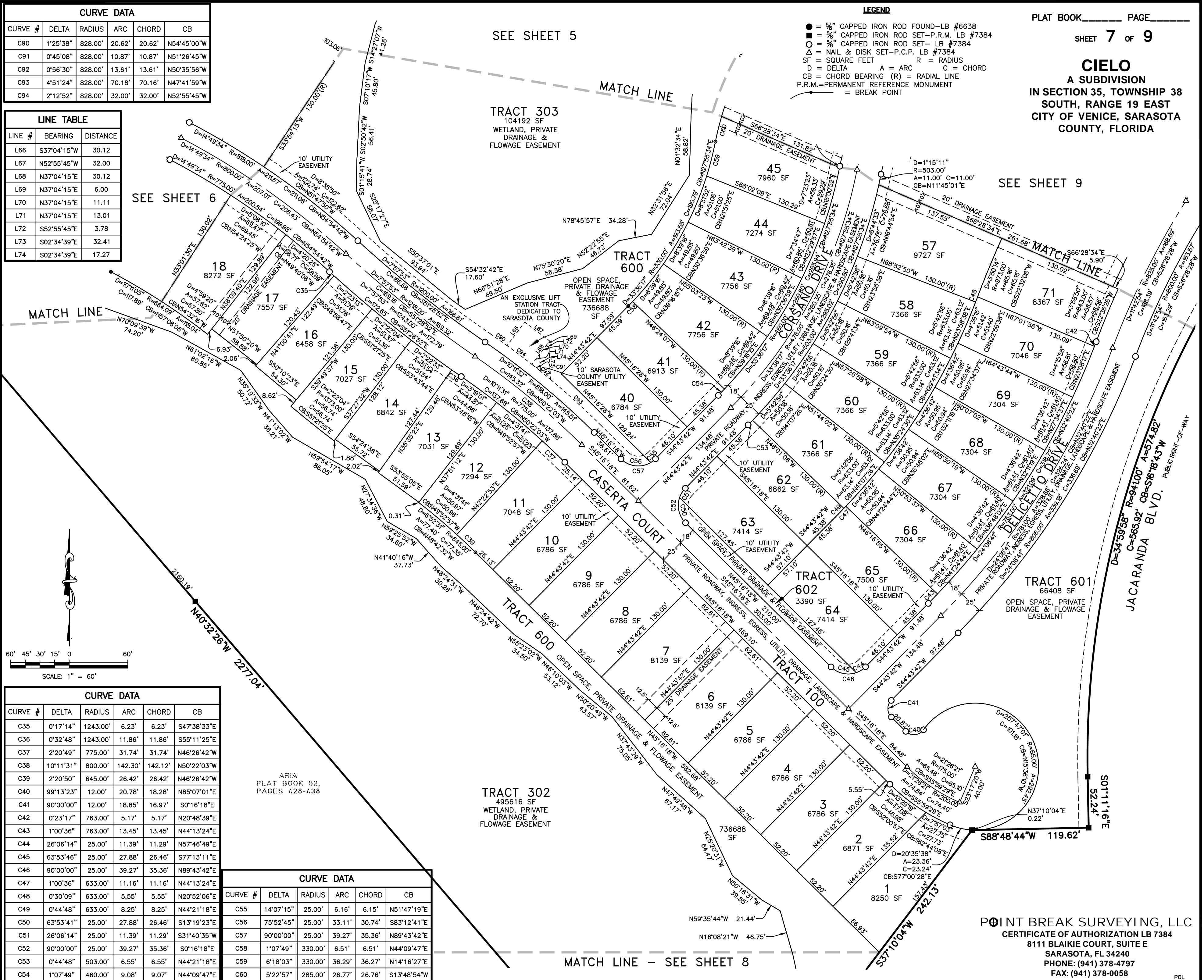
CURVE DATA					
CURVE #	DELTA	RADIUS	ARC	CHORD	CB
C19	61°27'35"	25.00'	26.82'	25.55'	S13°45'57"W
C20	56°15'04"	25.00'	24.54'	23.57'	N45°05'22"W
C21	7°53'29"	257.00'	35.40'	35.37'	N34°42'06"W
C22	4°47'43"	257.00'	21.51'	21.50'	N8°59'43"W
C23	1°07'17"	775.00'	15.17'	15.17'	N61°45'51"W
C24	0°44'59"	664.09'	8.69'	8.69'	N61°51'11"W
C25	2°07'30"	127.00'	4.71'	4.71'	N7°39'37"W
C26	24°11'12"	128.74'	54.35'	53.94'	N20°53'16"W
C27	0°12'47"	300.00'	1.12'	1.12'	N6°42'16"W
C28	5°46'12"	232.00'	23.36'	23.35'	S59°26'23"E
C29	2°39'38"	818.00'	37.99'	37.98'	N60°59'40"W
C30	2°39'38"	948.00'	44.02'	44.02'	N60°59'40"W
C31	5°46'12"	102.00'	10.27'	10.27'	S59°26'23"E
C32	0°12'47"	430.00'	1.60'	1.60'	N6°42'16"W
C33	32°02'59"	282.00'	157.74'	155.69'	N22°37'21"W
C34	55°43'37"	102.00'	99.21'	95.34'	S34°27'41"E

CURVE DATA					
CURVE #	DELTA	RADIUS	ARC	CHORD	CB
C90	1°25'38"	828.00'	20.62'	20.62'	N54°45'00"W
C91	0°45'08"	828.00'	10.87'	10.87'	N51°26'45"W
C92	0°56'30"	828.00'	13.61'	13.61'	N50°35'56"W
C93	4°51'24"	828.00'	70.18'	70.16'	N47°41'59"W
C94	2°12'52"	828.00'	32.00'	32.00'	N52°55'45"W

LINE TABLE		
LINE #	BEARING	DISTANCE
L66	S37°04'15"W	30.12
L67	N52°55'45"W	32.00
L68	N37°04'15"E	30.12
L69	N37°04'15"E	6.00
L70	N37°04'15"E	11.11
L71	N37°04'15"E	13.01
L72	S52°55'45"E	3.78
L73	S02°34'39"E	32.41
L74	S02°34'39"E	17.27

CURVE DATA					
CURVE #	DELTA	RADIUS	ARC	CHORD	CB
C35	0°17'14"	1243.00'	6.23'	6.23'	S47°38'33"E
C36	0°32'48"	1243.00'	11.86'	11.86'	S55°11'25"E
C37	2°20'49"	775.00'	31.74'	31.74'	N46°26'42"W
C38	10°11'31"	800.00'	142.30'	142.12'	N50°22'03"W
C39	2°20'50"	645.00'	26.42'	26.42'	N46°26'42"W
C40	99°13'23"	12.00'	20.78'	18.28'	N85°07'01"E
C41	90°00'00"	12.00'	18.85'	16.97'	S0°16'18"E
C42	0°23'17"	763.00'	5.17'	5.17'	N20°48'39"E
C43	1°00'36"	763.00'	13.45'	13.45'	N44°13'24"E
C44	26°06'14"	25.00'	11.39'	11.29'	N57°46'49"E
C45	63°53'46"	25.00'	27.88'	26.46'	S77°13'11"E
C46	90°00'00"	25.00'	39.27'	35.36'	N89°43'42"E
C47	1°00'36"	633.00'	11.16'	11.16'	N44°13'24"E
C48	0°30'09"	633.00'	5.55'	5.55'	N20°52'06"E
C49	0°44'48"	633.00'	8.25'	8.25'	N44°21'18"E
C50	63°53'41"	25.00'	27.88'	26.46'	S13°19'23"E
C51	26°06'14"	25.00'	11.39'	11.29'	S31°40'35"W
C52	90°00'00"	25.00'	39.27'	35.36'	S0°16'18"E
C53	0°44'48"	503.00'	6.55'	6.55'	N44°21'18"E
C54	1°07'49"	460.00'	9.08'	9.07'	N44°09'47"E

CURVE DATA					
CURVE #	DELTA	RADIUS	ARC	CHORD	CB
C55	14°07'15"	25.00'	6.16'	6.15'	N51°47'19"E
C56	75°52'45"	25.00'	33.11'	30.74'	S83°12'41"E
C57	90°00'00"	25.00'	39.27'	35.36'	N89°43'42"E
C58	1°07'49"	330.00'	6.51'	6.51'	N44°09'47"E
C59	6°18'03"	330.00'	36.29'	36.27'	N14°16'27"E
C60	5°22'57"	285.00'	26.77'	26.76'	S13°48'54"W



SEE SHEET 5

MATCH LINE

TRACT 303
104192 SF
WETLAND, PRIVATE
DRAINAGE &
FLOWAGE EASEMENT

SEE SHEET 6

MATCH LINE

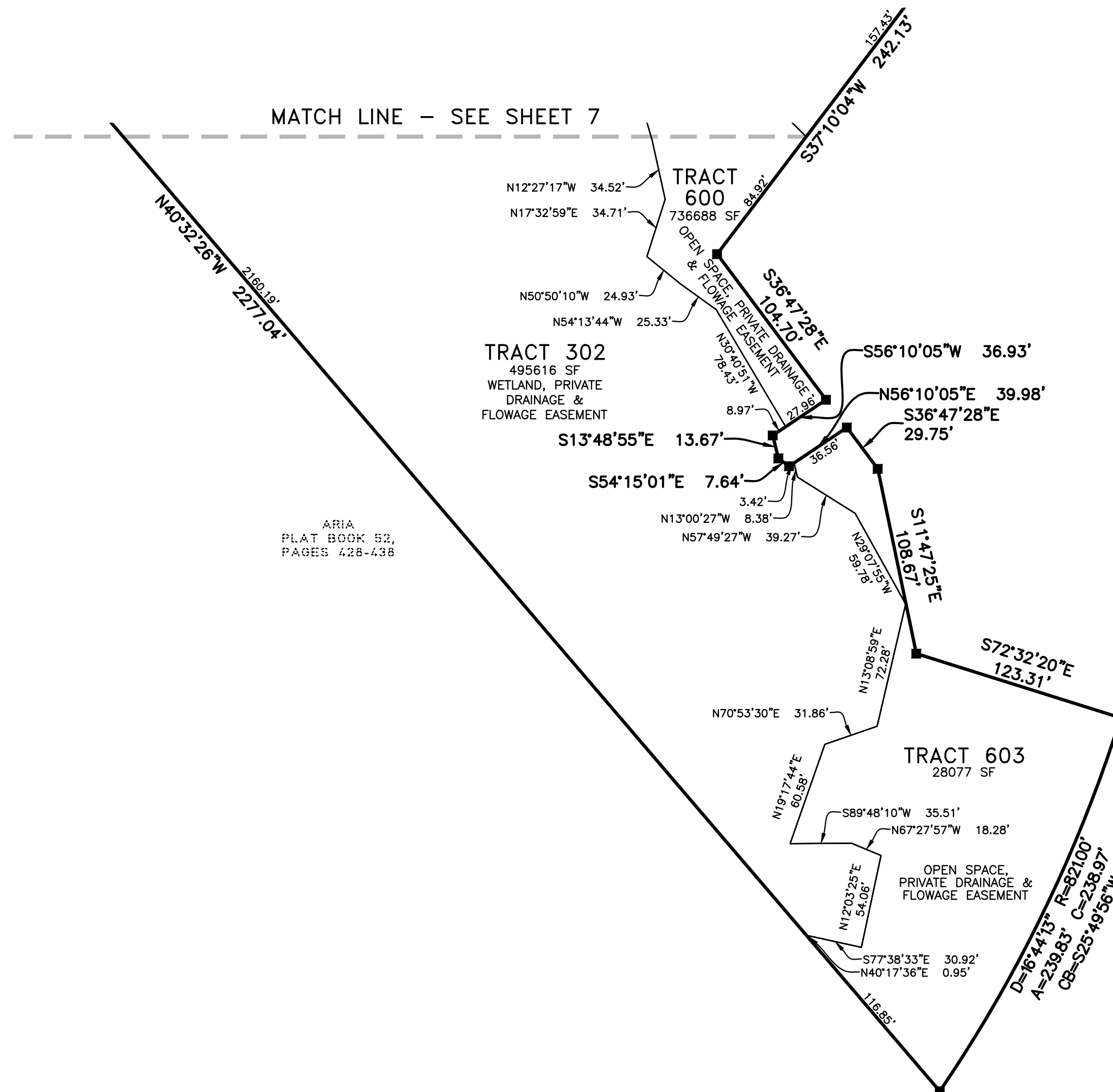
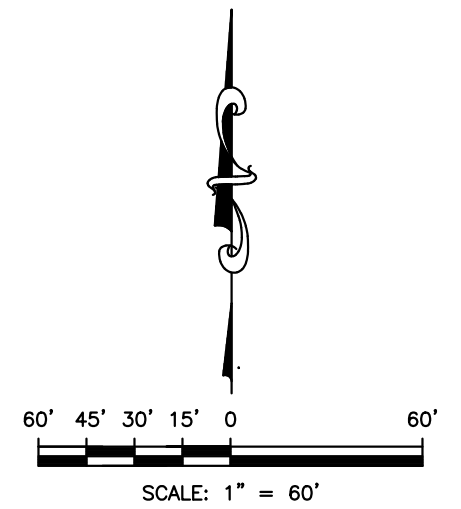
SEE SHEET 9

PLAT BOOK _____ PAGE _____
SHEET 7 OF 9
CIELO
A SUBDIVISION
IN SECTION 35, TOWNSHIP 38
SOUTH, RANGE 19 EAST
CITY OF VENICE, SARASOTA
COUNTY, FLORIDA

LEGEND
● = 1/2" CAPPED IRON ROD FOUND—LB #6638
■ = 1/2" CAPPED IRON ROD SET—P.R.M. LB #7384
○ = 1/2" CAPPED IRON ROD SET—LB #7384
△ = NAIL & DISK SET—P.C.P. LB #7384
SF = SQUARE FEET R = RADIUS
D = DELTA A = ARC C = CHORD
CB = CHORD BEARING (R) = RADIAL LINE
P.R.M.=PERMANENT REFERENCE MONUMENT
= BREAK POINT

POINT BREAK SURVEYING, LLC
CERTIFICATE OF AUTHORIZATION LB 7384
8111 BLAIKIE COURT, SUITE E
SARASOTA, FL 34240
PHONE: (941) 378-4797
FAX: (941) 378-0058
POL

CIELO
A SUBDIVISION
IN SECTION 35, TOWNSHIP 38
SOUTH, RANGE 19 EAST
CITY OF VENICE, SARASOTA
COUNTY, FLORIDA

**LEGEND**

- = 5/8" CAPPED IRON ROD FOUND—LB #6638
- = 5/8" CAPPED IRON ROD SET—P.R.M. LB #7384
- = 5/8" CAPPED IRON ROD SET— LB #7384
- △ = NAIL & DISK SET—P.C.P. LB #7384
- SF = SQUARE FEET R = RADIUS
- D = DELTA A = ARC C = CHORD
- CB = CHORD BEARING (R) = RADIAL LINE
- P.R.M.=PERMANENT REFERENCE MONUMENT
- = BREAK POINT

