

**VENETIAN GOLF & RIVER CLUB - PHASE 3F  
2013 APPROVED LANDSCAPE PLAN**

*(AS APPROVED BY CITY COUNCIL IN 2013 CONSISTING OF ONE (1) SHEETS: LS-1.)*

## Phase 3 Tree Requirements

PROJECT LOT AREA: 578,000 SF OF LOT AREA

1 TREE REQUIRED PER 2000 SF OF LOT AREA = 289 TREES REQUIRED

TREES PROVIDED:

55	LIVE OAKS
15	MAGNOLIAS
61	EAGLESTON HOLLIES
(24)	SABAL PALMS (count as 8 trees)
150	BALD CYPRESS
<b>289</b>	

TOTAL TREES PROVIDED

Tree locations are approximate and may be shifted in the final design or to avoid utilities and driveways or to enhance the project. Final design may exceed this design in scope, size, and species as long as all minimums requirements are met. Tree locations may change, but shall not be placed in preserve areas.

- Live Oak – *Quercus virginiana*, Min. 2" Caliper, 8' OA Ht, 25 Gallon pot.
- Magnolia – *Magnolia grandiflora*, Min. 2" Caliper, 8' OA Ht, 25 Gallon pot.
- ✱ Medjool Palm – *Phoenix dactylifera* 'Medjool', Min 8'ct,
- Eagleston Holly – *Ilex x attenuata* 'Eagleston', Min. 2" Caliper, 8' OA Ht, 25 Gallon pot.
- Sabal Palm – *Sabal palmetto*, Min 8'ct, heights to vary to 14'
- *Taxodium distichum* – Bald Cypress, Min 2" caliper, 8' OA Ht., 25 Gallon pot

Buffers are not required since all sides of proposed internal development are bordered by preserves and lakes.

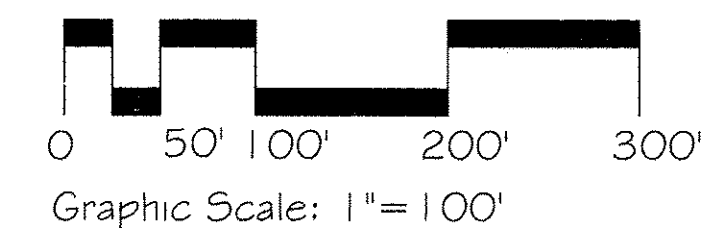
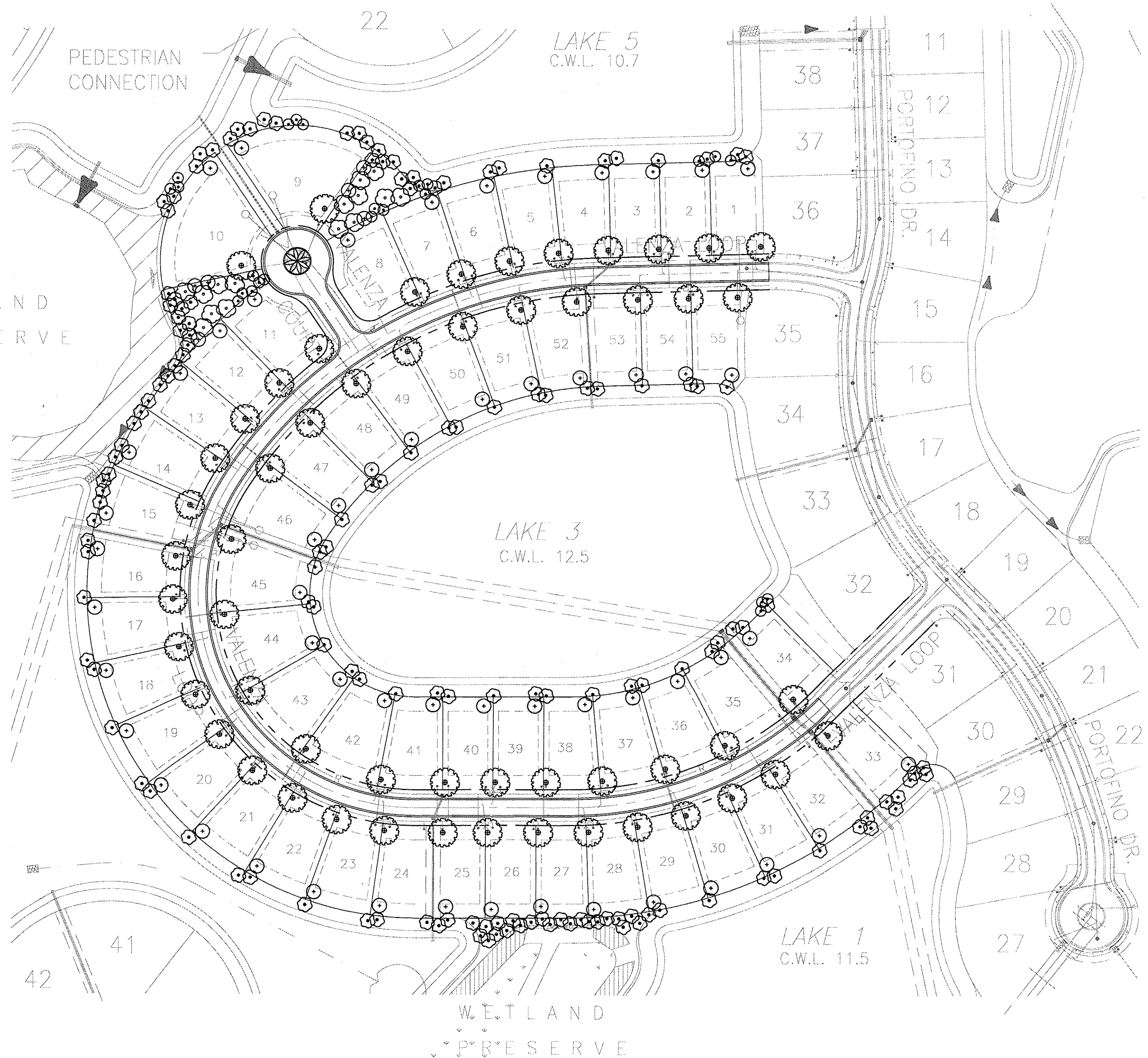
Tree Removal and Protection Permits – N/A  
There are no trees present at proposed development areas.

Single Family Tree Requirement –  
4 Trees per lot required x 55 lots = 220 Trees required  
55 Street Trees and 55 rear lot trees shown on properties leaves 110 Remaining trees to be planted on lots, or 2 trees per lot in addition to trees shown.

3 Tree species required, no more than 50% of one variety

Street Trees shall be set 3' from all property lines and 8' from ROW line, and 6' from County Utility lines. Trees placed as Street Trees in this phase are not required to be located as Street Trees, but can be repositioned as lot requirement trees if developer so desires.

NOTE:  
ALL TREES AND SHRUBS ARE TO BE A MINIMUM OF FLORIDA #1 AS DEFINED IN THE "GRADES AND STANDARDS FOR FLORIDA NURSERY PLANTS" AND MUST FOLLOW THE SPECIFICATIONS ON THE ACCOMPANYING SHEET. IRRIGATION IS TO BE 100% HEAD TO HEAD COVERAGE, INCORPORATING DRIP OR LOW VOLUME HEADS WHERE POSSIBLE.



REV	DATE	DESCRIPTION

**Venetian Golf & River Club - Phase 3**  
SARASOTA COUNTY, FLORIDA

CODE MINIMUM LANDSCAPE REQUIREMENTS

LS-1

DRAWN BY: dan  
CHECKED BY: dan  
DATE: 6.28.13  
DWG#: 000  
SCALE: AS NOTED  
SHEET: 1

**WCI**  
Developer

WCI Communities, Inc.

200 CLUBHOUSE DRIVE SUN CITY CENTER, FLORIDA, 3573  
813-904-5511

**NLD**

NOVAKOVICH LAND DESIGN

DANIEL A. NOVAKOVICH  
FL. REG. LANDSCAPE ARCHITECT NO. 1457  
SARASOTA, FLORIDA  
TEL: 239-250-9505  
FAX: 239-250-9506  
WWW.NOVAKOVICH.COM

*Dan Novakovich*  
6/28/13