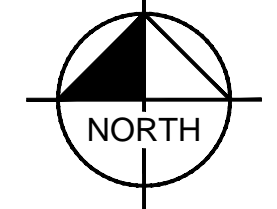


Plotted By: Shires, Cynthia (jones). Sheet Set: Venetian Golf Course - Aerial July 19, 2019 10:18:10am K:\SAR_URG\048032150 - Venetian LA Amendment\CAD\PlanSheets\Golf Course Overall Plan Sheets.dwg
This document, together with the sheets and details presented herein, as an instrument of service, is intended solely for the specific purpose and client for which it was prepared. It is not to be used for any other purpose without the written authorization and signature of Kimley-Horn and Associates, Inc. It shall be without liability to Kimley-Horn and Associates, Inc.





NORTH


GRAPHIC SCALE IN FEET

0 150 300 600

CALL 2 WORKING DAYS
BEFORE YOU DIG

IT'S THE LAW!
DIAL 811

Know what's below.
Call before you dig.

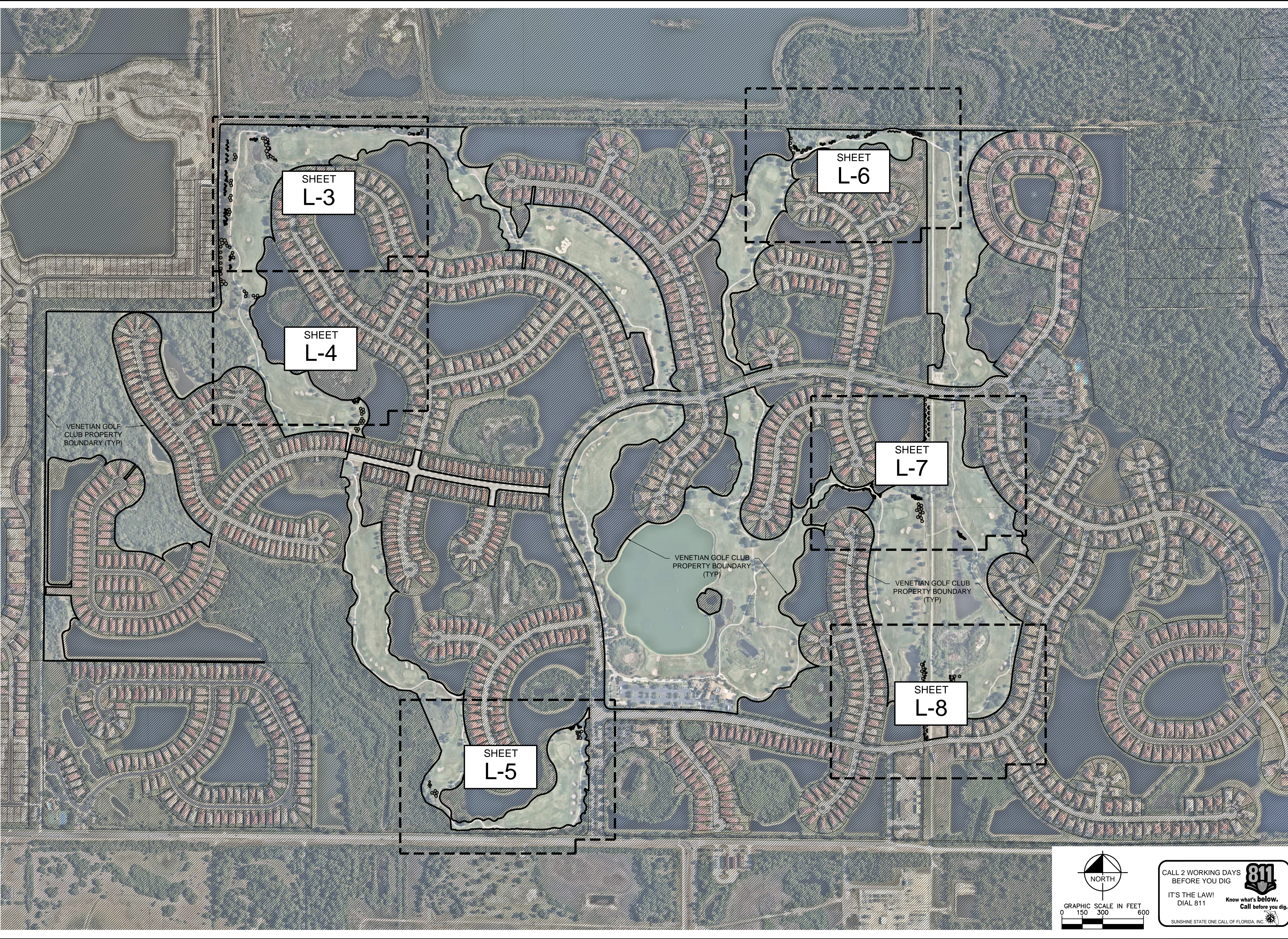


SUNSHINE STATE ONE CALL OF FLORIDA, INC.

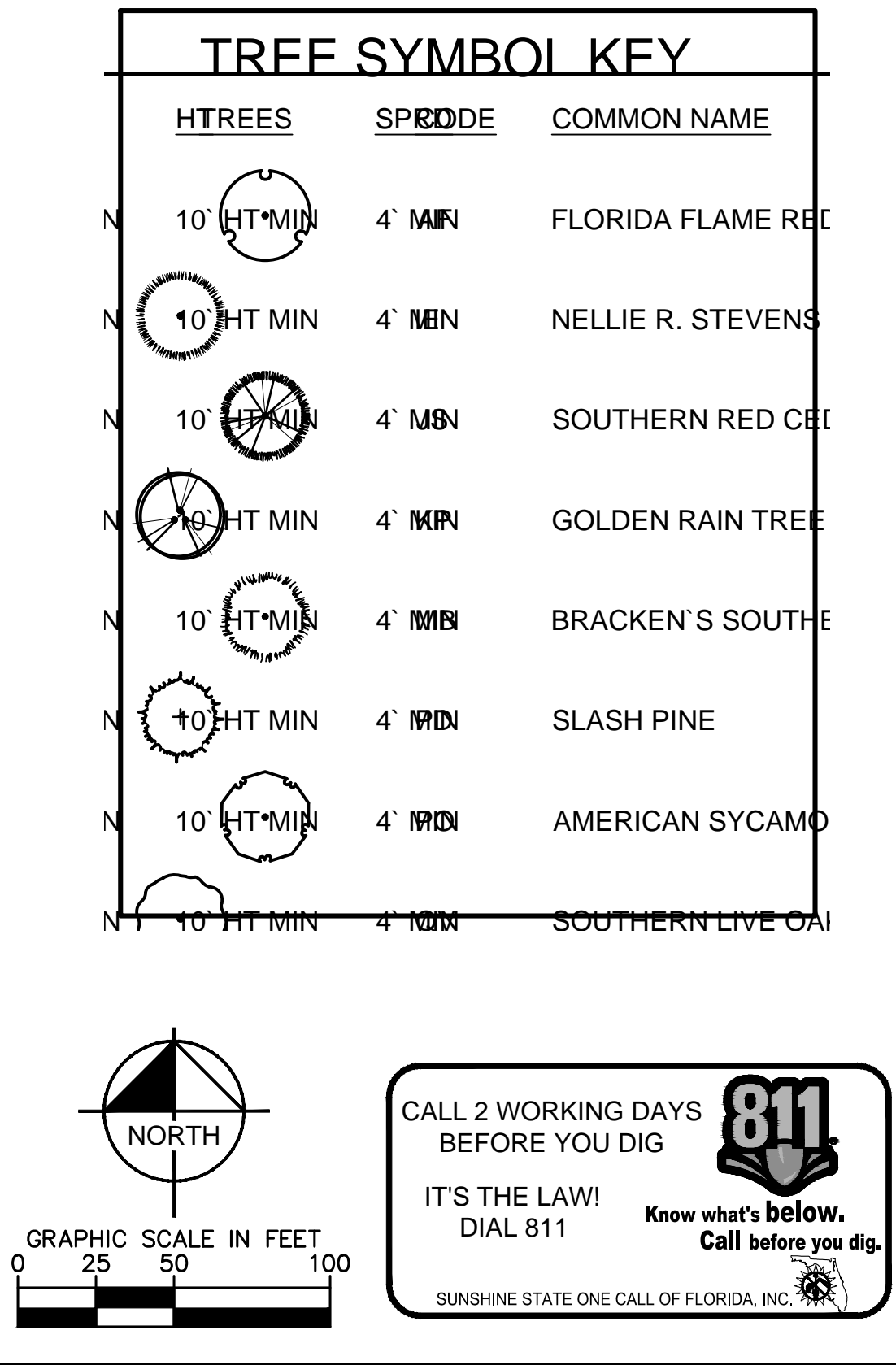
VENETIAN GOLF & RIVER CLUB - VENETIAN GOLF CLUB PREPARED FOR LENNAR HOMES		CITY OF VENICE FLORIDA		EXISTING OVERALL SITE AERIAL		KHA PROJECT 048032150		EDWARD M. DEAN, PLA		Kimley»Horn		© 2019 KIMLEY-HORN AND ASSOCIATES, INC. 1777 MAIN STREET, SUITE 200, SARASOTA, FL 34236 PHONE: 941-379-7600 WWW.KIMLEY-HORN.COM CA 00000696			
SHEET NUMBER L-1						DATE MAR 2019									
						SCALE AS SHOWN									
						DESIGNED BY EMD									
						DRAWN BY EMD									
						CHECKED BY EMD									
														REVISIONS	
														No.	
														DATE	
														BY	

Plotted By: Shires, Cynthia (jones). Sheet Set: Venetian Golf Club - Venetian LA Amendment.dwg - Layout: 0 - July 19, 2019 - 10:18:42am. K:\SAR-URG\048032150 - Venetian LA Amendment\CAD\PlanSheets\Golf Course Plan Sheets.dwg

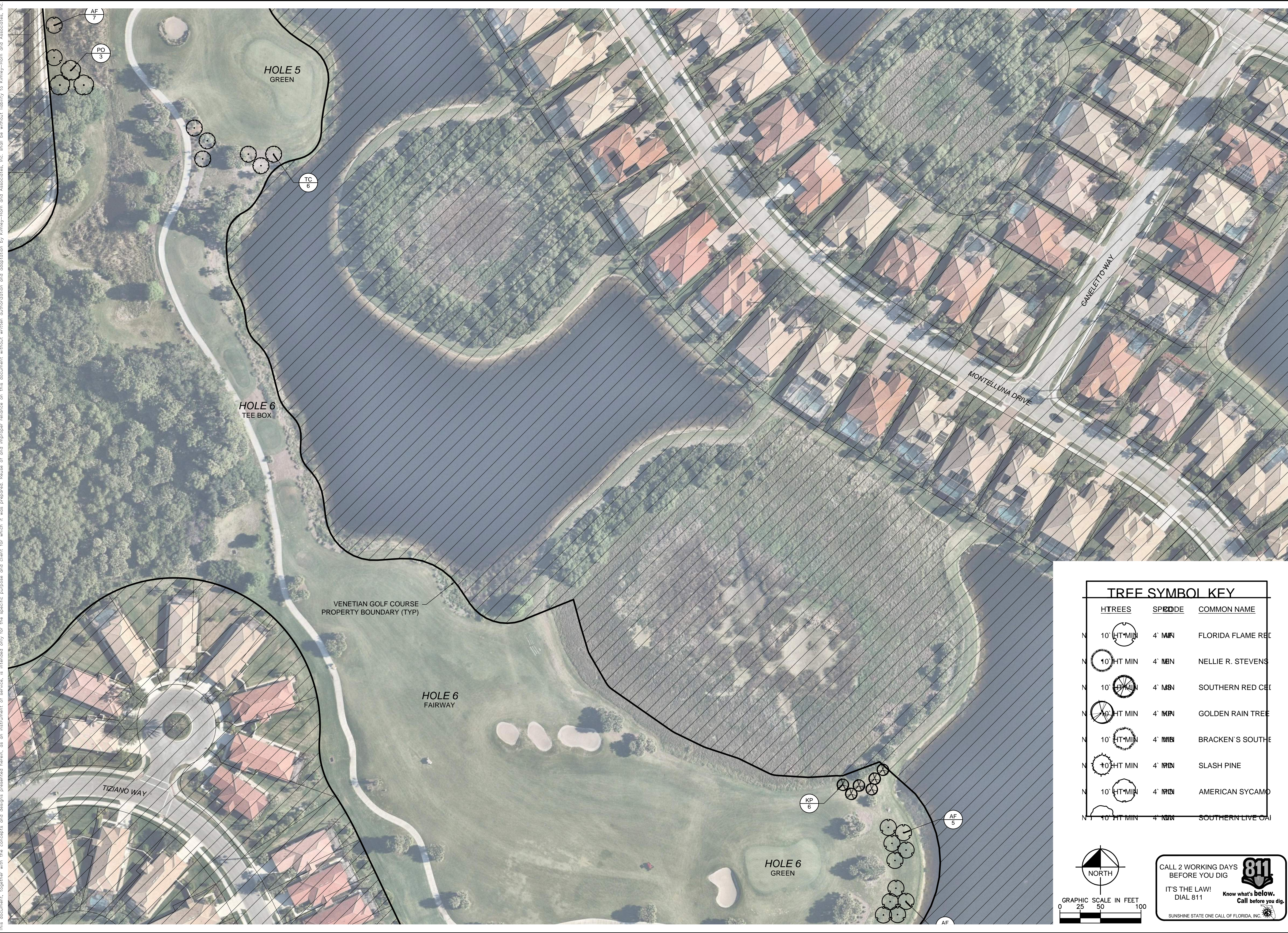
This document, together with the surveys and designs presented herein, is an instrument of service, it is intended only for the specific purpose and site for which it was prepared, made or used, and no other purpose or use, and no other reliance on this document without written authorization and validation by Kimley-Horn and Associates, Inc. shall be without liability to Kimley-Horn and Associates, Inc.



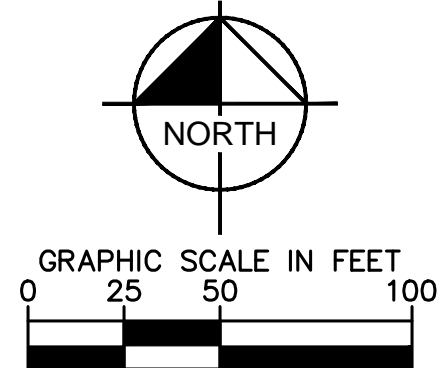
VENETIAN GOLF & RIVER CLUB - VENETIAN GOLF CLUB PREPARED FOR LENNAR HOMES		PLAN LAYOUT KEY		KHA PROJECT 048032150		EDWARD M. DEAN, PLA		Kimley»Horn			
SHEET NUMBER L-2				DATE MAR 2019		FLORIDA LICENSE NUMBER 66697269					
CITY OF VENICE				SCALE: AS SHOWN		DESIGNED BY: EMD		© 2019 KIMLEY-HORN AND ASSOCIATES, INC. 1777 MAIN STREET, SUITE 200, SARASOTA, FL 34236 PHONE: 941-379-7600 WWW.KIMLEY-HORN.COM CA 00000696			
				DRAWN BY: EMD		CHECKED BY: EMD					
										REVISIONS	
										No.	
										DATE	
										BY	

[illegible]

Plotted By: Shires, Cynthia (Jones), Sheet Set: Venetian Golf Club LA Amendment, Layout: 2, July 19, 2019, 10:19:02am, K:\SAR-URG\048032150 - Venetian LA Amendment\CAD\PlanSheets\Golf Course Plan Sheets.dwg
This document, together with the concepts and designs presented herein, is intended only for the specific purpose and client for which it was prepared. Reuse of and improper reliance on this document without written authorization and adaptation by Kimley-Horn and Associates, Inc. shall be without liability to Kimley-Horn and Associates, Inc.



TREE SYMBOL KEY		
HT	SP	COMMON NAME
10' HT MIN	4' MIN	FLORIDA FLAME REE
10' HT MIN	4' MIN	NELLIE R. STEVENS
10' HT MIN	4' MIN	SOUTHERN RED CE
10' HT MIN	4' MIN	GOLDEN RAIN TREE
10' HT MIN	4' MIN	BRACKEN'S SOUTHE
10' HT MIN	4' MIN	SLASH PINE
10' HT MIN	4' MIN	AMERICAN SYCAMO
10' HT MIN	4' MIN	SOUTHERN LIVE OAK



CALL 2 WORKING DAYS BEFORE YOU DIG

IT'S THE LAW! DIAL 811

Know what's below. Call before you dig.

SUNSHINE STATE ONE CALL OF FLORIDA, INC.

VENETIAN GOLF & RIVER CLUB
- VENETIAN GOLF CLUB
PREPARED FOR
LENNAR HOMES

CITY OF VENICE
FLORIDA

KHA PROJECT
048032150

DATE
MAR 2019

SCALE
AS SHOWN

DESIGNED BY
EMD

DRAWN BY
EMD

CHECKED BY
EMD

EDWARD M. DEAN, PLA

FLORIDA LICENSE NUMBER
66697269

DATE
7/19/2019

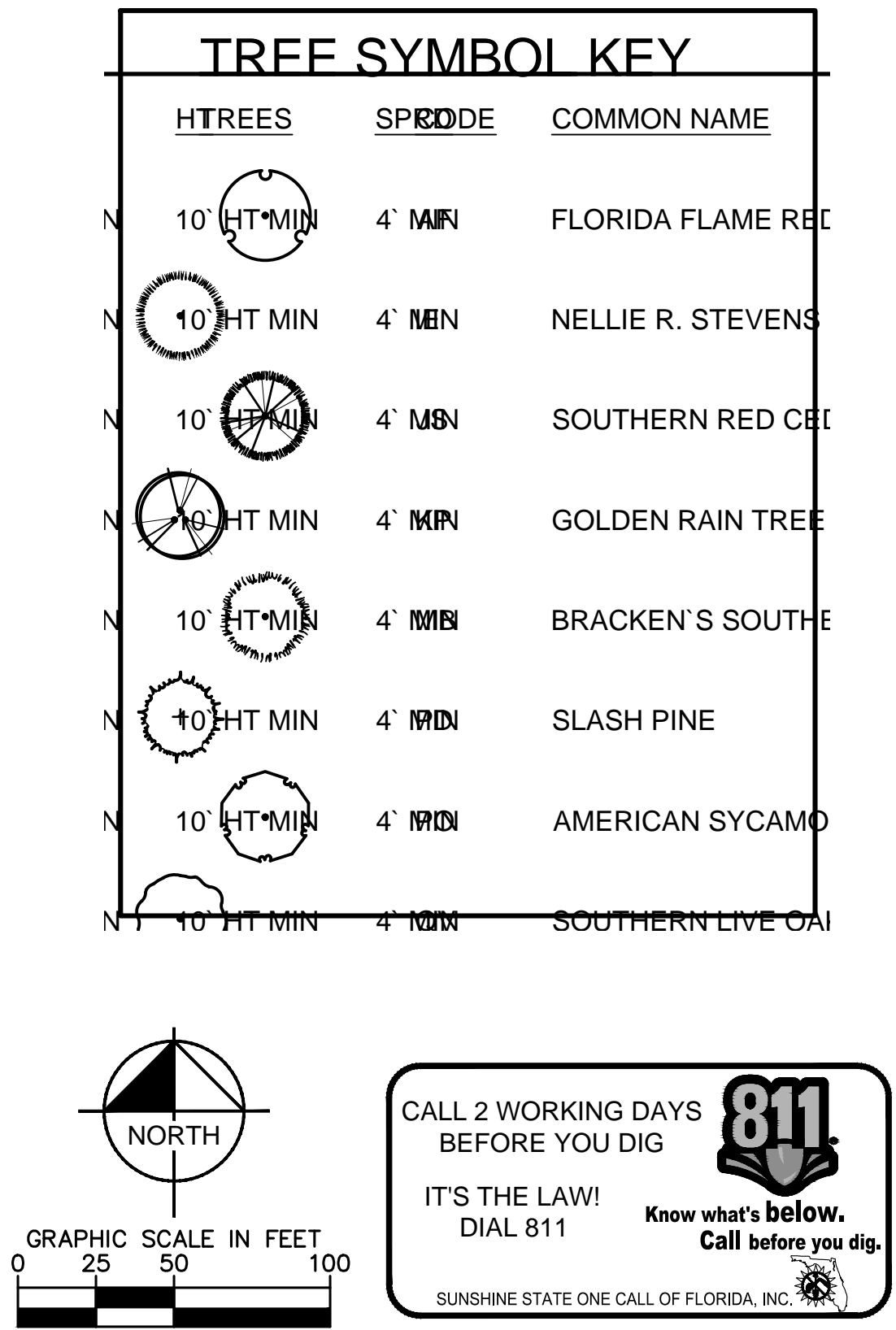
Kimley»Horn

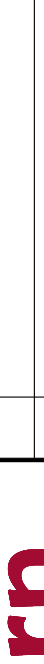
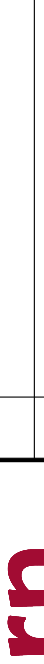
© 2019 KIMLEY-HORN AND ASSOCIATES, INC.
1777 MAIN STREET, SUITE 200, SARASOTA, FL 34236
PHONE: 941-379-7600
WWW.KIMLEY-HORN.COM CA 00000696

SHEET NUMBER
L-4


REVISIONS

NO. DATE BY

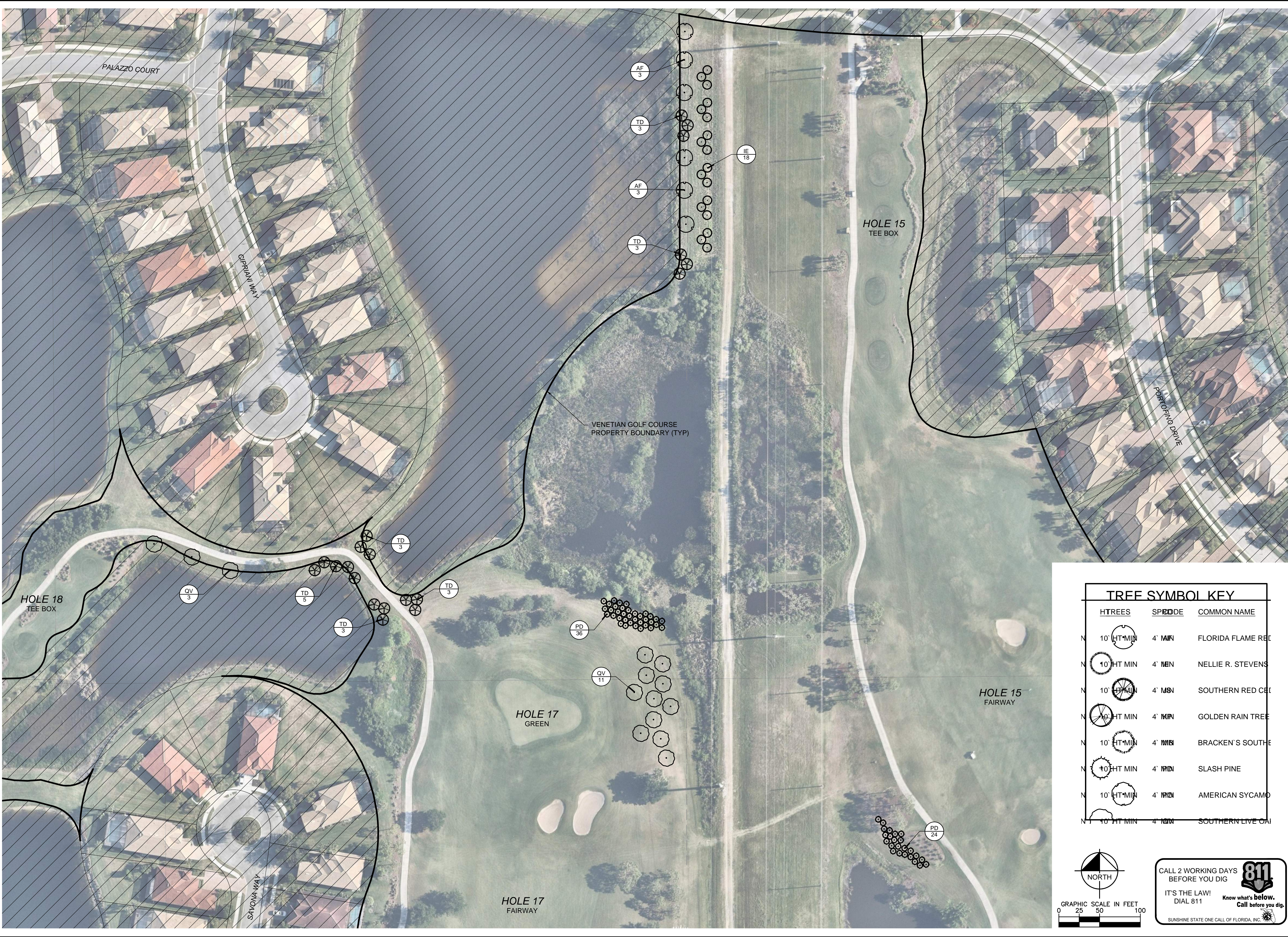


VENETIAN GOLF & RIVER CLUB - VENETIAN GOLF CLUB PREPARED FOR LENNAR HOMES		LANDSCAPE PLAN - HOLE 8 & 9		 <p>© 2019 KIMLEY-HORN AND ASSOCIATES, INC. 1777 MAIN STREET, SUITE 200, FL 34236 TALLAHASSEE, FL 32304 PHONE: 904-379-7800 WWW.KIMLEY-HORN.COM CA 00000696</p>	
CITY OF VENICE		FLORIDA		No.	
SHEET NUMBER L-5		DATE		BY	
VENETIAN GOLF & RIVER CLUB - VENETIAN GOLF CLUB PREPARED FOR LENNAR HOMES		LANDSCAPE PLAN - HOLE 8 & 9		 <p>© 2019 KIMLEY-HORN AND ASSOCIATES, INC. 1777 MAIN STREET, SUITE 200, FL 34236 TALLAHASSEE, FL 32304 PHONE: 904-379-7800 WWW.KIMLEY-HORN.COM CA 00000696</p>	
CITY OF VENICE		FLORIDA		No.	
SHEET NUMBER L-5		DATE		BY	

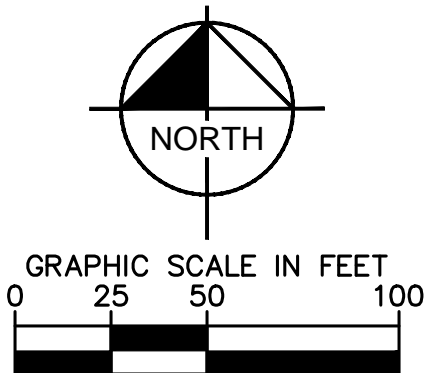


VENETIAN GOLF & RIVER CLUB - VENETIAN GOLF CLUB PREPARED FOR LENNAR HOMES CITY OF VENICE	LANDSCAPE PLAN - HOLE 12 & 13	KHA PROJECT 048032150		EDWARD M. DEAN, PLA		© 2019 KIMLEY-HORN AND ASSOCIATES, INC. 1777 MAIN STREET, SUITE 200, SARASOTA, FL 34236 PHONE: 941-379-7600 WWW.KIMLEY-HORN.COM CA 0000696	No.	REVISIONS	DATE	BY
		DATE MAR 2019								
		SCALE AS SHOWN								
		DESIGNED BY EMD								
		DRAWN BY EMD								
CHECKED BY EMD	DATE: 7/19/2019									

Plotted By: Shires, Cynthia (Jones), Sheet Set: Venetian Golf Course LA Amendment, Layout: 5, July 19, 2019, 10:19:48am, K:\SAR-URG\048032150 - Venetian LA Amendment\CAD\PlanSheets\Golf Course Plan Sheets.dwg
This document, together with the concepts and designs presented herein, is intended only for the specific purpose and client for which it was prepared. Reuse of and improper reliance on this document without written authorization and adaptation by Kimley-Horn and Associates, Inc. shall be without liability to Kimley-Horn and Associates, Inc.



TREE SYMBOL KEY		
HT	SPR	COMMON NAME
10' HT MIN	4' MIN	FLORIDA FLAME TREE
10' HT MIN	4' MIN	NELLIE R. STEVENS
10' HT MIN	4' MIN	SOUTHERN RED CEDAR
10' HT MIN	4' MIN	GOLDEN RAIN TREE
10' HT MIN	4' MIN	BRACKEN'S SOUTHERN
10' HT MIN	4' MIN	SLASH PINE
10' HT MIN	4' MIN	AMERICAN SYCAMORE
10' HT MIN	4' MIN	SOUTHERN LIVE OAK



CALL 2 WORKING DAYS BEFORE YOU DIG

IT'S THE LAW! DIAL 811

Know what's below. Call before you dig.

SUNSHINE STATE ONE CALL OF FLORIDA, INC.

VENETIAN GOLF & RIVER CLUB
- VENETIAN GOLF CLUB
PREPARED FOR
LENNAR HOMES

FLORIDA
CITY OF VENICE

LANDSCAPE PLAN
- HOLE 15 & 17

LANDSCAPE PLAN
- HOLE 15 & 17

KHA PROJECT
048032150

DATE
MAR 2019

SCALE
AS SHOWN

DESIGNED BY
EMD

DRAWN BY
EMD

CHECKED BY
EMD

EDWARD M. DEAN, PLA

FLORIDA LICENSE NUMBER
66697269

DATE
7/19/2019

Kimley»Horn

© 2019 KIMLEY-HORN AND ASSOCIATES, INC.
1777 MAIN STREET, SUITE 200, SARASOTA, FL 34236
PHONE: 941-379-7600
WWW.KIMLEY-HORN.COM CA 00000696

SHEET NUMBER
L-7

REVISIONS

NO.

DATE

BY

Plotted By: Shires, Cynthia (Jones), Sheet Set: Venetian Golf Course Plan, Streets.dwg, Layout: 6, July 19, 2019, 10:19:35am, K:\SAR-URG\048032150 - Venetian LA Amendment\CAD\Plan\Streets\Golf Course Plan Streets.dwg
This document, together with the concepts and designs presented herein, is intended only for the specific purpose and client for which it was prepared. Reuse of and improper reliance on this document without written authorization and adaptation by Kimley-Horn and Associates, Inc. shall be without liability to Kimley-Horn and Associates, Inc.



KHA PROJECT 048032150		DATE MAR 2019		SCALE AS SHOWN		DESIGNED BY EMD		DRAWN BY EMD		CHECKED BY EMD		DATE 7/19/2019					
EDWARD M. DEAN, PLA FLORIDA LICENSE NUMBER 66697269												VENETIAN GOLF & RIVER CLUB - VENETIAN GOLF CLUB PREPARED FOR LENNAR HOMES CITY OF VENICE FLORIDA					
LANDSCAPE PLAN - HOLE 16 & 17												SHEET NUMBER L-8					
Kimley»Horn © 2019 KIMLEY-HORN AND ASSOCIATES, INC. 1777 MAIN STREET, SUITE 200, SARASOTA, FL 34236 PHONE: 941-379-7600 WWW.KIMLEY-HORN.COM CA 00000696												REVISIONS		DATE		BY	

