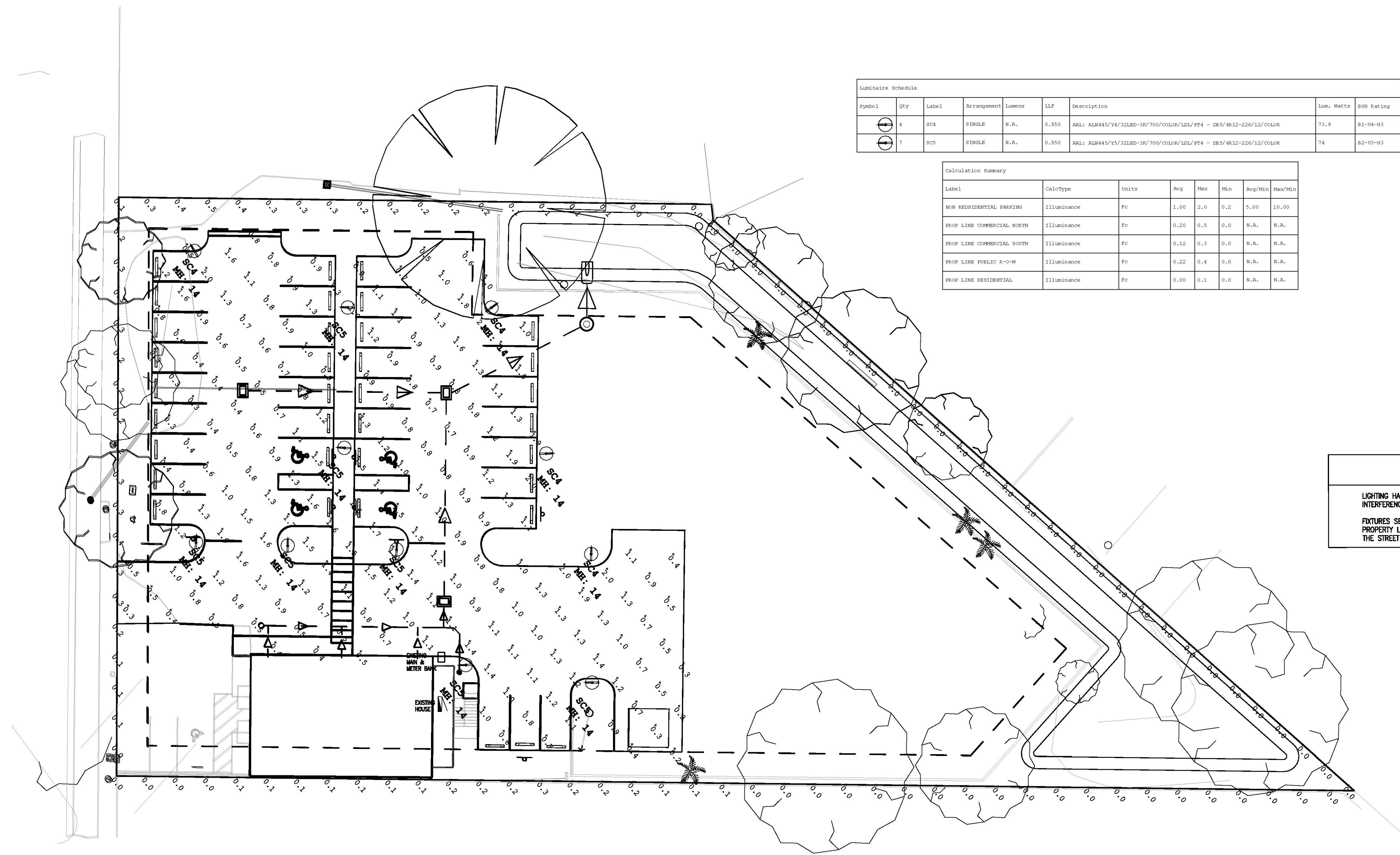


Drawing name: C:\Users\Gordon\Documents\Projects\Temp\1380A\2231_E1.00.dwg Tab: E1.00 Date Printed: Thu, 22 Aug 2019 10:40am



Luminaire Schedule							
Symbol	Qty	Label	Arrangement	Lumens	LLF	Description	Lum. Watts
	4	SC4	SINGLE	N.A.	0.950	RAI: ALN445/Y4/32LED-3K/700/COLOR/LED/PT4 - DB5/4R12-226/12/COLOR	73.9
	7	SC7	SINGLE	N.A.	0.950	RAI: ALN445/Y5/32LED-3K/700/COLOR/LED/PT4 - DB5/4R12-226/12/COLOR	74

Calculation Summary							
Label	CalcType	Units	Avg	Max	Min	Avg/Min	Max/Min
NON RESIDENTIAL PARKING	Illuminance	Fc	1.00	2.0	0.2	5.00	10.00
PROP LINE COMMERCIAL NORTH	Illuminance	Fc	0.20	0.5	0.0	N.A.	N.A.
PROP LINE COMMERCIAL SOUTH	Illuminance	Fc	0.12	0.3	0.0	N.A.	N.A.
PROP LINE PUBLIC R-O-M	Illuminance	Fc	0.22	0.4	0.0	N.A.	N.A.
PROP LINE RESIDENTIAL	Illuminance	Fc	0.00	0.1	0.0	N.A.	N.A.

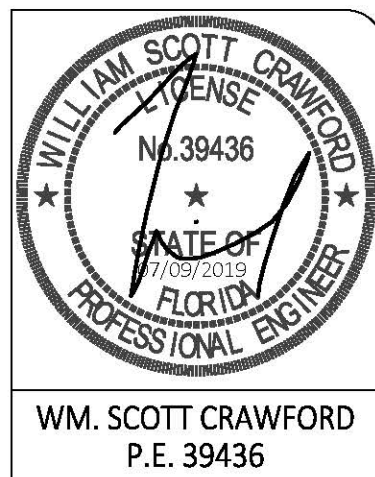
LIGHTING NOTES

LIGHTING HAS BEEN DESIGNED AND ARRANGED SUCH TO PREVENT GLARE AND INTERFERENCE ON NEARBY PUBLIC ROADS AND RESIDENTIAL PROPERTY.

FIXTURES SELECTED ARE SCREENED SUCH TO PREVENT LIGHT FROM SPILLING PAST PROPERTY LINES AND HOUSED SUCH THAT THE LIGHT SOURCE IS NOT VISIBLE FROM THE STREET OR ADJOINING PROPERTY.

ELECTRICAL SITE - PHOTOMETRIC PLAN

1 SCALE: 1/20" = 1'-0"



WM. SCOTT CRAWFORD
P.E. 39436

SHEET No.

E1.00

DATE	REVISION	BY



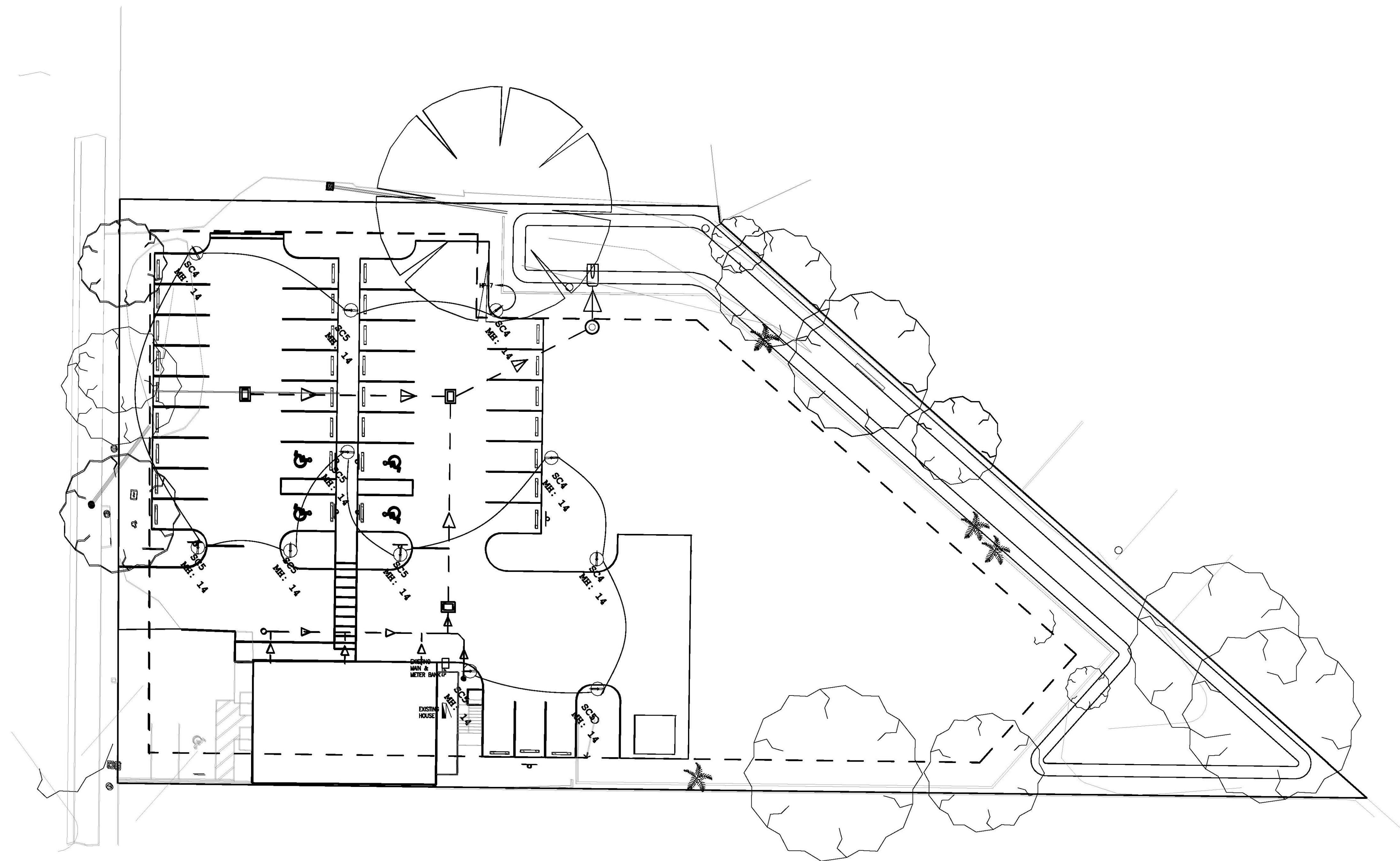
DMK ASSOCIATES
ENGINEERS ■ SURVEYORS
421 Commercial Court, Suite C Venice, Florida 34292
Phone (941)412-1293, Fax (941)412-1043
Certificate of Authorization No. 3943

DATE	02/21/18	CKD. BY	DATE
DRAWN	GAC	WSC	08/22/19
DESIGN	GAC	WSC	08/22/19
SCALE	@ 24"x36"	DMK NO.	18-0001

DUNN HAVEN HOLDINGS, LLC
925 TAMiami TRAIL S.
VENICE, FL 34285

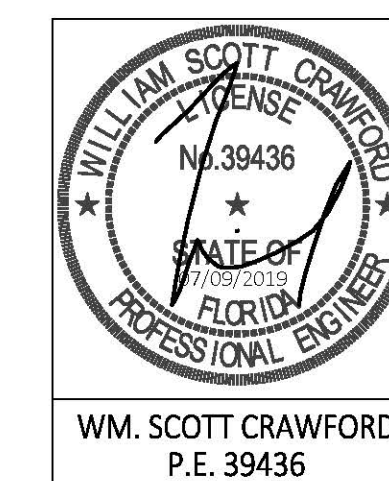
925 TAMiami TRAIL SOUTH
ELECTRICAL PHOTOMETRIC PLAN

Drawing name: C:\Users\Gobriel\Documents\Projects\Temp\1380A\2231_E1.00.dwg Tab: E1.10 Date Printed: Thu, 22 Aug 2019 - 10:40am



ELECTRICAL SITE - POWER PLAN

1 SCALE: 1/20" = 1'-0"



WM. SCOTT CRAWFORD
P.E. 39436

SHEET No.

E1.10

DATE	REVISION	BY



DMK ASSOCIATES
ENGINEERS ■ SURVEYORS
421 Commercial Court, Suite C Venice, Florida 34292
Phone (941)412-1293, Fax (941)412-1043
Certificate of Authorization No. 3943

DATE	02/21/18	CKD. BY	DATE
DRAWN	GAC	WSC	08/22/19
DESIGN	GAC	WSC	08/22/19
SCALE	@ 24"x36"	DMK NO.	18-0001

DUNN HAVEN HOLDINGS, LLC
925 TAMIAMI TRAIL S.
VENICE, FL 34285

925 TAMIAMI TRAIL SOUTH
ELECTRICAL SITE - POWER PLAN

