

# CITY OF VENICE

## TRANSPORTATION PROCESS OVERVIEW: PLANNING AND PROGRAMMING PROJECTS

September 24, 2019

# Understanding the Transportation Process:

## Planning Level –

- City of Venice Comprehensive Plan, Capital Improvement Schedule (CIS)
- MPO Long Range Transportation Plan (LRTP)
- Sarasota County Comprehensive Plan, Thoroughfare Plan

*The NE Venice Modeling Update was a Planning level project.*

## Project Level –

- City of Venice Annual Priorities (TIP\*)
- Sarasota County (TIP)
- MPO Five year TIP / Work Program

\*Not actually called TIP

# Making Sense of the Chaos

Annual  
Update  
(May 2019)

Venice  
Comprehensive Plan  
Capital Improvement  
Schedule (CIS)

MPO Long Range  
Transportation Plan  
(LRTP)

Updated  
every 5 years

Due  
December  
2019 for  
the next  
year

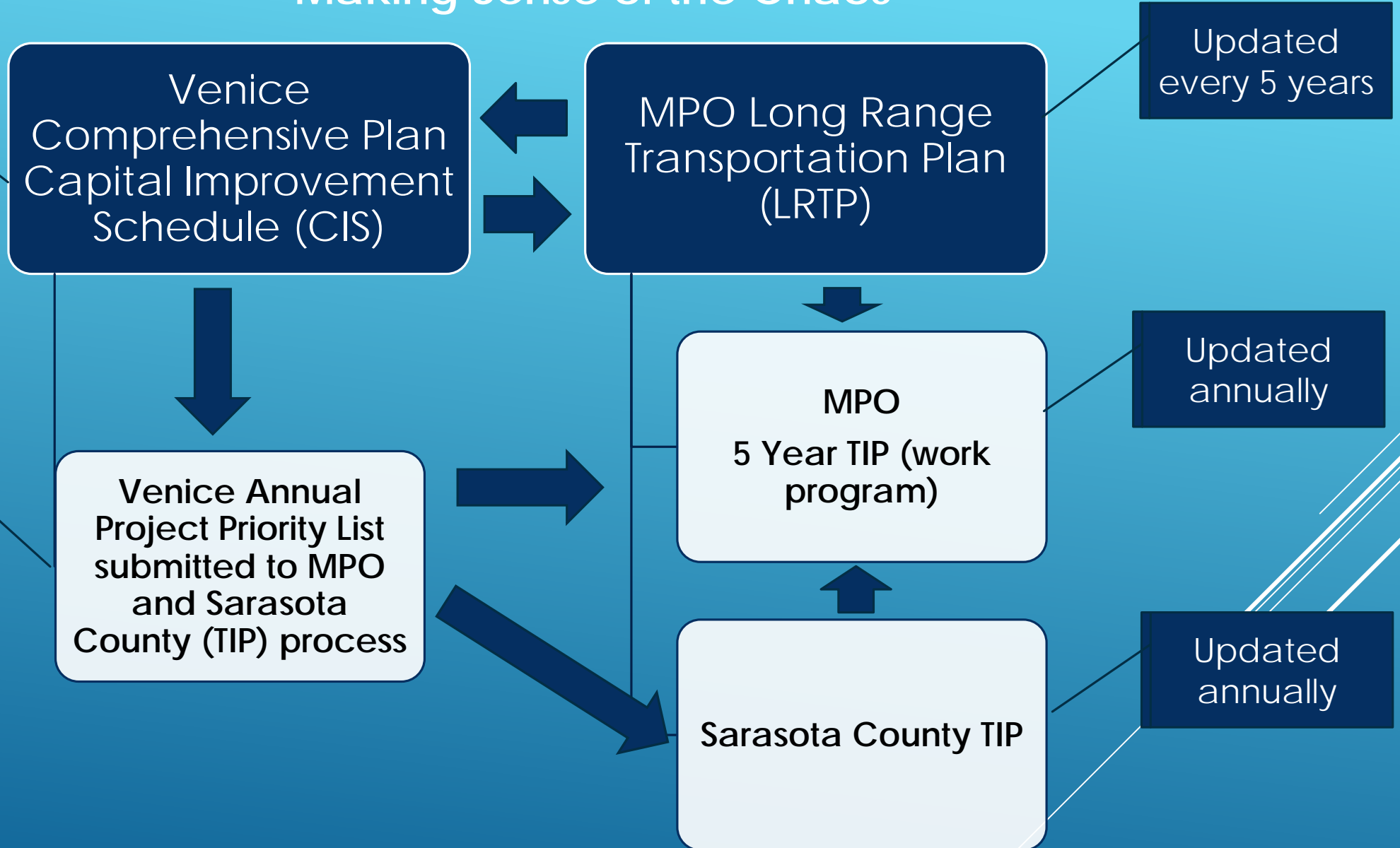
Venice Annual  
Project Priority List  
submitted to MPO  
and Sarasota  
County (TIP) process

MPO  
5 Year TIP (work  
program)

Updated  
annually

Sarasota County TIP

Updated  
annually



# HOW ARE TRANSPORTATION PROJECTS IDENTIFIED?

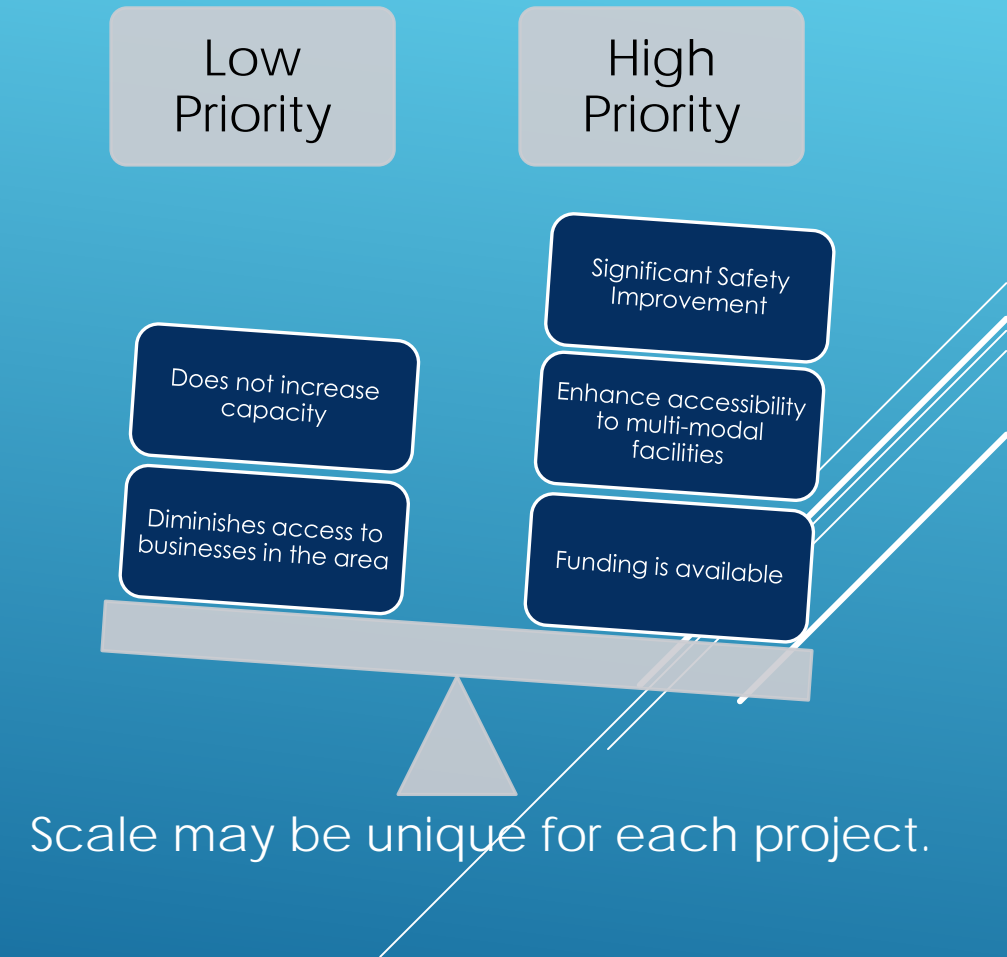
A combination of factors and data provide indicators for identification of projects. **The level of importance from one data/indicator may vary from project to project. Some important data/indicators are:**

- ▶ Data for current and projected growth rate (residential, commercial, industrial development).
- ▶ Data for annual traffic counts (five year trends) reflected by the efficiency of transportation corridors, including major arteries.
- ▶ Data for annual traffic accidents by severity and location.
- ▶ Deficient facilities - multi-modal opportunities and enhancements
- ▶ Traffic signalization and optimization (this will be key to future congestion management)
- ▶ Alternative transportation options: landscaping, beautification,...etc..
- ▶ Projects/improvements identified through local traffic studies.

# HOW ARE TRANSPORTATION PROJECTS PRIORITIZED?

Prioritizing projects may include consideration of all of the indicators for identifying a project and other factors such as (not an all inclusive list):

- ▶ Current Ranking of project on the City's CIS
- ▶ Available funding.
- ▶ Support by Sarasota County (identified in their comprehensive plan).
- ▶ Support by the MPO/FDOT (listed on the Cost Feasible Plan - LRTP).
- ▶ Support by the residents/business community.

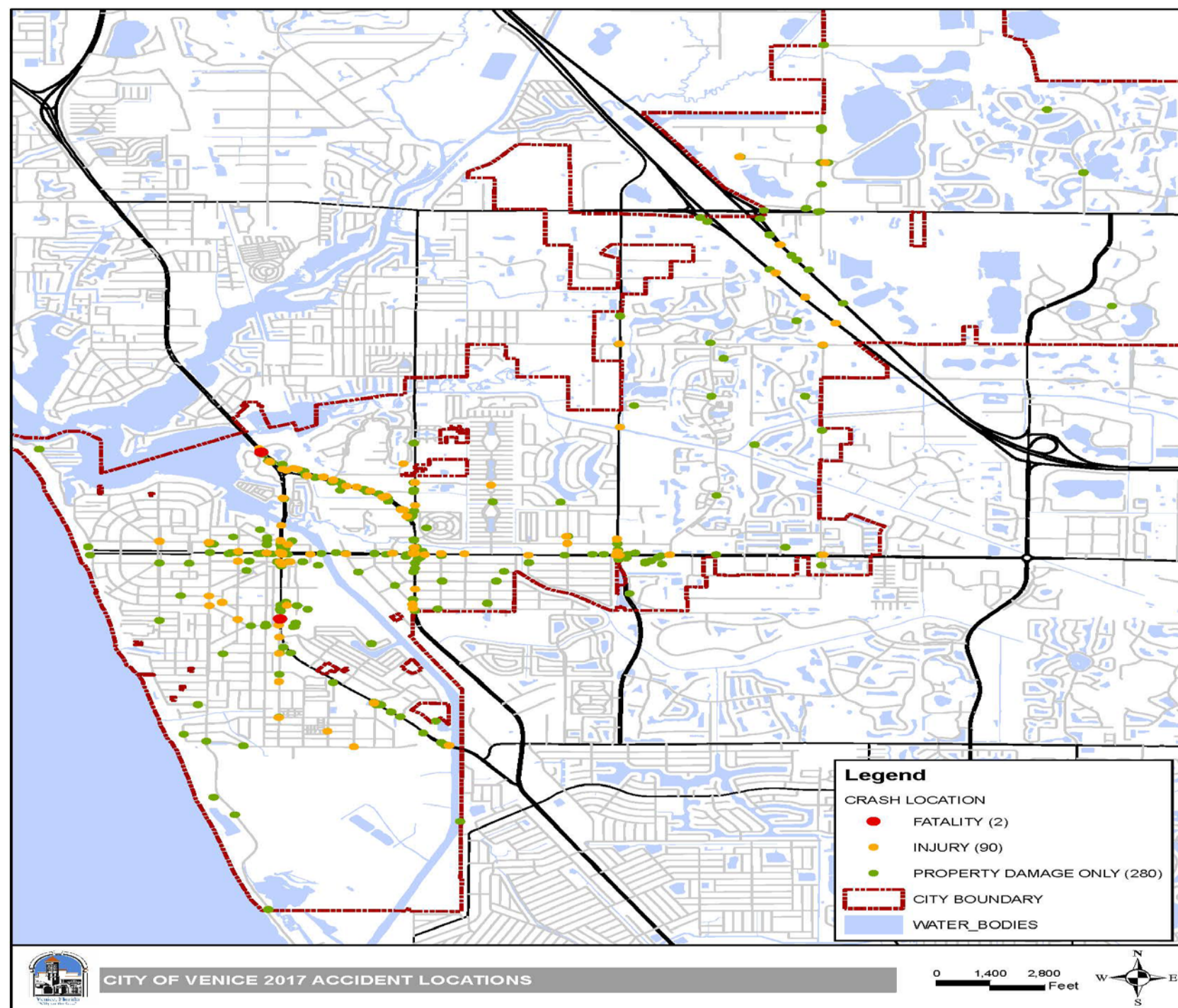


# THE DATA



# 2017 Accident Data

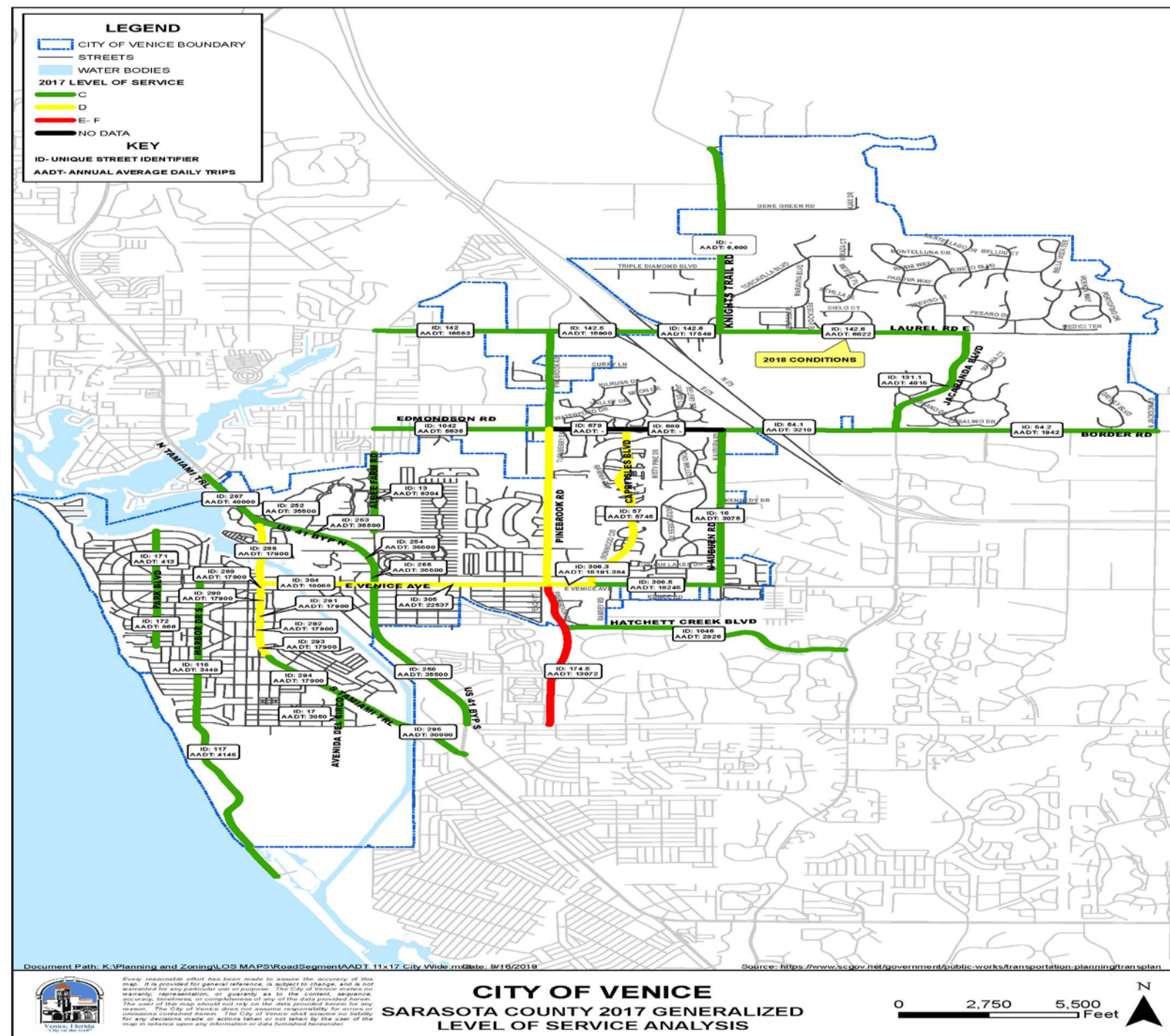
Source: Sarasota/Manatee MPO



# 2017 Traffic Count Data (City Wide)

Source: Sarasota County and Local Traffic Studies

Colors correspond to traffic count in relation to the capacity of the roadway (adopted Level of Service).



**SARASOTA COUNTY**  
**2017 GENERALIZED LEVEL OF SERVICE ANALYSIS**

**CITY OF VENICE**

ID*	Road Segments			Segment Attributes			Existing Traffic Conditions										Minimum	
	Roadway Name	Limits	Juris-diction	# of Lanes	Segm Length	Traffic Counts		Adjusted to 2017 AADT**	Adjusted to 2016 AADT**	Adjusted to 2015 AADT**	Adjusted to 2014 AADT**	Adjusted to 2013 AADT**	DHV	LOS	LOS	Srv Vol		
						Source	Volume AADT**											
13	Albee Farm Road	Colonia	Lucaya	Co./Ven	4	0.80	SC	8,304	8,304	8,739	8,782	8,848	9,126	905	C	D	3,222	
16	Auburn Road	Border	Venice	County	2	1.55	SC	3,075	3,075	2,148	2,152	2,430	1,952	341	C	D	1,197	
17	Avenida del Circo	Airport Ave	U.S. 41	Co./Ven	2	0.30	SC	3,850	3,850	4,058	3,951	3,475	3,204	427	C	D	1,264	
54.1	Border Road	Auburn	Jacaranda	County	2	1.00	SC	3,210	3,210	2,741	2,349	2,640	2,278	356	C	D	1,264	
54.2	Border Road	Jacaranda	Jackson	County	2	1.52	SC	1,942	1,942	1,722	1,477	1,515	1,212	216	C	C	1,057	
57	Capri Isles Boulevard	Venice	Border	Co./Ven	2	1.70	SC	5,745	5,745	6,164	6,002	5,844	4,670	632	D	D	998	
116	Harbor Drive	Venice Ave	Beach Rd	Co./Ven	2	1.40	SC	3,449	3,449	3,155	3,072	2,849	3,764	383	C	D	1,264	
117	Harbor Drive	Beach Rd	South of Beach Rd	Co./Ven	2	1.70	SC	3,931	4,146	3,755	3,656	3,267	6,657	456	C	D	931	
131.1	Jacaranda Boulevard	Laurel	Border	Co./Ven	2	1.16	SC	4,015	4,015	3,371	2,474	2,113	-	442	C	D	1,330	
142	Laurel Road	Albee Farm Rd	Pinebrook	County	4	1.00	SC	16,583	16,583	15,359	13,972	13,605	13,247	1,725	C	D	3,222	
142.5	Laurel Road	Pinebrook	I-75	County	4	0.50	SC	15,900	15,900	19,261	16,327	15,898	15,480	1,654	C	D	3,401	
142.6	Laurel Road	I-75	Knights Trail	County	4	0.50	SC	17,549	17,549	15,027	15,334	14,931	14,312	1,825	C	D	3,401	
142.6	Laurel Road	Knights Trail	Jacaranda	County	2	1.44	SC	17,549	6,022	15,027	15,334	14,931	14,312	1,825	C	D	1,440	
171	Park Boulevard	Bayshore	Venice	Co./Ven	2	0.55	SC	413	413	229	223	222	280	46	C	D	931	
172	Park Boulevard	Venice	Gulf	Co./Ven	2	0.70	SC	866	866	503	490	503	398	96	C	D	931	
173.5	Pinebrook Road	Laurel	Edmondson	County	4	1.00	SC	11,511	11,511	10,556	9,012	8,217	7,551	1,255	C	D	3,401	
174	Pinebrook Road	Edmondson	Venice	Co./Ven	2	1.60	SC	9,240	9,240	7,352	9,131	8,769	6,506	1,007	D	D	1,264	
174.5	Pinebrook Road	Venice	Center	Co./Ven	2	1.48	SC	13,072	13,072	12,596	12,271	11,781	8,989	1,359	E	D	1,330	
252	U.S.41 By-Pass (SR 45A)	U.S. 41	Bird Bay	FDOT/Ven	6	0.25	FDOT	35,500	35,500	39,000	39,500	37,500	37,000	3,231	C	D	5,660	
253	U.S.41 By-Pass (SR 45A)	Bird Bay	TJ Maxx Ent.	FDOT/Ven	6	0.25	FDOT	35,500	35,500	39,000	39,500	37,500	37,000	3,231	C	D	5,660	
254	U.S.41 By-Pass (SR 45A)	TJ Maxx Ent.	Albee Farm Rd	FDOT/Ven	6	0.30	FDOT	35,500	35,500	39,000	39,500	37,500	37,000	3,231	C	D	5,660	
255	U.S.41 By-Pass (SR 45A)	Albee Farm Rd	Venice Ave	FDOT/Ven	6	0.30	FDOT	35,500	35,500	39,000	39,500	37,500	37,000	3,231	C	D	5,660	
256	U.S.41 By-Pass (SR 45A)	Venice Ave	Center Rd	FDOT	4	1.60	FDOT	35,500	35,500	39,000	39,500	37,500	37,000	3,231	C	D	3,580	
287	U.S.41 (SR 45)	Colonia	U.S. 41 By-Pass	FDOT	6	0.50	FDOT	40,000	40,000	45,000	44,500	43,000	41,000	3,640	C	D	5,660	
288	U.S.41 (SR 45)	U.S. 41 By-Pass	Venice	FDOT/Ven	4	0.65	FDOT	17,900	17,900	18,600	15,000	18,300	17,200	1,862	D	D	3,066	
289	U.S.41 (SR 45)	Venice	Miami	FDOT/Ven	4	0.10	FDOT	17,900	17,900	18,600	15,000	18,300	17,200	1,862	D	D	3,066	
290	U.S.41 (SR 45)	Miami	Milan	FDOT/Ven	4	0.20	FDOT	17,900	17,900	18,600	15,000	18,300	17,200	1,862	D	D	2,920	
291	U.S.41 (SR 45)	Milan	Turin	FDOT/Ven	4	0.15	FDOT	17,900	17,900	18,600	15,000	18,300	17,200	1,862	D	D	2,920	
292	U.S.41 (SR 45)	Turin	Palermo	FDOT/Ven	4	0.15	FDOT	17,900	17,900	18,600	15,000	18,300	17,200	1,862	D	D	2,920	
293	U.S.41 (SR 45)	Palermo	San Marco	FDOT/Ven	4	0.20	FDOT	17,900	17,900	18,600	15,000	18,300	17,200	1,862	D	D	2,920	
294	U.S.41 (SR 45)	San Marco	Avenido Del Circo	FDOT	4	0.55	FDOT	17,900	17,900	18,600	15,000	18,300	17,200	1,862	C	D	3,580	
295	U.S.41 (SR 45)	Avenido Del Circo	U.S. 41 By-Pass	FDOT	4	1.10	FDOT	30,000	30,000	29,000	25,000	28,000	25,500	2,910	C	D	3,759	
304	Venice Avenue	Bus. U.S. 41	Grove	Co./Ven	4	0.75	SC	18,068	18,068	16,884	14,807	14,418	14,039	1,861	D	D	2,628	
304	Venice Avenue	Grove	U.S. 41 By Pass	Co./Ven	4	0.75	SC	18,068	18,068	16,884	14,807	14,418	14,039	1,861	D	D	2,774	
305	Venice Avenue	U.S. 41 By Pass	Cherry St	Co./Ven	4	0.80	SC	22,537	22,537	18,826	19,149	18,646	17,356	2,321	D	D	2,774	
306	Venice Avenue	Cherry St	Pinebrook	County	4	0.25	SC	16,711	16,711	17,694	19,537	19,023	17,495	1,738	D	D	2,628	
306.3	Venice Avenue	Pinebrook	Capri Isles Blvd	County	4	0.25	SC	14,792	15,191	14,792	17,803	17,335	16,029	1,580	D	D	2,774	
306.5	Venice Avenue	Capri Isles Blvd	Auburn	County	4	0.75	SC	18,245	18,245	15,872	16,811	16,369	14,888	1,879	C	D	3,222	
679	Edmondson Road	Pinebrook Rd	Capri Isles Blvd	Co./Ven	2	0.45	SC	-	-	-	-	-	-	-	N/A	D	1,197	
680	Edmondson Road	Capri Isles Blvd	Auburn Rd	Co./Ven	2	0.56	SC	-	-	-	-	-	-	-	N/A	D	931	
1042	Edmondson Road	Albee Farm Rd	Pinebrook	County	2	1.01	SC	5,635	5,635	3,315	2,933	2,769	2,489	620	C	D	1,264	
1046	Hatchet Creek Boulevard	Pinebrook Rd	Jacaranda Blvd	Co./Ven	2	1.76	SC	2,926	2,926	2,715	2,660	3,144	2,576	325	C	D	1,264	
-	Knights Trail	Laurel Rd	Rustic Rd	Co./Ven	2	1.50	SC	-	6,600	-	-	-	-	-	C	D	1,140	

\* Unique Street Identifier

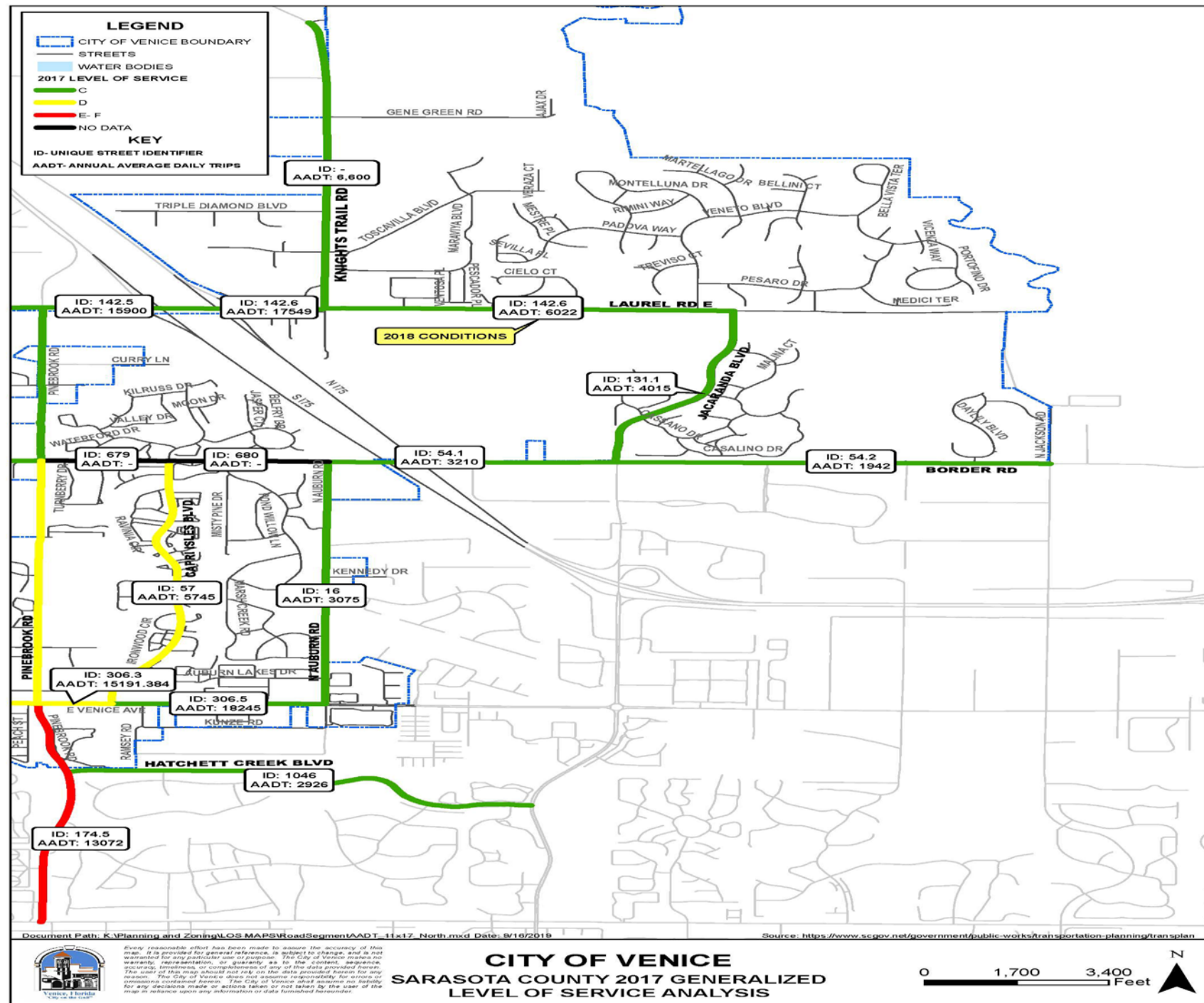
Source: <https://www.sc.gov.net/government/public-works/transportation-planning/transplan>

\*\* Annual Average Daily Trips

# 2017 Traffic County Data East Venice

Source: Sarasota County  
and Local Traffic Studies

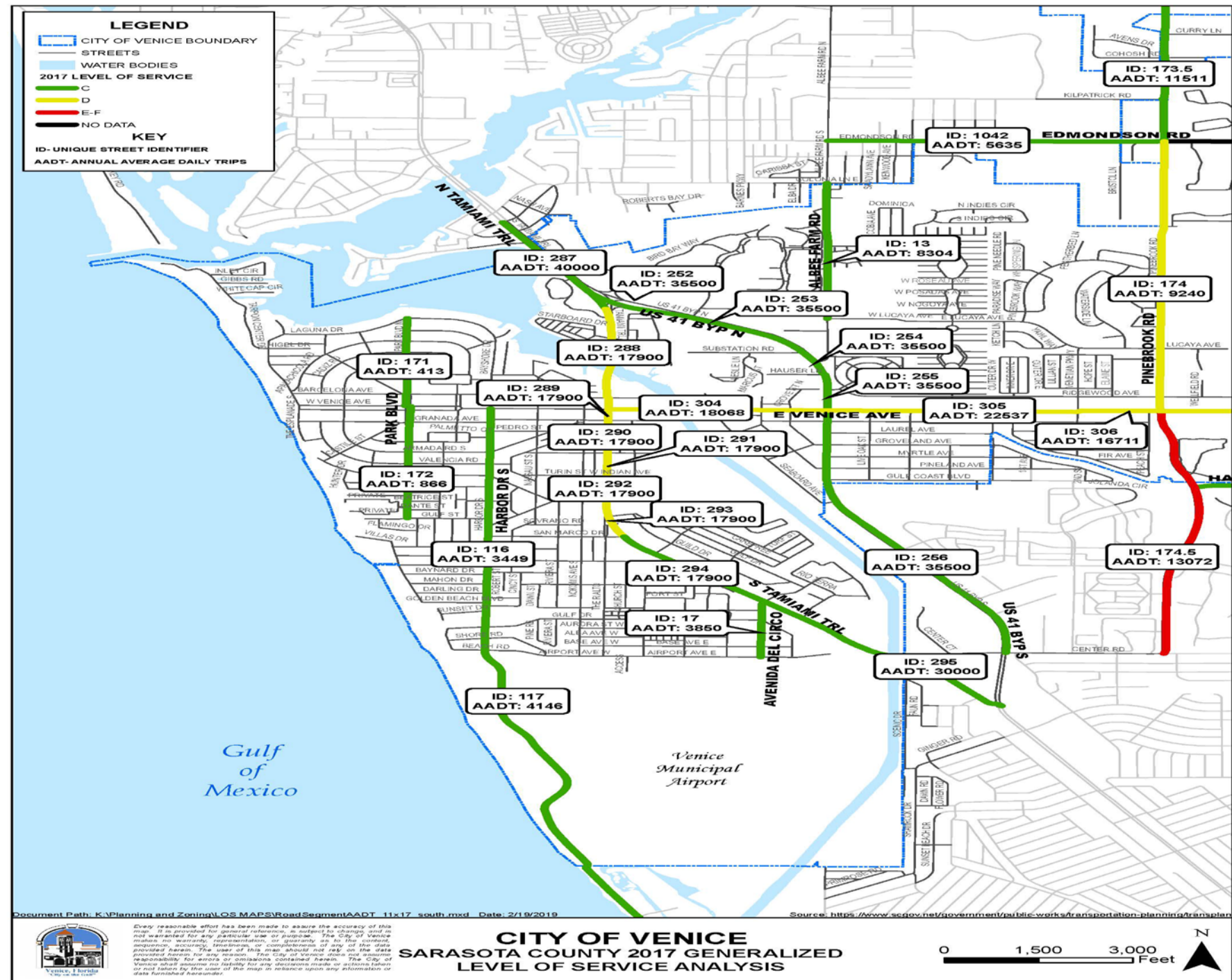
Colors correspond to  
traffic count in relation to  
the capacity of the  
roadway (adopted Level  
of Service).

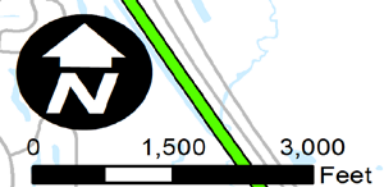


# 2017 Traffic County Data West Venice

Source: Sarasota County  
and Local Traffic Studies

Colors correspond to  
traffic count in relation to  
the capacity of the  
roadway (adopted Level  
of Service).





# L RTP Improvements (2030)

Map from July 9, 2019 City Council Presentation:  
Modeling Update - NE Venice

**LEGEND**

**L RTP Improvements (2030) LOS**

C

D

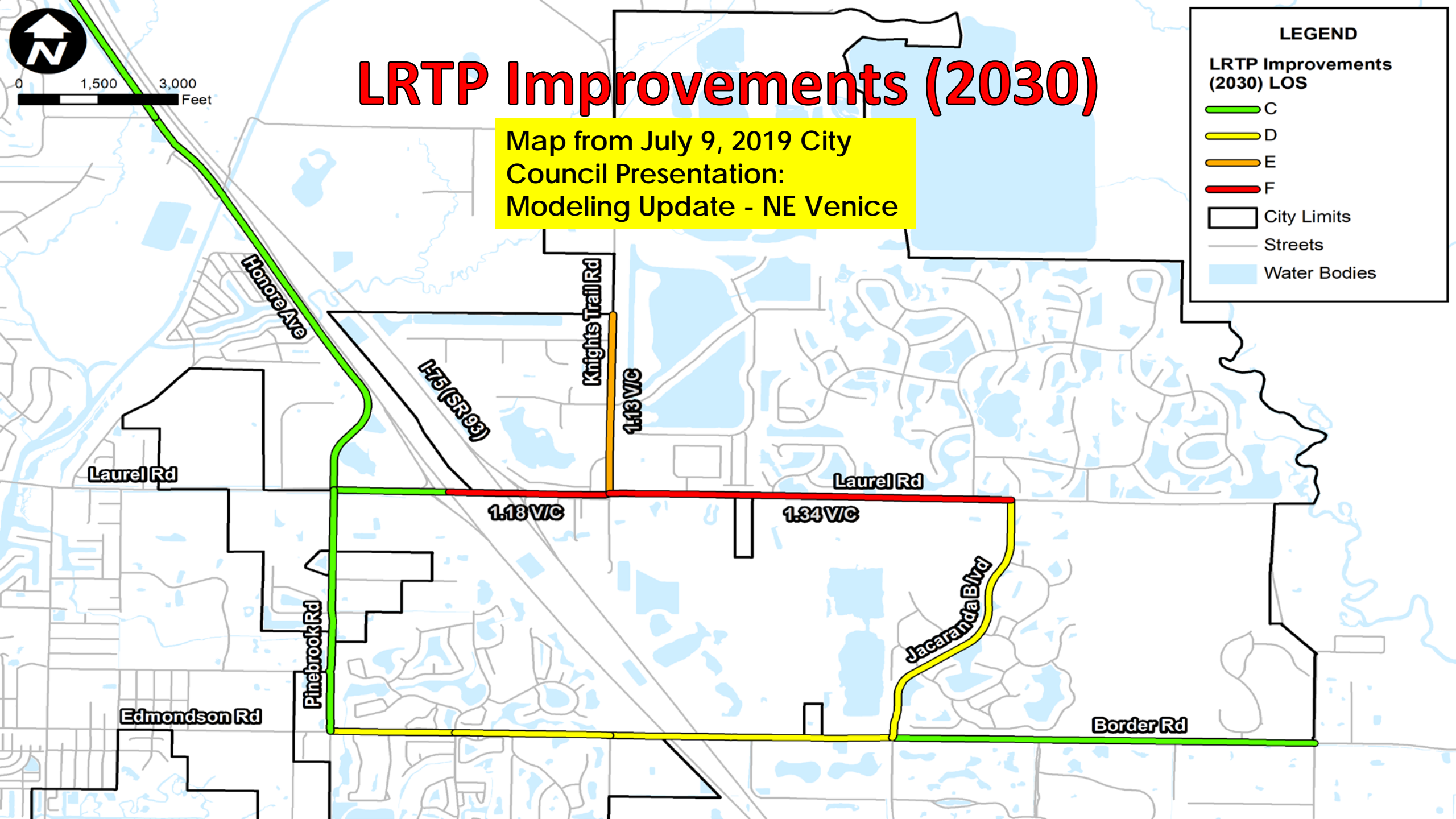
E

F

City Limits

Streets

Water Bodies



## FUNDING

- Funding may come from several sources or a combination of sources including: City funded, Mobility Fees, FDOT/Federal funding options, other.
- Through interlocal agreement the City implements Sarasota County's mobility fee system for all development with the City. To date the fee has generated the following:

FY16-17 (started collecting June 1, 2017)	\$195,489.51
FY17-18	\$705,949.64
FYTD18-19	\$1,089,114.47

- Mobility fees may be expended by Sarasota County within the district they are collected (our district includes south county and North Port)...exceptions for projects along the border of a district.

# REVIEW OF 2019 CAPITAL IMPROVEMENT SCHEDULE (CIS)

(SEE EXCERPT FROM ADOPTING ORDINANCE IN THE AGENDA PACKET)

Several thin, parallel white lines of varying lengths and orientations are positioned in the bottom right corner of the slide, creating a modern, abstract graphic element.