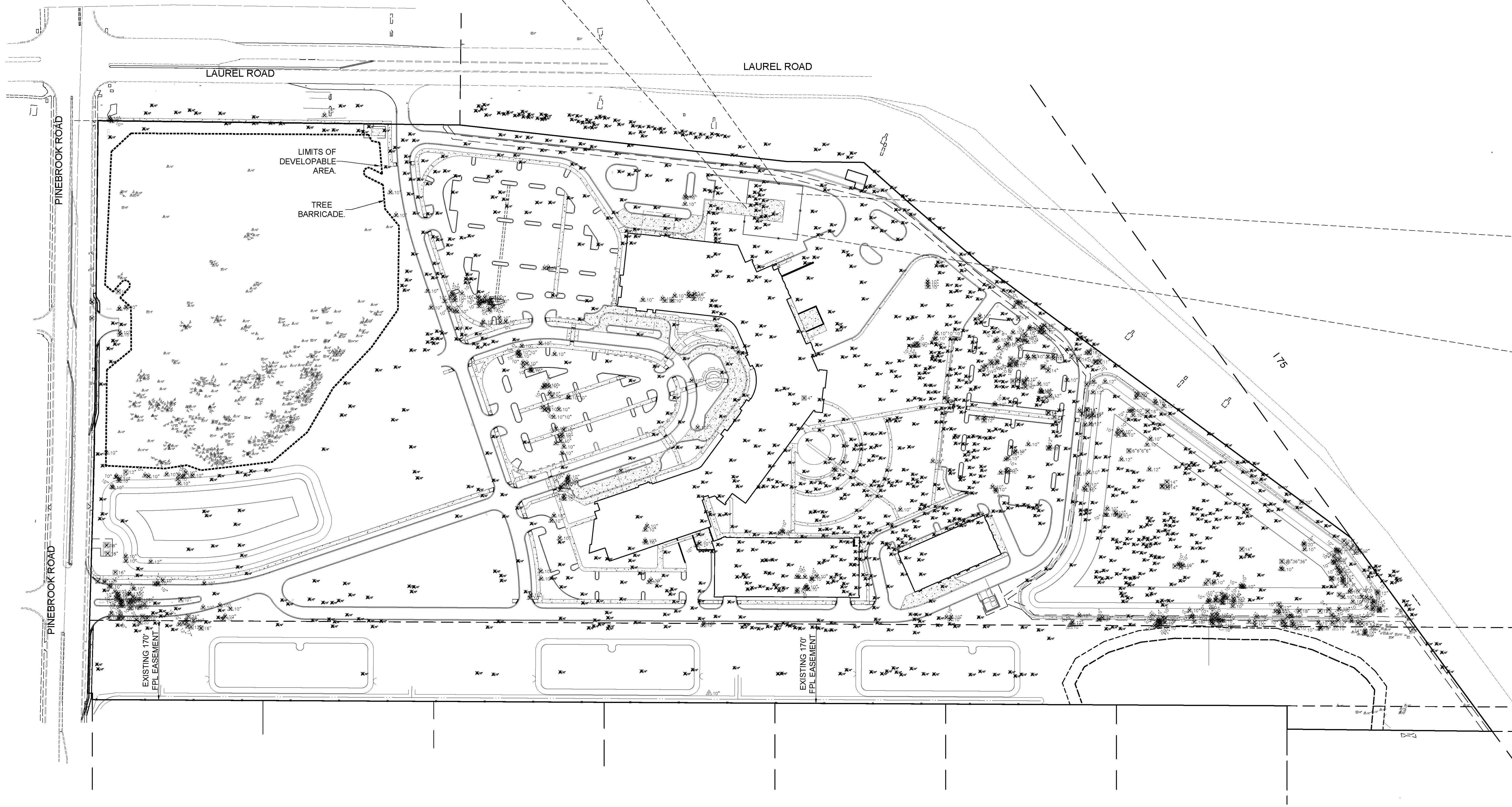
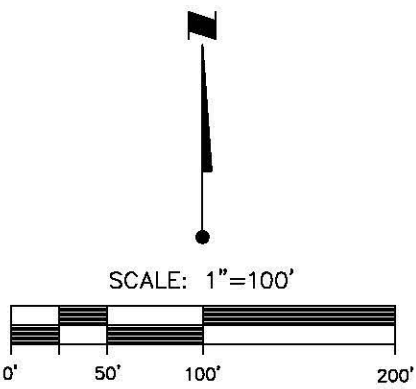
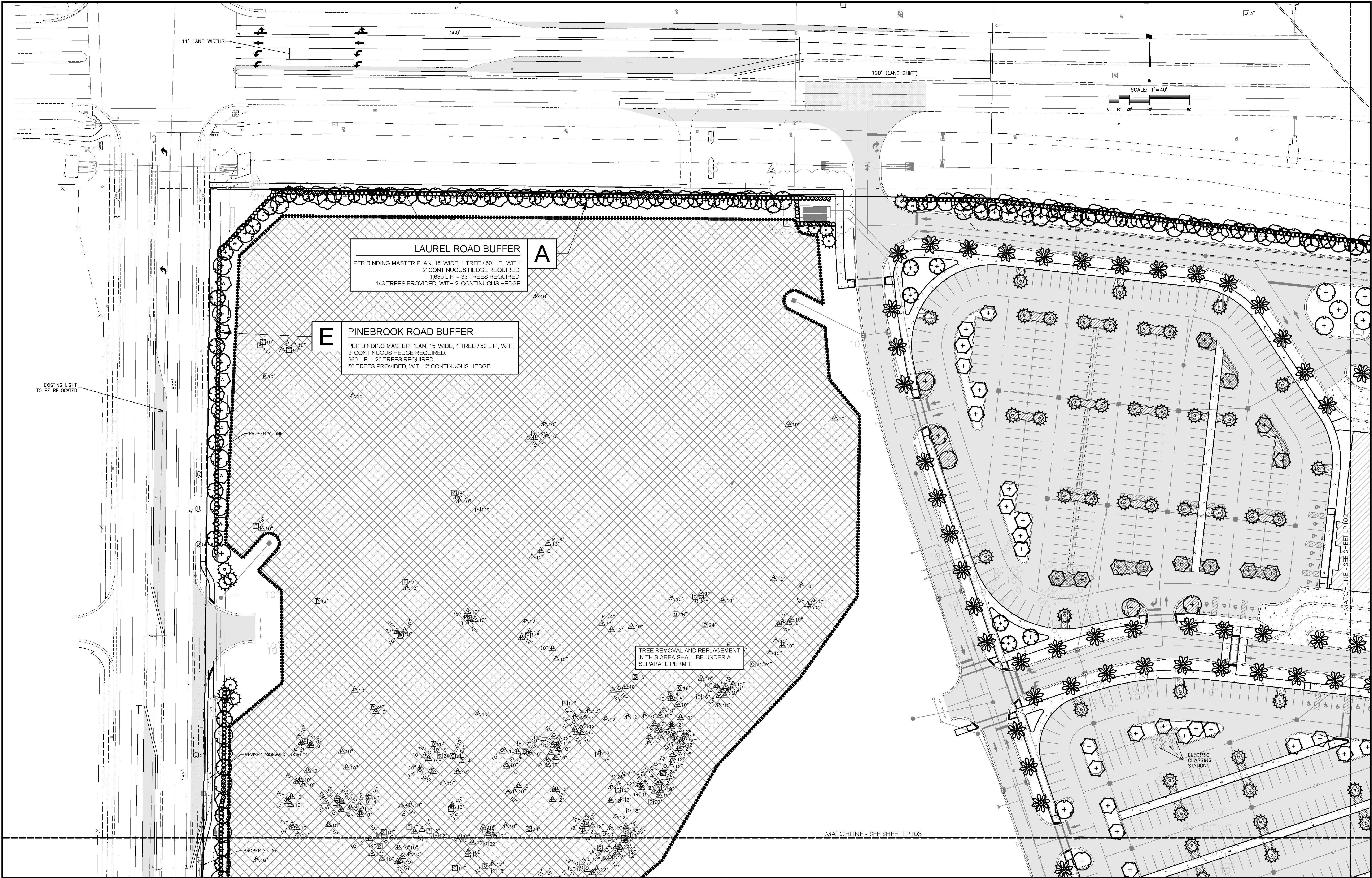


LANDSCAPE SHEET INDEX					
SHEET NUMBER	SHEET NAME	SCALE	CITY SUBMITTAL - DATE: 11.28.2018	CITY SUBMITTAL - DATE: 01.22.2019	RESPOND TO CITY COMMENTS - DATE: 02.06.2019
LP100	Landscape Key Sheet	1" = 100'	●	●	▲
TR100	Tree Removal Plan	1" = 100'	●	●	●
LP101	Landscape Plan	1" = 40'	●	●	▲
LP102	Landscape Plan	1" = 40'	●	●	●
LP103	Landscape Plan	1" = 40'	●	●	▲
LP104	Landscape Plan	1" = 40'	●	●	●
LP105	Landscape Plan	1" = 40'	●	●	●
LP501	Landscape Details	N.T.S.	●	●	●
LP601	Landscape Notes	N.T.S.	●	●	●

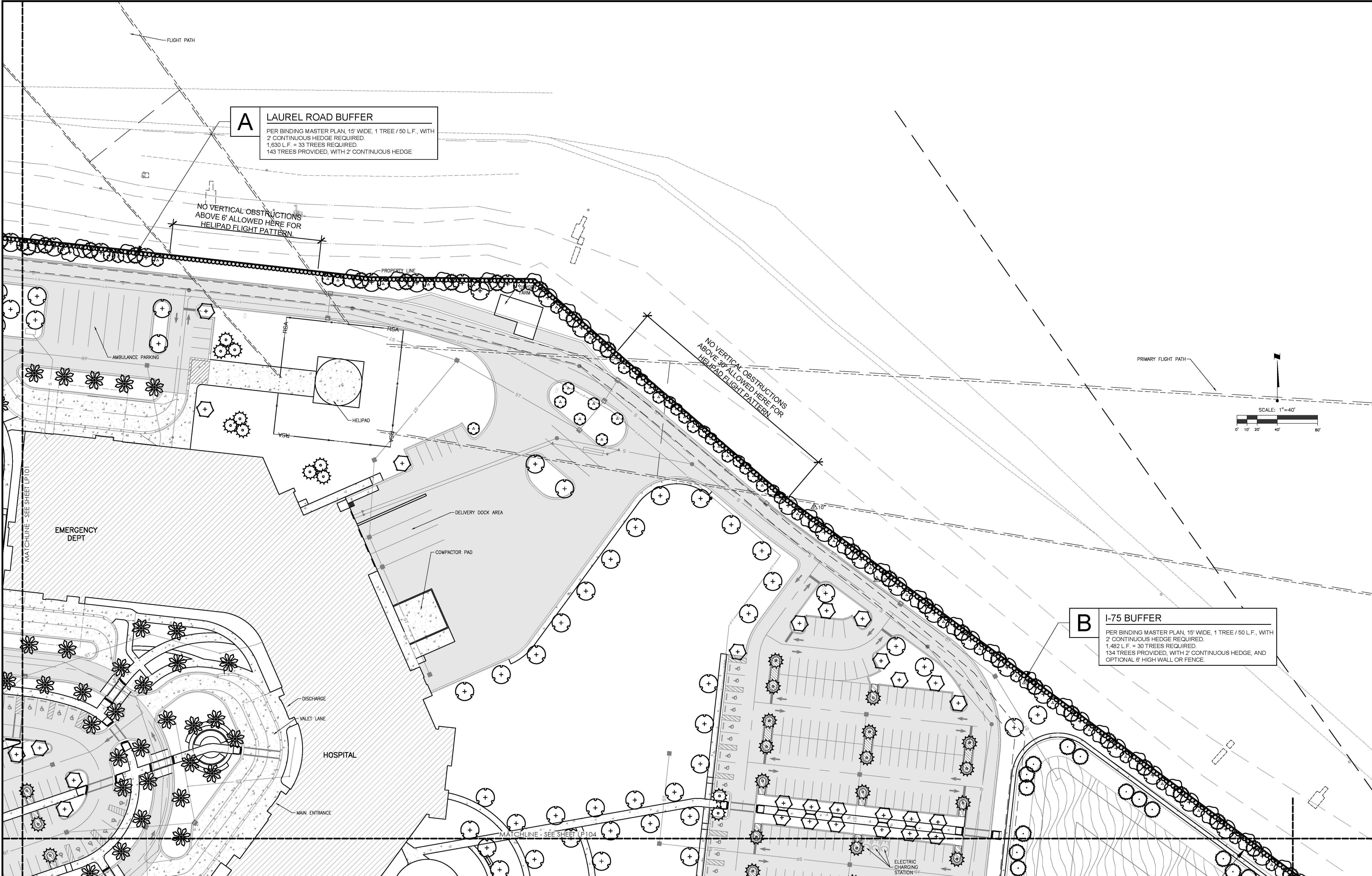
				ACTIVITY		INITIALS/EMP. NO.	DATE	 <div>Stantec</div> <div>6900 Professional Parkway East, Sarasota, FL 34240-8414 Phone 941-907-6900 • Fax 941-907-6910 Certificate of Authorization #27013 • www.stantec.com</div> <div>The Contractor shall verify and be responsible for all dimensions. DO NOT scale the drawing - any errors or omissions shall be reported to Stantec without delay. The Copyright to all designs and drawings are the property of Stantec. Reproduction or use for any purpose other than that authorized by Stantec is forbidden.</div>	CLIENT:	SARASOTA COUNTY PUBLIC HOSPITAL BOARD		DATE:	11/2018	TITLE:	NOT FOR CONSTRUCTION	
				DESIGNED BY:	TK	TK	11/2018		PROJECT:	SARASOTA MEMORIAL HOSPITAL – VENICE		HORIZONTAL SCALE:	LANDSCAPE KEY SHEET		THOMAS J. KOTKIEWICZ, L.A. FLORIDA LICENSE NO. LA0001687	
				DRAWN BY:	TK	TK				VERTICAL SCALE:			INDEX NUMBER:	215614375-002-100LP		
				CHECKED BY:					SEC:	TWP:	RGE:	CROSS REFERENCE FILE NO.:	PROJECT NUMBER:	215614375		SHEET NUMBER: LP100
				CONTRACT ADMIN. BY:												
				WM APPROVED BY:												
△REV. NO.	REVISION			DATE	DRAWN BY / EMP. NO.	CHECKED BY / EMP. NO.	WM APPROVED BY:									
B	RESPOND TO UTILITY COMMENTS			03/08/19	TK	TK										
A	RESPOND TO CITY COMMENTS			02/06/19	TK	TK										



--	--	--	--	--	--	--	--	--	--	--	--	--	--	--	--	--	--	--	--	--	--	--	--	--	--	--	--	--	--	--	--	--	--	--	--	--	--	--	--	--	--	--	--	--	--	--	--	--	--	--	--	--	--	--	--	--	--	--	--	--	--	--	--	--	--	--	--	--	--	--	--	--	--	--	--	--	--	--	--	--	--	--	--	--	--	--	--	--	--	--	--	--	--	--	--	--	--	--	--	--	--	--	--	--	--	--	--	--	--	--	--	--	--	--	--	--	--	--	--	--	--	--	--	--	--	--	--	--	--	--	--	--	--	--	--	--	--	--	--	--	--	--	--	--	--	--	--	--	--	--	--	--	--	--	--	--	--	--	--	--	--	--	--	--	--	--	--	--	--	--	--	--	--	--	--	--	--	--	--	--	--	--	--	--	--	--	--	--	--	--	--	--	--	--	--	--	--	--	--	--	--	--	--	--	--	--	--	--	--	--	--	--	--	--	--	--	--	--	--	--	--	--	--	--	--	--	--	--	--	--	--	--	--	--	--	--	--	--	--	--	--	--	--	--	--	--	--	--	--	--	--	--	--	--	--	--	--	--	--	--	--	--	--	--	--	--	--	--	--	--	--	--	--	--	--	--	--	--	--	--	--	--	--	--	--	--	--	--	--	--	--	--	--	--	--	--	--	--	--	--	--	--	--	--	--	--	--	--	--	--	--	--	--	--	--	--	--	--	--	--	--	--	--	--	--	--	--	--	--	--	--	--	--	--	--	--	--	--	--	--	--	--	--	--	--	--	--	--	--	--	--	--	--	--	--	--	--	--	--	--	--	--	--	--	--	--	--	--	--	--	--	--	--	--	--	--	--	--	--	--	--	--	--	--	--	--	--	--	--	--	--	--	--	--	--	--	--	--	--	--	--	--	--	--	--	--	--	--	--	--	--	--	--	--	--	--	--	--	--	--	--	--	--	--	--	--	--	--	--	--	--	--	--	--	--	--	--	--	--	--	--	--	--	--	--	--	--	--	--	--	--	--	--	--	--	--	--	--	--	--	--	--	--	--	--	--	--	--	--	--	--	--	--	--	--	--	--	--	--	--	--	--	--	--	--	--	--	--	--	--	--	--	--	--	--	--	--	--	--	--	--	--	--	--	--	--	--	--	--	--	--	--	--	--	--	--	--	--	--	--	--	--	--	--	--	--	--	--	--	--	--	--	--	--	--	--	--	--	--	--	--	--	--	--	--	--	--	--	--	--	--	--	--	--	--	--	--	--	--	--	--	--	--	--	--	--	--	--	--	--	--	--	--	--	--	--	--	--	--	--	--	--	--	--	--	--	--	--	--	--	--	--	--	--	--	--	--	--	--	--	--	--	--	--	--	--	--	--	--	--	--	--	--	--	--	--	--	--	--	--	--	--	--	--	--	--	--	--	--	--	--	--	--	--	--	--	--	--	--	--	--	--	--	--	--	--	--	--	--	--	--	--	--	--	--	--	--	--	--	--	--	--	--	--	--	--	--	--	--	--	--	--	--	--	--	--	--	--	--	--	--	--	--	--	--	--	--	--	--	--	--	--	--	--	--	--	--	--	--	--	--	--	--	--	--	--	--	--	--	--	--	--	--	--	--	--	--	--	--	--	--	--	--	--	--	--	--	--	--	--	--	--	--	--	--	--	--	--	--	--	--	--	--	--	--	--	--	--	--	--	--	--	--	--	--	--	--	--	--	--	--	--	--	--	--	--	--	--	--	--	--	--	--	--	--	--	--	--	--	--	--	--	--	--	--	--	--	--	--	--	--	--	--	--	--	--	--	--	--	--	--	--	--	--	--	--	--	--	--	--	--	--	--	--	--	--	--	--	--	--	--	--	--	--	--	--	--	--	--	--	--	--	--	--	--	--	--	--	--	--	--	--	--	--	--	--	--	--	--	--	--	--	--	--	--	--	--	--	--	--	--	--	--	--	--	--	--	--	--	--	--	--	--	--	--	--	--	--	--	--	--	--	--	--	--	--	--	--	--	--	--	--	--	--	--	--	--	--	--	--	--	--	--	--	--	--	--	--	--	--	--	--	--	--	--	--	--	--	--	--	--	--	--	--	--	--	--	--	--	--	--	--	--	--	--	--	--	--	--	--	--	--	--	--	--	--	--	--	--	--	--	--	--	--	--	--	--	--	--	--	--	--	--	--	--	--	--	--	--	--	--	--	--	--	--	--	--	--	--	--	--	--	--	--	--	--	--	--	--	--	--	--	--	--	--	--	--	--	--	--	--	--	--	--	--	--	--	--	--	--	--	--	--	--	--	--	--	--	--	--	--	--	--	--	--	--	--	--	--	--	--	--	--	--	--	--	--	--	--	--	--	--	--	--	--	--	--	--	--	--	--	--	--	--	--	--	--	--	--	--	--	--	--	--	--	--	--	--	--	--	--	--	--	--	--	--	--	--	--	--	--	--	--	--	--	--	--	--	--	--	--	--	--	--	--	--	--	--	--	--	--	--	--	--	--	--	--	--	--	--	--	--	--	--	--	--	--	--	--	--	--	--	--	--	--	--	--	--	--	--	--	--	--	--	--	--	--	--	--	--	--	--	--	--	--	--	--	--	--	--	--	--	--	--	--	--	--	--	--	--	--	--	--	--	--	--	--	--	--	--	--	--	--	--	--	--	--	--	--	--	--	--	--	--	--	--	--	--	--	--	--	--	--	--	--	--	--	--	--	--	--	--	--	--	--	--	--	--	--	--	--	--	--	--	--	--	--	--	--	--	--	--	--	--	--	--	--	--	--	--	--	--	--	--	--	--	--	--	--	--	--	--	--	--	--	--	--	--	--	--	--	--	--	--	--	--	--	--	--	--	--	--	--	--	--	--	--	--	--	--	--	--	--	--	--	--	--	--	--	--	--	--	--	--	--	--	--	--	--	--	--	--	--	--	--	--	--	--	--	--	--	--	--	--	--	--	--	--	--	--	--	--	--	--	--	--	--	--	--	--	--	--	--	--	--	--	--	--	--	--	--	--	--	--	--	--	--	--	--	--	--	--	--	--	--	--	--	--	--	--	--	--	--	--	--	--	--	--	--	--	--	--	--	--	--	--	--	--	--	--	--	--	--	--	--	--	--	--	--	--	--	--



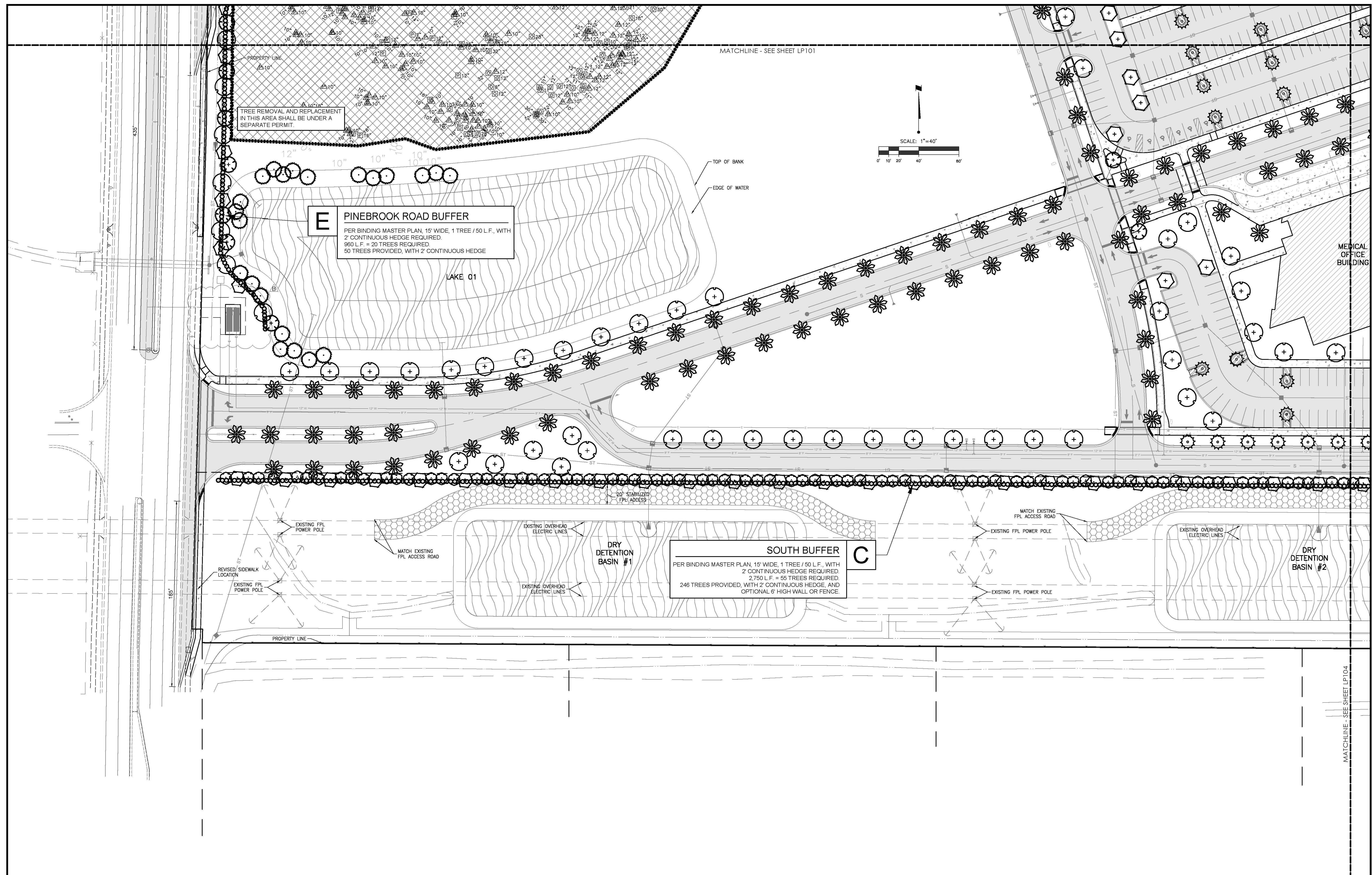
--	--	--	--	--	--	--	--	--	--	--	--	--	--	--	--	--	--	--	--	--	--	--	--	--	--	--	--	--	--	--	--	--	--	--	--	--	--	--	--	--	--	--	--	--	--	--	--	--	--	--	--	--	--	--	--	--	--	--	--	--	--	--	--	--	--	--	--	--	--	--	--	--	--	--	--	--	--	--	--	--	--	--	--	--	--	--	--	--	--	--	--	--	--	--	--	--	--	--	--	--	--	--	--	--	--	--	--	--	--	--	--	--	--	--	--	--	--	--	--	--	--	--	--	--	--	--	--	--	--	--	--	--	--	--	--	--	--	--	--	--	--	--	--	--	--	--	--	--	--	--	--	--	--	--	--	--	--	--	--	--	--	--	--	--	--	--	--	--	--	--	--	--	--	--	--	--	--	--	--	--	--	--	--	--	--	--	--	--	--	--	--	--	--	--	--	--	--	--	--	--	--	--	--	--	--	--	--	--	--	--	--	--	--	--	--	--	--	--	--	--	--	--	--	--	--	--	--	--	--	--	--	--	--	--	--	--	--	--	--	--	--	--	--	--	--	--	--	--	--	--	--	--	--	--	--	--	--	--	--	--	--	--	--	--	--	--	--	--	--	--	--	--	--	--	--	--	--	--	--	--	--	--	--	--	--	--	--	--	--	--	--	--	--	--	--	--	--	--	--	--	--	--	--	--	--	--	--	--	--	--	--	--	--	--	--	--	--	--	--	--	--	--	--	--	--	--	--	--	--	--	--	--	--	--	--	--	--	--	--	--	--	--	--	--	--	--	--	--	--	--	--	--	--	--	--	--	--	--	--	--	--	--	--	--	--	--	--	--	--	--	--	--	--	--	--	--	--	--	--	--	--	--	--	--	--	--	--	--	--	--	--	--	--	--	--	--	--	--	--	--	--	--	--	--	--	--	--	--	--	--	--	--	--	--	--	--	--	--	--	--	--	--	--	--	--	--	--	--	--	--	--	--	--	--	--	--	--	--	--	--	--	--	--	--	--	--	--	--	--	--	--	--	--	--	--	--	--	--	--	--	--	--	--	--	--	--	--	--	--	--	--	--	--	--	--	--	--	--	--	--	--	--	--	--	--	--	--	--	--	--	--	--	--	--	--	--	--	--	--	--	--	--	--	--	--	--	--	--	--	--	--	--	--	--	--	--	--	--	--	--	--	--	--	--	--	--	--	--	--	--	--	--	--	--	--	--	--	--	--	--	--	--	--	--	--	--	--	--	--	--	--	--	--	--	--	--	--	--	--	--	--	--	--	--	--	--	--	--	--	--	--	--	--	--	--	--	--	--	--	--	--	--	--	--	--	--	--	--	--	--	--	--	--	--	--	--	--	--	--	--	--	--	--	--	--	--	--	--	--	--	--	--	--	--	--	--	--	--	--	--	--	--	--	--	--	--	--	--	--	--	--	--	--	--	--	--	--	--	--	--	--	--	--	--	--	--	--	--	--	--	--	--	--	--	--	--	--	--	--	--	--	--	--	--	--	--	--	--	--	--	--	--	--	--	--	--	--	--	--	--	--	--	--	--	--	--	--	--	--	--	--	--	--	--	--	--	--	--	--	--	--	--	--	--	--	--	--	--	--	--	--	--	--	--	--	--	--	--	--	--	--	--	--	--	--	--	--	--	--	--	--	--	--	--	--	--	--	--	--	--	--	--	--	--	--	--	--	--	--	--	--	--	--	--	--	--	--	--	--	--	--	--	--	--	--	--	--	--	--	--	--	--	--	--	--	--	--	--	--	--	--	--	--	--	--	--	--	--	--	--	--	--	--	--	--	--	--	--	--	--	--	--	--	--	--	--	--	--	--	--	--	--	--	--	--	--	--	--	--	--	--	--	--	--	--	--	--	--	--	--	--	--	--	--	--	--	--	--	--	--	--	--	--	--	--	--	--	--	--	--	--	--	--	--	--	--	--	--	--	--	--	--	--	--	--	--	--	--	--	--	--	--	--	--	--	--	--	--	--	--	--	--	--	--	--	--	--	--	--	--	--	--	--	--	--	--	--	--	--	--	--	--	--	--	--	--	--	--	--	--	--	--	--	--	--	--	--	--	--	--	--	--	--	--	--	--	--	--	--	--	--	--	--	--	--	--	--	--	--	--	--	--	--	--	--	--	--	--	--	--	--	--	--	--	--	--	--	--	--	--	--	--	--	--	--	--	--	--	--	--	--	--	--	--	--	--	--	--	--	--	--	--	--	--	--	--	--	--	--	--	--	--	--	--	--	--	--	--	--	--	--	--	--	--	--	--	--	--	--	--	--	--	--	--	--	--	--	--	--	--	--	--	--	--	--	--	--	--	--	--	--	--	--	--	--	--	--	--	--	--	--	--	--	--	--	--	--	--	--	--	--	--	--	--	--	--	--	--	--	--	--	--	--	--	--	--	--	--	--	--	--	--	--	--	--	--	--	--	--	--	--	--	--	--	--	--	--	--	--	--	--	--	--	--	--	--	--	--	--	--	--	--	--	--	--	--	--	--	--	--	--	--	--	--	--	--	--	--	--	--	--	--	--	--	--	--	--	--	--	--	--	--	--	--	--	--	--	--	--	--	--	--	--	--	--	--	--	--	--	--	--	--	--	--	--	--	--	--	--	--	--	--	--	--	--	--	--	--	--	--	--	--	--	--	--	--	--	--	--	--	--	--	--	--	--	--	--	--	--	--	--	--	--	--	--	--	--	--	--	--	--	--	--	--	--	--	--	--	--	--	--	--	--	--	--	--	--	--	--	--	--	--	--	--	--	--	--	--	--	--	--	--	--	--	--	--	--	--	--	--	--	--	--	--	--	--	--	--	--	--	--	--	--	--	--	--	--	--	--	--	--	--	--	--	--	--	--	--	--	--	--	--	--	--	--	--	--	--	--	--	--	--	--	--	--	--	--	--	--	--	--	--	--	--	--	--	--	--	--	--	--	--	--	--	--	--	--	--	--	--	--	--	--	--	--	--	--	--	--	--	--	--	--	--	--	--	--	--	--	--	--	--	--	--	--	--	--	--	--	--	--	--	--	--	--	--	--	--	--	--	--	--	--	--	--	--	--	--	--	--	--	--	--	--	--



A **LAUREL ROAD BUFFER**
PER BINDING MASTER PLAN, 15' WIDE, 1 TREE / 50 L.F., WITH
2' CONTINUOUS HEDGE REQUIRED.
1,630 L.F. = 33 TREES REQUIRED.
143 TREES PROVIDED, WITH 2' CONTINUOUS HEDGE

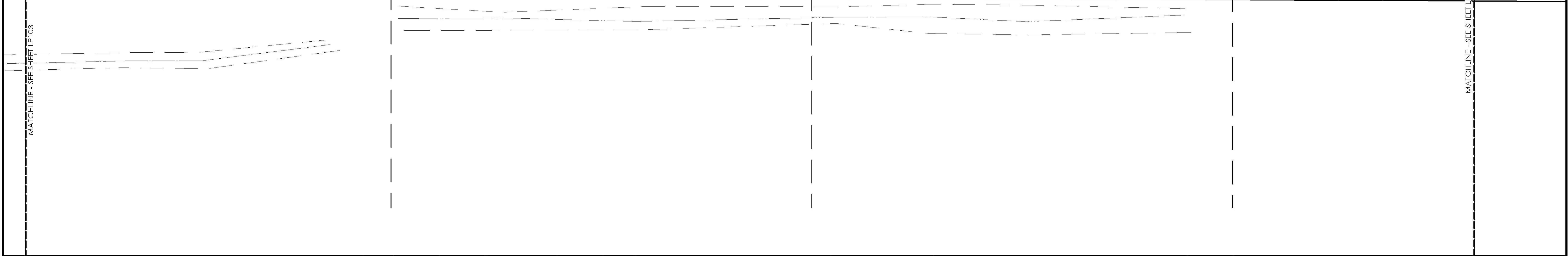
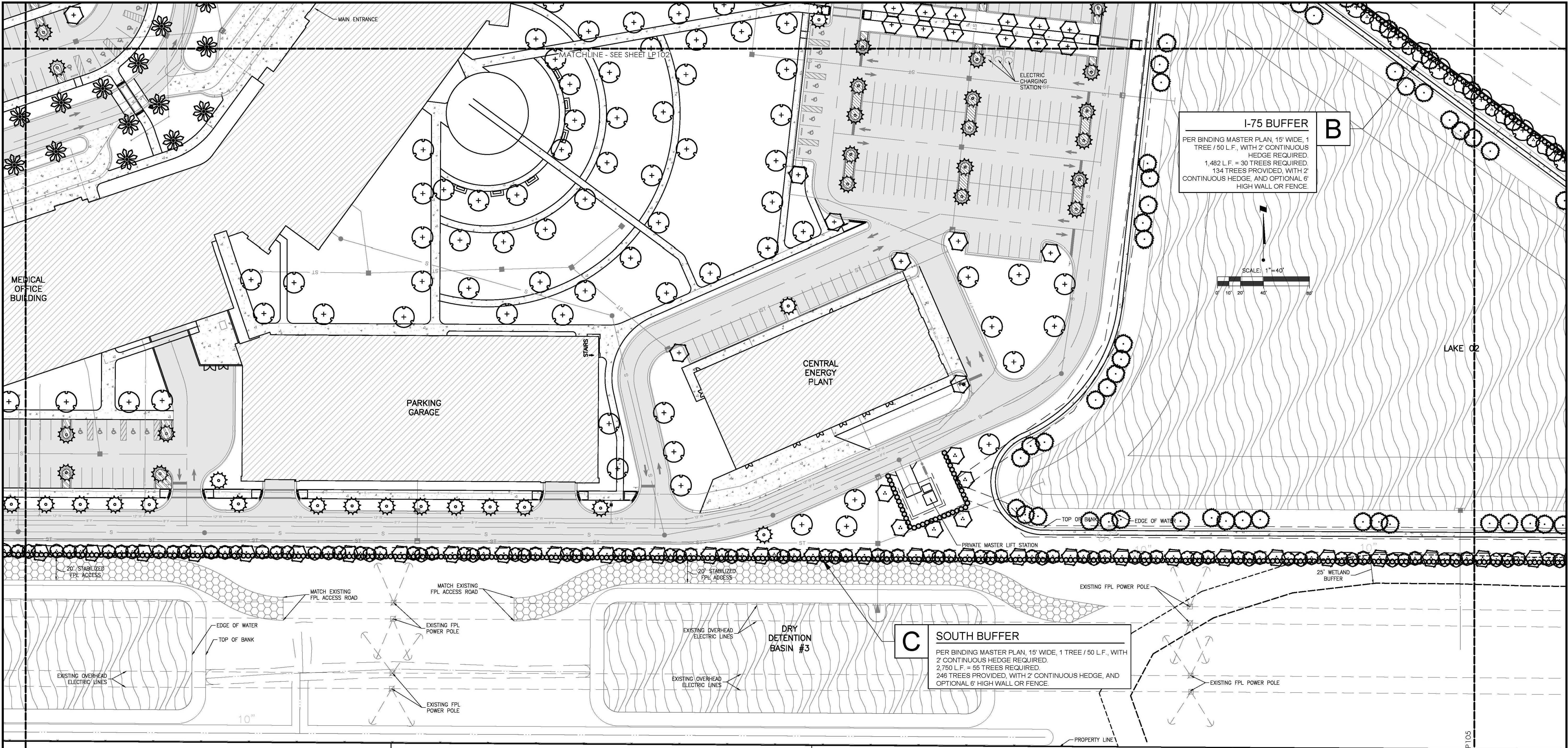
B **I-75 BUFFER**
PER BINDING MASTER PLAN, 15' WIDE, 1 TREE / 50 L.F., WITH
2' CONTINUOUS HEDGE REQUIRED.
1,482 L.F. = 30 TREES REQUIRED.
134 TREES PROVIDED, WITH 2' CONTINUOUS HEDGE, AND
OPTIONAL 6' HIGH WALL OR FENCE.

				ACTIVITY		INITIALS/EMP. NO.	DATE	<div>Stantec 6900 Professional Parkway East, Sarasota, FL 34240-8414 Phone 941-907-6900 • Fax 941-907-6910 Certificate of Authorization #27013 • www.stantec.com</div>	The Contractor shall verify and be responsible for all dimensions. DO NOT scale the drawing - any errors or omissions shall be reported to Stantec without delay. The Copyrights to all designs and drawings are the property of Stantec. Reproduction or use for any purpose other than that authorized by Stantec is forbidden.		CLIENT:		SARASOTA COUNTY PUBLIC HOSPITAL BOARD		DATE:	11/2018		TITLE:	LANDSCAPE PLAN		NOT FOR CONSTRUCTION	
				DESIGNED BY:		TK	11/2018				PROJECT:		SARASOTA MEMORIAL HOSPITAL – VENICE		HORIZONTAL SCALE:			THOMAS J. KOTKIEWICZ, L.A. FLORIDA LICENSE NO. 1A0001687		INDEX NUMBER:		
				DRAWN BY:		TK	11/2018								VERTICAL SCALE:			215614375-002-100LP		SHEET NUMBER:		
				CHECKED BY:											SEC:	TWP: 19E	CROSS REFERENCE FILE NO.:	PROJECT NUMBER:	215614375		LP102 OF	
A		RESPOND TO CITY COMMENTS		02/06/19	TK	TK	CONTRACT ADMIN. BY:						35	38S	19E							
REV NO.		REVISION		DATE		DRAWN BY / EMP. NO.		CHECKED BY / EMP. NO.		WM APPROVED BY:												

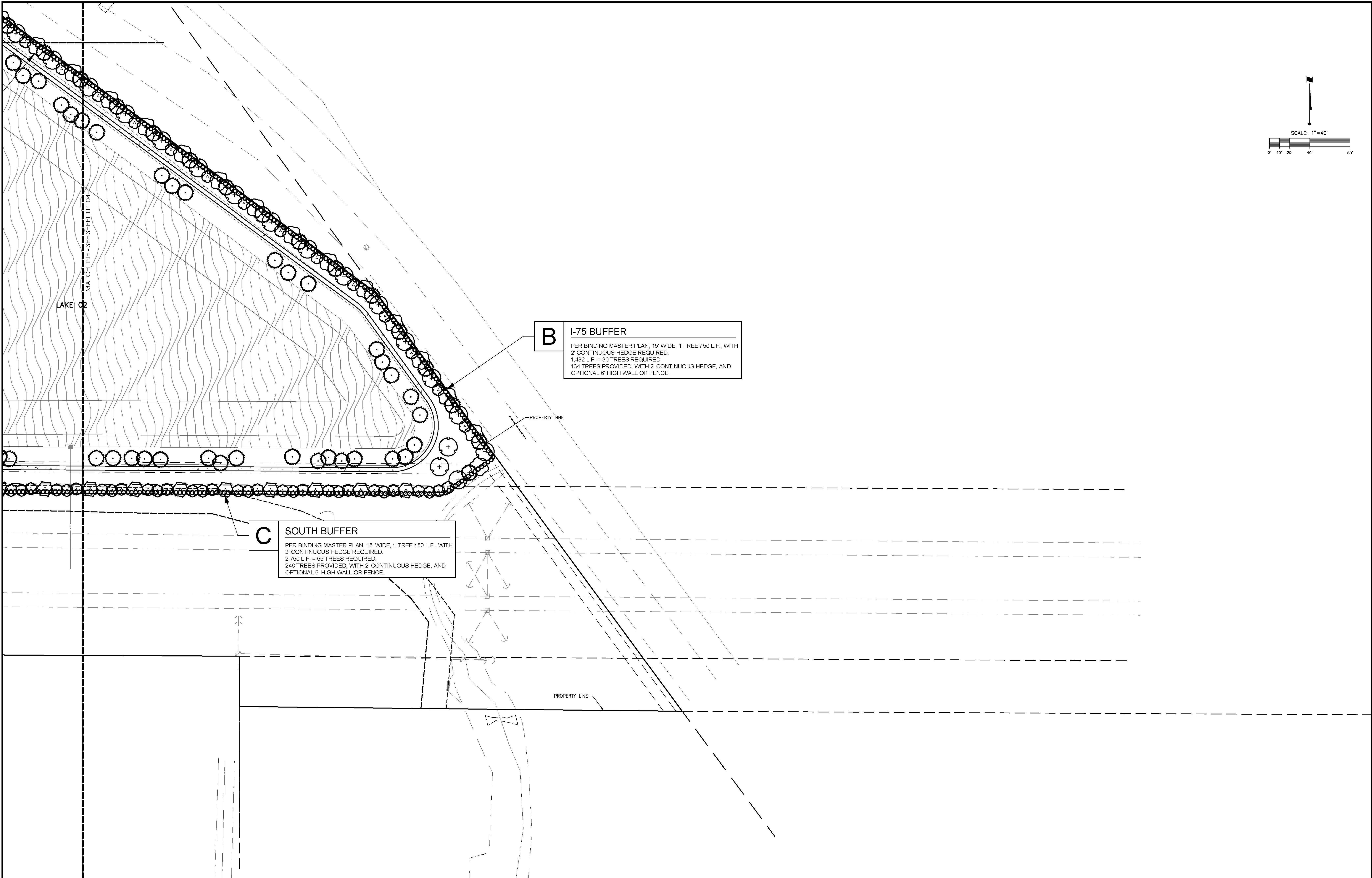
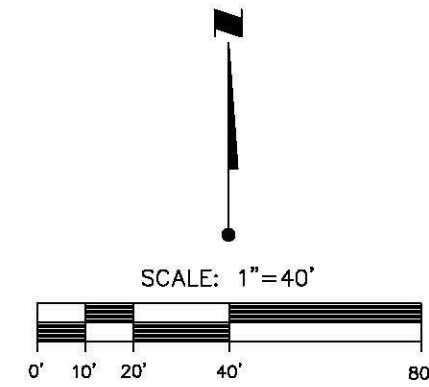


				ACTIVITY	INITIALS/EMP. NO.	DATE	 <div>Stantec</div> <div>6900 Professional Parkway East, Sarasota, FL 34240-8414 Phone 941-907-6900 • Fax 941-907-6910 Certificate of Authorization #27013 • www.stantec.com</div>	CLIENT: SARASOTA COUNTY PUBLIC HOSPITAL BOARD		DATE: 11/2018	TITLE: LANDSCAPE PLAN	NOT FOR CONSTRUCTION		
				DESIGNED BY: TK	TK	11/2018		PROJECT: SARASOTA MEMORIAL HOSPITAL – VENICE		HORIZONTAL SCALE:		THOMAS J. KOTKIEWICZ, L.A.D. FLORIDA LICENSE NO. LA0001687		
				DRAWN BY: TK	TK	11/2018				VERTICAL SCALE:		INDEX NUMBER: 215614375-002-100LP		
RESPOND TO UTILITY COMMENTS				03/08/19	TK	TK	CHECKED BY:			SEC: TWP: RGE:	GROSS REFERENCE FILE NO.:	PROJECT NUMBER: 215614375	SHEET NUMBER: LP103	OF:
RESPOND TO CITY COMMENTS				02/06/19	TK	TK	CONTRACT ADMIN. BY:			35 385 19E				
ΔREV. NO.	REVISION			DATE	DRAWN BY / EMP. NO.	CHECKED BY / EMP. NO.	WM APPROVED BY:							

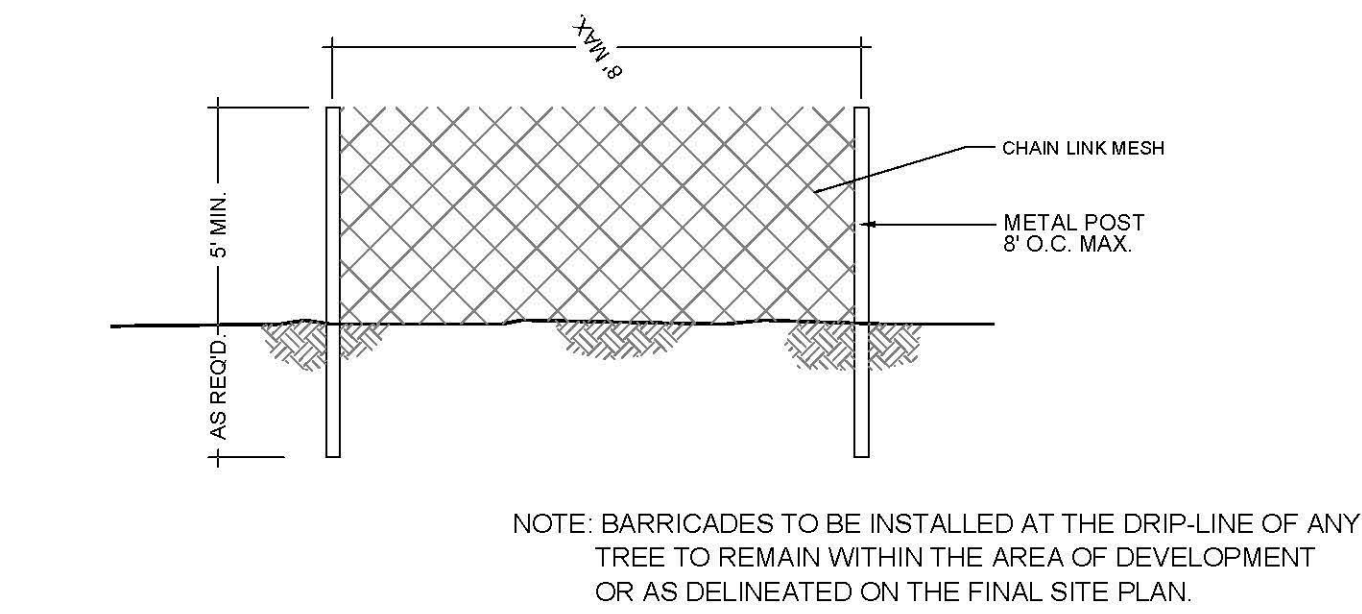
Saved: 3/7/2019 3:37:18 PM TKOTKIEWICZ | Plotted: 3/7/2019 3:38:45 PM TKOTKIEWICZ | V:\2156\active\215614375\landscape\design\drawing\sheet\215614375-002-100LP.dwg|LP103



--	--	--	--	--	--	--	--	--	--	--	--	--	--	--	--	--	--	--	--	--	--	--	--	--	--	--	--	--	--	--	--	--	--	--	--	--	--	--	--	--	--	--	--	--	--	--	--	--	--	--	--	--	--	--	--	--	--	--	--	--	--	--	--	--	--	--	--	--	--	--	--	--	--	--	--	--	--	--	--	--	--	--	--	--	--	--	--	--	--	--	--	--	--	--	--	--	--	--	--	--	--	--	--	--	--	--	--	--	--	--	--	--	--	--	--	--	--	--	--	--	--	--	--	--	--	--	--	--	--	--	--	--	--	--	--	--	--	--	--	--	--	--	--	--	--	--	--	--	--	--	--	--	--	--	--	--	--	--	--	--	--	--	--	--	--	--	--	--	--	--	--	--	--	--	--	--	--	--	--	--	--	--	--	--	--	--	--	--	--	--	--	--	--	--	--	--	--	--	--	--	--	--	--	--	--	--	--	--	--	--	--	--	--	--	--	--	--	--	--	--	--	--	--	--	--	--	--	--	--	--	--	--	--	--	--	--	--	--	--	--	--	--	--	--	--	--	--	--	--	--	--	--	--	--	--	--	--	--	--	--	--	--	--	--	--	--	--	--	--	--	--	--	--	--	--	--	--	--	--	--	--	--	--	--	--	--	--	--	--	--	--	--	--	--	--	--	--	--	--	--	--	--	--	--	--	--	--	--	--	--	--	--	--	--	--	--	--	--	--	--	--	--	--	--	--	--	--	--	--	--	--	--	--	--	--	--	--	--	--	--	--	--	--	--	--	--	--	--	--	--	--	--	--	--	--	--	--	--	--	--	--	--	--	--	--	--	--	--	--	--	--	--	--	--	--	--	--	--	--	--	--	--	--	--	--	--	--	--	--	--	--	--	--	--	--	--	--	--	--	--	--	--	--	--	--	--	--	--	--	--	--	--	--	--	--	--	--	--	--	--	--	--	--	--	--	--	--	--	--	--	--	--	--	--	--	--	--	--	--	--	--	--	--	--	--	--	--	--	--	--	--	--	--	--	--	--	--	--	--	--	--	--	--	--	--	--	--	--	--	--	--	--	--	--	--	--	--	--	--	--	--	--	--	--	--	--	--	--	--	--	--	--	--	--	--	--	--	--	--	--	--	--	--	--	--	--	--	--	--	--	--	--	--	--	--	--	--	--	--	--	--	--	--	--	--	--	--	--	--	--	--	--	--	--	--	--	--	--	--	--	--	--	--	--	--	--	--	--	--	--	--	--	--	--	--	--	--	--	--	--	--	--	--	--	--	--	--	--	--	--	--	--	--	--	--	--	--	--	--	--	--	--	--	--	--	--	--	--	--	--	--	--	--	--	--	--	--	--	--	--	--	--	--	--	--	--	--	--	--	--	--	--	--	--	--	--	--	--	--	--	--	--	--	--	--	--	--	--	--	--	--	--	--	--	--	--	--	--	--	--	--	--	--	--	--	--	--	--	--	--	--	--	--	--	--	--	--	--	--	--	--	--	--	--	--	--	--	--	--	--	--	--	--	--	--	--	--	--	--	--	--	--	--	--	--	--	--	--	--	--	--	--	--	--	--	--	--	--	--	--	--	--	--	--	--	--	--	--	--	--	--	--	--	--	--	--	--	--	--	--	--	--	--	--	--	--	--	--	--	--	--	--	--	--	--	--	--	--	--	--	--	--	--	--	--	--	--	--	--	--	--	--	--	--	--	--	--	--	--	--	--	--	--	--	--	--	--	--	--	--	--	--	--	--	--	--	--	--	--	--	--	--	--	--	--	--	--	--	--	--	--	--	--	--	--	--	--	--	--	--	--	--	--	--	--	--	--	--	--	--	--	--	--	--	--	--	--	--	--	--	--	--	--	--	--	--	--	--	--	--	--	--	--	--	--	--	--	--	--	--	--	--	--	--	--	--	--	--	--	--	--	--	--	--	--	--	--	--	--	--	--	--	--	--	--	--	--	--	--	--	--	--	--	--	--	--	--	--	--	--	--	--	--	--	--	--	--	--	--	--	--	--	--	--	--	--	--	--	--	--	--	--	--	--	--	--	--	--	--	--	--	--	--	--	--	--	--	--	--	--	--	--	--	--	--	--	--	--	--	--	--	--	--	--	--	--	--	--	--	--	--	--	--	--	--	--	--	--	--	--	--	--	--	--	--	--	--	--	--	--	--	--	--	--	--	--	--	--	--	--	--	--	--	--	--	--	--	--	--	--	--	--	--	--	--	--	--	--	--	--	--	--	--	--	--	--	--	--	--	--	--	--	--	--	--	--	--	--	--	--	--	--	--	--	--	--	--	--	--	--	--	--	--	--	--	--	--	--	--	--	--	--	--	--	--	--	--	--	--	--	--	--	--	--	--	--	--	--	--	--	--	--	--	--	--	--	--	--	--	--	--	--	--	--	--	--	--	--	--	--	--	--	--	--	--	--	--	--	--	--	--	--	--	--	--	--	--	--	--	--	--	--	--	--	--	--	--	--	--	--	--	--	--	--	--	--	--	--	--	--	--	--	--	--	--	--	--	--	--	--	--	--	--	--	--	--	--	--	--	--	--	--	--	--	--	--	--	--	--	--	--	--	--	--	--	--	--	--	--	--	--	--	--	--	--	--	--	--	--	--	--	--	--	--	--	--	--	--	--	--	--	--	--	--	--	--	--	--	--	--	--	--	--	--	--	--	--	--	--	--	--	--	--	--	--	--	--	--	--	--	--	--	--	--	--	--	--	--	--	--	--	--	--	--	--	--	--	--	--	--	--	--	--	--	--	--	--	--	--	--	--	--	--	--	--	--	--	--	--	--	--	--	--	--	--	--	--	--	--	--	--	--	--	--	--	--	--	--	--	--	--	--	--	--	--	--	--	--	--	--	--	--	--	--	--	--	--	--	--	--	--	--	--	--	--	--	--	--	--	--	--	--	--	--	--	--	--	--	--	--	--	--	--	--	--	--	--	--	--	--	--	--	--	--	--	--	--	--	--	--	--	--	--	--	--	--	--	--	--	--	--	--	--	--	--	--	--	--	--	--	--	--	--	--	--	--	--	--	--	--	--	--	--	--	--	--	--	--	--	--	--	--	--	--	--



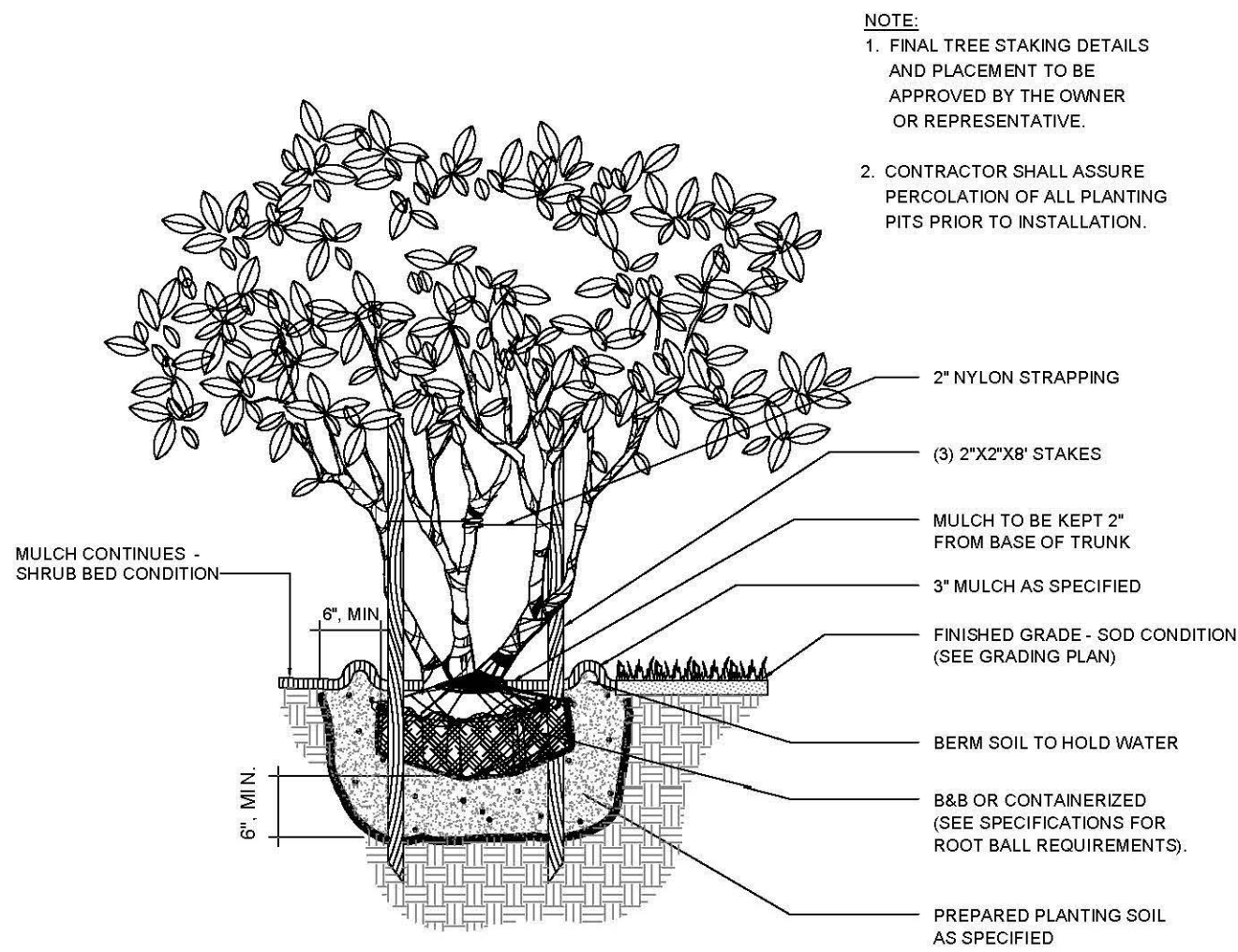
--	--	--	--	--	--	--	--	--	--	--	--	--	--	--	--	--	--	--	--	--	--	--	--	--	--	--	--	--	--	--	--	--	--	--	--	--	--	--	--	--	--	--	--	--	--	--	--	--	--	--	--	--	--	--	--	--	--	--	--	--	--	--	--	--	--	--	--	--	--	--	--	--	--	--	--	--	--	--	--	--	--	--	--	--	--	--	--	--	--	--	--	--	--	--	--	--	--	--	--	--	--	--	--	--	--	--	--	--	--	--	--	--	--	--	--	--	--	--	--	--	--	--	--	--	--	--	--	--	--	--	--	--	--	--	--	--	--	--	--	--	--	--	--	--	--	--	--	--	--	--	--	--	--	--	--	--	--	--	--	--	--	--	--	--	--	--	--	--	--	--	--	--	--	--	--	--	--	--	--	--	--	--	--	--	--	--	--	--	--	--	--	--	--	--	--	--	--	--	--	--	--	--	--	--	--	--	--	--	--	--	--	--	--	--	--	--	--	--	--	--	--	--	--	--	--	--	--	--	--	--	--	--	--	--	--	--	--	--	--	--	--	--	--	--	--	--	--	--	--	--	--	--	--	--	--	--	--	--	--	--	--	--	--	--	--	--	--	--	--	--	--	--	--	--	--	--	--	--	--	--	--	--	--	--	--	--	--	--	--	--	--	--	--	--	--	--	--	--	--	--	--	--	--	--	--	--	--	--	--	--	--	--	--	--	--	--	--	--	--	--	--	--	--	--	--	--	--	--	--	--	--	--	--	--	--	--	--	--	--	--	--	--	--	--	--	--	--	--	--	--	--	--	--	--	--	--	--	--	--	--	--	--	--	--	--	--	--	--	--	--	--	--	--	--	--	--	--	--	--	--	--	--	--	--	--	--	--	--	--	--	--	--	--	--	--	--	--	--	--	--	--	--	--	--	--	--	--	--	--	--	--	--	--	--	--	--	--	--	--	--	--	--	--	--	--	--	--	--	--	--	--	--	--	--	--	--	--	--	--	--	--	--	--	--	--	--	--	--	--	--	--	--	--	--	--	--	--	--	--	--	--	--	--	--	--	--	--	--	--	--	--	--	--	--	--	--	--	--	--	--	--	--	--	--	--	--	--	--	--	--	--	--	--	--	--	--	--	--	--	--	--	--	--	--	--	--	--	--	--	--	--	--	--	--	--	--	--	--	--	--	--	--	--	--	--	--	--	--	--	--	--	--	--	--	--	--	--	--	--	--	--	--	--	--	--	--	--	--	--	--	--	--	--	--	--	--	--	--	--	--	--	--	--	--	--	--	--	--	--	--	--	--	--	--	--	--	--	--	--	--	--	--	--	--	--	--	--	--	--	--	--	--	--	--	--	--	--	--	--	--	--	--	--	--	--	--	--	--	--	--	--	--	--	--	--	--	--	--	--	--	--	--	--	--	--	--	--	--	--	--	--	--	--	--	--	--	--	--	--	--	--	--	--	--	--	--	--	--	--	--	--	--	--	--	--	--	--	--	--	--	--	--	--	--	--	--	--	--	--	--	--	--	--	--	--	--	--	--	--	--	--	--	--	--	--	--	--	--	--	--	--	--	--	--	--	--	--	--	--	--	--	--	--	--	--	--	--	--	--	--	--	--	--	--	--	--	--	--	--	--	--	--	--	--	--	--	--	--	--	--	--	--	--	--	--	--	--	--	--	--	--	--	--	--	--	--	--	--	--	--	--	--	--	--	--	--	--	--	--	--	--	--	--	--	--	--	--	--	--	--	--	--	--	--	--	--	--	--	--	--	--	--	--	--	--	--	--	--	--	--	--	--	--	--	--	--	--	--	--	--	--	--	--	--	--	--	--	--	--	--	--	--	--	--	--	--	--	--	--	--	--	--	--	--	--	--	--	--	--	--	--	--	--	--	--	--	--	--	--	--	--	--	--	--	--	--	--	--	--	--	--	--	--	--	--	--	--	--	--	--	--	--	--	--	--	--	--	--	--	--	--	--	--	--	--	--	--	--	--	--	--	--	--	--	--	--	--	--	--	--	--	--	--	--	--	--	--	--	--	--	--	--	--	--	--	--	--	--	--	--	--	--	--	--	--	--	--	--	--	--	--	--	--	--	--	--	--	--	--	--	--	--	--	--	--	--	--	--	--	--	--	--	--	--	--	--	--	--	--	--	--	--	--	--	--	--	--	--	--	--	--	--	--	--	--	--	--	--	--	--	--	--	--	--	--	--	--	--	--	--	--	--	--	--	--	--	--	--	--	--	--	--	--	--	--	--	--	--	--	--	--	--	--	--	--	--	--	--	--	--	--	--	--	--	--	--	--	--	--	--	--	--	--	--	--	--	--	--	--	--	--	--	--	--	--	--	--	--	--	--	--	--	--	--	--	--	--	--	--	--	--	--	--	--	--	--	--	--	--	--	--	--	--	--	--	--	--	--	--	--	--	--	--	--	--	--	--	--	--	--	--	--	--	--	--	--	--	--	--	--	--	--	--	--	--	--	--	--	--	--	--	--	--	--	--	--	--	--	--	--	--	--	--	--	--	--	--	--	--	--	--	--	--	--	--	--	--	--	--	--	--	--	--	--	--	--	--	--	--	--	--	--	--	--	--	--	--	--	--	--	--	--	--	--	--	--	--	--	--	--	--	--	--	--	--	--	--	--	--	--	--	--	--	--	--	--	--	--	--	--	--	--	--	--	--	--	--	--	--	--	--	--	--	--	--	--	--	--	--	--	--	--	--	--	--	--	--	--	--	--	--	--	--	--	--	--	--	--	--	--	--	--	--	--	--	--	--	--	--	--	--	--	--	--	--	--	--	--	--	--	--	--	--	--	--	--	--	--	--	--	--	--	--	--	--	--	--	--	--	--	--	--	--	--	--	--	--	--	--	--	--	--	--	--	--	--	--	--	--	--	--	--	--	--	--	--	--	--	--	--	--	--	--	--	--	--	--	--	--	--	--	--	--	--	--	--	--	--	--	--	--	--	--	--	--	--	--	--	--	--	--	--	--	--	--	--	--	--	--	--	--	--	--	--	--	--	--	--	--	--	--	--	--	--	--	--	--	--	--	--	--	--	--	--	--	--	--	--	--	--	--	--	--	--	--	--



Typical Tree Barricade Detail

1

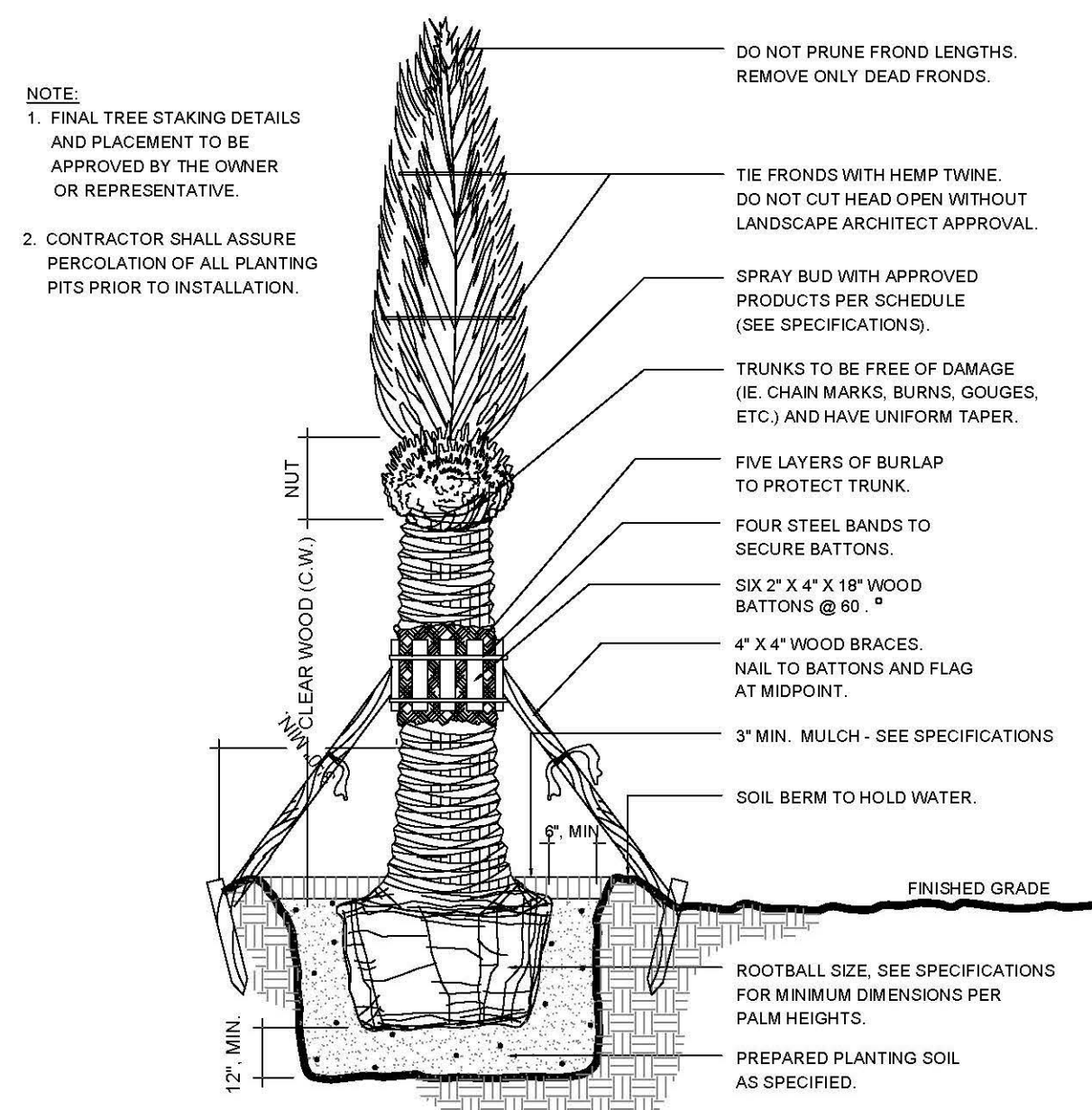
SCALE: nts



Multi-Trunk Tree

4

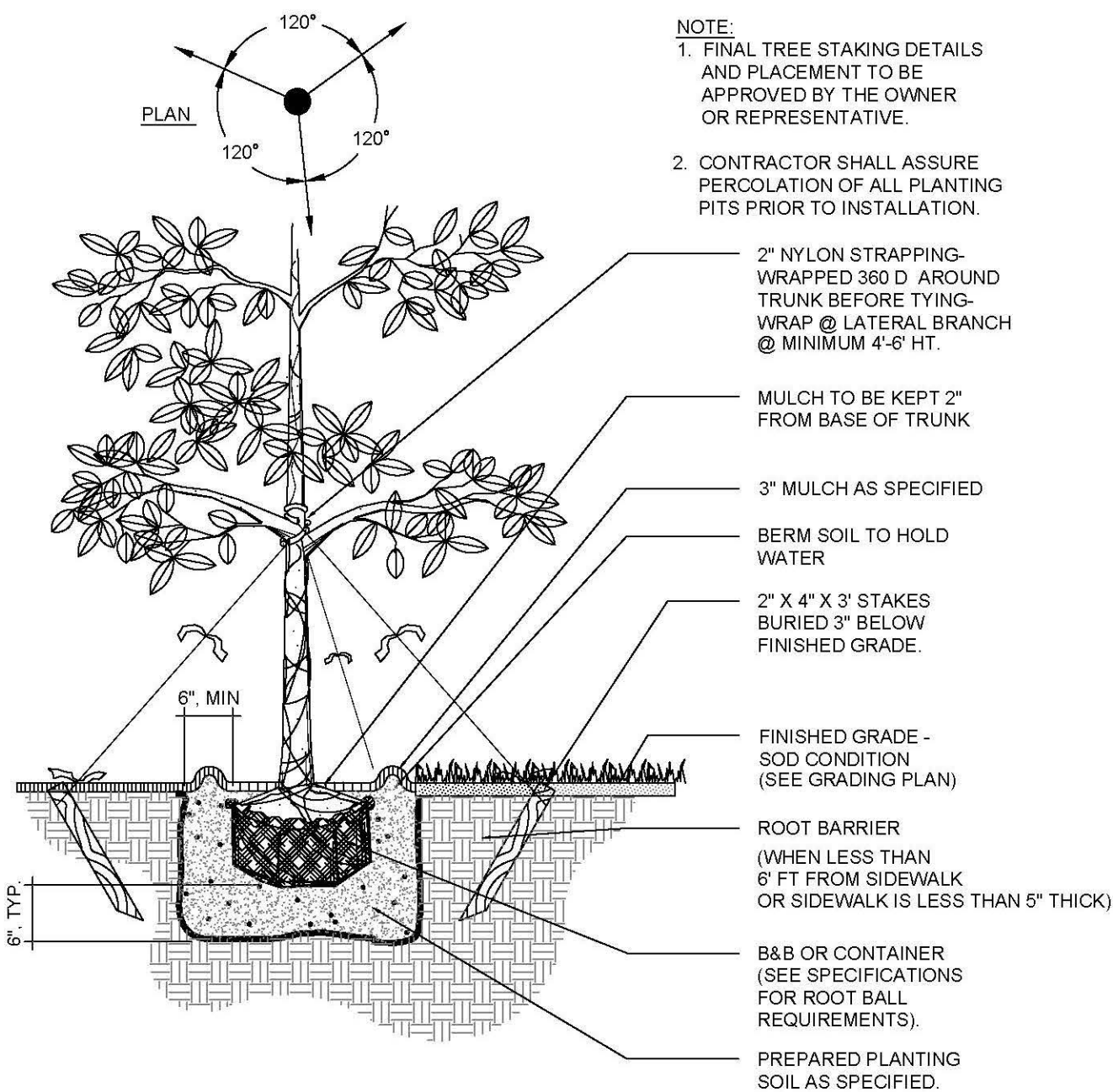
SCALE: nts



Date Palm

7

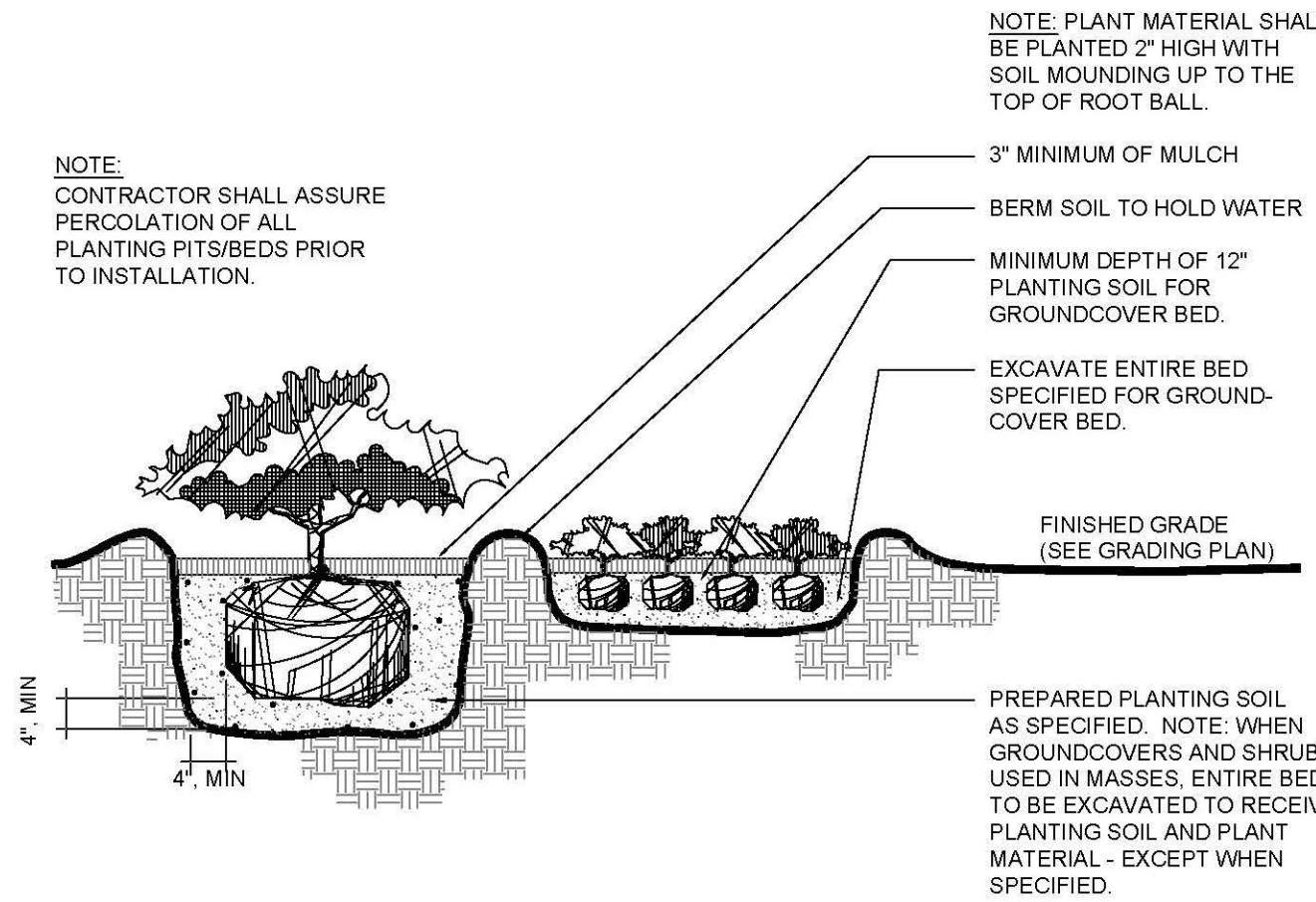
SCALE: N.T.S.



Canopy Tree Planting Detail

2

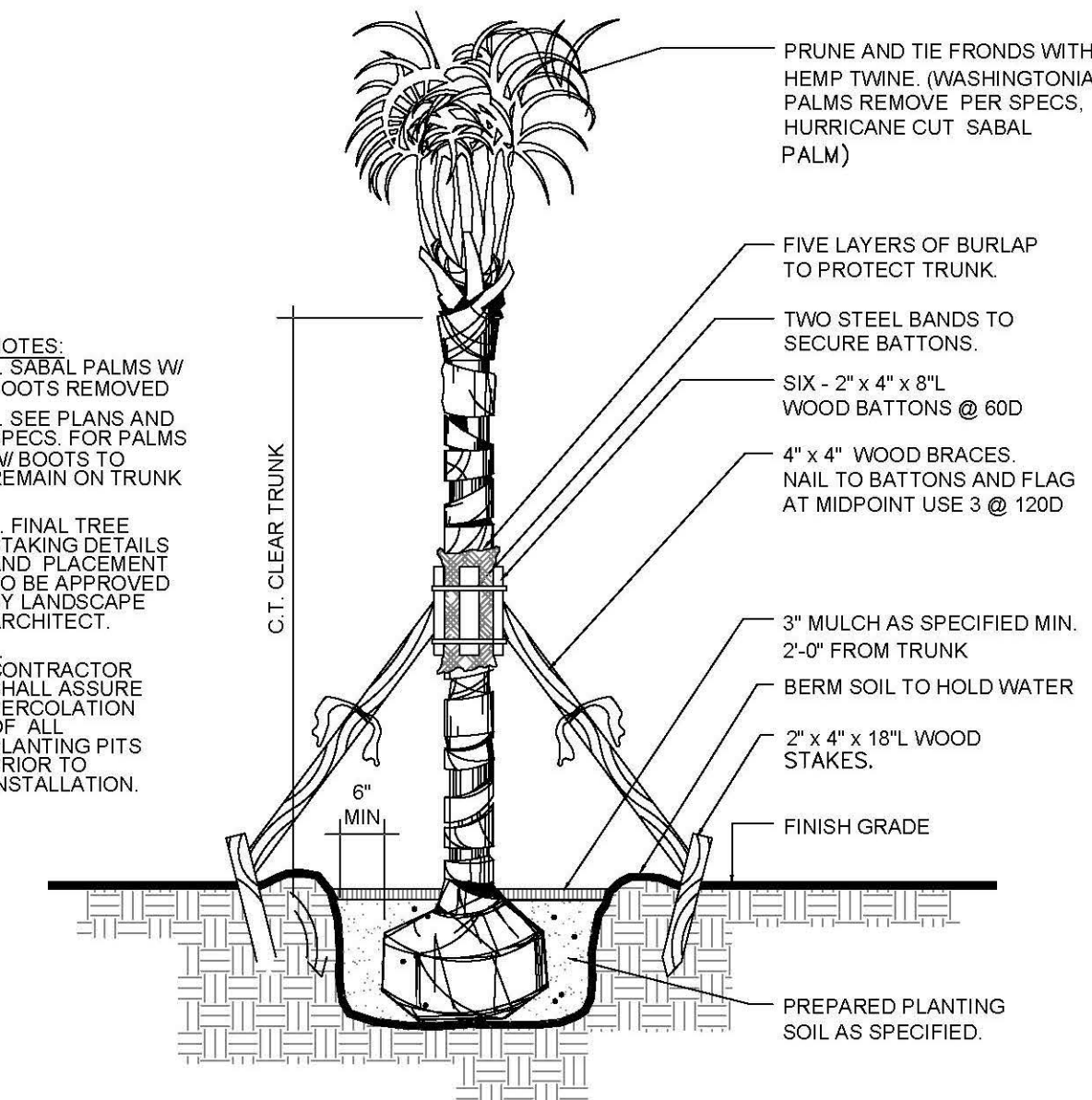
SCALE: nts



Shrub and Groundcover Planting Detail

5

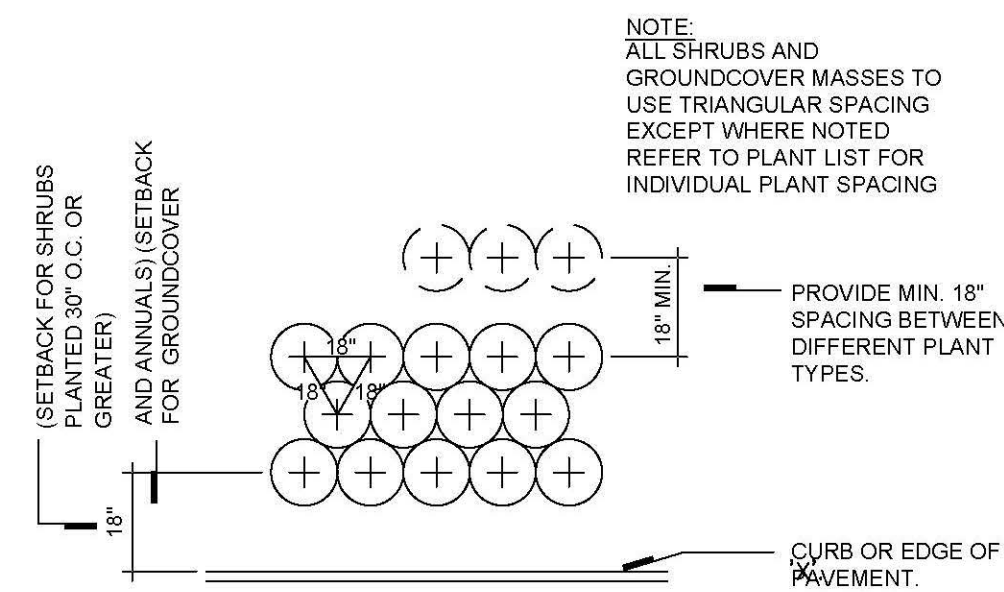
SCALE: nts



Cabbage Palm

8

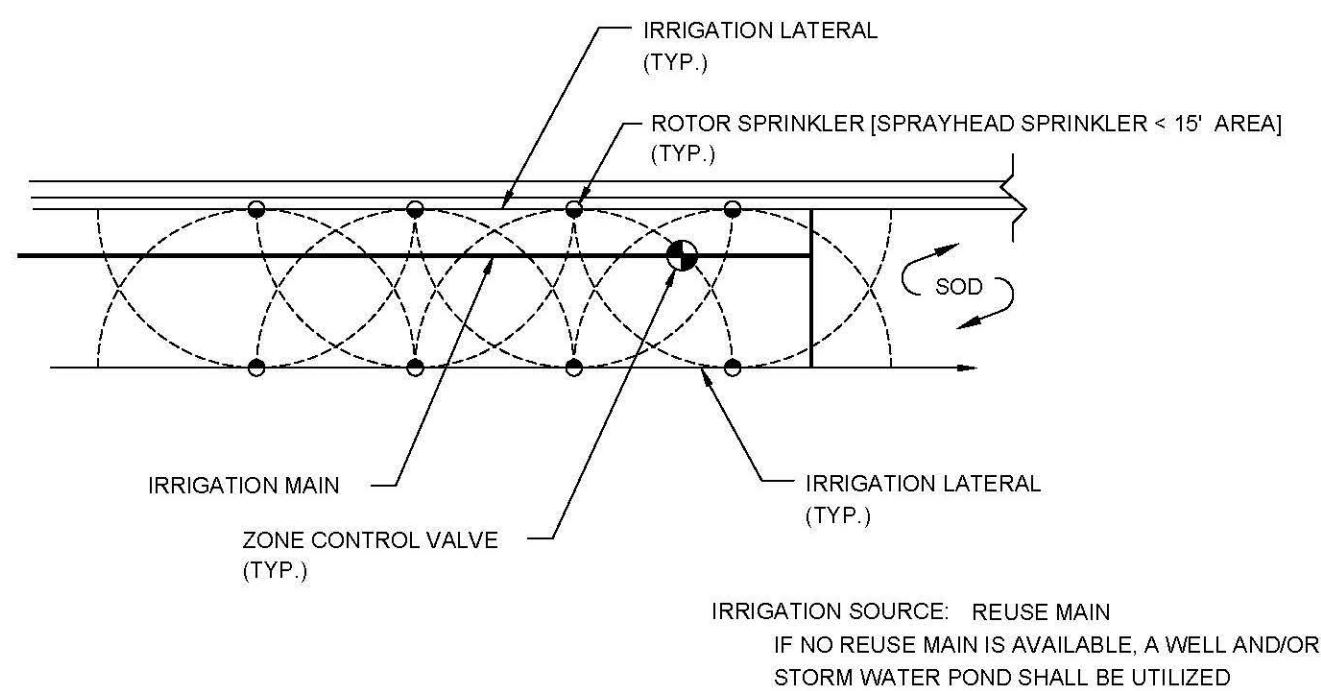
SCALE: N.T.S.



Groundcover Spacing Plan Detail

3

SCALE: NTS



Typical Irrigation Plan Detail

6

SCALE: nts

						ACTIVITY	INITIALS/EMP. NO.	DATE
						DESIGNED BY:	TK	11/2018
						DRAWN BY:	TK	11/2018
						CHECKED BY:		
						CONTRACT ADMIN. BY:		
						WM APPROVED BY:		
Δ/REV. NO.	REVISION	DATE	DRAWN BY / EMP. NO.	CHECKED BY / EMP. NO.	WM APPROVED BY:			
A	RESPOND TO CITY COMMENTS	02/06/19	TK	TK				

Stantec
6800 Professional Parkway East, Sarasota, FL 34240-8414
Phone 941-927-5900 • Fax 941-927-0910
Certificate of Authorization #2013 • www.stantec.com

The Contractor shall verify and be responsible for all dimensions. DO NOT scale the drawing - any errors or omissions shall be reported to Stantec without delay. The Copyright to all designs and drawings are the property of Stantec. Reproduction or use for any purpose other than that authorized by Stantec is forbidden.

CLIENT:	SARASOTA COUNTY PUBLIC HOSPITAL BOARD	DATE:	11/2018	TITLE:	LANDSCAPE DETAILS	NOT FOR CONSTRUCTION
PROJECT:	SARASOTA MEMORIAL HOSPITAL - VENICE	HORIZONTAL SCALE:				THOMAS J. KOTKIEWICZ, L.A. FLORIDA LICENSE NO. LA0001687
		VERTICAL SCALE:				INDEX NUMBER: 215614375-002-100LP
		SHEET NO.:	35	CROSS REFERENCE FILE NO.:		SHEET NUMBER: LP501
		PROJECT NUMBER:	215614375			OF

Saved: 3/7/2019 5:37:18 PM TKOTKIEWICZ | Plotted: 3/7/2019 3:38:59 PM TKOTKIEWICZ | V:\21561\active\215614375\landscape\design\drawing\sheet\215614375-002-100LP.dwg\LP501

LANDSCAPE NOTES

1. CONTRACTOR SHALL FIELD VERIFY ALL INFORMATION PRIOR TO INITIATING PLANTING INSTALLATION.

2. CONTRACTOR SHALL NOTIFY ALL PERTINENT UTILITY COMPANIES 48 HOURS MINIMUM PRIOR TO DIGGING FOR VERIFICATION OF ALL UNDERGROUND UTILITIES. PLANS ARE PREPARED ACCORDING TO THE BEST INFORMATION AVAILABLE AT THE TIME OF PREPARING THESE DOCUMENTS.

3. THE CONTRACTOR SHALL BECOME COMPLETELY FAMILIAR WITH EXISTING SITE CONDITIONS PRIOR TO BEGINNING INSTALLATION. ALL EXISTING SITE IMPROVEMENTS, PAVING, LANDSCAPE, LIGHTING, AND OTHER SITE ELEMENTS TO REMAIN SHALL BE PROTECTED FROM DAMAGE UNLESS OTHERWISE NOTED.

4. UNLESS OTHERWISE NOTED, THE LIMITS OF CONSTRUCTION ARE THE CLEARING LIMITS NOTED ON THE PLANS.

5. THE CONTRACTOR SHALL REPORT ANY DISCREPANCIES BETWEEN THE CONSTRUCTION DRAWINGS AND ACTUAL FIELD CONDITIONS TO THE OWNER'S REPRESENTATIVE IMMEDIATELY.

6. THE CONTRACTOR SHALL COORDINATE ALL WORK WITH RELATED CONTRACTORS AND WITH THE GENERAL CONSTRUCTION OF THE PROJECT IN ORDER TO NOT IMPEDE THE PROGRESS OF WORK OF OTHERS OR THE CONTRACTOR'S OWN WORK.

7. CONTRACTOR SHALL BE RESPONSIBLE TO REMOVE ALL EXISTING GROUND COVERS FOR ALL NEW PLANTING BEDS BY APPROVED MEANS PRIOR TO PLANTING INSTALLATION. CONTRACTOR SHALL BE RESPONSIBLE TO REPLACE ALL PORTIONS OF EXISTING PLANTING OR LAWN AREAS INDICATED TO REMAIN WHILE COMPLETING NEW PLANTING INSTALLATION WORK WITH SAME KIND OF PLANTS OR GRASS TO THE SATISFACTION OF THE OWNER AT NO ADDITIONAL COST.

8. THE CONTRACTOR SHALL BEAR ALL COST ASSOCIATED WITH SOIL TESTING AND SOIL AMENDMENTS AS REQUIRED AS A RESULT OF THE SOIL TESTING LABORATORY'S RECOMMENDATIONS. PRIOR TO INITIATING INSTALLATION THE CONTRACTOR SHALL PROVIDE SOIL TEST FOR AT LEAST TWO ON-SITE LOCATIONS.

9. ALL PLANT CONTAINER SIZES NOTED ON THE PLANT LIST/MATERIAL SCHEDULE ARE MINIMUM. INCREASE SIZE OF CONTAINERS IF NECESSARY TO CONFORM TO THE PLANT SIZE AND SPECIFICATIONS.

10. EROSION CONTROL FABRIC SHALL BE INSTALLED IN ALL SHRUB AND GROUND COVER PLANTING AREAS AS PER THE DETAILS AND/OR SPECIFICATIONS FOR ALL SLOPES THAT ARE GREATER THAN 3:1 (SLOPES 1 VERTICAL FOR EVERY 3 HORIZONTAL). SEE CIVIL ENGINEERING PLANS FOR LOCATIONS WHERE SLOPES ARE GREATER THAN 3:1.

11. SHRUB AND GROUND COVER PLANTINGS ARE TYPICALLY SHOWN ON THE PLANS IN MASS PLANTING BEDS. PLANTS SHALL BE SET IN A TRIANGULAR SPACING PATTERN (STAGGERED SPACING). PLANT CENTER TO CENTER DIMENSIONS (O.C.) ARE INDICATED IN THE PLANT LIST.

12. LANDSCAPE CONTRACTOR SHALL FIELD ADJUST THE LOCATION OF PLANT MATERIAL AS NECESSARY TO AVOID DAMAGE TO EXISTING TREES AND UNDERSTORY VEGETATION TO REMAIN, UNDERGROUND AND ABOVE GROUND UTILITIES AND ALL OTHER ABOVE GROUND ELEMENTS. ALL CHANGES REQUIRED SHALL BE COORDINATED WITH THE OWNER'S REPRESENTATIVE, CITY OF VENICE REPRESENTATIVE, AND THE LANDSCAPE ARCHITECT PRIOR TO INITIATING ANY CHANGES.

13. WHEN NECESSARY, PLANTING WITHIN THE DRIPLINE/CANOPY OF EXISTING TREES SHOULD BE DONE IN THE MOST SENSITIVE MANNER POSSIBLE IN ORDER TO AVOID ROOT DAMAGE. ALL NEW PLANTINGS WITHIN THE DRIPLINE/CANOPY SHOULD BE HAND-DUG AND FIELD ADJUSTED TO AVOID ROOTS AS NECESSARY.

14. ANY SUBSTITUTIONS TO PLANT MATERIAL SIZE OR TYPE MUST BE APPROVED BY THE LANDSCAPE ARCHITECT PRIOR TO INSTALLATION. LANDSCAPE CONTRACTOR SHALL MAKE ANY SUBSTITUTIONS OR ALTERATIONS TO THE LANDSCAPE PLANTING PLANS OR PLANT LIST & MATERIALS WITHOUT THE PRIOR APPROVAL OF THE LANDSCAPE ARCHITECT AND OWNER'S REPRESENTATIVE. ANY LANDSCAPE PLANTING INSTALLED THAT DOES NOT CONFORM TO THE PLANS, PLANT LIST AND SPECIFICATIONS SHALL BE REPLACED IMMEDIATELY TO THE SATISFACTION OF THE OWNER'S REPRESENTATIVE, CITY OF VENICE REPRESENTATIVE, AND LANDSCAPE ARCHITECT.

15. CONTRACTOR SHALL BE RESPONSIBLE FOR WATERING AS REQUIRED TO MAINTAIN AND ESTABLISH ALL PLANTING (NEW, EXISTING TO BE RELOCATED, AND EXISTING PLANTINGS TO REMAIN WHILE IRRIGATION SYSTEM IS BEING INSTALLED OR REPAIRED) TO SUPPLEMENT IRRIGATION AND RAINFALL. THE IRRIGATION SYSTEM IS DESIGNED TO MAINTAIN THE LANDSCAPE PLANTINGS AND NOT ESTABLISH THEM. THE CONTRACTOR IS RESPONSIBLE FOR WATERING IN ALL PLANTING AREAS, REGARDLESS OF THE STATUS OF EXISTING OR PROPOSED IRRIGATION SYSTEMS.

16. CONTRACTOR IS RESPONSIBLE FOR MAINTAINING, IN FULL, ALL PLANTING AREAS (INCLUDING WATERING, SPRAYING, MULCHING, MOWING, FERTILIZING, AND WEEDING, ETC.) UNTIL THE JOB IS ACCEPTED.

17. CONTRACTOR SHALL ASSURE DRAINAGE AND PERCOLATION OF ALL PLANTING PITS PRIOR TO INSTALLATION OF PLANT MATERIAL. CORRECT IF REQUIRED TO ASSURE PERCOLATION. CONTRACTOR IS RESPONSIBLE FOR REPLACEMENT OF ALL PLANTS LOST DUE TO INADEQUATE DRAINAGE CONDITIONS.

18. CONTRACTOR SHALL CLEAN THE WORK AREAS AT THE END OF EACH WORKING DAY. LANDSCAPE RUBBISH AND DEBRIS SHALL BE COLLECTED AND DEPOSITED OR RECYCLED OFF-SITE DAILY. ALL MATERIALS, PRODUCTS, AND EQUIPMENT STORED ON-SITE SHALL BE KEPT IN AN ORGANIZED MANNER DAILY.

19. CONTRACTOR SHALL RE-GRADE ALL AREAS DISTURBED BY PLANT REMOVAL, RELOCATION, AND/OR FROM INSTALLATION WORK. THE CONTRACTOR SHALL REPLACE BY EQUAL SIZE AND QUALITY ANY AND ALL EXISTING PLANT MATERIAL DISTURBED OR DAMAGED BY PLANTING REMOVAL, RELOCATION, AND/OR INSTALLATION.

20. EXISTING TREES OR OTHER PLANT MATERIAL INDICATED ON THE PLANS TO BE RELOCATED SHALL BE HANDLED, CARED FOR, AND MAINTAINED AS NEW PLANTINGS. THE CONTRACTOR IS RESPONSIBLE FOR ANY REQUIRED ROOT PRUNING, WRAPPING, TREE SPADING OR BALL AND BURLAPPING, ADDITIONAL SUPPLEMENTAL HAND WATERING, IRRIGATION MISTERS INSTALLED AT THE TREE CANOPY, OR ANY OTHER SOUND HORTICULTURAL PRACTICE REQUIRED TO ENSURE THE SURVIVAL OF ALL RELOCATED PLANT MATERIAL.

21. THE CONTRACTOR SHALL REFER TO THE LANDSCAPE PLANTING DETAILS, SPECIFICATIONS, PLANT LIST AND PLANS FOR FURTHER AND COMPLETE PLANTING INSTALLATION INSTRUCTIONS.

22. LANDSCAPE CONTRACTOR SHALL FULLY FAMILIARIZE HIMSELF / HERSELF WITH THE PROJECT PRIOR TO BIDDING THE WORK.

23. FOR SITE GRADING AND CONTOUR INFORMATION, EXISTING VEGETATION TO REMAIN, BUILDINGS AND OTHER SITE FEATURE LOCATIONS AND THE LOCATION OF ALL ABOVE AND BELOW GROUND UTILITIES SEE THE MOST CURRENT AND UP TO DATE ARCHITECTURAL, CIVIL, ELECTRICAL, STRUCTURAL AND MECHANICAL ENGINEERING DRAWINGS AS PROVIDED BY THE OWNER OR OWNER'S REPRESENTATIVE. FIELD LOCATE ALL UNDERGROUND UTILITIES, EXISTING VEGETATION TO REMAIN AND ANY OTHER OBSTRUCTIONS AND COORDINATE WITH OWNER'S REPRESENTATIVE PRIOR TO INITIATING ANY LANDSCAPE PLANTING OR IRRIGATION INSTALLATION WORK. LANDSCAPE CONTRACTOR SHALL BE RESPONSIBLE FOR REPAIRING OR REPLACING ANY DAMAGE COMMITTED TO EXISTING OR PROPOSED ELEMENTS ABOVE OR BELOW GROUND TO ITS ORIGINAL CONDITION AND TO THE SATISFACTION OF THE OWNER AND OWNER'S REPRESENTATIVE.

24. LANDSCAPE CONTRACTOR SHALL FIELD STAKE THE LOCATION OF ALL PLANT MATERIAL AND EDGES OF PLANTING BEDS FOR THE REVIEW AND APPROVAL BY THE LANDSCAPE ARCHITECT PRIOR TO INITIATING ANY INSTALLATION OF THE LANDSCAPE PLANTINGS.

25. LANDSCAPE CONTRACTOR SHALL COORDINATE WORK WITH THE IRRIGATION CONTRACTOR AND ALL OTHER TRADES AS REQUIRED.

26. THE CONTRACTOR SHALL REQUEST INSPECTION OF THE PROJECT IN WRITING. IF ALL WORK IS SATISFACTORY AND COMPLETE IN ACCORDANCE WITH CONDITIONS OF CONTRACT DOCUMENTS, THEN THE OWNER AND LANDSCAPE ARCHITECT SHALL DECLARE THE WORK SUBSTANTIALLY COMPLETE. THE CONTRACTOR IS TO REPLACE REJECTED PLANT MATERIAL WITHIN ONE (1) WEEK OF NOTICE.

27. GUYING/STAKING PRACTICES SHALL NOT PERMIT NAILS, SCREWS, WIRES, ETC., TO PENETRATE OUTER SURFACE OF THE TREE OR PALM. PLANT MATERIAL REJECTED DUE TO THIS PRACTICE SHALL BE REPLACED AT THE CONTRACTOR'S EXPENSE. REMOVAL OF ALL STAKING AND GUYING OF TREES AND PALMS AFTER FINAL ACCEPTANCE SHALL BE THE RESPONSIBILITY OF THE OWNER.

28. ALL PLANT MATERIAL SHALL BE FLORIDA NO.1 OR BETTER AT TIME OF INSTALLATION AND SHALL BE MAINTAINED IN THIS SAME CONDITION UNTIL FINAL ACCEPTANCE. THE CONTRACTOR GUARANTEES THE PLANT MATERIAL FOR A PERIOD OF ONE (1) YEAR FOLLOWING DATE OF SUBSTANTIAL COMPLETION.

29. ALL PLANTS MUST BE HEALTHY, VIGOROUS MATERIAL, FREE OF PESTS AND DISEASE. ALL PLANT MATERIAL SHALL BE IN FULL AND STRICT ACCORDANCE TO FLORIDA NO.1 GRADE, ACCORDING TO THE GRADES AND STANDARDS FOR NURSERY PLANTS, PUBLISHED BY THE FLORIDA DEPARTMENT OF AGRICULTURE AND CONSUMER SERVICES. PLANT MATERIAL IN SOME INSTANCES EXCEED NO.1 GRADE IN ORDER TO MEET THE MINIMUM REQUIREMENTS OF THIS PROJECT.

30. ALL REPLACEMENT TREES SHALL BE A MINIMUM OF 3' FROM A PROPERTY LINE AND 6' FROM ANY UTILITIES (ABOVE OR BELOW GROUND). ALL TREES SHALL BE PLANTED AND PRUNED MUST ADHERE TO THE ANSI A300 STANDARDS AND MUST HAVE ADEQUATE ROOM, WHEN PLANTED, TO MATURE FREELY IN ACCORDANCE WITH SECTION 54-569 (2), (B), (2), (f) OF SARASOTA COUNTY TREE CODE.

31. A TREE PERMIT APPLICATION MUST BE APPROVED BY THE SARASOTA COUNTY ENVIRONMENTAL PERMITTING PROGRAM AND WILL REQUIRED PRIOR TO ANY CONSTRUCTION. NATIVE VEGETATION REMOVAL WITHIN THE DRIP LINE OF A TREE, AND/OR TREE REMOVAL.

IRRIGATION NOTES

A. ALL PROPOSED LANDSCAPING TO IRRIGATED BY A 100% AUTOMATIC SYSTEM.

B. IRRIGATION SYSTEM SHALL NOT BE INSTALLED THROUGH EXISTING PLANT COMMUNITIES.

C. IRRIGATION SPRINKLER ZONES TO BE SEPARATE FOR HIGH AND LOW WATER REQUIREMENT PLANT AREAS AND OPERATED ON DIFFERENT WATERING SCHEDULES.

D. IRRIGATION OVERTHROW TO NON-PERVIOUS AND NATURAL AREAS TO BE MINIMIZED.

E. A RAIN SENSOR IS TO BE INSTALLED WITH THE IRRIGATION SYSTEM CONTROLLER.

F. IRRIGATION PIPING TO BE LOCATED WITHIN PLANTING OR SOD AREAS WHEREVER FEASIBLE. PIPING UNDER ROADS TO BE INSTALLED WITHIN SCHEDULE 40 PVC SLEEVE.

G. A "Y" TYPE FILTER SHALL BE INSTALLED AT THE HEAD END OF LOW VOLUME LINES AND IN-LINE PRESSURE REGULATORS TO REDUCE PRESSURE NO MORE THAN 15 PSI SHALL BE UTILIZED.

H. NON-POTABLE IRRIGATION LINES TO BE PURPLE IN COLOR.

I. WHEN NECESSARY, IRRIGATION INSTALLATION WITHIN THE DRIPLINE/CANOPY OF EXISTING TREES SHOULD BE DONE IN THE MOST SENSITIVE MANNER POSSIBLE IN ORDER TO AVOID ROOT DAMAGE. PROPOSED IRRIGATION WITHIN THE DRIPLINE/CANOPY SHOULD BE "MICRO-SPRAY" LOCATED ABOVE EXISTING GRADE.

PLANT SCHEDULE

TREES	CODE	BOTANICAL NAME	COMMON NAME	SIZE	SPECIFICATIONS	QTY	REMARKS	
	AR	Acer rubrum	Red Maple	3" Cal.	10' x 4' Spr.	83		
	CS2	Conocarpus erectus 'Sericeus' *	Silver Buttonwood*	Multi-Trunk	10' x 4' Spr.	83		
	IE	Ilex x attenuata 'Eagleston'	Eagleston Holly	3" Cal.	10' x 4' Spr.	73		
	LR	Livistona decora	Ribbon Palm	12' CT		150		
	MG	Magnolia grandiflora	Southern Magnolia	3" Cal.	10' x 4' Spr.	25		
	MC	Myrica cerifera*	Wax Myrtle*	Multi-Trunk	10' x 4' Spr.	280		
	PE	Pinus eliottii	Slash Pine	3" Cal.	10' x 4' Spr.	65		
	QV	Quercus virginiana	Southern Live Oak	3" Cal.	10' x 4' Spr.	232		
	SP	Sabal palmetto	Cabbage Palmetto	15' OA Ht.		125		
	TD	Taxodium distichum	Bald Cypress	3" Cal.	10' x 4' Spr.	94		
SHRUBS	CODE	BOTANICAL NAME	COMMON NAME	SIZE		QTY	REMARKS	
	VIB7	Viburnum suspensum	Sandankwa Viburnum	7 gal	24" Ht.	1,727		
GROUND COVERS	CODE	BOTANICAL NAME	COMMON NAME	CONT	SIZE	SPACING	QTY	REMARKS
	DIV	Dianella tasmanica	Variegated Flax Lily	3 gal	12" Ht. x 12" Spr.	36" o.c.	230	
	FIC	Ficus microcarpa 'Green Island'	Green Island Ficus	3 gal	12" Ht. x 18" Spr.	36" o.c.	604	
	JUP	Juniperus chinensis 'Parsoni'	Parsoni Juniper	3 gal	12" Ht. x 18" Spr.	36" o.c.	673	
SOD AND MULCH	CODE	BOTANICAL NAME	COMMON NAME	CONT	SIZE	SPACING	QTY	REMARKS
	CYN	Cynodon dactylon '419 Hybrid'	Bermuda Grass	sod			0 sf	Contractor to Verify Quantity (SF). Solid Sod, Sand Grown, Rolled, Free of Weeds and Pests.
	PAS	Paspalum notatum	Bahia Grass	sod			0 sf	Contractor to Verify Quantity (SF). Solid Sod, Sand Grown, Rolled, Free of Weeds and Pests.
	MUL	Pine Bark Nuggets		3" Depth			0 sf	Contractor to Verify Quantity (CY).
	STE	Stenotaphrum secundatum 'Floritum'	St. Augustine Floritum Sod	sod			0 sf	Contractor to Verify Quantity (SF). Solid Sod, Sand Grown, Rolled, Free of Weeds and Pests.

BUFFER REQUIREMENTS

A LAUREL ROAD BUFFER

PER BINDING MASTER PLAN, 15' WIDE, 1 TREE / 50 L.F., WITH 2' CONTINUOUS HEDGE REQUIRED, 1,630 L.F. = 33 TREES REQUIRED.
143 TREES PROVIDED, WITH 2' CONTINUOUS HEDGE.

C SOUTH BUFFER

PER BINDING MASTER PLAN, 15' WIDE, 1 TREE / 50 L.F., WITH 2' CONTINUOUS HEDGE REQUIRED, 2,750 L.F. = 55 TREES REQUIRED.
246 TREES PROVIDED, WITH 2' CONTINUOUS HEDGE, AND OPTIONAL 6' HIGH WALL OR FENCE.

B I-75 BUFFER

PER BINDING MASTER PLAN, 15' WIDE, 1 TREE / 50 L.F., WITH 2' CONTINUOUS HEDGE REQUIRED, 1,482 L.F. = 30 TREES REQUIRED.
124 TREES PROVIDED, WITH 2' CONTINUOUS HEDGE, AND OPTIONAL 6' HIGH WALL OR FENCE.

E PINEBROOK ROAD BUFFER

PER BINDING MASTER PLAN, 15' WIDE, 1 TREE / 50 L.F., WITH 2' CONTINUOUS HEDGE REQUIRED, 960 L.F. = 20 TREES REQUIRED.
50 TREES PROVIDED, WITH 2' CONTINUOUS HEDGE.

TREE PROTECTION NOTES

A. ALL TRIMMING UNDERTAKEN ON A TREE PROTECTED BY THE PROVISIONS OF THE LAND DEVELOPMENT CODE SHALL BE IN ACCORDANCE WITH THE AMERICAN NATIONAL STANDARDS INSTITUTE (ANSI) A-300 PRUNING STANDARDS.

B. PROPOSED LAND ALTERATION ACTIVITIES SHALL NOT UNNECESSARILY REMOVE EXISTING VEGETATION AND ALTER EXISTING TOPOGRAPHY. ADEQUATE PROTECTION MEASURES (I.E., HAY BALES, BAFFLES, SODDING AND SANDBAGGING) SHALL BE PROVIDED, AS NECESSARY, TO MINIMIZE EROSION AND DOWNSTREAM SEDIMENTATION CAUSED BY SURFACE WATER RUN-OFF ON EXPOSED LAND SURFACES.

C. DURING LAND ALTERATION AND CONSTRUCTION ACTIVITIES, IT SHALL BE UNLAWFUL TO REMOVE VEGETATION BY GRUBBING OR TO PLACE SOIL DEPOSITS, DEBRIS, SOLVENTS, CONSTRUCTION MATERIAL, MACHINERY OR OTHER EQUIPMENT OF ANY KIND WITHIN THE DRIPLINE OF A TREE TO REMAIN ON THE SITE UNLESS OTHERWISE APPROVED BY THE COUNTY.

D. ANY AREAS SUBJECT TO EROSION MUST BE ADEQUATELY STABILIZED WITH VEGETATIVE MATERIAL THAT WILL, WITHIN A REASONABLE TIME FRAME, DETER SOIL DISTURBANCE. SODDING, PLUGGING, SPRIGGING OR SEEDING IS ACCEPTABLE FOR STABILIZATION; HOWEVER, SODDING MAY BE REQUIRED IN AREAS OF EROSION-PRONE SLOPES OR WHERE SLOPES ARE GREATER THAN 5:1. VEGETATION OTHER THAN GRASS IS ACCEPTABLE UNLESS OTHERWISE SPECIFIED.

E. INSTALL TREE BARRICADES TO THE FULLEST EXTENT OF THE DRIPLINE OF ALL TREES/PALMS AS POSSIBLE AND/OR TO THE MAXIMUM LIMIT OF IMPROVEMENT(S) AS POSSIBLE (OF COURSE REALIZING THAT THE TREE BARRICADES MAY HAVE TO BE "BACKED OFF" THE IMPROVEMENT(S)) BY 1' TO 2' MAXIMUM TO INSTALL THE IMPROVEMENT(S). DO NOT INSTALL TREE BARRICADES (SPECIFICALLY SILT FENCING MATERIAL) BY TRENCHING WITHIN THE DRIPLINE OF EXISTING TREES/PALMS.

F. LAND ALTERATION AND CONSTRUCTION ACTIVITIES SHALL BE APPROVED WITHIN THE DRIPLINE OF A TREE TO BE RETAINED ON THE SITE PROVIDED DESIGN TECHNIQUES ARE USED THAT MINIMIZE DAMAGE TO THE ROOT SYSTEM OF THE TREE (E.G., RETAINING WALLS, TREE WELLS, ROOT AERATION DEVICES, PERVIOUS PAVERS, PERVIOUS CONCRETE, GREEN SPACE, AS APPROPRIATE), WHERE IT IS NOT PRACTICAL FOR UNDERGROUND UTILITY LINES TO BE ROUTED AROUND THE DRIPLINE, TUNNELING SHALL BE EMPLOYED TO ROUTE THE LINES THROUGH THIS AREA.

G. PRUNING OF A GRAND OAK, WITH THE EXCEPTION OF MINOR PRUNING, IS PROHIBITED UNLESS CONDUCTED IN ACCORDANCE WITH THE ANSI A-300 PRUNING STANDARDS, AND PERFORMED BY AN ARBORIST CERTIFIED BY THE INTERNATIONAL SOCIETY OF ARBORICULTURE (ISA) OR A REGISTERED CONSULTING ARBORIST WITH THE AMERICAN SOCIETY OF CONSULTING ARBORISTS (ASCA). MINOR PRUNING IS THE PRUNING OF A TREE BY THE REMOVAL OF BRANCHES NO GREATER THAN THREE (3) INCHES IN DIAMETER AT THE POINT OF CONNECTION TO A SUPPORTING BRANCH AND SHALL BE IN ACCORDANCE WITH THE ANSI A-300 PRUNING STANDARDS. A NOTARIZED AFFIDAVIT AFFIRMING AN ISA CERTIFIED ARBORIST OR AN ASCA REGISTERED CONSULTING ARBORIST WILL CONDUCT OR PROVIDE ONSITE SUPERVISION OF THE PRUNING SHALL BE SUBMITTED TO THE COUNTY PRIOR TO THE PRUNING OF A GRAND OAK. AN ISA CERTIFIED ARBORIST OR AN ASCA REGISTERED CONSULTING ARBORIST CONTRACTED BY A PROPERTY OWNER TO PRUNE A GRAND OAK SHALL ASSUME FULL RESPONSIBILITY FOR ALL PRUNING ACTIVITIES DETERMINED IN NONCOMPLIANCE WITH STANDARDS SPECIFIED WITHIN THE LAND DEVELOPMENT CODE.

LANDSCAPE NOTES

11/2018

HORIZONTAL SCALE:

VERTICAL SCALE:

1"=4'

35 38S 19E

CROSS REFERENCE FILE NO:

PROJECT NUMBER:

215614375

CLIENT:

SARASOTA COUNTY
PUBLIC HOSPITAL BOARD
SARASOTA MEMORIAL
HOSPITAL – VENICE

DATE:

11/2018

TITLE:

LANDSCAPE NOTES

NOT FOR CONSTRUCTION

THOMAS J. KOTKIEWICZ, L.A.
FLORIDA LICENSE NO. LA0001687

INDEX NUMBER:
215614375--002--100LP

SHEET NUMBER:
LP601

OF

DESIGNER:

11/2018

DRAWN BY:

11/2018

CHECKED BY:

CONTRACT ADMIN. BY:

APPROVED BY:

ACTIVITY

INITIALS/EMP. NO.

DATE

DESIGNED BY:

TK

11/2018

DRAWN BY:

TK

11/2018

CHECKED BY:

CONTRACT ADMIN. BY:

APPROVED BY:

REVISION

DATE

DESIGNED BY / EMP. NO.

CHECKED BY / EMP. NO.

APPROVED BY

A

RESPOND TO CITY COMMENTS

02/06/19

TK

TK

Stantec

6500 Professional Parkway East, Sarasota, FL 34240-8414
Phone 941-557-5900 • Fax 941-557-5910
Certificate of Authorization #27013 • www.stantec.com

The Contractor shall verify and be responsible for all dimensions. DO NOT scale the drawing. Any errors or omissions shall be reported to Stantec without delay. The Copyright to all designs and drawings are the property of Stantec. Reproduction or use for any purpose other than that authorized by Stantec is forbidden.

CLIENT:

SARASOTA COUNTY
PUBLIC HOSPITAL BOARD
SARASOTA MEMORIAL
HOSPITAL – VENICE

PROJECT:

DATE:

11/2018

TITLE:

LANDSCAPE NOTES

NOT FOR CONSTRUCTION

THOMAS J. KOTKIEWICZ, L.A.
FLORIDA LICENSE NO. LA0001687

INDEX NUMBER:
215614375--002--100LP

SHEET NUMBER:
LP601

OF

DESIGNER:

11/2018

DRAWN BY:

11/2018

CHECKED BY:

CONTRACT ADMIN. BY:

APPROVED BY:

ACTIVITY

INITIALS/EMP. NO.

DATE

DESIGNED BY:

TK

11/2018

DRAWN BY:

TK

11/2018

CHECKED BY:

CONTRACT ADMIN. BY:

APPROVED BY:

REVISION

DATE

DESIGNED BY / EMP. NO.

CHECKED BY / EMP. NO.

APPROVED BY

A

RESPOND TO CITY COMMENTS

02/06/19

TK

TK

SCALE: 1"=400'

0' 200' 400' 800'

SITE DEVELOPABLE AREA =
2,379,288 SF = 54.6 AC.

TREE REPLACEMENT CALCULATIONS

BASED ON COUNTY ORDINANCE, SECTION 54-569, ONE REPLACEMENT TREE IS TO BE PROVIDED FOR EVERY 2,000 SF OF DEVELOPED AREA.

PHASE 1 DEVELOPABLE AREA = 2,379,288 SF = 54.6 AC.

2,379,288 SF ÷ = 1,190 TREES REQUIRED AS REPLACEMENT.

1,190 REPLACEMENT TREES PROVIDED IN PHASE 1.

LIST OF ACCEPTABLE TREE ALTERNATIVES

TREES	Common	Type	TREES	Common	Type
Acer rubrum	Red Maple	Canopy	Lagerstroemia indica*	Crape Myrtle*	Accent
Acoelorrhaphe wrightii	Paurotis Palm	Palm	Ligustrum japonicum*	Japanese Privet*	Accent
Arenga pinnata	Sugar Palm	Palm	Liquidambar styraciflua	American Sweet Gum	Canopy
Bambusa ventricosa	Buddha's Belly Bamboo	Accent	Livistona chinensis	Chinese Fan Palm	Palm
Bauhinia x blakeana	Hong Kong Orchid Tree	Canopy	Livistona decora	Ribbon Palm	Palm
Betula nigra*	River Birch*	Canopy	Livistona nitida	Nitida Palm	Palm
Bismarckia nobilis	Bismarck Palm	Palm	Magnolia grandiflora	Southern Magnolia	Canopy
Bucida buceras	Black Olive Tree	Canopy	Myrica cerifera*	Wax Myrtle*	Accent
Bucida buceras 'Shady Lady'	Shady Lady Black Olive	Canopy	Osmanthus americanus	Deviwood	Accent
Bursera simaruba	Gumbo Limbo	Canopy	Pandanus utilis	Screw Pine	Palm
Butia capitata	Pindo Palm	Palm	Peltophorum pterocarpum	Yellow Poinciana	Canopy
Calliandra surinamensis	Pink Powderpuff	Accent	Persea borbonia	Redbay	Canopy
Callistemon viminalis	Weeping Bottle Brush	Accent	Phoenix spp.	Date Palm	Palm
Cassia fistula	Golden Shower	Accent	Pinus eliottii	Slash Pine	Canopy
Chamaerops humilis	Mediterranean Fan Palm	Palm	Platanus occidentalis	American Sycamore	Canopy
Chorisia speciosa	Silk Floss Tree	Accent	Plumeria alba*	White Frangipani*	Accent
Clusia guttifera	Small Leaf Clusia	Accent	Plumeria rubra*	Red Frangipani*	Accent
Coccoloba diversifolia	Pigeon Plum	Accent	Podocarpus gracilior	Weeping Podocarpus	Accent
Coccoloba uvifera*	Sea Grape*	Canopy	Podocarpus nagi	Nagi Podocarpus	Accent
Conocarpus erectus 'Sericeus' *	Silver Buttonwood*	Canopy	Ptychosperma elegans	Alexander Palm	Palm
Conocarpus erectus*	Green Buttonwood*	Canopy	Ptychosperma macarthurii	Macarthur Palm	Palm
Copernicia alba	Copernicia Palm	Palm	Quercus laurifolia	Laurel-leaved Oak	Canopy
Cordia boissieri	Anacahuita	Accent	Quercus virginiana	Southern Live Oak	Canopy
Cordia sebestena	Orange Geiger Tree	Accent	Roystonea regia	Royal Palm	Palm
Delonix regia	Royal Poinciana	Canopy	Sabal palmetto	Cabbage Palmetto	Palm
Dypsis lutescens	Areca Palm	Palm	Swietenia mahagoni	West Indian Mahogany	Canopy
Elaeis guineensis	Oil Palm	Palm	Tabebuia spp.	Trumpet Tree	Canopy
Eriobotrya japonica	Loquat	Canopy	Taxodium distichum	Bald Cypress	Canopy
Gordonia lasianthus	Loblolly Bay	Canopy	Thrinax radiata	Florida Thatch Palm	Palm
Ilex cassine	Dahoon Holly	Canopy	Tibouchina granulosa	Purple Glory Tree	Accent
Ilex x attenuata 'Eagleston'	Eagleston Holly	Canopy	Trachycarpus fortunei	Windmill Palm	Palm
Ilex x attenuata 'East Palatka'	East Palatka Holly	Canopy	Ulmus americana	American Elm	Canopy
Jacaranda mimosifolia	Jacaranda	Canopy	Ulmus floridana	Florida Elm	Canopy
Jatropha integerrima	Spicy Jatropha	Accent	Ulmus parvifolia 'Drake'	Drake Elm	Canopy
Juniperus silicicola	Southern Red Cedar	Canopy	Viburnum obovatum	Walter's Viburnum	Accent
Koelreuteria elegans	Golden Rain Tree	Canopy	Viburnum o. 'Awabuki'	Awabuki Viburnum	Accent
			Wodyetia bifurcata	Foxtail Palm	Palm

Note: Multi-trunk trees with a (*) meeting the 10' height, shall count as a required or replacement tree.

11/2018

HORIZONTAL SCALE:

VERTICAL SCALE:

1"=4'

35 38S 19E

CROSS REFERENCE FILE NO:

PROJECT NUMBER:

215614375

CLIENT:

SARASOTA COUNTY
PUBLIC HOSPITAL BOARD
SARASOTA MEMORIAL
HOSPITAL – VENICE

DATE:

11/2018

TITLE:

LANDSCAPE NOTES

NOT FOR CONSTRUCTION

THOMAS J. KOTKIEWICZ, L.A.
FLORIDA LICENSE NO. LA0001687

INDEX NUMBER:
215614375--002--100LP

SHEET NUMBER:
LP601

OF

DESIGNER:

11/2018

DRAWN BY:

11/2018

CHECKED BY:

CONTRACT ADMIN. BY:

APPROVED BY:

ACTIVITY

INITIALS/EMP. NO.

DATE

DESIGNED BY:

TK

11/2018

DRAWN BY:

TK

11/2018

CHECKED BY:

CONTRACT ADMIN. BY:

APPROVED BY:

REVISION

DATE

DESIGNED BY / EMP. NO.

CHECKED BY / EMP. NO.

APPROVED BY

A

RESPOND TO CITY COMMENTS

02/06/19

TK

TK

Stantec

6500 Professional Parkway East, Sarasota, FL 34240-8414
Phone 941-557-5900 • Fax 941-557-5910
Certificate of Authorization #27013 • www.stantec.com

The Contractor shall verify and be responsible for all dimensions. DO NOT scale the drawing. Any errors or omissions shall be reported to Stantec without delay. The Copyright to all designs and drawings are the property of Stantec. Reproduction or use for any purpose other than that authorized by Stantec is forbidden.

CLIENT:

SARASOTA COUNTY
PUBLIC HOSPITAL BOARD
SARASOTA MEMORIAL
HOSPITAL – VENICE

PROJECT:

DATE:

11/2018

TITLE:

LANDSCAPE NOTES

NOT FOR CONSTRUCTION

THOMAS J. KOTKIEWICZ, L.A.
FLORIDA LICENSE NO. LA0001687

INDEX NUMBER:
215614375--002--100LP

SHEET NUMBER:
LP601

OF

DESIGNER:

11/2018

DRAWN BY:

11/2018

CHECKED BY:

CONTRACT ADMIN. BY:

APPROVED BY:

ACTIVITY

INITIALS/EMP. NO.

DATE

DESIGNED BY:

TK

11/2018

DRAWN BY:

TK

11/2018

CHECKED BY:

CONTRACT ADMIN. BY:

APPROVED BY:

REVISION

DATE

DESIGNED BY / EMP. NO.

CHECKED BY / EMP. NO.

APPROVED BY

A

RESPOND TO CITY COMMENTS

02/06/19

TK

TK

SCALE: 1"=400'

0' 200' 400' 800'

SITE DEVELOPABLE AREA =
2,379,288 SF = 54.6 AC.

TREE REPLACEMENT CALCULATIONS

BASED ON COUNTY ORDINANCE, SECTION 54-569, ONE REPLACEMENT TREE IS TO BE PROVIDED FOR EVERY 2,000 SF OF DEVELOPED AREA.

PHASE 1 DEVELOPABLE AREA = 2,379,288 SF = 54.6 AC.

2,379,288 SF ÷ = 1,190 TREES REQUIRED AS REPLACEMENT.

1,190 REPLACEMENT TREES PROVIDED IN PHASE 1.

LIST OF ACCEPTABLE TREE ALTERNATIVES

TREES	Common	Type	TREES	Common	Type
Acer rubrum	Red Maple	Canopy	Lagerstroemia indica*	Crape Myrtle*	Accent
Acoelorrhaphe wrightii	Paurotis Palm	Palm	Ligustrum japonicum*	Japanese Privet*	Accent
Arenga pinnata	Sugar Palm	Palm	Liquidambar styraciflua	American Sweet Gum	Canopy
Bambusa ventricosa	Buddha's Belly Bamboo	Accent	Livistona chinensis	Chinese Fan Palm	Palm
Bauhinia x blakeana	Hong Kong Orchid Tree	Canopy	Livistona decora	Ribbon Palm	Palm
Betula nigra*	River Birch*	Canopy	Livistona nitida	Nitida Palm	Palm
Bismarckia nobilis	Bismarck Palm	Palm	Magnolia grandiflora	Southern Magnolia	Canopy
Bucida buceras	Black Olive Tree	Canopy	Myrica cerifera*	Wax Myrtle*	Accent
Bucida buceras 'Shady Lady'	Shady Lady Black Olive	Canopy	Osmanthus americanus	Deviwood	Accent
Bursera simaruba	Gumbo Limbo	Canopy	Pandanus utilis	Screw Pine	Palm
Butia capitata	Pindo Palm	Palm	Peltophorum pterocarpum	Yellow Poinciana	Canopy
Calliandra surinamensis	Pink Powderpuff	Accent	Persea borbonia	Redbay	Canopy
Callistemon viminalis	Weeping Bottle Brush	Accent	Phoenix spp.	Date Palm	Palm
Cassia fistula	Golden Shower	Accent	Pinus eliottii	Slash Pine	Canopy
Chamaerops humilis	Mediterranean Fan Palm	Palm	Platanus occidentalis	American Sycamore	Canopy
Chorisia speciosa	Silk Floss Tree	Accent	Plumeria alba*	White Frangipani*	Accent
Clusia guttifera	Small Leaf Clusia	Accent	Plumeria rubra*	Red Frangipani*	Accent
Coccoloba diversifolia	Pigeon Plum	Accent	Podocarpus gracilior	Weeping Podocarpus	Accent
Coccoloba uvifera*	Sea Grape*	Canopy	Podocarpus nagi	Nagi Podocarpus	Accent