



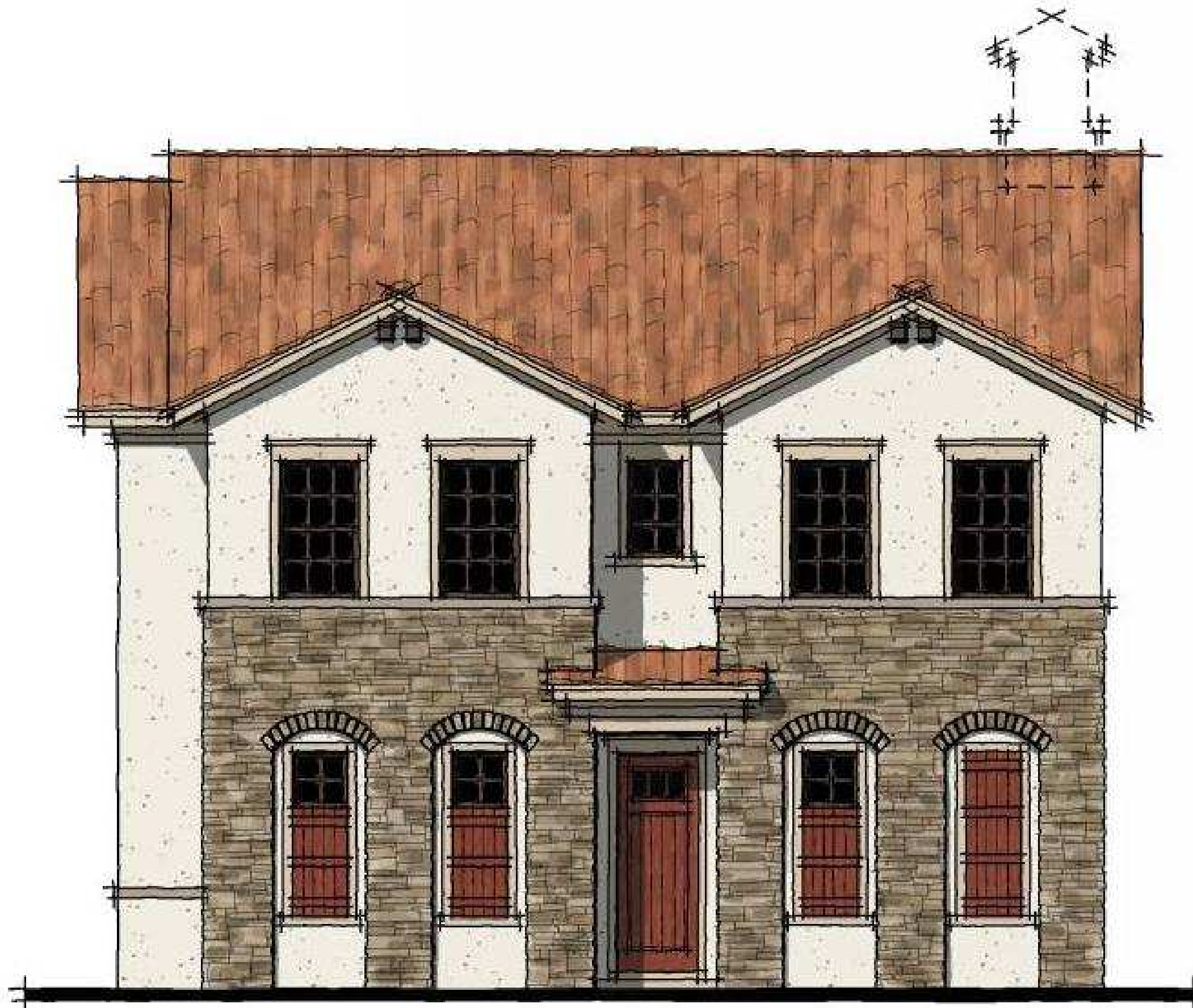
PROPOSED TH 4-FLEX STREETSCAPE
ARCATA DEL SOL - VENICE FLORIDA



Elevation 1 Color Scheme A

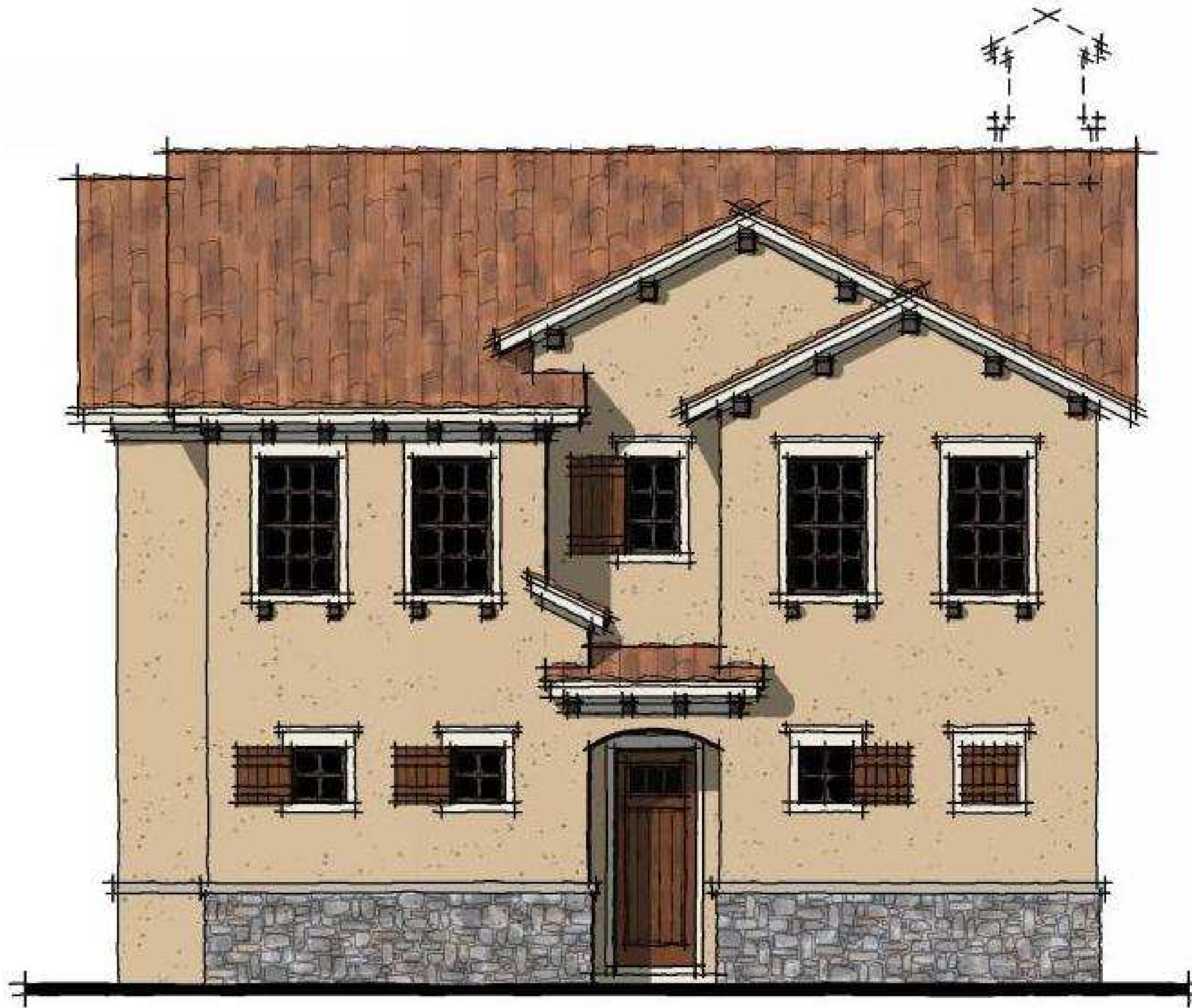


Elevation 2 Color Scheme C



Elevation 1 (two story) Color Scheme B

Arcata Del Sol

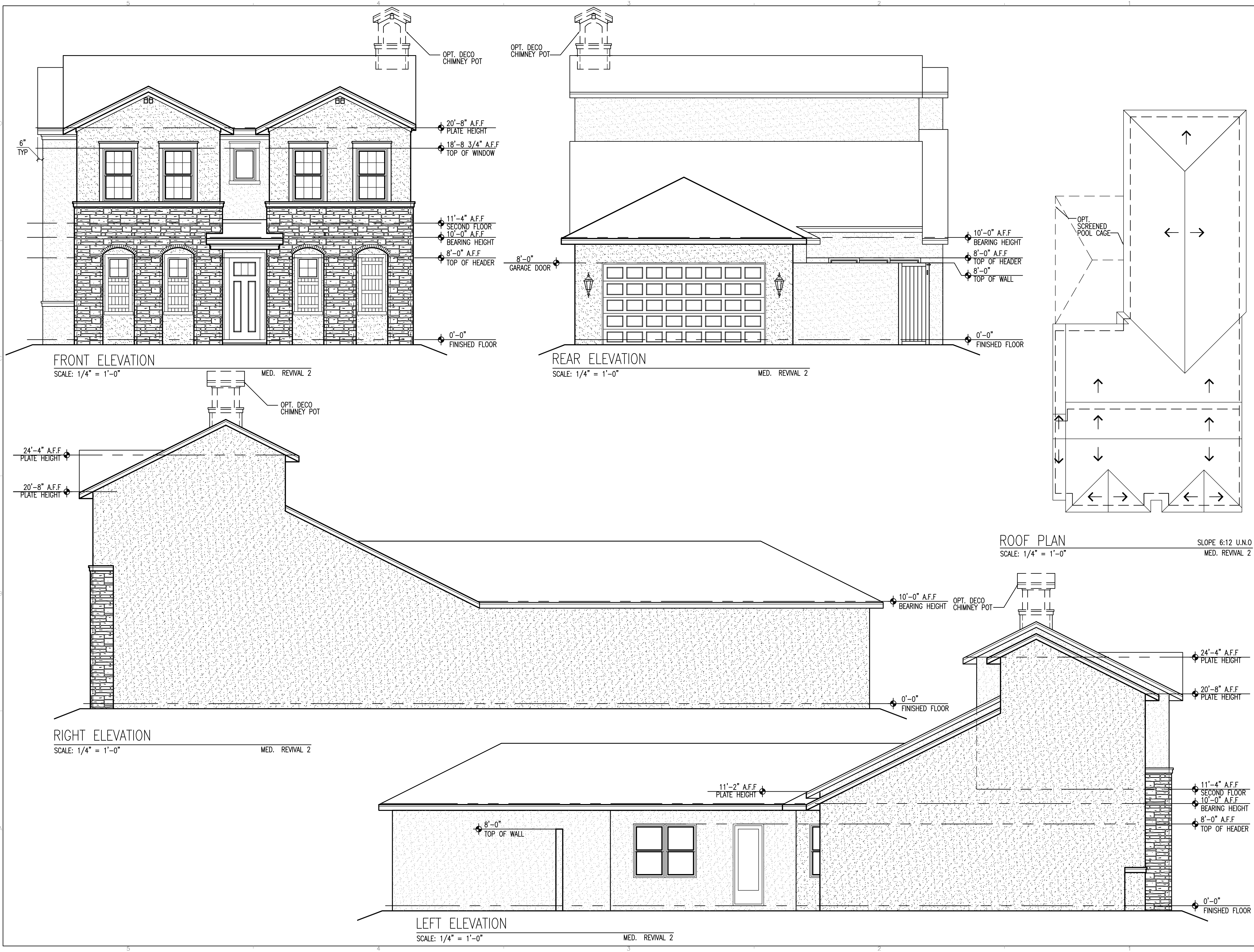


Elevation 2 (two story) Color Scheme D

Arcata Del Sol



Monument Sign



SEAL

ARCHITECT

CAPSTONE
project services, plc

333 S. Tamiami Trail, Suite 293
Venice, FL 34285
phone: 407-749-9033
website: capstoneps.net

office locations: roanoke, va - venice, fl - ft. myers, fl
FL cert. of auth.: AA26002199

CONSULTANTS

PROJECT INFO

ARCATA DEL SOL

A NEW RESIDENTIAL PROJECT

DESIGNED FOR:

MPS DEVELOPMENT AND
CONSTRUCTION, LLC

333 TAMIAMBI TRAIL, SUITE 205
VENICE, FL 34285

SHEET TITLE

**(2 STORY)
ELEVATIONS
MED. REVIVAL 2**

MARK	DATE	DESCRIPTION

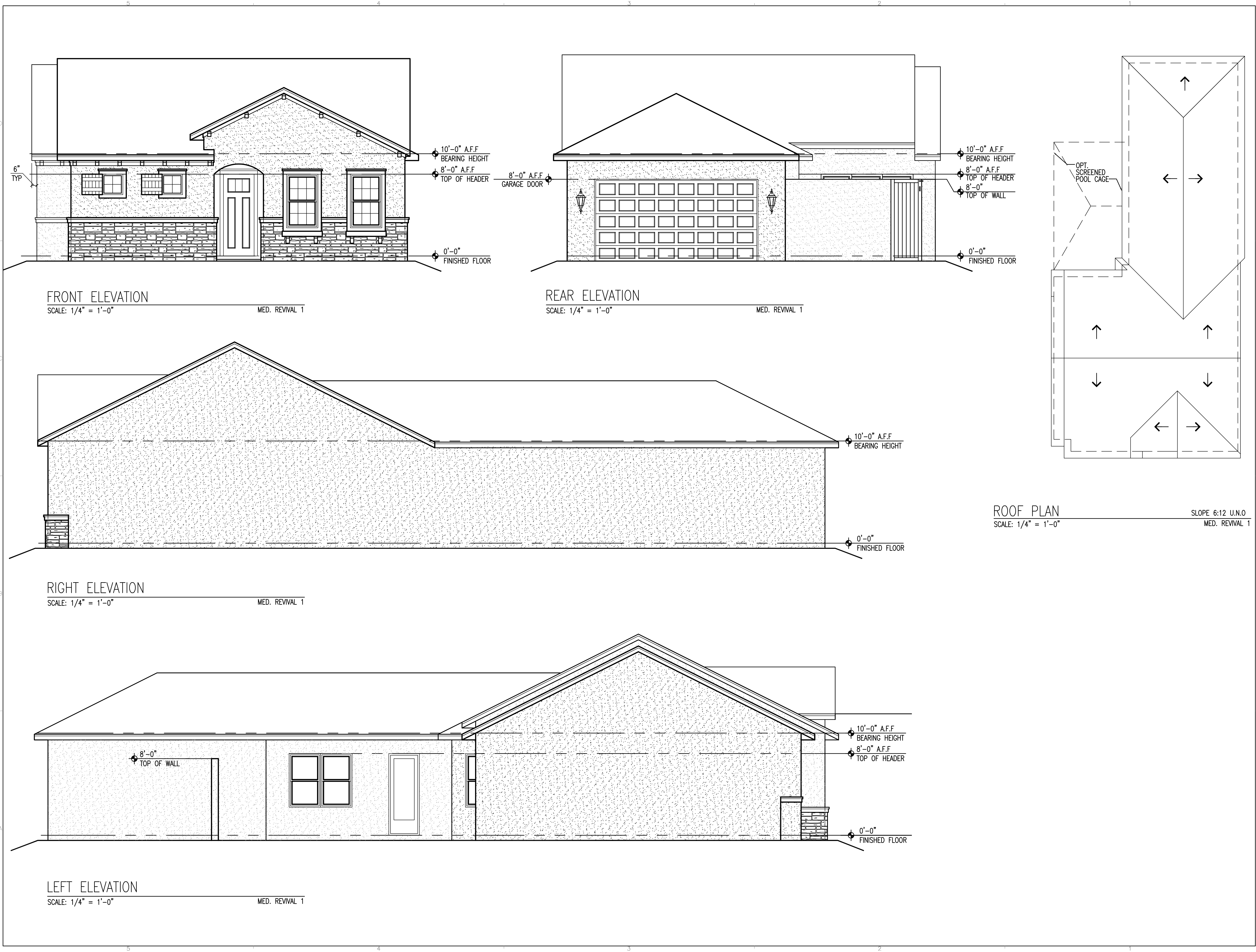
REVISIONS

PROJECT NO: CPS2018-63.4
CAD DWG FILE: CPS2018-63.4-A-MASTER
DRAWN BY: WAM
CHK'D BY: OMS
DATE: 8/27/2018 - NOT FOR CONSTRUCTION

SHEET NO.

A-252

DATE: Monday, August 27, 2018 - 3:11:26 pm



SEAL

ARCHITECT

CAPSTONE
project services, plc

333 S. Tamiami Trail, Suite 293
Venice, FL 34285
phone: 407-749-9033
website: capstoneps.net

office locations: roanoke, va - venice, fl - ft. myers, fl
FL cert. of auth.: AA26002199

CONSULTANTS

PROJECT INFO

ARCATA DEL SOL

A NEW RESIDENTIAL PROJECT

DESIGNED FOR:

MPS DEVELOPMENT AND
CONSTRUCTION, LLC

333 TAMIA MI TRAIL, SUITE 205
VENICE, FL 34285

SHEET TITLE

**ELEVATIONS
MED. REVIVAL 1**

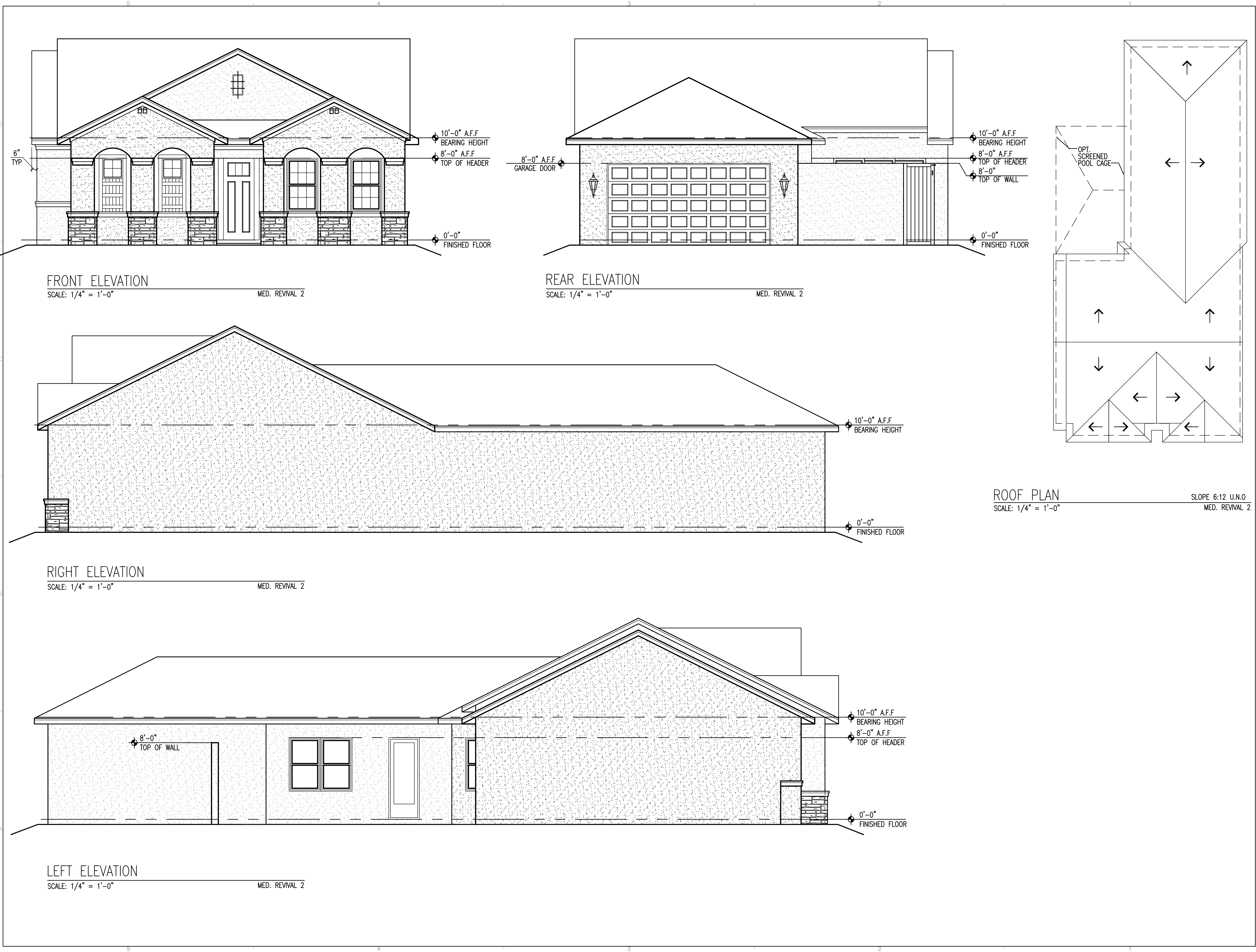
MARK	DATE	DESCRIPTION

PROJECT NO: CPS2018-63.4
CAD DWG FILE: CPS2018-63.4-A-MASTER
DRAWN BY: WAM
CHK'D BY: OMS
DATE: 8/27/2018 - NOT FOR CONSTRUCTION

SHEET NO.

A-201

DATE: Monday, August 27, 2018 - 9:43:27 am



SEAL

ARCHITECT

CAPSTONE
project services, plc

333 S. Tamiami Trail, Suite 293
Venice, FL 34285
phone: 407-749-9033
website: capstoneps.net

office locations: roanoke, va - venice, fl - ft. myers, fl
FL cert. of auth.: AA26002199

CONSULTANTS

PROJECT INFO

ARCATA DEL SOL

A NEW RESIDENTIAL PROJECT

DESIGNED FOR:

MPS DEVELOPMENT AND
CONSTRUCTION, LLC

333 TAMIAAMI TRAIL, SUITE 205
VENICE, FL 34285

SHEET TITLE

ELEVATIONS MED. REVIVAL 2

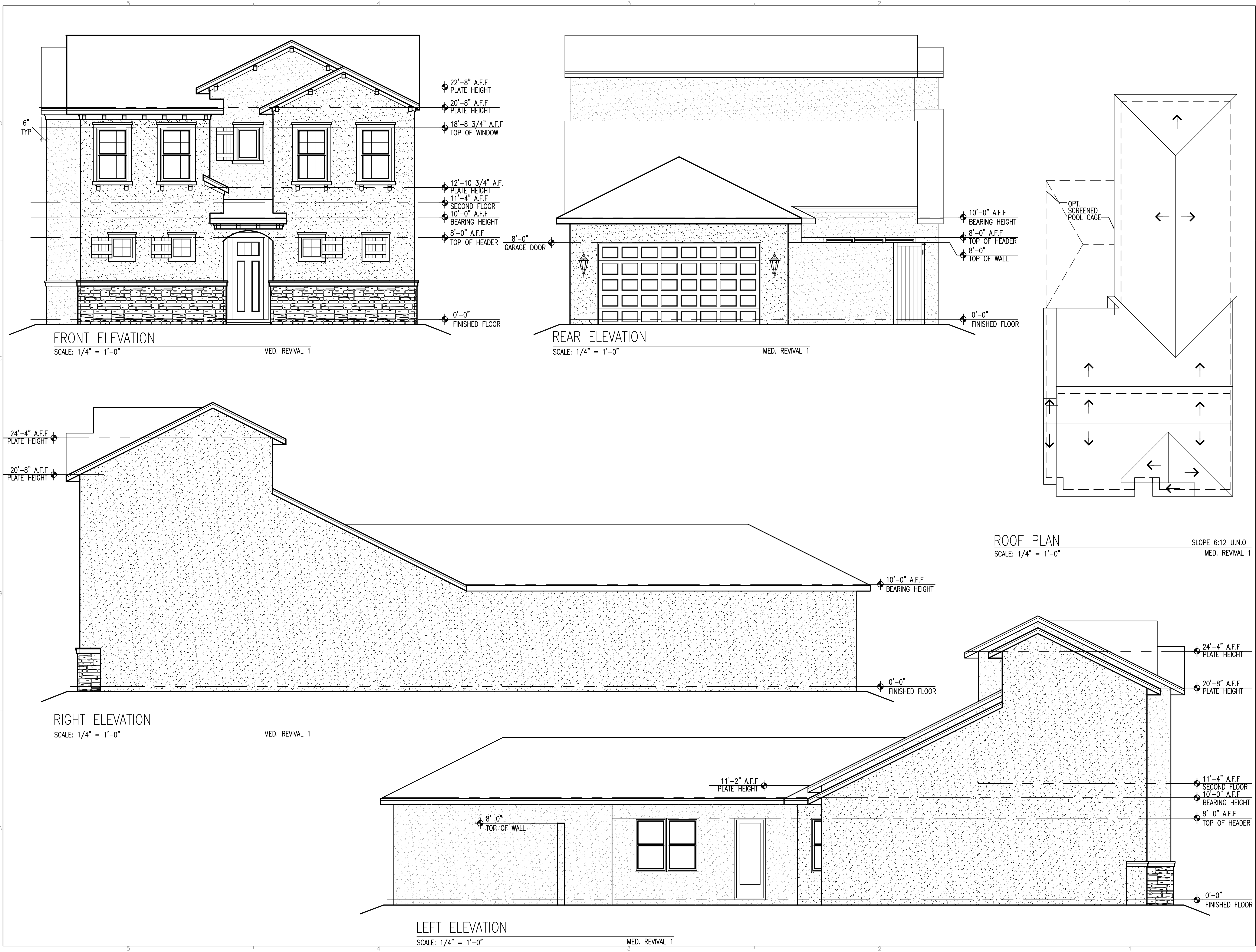
REVISIONS		
MARK	DATE	DESCRIPTION

PROJECT NO: CPS2018-63.4
CAD DWG FILE: CPS2018-63.4-A-MASTER
DRAWN BY: WAM
CHK'D BY: OMS
DATE: 8/27/2018 - NOT FOR CONSTRUCTION

SHEET NO.

A-202

DATE: Monday, August 27, 2018 - 9:43:30 am



SEAL

ARCHITECT

CAPSTONE
project services, plc

333 S. Tamiami Trail, Suite 293
Venice, FL 34285
phone: 407-749-9033
website: capstoneps.net

office locations: roanoke, va - venice, fl - ft. myers, fl
FL cert. of auth.: AA26002199

CONSULTANTS

PROJECT INFO

ARCATA DEL SOL

A NEW RESIDENTIAL PROJECT

DESIGNED FOR:

MPS DEVELOPMENT AND
CONSTRUCTION, LLC

333 TAMIAAMI TRAIL, SUITE 205
VENICE, FL 34285

SHEET TITLE

**(2 STORY)
ELEVATIONS
MED. REVIVAL 1**

REVISIONS

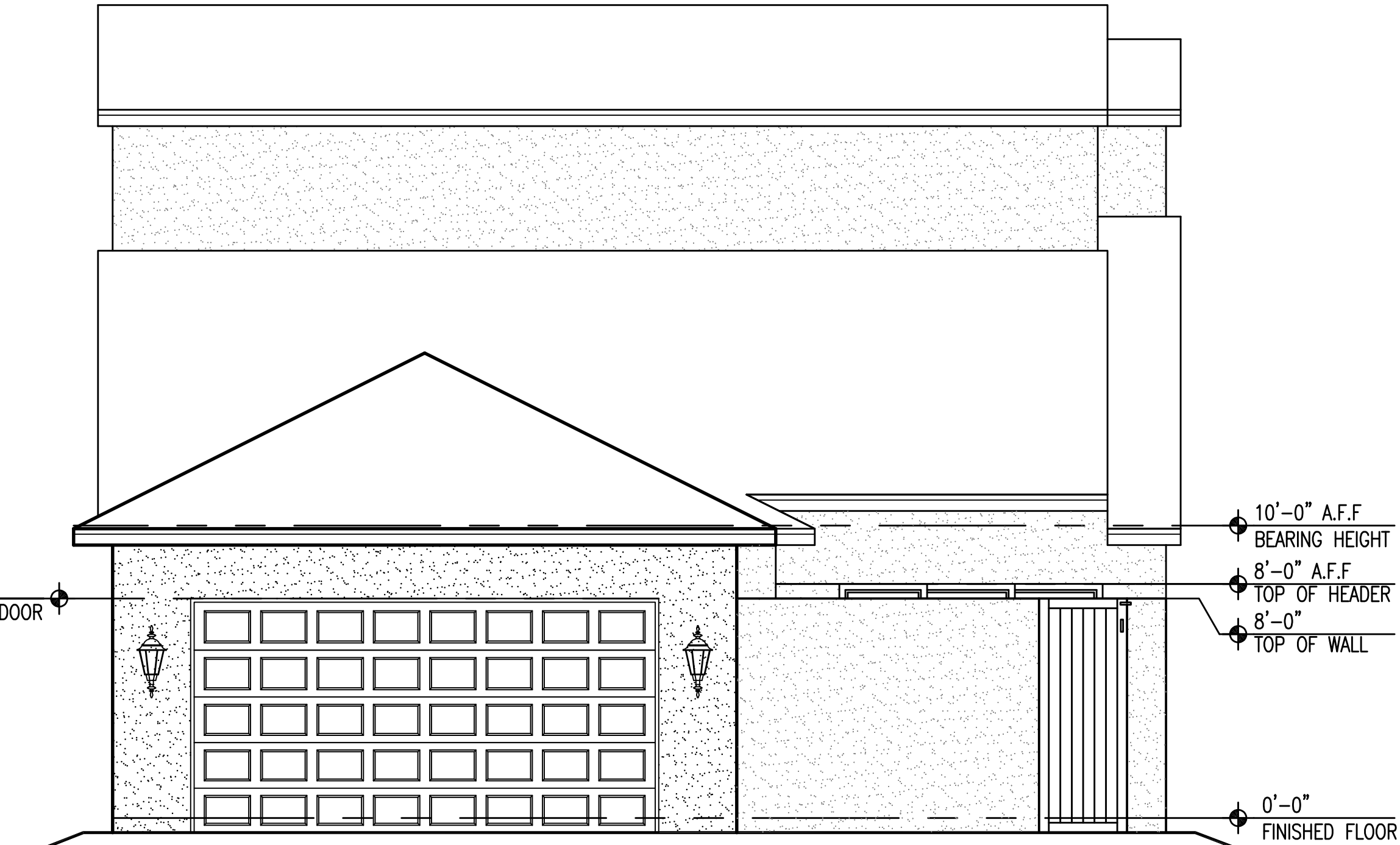
MARK	DATE	DESCRIPTION

PROJECT NO: CPS2018-63.4
CAD DWG FILE: CPS2018-63.4-A-MASTER
DRAWN BY: WAM
CHK'D BY: OMS
DATE: 8/27/2018 - NOT FOR CONSTRUCTION
SHEET NO.

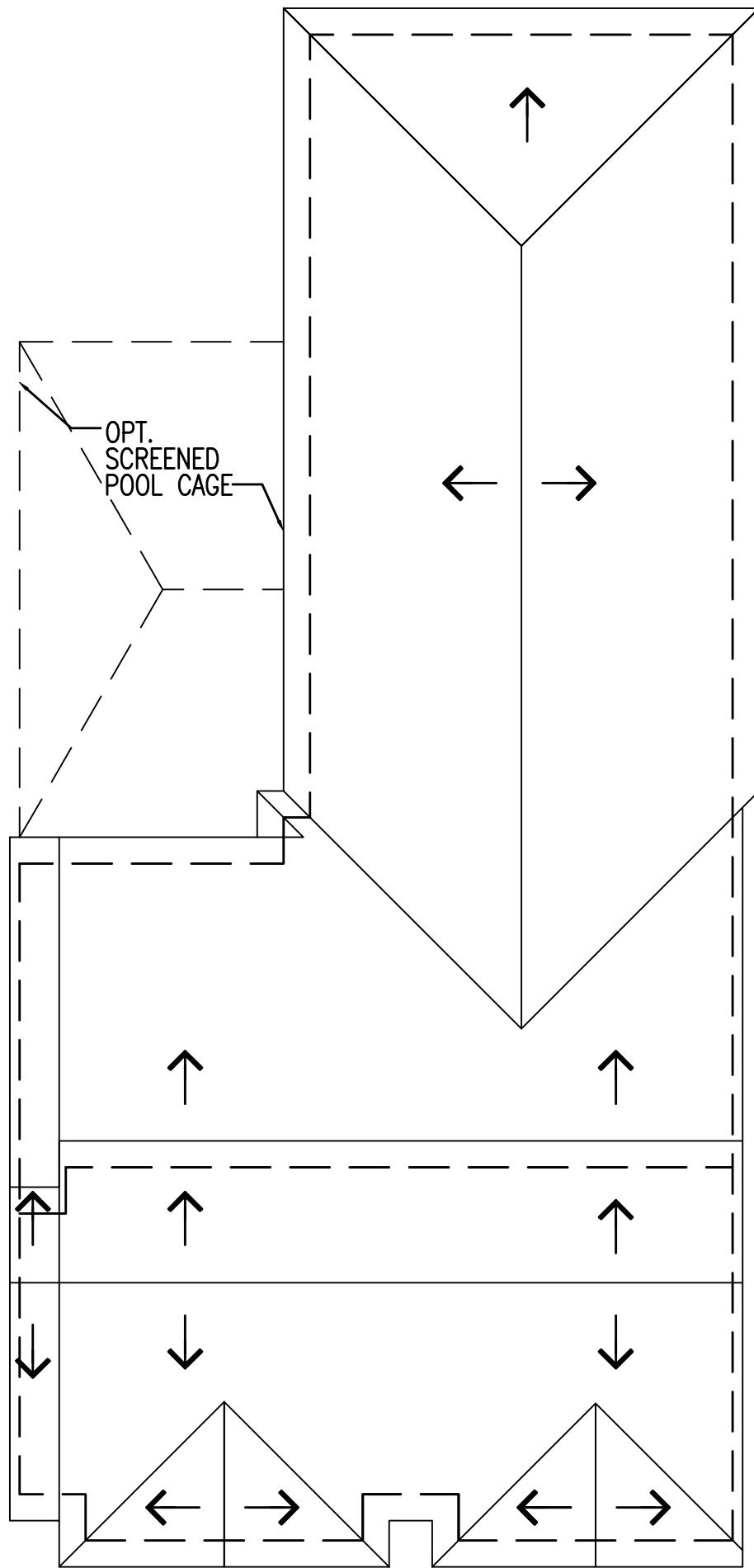
A-251



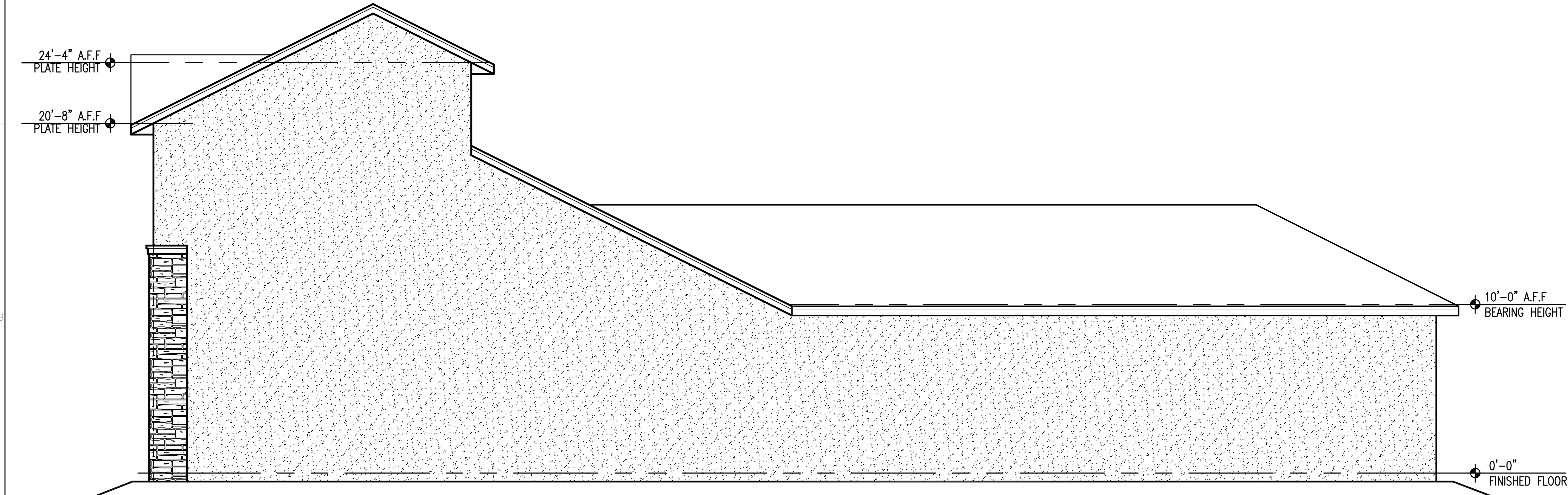
FRONT ELEVATION
SCALE: 1/4" = 1'-0" MED. REVIVAL 2



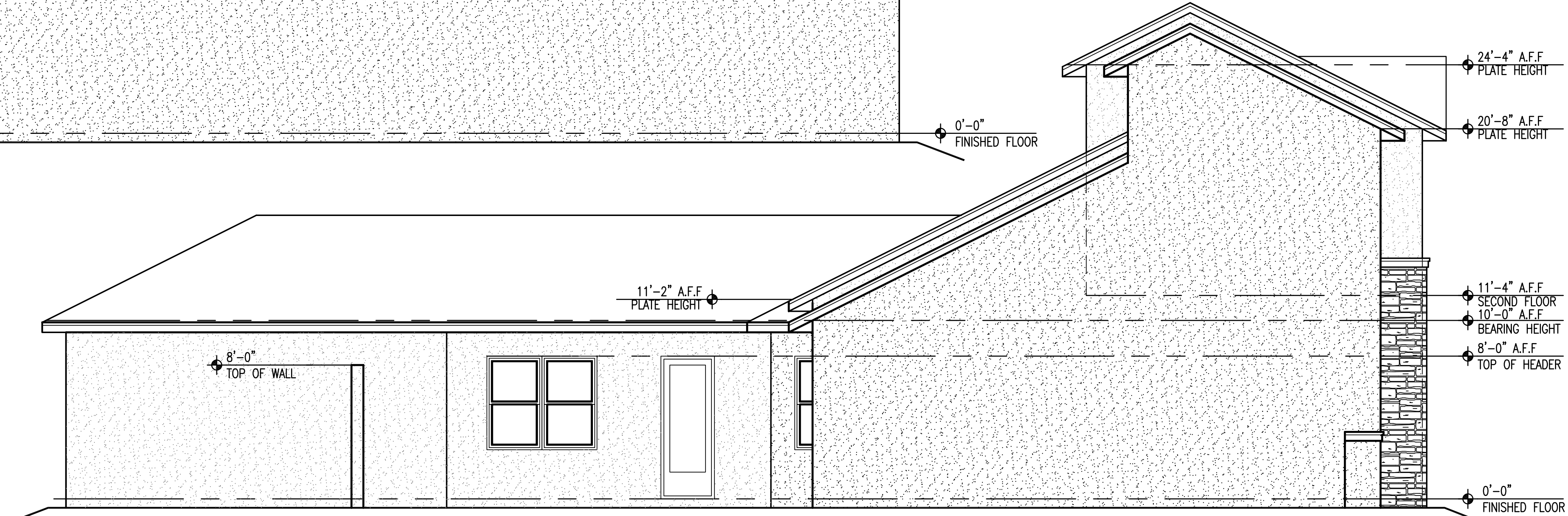
REAR ELEVATION
SCALE: 1/4" = 1'-0" MED. REVIVAL 2



ROOF PLAN
SCALE: 1/4" = 1'-0" MED. REVIVAL 2
SLOPE 6:12 U.N.O.



RIGHT ELEVATION
SCALE: 1/4" = 1'-0" MED. REVIVAL 2



LEFT ELEVATION
SCALE: 1/4" = 1'-0" MED. REVIVAL 2

SEAL

ARCHITECT



333 S. Tamiami Trail, Suite 293
Venice, FL 34285
phone: 407-749-9033
website: capstoneps.net
office locations: roanoke, va - venice, fl - ft. myers, fl
FL cert. of auth.: AA26002199

CONSULTANTS

PROJECT INFO

ARCATA DEL SOL

A NEW RESIDENTIAL PROJECT

DESIGNED FOR:
MPS DEVELOPMENT AND
CONSTRUCTION, LLC
333 TAMIA MI TRAIL, SUITE 205
VENICE, FL 34285

SHEET TITLE

(2 STORY)
ELEVATIONS
MED. REVIVAL 2

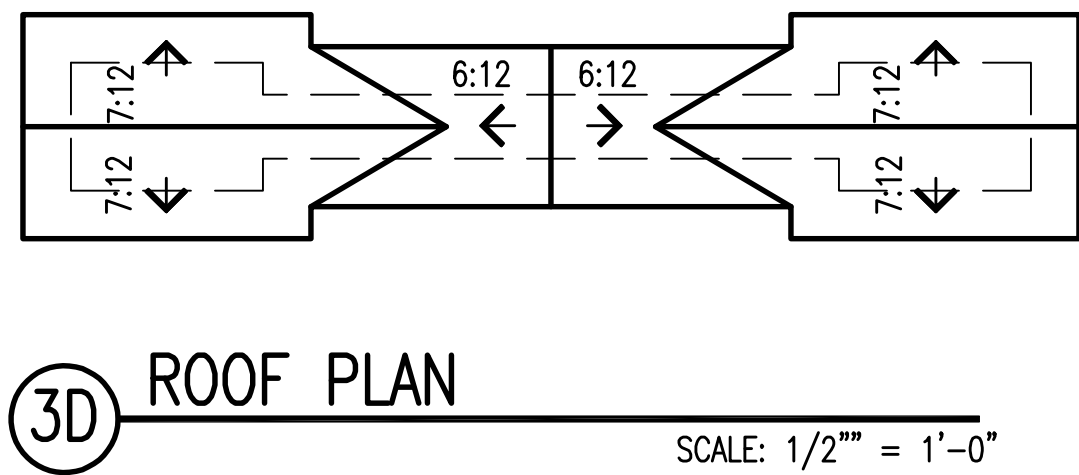
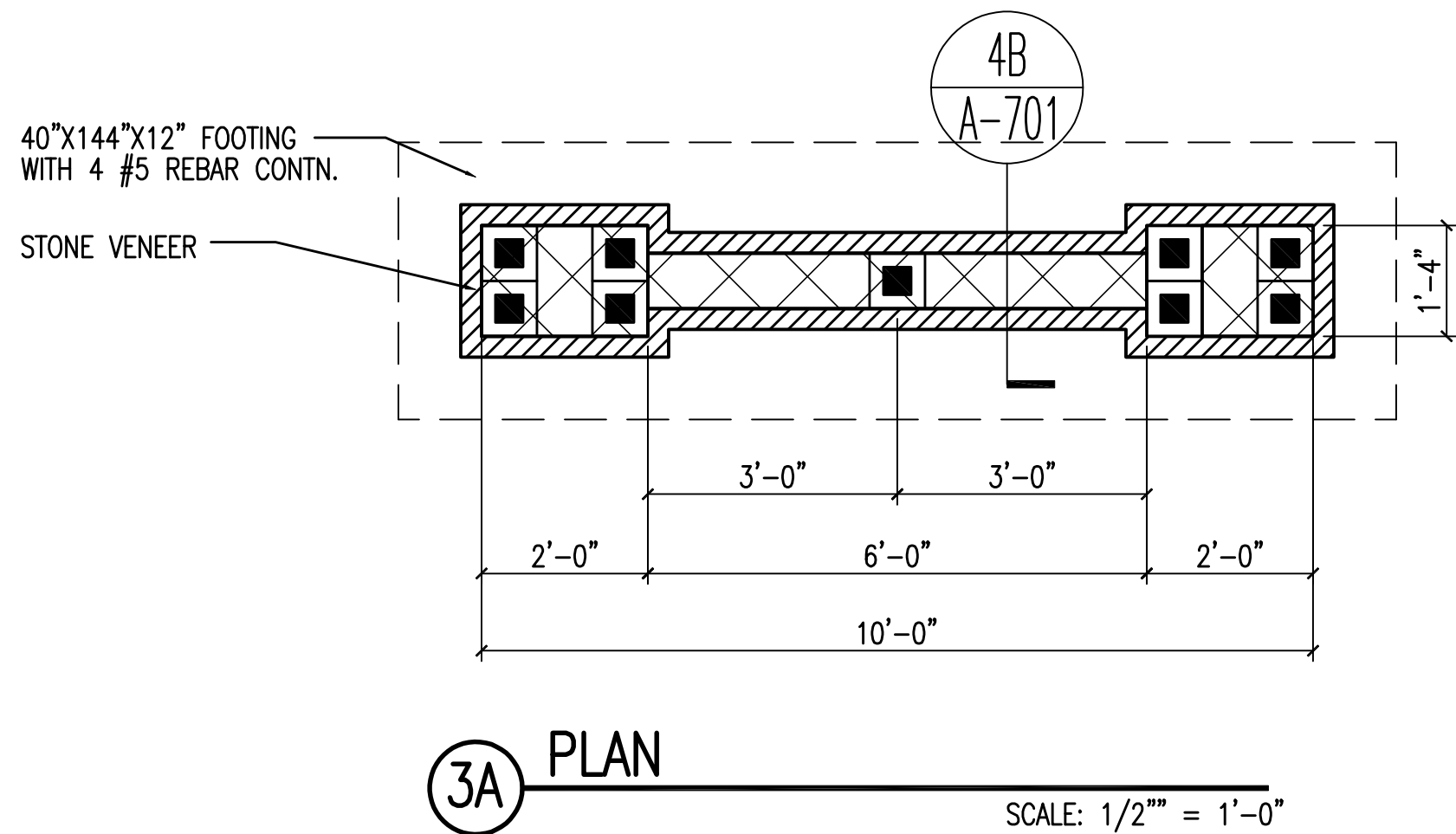
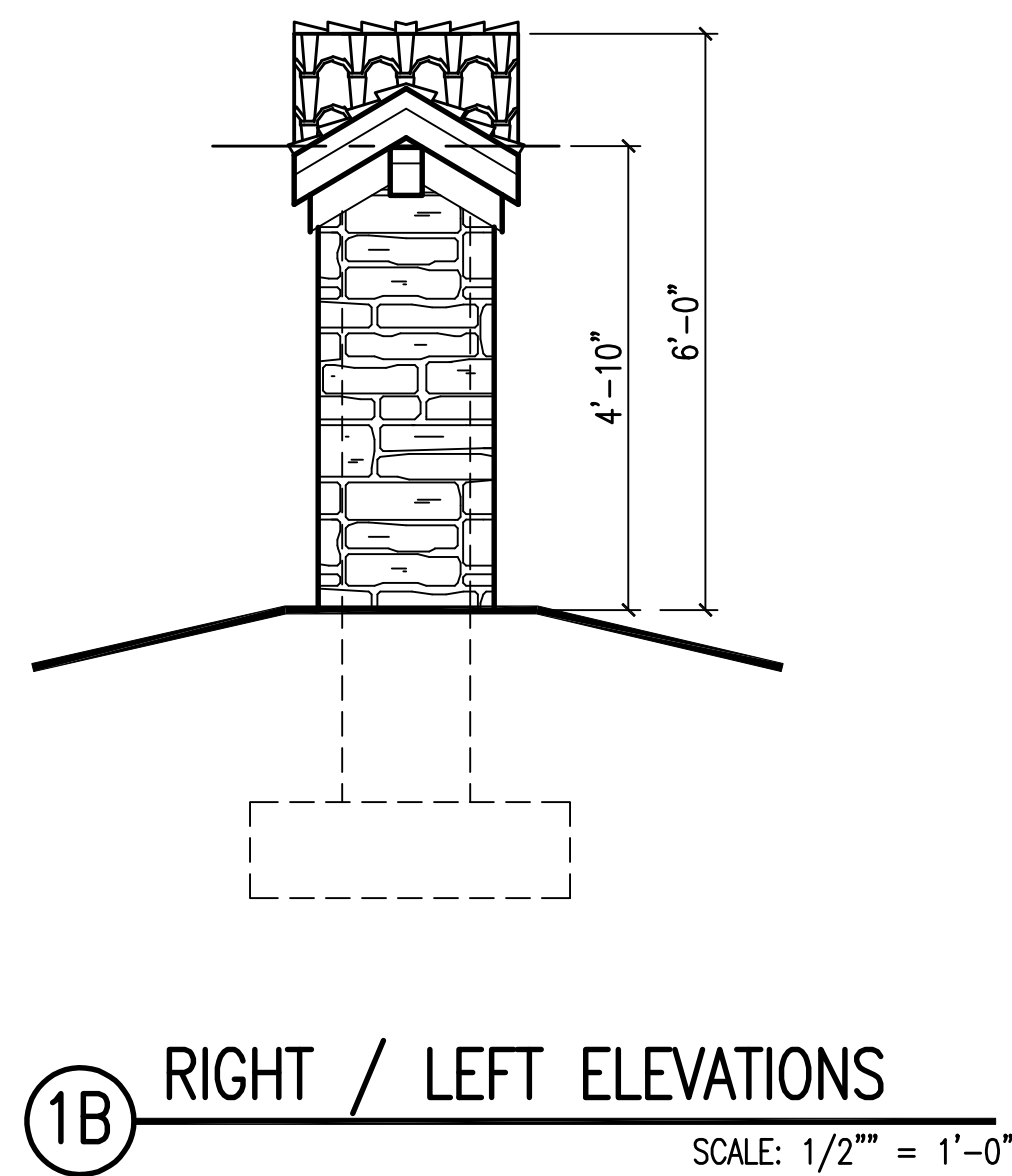
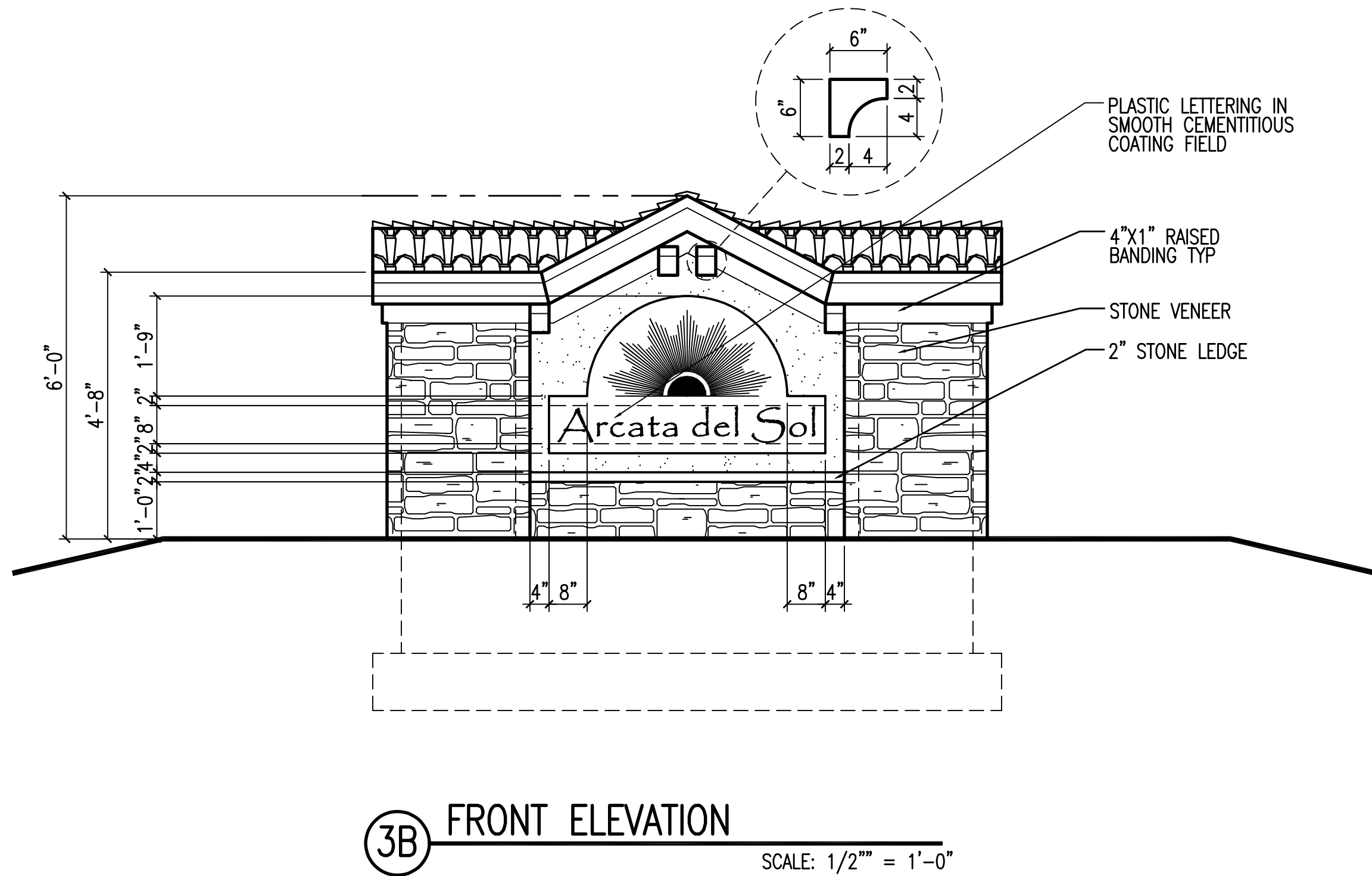
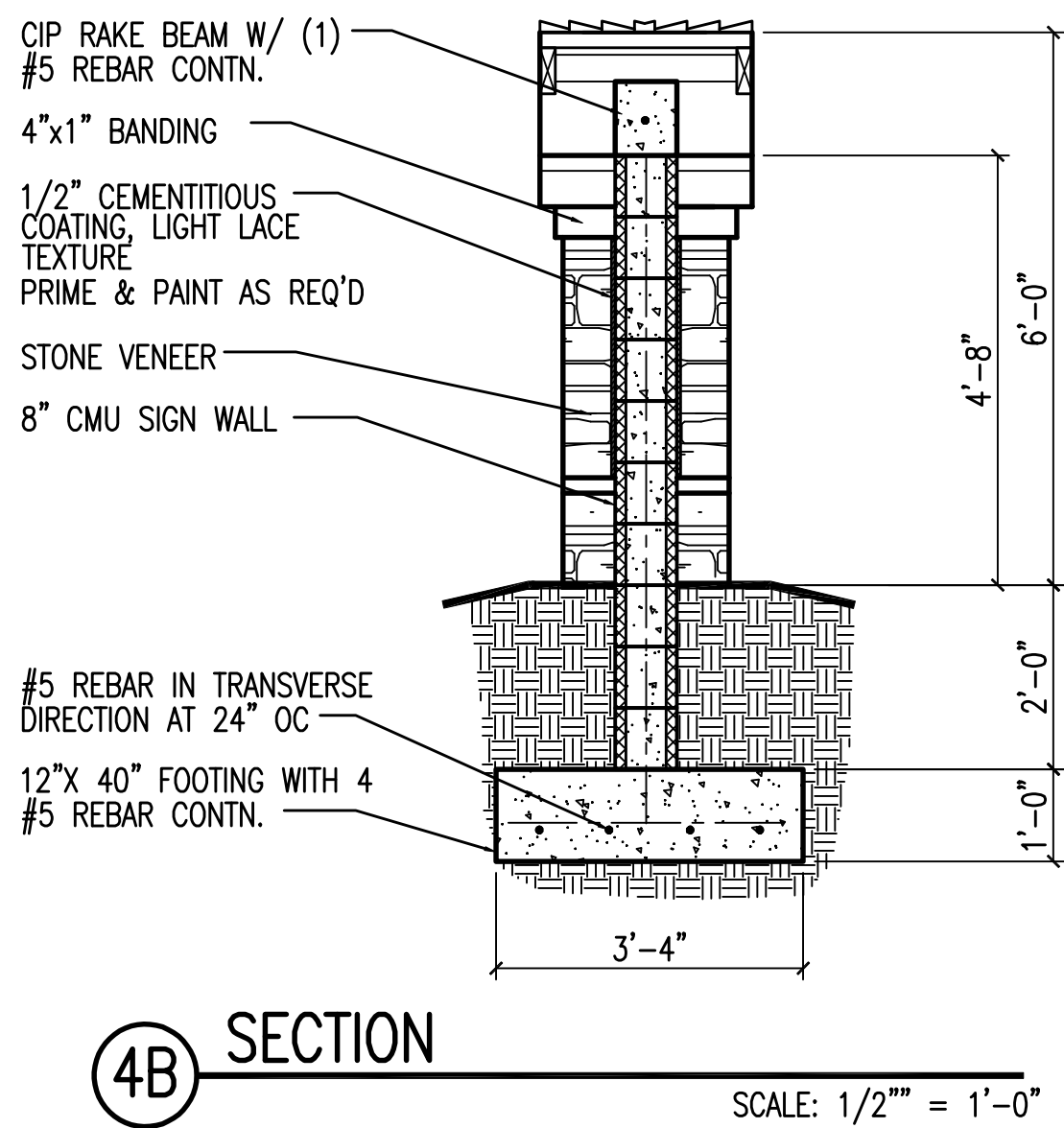
REVISIONS

MARK	DATE	DESCRIPTION

PROJECT NO: CPS2018-63.4
CAD DWG FILE: CPS2018-63.4-A-MASTER
DRAWN BY: WAM
CHK'D BY: OMS
DATE: 8/27/2018 - NOT FOR CONSTRUCTION
SHEET NO.

A-252

DWG: Sunday, August 26, 2018 - 10:05:23 pm



SEAL

ARCHITECT



333 S. Tamiami Trail, Suite 293
Venice, FL 34285
phone: 407-749-9033
website: capstoneps.net

office locations: roanoke, va - venice, fl - ft. myers, fl
FL cert. of auth.: AA26002199

CONSULTANTS

PROJECT INFO

ARCATA DEL SOL

A NEW RESIDENTIAL PROJECT

DESIGNED FOR:

MPS DEVELOPMENT AND
CONSTRUCTION, LLC

333 TAMIA MI TRAIL, SUITE 205
VENICE, FL 34285

SHEET TITLE

MONUMENT SIGN

REVISIONS

MARK	DATE	DESCRIPTION

PROJECT NO: CPS2018-63.4

CAD DWG FILE: CPS2018-63.4-A-MASTER

DRAWN BY: WAM

CHK'D BY: OMS

DATE: 8/27/2018 - NOT FOR CONSTRUCTION

SHEET NO.

A-701