











**Bill Furst**  
**SARASOTA COUNTY**  
**PROPERTY APPRAISER**

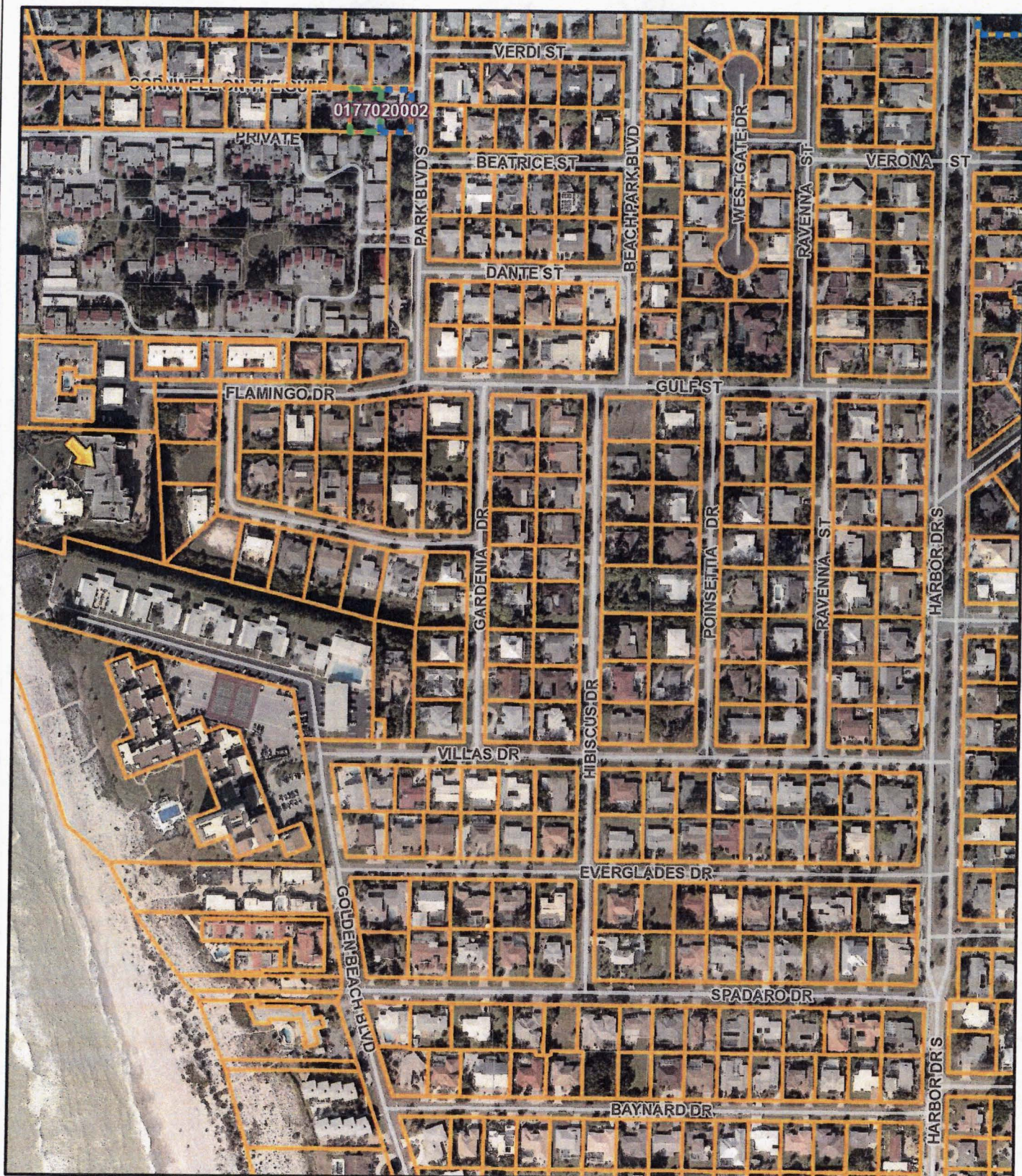
0 0.045 0.09 Miles

*This map is a product of the Sarasota County Property Appraiser's Office.  
 No warranties are expressed or implied.*









**Bill Furst**  
**SARASOTA COUNTY**  
**PROPERTY APPRAISER**

0 0.045 0.09 Miles

*This map is a product of the Sarasota County Property Appraiser's Office.  
 No warranties are expressed or implied.*





VENUE  
CONTACT

PARKING FOR  
**Luna**  
RESTAURANT ONLY  
All Othering Will Be Towed!





**Bill Furst**  
**SARASOTA COUNTY**  
**PROPERTY APPRAISER**

0 0.09 0.18 Miles

*This map is a product of the Sarasota County Property Appraiser's Office.  
 No warranties are expressed or implied.*

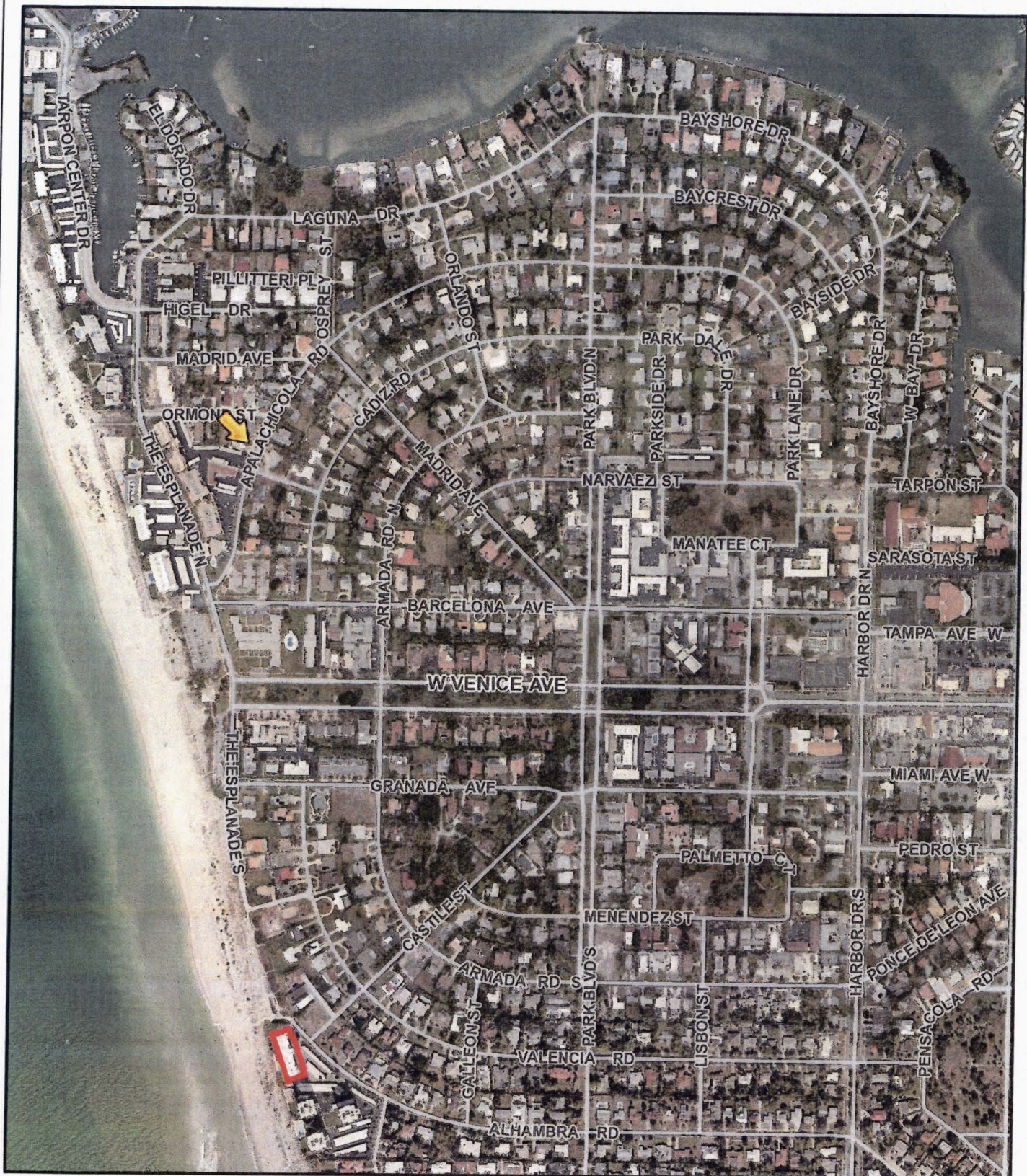












**Bill Furst**  
**SARASOTA COUNTY**  
**PROPERTY APPRAISER**

0 0.09 0.18 Miles

*This map is a product of the Sarasota County Property Appraiser's Office.  
 No warranties are expressed or implied.*













**Bill Furst**  
**SARASOTA COUNTY**  
**PROPERTY APPRAISER**

0 0.09 0.18 Miles

*This map is a product of the Sarasota County Property Appraiser's Office.  
 No warranties are expressed or implied.*





















**Bill Furst**  
**SARASOTA COUNTY**  
**PROPERTY APPRAISER**

0 0.09 0.18 Miles

*This map is a product of the Sarasota County Property Appraiser's Office.  
 No warranties are expressed or implied.*













**Bill Furst**  
**SARASOTA COUNTY**  
**PROPERTY APPRAISER**

0 0.02 0.04 Miles

*This map is a product of the Sarasota County Property Appraiser's Office.  
 No warranties are expressed or implied.*

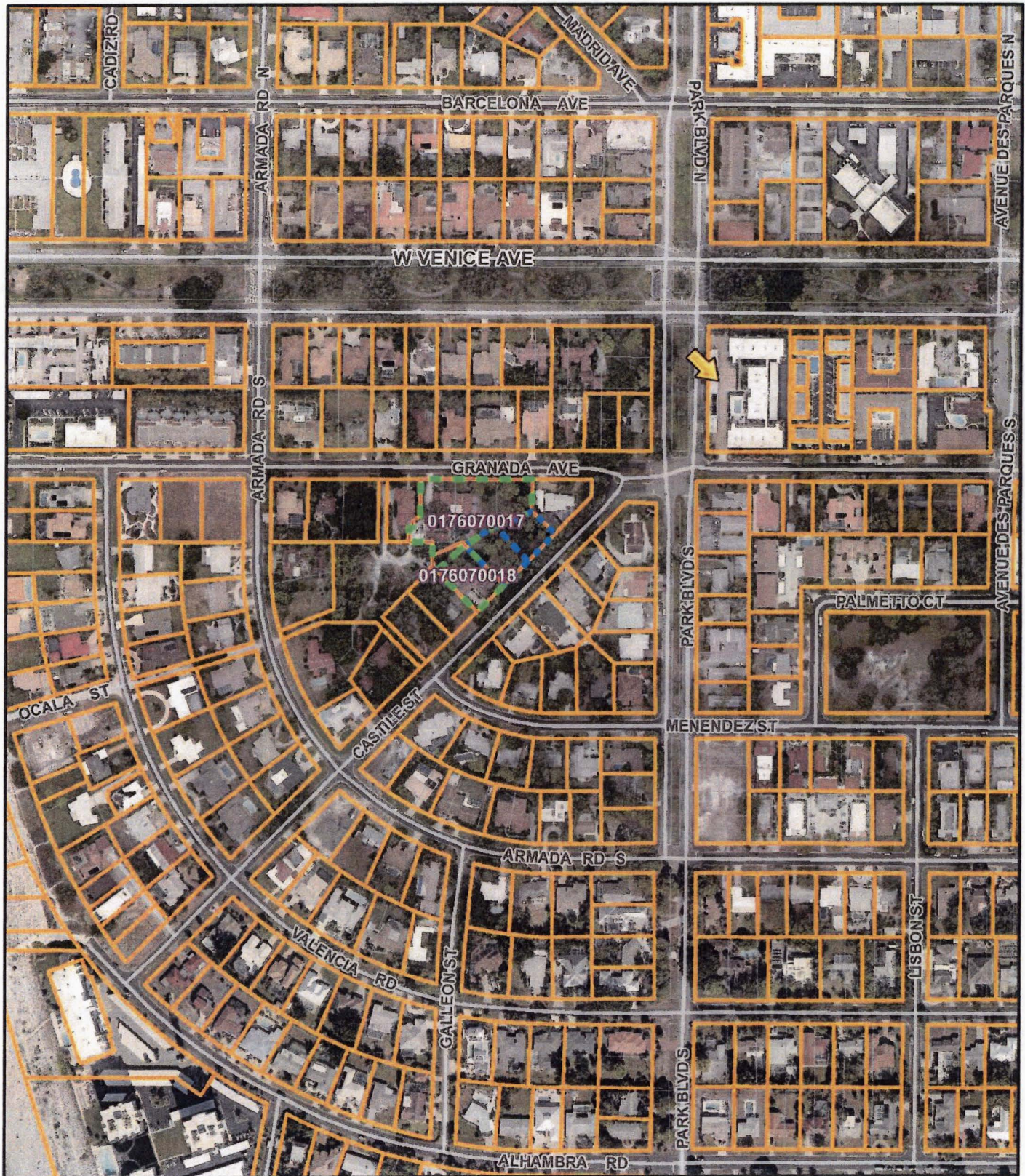










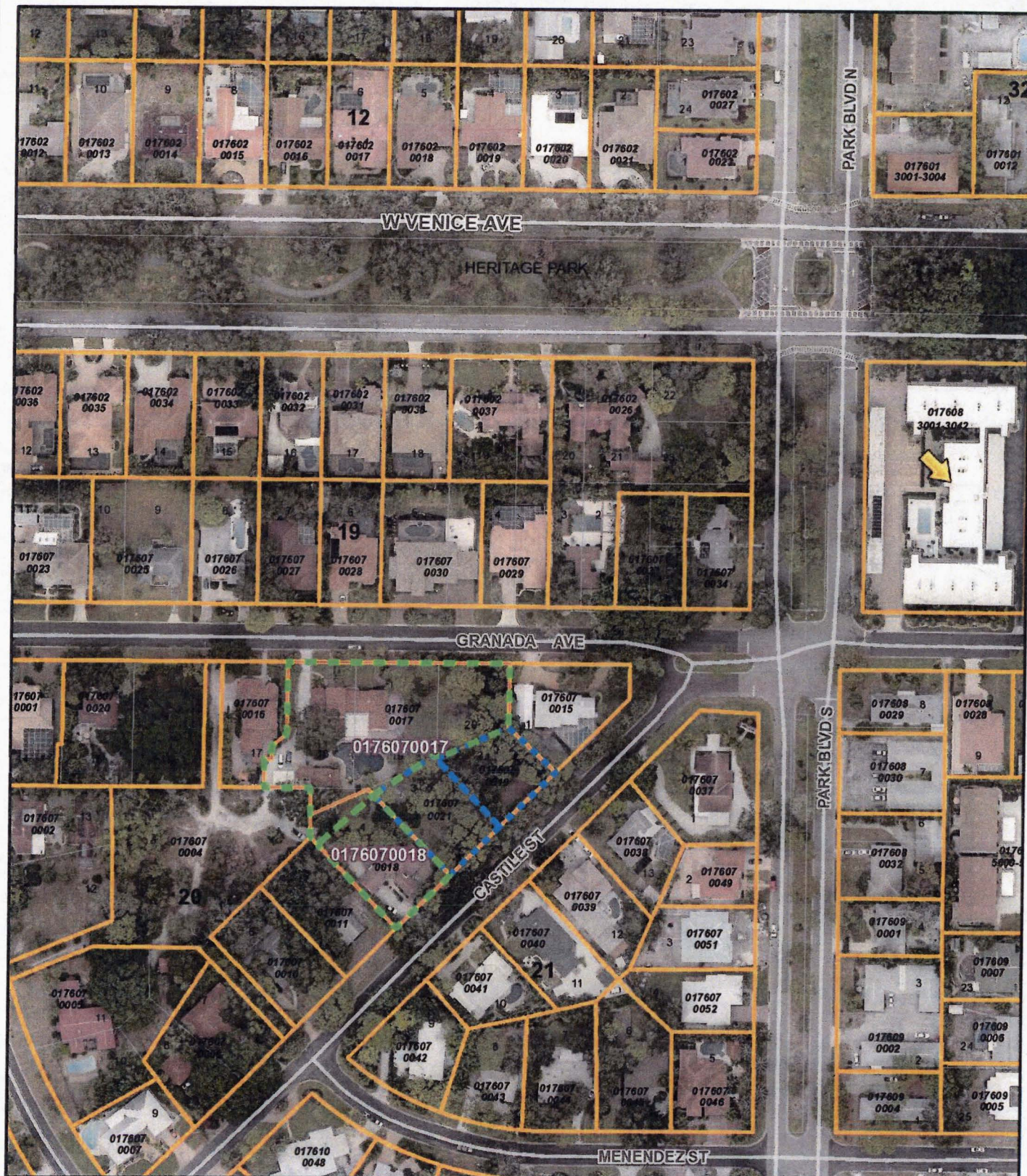


**Bill Furst**  
**SARASOTA COUNTY**  
**PROPERTY APPRAISER**

0 0.045 0.09 Miles

*This map is a product of the Sarasota County Property Appraiser's Office.  
 No warranties are expressed or implied.*



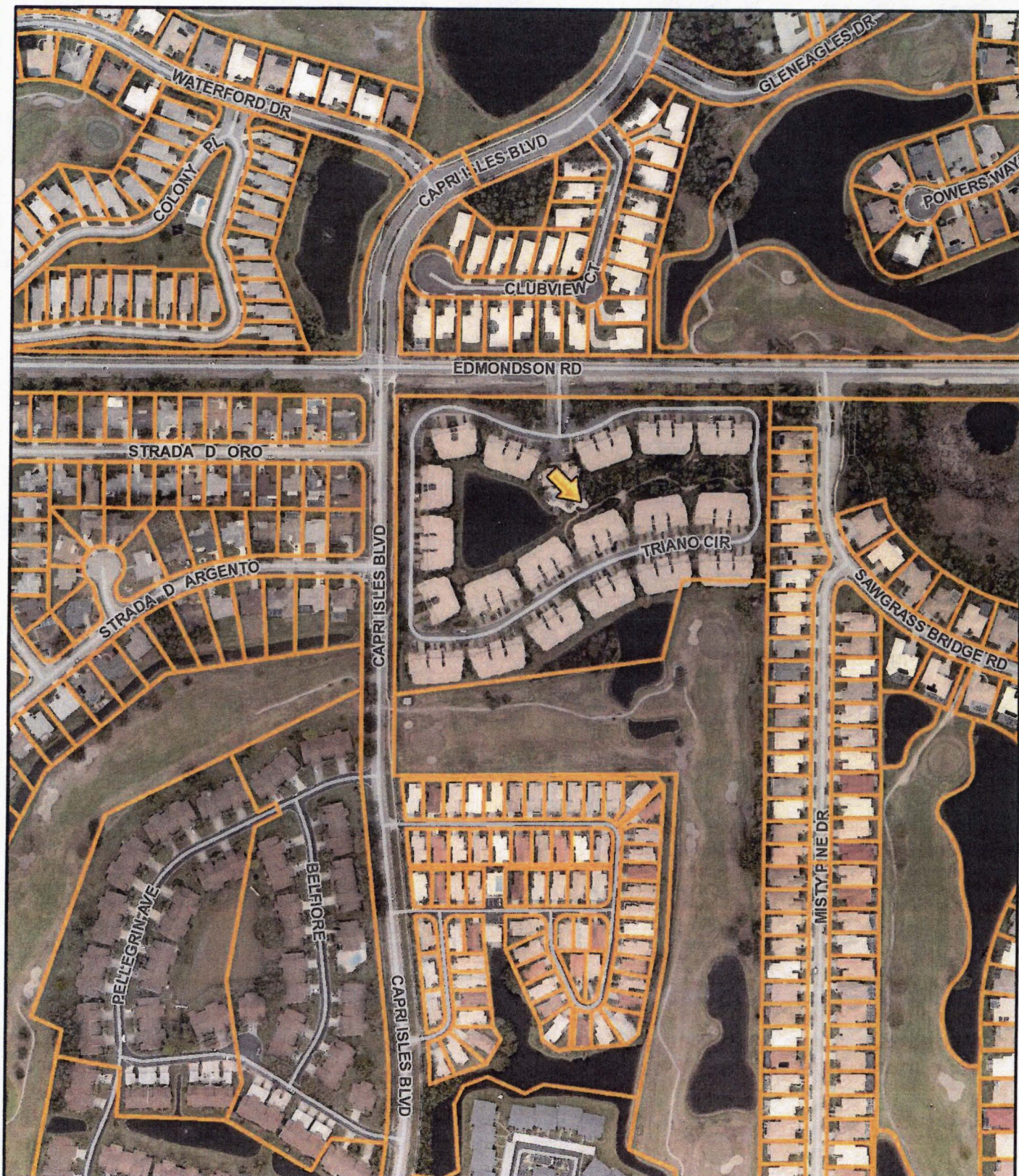


**Bill Furst**  
**SARASOTA COUNTY**  
**PROPERTY APPRAISER**

0 0.02 0.04 Miles

*This map is a product of the Sarasota County Property Appraiser's Office.  
 No warranties are expressed or implied.*



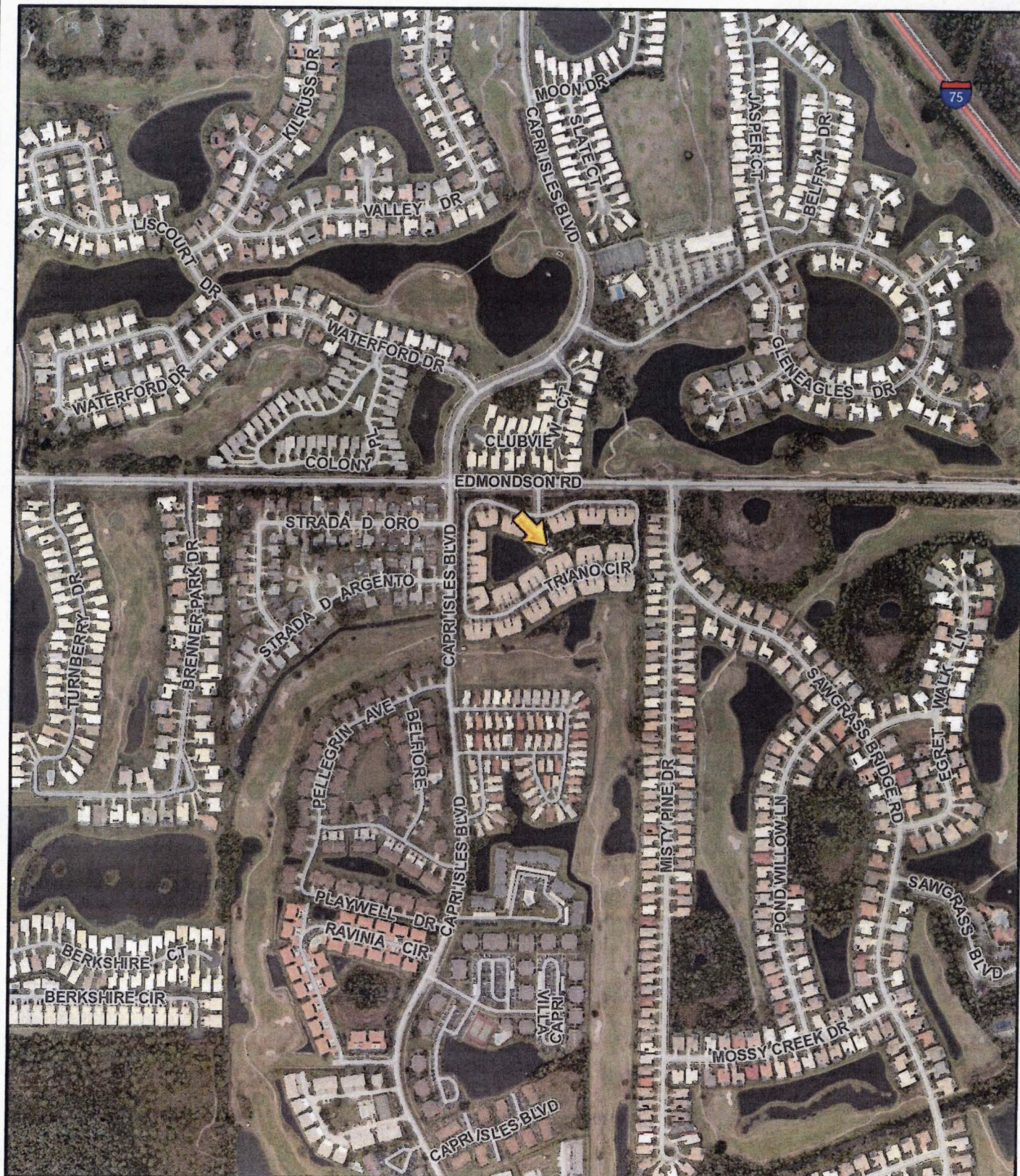


**Bill Furst**  
**SARASOTA COUNTY**  
**PROPERTY APPRAISER**

0 0.045 0.09 Miles

*This map is a product of the Sarasota County Property Appraiser's Office.  
 No warranties are expressed or implied.*





**Bill Furst**  
**SARASOTA COUNTY**  
**PROPERTY APPRAISER**

0 0.09 0.18 Miles

*This map is a product of the Sarasota County Property Appraiser's Office.  
 No warranties are expressed or implied.*





LAW OFFICES  
BOONE, BOONE, BOONE & KODA, P.A.

P. O. BOX 1596  
VENICE, FLORIDA 34284

ESTABLISHED 1956

E.G. (DAN) BOONE  
JEFFERY A. BOONE  
STEPHEN K. BOONE  
JOHN S. KODA  
JACKSON R. BOONE  
STUART S. BOONE

JAMES T. COLLINS, LAND PLANNER  
(NOT A MEMBER OF THE FLORIDA BAR)

STREET ADDRESS:  
1001 AVENIDA DEL CIRCO 34285  
TELEPHONE (941) 488-6716  
FAX (941) 488-7079  
e-mail: adm@boone-law.com

May 8, 2018

John Holic, Mayor  
All Members of the Venice City Council  
401 West Venice Avenue  
Venice, Florida 34285

Re: Certificate of Need to Construct a New Nursing Home

Dear Mayor Holic and City Council Members:

I am a member of the Florida Bar and have been practicing Health Care Law, including Certificate of Needs, since 1983.

Pursuant to Chapter 408.036 Florida Statutes, a Certificate of Need must first be applied for and obtained from the State of Florida, agency for health care administration, before constructing a new nursing home. Before the agency for healthcare administration will issue a Certificate of Need for a new nursing home or additional nursing home beds, there must be a need shown pursuant to the formula contained in the Florida Administrative Code identifying a need for additional nursing home beds in the County.

The health planning experts that I work with tell me that it is very unlikely that a need will be shown anywhere in the State of Florida for enough nursing home beds to construct a new nursing home for a very long time.

Kind regards,

Very truly yours,

Stephen K. Boone

SKB