

ORDINANCE NO. 2018-02

AN ORDINANCE OF THE CITY OF VENICE, FLORIDA, AMENDING THE 2010 CITY OF VENICE COMPREHENSIVE PLAN, LAND USE AND DEVELOPMENT CHAPTER, FUTURE LAND USE AND DESIGN ELEMENT, TO AMEND MAP FLUM-1, CITY OF VENICE 2030 FUTURE LAND USE MAP TO CHANGE THE FUTURE LAND USE MAP DESIGNATION OF PROPERTY LOCATED ON ALBEE FARM ROAD (PARCEL IDENTIFICATION NOS. 0404-05-0002 AND 0404-12-0002) FROM SARASOTA COUNTY LOW DENSITY RESIDENTIAL TO CITY OF VENICE MEDIUM DENSITY RESIDENTIAL; PROVIDING FOR CONFLICT WITH OTHER ORDINANCES; PROVIDING FOR A SEVERABILITY CLAUSE; AND PROVIDING AN EFFECTIVE DATE

WHEREAS, the Community Planning Act, Sections 163.3161 through 163.32466, Florida Statutes, ("Act") authorizes and requires the City of Venice to adopt and amend a comprehensive plan in accordance with the Act; and

WHEREAS, pursuant to the Act, Chapter 86 of the city code of ordinances designates the City of Venice Planning Commission as the local planning agency, responsible for the preparation of the comprehensive plan and amendments and updates thereto; and

WHEREAS, the city has received a comprehensive plan amendment application to change the future land use map designation of property located on Albee Farm Road (Parcel Identification Nos. 0404-05-0002 and 0404-12-0002) from Sarasota County Low Density Residential to City of Venice Medium Density Residential; and

WHEREAS, the city provided due public notice of the planning commission public hearing, which was conducted in a manner affording public participation to the fullest extent possible; and

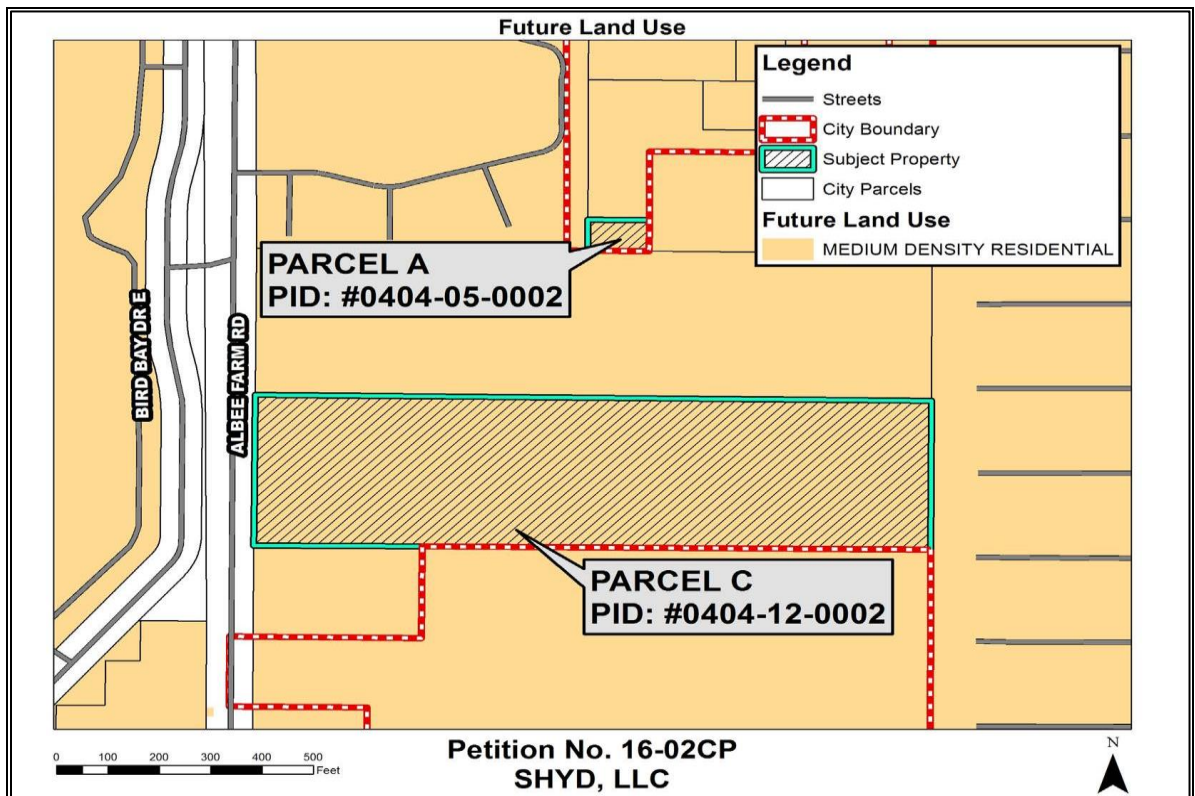
WHEREAS, the city Planning Commission held a public hearing on October 3, 2017, to review the comprehensive plan amendment, and provided its recommendation to the city council as the local governing body; and

WHEREAS, the Venice City Council, after due public notice, held public hearings on January 9, 2018 and January 23, 2018, to consider adoption of the comprehensive plan amendment as recommended by the planning commission.

NOW, THEREFORE, BE IT ORDAINED BY THE CITY COUNCIL OF THE CITY OF VENICE, FLORIDA, as follows:

SECTION 1. The whereas clauses above are ratified and confirmed as true and correct.

SECTION 2. The 2010 City of Venice Comprehensive Plan, Land Use & Development Chapter, Future Land Use & Design Element, Map FLUM-1, City of Venice 2030 Future Land Use Map is hereby amended to change the future land use map designation of property located on Albee Farm Road (Parcel Identification Nos. 0404-05-0002 and 0404-12-0002) from Sarasota County Low Density Residential to City of Venice Medium Density Residential as shown below:



SECTION 3. If any section, subsection, sentence, clause or provision of this ordinance is held invalid, the remainder of the ordinance shall not be affected.

SECTION 4. The effective date of this plan amendment, if the amendment is not timely challenged, shall be 31 days after adoption. If timely challenged, this amendment shall become effective on the date the state land planning agency or the Administration Commission enters a final order determining this adopted amendment to be in compliance. No development orders, development permits, or land uses dependent on this amendment may be issued or commence before it has become effective.

PASSED BY THE CITY COUNCIL OF THE CITY OF VENICE, FLORIDA THIS 23RD DAY OF JANUARY 2018.

First Reading: January 9, 2018
Second Reading: January 23, 2018

Adoption: January 23, 2018

John W. Holic, Mayor

ATTEST:

Lori Stelzer, MMC, City Clerk

I, Lori Stelzer, MMC, City Clerk of the City of Venice, Florida, a municipal corporation in Sarasota County, Florida, do hereby certify that the foregoing is a full and complete, true and correct copy of an Ordinance duly adopted by the City of Venice Council, a meeting thereof duly convened and held on the 23rd day of January 2018 a quorum being present.

WITNESS my hand and the official seal of said City this 23rd day of January 2018.

Lori Stelzer, MMC, City Clerk

Approved as to form:

David Persson, City Attorney