

HALL ARCHITECTS, PA
A43600923

513 FIFTH STREET, SARASOTA, FL 34236
941.917.0883 phone 941.917.0889 fax

SEAL

GREGORY HALL, AIA ARGO1290
ARCHITECT OF RECORD

GENERAL NOTES:

THESE DOCUMENTS ARE PRIMARILY CONCERNED WITH DESCRIBING THE PROJECT'S DESIGN INTENT. THE ARCHITECT IS THE PARTY RESPONSIBLE FOR ESTABLISHING AND MAINTAINING THE PROJECT'S DESIGN DIRECTION. FORWARD ANY QUESTIONS RELATED TO THESE MATTERS TO THE ARCHITECT WHENEVER THEY ARISE. THESE DOCUMENTS ARE NOT INTENDED TO DESCRIBE THE MEANS OR METHODS OF CONSTRUCTION. THOSE MATTERS REMAIN THE RESPONSIBILITY OF THE CONTRACTOR.

EXHAUSTIVE RECONNAISSANCE WAS NOT CONDUCTED AT THE PROJECT SITE PRIOR TO CONSTRUCTION; UNFORESEEN FIELD CONDITIONS MAY EXIST. THE CONTRACTOR IS RESPONSIBLE FOR NOTIFYING THE ARCHITECT OF ANY DISCREPANCIES BETWEEN THESE DOCUMENTS AND ACTUAL FIELD CONDITIONS BEFORE PROCEEDING WITH THE WORK.

DO NOT SCALE DIMENSIONS FROM THESE DRAWINGS. WHEN INFORMATION IS NOT CLEARLY PROVIDED, OBTAIN EXACT INFORMATION FROM THE ARCHITECT BEFORE PROCEEDING WITH THE WORK.

THE ARCHITECT IS NOT RESPONSIBLE FOR CONSTRUCTION THAT IS NOT CARRIED OUT IN ACCORDANCE WITH THESE CONSTRUCTION DOCUMENTS. THE ARCHITECT IS NOT RESPONSIBLE FOR DECISIONS AND INTERPRETATIONS MADE BY THE CONTRACTOR, OWNER OR OTHER PARTIES. DRAWINGS ARE BASED ON INFORMATION PROVIDED BY THE OWNER AS OF 4/3/2017. THESE DRAWINGS DO NOT REFLECT NOR IS THE ARCHITECT/ ENGINEER RESPONSIBLE FOR ANY CHANGES IN EQUIPMENT OR DESIGN DIRECTION OCCURRING AFTER THIS DATE.

© COPYRIGHT 2017 HALL ARCHITECTS, P.A.
DRAWINGS AND CONCEPTS MAY NOT BE USED OR REPRODUCED WITHOUT THE WRITTEN PERMISSION

DESIGN BUILDER:

**WILLIS A SMITH
CONSTRUCTION, INC.**
CGC034192

5001 N. LAKEWOOD RANCH BLVD
SARASOTA, FLORIDA 34240

telephone 941.366.3116
fax 941.954.5509

MEP ENGINEER:

**ADVANCED SYSTEMS
ENGINEERING INC.**

13655 AUTOMOBILE BOULEVARD, SUITE 330
CLEARWATER, FL 33782

telephone 727.540.9396
fax 727.540.9376

STRUCTURAL ENGINEER:

**STIRLING & WILBUR
ENGINEERING GROUP INC.**

7085 SOUTH TAMiami TRAIL
SARASOTA, FL 342341

telephone 941.377.9179
fax 941.378.3786

Date 8/25/2016	ISSUE:
Date 7/13/2017	ISSUE: REVIEW

PROJECT NAME:
PGT - Connector Building

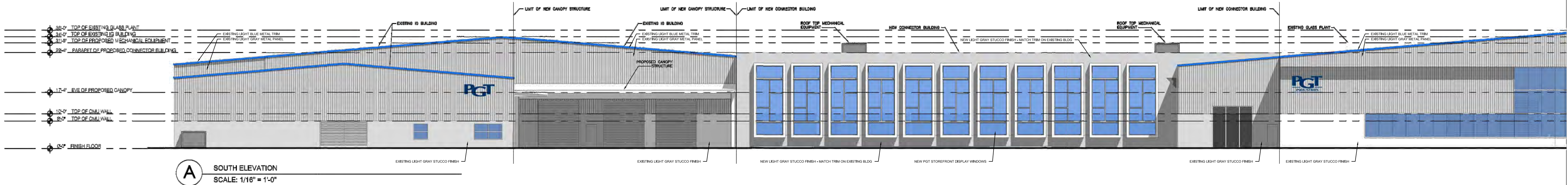
SHEET TITLE

ELEVATIONS

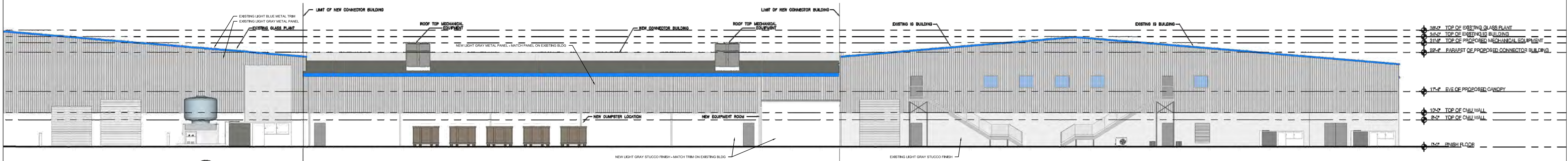
SCALE: 1/16" = 1'

SHEET NUMBER

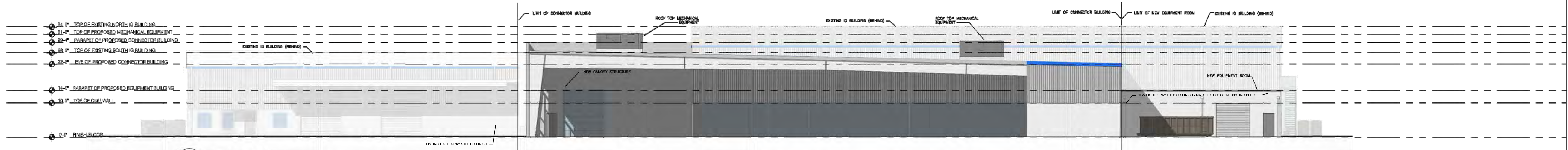
A3.00



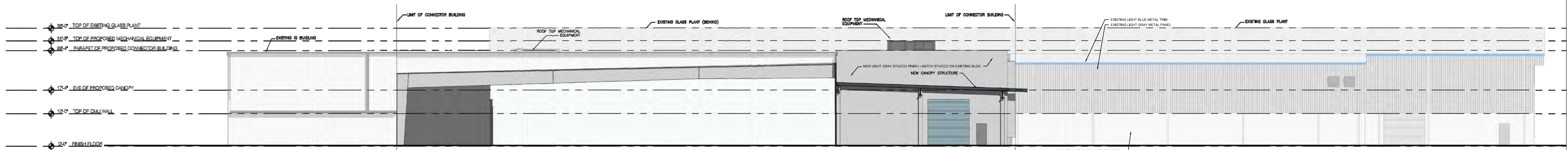
A SOUTH ELEVATION
SCALE: 1/16" = 1'-0"



B NORTH ELEVATION
SCALE: 1/16" = 1'-0"



C EAST ELEVATION
SCALE: 1/16" = 1'-0"



D WEST ELEVATION
SCALE: 1/16" = 1'-0"