



CITY OF VENICE
FLORIDA
401 W. Venice Avenue • Venice, Florida 34285

Edward F. Lavallee
City Manager


Office: (941) 486-2626 Ext 24006 • Fax: (941) 480-3031

Email: elavallee@venicegov.com
www.venicegov.com

Interoffice Memorandum

City Manager's Office

TO: Linda Andrews, Chair, and Members of the Parks and Recreation Advisory Board

FROM: Edward F. Lavallee, City Manager 

RE: Venice Public Safety Facility

DATE: January 31, 2017

In the November 2016 general election, a voter referendum approved the design and construction of a new Venice public safety facility. Subsequently, staff and City Council have been reviewing possible sites for the new facility. Among the sites recently discussed are two specific locations in Wellfield Park. One site is a 28-acre parcel at the north end of the Park, bordered on the north by Water Street and on the south by Curry Creek. The second parcel approximates 11 acres and is located at the southern end of Wellfield Park, proximate to Ridgewood Road. The purpose of this correspondence is to briefly describe the planned public safety facility project with specific reference to these two public property sites.

The north Wellfield Park site has the following relevant conditions and characteristics:

- Located on public property within a park; therefore, no site acquisition cost is necessary
- Currently zoned GU (government use) meaning that re-zoning would not be necessary to construct a public safety facility
- Planned for development of approximately 10 acres within the 28-acre segment
- Currently the property is relatively flat, wooded, and bordered on the west by Pinebrook Road and on the east by the Capri Isles golf course
- The site is accessible from the west via Pinebrook Road

The south Wellfield Park site has the following relevant conditions and characteristics:

- Located on public property, within a park therefore, no site acquisition cost is necessary

- Currently zoned GU (government use) meaning that re-zoning would not be necessary to construct a public safety facility
- Planned development of approximately 10 acres along the border of Ridgewood Road; bordered on the west by Pinebrook Road and on the east bordered by the current police facility
- Currently, this site is flat and groomed for sports and contains two baseball/softball fields; both of which would be removed as part of the overall site development

Development of either of these two public property sites has implications for the following strategic issues:

Master Parks Plan: The City Code (46-1) specifies that *permanent* changes in use from the Master Parks Plan require:

- Proposed changes certified by the City Council, then sent to the Planning Commission and Parks and Recreation Board for review and recommendation back to the Council
- City Council to hold a Public Hearing on the proposed changes
- The changes approved by Ordinance
- Permanent changes subject to a public referendum

The City contracted with the Toole Design Group to create an updated draft of the Master Parks Plan. That consultant's recommended plan was received and certified by the Venice City Council on January 24, 2017, and forwarded to the Parks and Recreation Advisory Board and the Planning Commission for review. At the same City Council meeting, Council directed staff to examine public sites and develop a report on the details of constructing a new public safety facility. Review of available publicly-owned sites focused on two locations: the north end of Wellfield Park and the south end of Wellfield Park. Based on dialogue at the January 24th Council meeting, staff efforts have concentrated on the south-end site. Details of the south-end site will be included in a report to the City Council. That report is scheduled for presentation to the City Council at the February 14th Council Meeting. *(This project is not included in the Toole Design Group recommended Master Parks Plan update).*

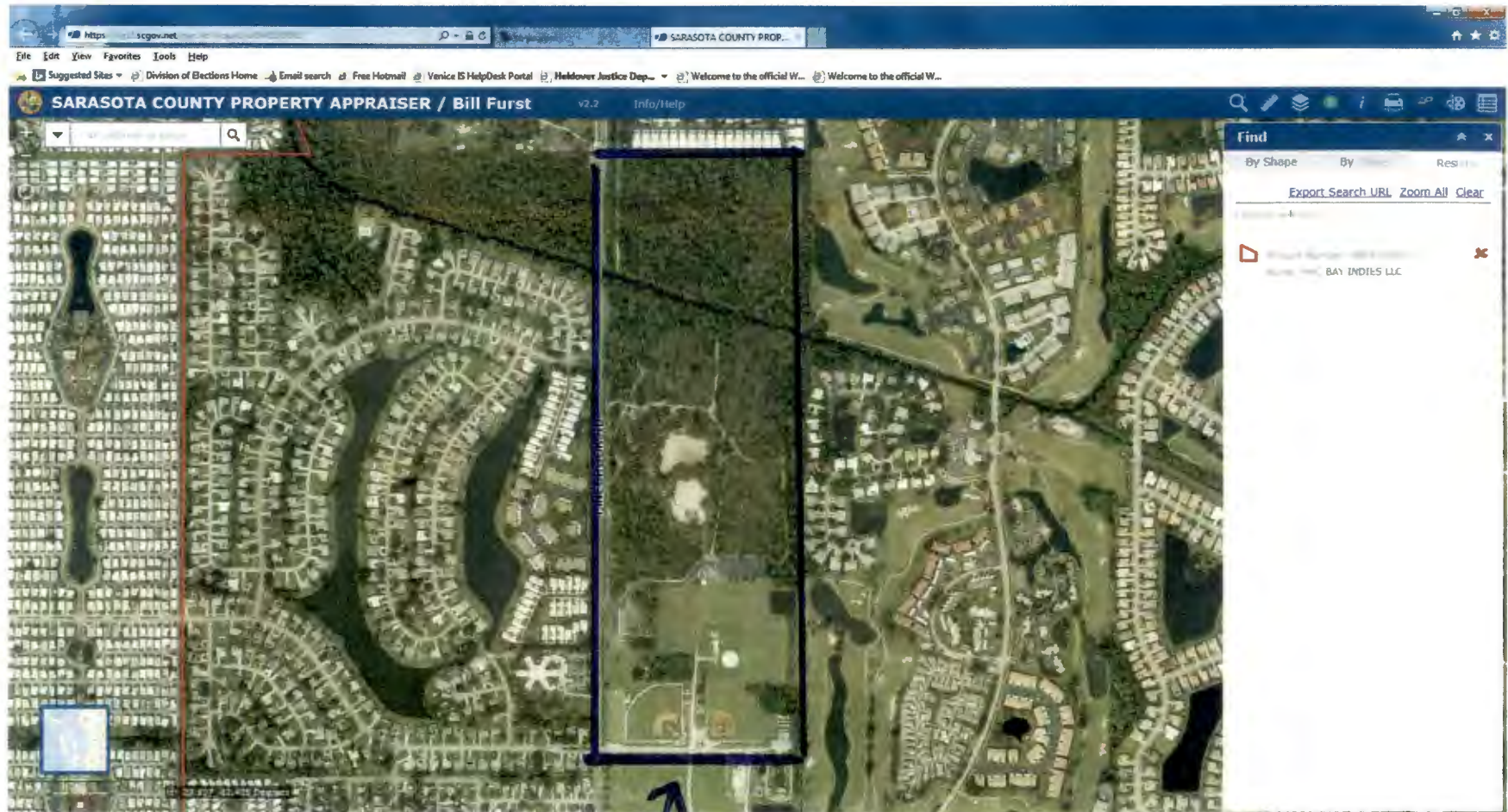
Pending Council approval for the design and construction of a public safety facility and relocation of the Police Department from its current site to a new location in Wellfield Park, the process to certify the City's Master Parks Plan will be updated to include a permanent change in use of Wellfield Park to incorporate the public safety facility. Attached are drawings to illustrate the location of the proposed project site.

The planned new police facility prospectively includes the addition of a simulated indoor firearms training component. This training tool is an alternative, in part, to the use of a conventional outdoor firearms training range. Use of this training tool and conventional firearms qualification

at another area firearms range will eliminate the need for the current police training range at Wellfield Park. Additionally, the Fire Department is eliminating use of the fire training site at Wellfield. Removal of these two activities will free up more than five acres of park space for other uses. The availability of these sites will help offset the loss of park space from the planned public safety facility.

EFL/jg

Attachments



Wellfield Park





Legend

- City Limits
- Enclaves
- Major-Secondary Roads



• Site B

10-12 +/-
acres

10" Asbestos Cement

PINEBROOK RD

12" Polyvinyl Chloride

4" Polyvinyl Chloride

WELLFIELD RD

4" Polyvinyl Chloride

WELLFIELD RD