



Parks Master Plan

July 18, 2016



Presentation Outline



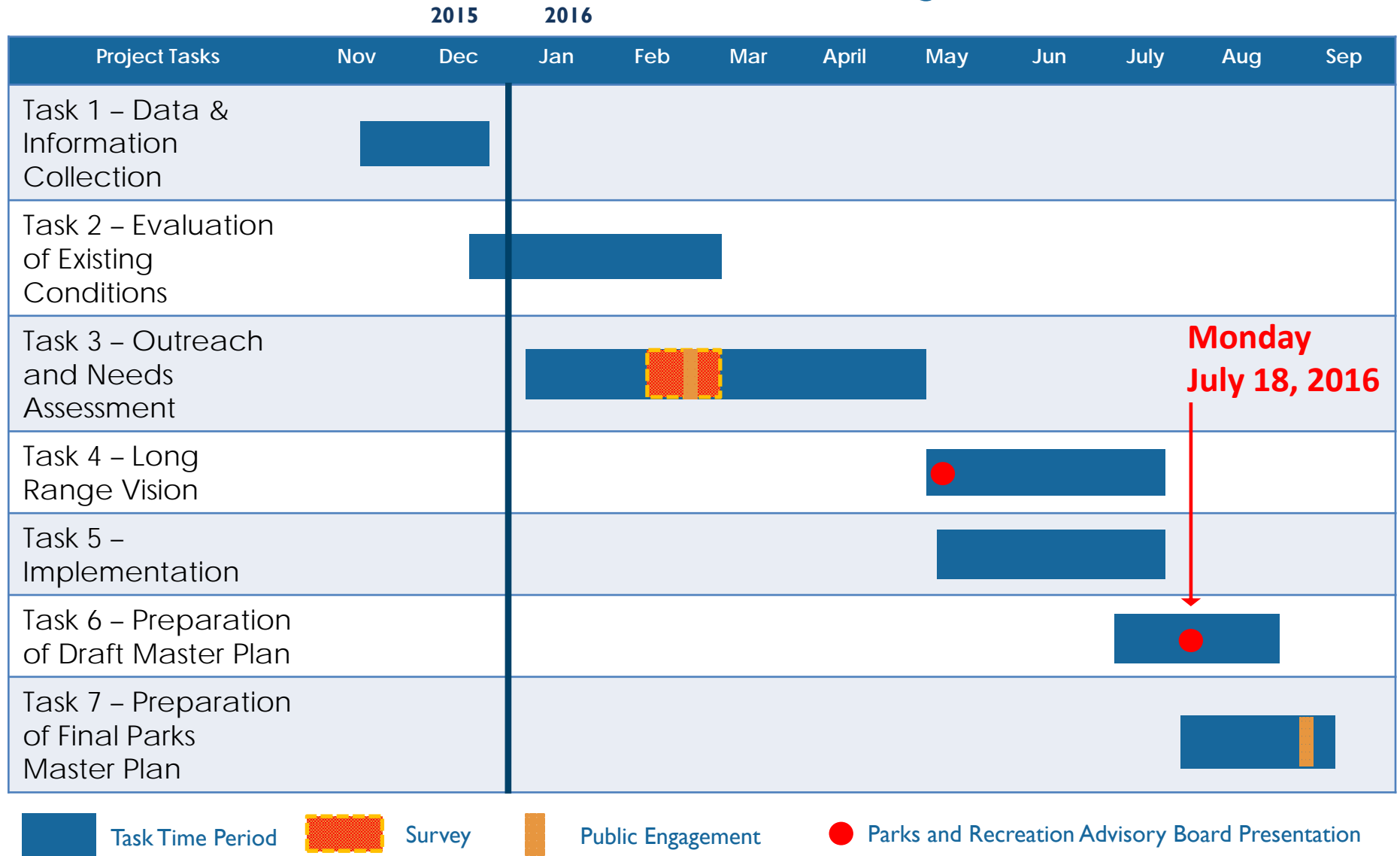
- Review of Existing Conditions + Needs Assessment Findings
- Review of Long Range Vision
- Review of Implementation Strategy
- Discussion

Purpose of Parks Master Plan

- Prepare a Master Plan for development of the City Parks System as required by City Code Section 46-3.
- Provide an assessment of the current and future needs of the parks system, its facilities, programs and maintenance over the course of the next twenty years.



Project Schedule



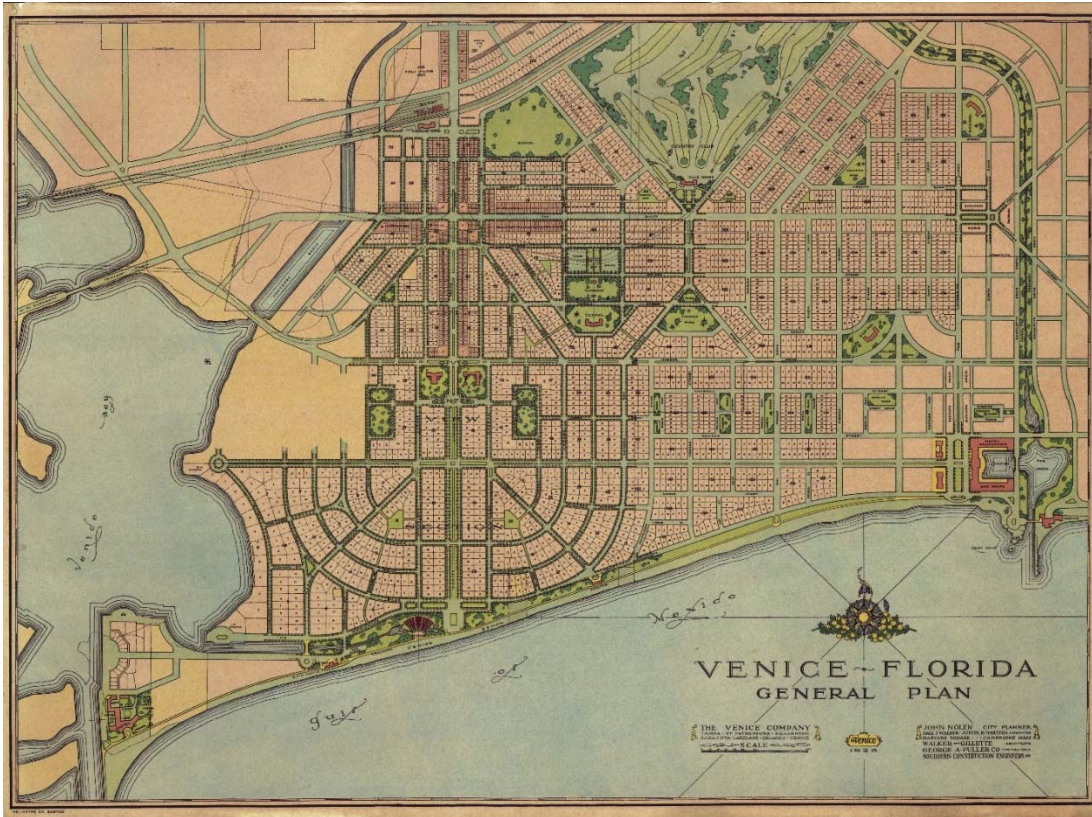
Existing Conditions Analysis, Needs + Priorities Assessment



Summary of Needs + Priorities Assessment

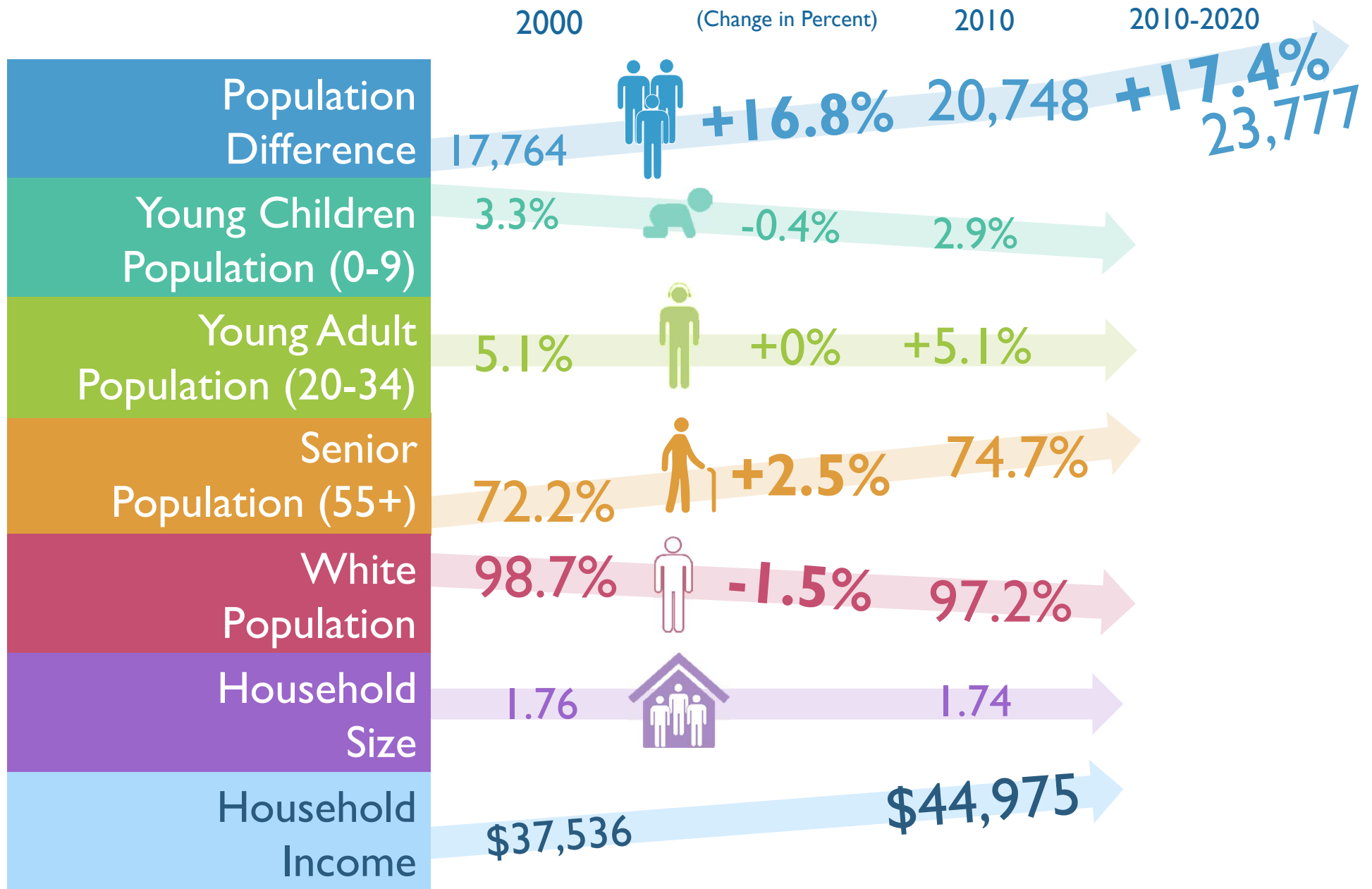
	Needs Assessment Techniques					
	Online Survey	Statistically Valid Survey	Community Input Meetings	Stakeholder Interviews	LOS Analysis	Site Evaluations
ACTIONS						
Improvements/maintenance of existing beach access parks	●	●	●	●		●
Improvements/maintenance of existing parks, pools, and recreation facilities	●		●	●		●
Purchase additional park land	●		●	●	●	
Develop new walking/biking trails and connect existing trails	●	●		●	●	
Improvements/maintenance of existing walking/biking trails			●	●		●
Development of new recreation facilities (i.e. courts, fields, playgrounds, etc)	●				●	
FACILITIES						
Paved walking and biking trails	●	●		●	●	
Natural areas and wildlife habitat	●	●	●		●	
Nature, hiking trails	●	●				
Small neighborhood parks	●				●	
Off leash dog park	●		●			
Outdoor pickleball courts	●		●			
Outdoor swimming pools/water parks	●				●	
Outdoor basketball courts	●				●	
Canoe/Kayak launch	●					
PROGRAMS						
Beach Recreation	●	●				
Adult fitness and wellness programs	●		●			
Nature programs	●		●			
Water Fitness Programs	●	●				
Senior adult programs	●					
Adult arts and crafts programs	●					
Special Events	●					
Fishing Programs	●					

John Nolen Plan



“Venice is the first city built to demonstrate what Florida can do to produce a community that is at once a fine resort of great charm and refreshment and a city serving all the every-day needs of a well – conceived, well-designed a soundly construction municipality. The result is an inspiration to those who would make this a word a better place to live in.” John Nolen

Changing Demographics

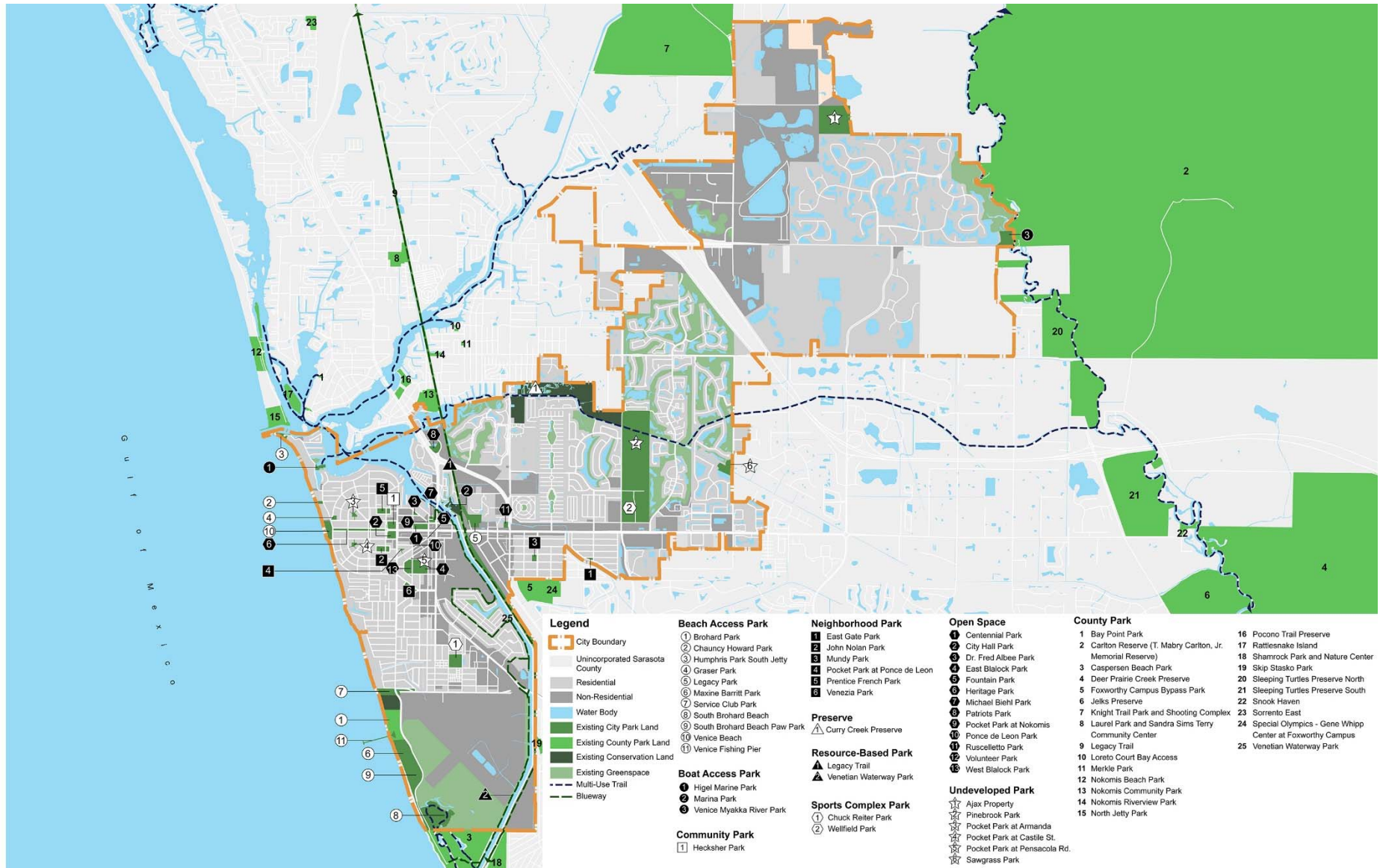


Existing Park System

- Beach Access Parks
- Boat Access Park
- Community Park
- Neighborhood Park
- Preserve
- Resource-Based Park
- Spots Complex Park
- Urban Open Space
- *Private Recreation Facilities*



Existing Park System



Park Site Evaluation

Criteria

Proximity, Access and Linkages

Comfort and Image

Uses, Activities, and Sociability

Environmental Sustainability

Buildings and Architecture

Scoring:

1.0 – 2.9 = Not Meeting Expectations

3.0 – 3.9 = Meeting Expectations

4.0 – 4.9 = Exceeding Expectations

5.0 = Far Exceeding Expectations



Venezia Park

Park Site Evaluation

	Brohard Park	Centennial Park	Chuck Reiter Park	Hecksher Park	Heritage Park	Higel Marine Park	Legacy Trail	Marina Park	Maxine Barritt Park	Service Club Park	Venice Community Center	Venice Myakka River Park	Venetian Waterway Park	Venezia Park	Total
Proximity/ Access/ Linkages (Max 5.0)	3.5	3.8	3.0	3.4	3.8	2.3	3.0	4.2	3.3	2.0	4.0	2.0	2.7	3.0	3.1
Visibility from a distance	3	5	5	4	5	3	3	4	3	2	4	1	3	5	3.6
Ease in walking to the park	2	5	3	4	5	1	2	5	3	2	4	1	3	4	3.1
Transit Access	5	-	1	-	-	1	4	5	3	1	4	1	2	2	2.6
Clarity of information/ signage	3	3	3	3	4	3	3	3	3	3	3	4	2	2	3.0
ADA Compliance	4	3	4	3	3	3	4	4	4	2	5	2	3	3	3.4
Lighting	4	3	2	3	2	3	2	4	4	2	4	3	3	2	2.9
Comfort and Image (Max 5.0)	3.8	3.8	3.5	3.0	3.5	3.7	3.3	3.2	3.7	3.2	4.5	3.5	3.3	2.0	3.4
First Impression/overall attractiveness	4	4	4	2	4	3	4	2	4	3	5	4	4	2	3.5
Feeling of safety	5	4	4	4	4	4	4	4	5	3	5	2	3	3	3.9
Cleanliness/overall quality of maintenance (Exterior)	4	4	4	3	4	4	4	4	4	3	5	4	4	2	3.8
Cleanliness/overall quality of maintenance (Interior)	-	-	-	-	-	-	-	-	-	-	5	-	-	-	5.0
Comfort of places to sit	4	4	3	4	4	3	2	3	3	4	4	4	3	2	3.4
Protection from bad weather	3	3	2	3	1	4	2	2	2	3	4	3	2	1	2.5
Evidence of management/stewardship (Exterior Site)	3	4	4	2	4	4	4	4	4	3	5	4	4	2	3.6
Evidence of management/stewardship (Interior)	-	-	-	-	-	-	-	-	-	-	5	-	-	-	5.0
Ability to Easily Supervise and Manage the Park or Facility (Interior)	-	-	-	-	-	-	-	-	-	-	4	-	-	-	-
Condition and Effectiveness of any Equipment or Operating Systems	-	-	-	-	-	-	-	-	-	-	3	-	-	-	3.0
Uses and Activities and Sociability (Max 5.0)	4.2	2.8	3.0	3.0	3.0	2.3	3.3	2.5	3.8	2.8	3.7	2.8	3.3	2.5	3.1
Mix of uses/things to do	4	2	2	3	2	2	3	2	3	2	3	3	3	2	2.6
Level of Activity	5	3	4	5	4	2	4	2	5	4	3	3	4	2	3.6
Sense of pride/ownership	4	4	4	4	4	3	4	3	5	3	4	4	4	3	3.8
Programming Flexibility	4	2	2	2	2	2	2	2	4	2	4	2	2	3	2.5
Ability of Facility to Effectively Support Organized Programming	4	4	4	2	4	3	4	4	4	4	4	3	4	3	3.6
Marketing or Promotional efforts for the Facility or Activities	4	2	2	2	2	2	3	2	2	2	4	2	3	2	2.4
Environmental Sustainability	4.5	3.5	2.5	3.5	3.5	2.0	3.5	4.0	3.0	2.5	4.0	2.0	3.5	2.5	3.2
Stormwater Management	4	3	3	3	3	2	3	3	4	3	4	3	3	2	3.1
Multi-modal Capacity	5	4	2	4	4	2	4	5	2	2	4	1	4	3	3.3
Co-Location/Integration of Infrastructure	-	-	-	-	-	-	-	-	-	-	-	-	-	-	-
Facility Energy Efficiency	-	-	-	-	-	-	-	-	-	-	4	-	-	-	4.0
Buildings/Architecture (Max 5.0)											4.4				4.4
Image and Aesthetics	-	-	-	-	-	-	-	-	-	-	5	-	-	-	-
Clarity of Entry and Connections to Park	-	-	-	-	-	-	-	-	-	-	4	-	-	-	-
Interior Layout	-	-	-	-	-	-	-	-	-	-	3	-	-	-	-
Interior Finishes and Furniture and Equipment	-	-	-	-	-	-	-	-	-	-	4	-	-	-	-
Functioning Dimensions of Space	-	-	-	-	-	-	-	-	-	-	5	-	-	-	-
Structural Integrity	-	-	-	-	-	-	-	-	-	-	5	-	-	-	-
Building Enclosure	-	-	-	-	-	-	-	-	-	-	4	-	-	-	-
Building Systems	-	-	-	-	-	-	-	-	-	-	5	-	-	-	-
Code Compliance	-	-	-	-	-	-	-	-	-	-	5	-	-	-	-
Energy and Sustainability	-	-	-	-	-	-	-	-	-	-	4	-	-	-	-
Average Score Without Building/Architecture (Max 5)	4.0	3.5	3.0	3.2	3.5	2.6	3.3	3.5	3.5	2.6	4.0	2.6	3.2	2.5	
Average Score with/for Building/Architecture (Max 5)											4.1				

**Overall
Average**

3.3

Park Site Evaluation



Park Site Evaluation



Park Site Evaluation



Legacy Park



Centennial Park

Level of Service Analysis - Acreage

			2015 (22,325)		2020 (23,777)		2025 (25,170)		2030 (27,020)	
Park Acreage Calculation	Acreage	Venice Comprehensive Plan Acreage LOS Target (x 1,000 population)	2015 Acres per 1,000 population (Acres per 1,000 population)		2020 Acres per 1,000 population (Acres per 1,000 population)		2025 Acres per 1,000 population (Acres per 1,000 population)		2030 Acres per 1,000 population (Acres per 1,000 population)	
			2015 Target Acreage	Acreage Need /Surplus	2020 Target Acreage	Acreage Need /Surplus	2025 Target Acreage	Acreage Need /Surplus	2030 Target Acreage	Acreage Need /Surplus
Total Park Acreage	491.94	7.00	22.0	156.28 336	20.7	166.4 326	19.5	176.1 316	18.2	189.1 303
Community Park, Neighborhood Park, Urban Open Space, Sports Complex, Undeveloped Park Land	237.84	-	10.7	- -	10.0	- -	9.4	- -	8.8	- -
Beach Access Park, Boat Access Park, Preserve, Resource- Based Park	254.10	-	11.4	- -	10.7	- -	10.1	- -	9.4	- -

National Recreation and Parks Association PRORAGIS Acreage LOS

Park Acreage Calculation	National Acreage LOS Median for Agencies with Population Density's between 500 to 1,500 per Square Mile (Acres per 1,000 population)	City of Venice 2015 Acreage LOS (Acres per 1,000 population)	City of Venice 2020 Acreage LOS (Acres per 1,000 population)	City of Venice 2025 Acreage LOS (Acres per 1,000 population)	City of Venice 2030 Acreage LOS (Acres per 1,000 population)
Total Acreage	12.1	25.0	23.5	22.2	20.7
Community Park, Neighborhood Park, Urban Open Space, Sports Complex, Undeveloped Park Land		13.6	12.8	12.1	11.3
Beach Access Park, Boat Access Park, Preserve, Resource-Based Park		11.4	10.7	10.1	9.4

Indoor Recreation Center Square Footage Level of Service

			2015 (22,325)		2020 (23,777)		2025 (25,170)		2030 (27,020)	
			Industry Benchmark (Square Feet per Capita)	City of Venice Community Center Square Footage*	2015 Benchmark Target	Square Footage (Need)/Surplus	2020 Benchmark Target	Square Footage (Need)/Surplus	2025 Benchmark Target	Square Footage (Need)/Surplus
City of Venice Community Center Space			1.5	32,000	33,488	(1,488)	35,666	(3,666)	37,755	(5,755)
							40,530	(8,530)		

*Square footage based on aerial photograph area circulation

National Recreation and Parks Association PRORAGIS Facilities LOS Benchmarking

National Recreation Parks Association PRORAGIS Benchmark			2015	2020	2025	2030
	City of Venice Facilities	National Median Level of Service (1 per # residents)	2015 City of Venice Facilities Level of Service (1 per # residents)	2020 City of Venice Facilities Level of Service (1 per # residents)	2025 City of Venice Facilities Level of Service (1 per # residents)	2030 City of Venice Facilities Level of Service (1 per # residents)
Diamond Fields	10	3,333	2,233	2,378	2,517	2,702
Rectangle Fields	6	8,124	3,721	3,963	4,195	4,503
Playgrounds	8	3,899	2,791	2,792	3,146	3,378
Dog Parks	2	53,195	11,163	11,889	12,585	13,510
Tennis Courts	8	4,413	2,791	2,972	3,146	3,378
Basketball Courts	3	7,526	7,442	7,926	8,390	9,007
Indoor Recreation Center	0	24,804	-	-	-	-
Swimming Pools	0	33,660	-	-	-	-
Senior Center	1	50,000	22,325	23,777	25,170	27,020
Golf Course (pop. 9 holes)	1	26,288	22,325	23,777	25,170	27,020

Florida Statewide Comprehensive Outdoor Recreation Plan Facilities LOS Benchmarking

Outdoor Facility Type	Southwest Region LOS x/1,000 Participants	Number of City of Venice Facilities	2015		2020		2025		2030	
			Need-Based on Participants	(Need)/Surplus to meet Southwest Region	Need-Based on Participants	(Need)/Surplus to meet Southwest Region	Need-Based on Participants	(Need)/Surplus to meet Southwest Region	Need-Based on Participants	(Need)/Surplus to meet Southwest Region
Baseball Fields	0.85	10	2.09	7.91	2.22	7.78	2.35	7.65	2.53	7.47
Outdoor Basketball Courts	0.86	3	1.73	1.27	1.84	1.16	1.95	1.05	2.09	0.91
Football Fields	0.48	1	0.96	0.04	1.03	(0.03)	1.09	(0.09)	1.17	(0.17)
Tennis Courts	1.46	8	4.24	3.76	4.51	3.49	4.78	3.22	5.13	2.87
Soccer Fields	0.45	5	1.00	4.00	1.07	3.93	1.13	3.87	1.22	3.78
Outdoor Swimming Pools	0.09	0	0.56	(0.56)	0.60	(0.60)	0.63	(0.63)	0.68	(0.68)
Paved Trails (Miles)	0.24	22	2.41	19.59	2.57	19.43	2.72	19.28	2.92	19.08
Freshwater Boat Ramps (Lanes)	0.16	4	0.89	3.11	0.95	3.05	1.01	2.99	1.08	2.92

Access Level of Service

All Parks: 1/4 mile, 1/2 mile (Not including County Parks)

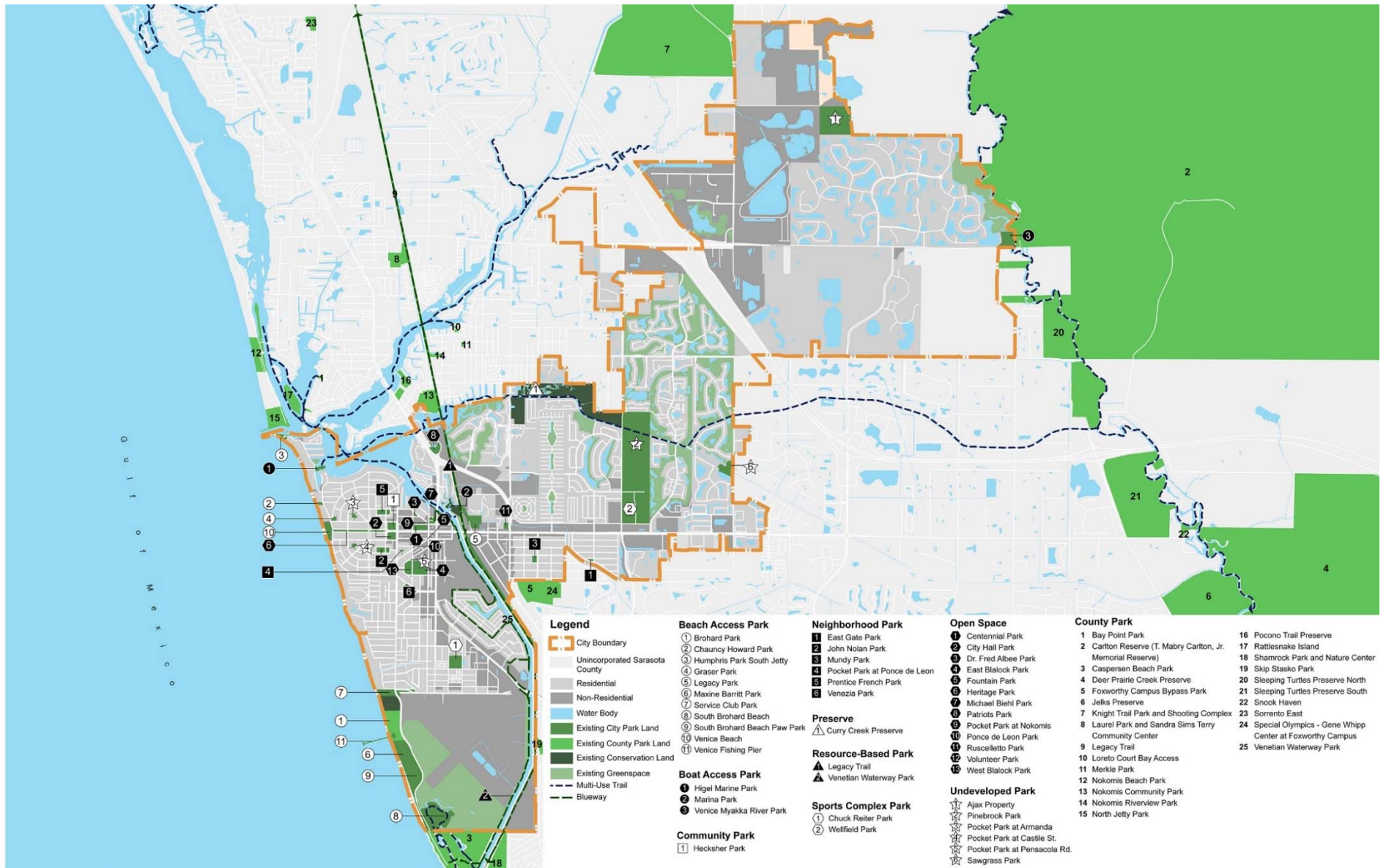
**Neighborhood Parks
and Community
Parks:** 1/4 mile, 1/2 mile, 1 mile

Multi-Use Trails: 1/4 mile buffer, 1/2 mile buffer

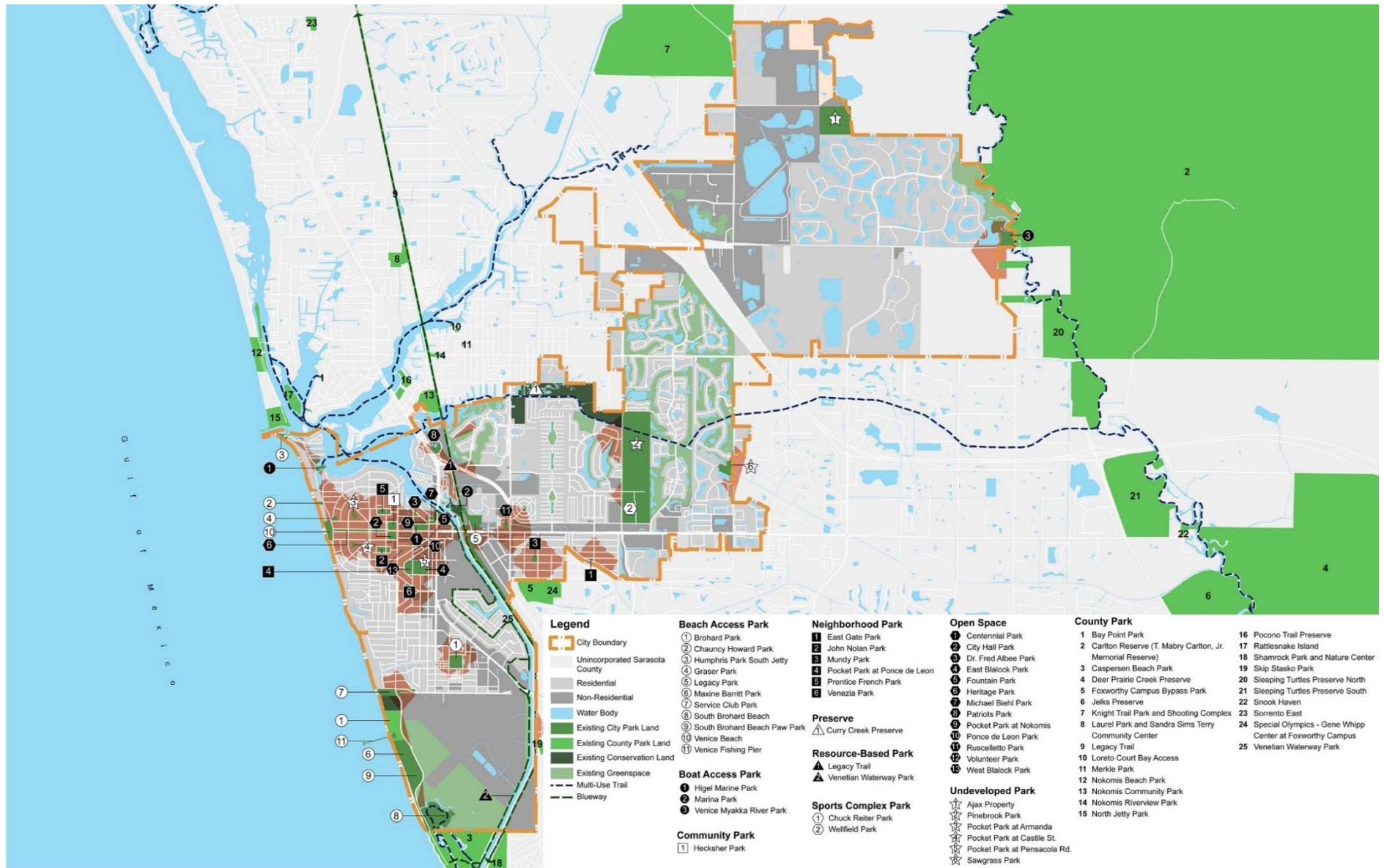
Natural Area Parks: 1 mile, 2 mile for the following Parks:

- Curry Creek Preserve
- Pinebrook Park
- Venice Myakka River Park
- Service Club Park

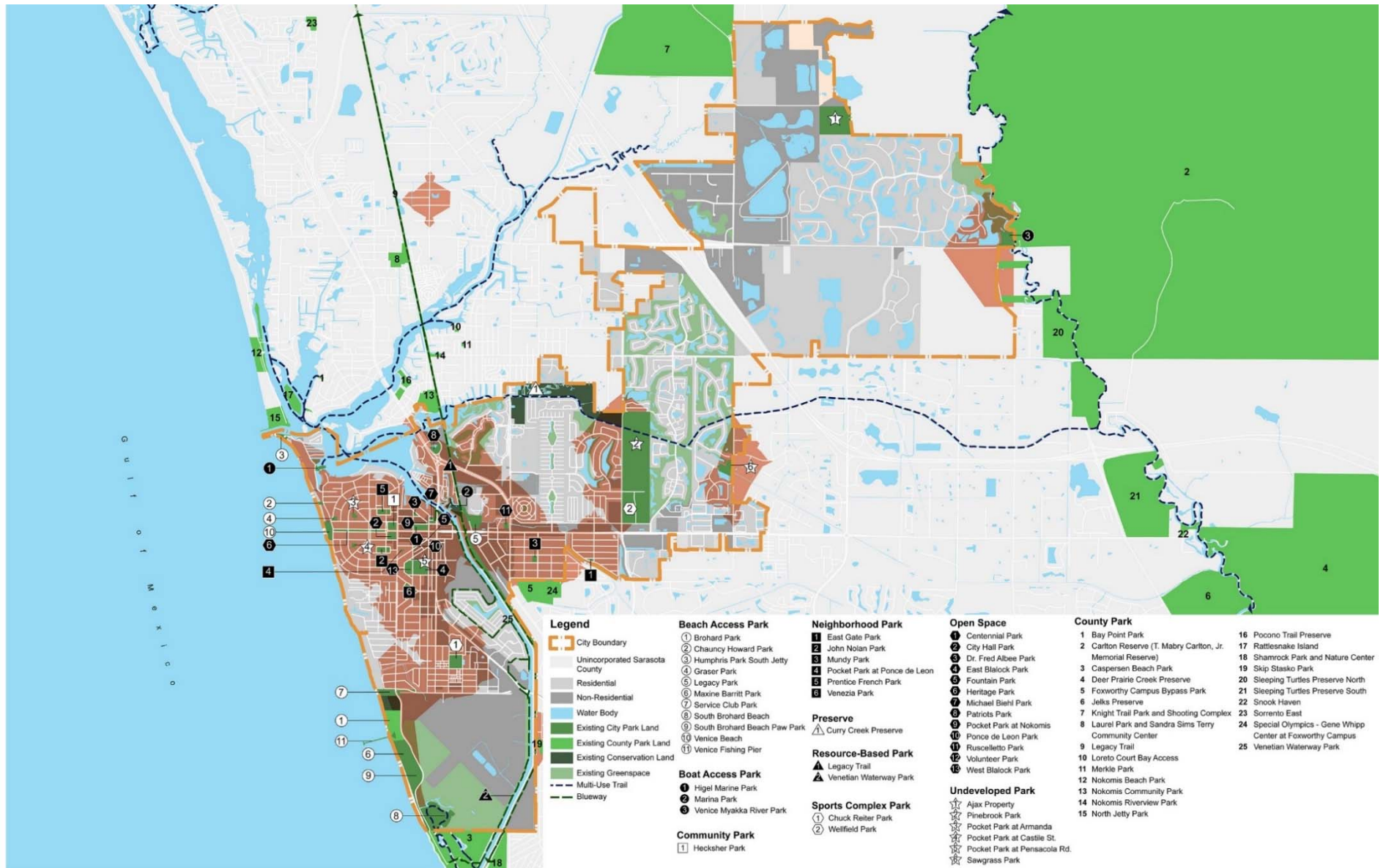
Access Level of Service



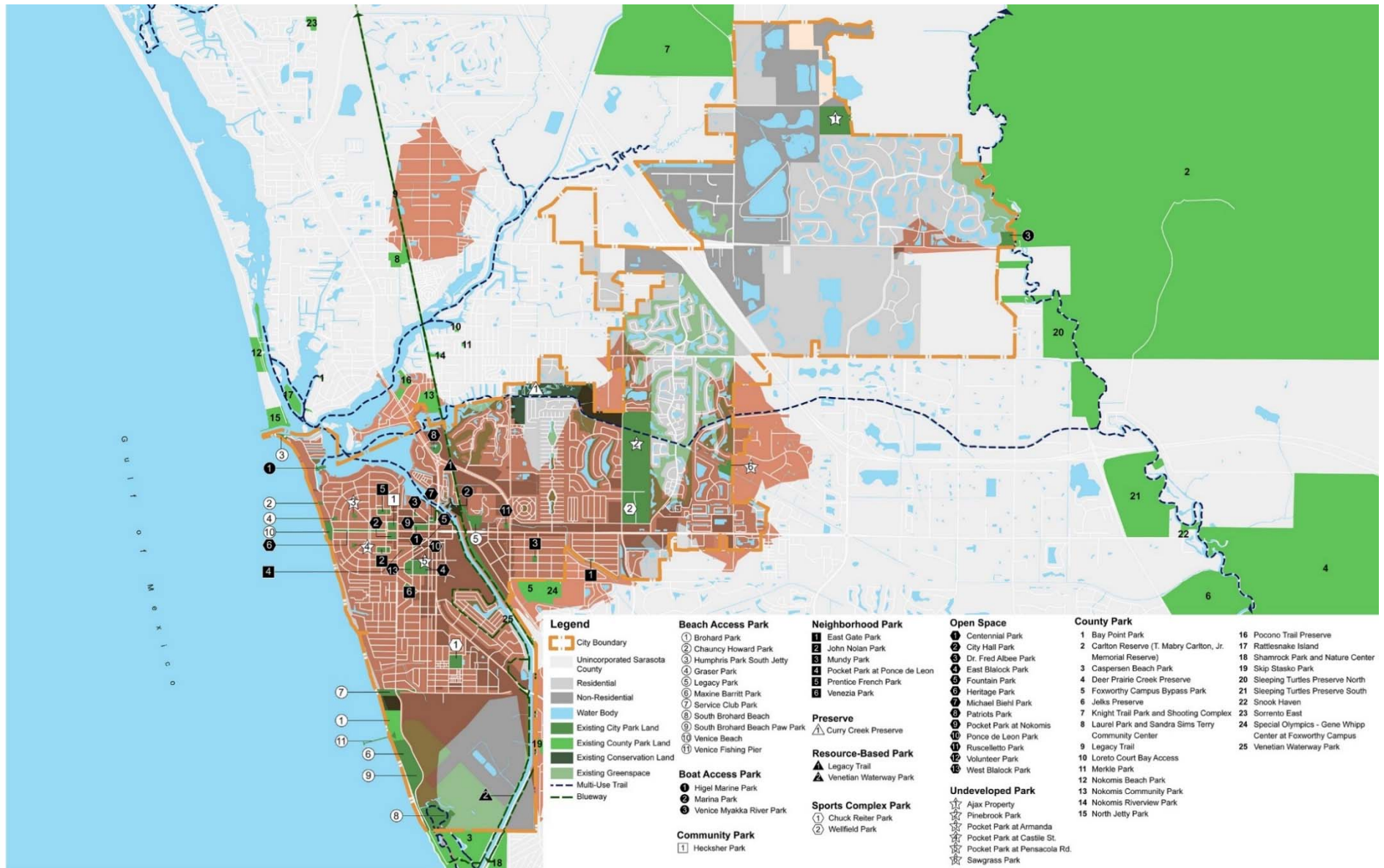
Access Level of Service – All Parks .25 Mile LOS



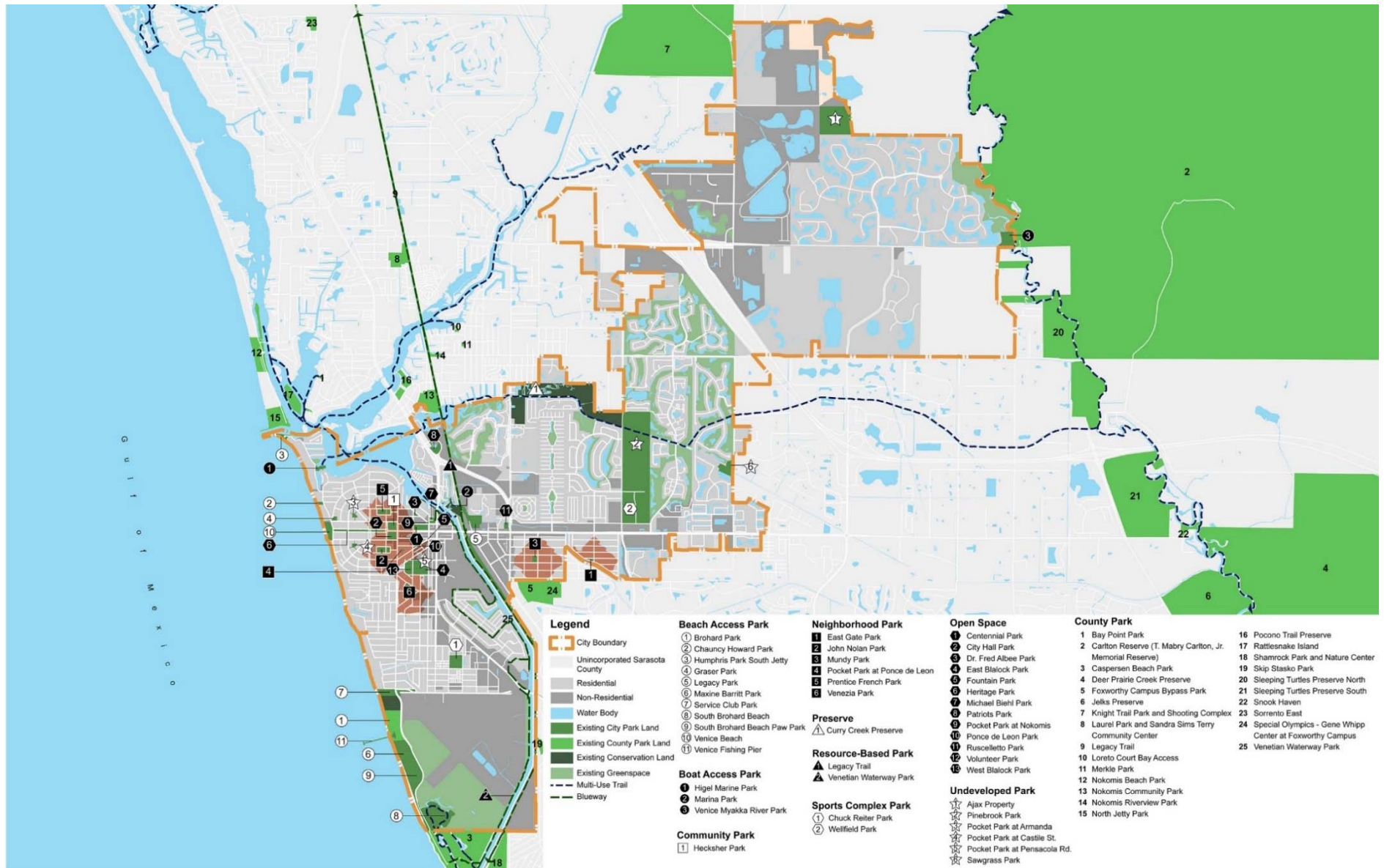
Access Level of Service – All Parks 0.5 Mile LOS



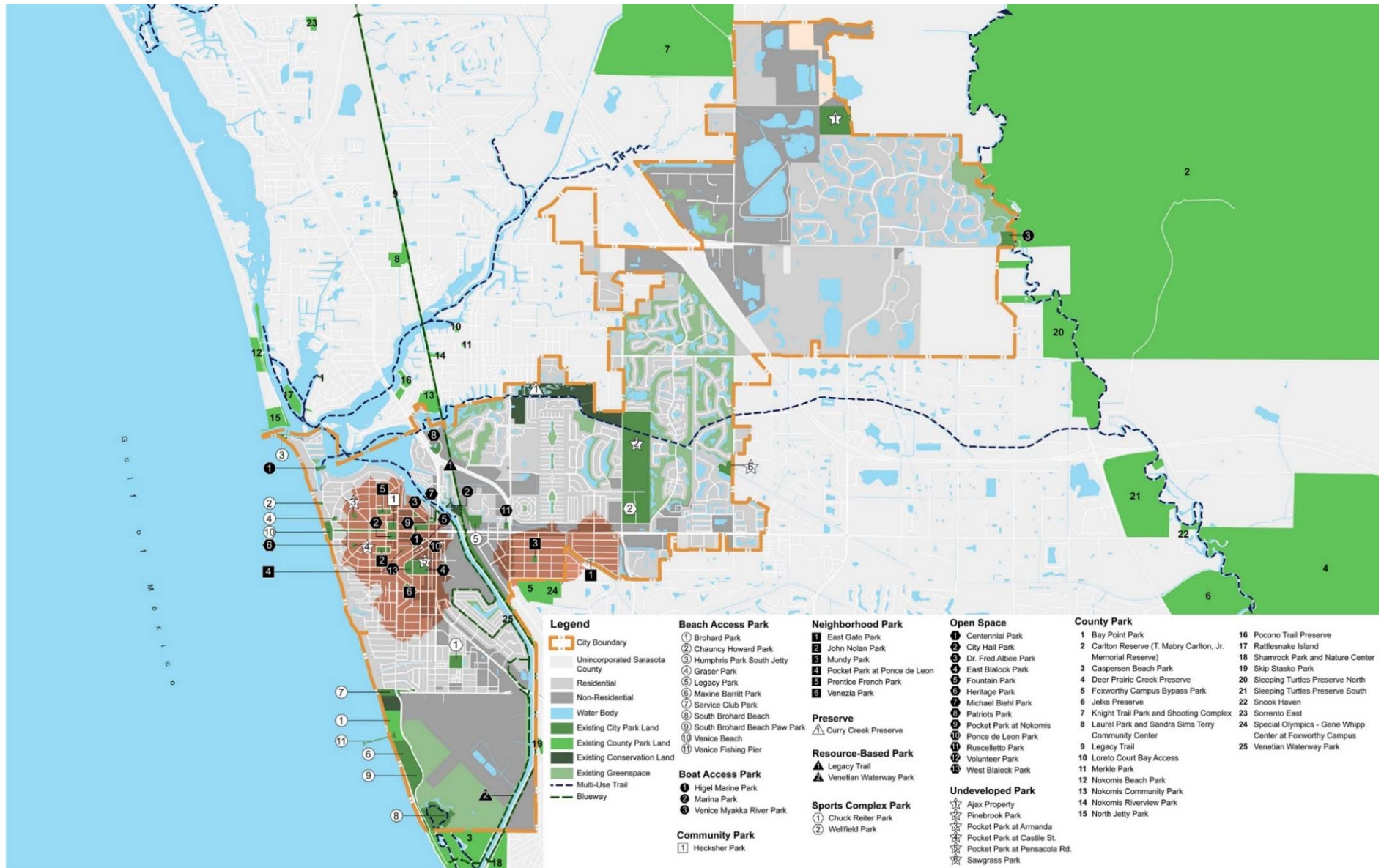
Access Level of Service – All Parks 1 Mile LOS



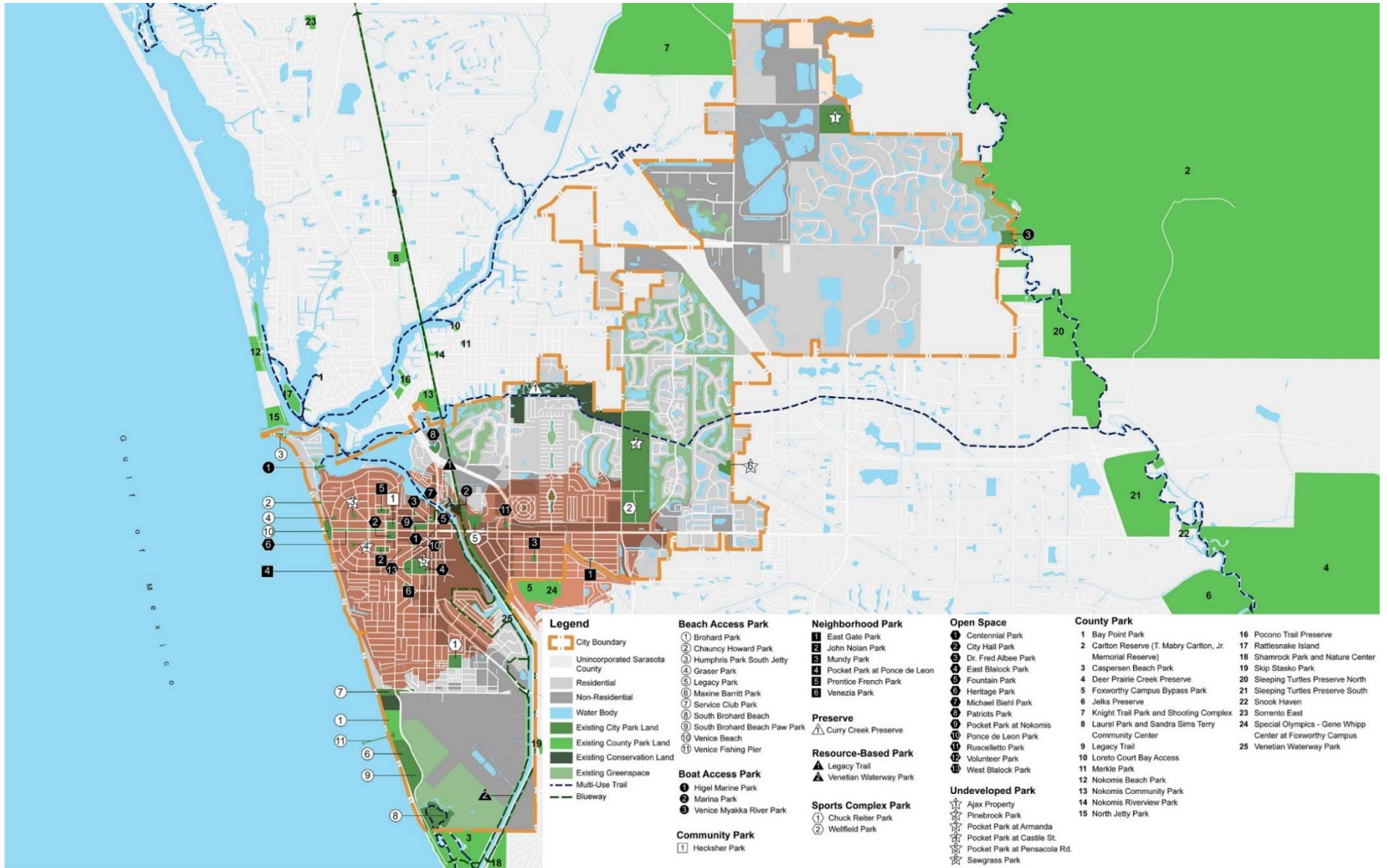
Access Level of Service – Neighborhood Parks 0.25 Mile LOS



Access Level of Service – Neighborhood Parks 0.5 Mile LOS



Access Level of Service – Neighborhood Parks 1 Mile LOS



Summary of Park Needs Based on Access LOS Parameters

Distances Parks Analyzed	Access Level of Service Needs per Distance			
	¼ Mile	½ Mile	1 Mile	2 Miles
All Parks	Parks needed throughout the City	Parks needed throughout the City	Parks needed predominantly east of I-75	N/A
Neighborhood Parks + Community Parks	Parks needed throughout the City	Parks needed throughout the City	Parks needed predominantly east of the Venetian Waterway	N/A
Multi-Use Trails	Multi-Use Trails needed throughout the City	Multi-Use Trails needed throughout the City	N/A	N/A
Natural Area Parks	N/A	N/A	Natural Areas Parks needed through the City	Natural Areas Parks needed predominantly east of I-75

Public Engagement

- Public workshops
- Interviews
- Focus group meetings
- Online survey

Public Workshops – Facility and Program Priorities

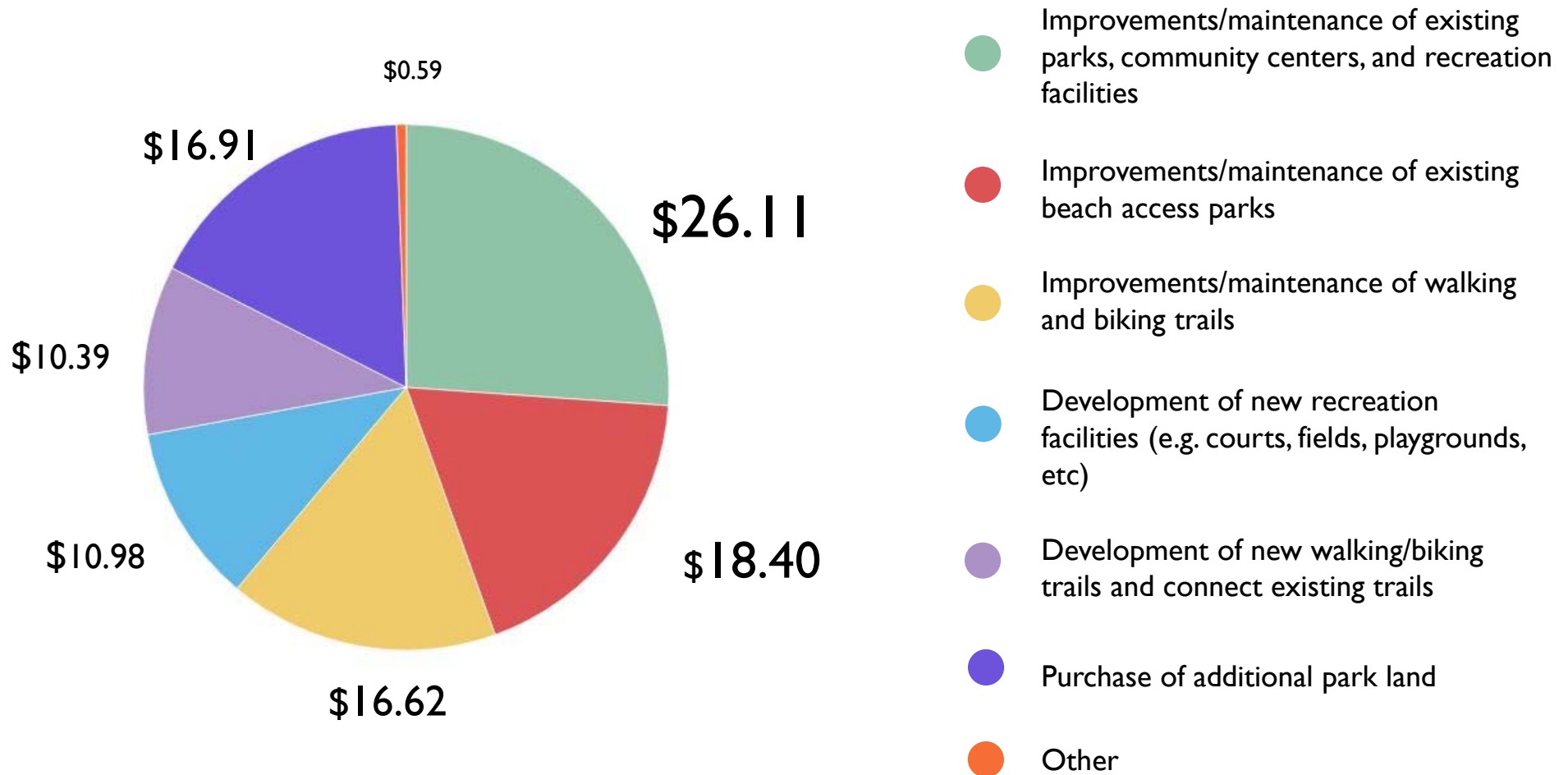
Northeast

- Natural areas and wildlife habitat
- Outdoor pickleball courts
- Nature programs
- Adult fitness and wellness programs, including fitness trainers

Southwest

- Off-leash dog park
- Canoe/ kayak launches
- Outdoor pickleball courts

Public Workshops – Spending Priorities



Stakeholder Interviews

Top Priorities

1. Redevelopment of Wellfield Park

including new croquet courts, restrooms, additional lighted multi-purpose fields, parking, and a playground.

2. Improved connectivity through trails, bike lanes, sidewalks, and complete streets including the River-to-River Trail, and Pinebrook and Border Road.

3. General improvements to existing parks such as pickleball courts, site furnishings, historic markers, signage, and more things for younger people to do.

Other Priorities

- Upgrade beach
- Equal treatment by the County
- Define “open space” in the Comp Plan
- Purchase property for conservation
- New south County sports complex
- New community park in NE Venice
- Reconstitution of the Parks Board to be more representative
- Re-negotiate inter-local agreements with the County
- Acquire and develop the Ajax property
- Development of a County urban forest
- Dog friendly park(s)
- Venezia Park
- City-wide design standards for historic markers, signage, site furnishings, and amenities

Funding Implementation

- General fund
- County surtax
- Grants
- User fees
- Impact fees

Over 50% of the participants also supported a referendum to ask voters to support bonds to pay for needed improvements.

Statistically Valid Survey



77.4% of Respondents

say that the primary reason they use Sarasota County-owned or operated facilities and activities is **because they are close to their home/residence.**

42.7% - Enjoyment of the outdoors

29.8% - Quality of natural aspects

23.4% - Facilities have the right amenities



41.9% of Respondents

say that the primary reason most likely to prevent or limit households from using Sarasota County-owned or operated facilities and activities is **because they are too far from their residence.**

30.6% - Facilities are too crowded/classes are full

24.2% - Do not know what programs are offered

17.7% - Security is insufficient/feels unsafe

Statistically Valid Survey



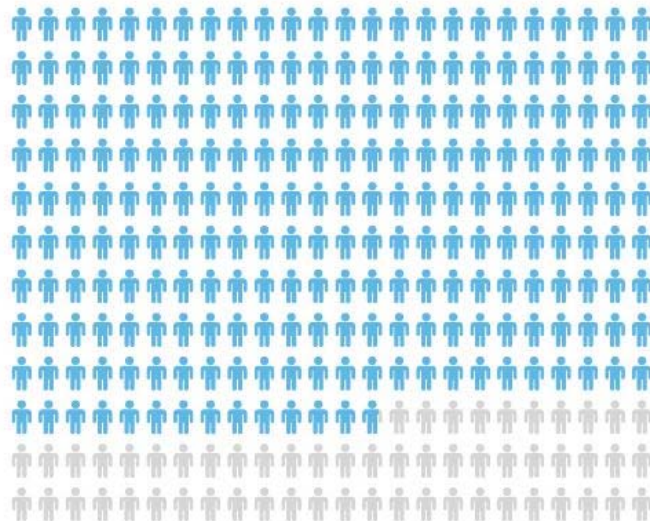
83.6% of Respondents

say that they use **beach recreation** most often.

65.5% - Walking/hiking/running

50.0% - Recreational swimming

49.1% - Cycling/biking



79.8% of Respondents

say that they have a need for **public recreational beach space**.

58.1% - Nature trails & centers/wildlife habitats

56.5% - Water access locations

55.0% - Paved trails

Statistically Valid Survey



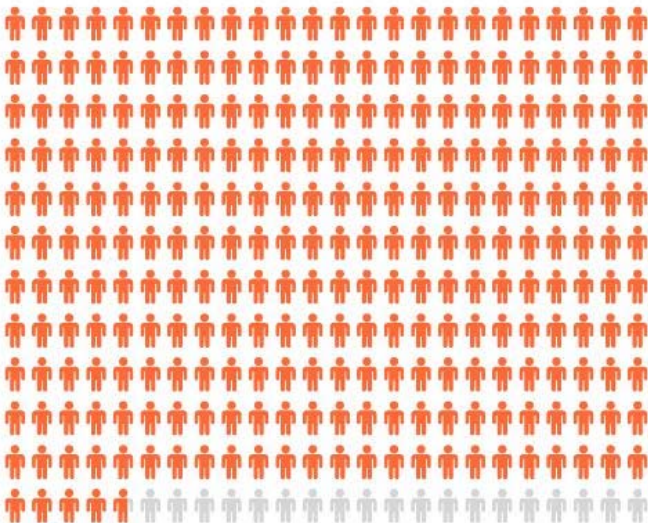
53.2% of Respondents

say that **public recreational beach space** is most important type of recreational facility to their household.

35.5% - Nature trails & centers/wildlife habitats

26.6% - Water access locations

23.4% - Paved trails



93.3% of Respondents

say that allocating funds to **repair, replace or expand beach parks** is most important based upon combined percentage of “very important” and “somewhat important” resources.

83.9% - Park restrooms

79.1% - Hiking/walking/biking trails

77.4% - Public access at existing preserves

Online Survey

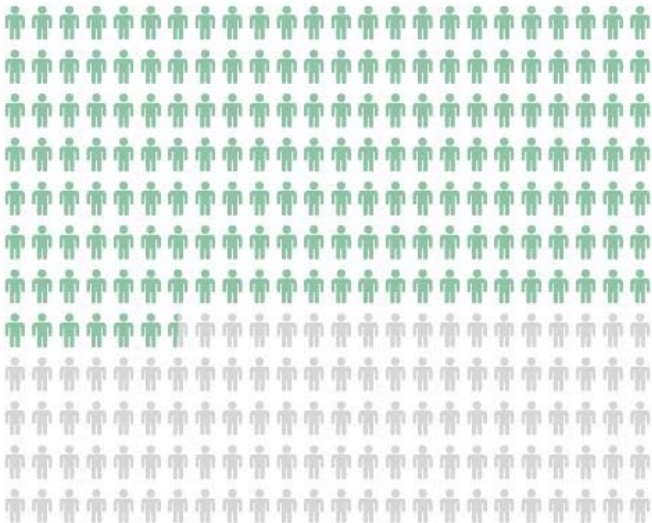


41.9% of Respondents

identified **Venice Beach** as the most visited park.

29.3% - Legacy Trail

25.2% - Centennial Park



60.6% of Respondents

say that the primary reason most likely to prevent or limit households from using City of Venice-owned or operated facilities and activities is **because they are too far from their residence**

36.9% - Do not know what programs are offered

32.1% - Lack of parking

Online Survey



46.9% of Respondents

identified **paved walking and biking trails** as the top facility they need more of.

41.8% - Small neighborhood parks

40.9% - Nature and hiking trails

37.1% - Natural areas and wildlife habitats

34.5% - Off-leash dog parks



46.0% of Respondents

say that the **paved walking and biking trails** is the facility most important to their household.

38.9% - Nature and hiking trails

31.1% - Small neighborhood parks

31.1% - Natural areas and wildlife habitats

Online Survey



41.1% of Respondents

identified **adult fitness and wellness programs** as the top program there are not enough of.

37.8% - Senior Adult Programs

36.7% - Nature programs

26.9% - Concession/vending in beaches and parks

23.6% - Adult arts and craft programs



65.6% of Respondents

say that they would be most supportive of **upgrading existing beach access parks** (i.e. grounds, restrooms, concessions, parking, shuttle access, etc).

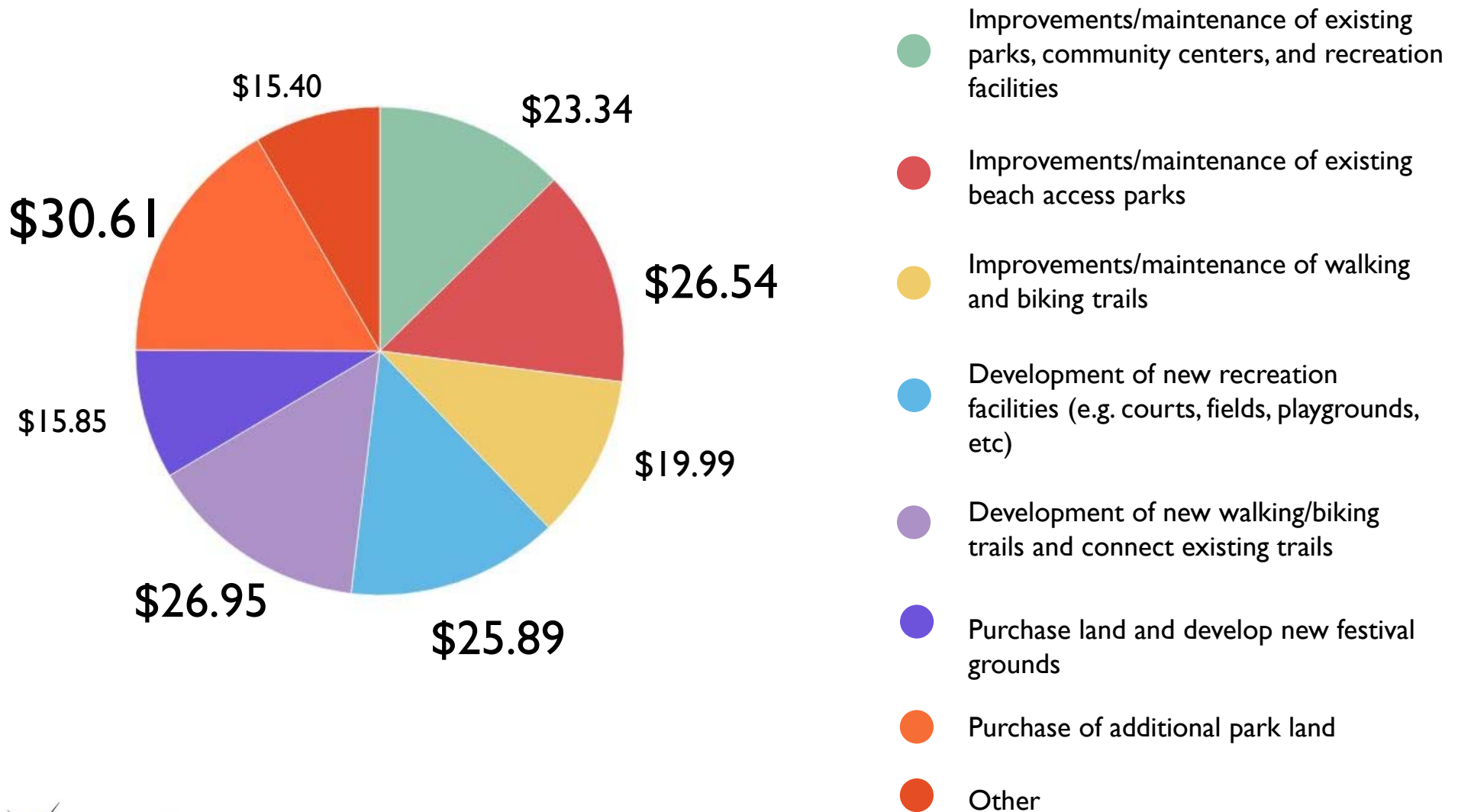
64.1% - Developing new walking/biking trails and connecting existing trails

59.8% - Upgrading existing walking/biking trails

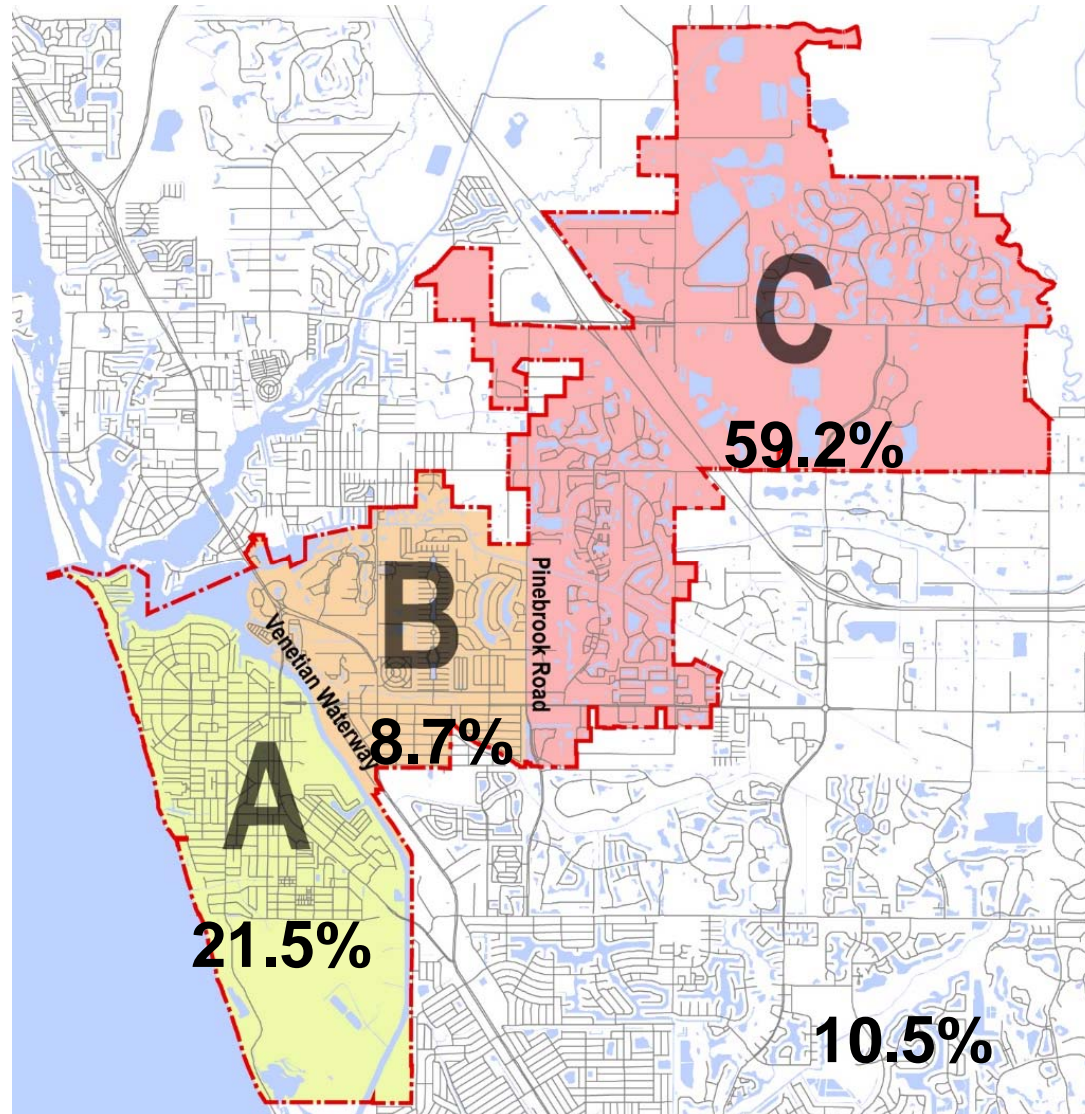
56.2% - Upgrading existing neighborhood community parks

Online Survey

Respondents noted that they would allocated an average of an additional \$100 in the following categories:



Online Survey



Online Survey

Survey Responses Per City of Venice Geographic Area			
Survey Question	A – On-Island 85 Respondents (21.5 %)	B – Central Venice 34 Respondents (8.7 %)	C- North East Venice 234 Respondents (59.2 %)
Q3 – Top three City of Venice Parks that you visit most.	<ol style="list-style-type: none"> 1. Venice Beach 2. Centennial Park 3. Humphris (South Jetty) Park 	<ol style="list-style-type: none"> 1. Humphris (South Jetty) Park 2. Venice Beach 3. Legacy Trail 	<ol style="list-style-type: none"> 1. Venice Beach 2. Venice Myakka River Park 3. Legacy Trail
Q5 – Three primary reasons that are most likely to prevent you from using a City of Venice Park.	<ol style="list-style-type: none"> 1. Don't know what is being offered 2. Lack of parking 3. Facility too crowded/classes full 	<ol style="list-style-type: none"> 1. Other 2. Too far from residence 3. Facility too crowded/classes full 	<ol style="list-style-type: none"> 1. Too far from our residence 2. Don't know what is being offered 3. Lack of parking
Q6 – Facilities that you need more of.	<ol style="list-style-type: none"> 1. Nature, hiking trails 2. Paved walking and biking trails 3. Natural areas and wildlife habitat 4. Canoe/kayak launches, Outdoor swimming pools/water park, Small neighborhood parks 	<ol style="list-style-type: none"> 1. Nature, hiking trails 2. Paved walking and biking trails 3. Amphitheater/bandshell 4. Off-leash dog park 	<ol style="list-style-type: none"> 1. Small neighborhood parks 2. Paved walking and biking trails 3. Outdoor pickleball courts 4. Off-leash dog park

Online Survey

Survey Responses Per City of Venice Geographic Area			
Survey Question	A – On-Island 85 Respondents (21.5 %)	B – Central Venice 34 Respondents (8.7 %)	C- North East Venice 234 Respondents (59.2 %)
Q7 – Four facilities that are most important to your household.	1. Paved walking and biking trails	1. Paved walking and biking trails	1. Paved walking and biking trails
	2. Nature, hiking trails	2. Nature, hiking trails	2. Nature, hiking trails
Q8 – Programs that there aren't enough of.	3. Natural areas and wildlife habitat	3. Natural areas and wildlife habitat	3. Small neighborhood parks
	4. Small neighborhood parks	4. Small neighborhood parks, Canoe / kayak launches	4. Natural areas and wildlife habitat
Q9 – Four programs that are most important to your household.	1. Nature programs	1. Concession/vending in beaches and parks	1. Senior adult programs
	2. Adult fitness and wellness programs	2. Nature programs	2. Adult fitness and wellness programs
	3. Senior Adult programs, Concession /vending in beaches and parks	3. Water fitness programs	3. Nature programs
	4. Adults arts and crafts programs	4. Youth arts and crafts programs, programs for disabled.	4. Concession /vending in beaches and parks
	1. Adult fitness and wellness programs	1. Adult fitness and wellness programs	1. Adult fitness and wellness programs
	2. Nature programs	2. Nature programs	2. Senior adult programs
	3. Senior adult programs	3. Senior adult programs	3. Nature programs
	4. Special events	4. Concession /vending in beaches and parks	4. Concession /vending in beaches and parks

Online Survey

Survey Responses Per City of Venice Geographic Area			
Survey Question	A – On-Island 85 Respondents (21.5 %)	B – Central Venice 34 Respondents (8.7 %)	C- North East Venice 234 Respondents (59.2 %)
Q15 – Actions that you would be Very Supportive of. (50% of respondents or more)	<ol style="list-style-type: none"> 1. Developing new walking/biking trails 2. Upgrade existing beach access parks 3. Upgrade existing neighborhood community parks 4. Upgrade existing walking/biking trails 	<ol style="list-style-type: none"> 1. Upgrade existing beach access parks 2. Develop new walking/biking trails 3. Upgrade existing neighborhood and community parks 4. Upgrade existing walking/biking trails 	<ol style="list-style-type: none"> 1. Upgrade existing beach access parks 2. Develop new walking/biking trails 3. Upgrade existing walking/biking trails 4. Upgrade existing neighborhood and community parks
Q16 – How would you allocate an additional \$100 dollars (Top 3)	<ol style="list-style-type: none"> 1. \$28.72 – Develop new walking/biking trails 2. \$25.93 – Improvements / maintenance to existing parks 3. \$25.10 --Improvements / maintenance of existing walking/biking trails 	<ol style="list-style-type: none"> 1. \$43.08 – Purchase additional park land 2. \$ 39.64 – Improvements / maintenance of existing parks 3. \$29.50 – Improvements /maintenance of existing beaches 	<ol style="list-style-type: none"> 1. \$32.14 – Purchase additional park land 2. \$ 30.27 – Development of new recreation facilities 3. \$27.30 – Improvements /maintenance of existing beaches

Summary of Needs + Priorities Assessment

	Needs Assessment Techniques					
	Online Survey	Statistically Valid Survey	Community Input Meetings	Stakeholder Interviews	LOS Analysis	Site Evaluations
ACTIONS						
Improvements/maintenance of existing beach access parks	●	●	●	●		●
Improvements/maintenance of existing parks, pools, and recreation facilities	●		●	●		●
Purchase additional park land	●		●	●	●	
Develop new walking/biking trails and connect existing trails	●	●		●	●	
Improvements/maintenance of existing walking/biking trails			●	●		●
Development of new recreation facilities (i.e. courts, fields, playgrounds, etc)	●				●	
FACILITIES						
Paved walking and biking trails	●	●		●	●	
Natural areas and wildlife habitat	●	●	●		●	
Nature, hiking trails	●	●				
Small neighborhood parks	●				●	
Off leash dog park	●		●			
Outdoor pickleball courts	●		●			
Outdoor swimming pools/water parks	●				●	
Outdoor basketball courts	●				●	
Canoe/Kayak launch	●					
PROGRAMS						
Beach Recreation	●	●				
Adult fitness and wellness programs	●		●			
Nature programs	●		●			
Water Fitness Programs	●	●				
Senior adult programs	●					
Adult arts and crafts programs	●					
Special Events	●					
Fishing Programs	●					

Presentation Outline



- Review of Existing Conditions + Needs Assessment Findings
- Review of Long Range Vision
- Review of Implementation Strategy
- Discussion

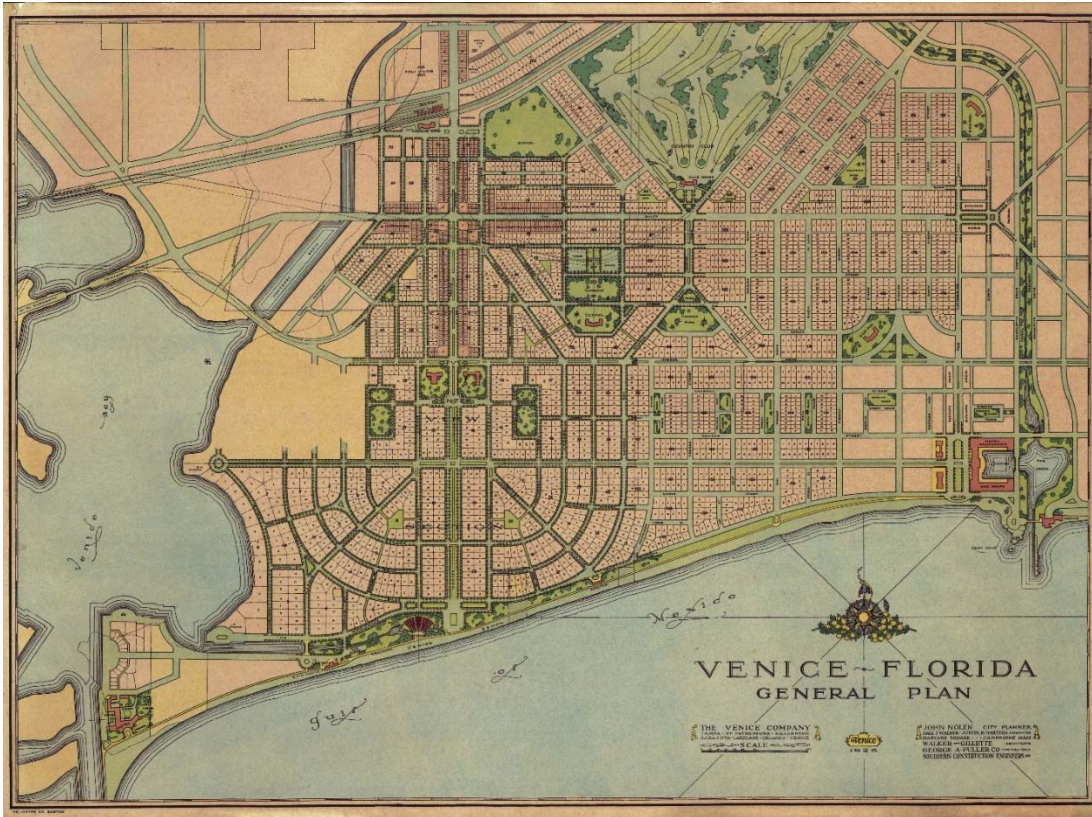
Long Range Vision Framework



Visioning Workshop – May 17, 2016

1. Maintaining the Integrity and Character of a John Nolen Public Realm
2. Beach Access Parks
3. Parks (Neighborhood, Community, Sports Complex, and Open Space Parks)
4. Natural Areas and Habitat
5. Trails and Bikeways

1. Maintaining the Integrity and Character of a Nolen Plan

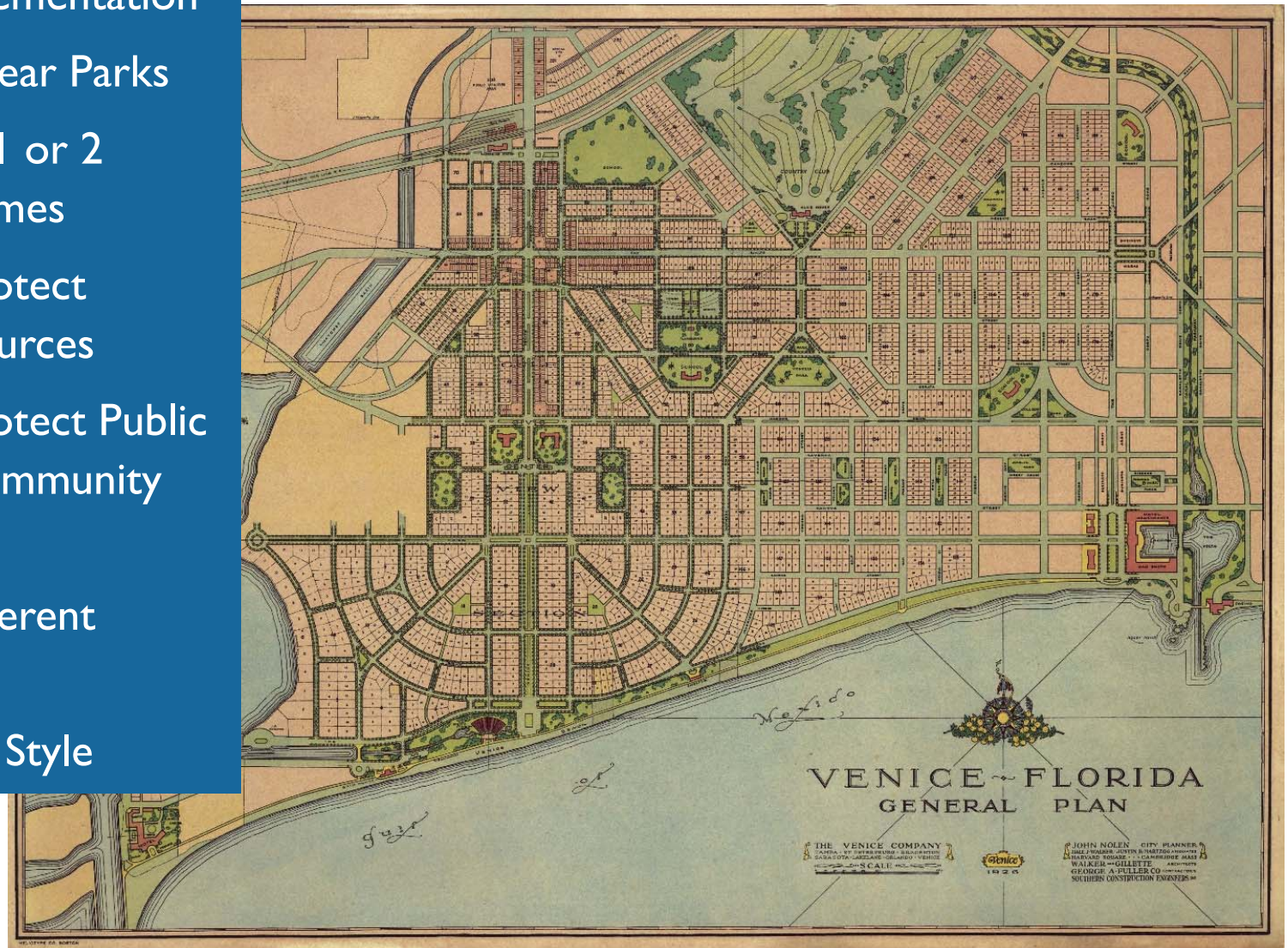


“Venice is the first city built to demonstrate what Florida can do to produce a community that is at once a fine resort of great charm and refreshment and a city serving all the every-day needs of a well – conceived, well-designed a soundly construction municipality. The result is an inspiration to those who would make this a word a better place to live in.” John Nolen

1. Maintaining the Integrity and Character of a Nolen Plan

Nolen Plan Principles

- Gradual Implementation
- Streets as Linear Parks
- Parks within 1 or 2 Blocks of Homes
- Parks that Protect Natural Resources
- Parks that Protect Public Access to Community Amenities
- Parks for Different Uses/Users
- Architectural Style



1. Maintaining the Integrity and Character of a Nolen Plan

Architectural Styles



- **Northern Italian**
- **Mediterranean Revival**

1. Maintaining the Integrity and Character of a Nolen Plan

Recommendations

- Providing parks with 1 or 2 blocks, not realistic
- Maintain walk-ability + bike-ability
- Preserve historic park system:
 - Improved maintenance
 - Use of high quality site furnishings and amenities
 - Additional facilities
 - Improved signage and way-finding
- Park Design Standards



1. Maintaining the Integrity and Character of a Nolen Plan

Recommendations

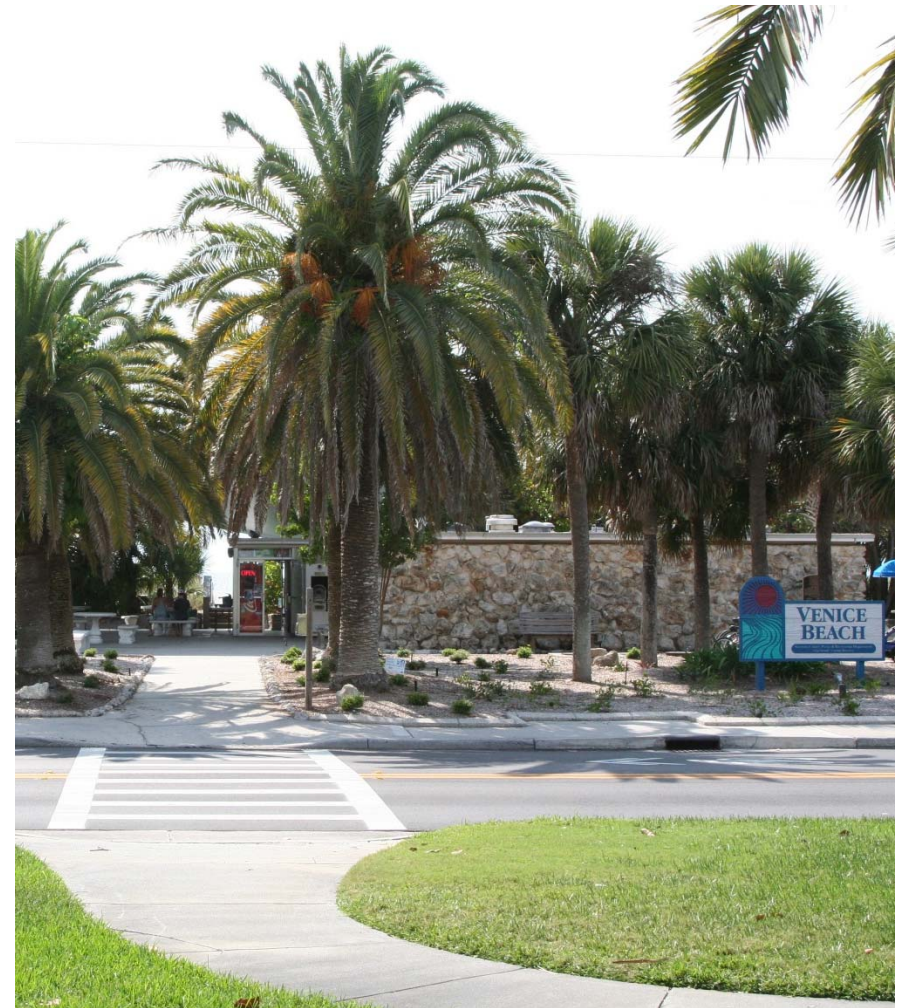
- Architectural Design Standards
 - Beach Theme
 - Modernist Architecture Theme (e.g. Sarasota School of Architecture)
 - Mediterranean Revival Theme
 - Historic Commission, Planning Commission, Public Art Advisory Council, and Architectural Review Board to discuss desired Architectural Design Standards
- Urban Forestry Plan
- Manage traffic and access through public transit, parking, sidewalks, bikeways, and trails



2. Beach Access Parks Vision

“to continue to provide safe, convenient access to enjoyable beach experiences for both residents and visitors”

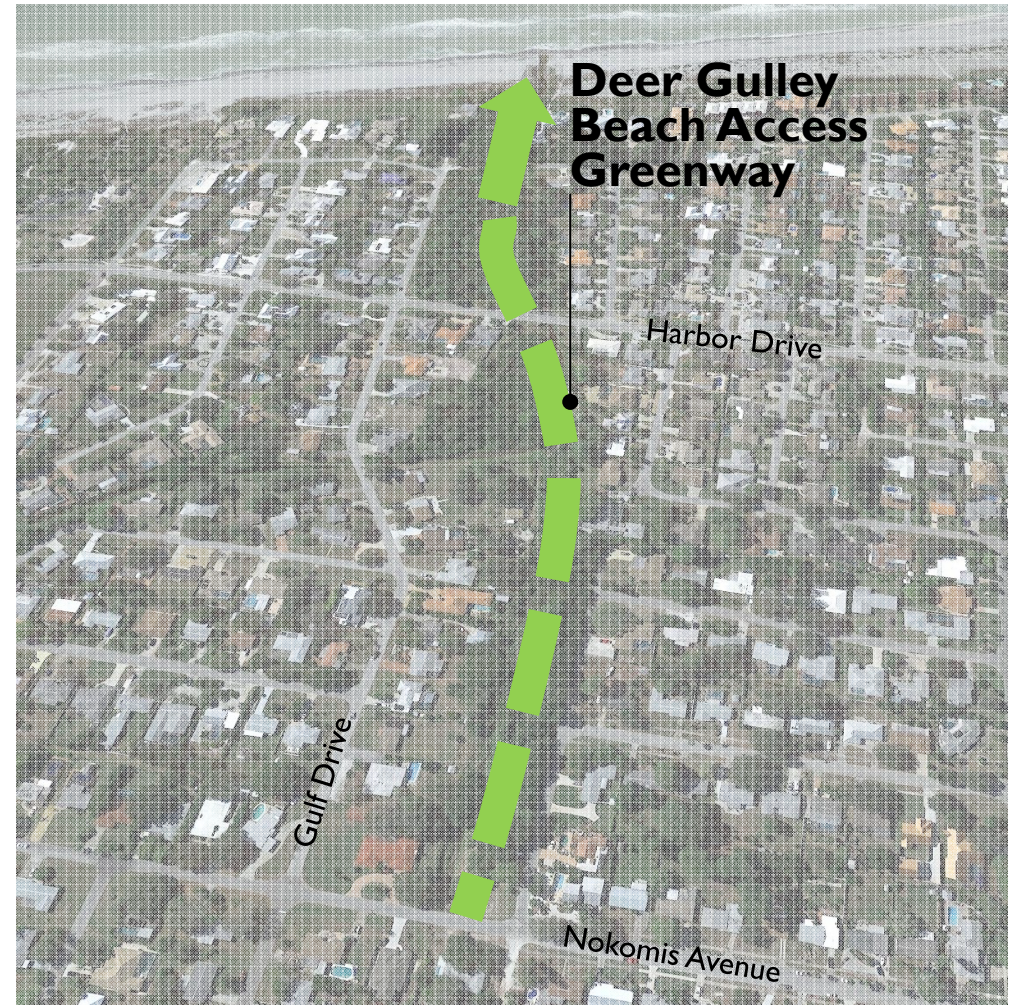
- Physical access (walking, bicycling, driving, parking, and transit)
- Capital Improvements
- Programming



2. Beach Access Parks

Physical Access

- Awareness of City Beach Access Parks
- Additional off-beach parking on roadways (e.g. Harbor Drive, The Esplanade, Golden Beach Boulevard)
- New beach access bicycle/pedestrian trail and boardwalk on Deer Gulley Greenway
- Shuttle service



2. Beach Access Parks Capital Improvements

- Add, improve, and/or expand facilities amenities:
 - Restrooms
 - Changing rooms
 - Concessions
 - Picnic tables
 - Shade Structures



2. Beach Access Parks Programs



2. Beach Access Parks Individual Park Improvements

- Brohard Park
- Higel Marine Park
- Legacy Park
- Service Club Park
- Venetian Waterway



- Constructing/replacing boardwalks and pavilions
- Adding more parking
- Providing easier access to the pier/pedestrian way to pier
- Improving pedestrian circulation to the park
- Improving maintenance associated with turf management and horticultural maintenance to enhance the appearance of the park
- Planting additional shade trees
- Adding more beach view platforms/tables
- Doubling size of the boat ramp
- Adding additional amenities (e.g. exercise equipment, playground, bocce ball courts, etc.)
- Replacing furnishings to be consistent with the City's desired character and image
- Adding signage, wayfinding, and environmental/interpretive signage

3. Parks (Neighborhood, Community, Sports Complex, Open Space Parks)

Vision

“to provide equitable access to passive and active recreational opportunities throughout the City”.



3. Parks (Neighborhood, Community, Sports Complex, Open Space Parks)

Wellfield Park

Current issues:

- Better maintenance - turf management and horticultural maintenance around common and parking areas
- Drainage problems
- Facility improvements
- Improved pedestrian, bicycle, and vehicular circulation
- Provide more facilities that meet the needs of local Venice residents; (most of the athletic fields are used by non-resident, youth sports associations)
- Keep the northern portion of the park in its existing natural state

3. Parks (Neighborhood, Community, Sports Complex, Open Space Parks)

Wellfield Park

Recommendations:

- Redesign park as multi-purpose Community Park that serves needs of athletic leagues + local residents:
 - Improved drainage, circulation, parking, and drainage
 - Upgraded athletic fields for softball, soccer, and football
 - New dedicated pickleball courts
 - Off-leash dog park
 - Improved pedestrian/bicycle/transit access to the park
 - Playground(s)
 - Picnic areas and pavilions
 - Concessions
 - New/improved restrooms
 - "Pinebrook Preserve" keeping the northern portion undeveloped and as a bird sanctuary
 - Connecting to Curry Creek Preserve
 - Removing lime sludge pits
 - Bridging to connect the north and south halves of the site
 - Upgrading walking path and exercise stations
 - Adding a canoe/kayak launch along Curry Creek located to the north of the site
 - Adding and replacing furnishings to be consistent with the City's desired character and image
 - Adding additional seating areas
 - Adding signage, wayfinding, and environmental/interpretive signage

3. Parks (Neighborhood, Community, Sports Complex, Open Space Parks)

Ajax Property

Recommendations:

- Design park as multi-purpose Community Park with:
 - Pickleball courts
 - Dog park
 - Playground
 - Wellness trail
 - A multi-purpose softball field (multi-purpose)
 - Kayaking/canoeing access to 400-acre County lake
 - Fishing
 - Picnic shelters
 - Restoration of native habitat and landscape
 - Parking
 - Restrooms
 - Shade trees

3. Parks (Neighborhood, Community, Sports Complex, Open Space Parks)

Pocket Parks

Recommendations:

- Reclaim and improve parks



Ex. Pocket Parks in Seaside, FL



3. Parks (Neighborhood, Community, Sports Complex, Open Space Parks)

Centennial Park



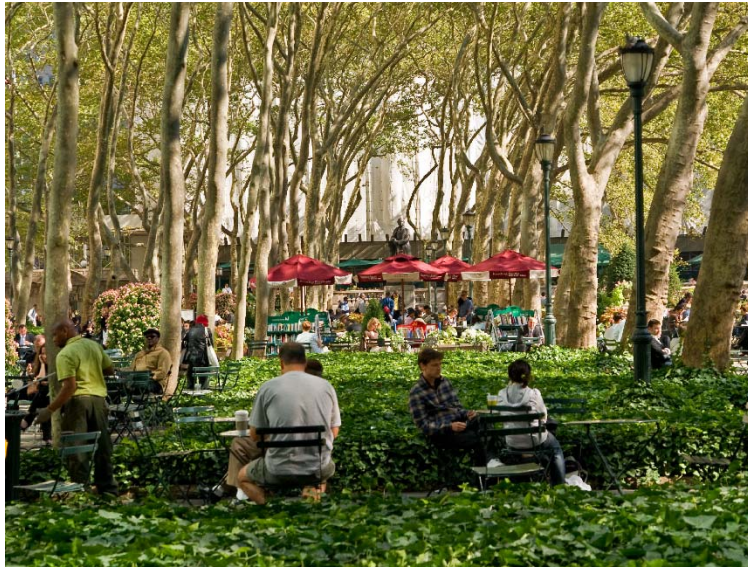
3. Parks (Neighborhood, Community, Sports Complex, Open Space Parks)

Centennial Park - Concept 1



3. Parks (Neighborhood, Community, Sports Complex, Open Space Parks)

Centennial Park - Concept 1



3. Parks (Neighborhood, Community, Sports Complex, Open Space Parks)

Centennial Park – Concept 2



3. Parks (Neighborhood, Community, Sports Complex, Open Space Parks)

Centennial Park – Concept 2



Mizner Park – Boca Raton, FL



3. Parks (Neighborhood, Community, Sports Complex, Open Space Parks)

Individual Park Improvements

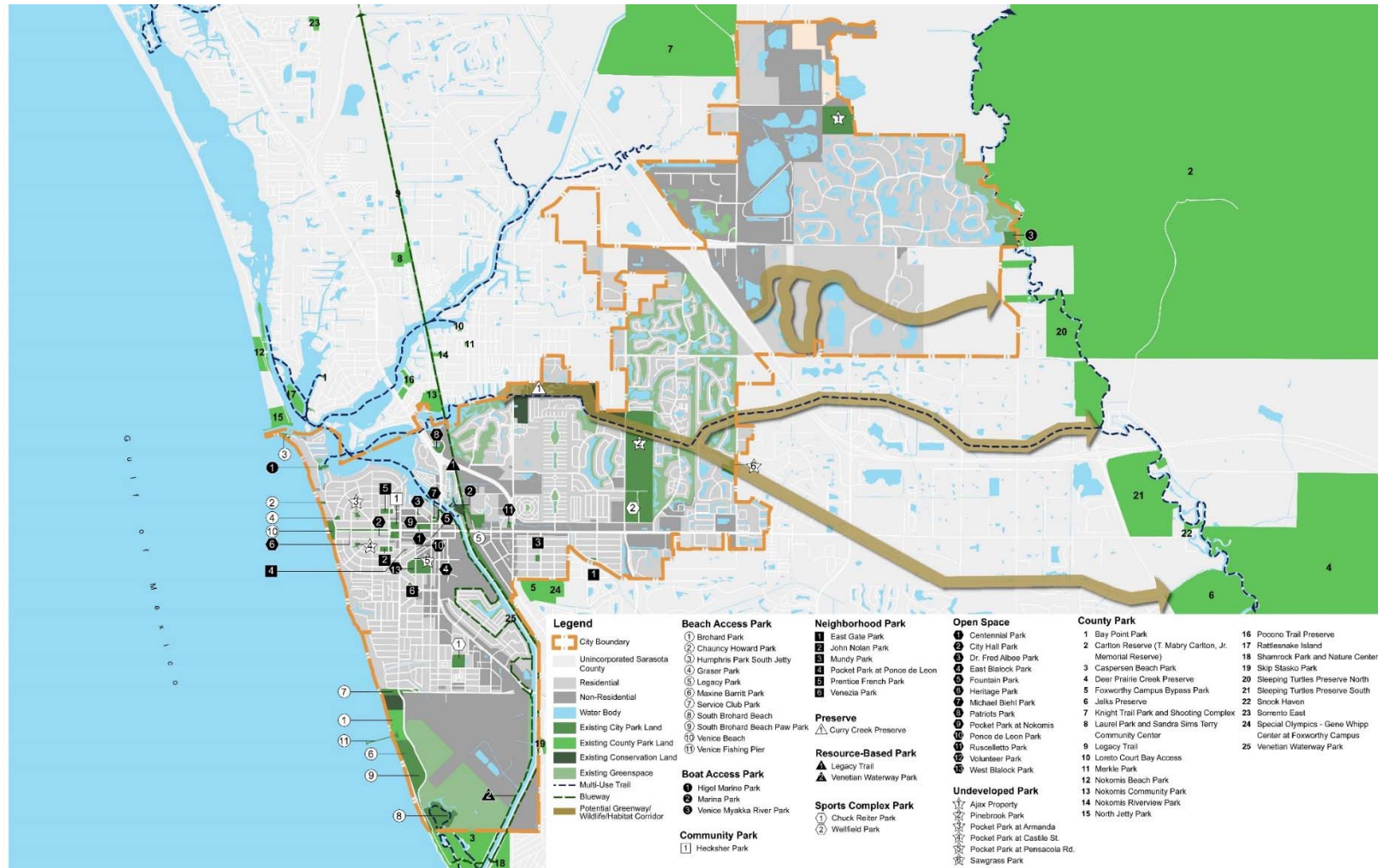
- Chuck Reiter Park
- Hecksher Park
- Heritage Park
- Venezia Park
- Venice Myakka Park



- Completing park master plans
- Improving maintenance - turf management and horticultural maintenance in common and parking areas to enhance the appearance of the park
- Improving circulation
- Improving park buildings, facilities, and amenities
- Expanding parking capacity
- Relocating park facilities to decompress parks
- Removing invasive plants and trees
- Replacing furnishings to be consistent with the City's desired character and image
- Adding signage, wayfinding, and environmental / interpretive signage

4. Natural Areas and Habitat Vision

“Put the “e” (environment) back in Venice”



4. Natural Areas and Habitat Vision

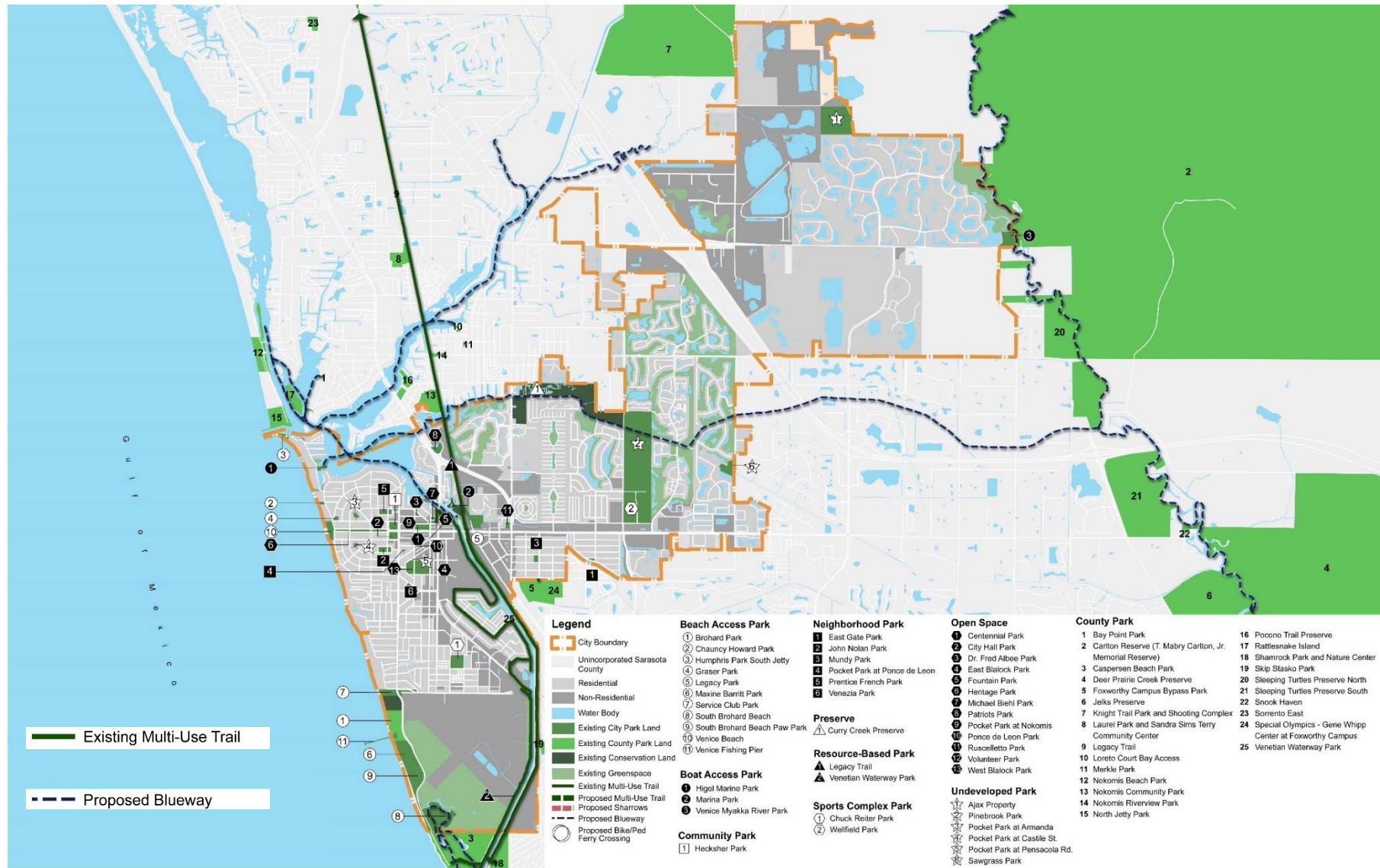
The City + Environmental Advisory Group to:

- Advocate for native planting along canals
- Protection of wetlands and nesting areas
- Development of greenways and habitat/wildlife corridors
- More stringent code requirements
- Elimination of exotic vegetation
- Restore Curry Creek
- Protect wetlands, nesting, areas, birding

City + Sarasota County to develop City-wide management plans for its natural areas and habitat that include:

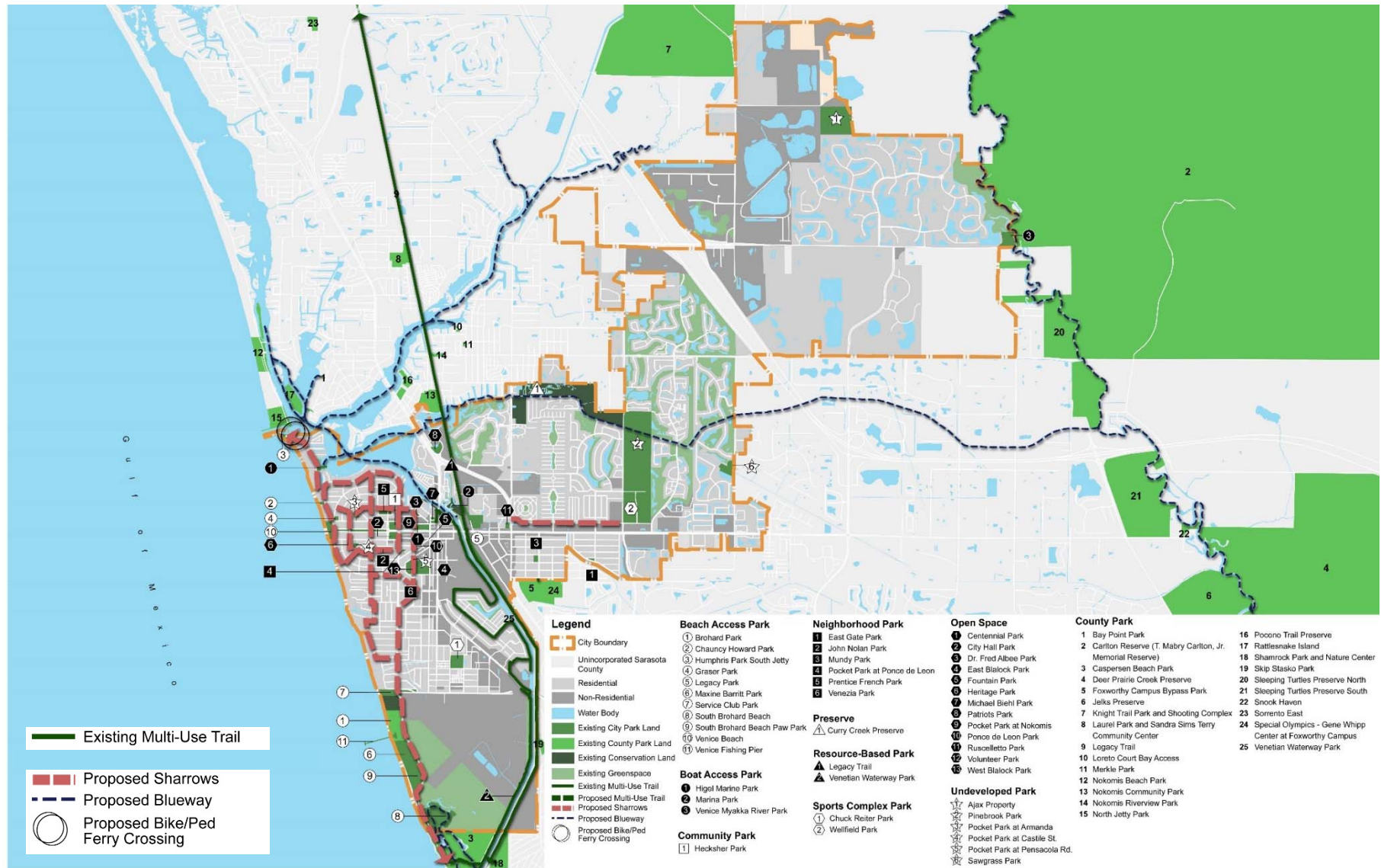
- Management goals and objectives
- Site management plans:
 - Recreational access
 - Best practices
 - Specific management actions
- Management plan should address both public and private lands, and incorporate the Venice Area Beautification Inc. (VABI) “ribbons of Venice”.

4. Trails and Bikeways Vision – Existing System



4. Trails and Bikeways

Vision – Proposed Sharrows + Bike Ferry



4. Trails and Bikeways

Vision – Proposed Sharrows + Bike Ferry

Sharrows

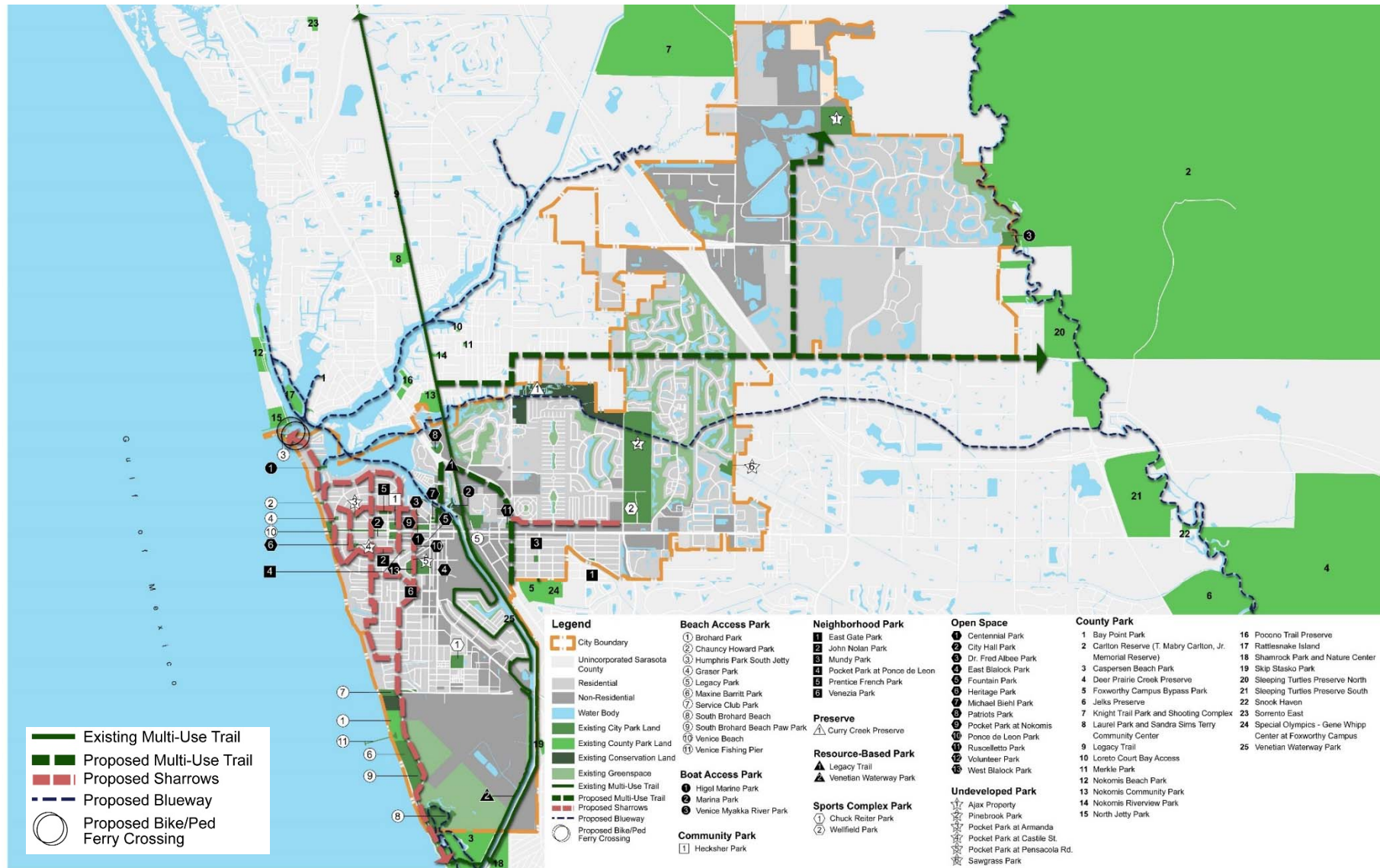


Bike Ferry



4. Trails and Bikeways

Vision – Proposed Multi-Purpose Trail



4. Trails and Bikeways

Vision – Proposed Multi-Purpose Trail



4. Trails and Bikeways

Vision – Proposed Multi-Purpose Trail



Presentation Outline



- Review of Existing Conditions + Needs Assessment Findings
- Review of Long Range Vision
- Review of Implementation Strategy
- Discussion

Summary of Needs + Priorities Assessment

	Needs Assessment Techniques					
	Online Survey	Statistically Valid Survey	Community Input Meetings	Stakeholder Interviews	LOS Analysis	Site Evaluations
ACTIONS						
Improvements/maintenance of existing beach access parks	●	●	●	●		●
Improvements/maintenance of existing parks, pools, and recreation facilities	●		●	●		●
Purchase additional park land	●		●	●	●	
Develop new walking/biking trails and connect existing trails	●	●		●	●	
Improvements/maintenance of existing walking/biking trails			●	●		●
Development of new recreation facilities (i.e. courts, fields, playgrounds, etc)	●				●	
FACILITIES						
Paved walking and biking trails	●	●		●	●	
Natural areas and wildlife habitat	●	●	●		●	
Nature, hiking trails	●	●				
Small neighborhood parks	●				●	
Off leash dog park	●		●			
Outdoor pickleball courts	●		●			
Outdoor swimming pools/water parks	●				●	
Outdoor basketball courts	●				●	
Canoe/Kayak launch	●					
PROGRAMS						
Beach Recreation	●	●				
Adult fitness and wellness programs	●		●			
Nature programs	●		●			
Water Fitness Programs	●	●				
Senior adult programs	●					
Adult arts and crafts programs	●					
Special Events	●					
Fishing Programs	●					

Acreage Level of Service – Existing Developable Park Land + 34 Acres - Ajax Park Property

			2015 (22,325)			2020 (23,777)			2025 (25,170)			2030 (27,020)			
Park Acreage Calculation		Acreage	Venice Comprehensive Plan Acreage LOS Target (x 1,000 population)	2015 Acres per 1,000 population (Acres per 1,000 population)	2015 Target Acreage	Acreage Need /Surplus	2020 Acres per 1,000 population (Acres per 1,000 population)	2020 Target Acreage	Acreage Need /Surplus	2025 Acres per 1,000 population (Acres per 1,000 population)	2025 Target Acreage	Acreage Need /Surplus	2030 Acres per 1,000 population (Acres per 1,000 population)	2030 Target Acreage	Acreage Need /Surplus
Total Park Acreage	525.94	7.00	23.6	156.28	370	22.1	166.44	360	20.9	176.19	350	19.5	189.14	337	
Community Park, Neighborhood Park, Urban Open Space, Sports Complex, Undeveloped Park Land	271.84	-	12.2	-	-	11.4	-	-	10.8	-	-	10.1	-	-	
Beach Access Park, Boat Access Park, Preserve, Resource-Based Park	254.10	-	11.4	-	-	10.7	-	-	10.1	-	-	9.4	-	-	

Acreage Level of Service - Recommendations

			2015 (22,325)			2020 (23,777)			2025 (25,170)			2030 (27,020)			
Park Acreage Calculation		Acreage	Venice Comprehensive Plan Acreage LOS Target (x 1,000 population)	2015 Acres per 1,000 population (Acres per 1,000 population)	2015 Target Acreage	Acreage Need /Surplus	2020 Acres per 1,000 population (Acres per 1,000 population)	2020 Target Acreage	Acreage Need /Surplus	2025 Acres per 1,000 population (Acres per 1,000 population)	2025 Target Acreage	Acreage Need /Surplus	2030 Acres per 1,000 population (Acres per 1,000 population)	2030 Target Acreage	Acreage Need /Surplus
Total Park Acreage	525.94	7.00	23.6	156.28	370	22.1	166.44	360	20.9	176.19	350	19.5	189.14	337	
Community Park, Neighborhood Park, Urban Open Space, Sports Complex, Undeveloped Park Land	271.84	12.0	12.2	267.90	4	11.4	285.32	(13)	10.8	302.04	(30)	10.1	324.24	(52)	
Beach Access Park, Boat Access Park, Preserve, Resource-Based Park	254.10	-	11.4	-	-	10.7	-	-	10.1	-	-	9.4	-	-	

Acreage Level of Service - Recommendations

- Refine the current Acreage LOS standard in the Comprehensive Plan to a “developable park land” Acreage LOS
- Increase the target from 7 acres per 1,000 residents to at least 12 acres per 1,000 residents

Summary of Needs + Priorities Assessment

	Needs Assessment Techniques					
	Online Survey	Statistically Valid Survey	Community Input Meetings	Stakeholder Interviews	LOS Analysis	Site Evaluations
ACTIONS						
Improvements/maintenance of existing beach access parks	●	●	●	●		●
Improvements/maintenance of existing parks, pools, and recreation facilities	●		●	●		●
Purchase additional park land	●		●	●	●	
Develop new walking/biking trails and connect existing trails	●	●		●	●	
Improvements/maintenance of existing walking/biking trails			●	●		●
Development of new recreation facilities (i.e. courts, fields, playgrounds, etc)	●				●	
FACILITIES						
Paved walking and biking trails	●	●		●	●	
Natural areas and wildlife habitat	●	●	●		●	
Nature, hiking trails	●	●				
Small neighborhood parks	●				●	
Off leash dog park	●		●			
Outdoor pickleball courts	●		●			
Outdoor swimming pools/water parks	●				●	
Outdoor basketball courts	●				●	
Canoe/Kayak launch	●					
PROGRAMS						
Beach Recreation	●	●				
Adult fitness and wellness programs	●		●			
Nature programs	●		●			
Water Fitness Programs	●	●				
Senior adult programs	●					
Adult arts and crafts programs	●					
Special Events	●					
Fishing Programs	●					

Maintenance-Operating Budget per Acre

	City of Venice	National Benchmarks*		
		Lower Quartile	Median	Upper Quartile
Total Acres of park land maintained in the City of Venice by the City of Venice and Sarasota County[^]	367.94			
Total Operating Budget allocated by City of Venice and Sarasota County (Inferred)[^]	\$1,653,488			
Operating Budget Per Acre	\$4,493	\$4,163	\$8,884	\$17,597

*Source: National Recreation and Parks Association (NRPA) PRORAGIS Field Report, 2015

[^]Source: City of Venice, City of Venice Budget, Adopted Budget Fiscal Year 2016, Sarasota county Parks and Recreation Annual Report 2015 – City of Venice, and Sarasota County, Adopted Budget Fiscal Year 2015



Parks and Recreation Master Plan



Maintenance – Acres Maintained per FTE

	City of Venice	National Benchmarks*		
		Lower Quartile	Median	Upper Quartile
Acres of park land maintained and managed by the City of Venice**	58.89			
Full Time Equivalent (FTE) positions^	12.7			
Acres of Land Maintained and Managed per FTE	4.64	5.4	12.8	24.1

*Source: National Recreation and Parks Association (NRPA) PRORAGIS Field Report, 2015

**Source: City of Venice

^Source: City of Venice Budget, Adopted Budget Fiscal Year 2016

Maintenance – Recommendations

- Increase maintenance resources
- Develop a comprehensive maintenance plan for the system and for each individual park
- Develop a specific level of services for each park or areas within a park, based on NRPA's 6 levels:
 - *Level 1* – High visibility areas that require the highest level of maintenance.
 - *Level 2* – Is the normal standard and what an individual expects to see on a regular basis.
 - *Level 3 and 4* – These two levels are just below the norm and include reductions in frequency of maintenance with a focus on safety. These levels are often utilized when there are budget and manpower reductions.
 - *Level 5* – This level is one step above allowing the land to return to its original state.
 - *Level 6* – This level allows the land to return to its original natural state or open space that is already in its natural condition.

Year 1 Implementation Strategy

- Increase maintenance resources and practices
 - Upgrade facilities and amenities at existing parks, including site furnishings, pickleball courts, dog park, and fitness trail
 - Complete Ajax Property Park Master Plan
 - Develop Park and Street Design Standards
 - Develop Architectural Design Standards for new, improved civic buildings
- \$500,000 from City's General Fund + County Surtax
 - City to seek additional funds through grants, bonds, donations, impact fees, and/or other funding initiatives

Year 2-6 Implementation Strategy

- Construction improvements to Ajax Park
 - Beach improvements including Beach Access park facility improvements
 - Upgrade facilities and amenities at existing parks
 - Explore the feasibility of running a bicycle ferry from South to North Jetty Park
 - Complete Joint City/County Master Plan at Wellfield Park
 - Implement Sharrows in Downtown Streets
- \$2,500,000 from City's General Fund + County Surtax
 - City to seek additional funds through grants, bonds, donations, impact fees, and/or other funding initiatives

Year 7-20 Implementation Strategy

- Complete an update to City of Venice Parks Master Plan (every five years)
 - Construct improvements to Ajax Park
 - Jointly construct improvements to Wellfield Park
 - Construct a trail and boardwalk along Deer Gulley Greenway
 - Implement Sharrows along Ridgewood Avenue between Bypass and Wellfield Park
 - Jointly construct multi-purpose trail along Tamiami Trail
 - Beach improvements including Beach Access Park facility improvements
 - Upgrade facilities and amenities at existing parks
- \$7,500,000 from City's General Fund + County Surtax
 - City to seek additional funds through grants, bonds, donations, impact fees, and/or other funding initiatives



Presentation Outline



- Review of Existing Conditions + Needs Assessment Findings
- Review of Long Range Vision
- Review of Implementation Strategy
- Discussion