

PHASE 2 JACARANDA BLVD BUFFER

ACCENT TREES	QTY	BOTANICAL NAME	COMMON NAME	CONT	CAL	SIZE
SPAR	5	Juniperus chinensis 'Spartan'	Spartan Juniper	Container		12' x 5' spr
JB-10	20	Juniperus virginiana 'Brodie'	Brodie Columnar Cedar	Container or RPG		10' x 4' spr
LJ-T	12	Ligustrum japonicum	Japanese Privet	Container		8' x 7-8' spr
MYR	40	Myrica cerifera	Wax Myrtle	B & B		8'x5' spr
SP	10	Sabal palmetto	Cabbage Palmetto	B & B		10-16' ct

CANOPY TREES	QTY	BOTANICAL NAME	COMMON NAME	CONT	CAL	SIZE
MAG	6	Magnolia grandiflora 'DD Blanchard'	DD Blanchard Magnolia	Container or RPG	3'Cal	10-12' x 5' spr
QV-3	11	Quercus virginiana	Live Oak	Container or RPG	3'Cal	14' x 5' spr

EVERGREEN TREES	QTY	BOTANICAL NAME	COMMON NAME	CONT	CAL	SIZE
PE	24	Pinus ellioti	Slash Pine	Container or RPG	3'Cal	12' x 4' spr

SHRUBS	QTY	BOTANICAL NAME	COMMON NAME	CONT	CAL	SIZE
DE	115	Duranta erecta 'Gold Mound'	Gold Mound Duranta	3 gal, 24" Min Ht		3 gal, 24" Min Ht
VO-6	12	Viburnum odoratissimum	Sweet Viburnum	Cont, 5-6' oah		

SHRUB AREAS	QTY	BOTANICAL NAME	COMMON NAME	CONT	CAL	SIZE
JM	194	Jasminum multiflorum	Downey Jasmine	3 gal, 24" Min Ht		3 gal, 24" Min Ht
NOPP	109	Nerium oleander 'Petite Pink'	Petite Pink Oleander	3 gal, 24" Min Ht		3 gal, 24" Min Ht
TD	112	Tripsacum dactyloides	Fakahatchee Grass	3 gal, 24" Min Ht		

GROUND COVERS	QTY	BOTANICAL NAME	COMMON NAME	CONT	CAL	SIZE
DT	79	Dianella tasmanica 'Blueberry'	Blueberry Flax Lily	3 gal		

JACARANDA BUFFER 1,040 LF

Required	Total Trees & Shrubs Required	Proposed
30' Buffer Width		50' Buffer Width
3 Canopy Trees / 100 lf (w/ a min of 2 of the Trees / 100 lf Located in front of Wall).	21 Trees - Front of Wall 11 Trees - Rear of Wall 32 Total Buffer Trees	Trees in Front of the Wall 24 Pines, 11 Live Oaks 6 Magnolias = 41 Trees Behind the Wall 48 Pines, 10 Live Oaks = 59
5 Accent Trees / 100 lf	52 Trees	Accent Trees in Front of the Wall 5 Spartan, 20 Brodie, 12 Ligustrum, 40 Myrtle, 10 Sabal Palms = 87 Accent Trees Behind the Wall 12 Sabal Palms = 12
43 Shrubs / 100 lf	448 Shrubs	Shrubs in Front of the Wall 140 Downey Jasmine 109 Dwarf Oleander, 112 Fakahatchee, 115 Duranta = 476 Shrubs Behind the Wall 32 Viburnum

PHASE 2 BORDER ROAD BUFFER

ACCENT TREES	QTY	BOTANICAL NAME	COMMON NAME	CONT	CAL	SIZE
CE	50	Conocarpus erectus	Buttonwood	Container		8'x5' spr
IC	56	Ilex cassine	Dahoon Holly by Builder	3" cal, 10-12' oah		
SPAR	24	Juniperus chinensis 'Spartan'	Spartan Juniper	Container		12' x 5' spr
JB-10	23	Juniperus virginiana 'Brodie'	Brodie Columnar Cedar	Container or RPG		10' x 4' spr
LJ-T	39	Ligustrum japonicum	Japanese Privet	Container		8' x 7-8' spr
MYR	10	Myrica cerifera	Wax Myrtle	B & B		8'x5' spr

CANOPY TREES	QTY	BOTANICAL NAME	COMMON NAME	CONT	CAL	SIZE
MAG	36	Magnolia grandiflora 'DD Blanchard'	DD Blanchard Magnolia	Container or RPG	3'Cal	10-12' x 5' spr
QV-3	23	Quercus virginiana	Live Oak	Container or RPG	3'Cal	14' x 5' spr

EVERGREEN TREES	QTY	BOTANICAL NAME	COMMON NAME	CONT	CAL	SIZE
PE	33	Pinus ellioti	Slash Pine	Container or RPG	3'Cal	12' x 4' spr

SHRUBS	QTY	BOTANICAL NAME	COMMON NAME	CONT	CAL	SIZE
NO	21	Nerium oleander 'Calypso'	Calypso Oleander	10 gal, 48" Min Ht		

SHRUB AREAS	QTY	BOTANICAL NAME	COMMON NAME	CONT	CAL	SIZE
JM	464	Jasminum multiflorum	Downey Jasmine	3 gal, 24" Min Ht		3 gal, 24" Min Ht
NOPP	232	Nerium oleander 'Petite Pink'	Petite Pink Oleander	3 gal, 24" Min Ht		3 gal, 24" Min Ht
TD	737	Tripsacum dactyloides	Fakahatchee Grass	3 gal, 24" Min Ht		

GROUND COVERS	QTY	BOTANICAL NAME	COMMON NAME	CONT	CAL	SIZE
DT	510	Dianella tasmanica 'Blueberry'	Blueberry Flax Lily	3 gal		

BORDER ROAD BUFFER 2,700 LF

Required	Total Trees & Shrubs Required	Proposed
30' Buffer Width		50' Buffer Width
4 Canopy Trees / 100 lf (w/ a Min of 2 of the Trees / 100 lf Located in front of Wall).	54 Trees - Front of Wall 54 Trees - Rear of Wall 108	Trees in Front of the Wall 33 Pines, 23 Live Oaks, 36 Magnolias = 92 Trees Behind the Wall: 37 Live Oaks, 78 Red Cedar, 108 Pine = 223
7 Accent Trees / 100 lf	189 Trees	Accent Trees in Front of the Wall: 50 Silver Buttonwood, 56 Dahoon, 23 Brodi, 24 Spartan, 39 Tree Ligustrum, 10 Wax Myrtle = 202 Accent Trees Behind the Wall: 0
43 Shrubs / 100 lf	1161 Shrubs	Shrubs in Front of the Wall: 464 Downey Jasmine, 232 Dwarf Oleander, 737 Fakahatchee, 21 Oleander = 1454 Shrubs Behind the Wall: 0

PHASE 2 EAST BUFFER

CANOPY TREES	QTY	BOTANICAL NAME	COMMON NAME	CONT	CAL	SIZE
AR	6	Acer rubrum	Red Maple	Container or RPG	3'Cal	14' x 5' spr
QV-3	11	Quercus virginiana	Live Oak	Container or RPG	3'Cal	14' x 5' spr

SHRUBS	QTY	BOTANICAL NAME	COMMON NAME	CONT	CAL	SIZE
VOB	180	Viburnum obovatum	Walter's Viburnum	3 gal, 24" Min Ht		

EAST PL BUFFER 541 LF

Required	Total Trees & Shrubs Required	Proposed
20' Buffer Width		20' Buffer Width
3 Canopy Trees / 100 lf	16 Trees	6 Red Maple 11 Live Oaks = 17
33 Shrubs / 100 lf	179 Shrubs	180 Walters Viburnum

PHASE 2 OVERALL PLANT SUMMARY INCLUDES BUFFERS

ACCENT TREES	QTY	BOTANICAL NAME	COMMON NAME	CONT	CAL	SIZE
CE	50	Conocarpus erectus	Buttonwood	Container		8' x 5' spr
IC	56	Ilex cassine	Dahoon Holly by Builder	3" cal, 10-12' oah		
SPAR	29	Juniperus chinensis 'Spartan'	Spartan Juniper	Container		12' x 5' spr
JB-10	43	Juniperus virginiana 'Brodie'	Brodie Columnar Cedar	Container or RPG		10' x 4' spr
LJ-T	51	Ligustrum japonicum	Japanese Privet	Container		8' x 7-8' spr
MYR	155	Myrica cerifera	Wax Myrtle	B & B		8'x5' spr
SP	225	Sabal palmetto	Cabbage Palmetto	B & B		10-16' ct

CANOPY TREES	QTY	BOTANICAL NAME	COMMON NAME	CONT	CAL	SIZE
AR	6	Acer rubrum	Red Maple	Container or RPG	3'Cal	14' x 5' spr
JS	78	Juniperus silicicola	Southern Red Cedar	Container or RPG	3'Cal	10-12' x 5-6' spr
MAG	141	Magnolia grandiflora 'DD Blanchard'	DD Blanchard Magnolia	Container or RPG	3'Cal	10-12' x 5' spr
QV-3	323	Quercus virginiana	Live Oak	Container or RPG	3'Cal	14' x 5' spr

EVERGREEN TREES	QTY	BOTANICAL NAME	COMMON NAME	CONT	CAL	SIZE
PE	450	Pinus ellioti	Slash Pine	Container or RPG	3'Cal	12' x 4' spr

PALM TREES	QTY	BOTANICAL NAME	COMMON NAME	CONT	CAL	SIZE
SYL	6	Phoenix sylvesteris	Sylvester Palm	B & B		8' ct

SHRUBS	QTY	BOTANICAL NAME	COMMON NAME	CONT	CAL	SIZE
DE	115	Duranta erecta 'Gold Mound'	Gold Mound Duranta	7 gal, 24" Min Ht		7 gal, 24" Min Ht
NO	21	Nerium oleander 'Calypso'	Calypso Oleander	10 gal, 48" Min Ht		
VOB	180	Viburnum obovatum	Walter's Viburnum	3 gal, 24" Min Ht		3 gal, 24" Min Ht
VO	138	Viburnum odoratissimum	Sweet Viburnum	7 gal, 36" Min Ht		7 gal, 36" Min Ht
VO-6	169	Viburnum odoratissimum	Sweet Viburnum	Cont, 5-6' oah		

SHRUB AREAS	QTY	BOTANICAL NAME	COMMON NAME	CONT	CAL	SIZE
JM	796	Jasminum multiflorum	Downey Jasmine	3 gal, 24" Min Ht		3 gal, 24" Min Ht
NOPP	341	Nerium oleander 'Petite Pink'	Petite Pink Oleander	3 gal, 24" Min Ht		3 gal, 24" Min Ht
TD	1,127	Tripsacum dactyloides	Fakahatchee Grass	3 gal, 24" Min Ht		

TREE MITIGATION REQ

1 tree / 2000 sf of Development Area 3,024,225 sf / 2,000 sf =	Total Trees Required	1,512
Total Trees Proposed	Buttonwood	50
	Dahoon Holly	56
	Red Cedars	78
	Brodie Cedars	43
	Slash Pines	450
	Wax Myrtles	155
	Sabal Palms	225
	Red Maples	6
	Magnolias	141
	Live Oaks	323
	Total	1,527

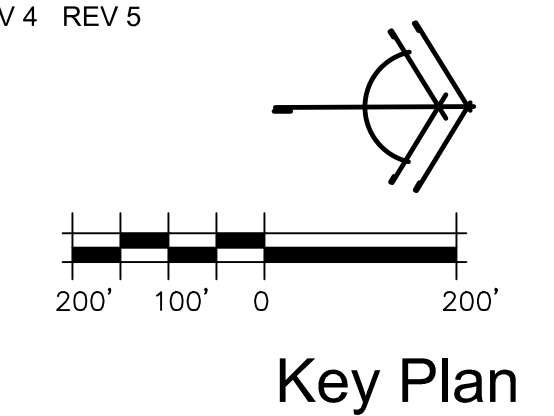
No More than 25% of the Total Mitigation Trees shall be Sabal Palm & Wax Myrtle. 225 Sabal Palm & 155 Wax Myrtle = 380 Trees or 25%

TREE REMOVAL

No clearing with heavy equipment, filling, or placement of improvements or utility lines shall occur within the protected root zone of any canopy tree to be saved, per Section 54-588 (1) (b) of Sarasota County Code. The protected root zone is defined as the dripline of the tree. Only hand clearing or mowing is permitted within the protected root zone of canopy trees to be saved if authorized by the Administrator. Where unauthorized removal of native vegetation within the protected root zone occurs the Administrator may require the replanting of understory vegetation. Full dripline protection is required, however the Administrator may allow certain activities to be conducted within the barricaded dripline of a tree, so long as the County determines that the tree will not be adversely affected.

A Tree Permit will be required prior to any construction, native vegetative removal within the dripline of a tree, and/or tree removal.

REV 1 REV 3 REV 4 REV 5



Key Plan

Copyright © 2014 by Stewart-Washmuth & Co., Inc. THESE PLANS & SPECIFICATIONS ARE THE PROPERTY OF STEWART-WASHMUTH & CO., INC. AND SHALL BE USED ONLY FOR THE PROJECT AND SITE SPECIFICALLY IDENTIFIED HEREON.

CERTIFICATE OF REGISTRATION
L.C. 00000260

Stewart-Washmuth & Co., Inc.
1916 Rain Forest Trail • Sarasota, Florida 34240
Phone: 941.377.4704 • Web: www.swwco-fl.net

Florida Board Certified No. LC-0000260

Stewart-Washmuth & Co., Inc.
Landscape Architecture

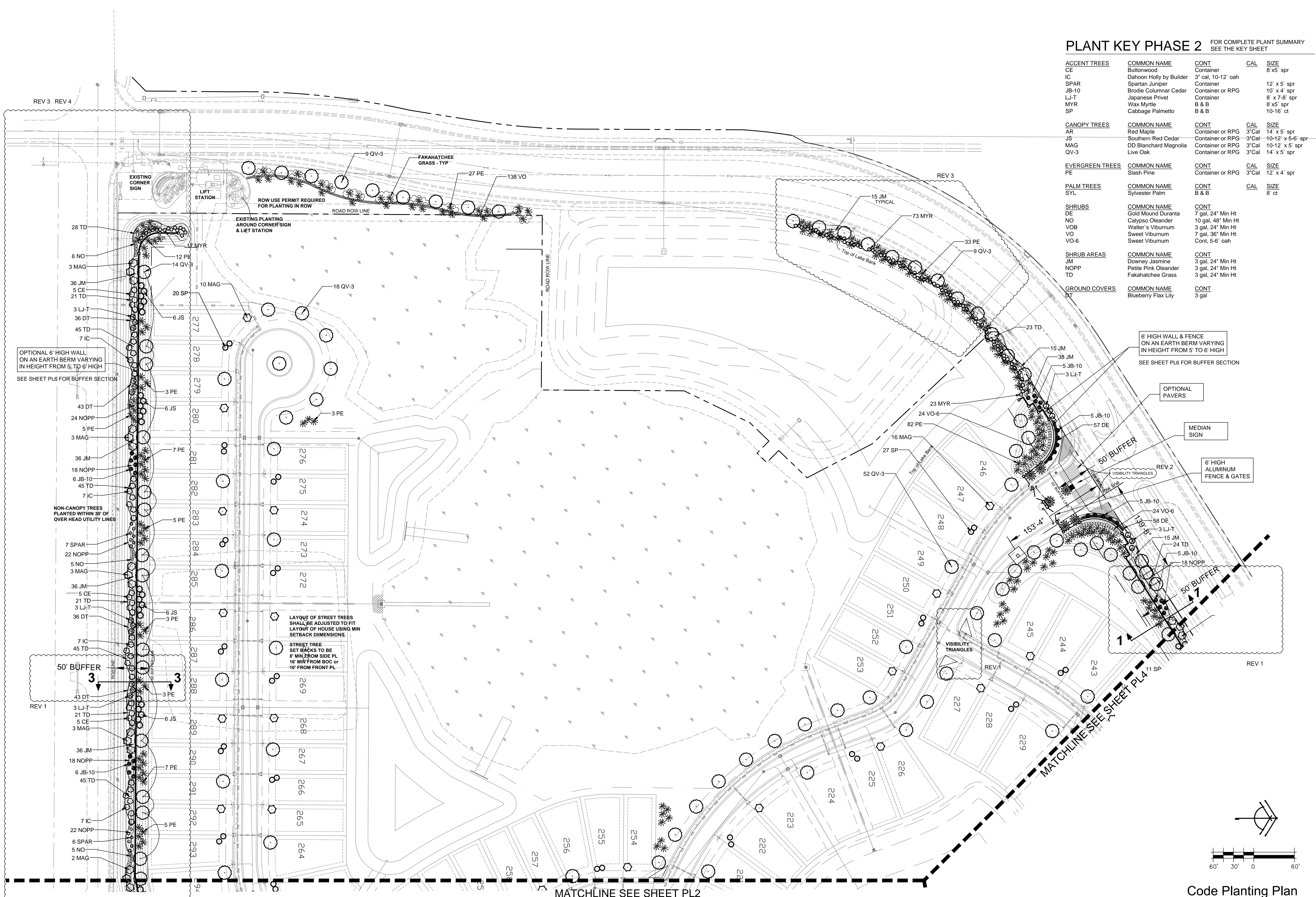
PROJECT NO. 1413
SCALE 1" = 200'
DATE 12/08/15
DRAWN BY LRW
ISSUED 02/16/16

PHASE 2
Villages of Milano
NEAL COMMUNITIES
Jacaranda Road Venice, Florida

REVISIONS

NO.	DATE	DESCRIPTION
1	04/27/15	Initial City Comments
2	04/29/15	Revisions as per City Comments
3	05/03/15	Revisions as per City Comments
4	05/13/15	Revisions as per City Comments
5	05/16/15	Revisions as per City Comments

SHEET NO. KEY



PLANT KEY PHASE 2 FOR COMPLETE PLANT SUMMARY SEE THE KEY SHEET

ACCENT TREES	COMMON NAME	CONT	CAL	SIZE
CE	Buttonwood	Container		8' x 5' spr
IC	Dahoon Holly by Builder	3" cal, 10-12" oah		12' x 5' spr
SPAR	Spartan Juniper	Container		10' x 4' spr
JB-10	Brodie Columnar Cedar	Container or RPG		8' x 7-8' spr
LJ-T	Japanese Privet	Container		8' x 5' spr
MYR	Wax Myrtle	B & B		10-16' ct
SP	Cabbage Palmetto	B & B		

CANOPY TREES	COMMON NAME	CONT	CAL	SIZE
AR	Red Maple	Container or RPG	3"Cal	14' x 5' spr
JS	Southern Red Cedar	Container or RPG	3"Cal	10-12' x 5-6' spr
MAG	DD Blanchard Magnolia	Container or RPG	3"Cal	10-12' x 5' spr
QV-3	Live Oak	Container or RPG	3"Cal	14' x 5' spr

EVERGREEN TREES	COMMON NAME	CONT	CAL	SIZE
PE	Slash Pine	Container or RPG	3"Cal	12' x 4' spr

PALM TREES	COMMON NAME	CONT	CAL	SIZE
SYL	Sylvester Palm	B & B		8' ct

SHRUBS	COMMON NAME	CONT
DE	Gold Mound Duranta	7 gal, 24" Min Ht
NO	Calypso Oleander	10 gal, 48" Min Ht
VOB	Walter's Viburnum	3 gal, 24" Min Ht
VO	Sweet Viburnum	7 gal, 36" Min Ht
VO-6	Sweet Viburnum	Cont, 5-6' oah

SHRUB AREAS	COMMON NAME	CONT
JM	Downey Jasmine	3 gal, 24" Min Ht
NOPP	Petite Pink Oleander	3 gal, 24" Min Ht
TD	Fakahatchee Grass	3 gal, 24" Min Ht

GROUND COVERS	COMMON NAME	CONT
DT	Blueberry Flax Lily	3 gal

CONSULT SHEET PL1 FOR DETAILS. STEWART & CO., INC.
 THESE PLANS & SPECIFICATIONS ARE THE PROPERTY OF
 STEWART & CO., INC. AND ARE NOT TO BE REPRODUCED
 OR COPIED IN ANY MANNER WITHOUT THE EXPRESS WRITTEN PERMISSION OF STEWART & CO., INC.
 CERTIFICATE NO. 02/16/16

Stewart-Washmuth & Co., Inc.
 1916 Rain Forest Trail • Sarasota, Florida 34240
 Phone: 941.377.4704 • Web: www.swc-co.com
 Florida Board Certified No. LC-0000260

PROJECT NO.	1413
SCALE	1" = 60'
DATE	12/08/15
DRAWN BY	LRW
ISSUED	02/16/16

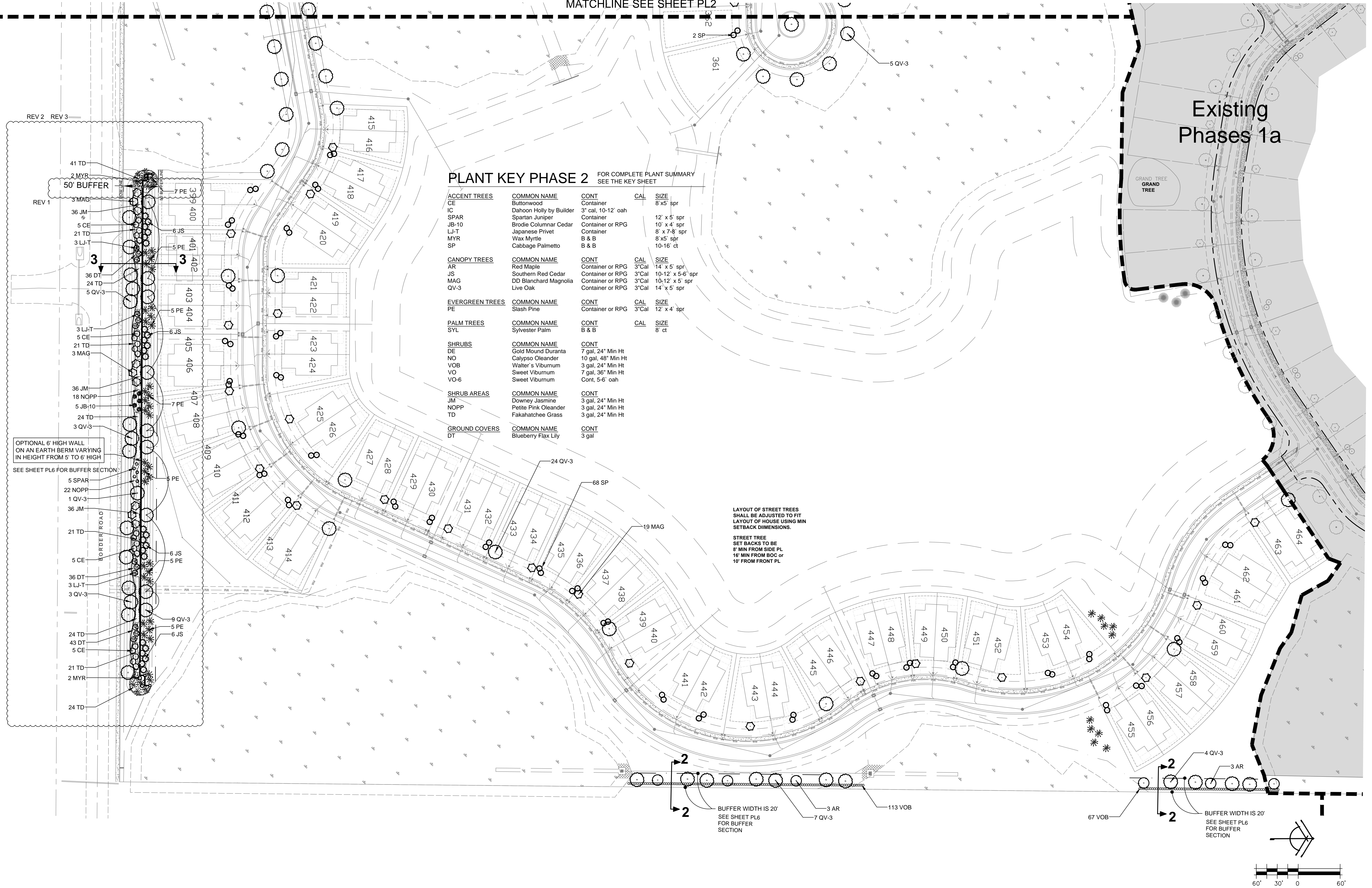
PHASE 2
Villages of Milano
NEAL COMMUNITIES
 Jacaranda Road Venice, Florida

REVISIONS	DATE	BY	REVISIONS
1	02/16/16	LRW	Revisions per City Comments
2	02/16/16	LRW	Revisions per City Comments
3	02/16/16	LRW	Revisions per City Comments
4	02/16/16	LRW	Revisions per City Comments

SHEET NO. PL 1

Code Planting Plan

MATCHLINE SEE SHEET PL2



PLANT KEY PHASE 2 FOR COMPLETE PLANT SUMMARY SEE THE KEY SHEET

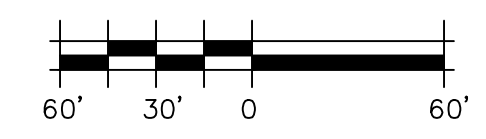
ACCENT TREES	COMMON NAME	CONT	CAL	SIZE
CE	Buttonwood	Container		8 x 5 spr
IC	Dahoon Holly by Builder	3" cal, 10-12" oah		
SPAR	Spartan Juniper	Container		12 x 5 spr
JB-10	Brodie Columnar Cedar	Container or RPG		10 x 4 spr
LJ-T	Japanese Privet	Container		8 x 7-8 spr
MYR	Wax Myrtle	B & B		8 x 5 spr
SP	Cabbage Palmetto	B & B		10-16 ct
CANOPY TREES	COMMON NAME	CONT	CAL	SIZE
AR	Red Maple	Container or RPG	3"Cal	14 x 5 spr
JS	Southern Red Cedar	Container or RPG	3"Cal	10-12 x 5-6 spr
MAG	DD Blanchard Magnolia	Container or RPG	3"Cal	10-12 x 5 spr
QV-3	Live Oak	Container or RPG	3"Cal	14 x 5 spr
EVERGREEN TREES	COMMON NAME	CONT	CAL	SIZE
PE	Slash Pine	Container or RPG	3"Cal	12 x 4 spr
PALM TREES	COMMON NAME	CONT	CAL	SIZE
SYL	Sylvester Palm	B & B		8 ct
SHRUBS	COMMON NAME	CONT	CAL	SIZE
DE	Gold Mound Duranta	7 gal, 24" Min Ht		
NO	Calypso Oleander	10 gal, 48" Min Ht		
VOB	Walter's Viburnum	3 gal, 24" Min Ht		
VO-6	Sweet Viburnum	7 gal, 36" Min Ht		
	Sweet Viburnum	Cont, 5-6' oah		
SHRUB AREAS	COMMON NAME	CONT	CAL	SIZE
JM	Downey Jasmine	3 gal, 24" Min Ht		
NOPP	Petite Pink Oleander	3 gal, 24" Min Ht		
TD	Fakahatchee Grass	3 gal, 24" Min Ht		
GROUND COVERS	COMMON NAME	CONT	CAL	SIZE
DT	Blueberry Flax Lily	3 gal		

LAYOUT OF STREET TREES SHALL BE ADJUSTED TO FIT LAYOUT OF HOUSE USING MIN SETBACK DIMENSIONS.
STREET TREE SET BACKS TO BE 8' MIN FROM SIDE PL 16' MIN FROM BOC OF 10' FROM FRONT PL

OPTIONAL 6' HIGH WALL ON AN EARTH BERM VARYING IN HEIGHT FROM 5' TO 6' HIGH
SEE SHEET PL6 FOR BUFFER SECTION

BUFFER WIDTH IS 20'
SEE SHEET PL6 FOR BUFFER SECTION

BUFFER WIDTH IS 20'
SEE SHEET PL6 FOR BUFFER SECTION



Code Planting Plan

STEWART-WASHMUTH & CO., INC.
THESE PLANS & SPECIFICATIONS ARE THE PROPERTY OF STEWART-WASHMUTH & CO., INC. AND WILL BE RETURNED TO THE COMPANY UPON THE COMPLETION OF THE PROJECT.
CERTIFICATE OF AUTHORIZATION
LIC-15-00000000

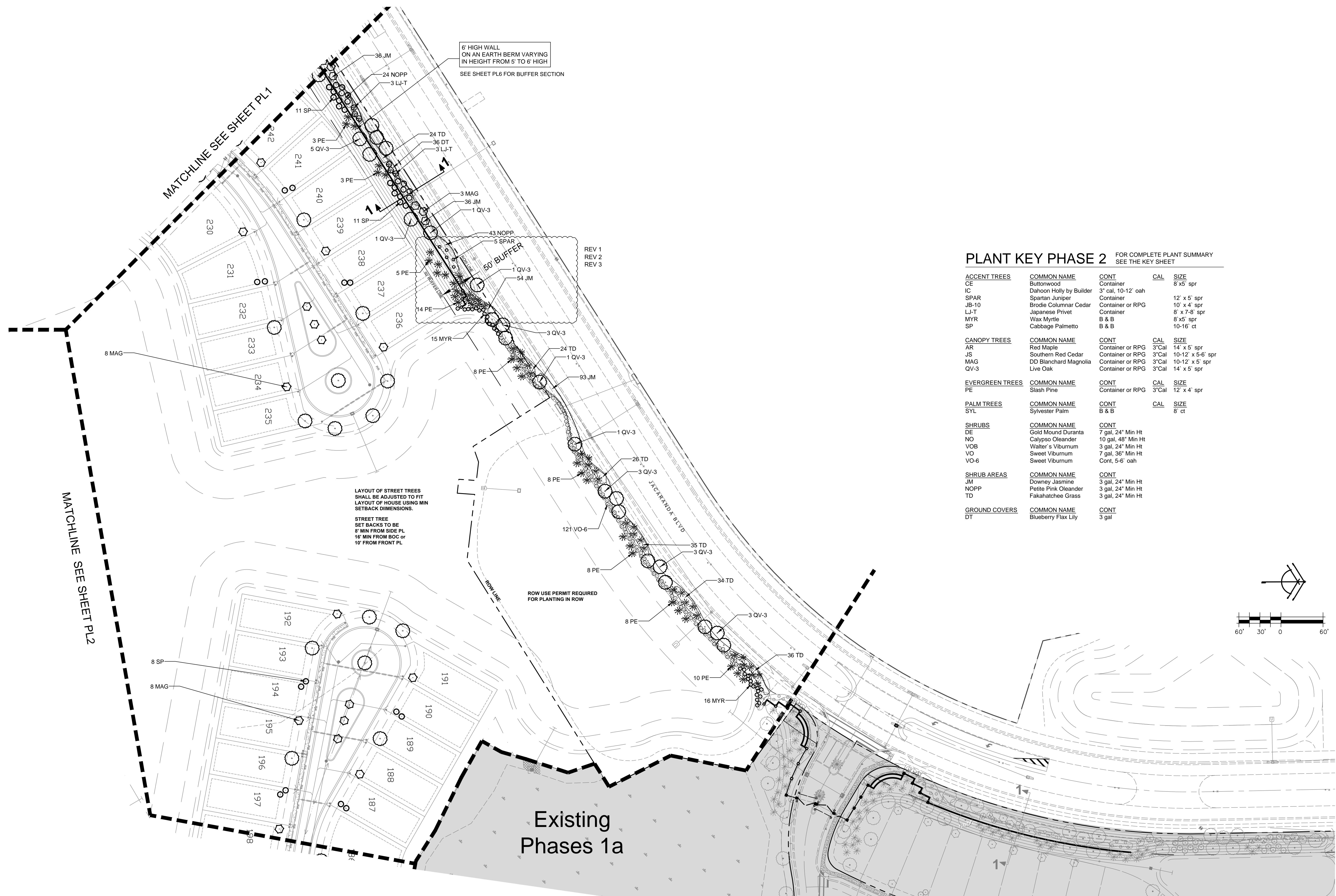
Stewart-Washmuth & Co., Inc.
1916 Rain Forest Trail • Sarasota, Florida 34240
Phone: 941.377.4704 • Web: www.swwco-la.net
Florida Board Certified No. LC00000260

PROJECT NO.	1413
SCALE	1" = 60'
DATE	12/08/15
DRAWN BY	LRW
ISSUED	02/16/16

PHASE 2
Villages of Milano
NEAL COMMUNITIES
Jacaranda Road Venice, Florida

REVISIONS	DATE	BY	DESCRIPTION
1	02/16/16	LRW	Revisions per City Comments
2	02/16/16	LRW	Revisions per City Comments
3	02/16/16	LRW	Revisions per City Comments

SHEET NO.
PL 3



6' HIGH WALL ON AN EARTH BERM VARYING IN HEIGHT FROM 5' TO 6' HIGH
SEE SHEET PL6 FOR BUFFER SECTION

LAYOUT OF STREET TREES SHALL BE ADJUSTED TO FIT LAYOUT OF HOUSE USING MIN SETBACK DIMENSIONS.
STREET TREE SET BACKS TO BE 8' MIN FROM SIDE PL 16' MIN FROM BOC or 10' FROM FRONT PL

ROW USE PERMIT REQUIRED FOR PLANTING IN ROW

Existing Phases 1a

PLANT KEY PHASE 2 FOR COMPLETE PLANT SUMMARY SEE THE KEY SHEET

ACCENT TREES	COMMON NAME	CONT	CAL	SIZE
CE	Buttonwood	Container		8' x 5' spr
IC	Dahoon Holly by Builder	3" cal, 10-12" oah		
SPAR	Spartan Juniper	Container		12' x 5' spr
JB-10	Brodie Columnar Cedar	Container or RPG		10' x 4' spr
LJ-T	Japanese Privet	Container		8' x 7-8' spr
MYR	Wax Myrtle	B & B		8' x 5' spr
SP	Cabbage Palmetto	B & B		10-16' ct
CANOPY TREES	COMMON NAME	CONT	CAL	SIZE
AR	Red Maple	Container or RPG	3" Cal	14' x 5' spr
JS	Southern Red Cedar	Container or RPG	3" Cal	10-12' x 5-6' spr
MAG	DD Blanchard Magnolia	Container or RPG	3" Cal	10-12' x 5' spr
QV-3	Live Oak	Container or RPG	3" Cal	14' x 5' spr
EVERGREEN TREES	COMMON NAME	CONT	CAL	SIZE
PE	Slash Pine	Container or RPG	3" Cal	12' x 4' spr
PALM TREES	COMMON NAME	CONT	CAL	SIZE
SYL	Sylvester Palm	B & B		8' ct
SHRUBS	COMMON NAME	CONT	CAL	SIZE
DE	Gold Mound Duranta	7 gal, 24" Min Ht		
NO	Calypso Oleander	10 gal, 48" Min Ht		
VOB	Walter's Viburnum	3 gal, 24" Min Ht		
VO	Sweet Viburnum	7 gal, 36" Min Ht		
VO-6	Sweet Viburnum	Cont, 5-6' oah		
SHRUB AREAS	COMMON NAME	CONT	CAL	SIZE
JM	Downey Jasmine	3 gal, 24" Min Ht		
NOPP	Petite Pink Oleander	3 gal, 24" Min Ht		
TD	Fakahatchee Grass	3 gal, 24" Min Ht		
GROUND COVERS	COMMON NAME	CONT	CAL	SIZE
DT	Blueberry Flax Lily	3 gal		

CONTRACTOR SHALL VERIFY NETWORK, MEASUREMENTS, & ETC. INC. THESE PLANS & SESSIONS ARE THE PROPERTY OF STEWART-WASHMUTH & CO., INC. THE CONTRACTOR SHALL BE RESPONSIBLE FOR THE CORRECT AND TIMELY SUBMISSION OF ANYTHING.

Stewart-Washmuth & Co., Inc.
1916 Rain Forest Trail • Sarasota, Florida 34240
Phone: 941.377.4704 • Web: www.svwco-la.net
Florida Board Certified No. LC0000260

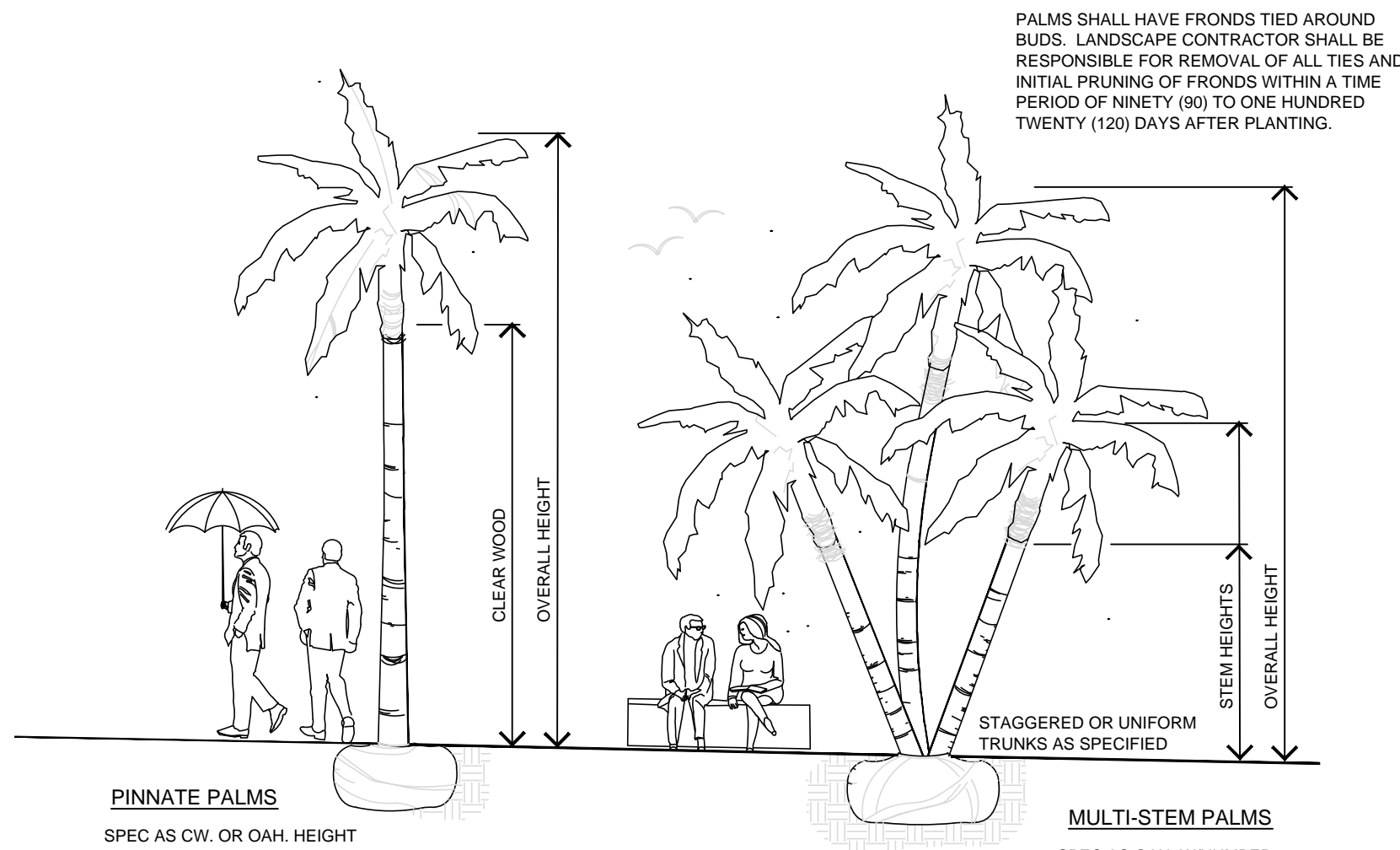
PROJECT NO.	1413-2
SCALE	1" = 60'
DATE	12/08/15
DRAWN BY	LRW
ISSUED	02/16/16

PHASE 2
Villages of Milano
NEAL COMMUNITIES
Jacaranda Road Venice, Florida

REVISIONS	DATE	BY	DESCRIPTION
1	02/16/16	LRW	Revisions per City Comments
2	02/16/16	LRW	Revisions per City Comments
3	02/16/16	LRW	Revisions per City Comments

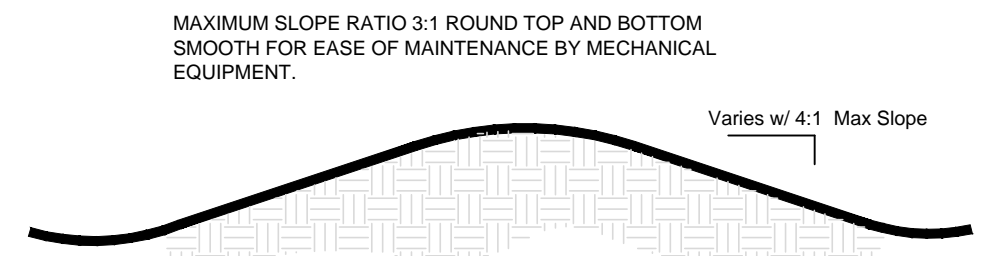
SHEET NO. PL 4

Code Planting Plan



PALM SIZING SPECIFICATIONS

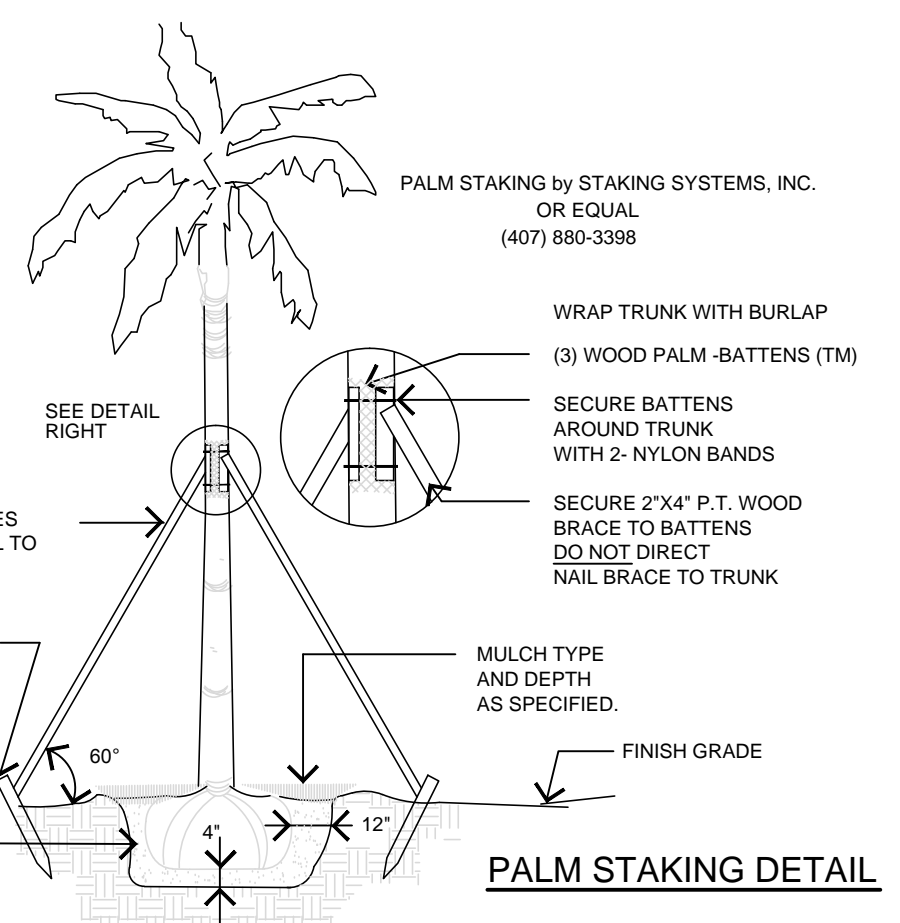
NOT TO SCALE



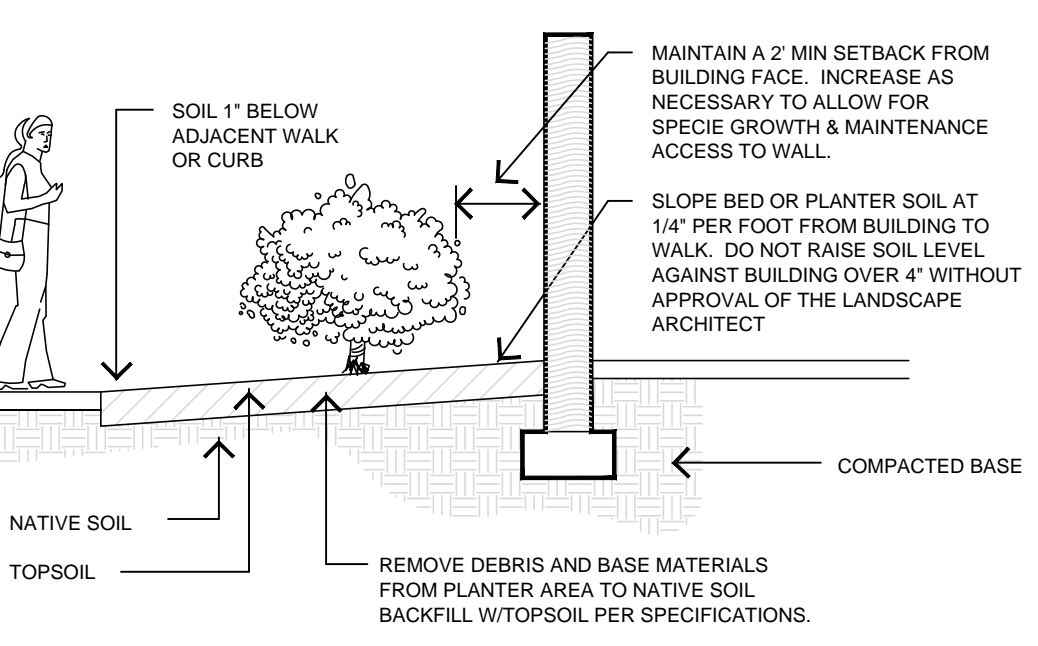
ALL BERM AREAS SHALL RECEIVE CLEAN TOP SOIL IN QUANTITIES AS INDICATED ON THE PLANS. GRADE WITH A MAXIMUM 3:1 SIDE SLOPE (UNLESS OTHERWISE SPECIFIED) TO MEET SHAPES INDICATED BY CONTOUR LINES. CONTOUR LINES SHOWN INDICATE A 1'-0" CONTOUR INTERVAL AND DO NOT REFLECT ACTUAL SITE GRADES.

EARTH BERM DETAIL

NOT TO SCALE

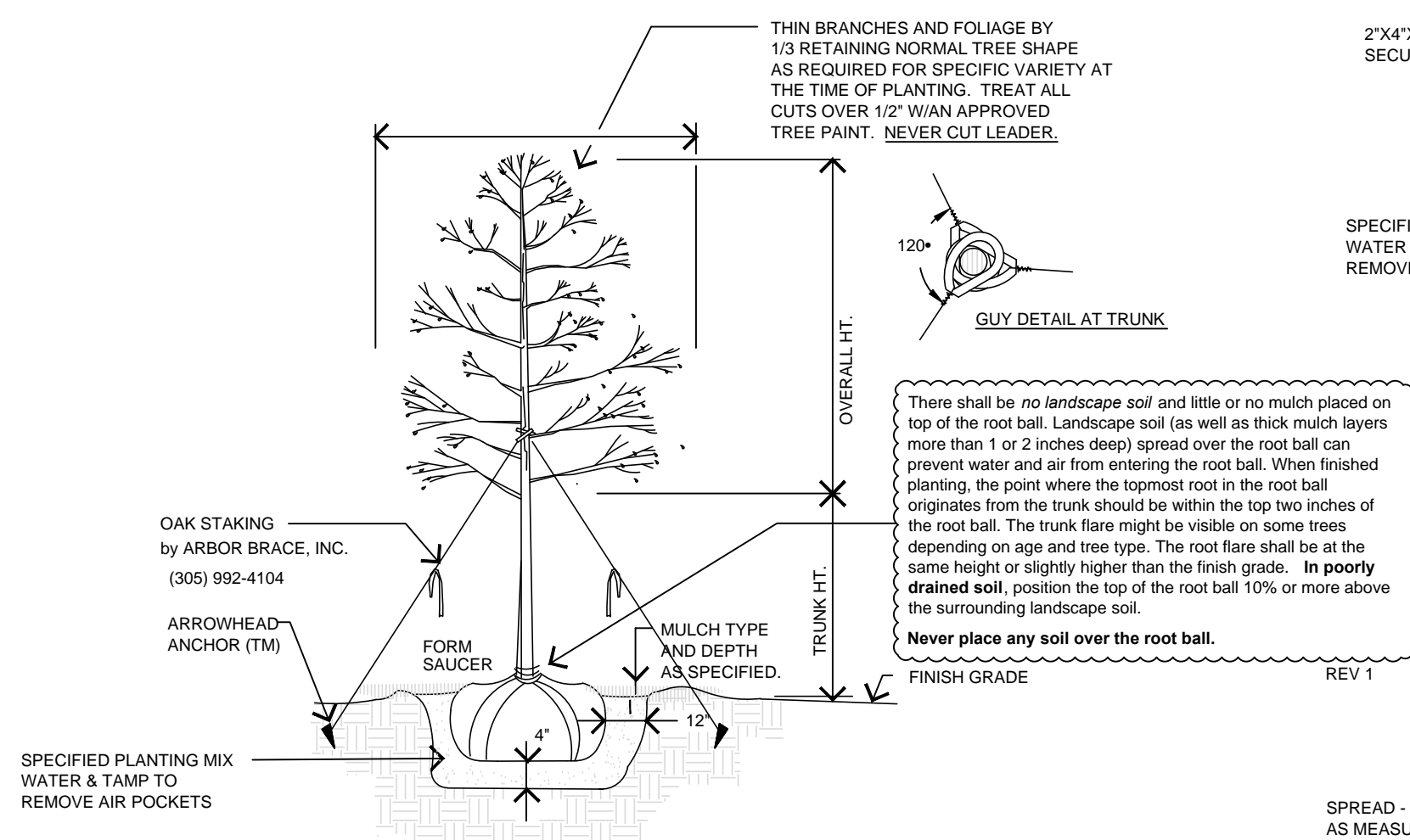


PALM STAKING DETAIL

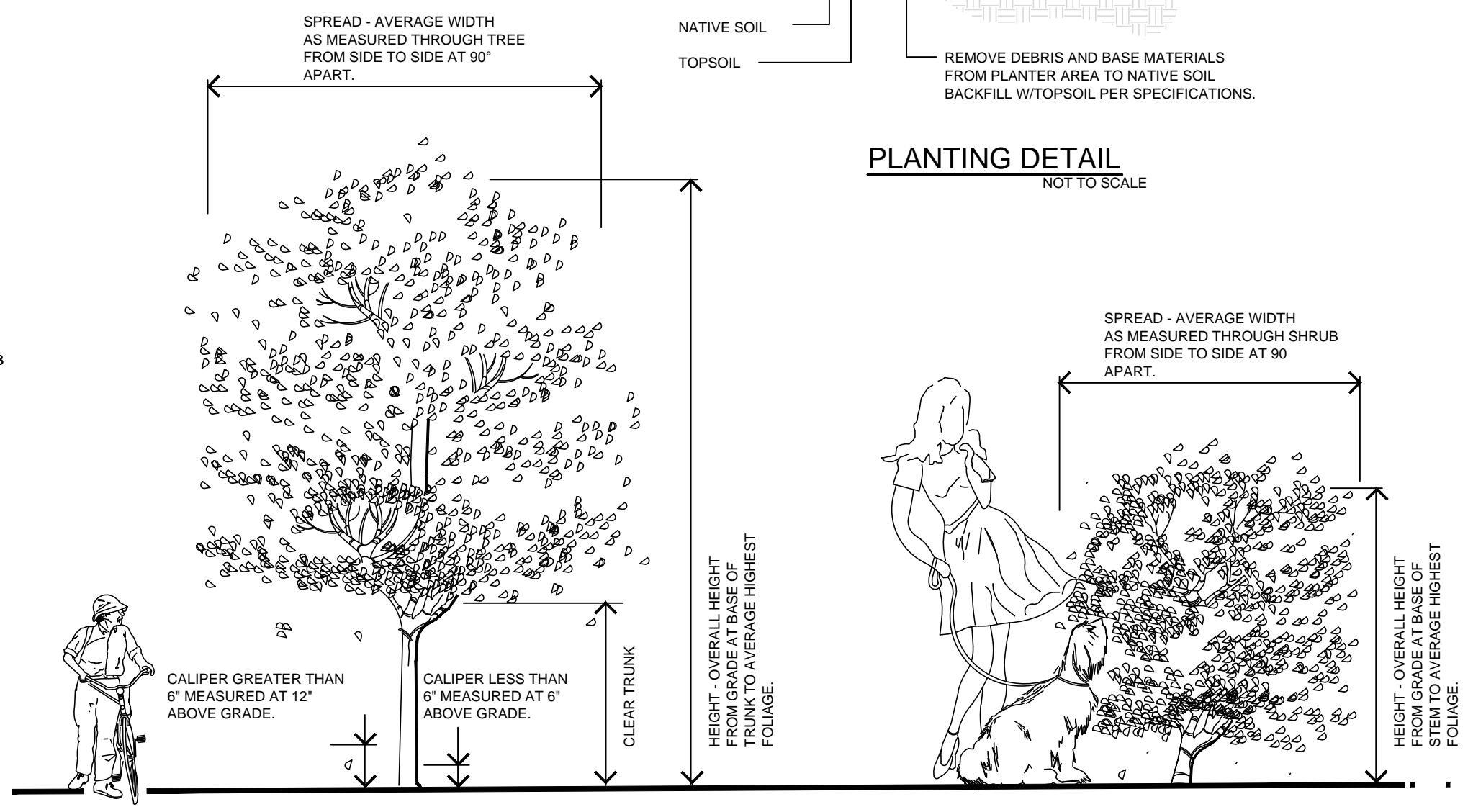


SLOPED SURFACE PLANTING DETAIL

NOT TO SCALE



TREE PLANTING, STAKING & PRUNING



PLANTING DETAIL

NOT TO SCALE

TREE & SHRUB SIZING SPECIFICATION

SOIL PREPARATION AND PLANTING MIX

1. Prior to installation, the landscape contractor shall determine the adequacy of the existing soil for sustaining plants. The contractor shall provide soil samples taken from 5 to 6 locations on the site mixed together and sent to an approved laboratory for analysis of pH, fertility and composition. Recommendations for deficiencies shall be determined by the landscape contractor.
2. Prior to installation, the landscape contractor shall determine the adequacy of the soil for drainage and percolation. A shovel width hole 36" deep shall be dug in appropriate planting bed locations, filled with water and monitored for a percolation rate. Inadequate percolation shall be reported to the landscape architect or owner for correction. The landscape contractor shall be responsible for replacement of all plants due to inadequate drainage conditions if poor conditions are not reported.
3. All existing turf and weed areas shall be treated with Round-up herbicide as necessary to eliminate all turf and weeds. A minimum of two (2) applications are required - an initial application and a second application 7 to 10 days later. Apply as per manufacturer's recommendations. Areas shall be mechanically scraped to remove dead foliage and litter. All debris shall be removed from the site.
4. All Herbicide and pesticides shall be applied by a licensed applicator as per state and other codes.
5. All earth and fill operations shall be brought within 1/10 of a foot of finished grade by others. The landscape contractor shall be required to adjust finished grades where necessary to meet walks, pavements, drives, etc. at proper elevation for sod and mulching operations.
6. Finish grade to be a smooth even surface assuring positive drainage away from structures. Eliminate any low areas which may collect water.
7. Amend backfill of all shrubs and groundcovers with 1/3 clean Florida Peat or approved planting mix. Mix organic soil amendments thoroughly with the native soil before backfilling planting pits.

FERTILIZATION

1. Contractor shall correct pH as necessary as determined from required Soil Samples.
2. Contractor shall determine the fertilization needs based on the results of the soil tests. Appropriate rates of a slow release fertilizer meeting the local ordinances shall be applied to all trees, palms, shrubs and groundcovers.
3. Cost of fertilization shall be included in the initial cost of the plant material.
4. Fertilizer application shall be consistent with Chapter 54, Article XXXII (Fertilizer and Landscape Management) of the Sarasota County Code.

PLANTING NOTES

1. The contractor shall refer to the landscape planting details, Plant List and, General Notes for complete landscape planting instructions.
2. Installation of all work shall be coordinated with other contractors on the site in such a manner as to allow for a speedy and orderly completion of all work on the site. The landscape contractor shall closely coordinate with the irrigation contractor.
3. Contractors are cautioned to be aware of underground utilities. Prior to excavation, the contractor shall check with the job site superintendent and utility companies for a location of all utilities.
4. Any conditions found contrary to the plans shall be reported to the Landscape Architect for resolution along with a suggested course of action prior to altering the design solution presented in the plans.
5. Prior to the installation of an operable irrigation system, the contractor shall be responsible for the hand watering of all tree, palms, shrubs and groundcovers that may be installed. Watering shall be a min of five (5) times per week and of sufficient quantity to guarantee the maintenance of plant material quality until such time as an operable irrigation system is available.
6. It is the responsibility of the landscape contractor to assure that the plantings are receiving proper irrigation prior to the acceptance of the project by the owner. The landscape contractor shall coordinate with the irrigation contractor to adjust the system if too little or too much water is being applied.
7. The landscape contractor shall be responsible for the replacement of plant material experiencing transplant shock due to the lack of water at any time during the planting operation.
8. Mark out the locations of all planting beds and tree locations prior to the installation of the irrigation system so as to facilitate the layout of the irrigation system and tree bubblers.
9. Plant material shall be Florida No 1, or better quality as per "Grades and Standards for Nursery Plants", Florida Dept. of Agriculture and Consumer Affairs, or shall match quality standards as previously established by the Landscape Architect through the tagging of representative samples.
10. All plant material shall either be sun or shade grown, as appropriate for the conditions on the site where the material is to be planted.
11. All plant material shall be protected during transport and delivery to the job site with shade cloth or other acceptable means of windburn protection.
12. The plant count quantities in the Plant List are for the convenience of the Landscape Contractor. Contractors shall verify all plant counts with the specified quantities on the landscape plans. The landscape contractor is responsible for all materials drawn n the plan.
13. At his discretion, the landscape architect may require plants to be set in place and approved prior to installation. The landscape contractor shall call to schedule the inspection four (4) working days in advance.
14. Typically, shrub and groundcover plantings are shown on plans as a mass planting bed. Plants shall be placed on a triangular spacing configuration with staggered spacing. Plant center to center spacing (o.c.) are listed in the Plant List.
15. Trees grown in Grow Bags or grow bag type of materials must have the grow bag material completely removed prior to planting.
16. Balled and burlapped material shall have the top one half (1/2) of the burlap around the base of the trunk cut and pulled back. Do not remove burlap. Wire Cages, straps, etc. must be cut and removed prior to installation.
17. Trees shall be staked by means of an Arborbrace Tree Guying System.
18. The landscape contractor shall mulch all plant beds with a clean, weed free mulch of a type and of a depth as noted in the plant list. All free standing trees shall have a minimum of a 5' diameter mulch circle extending past the outside of the the planting pit saucer. Do not mulch annual beds.
19. Sod shall be by owner.
20. The contractor shall guarantee all plant material for a period of one year following the date of substantial completion.
21. The contractor shall request an inspection of the project. If all work is complete and satisfactory in accordance with the contract documents, then the installation shall be considered substantially complete. Substantial completion shall constitute the beginning of the guarantee period.
22. The landscape contractor shall provide the owner a complete maintenance program to be followed during and after the warranty period. During the warranty period, the landscape contractor shall not be held responsible for theft, vandalism or unusual acts of God.
23. All plant material shall be Florida #1 or better quality at time of planting and shall be maintained in this same condition until final acceptance. Decline in condition and quality prior to acceptance shall be grounds for rejection and replacement.
24. Removal of all staking and guy wires shall be the responsibility of the owner after plant establishment. The landscape contractor must agree to removal if done within the warranty period.

IRRIGATION NOTES

Irrigation Plans shall be prepared.
 The system shall be fully automatic and provide coverage of the planted site in adherence to the Water Efficient Landscape Ordinance.
 The Irrigation System shall provide:
 1. Rain Sensor Gauge
 2. Separate Zones to irrigate Turf and shrubs.
 3. Connection to the developer's well water source
 The programming of the system shall take into consideration slow percolating soils.

INVESTIGATE BEFORE YOU EXCAVATE
"CALL SUNSHINE"
 1-800-432-4770
 TOLL FREE
 FL. STATUTE 553.851 (1979) REQUIRES MIN. OF 2 DAYS AND MAX. OF 5 DAYS NOTICE BEFORE YOU EXCAVATE.

CREATED BY: STEWART-WASHMUTH & CO., INC. THESE PLANS & SPECIFICATIONS ARE THE PROPERTY OF STEWART-WASHMUTH & CO., INC. WITHOUT THE EXPRESS WRITTEN PERMISSION OF SWCO.

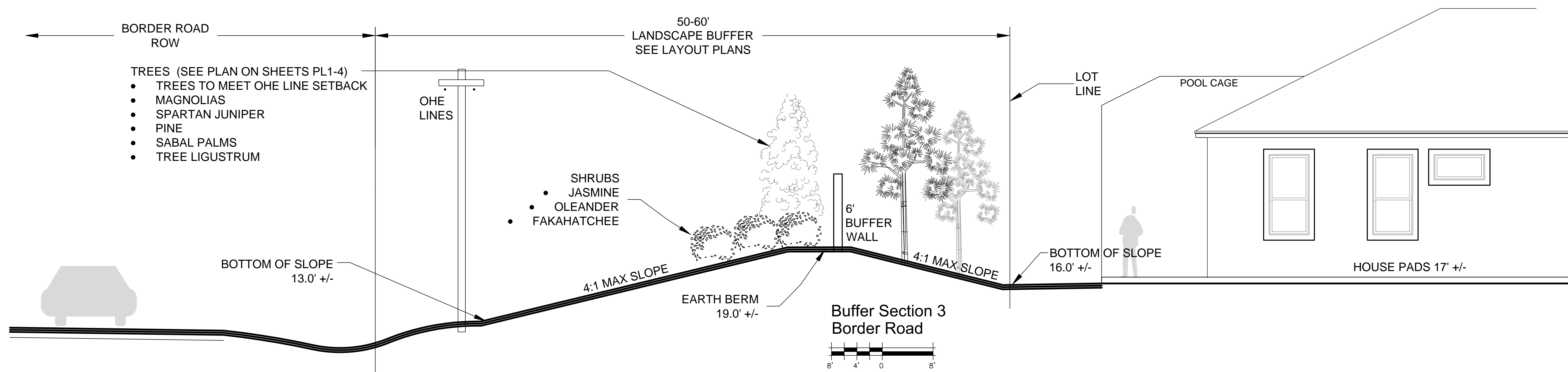
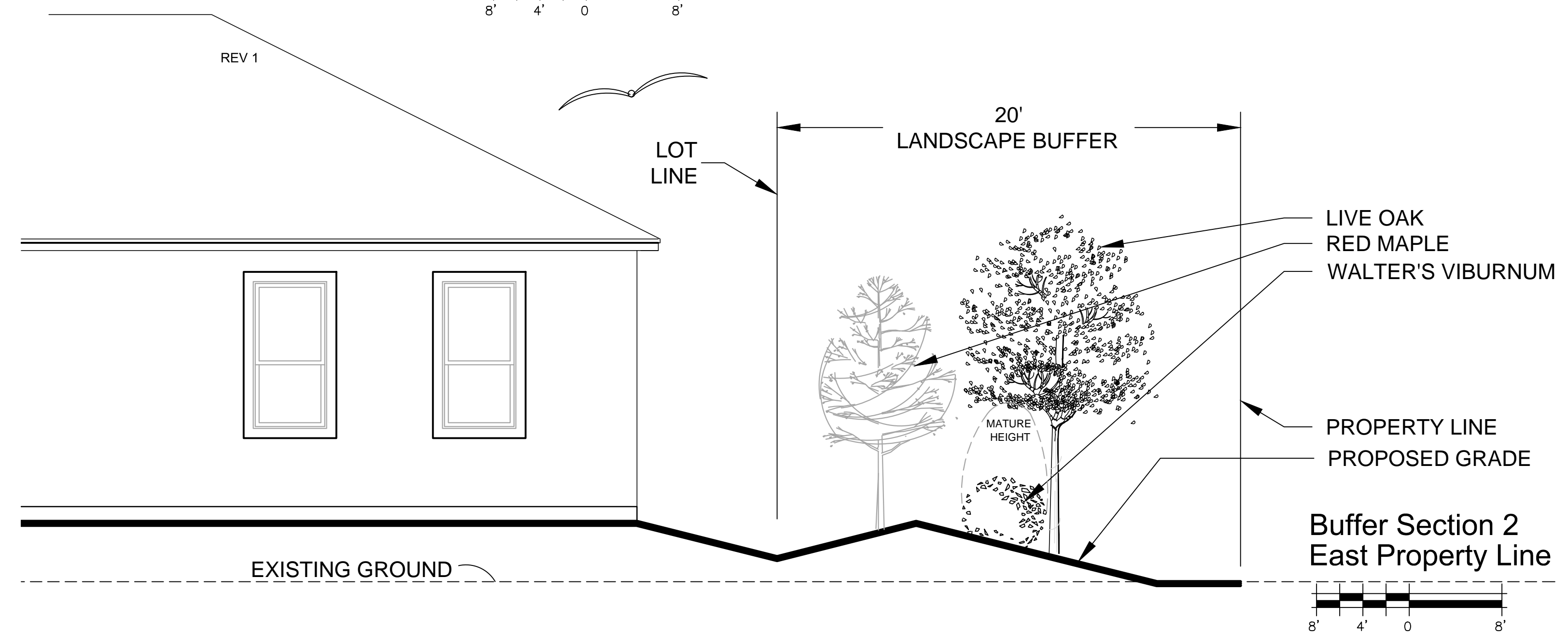
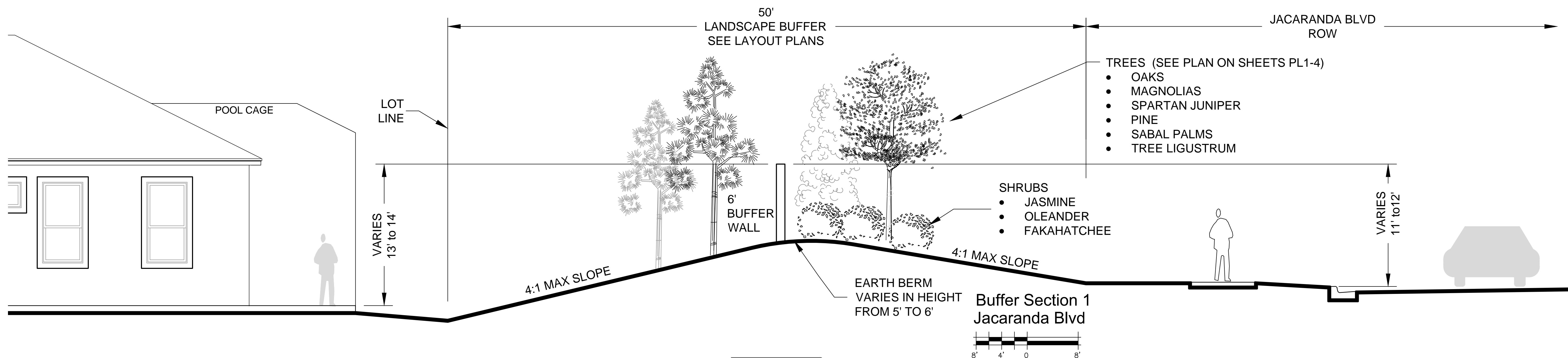
Stewart-Washmuth & Co., Inc.
 1916 Rain Forest Trail • Sarasota, Florida 34240
 Phone: 941.377.4704 • Web: www.swco-la.net
 Florida Board Certified No. LC0000260

PROJECT NO.	1419-2
SCALE	As Shown
DATE	12/08/15
DRAWN BY	LRW
ISSUED	02/16/16

PHASE 2
Villages of Milano
NEAL COMMUNITIES
 Jacaranda Road Venice, Florida

REVISIONS	REVISIONS as per City Comments
1	04/07/16

SHEET NO. **PL 5**



DESIGNED BY STEWART-WASHMUTH & CO., INC.
 THESE PLANS & SPECIFICATIONS ARE THE PROPERTY OF STEWART-WASHMUTH & CO., INC. AND ARE NOT TO BE REPRODUCED OR TRANSMITTED IN ANY FORM OR BY ANY MEANS, ELECTRONIC OR MECHANICAL, INCLUDING PHOTOCOPYING, RECORDING, OR BY ANY INFORMATION STORAGE AND RETRIEVAL SYSTEM, WITHOUT THE EXPRESS WRITTEN PERMISSION OF STEWART-WASHMUTH & CO., INC.
 CERTIFICATE OF REGISTRATION
 LC-0000260

Stewart-Washmuth & Co., Inc.
 1916 Rain Forest Trail • Sarasota, Florida 34240
 Phone: 941.377.4704 • Web: www.svwco-la.net
 Florida Board Certified No. LC-0000260

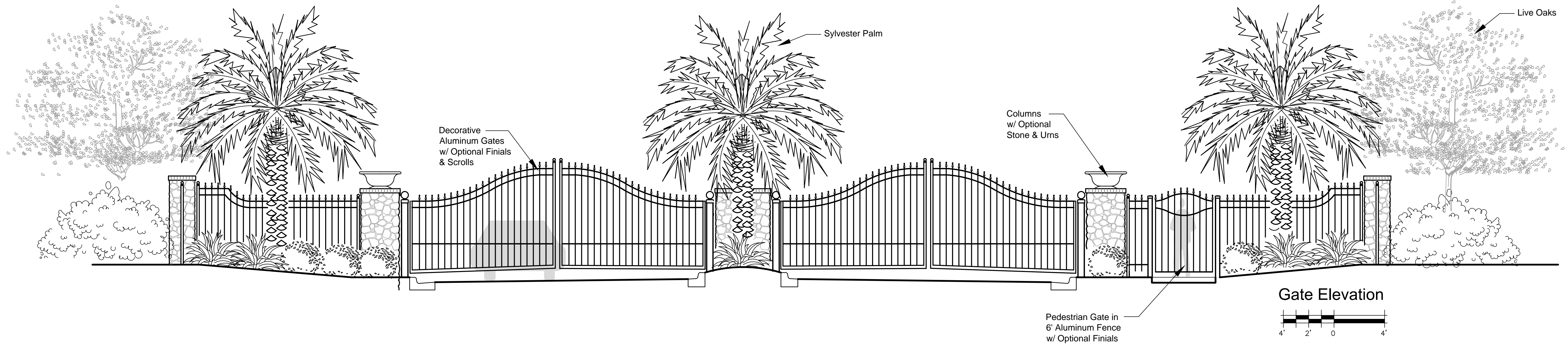
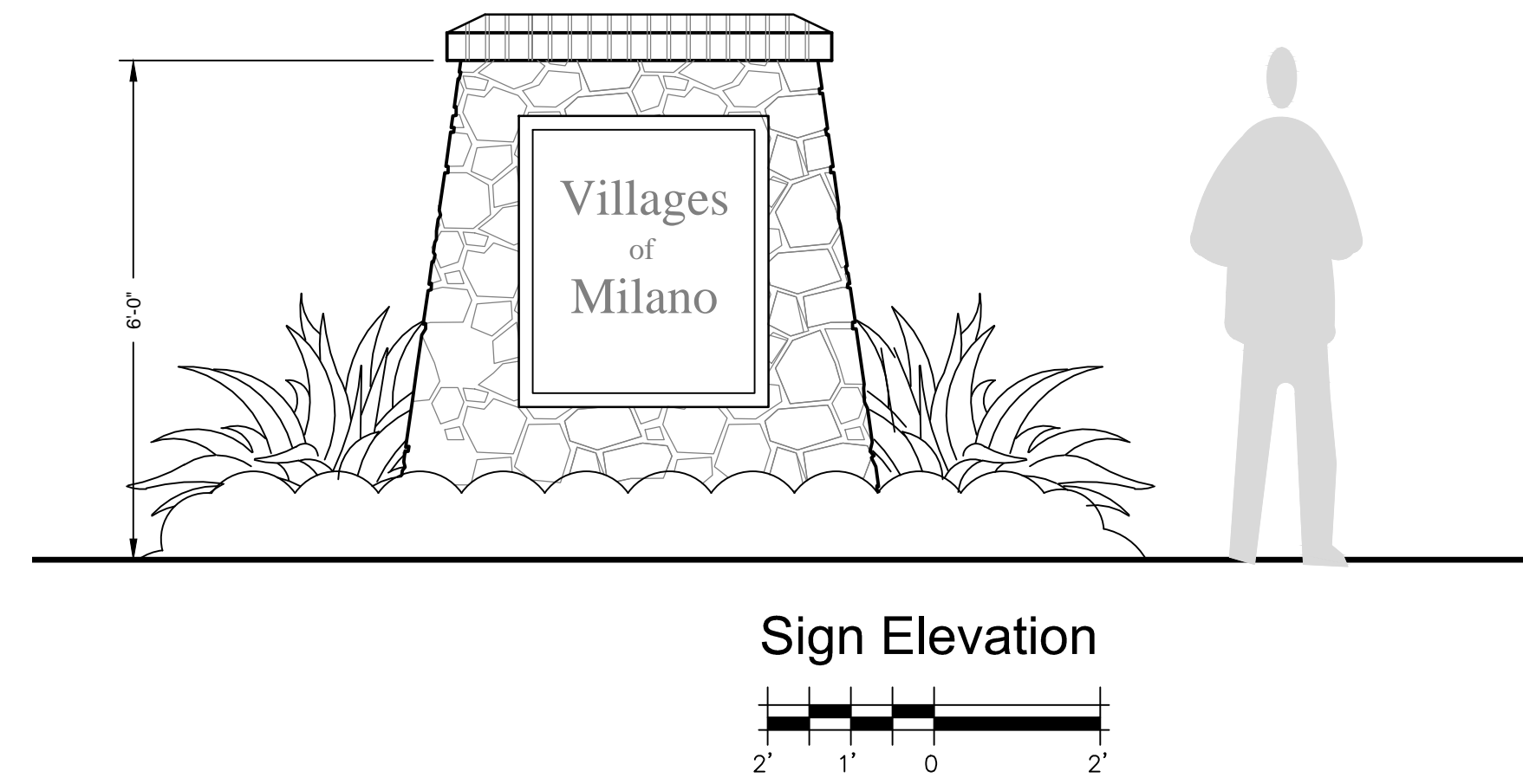
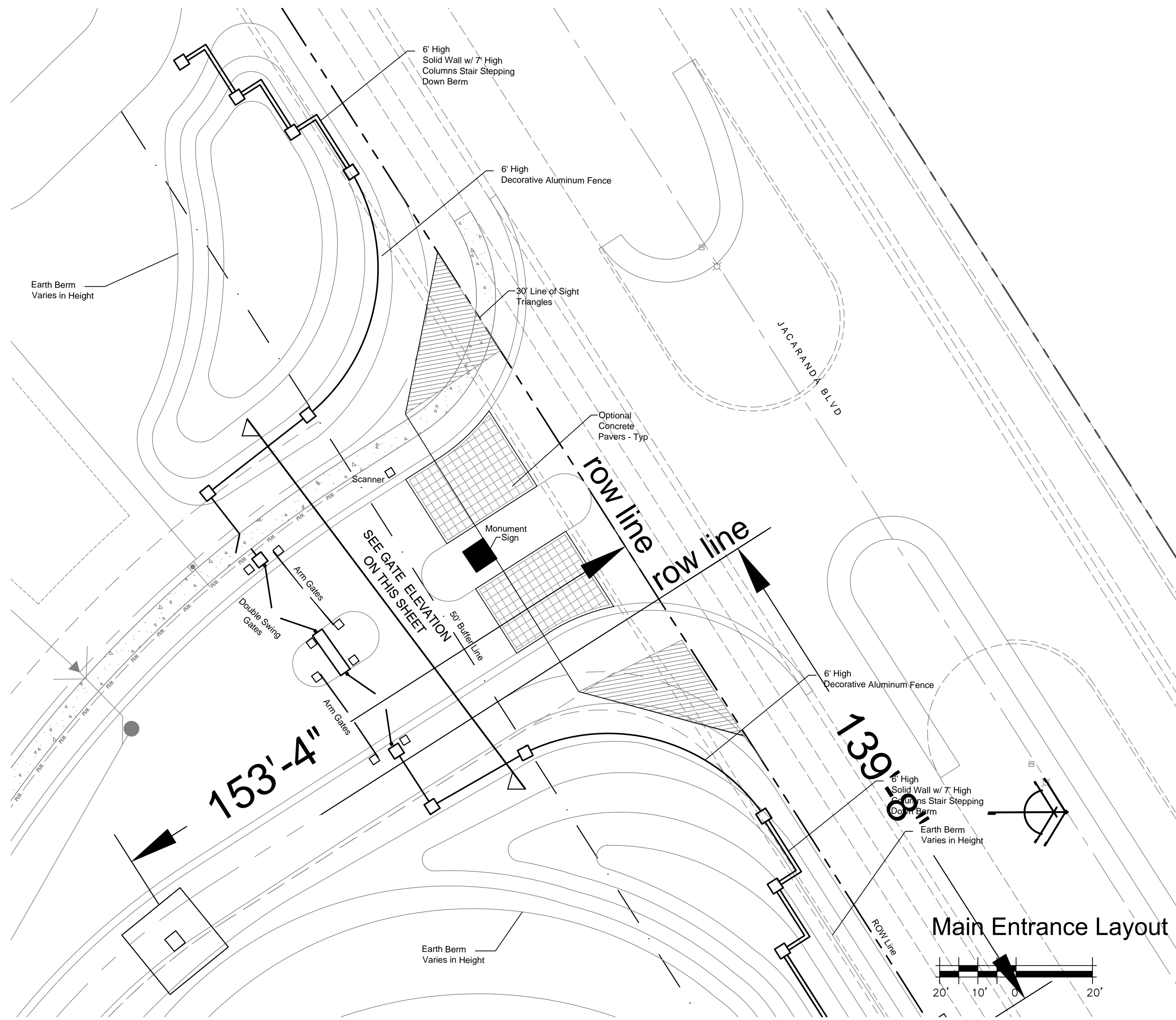
PROJECT NO.	1413
SCALE	As Shown
DATE	12/08/15
DRAWN BY	LRW
ISSUED	02/16/16

PHASE 2
Villages of Milano
 NEAL COMMUNITIES
 Jacaranda Road Venice, Florida

REVISIONS	REVISIONS per City Comments
1	04/07/16

SHEET NO.
 PL 6

Buffer Sections



Main Entrance

CONTRACT SHEET BY STEWART-WASHMUTH & CO., INC.
 THESE PLANS & SPECIFICATIONS ARE THE PROPERTY OF
 STEWART-WASHMUTH & CO., INC. AND ARE NOT TO BE
 REPRODUCED OR TRANSMITTED IN ANY FORM OR BY
 ANY MEANS, ELECTRONIC OR MECHANICAL, WITHOUT
 THE EXPRESS WRITTEN PERMISSION OF SWCO.

CERTIFICATE OF REGISTRATION
 LC-0000260

Stewart-Washmuth & Co., Inc.
 1916 Rain Forest Trail • Sarasota, Florida 34240
 Phone: 941.377.4704 • Web: www.swco-la.net

Stewart-Washmuth & Co., Inc.
 1916 Rain Forest Trail • Sarasota, Florida 34240
 Phone: 941.377.4704 • Web: www.swco-la.net

Florida Board Certified No. LC-0000260

PROJECT NO.	1413
SCALE	As Shown
DATE	12/09/15
DRAWN BY	LRW
ISSUED	02/16/16

PHASE 2
Villages of Milano
 NEAL COMMUNITIES
 Jacaranda Road Venice, Florida

REVISIONS	REVISIONS as per City Comments
1	02/03/16

SHEET NO.
 LO 1