

# Downtown Update Sight Distance Issues



Kathleen Weeden, PE  
City Engineer

07/11/2017





# Current Project Schedule

- 60% Plans Underway (Scheduled to be complete Aug.)
- Plan to bid by January 2018
- Construction Scheduled to start April 15, 2018
- Meeting held with all Special Events to Coordinate Alternate Locations for Summer/Fall 2018
- Meeting to be held with Downtown Merchants upon Completion of 60% Plans (Sept./Oct. 2017)
- Stormwater Design/Utility Coordination/Lighting Replacement Underway



# Tampa – Nassau Intersection



Increase Curb Bulb-out – No Loss of Parking

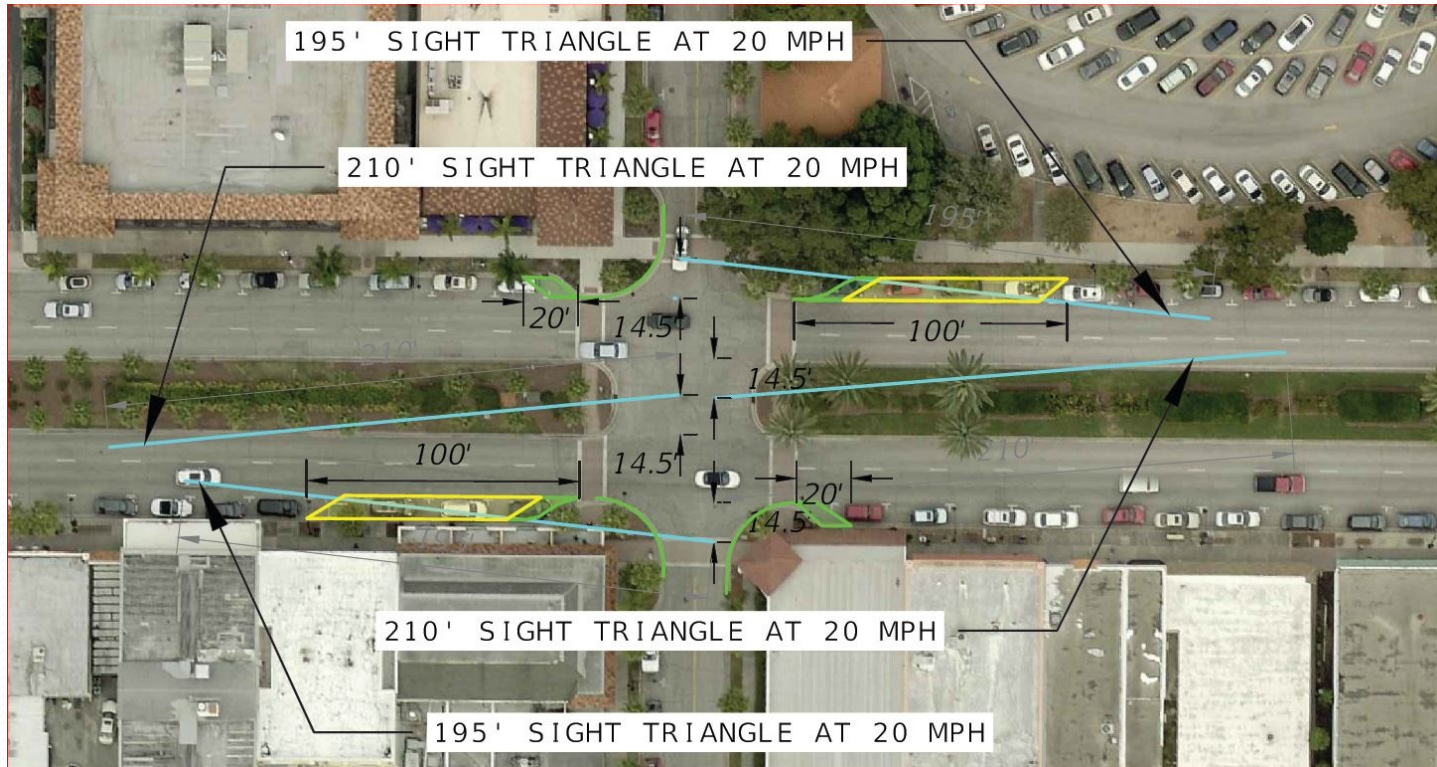


# Tampa – Nokomis Intersection



- Evaluating Possible Configuration Improvement
- No Loss of Parking
- Initial Analysis May Allow Addition of Stop Sign

# Venice Ave – Nassau Intersection



## PROPOSED LEGEND

CURBS/  
LANDSCAPE



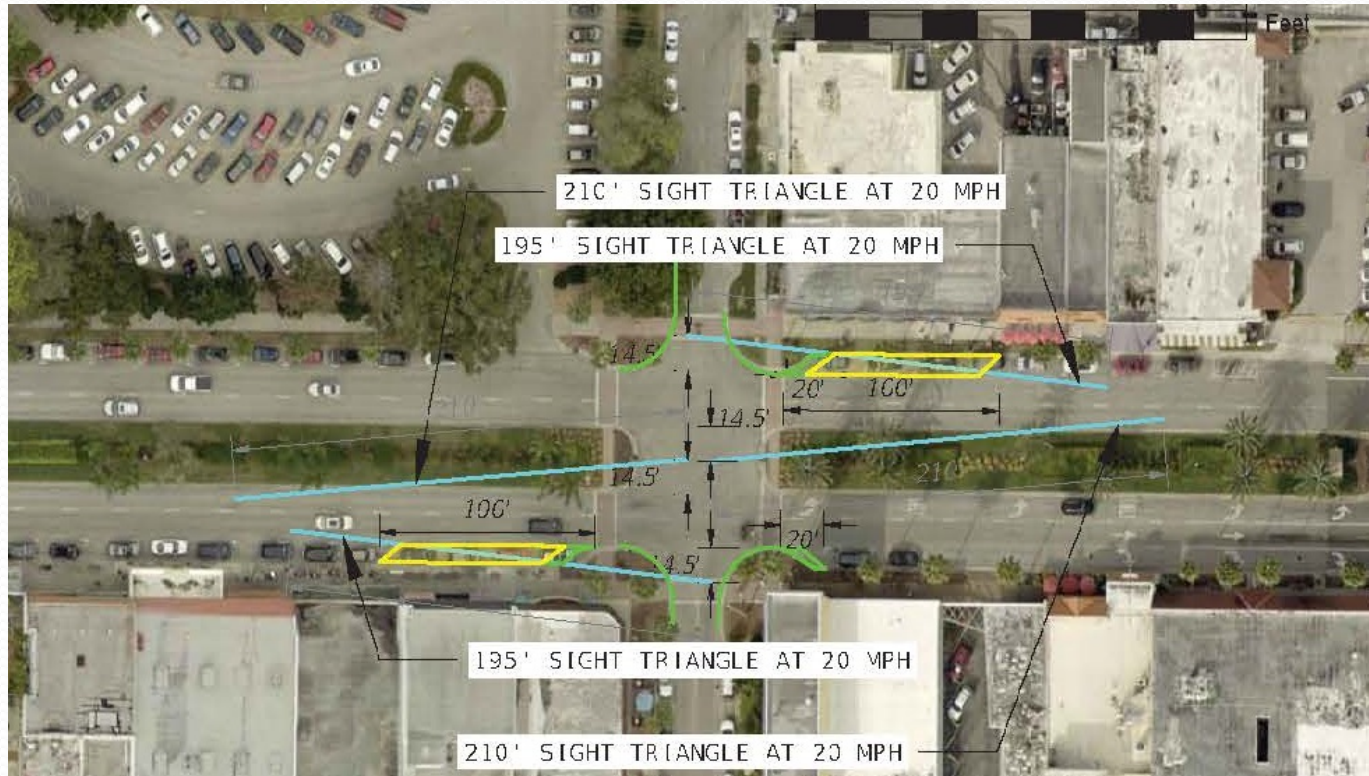
STRIPES



- Increase Curb Bulb-out
- Loss of 6 Parking Spaces
- Consider Adding Bike Corral/Landscaping
- With Stop Sign – only curb required



# Venice Ave – Nokomis Intersection



## PROPOSED LEGEND

CURBS/  
LANDSCAPE



STRIPES



- Increase Curb Bulb-out
- Loss of 8 Parking Spaces
- Consider Adding Bike Corral/Landscaping
- Initial Analysis May Allow Addition of Stop Sign
- With Stop Sign – only curb required



# Miami – Nassau Intersection



## PROPOSED LEGEND

CURBS/  
LANDSCAPE

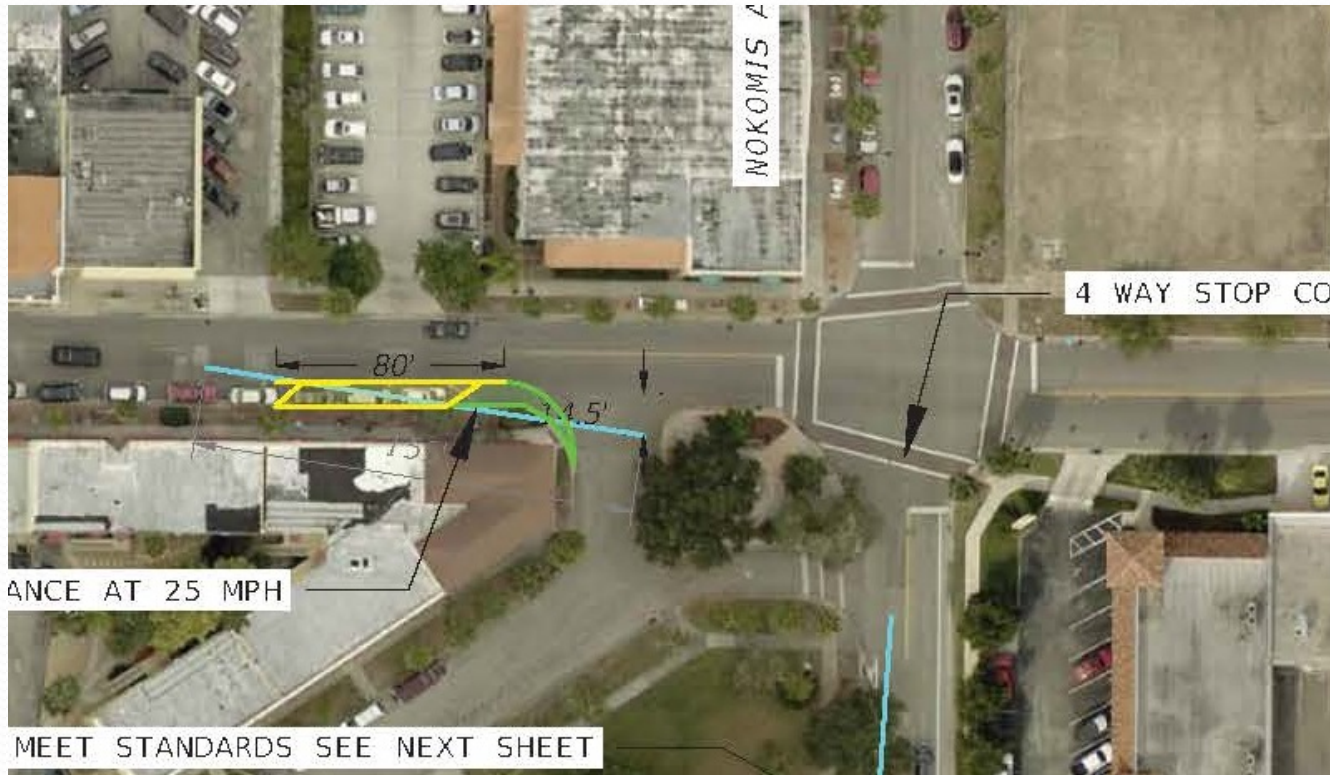


STRIPES



- Increase Curb Bulb-out
- Loss of 1 Parking Space @ Intersection plus 1 Parking Space at Mid-block Crossing
- Consider Adding Bike Corral/Landscaping
- No Alternative to Parking Loss Identified

# Miami – Ponce De Leon Intersection



## PROPOSED LEGEND

CURBS/  
LANDSCAPE



STRIPES



- Increase Curb Bulb-out
- Loss of 3 Parking Spaces
- Consider Adding Bike Corral/Landscaping
- If Lower Speed Limit to 20 mph could reduce loss 1 space – needs further evaluation



# Requested Council:

- Direction on whether to proceed with consideration of stop signs and required additional analysis?
- Direction on whether to conduct additional analysis regarding reduction of speed limit on W. Miami Avenue?

**NOTE:** FDOT Safety Standards Must Be Met and Additional Restrictions Could be Required During 60% Plan Review by FDOT.

Questions?