

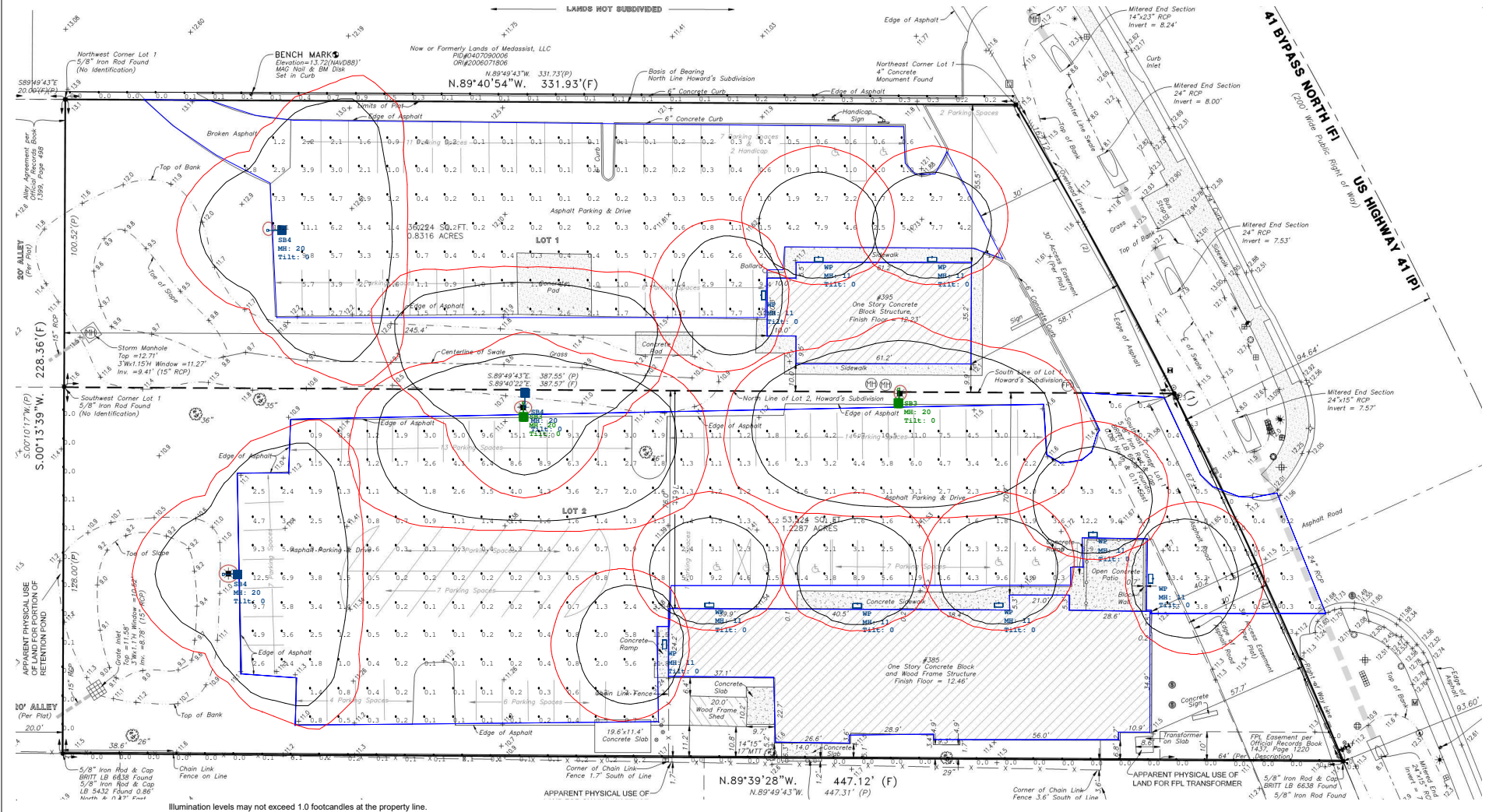


SYNERGY LIGHTING

"The Nation's #1 Source For Lighting and Service"

LEADING THE WAY IN LED

LED LIGHTING PLAN



Synergy Lighting, Inc. www.SynergyLightingUSA.com

877-220-5483 sales@synergylightingusa.com

Project Name: Project_1

MRT ACE SITE CALC REVISED 121324.AGI

AGi32 Version 16.8.4

12/13/2024

Page 3 of 6

DISCLAIMER: Calculations have been performed according to IESNA & CIE standards and good practice. Some differences between measured values and calculated results may occur due to tolerances in calculation methods, testing procedures, component performance, measurement techniques and field conditions such as voltage and temperature variations, input data used to generate the simulated calculations such as room dimensions, reflectances, furniture and architectural elements, etc. If the real environment conditions do not match the input data, differences will occur between measured values and calculated values.



LED HIGH OUTPUT AREA LIGHT



Job Name

MRT ACE PARKING LOT

Catalog Number

ALCK-145W-T3-UNV-50K-BRZ-AA

Specified By

RICHARD RACEY

Notes

TYPE SB3

The ALCK Series LED Area Lights bring together modern form and a simple (over engineered) design to compliment any architecturally designed property to provide area lighting uniformly throughout a parking lot or auto dealership. With its light weight construction and mounting versatility, the ALCK Area Light mounts to any type of light pole.

FEATURES

- Modern form factor with cast aluminum housing
- Stainless steel hardware
- Advanced thermal management integral heat sinks
- Lumileds High Performance Diodes
- Integral Inventronics Drivers
- Premium - Corrosion resistant polymer powder coat
- Quick and easy installation
- 100,000 Hour Life with 5 Year Factory Warranty
- Available in: Bronze or Black Finish
- CCT: 4000K or 5000K
- UL Listed For Wet Locations

APPLICATIONS

- Parking Lot Lighting
- Automotive Dealerships
- High Mast Lighting
- Shopping Centers
- Hospitality and Office

ELECTRICAL

- Available in 120/277 or 480 Voltages
- 10KA Surge Protection - Shuts off at end of life
- Optional 0-10V Dimming

ORDERING INFORMATION

Example ALCK	-		-		-		-					
SERIES	-	WATTAGE	-	DISTRIBUTION	-	VOLTAGE	-	COLOR TEMP	-	FINISH COLOR	-	OPTIONS
ALCK		75W G3 - 9,000L 105W G3 - 13,000L 150W G3 - 19,000L 200W G3 - 24,000L 230W G3 - 33,600L 300W G3 - 54,400L 420W G3 - 67,200L		T3M - Type III T4M - Type IV T5M - Type V		UNV - 120/277 Volt HV - 347-480 Volt		3K - 3000K 80 CRI 4K - 4000K 80 CRI 5K - 5000K 90 CRI		BZ - Bronze BK - Black WH - White		DA - Direct Arm Mount AA - Adjustable Arm RA - Round Pole Adapt WM - Wall Mount Adapt

Note: This product is imported

CERTIFICATIONS





LED HIGH OUTPUT AREA LIGHT



Job Name

MRT ACE PARKING LOT

Catalog Number

ALCK-145W-T4-UNV-50K-BRZ-AA

Specified By

RICHARD RACEY

Notes

TYPE SB4

The ALCK Series LED Area Lights bring together modern form and a simple (over engineered) design to compliment any architecturally designed property to provide area lighting uniformly throughout a parking lot or auto dealership. With its light weight construction and mounting versatility, the ALCK Area Light mounts to any type of light pole.

FEATURES

- Modern form factor with cast aluminum housing
- Stainless steel hardware
- Advanced thermal management integral heat sinks
- Lumileds High Performance Diodes
- Integral Inventronics Drivers
- Premium - Corrosion resistant polymer powder coat
- Quick and easy installation
- 100,000 Hour Life with 5 Year Factory Warranty
- Available in: Bronze or Black Finish
- CCT: 4000K or 5000K
- UL Listed For Wet Locations

APPLICATIONS

- Parking Lot Lighting
- Automotive Dealerships
- High Mast Lighting
- Shopping Centers
- Hospitality and Office

ELECTRICAL

- Available in 120/277 or 480 Voltages
- 10KA Surge Protection - Shuts off at end of life
- Optional 0-10V Dimming

ORDERING INFORMATION

Example ALCK	-		-		-		-					
SERIES	-	WATTAGE	-	DISTRIBUTION	-	VOLTAGE	-	COLOR TEMP	-	FINISH COLOR	-	OPTIONS
ALCK		75W G3 - 9,000L 105W G3 - 13,000L 150W G3 - 19,000L 200W G3 - 24,000L 230W G3 - 33,600L 300W G3 - 54,400L 420W G3 - 67,200L		T3M - Type III T4M - Type IV T5M - Type V		UNV - 120/277 Volt HV - 347-480 Volt		3K - 3000K 80 CRI 4K - 4000K 80 CRI 5K - 5000K 90 CRI		BZ - Bronze BK - Black WH - White		DA - Direct Arm Mount AA - Adjustable Arm RA - Round Pole Adapt WM - Wall Mount Adapt

Note: This product is imported

CERTIFICATIONS





LED LUMINAIRES

ProLED® WPS Wallpack Series



The ProLED WPS Wallpack Series provides the best value in the Commercial & Industrial Wallpack market to date. The WPS Series products are made of high quality, die-cast aluminum housings and a shatter resistant Borosilicate Glass Lens which offers a traditional, yet robust design. The traditional mounting design with 1/2" knock outs on sides makes installation a breeze.



Multiple Wattages

4K & 5K Color Temperature

Die Cast Aluminum Housing

Shatter Resistant

Borosilicate Glass Diffuser

UL Listed for Wet Locations

Applications:

Building Facade
Industrial Sites
Commercial Sites
Safety & Security
Self Storage Sites

ProLED® WPS Wallpack Series

Product #: WPS-80-5K-U Type: WP
 Project: MRT ACE Date: _____
 Comments: _____ Initials: RR

Performance

- Efficacy 125 – 133 LPW
- 4,000 & 5,000K Color Temperatures
- Universal 120-277VAC
- L70 Lumen Maintenance > 50,000 hours at 40C
- CRI >80
- Type IV Distribution

Controls

120-277V Photocell: The button photocell is designed to control lighting in accordance with ambient light level. It is equipped with quick-response time delay of approximately 3 seconds. The 120-277V operation suits most customer use applications. The product is UL773A listed, as well as CE and RoHS certified.

Construction

- Die-Cast Aluminum Housing
- Hinged Door Frame and Captive Screws
- Shatter Resistant Borosilicate Glass Diffuser
- Textured Architectural Bronze Powder-coat Finish
- Silicone Gasketing
- ½" Knock outs on Top & Sides

Ordering Information

SKU #	Product Code	Product Description	Wattage	CCT
10390	WPS-28-4K-U	ProLED STANDARD WALLPACK 28W 4000K UNV 120-277	28	4000K
10391	WPS-28-5K-U	ProLED STANDARD WALLPACK 28W 5000K UNV 120-277	28	5000K
10392	WPS-40-4K-U	ProLED STANDARD WALLPACK 40W 4000K UNV 120-277	40	4000K
10393	WPS-40-5K-U	ProLED STANDARD WALLPACK 40W 5000K UNV 120-277	40	5000K
10394	WPS-80-4K-U	ProLED STANDARD WALLPACK 80W 4000K UNV 120-277	80	4000K
10395	WPS-80-5K-U	ProLED STANDARD WALLPACK 80W 5000K UNV 120-277	80	5000K
10396	WPS-120-4K-U	ProLED STANDARD WALLPACK 120W 4000K UNV 120-277	120	4000K
10397	WPS-120-5K-U	ProLED STANDARD WALLPACK 120W 5000K UNV 120-277	120	5000K
Accessories				
10141	PC/120-277	BUTTON PHOTOCELL; 120-277VAC		

Performance Table						4000K			5000K		
Product Codes	Voltage	Nominal Wattage	CRI	Power Factor	Distribution	Actual Wattage	Lumens	Efficacy	Actual Wattage	Lumens	Efficacy
WPS-28	120-277 VAC	28W	80	>.9	Type IV	26.5	3514	132	26.4	3609	134
WPS-40		40W				37.9	4885	129	38	4948	130
WPS-80		80W				75.5	9797	130	75	9865	131
WPS-120		120W				113.7	14228	125	114	14465	127

ProLED® WPS Wallpack Series

Product #: _____ Type: _____

Project: _____ Date: _____

Comments: _____ Initials: _____

Specification Table

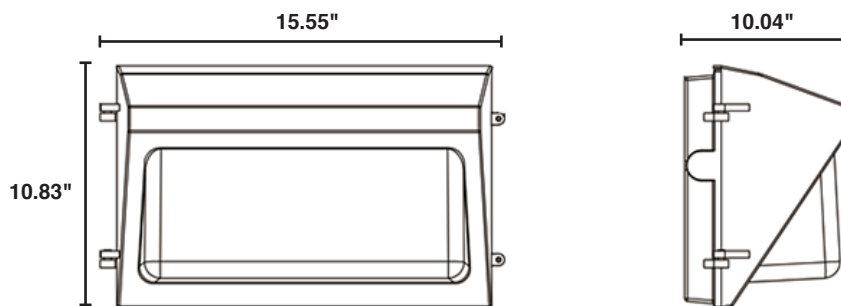
WPS	4000K				5000K			
Wattage	28	40	80	120	28	40	80	120
Power Factor	<0.9							
L70 Lifetime	>50,000							
Input Voltage	120-277VAC							
Surge Protection	4kV							
Mounting	Traditional - 1/2 " Knockouts on top and sides							
CCT	4000K and 5000K							
Warranty	5 Years							
Finish	Bronze							
Ingress Rating	IP65, UL Wet Location							
DLC	Standard							
Lens	Borosilicate Glass							
Housing	Injection Die-Cast Aluminum							
Weight (lbs)	9.59lbs				10.58lbs			
Dimensions	15.55"x10.83"x10.04"				15.55"x10.83"x10.04"			

*Useful Life is defined as the point in time at which the lamp will maintain at least 70% of its initial lumens. The lamp will continue to operate past this point at decreased light levels.

May not be compatible with all dimming systems, dimming performance may vary by system.

Warranty – Commercial / Industrial: This product is warranted for 5 years from the date of purchase.

Dimensions





Halco Lighting Technologies 2940 Pacific Drive | Norcross, GA 30071 | Toll Free 800.677.3334 | Phone 770.242.3612 | Fax 800.880.0822 | halcolighting.com | Atlanta | Chicago | Cleveland | Houston | Los Angeles | Phoenix
© 2020 Halco Lighting Technologies, LLC. All rights reserved. Halco and ProLED are registered trademarks of Halco Lighting Technologies. All sizes and specifications are subject to change. 070720. Re-order #20059.