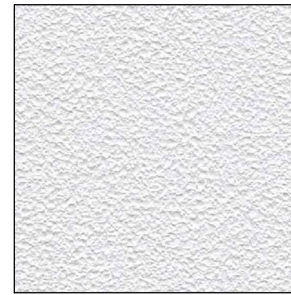


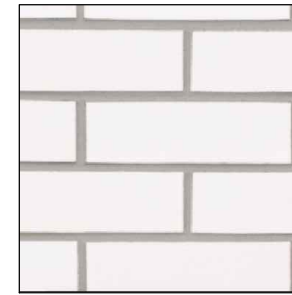
FINISH SCHEDULE

MARK	MANUFACTURER	DESCRIPTION	NOTES
FINISHES			
A1	DRYVIT	EIFS WALL SYSTEM (WHITE)	COLOR: ARBY081030 TEXTURE: SANDBLAST
A2	DRYVIT	CUSTOM BRICK SPECIALTY FINISH WITH 28 PT. 3/8" GROUT, BROOKLYN STYLE TEMPLATE	BRICK LAYER: ARBY121020, QUARZPUTZ GROUT LAYER: ARBY111009, NCB
B	NOT USED	---	---
C	DRYVIT	EIFS WALL SYSTEM (BROWN) WITH V-GROOVE REVEALS, REFER TO 3/A2.2	COLOR: ARBY131030 TEXTURE: SANDBLAST
D	SHERWIN WILLIAMS	SW #6109 HOPSACK	SATIN FINISH
E	NOT USED	---	---
F	SHERWIN WILLIAMS	SW #7024 FUNCTIONAL GRAY	SATIN FINISH
G	SHERWIN WILLIAMS	SW #2808 ROOKWOOD DARK BROWN	SATIN FINISH
H	NOT USED	---	---
J	TERRA COTTA ROOF TILE	S TYPE CLAY ROOF TILE	---
K	SHERWIN WILLIAMS	SW #7005 PURE WHITE	SATIN FINISH
METALS			
A	EXCEPTIONAL METALS/ DURO-LAST	TWO-PIECE SNAP-ON METAL COPING BONE WHITE/ DURO-LAST #SR70/TE87	FOR USE WITH DURO-LAST ROOFING SYSTEM DETAIL FA3110
B	EXCEPTIONAL METALS/ DURO-LAST	TWO-PIECE SNAP-ON METAL COPING MIDNIGHT BRONZE/ DURO-LAST #SR70/TE87	FOR USE WITH DURO-LAST ROOFING SYSTEM DETAIL FA3110
C	PRE-FABRICATED CANOPY/BAND	PRODUCT CODE: 9940-30198R PRODUCT NAME: FC SD RAL 3000 FLAME RED	TINT PRIMER TO SW P2 USE AT LEAST (2) TWO COATS OF FINISH
D	PRE-FABRICATED POST	PRODUCT CODE: 9840-80957R PRODUCT NAME: FC SD RAL 8017 CHOC. BROWN	TINT PRIMER TO SW P2 USE AT LEAST (2) TWO COATS OF FINISH

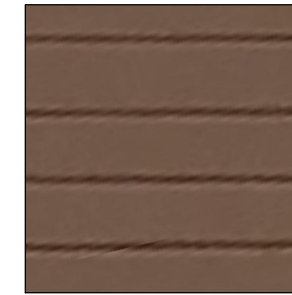
A1



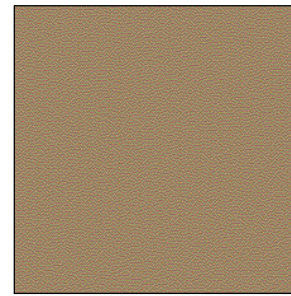
A2



C



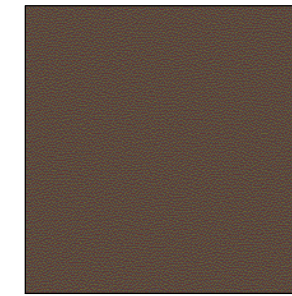
D



F



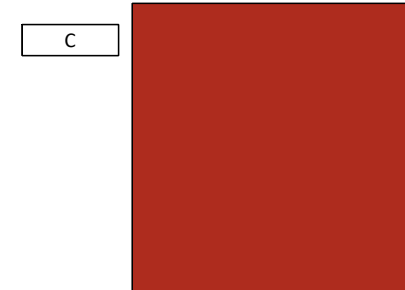
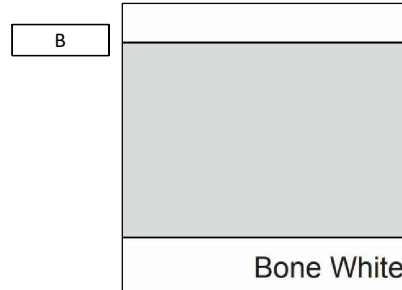
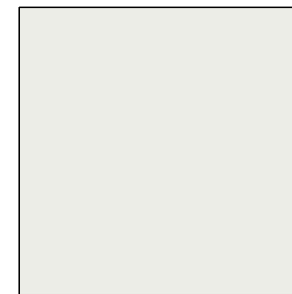
G



J



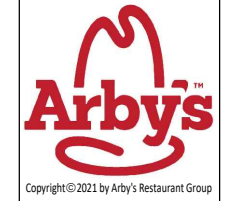
K



red
architecture + planning llc
589 nationwide blvd.
suite b
columbus, ohio 43215
tel: 614.487.8770
fax: 614.487.8777

DAVID A. EFAW
LICENSE # --- EXPIRES: ---

COPYRIGHT 2021. ALL DRAWINGS AND SPECIFICATIONS SHALL REMAIN THE PROPERTY OF RED ARCHITECTURE + PLANNING LLC AND MAY NOT BE USED, DUPLICATED OR ALTERED WITHOUT THE WRITTEN CONSENT OF THE ARCHITECT.



ARBY'S RESTAURANT - #1176
BUILDING REMODEL
10320 N 91ST AVE.
PEORIA, AZ 85345
FOR
FX4, LLC
225 E GERMANN ROAD #150, GILBERT, AZ 85297

PROJECT NUMBER:
ARF185