

Revisions

10/12/21 6 + D SUBMITTAL

12/15/21 6 + D RESUBMITTAL

Project

VISTERA OF
VENICE MULTIFAMILY
PHASE 1
VENICE, FLORIDA

LANDSCAPE
PLAN

Date:

10/12/2021

Scale:

1" = 20'-0"

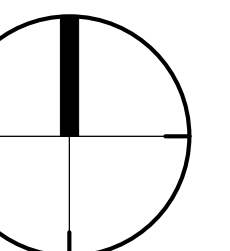
Drawn: Checked:

D5 MA

File Name:

VISTL-300NDWG

North



Sheet

L-300N

ORD 2019-19 LAND USE AND DEVELOPMENT STANDARDS

E. BUFFERS/LANDSCAPING LAUREL ROAD BUFFER REQUIRED:

- MIN. 15' WIDTH
- 3 CANOPY TREES/100 LF.
- 33 SHRUBS/100 LF.
- PROVIDED:**
- 15' WIDTH
- 308 LF/100'3 = 27 TREES
- 308 LF/100'33 = 318 SHRUBS

IRRIGATION RE-USE POINT OF CONNECTION (PHASE I)

STREETSCAPE LANDSCAPING / BERM PER STREETSCAPE PLANS

PROPERTY LINE

SEC. 110-19(K) REQUIRED SOIL VOLUMES FOR TREES:

- (1) GREATER THAN 45' HT. CANOPY TREES
 - a. MIN. OPEN SOIL 300 SF. OR 900 CU. FT. TO MAX 36" DEPTH
 - b. MIN. 4' FROM ANY PAVEMENT OR CURBING
 - c. MIN. 8' WIDTH PLANTING SPACE
 - d. MIN. 36" UNCOMPACTED SOIL DEPTH
- (2) 25'-45' HT. CANOPY TREES
 - a. MIN. OPEN SOIL 200 SF. OR 600 CU. FT. TO MAX 36" DEPTH
 - b. MIN. 3' FROM ANY PAVEMENT OR CURBING
 - c. MIN. 6' WIDTH PLANTING SPACE
 - d. MIN. 30" UNCOMPACTED SOIL DEPTH
- (3) UNDER 25' HT. UNDERSTORY TREES
 - a. MIN. OPEN SOIL 100 SF. OR 300 CU. FT. TO MAX 36" DEPTH
 - b. MIN. 2' FROM ANY PAVEMENT OR CURBING
 - c. MIN. 4' WIDTH PLANTING SPACE
 - d. MIN. 24" UNCOMPACTED SOIL DEPTH

CONTRACTOR TO INSURE REQUIREMENTS ARE MET FOR ALL PROPOSED TREES

SEE SHEET L-200N FOR PERIMETER FENCE INFORMATION

PROJECT SIGNAGE TO MEET ALL APPLICABLE CITY CODES

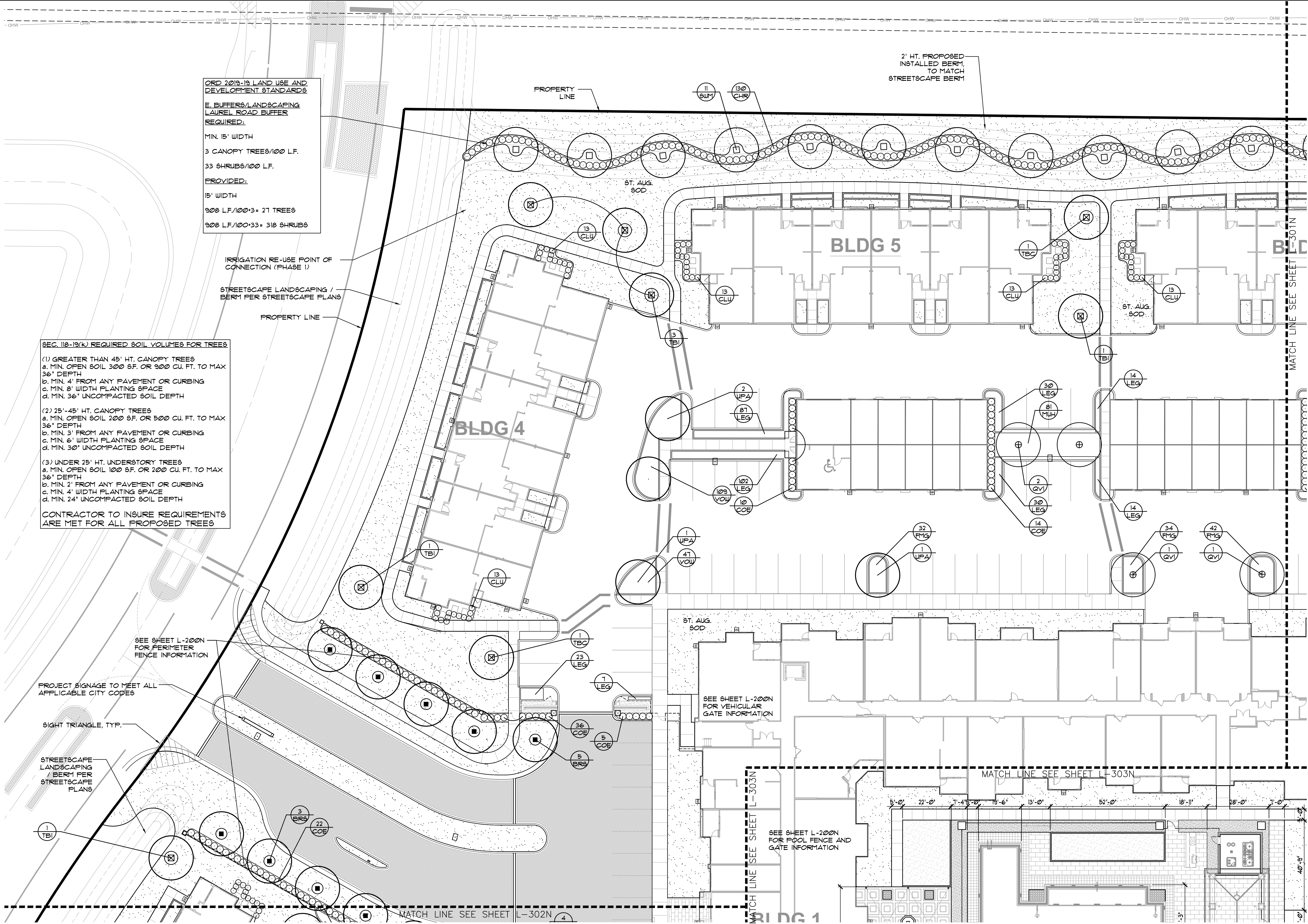
SIGHT TRIANGLE, TYP.

STREETSCAPE LANDSCAPING / BERM PER STREETSCAPE PLANS

SEE SHEET L-200N FOR VEHICULAR GATE INFORMATION

SEE SHEET L-200N FOR POOL FENCE AND GATE INFORMATION

2' HT. PROPOSED INSTALLED BERM, TO MATCH STREETSCAPE BERM



MATCH LINE SEE SHEET L-302N

MATCH LINE SEE SHEET L-303N

MATCH LINE SEE SHEET L-303N

5'-0" 22'-0" 7'-4 1/2'-0" 13'-6" 13'-0" 52'-0" 18'-11" 28'-0" 7'-0"

MATCH LINE SEE SHEET L-301N

SEC. 10-19(K) REQUIRED SOIL VOLUMES FOR TREES

- (1) GREATER THAN 45' HT. CANOPY TREES
 a. MIN. OPEN SOIL 300 SF. OR 900 CU. FT. TO MAX 36" DEPTH
 b. MIN. 4' FROM ANY PAVEMENT OR CURBING
 c. MIN. 8' WIDTH PLANTING SPACE
 d. MIN. 36" UNCOMPACTED SOIL DEPTH
- (2) 25'-45' HT. CANOPY TREES
 a. MIN. OPEN SOIL 200 SF. OR 500 CU. FT. TO MAX 36" DEPTH
 b. MIN. 3' FROM ANY PAVEMENT OR CURBING
 c. MIN. 6' WIDTH PLANTING SPACE
 d. MIN. 30" UNCOMPACTED SOIL DEPTH
- (3) UNDER 25' HT. UNDERSTORY TREES
 a. MIN. OPEN SOIL 100 SF. OR 200 CU. FT. TO MAX 36" DEPTH
 b. MIN. 2' FROM ANY PAVEMENT OR CURBING
 c. MIN. 4' WIDTH PLANTING SPACE
 d. MIN. 24" UNCOMPACTED SOIL DEPTH

CONTRACTOR TO INSURE REQUIREMENTS ARE MET FOR ALL PROPOSED TREES

ORD 2019-19 LAND USE AND DEVELOPMENT STANDARDS

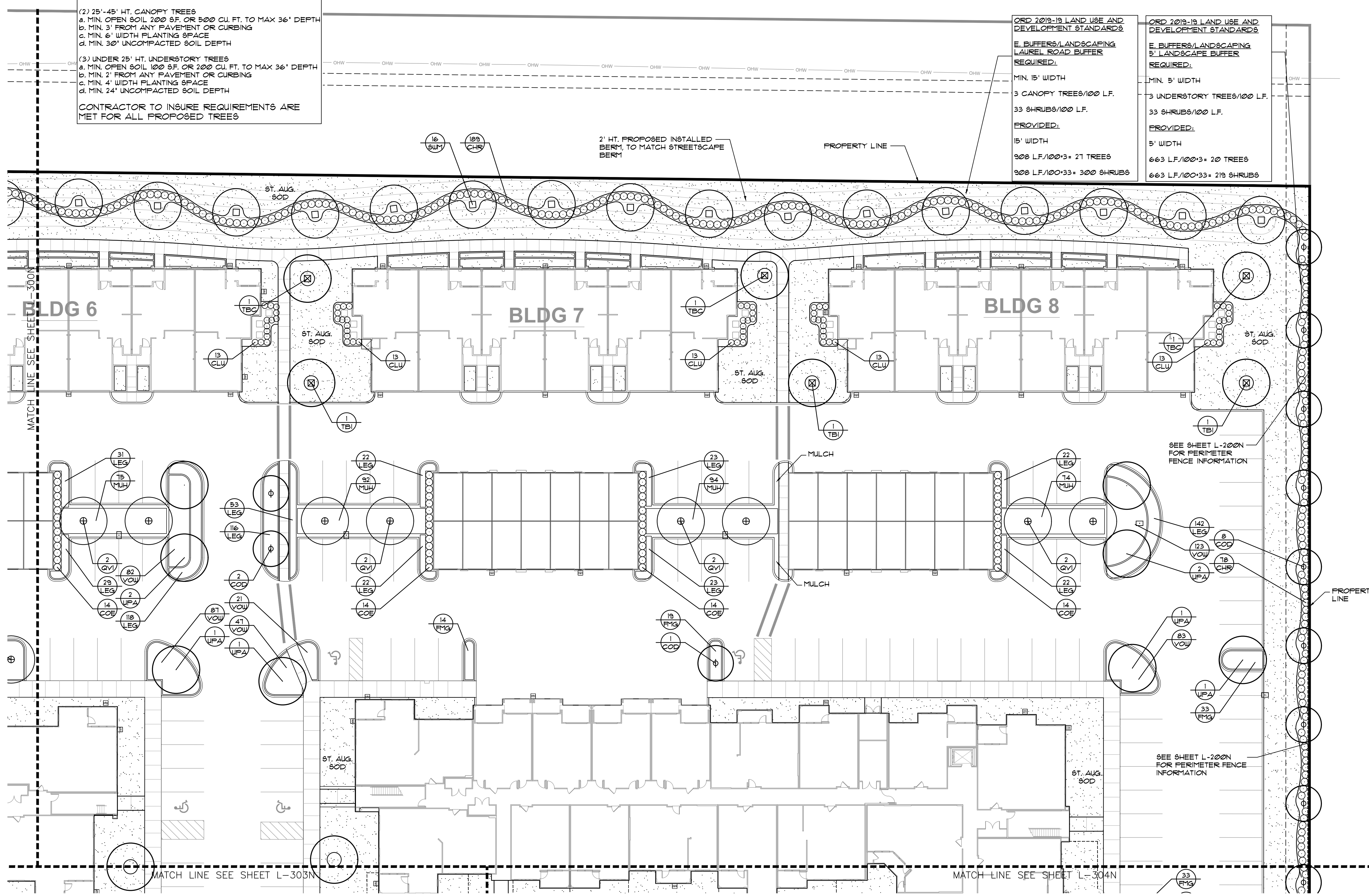
E. BUFFERS/LANDSCAPING LAUREL ROAD BUFFER

- REQUIRED:**
 MIN. 15' WIDTH
 3 CANOPY TREES/100 L.F.
 33 SHRUBS/100 L.F.
- PROVIDED:**
 15' WIDTH
 908 L.F./100'3 = 27 TREES
 908 L.F./100'33 = 300 SHRUBS

ORD 2019-19 LAND USE AND DEVELOPMENT STANDARDS

E. BUFFERS/LANDSCAPING 5' LANDSCAPE BUFFER

- REQUIRED:**
 MIN. 5' WIDTH
 3 UNDERSTORY TREES/100 L.F.
 33 SHRUBS/100 L.F.
- PROVIDED:**
 5' WIDTH
 663 L.F./100'3 = 20 TREES
 663 L.F./100'33 = 219 SHRUBS

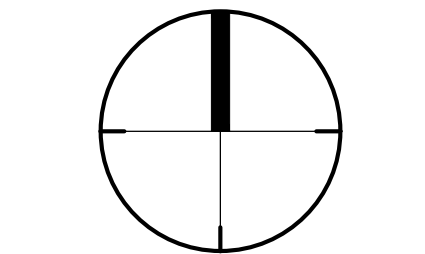


Revisions

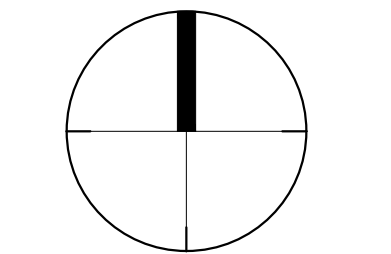
10/12/21	6	4	D	SUBMITTAL
12/15/21	6	4	D	RESUBMITTAL

VISTERA OF VENICE MULTIFAMILY PHASE 1
 VENICE, FLORIDA

LANDSCAPE PLAN
 Date: 10/12/2021
 Scale: 1" = 20'-0"
 Drawn: D& MA
 Checked: MA
 File Name: VISTL-30INDWG
 North



Sheet
L-301N



SEC. 26-438 INTERIOR LANDSCAPING

REQUIRED:	PROVIDED:
10 SF. INTERIOR LANDSCAPING FOR EA. PARKING SPACE	416 PARKING SPACES X 10 = 4,160 SF. INTERIOR LANDSCAPE
1 TREE FOR EACH 100 SF. OF REQUIRED INTERIOR LANDSCAPE AREA	4,160 SF. / 100 = 42 TREES
1 TREE / 50 LF. OF LANDSCAPE DIVIDER BETWEEN TIERS OF PARKING	666 LF. / 50 = 14 TREES

SEC. 26-436 LANDSCAPING ADJ. TO PUBLIC ROW

REQUIRED:	PROVIDED:
MIN. 5' WIDTH	5' WIDTH
1 TREE/50 LF.	62 LF. / 50 = 2 TREES
MIN. 2' HT. CONT. HEDGE	CONT. HEDGE

SEC. 118-12. (a)(1) b. MINIMUM TREE INCHES PER ACRE

REQUIRED:

FORMULA FOR PLANTING NEW TREES:
TOTAL PROJECT AREA ACREAGE X 40 INCHES = REQUIRED TREE INCHES PER ACRE

TOTAL PROJECT AREA ACREAGE = 14.85 AC

14.85 AC X 40 = 594 TOTAL TREE INCHES REQUIRED

PROVIDED:

591.5 TREE INCHES

SEC. 118-19(k) REQUIRED SOIL VOLUMES FOR TREES

(1) GREATER THAN 45' HT. CANOPY TREES

- MIN. OPEN SOIL 300 SF. OR 900 CU. FT. TO MAX 36" DEPTH
- MIN. 4' FROM ANY PAVEMENT OR CURBING
- MIN. 8' WIDTH PLANTING SPACE
- MIN. 36" UNCOMPACTED SOIL DEPTH

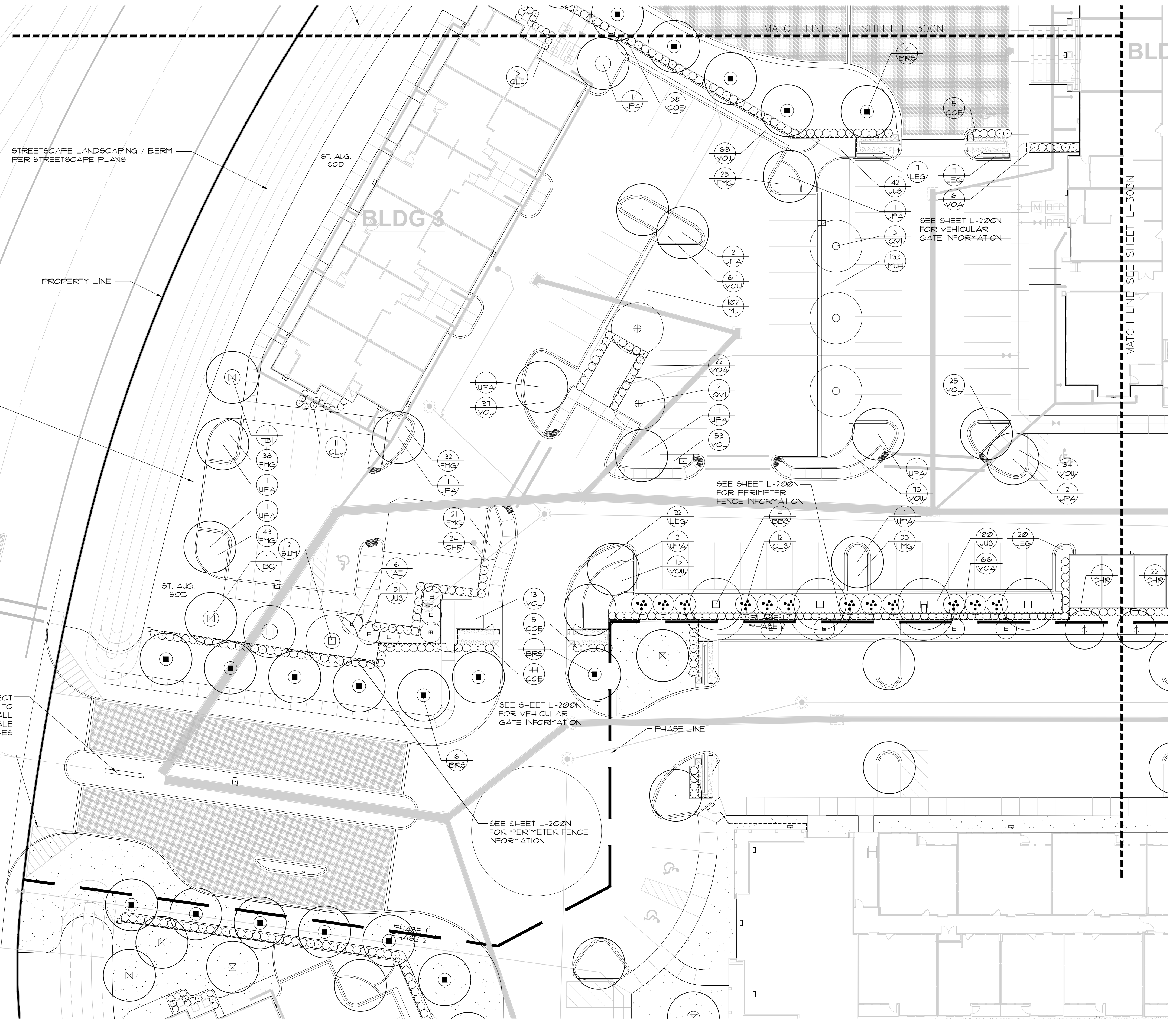
(2) 25'-45' HT. CANOPY TREES

- MIN. OPEN SOIL 200 SF. OR 500 CU. FT. TO MAX 36" DEPTH
- MIN. 3' FROM ANY PAVEMENT OR CURBING
- MIN. 6' WIDTH PLANTING SPACE
- MIN. 30" UNCOMPACTED SOIL DEPTH

(3) UNDER 25' HT. UNDERSTORY TREES

- MIN. OPEN SOIL 100 SF. OR 200 CU. FT. TO MAX 36" DEPTH
- MIN. 2' FROM ANY PAVEMENT OR CURBING
- MIN. 4' WIDTH PLANTING SPACE
- MIN. 24" UNCOMPACTED SOIL DEPTH

CONTRACTOR TO INSURE REQUIREMENTS ARE MET FOR ALL PROPOSED TREES



STREETSCAPE LANDSCAPING / BERM PER STREETSCAPE PLANS

PROPERTY LINE

BLDG 3

ST. AUG. SOD

ST. AUG. SOD

PROJECT SIGNAGE TO MEET ALL APPLICABLE CITY CODES

SIGHT TRIANGLE, TYP.

MATCH LINE SEE SHEET L-300N

BLD

MATCH LINE SEE SHEET L-303N

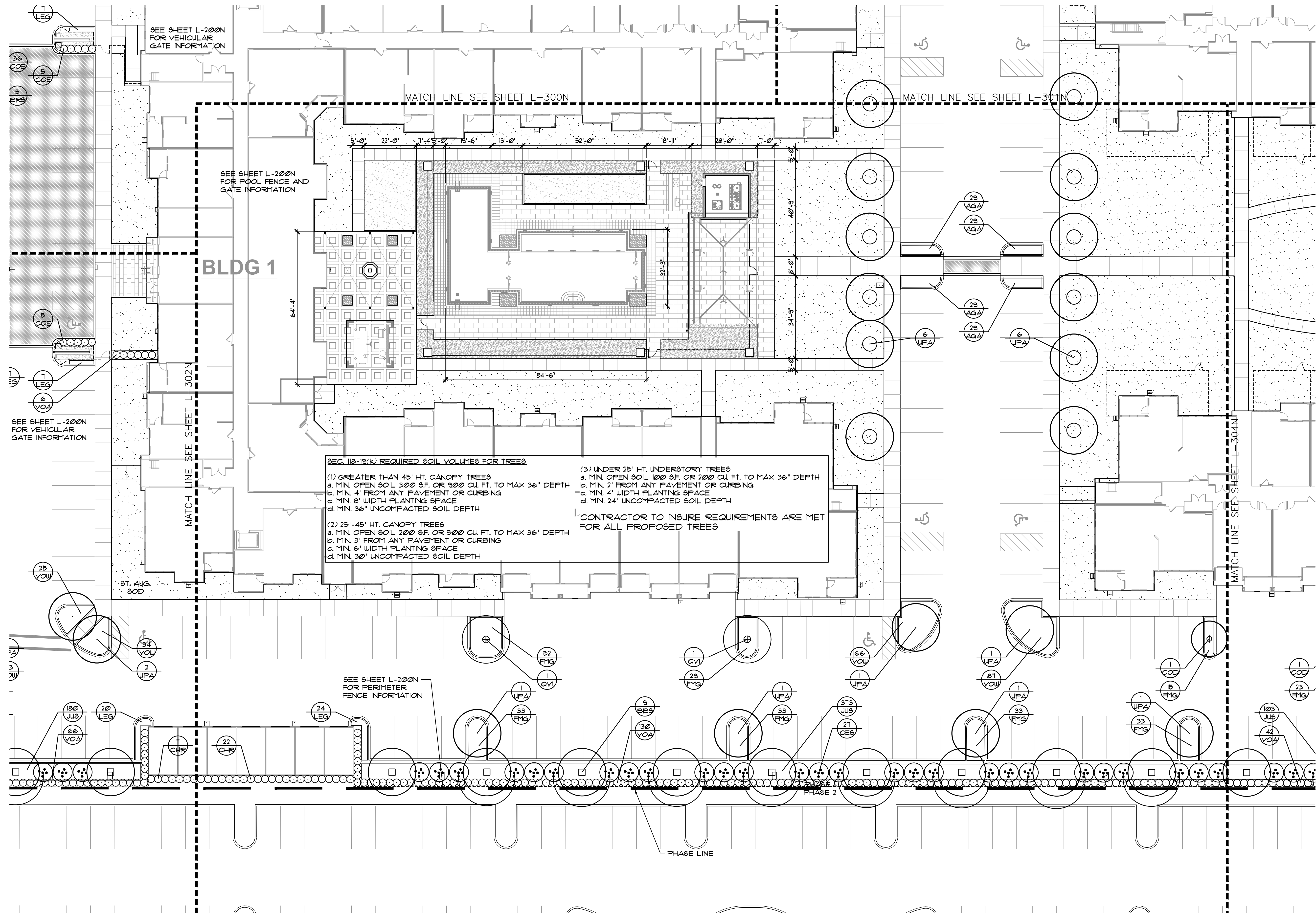
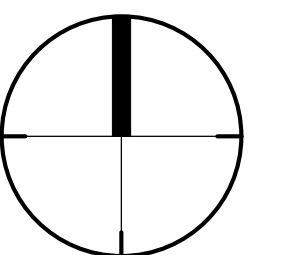
SEE SHEET L-200N FOR PERIMETER FENCE INFORMATION

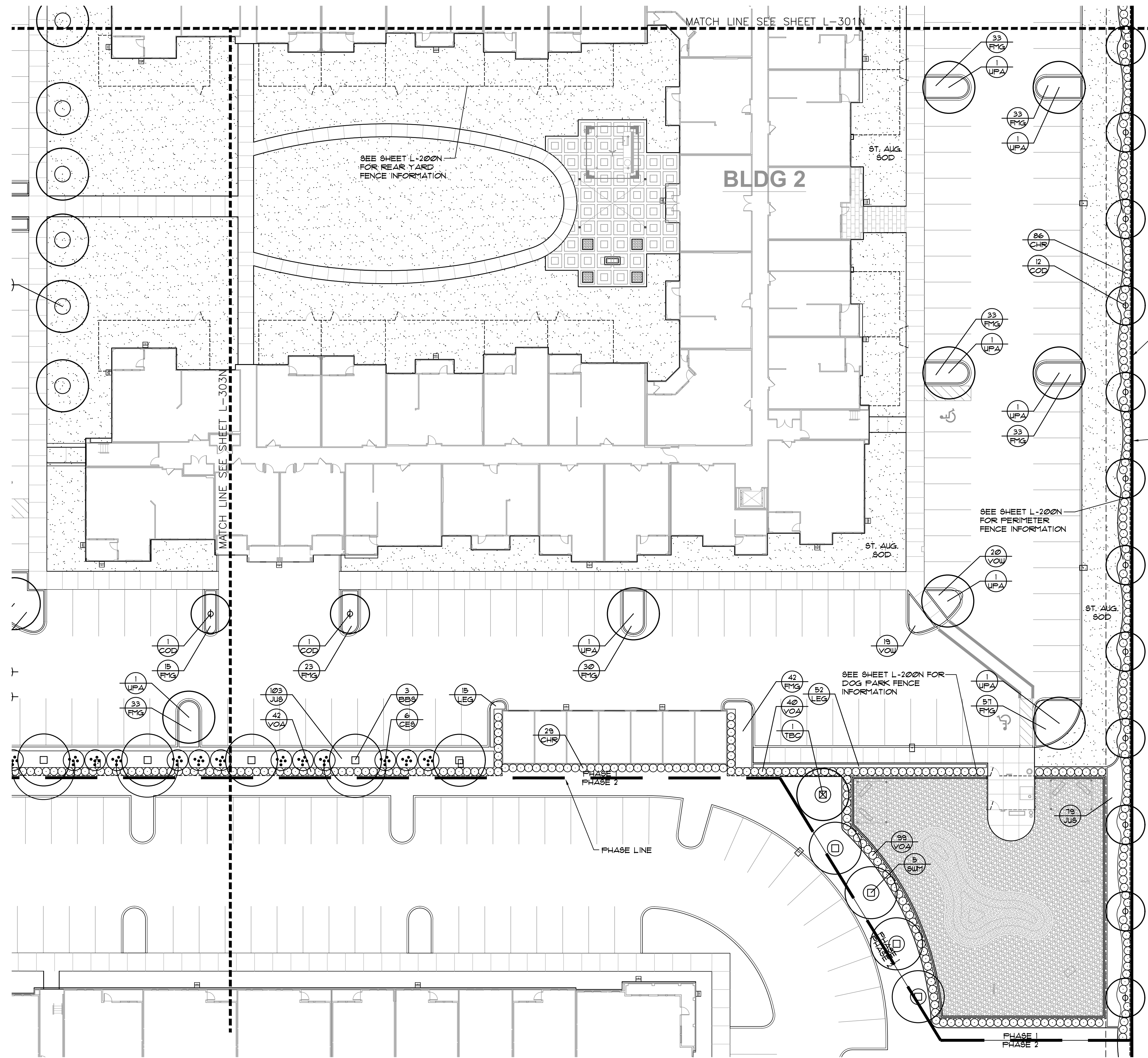
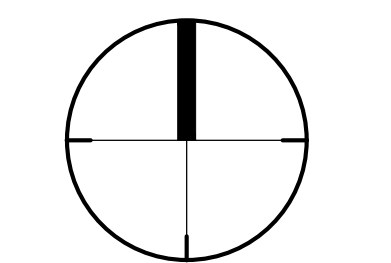
SEE SHEET L-200N FOR VEHICULAR GATE INFORMATION

SEE SHEET L-200N FOR PERIMETER FENCE INFORMATION

PHASE LINE

PHASE 2

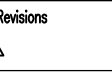




ORD 2019-19 LAND USE AND DEVELOPMENT STANDARDS
E. BUFFERS/LANDSCAPING
REQUIRED:
MIN. 5' WIDTH
3 UNDERSTORY TREES/100 L.F.
33 SHRUBS/100 L.F.
PROVIDED:
5' WIDTH
663 L.F./100*3 = 20 TREES
663 L.F./100*33 = 219 SHRUBS

SEC. 112-19(K) REQUIRED SOIL VOLUMES FOR TREES
(1) GREATER THAN 45' HT. CANOPY TREES
a. MIN. OPEN SOIL 300 SF. OR 900 CU. FT. TO MAX 36" DEPTH
b. MIN. 4' FROM ANY PAVEMENT OR CURBING
c. MIN. 8' WIDTH PLANTING SPACE
d. MIN. 36" UNCOMPACTED SOIL DEPTH
(2) 25'-45' HT. CANOPY TREES
a. MIN. OPEN SOIL 200 SF. OR 500 CU. FT. TO MAX 36" DEPTH
b. MIN. 3' FROM ANY PAVEMENT OR CURBING
c. MIN. 6' WIDTH PLANTING SPACE
d. MIN. 30" UNCOMPACTED SOIL DEPTH
(3) UNDER 25' HT. UNDERSTORY TREES
a. MIN. OPEN SOIL 100 SF. OR 200 CU. FT. TO MAX 36" DEPTH
b. MIN. 2' FROM ANY PAVEMENT OR CURBING
c. MIN. 4' WIDTH PLANTING SPACE
d. MIN. 24" UNCOMPACTED SOIL DEPTH
CONTRACTOR TO INSURE REQUIREMENTS ARE MET FOR ALL PROPOSED TREES

Set



10/12/21 54D SUBMITTAL

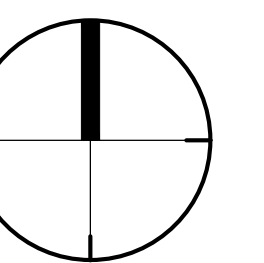
12/15/21 54D RESUBMITTAL

Project

**VISTERA OF
VENICE MULTIFAMILY
PHASE 2**
VENICE, FLORIDA

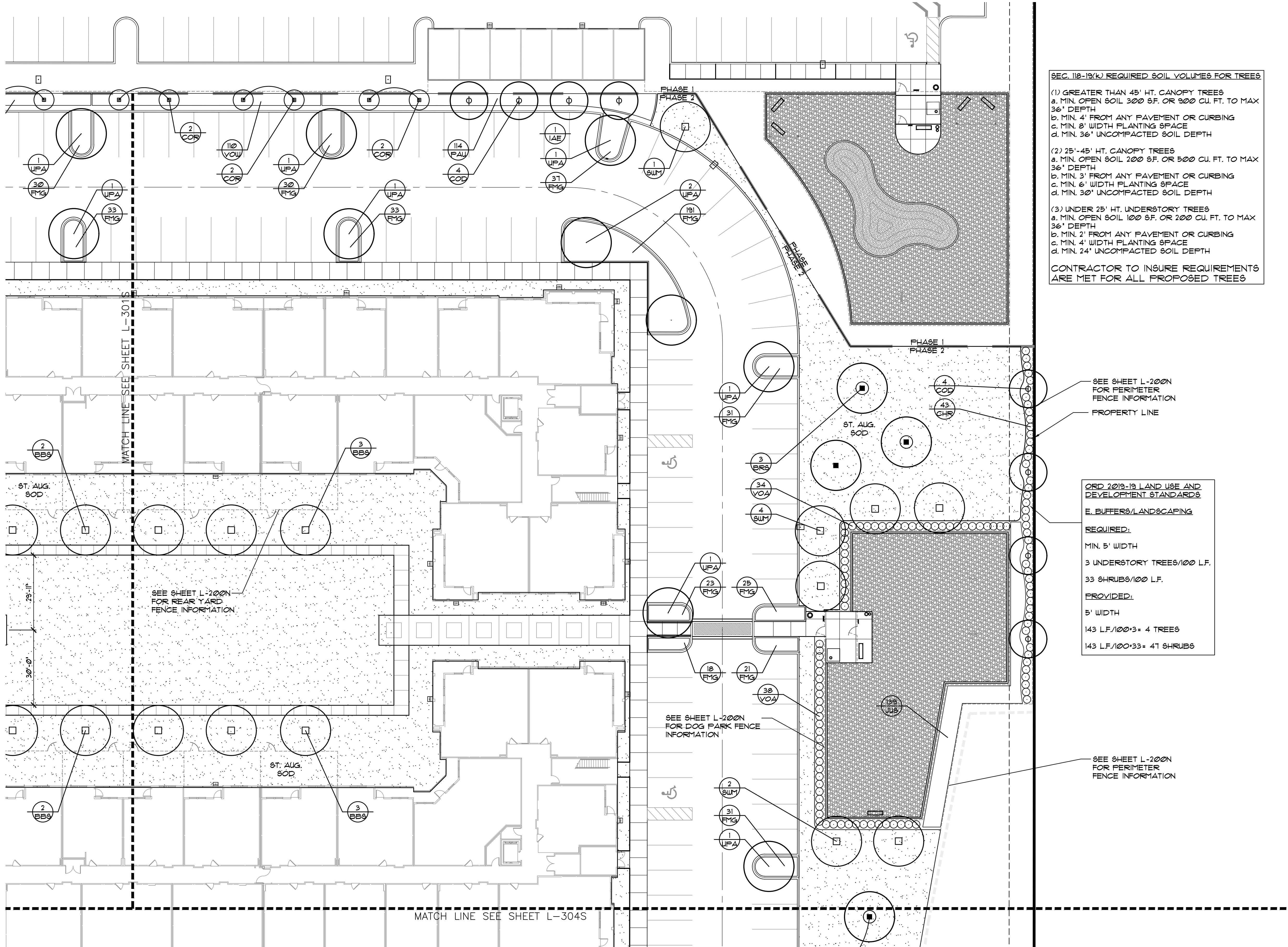
LANDSCAPE
PLAN

Date: 10/14/2021
Scale: 1" = 20'-0"
Drawn: D5 MA
Checked: MA
File Name: VISTL-302S.DWG
North



Sheet

L-302S



SEC. 118-19(K) REQUIRED SOIL VOLUMES FOR TREES

- (1) GREATER THAN 45' HT. CANOPY TREES
a. MIN. OPEN SOIL 300 SF. OR 300 CU. FT. TO MAX 36" DEPTH
b. MIN. 4' FROM ANY PAVEMENT OR CURBING
c. MIN. 8' WIDTH PLANTING SPACE
d. MIN. 36" UNCOMPACTED SOIL DEPTH
- (2) 25'-45' HT. CANOPY TREES
a. MIN. OPEN SOIL 200 SF. OR 500 CU. FT. TO MAX 36" DEPTH
b. MIN. 3' FROM ANY PAVEMENT OR CURBING
c. MIN. 6' WIDTH PLANTING SPACE
d. MIN. 30" UNCOMPACTED SOIL DEPTH
- (3) UNDER 25' HT. UNDERSTORY TREES
a. MIN. OPEN SOIL 100 SF. OR 200 CU. FT. TO MAX 36" DEPTH
b. MIN. 2' FROM ANY PAVEMENT OR CURBING
c. MIN. 4' WIDTH PLANTING SPACE
d. MIN. 24" UNCOMPACTED SOIL DEPTH

CONTRACTOR TO INSURE REQUIREMENTS ARE MET FOR ALL PROPOSED TREES

SEE SHEET L-200N FOR PERIMETER FENCE INFORMATION
PROPERTY LINE

ORD 2019-19 LAND USE AND DEVELOPMENT STANDARDS
E. BUFFERS/LANDSCAPING
REQUIRED:
MIN. 5' WIDTH
3 UNDERSTORY TREES/100 L.F.
33 SHRUBS/100 L.F.
PROVIDED:
5' WIDTH
143 L.F./100' = 4 TREES
143 L.F./100' = 33 = 47 SHRUBS

SEE SHEET L-200N FOR DOG PARK FENCE INFORMATION

SEE SHEET L-200N FOR PERIMETER FENCE INFORMATION

MATCH LINE SEE SHEET L-301S

SEE SHEET L-200N FOR REAR YARD FENCE INFORMATION

MATCH LINE SEE SHEET L-304S

CODE PLANT LIST (PHASE 1)

TREES (Code Required)

SYM	QTY	BOTANICAL NAME	COMMON NAME	SPECIFICATION	SPECIES TYPE
BRS	19	BURSERA SIMARUBA	GUMBO LIMBO	12' HT. X 6' SPRD. MIN., 3" CAL.	NATIVE
BBS	16	BUDICA BUCERAS 'SHADY LADY'	SHADY LADY BLACK OLIVE	12' HT. X 6' SPRD. MIN., 3" CAL.	NON-NATIVE
COD	25	COCCOLOBA DIVERSIFOLIA	PIGEON PLUM	14' HT. X 6' SPRD. MIN., 3" CAL. MIN., STD.	NATIVE
CES	45	CONOCARPUS ERECTUS SERICEUS	SILVER BUTTONWOOD- TREE FORM	14' HT. X 6' SPRD. MIN., 3" CAL. AGG. MIN., MUL	NATIVE
IAE	6	ILEX ATTENUATA 'EAGLESTON'	EAGLESTON HOLLY	12' HT. X 4' SPRD. MIN., 3" CAL. MIN., FTG	NON-NATIVE
QV1	19	QUERCUS VIRGINIANA	LIVE OAK	12' HT. X 6' SPRD. MIN., 3" CAL.	NATIVE
SWM	34	SWIETENIA MAHOGANY	MAHOGANY	12' HT. X 6' SPRD. MIN., 3" CAL.	NATIVE
TBC	7	TABEBUIA CARAIBA	SILVER/YELLOW TRUMPET TREE	12' HT. X 6' SPRD. MIN., 3" CAL.	NON-NATIVE
TBI	10	TABEBUIA IMPETIGINOSA	PURPLE TRUMPET TREE	12' HT. X 6' SPRD. MIN., 3" CAL.	NON-NATIVE
UPA	52	ULMUS PARVIFOLIA 'ALLEE'	ALLEE ELM	12' HT. X 6' SPRD. MIN., 3" CAL.	NON-NATIVE

SHRUBS (Code Required Buffer and Screening Hedge Shrubs)

SYM	QTY	BOTANICAL NAME	COMMON NAME	SPECIFICATION	SPECIES TYPE
CHR	565	CHRYSOBALANUS ICACO	COCOPLUM	24" HT. MIN., FULL, 36" O.C. (CODE REQ. SIZE)	NATIVE
COE	249	CONOCARPUS ERECTUS	GREEN BUTTONWOOD	24" HT. MIN., FULL, 36" O.C. (CODE REQ. SIZE)	NATIVE
CLU	154	CLUSIA FLUMINENSIS	DWARF SMALL LEAF CLUSIA	24" HT. MIN., FULL, 30" O.C. (CODE REQ. SIZE)	NON-NATIVE
VOA	383	VIBURNUM ODORATISSUM 'AWABUKI'	AWABUKI VIBURNUM	24" HT. MIN., FULL, 36" O.C. (CODE REQ. SIZE)	NON-NATIVE

SHRUBS, GROUNDCOVER & PERENNIALS

SYM	QTY	BOTANICAL NAME	COMMON NAME	SPECIFICATION	SPECIES TYPE
AGA	116	AGAPANTHUS AFRICANUS 'QUEEN ANNE'	LILY OF THE NILE	3 GAL., 5-7 PPP, FULL, 18" O.C.	NON-NATIVE
FMG	878	FICUS MICROCARPA 'GREEN ISLAND'	GREEN ISLAND FICUS	3 GAL., 16"-18" HT. X 18" SPRD, 24" O.C.	NON-NATIVE
JUS	828	JUSTICIA SPICIGERA	MEXICAN HONEYSUCKLE	3 GAL., 18"-24" HT. X 18"-24" SPR., 30" O.C.	NON-NATIVE
LEG	1169	LIRIOPE MUSCARI 'EMERALD GODDESS'	EMERALD GODDESS LIRIOPE	3 GAL., FULL IN POT, 18" O.C.	NON-NATIVE
MUH	789	MUHLEBERGIA CAPILLARIS	MUHLY GRASS	3 GAL., 24" X 18"-24", 30" O.C.	NATIVE
VOW	1293	VIBURNUM OVOVATUM 'WHORLED CLASS'	WHORLED CLASS VIBURNUM	3 GAL., 16"-18" HT. X 18" SPRD, 24" O.C.	NATIVE

CODE PLANT LIST (PHASE 2)

TREES (Code Required)

SYM	QTY	BOTANICAL NAME	COMMON NAME	SPECIFICATION	SPECIES TYPE
BBS	17	BUDICA BUCERAS 'SHADY LADY'	SHADY LADY BLACK OLIVE	12' HT. X 6' SPRD. MIN., 3" CAL.	NON-NATIVE
BRS	15	BURSERA SIMARUBA	GUMBO LIMBO	12' HT. X 6' SPRD. MIN., 3" CAL.	NATIVE
COD	12	COCCOLOBA DIVERSIFOLIA	PIGEON PLUM	14' HT. X 6' SPRD. MIN. 3" CAL. MIN., STD.	NATIVE
COR	18	CORDIA SEBESTENA	ORANGE GEIGER	10'-12' HT. X 5' SPRD. MIN, 3" CAL. MIN., STD.	NATIVE
IAE	3	ILEX ATTENUATA 'EAGLESTON'	EAGLESTON HOLLY- FTG	10'-12" HT. X 5' SPRD., MIN. 3" CAL., FULL TO GROUND	NON-NATIVE
IAS	33	ILEX ATTENUATA 'EAGLESTON'	EAGLESTON HOLLY	10'-12" HT. X 5' SPRD., MIN. 3" CAL., STANDARD	NON-NATIVE
QV1	21	QUERCUS VIRGINIANA	LIVE OAK	12' HT. X 6' SPRD. MIN., 3" CAL.	NATIVE
SWM	10	SWIETENIA MAHOGANY	MAHOGANY	12' HT. X 6' SPRD. MIN., 3" CAL.	NATIVE
TBC	8	TABEBUIA CARAIBA	SILVER/YELLOW TRUMPET TREE	12' HT. X 6' SPRD. MIN., 3" CAL.	NON-NATIVE
TBI	3	TABEBUIA IMPETIGINOSA	PURPLE TRUMPET TREE	12' HT. X 6' SPRD. MIN., 3" CAL.	NON-NATIVE
UPA	60	ULMUS PARVIFOLIA 'ALLEE'	ALLEE ELM	12' HT. X 6' SPRD. MIN., 3" CAL.	NON-NATIVE

SHRUBS (Code Required Buffer and Screening Hedge Shrubs)

SYM	QTY	BOTANICAL NAME	COMMON NAME	SPECIFICATION	SPECIES TYPE
CHR	454	CHRYSOBALANUS ICACO	COCOPLUM	24" HT. MIN., FULL, 36" O.C. (CODE REQ. SIZE)	NATIVE
CLU	47	CLUSIA FLUMINENSIS	DWARF SMALL LEAF CLUSIA	24" HT. MIN., FULL, 30" O.C. (CODE REQ. SIZE)	NON-NATIVE
COE	159	CONOCARPUS ERECTUS	GREEN BUTTONWOOD	24" HT. MIN., FULL, 36" O.C. (CODE REQ. SIZE)	NATIVE
VOA	72	VIBURNUM ODORATISSUM 'AWABUKI'	AWABUKI VIBURNUM	24" HT. MIN., FULL, 36" O.C. (CODE REQ. SIZE)	NON-NATIVE

SHRUBS, GROUNDCOVER & PERENNIALS

SYM	QTY	BOTANICAL NAME	COMMON NAME	SPECIFICATION	SPECIES TYPE
FMG	1911	FICUS MICROCARPA 'GREEN ISLAND'	GREEN ISLAND FICUS	3 GAL., 16"-18" HT. X 18" SPRD, 24" O.C.	NON-NATIVE
JUS	380	JUSTICIA SPICIGERA	MEXICAN HONEYSUCKLE	3 GAL., 18"-24" HT. X 18"-24" SPR., 30" O.C.	NON-NATIVE
LEG	1302	LIRIOPE MUSCARI 'EMERALD GODDESS'	EMERALD GODDESS LIRIOPE	3 GAL., FULL IN POT, 18" O.C.	NON-NATIVE
MUH	908	MUHLEBERGIA CAPILLARIS	MUHLY GRASS	3 GAL., 24" X 18"-24", 30" O.C.	NATIVE
NEO	318	NEOMARICA REGINA	WALKING IRIS	3 GAL., FULL IN POT, 18" O.C.	NON-NATIVE
PAU	230	PLUMBAGO 'IMPERIAL BLUE'	IMPERIALBLUE PLUMBAGO	3 GAL., 18"-24" X 18"-24", 30" O.C.	NON-NATIVE
VOW	1181	VIBURNUM OVOVATUM 'WHORLED CLASS'	WHORLED CLASS VIBURNUM	3 GAL., 16"-18" HT. X 18" SPRD, 24" O.C.	NATIVE

GENERAL LANDSCAPE NOTES

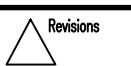
- THE CONTRACTOR SHALL VERIFY ALL PLANT MATERIAL QUANTITIES PRIOR TO BIDDING. IN THE EVENT OF A VARIATION BETWEEN THE PLANT LIST AND THE ACTUAL NUMBERS OF PLANTS SHOWN ON THE PLANS, THE PLANS SHALL CONTROL. THE CONTRACTOR SHALL MAINTAIN A QUALIFIED SUPERVISOR ON THE SITE DURING CONSTRUCTION OF ALL PHASES OF THE WORK THROUGH FINAL OWNER ACCEPTANCE.
- UNLESS OTHERWISE NOTED ON THE DRAWINGS, ALL AREAS INDICATED AS 'SOD' ON THE DRAWINGS SHALL BE ST. AUGUSTINE SOLID SOD.
- CALIPER OF TREES SHALL BE MEASURED IN ACCORDANCE WITH AAS STANDARDS OF 6' ABOVE TOP OF ROOTBALL FOR TREES 4' OR LESS IN CALIPER AND 12' ABOVE TOP OF ROOTBALL FOR TREES GREATER THAN 4' IN CALIPER.
- ALL PLANT MATERIAL SHALL MEET OR EXCEED THE STANDARDS OF FLORIDA NO 1 AS GIVEN IN 'GRADES AND STANDARDS FOR NURSERY PLANTS 1998,' STATE OF FLORIDA, DEPARTMENT OF AGRICULTURE, TALLAHASSEE, AND ANY AMENDMENTS THERETO. ALL MATERIAL SHALL BE SOUND AND VIGOROUS, FREE FROM DISEASE, INSECT PESTS, AND/OR THEIR EGGS, AND SHALL HAVE A HEALTHY, NORMAL AND FULLY DEVELOPED ROOT SYSTEM. THE HEIGHT AND SPREAD OF PLANT MATERIAL SHALL BE THE DETERMINING FACTOR FOR THE PLANT MATERIAL, NOT THE GALLONAGE SPECIFIED. THE OWNER/LANDSCAPE ARCHITECT RESERVES THE RIGHT TO REJECT ALL PLANT MATERIAL(S) THAT DO NOT MEET THE SPECIFICATIONS SET FORTH. ALL PLANT MATERIAL SHALL BE SUBJECT TO APPROVAL BY THE OWNER / LANDSCAPE ARCHITECT PRIOR TO INSTALLATION.
- ALL ROOTBALLS FOR TREES SHALL BE IN ACCORDANCE WITH THE MINIMUM ROOTBALL SIZES AS SPECIFIED IN 'GRADES AND STANDARDS FOR NURSERY PLANTS 1998,' STATE OF FLORIDA, DEPARTMENT OF AGRICULTURE, TALLAHASSEE, AND ANY AMENDMENTS THERETO.
- CONTRACTOR TO SUBMIT PHOTOS OF ALL PROPOSED TREE, SHRUB AND VINE MATERIAL FOR OWNER / LANDSCAPE ARCHITECT APPROVAL PRIOR TO PROCUREMENT.
- THE LANDSCAPE ARCHITECT MAY REJECT ANY PLANT MATERIAL BROUGHT TO THE SITE WHICH HE DEEMS TO BE OF INFERIOR QUALITY OR APPEARANCE.
- THE CONTRACTOR SHALL FURNISH AND PAY FOR ALL CONTRACTOR SUPPLIED TREES, SHRUBS AND VINES INCLUDING SODDED TURF, HYDRONULCHES AND FLATTED GROUND COVERS. THE CONTRACTOR SHALL ALSO BE RESPONSIBLE AND PAY FOR: PLANTING OF ALL PLANT MATERIALS, THE STAKING OF TREES AND THE CONTINUOUS MAINTENANCE AND PROTECTION OF ALL PLANT MATERIALS UPON THEIR ARRIVAL AT THE SITE THROUGH FINAL OWNER ACCEPTANCE. THE CONTRACTOR SHALL ALSO INCLUDE ALL COSTS ASSOCIATED WITH THE LOCATION OF UNDERGROUND UTILITIES, LAYOUT OF THE WORK, AND SOIL TESTING AS OUTLINED IN THE TECHNICAL SPECIFICATIONS.
- THE CONTRACTOR SHALL PROVIDE NECESSARY EQUIPMENT AND LABOR TO COMPLETE LANDSCAPING OF THE SITE AS INDICATED IN THE CONTRACT DOCUMENTS.
- NO SUBSTITUTIONS WILL BE ALLOWED. IF NECESSARY, THE CONTRACTOR MUST OBTAIN WRITTEN APPROVAL FROM THE OWNER / LANDSCAPE ARCHITECT.
- ALL PLANT BEDS SHALL BE TOP DRESSED WITH A MINIMUM OF 3" DEPTH PINE BARK 'MINI NUGGETS' MULCH, INCLUDING WITHIN A 2' RADIUS AROUND THE TRUNK OF A TREE. MULCH SHALL NOT BE PLACED DIRECTLY AGAINST THE TREE TRUNK.
- ALL TREES SHALL BE GUARANTEED FOR A PERIOD OF ONE YEAR FROM THE DATE OF FINAL INSPECTION.
- ALL TREES SHALL HAVE ALL SYNTHETIC BURLAP REMOVED FROM THE ENTIRE ROOT BALL. BURLAP SHALL BE REMOVED FROM THE TOP ONE-THIRD OF THE ROOT BALL. THE TOP THREE ROWS OF SQUARES ON ALL CAGES AROUND THE ROOT BALLS SHALL BE CLIPPED OFF AND REMOVED.
- THE CONTRACTOR SHALL READ AND ADHERE TO ALL WRITTEN SPECIFICATIONS. THESE PLANS ARE NOT VALID WITHOUT THE ACCOMPANYING TECHNICAL SPECIFICATIONS.
- THE CONTRACTOR SHALL VISUALLY INSPECT THE SOILS CONDITION OF THE SITE. HE SHALL DIG A MINIMUM OF 12 TEST HOLES 3 FOOT DEEP RANDOMLY AROUND THE SITE. HE SHALL PERFORM PERCOLATION TESTS IN THESE HOLES FOR A PERIOD OF ONE HOUR EACH. THE HOLES SHALL BE FILLED WITH WATER AND IF THE HOLES HOLD MORE THAN 6" OF WATER AFTER ONE HOUR, THE LANDSCAPE ARCHITECT SHOULD BE NOTIFIED OF THE PROBLEM. THE CONTRACTOR SHALL RECOMMEND SUBSTITUTIONS OF PLANT MATERIAL AND PLANTING INSTALLATION TO ACCOMMODATE POOR DRAINING SOILS.
- THE CONTRACTOR SHALL PROVIDE A SOIL TEST IN FOUR LOCATIONS AND PROVIDE RECOMMENDATIONS FOR AMENDMENTS BASED ON THE RESULTS. IMPROPER SOIL SHALL BE THE RESPONSIBILITY OF THE CONTRACTOR. THE CONTRACTOR SHALL RECTIFY ALL INCURRED DAMAGES AT NO ADDITIONAL COST TO THE OWNER.
- THE CONTRACTOR SHALL REVIEW THE SOILS REPORT ON FILE WITH THE OWNER.
- THE CONTRACTOR SHALL BE RESPONSIBLE TO REVIEW ALL ARCHITECTURAL AND ENGINEERING PLANS TO BECOME FAMILIAR WITH ALL SURFACE AND SUBSURFACE UTILITIES. THE CONTRACTOR SHALL FIELD VERIFY ALL BASE INFORMATION, INCLUDING GRADES, DIMENSIONING AND EXISTING CONDITIONS PRIOR TO INSTALLATION OF THE WORK.
- THE INSTALLATION OF PLANT MATERIAL SHALL BE VIEWED AS ACCEPTANCE BY THE CONTRACTOR OF EXISTING GRADES AS GIVEN TO HIM.
- THE CONTRACTOR SHALL PROVIDE TO THE LANDSCAPE ARCHITECT A WRITTEN LETTER OF ACCEPTABILITY OF GRADES. FAILURE TO DO SO WILL BE VIEWED AS AN ACCEPTANCE OF EXISTING GRADES BY THE CONTRACTOR.
- THE CONTRACTOR WILL BE REQUIRED TO SAND AREAS OF SOD THAT ARE NOT SMOOTHLY APPLIED TO ELIMINATE SMALL IRREGULARITIES IN GRADES. LARGE IRREGULARITIES IN GRADE WILL REQUIRE REGRADING & RESODDING.
- THE CONTRACTOR IS RESPONSIBLE FOR MAINTENANCE OF THE SITE INCLUDING ALL MOWING, EDGING, TRIMMING, PRUNING & SPRAYING OF PESTICIDES & FUNGICIDES UNTIL THE TIME OF FINAL ACCEPTANCE BY THE OWNER. IF PROJECT IS INSTALLED IN PHASES, OWNER WILL PROVIDE PHASING INFORMATION AT TIME OF BIDDING PROCESS.

IRRIGATION NOTES

- ALL LANDSCAPED AREAS SHALL BE IRRIGATED WITH A TIMED, AUTOMATIC UNDERGROUND SYSTEM UTILIZING POP-UP HEADS WHENEVER POSSIBLE TO PROVIDE 100% COVERAGE.
- DURING THE ESTABLISHMENT PERIOD WHICH IS A THREE-YEAR PERIOD FROM THE DATE OF INSTALLATION, EACH TREE SHALL BE WATERED REGULARLY IN A MANNER THAT ALLOWS PENETRATION INTO THE SOIL AROUND THE TREE. WATERING SHALL COMMENCE IMMEDIATELY UPON INSTALLATION AND PROVISION MADE FOR CONTINUED IRRIGATION TO REDUCE THE PROBABILITY OF SHOCK. SUCH IRRIGATION SHALL BE IN ACCORDANCE WITH ANY SFDM OR CITY REGULATIONS.
- WATER SOURCE FOR THIS PROJECT WILL BE RE-USE.
- A RAIN SENSOR SHALL BE PROVIDED.
- IRRIGATION SYSTEM SHALL ADHERE TO ALL LOCAL AND STATE IRRIGATION CODES AND REQUIREMENTS. AN IRRIGATION PLAN SHALL BE PROVIDED WITH THE LANDSCAPE COMPONENT OF THE SITE DEVELOPMENT PLAN.



100 West Lucerne Circle
Suite 401
Orlando, Florida 32801
Phone (407) 648-2225
www.fosterconant.com



10/12/21 @ 4 D SUBMITTAL

12/15/21 @ 4 D RESUBMITTAL

Project

VISTERA OF VENICE MULTIFAMILY PHASE 1

VENICE, FLORIDA

PLANT LIST & NOTES

Date: 10/12/2021

Scale:

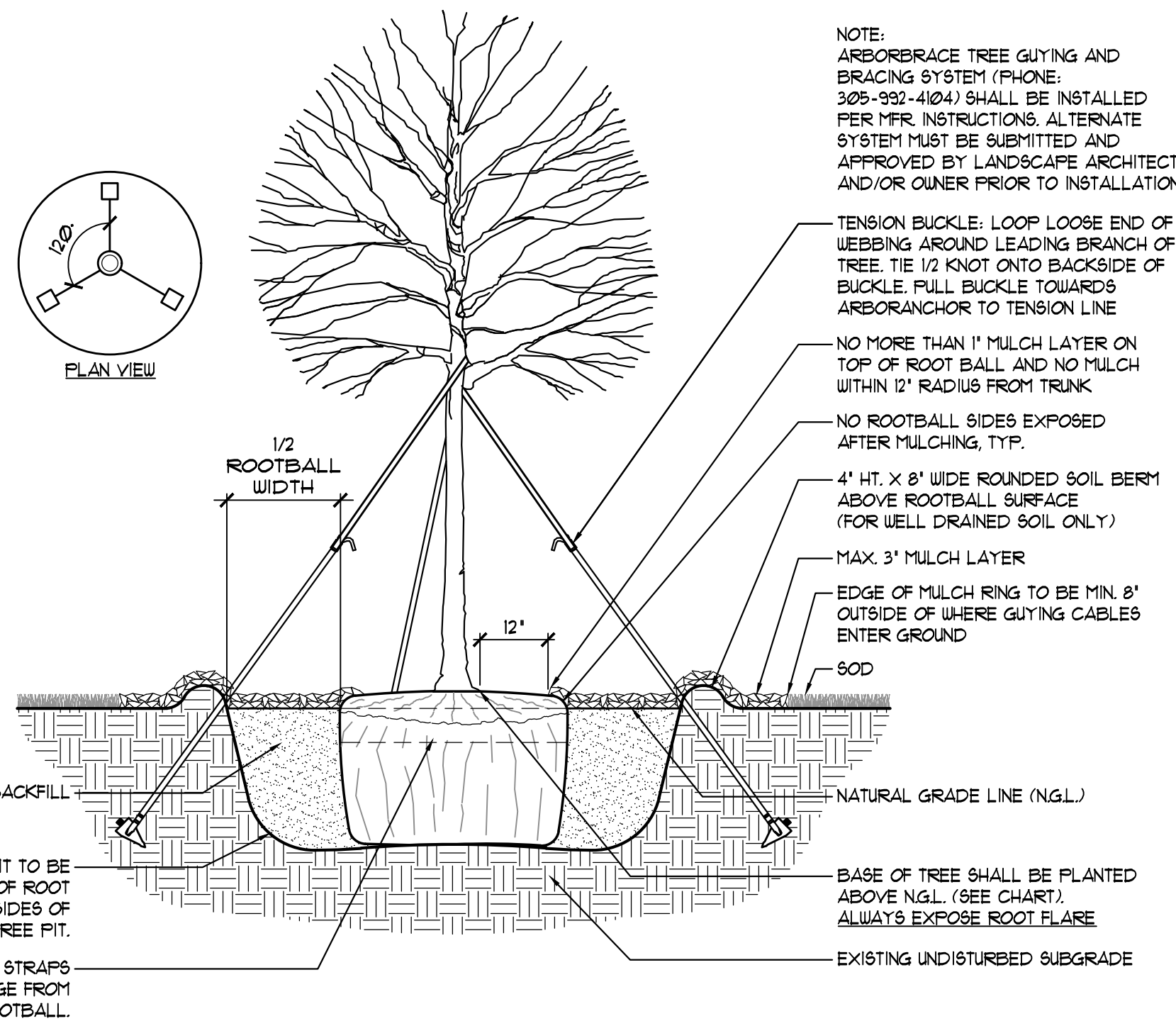
Drawn: D& Checked: MA

File Name: V16TL-305N.DWG

North

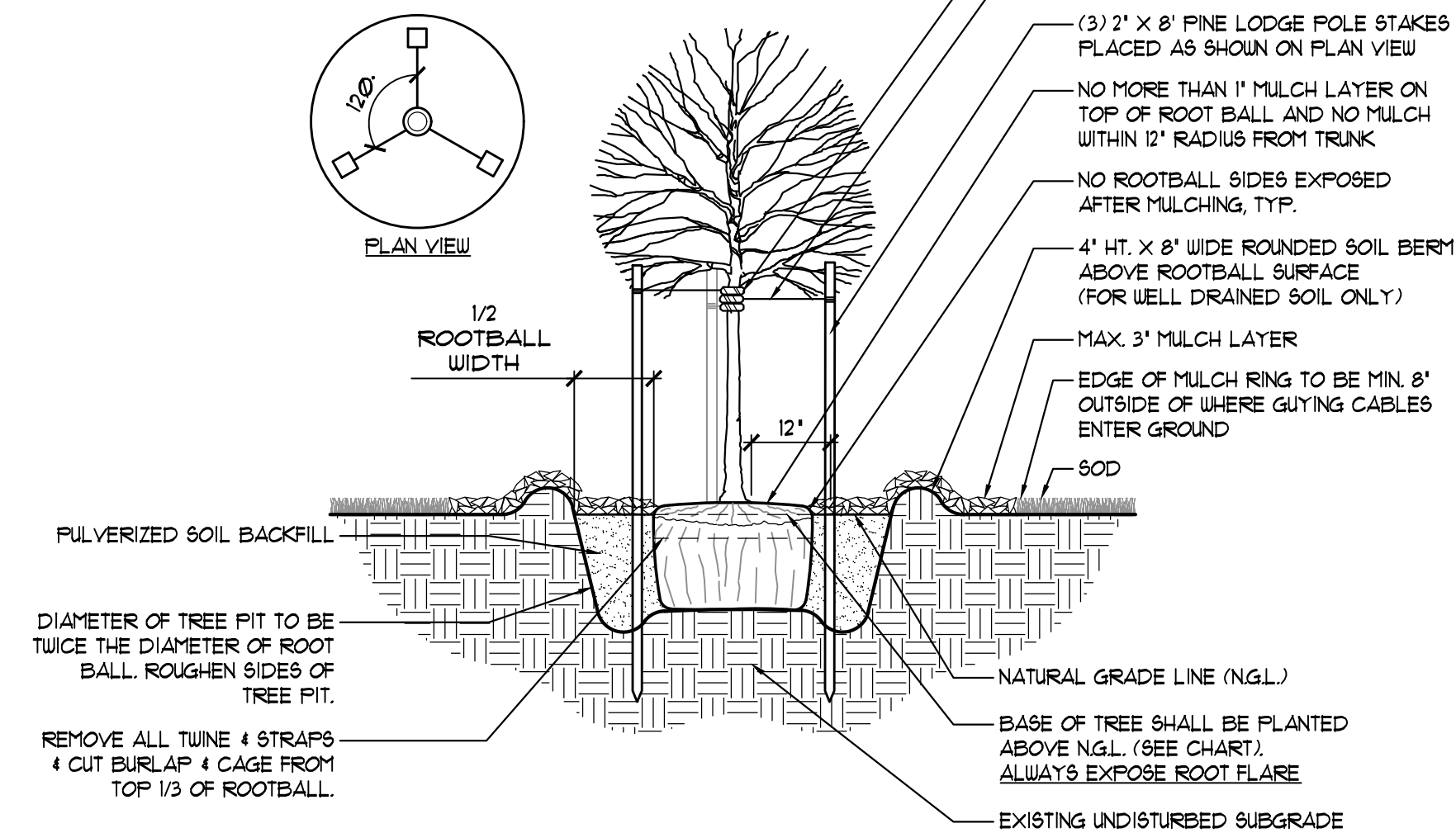
Sheet

L-305N



LARGE TREE PLANTING DETAIL - BALL & BURLAP

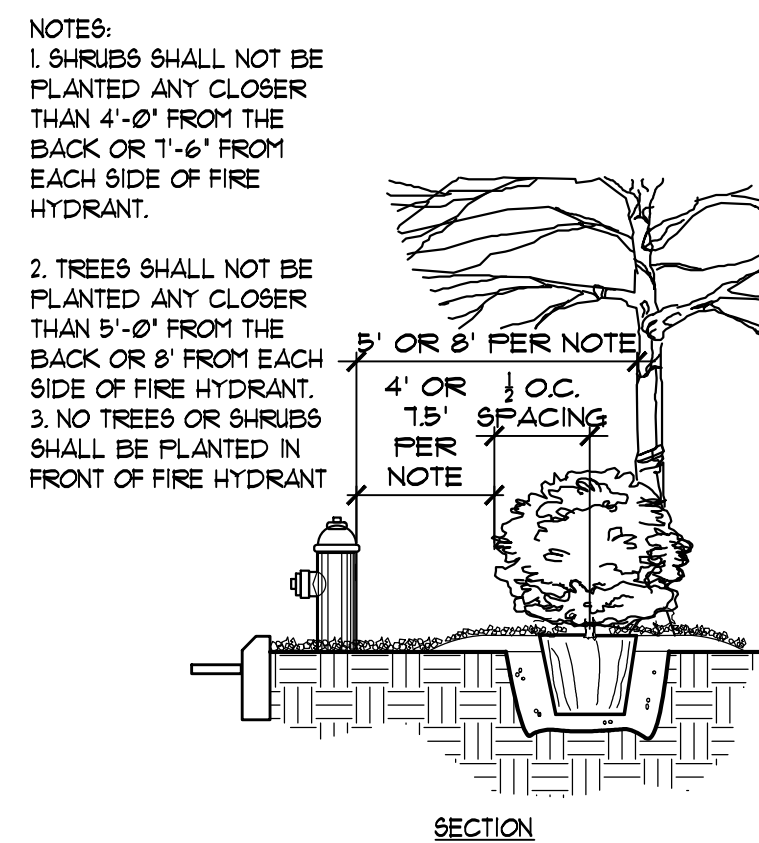
SCALE: N.T.S.



SMALL TREE PLANTING DETAIL - CONTAINER

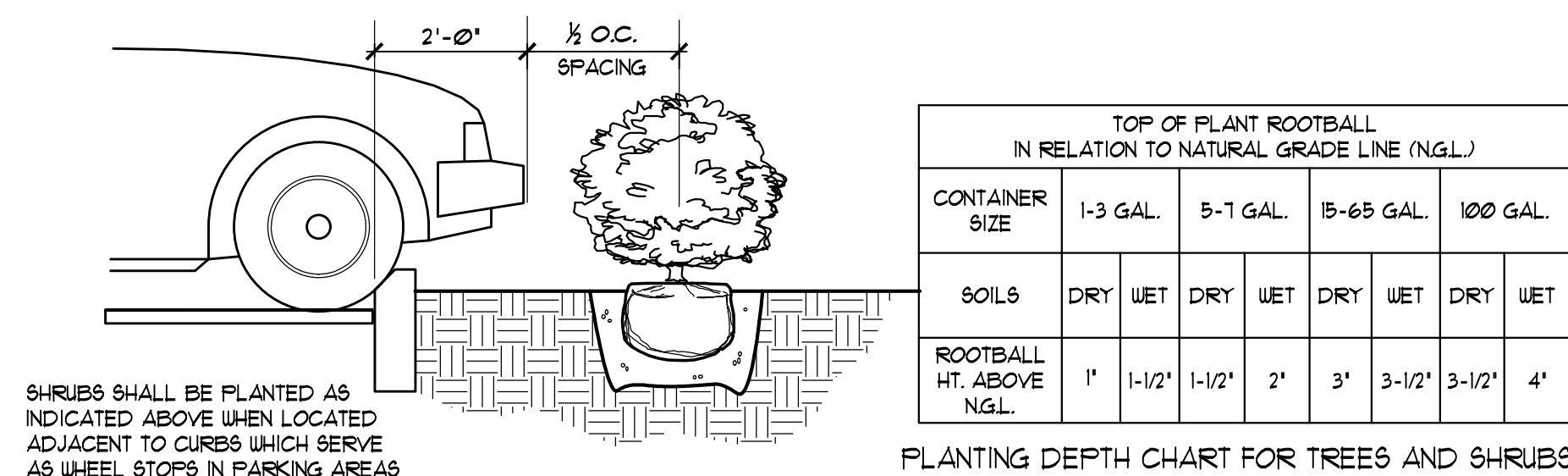
(NOTE: TO BE UTILIZED FOR TREES 10' IN HEIGHT AND UNDER)

SCALE: N.T.S.



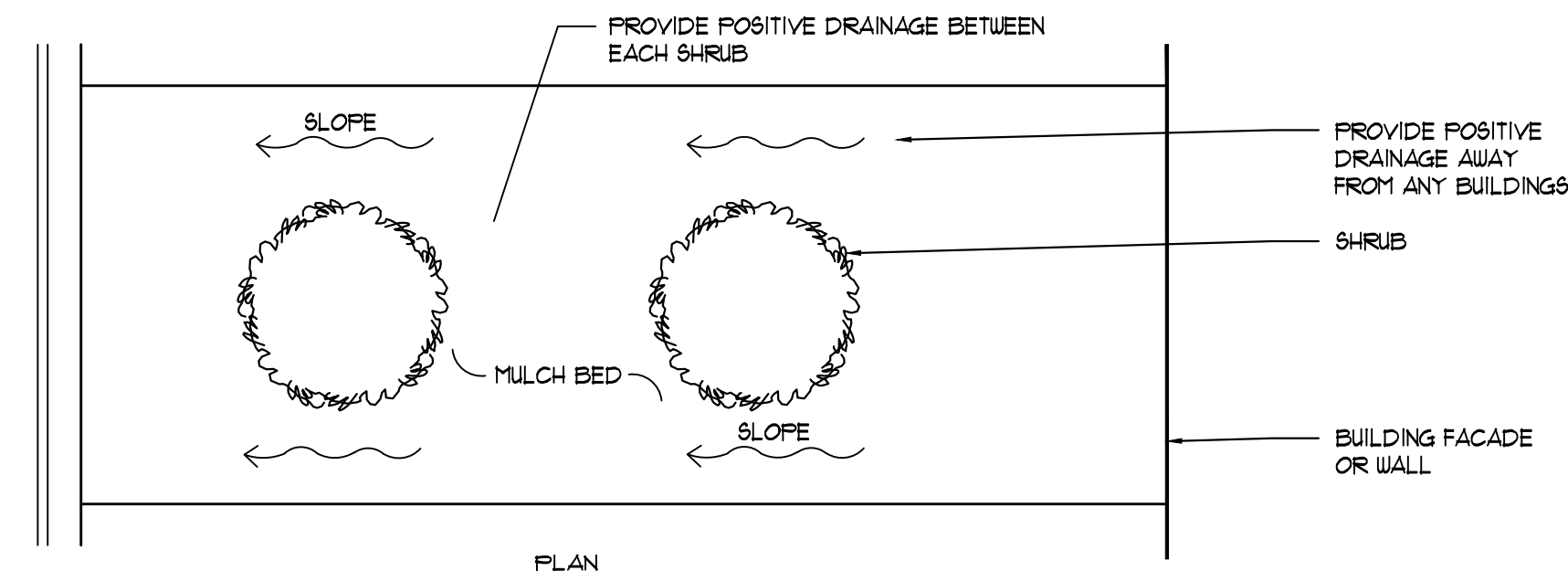
PLANTING SHRUBS AND TREES ADJACENT TO HYDRANT

SCALE: N.T.S.



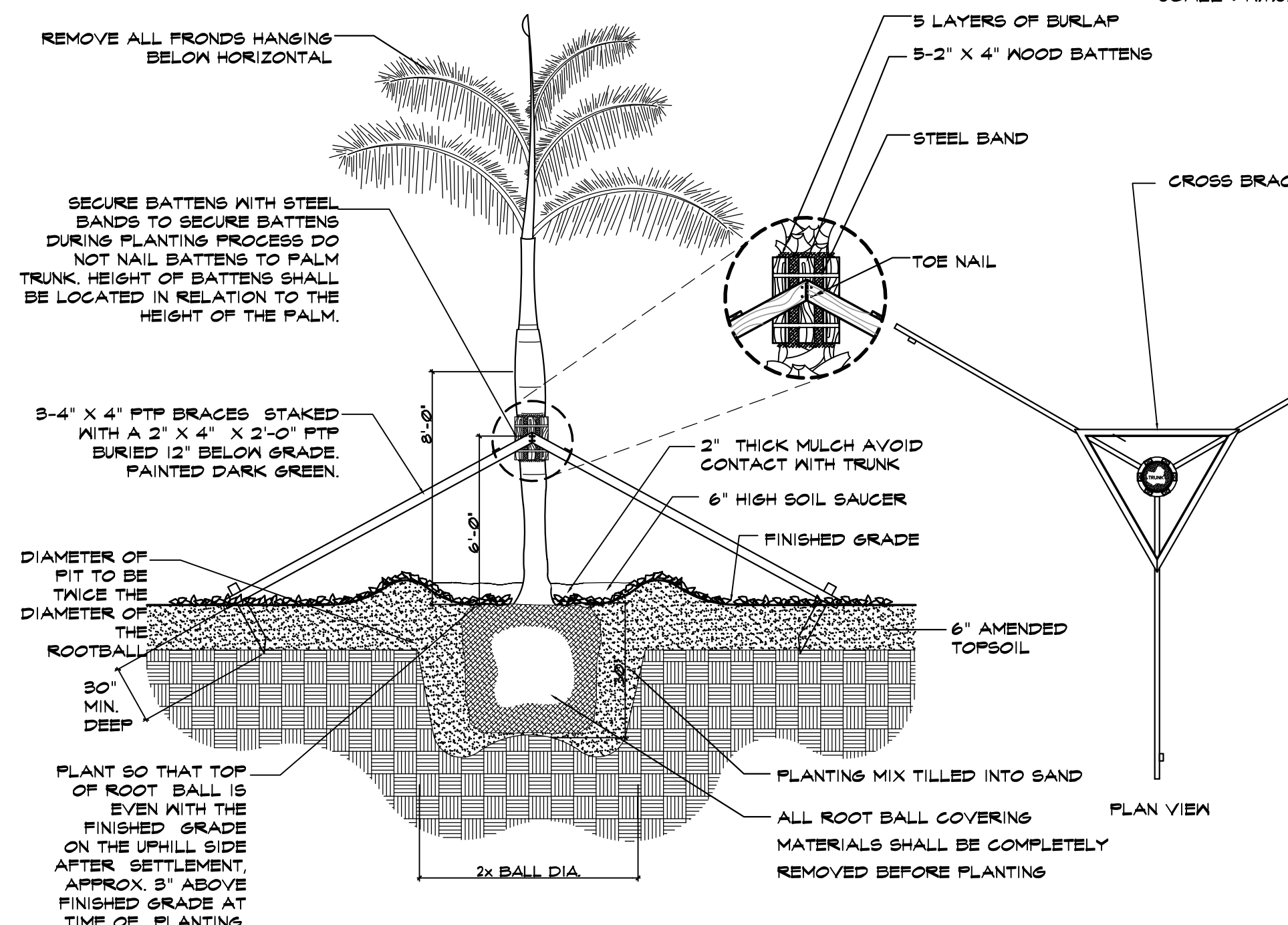
SHRUB PLANTING ADJACENT TO CURBS DETAIL

SCALE: N.T.S.



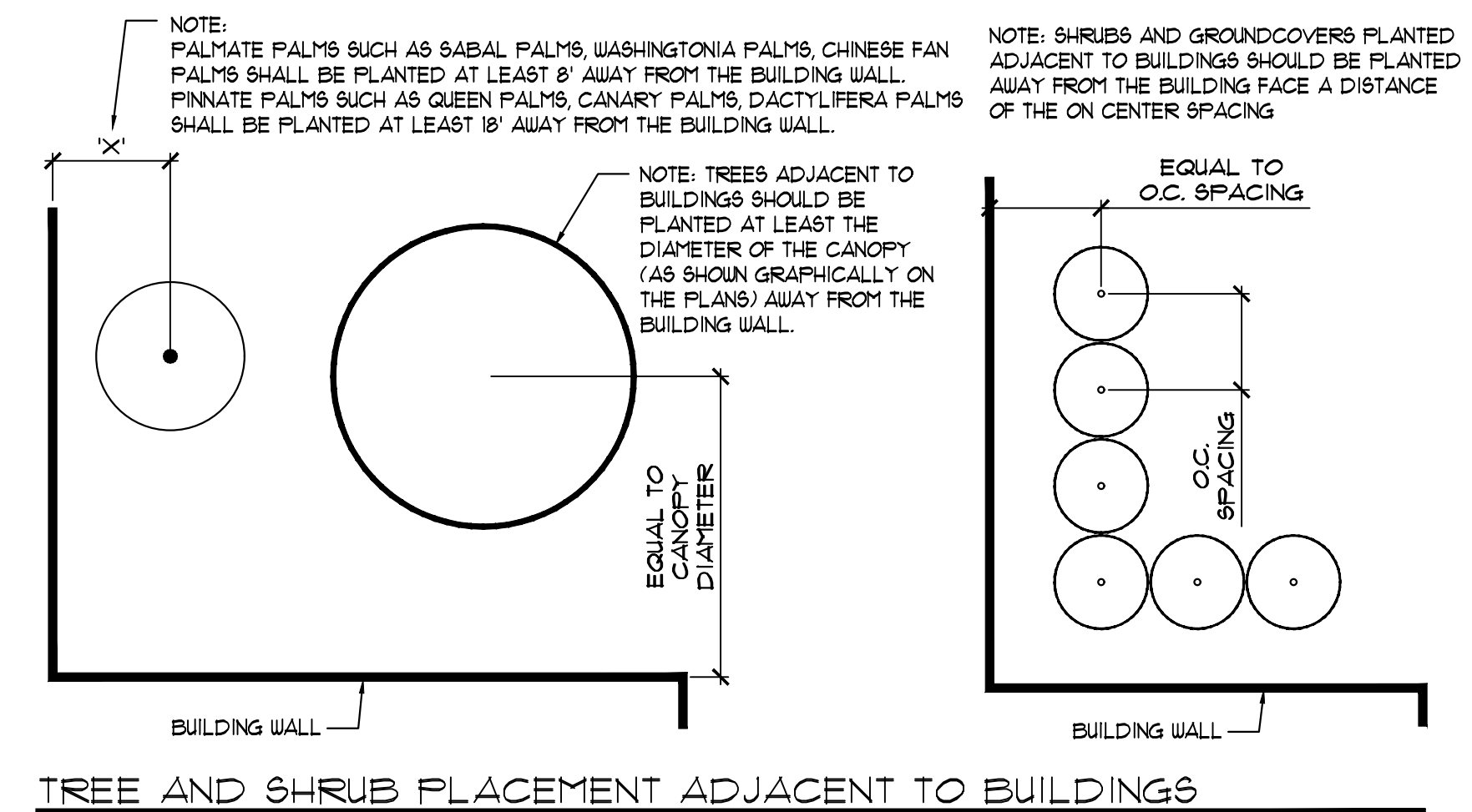
SHRUB PLANTING DETAIL

SCALE: N.T.S.



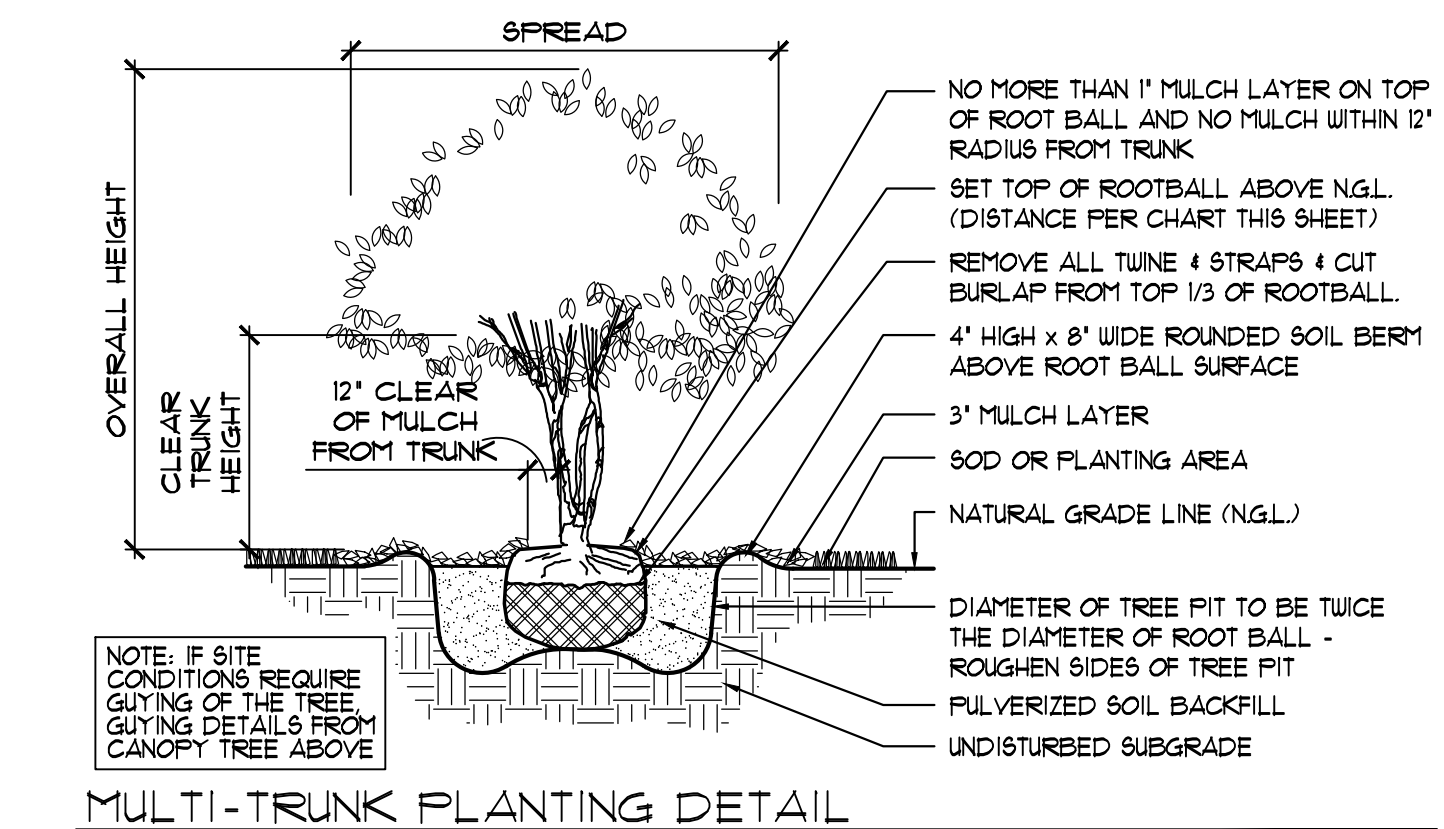
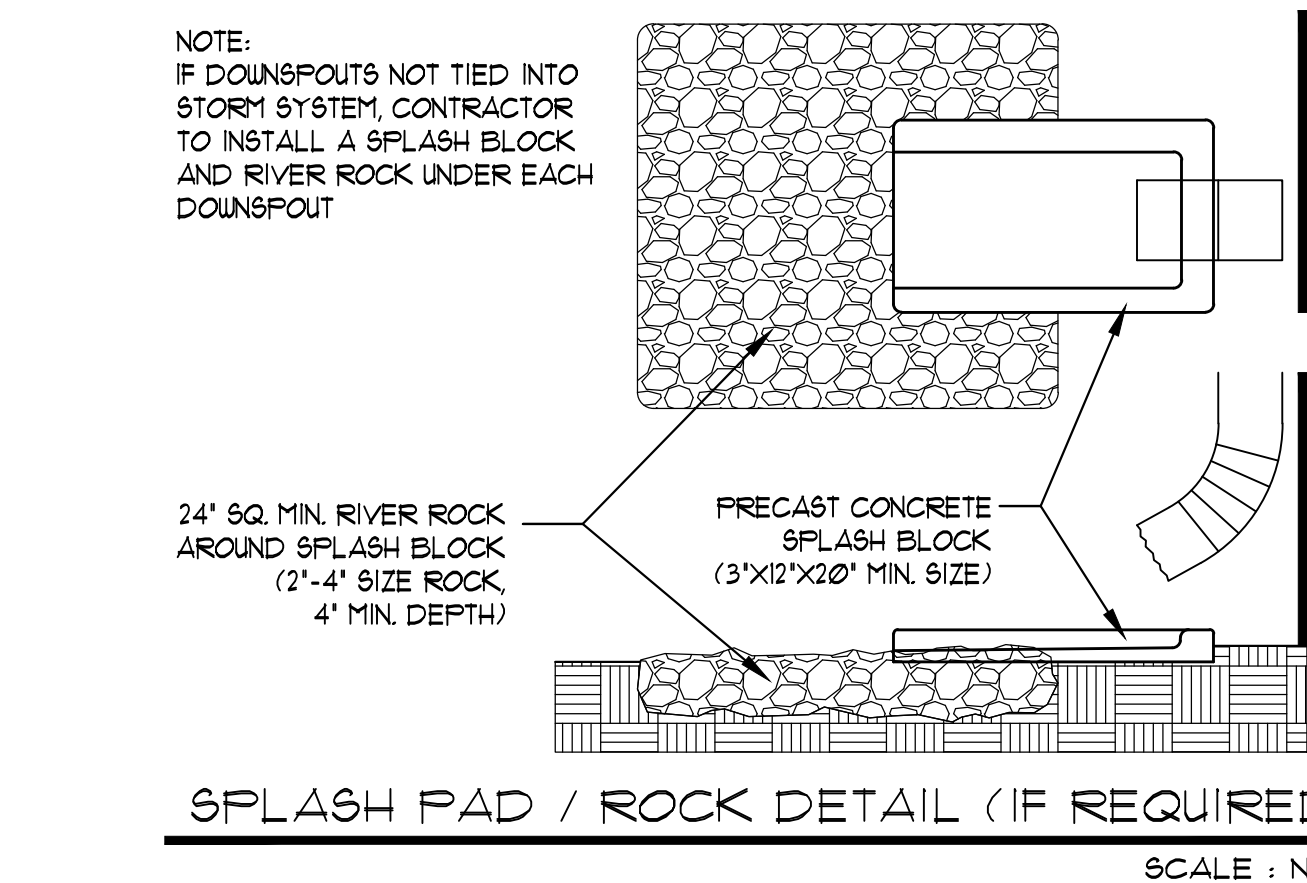
ROYAL PALM DETAIL

SCALE: N.T.S.



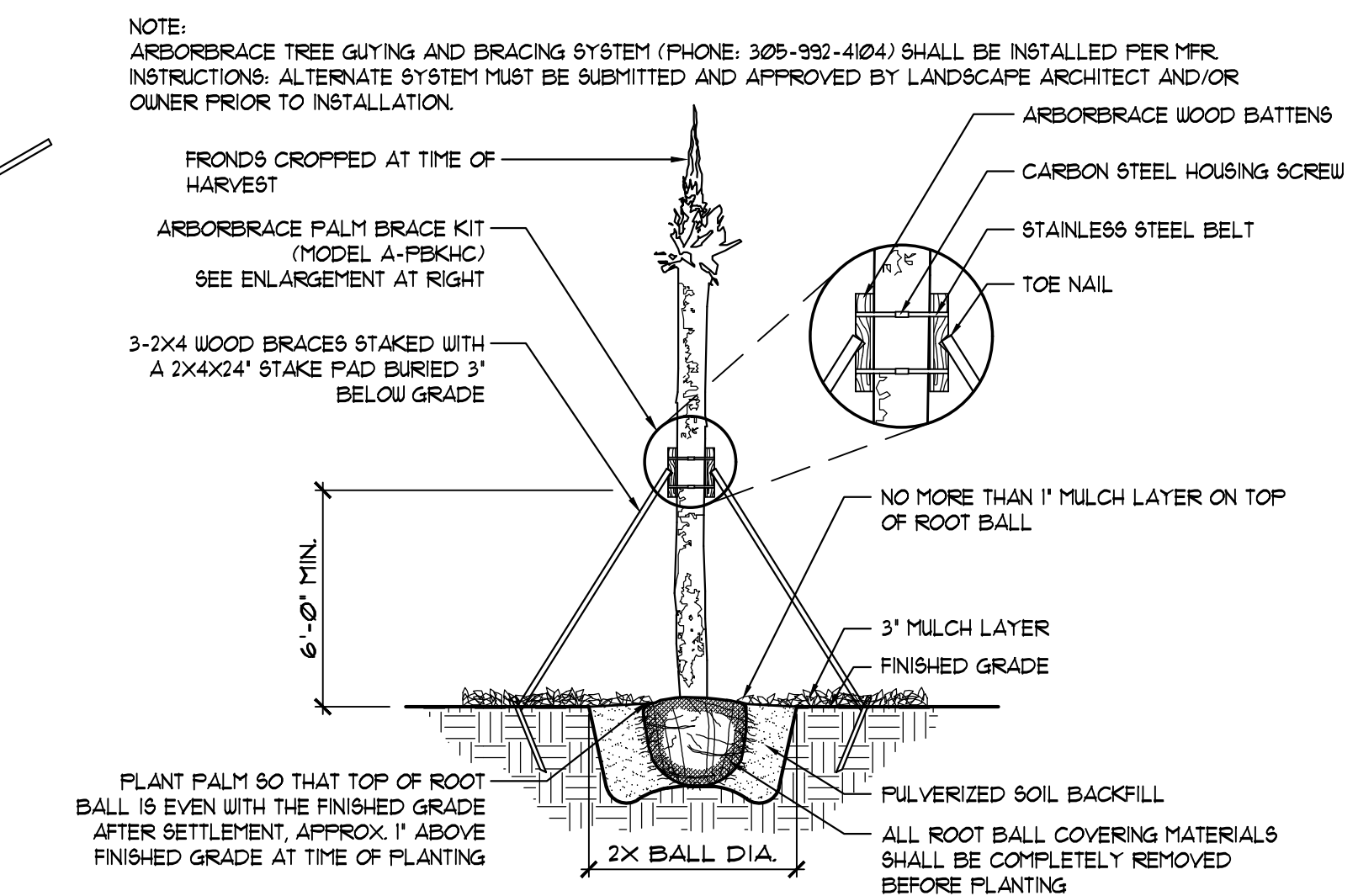
TREE AND SHRUB PLACEMENT ADJACENT TO BUILDINGS

SCALE: N.T.S.



MULTI-TRUNK PLANTING DETAIL

SCALE: N.T.S.



SABAL PALM AND PALMS PLANTING DETAIL

SCALE: N.T.S.