



# MEMORANDUM

## City of Venice

### Police Department

---

TO: Ed Lavallo, City Manager

FROM: Chief Mattmuller, Police

DATE: February 18, 2020

COUNCIL APPROVAL: Yes

MEETING DATE: February 25, 2020

STRATEGIC PLAN GOAL: Upgrade and Maintain City Infrastructure and Facilities

SUBJECT: Approval to Purchase Spacesaver Storage Lockers for the City of Venice Public Safety Facility

---

Background: On June 11, 2019, City Council Approved Amendment #2 for the Public Safety Facility in the amount of \$9,735,934 fulfilling the total Guaranteed Maximum Price (GMP) for construction phase services of \$12,013,492. Certain scopes of work were not included in that GMP and solicited separately by the City, with the intention of the City saving a mark-up by the Construction Manager at Risk (CM). In particular, much of the furniture, fixtures, and equipment (FF&E) were not included in Amendment #2.

The City received a proposal from Patterson-Pope to provide and install lockers, evidence storage, armory storage, and miscellaneous storage units for the Public Safety Facility in the amount of \$238,856. The equipment is manufactured by Spacesaver and offered under the Sourcewell (formerly NJPA) Contract No. 31715-KII KI Spacesaver Storage Systems/Patterson Pope.

Purchases from Cooperative Purchasing Agreements are exempted from competitive bidding per section 2-224 of the City's Procurement Code.

**Requested Action:** Approval to Purchase Spacesaver Storage Lockers for the City of Venice Public Safety Facility from Patterson Pope in the amount of \$238,856.

If for an agenda item, this document and any associated backup created by City of Venice staff has been reviewed for ADA compliance: Yes

City Attorney Review/Approved: Yes

Risk Management Review: Yes

Finance Department Review/Approved: Yes

Funds Availability (account number): 303-1001-521.64-00 GOPS17

**ORIGINAL(S) ATTACHED:** Proposal from Patterson Pope



**Proposal for  
City of Venice Police Department**

Venice, FL

February 6, 2020

Prepared by:  
Tom Kelly  
Regional Account Manager  
**Patterson Pope**

**PATTERSON POPE, INC.**

Because of needs for greater storage capacity and higher costs of construction, space and labor, government, business and industry are turning to storage concepts, which provide not only lower dollar investment, but savings in floor space, increased storage capacity and increased productivity by personnel. SPACESAVER STORAGE SYSTEMS products have become one of the best concepts available today to provide a unique opportunity to gain these benefits.

With over 85,000 successful installations to date, Spacesaver has more installations than all other mobile system manufacturers combined. The markets acceptance of Spacesaver is directly related to our product design flexibility, engineering support, quality, safety features, on-time delivery, installation, warranty and service, and a total dedication to each customer's unique needs and project goals.

Spacesaver distributes its products through a network of authorized exclusive Spacesaver Area Contractors. As your exclusive local area contractor, we at the PATTERSON POPE are proud to have represented Spacesaver since 1967. Our services include sales, design and engineering, installation, service and file relocation capabilities. As part of the Spacesaver Group, we are required to receive extensive product, installation, and service training in order to qualify to be part of the Spacesaver Group. Patterson Pope's western FL location is:

Patterson Pope, Inc.  
Tom Kelly  
14502 N. Dale Mabry Hwy suite 200  
Tampa, FL 33618  
Phone: (813) 960-4830 or 800 432-6230  
Cell: 813-362-7086  
Fax: (813) 960-4836

February 6, 2020

City of Venice Police Department  
1575 East Venice Ave  
Venice, FL. 34292

Attn: Eric Hill, Rob Goodson, Andy Leisenring

Re: Proposal 307304 Spacesaver storage & lockers

Dear Eric, Rob & Andy:

In accordance with the specifications, surveys, field verification, meetings, conversations, preliminary plans and budgets, we are pleased to submit our proposal.

This proposal is for Spacesaver storage and locker systems for the new Public Safety Facility.

We will be providing these systems at our most favored pricing, which includes the discounts offered on the authorized Sourcewell Contract No. 31715- KII

KI /Spacesaver Storage Systems / Patterson Pope

If you have any questions while you review this proposal, or if you feel that we can more adequately address your needs, please call.

Thank you for allowing us to put our 50 years of experience to work for you as we have for our many Public Safety clients.

We look forward to helping you to complete your project successfully.

Sincerely,

A handwritten signature in black ink that reads "Tom Kelly". The signature is fluid and cursive, with a long horizontal stroke extending to the right.

Tom Kelly

### **Systems provisions**

We will provide Spacesaver storage systems and lockers per our drawing and elevations along with relocating your existing bulk evidence high density mobile storage system.

These systems provide maximum space utilization, capacity, safety, security and well-being for the officers and staff of your Department.

The areas included are:

Men's lockers 178 including GFI outlets and ada benches, padlock hasps

Women lockers 153 including GFI outlets and ada benches, padlock hasps

Duty bag lockers corridor 178 padlock hasps

Evidence lockers 146

Bulk evidence hd system 138 -existing system relocation and modifications.

Wall mount handgun lockers 126 & 111 keyed

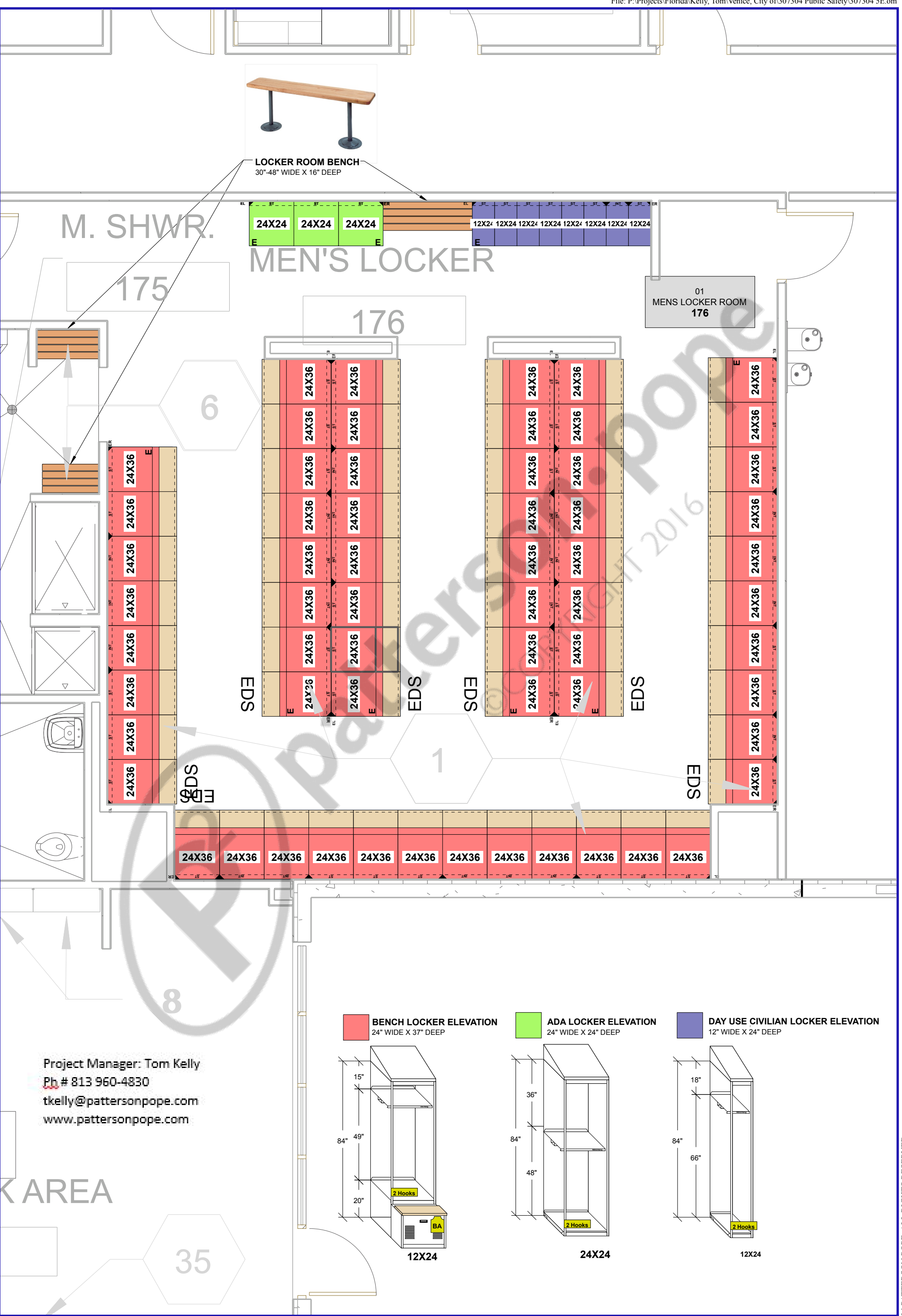
Armory 157

Weapons evidence 135

Narc evidence 134 including 96 evidence totes for envelopes

Cash valuables 137 including 42 evidence totes for envelopes (Combined total of 138 totes.)

Patrol equip 186 Day Use lockers. Padlock hasp



Project Name: THE CITY OF VENICE - PUBLIC SAFETY

Salesperson:  
KELLY,TOM

Scale  
1:45

Rev level:

Project #:  
307304 5E  
Drawn by:  
C. MCGEE  
Date Printed:  
01/28/2020

APPROVAL  
This drawing Approved By:  
\_\_\_\_\_  
Dated \_\_\_\_\_

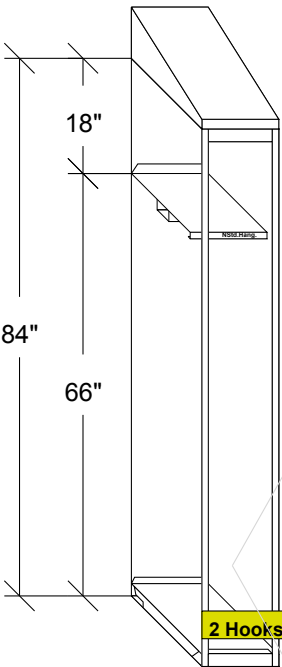
Project Manager: Tom Kelly  
Ph # 813 960-4830  
tkelly@pattersonpope.com  
www.pattersonpope.com



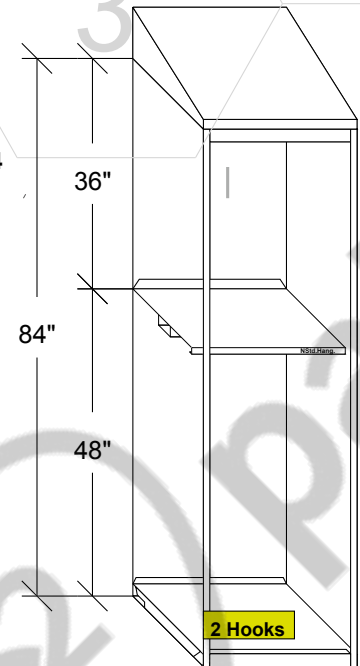
LOCKER ROOM BENCH  
60" WIDE X 16" DEEP



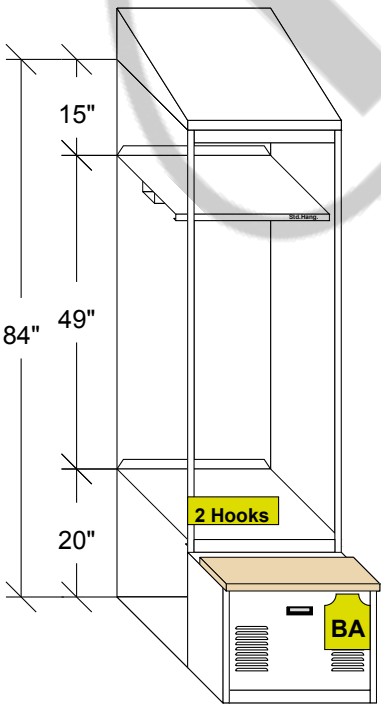
DAY USE CIVILIAN LOCKER ELEVATION  
12" WIDE X 24" DEEP



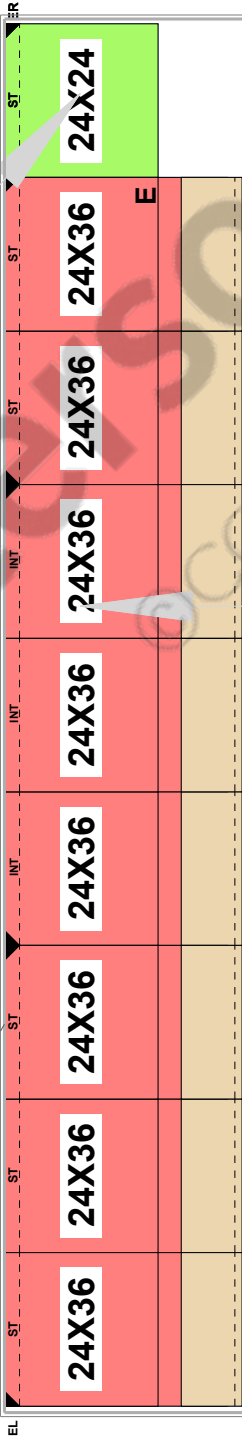
ADA LOCKER ELEVATION  
24" WIDE X 24" DEEP



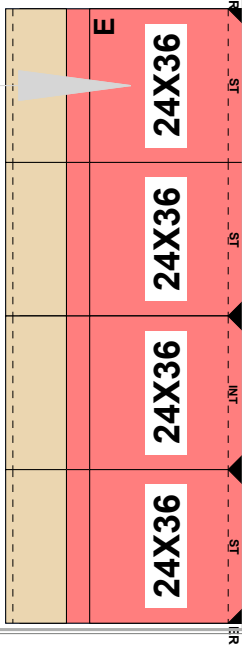
BENCH LOCKER ELEVATION  
24" WIDE X 37.125" DEEP



24X24

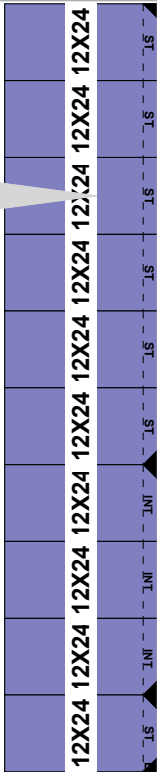


EDS



EDS

01  
WOMENS LOCKER ROOM  
153



Project Name: THE CITY OF VENICE - PUBLIC SAFETY

Salesperson:  
KELLY,TOM

Scale  
1:30

Rev level:

Project #:  
307304 5E  
Drawn by:  
C. MCGEE  
Date Printed:  
01/28/2020

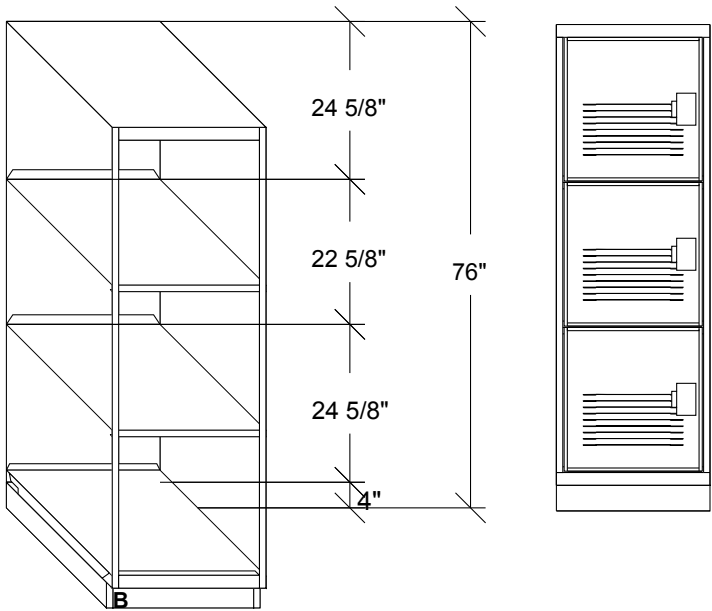
APPROVAL  
This drawing Approved By:  
\_\_\_\_\_  
Dated \_\_\_\_\_



COPY/ PRINT

205

THREE TIER LOCKER ELEVATION  
24" WIDE X 36" DEEP



24X36

CRDR 6

178

02  
DUTY BACK CORRIDOR  
178

5

Project Manager: Tom Kelly  
Ph # 813 960-4830  
tkelly@pattersonpoppe.com  
www.pattersonpoppe.com



Project Name: THE CITY OF VENICE - PUBLIC SAFETY

Salesperson:  
KELLY,TOM

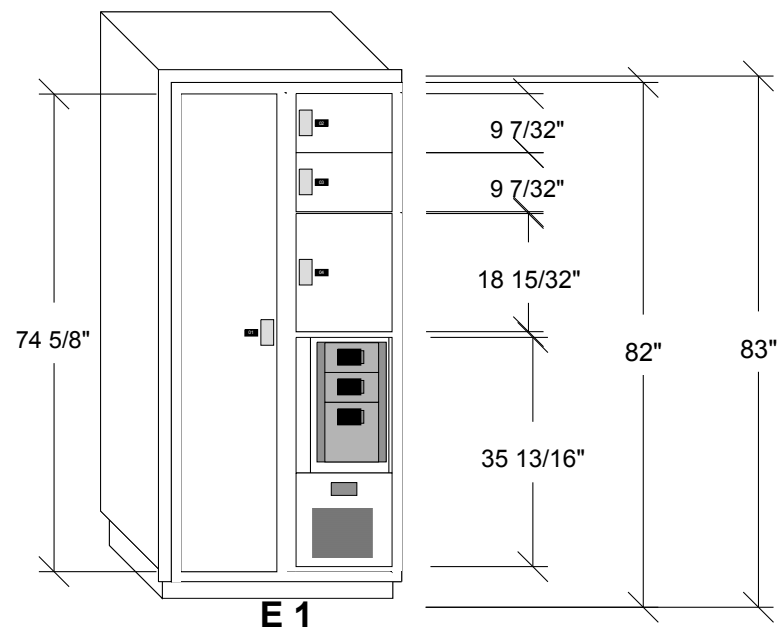
Scale  
1:30

Rev level:

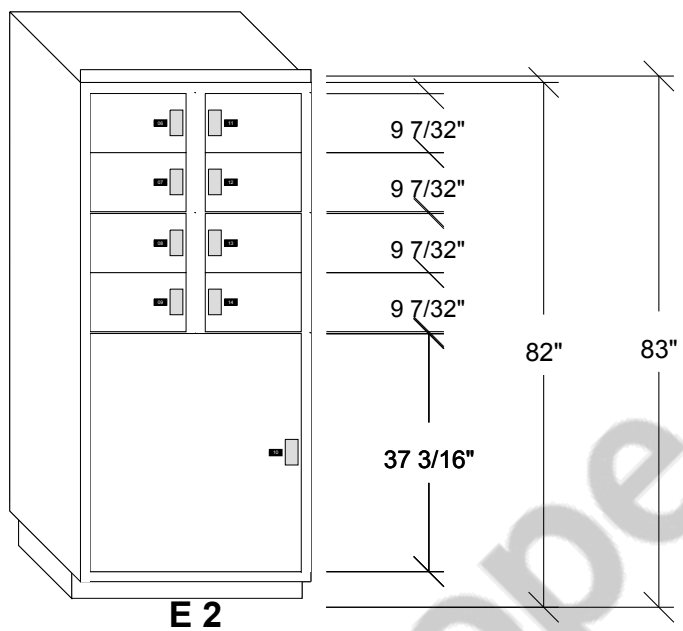
Project #:  
307304 5E  
Drawn by:  
C. MCGEE  
Date Printed:  
01/28/2020

APPROVAL  
This drawing Approved By:  
\_\_\_\_\_  
Dated \_\_\_\_\_

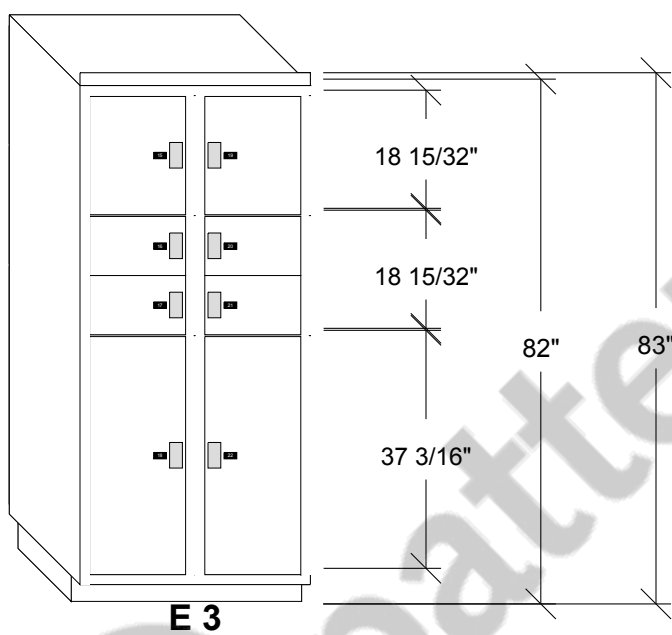
EVIDENCE LOCKER ELEVATION



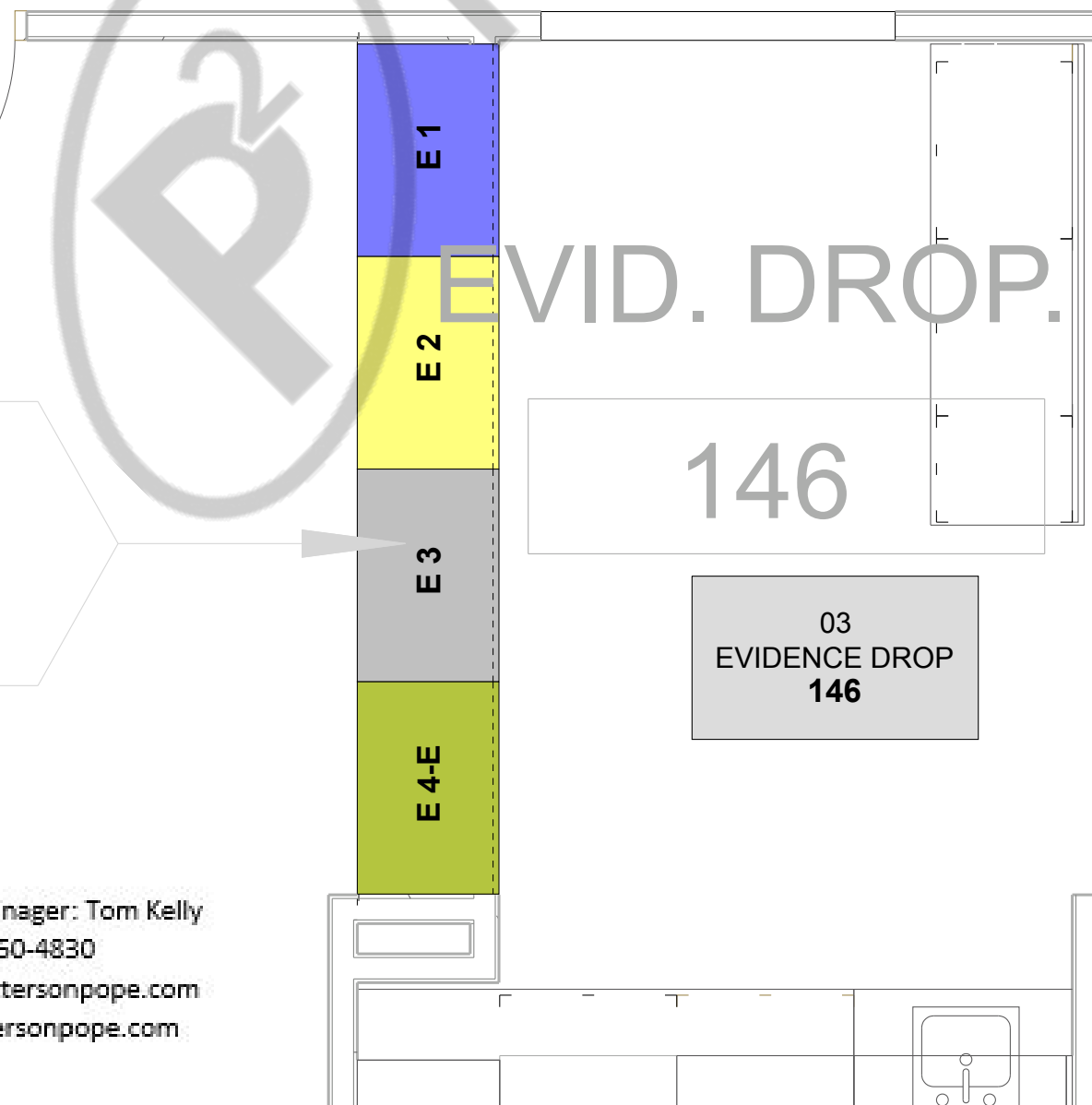
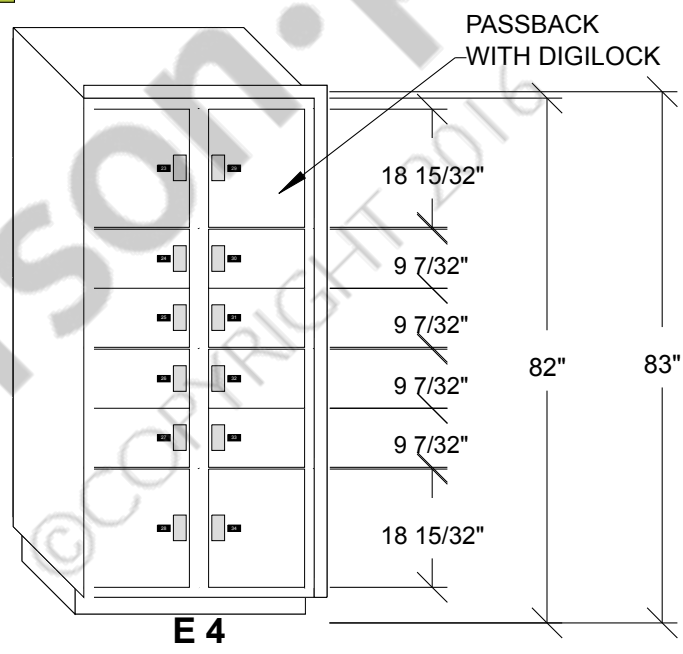
EVIDENCE LOCKER ELEVATION



EVIDENCE LOCKER ELEVATION



EVIDENCE LOCKER ELEVATION



Project Manager: Tom Kelly  
Ph # 813 960-4830  
tkelly@pattersonpope.com  
www.pattersonpope.com



Project Name: THE CITY OF VENICE - PUBLIC SAFETY

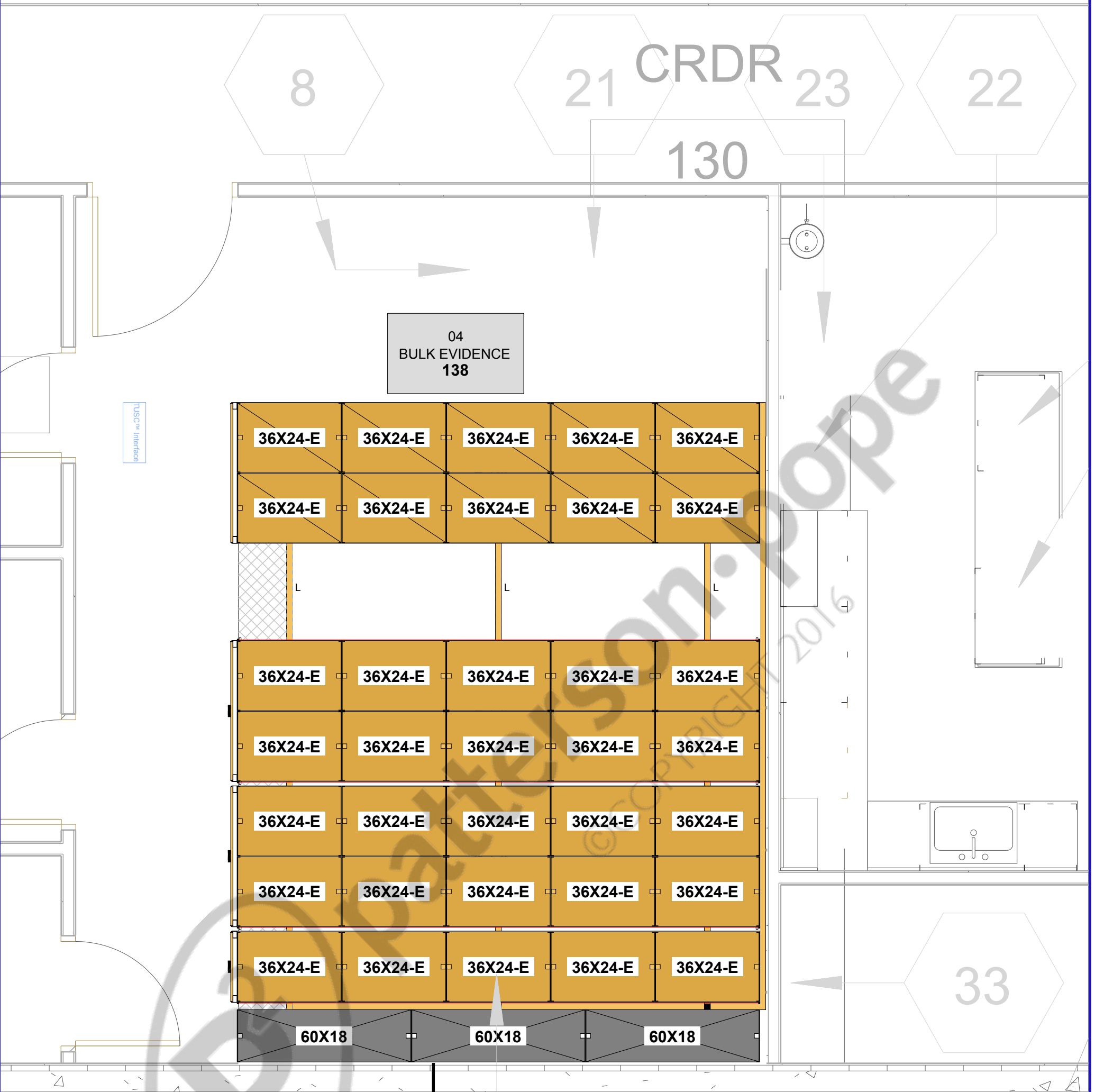
Salesperson:  
KELLY,TOM

Scale  
1:30

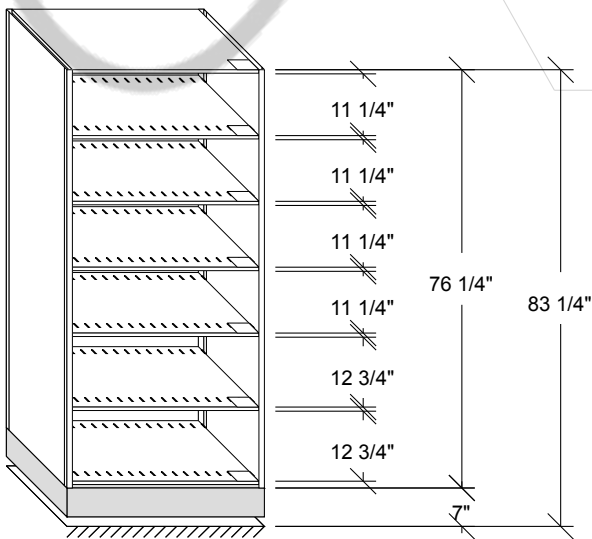
Rev level:

Project #:  
307304 5E  
Drawn by:  
C. MCGEE  
Date Printed:  
01/28/2020

APPROVAL  
This drawing Approved By:  
\_\_\_\_\_  
Dated \_\_\_\_\_

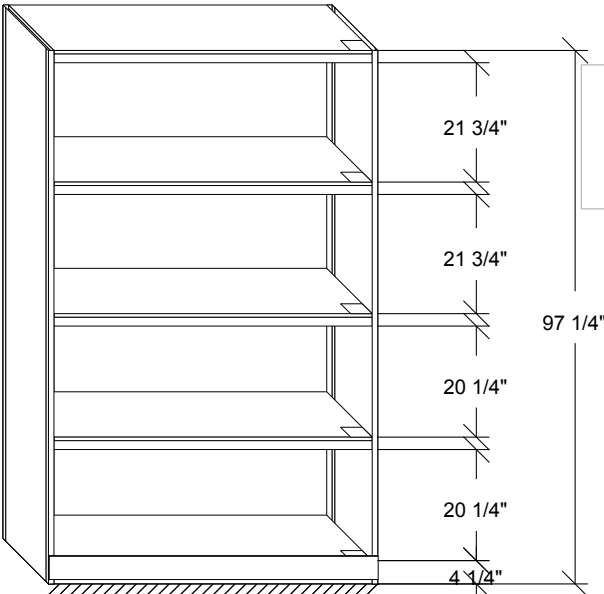


**BULK STORAGE SHELVING ELEVATION**  
36" WIDE X 24" DEEP



**36X24**

**NEW HEAVY DUTY STORAGE SHELVING**  
60"W X 18"D



**60X18**

Project Manager: Tom Kelly  
Ph # 813 960-4830  
tkelly@pattersonpope.com  
www.pattersonpope.com



Project Name: THE CITY OF VENICE - PUBLIC SAFETY

Salesperson:  
KELLY,TOM

Scale  
1:35

Rev level:

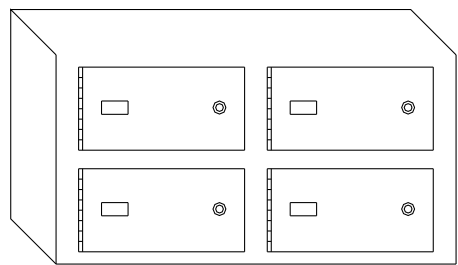
Project #:  
307304 5E  
Drawn by:  
C. MCGEE  
Date Printed:  
01/28/2020

APPROVAL  
This drawing Approved By:  
\_\_\_\_\_  
Dated \_\_\_\_\_

CDR

111

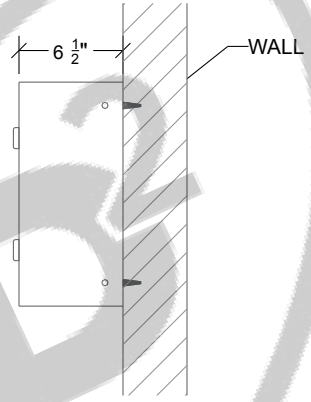
 **TYPICAL HANDGUN LOCKER ELEVATION**  
25" WIDE X 6.5" DEEP



14 1/8"

**25X6.5**

**25X6.5**



CRDR 2

126

Project Manager: Tom Kelly  
Ph # 813 960-4830  
tkelly@pattersonpope.com  
www.pattersonpope.com



Project Name: THE CITY OF VENICE - PUBLIC SAFETY

Salesperson:  
KELLY,TOM

Scale  
1" = 1'

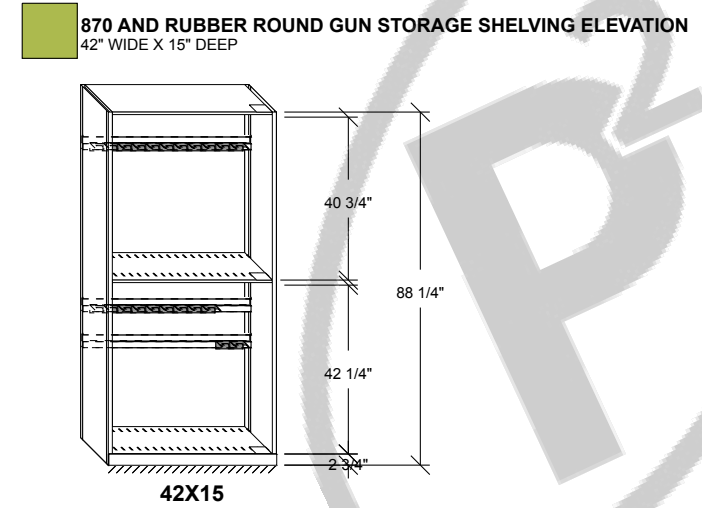
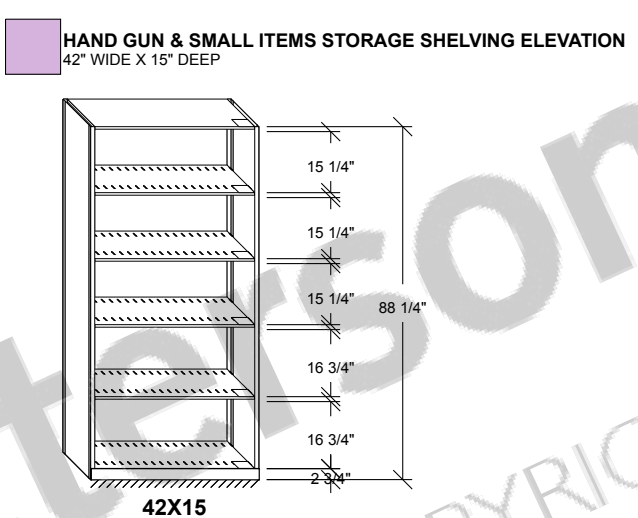
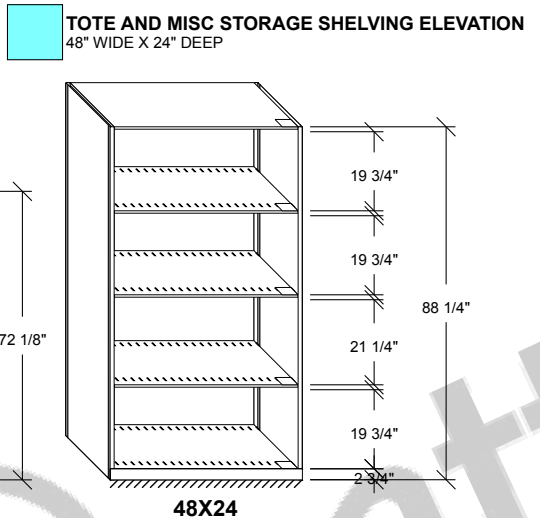
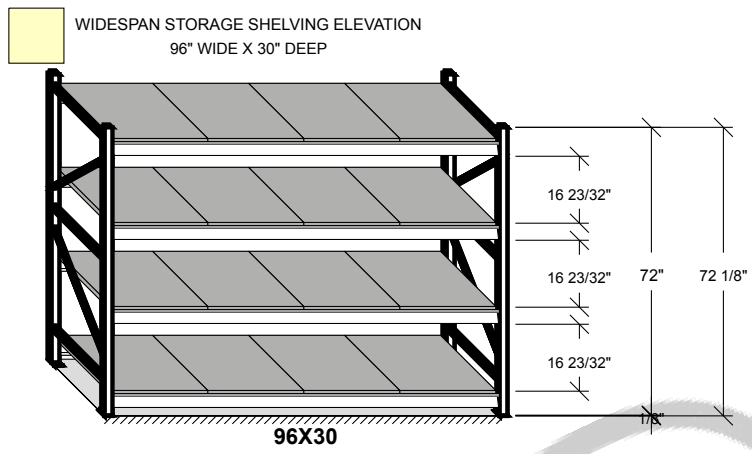
Rev level:

Project #:  
307304 5E  
Drawn by:  
C. MCGEE  
Date Printed:  
01/28/2020

APPROVAL  
This drawing Approved By:  
\_\_\_\_\_  
Dated \_\_\_\_\_

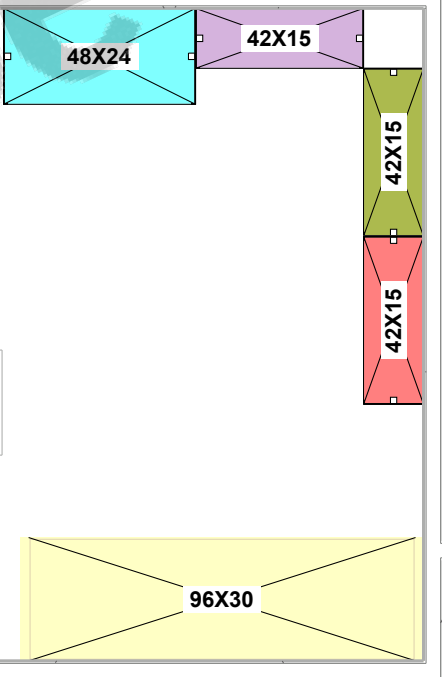
SUPER. OFFICE

143



ARMORY

157



CRD

15

BLDG. STOR.

160

Project Manager: Tom Kelly  
Ph # 813 960-4830  
tkelly@pattersonpope.com  
www.pattersonpope.com



Project Name: THE CITY OF VENICE - PUBLIC SAFETY

Salesperson:  
KELLY,TOM

Scale  
1/4" = 1'

Rev level:

Project #:  
307304 4E  
Drawn by:  
C. MCGEE  
Date Printed:  
01/28/2020

APPROVAL  
This drawing Approved By:  
\_\_\_\_\_  
Dated \_\_\_\_\_

LG. EVID. STOR.

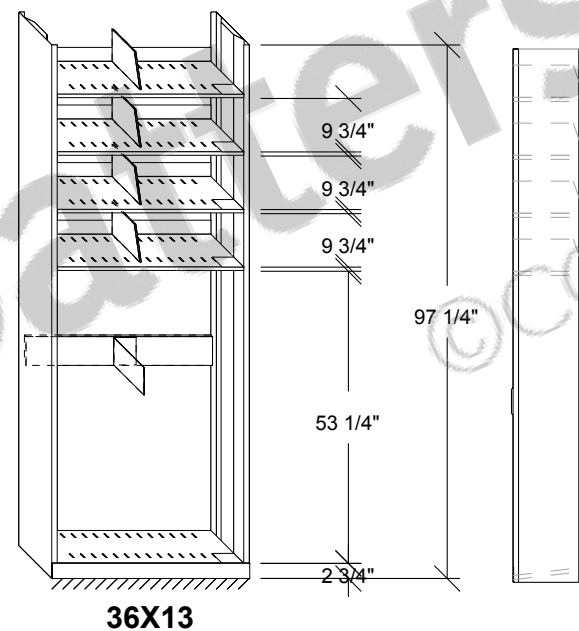
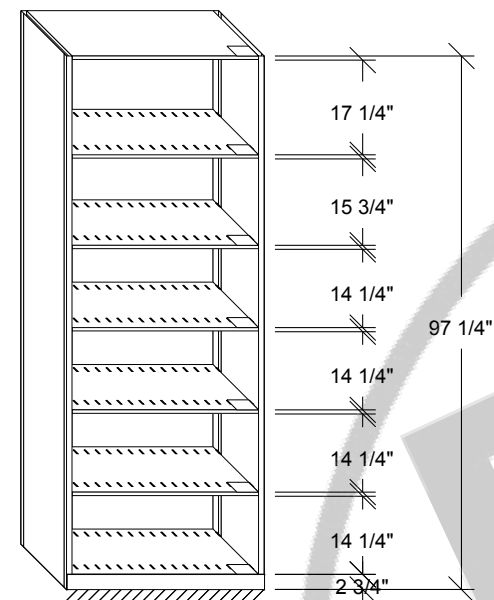
131

NARC.

134

**NARCOTICS AND CASH / VALUABLES STORAGE SHELVING ELEVATION**  
36"-48" WIDE X 18" DEEP

**WEAPONS AND MISC STORAGE SHELVING ELEVATION**  
36"-48" WIDE X 13" DEEP



36X13

Project Manager: Tom Kelly  
Ph # 813 960-4830  
tkelly@pattersonpope.com  
www.pattersonpope.com

72X18

36X18

48X18

72X18

36X13

48X13

WPNS.

135

36X13

36X18

48X18

137

C/V



Project Name: THE CITY OF VENICE - PUBLIC SAFETY

Salesperson:  
KELLY,TOM

Scale  
1:35

Rev level:

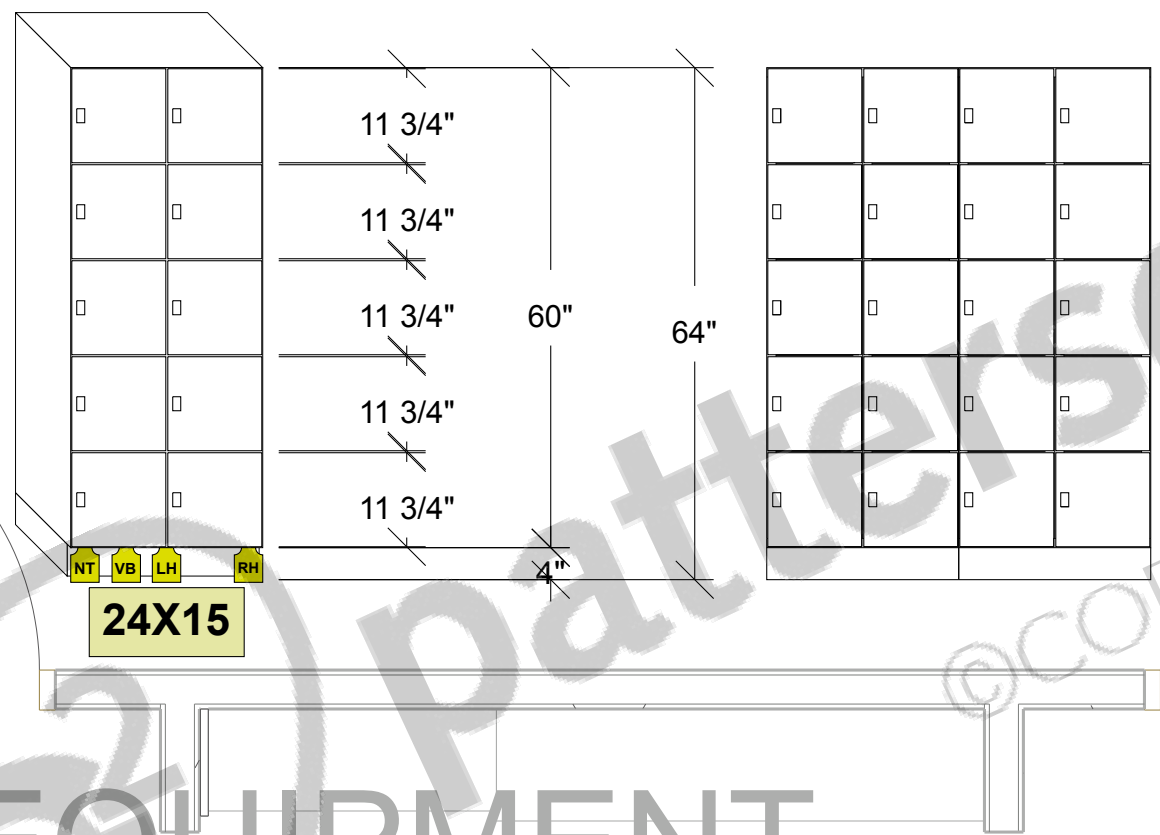
Project #:  
307304 4E  
Drawn by:  
C. MCGEE  
Date Printed:  
01/28/2020

APPROVAL  
This drawing Approved By:  
\_\_\_\_\_  
Dated \_\_\_\_\_



2

**TYPICAL 5 TIER DAY USE LOCKER ELEVATION** padlock hasps  
24" WIDE X 15" DEEP (12" WIDE COLUMN - 2 COLUMNS PER SECTION)



24X15  
24X15

PREP. RM. MON

185

PATROL EQUIPMENT

186

CRDR 7

190



Project Manager: Tom Kelly  
Ph # 813 960-4830  
tkelly@pattersonpope.com  
www.pattersonpope.com



Project Name: THE CITY OF VENICE - PUBLIC SAFETY

Salesperson:  
KELLY,TOM

Scale  
1/2" = 1'

Rev level:

Project #:  
307304 4E  
Drawn by:  
C. MCGEE  
Date Printed:  
01/28/2020

APPROVAL  
This drawing Approved By:  
\_\_\_\_\_  
Dated \_\_\_\_\_



**patterson•pope**  
SPACE MADE SIMPLE.

Spacesaver®

# STANDARD COLORS

POWDER COAT **PAINT FINISHES**

This is a supplemental color chart of the standard color offerings in both smooth and textured finishes available across all product lines. For a complete offering of all colors please contact your Spacesaver Sales Representative to refer you to the Standard, Custom and Metallic Product Color Chart SC-1017.

## Mobile, Shelving, Doors & Drawers Colors | Weapons Rack Colors

### SMOOTH POWDER COAT PAINT FINISHES



Cottonwood  
CO (204)



Furniture White\*  
FW (15)



Whisper  
WP (216)



Tan\*  
TN (1)



Warm Brown  
WB (18)



Frost\*  
FR (6)



Light Tone  
LG (29)



Designer Grey  
DG (2)



Blue Grey  
BG (25)



Black  
BL (7)



Forest Green  
FG (84)

\*Mobile, Shelving, Doors & Drawers QuickShip color offerings.

\*Consult your Spacesaver Sales Representative for deviations to the colors and finishes on this chart.

### A COMMITMENT TO OUR CUSTOMERS

As our ISO 9001 certification would suggest, Spacesaver is dedicated to the highest standards of product quality. Equally important is our commitment to customer service, both before the sale and after.

Through our extensive network of local Area Contractors, Spacesaver provides a level of experience and competency that others simply do not. From architectural constraints and building codes to system design and floor-loading, we have the expertise to handle every issue and customer concern.

A storage solution that meets your unique criteria. Single-source turn-key project management. Certified system installation. Ongoing maintenance and support. Spacesaver sets a standard of professionalism, performance and responsiveness that is unmatched. We live up to our customer commitments and have the references to prove it.

You can rely on The Spacesaver Group.





## Mobile, Shelving, Doors &amp; Drawers | Lockers &amp; Gun Boxes Color Chart

## TEXTURED POWDER COAT PAINT FINISHES

Cottonwood  
CO (204)Furniture White  
FW (15)Whisper  
WP (216)Tan\*  
TN (1)Warm Brown  
WB (18)Frost\*  
FR (6)Light Tone  
LG (29)Designer Grey  
DG (2)Blue Grey  
BG (25)Black  
BL (7)

\*Consult your Spacesaver Sales Representative for deviations to the colors and finishes on this chart.

The swatch materials in this brochure are provided as a color guideline. There may be a variation in color, texture, finish and gloss between these samples and the actual product.

## A COMMITMENT TO THE ENVIRONMENT

Our system is environmentally safe without any volatile or fugitive (stray) emissions in the finished product. Additionally, during the manufacturing process, we produce no volatile emissions or hazardous waste.

## A COMMITMENT TO QUALITY POWDER COAT PAINT FINISHES

All components go through a multistage surface preparation prior to being coated; this process enhances topcoat bonding. The topcoat is a furniture-quality, epoxy-polyester hybrid Powder Coat Finish that meets or exceeds specifications set forth by the American Library Association.

Our electrostatically-applied, thermoset Powder Coat Paint System provides a durable hard finish with superior performance qualities.

- Excellent abrasion, impact, corrosion, stain, yellowing and chemical resistance.
- Exceptional adhesion with uniform film thickness and elimination of runs and sags associated with wet systems.
- A higher edge coating film thickness which virtually eliminates any sharp metal edges.
- Optional antimicrobial powder coat finish is available on all normally powder coated products. Antimicrobial powder coat contains a time-released germicide that is 99.9994% effective in controlling the growth of bacteria, mold, and mildew on the surface.



Spacesaver Corporation  
1450 Janesville Avenue  
Fort Atkinson, WI 53538-2798  
1-800-492-3434  
www.spacesaver.com



Contact information:  
Tom Kelly  
813 960-4830  
tkelly@pattersonpope.com  
www.pattersonpope.com



KI  
1330 Bellevue Street  
P.O. Box 8100  
Green Bay, WI 54302-8100  
1-800-424-2432  
www.ki.com

Spacesaver Corporation is a division of KI.

KI and Spacesaver are registered trademarks of Krueger International, Inc.

© 2014 KI and Spacesaver Corporation. All Rights Reserved. Litho in USA. SC-1114 SSC/MRK 10/14

### **Schedules**

The work to be performed under this proposal can commence upon receipt of your order and clarification of all details.

The project schedule will be coordinated and developed with you in future meetings.

Installation shall occur during normal work hours, 8:00a.m.  
To 5:00 p.m.,  
Monday through Friday.

Patterson Pope and its employees are bonded and insured. A certificate of insurance will be furnished upon request.

# STATEMENT OF WARRANTY

Spacesaver has an emphasis on customer satisfaction and continuous improvement. The statement of warranty is our continued commitment that Spacesaver is dedicated to serving our customers.

## LIFETIME LIMITED WARRANTY

Subject to the conditions stated below, Spacesaver Corporation ("Spacesaver") warrants to the original purchaser exclusively that the shelving and mobile carriages ("structural frames") manufactured by it will be free from defects in materials and workmanship for the lifetime of the structural frames. For the purposes of this warranty, structural frames shall be deemed to exclude all moving parts, controls and guides that have immediate contact with any moving parts.

## 10-YEAR LIMITED WARRANTY

Spacesaver also warrants that all carriage drive motors\*, shall be free from defects in materials and workmanship for ten (10) years from the date of the customer's written acceptance of installation. During the 10-year warranty period, all parts are included at no cost for 10 years. Labor is included at no cost during the first year of the 10-year warranty period. After the first year, all labor will be charged at the current rate.

## 5-YEAR LIMITED WARRANTY

Spacesaver also warrants that all equipment, other than structural frames and carriage drive motors\*, shall be free from defects in materials and workmanship for five (5) years from the date of the customer's written acceptance of installation. During the 5-year warranty period, all parts are included at no cost for 5 years. Labor is included at no cost during the first year of the 5-year warranty period. After the first year all labor will be charged at the current rate.

\*Eclipse™ Powered Systems and Wheelhouse™ High-Density Mobile Storage Systems only. Refer to Warranty for Mobile Rack Systems.

If any warranted equipment shall be proved to Spacesaver's satisfaction to be defective, such equipment shall be repaired or replaced at the option of Spacesaver. All warranty service for any equipment manufactured by Spacesaver must be performed by an authorized Spacesaver factory representative. This warranty shall be void if any portion of the purchase price shall be due but unpaid in accordance with the terms pursuant to which the equipment was sold. This warranty shall not apply to equipment repaired by any party other than an authorized Spacesaver factory representative or to defects or damage caused by (a) acts of God or other circumstances beyond Spacesaver's control, (b) improper installation (unless installation was by authorized factory installer), (c) improper electrical supply or environmental conditions, (d) improper operation, maintenance or storage, or (e) other than normal use or service. **EXCEPT FOR THE EXPRESS WARRANTIES SET FORTH ABOVE, SPACESAVER MAKES NO WARRANTIES, IMPLIED OR OTHERWISE, AND SPACESAVER SPECIFICALLY DISCLAIMS ANY IMPLIED WARRANTY OF MERCHANTABILITY OR FITNESS FOR A PARTICULAR PURPOSE.**

## LIMITATION OF LIABILITY

Repair or replacement of any defective equipment, or refund of the purchase price paid by the customer in the event Spacesaver determines such equipment cannot be repaired or replaced, shall be the customer's exclusive remedy for breach of the warranty for product defects, however caused, and in no case shall Spacesaver be liable for incidental, consequential, special or other damages, or loss of profits or revenues whether as a result of breach of contract or warranty, Spacesaver's negligence, or otherwise. Spacesaver shall have no liability for any advice or assistance rendered by any party outside the scope of Spacesaver's written specifications for the manufacture, operation or maintenance of the warranted equipment. Original installation must be performed by Spacesaver trained and certified installers.



# STATEMENT OF WARRANTY

## Weapon Racks, Firearm Storage, Evidence Lockers & Personal Duty Lockers

Spacesaver has an emphasis on customer satisfaction and continuous improvement. The statement of warranty is our continued commitment that Spacesaver is dedicated to serving our customers.

### LIFETIME LIMITED WARRANTY

Subject to the conditions stated below, Spacesaver Corporation ("Spacesaver") warrants to the original purchaser exclusively that the cabinets ("structural frames") manufactured by it will be free from defects in materials and workmanship for the lifetime of the structural frames. For the purposes of this warranty, structural frames shall be deemed to exclude all moving parts (doors, slides, hinges, and lock mechanism), removable accessories, vinyl coating, electronics and refrigeration equipment.

### 1-YEAR LIMITED WARRANTY

Spacesaver also warrants that all refrigeration units, shall be free from defects in materials and workmanship for one (1) year from the date of the customer's written acceptance of installation. During the 1-year warranty period, all parts are included at no cost for 1 years. Labor is included at no cost during the first year of the 1-year warranty period. After the first year of the 1-year warranty, all labor will be charged at the current rate.

### 5-YEAR LIMITED WARRANTY

Spacesaver also warrants that all equipment, other than structural frames and refrigeration units, shall be free from defects in materials and workmanship for five (5) years from the date of the customer's written acceptance of installation. During the 5-year warranty period, all parts are included at no cost for 5 years. Labor is included at no cost during the first year of the 5-year warranty period. After the first year of the 5-year warranty, all labor will be charged at the current rate.

Spacesaver also warrants that all electronics associated with a ControLoc™ Technology installation, shall be free from defects in materials and workmanship for five (5) years from the date of the customer's written acceptance of installation or 30 days after shipment. Limited warranty specific to ControLoc electronics is conditioned upon the end user "activating" their warranty at [www.spacesaver.com](http://www.spacesaver.com). During the 5-year warranty period, all parts are included at no cost for 5 years. Labor is included at no cost during the first year of the 5-year warranty period. After the first year of the 5-year warranty, all labor will be charged at the current rate.

If any warranted equipment shall be proved to Spacesaver's satisfaction to be defective, such equipment shall be repaired or replaced at the option of Spacesaver. All warranty service for any equipment manufactured by Spacesaver must be performed by an authorized Spacesaver factory representative. This warranty shall be void if any portion of the purchase price shall be due but unpaid in accordance with the terms pursuant to which the equipment was sold. This warranty shall not apply to equipment repaired by any party other than an authorized Spacesaver factory representative or to defects or damage caused by (a) acts of God or other circumstances beyond Spacesaver's control, (b) improper installation (unless installation was by authorized factory installer), (c) improper environmental conditions, (d) improper operation, maintenance or storage, or (e) other than normal use or service. **EXCEPT FOR THE EXPRESS WARRANTIES SET FORTH ABOVE, SPACESAVER MAKES NO WARRANTIES, IMPLIED OR OTHERWISE, AND SPACESAVER SPECIFICALLY DISCLAIMS ANY IMPLIED WARRANTY OF MERCHANTABILITY OR FITNESS FOR A PARTICULAR PURPOSE.**

### LIMITATION OF LIABILITY

Repair or replacement of any defective equipment, or refund of the purchase price paid by the customer in the event Spacesaver determines such equipment cannot be repaired or replaced, shall be the customer's exclusive remedy for breach of the warranty for product defects, however caused, and in no case shall Spacesaver be liable for incidental, consequential, special or other damages, or loss of profits or revenues whether as a result of breach of contract or warranty, Spacesaver's negligence, or otherwise. Spacesaver shall have no liability for any advice or assistance rendered by any party outside the scope of Spacesaver's written specifications for the manufacture, operation or maintenance of the warranted equipment.



**Investment**

The investment for the systems and services described in this proposal, tailored to the needs of the City of Venice Police Department and offered under Sourcewell contract is **\$238,856.00**

The investment includes the following field services:  
Installation will be performed by factory authorized employees.  
Installation will include off site receiving and /or meeting trucks, check-in, inside delivery, transporting material and staging material in the installation sites, unpacking, disposing of trash, installation of the systems, planning and engineering, testing equipment, clean-up of the areas after installations, staff training.

Patterson Pope is committed to providing the promised values listed herein.

**Accepted by:** \_\_\_\_\_  
City of Venice Date

## **ORDER/PAYMENT INFORMATION**

TO ORDER: PLEASE PROVIDE YOUR PURCHASE ORDER, SIGN YOUR ACCEPTANCE ON THE DRAWINGS AND RETURN BY FAX OR EMAIL.

### **ORDER ADDRESS**

PATTERSON POPE, INC.  
14502 N. DALE MABRY HWY. SUITE 200  
TAMPA, FL. 33618  
ATTENTION: TOM KELLY

PHONE: (813) 960-4830  
FAX: (813) 960-4836  
EMAIL: tkelly@pattersonpope.com

### **PAYMENT ADDRESS**

PATTERSON POPE, INC.  
10321 S. MEDALLION DRIVE  
CINCINNATI, OHIO 45241

### **TERMS**

DEPOSIT WITH THE ORDER AND PROGRESS PAYMENTS

Sourcewell Contract No. 31715- KII

KI /Spacesaver Storage Systems / Patterson Pope

Effective dates: 6/1/2015 – 4/9/2020

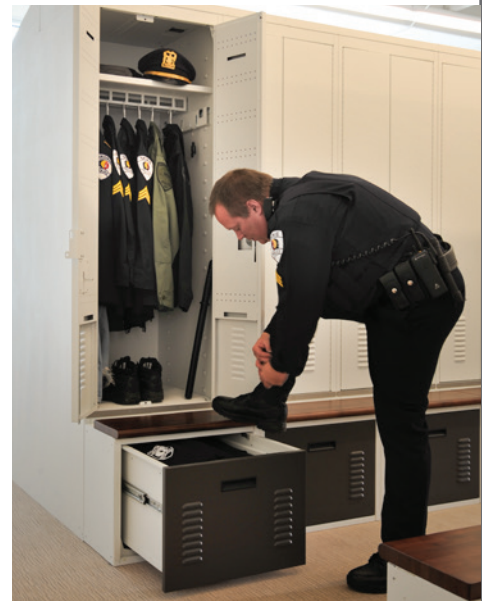
Our Federal ID # is 56-0986683



# Your partner in storage.

Spacesaver® Corporation is proud to partner with Sourcewell formerly known as The National Joint Powers Alliance® (NJPA). Sourcewell is one of the nation's largest municipal contracting agencies, to offer their members a competitively bid contract. Spacesaver is the innovator in storage solutions from short-term to long-term evidence storage, to weapons storage and personal gear lockers for secure storage for government and public safety.

Join Sourcewell at no cost and access Spacesaver's competitively priced storage solutions to start saving time, money and resources today! To learn more about Spacesaver or to find a local dealer, visit [www.spacesaver.com](http://www.spacesaver.com).



**Spacesaver®**

Spacesaver Corporation  
1450 Janesville Avenue  
Fort Atkinson, WI 53538-2798  
**800.492.3434**



**patterson•pope** Contract Number

SPACE MADE **SIMPLE.**

Contact information:  
Tom Kelly  
813 960-4830  
[tkelly@pattersonpope.com](mailto:tkelly@pattersonpope.com)  
[www.pattersonpope.com](http://www.pattersonpope.com)

**031715-KII**



S t o r a g e   S o l v e d®

[www.spacesaver.com](http://www.spacesaver.com)





**Why Patterson Pope**

50 years providing storage solutions for clients in Florida

We have provided High density storage solutions for over 38 years.

Local installation, project management and service

Tom Kelly, project manager and planner 28 years' experience.

Factory trained installers

Local service

Public Safety expertise

Patterson Pope is considered a small business

**A partial list of clients**

St. Petersburg Police Department

Pinellas County Sheriff, Clerk, Finance, Public Defender, Public Works, Real Estate, State Attorney's Office Clearwater

Pasco County Sheriff, Utilities

Orlando Police Department

Seminole & Orange County Sheriff Clerk of the Court

Sarasota Police Department and Sarasota Sheriff and Schools

Manatee County Sheriff

Citrus County sheriff and Clerk of the Court

Hillsborough County Clerk of the Court, EPA, Public Works, Sheriff

Lee County Sheriff and Clerk of the Court  
Tampa Bay Buccaneers