

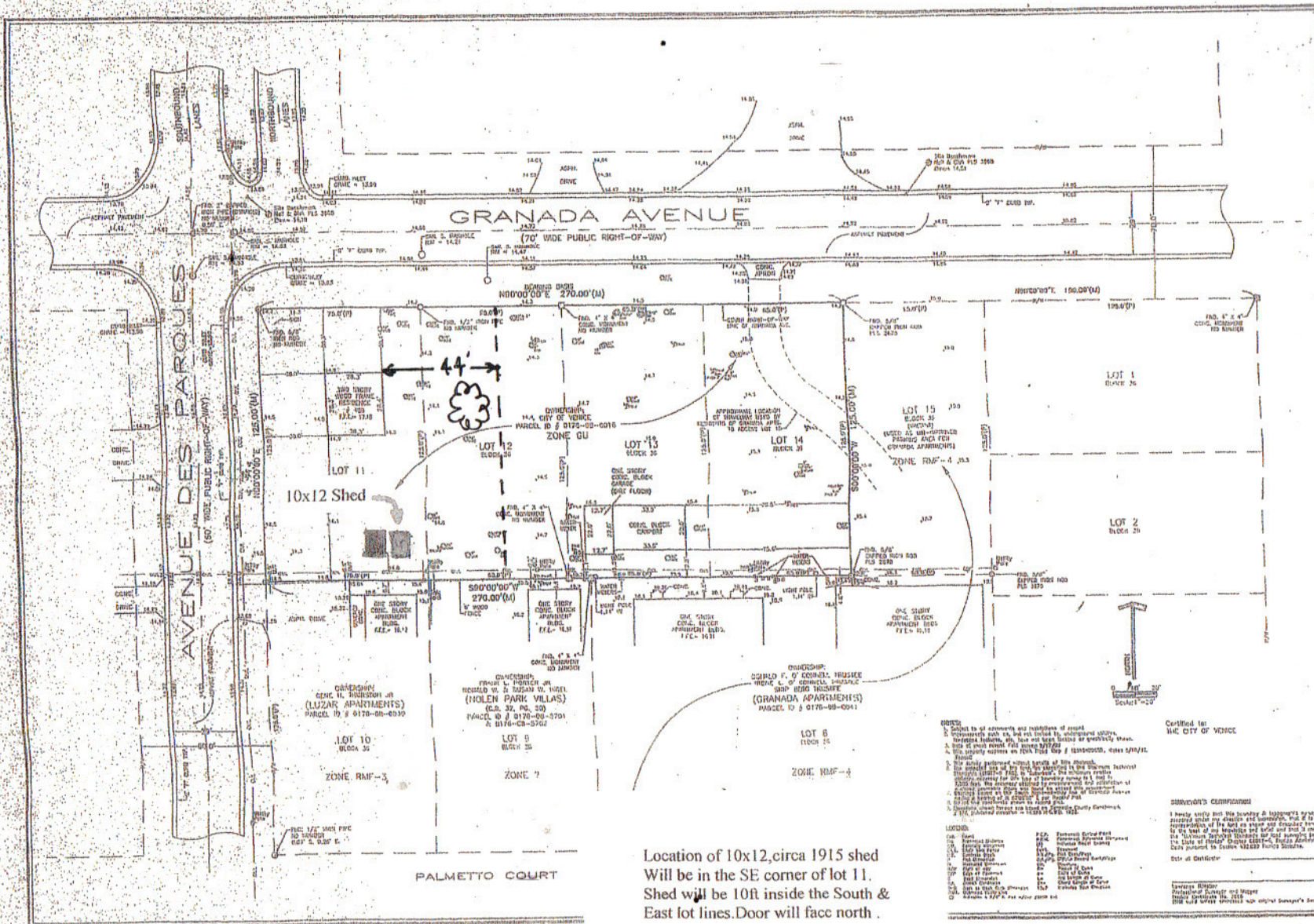
J & J Bauer

From: J & J Bauer <jbauerx2@gmail.com>
Sent: Saturday, June 07, 2014 4:40 PM
To: Bdaniels@venicegov.com
Subject: L-HH rear lot line change
Attachments: 2014-06-07 162536.pdf

Bob,

I spent the day at the L-HH rechecking the footage for the requested additional rear yard and have settled on a lesser amount, which will give the city an additional row of parking. I show this change on the accompanying attachment. Thank you for your timely assistance. The new rear lot line request includes saving a 200 year old, first growth, Florida slash pine. This is the same wood that was used in the construction of the house in 1896.

Jack Bauer, L-HH volunteer coordinator



Location of 10x12, circa 1915 shed
Will be in the SE corner of lot 11.
Shed will be 10ft inside the South &
East lot lines. Door will face north.

Scale of this reduction is 4.5/16ths
Equal 20 ft.

*** NEW LOCATION - PER SIEBERT ARCHITECT**
*** NEW LOT LINE OF REAR YARD - LHM 6/7/14**

WEBER ENGINEERING & SURVEYING, INC.
2000 Bayview Blvd., Suite 100
Tampa, FL 33606
Phone: (813) 988-1111
Fax: (813) 988-1112
www.weber-engineering.com

BOUNDARY & TOPOGRAPHIC SURVEY
LOTS 11, 12, 13 & 14, BLOCK 36
GULFWAY SECTION OF VENICE
Section 17, Township 28 S, Range 18 E, East
City of Venice, Sarasota County, Florida

- NOTES:**
1. Subject to all easements and restrictions of record.
 2. Easements shown on this map are not to be construed as a grant or reservation of easements.
 3. Easements shown on this map are not to be construed as a grant or reservation of easements.
 4. Easements shown on this map are not to be construed as a grant or reservation of easements.
 5. Easements shown on this map are not to be construed as a grant or reservation of easements.
 6. Easements shown on this map are not to be construed as a grant or reservation of easements.
 7. Easements shown on this map are not to be construed as a grant or reservation of easements.
 8. Easements shown on this map are not to be construed as a grant or reservation of easements.
 9. Easements shown on this map are not to be construed as a grant or reservation of easements.
 10. Easements shown on this map are not to be construed as a grant or reservation of easements.

City of Venice

Surveyor's Commission

I hereby certify that this survey is a true and correct representation of the land as surveyed and shown on this map.

Surveyor's Signature
Professional Engineer and Surveyor
Florida License No. 1010
Date of Survey: 6/7/14

1
1