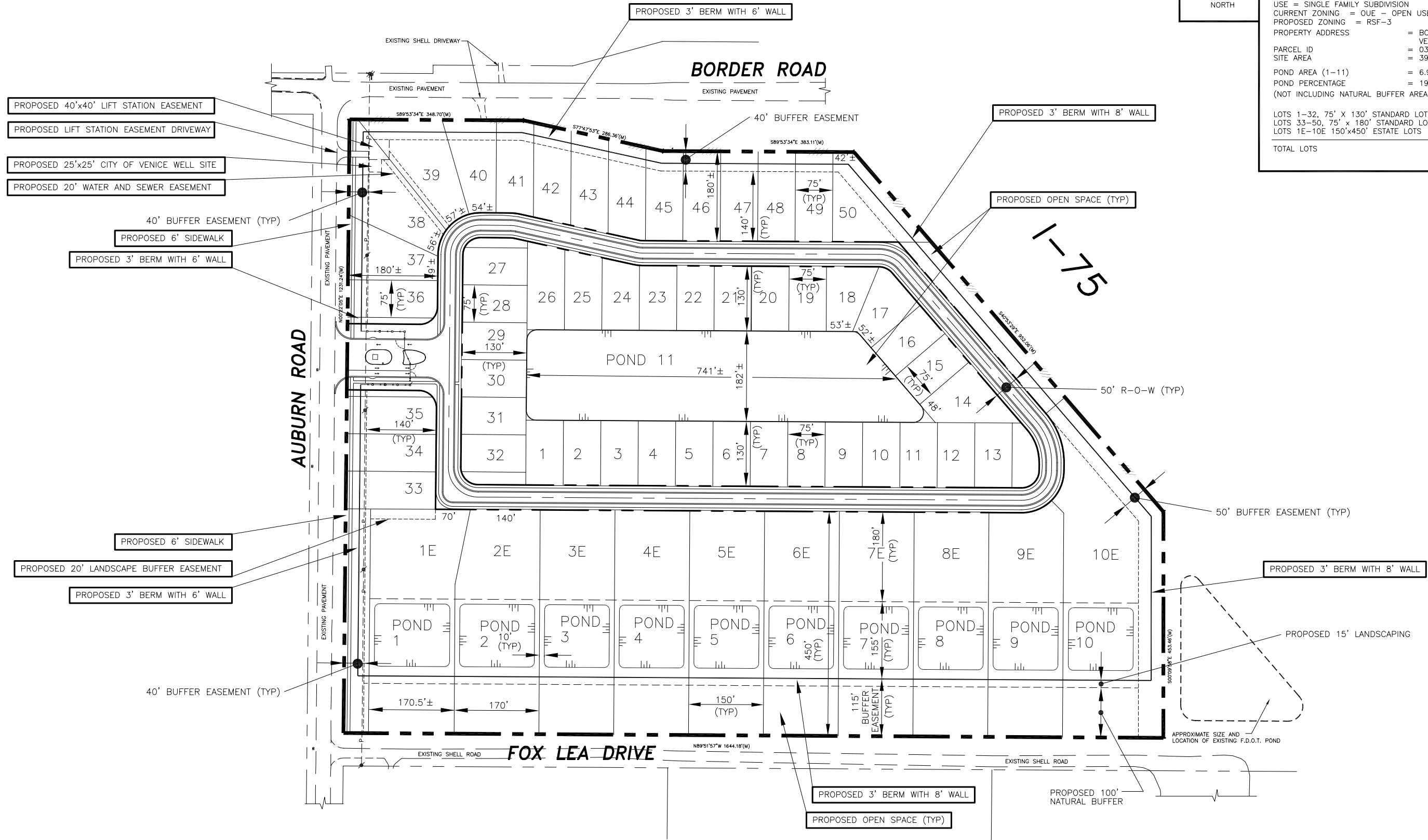


Exhibit "B"



SITE DATA

USE = SINGLE FAMILY SUBDIVISION
 CURRENT ZONING = OUE - OPEN USE ESTATES
 PROPOSED ZONING = RSF-3
 PROPERTY ADDRESS = BORDER ROAD
 VENICE, FLORIDA 34292
 PARCEL ID = 0399040001
 SITE AREA = 39.62 AC.±
 POND AREA (1-11) = 6.92 AC.±
 POND PERCENTAGE = 19.22 %
 (NOT INCLUDING NATURAL BUFFER AREA)
 LOTS 1-32, 75' X 130' STANDARD LOTS = 32 EA.
 LOTS 33-50, 75' X 180' STANDARD LOTS = 18 EA.
 LOTS 1E-10E 150' X 450' ESTATE LOTS = 10 EA.
 TOTAL LOTS = 60



CLIENT: MPS DEVELOPMENT AND CONSTRUCTION, LLC 625 N. TAMiami TRAIL VENICE, FL 34285	PROJECT NAME:	SEC. . . TWP. . . RNG. . .	PROJECT NUMBER 22-2568	NO. DATE BY REVISIONS	©2002 by Professional Engineering Resources, Inc. All Rights Reserved The arrangements depicted herein are the sole property of Professional Engineering Resources, Inc. and may not be reproduced in any form without its written permission.	PROFESSIONAL ENGINEERING RESOURCES, INC. 846 94th AVE. NORTH ST. PETERSBURG, FL 33702 CIVIL ENGINEERS, PLANNERS, PERMIT EXPEDITORS (727) 576-2007 CERTIFICATE OF AUTHORIZATION NUMBER: 4401	DRAWING TYPE	DESIGNED BY PVS DRAWN BY SAG CHECKED BY PVS DATE 2-26-24	SHEET NUMBER 1
	CASSATA OAKS CONCEPTUAL SITE PLAN		SCALE 1"=200'	1 3-25-24 SAG REVISED AS PER CITY OF VENICE COMMENTS.			<input checked="" type="checkbox"/> PRELIMINARY <input type="checkbox"/> CONSTRUCTION <input type="checkbox"/> RECORD	APPROVED PAUL V. SHERMA, REG. NO. 35628	