

NORTH ELEVATION

3/32"=1'-0" @ 11X17
 3/16"=1'-0" @ 22X34

REQUIRED HEIGHT CALCULATIONS

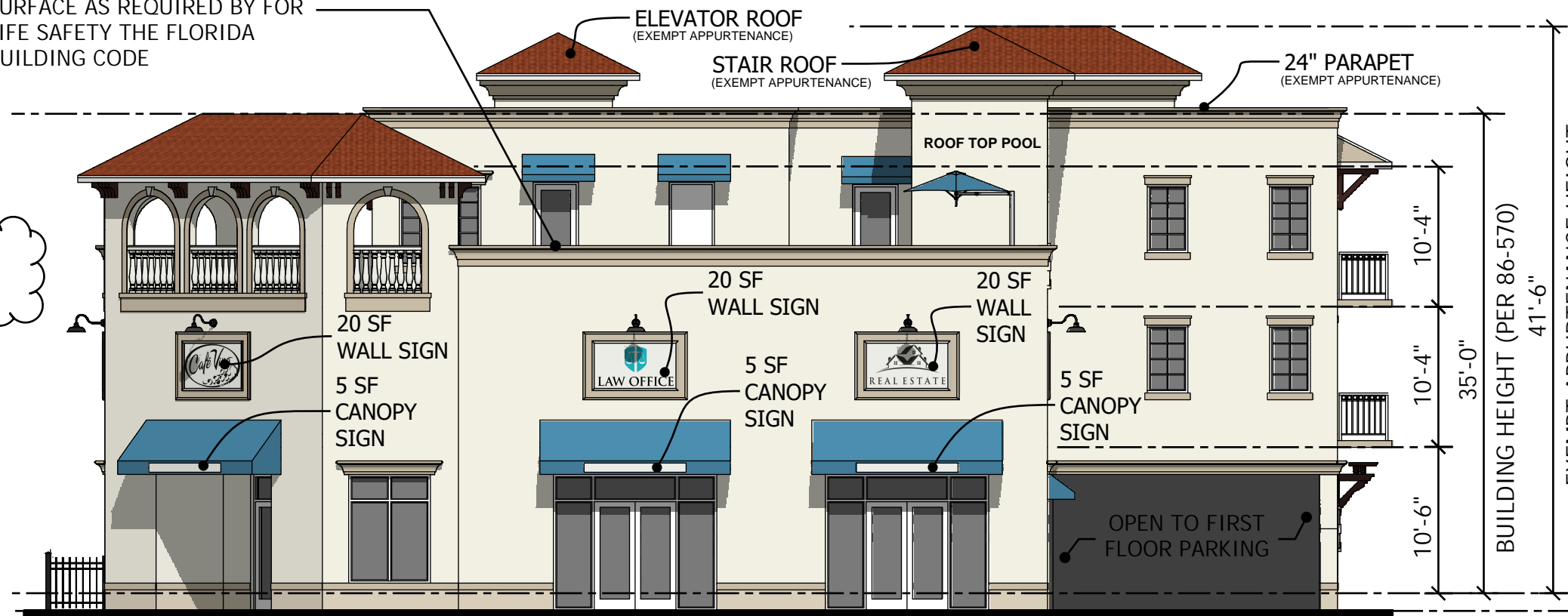
METHOD 1-
DEP REQUIRED ELEVATION

METHOD 2-
FEMA REQUIRED ELEVATION

METHOD 3-
AVERAGE CROWN OF ROAD HEIGHT= 12.30
 CROWN OF ROAD PLUS 1.5 FEET= 13.80

METHOD 4-
AVERAGE EXISTING GRADE

PARAPET WALL TO BE 42" MIN
 ABOVE ROOFTOP WALKING
 SURFACE AS REQUIRED BY FOR
 LIFE SAFETY THE FLORIDA
 BUILDING CODE



WEST ELEVATION

3/32"=1'-0" @ 11X17
 3/16"=1'-0" @ 22X34

CASSATA SQUARE

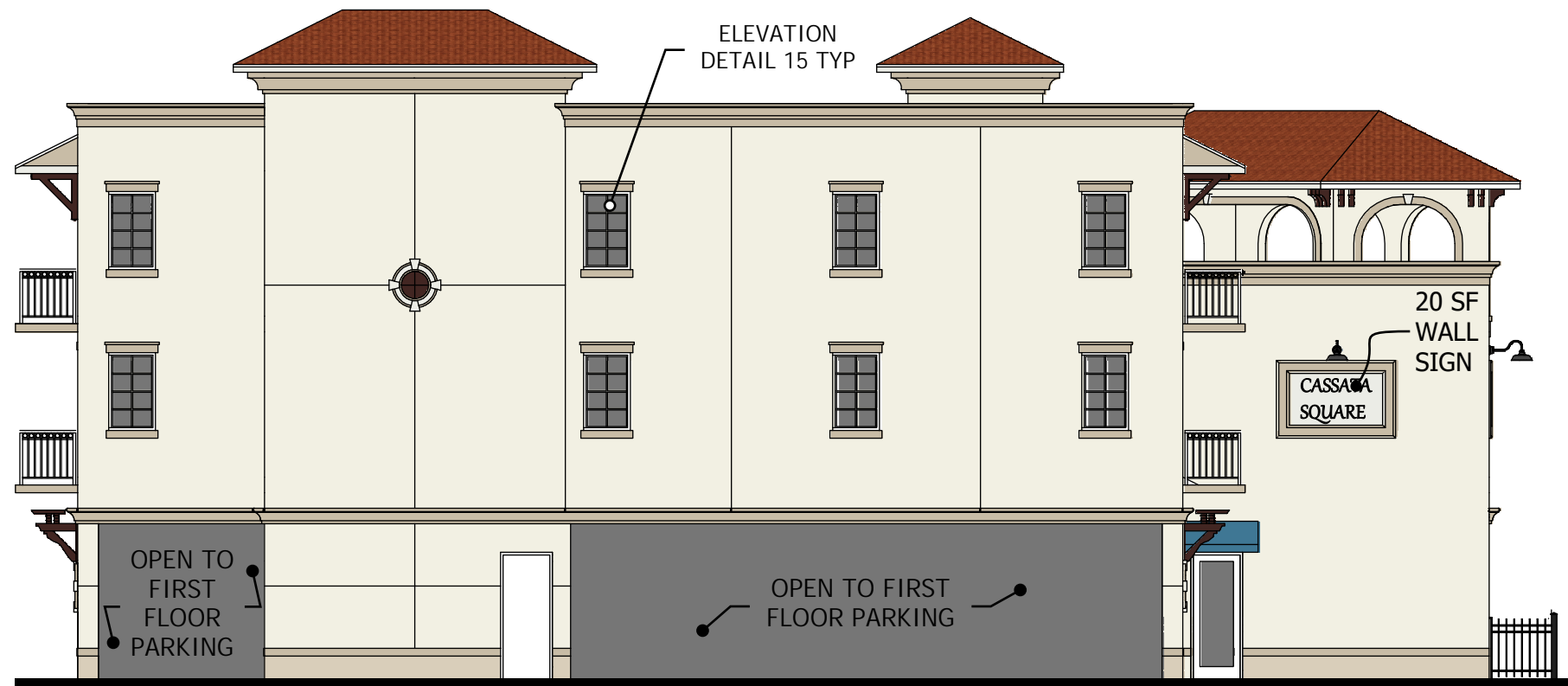
A NEW MIXED USE PROJECT
 DESIGNED FOR:
 CS OF VENICE DEVELOPMENT CO.
 625 TAMIAMI TRAIL N.
 VENICE, FL 34285
 11/7/2022

13.80'
CROWN
OF ROAD + 1.5'
 12.29'
F.F.E.



SOUTH ELEVATION

3/32"=1'-0" @ 11X17
 3/16"=1'-0" @ 22X34



EAST ELEVATION

3/32"=1'-0" @ 11X17
 3/16"=1'-0" @ 22X34

CASSATA SQUARE

A NEW MIXED USE PROJECT
 DESIGNED FOR:
 CS OF VENICE DEVELOPMENT CO.
 625 TAMiami TRAIL N.
 VENICE, FL 34285
 11/7/2022

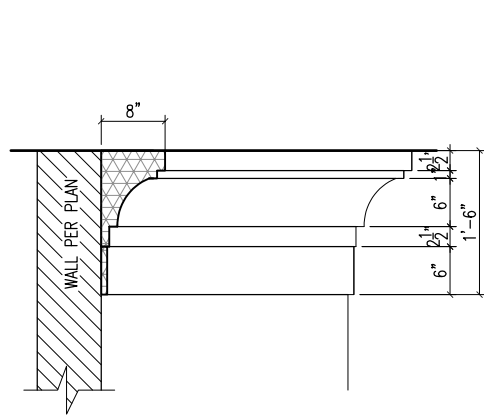




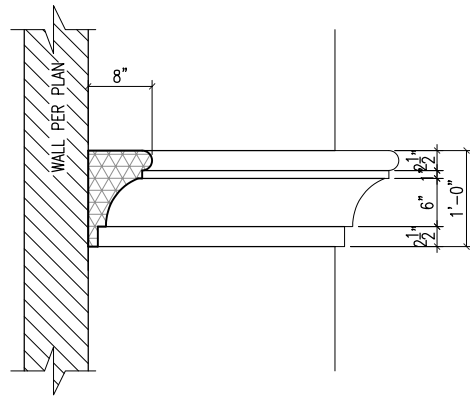
CASSATA SQUARE

A NEW MIXED USE PROJECT
 DESIGNED FOR:
 CS OF VENICE DEVELOPMENT CO.
 625 TAMIAMI TRAIL N.
 VENICE, FL 34285
 11/7/2022

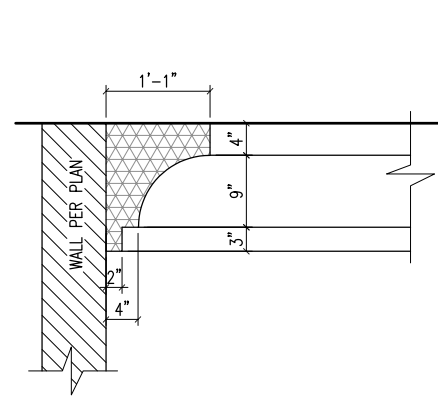




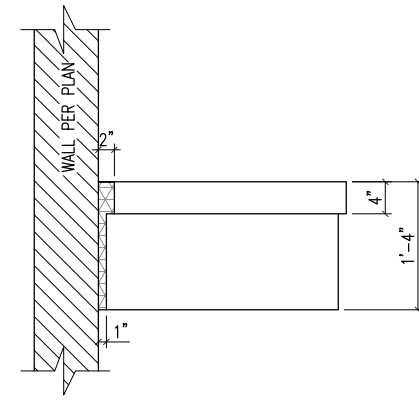
1 PARAPET MOLDING DETAIL
SCALE: 1" = 1'-0"



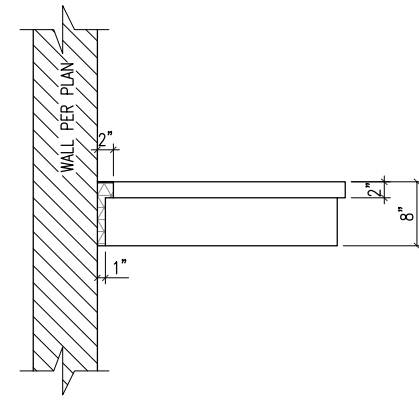
2 TRIM DETAIL
SCALE: 1" = 1'-0"



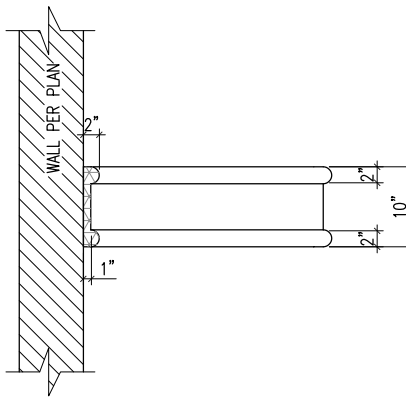
3 EAVE MOLDING DETAIL
SCALE: 1" = 1'-0"



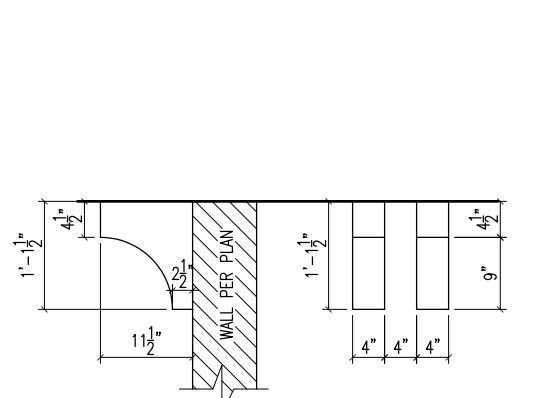
4 TRIM DETAIL
SCALE: 1" = 1'-0"



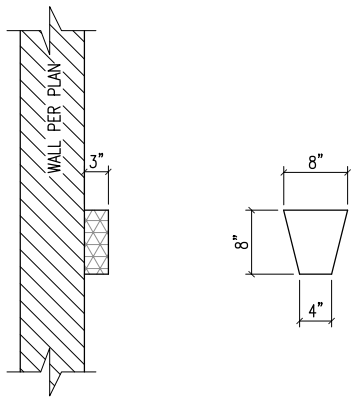
5 TRIM DETAIL
SCALE: 1" = 1'-0"



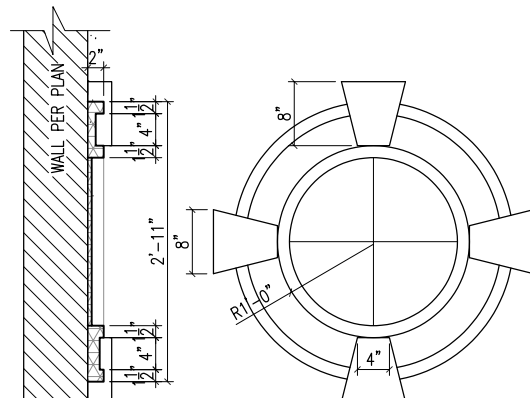
6 WALL SIGN TRIM DETAIL
SCALE: 1" = 1'-0"



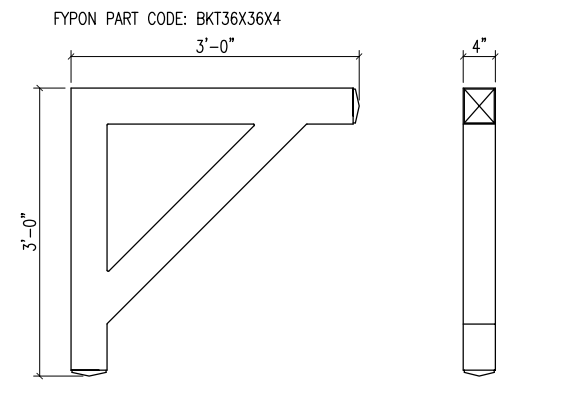
7 BRACKET DETAIL
SCALE: 1" = 1'-0"



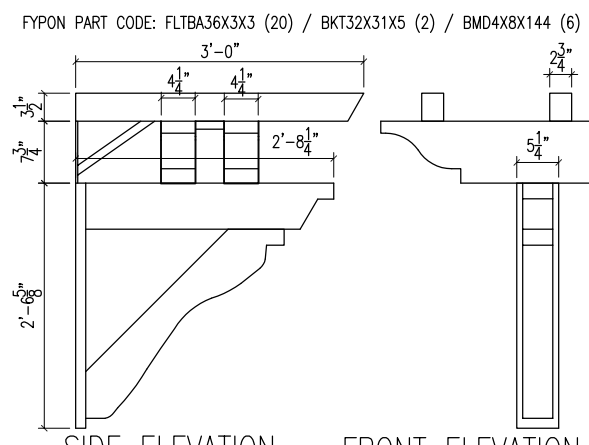
8 KEYSTONE DETAIL
SCALE: 1" = 1'-0"



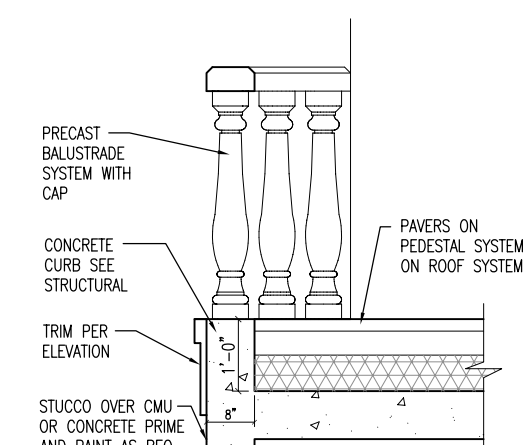
9 MEDALLION DETAIL
SCALE: 1" = 1'-0"



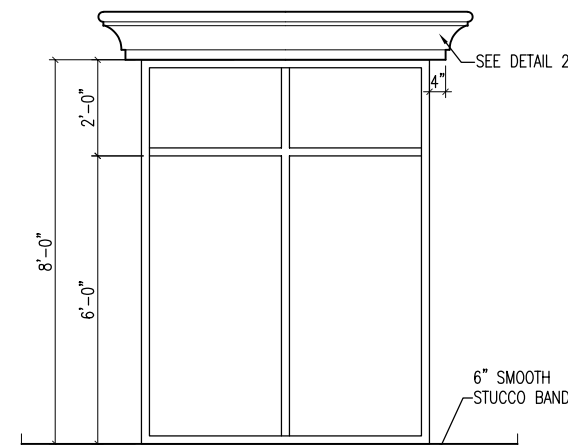
10 SMOOTH BRACKET DETAIL
SCALE: 1" = 1'-0"



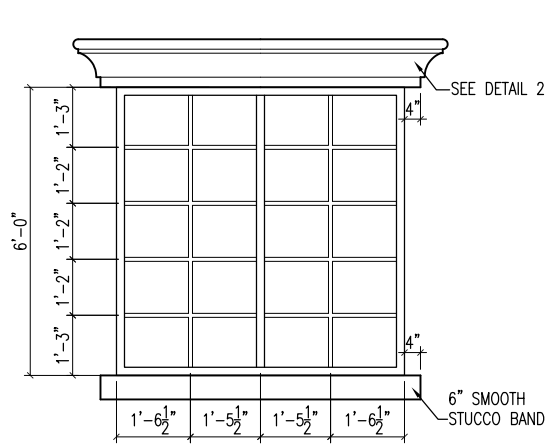
11 TRELLIS DETAIL
SCALE: 1" = 1'-0"



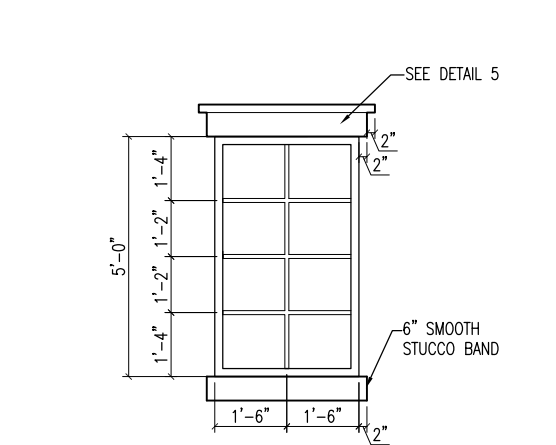
12 BALUSTRADE CURB DETAIL
SCALE: 3/4" = 1'-0"



13 WINDOW DETAIL
SCALE: 1/2" = 1'-0"



14 WINDOW DETAIL
SCALE: 1/2" = 1'-0"



15 WINDOW DETAIL
SCALE: 1/2" = 1'-0"

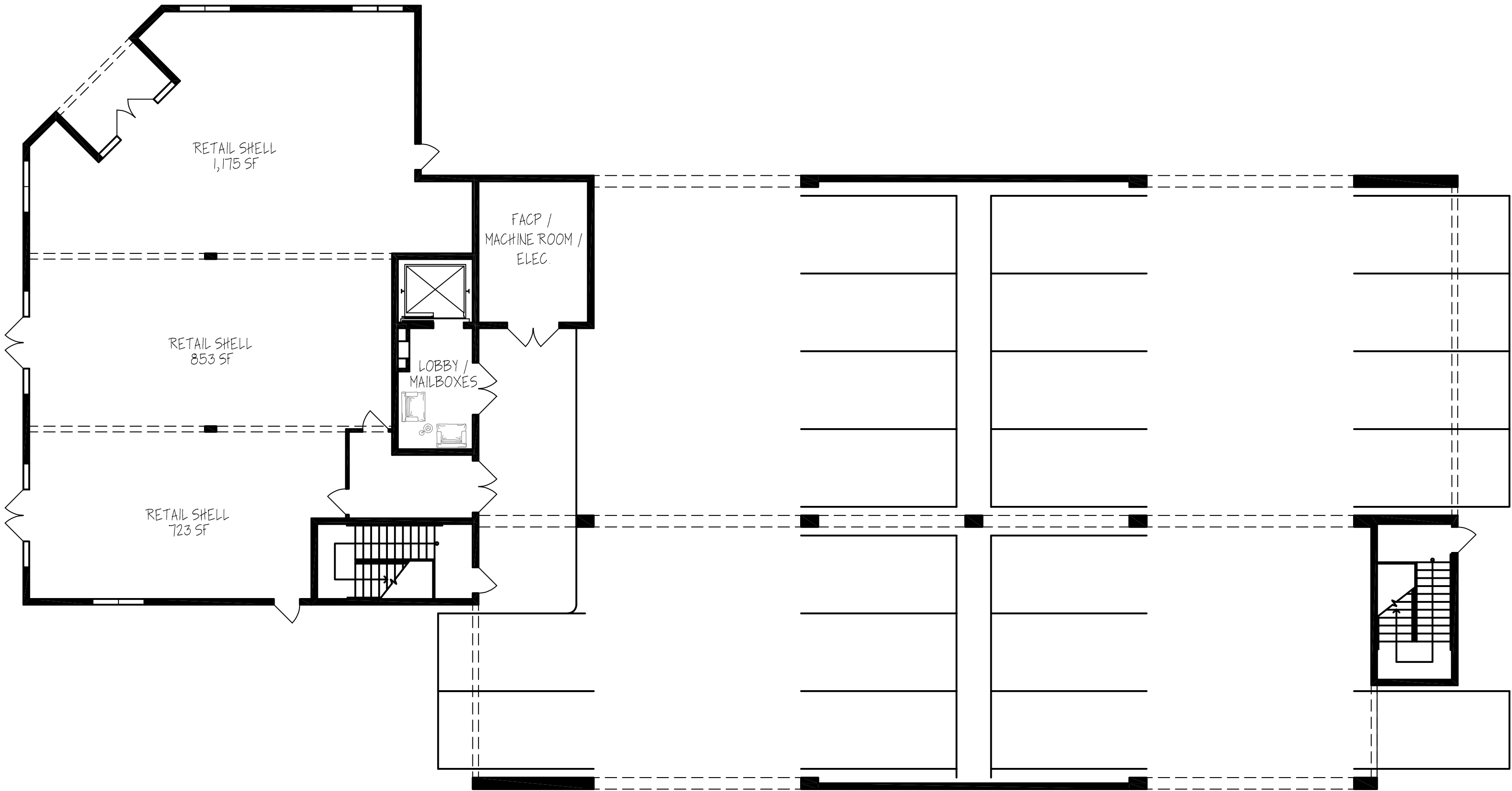
CASSATA SQUARE

A NEW MIXED USE PROJECT
DESIGNED FOR:
CS OF VENICE DEVELOPMENT CO.
625 TAMIAMI TRAIL N.
VENICE, FL 34285
11/7/2022

ELEVATION DETAILS

1/2 SCALE @ 11X17
FULL SCALE @ 22X34





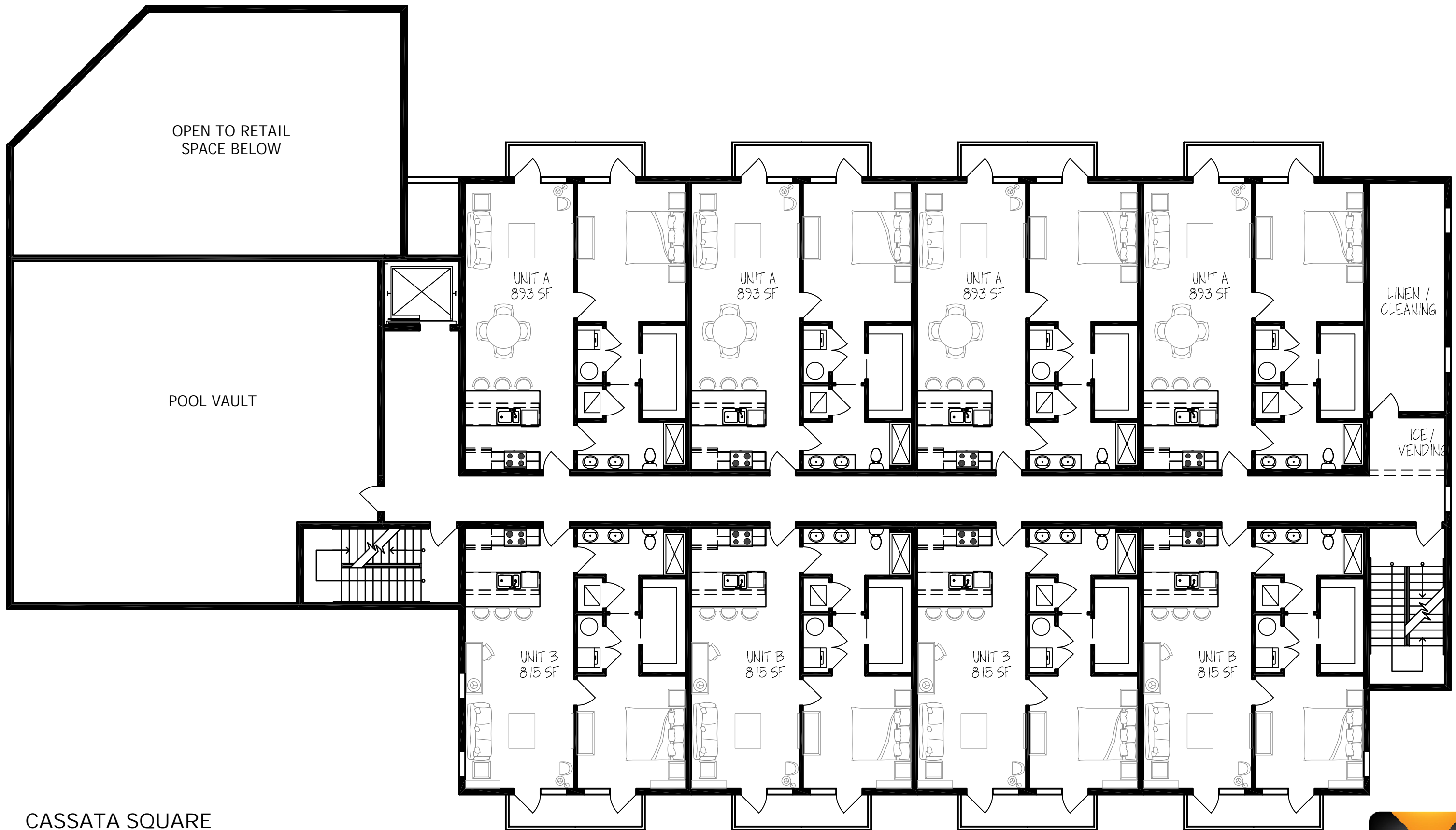
CASSATA SQUARE

A NEW MIXED USE PROJECT
 DESIGNED FOR:
 CS OF VENICE DEVELOPMENT CO.
 625 TAMiami TRAIL N.
 VENICE, FL 34285
 11/7/2022

FIRST FLOOR PLAN

3/32"=1'-0"@ 11X17
 3/16"=1'-0"@ 22X34





CASSATA SQUARE

A NEW MIXED USE PROJECT
 DESIGNED FOR:
 CS OF VENICE DEVELOPMENT CO.
 625 TAMIAMI TRAIL N.
 VENICE, FL 34285
 11/7/2022

SECOND FLOOR PLAN

3/32" = 1'-0" @ 11X17
 3/16" = 1'-0" @ 22X34





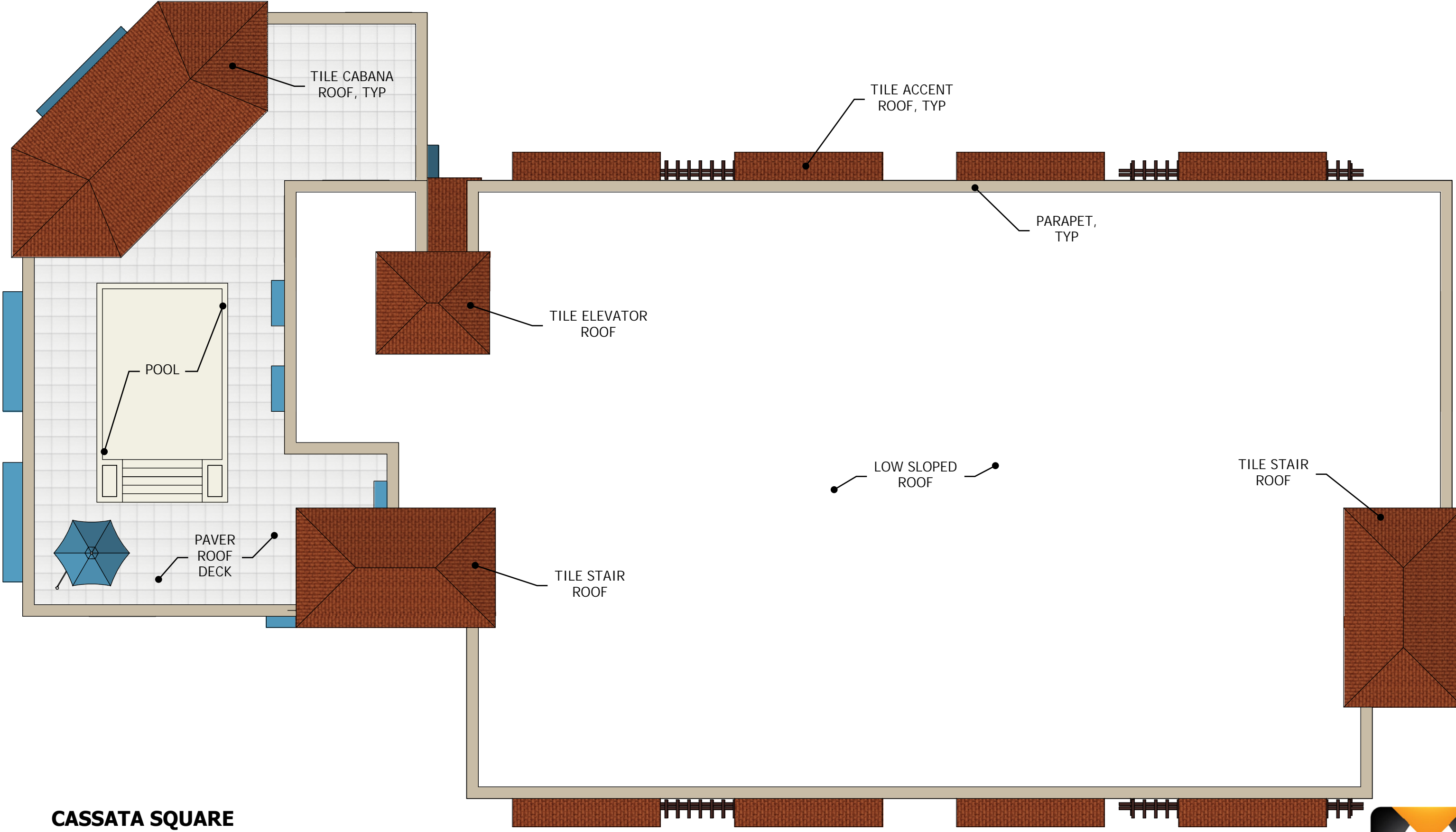
CASSATA SQUARE

A NEW MIXED USE PROJECT
 DESIGNED FOR:
 CS OF VENICE DEVELOPMENT CO.
 625 TAMIAMI TRAIL N.
 VENICE, FL 34285
 11/7/2022

THIRD FLOOR PLAN

3/32"=1'-0"@ 11X17
 3/16"=1'-0"@ 22X34





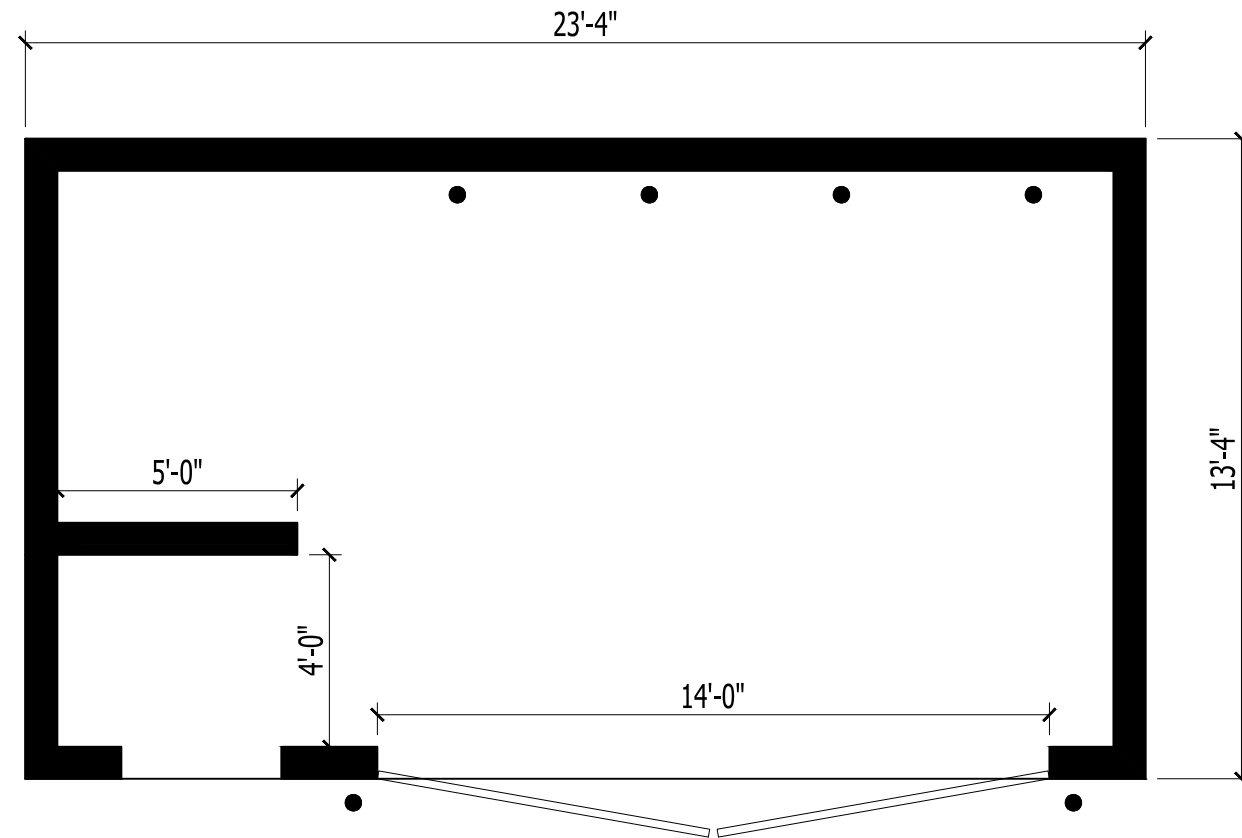
CASSATA SQUARE

A NEW MIXED USE PROJECT
 DESIGNED FOR:
 CS OF VENICE DEVELOPMENT CO.
 625 TAMIAMI TRAIL N.
 VENICE, FL 34285
 11/7/2022

ROOF PLAN

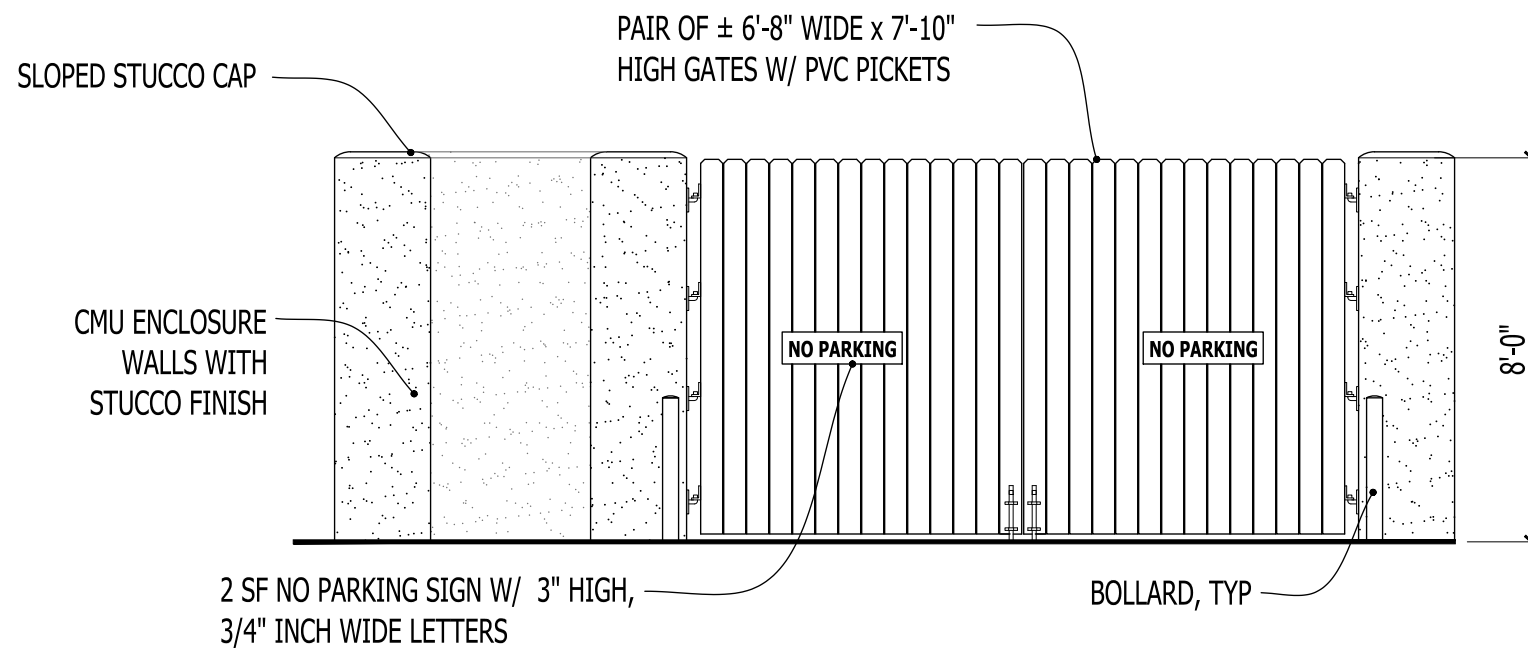
3/32"=1'-0"@ 11X17
 3/16"=1'-0"@ 22X34





DUMPSTER ENCLOSURE PLAN

1/4" = 1'-0" @ 11X17
 1/2" = 1'-0" @ 22X34



DUMPSTER ENCLOSURE ELEVATION

1/4" = 1'-0" @ 11X17
 1/2" = 1'-0" @ 22X34

CASSATA SQUARE

A NEW MIXED USE PROJECT
 DESIGNED FOR:
 CS OF VENICE DEVELOPMENT CO.
 625 TAMiami TRAIL N.
 VENICE, FL 34285
 11/7/2022

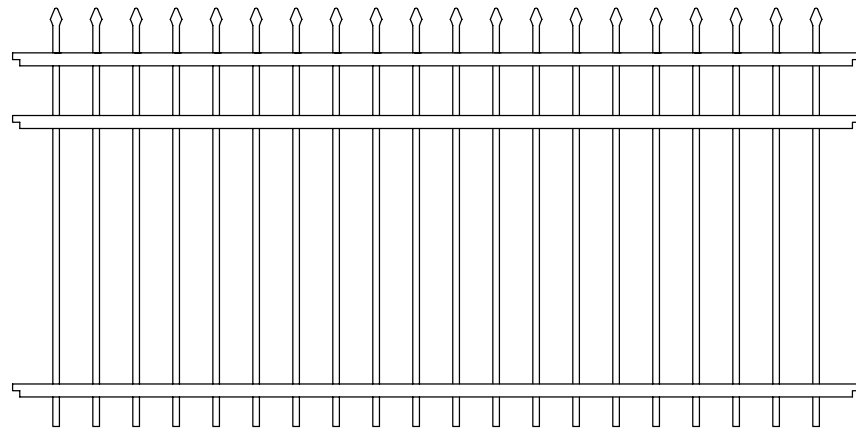


SITE FENCING AND GATES

Style = Marble

Height = 42"

Color = Black

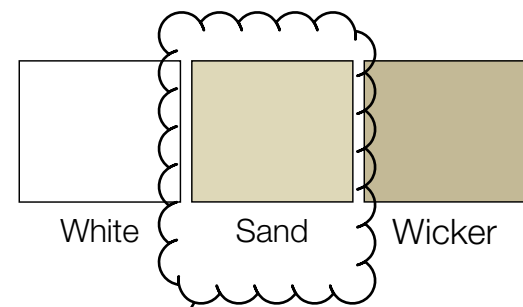
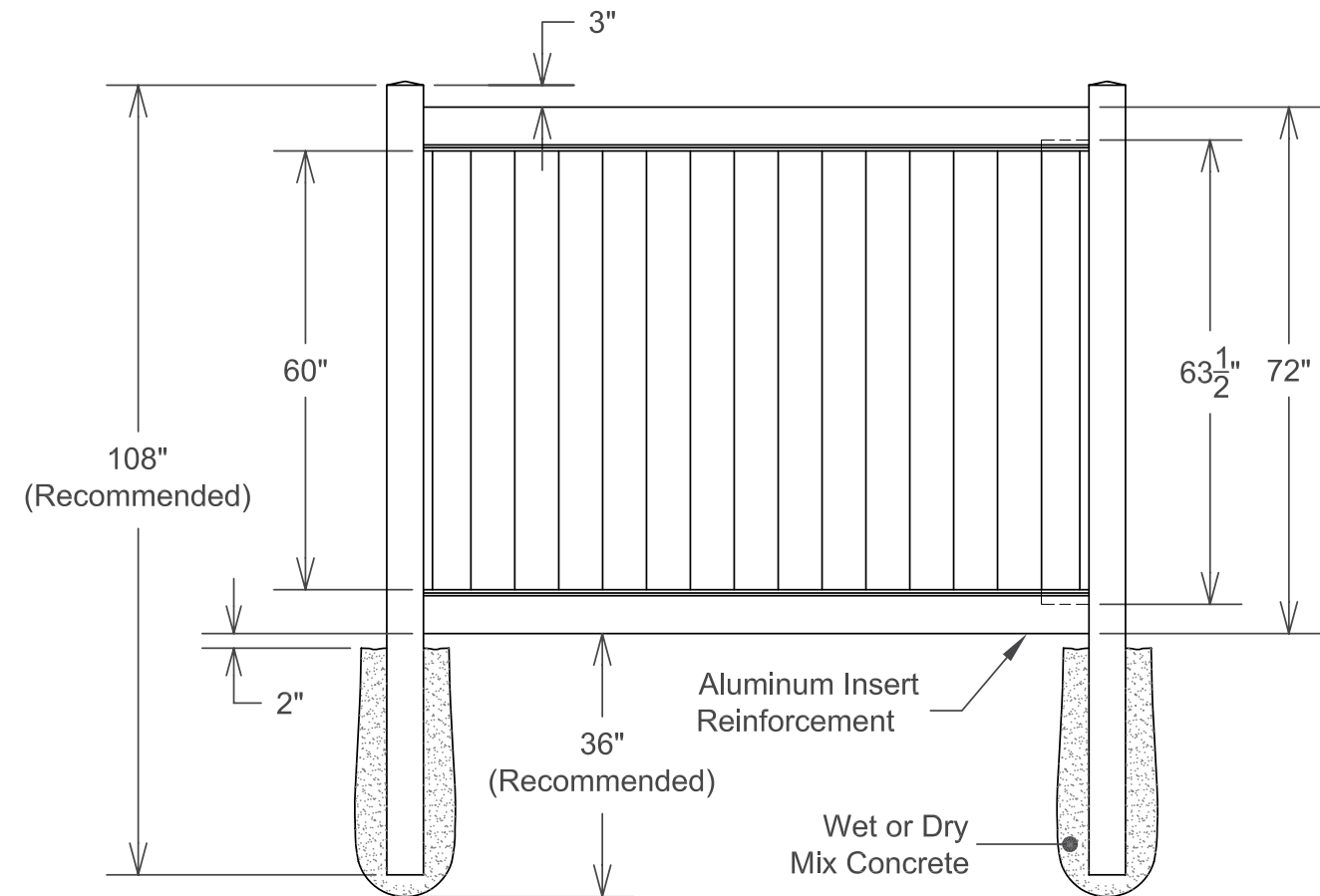


PRIVACY FENCING

Style = Dogwood

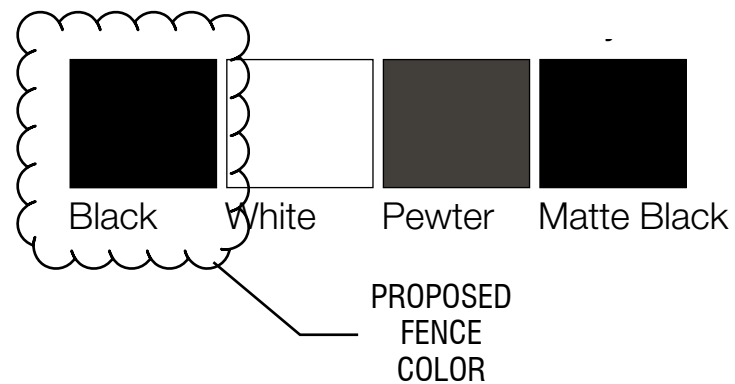
Height = 6'-0"

Color = Sand

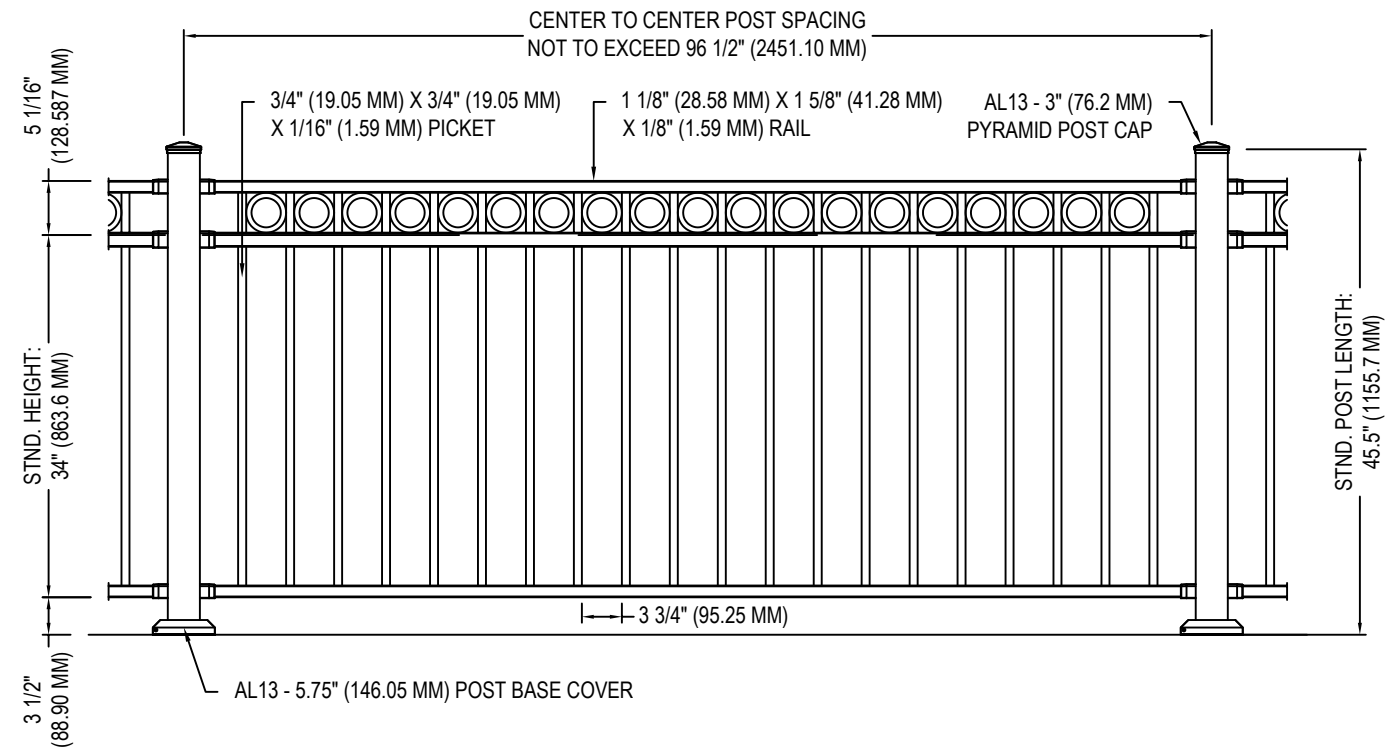


CASSATA SQUARE

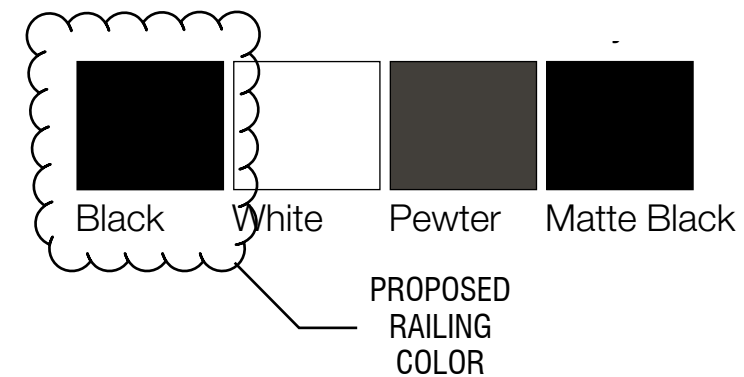
A NEW MIXED USE PROJECT
 DESIGNED FOR:
 CS OF VENICE DEVELOPMENT CO.
 625 TAMIAMI TRAIL N.
 VENICE, FL 34285
 11/7/2022



Residential Unit Balcony Railing
Style = 3-Rail with Ring Top Accent Top Panel
Height = 42" MIN
Color = White



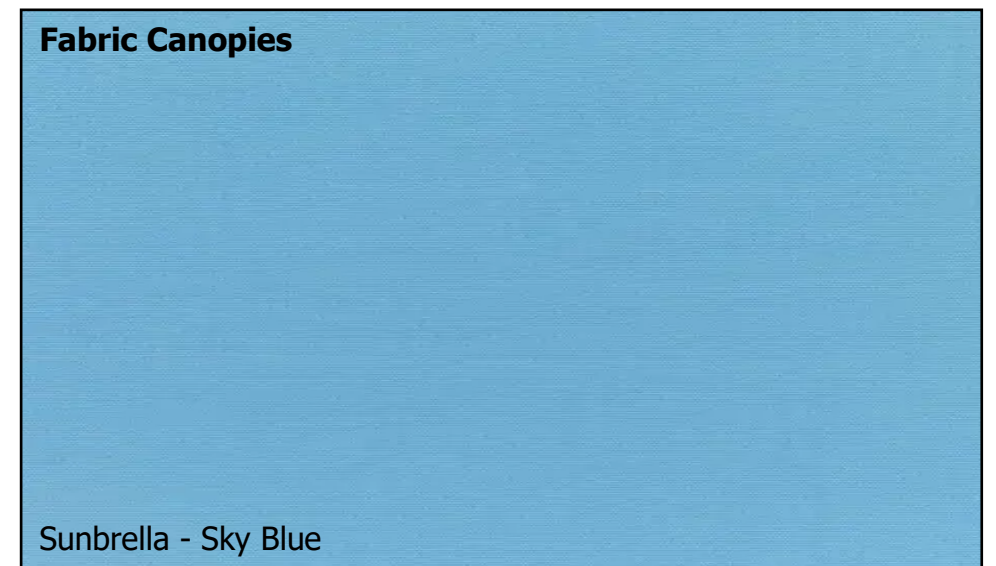
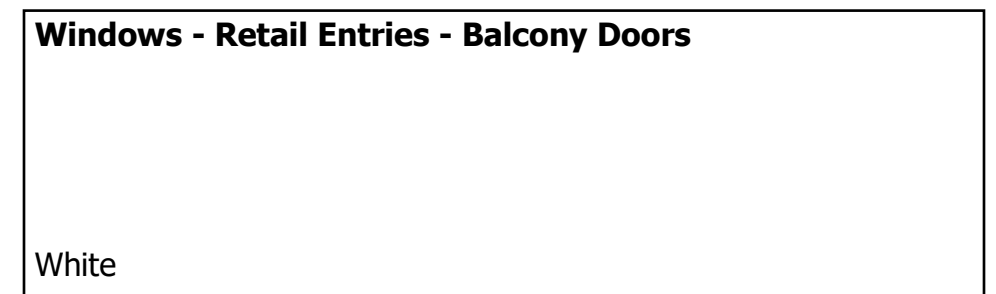
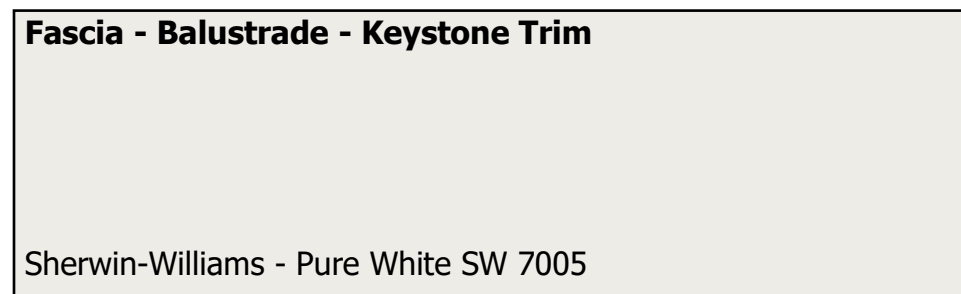
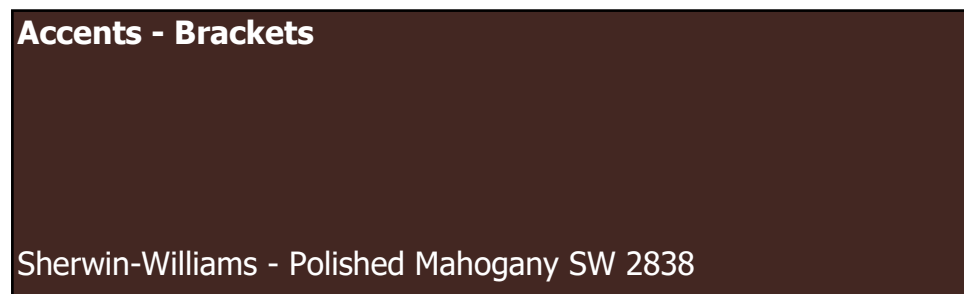
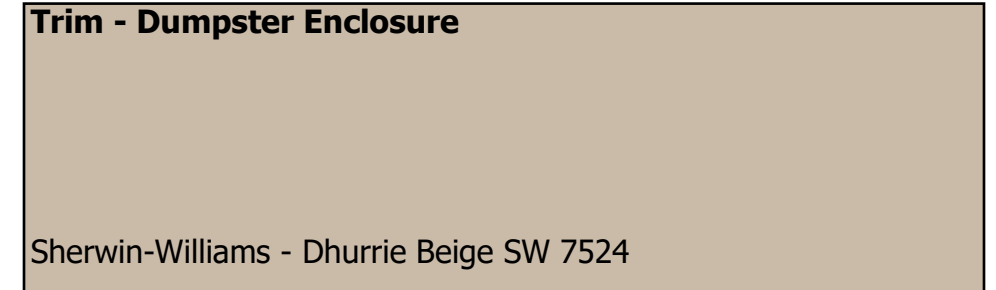
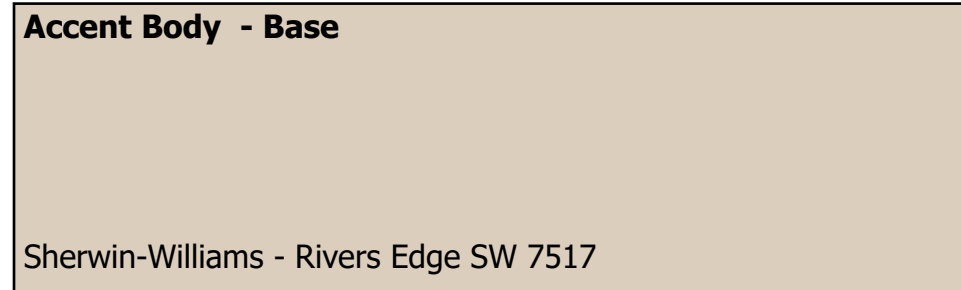
FRONT VIEW



CASSATA SQUARE

A NEW MIXED USE PROJECT
 DESIGNED FOR:
 CS OF VENICE DEVELOPMENT CO.
 625 TAMIAMI TRAIL N.
 VENICE, FL 34285
 11/7/2022





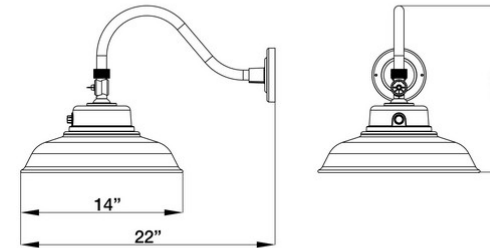
CASSATA SQUARE

A NEW MIXED USE PROJECT
DESIGNED FOR:
CS OF VENICE DEVELOPMENT CO.
625 TAMIAMI TRAIL N.
VENICE, FL 34285
11/7/2022





MORRIS CAT#: 75118A
LED Driverless Gooseneck Flood light
40W, 120/240/277V, 3000K, Black



Features:

- Clear Polycarbonate Lens
- Swivel head fixture
- Operating Temperature: -40°F to 122°F
- Photocell Included
- Powder Coated: Black
- Aluminum Housing
- Environment: IP65 Rated - Suitable for Wet Locations
- Certification: ETL
- 5 Year Limited Warranty

Part#	Input/Wattage	Volts	Lumens	CCT	CRI	Dimming	Light Pattern	Lumens/Watt
75118A	40W	120/240/277	4,800	3000K	>72	N/A	Outdoor	134lm/w

CASSATA SQUARE

A NEW MIXED USE PROJECT
 DESIGNED FOR:
 CS OF VENICE DEVELOPMENT CO.
 625 TAMIAMI TRAIL N.
 VENICE, FL 34285
 11/7/2022

DECORATIVE ACCENT LIGHT





CASSATA SQUARE

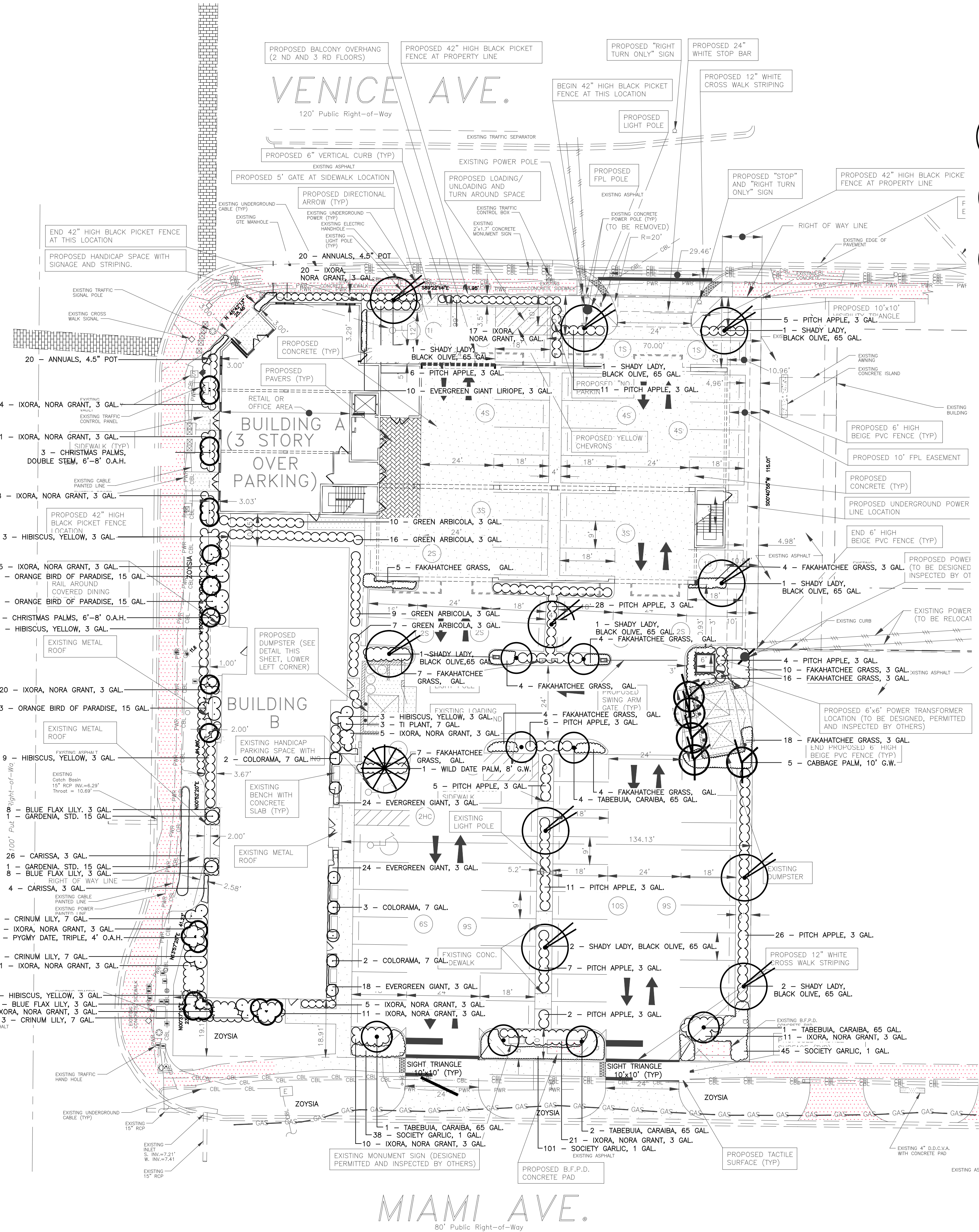
A NEW MIXED USE PROJECT
 DESIGNED FOR:
 CS OF VENICE DEVELOPMENT CO.
 625 TAMIAMI TRAIL N.
 VENICE, FL 34285
 11/7/2022

URBAN CONTEXT PHOTOS

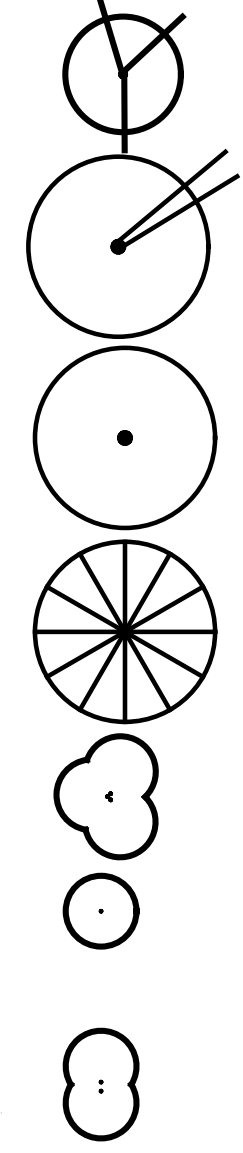


copyright © 2022 Hazeltine Nurseries, Inc. All Rights Reserved.

U.S. 41



PLANT LEGEND - LOTS A & B



- 5 - CABBAGE PALM
SABAL PALMETTO
10' GREY WOOD
- 10 - SHADY LADY BLACK OLIVE
BUCIDIA BUCERAS 'SHADY LADY'
65 GALLON
- 8 - TABELUBIA
TABELUBIA CARAIBA
65 GALLON
- 1 - WILD DATE PALM
PHOENIX SILVESTRIIS
8' GREY WOOD
- 3 - PYGMY DATE PALM
PHOENIX ROBELENI
4' OVERALL HEIGHT, TRIPLE STEM
- 5 - CHRISTMAS PALM
ADONIDIA MERILLII
6' - 8' OVERALL HEIGHT, SINGLE STEM
- 3 - CHRISTMAS PALM
ADONIDIA MERILLII
6' - 8' OVERALL HEIGHT, DOUBLE STEM
- 9 - ORANGE BIRD OF PARADISE
STRELTIZIA REGINAE
15 GALLON
- 2 - GARDENIA, STANDARD
GARDENIA JASMINOIDES 'MIAMI SUPREME'
15 GALLON
- 9 - CRINUM LILY
CRINUM
7 GALLON
- 8 - COLORAMA
DRACAENA MARGINATA 'COLORAMA'
7 GALLON
- 3 - TI PLANT
CORDYLINE FRUTICOSA 'AUNTIE LOU'
7 GALLON
- 76 - EVERGREEN GIANT
LIRIOPE MUSCARI 'EVERGREEN GIANT'
3 GALLON
- 29 - HIBISCUS
HIBISCUS SINGLE YELLOW
3 GALLON
- 34 - BLUE FLAX LILY
DIANELLA TASMANICA
3 GALLON
- 30 - CARISSA
CARISSA MACROCARPA 'BOXWOOD BEAUTY'
3 GALLON
- 71 - FAKAHATCHEE GRASS
TRIPSACUM DACTYLOIDES
3 GALLON
- 184 - SOCIETY GARLIC
[TILBAGHIA VIOLACEA]
1 GALLON

GENERAL LANDSCAPE REQUIREMENTS - LOT A & B

A MINIMUM OF 40 TREE INCHES PER ACRE OF APPROVED TREES ARE REQUIRED.

LOT SIZE = 45,158 SQUARE FEET (1.05 ACRES X 40 = 42.0 TREE INCHES)
REQUIRED TREE INCHES = 42
TREES PROVIDED = 46,999

10 - SHADY LADY BLACK OLIVE TREES, 65 GALLON (10 X 3.0" = 30")
8 - TABELUBIA GOLD TREES, 65 GALLON (8 X 3.0" = 24")
5 - SABAL PALMS, 10' G.W. (1.66 X 3.0" = 5")
SABAL PALMS CALCULATED AT 3 TO 1 RATIO.
1 - WILD DATE PALM, 8' G.W. (0.33 X 1" = 0.33")

ALL REPLACEMENT CANOPY TREES SHALL BE A MINIMUM OF THREE INCHES CALIPER MEASURED NO CLOSER THAN SIX INCHES FROM THE GROUND.

ALL REPLACEMENT UNDERSTORY TREES SHALL BE A MINIMUM OF ONE AND ONE-HALF INCHES CALIPER NO CLOSER THAN SIX INCHES FROM THE GROUND AND BE A MINIMUM EIGHT FOOT IN HEIGHT FROM GRADE.

SABAL PALMETTO MAY BE PLANTED AT A RATE EQUIVALENT TO THREE PALMS TO ONE REQUIRED TREE (THREE TREE INCHES). PALMS SHALL NOT CONSTITUTE MORE THAN TWENTY-FIVE PERCENT OF THE REQUIRED TREE INCHES.

REPLACEMENT TREES SHALL BE FLORIDA NO. 1 OR GREATER.

SOUTH PROPERTY LANDSCAPE BUFFER - LOT A & B

- 125.39' OF FRONTAGE WITH VEHICULAR USE.
- 1 TREE PER 50 LINEAR FEET REQUIRED.
- 3 TREES REQUIRED.
- 4 TOTAL TREES PROVIDED.
- 4 CANOPY TREES PROVIDED.
* 4 - TABELUBIA CARAIBA TREES.
- MINIMUM TREE SIZE REQUIREMENTS:
* 10' OVERALL HEIGHT.
* 4' SPREAD.
* 3" CALIPER AT 6" ABOVE GRADE.
- MINIMUM 5' WIDE LANDSCAPE BUFFER WITH CONTINUOUS HEDGE.
- MINIMUM SHRUB SIZE REQUIREMENTS:
* 24" HEIGHT AT PLANTING.
* 36" ON CENTER SPACING.
- NO TREES OR SHRUBS TO BE PLANTED WITHIN 6' OF UNDERGROUND UTILITY APPURTENANCES.
- PER SECTION 86-437 OF THE VENICE FLORIDA CODE OF ORDINANCES.
- SEE ENVIRONMENTALIST PLAN FOR ADDITIONAL PROPOSED PLANTINGS ALONG SOUTH PROPERTY LINE. SHEET # SEPI

EAST PROPERTY LANDSCAPE BUFFER - LOT A & B

- 153.51' OF FRONTAGE WITH VEHICULAR USE.
- 1 TREE PER 50 LINEAR FEET REQUIRED.
- 0 TREES REQUIRED.
- 3 TOTAL TREES PROVIDED.
- 3 CANOPY TREES PROVIDED.
* 3 - SHADY LADY BLACK OLIVE TREES.
- MINIMUM TREE SIZE REQUIREMENTS:
* 10' OVERALL HEIGHT.
* 4' SPREAD.
* 3" CALIPER AT 6" ABOVE GRADE.
- NO LANDSCAPE BUFFER REQUIRED WHEN ABUTTING AN ALLEY.
- MINIMUM SHRUB SIZE AND SPACING REQUIREMENTS:
* 24" HEIGHT AT PLANTING.
* 36" ON CENTER SPACING.
- NO TREES OR SHRUBS TO BE PLANTED WITHIN 6' OF UNDERGROUND UTILITY APPURTENANCES.
- PER SECTION 86-436 OF THE VENICE FLORIDA CODE OF ORDINANCES.

INTERIOR LANDSCAPE - LOT A & B

- 40 - TOTAL NUMBER OF INTERIOR PARKING SPACES NOT ADJACENT TO PERIMETER LANDSCAPE BUFFERS.
- 10 SQUARE FEET OF INTERIOR LANDSCAPE REQUIRED PER PARKING SPACE.
- 9,964.01 - TOTAL SQUARE FEET OF OTHER VEHICLE USE AREAS.
- 10 SQUARE FEET OF INTERIOR LANDSCAPE REQUIRED PER 500 SQUARE FEET OF OTHER VEHICLE USE AREAS.
- 199.29 SQUARE FEET OF INTERIOR LANDSCAPE REQUIRED FOR OTHER VEHICULAR USE AREAS.
- 599.29 TOTAL SQUARE FEET OF INTERIOR LANDSCAPE REQUIRED FOR PARKING AND OTHER VEHICULAR USE AREAS.
- 975.96 TOTAL SQUARE FEET OF INTERIOR LANDSCAPE PROVIDED.
- 1 TREE PER 50 LINEAR FEET OF ABUTTING TIERS OF PARKING REQUIRED.
- 103 LINEAR FEET OF ABUTTING TIERS OF PARKING PROPOSED.
- 3 TREES REQUIRED FOR ABUTTING TIERS OF PARKING.
- 3 TREES PROVIDED FOR ABUTTING TIERS OF PARKING.
* 3 - SHADY LADY BLACK OLIVE TREES.
* 1 TREE PER 100 SQUARE FEET OF REQUIRED INTERIOR SPACE IS REQUIRED.
- 6 TREES REQUIRED FOR INTERIOR LANDSCAPE REQUIRED.
- 7 TREES PROVIDED FOR INTERIOR LANDSCAPE.
* 3 - SHADY LADY BLACK OLIVE TREES.
* 4 - TABELUBIA CARAIBA TREES.
- MINIMUM TREE SIZE REQUIREMENTS:
* 10' OVERALL HEIGHT.
* 4' SPREAD.
* 3" CALIPER AT 6" ABOVE GRADE.
- MINIMUM SHRUB SIZE REQUIREMENTS:
* 24" HEIGHT AT PLANTING.
* 36" ON CENTER SPACING.
- NO TREES OR SHRUBS TO BE PLANTED WITHIN 6' OF UNDERGROUND UTILITY APPURTENANCES.
- PER SECTION 86-437 AND SECTIONS 86-460 THROUGH 86-464 OF THE VENICE FLORIDA CODE OF ORDINANCES.

WEST PROPERTY LANDSCAPE BUFFER - LOT A & B

- 0.0' OF FRONTAGE WITH VEHICULAR USE.
- 1 TREE PER 50 LINEAR FEET REQUIRED.
- 0 TREES REQUIRED.
- 0 TOTAL TREES PROVIDED.
- 0 CANOPY TREES PROVIDED.
- MINIMUM TREE SIZE REQUIREMENTS:
* 10' OVERALL HEIGHT.
* 4' SPREAD.
* 3" CALIPER AT 6" ABOVE GRADE.
- NO LANDSCAPE BUFFER REQUIRED.
- MINIMUM SHRUB SIZE AND SPACING REQUIREMENTS:
* 24" HEIGHT AT PLANTING.
* 36" ON CENTER SPACING.
- NO TREES OR SHRUBS TO BE PLANTED WITHIN 6' OF UNDERGROUND UTILITY APPURTENANCES.
- PER SECTION 86-436 OF THE VENICE FLORIDA CODE OF ORDINANCES.

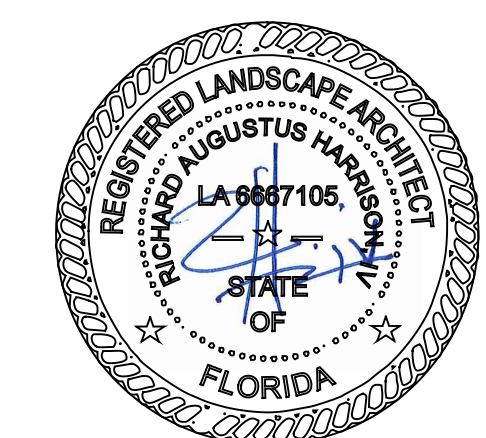
NORTH PROPERTY LANDSCAPE BUFFER - LOT A & B

- 124.0' OF FRONTAGE WITH VEHICULAR USE.
- 1 TREE PER 50 LINEAR FEET REQUIRED.
- 3 TREES REQUIRED.
- 3 TOTAL TREES PROVIDED.
- 3 CANOPY TREES PROVIDED.
* 3 - SHADY LADY BLACK OLIVE TREES.
- MINIMUM TREE SIZE REQUIREMENTS:
* 10' OVERALL HEIGHT.
* 4' SPREAD.
* 3" CALIPER AT 6" ABOVE GRADE.
- MINIMUM 5' WIDE LANDSCAPE BUFFER WITH CONTINUOUS HEDGE.
- MINIMUM SHRUB SIZE AND SPACING REQUIREMENTS:
* 24" HEIGHT AT PLANTING.
* 36" ON CENTER SPACING.
- CONTINUOUS HEDGE AT 36" ON CENTER PROVIDED.
- NO TREES OR SHRUBS TO BE PLANTED WITHIN 6' OF UNDERGROUND UTILITY APPURTENANCES.
- PER SECTION 86-436 OF THE VENICE FLORIDA CODE OF ORDINANCES.

CASSATA SQUARE A & B SITE, SIGNAGE AND STRIPING PLAN

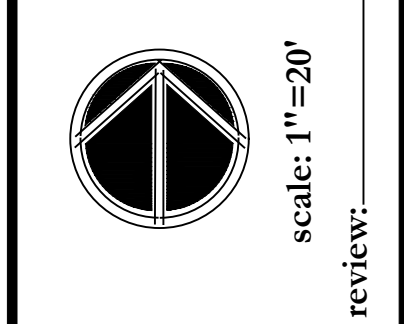
18-2365AB

1 4-14-22 SAG REVISE PLAN AS PER CITY COMMENTS.



04-28-2022

sheet number
LS-1
of
1



design: r. harrison
drawn: ck
date: 03.12.19
revised: 02.02.2022
03.22.2022
04.28.2022
job#: 024519

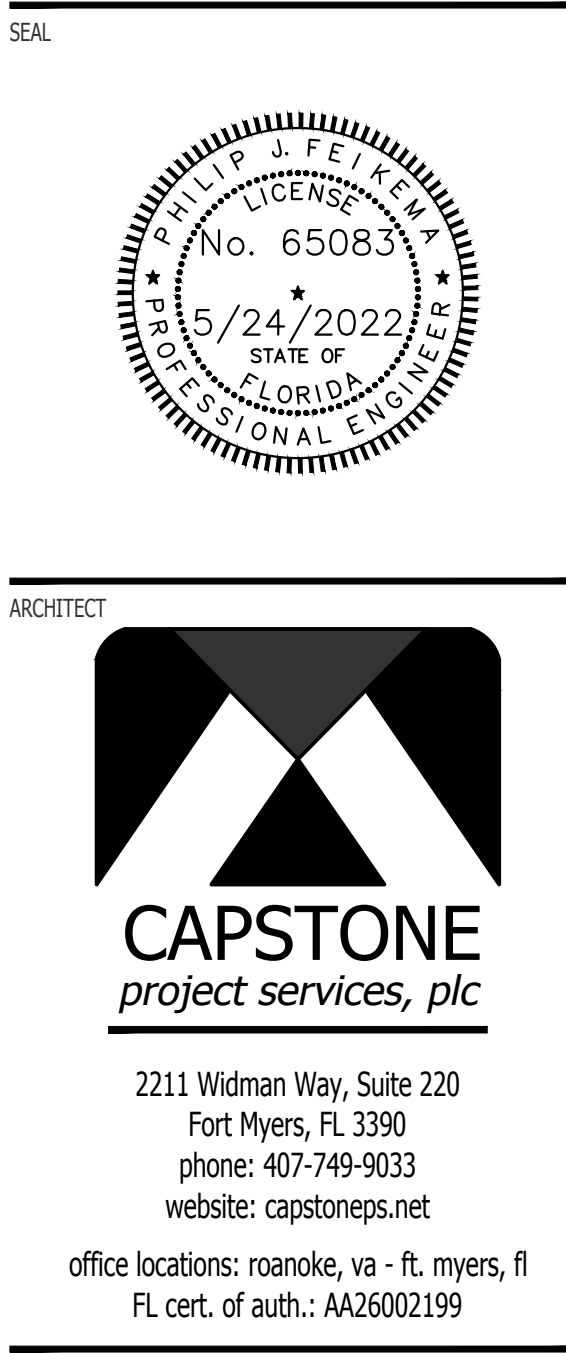
site information taken from
any other information
survey provided by:
P.L.E.I.R.
10225 Ulmerton Road, Suite 4D
Largo, FL 34647
727-486-5207
03.11.19

Richard A. Harrison is a
Florida Registered Landscape
Architect
LA 9687106

A Proposed Landscape Plan for:
THE CASSATA SQUARE LOTS A AND B
miami avenue & u.s. 41
venice, florida 34285

2401 North River Road
Venice, Florida 34292
P.O. Box 236
Venice, Florida 34284-0236
phone: 941.485.1272
fax: 941.488.6236
www.hazeltinenurseries.com
info@hazeltinenurseries.com





ARCHITECT

2211 Widman Way, Suite 220
 Fort Myers, FL 33909
 phone: 407-749-9033
 website: capstoneps.net

office locations: roanoke, va - ft. myers, fl
 FL cert. of auth.: AA26002199

CONSULTANTS

08 JOB #: 5623.20.00

INFO@GLOBAL-SANCHEZ.COM
 CA#: 6237

816 MANATEE AVE. E. SUITE 1B
 BRADENTON, FL 34208
 PHONE: 941-758-2551

3825 HENDERSON BLVD.,
 SUITE 103
 TAMPA, FL 33629
 PHONE: 813-281-0001

PROJECT INFO

CASSATA SQUARE
 A NEW MIXED USE
 PROJECT
 DESIGNED FOR:
 CS OF VENICE
 DEVELOPMENT CO.
 625 TAMAMI TRAIL N.
 VENICE, FL 34285

SHEET TITLE

REVISIONS

MARK	DATE	DESCRIPTION
1	11/12/20	PERMIT COMMENTS
2		
4	05/05/22	SITE LIGHTING

PROJECT NO: CPS2020-001.4
 CAD DWG FILE:
 DRAWN BY: M. NUNEZ
 CHECK'D BY: P. FEIKEMA
 DATE: 8/21/2020 - FOR CONSTRUCTION

SHEET NO.

GENERAL NOTES

- "GENERAL NOTES APPLY TO ALL ELECTRICAL SHEETS"
- DO NOT SCALE FROM THESE DRAWINGS.
 - ALL WORK SHALL BE PERFORMED IN STRICT ACCORDANCE WITH THE 2014 EDITION OF THE NATIONAL ELECTRICAL CODE (NEC) NFPA 70.
 - ELECTRICAL CONTRACTOR (E.C.) SHALL COORDINATE WORK WITH ALL OTHER TRADES TO ASSURE PROPER CLEARANCES FOR EQUIPMENT AND TO KEEP THE JOB PROTECTED.
 - DRAWINGS ARE BASED ON FIELD OBSERVATION AND EXISTING DOCUMENTS. REPORT ANY DISCREPANCIES TO THE ENGINEER BEFORE DISTURBING EXISTING INSTALLATION.
 - EXISTING TO REMAIN ELECTRICAL CIRCUITRY DOWNSTREAM AND UPSTREAM OF DEMOLISHED DEVICES SHALL BE MAINTAINED. E.C. SHALL PROVIDE ALL ELECTRICAL COMPONENTS (BOXES, CONDUIT, WIRING, ETC.) AS REQUIRED.
 - ELECTRICAL CONTRACTOR SHALL BE REQUIRED TO CUT, CAPTURE AND EXTEND OR RE-ROUTE EXISTING CONDUITS AND CONDUCTORS AS REQUIRED TO ACCOMMODATE NEW DUCTWORK TO BE INSTALLED. COORDINATE WITH MECHANICAL CONTRACTOR AS REQUIRED.
 - REFER TO MECHANICAL DRAWINGS FOR EQUIPMENT NEEDING ELECTRICAL CONNECTIONS (MOTORS, FANS, PUMPS, ETC.). MAKE ALL CONNECTIONS AND PROVIDE APPROPRIATE WIRE, CONDUIT, AND OVERCURRENT PROTECTION FOR ALL EQUIPMENT. INSTALL ANY ELECTRICAL EQUIPMENT (STARTERS, RELAYS, VFD'S, ETC.) FURNISHED BY MECHANICAL CONTRACTOR (DIV 15). COORDINATE EXACT REQUIREMENTS WITH MECHANICAL CONTRACTOR.
 - VOLTAGE DROP: THE CONDUCTORS FOR FEEDERS AND BRANCH CIRCUITS COMBINED SHALL BE SIZED FOR A MAXIMUM OF 5% VOLTAGE DROP TOTAL PER FCG-ENERGY C405.6.3. USE 10 AWG CU CONDUCTORS FOR 20 AMPERE, 120 VOLT BRANCH CIRCUITS LONGER THAN 75 FEET. USE 10 AWG CU WHERE WIRE SIZE IS INCREASED IN SIZE FOR VOLTAGE DROP. E.G. SHALL BE INCREASED PROPORTIONATELY. PER NEC 250.122 (B).
 - ALL CEILING MOUNTED ITEMS SHALL BE INSTALLED IN ACCORDANCE WITH THE ARCHITECTURAL REFLECTED CEILING PLANS. IF LOCATION FOR AN ITEM IS NOT SHOWN ON THE ARCHITECTURAL REFLECTED CEILING PLANS, VERIFY THE EXACT LOCATION OF THE ITEM WITH THE ARCHITECT PRIOR TO INSTALLATION.
 - WHERE DISCONNECTING MEANS IS NOT PROVIDED "WITHIN SIGHT" FROM EQUIPMENT SERVED, THE OVERCURRENT DEVICE SERVING SUCH EQUIPMENT SHALL HAVE PERMANENT PROVISION TO LOCK IN THE OPEN POSITION PER NEC 422.31 AND 110.25.
 - CONDUIT RUNS SHOWN ARE DIAGRAMMATIC IN NATURE. ELECTRICAL CONTRACTOR SHALL BE RESPONSIBLE FOR SIZING AND LOCATING PULL BOXES PER NEC.
 - PROVIDE ALL H.I.D. AND FLUORESCENT LIGHT FIXTURES WITH INTEGRAL FUSING.
 - CONNECT EXIT SIGNS AND EGRESS LIGHTS TO LOCAL LIGHTING CIRCUIT AHEAD OF ANY SWITCHING PER NEC 700.12(F).
 - RECEPTACLES IN MECHANICAL ROOMS, ELECTRICAL ROOMS, STORAGE ROOMS, AND JANITOR CLOSETS SHALL BE G.F.C.I. TYPE MOUNTED AT 48" AFF.

CONDUIT AND CONDUCTOR SCHEDULE

C.B.	POLES	WIRE SIZE (TYPE THW)	CONDUIT	PHASE
20A	2	2#12, 1#12 E.G.	3/4"	10 2W
	3	3#12, 1#12 E.G.		30 3W
	3	3#12, 1#12 N, 1#12 E.G.		30 4W
25A	2	2#10, 1#10 E.G.	3/4"	10 2W
	3	3#10, 1#10 E.G.		30 3W
	3	3#10, 1#10 N, 1#10 E.G.		30 4W
30A	2	2#10, 1#10 E.G.	3/4"	10 2W
	3	3#10, 1#10 E.G.		30 3W
	3	3#10, 1#10 N, 1#10 E.G.		30 4W
35A	2	2#8, 1#8 E.G.	1"	10 2W
	3	3#8, 1#8 E.G.		30 3W
	3	3#8, 1#8 N, 1#8 E.G.		30 4W
40A	2	2#8, 1#8 E.G.	1"	10 2W
	3	3#8, 1#8 E.G.		30 3W
	3	3#8, 1#8 N, 1#8 E.G.		30 4W
45A	2	2#8, 1#8 E.G.	1"	10 2W
	3	3#8, 1#8 E.G.		30 3W
	3	3#8, 1#8 N, 1#8 E.G.		30 4W
50A	2	2#8, 1#8 E.G.	1"	10 2W
	3	3#8, 1#8 E.G.		30 3W
	3	3#8, 1#8 N, 1#8 E.G.		30 4W
60A	2	2#6, 1#6 E.G.	1 1/4"	10 2W
	3	3#6, 1#6 E.G.		30 3W
	3	3#6, 1#6 N, 1#6 E.G.		30 4W
70A	2	2#4, 1#4 E.G.	1 1/4"	10 2W
	3	3#4, 1#4 E.G.		30 3W
	3	3#4, 1#4 N, 1#4 E.G.		30 4W
80A	2	2#4, 1#4 E.G.	1 1/4"	10 2W
	3	3#4, 1#4 E.G.		30 3W
	3	3#4, 1#4 N, 1#4 E.G.		30 4W
90A	2	2#3, 1#3 E.G.	1 1/4"	10 2W
	3	3#3, 1#3 E.G.		30 3W
	3	3#3, 1#3 N, 1#3 E.G.		30 4W
100A	2	2#3, 1#3 E.G.	1 1/4"	10 2W
	3	3#3, 1#3 E.G.		30 3W
	3	3#3, 1#3 N, 1#3 E.G.		30 4W

- NOTES:
- ALL CONDUCTORS SHALL BE COPPER.
 - ALL CONDUIT SHALL HAVE EQUIPMENT GROUNDING CONDUCTOR INSTALLED.
 - CONDUIT BELOW GRADE OUTSIDE OF BUILDING SHALL BE 1" MINIMUM.
 - SIZING OF CONDUCTORS SHALL BE ALTERED FOR DERATING PER N.E.C. OR VOLTAGE DROP CONSIDERATIONS.
 - SEE RISER DIAGRAM FOR SIZING OF CIRCUITS GREATER THAN 100A.
 - USE #10 AWG COPPER CONDUCTORS FOR 20 AMPERE, 120 VOLT BRANCH CIRCUITS LONGER THAN 75 FEET. USE #10 AWG COPPER CONDUCTORS FOR 20 AMPERE, 277 VOLT BRANCH CIRCUITS LONGER THAN 200 FEET. WHERE WIRE SIZE IS INCREASED IN SIZE FOR VOLTAGE DROP, EQUIPMENT GROUND SHALL BE INCREASED PROPORTIONATELY PER NEC 250.122 (B).
 - WHERE MC CABLE IS ALLOWED BY THE AUTHORITY HAVING JURISDICTION, THE CONDUCTORS FOR MC CABLE SHALL BE THIN. JACKET SHALL BE THE MANUFACTURER'S STANDARD SIZE FOR CONDUCTORS UTILIZED.

ELECTRICAL SHEET INDEX

- E0.1** - ELECTRICAL GENERAL
- E0.2** - ELECTRICAL SPECIFICATIONS
- E1.1** - ELECTRICAL SITE PLAN
- E1.2** - ELECTRICAL PHOTOMETRIC SITE PLAN
- E4.1** - ELECTRICAL 1ST AND 2ND FLOOR LIGHTING PLAN
- E4.2** - ELECTRICAL ROOF PROPOSED PLAN
- E5.1** - ELECTRICAL 1ST AND 2ND FLOOR POWER PLAN
- E5.2** - ELECTRICAL ROOF PROPOSED POWER PLAN
- E7.1** - ELECTRICAL SCHEDULES
- E8.1** - ELECTRICAL RISER DIAGRAMS
- E9.1** - ELECTRICAL DETAILS

ELECTRICAL SYMBOL LEGEND

SWITCHES

- § SENSOR SWITCH SPDM/ MANUAL/AUTOMATIC SWITCH. SWITCH HAS PUSH-BUTTON OVERRIDE IF OCCUPANTS ARE PRESENT. RECESS MOUNT 4" AFF TO CENTER OF BACKBOX. "3" OR "4" INDICATES SWITCH IS USED FOR 3-WAY OR 4-WAY OPERATION. FOLLOW MANUFACTURER'S WIRING DIAGRAM FOR CONNECTION OF SWITCHES.
- "2P" INDICATES 2-POLE SWITCH
- "3" INDICATES THREE-WAY SWITCH
- "4" INDICATES FOUR-WAY SWITCH
- "30A" INDICATES THE AMPERAGE OF THE SWITCH FOR NON-STANDARD SWITCHES
- "D" INDICATES 0-10V DIMMER SWITCH. COORDINATE REQUIREMENTS WITH LIGHT FIXTURE(S) TO BE DIMMED.
- "K" INDICATES KEY SWITCH. PROVIDE OWNER WITH (2) KEYS PER SWITCH. MATCH ANY EXISTING KEYS IF RENOVATION. VERIFY KEY TYPE (MANUFACTURER) WITH OWNER
- "M" INDICATES THE SWITCH SHALL BE MOTOR DUTY RATED
- "OS" INDICATES OCCUPANCY SENSOR SWITCH (SENSOR SWITCH WSX PDT)
- "TS" INDICATES INTERVAL TIMER SWITCH PROGRAMMED FOR 30 MINUTES MAXIMUM ALLOWED TIME (SENSOR SWITCH PT860)
- "P" INDICATES SWITCH WITH PILOT LIGHT.
- "R" INDICATES DEVICE SHALL BE A RED COLOR. DEVICE IS CONNECTED TO A CIRCUIT FED FROM A GENERATOR (IF APPLICABLE).
- § LOWER CASE LETTER (i.e. "a") INDICATES THE FIXTURE(S) CONTROLLED BY THE SWITCH.

LIGHTING FIXTURES (REFER TO THE "LIGHTING FIXTURE SCHEDULE")

- 2' x 4' FLUORESCENT LIGHT FIXTURE (SEE LIGHT FIXTURE SCHEDULE)
 NOTE: THE FOLLOWING ABBREVIATIONS APPLY TO LIGHTING FIXTURES WHERE INDICATED:
 UPPER CASE LETTER/NUMBER (i.e. "A2") INDICATES FIXTURE TYPE. LOWER CASE LETTER (i.e. "b") INDICATES CONNECTION TO INDICATED SWITCH. NOTE: THE FOLLOWING ABBREVIATIONS APPLY TO LIGHTING FIXTURES WHERE INDICATED:
 "EM" INDICATES LIGHT FIXTURE WITH EMERGENCY BATTERY PACK.
 FLUORESCENT LIGHT FIXTURE (SEE LIGHT FIXTURE SCHEDULE)
- DOWNLIGHT
- WALL SCONCE
- PENDANT
- EXIT SIGN WITH BATTERY PACK, MOUNTED WITHIN 6"-8" OF TOP OF OPENING PER NFPA 101.7.10.1.9. FACES AND ARROWS SHALL BE AS INDICATED ON PLANS. CONNECT FIXTURE TO LIGHTING CIRCUIT SERVING THE AREA. AHEAD OF ANY SWITCHING OR CONTROLS.
- EMERGENCY EGRESS LIGHTING UNIT WITH BATTERY PACK MOUNTED 7'-8" AFF OR AS INDICATED. CONNECT FIXTURE TO LIGHTING CIRCUIT SERVING THE AREA. AHEAD OF ANY SWITCHING OR CONTROLS.
- EXIT SIGN AND EMERGENCY EGRESS LIGHTING COMBO UNIT WITH BATTERY PACK MOUNTED 7'-8" AFF. CONNECT FIXTURE TO LIGHTING CIRCUIT SERVING THE AREA. AHEAD OF ANY SWITCHING OR CONTROLS.
- PASSIVE INFRARED (PIR) OCCUPANCY SENSOR, 360° x 450 SQ. FT. COVERAGE. SENSOR SWITCH CM-10. CONNECT TO LOCAL POWER PACK.
- MULTI-TECHNOLOGY (PIR & ULTRASONIC) OCCUPANCY SENSOR, 360° x 1000 SQ. FT. COVERAGE. SENSOR SWITCH CM-PDT-10. CONNECT TO LOCAL POWER PACK.
- EXTERIOR PASSIVE INFRARED (PIR) OCCUPANCY SENSOR SBO-10-OEX. CONNECT TO LOCAL POWER PACK. PROVIDE BOX FOR CEILING MOUNTING.
- OCCUPANCY SENSOR POWER PACK, 20A @ 120/277VAC. PROVIDE QUANTITY AS NEEDED. SENSOR SWITCH PP-20-2P. CONNECT TO LOCAL OCCUPANCY SENSORS.
- LED POWER SUPPLY (TECLED MODEL: VBS-12060024)

COMMUNICATIONS

- 1-GANG DEEP BOX FOR TELEPHONE OUTLET. RECESS MOUNT 18" TO CENTER OF BACKBOX AFF. ABOVE COUNTER OR AS NOTED. INSTALL 3/4" CONDUIT WITH BUSHINGS AND PULL STRING STUBBED INTO TO ACCESSIBLE CEILING SPACE ABOVE BACKBOX. INSTALL BLANK COVERPLATE. NUMBER OF PHONE JACKS AS INDICATED OR INSTALL BLANK COVERPLATE. "W" INDICATES PHONE WILL BE WALL MOUNTED, MOUNT AT 48" AFF TO CENTER OF BACKBOX AND INSTALL WALL PHONE PLATE.
- (2) GANG DEEP BOX FOR DECORA STYLE DUPLEX RECEPTACLE AND TELEVISION OUTLET. COORDINATE MOUNTING HEIGHT AND LOCATION. INSTALL 3/4" CONDUIT FOR LOW VOLTAGE WIRING WITH BUSHINGS AND PULL STRING STUBBED INTO ACCESSIBLE CEILING SPACE ABOVE BACKBOX. INSTALL DECORA COVERPLATE.
- 1-GANG DEEP BOX FOR TELEPHONE / DATA OUTLET. RECESS MOUNT 18" TO CENTER OF BACKBOX AFF. ABOVE COUNTER OR AS NOTED. INSTALL 3/4" CONDUIT WITH BUSHINGS AND PULL STRING STUBBED INTO ACCESSIBLE CEILING SPACE ABOVE BACKBOX. INSTALL BLANK COVERPLATE.
- CABINET. SEE PLANS AND SPECIFICATIONS FOR USAGE AND REQUIREMENTS.

MISCELLANEOUS

- KEYED NOTE INDICATOR. REFER TO THE "KEYED NOTES" WHERE INDICATED.
- EXHAUST FAN.
- "R" SYMBOL INDICATES TO PROVIDE AND INSTALL 10 MINUTE TIME DELAY OFF RELAY. EXHAUST FAN SHALL OPERATE FOR 10 MINUTES AFTER LIGHTING SWITCH IS TURNED OFF. CONNECT HOT LEAD FROM AHEAD OF SWITCH TO RELAY FOR DELAYED OPERATION AND SWITCH LEG TO RELAY FOR NORMAL OPERATION.
- "T" SYMBOL INDICATES TO PROVIDE AND INSTALL 277V-120V TRANSFORMER. WATTAGE OF TRANSFORMER VA SHALL BE A MINIMUM 20% GREATER THAN EXHAUST FAN POWER REQUIREMENTS. COORDINATE WITH MECHANICAL CONTRACTOR.
- MOTORIZED DAMPER. PROVIDE POWER AND MAKE CONNECTIONS AS INDICATED. COORDINATE WITH MECHANICAL CONTRACTOR.
- CEILING MOUNTED SPEAKER LOCATIONS ON ANY SYSTEM

ABBREVIATIONS

AFG	HEIGHT ABOVE FINISHED FLOOR	REL	RELOCATED
REM	TO BE REMOVED		
ETR	EXISTING TO REMAIN	REP	REPLACE WITH NEW
EXT	EXTERIOR	TBR	TO BE RELOCATED
	TYPE WIRING DEVICE OR CIRCUIT	U.N.O.	UNLESS NOTED OTHERWISE
BREAKER		VA	VOLT AMPERE (POWER)
LTG	LIGHTING	WP	WEATHERPROOF ENCLOSURE
MTR	MOTOR	XFMR	TRANSFORMER
N.I.C.	NOT IN CONTRACT	+48"	DEVICE MOUNTED AT HEIGHT
NF	NON-FUSED	INDICATED	
PH	PHASE		

SPECIAL INFORMATIONAL NOTE:

THIS DRAWING PREPARED FOR TENANT IMPROVEMENTS TO AN EXISTING BUILDING OR BUILDING CONSTRUCTED BY OTHERS

IT IS UNDERSTOOD THAT ANY WARRANTY INFORMATION CONCERNING EQUIPMENT INSTALLED MUST BE FORWARDED TO THE OWNER AND THAT ANY AND ALL CONTRACTORS SHALL GUARANTEE THEIR WORK FOR A PERIOD OF ONE YEAR FROM THE DATE OF OWNERS ACCEPTANCE.

ENGINEER IS NOT RESPONSIBLE FOR MATERIALS, METHODS, INSTALLATION, AND CONSTRUCTION WHICH DEVIATE FROM CONSTRUCTION DOCUMENTS AND SPECIFICATIONS.

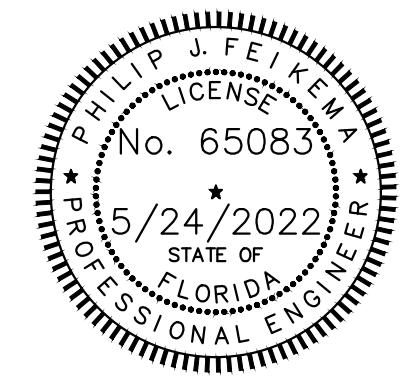
WIRING DEVICES

NOTE: THE FOLLOWING ABBREVIATIONS APPLY TO WIRING DEVICES WHERE INDICATED:
 INDICATES WEATHERPROOF WHILE IN USE ENCLOSURE. ENCLOSURE SHALL HAVE LOCKABLE COVER. DEVICES SHALL BE LISTED AS WEATHER RESISTANT. (WR)
 INDICATES DEVICE MOUNTED BEHIND ELECTRIC WATER COOLER ENCLOSURE. COORDINATE DEVICE LOCATION WITH PLUMBING CONTRACTOR AND APPROVED SHOP DRAWINGS PRIOR TO ROUGH-IN. CIRCUIT BREAKER SHALL BE GFCI TYPE.
 INDICATES HORIZONTALLY MOUNTED WIRING DEVICE.
 INDICATES DEVICE SHALL BE A RED COLOR. DEVICE IS CONNECTED TO A CIRCUIT FED FROM THE GENERATOR (IF APPLICABLE).
 INDICATES RECEPTACLE MOUNTED IN FLOOR DUCT. INSTALL ACCESSORIES FOR MOUNTING OF RECEPTACLE IN FLOOR DUCT SYSTEM.
 ISOLATED GROUND.
 INDICATES RECEPTACLE WITH US OUTLETS.
 20 AMP SIMPLEX RECEPTACLE. RECESS MOUNT 18" AFF TO CENTER OF BACKBOX OR AT HEIGHT INDICATED.
 20 AMP DUPLEX RECEPTACLE. RECESS MOUNT 18" AFF TO CENTER OF BACKBOX.
 20 AMP DUPLEX RECEPTACLE. RECESS MOUNT AT HEIGHT INDICATED OR ABOVE COUNTER, CASEWORK, ETC. COORDINATE MOUNTING HEIGHT WITH ARCHITECTURAL ELEVATIONS AND EXISTING CONDITIONS PRIOR TO ROUGH-IN.
 20 AMP DUPLEX RECEPTACLE WITH ARC FAULT INTERRUPTER (AFCI) PROTECTION. RECESS MOUNT AT HEIGHT INDICATED OR ABOVE COUNTER, CASEWORK, ETC. COORDINATE MOUNTING HEIGHT WITH ARCHITECTURAL ELEVATIONS AND EXISTING CONDITIONS PRIOR TO ROUGH-IN.
 20 AMP DUPLEX RECEPTACLE WITH ARC FAULT INTERRUPTER (AFCI) PROTECTION. RECESS MOUNT 18" AFF TO CENTER OF BACKBOX. 1 OF 2 RECEPTACLES IS SWITCHED, REMOVE JUMPER BETWEEN OUTLETS.
 20 AMP DUPLEX RECEPTACLE WITH ARC FAULT CIRCUIT INTERRUPTER (AFCI) PROTECTION. RECESS MOUNT 18" AFF TO CENTER OF BACKBOX.
 20 AMP DOUBLE DUPLEX (QUAD) RECEPTACLE WITH COMMON COVER PLATE. RECESS MOUNT 18" AFF TO CENTER OF BACKBOX.
 20 AMP DOUBLE DUPLEX (QUAD) RECEPTACLE WITH COMMON COVER PLATE. RECESS MOUNT ABOVE COUNTER, CASEWORK, ETC. OR AT HEIGHT INDICATED. COORDINATE MOUNTING HEIGHT WITH ARCHITECTURAL ELEVATIONS AND CONDITIONS PRIOR TO ROUGH-IN.
 20 AMP DUPLEX RECEPTACLE. RECESS MOUNT 18" AFF TO CENTER OF BACKBOX. 1 OF 2 RECEPTACLES IS SWITCHED. REMOVE JUMPER BETWEEN OUTLETS.
 20 AMP DUPLEX RECEPTACLE. RECESS FLUSH WITH FLOOR IN SINGLE GANG FLOOR BOX. COVER SHALL BE BRASS WITH HINGED LID FOR EACH OUTLET OF RECEPTACLE.
 20 AMP DOUBLE DUPLEX (QUAD) RECEPTACLE. RECESS FLUSH WITH FLOOR IN DOUBLE GANG FLOOR BOX. COVER SHALL BE BRASS WITH HINGED LID FOR EACH OUTLET OF RECEPTACLES.
 20A SIMPLEX RECEPTACLE WITH GFCI PROTECTION MOUNTED AT HEIGHT OR AS INDICATED. VERIFY RATING AND NEMA CONFIGURATION FOR EQUIPMENT TO BE CONNECTED.
 20 AMP DUPLEX RECEPTACLE WITH GFCI PROTECTION. RECESS MOUNT 18" AFF TO CENTER OF BACKBOX.
 20 AMP DUPLEX RECEPTACLE WITH GFCI PROTECTION. RECESS MOUNT ABOVE SINK, COUNTER, CASEWORK, ETC. OR AT HEIGHT INDICATED. COORDINATE MOUNTING HEIGHT WITH ARCHITECTURAL ELEVATIONS AND CONDITIONS PRIOR TO ROUGH-IN.
 20 AMP DOUBLE DUPLEX (QUAD) RECEPTACLE WITH GFCI PROTECTION AND COMMON COVER PLATE. RECESS MOUNT 18" AFF TO CENTER OF BACKBOX.
 MULTIPLE POLE RECEPTACLE FOR APPLIANCE MOUNTED AS INDICATED. COORDINATE AMPERAGE RATING, POLES, NEMA CONFIGURATION, ETC. WITH EQUIPMENT TO BE CONNECTED.
 20 AMP DUPLEX RECEPTACLE. RECESS MOUNT HORIZONTALLY AT HEIGHT INDICATED.
 20 AMP DUPLEX RECEPTACLE MOUNTED 18" AFF. ABOVE COUNTER, OR AT HEIGHT INDICATED (INDICATES RECEPTACLE COORDINATED WITH DATA OUTLET FOR COMPUTER USE).
 20 AMP DOUBLE DUPLEX (QUAD) RECEPTACLE MOUNTED 18" AFF. ABOVE COUNTER, OR AT HEIGHT INDICATED (INDICATES RECEPTACLE COORDINATED WITH DATA OUTLET FOR COMPUTER USE).
 POWER POLE, 2-SECTION (POWER AND COMMUNICATIONS), 2" SQUARE METALLIC. BRUSHED ALUMINUM FINISH. DEVICES MOUNTED AT POLE AS SHOWN. POLE SHALL EXTEND FROM FLOOR TO CEILING. SECURE TO CEILING.
 20 AMP DUPLEX RECEPTACLE. FLUSH MOUNT AT CEILING. SUPPORT BACKBOX FROM STRUCTURE. NOT GRID.
 2-SECTION FLOOR BOX WITH DUPLEX RECEPTACLE AND DATA SECTION. FLOOR BOX SHALL BE FLUSH WITH FLOOR WITH CARPET/TILE PLATE AND TRAP DOOR FOR WIRING OUT OF BOX.
 JUNCTION BOX. FAN RATED IN DWELLING UNITS.
 DROP CORD. RECEPTACLE AND BOX SUSPENDED FROM JUNCTION BOX AT CEILING WITH S/O CORD. PROVIDE STRAIN RELIEF AT EACH END OF CORD. RECEPTACLE SHALL BE TYPE OF DEVICE SHOWN.
 PLUGMOLD WITH RECEPTACLES 12" ON-CENTER. PLUGMOLD SHALL BE NON-METALLIC, 2-PIECE. MOUNT AS INDICATED. VERIFY COLOR OF FINISH.
 POWER DISTRIBUTION (REFER TO THE "ELECTRICAL RISER DIAGRAM")
 PANELBOARD. RECESS MOUNT IN FINISHED SPACES. SURFACE MOUNT IN BACK OF HOUSE. REFER TO THE "PANELBOARD SCHEDULE".
 FEEDER OR BRANCH CIRCUIT RACEWAY CONCEALED IN WALL, CEILING, FEEDER OR BRANCH CIRCUIT RACEWAY CONCEALED UNDER FLOOR, IN SLAB OR BELOW GRADE.
 DISCONNECT SWITCH. PROVIDE DISCONNECT SWITCH AS INDICATED ON THE SCHEDULES. REFER TO PLANS AND SCHEDULES FOR ADDITIONAL REQUIREMENTS. FUSES SHALL BE DUAL ELEMENT TIME DELAY. VERIFY NAMEPLATE RATINGS OF FRAME SIZE AND FUSING OF THE ACTUAL EQUIPMENT TO BE INSTALLED.
 DRY-TYPE VENTILATED TRANSFORMER. SEE SPECIFICATIONS, PLANS AND RISER FOR REQUIREMENTS. TRANSFORMERS SHALL BE NEMA 1 UNLESS AT THE EXTERIOR OR IN AREAS WHERE WATER MAY BE PRESENT. MOUNT ON 4" HOUSE KEEPING PAD BOLTED TO PAD. MAINTAIN REQUIRED CLEARANCE FROM WALLS OR OBSTRUCTIONS FOR VENTILATION.
 GROUND TO METAL FRAME OF BUILDING, SLAB STEEL, OTHER MADE ELECTRODES, AND METAL UNDERGROUND WATER PIPE. PROVIDE A MINIMUM OF (3) 3/4" DIA. 10 FOOT LONG COPPER CLAD GROUND RODS LOCATED AT LEAST 6 FEET APART. ALL CONCEALED CONNECTIONS SHALL BE EXOTHERMICALLY WELDED. INTERIOR GROUND RODS SHALL STUB ABOVE FLOOR AT LOCATIONS NOT INTERFERING WITH FOOT TRAFFIC. LOCATE EXTERIOR GROUND ROD ASSEMBLY IN LANDSCAPE AREA OR PROVIDE WELL FOR ACCESS TO EACH GROUND ROD IF ASSEMBLY IS LOCATED IN HARD SURFACE AREAS, SUCH AS CONCRETE, ASPHALT, ETC. PROVIDE BOLTED PRESSURE CLAMP WITH AT LEAST TWO BOLTS ON RODS IN TEST WELLS. ALL GROUND ROD LOCATIONS SHALL BE ACCESSIBLE.
 VARIABLE FREQUENCY DRIVE. REFER TO SPECIFICATIONS, AND FLOOR PLANS FOR ADDITIONAL ELECTRICAL REQUIREMENTS. VFD SUPPLIED BY MECHANICAL CONTRACTOR (U.N.O.) AND INSTALLED BY ELECTRICAL CONTRACTOR. ALL CONNECTIONS TO VFD, DISCONNECT AND EQUIPMENT SERVED SHALL BE BY THE ELECTRICAL CONTRACTOR. CIRCUIT SHALL UTILIZE METAL CONDUIT TO MINIMIZE RFI NOISE.
 COMBINATION MOTOR STARTER WITH FUSED DISCONNECT OR CIRCUIT BREAKER DISCONNECT. REFER TO PLANS AND SCHEDULES FOR ADDITIONAL REQUIREMENTS. FUSES SHALL BE DUAL ELEMENT TIME DELAY. VERIFY NAMEPLATE RATINGS OF FRAME SIZE AND FUSING OF THE ACTUAL EQUIPMENT TO BE INSTALLED.
 PANEL HOMERUN/CIRCUIT
 PANEL DESIGNATION/CIRCUIT NUMBER
 NOTE: NOT ALL SYMBOLS SHOWN ON LEGEND ARE USED ON FLOOR PLANS.

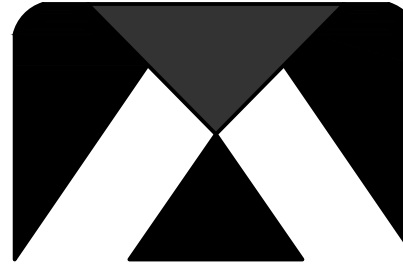
LIGHT FIXTURE SCHEDULE

TYPE	MANUFACTURER	CATALOG NUMBER	LAMPS		VOLTS	MOUNTING	COMMENTS
			QTY	WATTSTYPE			
A	LITHONIA	LDN6-30/30-LO6AR-LSS-120-E210		34.8W/LED	120V	CEILING	DIMMABLE 6" ROUND COMPACT LED DOWNLIGHT. HORIZONTAL LAMP CLEAR SEMI-SPECULAR OPEN REFLECTOR. COORDINATE FINAL SELECTION WITH GENERAL CONTRACTOR.
	APPROVED EQUAL FROM TAMPA BAY LIGHTING						
	APPROVED EQUAL FROM WESTERN FLORIDA LIGHTING						
B	ELK LIGHTING	73031-1	1	60W/A19	120V	CEILING HUNG	DIMMABLE 6" WIDE MINI PENDANT WITH ROUND CANOPY AND MULTICOLOR GRABBLE GLASS SHADE. COORDINATE FINAL SELECTION WITH GENERAL CONTRACTOR.
	APPROVED EQUAL FROM TAMPA BAY LIGHTING						
	APPROVED EQUAL FROM WESTERN FLORIDA LIGHTING						
C	VONN LIGHTING	9503885 VMC34911-TANIA		54W/LED	120V	CEILING HUNG	CIRCULAR LED CHANDELIER. COORDINATE FINAL SELECTION WITH GENERAL CONTRACTOR.
	APPROVED EQUAL FROM TAMPA BAY LIGHTING						
	APPROVED EQUAL FROM WESTERN FLORIDA LIGHTING						
D	LITHONIA	LTHSTBF BR30 LED 27K MW M4		12W/LED	120V	TRACK MOUNT	LED TRACK LIGHT. INCLUDES BR30 LED BULB. COORDINATE FINAL SELECTION WITH OWNER.
	APPROVED EQUAL FROM TAMPA BAY LIGHTING						
	APPROVED EQUAL FROM WESTERN FLORIDA LIGHTING						
EL	LITHONIA	ELM2L	2	1.8W/LED	120/277V	WALL OR CEILING	120V OR 277V AC. EMERGENCY UNIT PROVIDED WITH TEST SWITCH, STATUS INDICATOR AND REMOVABLE BATTERY. MAINTENANCE-FREE NICKEL-CADMIUM BATTERY PROVIDES 90 MINUTES OF EMERGENCY POWER.
	APPROVED EQUAL FROM TAMPA BAY LIGHTING						
	APPROVED EQUAL FROM WESTERN FLORIDA LIGHTING						
EX	LITHONIA	EXR LED EL M6		2W/LED	120/277V	CEILING OR WALL MOUNT	EXIT SIGN WITH RED LETTERS. WHITE THERMOPLASTIC HOUSING. MAINTENANCE-FREE NI-CAD BATTERY PROVIDES 90 MINUTES OF EMERGENCY POWER.
	APPROVED EQUAL FROM TAMPA BAY LIGHTING						
	APPROVED EQUAL FROM WESTERN FLORIDA LIGHTING						
EXL	LITHONIA	ECR LED HO M8	2	3.8W/LED	120/277V	CEILING	RED LETTERS. DUAL-VOLTAGE INPUT 120V OR 277V AC. 9.6V OUTPUT. NICKEL-CADMIUM BATTERY PROVIDES 90 MINUTES OF EMERGENCY POWER. HIGH OUTPUT (HO) OPTION POWERS UP TO 2 LED REMOTE LAMPS.
	APPROVED EQUAL FROM TAMPA BAY LIGHTING						
	APPROVED EQUAL FROM WESTERN FLORIDA LIGHTING						
F	LITHONIA	ZBLT4-40L-120-LP840		31.7W/LED	120V	CEILING	2'x4' LED TROFFER. COORDINATE FINAL SELECTION WITH GENERAL CONTRACTOR.
	APPROVED EQUAL FROM TAMPA BAY LIGHTING						
	APPROVED EQUAL FROM WESTERN FLORIDA LIGHTING						
G	LITHONIA	CPANL-1X4-44LM-40L-M4		39W/LED	120V	CEILING	1'x4' LED FLAT PANEL. COORDINATE FINAL SELECTION WITH GENERAL CONTRACTOR.
	APPROVED EQUAL FROM TAMPA BAY LIGHTING						
	APPROVED EQUAL FROM WESTERN FLORIDA LIGHTING						
H	LITHONIA	OLCS-8-DOB		8.9W/LED	120V	SURFACE MOUNTED	OUTDOOR LED CAST SCONCE. WET LOCATION CERTIFIED. COORDINATE FINAL SELECTION WITH GENERAL CONTRACTOR.
	APPROVED EQUAL FROM TAMPA BAY LIGHTING						
	APPROVED EQUAL FROM WESTERN FLORIDA LIGHTING						
J	LITHONIA	LDN8-35/60-LO6AR-LSS-120		73W/LED	120V	CEILING	8" LED OUTDOOR DOWNLIGHT. WET LOCATION CERTIFIED. COORDINATE FINAL SELECTION WITH GENERAL CONTRACTOR.
	APPROVED EQUAL FROM TAMPA BAY LIGHTING						
	APPROVED EQUAL FROM WESTERN FLORIDA LIGHTING						
K	HUBBELL	LMC2-18L-4K-1-8LS-8F-E		43W/LED	120V	WALL MOUNT @ 8" AFF	SMALL LED LITEPAK WITH BATTERY BACKUP. COORDINATE FINAL SELECTION WITH GENERAL CONTRACTOR.
	APPROVED EQUAL FROM TAMPA BAY LIGHTING						
	APPROVED EQUAL FROM WESTERN FLORIDA LIGHTING						
L	HATCO	DLH-400-RR	1	375W	120V	CANOPY HUNG	RADIANT HEAT LAMPS. COORDINATE FINAL SELECTION WITH GENERAL CONTRACTOR.
	APPROVED EQUAL FROM TAMPA BAY LIGHTING						
	APPROVED EQUAL FROM WESTERN FLORIDA LIGHTING						
N	ILLUMINA	BS100LED-4-HT-LO-WT35UNV	1	50W/LED	120V	WALL MOUNT	LED VANDAL RESISTANT STRIP LIGHT FOR ELEVATOR PIT.
	APPROVED EQUAL FROM TAMPA BAY LIGHTING						
	APPROVED EQUAL FROM WESTERN FLORIDA LIGHTING						
O	KUZZO LIGHTING	KUZ1983773	1	15W/LED	120V	WALL MOUNT	LED RECTANGULAR FIXTURE. COORDINATE FINAL SELECTION WITH GENERAL CONTRACTOR.
	APPROVED EQUAL FROM TAMPA BAY LIGHTING						
	APPROVED EQUAL FROM WESTERN FLORIDA LIGHTING						
P	LITHONIA	LD4N-30/10-LV4-6R-LD-MVOLT-E21	1	32W/LED	120V	CANOPY HUNG	RADIANT HEAT LAMPS. COORDINATE FINAL SELECTION WITH GENERAL CONTRACTOR.
	APPROVED EQUAL FROM TAMPA BAY LIGHTING						
	APPROVED EQUAL FROM WESTERN FLORIDA LIGHTING						
S	COOPER LIGHTING	GLEON-AF-02-LED-E1-5MQ		113W/LED	120V	POLE	SQUARE POLE MOUNTED LED AREA/SITE FIXTURE.
	APPROVED EQUAL FROM TAMPA BAY LIGHTING						
	APPROVED EQUAL FROM WESTERN FLORIDA LIGHTING						

- NOTES:
- SUBSTITUTIONS WILL NOT BE PERMITTED WITHOUT APPROVAL FROM THE ENGINEER, FOURTEEN DAYS PRIOR TO BID DATE.
 - VERIFY LIGHTING FIXTURE COLOR/FINISH WITH ARCHITECT PRIOR TO ORDERING.
 - ADJUST MOUNTING HEIGHTS/LOCATIONS TO SUIT FIELD CONDITIONS.
 - LAM



ARCHITECT



CAPSTONE
project services, plc

2211 Widman Way, Suite 220
Fort Myers, FL 3390
phone: 407-749-9033
website: capstonesps.net

office locations: roanoke, va - ft. myers, fl
FL cert. of auth.: AA26002199

CONSULTANTS

GS JOB #: 5623.20.00

GLOBAL
SANCHEZ INC.
MEPF ENGINEERING

INFO@GLOBAL-SANCHEZ.COM
CA#: 6237

816 MANATEE AVE. E, SUITE 1B
BRADENTON, FL 34208
PHONE: 941-758-2551

3825 HENDERSON BLVD.,
SUITE 103
TAMPA, FL 33629
PHONE: 813-281-0001

PROJECT INFO

CASSATA SQUARE
A NEW MIXED USE
PROJECT
DESIGNED FOR:
CS OF VENICE
DEVELOPMENT CO.
625 TAMIAMI TRAIL N.
VENICE, FL 34285

SHEET TITLE

ELECTRICAL
SITE PLAN

REVISIONS

MARK	DATE	DESCRIPTION
1	11/12/20	PERMIT COMMENTS
2		
3		
4	05/05/22	SITE LIGHTING

PROJECT NO: CPS2020-001.4

CAD DWG FILE:

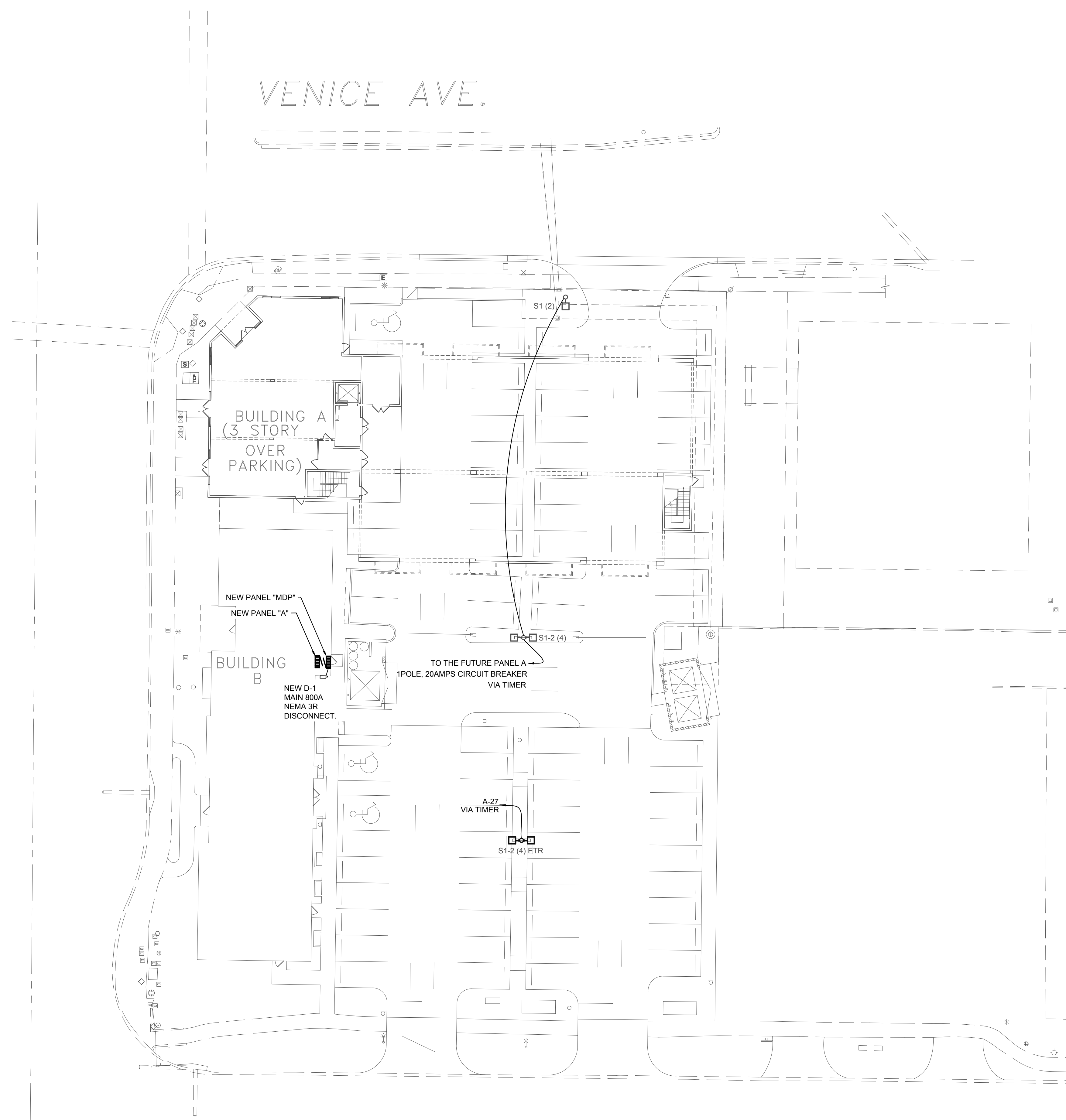
DRAWN BY: T.RYBALKO

CHK'D BY: P.FEIKEMA

DATE: 8/21/2020 - FOR CONSTRUCTION

SHEET NO.

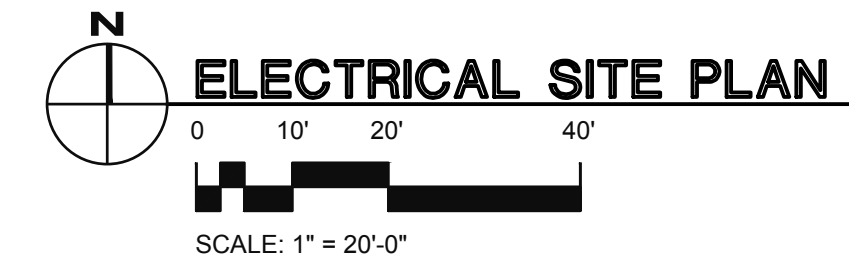
E1.1



VENICE AVE.

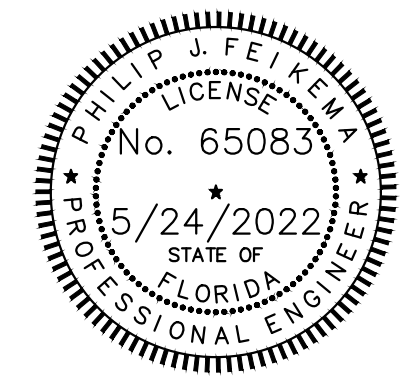
U.S. 41

MIAMI AVE.

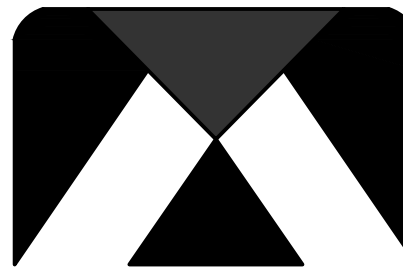


ELECTRICAL SITE PLAN

SHEET REVISED



ARCHITECT



CAPSTONE
project services, plc

2211 Widman Way, Suite 220
Fort Myers, FL 3390
phone: 407-749-9033
website: capstonesps.net

office locations: roanoke, va - ft. myers, fl
FL cert. of auth.: AA26002199

CONSULTANTS

05 JOB #: 5623.20.00

GLOBAL
SANCHEZ INC.
MEPF ENGINEERING

INFO@GLOBAL-SANCHEZ.COM
CA#: 6237

816 MANATEE AVE. E, SUITE 1B
BRADENTON, FL 34208
PHONE: 941-758-2551

3825 HENDERSON BLVD.,
SUITE 103
TAMPA, FL 33629
PHONE: 813-281-0001

PROJECT INFO

CASSATA SQUARE

**A NEW MIXED USE
PROJECT
DESIGNED FOR:
CS OF VENICE
DEVELOPMENT CO.
625 TAMiami TRAIL N.
VENICE, FL 34285**

SHEET TITLE

**ELECTRICAL
PHOTOMETRIC
SITE PLAN**

REVISIONS

MARK	DATE	DESCRIPTION
1		
2		
3		
4	05/05/22	SITE LIGHTING

PROJECT NO: CPS2020-001.4

CAD DWG FILE:

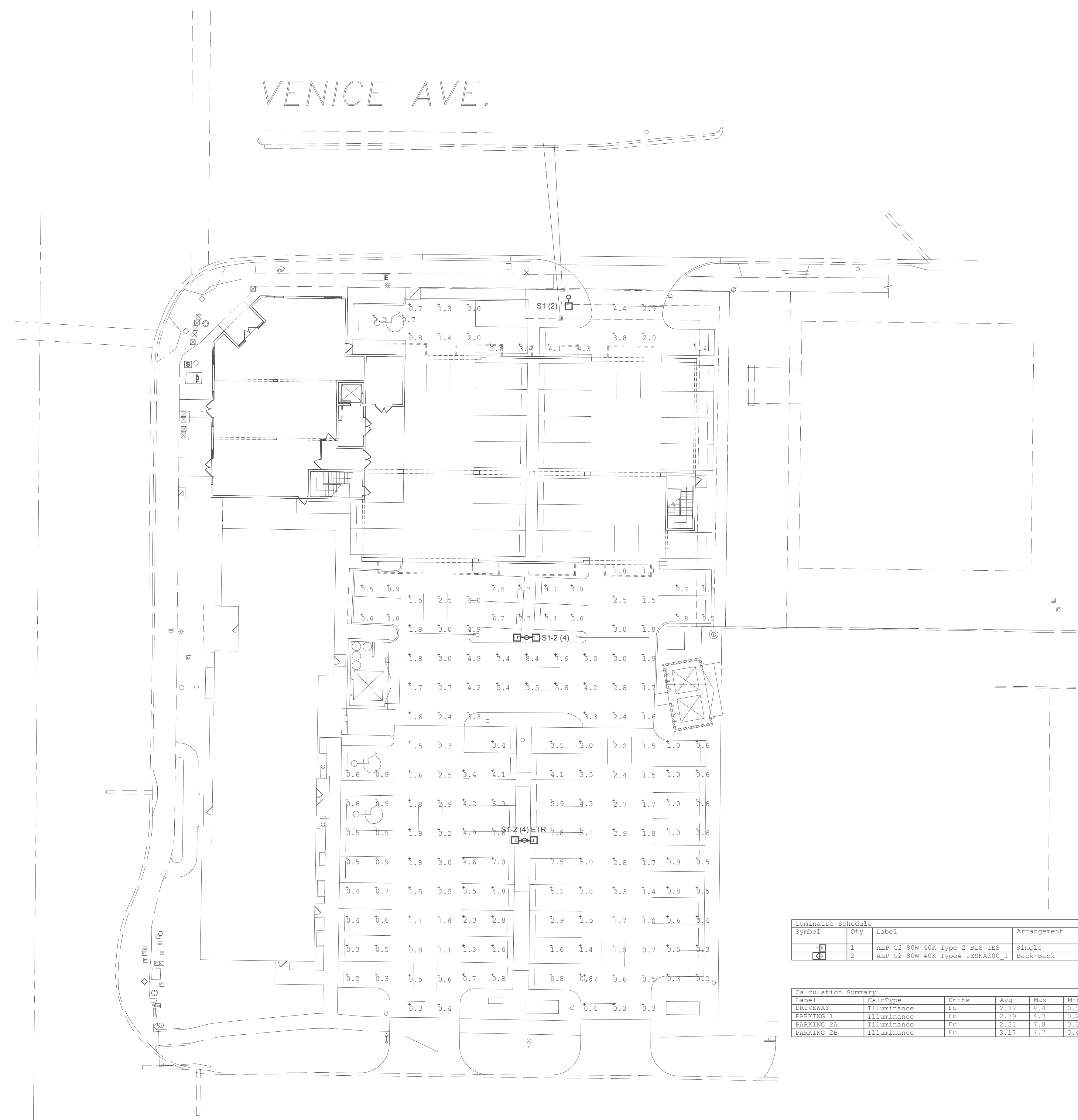
DRAWN BY: T.RYBALKO:

CHK'D BY: P.FEIKEMA:

DATE: 8/21/2020 - FOR CONSTRUCTION

SHEET NO.

E1.2



VENICE AVE.

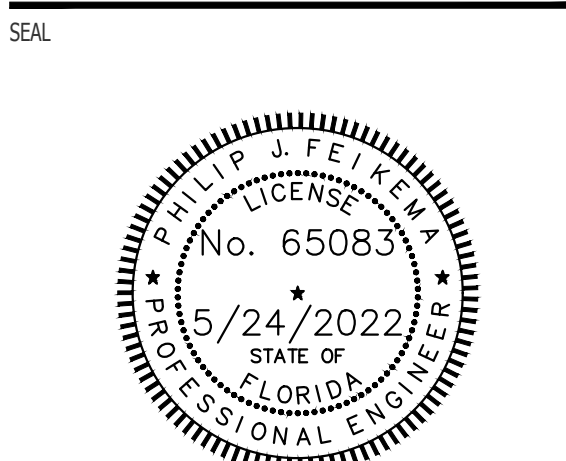
U.S. 41

MIAMI AVE.

SHEET ADDED

Symbol	Qty	Label	Arrangement	Tag	LI-F	Luminaire Lumens	Luminaire Watts	Total Watts	Mounting Height
1	1	ALP 02 80W 40K Type J BLS 180	Single	S1 (2) BLS	1.000	13302	40.275	40.275	45
2	2	ALP 02 80W 40K Type J BLSNAZ01	Back-Back	S1-2 (4)	1.000	13364	40.360	80.720	25

Label	CalcType	Units	Avg	Max	Min	Avg/Min	Max/Min
DRIVENWAY	Illuminance	Fc	2.37	8.4	0.3	7.80	28.00
PARKING 1	Illuminance	Fc	2.39	4.3	0.2	11.95	21.50
PARKING 2A	Illuminance	Fc	2.24	7.8	0.2	11.05	39.00
PARKING 2B	Illuminance	Fc	3.17	7.7	0.4	7.93	19.25



ESTIMATED VOLTAGE DROP (MDP) COPPER SERVICE FEEDER CONDUCTORS	
CONDUCTOR SIZE	600 KCMIL CU
RESISTANCE (D/1000')	0.028
NUMBER OF PARALLEL RUNS	2
CONDUCTOR LENGTH	100'
APPROXIMATE LOAD	800 A
PHASE	3 PH
ESTIMATED VOLTAGE DROP	1.94 V
VOLTAGE	208 V
VOLTAGE DROP	0.93 %
VOLTAGE DROP BELOW 3% PER NEC 215.2 AND FBC-E, 6TH ED. C405.6.3	

PANELBOARD 'MDP' (COPPER) ESTIMATED FAULT CURRENT	
CONDUCTOR SIZE	600 KCMIL CU
CONDUCTOR LENGTH	100'
CONDUCTOR "C"	28.033
NUMBER OF PARALLEL RUNS	2
TOTAL CONDUCTOR "C"	56.066
ESTIMATED TRANSFORMER SCA	65,000 A
VOLTAGE	208 V
FAULT CURRENT	33,072 A
FAULT CURRENT	SCA(1+((1.73*L*SCA)/(C*V)))

33.072A SHORT CIRCUIT AMPS ESTIMATED AT PANEL
NOTE: FAULT CURRENT CALCULATION IS BASED ON ESTIMATED UTILITY TRANSFORMER AVAILABLE FAULT CURRENT AND LOCATIONS OF EQUIPMENT SHOWN ON THE PLANS. ELECTRICAL CONTRACTOR SHALL CONFIRM ABOVE INFORMATION IS CORRECT PRIOR TO ORDERING EQUIPMENT. ELECTRICAL CONTRACTOR SHALL PROVIDE EQUIPMENT WITH SUITABLE INTERRUPT RATINGS. ANY DISCREPANCIES SHALL BE REPORTED TO THE ENGINEER.

ETR PANELBOARD 'MDP' ELECTRICAL SERVICE CALCULATION	
LOAD	CONNECTED DEMAND
ETR PANEL 'A'	10,043 11,469
ETR PANEL 'K'	80,304 60,982
RECEPTACLES	360 360
RTU-1	9,727 9,727
RTU-2	29,181 29,181
AHU-1 (HEAT MODE)	1,872 1,872
QAF-1	138 138
KEF-1	2,988 2,988
MUA-1	7,701 7,701
HOOD	1,800 1,800
MUA-1 COND. 1	10,794 10,794
MUA-1 COND. 2	10,794 10,794
CU-1	6,656
KEF-2	5,400 5,400
DOAS	53,976 53,976
SUMP PUMP	1,020 1,020
TOTAL	261,935 237,383
659 AMP DEMAND	
800A SERVICE @ 208V, 3-PHASE EXISTING	

PANELBOARD DESIGNATION 'MDP'			
VOLTAGE: 208/120V	3Ø-4W	MAINS RATING: 800 AMPS	MAIN CB TRIP RATING: 800 AMPS
<input type="checkbox"/> SURFACE <input type="checkbox"/> MCB	COPPER BUS		INTERRUPTING RATING: 42000 AIC
<input type="checkbox"/> FLUSH <input type="checkbox"/> MLO	ENCLOSURE: NEMA 1		
SERVES	CB SIZE	LOAD VA	CBTRIP
RTU-1	90	9727 1 2 9727	RTU-2
SERVICE RECEPT.	20	180 7 8 180 20	SERVICE RECEPT.
AHU-1	15	936 9 10 3328	CU-1
QAF-1	25	138 13 14 39 20	SPACE
KEF-1 (TO VFD)	15	996 15 16 1800	KEF-2 (TO VFD)
MUA-1 (TO VFD)	45	996 19 20 1800	DOAS
HOOD CONTROL	15	2967 21 22 17992	ELEVATOR
MUA-1 COND 1	30	2567 23 24 17992	SHUNT TRIP
MUA-1 COND 2	30	2567 25 26 17992	SUMP PUMP
SPARE	20	3598 29 30 3240	SPACE
PANEL 'A'	100	3598 31 32 3240	SPACE
PANEL 'K'	350	3598 33 34 1020	SPACE
SPARE	20	3598 35 36 0	SPACE
SPARE	20	3598 37 38 0	SPACE
SPARE	20	3598 39 40 0	SPACE
SPARE	20	0 41 42 0 0	SPACE
SPARE	20	3219 43 44 0 0	SPACE
SPARE	20	3219 45 46 0 0	SPACE
SPARE	20	3219 47 48 0 0	SPACE
SPARE	20	27844 49 50 0 0	SPACE
SPARE	20	27844 51 52 0 0	SPACE
SPARE	20	27844 53 54 0 0	SPACE
SPARE	20	0 55 56 0	SPACE
SPARE	20	0 57 58 0	SPACE
SPARE	20	0 59 60 0	SPACE

* COORDINATE INSTALLATION REQUIREMENTS WITH EQUIPMENT PROVIDER.
L. PROVIDE LOCKABLE OFF PROVISION PER NEC 422.31.

ESTIMATED VOLTAGE DROP ('A') COPPER SERVICE FEEDER CONDUCTORS	
CONDUCTOR SIZE	3/0 AWG, CU
RESISTANCE (D/1000')	0.082
NUMBER OF PARALLEL RUNS	1
CONDUCTOR LENGTH	20'
APPROXIMATE LOAD	200 A
PHASE	3 PH
ESTIMATED VOLTAGE DROP	0.57 V
VOLTAGE	208 V
VOLTAGE DROP	0.27 %
VOLTAGE DROP BELOW 3% PER NEC 215.2 AND FBC-E, 6TH ED. C405.6.3	

PANELBOARD 'A' (COPPER) ESTIMATED FAULT CURRENT	
CONDUCTOR SIZE	3/0 AWG, CU
CONDUCTOR LENGTH	20'
CONDUCTOR "C"	13.923
NUMBER OF PARALLEL RUNS	1
TOTAL CONDUCTOR "C"	13.923
ESTIMATED TRANSFORMER SCA	33,072 A
VOLTAGE	208 V
FAULT CURRENT	23,697 A
FAULT CURRENT	SCA(1+((1.73*L*SCA)/(C*V)))

23.697A SHORT CIRCUIT AMPS ESTIMATED AT PANEL
NOTE: FAULT CURRENT CALCULATION IS BASED ON ESTIMATED UTILITY TRANSFORMER AVAILABLE FAULT CURRENT AND LOCATIONS OF EQUIPMENT SHOWN ON THE PLANS. ELECTRICAL CONTRACTOR SHALL CONFIRM ABOVE INFORMATION IS CORRECT PRIOR TO ORDERING EQUIPMENT. ELECTRICAL CONTRACTOR SHALL PROVIDE EQUIPMENT WITH SUITABLE INTERRUPT RATINGS. ANY DISCREPANCIES SHALL BE REPORTED TO THE ENGINEER.

PANELBOARD DESIGNATION 'A'			
VOLTAGE: 208/120V	3Ø-4W	MAINS RATING: 200 AMPS	MAIN CB TRIP RATING: 200 AMPS
<input type="checkbox"/> SURFACE <input type="checkbox"/> MCB	COPPER BUS		INTERRUPTING RATING: 35000 AIC
<input type="checkbox"/> FLUSH <input type="checkbox"/> MLO	ENCLOSURE: NEMA 1		
SERVES	CB SIZE	LOAD VA	CBTRIP
ENTRY LTG.	20	245 1 2 39 20	ELECT. LTG.
DINING LTG.	20	1200 3 4 836 20	DINING LTG.
BACK DINING LTG.	20	329 5 6 316 20	BAR LTG.
RR VESTIBULE LTG.	20	139 7 8 826 20	UPPER DINING LTG.
MEN'S RR LTG.	20	326 9 10 361 20	WOMEN'S RR LTG.
ROOF ACCESS LTG.	20	95 11 12 426 20	EXTERIOR LTG.
SPARE	20	0 13 14 0 0	SPACE
SPARE	20	0 15 16 0 0	SPACE
BACK SERVICE RECEPT.	20	180 19 20 1080 20	1ST FLOOR RECEPT.
2ND FLOOR RECEPT.	20	900 21 22 720 20	EXTERIOR RECEPT.
RECEPTACLE	20	180 23 24 0 0	SPACE
RECEPTACLE	20	540 25 26 0 0	SPACE
OUTSIDE LIGHTING	20	160 27 28 0 0	SPACE
SPACE	0	0 29 30 0 0	SPACE
SPACE	0	0 31 32 0 0	SPACE
SPACE	0	0 33 34 0 0	SPACE
SPACE	0	0 35 36 0 0	SPACE
SPACE	0	0 37 38 0 0	SPACE
SPACE	0	0 39 40 0 0	SPACE
SPACE	0	0 41 42 0 0	SPACE

PANELBOARD 'A' ELECTRICAL SERVICE CALCULATION	
LOAD	CONNECTED DEMAND
LIGHTING	5,318 6,648
RECEPTACLES	3,600 3,600
EWG (2)	740 740
TOTAL	9,658 10,988
30 AMP DEMAND	
200A SERVICE @ 208V, 3-PHASE EXISTING	

G PROVIDE WITH GROUND FAULT PROTECTION

ESTIMATED VOLTAGE DROP ('K') COPPER SERVICE FEEDER CONDUCTORS	
CONDUCTOR SIZE	3/0 AWG, CU
RESISTANCE (D/1000')	0.082
NUMBER OF PARALLEL RUNS	1
CONDUCTOR LENGTH	10'
APPROXIMATE LOAD	200 A
PHASE	3 PH
ESTIMATED VOLTAGE DROP	0.28 V
VOLTAGE	208 V
VOLTAGE DROP	0.14 %
VOLTAGE DROP BELOW 3% PER NEC 215.2 AND FBC-E, 6TH ED. C405.6.3	

PANELBOARD 'K' (COPPER) ESTIMATED FAULT CURRENT	
CONDUCTOR SIZE	3/0 AWG, CU
CONDUCTOR LENGTH	10'
CONDUCTOR "C"	13.923
NUMBER OF PARALLEL RUNS	1
TOTAL CONDUCTOR "C"	13.923
ESTIMATED TRANSFORMER SCA	33,072 A
VOLTAGE	208 V
FAULT CURRENT	27,611 A
FAULT CURRENT	SCA(1+((1.73*L*SCA)/(C*V)))

27.611A SHORT CIRCUIT AMPS ESTIMATED AT PANEL
NOTE: FAULT CURRENT CALCULATION IS BASED ON ESTIMATED UTILITY TRANSFORMER AVAILABLE FAULT CURRENT AND LOCATIONS OF EQUIPMENT SHOWN ON THE PLANS. ELECTRICAL CONTRACTOR SHALL CONFIRM ABOVE INFORMATION IS CORRECT PRIOR TO ORDERING EQUIPMENT. ELECTRICAL CONTRACTOR SHALL PROVIDE EQUIPMENT WITH SUITABLE INTERRUPT RATINGS. ANY DISCREPANCIES SHALL BE REPORTED TO THE ENGINEER.

PANELBOARD 'K' ELECTRICAL SERVICE CALCULATION	
LOAD	CONNECTED DEMAND
EQP-1-OVEN	6,010 3,907
EQP-2-STEAM TABLE	3,000 1,950
EQP-3-KETTLE(2)	800 520
EQP-4-KETTLES	242 157
EQP-5-EQUIP. STAND	552 359
EQP-6-CONV. OVEN	690 449
EQP-14-CARV. STATION	756 491
EQP-18-WARMER	1,350 878
EQP-19-WH(2)	350 228
EQP-20-REF	910 592
EQP-21-GRINDER	900 585
EQP-23-BENCH MIXER	1,200 780
EQP-24-ICE CUBE MACHINE	3,724 2,421
EQP-23-DELI SLICER	240 156
EQP-30-DW	2,622 1,704
EQP-36-TEA BREWER(2)	3,360 2,184
EQP-37-COFFEE MACHINE	1,668 1,084
EQP-38-SODA MACHINE(2)	4,600 4,600
EQP-39-MEGA UNIT	656 426
EQP-40-REF	311 202
EQP-43-POS(3)	3,000 3,000
EQP-45-GLASS FROSTER	380 247
EQP-47-BEER DISPENSER	541 352
EQP-48-UC REF.	368 239
EQP-54-HEAT LAMP	504 328
EQP-55-PREP TABLE	610 397
BUTR-CU-1	5,188 3,372
BUTR-EVP-1	1,872 1,872
BUTR-WID	350 350
FRZ-CU-1	3,120 2,028
FRZ-EVP-1	1,725 1,125
COLR-CU-1	7,280 4,752
COLR-EVP-1	3,120 3,120
HEAT LAMPS	2,250 1,463
LIGHTING	275 344
RECEPTACLES	3,960 3,960
POINT OF SALE(6)	6,000 6,000
BAR GUN DISPENSER(3)	3,900 2,535
BAG IN BOX	1,920 1,248
TOTAL	80,304 60,982
169 AMP DEMAND	
200A SERVICE @ 208V, 3-PHASE EXISTING	

** DEMAND FACTOR 0.65 PER NEC 250.56

PANELBOARD DESIGNATION 'K'			
VOLTAGE: 208/120V	3Ø-4W	MAINS RATING: 200 AMPS	MAIN CB TRIP RATING: 200 AMPS
<input type="checkbox"/> SURFACE <input type="checkbox"/> MCB	COPPER BUS		INTERRUPTING RATING: 35000 AIC
<input type="checkbox"/> FLUSH <input type="checkbox"/> MLO	ENCLOSURE: NEMA 1		
SERVES	CB SIZE	LOAD VA	CBTRIP
EQP-1-OVEN	40	3005 1 2 1500 20	EQP-2-STEAM TABLE
EQP-4-KETTLES	20	3005 3 4 1500 20	BAG IN BOX
EQP-6-PREP TABLE	20	897 7 8 242 20	EQP-7-UC FREEZER
EQP-9-EQUIP. STAND	20	552 9 10 20	SPACE
SHUNT	11	12 1680 20	EQP-36-TEA BREWER
EQP-14-CARV STATION	20	756 13 14 1350 20	EQP-18-WARMER
SHUNT	15	15 16 20	SPACE
EQP-19-WH	20	175 17 18 175 20	EQP-19-WH
EQP-20-REF.	20	910 19 20 900 20	EQP-21-GRINDER
EQP-23-BENCH MIXER	20	1200 21 22 1862 30	EQP-24-ICE CUBE MACHINE
EQP-25-HEATING CAB	30	2004 23 24 1862 30	EQP-30-DW
EQP-26-DELI SLICER	20	240 25 26 2622 20	EQP-37-COFFEE MACH.
EQP-36-TEA BREWER	20	1680 27 28 1668 20	EQP-39-MEGA UNIT
EQP-38-SODA MACH.	30	2300 29 30 656 20	EQP-43-POS
EQP-40-REF.	20	311 31 32 1000 20	EQP-43-POS
EQP-43-POS	20	1000 33 34 1000 20	EQP-47-BEER DISPEN.
EQP-45-GLASS FROST.	20	380 35 36 541 20	SPACE
EQP-38-SODA MACH.	30	2300 37 38 20	EQP-54-HEAT LAMP
EQP-48-UC REF.	20	368 39 40 504 20	SPACE
EQP-55-PREP TABLE	20	610 41 42 1729 20	SPACE
BUTR-EVP-1	20	936 43 44 1729 20	BUTR-CU-1
BUTR-WID	20	350 47 48 1729 20	FRZ-EVP-1
FRZ-CU-1	20	1560 49 50 3640 50	COLR-CU-1
COLR-EVP-1	20	1560 51 52 3640 20	HEAT LAMPS
KITCHEN LIGHTS	20	370 57 58 158 20	OFFICE/RR LIGHTING
OFFICE/RR RECP.	20	720 59 60 1000 20	POS
POS	20	1000 61 62 1000 20	POS
POS	20	1000 63 64 1000 20	PIT LIGHTS/RECEPT.
RECEPTACLES BAR	20	540 67 68 360 20	RECEPTACLES
RECEPTACLES BAR	20	540 69 70 360 20	RECEPTACLES
RECEPTACLES BAR	20	360 71 72 540 20	RECEPTACLES
EQP-12 CONV. OVEN	20	690 73 74 1300 20	BAR GUN DISPENSER
RECEPTACLE ROOF	20	540 75 76 0 0	SPACE
BAR GUN DISPENSER	20	1300 77 78 0 0	SPACE
BAR GUN DISPENSER	20	1300 79 80 0 0	SPACE
SPARE	20	0 81 82 0 0	SPACE
SPARE	20	0 83 84 0 0	SPACE

* COORDINATE INSTALLATION REQUIREMENTS WITH EQUIPMENT PROVIDER.
G PROVIDE WITH GROUND FAULT PROTECTION

ELECTRICAL SCHEDULES

SCALE: NOT TO SCALE

PROJECT INFO

CASSATA SQUARE
A NEW MIXED USE PROJECT
DESIGNED FOR:
CS OF VENICE DEVELOPMENT CO.
625 TAMiami TRAIL N.
VENICE, FL 34285

SHEET TITLE

ELECTRICAL SCHEDULES

MARK	DATE	DESCRIPTION
1	11/12/20	PERMIT COMMENTS
2		
3		
4	05/05/22	SITE LIGHTING

PROJECT NO: CPS2020-001.4
CAD DWG FILE:
DRAWN BY: T.RYBALKO
CHK'D BY: P.FEIKEMA
DATE: 8/21/2020 - FOR CONSTRUCTION
SHEET NO.

E7.1