

**LANDSCAPING REQUIREMENTS**

**NORTH LANDSCAPE BUFFER**  
(172.42' FRONTAGE - 54' DRIVEWAYS = 118.42' FRONTAGE)  
(5' WIDE BUFFER PROVIDED)

1 TREE REQUIRED EVERY 40 LF  
118.42 / 40 = 2.96

TREES REQ'D = 2  
TREES PROP = 2

**SOUTH LANDSCAPE BUFFER**  
(172.42' FRONTAGE - 5' SIDEWALK = 167.42' FRONTAGE)  
(15' WIDE BUFFER PROVIDED)

1 TREE REQUIRED EVERY 20 LF  
167.42 / 20 = 8.38

TREES REQ'D = 8  
TREES PROP = 8

MEANDERING DOUBLE HEDGE  
SHRUBS PROP = 106

**NATIVE VARIETY:**

TREES - REQUIRED: 75% NATIVE MIN.  
PROVIDED: 100% NATIVE

SHRUBS - REQUIRED: 50% NATIVE MIN.  
PROVIDED: 100% NATIVE

**TREE MITIGATION/REPLACEMENT**  
(PROJECT AREA x 40 INCHES)  
95(40) = 38

TREE INCHES REQ'D = 38  
TREE INCHES PROP = 120

**EAST LANDSCAPE BUFFER**  
(240.38' FRONTAGE - )  
(15' WIDE BUFFER PROVIDED)

1 TREE REQUIRED EVERY 20 LF  
240.38 / 20 = 12.01

TREES REQ'D = 12  
TREES PROP = 12

33 SHRUBS REQUIRED EVERY 100 LF  
240.38 / 100 = 2.40  
(2.40)33 = 79.32

SHRUBS REQ'D = 79  
SHRUBS PROP = 79

**WEST LANDSCAPE BUFFER**  
(240.38' FRONTAGE)  
(15' WIDE BUFFER PROVIDED)

1 TREE REQUIRED EVERY 20 LF  
240.38 / 20 = 12.01

TREES REQ'D = 12  
TREES PROP = 12

33 SHRUBS REQUIRED EVERY 100 LF  
240.38 / 100 = 2.40  
(2.40)33 = 79.32

SHRUBS REQ'D = 79  
SHRUBS PROP = 79

**INTERIOR LANDSCAPING**  
(10% OF PARKING LOT AREA)  
17,445 SF / 10 = 1,744.5 SF

LANDSCAPE AREA REQ'D = 1,744 SF  
LANDSCAPE AREA PROP = 2,860 SF

1 TREE REQ'D PER INTERIOR ISLAND  
(5 INTERIOR ISLANDS)

TREES REQ'D = 5  
TREES PROP = 5

1 TREE REQ'D PER 20 PARKING SPACES  
(28 PARKING SPACES)

TREES REQ'D = 1  
TREES PROP = 1

**PROPOSED PLANT LIST**

NATIVE	SYMBOL	QTY	SPECIES	SIZE, SPEC. & SPREAD
Y		321	COCOPLUM (#3 SHRUBS) - 'CP' <i>Chrysobalanus icaco</i>	3 GAL @ 30" OC 24" HEIGHT MIN
Y		53	Pitch Apple (#3 SHRUBS) - 'PA' <i>Clusia Rosea</i>	3 GAL @ 30" OC 24" HEIGHT MIN
Y		17	SOUTHERN MAGNOLIA - 'M' <i>Magnolia Grandiflora</i>	3" CAL MIN @ 6" 10' HEIGHT MIN 4' MIN SPREAD
Y		17	SWEET BAY MAGNOLIA 'SM' <i>Magnolia Virginiana</i>	3" CAL MIN @ 6" 10' HEIGHT MIN 4' MIN SPREAD
Y		6	DAHOON HOLLY TREE - 'DH' <i>Ilex cassine</i>	3" CAL MIN @ 6" 10' HEIGHT MIN 4' MIN. SPREAD

**TREE REMOVAL LIST**

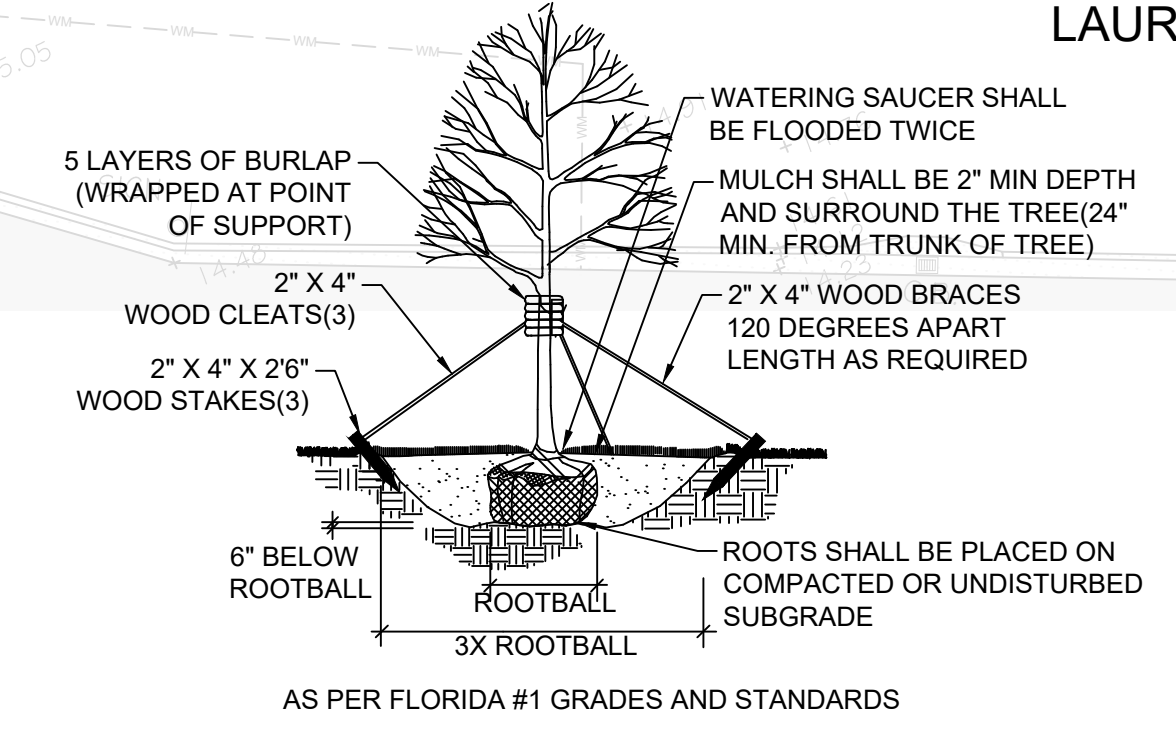
SYMBOL	QTY	SPECIES	SIZE, SPEC. & SPREAD
	3	PALM TREE	1" DIAMETER 15 - 18" HEIGHT 10' SPREAD

**LANDSCAPE NOTES:**

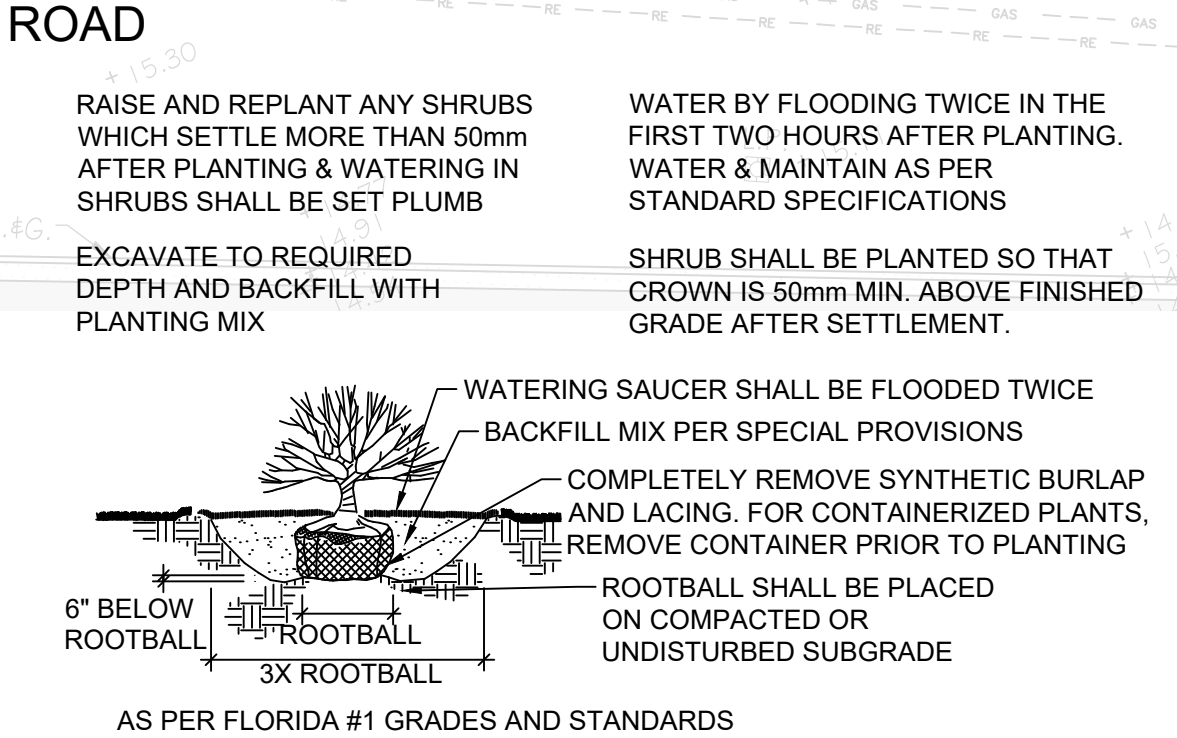
- THE CONTRACTOR SHALL SOD ALL DISTURBED AREA. ALL PLANTING SHALL BE MULCHED TO A 3" MINIMUM DEPTH.
- ACCEPTABLE ROOT BARRIER (BIO BARRIER) MATERIAL TO BE INSTALLED WHEN A CANOPY TREE IS PLANTED WITHIN 7 FEET FROM ANY ROADWAY, SIDEWALK OR PUBLIC UTILITY.
- VERIFY THE LOCATIONS OF EXISTING TREES, LAWNS, AND SHRUBS; REMOVE EXTRANEOUS MATERIALS SUCH AS ROCKS, BRANCHES, BUILDING MATERIALS OR UNACCEPTABLE SOIL PRIOR TO PLANTING SOD, TREES, AND SHRUBS.
- CONTRACTOR SHALL BECOME ACQUAINTED WITH THE RELATED PAVING, SITE GRADING, AND ALL UTILITIES TO PRECLUDE ANY MISUNDERSTANDINGS AND ENSURE A TROUBLE FREE INSTALLATION.
- THE CONTRACTOR SHALL BE RESPONSIBLE FOR THE CLEAN UP OF PREMISES AND REMOVAL OF ALL DISCARDED AND SURPLUS MATERIALS, AND RUBBISH.
- THE EXACT LOCATION OF ALL EXISTING STRUCTURES, UNDERGROUND UTILITIES, AND PIPES MAY NOT BE AS INDICATED ON DRAWINGS; THE CONTRACTOR SHALL DETERMINE THE LOCATION OF THESE ITEMS AND SHALL CONDUCT HIS WORK IN A MANNER TO PREVENT INTERRUPTION OR DAMAGE TO EXISTING SYSTEMS WHICH MUST REMAIN OPERATIONAL. THE CONTRACTOR SHALL PROTECT EXISTING STRUCTURES AND UTILITY SERVICE WHICH MUST REMAIN OPERATIONAL AND SHALL BE RESPONSIBLE FOR THEIR REPLACEMENT IF DAMAGED.
- AREAS NOT LANDSCAPED WILL BE SODDED.
- REFER TO DEMOLITION PLAN (SHEET 3 OF 11) FOR ANY TREES TO BE REMOVED.
- ALL PLANTS, TREES & SHRUBS SHALL BE FLORIDA NO.1 OR BETTER AS DESCRIBED IN "GRADES AND STANDARDS FOR NURSERY PLANTS" 1975, FLORIDA DEPARTMENT OF AGRICULTURE AND CONSUMER SERVICES.
- THERE SHALL BE 3' MINIMUM CLEARANCE FROM LANDSCAPE PLANTS TO THE EDGE OF THE METERS.
- TO AVOID CONFLICTS WITH OVERHEAD UTILITY LINES, ONLY TREES LESS THAN 20 FEET IN HEIGHT AT MATURITY MAY BE USED DIRECTLY ADJACENT TO AN OVERHEAD LINE.
- ALL PARKING LOT AREAS RECEIVING TREES SHALL HAVE UNCOMPACTED COARSE LOAM THAT IS A MINIMUM OF THIRTY-SIX INCHES DEEP.
- MULCH MATERIAL SHALL CONSIST OF SHREDDED SOFTWOOD OR HARDWOOD CHIPS, OAK LEAVES, BRICK CHIPS, AND OTHER ALTERNATE MATERIALS AS APPROVED BY THE CITY ON A CASE BY CASE BASIS. NON-POROUS MATERIALS SHALL NOT BE USED AS MULCH.
- MULCH SHALL BE PLACED TO A MINIMUM DEPTH OF TWO INCHES AND A MAXIMUM DEPTH OF FOUR INCHES.
- EACH TREE MUST HAVE A RING OF MULCH NO LESS THAN TWENTY-FOUR INCHES BEYOND ITS TRUNK, AND NO GREATER THAN ITS DRIPLINE, IN ALL DIRECTIONS.
- PLANTINGS SHALL BE SETBACK MINIMUM TWO FEET FROM BACK OF CURB AT PARKING ISLANDS.
- TREE PLANTINGS WITHIN THE EAST AND WEST BUFFER SHALL SPACED BE 18.5' ON CENTER.

**IRRIGATION NOTES:**

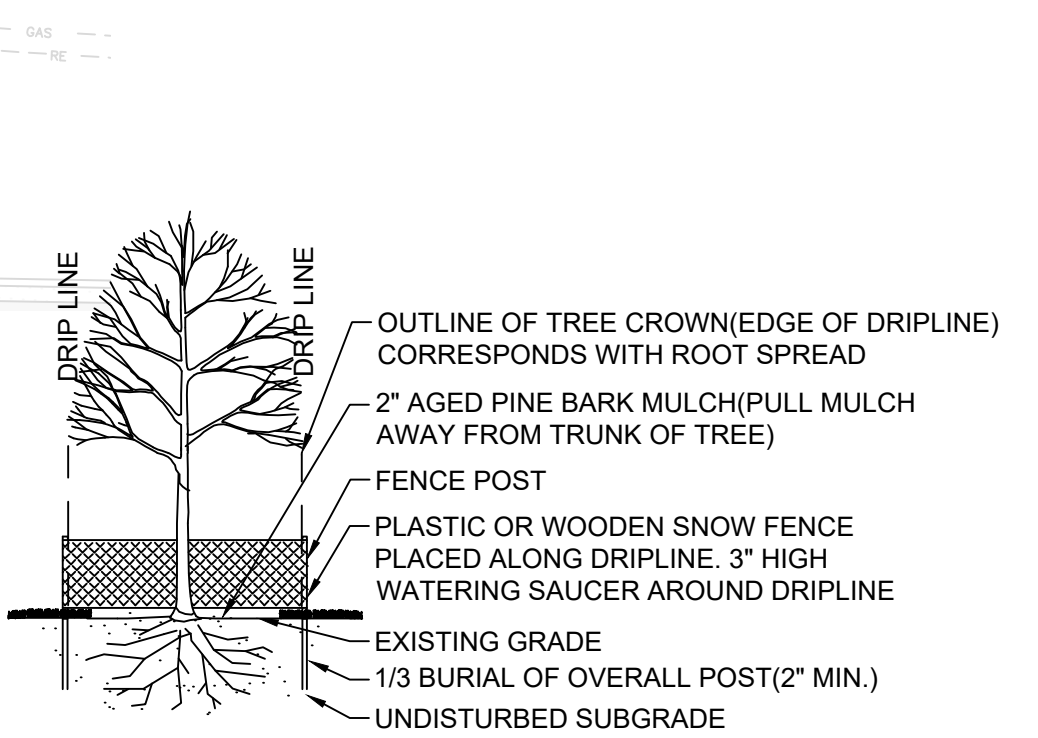
- THE LANDSCAPE AREAS OF THE ENTIRE PROJECT SHALL BE IRRIGATED WITH AN AUTOMATIC IRRIGATION SYSTEM WITH A CONTROLLER SET TO CONSERVE WATER.
- A MOISTURE DETECTION DEVICE SHALL BE INSTALLED TO OVERRIDE THE SPRINKLER ACTIVATION MECHANISM DURING PERIODS OF INCREASED RAINFALL.
- THE RAIN SENSOR SHALL BE POSITIONED SO THAT IT WILL RECEIVE DIRECT RAINFALL AND NOT BE IMPEDED BY ANY OTHER OBJECTS.
- ALL REQUIRED IRRIGATION SYSTEMS SHALL BE LAID OUT SO THAT WATER IS NOT APPLIED TO IMPERVIOUS SURFACES, INCLUDING ROADS, DRIVEWAYS AND OTHER IMPERVIOUS SURFACES.
- REQUIRED IRRIGATION SHALL NOT IMPACT EXISTING NATIVE VEGETATION THAT WILL BE RETAINED ON THE DEVELOPMENT SITE.
- "RAINBIRD" IRRIGATION SUPPLIES OR EQUAL SHALL BE UTILIZED.
- ALL LANDSCAPE AREAS, INCLUDING PARKING ISLANDS WILL BE ADEQUATELY SLEEVED FOR IRRIGATION.
- THE 40' LANDSCAPE BUFFER AREA ALONG LAUREL ROAD WILL REQUIRE A SEPARATE IRRIGATION ZONE THAT SHALL BE MAINTAINED BY THE ASSOCIATION. THIS EQUIPMENT NEEDS TO BE LOCATED ON THE EXTERIOR OF THE BUILDING.



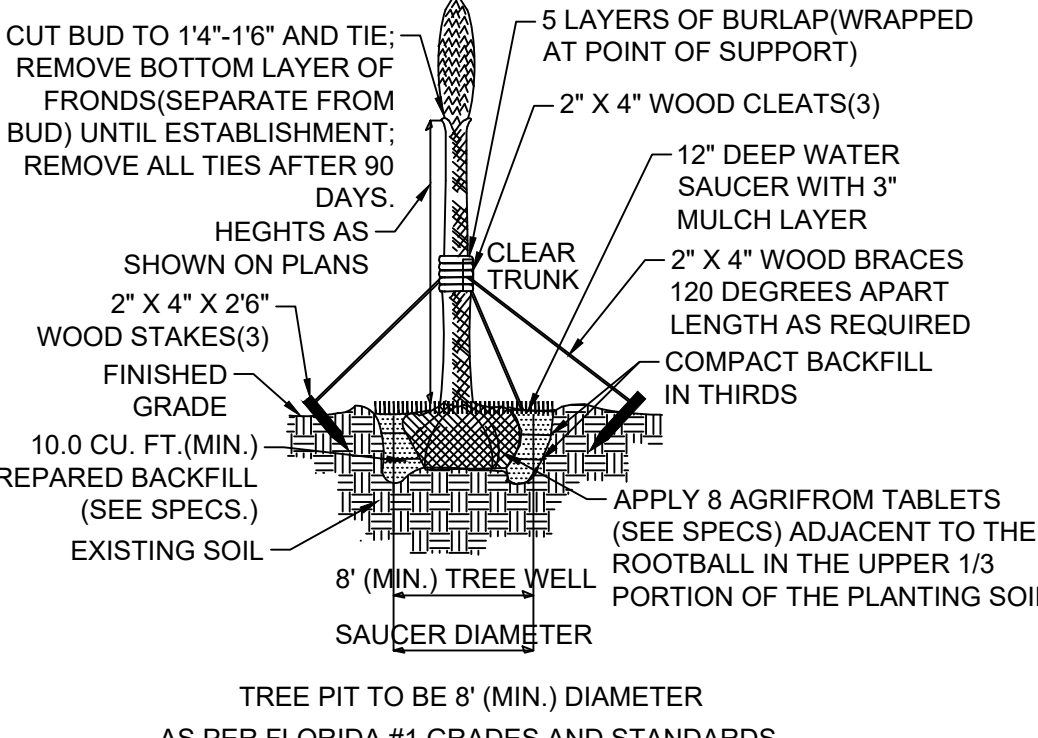
1 DECIDUOUS TREE PLANTING



2 SHRUB PLANTING



3 TREE PROTECTION



4 PALM PLANTING AND STAKING

**CALL 48 HOURS BEFORE YOU DIG**

**IT'S THE LAW! DIAL 811** Know what's below. Call before you dig.

SUNSHINE STATE ONE CALL OF FLORIDA, INC.

**NOTES:**

ALL EXISTING (SURVEY) & ALL PROPOSED GRADE ELEVATIONS & CONTOURS SHOWN REFER TO N.A.V.D. '88.

THESE PLANS MAY HAVE BEEN REDUCED OR INCREASED IN SIZE BY REPRODUCTION(S). THIS MUST BE CONSIDERED WHEN OBTAINING SCALED DATA.

PROJECT: 21-160  
DATE: 06/22

ANDREA DOUGLAS, L.A.  
LICENSE # 6607057  
23150 FASHION DR., SUITE 230, ESTERO FL 33928  
ANDRES@BORALENGINEERING.COM  
(P) 239-492-6509

**BORALE**  
ENGINEERING  
WWW.BORALENGINEERING.COM

OWNER:  
R.A. JOHNSON, INC.  
LAUREL ROAD  
NOKOMIS, FL 34418

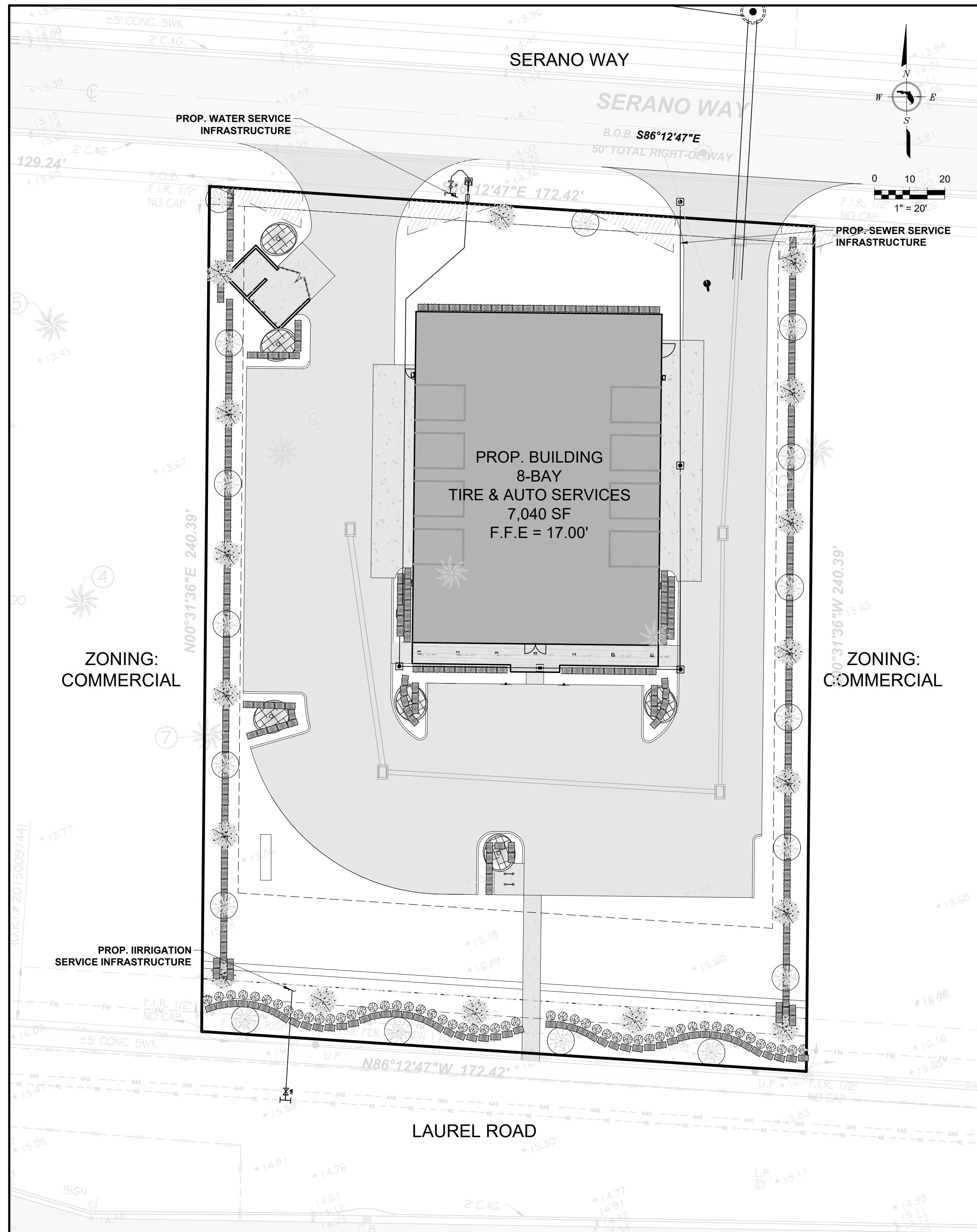
REVISION DESCRIPTION  
REVISED PER 2ND ROUND CITY COMMENTS

BY: AB  
DATE: 11/2022

**LAUREL RICK JOHNSON**  
LAUREL ROAD  
NOKOMIS, FL 34475

**LANDSCAPING & IRRIGATION PLAN**

**SHEET 10 OF 11**



**CALL 48 HOURS BEFORE YOU DIG**

**IT'S THE LAW! DIAL 811** Know what's below. Call before you dig.

SUNSHINE STATE ONE CALL OF FLORIDA, INC.

**NOTES:**  
 ALL EXISTING (SURVEY) & ALL PROPOSED GRADE ELEVATIONS & CONTOURS SHOWN REFER TO N.A.V.D. '88.  
 THESE PLANS MAY HAVE BEEN REDUCED OR INCREASED IN SIZE BY REPRODUCTION(S). THIS MUST BE CONSIDERED WHEN OBTAINING SCALED DATA.

PROJECT: 21-160  
 DATE: 06/22

ANDREA DOUGLAS, L.A.  
 LICENSE # 6687057  
 23150 FASHION DR., SUITE 200, ESTERO FL 33928  
 ANDRES@BORALENGINEERING.COM  
 (P) 239-892-6599



OWNER:  
 P.A. JOHNSON, INC.  
 1000 W. LAUREL WAY  
 NAPLES, FL 34116

DATE	BY	REVISION DESCRIPTION
11/2022	AB	REVISED PER 2ND ROUND CITY COMMENTS

**LAUREL RICK JOHNSON**  
 LAUREL ROAD  
 NOKOMIS, FL 34275

**UTILITY OVERLAY**

**SHEET 10B OF 11**