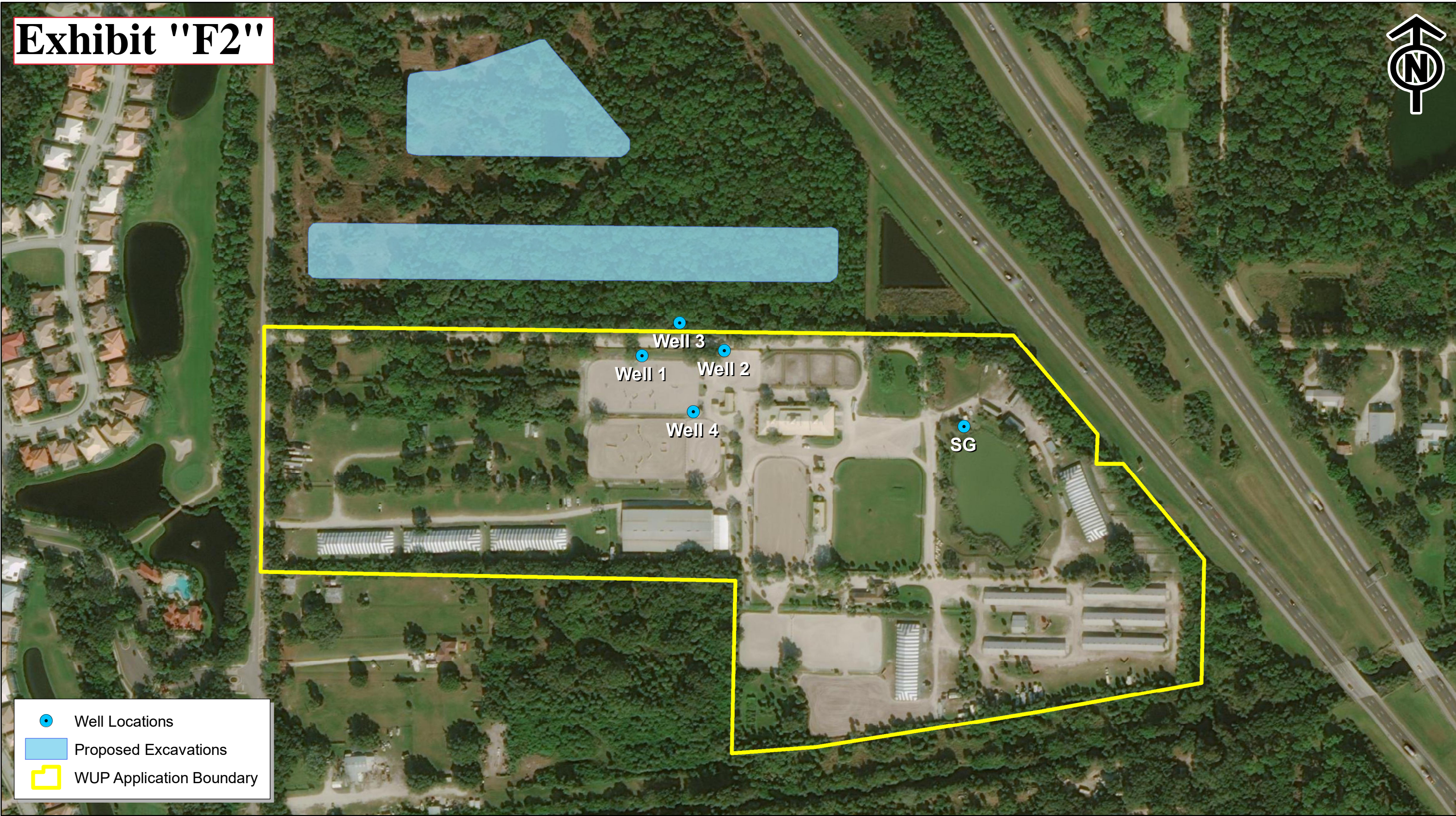

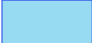



# Exhibit "F2"



 Well Locations

 Proposed Excavations

 WUP Application Boundary

Scale: 1:3,000

2/3/2021

Image: ESRI World Imagery

0200400800

Feet

**Fox Lea Farm, Inc.**  
Well Locations and Proposed Excavations  
*Sarasota County, Florida*

Progressive Water Resources has provided the images or data presented in this map for informational purposes only. This data is not intended to be used in lieu of official survey data provided by a Professional Surveyor licensed by the State of Florida

  
**Progressive Water Resources**  
*Integrated Water Resource Consultants*