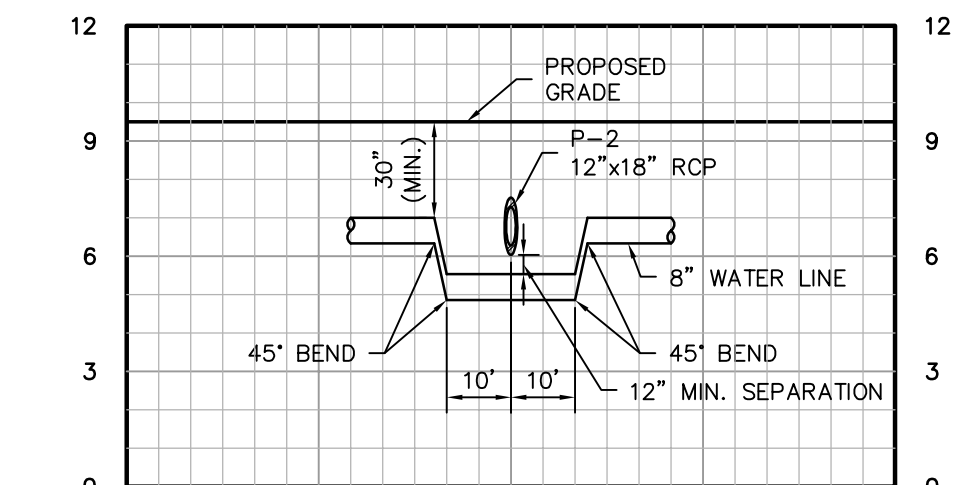
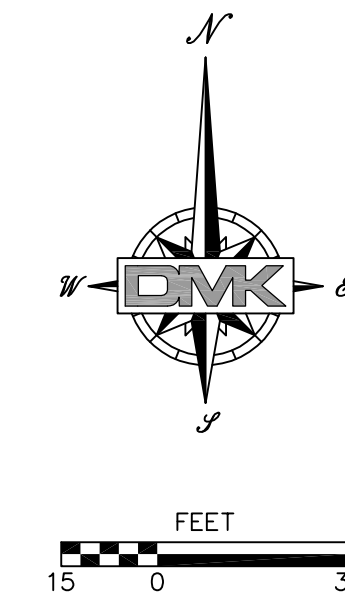
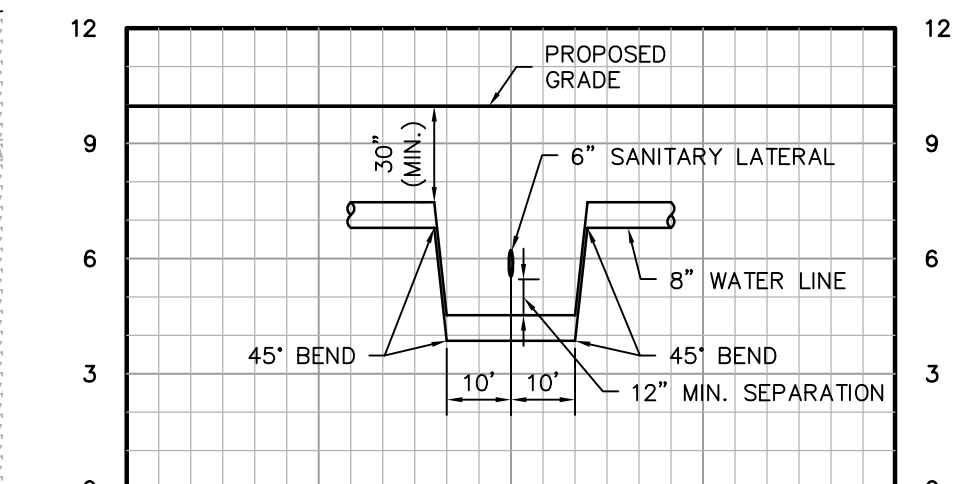


SEE SHEET C3.2 FOR CONTINUATION

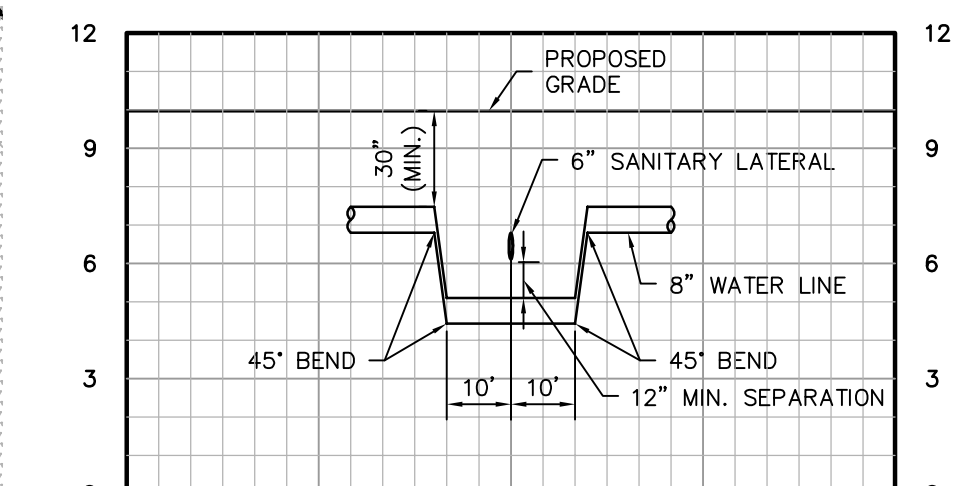
DEPARTMENT OF ENVIRONMENTAL PROTECTION, MEAN HIGH WATER DATA POINT 324, OBTAINED FROM LABINS INTERACTIVE WEB SITE (WWW.LABINS.COM)



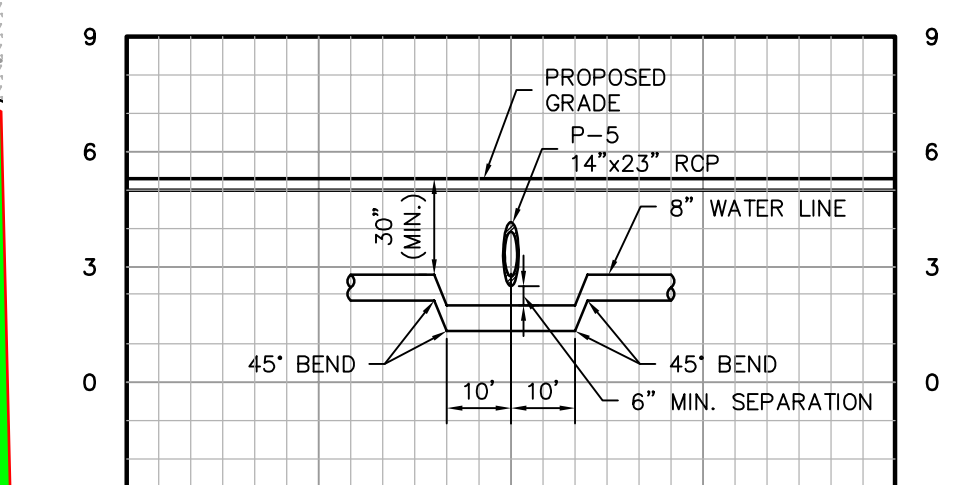
CONFLICT #1
SCALE: H:1"=30'; V:1"=5'



CONFLICT #2
SCALE: H:1"=30'; V:1"=5'



CONFLICT #3
SCALE: H:1"=30'; V:1"=5'



CONFLICT #4
SCALE: H:1"=30'; V:1"=5'

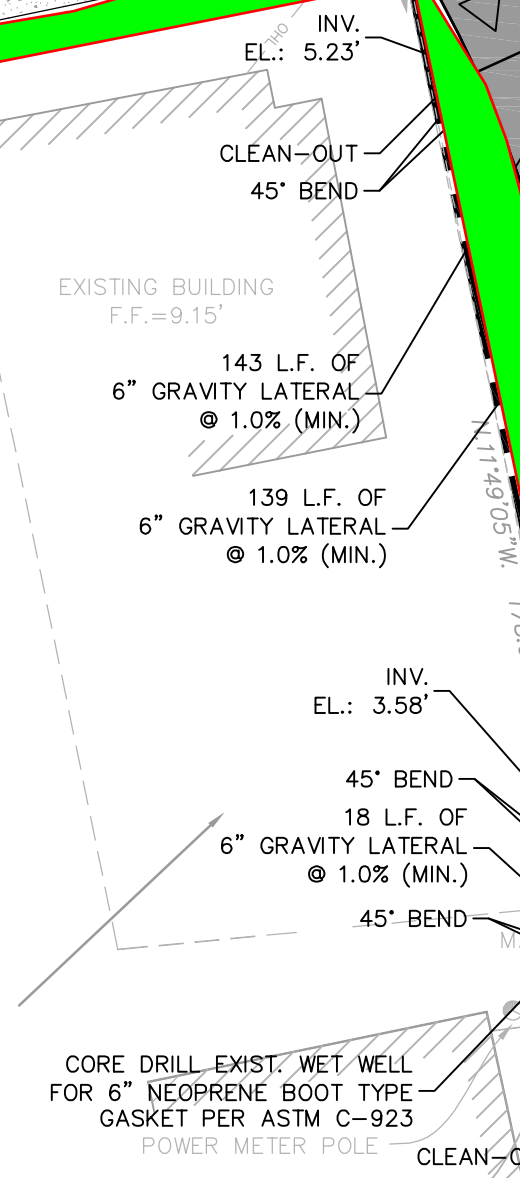
NOW OR FORMERLY LANDS OF:
SARASOTA COUNTY
O.R.I. #1999068337
P.I.D. 0408-02-0024

SOUTH LINE, NORTH 1/2 OF SECTION 7, TWP. 39S, RING. 19E
NORTH LINE, SOUTH 1/2 OF SECTION 7, TWP. 39S, RING. 19E

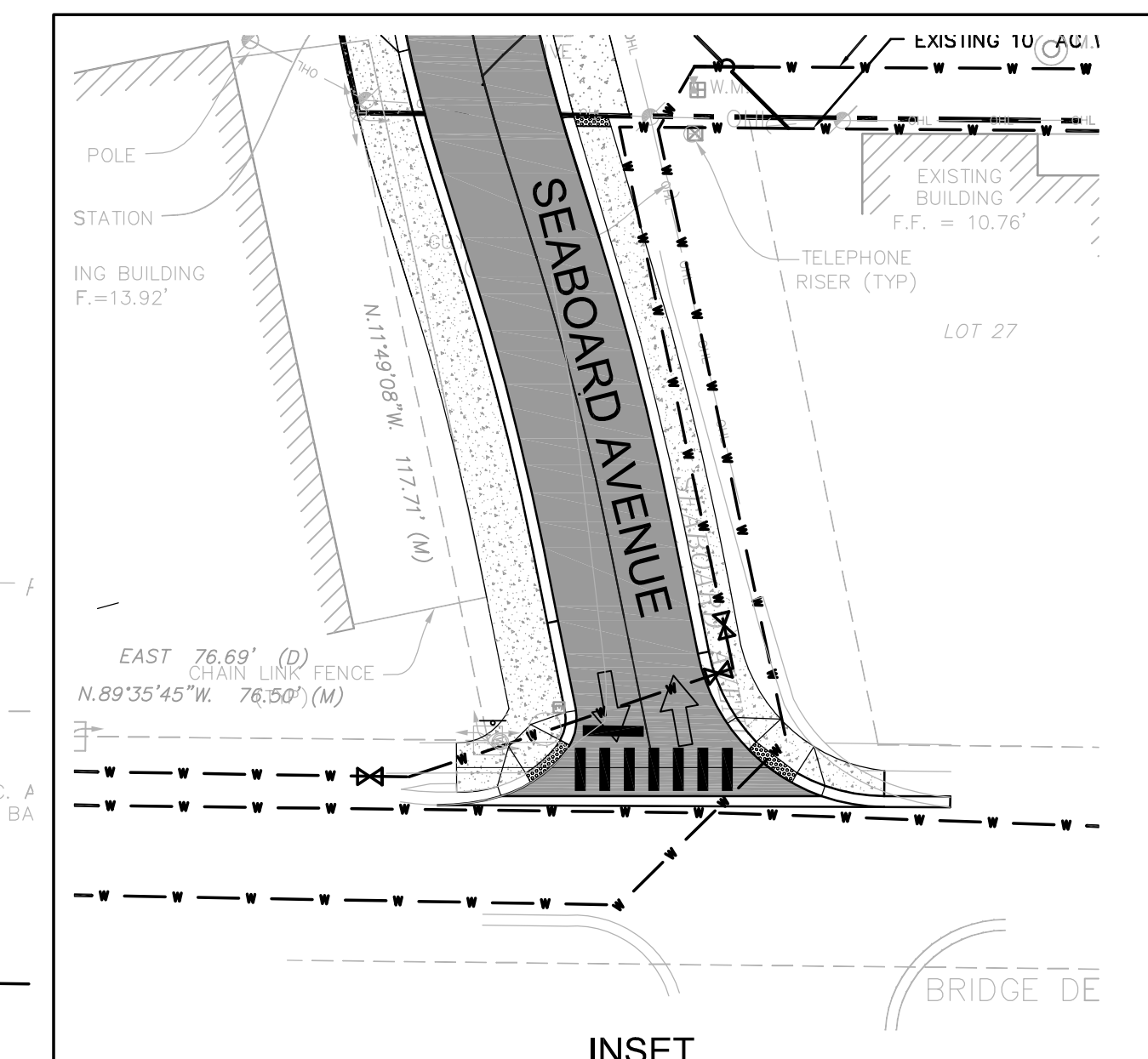
- Bahia Hydroseeding - Row of BahiaSod on each side of Multi-Use Trail
- Bahia Sod

- LEGEND:**
- ASPHALT PAVEMENT
 - PERVIOUS CONCRETE
 - GRASS PARKING
 - CONCRETE MULTI-PURPOSE PATH
 - STABILIZED SAND KAYAK LAUNCH
 - 2 LEG BENCH (QTY 10)
 - 4 LEG BENCH (QTY 2)
 - TRASH/RECYCLE BINS (QTY 10)
 - GRILL LOCATIONS
 - EXISTING JURISDICTIONAL AREA
 - PROPOSED WETLAND RESTORATION AREA
 - PROPOSED JURISDICTIONAL SETBACK

NOW OR FORMERLY LANDS OF:
SARASOTA COUNTY
O.R.I. #2010010150
P.I.D. 0408-02-0026



SEE INSET THIS SHEET FOR CONTINUATION



DMK ASSOCIATES
ENGINEERS/SURVEYORS
421 Commercial Court, Suite C-D
TEL: (941) 412-1293 FAX: (941) 412-1043
C.A. No. 39843

DATE: 6-24-14
CHECKED BY: RCS
SCALE: NOTED

DESIGN BY: RMS
DRAWN BY: RMS
CADD FILE: 13-0066-PLANS-UTIL.dwg

DATE: BY: NO. REVISION

In accordance with 6005-3003 (3) F.A.C., these preliminary engineering documents are not in final form, but are intended to provide a general overview of the project. They are subject to change without notice. The Engineer shall not be responsible for any errors or omissions in these documents. The user of these documents shall verify the accuracy of the information contained herein. The user of these documents shall be responsible for obtaining all necessary permits and approvals from the appropriate authorities. The user of these documents shall be responsible for obtaining all necessary insurance and bonding. The user of these documents shall be responsible for obtaining all necessary professional liability insurance. The user of these documents shall be responsible for obtaining all necessary professional liability insurance.

KREG E. MAHEU P.E.
L.C. NO. 45766
C.A. NO. 39443
DATE:

CLIENT: CITY OF VENICE

PROJECT: SITE IMPROVEMENT PLANS FOR LEGACY PARK

DESC: UTILITY PLAN

C6.1

