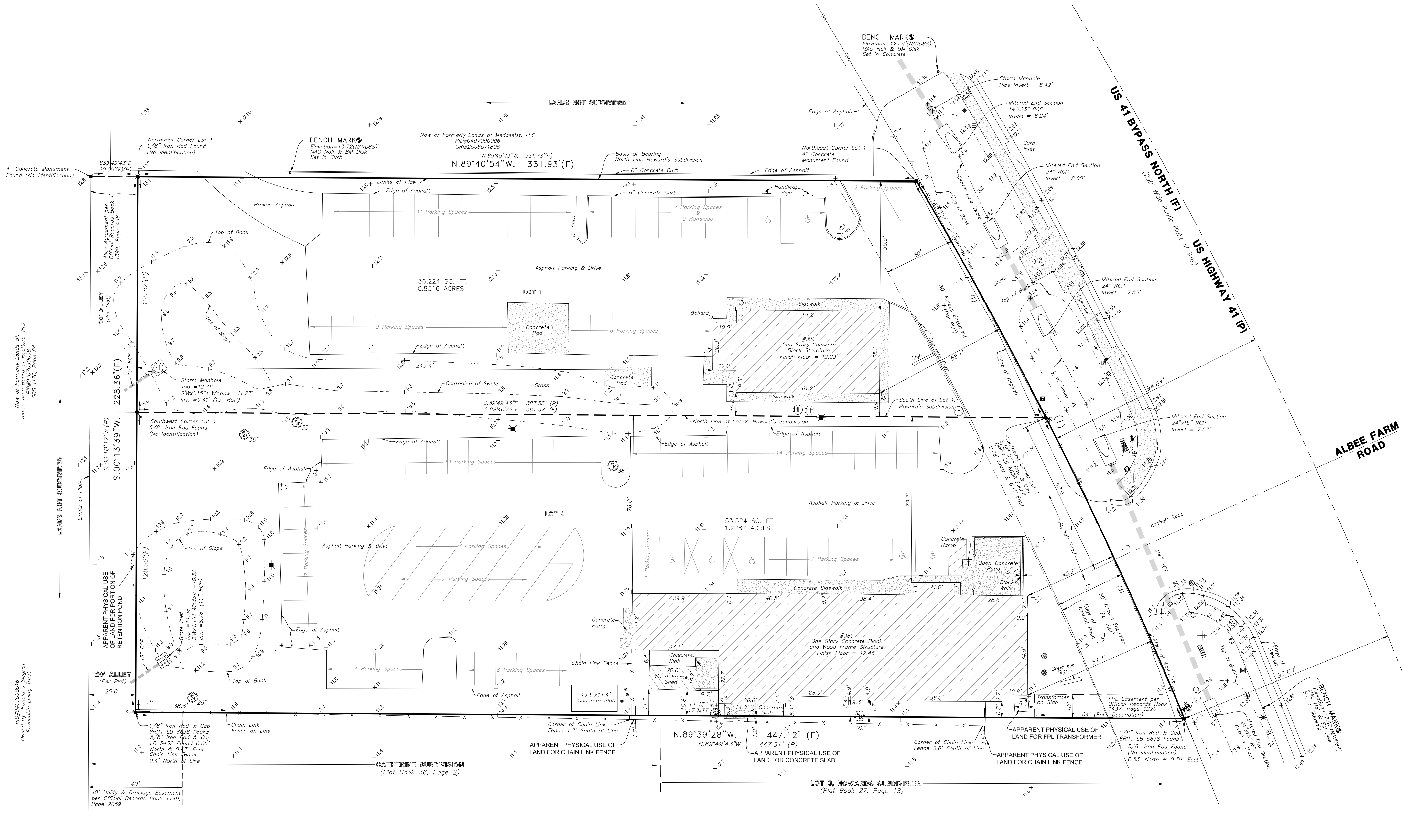


SCALE: 1" = 20'



TREE LEGEND
Oak Tree & Size
MTT Multi Trunk Tree

LEGEND:
Florida Power & Light Manhole
Concrete Power Pole
Electric Hand Held
Unknown Manhole
Traffic Control Pole
Light Pole
Back Flow Preventer
Metal Traffic Light Arm
Phone Riser
Storm Sewer Manhole
Water Service
Back Flow Preventer
Concrete Ballard
Electrical Vault
Overhead Power Lines
MERS Mitered End Section
RCP Reinforced Concrete Pipe
PID Parcel Identification Number
ORB Official Records Book
ORI Official Instrument Number
LB License Business Number
RCP Reinforced Concrete Pipe

DESCRIPTION:
Lots 1 and 2, HOWARD'S SUBDIVISION, as recorded in Plat Book 27, Page 18, of the Public Records of Sarasota County, Florida.
Being in Section 7, Township 39 South, Range 19 East, Sarasota County, Florida.

REPORT OF SURVEY:
1. This plat represents a Boundary Survey showing visible improvements.
2. Bearings shown hereon refer to an assumed meridian, bearing for the North line of Lot 1, Howard's Subdivision = N.89°40'54"W.
3. There may exist other underground fixed interior improvements, which are not visible and are not a part of this survey.
4. Description shown hereon has been prepared for this plat.
5. Subject to easements and rights of way of record, if any. No research has been made of easements or rights of ways of record.
6. This plat has been prepared without the benefit of a Commitment for Title Insurance or a Title Policy.
7. Parcel shown hereon is situated in Flood Zone "X", base flood elevation Not Determined, per Flood Insurance Rate Map 12115C0331G, Index Map dated March 27, 2024.
8. Accuracy: The expected use of the land is "Suburban". The minimum relative distance accuracy for this type of boundary survey is 1 foot in 7,500 feet. The accuracy obtained by measurement and calculation of a closed geometric figure was found to exceed this requirement.
9. (P) Denotes information obtained from record Plat.
10. (F) Denotes information obtained from field measurement.
11. Elevations shown hereon refer to NAVD 88, based on CGS Bench Mark X-38, published elevation = 6.63 feet (NAVD 88).

Curve number 1 (F)
Radius= 1829.86'
Delta= 08°01'31"
Arc= 256.30'
Chord= 256.09'
Chord Brg.= N.26°30'05"W.

Curve number 2 (F)
Radius= 1829.86'
Delta= 03°36'03"
Arc= 115.00'
Chord= 114.98'
Chord Brg.= N.28°42'49"W.

Curve number 3 (F)
Radius= 1829.86'
Delta= 04°25'28"
Arc= 141.31'
Chord= 141.27'
Chord Brg.= N.24°42'04"W.

Curve number 1 (P)
Radius= 1829.86'
Delta= 08°01'31"
Arc= 256.30'
Chord= 256.09'
Chord Brg.= N.26°39'34"W.

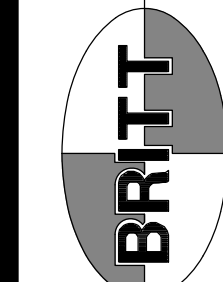
Curve number 2 (P)
Radius= 1829.86'
Delta= 03°36'03"
Arc= 115.00'
Chord= 114.98'
Chord Brg.= N.28°52'18"W.

Curve number 3 (P)
Radius= 1829.86'
Delta= 04°25'28"
Arc= 141.31'
Chord= 141.27'
Chord Brg.= N.24°51'32"W.

COLLIN B. NAMAN, PROFESSIONAL SURVEYOR AND MAPPER
FLORIDA CERTIFICATE NUMBER 7527
NOTE: NOT VALID UNLESS IMPRINTED WITH EMBOSSED SURVEYOR'S SEAL OR VALIDATED SURVEYOR'S DIGITAL SIGNATURE ON PORTABLE DOCUMENT FILE

OVERALL AREA: 89,748 SQ.FT. OR 2.0603 ACRES

BRITT SURVEYING
LAND SURVEYORS AND MAPPERS
CERTIFICATE OF AUTHORIZATION NO. LB 8601
680 US 41 BYPASS NORTH (I), VENICE, FLORIDA, 34285
Telephone: (844) 493-1396
Email: bs@brittsurveying.com



A BOUNDARY SURVEY
LOTS 1 AND 2, HOWARD'S SUBDIVISION
385, 395 US 41 BYPASS N, VENICE, FL 34285

MRT LAWN AND GARDEN CENTER, INC

CERTIFIED TO:

DATE OF SURVEY: MAY 20, 2024

REVISIONS:

FIELD BOOK: 608
PAGE(S): 16, 17, 23
JOB NUMBER: 24-04-19
DRAWN BY: CBN

SHEET
1 of 1