

EXHIBIT A

SKETCH AND DESCRIPTION

PAGE 1 OF 2

THIS IS NOT A BOUNDARY SURVEY

CITY OF VENICE AIRPORT

A parcel of land located in the Northeast 1/4 of Section 19, Township 39 South, Range 19 East, City of Venice, Sarasota County, Florida more particularly described as follows: Commencing at the North 1/4 Corner of Said Section 19 and considering the North line of the Northeast 1/4 of said Section 19 to bear South 89°47'37" East with all bearing contained herein relative thereto; thence South 89°47'37" East along and with said North line a distance of 47.65 feet; thence South 00°37'40" West to a point on the South Right-of-Way of Airport Road East being the point of beginning; thence South 89°35'39" East along and with said Right-of-Way a distance of distance of 809.52 feet; thence South 00°38'34" West, a distance of 58.24 feet; thence South 89°23'02" East, a distance of 526.49 feet; thence North 00°44'41" East to a point on the South Right-of-Way of Airport Road East, a distance of 60.17 feet; thence South 89°35'39" East along and with the South Right-of-Way of said Airport Avenue East a distance of 455.14 feet; thence South 00°36'47" West, a distance of 380.87 feet; thence North 89°36'55" West, a distance of 450.39 feet; thence North 00°13'27" East, a distance of 153.89 feet; thence North 89°23'24" West, a distance of 529.80 feet; thence South 00°22'05" West, a distance of 36.27 feet; thence North 89°37'37" West, a distance of 285.41 feet; thence North 00°37'33" East, a distance of 67.31 feet; thence North 89°32'37" West, a distance of 164.63 feet; thence North 00°27'23" East, a distance of 73.13 feet; thence North 89°53'54" West, a distance of 143.25 feet; thence South 00°36'52" West, a distance of 79.07 feet; thence North 89°35'45" West, a distance of 216.77 feet; thence North 00°37'40" East, a distance of 200.96 feet to the Point of Beginning. Containing 9.8226 Acres, more or less.

BRIGHAM/ALLEN LAND SURVEYING

LB 7898

807 U.S. HIGHWAY 41 BYPASS SOUTH

SUITE E

Venice, Florida 34285

ph. (941) 493-4430

brighamallensurveying@gmail.com

UNLESS IT BEARS THE SIGNATURE AND THE ORIGINAL RAISED SEAL OF A FLORIDA LICENSED SURVEYOR AND MAPPER THIS DRAWING, SKETCH, PLAT OR MAP IS FOR INFORMATIONAL PURPOSES ONLY AND IS NOT VALID.

BY:



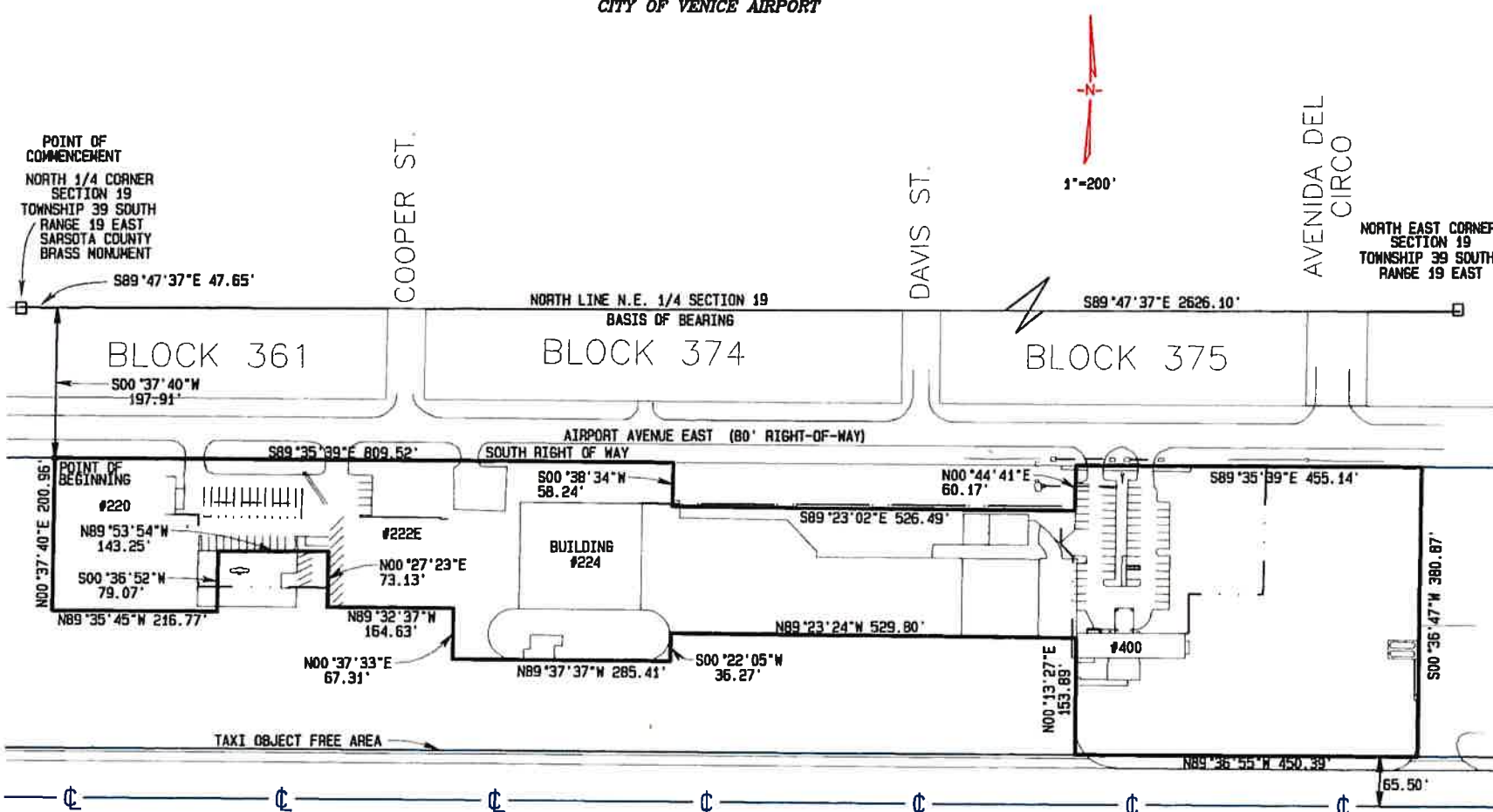
Michael P. Allen

Professional Surveyor and Mapper PSM 6822 State of Florida

DATE 08-28-15

SKETCH AND DESCRIPTION
 PAGE 2 OF 2
 THIS IS NOT A BOUNDARY SURVEY
 CITY OF VENICE AIRPORT

EXHIBIT A



BRIGHAM/ALLEN LAND SURVEYING
 LB 7898
 807 U.S. HIGHWAY 41 BYPASS SOUTH
 SUITE E
 Venice, Florida 34285
 ph. (941) 493-4430
 brighamallensurveying@gmail.com

UNLESS IT BEARS THE SIGNATURE AND THE ORIGINAL RAISED SEAL OF A FLORIDA LICENSED SURVEYOR AND MAPPER THIS DRAWING, SKETCH, PLAT OR MAP IS FOR INFORMATIONAL PURPOSES ONLY AND IS NOT VALID.

By: Michael P Allen DATE 08-28-16
 Professional Surveyor and Mapper PSM 6822 State of Florida