

FLORIDA SEAL

6.22.2023

SSUANCE

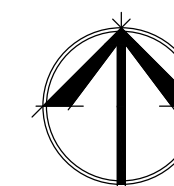
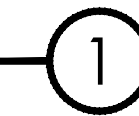
PHASE	CD
PR NO	22314

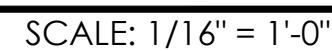
A1.0



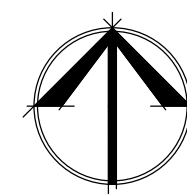
SITE PLAN

SCALE: 1/32" = 1'-0"





①



GLAZING BASIS OF DESIGN:

STOREFRONT:

- LAMINATED LARGE MISSILE IMPACT VISION GLAZING
- 1/4" GREY FT GLASS, SOLARBAN 60XL #2
- 1/2" CLEAR AIRSPACE
- 1/4" CLEAR HS GLASS
- 0.090" CLEAR PVB
- 1/4" CLEAR HS GLASS
- LOW-E GLAZING

DOORS:

- LAMINATED
- 1/4" GREY FT GLASS, SOLARBAN 60XL #2
- 0.090" CLEAR PVB
- 1/4" CLEAR HS GLASS
- LOW-E GLAZING

PROVIDE SAMPLE (12" X 12" MIN.) FOR COLOR APPROVAL

GLAZING MANUFACTURERS:

- GUARDIAN INDUSTRIES CORP.
- PPG INDUSTRIES, INC.
- VIRACON, INC.
- OLDCASTLE

EXTERIOR PAINTING BASIS OF DESIGN:

PORTLAND CEMENT PLASTER (10PH OR LOWER):

- PRIMER: PPG PAINTS; 4-809 SERIES PERMA-CRETE® INT./EXT. ACRYLIC MASONRY SURFACE SEALER
- FINISH: PPG PAINTS; 739 SERIES ACRI-SHIELD EXTERIOR HOUSE AND TRIM SATIN-ACRYLIC LATEX

PORTLAND CEMENT PLASTER (10-13PH)

- PRIMER: PPG PAINTS; 4-503 PERMA-CRETE® INTERIOR/EXTERIOR ALKALI RESISTANT PRIMER
- FINISH: PPG PAINTS; 739 SERIES ACRI-SHIELD EXTERIOR HOUSE AND TRIM SATIN-ACRYLIC LATEX

FIBER CEMENT BOARD:

- PRIMER: PPG; 4-603 PERMA-CRETE®
- 1st & 2nd FINISH COAT: PPG; 6-900XI SPEEDHIDE®

HOLLOW METAL FRAMES & FERROUS METALS (SEMI-GLOSS):

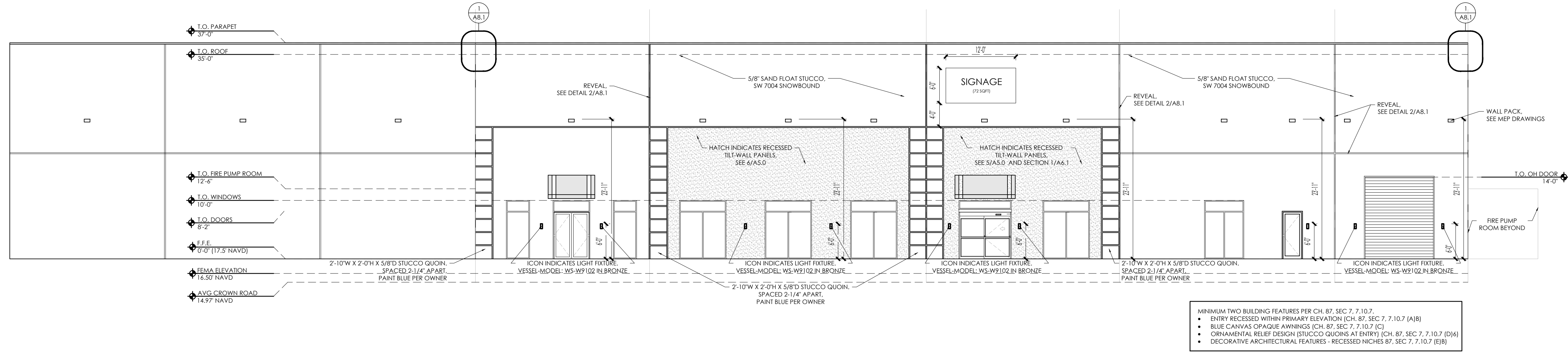
- PRIMER: PPG; 90-912 PITT-TECH PLUS®
- 1ST & 2ND FINISH COAT: PPG; 90-1210 PITT-TECH PLUS®

WOOD (SEMI-GLOSS):

- PRIMER: PPG; 6001 HYDROSEALER
- 1ST & 2ND FINISH COAT: PPG; 2416 ULTRA-HIDE® 150

ACCEPTABLE ALTERNATE MANUFACTURERS:

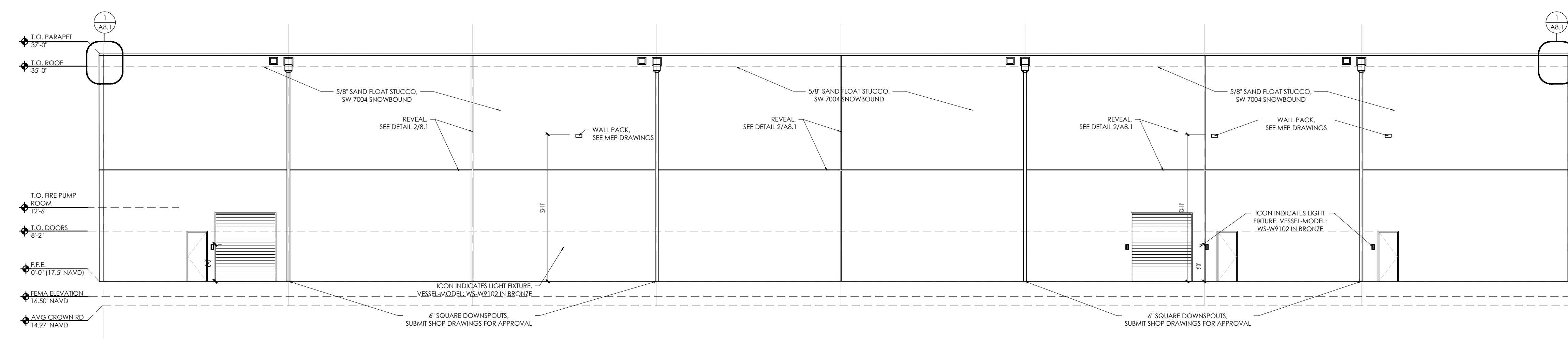
- BENJAMIN MOORE
- SHERWIN-WILLIAMS
- BEHR



NORTH ELEVATION

SCALE: 3/32" = 1'-0"

1

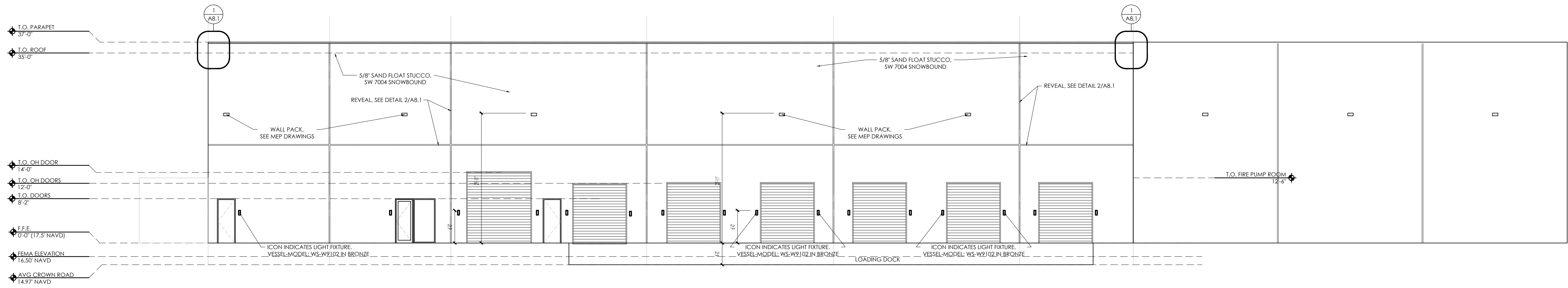


EAST ELEVATION

SCALE: 3/32" = 1'-0"

2

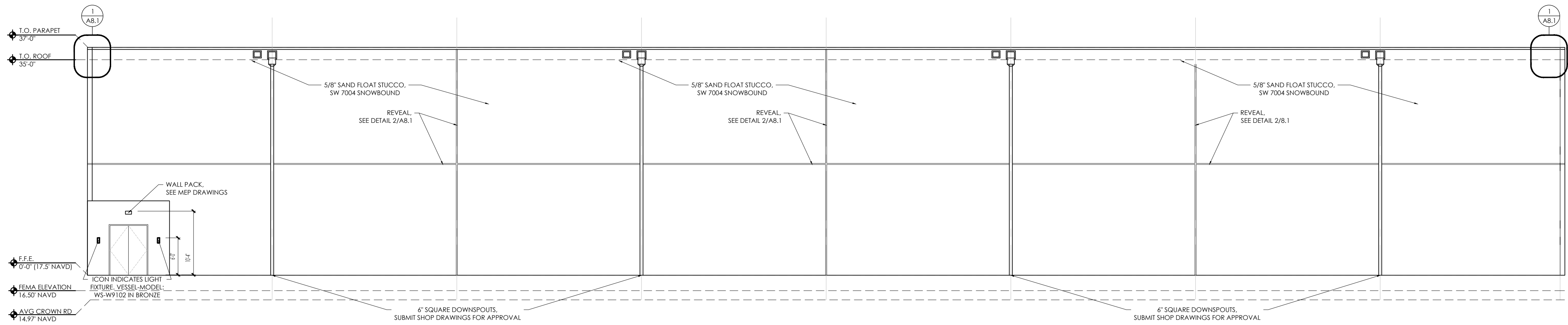
MON 28 AUG 2023 4:02:27:54AM EST> \\USERS\EMILY5-1\APPRODATA\LOCAL\TEMP\ACHIBUILD_16728\22314_LINDA LANE-VENICE-POOL CORP_CD.DWG



SOUTH ELEVATION

SCALE: 3/32" = 1'-0"

1



WEST ELEVATION

SCALE: 3/32" = 1'-0"

2

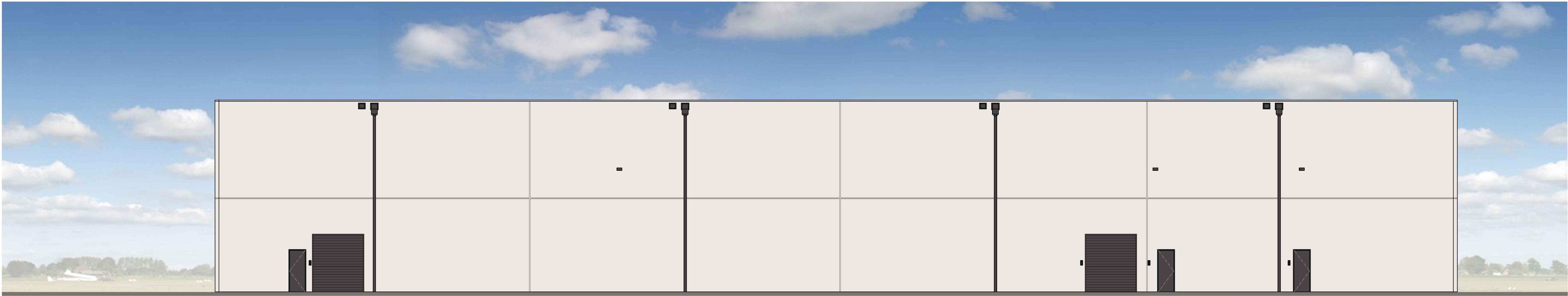
MON 28 AUG 2023 4:10:27:57AM EST> \\USERS\EMILYS-1\APPROVAL\LOCAL\TEMP\ARCHIBUILD_16728\22314_LINDA LANE-VENICE-POOL CORP_CD.DWG



NORTH ELEVATION

SCALE: 3/32" = 1'-0"

1



EAST ELEVATION

SCALE: 3/32" = 1'-0"

2

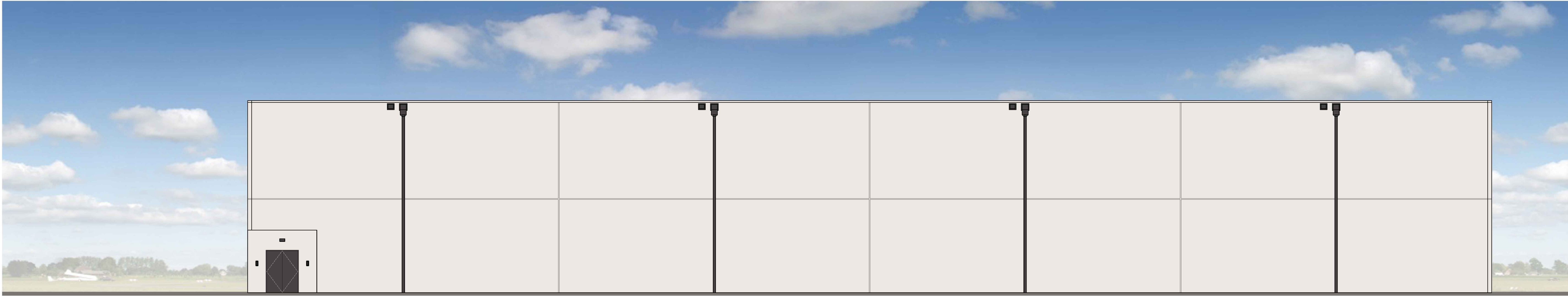
MON 28 AUG 2023 <10:27:59AM EST> \\USERS\EMILYS-1\APPROVAL\LOCAL\TEMP\ARCHIBUILD_16728\22314_LINDA LANE-VENICE-POOL CORP_CD.DWG



SOUTH ELEVATION

SCALE: 3/32" = 1'-0"

1

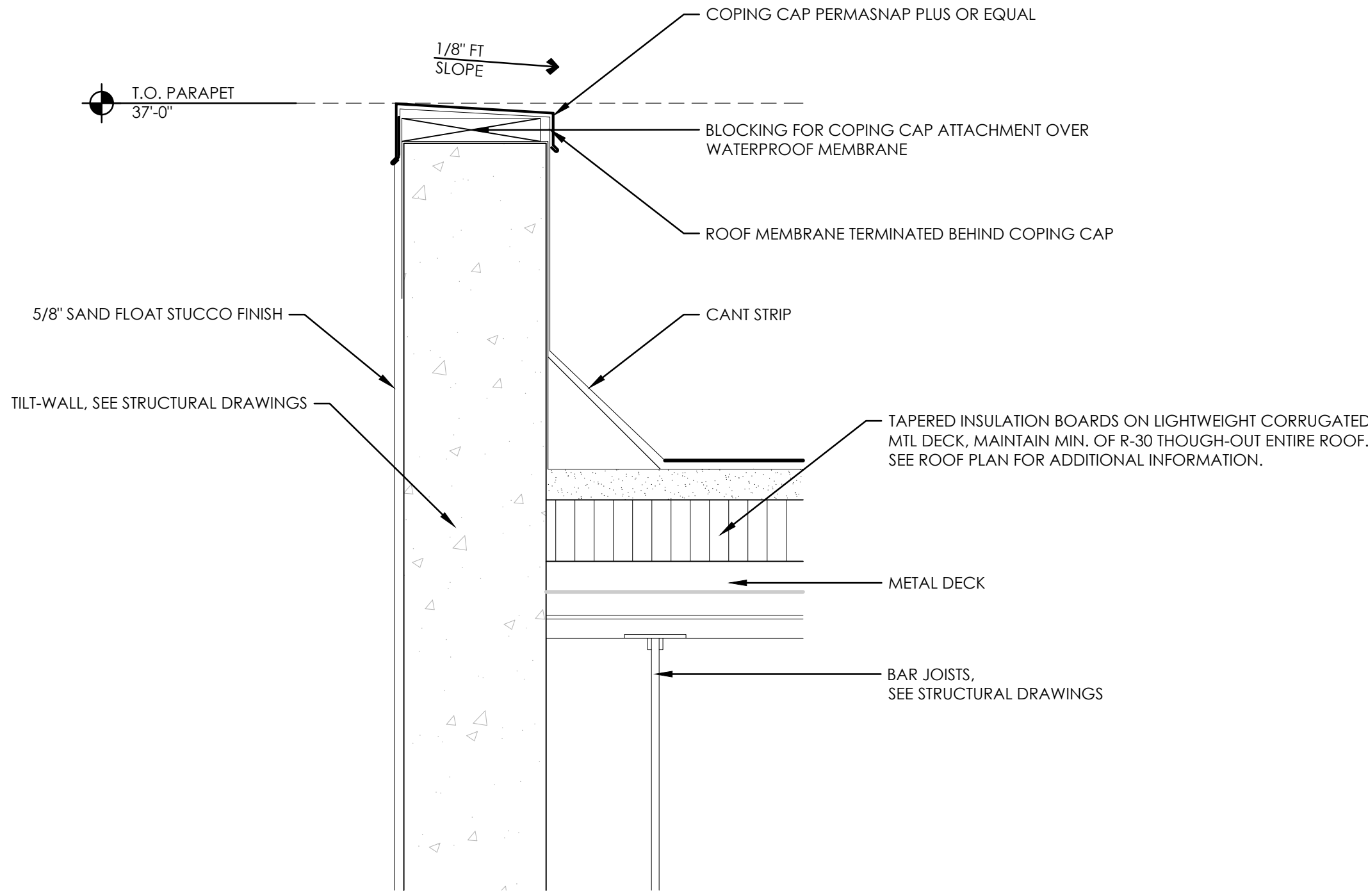


WEST ELEVATION

SCALE: 3/32" = 1'-0"

2

MON 28 AUG 2023 4:02:28:01AM EST> \\USERS\EMILY5-1\APPRODATA\LOCAL\TEMP\ACHPUBLISH_16728\22314_LINDA LANE-VENICE-POOL CORP_CD.DWG



FASCIA DETAIL
SCALE: 1- 1/2" = 1'-0"

1