



PARKS, PRESERVES, AND RECREATION MASTER PLAN

Sarasota County



A Team of National Experts

**Parks + Open Spaces +
Heritage Tourism**

David L. Barth, CPRP, RLA, AICP
Carlos F. Perez, RLA

**Greenways + Blueways +
Trails**

Dena Kennett, ASLA + Ken Ray, RLA

**Environmental Lands +
Preserves**

Jay Exum, Ph.D

**Recreation, Operations,
Maintenance Management,
Athletics**

Ken Ballard, CPRP

Implementation + Funding

David L. Barth, CPRP, RLA, AICP
+ Ron Vine + Ryan Ruskay

Market Research

Ron Vine

Comprehensive Planning

Francis Chandler-Marino

General Objectives

Complete the plan in 18 months

Defensible + solves identified deficiencies

Progressive + Innovative + “do-able”

Specific Objectives

1. Identify and prioritize residents' needs, including a statistically valid mail/telephone survey.
2. Review, analyze, and make recommendations regarding the County's parks, preserves, and recreation level-of-service (LOS) to determine if it is sufficient; benchmark against other comparable communities.
3. Identify gaps and opportunities for both indoor and outdoor park and recreation facilities; and provide recommended solutions, including recommended alternatives and estimated costs.

Specific Objectives

4. Identify gaps and opportunities for major bicycle and pedestrian connections, potential benefits, recommended solutions, including recommended alternatives and estimated costs.
5. Identify the recommended type and location of new athletic fields and complexes to meet the public needs for the next 5, 10 and 20 year time frames. The recommendations will include types of sports and the level of play (adult, children, youth, etc.); types of amenities (such as lighting, restrooms, concessions, etc.); and estimated costs.
6. Identify potential improvements to the County's existing Environmentally Sensitive Lands Protection Program (ESLPP) and Neighborhood Parklands Program (NPP), including potential sites, passive recreation, amenities, public access, and estimated costs.

Specific Objectives

7. Identify potential acquisitions for the County's ESLPP and NPP programs and other necessary acquisitions that provide a needed connection to, or meaningful expansion of an existing site.
8. Using best practices, update the classification system found in the comprehensive plan for the County's parks, preserves, and recreation facilities (including school parks).
9. Identify emerging trends in parks, preserves, and recreation facilities and programs in comparable counties or cities (based on size, budget, populations, etc.).

Specific Objectives

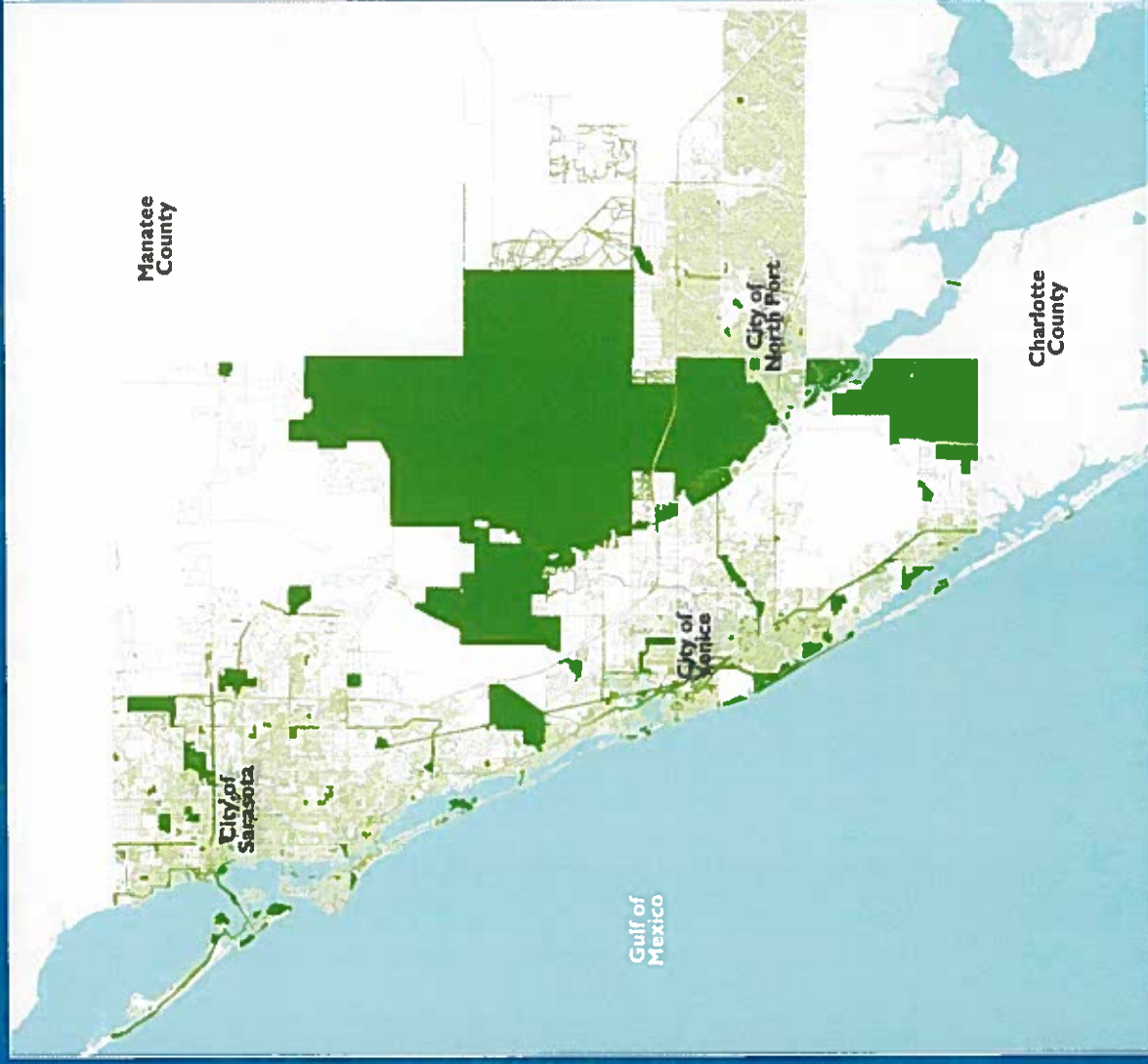
10. Develop alternatives scenarios to meet identified gaps, residents' needs, and emerging trends.
11. Develop a long range plan for Parks, Preserves, and Recreation Plan including recommended priorities for the next 5, 10, and 20 years; estimated costs; and a financially feasible plan using existing resources for acquisition, development, and corresponding operational impacts utilizing projected revenues.
12. Review and analyze the County's parks, preserves, and recreation operating budget to determine if it is sufficient to meet current needs; benchmark against other comparable communities.
13. Prepare a sound financially feasible plan using existing resources to implement the long range plan, including ideas for future funding utilizing projected revenues.

Specific Objectives

14. Recommend revisions to the County's Comprehensive Plan and land development regulations to accommodate park and trail development, trail connectivity, and preserves.
15. Identify potential partnerships to implement the long-range plan.
16. Develop concept plans for three of the County's parks (TBD) including the North County Sports Complex that would be part of the 5-year long-range plan.
17. Review and develop recommendations on County Impact Fees, needed amendments, boundaries, and calculation methodology.
18. Evaluate current Interlocal Agreements and impact on PRNR maintenance and operations budget.

Sarasota County Parks, Preserves, and Recreation Sub-Systems

- Beaches
- Natural Lands + Preserves + Reserves + Neighborhood Parklands
- Turtle Beach Campground
- Athletic Fields
- Recreation + Community Centers + Community Parks
- Rowing Venues
- Paw Parks
- Water Access
- Bicycle + Pedestrian + Trail Paths
- State Park + Streets
- Artificial Reefs



Public Involvement and Needs Assessment

- Elected Official Interviews
- Advisory Councils Meetings
- Focus Group Interviews
- Staff Interviews
 - Public Workshops
 - Recreation Program User Interviews (e.g. youth, families)
 - On-Site Intercept Interviews
- On-line Survey

Qualitative

Quantitative

Defensible + Identified Needs

Observations

- Statistically Valid Survey
- Acreage + Square Footage Level of Service
- Access Level of Service
- Capacity Level of Services
- Program Level of Service
- Quality Level of Services
- PRORAGIS Benchmarking
- Supply + Demand Analysis

- Parks + Preserve Conditions + Best Use Assessment
 - National +Regional + Local Trends
 - Population + Demographic Overview

Project Schedule

