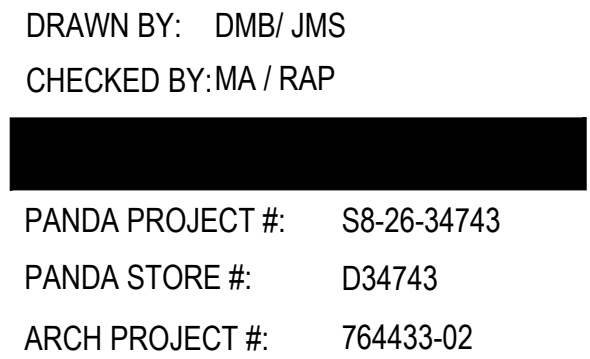
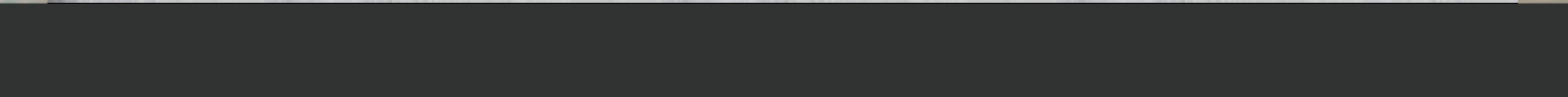


NO.	MANUFACTURER	MFG#	COLOR	FINISH	NOTES
EIFS-1	STO	STOTHERM ESSENCE SYSTEM	SW 7646 FIRST STAR	FINE	BUILDING BODY NOTE: EIFS TO RECEIVE FINAL COAT OF STO-CORP STO-LASTIC ELASTOMERIC COATING TINTED TO DESIRED COLOR AS SCHEDULED
EIFS-2	STO	STOTHERM ESSENCE SYSTEM	SW 7069 IRON ORE	FINE	EIFS ACCENT BAND
EIFS-3	STO	STOTHERM ESSENCE SYSTEM	PANTONE COLOR P200C - RED	FINE	EIFS BEHIND TRELLIS
ST-1S	CORONADO STONE PRODUCTS	CHISELED STONE SILL	CHARCOAL	-	STONE CAP (3/8" VERTICAL JOINT - MORTAR TO MATCH STONE CAP)
ST-1	CORONADO STONE PRODUCTS	STRIP STONE	BLACK FOREST	-	WAINSCOT CONTACT: 864-962-1221 PROVIDE 3/8" MORTAR JOINTS. MFG.: ARGOS, COLOR: CHARCOAL
CD-1	FIBERON	WILDWOOD	BAMBOO	-	COMPOSITE CLADDING - CONTACT: MARIA SCHOLLER 419-704-5924 EMAIL: MARIA.SCHOLLER@FIBERONCLADDING.COM
MTL-1	EXCEPTIONAL METALS	-	"PANDA EXPRESS SW7069 - IRON ORE"		CAP FLASHING
MTL-2	PANDA VENDOR	ALLEN INDUSTRIES	PMS BLACK- 7C	SATIN FINISH	CANOPY W/ LED W/ DOWN LIGHT AROUND BUILDING
MTL-3	BERRIDGE	TEE PANEL, 24 GA. STEEL	MATTE BLACK	-	1" SEAM AT 12 3/4" O.C.

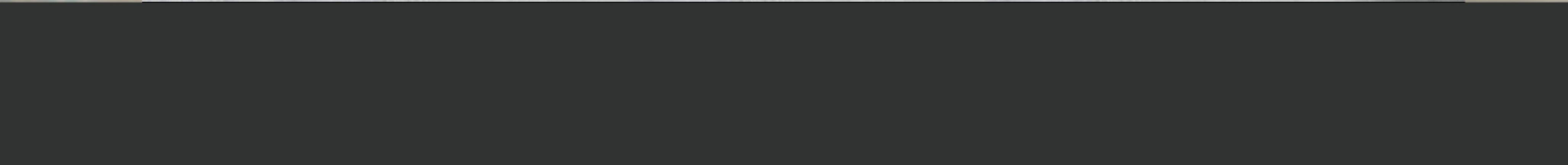
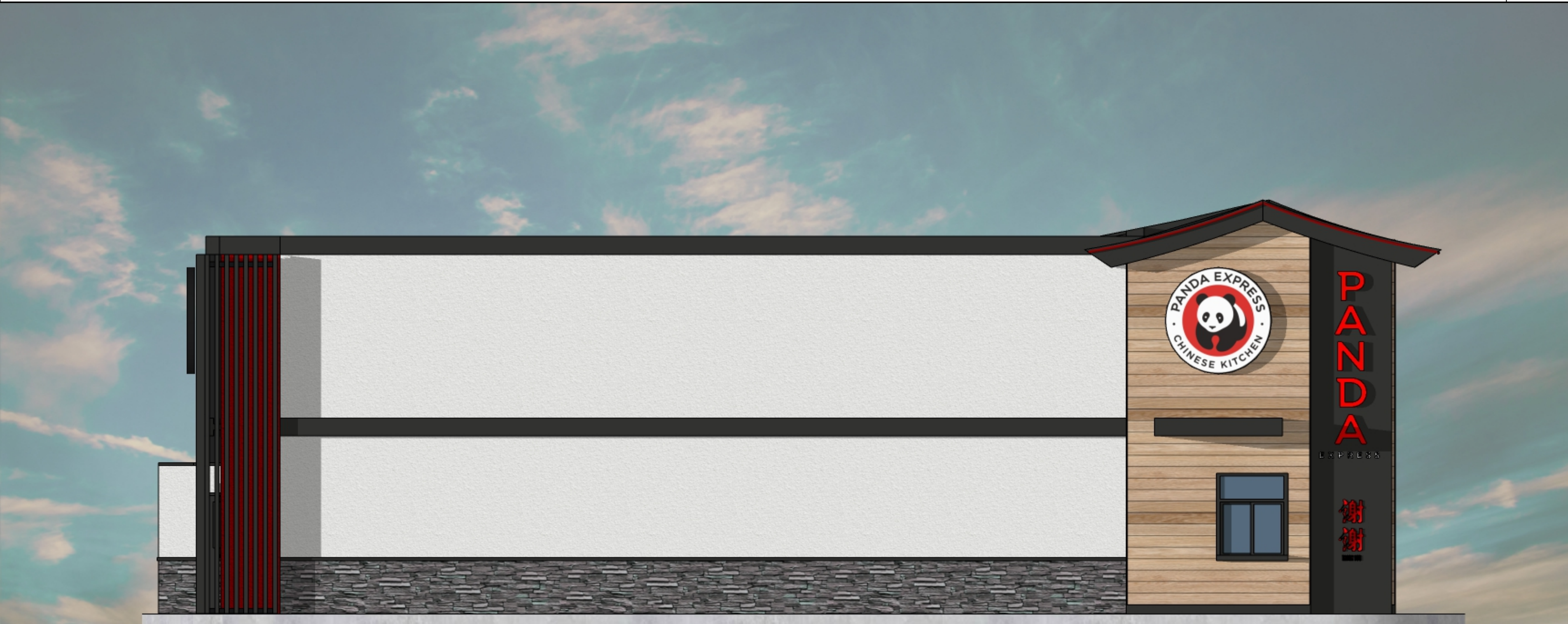
INSTALLED AND FURNISHED BY G.C. UNLESS NOTED OTHERWISE.





ENTRY ELEVATION02

Scale= N.T.S. A-201



*SEE SHEET A-200 FOR EXTERIOR FINISH SCHEDULE

DRIVE-THRU ELEVATION01

Scale= N.T.S. A-201



PANDA EXPRESS, INC.
1683 Walnut Grove Ave.
Rosemead, California
91770
Telephone: 626.799.9898
Facsimile: 626.372.8288

All ideas, designs, arrangement and plans indicated or represented by this drawing are the property of Panda Express Inc. and were created for use on this specific project. None of these ideas, designs, arrangements or plans may be used by or disclosed to any person, firm, or corporation without the written permission of Panda Express Inc.

REVISIONS:	

ISSUE DATE:	
PERMIT SET	10/22/25

DRAWN BY: DMB/ JMS
CHECKED BY:MA / RAP

PANDA PROJECT #: S8-26-34743
PANDA STORE #: D34743
ARCH PROJECT #: 764433-02



PANDA EXPRESS
PANDA HOME ESSENTIALS
2217 LAUREL RD
NOKOMIS, FL 34275

A-201

EXTERIOR ELEVATIONS

PANDA HOME ESSENTIALS R2