



# LDR Proposal from Venice Voters

Ron Smith for Venice Unites

Dec. 13, 2022

# Citizen Input on LDRs

- Hundreds of citizens provided input throughout the process to EAB, ARB, HPB, Planning Commission and City Council
- Hundreds more emailed City Council
- More than 1,400 signed a petition calling for a freeze of height limits downtown
- Local groups jointly asked City Council to delay LDR approval in June: Venice Audubon, Sarasota Alliance for Historic Preservation, Save Downtown Venice, and others



**Preserve What Makes Venice Special**

- Protecting Venice's vibrant downtown and historic districts enhances the whole city's property values.
- Historic buildings are small-business incubators, create jobs and contribute to a thriving business district.
- Vibrant historic towns like Venice attract tourism dollars. International visitors interested in historic areas stay longer, visit more places, and spend more per day than other tourists.

**Preserving Venice's historic assets is good for our economy, our way of life and job creation. Let's keep our historic buildings alive and in use for future generations.**

Concerned Citizens for Historic Venice.

# Venice Unites



- In August, a group of voters launched an effort to ensure the citizens were heard
- They used the mechanism created in the City Charter to seek the repeal and reconsideration of the LDRs
- Voters have eagerly sought the petition out to sign on

# Venice Unites Requests

---



## Let's talk about **HEIGHT**

Venice considers whether to allow taller buildings downtown

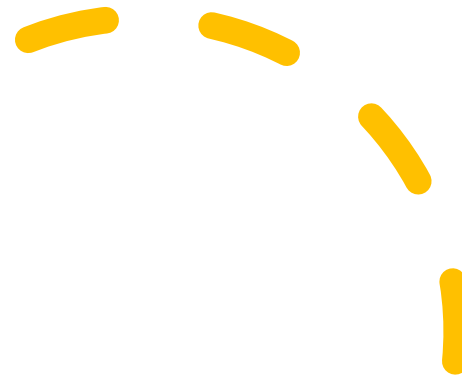
Earle Kimel Sarasota Herald-Tribune | USA TODAY NETWORK

VENICE – Height and history – and how those two topics will be treated in Venice's new  
and development rules – dominated discussion this week at a meeting of the Venice City  
Venice Mayor Ron Feinsod said he's firmly op-

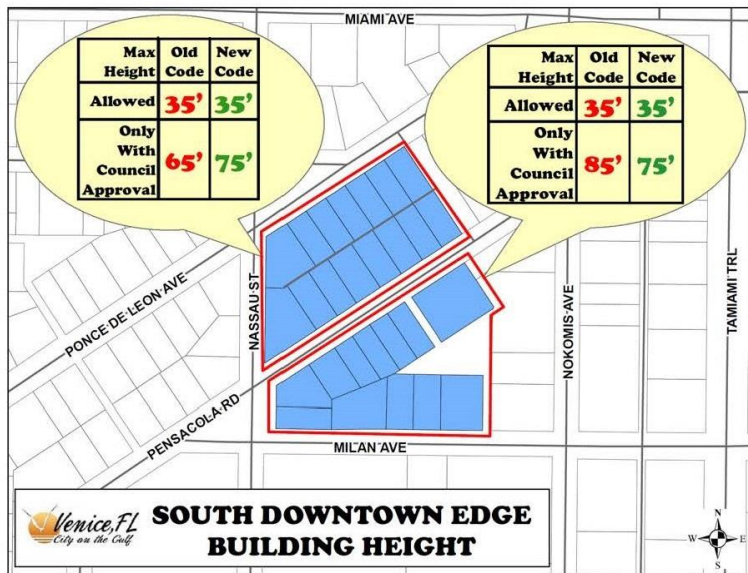
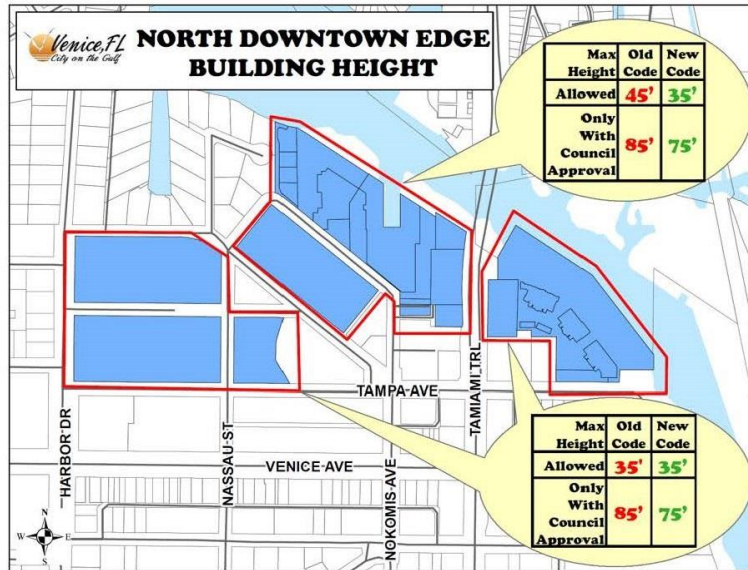


## Downtown Building Heights

- Protecting Downtown's charm and coherence
- Preserving one of Venice's most valuable assets
- Removing incentive for historic building teardowns



So much has already been lost



# Downtown Edge District

- Protecting neighborhood compatibility
- Removing incentives for destroying historic assets on Milan, Ponce de Leon, Pensacola and Nassau
- Ensuring appropriate scale of residential development



What a 30-foot-tall home looks like in Downtown Edge





**75 Feet**



What LDRs  
allow in  
Downtown  
Edge



# Commercial Development in PUDs

- Maintaining neighborhood compatibility
- Keeping out-of-scale development out of communities
- Honoring Venice's Comprehensive Plan



# Wildlife Assessments

- Ensuring compliance in the city with state regulations on building sites
- Preserving Venice's threatened and endangered species
- Putting little financial burden on home builders

Thank  
You

