

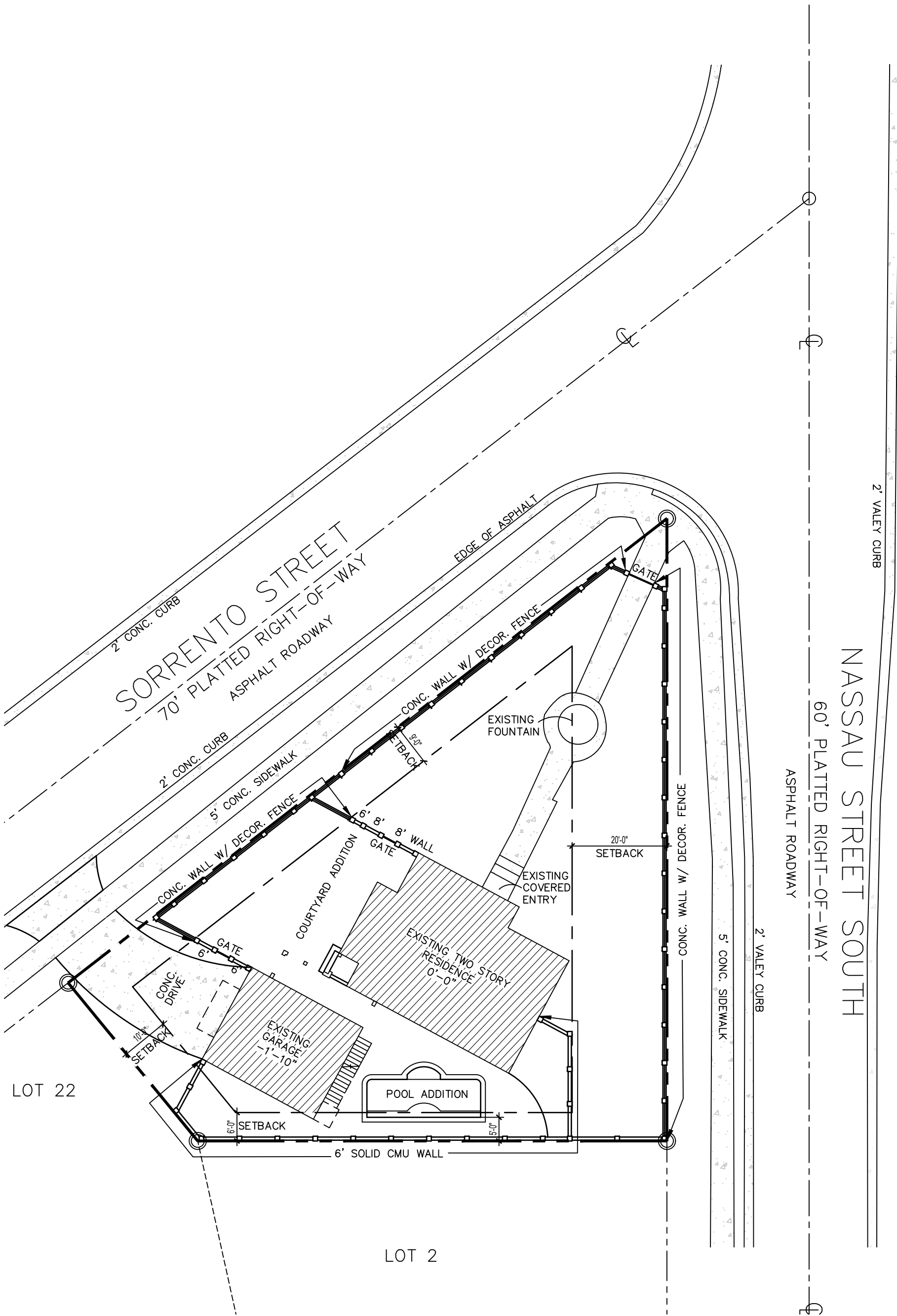
Project: **Jeromin Residence**
Renovations to Historic Residence
500 Nassau St.
Venice, FL 34285

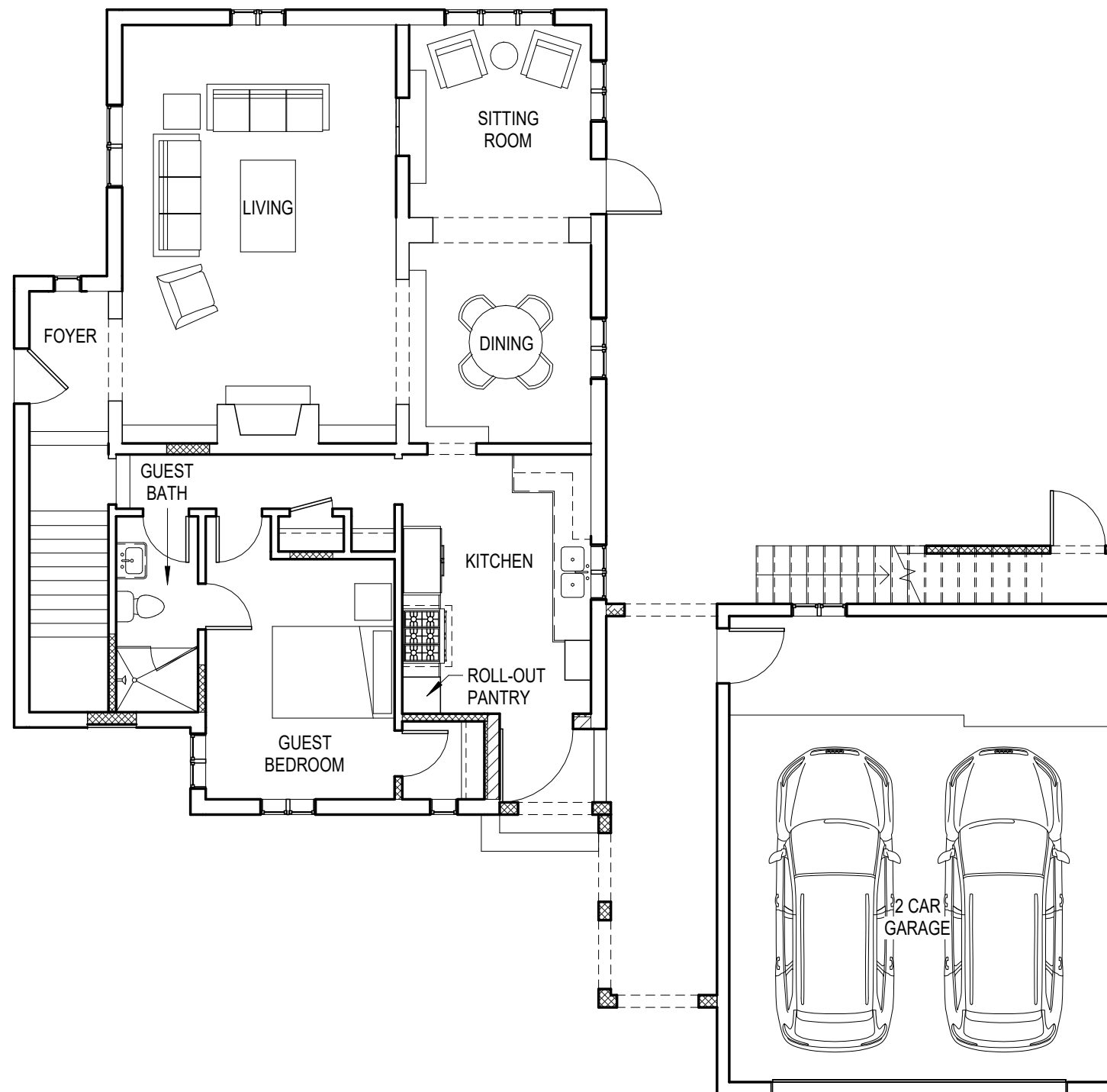
Date: August 5, 2025

Subject: Narrative for Architectural Review Board

The owners of this historic home on Nassau Street in the Venezia Park District of Venice are proposing the removal of a non-original addition on the front façade of the house, removal of a non-original connecting porch that connects the guest house and main house that is in a state of disrepair. The owners are proposing a new connecting structure between the main residence and carriage house that allows access from the second level of the two structures. In addition this project will include replacement of the exterior doors and windows, repainting and repair of the exterior stucco, replacement of the existing roof, site walls and accent walls along the property line.

Also included will be miscellaneous interior renovations, updating of the existing kitchens and bathrooms, a new small swimming pool, and minor modifications to site work and landscaping.



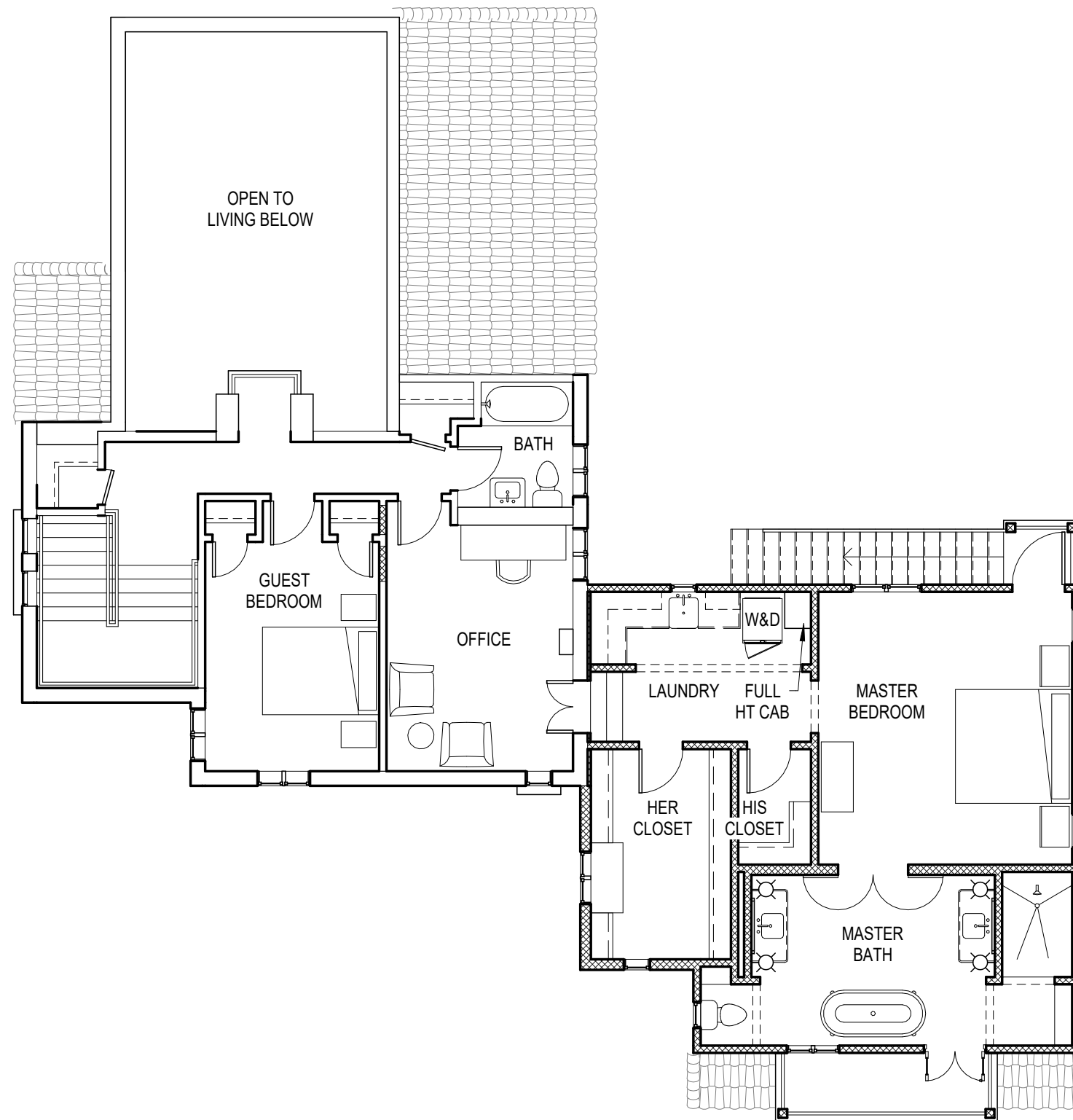


JEROMIN RESIDENCE

500 NASSAU STREET SOUTH, VENICE, FLORIDA

GROUND FLOOR PLAN

Scale: 1/8" = 1'-0"
Date:08.06.25



JEROMIN RESIDENCE

500 NASSAU STREET SOUTH, VENICE, FLORIDA

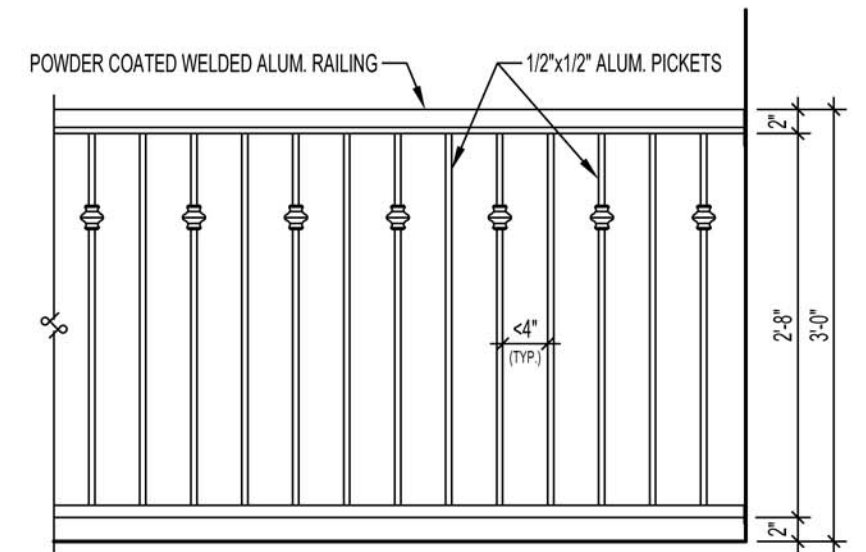
UPPER FLOOR PLAN

Scale: 1/8" = 1'-0"
Date:08.06.25



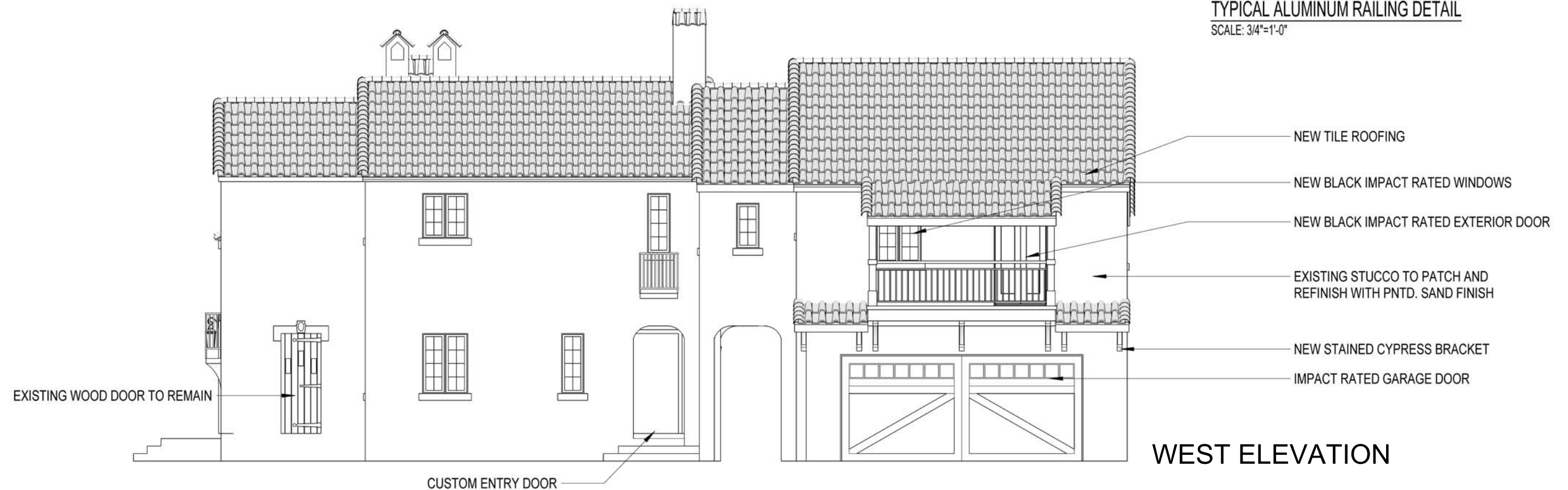
NORTH ELEVATION

- Body - Warm Peach (SW6338)
- Doors & Trim - French Roast (SW6069)



TYPICAL ALUMINUM RAILING DETAIL

SCALE: 3/4"=1'-0"

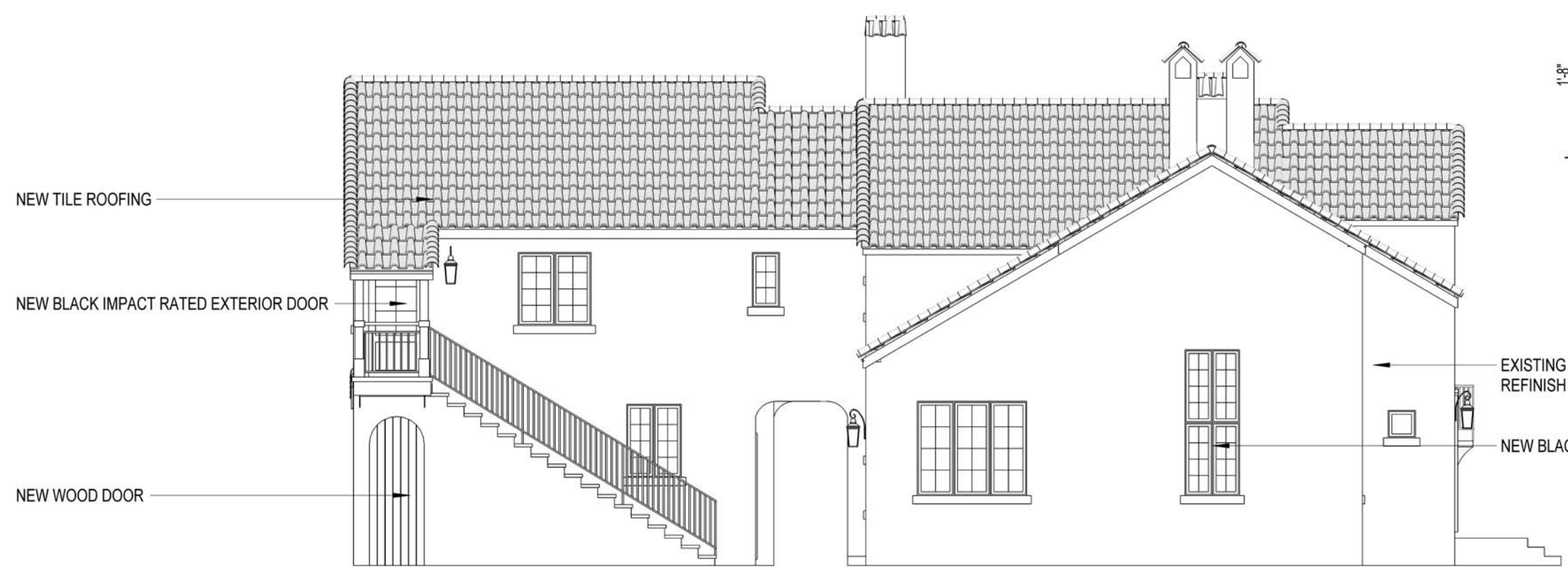
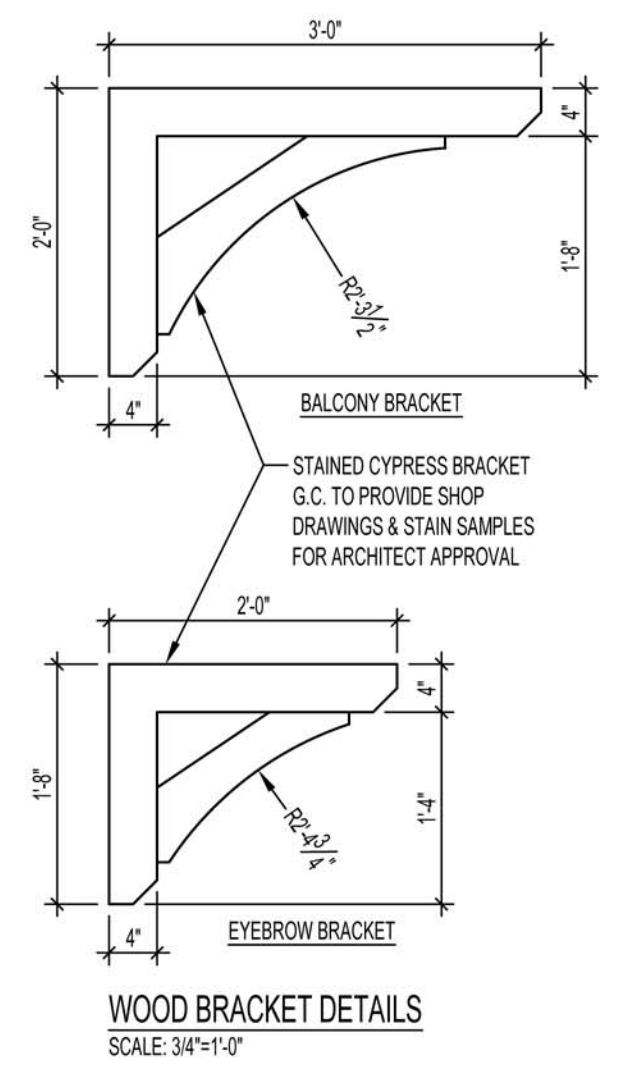


WEST ELEVATION

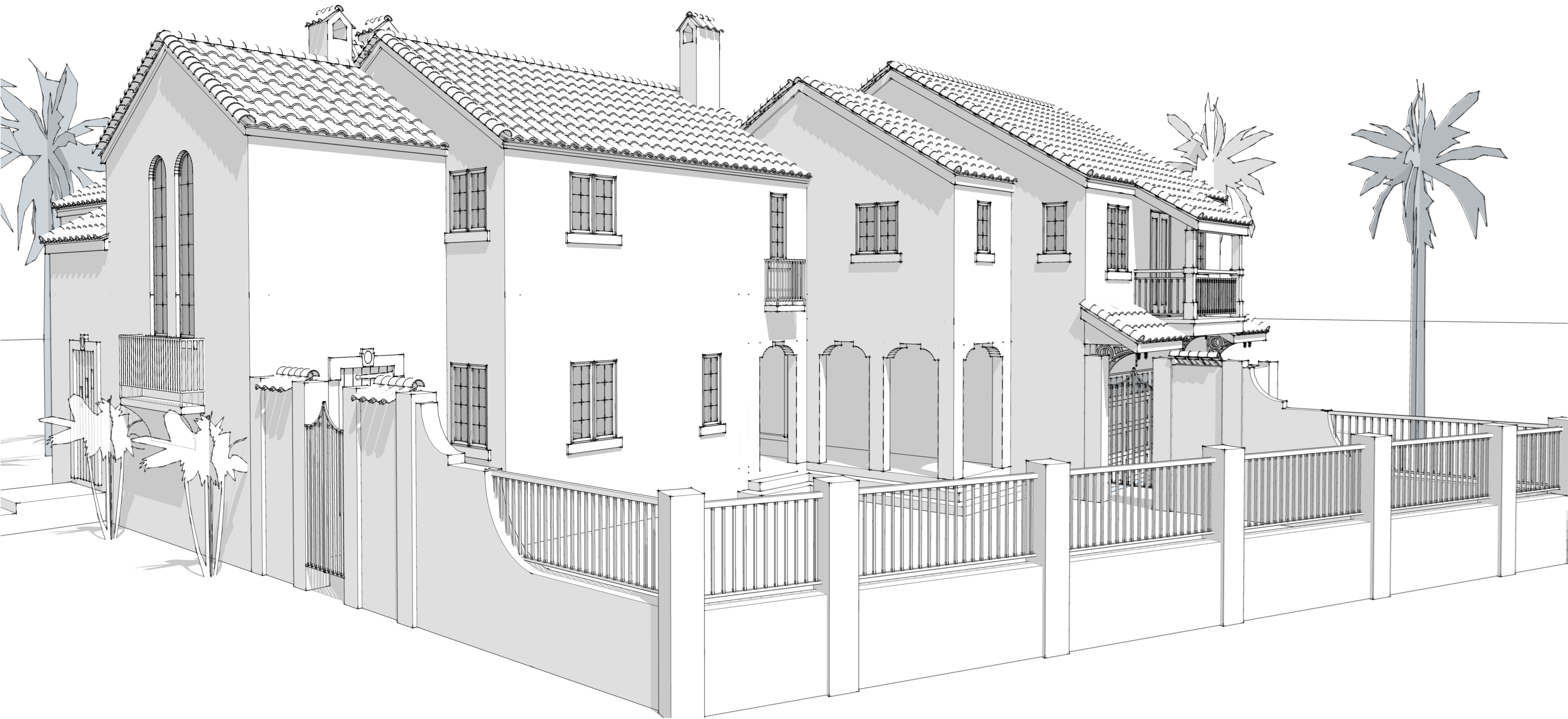


SOUTH ELEVATION

- Body - Warm Peach (SW6338)
- Doors & Trim - French Roast (SW6069)



EAST ELEVATION



Property of Venice Museum and Arch.





HOME BUILT FROM DESIGN 6-A-62

SPANISH FOR THE TWO-STORY HOUSE

A studio living room, two different floor levels, and a downstairs bedroom make this distinctive among small houses

The design presented here incorporates much of the charm of the Spanish style. The living room is spacious and is handsomely executed, having a lofty beamed ceiling and exposed rafters. High above the broad fireplace is a small wrought iron balcony which opens from the second floor hall. At either side of the hearth are tall arched recesses for book shelves. Opposite the entrance door is a broad archway leading to the dining room. This is two steps above living room floor level. Beyond this archway are French doors leading to the terrace. A high transom above, divided into small lights as are the doors, brings this opening into scale with the size of the room. The windows on the other two sides of the room are also on the same generous scale.

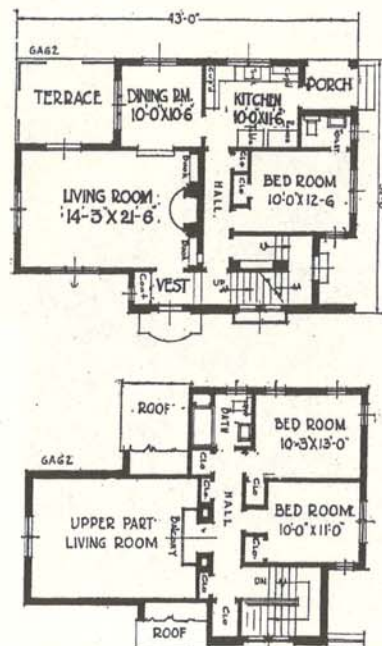
An attractive dining room, an efficient kitchen with cupboard and drawer space in abundance, several closets, and a bedroom with a lavatory opening from it complete the first floor. Two bedrooms, a bath and six capacious closets make up the second.

The exterior makes a distinguished appearance from every standpoint. The size, character, and spacing of the

openings give life and vivacity. The rich colors of the tile roof contrast superbly with the white stucco walls. The tall, narrow arched windows at the front are those which light the stairs, while the window to the left of the entrance door is that shown at one side of the living room. Above the latter is a broad band of gay tile, and similar bits of color have been used at other points to ornament the exterior.

Planned for a lot 50 feet or more in width, the house may also be turned with the narrow end to the street and be accommodated on a 40-foot lot. The owner of the house illustrated built the one-story structure to the right, also the high wall which surrounds the area in front of it. This makes, in effect, a patio. There is no basement under the living room, but the remaining space is sufficiently large to include the usual laundry, fuel and heater rooms, and an ample storage closet for fruit and vegetables.

Construction: Hollow tile walls, stucco finish, tile roof.





Bellagio™ 16 1/2" High Downbridge Black Outdoor Light - Style # 49276

^ OTHER OPTIONS



\$89.99

Compare \$134.99

FREE SHIPPING & **FREE RETURNS*** | [Low Price Guarantee](#)

1

ADD TO CART

ADD TO
WISH LIST

[In Stock - Ships in 1 to 2 Days](#)



PRINT

EMAIL

CHAT

MOST POPULAR ★★★★★ 30 Reviews | 8 Questions, 50 Answers

Inspired by the Italian town, this charming outdoor down light is from John Timberland®.

MORE DETAILS >



MORE YOU MAY LIKE



\$89.99



\$89.99



\$99.99



\$99.99



\$69.99

PRODUCT DETAILS

Bring luxury home with this charming outdoor wall light from John Timberland®. It features a textured black finish with clear hammered glass for a sophisticated look. Down bridge arm lends the piece a light, refined look.

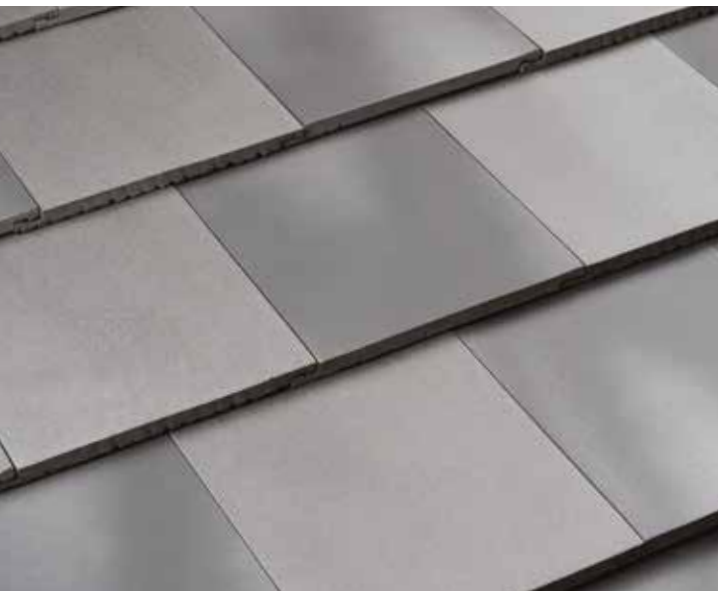


[Shop all John Timberland](#)

Check size & position before you buy! [Printable Life-Size Image](#)

- 16 1/2" high x 7" wide. Extends 9 3/4" from the wall. Backplate is 6 3/4" high x 4 3/4" wide. Weighs 3.21 lbs.
- Takes one 60 watt A15 base bulb (incandescent, LED, or CFL). Bulb not included.
- Traditional outdoor wall light from the John Timberland brand.
- Decorative top arm with beading and leaf accents.
- Cast aluminum and clear hammered glass construction, textured black finish.
- Wet location outdoor rated.

RELATED VIDEOS



CLAY ROOF TILES



CURVED MISSION BARREL

T₅ Red Clay

Dimensions*

A:19.69"; B:8.66"; C:6.41"

Pieces / sq 168

Weight piece 5.62 lbs

Weight pallet 1545,4 lbs

Units per pallet 275

*The Tile dimensions indicated in this chart, allow a tolerance of approximately 2%



RED

T5R



JASPEE RED

T5J



HISPANIA

T5H



GALIA

T5V



TOSSAL

T5O



AITANA

T5I



LUCENTUM

T5L



CASTELL

T5CS



BROWN

T5M



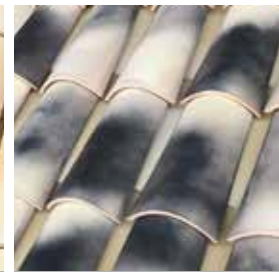
MILENIUM

T5MI



PAJA

T5P



FLAMED PAJA

T5E

The name of the colors shown in the pictures, only represent the finishes of the models identified as Curved Mission Barrel.



ARTISAN BLEND

Dimensions

L: 18"; W: 7"- 9"; H: 3"

Pieces / sq

180

Weight piece

6.8 lbs

Pieces/pallet*

570 (*Quantity may vary)



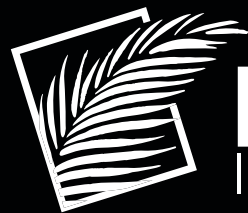
COLORS



SANTAFÉ TILE CORPORATION

8825 NW 95th Street, Medley, Florida 33178 USA • Phone: 305-885-9002 / 1-888-305-TILE (8453)

www.santafetile.com / Email: info@santafetile.com



Palm City
IRONWORKS

— URBAN • MILANO • WROUGHT IRON —





TIMELESS AESTHETICS

Since the 1850s, doors and windows have been made from hot-rolled steel. Featured throughout big cities in many historic buildings, steel doors and windows have become incredibly popular in contemporary architecture.

Steel doors and windows offer superior benefits over traditional aluminum or wood;

- 3x stronger than aluminum and 16x stronger than wood
- Superior strength for inclement weather
- Easily customizable
- Narrow sight lines and maximized glass area allow for more natural light
- Best long-term value
- Perfect for replication on historic renovations



DURABLE MATERIALS

HOT-ROLLED STEEL PROFILES are extruded from a single piece of steel to provide strength and durability.

COLD-ROLLED STEEL PROFILES are shaped by joining formed profiles with a thermal barrier material to provide enhanced energy performance.

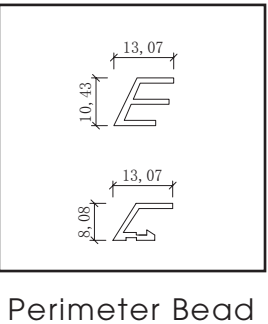
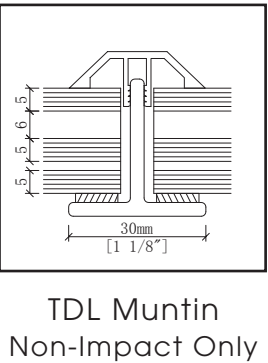
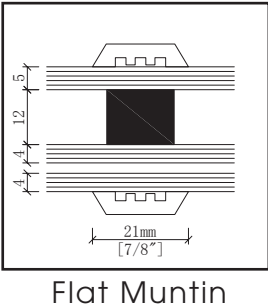
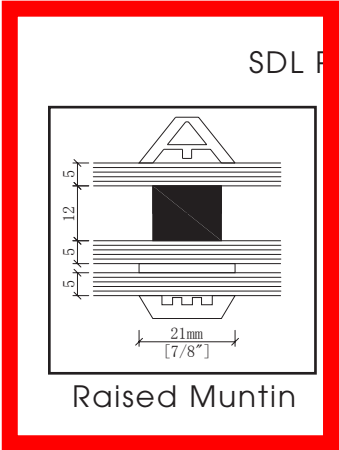
TUBULAR IRON PROFILES use 12 gauge tubular profiles which allow for complete customization while maintaining strength and durability.



FINISHES

Our product lines give you the freedom to express personal style.
From finish color to hardware, the details are in your control.

GRILL STYLE



SELECT YOUR FINISH

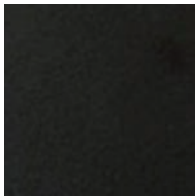
*Before placing your order, please confirm with physical color chip



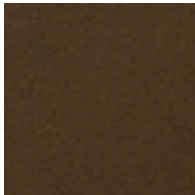
*Black



*Slate



*Bronze



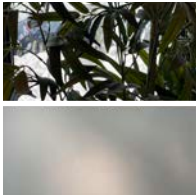
*Mocha

GLASS OPTIONS

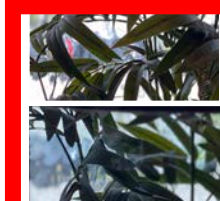
Available in both impact and non-impact



Standard
Low E



Frosted



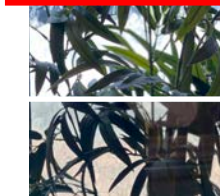
Solarban 70
(Energy Efficient)



Gray



Bronze



Reflective Blue



ALL DOORS ARE SHOWN PRE-FINISHED

RUSTIC SERIES

Hold your horses everyone, because you've got to see the breathtaking countrylike doors that Plastpro's Rustic Series has to offer. This series is far from ordinary. Its distinct panel details, beautifully crafted vertical planks, and arched and radius panels deliver a warm and homey sensation to any entryway. Our Rustic Doors' dark and smooth features also add a touch of modernness while embracing sweet southern hospitality. For those wanting to magnify the vintage look, this series also includes a line of wrought iron accessories for further customization, one can't help but observe.

RUSTIC GRAIN

● IN STOCK ● EXTENDED LEAD TIME

COACHMAN[®]

garage doors

4-LAYER CONSTRUCTION



America's Favorite Garage Doors[®]



*Model CGU/CG/CD12 with ARCH3 Windows.
Shown with Sandtone Steel Base
and Standard White Composite Overlays;
Standard Spade Handles and Step Plates.*

Model CGU/CG/CD21 with ARCH3 Windows.
Shown with Standard White Steel Base and
Standard White Composite Overlays;
Standard Spade Handles and Step Plates.

Series TWO

SERIES TWO of Coachman complements homes with American Country flair. With full or half crossbuck panels and your choice of rectangular, square or arched window styles, it's a classic style that looks as good with Irish Country Pine as it does with Texas Hill Country Chic.

SERIES TWO DESIGNS

	TOP11 (Solid)	TOP12 (Solid)	TOP13 (Solid)	ARCH1 (Solid)	ARCH1 Window	ARCH3 Window	ARCH4 Window	ARCH13 Window	ARCH14 Window	SQ23 Window	SQ24 Window	REC11 Window	REC13 Window	REC14 Window
CGU CG CD 21														
	TOP11 (Solid)	TOP12 (Solid)	TOP13 (Solid)	ARCH1 (Solid)	ARCH1 Window	ARCH3 Window	ARCH4 Window	ARCH13 Window	ARCH14 Window	SQ23 Window	SQ24 Window	REC11 Window	REC13 Window	REC14 Window
CGU CG CD 22														
	TOP11 (Solid)	TOP12 (Solid)	TOP13 (Solid)	ARCH1 (Solid)	ARCH1 Window	ARCH3 Window	ARCH4 Window	ARCH13 Window	ARCH14 Window	SQ23 Window	SQ24 Window	REC11 Window	REC13 Window	REC14 Window
CGU CG CD 23														

9' wide x 7' high; shown with Sandtone base and Standard White overlays. Consult your Clopay Dealer or clopay.com for additional sizes.