



GENERAL NOTES:

1. OWNERSHIP AND UNIFIED CONTROL STATEMENT:
THE PROPOSED PROJECT IS OWNED BY: SEE LISTINGS IN CENTER OF PAGE

2. CHARACTER AND INTENDED USE, STATEMENT:
THE PROPOSED USE IS A 63 UNIT SINGLE FAMILY RESIDENTIAL SUBDIVISION.

3. MAINTENANCE OF COMMON FACILITIES STATEMENT:
THE TOSCANA ISLES HOME OWNERS ASSOCIATION SHALL BE RESPONSIBLE FOR THE MAINTENANCE OF THE STORMWATER MANAGEMENT SYSTEM AND ROADS. THE WATER DISTRIBUTION SYSTEM WILL BE TURNED OVER TO THE CITY OF VENICE FOR OWNERSHIP AND MAINTENANCE. THE SANITARY SEWER SYSTEM WILL BE TURNED OVER TO SARASOTA COUNTY FOR OWNERSHIP AND MAINTENANCE.

4. EXISTING LAND USE: VACANT

5. ZONING: PUD, FUTURE LAND USE: MIXED USE RESIDENTIAL, PLANNING AREA "C"

6. FLOOD ZONE: THE SITE LIES WITHIN THE BOUNDARIES OF FLOOD ZONE A12, B & C PER FIRM MAP 125144024S D

7. SETBACKS:

PUD SUBAREA 1 - LOW DENSITY SINGLE FAMILY RESIDENTIAL:
MAXIMUM BUILDING HEIGHT: TWO STORES UP TO 35'

MAXIMUM BUILDING LOT COVERAGE = 40%

SINGLE FAMILY DWELLING MINIMUM YARD REQUIREMENTS:

FRONT YARD: 15' MIN. SETBACK

DRIVEWAY LENGTH: 20' MIN.

SIDE YARD: 5'

REAR YARD: 10' (5' TO ACCESSORY STRUCTURES)

PUD SUBAREA 2 - LOW DENSITY MIXED RESIDENTIAL:
MAXIMUM BUILDING HEIGHT: THREE STORES UP TO 42'

MAXIMUM BUILDING LOT COVERAGE = 40%

SINGLE FAMILY DWELLING MINIMUM YARD REQUIREMENTS:

FRONT YARD: 15' MIN. SETBACK

DRIVEWAY LENGTH: 20' MIN.

SIDE YARD: 5'

REAR YARD: 10' (5' TO ACCESSORY STRUCTURES)

MULTI-FAMILY DWELLING MINIMUM YARD REQUIREMENTS:

FRONT YARD: 15 FEET MINIMUM STRUCTURE, 20 FOOT MINIMUM DRIVEWAY LENGTH

SIDE YARD: 8 FEET, BUT IN NO CASE LESS THAN TWENTY (20) FEET BETWEEN STRUCTURES.

REAR YARD: 10 FEET, BUT IN NO CASE LESS THAN THIRTY (30) FEET BETWEEN STRUCTURES.

ALL MEASUREMENTS, INCLUDING DRIVEWAY LENGTHS, ARE TO BE MEASURED FROM THE PROPERTY LINE.

8. STORMWATER MANAGEMENT:

THIS DEVELOPMENT PROVIDES A MASTER STORMWATER MANAGEMENT SYSTEM. EACH LOT WITHIN THIS SUBDIVISION SHALL HAVE A MAXIMUM IMPERVIOUS AREA OF 80% PER LOT.

9. REFUSE AND RECYCLABLE NOTE:

REFUSE AND RECYCLABLES TO BE PICKED UP BY THE CITY OF VENICE AND SHALL BE PICKED UP CURBSIDE.

10. UTILITY NOTES:

A. DEP WATER, WASTEWATER, CITY OF VENICE UTILITIES AND SARASOTA COUNTY UTILITY CONSTRUCTION PERMITS ARE REQUIRED.

B. SANITARY SEWER CONSTRUCTION SHALL BE IN ACCORDANCE WITH THE SARASOTA COUNTY UTILITY CODE.

C. WATER DISTRIBUTION CONSTRUCTION SHALL BE IN ACCORDANCE WITH THE CITY OF VENICE UTILITY CODE.

D. THE CONTRACTOR SHALL CONTACT "BURIED STATE" ONE CALL, FPL AND ALL OTHER UTILITY COMPANIES PRIOR TO ANY WORK ON SITE OR OFF SITE SO THAT THE EXACT LOCATION OF ALL UTILITIES CAN BE DETERMINED.

E. TO THE BEST OF OUR KNOWLEDGE THERE ARE NO WELLS LOCATED ON THIS SITE.

F. ANY WELLS DISCOVERED DURING EARTH MOVING, EXCAVATION OR CONSTRUCTION MUST BE REPORTED TO THE ENVIRONMENTAL ENGINEERING DEPARTMENT WITHIN 24 HOURS OF DISCOVERY. IF SAID WELL HAS NO USE IT SHALL BE PLUGGED BY A LICENSED WELL DRILLING CONTRACTOR IN AN APPROVED MANNER.

G. TO THE BEST OF OUR KNOWLEDGE NO SEPTIC TANKS ARE LOCATED ON THIS SITE

H. ALL UTILITIES INCLUDING TELEPHONE, TELEVISION CABLE AND ELECTRICAL SYSTEMS SHALL BE INSTALLED UNDERGROUND.

I. ALL IMPROVEMENTS SHALL BE CONSTRUCTED IN ACCORDANCE WITH THE LATEST VERSION OF THE CITY OF VENICE STANDARDS DETAILS.

J. THE ENGINEER OR SURVEYOR, WITH INFORMATION PROVIDED BY THE CONTRACTOR, SHALL PROVIDE RECORD DRAWINGS THAT MEET THE REQUIREMENTS OF THE SARASOTA COUNTY UNIFORM WATER, WASTEWATER AND RECLAIMED WATER CODE, LATEST EDITION.

11. UTILITY PROVIDERS:

WATER: CITY OF VENICE
VENICE, FL 34208
(941)486-3333
(941)486-3334 fax
(941)661-0653 fax

SANITARY SEWER: PROVIDED BY SARASOTA COUNTY
1001 SARASOTA BLVD.
SARASOTA, FL 34231
(941)486-6198
(941)661-0653 fax

TELEPHONE: FRONTIER
5500 SWIFT RD.
SARASOTA, FL 34231
(877)691-6198

ELECTRICITY: FLORIDA POWER & LIGHT
5676 S. MANOTSA RD.
SARASOTA, FL 34233
(941)927-4218

CITY COMCAST
5209 FRUITVILLE ROAD
SARASOTA, FL 34240
(941) 371-6700

12. BENCHMARK DATUM:

BENCHMARK: 44 ENG BM#2201

ELEV: 15.54

NELUS 1229

CIRCLED SQUARE CENTERED ON WEST SIDE

OF CONCRETE SLAB FOR MET WELL AT LIFT STATION.

13. DATUM:

A. ALL SITE ELEVATIONS ARE SHOWN IN NGD 29 DATUM

B. TO CONVERT TO NAVD 88 A VERTICAL SHIFT OF -1.109 SHOULD BE APPLIED

14. PARCEL ID'S:

TRACT 15 0375-04-0001

TRACT 16 0366-13-0003

15. CITY OF VENICE REQUIRED NOTES:

1. ALL WORK CONDUCTED IN THE CITY OF VENICE RIGHT-OF-WAY (ROW) WILL REQUIRE ISSUANCE OF A ROW PERMIT.

2. ALL WORK CONDUCTED IN SARASOTA COUNTY AND/OR FOOT ROW SHALL REQUIRE A COPY OF THE ISSUED PERMITS.

3. PROJECT AREA PREVIOUS CLEARED UNDER AND SUBJECT TO SARASOTA COUNTY TREE PERMIT #14 142582 00 RT.

4. POST DEVELOPMENT RUNOFF DOES NOT EXCEED PRE-DEVELOPMENT RUNOFF VOLUME OR RATE FOR A 24-HOUR, 25-YEAR STORM EVENT.

5. FIRE SERVICE BACKFLOW ASSEMBLIES SHALL BE INSTALLED BY A CERTIFIED CONTRACTOR WITH A CLASS 1, 11 OR V

CERTIFICATE OF COMPETENCY ISSUED BY THE STATE FIRE MARSHALL AS PER F.S. 633.521.

6. CONSTRUCTION SITE MUST BE POSTED WITH 24-HOUR CONTACT INFORMATION.

7. ALL UTILITIES, WHETHER PUBLIC OR PRIVATE, SHALL MEET CITY OF VENICE STANDARDS.

8. CONTACT PUBLIC WORKS SOLID WASTE DIVISION (941-486-2422) FOR APPROVAL OF DUMPSTER LOCATION AND LAYOUT PRIOR TO CONSTRUCTION.

9. NO MINIMUM LOT DIMENSIONS ARE REQUIRED BY THE PUD. FINAL LOT DIMENSIONS WILL BE INCLUDED ON THE FINAL PLAN.

10. ALL MEASUREMENTS, INCLUDING DRIVEWAY LENGTHS, ARE TO BE MEASURED FROM THE PROPERTY LINE.

11. A TREE PERMIT WILL BE REQUIRED PRIOR TO ANY CONSTRUCTION, NATIVE VEGETATIVE REMOVAL WITHIN THE DRILLPIE OF A TREE, AND/OR TREE REMOVAL.

12. LAND IN A PUD DESIGNATED AS OPEN SPACE WILL BE RESTRICTED BY APPROPRIATE LEGAL INSTRUMENT SATISFACTORY TO THE CITY ATTORNEY AS OPEN SPACE PERPETUALLY, OR FOR A PERIOD OF NOT LESS THAN 99 YEARS. SUCH INSTRUMENT SHALL BE BINDING UPON THE DEVELOPER, HIS SUCCESSOR AND ASSIGNS AND SHALL CONSTITUTE A COVENANT RUNNING WITH THE LAND, AND BE IN RECORDABLE FORM.

16. UTILITY QUANTITIES

WATERMAIN

8" DR 18 PVC WM LF 3,400

8" 22.5" BENDS LF 7

8" GATE VALVES LF 4

4" GATE VALVES EA 4

8"x4" HYD TEES EA 4

FIRE HYDRANTS EA 4

UTILITY PLANS RECORD DRAWINGS CITY OF VENICE WATER

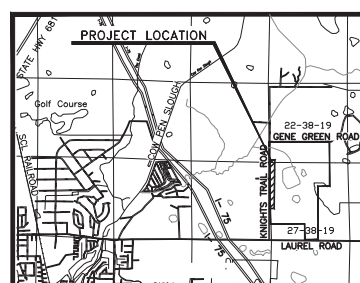
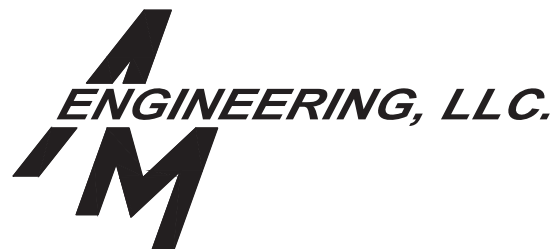
FOR

TOSCANA ISLES
UNIT II, PHASE 7

A 63 LOT SUBDIVISION LYING IN SECTION 22 AND 27,
TOWNSHIP 38 SOUTH, RANGE 19 EAST, CITY OF
VENICE, SARASOTA COUNTY, FLORIDA.

OWNER/ DEVELOPER:
TRACTS 15,16 - LALP DEVELOPMENT, LLC
6561 PALMER PARK CIRCLE, SUITE B
SARASOTA, FLORIDA 34238
(941) 552-6705

ENGINEER / SURVEYOR:
AM ENGINEERING, LLC.
8340 CONSUMER COURT
SARASOTA, FLORIDA 34240
(941) 377-9178
CERTIFICATE OF AUTHORIZATION No. 33105
LB # 4334



LOCATION MAP

LATITUDE: N027°20'54.77" LONGITUDE: W082°19'36.12"

RECORD DRAWING

INDEX TO SHEETS

SHEET NO.	DESCRIPTION
1	COVER SHEET
2	AERIAL PHOTOGRAPH
3	EXISTING PLATTED CONDITIONS
4	MASTER SITE PLAN
5	MASTER SIDEWALK, SIGNAGE, AND STRIPING PLAN
6-8	PRELIMINARY PLAT
9	STORMWATER MANAGEMENT PLAN
10-12	PAVING, GRADING & DRAINAGE PLAN
13-14	PAVING, GRADING & DRAINAGE DETAILS
15	STORMWATER POLLUTION PREVENTION PLAN
16	MASTER UTILITY PLAN
17	PLAN & PROFILE KEY SHEET
18	PLAN AND PROFILE (STA. 12+00 TO STA. 24+40)
18A	UTILITY PLAN SWING TIES (STA. 12+00 TO STA. 24+40)
19	PLAN AND PROFILE (STA. 24+40 TO STA. 36+40)
19A	UTILITY PLAN SWING TIES (STA. 24+40 TO STA. 36+40)
20	PLAN AND PROFILE (STA. 36+40 TO STA. 48+00)
20A	UTILITY PLAN SWING TIES (STA. 36+40 TO STA. 48+00)
21	LIFT STATION PLAN AND PROFILE - UTILITY PLAN SWING TIES
22A-22B	LIFT STATION PLAN AND DETAILS
23-24	WATER & SEWER DETAILS
25	CITY/COUNTY SANITARY SERVICE

SUPPLEMENTAL LIFT STATION DETAILS BY CEC MOTOR & UTILITY SERVICES:

MPC 00-04E	STANDARD FABRICATION PLANS AND CONTROL SCHEMATICS FOR SINGLE & THREE PHASE DUPLEX MTOR CONTROL PANELS AT WASTE WATER LIFT STATIONS
MRI 00-04	STANDARD INSTALLATION PLANS FOR DUPLEX MOTOR CONTROL PANEL (MCP) AND REMOTE TELEMETRY UNIT (RTU) FOR WASTE WATER LIFT STATIONS
RTU 00-94D	STANDARD FABRICATION PLANS FOR PLC REMOTE TELEMETRY UNIT (RTU) FOR DUPLEX WASTE WATER LIFT STATIONS

D.
Shawn
Leins

Digitally signed by
D. Shawn Leins
DN: c=US,
st=Florida,
l=Sarasota, o=AM
Engineering, LLC,
cn=D. Shawn Leins,
email=sleins@ame
ngfl.com
Date: 2021.02.26

D. SHAWN LEINS 3/5/2021 05:00

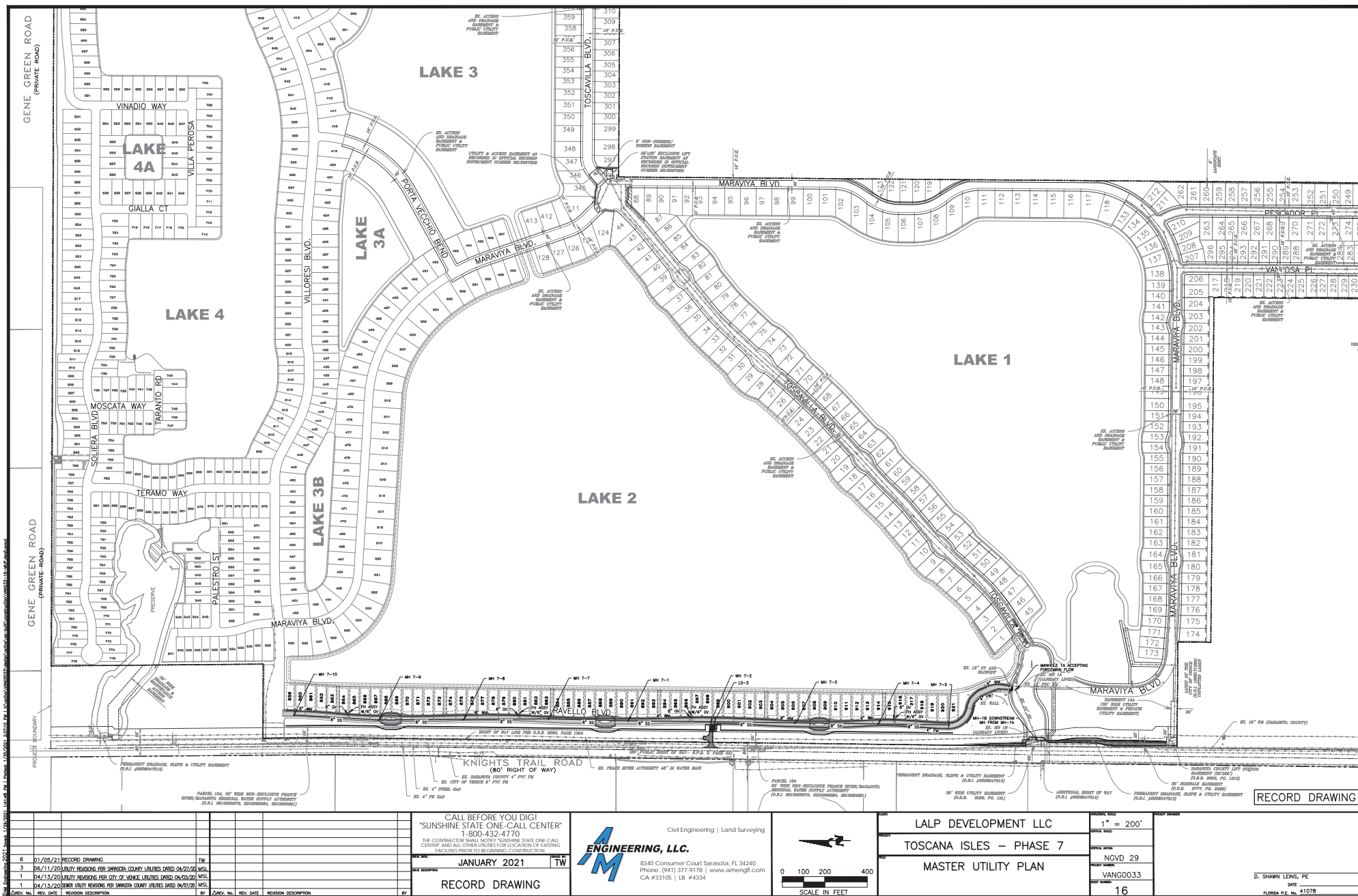
DATE

FLORIDA P.E. No. 41078



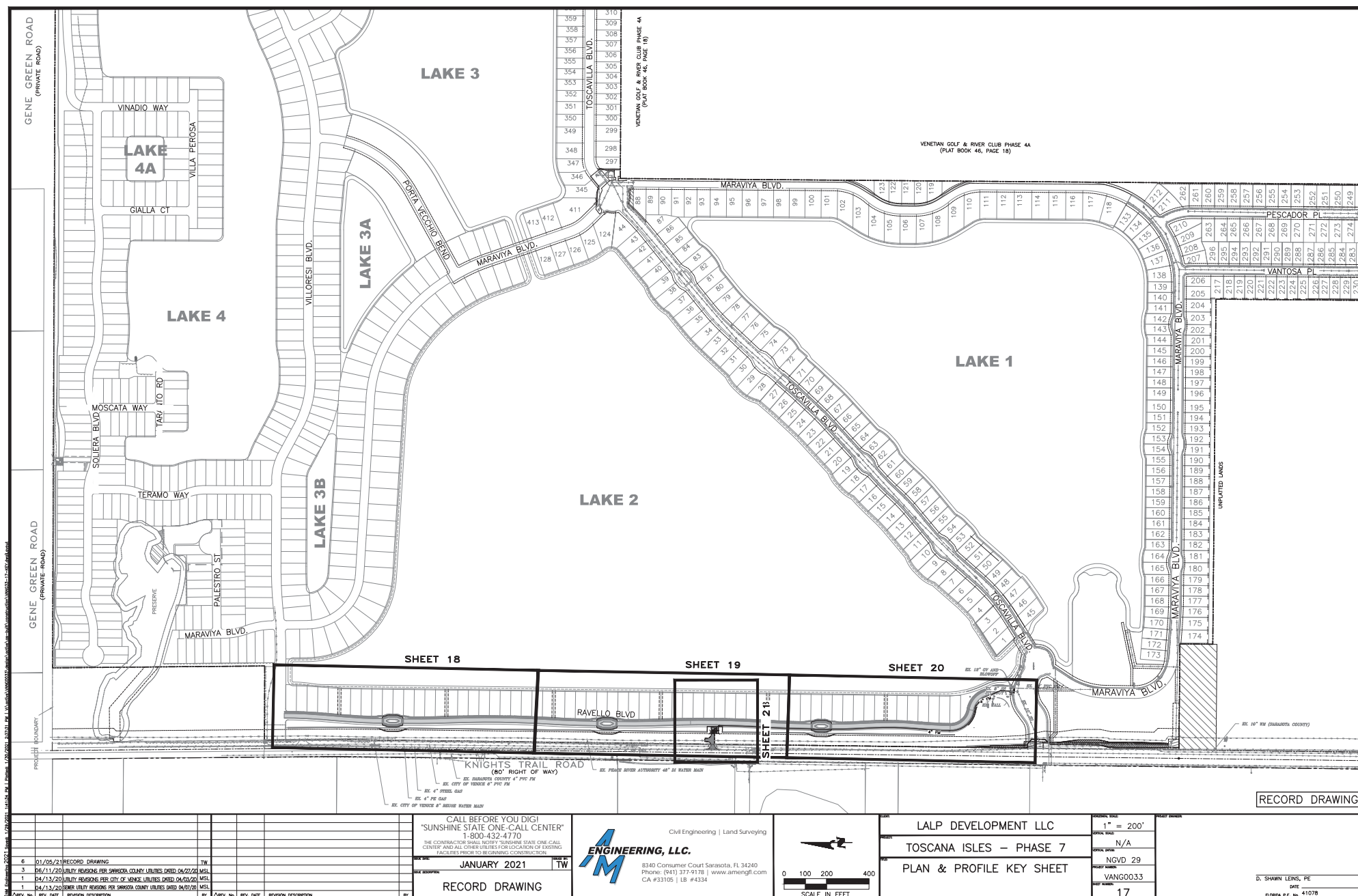
March 25, 2021

APPROVED



March 25, 2021

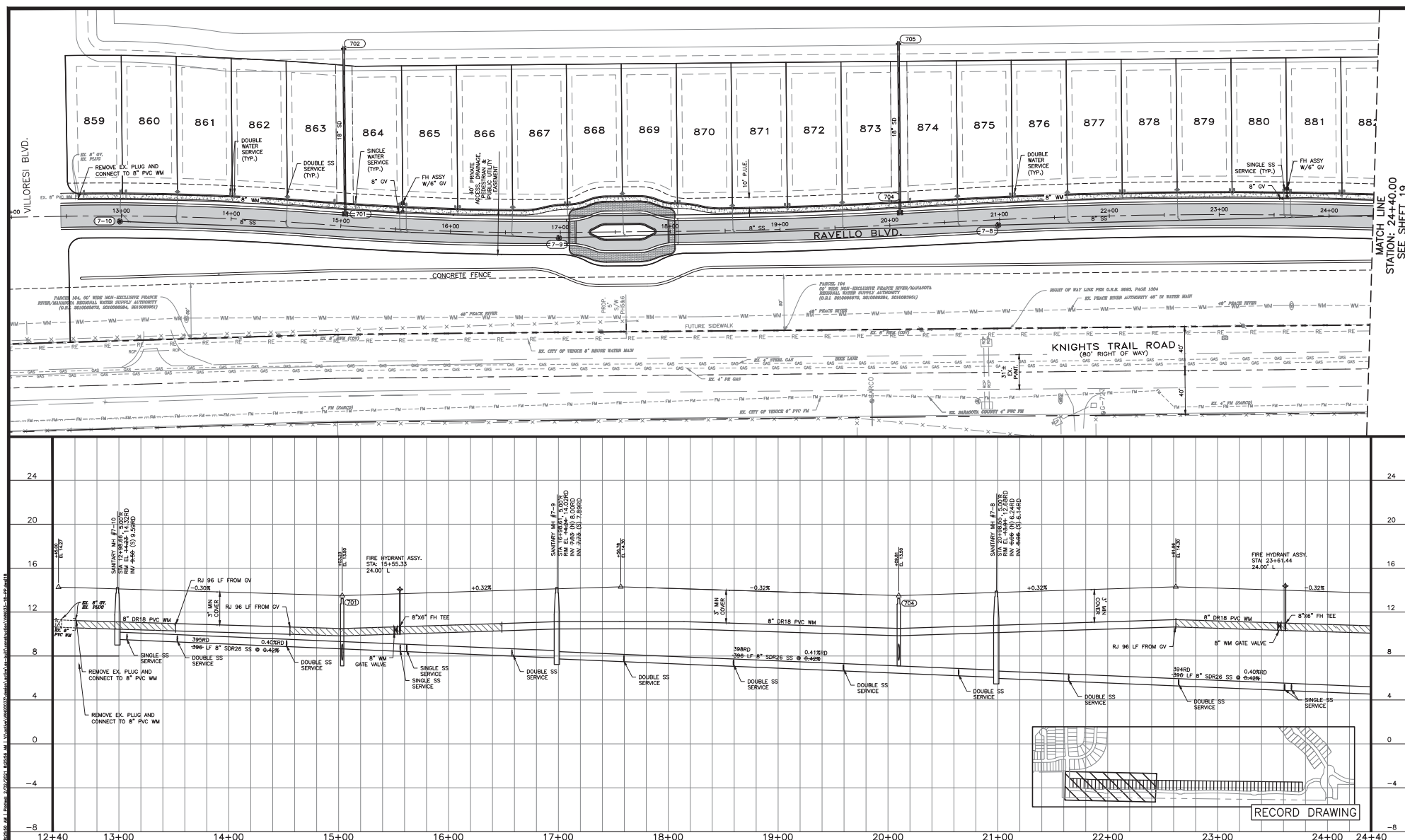
APPROVED





March 25, 2021

APPROVED



CALL BEFORE YOU DIG!
"SUNSHINE STATE ONE-CALL CENTER"
1-800-432-4770

THE CONTRACTOR SHALL NOTIFY "SUNSHINE STATE ONE-CALL CENTER" AND ALL OTHER UTILITIES FOR LOCATION OF EXISTING FACILITIES PRIOR TO BEGINNING CONSTRUCTION.

JANUARY 2021

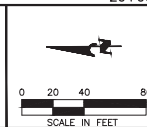
TW

RECORD DRAWING



Civil Engineering | Land Surveying

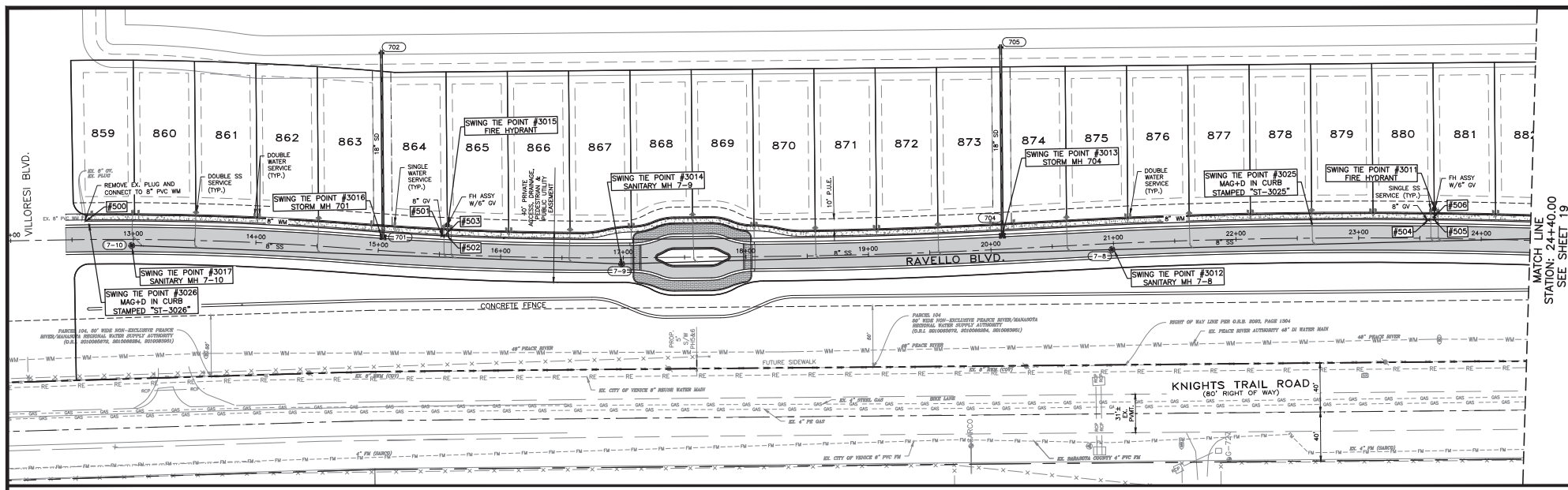
8340 Consumer Court Sarasota, FL 34240
Phone: (941) 377-9178 | www.amengrll.com
CA #33105 | LB #4334



LALP DEVELOPMENT LLC
TOSCANA ISLES - PHASE 7
PLAN & PROFILE

GRAPHIC SCALE
1" = 40'
1" = 4'
NGVD 29
VANG0033
18

D. SHAWN LEWIS, PE
DATE
FLORIDA P.E. No. 41078

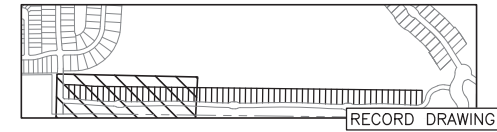


SWING TIE INFORMATION - WATER SERVICE LOCATION

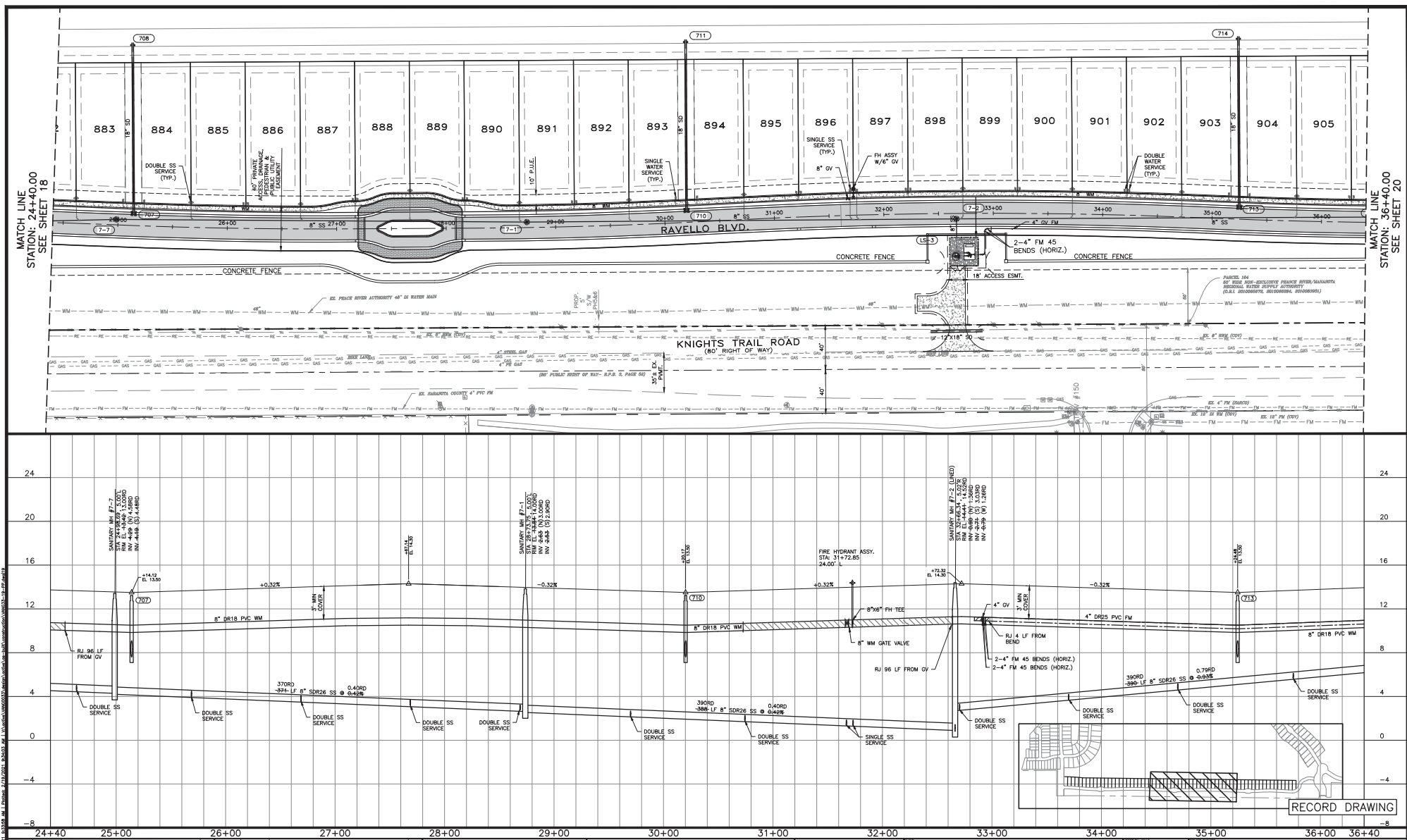
LOT #	SWING TIE POINT	DISTANCE	SWING TIE POINT	DISTANCE
859	3017 - SANITARY MH 7-10	42.9	3026 - MAG+D IN CURB	10.5
860	3017 - SANITARY MH 7-10	28.1	3026 - MAG+D IN CURB	40.3
861	3017 - SANITARY MH 7-10	102.5	3016 - STORM MH 701	106.3
862	3016 - STORM MH 701	102.5	3017 - SANITARY MH 7-10	106.3
863	3016 - STORM MH 701	15.5	3015 - FIRE HYDRANT	61.9
864	3016 - STORM MH 701	14.8	3015 - FIRE HYDRANT	43.0
865	3015 - FIRE HYDRANT	48.2	3014 - SANITARY MH 7-9	98.2
866	3015 - FIRE HYDRANT	52.1	3014 - SANITARY MH 7-9	94.5
867	3014 - SANITARY MH 7-9	33.5	3015 - FIRE HYDRANT	147.8
868	3014 - SANITARY MH 7-9	34.7	3015 - FIRE HYDRANT	151.9
869	3014 - SANITARY MH 7-9	111.2	3013 - STORM MH 704	204.7
870	3014 - SANITARY MH 7-9	115.2	3013 - STORM MH 704	200.7
871	3013 - STORM MH 704	104.6	3012 - SANITARY MH 7-8	195.8
872	3013 - STORM MH 704	100.7	3012 - SANITARY MH 7-8	192.0
873	3013 - STORM MH 704	14.9	3012 - SANITARY MH 7-8	102.4
874	3013 - STORM MH 704	15.5	3012 - SANITARY MH 7-8	84.5
875	3012 - SANITARY MH 7-8	27.5	3013 - STORM MH 704	101.9
876	3012 - SANITARY MH 7-8	29.5	3013 - STORM MH 704	105.8
877	3025 - MAG+D IN CURB	53.2	3012 - SANITARY MH 7-8	113.2
878	3025 - MAG+D IN CURB	49.4	3012 - SANITARY MH 7-8	117.2
879	3025 - MAG+D IN CURB	49.2	3011 - FIRE HYDRANT	51.6
880	3011 - FIRE HYDRANT	47.6	3025 - MAG+D IN CURB	53.1
881	3011 - FIRE HYDRANT	48.7	3025 - MAG+D IN CURB	148.2
882	3011 - FIRE HYDRANT	52.5	3025 - MAG+D IN CURB	152.2

SWING TIE INFORMATION-WATERMAIN

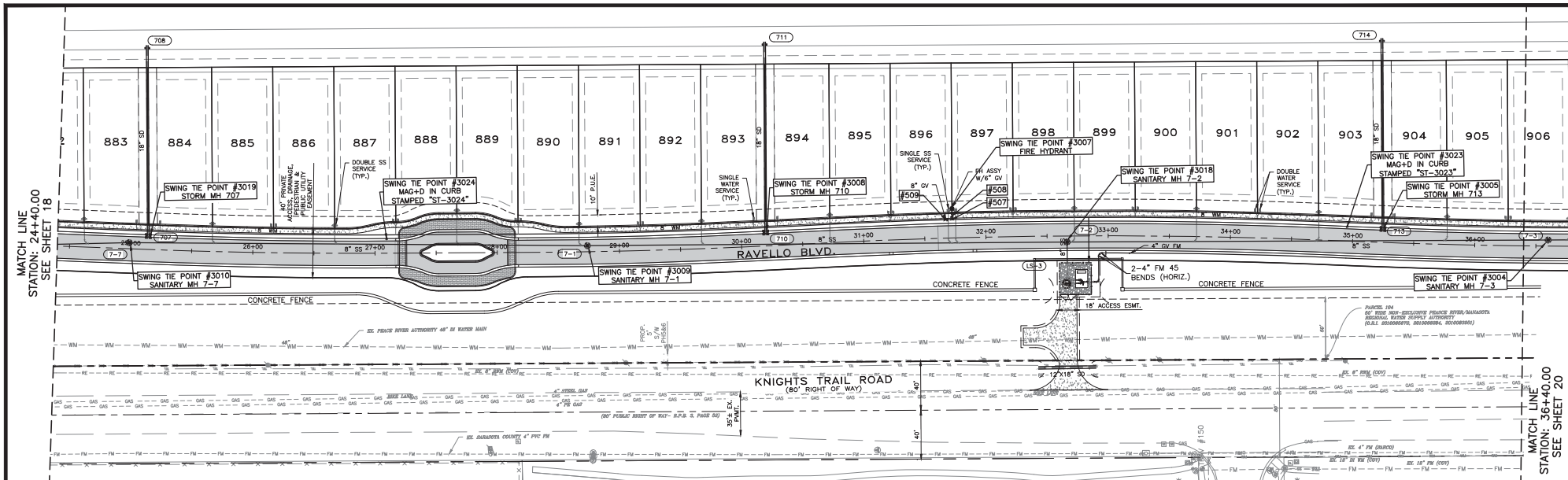
RM	SWING TIE POINT	DISTANCE	SWING TIE POINT	DISTANCE
500-GATE VALVE	3026 - MAG+D IN CURB	15.8	3017 - SANITARY MH 7-10	54.9
501-GATE VALVE	3015 - FIRE HYDRANT	10.6	3016 - STORM MH 701	47.2
502-TEE	3015 - FIRE HYDRANT	9.1	3016 - STORM MH 701	52.2
503-GATE VALVE	3015 - FIRE HYDRANT	6.6	3016 - STORM MH 701	52.3
504-GATE VALVE	3011 - FIRE HYDRANT	11.0	3025 - MAG+D IN CURB	93.9
505-TEE	3011 - FIRE HYDRANT	9.1	3025 - MAG+D IN CURB	99.5
506-GATE VALVE	3011 - FIRE HYDRANT	6.8	3025 - MAG+D IN CURB	99.7



6 01/05/21 RECORD DRAWING		TW	
2 05/12/20 UTILITY REVISIONS PER CITY OF VENICE UTILITIES DATED 06/08/20		CD	
1 04/13/20 UTILITY REVISIONS PER CITY OF VENICE UTILITIES DATED 04/09/20		MSL	
1 04/13/20 DRAIN UTILITY REVISIONS PER SARASOTA COUNTY UTILITIES DATED 04/09/20		MSL	
DATE	REV. DATE	REVISION DESCRIPTION	BY
RECORD DRAWING			
CALL BEFORE YOU DIG! "SUNSHINE STATE ONE-CALL CENTER" 1-800-432-4770 THE CONTRACTOR SHALL NOTIFY "SUNSHINE STATE ONE-CALL CENTER" AND ALL OTHERS CONCERNED FOR LOCATION OF EXISTING FACILITIES PRIOR TO BEGINNING CONSTRUCTION.			
JANUARY 2021 TW			
AM ENGINEERING, L.L.C.			
8340 Consumer Court Sarasota, FL 34240 Phone: (941) 377-9178 www.amengrll.com CA #33105 LB #43334			
Civil Engineering Land Surveying			
0 20 40 80 SCALE IN FEET			
LALP DEVELOPMENT LLC TOSCANA ISLES - PHASE 7 PLAN & PROFILE			
1"=40' N/A NGVD 29 VANG0033 18A			
D. SHAWN LEWIS, PE DATE FLORIDA P.E. No. 41078			



<p>6 01/05/21 RECORD DRAWING TW</p> <p>4 07/13/20 SARASOTA COUNTY UTILITY COMMENTS MSJ</p> <p>3 06/11/20 UTILITY REVISIONS PER SARASOTA COUNTY UTILITIES DATED 06/22/20 MSJ</p> <p>1 04/13/20 UTILITY REVISIONS PER CITY OF SARASOTA UTILITIES DATED 04/29/20 MSJ</p> <p>1 04/13/20 UTILITY REVISIONS PER SARASOTA COUNTY UTILITIES DATED 04/29/20 MSJ</p>		<p>BY: AM DATE: JANUARY 2021 TW</p> <p>RECORD DRAWING</p>		<p>CALL BEFORE YOU DIG! "SUNSHINE STATE ONE-CALL CENTER" 1-800-432-4770 THE CONTRACTOR SHALL NOTIFY "SUNSHINE STATE ONE-CALL CENTER" AND ALL OTHER UTILITIES FOR LOCATION OF EXISTING FACILITIES PRIOR TO BEGINNING CONSTRUCTION.</p>		<p>Civil Engineering Land Surveying</p> <p>AM ENGINEERING, L.L.C.</p> <p>8340 Consumer Court Sarasota, FL 34240 Phone: (941) 377-9178 www.amengrllc.com CA #33105 LB #4334</p>		<p>1" = 40'</p> <p>1" = 4'</p> <p>NGVD 29</p> <p>VANG0033</p> <p>19</p>		<p>D. SHAWN LEINS, PE</p> <p>DATE</p> <p>FLORIDA P.E. No. 41078</p>	
------------------------------------------------------------------------------------------------------------------------------------------------------------------------------------------------------------------------------------------------------------------------------------------------------------------------------------------------------------	--	--------------------------------------------------------------------------------	--	---------------------------------------------------------------------------------------------------------------------------------------------------------------------------------------------------------------------------------------------------	--	-----------------------------------------------------------------------------------------------------------------------------------------------------------------------------------------------------	--	-------------------------------------------------------------------------	--	---------------------------------------------------------------------	--



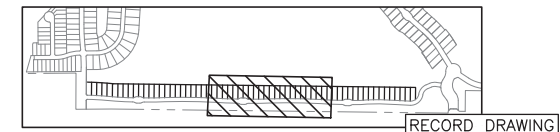
SWING TIE INFORMATION-WATER & SANITARY SEWER SERVICES

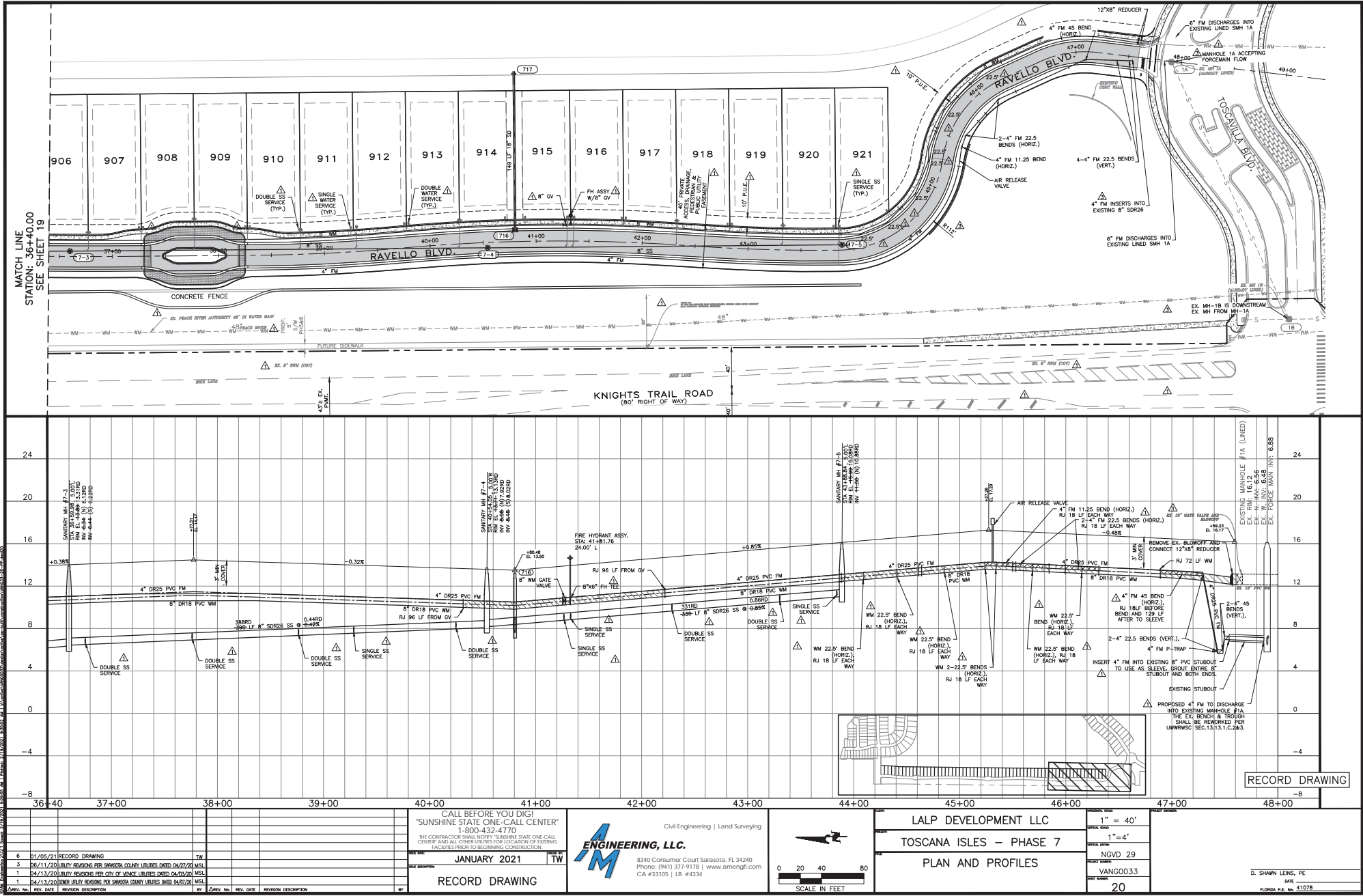
WATER SERVICE LOCATION

LOT #	SWING TIE POINT	DISTANCE	SWING TIE POINT	DISTANCE
883	3019 - STORM MH 707	15.2	3010 - SANITARY MH 7-7	18.9
884	3019 - STORM MH 707	15.3	3010 - SANITARY MH 7-7	31.3
885	3024 - MAG+D IN CURB	95.2	3019 - STORM MH 707	100.8
886	3024 - MAG+D IN CURB	91.2	3019 - STORM MH 707	104.9
887	3024 - MAG+D IN CURB	17.0	3009 - SANITARY MH 7-1	159.5
888	3024 - MAG+D IN CURB	18.5	3009 - SANITARY MH 7-1	155.5
889	3009 - SANITARY MH 7-1	62.3	3024 - MAG+D IN CURB	106.7
890	3009 - SANITARY MH 7-1	58.6	3024 - MAG+D IN CURB	110.7
891	3009 - SANITARY MH 7-1	46.5	3008 - STORM MH 710	104.4
892	3009 - SANITARY MH 7-1	50.3	3008 - STORM MH 710	100.5
893	3008 - STORM MH 710	14.5	3009 - SANITARY MH 7-1	139.3
894	3008 - STORM MH 710	16.3	3007 - FIRE HYDRANT	142.8
895	3007 - FIRE HYDRANT	51.8	3008 - STORM MH 710	102.2
896	3007 - FIRE HYDRANT	47.9	3008 - STORM MH 710	106.1
897	3007 - FIRE HYDRANT	48.2	3018 - SANITARY MH 7-2	54.4
898	3018 - SANITARY MH 7-2	50.9	3007 - FIRE HYDRANT	52.2
899	3023 - MAG+D IN CURB	176.1	3018 - SANITARY MH 7-2	60.3
900	3023 - MAG+D IN CURB	172.1	3018 - SANITARY MH 7-2	63.6
901	3023 - MAG+D IN CURB	76.5	3005 - STORM MH 713	105.8
902	3023 - MAG+D IN CURB	72.7	3005 - STORM MH 713	101.9
903	3005 - STORM MH 713	15.2	3023 - MAG+D IN CURB	21.9
904	3005 - STORM MH 713	15.0	3023 - MAG+D IN CURB	40.2
905	3004 - SANITARY MH 7-3	39.7	3005 - STORM MH 713	100.8
906	3004 - SANITARY MH 7-3	36.1	3005 - STORM MH 713	104.6

SWING TIE INFORMATION-WATERMAIN

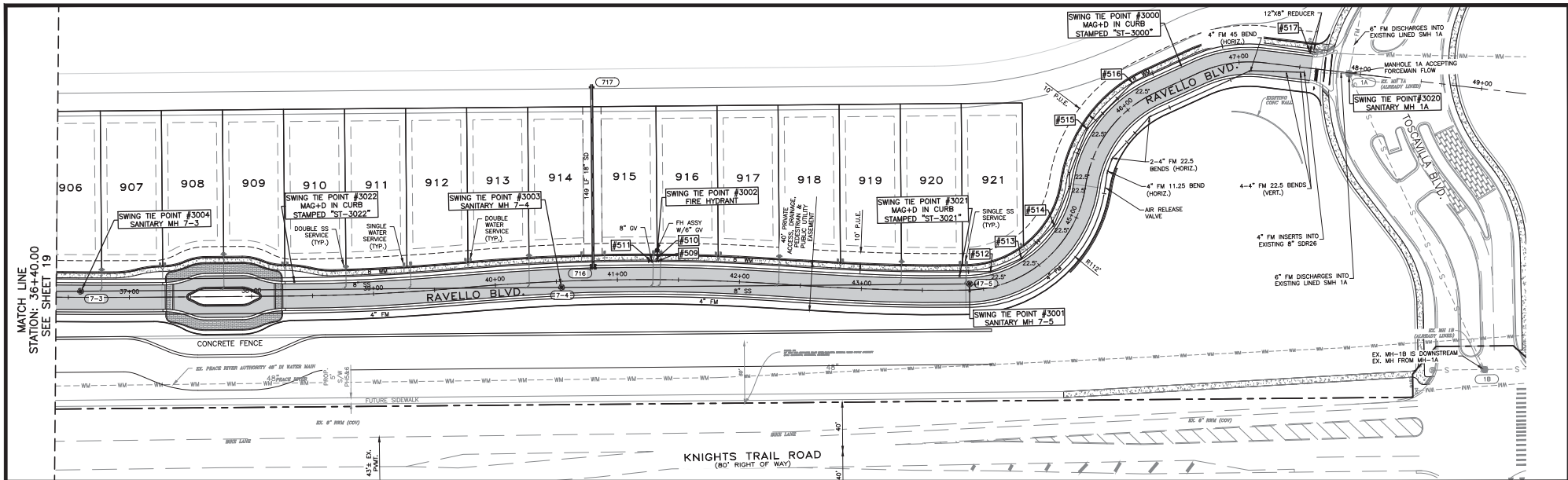
DESCRIPTION	SWING TIE POINT	DISTANCE	SWING TIE POINT	DISTANCE
507 - TEE	3007 - FIRE HYDRANT	8.9	3018 - SANITARY MH 7-2	96.8
508 - GATE VALVE	3007 - FIRE HYDRANT	6.1	3018 - SANITARY MH 7-2	97.0
509 - GATE VALVE	3007 - FIRE HYDRANT	5.0	3018 - SANITARY MH 7-2	98.8





6 01/05/21 RECORD DRAWING TW
 3 06/11/20 UTILITY REVISIONS PER SARASOTA COUNTY UTILITIES DATED 06/22/20 MSL
 1 04/13/20 UTILITY REVISIONS PER CITY OF SARASOTA UTILITIES DATED 04/09/20 MSL
 1 04/13/20 DRAIN UTILITY REVISIONS PER SARASOTA COUNTY UTILITIES DATED 04/09/20 MSL

DATE REV. DATE REVISION DESCRIPTION BY



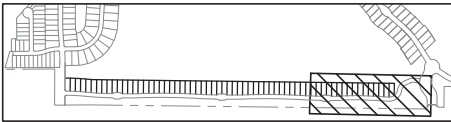
SWING TIE INFORMATION-WATER & SANITARY SEWER SERVICES

WATER SERVICE LOCATION

LOT #	SWING TIE POINT	DISTANCE	SWING TIE POINT	DISTANCE
907	3004 - SANITARY MH 7-3	68.9	3022 - MAG+D IN CURB	118.4
908	3004 - SANITARY MH 7-3	72.4	3022 - MAG+D IN CURB	106.7
909	3022 - MAG+D IN CURB	18.5	3004 - SANITARY MH 7-3	166.3
910	3022 - MAG+D IN CURB	16.9	3004 - SANITARY MH 7-3	170.0
911	3022 - MAG+D IN CURB	91.6	3003 - SANITARY MH 7-4	128.5
912	3003 - SANITARY MH 7-4	80.5	3022 - MAG+D IN CURB	141.5
913	3003 - SANITARY MH 7-4	76.6	3022 - MAG+D IN CURB	145.4
914	3003 - SANITARY MH 7-4	32.9	3002 - FIRE HYDRANT	62.8
915	3002 - FIRE HYDRANT	43.3	3003 - SANITARY MH 7-4	46.5
916	3002 - FIRE HYDRANT	47.9	3003 - SANITARY MH 7-4	130.7
917	3002 - FIRE HYDRANT	51.6	3003 - SANITARY MH 7-4	134.4
918	3021 - MAG+D IN CURB	100.4	3001 - SANITARY MH 7-5	109.3
919	3021 - MAG+D IN CURB	96.5	3001 - SANITARY MH 7-5	105.5
920	3021 - MAG+D IN CURB	11.0	3001 - SANITARY MH 7-5	19.2
921	3001 - SANITARY MH 7-5	53.1	3021 - MAG+D IN CURB	56.1

SWING TIE INFORMATION-WATERMAIN

RM	SWING TIE POINT	DISTANCE	SWING TIE POINT	DISTANCE
509-TIE	3002 - FIRE HYDRANT	9.2	3003 - SANITARY MH 7-4	82.4
510-GATE VALVE	3002 - FIRE HYDRANT	6.3	3003 - SANITARY MH 7-4	83.5
511-GATE VALVE	3002 - FIRE HYDRANT	10.7	3003 - SANITARY MH 7-4	77.7
512-BEND	3001 - SANITARY MH 7-5	20.1	3021 - MAG+D IN CURB	25.4
513-22.5	3001 - SANITARY MH 7-5	46.3	3021 - MAG+D IN CURB	51.4
514-22.5	3001 - SANITARY MH 7-5	84.5	3021 - MAG+D IN CURB	87.9
515-22.5	3000 - MAG+D IN CURB	92.9	3021 - MAG+D IN CURB	159.5
516-22.5	3000 - MAG+D IN CURB	42.2	3020 - SANITARY MH 1-A	177.9
517-12X8 REDUCER	3000 - MAG+D IN CURB	106.3	3020 - SANITARY MH 1-A	31.5

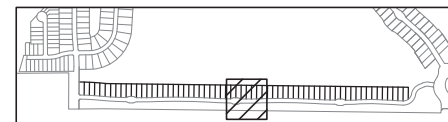


RECORD DRAWING

APPROVED



DESCRIPTION	SWING TIE POINT	DISTANCE	SWING TIE POINT	DISTANCE
507-TEE	3007 - FIRE HYDRANT	8.9	3018 - SANITARY MH 7-2	96.8
508-GATE VALVE	3007 - FIRE HYDRANT	6.1	3018 - SANITARY MH 7-2	97.0
509-GATE VALVE	3007 - FIRE HYDRANT	5.0	3018 - SANITARY MH 7-2	98.8
704-WATER SERV	3007 - FIRE HYDRANT	97.1	3018 - SANITARY MH 7-2	12.4



22X

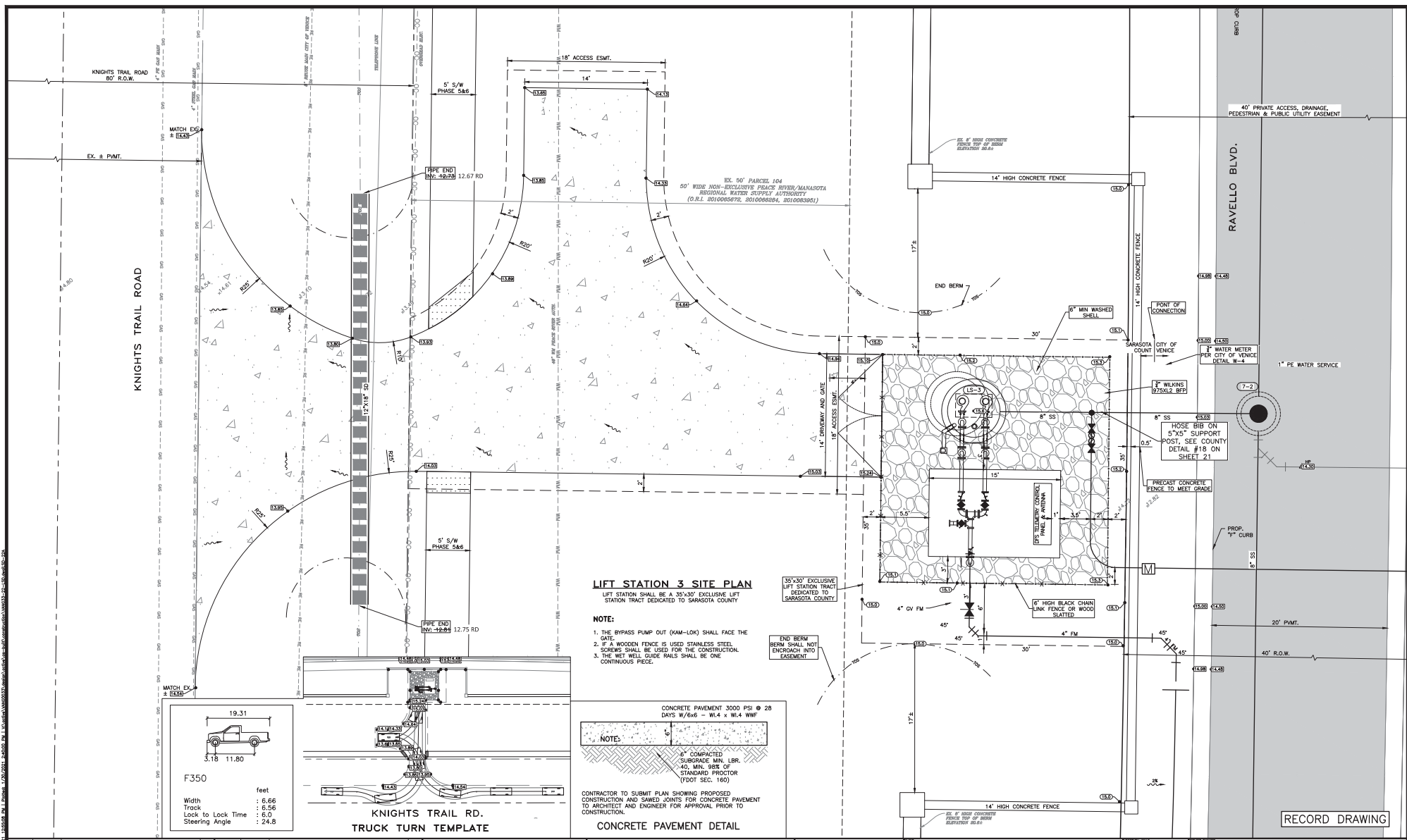


8340 Consumer Court Sarasota, FL 34240
Phone: (941) 377-9178 | www.amengfl.com
CA #33105 | LB #4334



60

DATE _____
FLORIDA P.E. No. 41078



<div> <div> <div>6</div> <div>05/01/21</div> <div>RECORD DRAWING</div> <div>TW</div> </div> <div> <div>4</div> <div>07/13/20</div> <div>SARASOTA COUNTY UTILITY COMMENTS</div> <div>MSL</div> </div> <div> <div>3</div> <div>06/11/20</div> <div>UTILITY REVISIONS PER SARASOTA COUNTY UTILITIES DATED 06/22/20</div> <div>MSL</div> </div> <div> <div>1</div> <div>04/13/20</div> <div>UTILITY REVISIONS PER CITY OF SARASOTA UTILITIES DATED 04/09/20</div> <div>MSL</div> </div> <div> <div>1</div> <div>04/13/20</div> <div>SEWER UTILITY REVISIONS PER SARASOTA COUNTY UTILITIES DATED 04/09/20</div> <div>MSL</div> </div> </div>				<div> <div> <div>CALL BEFORE YOU DIG!</div> <div>"SUNSHINE STATE ONE-CALL CENTER"</div> <div>1-800-432-4770</div> <div>THE CONTRACTOR SHALL NOTIFY "SUNSHINE STATE ONE-CALL CENTER" AND ALL OTHER UTILITIES FOR LOCATION OF EXISTING FACILITIES PRIOR TO BEGINNING CONSTRUCTION.</div> </div> <div> <div>DATE</div> <div>REVISION</div> <div>BY</div> </div> <div> <div>JANUARY 2021</div> <div>TW</div> </div> </div>				<div> <div> <div>CONCRETE PAVEMENT 3000 PSI @ 28 DAYS W/6x6 - W1.4 x W1.4 WWF</div> <div>6" COMPACTED SUBGRADE MIN. LBR. 40 MIN. 98% OF STANDARD PROCTOR (DOT SEC. 140)</div> </div> <div> <div>CONTRACTOR TO SUBMIT PLAN SHOWING PROPOSED CONSTRUCTION AND SAWED JOINTS FOR CONCRETE PAVEMENT TO ARCHITECT AND ENGINEER FOR APPROVAL PRIOR TO CONSTRUCTION.</div> <div>CONCRETE PAVEMENT DETAIL</div> </div> </div>				<div> <div> <div>ENGINEERING, L.L.C.</div> <div>8340 Consumer Court Sarasota, FL 34240</div> <div>Phone: (941) 377-9176 www.amengllc.com</div> <div>CA #93105 LB #4334</div> </div> <div> <div>Civil Engineering Land Surveying</div> <div> <div>0</div> <div>5</div> <div>10</div> <div>20</div> </div> <div>SCALE IN FEET</div> </div> </div>				<div> <div> <div>LALP DEVELOPMENT LLC</div> <div>TOSCANA ISLES - PHASE 7</div> <div>LIFT STATION SITE PLAN AND DETAILS</div> </div> <div> <div>DATE</div> <div>REVISION</div> <div>BY</div> </div> <div> <div>1" = 5'</div> <div>N/A</div> <div>NGVD 29</div> <div>VANG0033</div> <div>22A</div> </div> </div>				<div> <div> <div>D. SHAWN LEINS, PE</div> <div>DATE</div> <div>FLORIDA P.E. No. 41078</div> </div> <div> <div>RECORD DRAWING</div> </div> </div>			
-----------------------------------------------------------------------------------------------------------------------------------------------------------------------------------------------------------------------------------------------------------------------------------------------------------------------------------------------------------------------------------------------------------------------------------------------------------------------------------------------------------------------------------------------------------------------------------------------------------------------------------------	--	--	--	------------------------------------------------------------------------------------------------------------------------------------------------------------------------------------------------------------------------------------------------------------------------------------------------------------------------------------------------------------------------------------------------------------------------	--	--	--	----------------------------------------------------------------------------------------------------------------------------------------------------------------------------------------------------------------------------------------------------------------------------------------------------------------------------------------------------------------------------------------------------------------------	--	--	--	-------------------------------------------------------------------------------------------------------------------------------------------------------------------------------------------------------------------------------------------------------------------------------------------------------------------------------------------------------	--	--	--	----------------------------------------------------------------------------------------------------------------------------------------------------------------------------------------------------------------------------------------------------------------------------------------------------------------	--	--	--	--------------------------------------------------------------------------------------------------------------------------------------------------	--	--	--



LIFT STATION 3 SCHEDULE	
DESCRIPTION	
WET WELL DIAMETER (FT)	6'-0"
PUMP DISCHARGE DIAMETER (IN)	4"
FORCE MAIN DIAMETER (IN)	4"
FORCE MAIN LENGTH (FT)	1800'
INFLUENT PIPE DIAMETER (IN)	8"
RIM ELEV (FT)	15.60
INFLUENT PIPE INVERT ELEV (FT)	0.59
LAG PUMP ON (FT)	-0.41
LEAD PUMP ON (FT)	-0.91
PUMPS OFF (FT)	-1.91
LIFT STATION BOTTOM ELEV (FT)	-12.5
FORCEMAIN DISCHARGE ELEV (FT)	4.58
PRESSURE @ FORCEMAIN DISCHARGE (FT-HEAD)	0
PUMP CAPACITY (G.P.M.)	100
PUMP TOTAL DYNAMIC HEAD (FT-HEAD)	25.22 FEET
PUMP SPEED / IMPELLER (S&M)	6.13 DPA
ELECTRIC MOTOR H.P.	5
ELECTRIC MOTOR SPEED, R.P.M.	1,750
ELECTRIC MOTOR VOLTAGE	480 V/3 Ø
PUMP MODEL	HYDROMATIC - SAN/S&M

SARASOTA COUNTY NOTES:

ALL DISPOSED MANHOLES LIFT TO STATION THE NEXT UPSTREAM MANHOLE AND DROP MANHOLES SHALL BE SEED WITH THE FOLLOWING:

1. AGRU SURF-ORON UNF POLYETHYLENE RANDOM CO-POLYMER (PPH-90) AS MANUFACTURED BY AGRU/AMERICAN, INC. GEORGETOWN, SC.
2. TUFFE, ANDOR SYSTEMS, INC. TUFFE-100, FL.
3. DURA PLATE 100 LINER - POLYVINYL CHLORIDE (PVC) BY A-LOR PRODUCTS INC. TALLAHASSEE, FL.
4. POLYETHYLENE PLASTIC MANHOLE LINER (PML) BY A-LOR PRODUCTS INC. TALLAHASSEE, FL.

ALL MANHOLES (AT THE CONNECTION OF THE PROPOSED FORCE MAIN TO THE MANHOLE AND THE NEXT DOWNSTREAM MANHOLE, (PVC) SHALL BE SEED WITH THE FOLLOWING:

1. SEMPERCOAT AS MANUFACTURED BY KERNDES INC., CHESAPEAKE, VA.
2. RAVEN 405 AS MANUFACTURED BY RAVEN LINING SYSTEMS, TULSA, OK.



CALL BEFORE YOU DIG! "SUNSHINE STATE ONE-CALL CENTER" 1-800-432-4170		THE CONTRACTOR SHALL NOTIFY "SUNSHINE STATE ONE-CALL CENTER" AND ALL OTHER UTILITIES FOR LOCATION OF EXISTING FACILITIES PRIOR TO BEGINNING CONSTRUCTION.	
JANUARY 2021		RECORD DRAWING	



Civil Engineering | Land Surveying

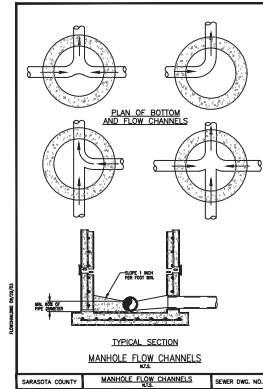
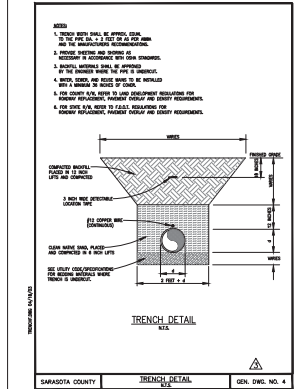
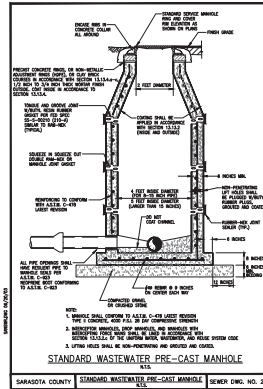
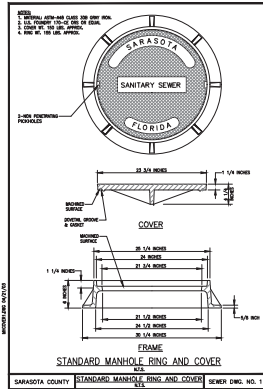
AMENG LLC.

8340 Consumer Court Sarasota, FL 34240
Phone: (941) 377-9178 | www.amengfl.com
CA #33105 | LB #4334

RECORD DRAWING

LALP DEVELOPMENT LLC		PERSONAL SEAL	N/A	PROJECT NUMBER	
TOSCANA ISLES - PHASE 7		OFFICIAL SEAL	N/A		
LIFT STATION SITE PLAN AND DETAILS		OFFICIAL NUMBER	NGVD 29		
		PROJECT NUMBER	VANG0033		
			22B		
				DATE	D. SHAWN LEINS, PE
				FLORIDA P.E. NO.	41078

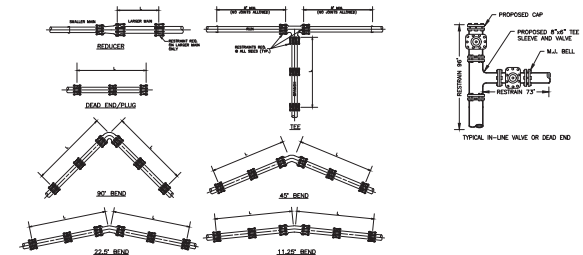
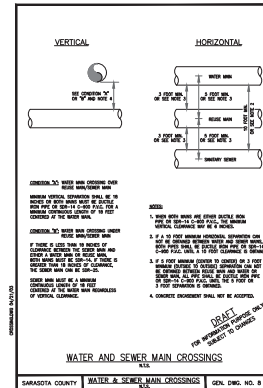
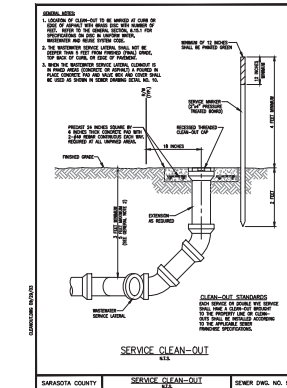
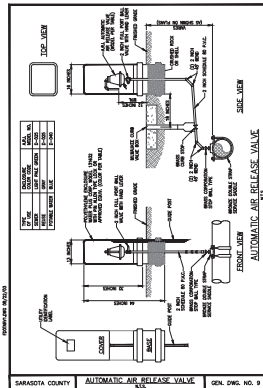
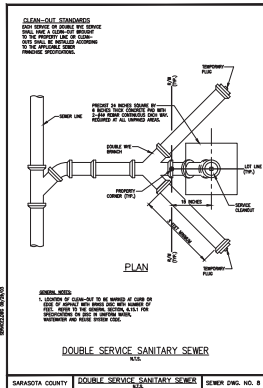
RECORD DRAWING



FITTING	NOMINAL PIPE SIZE (INCHES)															
	4	6	8	10	12	14	16	18	20	24	30	36	42	48		
90° BEND	W	10	14	18	21	25	29	31	34	37	43	50	57	63	69	
	W	4	6	8	10	12	13	14	16	18	21	24	26	29		
	W	11	16	20	24	29	33	37	40	44	52	62	71	80	89	
45° BEND	W	2	3	4	4	4	5	5	6	7	8	9	11	12		
	W	2	3	4	5	5	6	7	8	9	10	12	13	14		
	W	1	2	2	2	2	3	3	3	4	5	5	6			
22.5° BEND	W	1	2	2	3	3	4	4	5	5	6	7				
	W	1	2	2	2	2	3	3	3	4	5	5	6			
	W	1	2	2	2	2	3	3	3	4	5	5	6			
11.25° BEND	W	1	1	1	1	1	1	1	1	1	1	1	1	1		
	W	1	1	1	1	1	1	1	1	1	1	1	1	1		
	W	1	1	1	1	1	1	1	1	1	1	1	1	1		
REDUCER	4	18	20	47	59	72	81	91	101	119	145	169	190	212		
	6	---	21	36	50	63	74	85	95	110	141	168	198	210		
	8	---	---	20	36	50	64	76	88	100	126	160	180	207		
	10	---	---	---	20	36	50	66	78	101	130	167	181	204		
	12	---	---	---	---	21	38	53	67	81	103	131	176	199		
	14	---	---	---	---	---	20	37	53	69	114	144	170	195		
	16	---	---	---	---	---	---	20	38	60	106	136	163	189		
	18	---	---	---	---	---	---	---	20	35	93	127	156	182		
	20	---	---	---	---	---	---	---	---	37	81	117	147	175		
	24	---	---	---	---	---	---	---	---	---	92	96	108	119		
	30	---	---	---	---	---	---	---	---	---	---	52	83	129		
	36	---	---	---	---	---	---	---	---	---	---	---	50	83		
	42	---	---	---	---	---	---	---	---	---	---	---	---	50		
	48	---	---	---	---	---	---	---	---	---	---	---	---	50		
	54	---	---	---	---	---	---	---	---	---	---	---	---	50		
REDUCER ONE FULL LENGTH OF PIPE ON BOTH SIZES AND BRANCH																
VALVE OR DEAD END																

NOTES:

1. LENGTH OF PIPE IS ASSUMED TO BE 18 FT.
2. CONTRACTOR SHALL BE QUOTED BY THIS TABLE. RESTRAINED JOINT LENGTHS WILL VARY IF THE DESIGN SPECIFICATIONS VARY FROM THAT ASSUMED.
3. RESTRAIN ONE FULL LENGTH (18 FT.) OF PIPE MINIMUM, ON EACH SIDE OF ALL FITTINGS REGARDLESS OF THE VALUES INDICATED IN THIS TABLE.
4. IN CASE OF CONCRETE PIPING, BENDING BLOCKS AND/OR WHEELS CALLED FOR ON THE CONSTRUCTION DRAWINGS THE CONTRACTOR SHALL USE THE TABLE BELOW TO DETERMINE THE LENGTH OF PIPE IN FEET FROM EACH BEND, REDUCER, VALVE, TEE, DEAD END OR FITTING THAT SHALL BE RESTRAINED.
5. RESTRAINED BASED ON CEMA IRON, INC. RECOMMENDATIONS.
6. CONTRACTOR CAN PROVIDE AN APPROVED EQUAL PROVIDED SHOP DRAWINGS WITH MANUFACTURER'S RECOMMENDATIONS ARE PROVIDED TO AND APPROVED BY ENGINEER PRIOR TO INSTALLATION.



RECORD DRAWING

CALL BEFORE YOU DIG!

"SUNSHINE STATE ONE-CALL CENTER"

1-800-432-4770

THE CONTRACTOR SHALL NOTIFY "SUNSHINE STATE ONE-CALL CENTER" AND ALL OTHER UTILITIES FOR LOCATION OF EXISTING UTILITIES PRIOR TO BEGINNING CONSTRUCTION.

DATE: JANUARY 2021

REVISION: TW

RECORD DRAWING



Civil Engineering | Land Surveying

8340 Consumer Court Sarasota, FL 34240
Phone: (941) 377-9176 | www.amengllc.com
CA #33105 | LB #4334

LALP DEVELOPMENT LLC

TOSCANA ISLES - PHASE 7

WATER & SEWER DETAILS

REVISION

N/A

N/A

NGVD 29

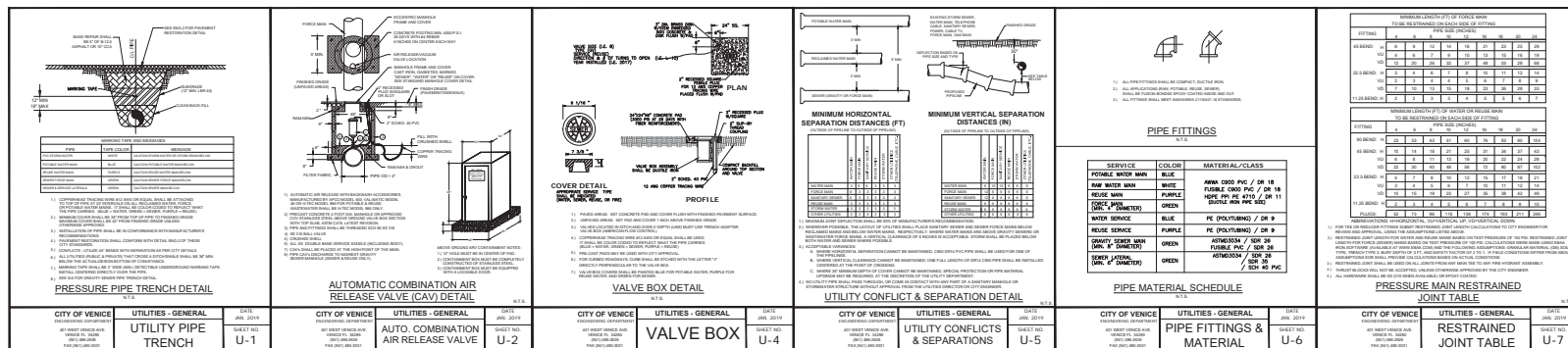
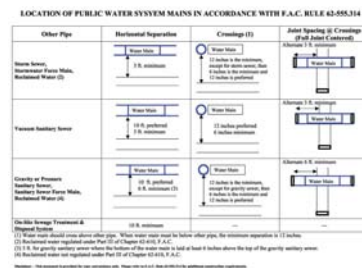
VANG0033

23

D. SHAWN LEWIS, PE

DATE

FLORIDA P.E. NO. 41078



March 25, 2021

APPROVED

