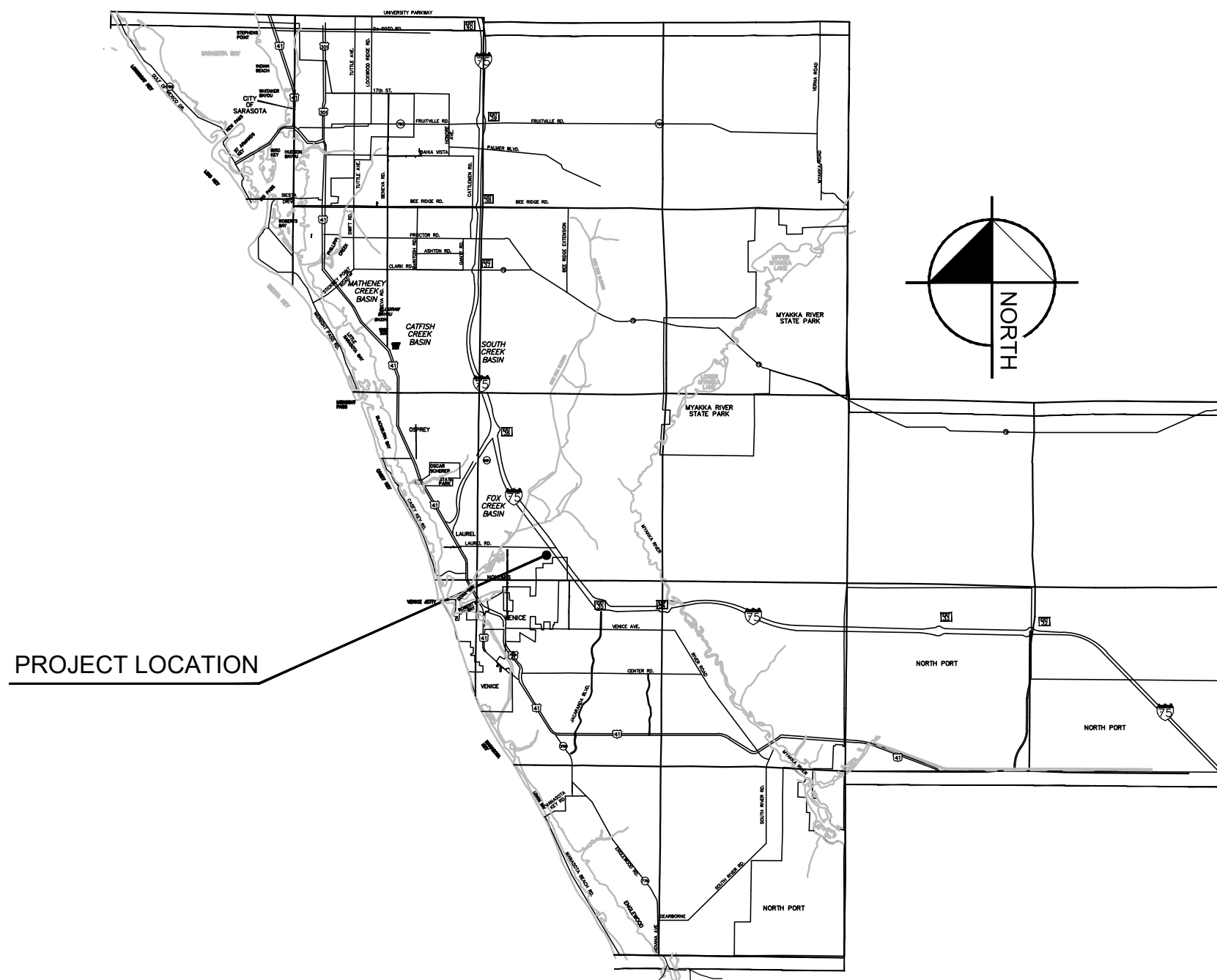


UTILITY RECORD DRAWINGS FOR WATERFORD FORCE MAIN IMPROVEMENTS

SECTION 33, TOWNSHIP 38 S, RANGE 19 E
NORTH VENICE, FLORIDA

DECEMBER 2022



VICINITY MAP



LOCATION MAP

PREPARED BY
Kimley»Horn

© 2021 KIMLEY-HORN AND ASSOCIATES, INC.
1777 MAIN STREET, Suite 200, Sarasota, FL 34236
PHONE (941) 379-7600
WWW.KIMLEY-HORN.COM REGISTRY NO. 696

Sheet List Table	
Sheet Number	Sheet Title
A-01	COVER SHEET
A-02	GENERAL NOTES AND TYPICAL SECTION
A-03	AERIAL SITE PLAN
A-04	EXISTING CONDITIONS AND DEMOLITION PLAN
A-05	EXISTING CONDITIONS AND DEMOLITION PLAN
A-06	BEST MANAGEMENT PRACTICES PLAN
A-07	BEST MANAGEMENT PRACTICES PLAN
A-08	BEST MANAGEMENT PRACTICES DETAILS
A-09	PAVING GRADING AND DRAINAGE PLAN
A-10	PAVING GRADING AND DRAINAGE PLAN
C-01	MASTER UTILITY PLAN
C-02	PLAN AND PROFILE INDEX PLAN
C-03	PLAN AND PROFILE
C-04	PLAN AND PROFILE
C-05	PLAN AND PROFILE
C-06	OFFSITE PLAN AND PROFILE
C-07	OFFSITE PLAN AND PROFILE
C-08	OFFSITE PLAN AND PROFILE
C-09	OFFSITE PLAN AND PROFILE
C-10	CITY OF VENICE WATER AND SEWER DETAILS
C-11	CITY OF VENICE WATER AND SEWER DETAILS
C-12	CITY OF VENICE WATER AND SEWER DETAILS
C-13	CITY OF VENICE LIFT STATION DETAILS
C-14A	PUMP AND CITY OF VENICE LIFT STATION DETAILS - SCENARIO 1
C-14B	PUMP AND CITY OF VENICE LIFT STATION DETAILS - SCENARIO 2
C-14C	PUMP AND CITY OF VENICE LIFT STATION DETAILS - SCENARIO 3

DEVELOPER: CAH DEVELOPMENTS, LLC
41 N JEFFERSON ST. 4TH FLOOR
PENSACOLA, FL 32502
PH: 850-607-6069
CONTACT: PHIL SCHUCK

ENGINEER AND LANDSCAPE ARCHITECTURE:
KIMLEY HORN AND ASSOCIATES, INC.
1777 MAIN STREET, SUITE 200
SARASOTA, FL 34236
PH: (941) 379-7600
CONTACT: RYAN R. HOPPE, P.E.

SURVEYOR: BRITT SURVEYING, INC.
606 CYPRESS AVENUE
VENICE, FL 34285
PH: (941) 493-1396
CONTACT: RANDALL E. BRITT, PSM

UTILITY COMPANIES:

FPL 5657 NORTH McINTOSH ROAD SARASOTA, FLORIDA 34233	TECO GAS 8261 VICO COURT SARASOTA, FLORIDA 34240-7844
FRONTIER 1701 RINGLING BLVD. SARASOTA, FLORIDA 34236 941-906-6711	COMCAST CABLE 5205 FRUITVILLE ROAD SARASOTA, FLORIDA 34232
VENICE UTILITIES 401 W. VENICE AVE. VENICE, FL 34285 (941) 882-7297 CONTACT: PATIENCE ANATASIO	

I HEREBY CERTIFY THAT THE DESIGN OF THIS PROJECT, AS PREPARED UNDER MY PERSONAL DIRECTION AND CONTROL, COMPLIES WITH ALL APPLICABLE STANDARDS, INCLUDING THE "MANUAL OF UNIFORM MINIMUM STANDARDS FOR DESIGN, CONSTRUCTION AND MAINTENANCE FOR STREETS AND HIGHWAYS" AS ADOPTED BY THE FLORIDA DEPARTMENT OF TRANSPORTATION PURSUANT TO SUBSECTIONS 335.075(1) AND (4), FLORIDA STATUTES.

No. 79400
STATE OF FLORIDA
Professional Engineer
Ryan R. Hoppe
FLA. P.E. License No. 79400
REGISTRY NO. 696

DATE:

This document, together with the concepts and designs presented herein, as an instrument of service, is intended only for the specific purpose and client for which it was prepared. Reuse of and improper reliance on this document without written authorization and adaptation by Kimley-Horn and Associates, Inc. shall be without liability to Kimley-Horn and Associates, Inc.

GENERAL NOTES:

- ALL CONSTRUCTION TO BE IN ACCORDANCE WITH THE CITY OF VENICE LAND DEVELOPMENT REGULATIONS.
- THE CONTRACTOR SHALL RETAIN ON THE WORK SITE AT ALL TIMES COPIES OF ALL PERMITS NECESSARY FOR CONSTRUCTION.
- THE NORTH AMERICAN VERTICAL DATUM (NAVD) OF 1988 IS THE BENCHMARK DATUM FOR THIS PROJECT. CONVERSION FACTOR: NAVD 1988 + 1.11 FT = NGVD 1929.
- ALL AREAS DESIGNATED AS "PRESERVE OR CONSERVATION" TO BE CLEARLY DELINEATED PRIOR TO CONSTRUCTION.

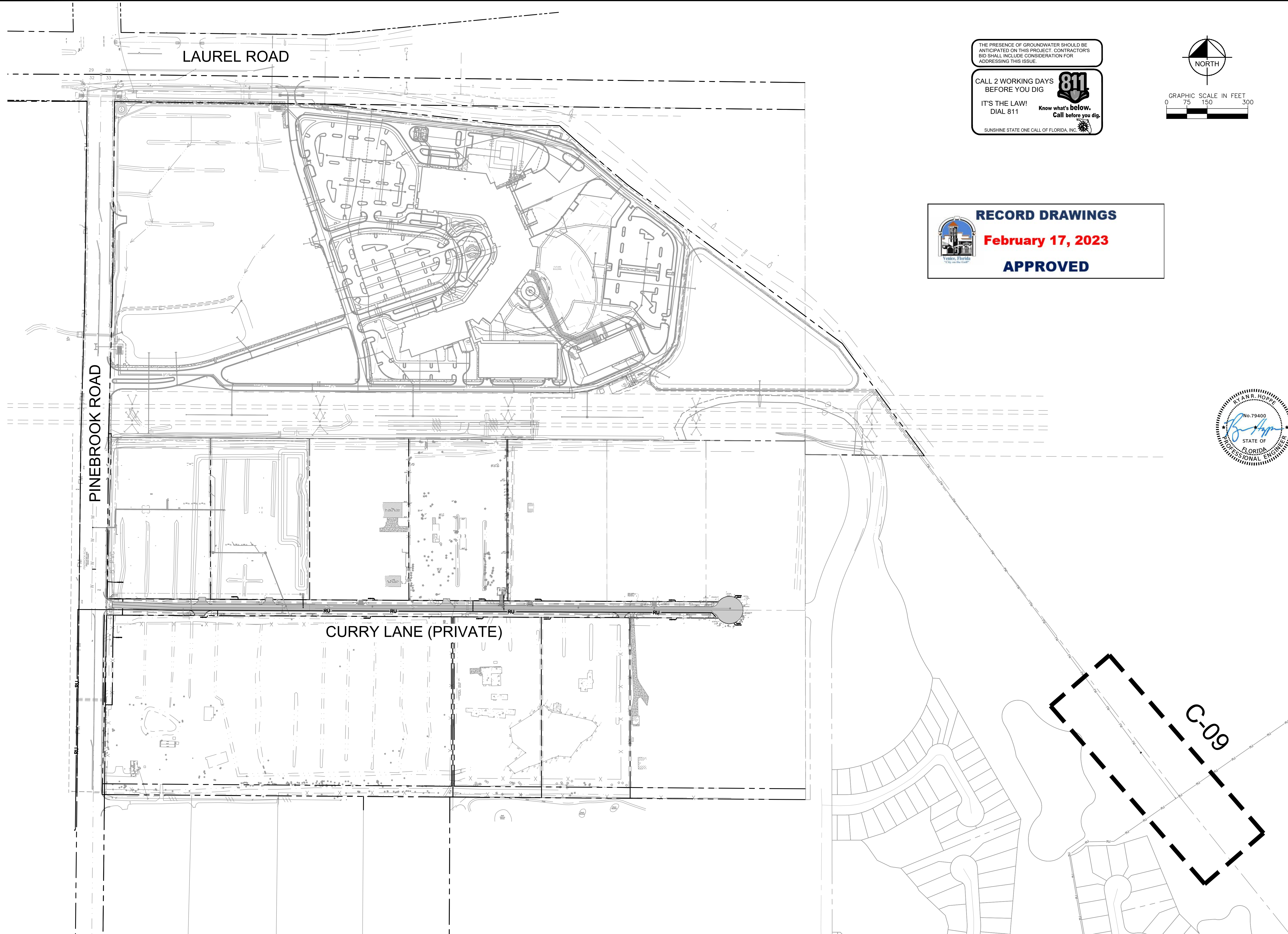
GENERAL CONSTRUCTION NOTES:

- THERE SHALL BE NO CHANGE OR DEVIATION FROM THESE PLANS UNLESS APPROVED BY THE ENGINEER OR CITY OF VENICE.
- ALL CLEARING AND GRUBBING DEBRIS TO BE BURNED OR REMOVED FROM SITE AND IS PART OF CLEARING AND GRUBBING ITEM.
- IT IS THE INTENT OF THE OWNER THAT CERTAIN TREES BE DESIGNATED TO BE SAVED AND PROTECTED BY THE CONTRACTOR. IT IS ASSUMED THESE TREES ARE HEALTHY AND ARE EXPECTED TO BE PART OF THE LANDSCAPE DEVELOPMENT. THEREFORE, IF ANY TREE(S) DAMAGED BY CONSTRUCTION OPERATION OR BY OTHER MEANS (EXCLUDING LIGHTNING, WINDSTORM AND OTHER ACTS OF GOD) PERISHES WITHIN THE CONSTRUCTION PERIOD, IT WILL BE THE RESPONSIBILITY OF THE CONTRACTOR TO REMOVE AND DISPOSE OF THOSE TREES. NO ADDITIONAL COMPENSATION WILL BE MADE BY THE OWNER FOR THE LABOR, MATERIAL OR MACHINERY REQUIRED TO REMOVE SAID TREES. EXOTIC VEGETATION (E.G., MELALEUCA AND BRAZILIAN PEPPER) EXISTING WITHIN THE PROJECT AREA SHALL BE REMOVED AND PROPERLY DISPOSED OF IN AN APPROVED LANDFILL.
- WHERE EXCAVATIONS ARE IN CLOSE PROXIMITY OF TREES, THE CONTRACTOR SHALL USE EXTREME CARE IN NOT DAMAGING THE ROOT SYSTEM. NO EQUIPMENT, SUPPLIES OR VEHICLES SHALL BE STORED OR PARKED WITHIN THE DRIP LINE OF TREES TO REMAIN AND BE PRESERVED. IT WILL BE THE RESPONSIBILITY OF THE CONTRACTOR TO INFORM ALL OF HIS EMPLOYEES AND SUBCONTRACTORS OF THIS REQUIREMENT AND TO ENFORCE SAME.
- LAY SOD AROUND ALL INLETS, MITERED ENDWALLS, HEADWALLS, SWALES, LAKE SLOPES, AND TWO FEET (2') WIDE STRIP ADJACENT TO ALL CURBING, AND AS DIRECTED BY THE ENGINEER. ALL PROPOSED GROUND ELEVATIONS ARE FINISHED SOD ELEVATIONS. FINISH EARTHWORK GRADING WILL BE 0.2 FEET BELOW ELEVATIONS SHOWN TO ALLOW FOR SOD THICKNESS. SODDING INCLUDES MAINTAINING SLOPES AND SOD UNTIL COMPLETION AND ACCEPTANCE OF TOTAL PROJECT OR GROWTH IS ESTABLISHED WHICHEVER COMES LAST. ALL EROSION SILTATION AND MAINTAINING GRADES IS THE RESPONSIBILITY OF THE CONTRACTOR UNTIL THEN.
- CALL "SUNSHINE" (1-800-432-4770), COMCAST, FPL, CITY OF VENICE UTILITIES DEPARTMENT, TECO, AND FRONTIER PRIOR TO CONSTRUCTION AND CONNECTION TO EXISTING UTILITIES. IT IS THE CONTRACTOR'S RESPONSIBILITY TO PROTECT EXISTING UTILITIES FROM DAMAGE.
- ALL UTILITY LINES, STORM DRAIN LINES AND ACCESSORIES SUCH AS, BUT NOT LIMITED TO MANHOLES, CLEANOUTS, SEWER AND WATER SERVICES, VALVES, FIRE HYDRANTS AND INLETS WILL BE CONSTRUCTED TO ALIGNMENT AND LOCATIONS SHOWN ON PLANS UNLESS OTHERWISE DIRECTED BY THE ENGINEER.
- CLEARING, GRUBBING, STRIPPING, AND COMPACTION WILL BE INSPECTED BY THE ENGINEER PRIOR TO FILLING.
- PRIOR TO THE START OF CONSTRUCTION ACTIVITIES, CONSERVATION/PRESERVE AREAS, EXISTING LAKES & WATERWAYS WITHIN AND ADJOINING THE AREA OF CONSTRUCTION ACTIVITY SHALL BE PROTECTED BY ERECTION OF TREE PROTECTION BARRICADES AND/OR SILT BARRIERS. TREE PROTECTION BARRICADES SHALL MEET THE STANDARDS OF THE CITY OF VENICE. SILT BARRIERS SHALL BE CONSTRUCTED IN ACCORDANCE WITH THE "BEST MANAGEMENT PRACTICES PLAN" AND THE "BMP DETAIL" SHOWN ON DWGS. 6-1 THROUGH 6-2 OF THE FINAL CONSTRUCTION PLANS. THE ENGINEER WILL DETERMINE THE EXTENT AND TYPE OF PROTECTIVE MEASURES TO BE CONSTRUCTED FOR PROTECTION OF CONSERVATION/PRESERVE AREAS. THE ENGINEER SHALL BE NOTIFIED WHEN PRESERVE AREA BARRICADES AND BARRIERS ARE IN PLACE.
- THE SITE CONSTRUCTION STAKEOUT SHALL BE PERFORMED UNDER THE DIRECTION OF A FLORIDA REGISTERED SURVEYOR. AUTOCAD FILES WILL BE FURNISHED TO AID IN THE SITE CONSTRUCTION STAKEOUT. ANY DISCREPANCIES FOUND BETWEEN THE AUTOCAD FILES AND SITE CONSTRUCTION PLANS SHALL BE BROUGHT TO THE ENGINEER'S ATTENTION FOR CLARIFICATION PRIOR TO THAT STAKEOUT.
- ALL DRAINAGE PIPE JOINTS SHALL BE WRAPPED PER FDOT INDEX NO. 280, SHEET 1.
- ROADWAY AND DRAINAGE STRUCTURES SHALL MEET FDOT STANDARD SPECIFICATIONS SECTION 346 OF 3000 PSI CONCRETE.
- THE WETLAND AND ASSOCIATED UPLAND VEGETATIVE BUFFER SHALL BE MAINTAINED IN ACCORDANCE WITH MANAGEMENT GUIDELINES CONTAINED WITHIN THE COMPREHENSIVE PLAN AS A CONSERVATION AREA OR PRESERVE. ALL ACTIVITIES INVOLVING FILLING, EXCAVATING, WELL DRILLING, ALTERING VEGETATION (INCLUDING TRIMMING OF BOTH TREES AND UNDERSTORY) AND STORING OF MATERIALS SHALL BE PROHIBITED WITHIN PRESERVATION AREAS. UNLESS WRITTEN APPROVAL IS FIRST OBTAINED FROM RESOURCE PROTECTION SERVICES TO FACILITATE IMPLEMENTATION OF APPROVED HABITAT MANAGEMENT PLANS OR THE REMOVAL OF NUISANCE/INVASIVE VEGETATION.
- A TREE REMOVAL AND PROTECTION PERMIT WILL BE REQUIRED PRIOR TO ANY CONSTRUCTION, CLEARING OR TREE REMOVAL. ALL WORK PERFORMED SHALL BE IN ACCORDANCE WITH THE CITY OF VENICE CODE.
- EROSION AND SEDIMENT CONTROL BMP'S IN ADDITION TO THOSE PRESENTED ON THE PLANS AND OUTLINED IN THE EROSION AND SEDIMENT CONTROL PLAN (ECP), BEST MANAGEMENT PRACTICES (BMP) PLAN, OR STORMWATER POLLUTION PREVENTION PLAN (SWPPP) SHALL BE IMPLEMENTED AS NECESSARY TO PREVENT TURBID DISCHARGES FROM FLOWING ONTO ADJACENT PROPERTIES OR ROADWAYS, OFF SITE STORMWATER CONVEYANCES OR RECEIVING WATERS, OR ON SITE WETLANDS AND SURFACE WATERS. BMP'S SHALL BE DESIGNED, INSTALLED, AND MAINTAINED BY THE SITE OPERATOR TO ENSURE THAT OFF SITE SURFACE WATER QUALITY REMAINS CONSISTENT WITH STATE AND LOCAL REGULATIONS. [THE OPERATOR IS THE ENTITY THAT OWNS OR OPERATES THE CONSTRUCTION ACTIVITY AND HAS AUTHORITY TO CONTROL THOSE ACTIVITIES AT THE PROJECT NECESSARY TO ENSURE COMPLIANCE.]
- OFFSITE SURFACE WATER DISCHARGES, DISCHARGES TO THE M4, OR DISCHARGES TO ONSITE WETLANDS OR SURFACE WATERS WITH TURBIDITY IN EXCESS OF 29 NEPHELOMETRIC TURBIDITY UNITS (NTU) ABOVE BACKGROUND LEVEL SHALL BE IMMEDIATELY CORRECTED. SUCH INCIDENTS SHALL BE REPORTED TO THE CITY OF VENICE WITHIN 24 HOURS OF THE OCCURRENCE. THE REPORT SHALL INCLUDE THE CAUSE OF THE DISCHARGE AND CORRECTIVE ACTIONS TAKEN.
- FUEL AND OTHER PETROLEUM PRODUCT SPILLS THAT ENTER STORMWATER DRAINS OR WATERBODIES, OR FUEL AND OTHER PETROLEUM PRODUCT SPILLS THAT ARE IN EXCESS OF 25 GALLONS SHALL BE CONTAINED, CLEANED UP, AND IMMEDIATELY REPORTED TO THE CITY OF VENICE. SMALLER GROUND SURFACE SPILLS SHALL BE CLEANED UP AS SOON AS PRACTICAL.
- IF CONTAMINATED SOIL AND/OR GROUNDWATER IS DISCOVERED DURING DEVELOPMENT OF THE SITE, ALL ACTIVITY IN THE VICINITY OF THE CONTAMINATION SHALL IMMEDIATELY CEASE, AND THE CITY OF VENICE SHALL BE CONTACTED.
- FERTILIZER APPLICATION SHALL BE CONSISTENT WITH THE CITY OF VENICE CODE.
- NATIONAL POLLUTANT DISCHARGE ELIMINATION SYSTEM - STORMWATER:
 - NPDES CONSTRUCTION GENERIC PERMIT COVERAGE SHALL BE OBTAINED AT LEAST 48 HOURS IN ADVANCE OF CONSTRUCTION COMMENCEMENT IN ACCORDANCE WITH RULE 62-421.300(4)(A), F.A.C.
 - A COPY OF THE CERTIFIED NPDES NOI, OR A COPY OF THE FDEP COVERAGE CONFIRMATION LETTER SHALL BE POSTED AT THE SITE IN ACCORDANCE WITH RULE 62-421.300(4)(A)PART III.C.2, F.A.C.
 - A COPY OF THE CERTIFIED NPDES NOI, OR A COPY OF THE FDEP COVERAGE CONFIRMATION LETTER SHALL BE PROVIDED TO AIR AND WATER QUALITY IN ACCORDANCE WITH RULE 62-421.300(4)(A)PART III.D.1, F.A.C.
- THE SWPPP SHALL BE CERTIFIED IN ACCORDANCE WITH RULE 62-421.300(4)(A)PART V.D.6, F.A.C. AND A COPY OF THE CERTIFIED DOCUMENT SHALL BE SUBMITTED TO AIR AND WATER QUALITY AT LEAST 48 HOURS PRIOR TO THE COMMENCEMENT OF CONSTRUCTION.
- A COPY OF THE SWPPP, AND COPIES OF THE INSPECTION AND MAINTENANCE RECORDS SHALL BE MAINTAINED AT THE PROJECT SITE, AND SHALL BE READILY AVAILABLE TO STATE INSPECTORS.
- NATIONAL POLLUTANT DISCHARGE ELIMINATION SYSTEM - DEWATERING:
THE DISCHARGE OF GROUNDWATER PRODUCED THROUGH DEWATERING, TO SURFACE WATERS, OR TO ANY PORTION OF THE M4 WILL REQUIRE SEPARATE PERMITTING FROM THE DEP. PERMITS SHALL BE OBTAINED PRIOR TO THE COMMENCEMENT OF DEWATERING. ANALYTICAL RESULTS FROM PRE-DISCHARGE TESTING SHALL BE PROVIDED TO AIR AND WATER QUALITY.
- THE CONTRACTOR SHALL ENSURE THAT ADJACENT PROPERTIES ARE NOT IMPACTED BY WIND EROSION OR EMISSIONS OF UNCONFINED PARTICULATE MATTER IN ACCORDANCE WITH RULE 62-296.320(4)(c)1, FLORIDA ADMINISTRATIVE CODE, FROM THE CONSTRUCTION SITE BY TAKING ADEQUATE MEASURES TO STABILIZE AFFECTED AREAS.
- DEPARTMENT OF ENVIRONMENTAL PROTECTION WATER AND WASTEWATER PERMITS ARE REQUIRED.
- ANY WELLS DISCOVERED ON SITE THAT WILL HAVE NO USE MUST BE PLUGGED BY A LICENSED WELL DRILLING CONTRACTOR IN AN APPROVED MANNER.
- IN THE EVENT THAT THE CONSTRUCTION SITE IS ABANDONED PRIOR TO THE PROJECT COMPLETION, ALL CONSTRUCTION AND VEGETATIVE DEBRIS SHALL BE REMOVED FROM THE SITE AND DISPOSED OF AT AN APPROVED LANDFILL FACILITY.
- A SEPARATE BUILDING PERMIT MUST BE APPLIED FOR AND ISSUED FOR EVERY SIGN, WALL, OUTDOOR LIGHTING AND STRUCTURE ON THE SITE. THE APPROVAL OF THESE CONSTRUCTION PLANS DOES NOT EXEMPT THE CONTRACTOR FROM OBTAINING THE NECESSARY BUILDING PERMITS.

CITY OF VENICE REQUIRED NOTES:

- ALL WORK CONDUCTED IN THE CITY OF VENICE RIGHT-OF-WAY (ROW) WILL REQUIRE THE ISSUANCE OF A ROW PERMIT.
- ALL WORK CONDUCTED IN SARASOTA COUNTY AND/OR FDOT ROW SHALL REQUIRE A COPY OF STATE ISSUED PERMITS.
- TREE REMOVAL PERMIT MUST BE OBTAINED FROM THE CITY OF VENICE.
- POST DEVELOPMENT RUNOFF DOES NOT EXCEED PRE-DEVELOPMENT RUNOFF VOLUME OR RATE FOR A 24-HOUR, 25-YEAR STORM EVENT.
- ALL FIRE SERVICE BACKFLOW ASSEMBLIES SHALL BE INSTALLED BY A CERTIFIED CONTRACTOR WITH A CLASS I, II, OR V CERTIFICATE OF COMPETENCY ISSUED BY THE STATE FIRE MARSHALL AS PER F.S. 633.521.
- CONSTRUCTION SITE MUST BE POSTED WITH 24-HOUR CONTACT INFORMATION.
- ALL UTILITIES, WHETHER PUBLIC OR PRIVATE, SHALL MEET CITY OF VENICE STANDARDS.
- CONTACT PUBLIC WORKS SOLID WASTE DIVISION (941-486-2422) FOR APPROVAL OF DUMPSTER LOCATION AND LAYOUT PRIOR TO CONSTRUCTION.

This document, together with the concepts and designs presented herein, is intended only for the specific purpose and client for which it was prepared. Reuse of and improper reliance on this document without written authorization and adaptation by Kimley-Horn and Associates, Inc. shall be without liability to Kimley-Horn and Associates, Inc.



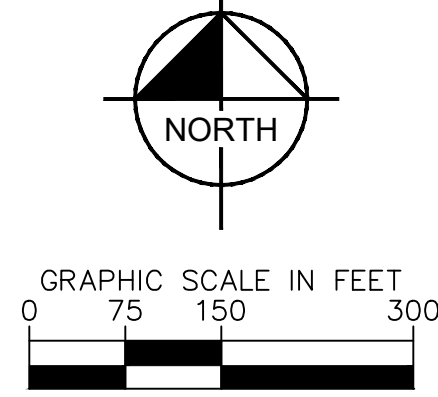
THE PRESENCE OF GROUNDWATER SHOULD BE ANTICIPATED ON THIS PROJECT. CONTRACTORS BID SHALL INCLUDE CONSIDERATION FOR ADDRESSING THIS ISSUE.

CALL 2 WORKING DAYS BEFORE YOU DIG

IT'S THE LAW! DIAL 811

Know what's below. Call before you dig.

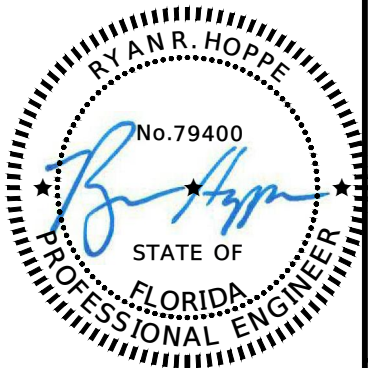
SUNSHINE STATE ONE CALL OF FLORIDA, INC.



RECORD DRAWINGS

February 17, 2023

APPROVED



LICENSED PROFESSIONAL ENGINEER
 RYAN R. HOPPE, P.E.
 FL LICENSE NUMBER 79400

KHA PROJECT 043490000
 DATE DECEMBER 2022
 SCALE AS SHOWN
 DESIGNED BY KHA
 DRAWN BY DMA
 CHECKED BY KCK

PLAN AND PROFILE
INDEX PLAN

WATERFORD FORCMAIN IMPROVEMENTS
 PREPARED FOR
CAH DEVELOPMENTS, LLC
 CITY OF VENICE, FL

SHEET NUMBER
C-02

NO.	REVISIONS	DATE	BY

Kimley»Horn

© 2021 KIMLEY-HORN AND ASSOCIATES, INC.
 1777 MAIN STREET, SUITE 200, SARASOTA, FL 34236
 PHONE: 941-379-7600
 WWW.KIMLEY-HORN.COM REGISTRY NO. 35106

Plotted By: Efcib - Sheet: Set: Curry Lane - Layout: C-09 OFFSITE FORCE MAIN - February 07, 2023 - 05:26:50pm - b:\server\Workgroup\Projects\WOODLAND\ACRES\21222 WATERMARK AT PINEROCK\CURRY LANE FM EXTENSION\C-09 OFFSITE FORCE MAIN - Standard\RECORD DRAWING-C-09 OFFSITE FORCE MAIN.dwg
 This document, together with the concepts and designs presented herein, is an instrument of service, is intended only for the specific purpose and client for which it was prepared. Reuse or improper reliance on this document without written authorization and adaptation by Kimley-Horn and Associates, Inc. shall be without liability to Kimley-Horn and Associates, Inc.

Point	Northing	Eastng	Elevation	Description
7	1016639.184	524472.369	15.47	MAG NAIL & DISK
8	1016775.004	524299.444	14.82	MAG NAIL & DISK
10	1016711.484	524465.232	12.30	6" SLEEVE
11	1016670.855	524496.377	12.16	TOP 6" FORCE MAIN
12	1016670.131	524502.085	5.99	6" TAP
13	1016667.293	524503.717	5.94	6" 45° BEND
14	1016666.458	524504.527	6.58	6" 45° BEND
15	1016664.197	524502.907	10.42	6" 45° BEND
16	1016664.707	524501.764	11.97	6" 45° BEND
17	1016786.407	524409.274	10.30	TOP 6" FORCE MAIN
18	1016655.474	524529.837	16.82	MAG NAIL & DISK IN PALM
21	1016688.387	524397.242	16.12	MAG NAIL & DISK
30	1016866.241	524356.963	9.34	TOP NUT SANITARY SEWER VALVE
31	1016866.314	524356.972	13.64	TOP LID SANITARY SEWER VALVE

FORCE MAIN SWING TIE TABLE							
Fitting			Location 1		Location 2		
Pt No.	Description	Elev	Pt No.	Description	Distance	Pt No.	Description
10	6" SLEEVE	12.30	7	MAG NAIL & DISK IN CART PATH	72.65	8	MAG NAIL & DISK IN CART PATH
11	TOP 6" FORCE MAIN	12.16	7	MAG NAIL & DISK IN CART PATH	39.74	18	MAG NAIL & DISK IN PALM TREE
12	6" TAP	5.99	7	MAG NAIL & DISK IN CART PATH	42.90	18	MAG NAIL & DISK IN PALM TREE
13	6" 45° BEND	5.94	7	MAG NAIL & DISK IN CART PATH	42.10	18	MAG NAIL & DISK IN PALM TREE
14	6" 45° BEND	6.58	7	MAG NAIL & DISK IN CART PATH	42.17	18	MAG NAIL & DISK IN PALM TREE
15	6" 45° BEND	10.42	7	MAG NAIL & DISK IN CART PATH	39.47	18	MAG NAIL & DISK IN PALM TREE
16	6" 45° BEND	11.97	7	MAG NAIL & DISK IN CART PATH	38.93	18	MAG NAIL & DISK IN PALM TREE
17	TOP 6" FORCE MAIN	10.30	7	MAG NAIL & DISK IN CART PATH	160.17	8	MAG NAIL & DISK IN CART PATH
30	TOP NUT SANITARY SEWER VALVE	9.34	8	MAG NAIL & DISK IN CART PATH	107.85	21	MAG NAIL & DISK IN PALM TREE
31	TOP LID SANITARY SEWER VALVE	13.64	8	MAG NAIL & DISK IN CART PATH	107.92	21	MAG NAIL & DISK IN CART PATH

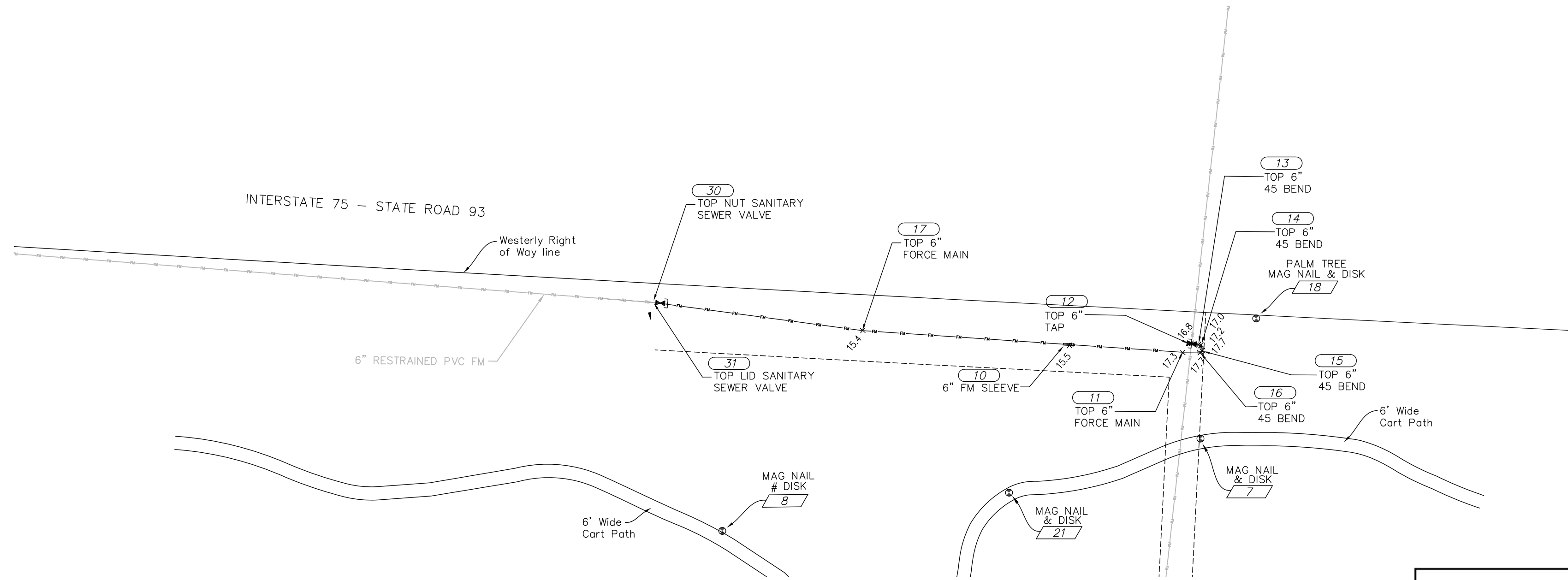
- ALL UTILITY MAINS SHALL HAVE 3' OF COVER UNLESS OTHERWISE NOTED.
- ALL WATER, REUSE AND IRRIGATION MAINS SHALL BE PVC, C-900, DR-18, CL 235, UNLESS OTHERWISE NOTED.
- ALL SANITARY SEWER GRAVITY MAINS SHALL BE PVC, SDR-26, UNLESS OTHERWISE INDICATED.
- ALL SANITARY SEWER FORCE MAINS SHALL BE PVC, C900, DR-18 UNLESS OTHERWISE INDICATED.
- ALL FIRE HYDRANTS SHALL BE LOCATED 1' BACK OF R/W TYPICALLY, UNLESS OTHERWISE NOTED.
- PROFILES ARE ROTATED FOR CLARITY.
- SEE UTILITY DETAIL DRAWINGS FOR WATER, IRRIGATION, REUSE AND SEWER SERVICE TERMINATIONS.
- SANITARY GRAVITY SEWER PIPE LENGTHS ARE FROM CENTER TO CENTER OF MANHOLES.
- ALL WATER SERVICES AND CURB STOPS ARE 1", UNLESS OTHERWISE NOTED.
- THE MAXIMUM ALLOWABLE PIPE DEFLECTION IS 75% OF THE MANUFACTURER'S RECOMMENDED MAXIMUM DEFLECTION.

- FIELD DEFLECT MAINS TO CLEAR BEHIND INLETS WHERE REQUIRED AND MAINTAIN MINIMUM SEPARATION.
- MAINS SHALL BE 5' BACK OF CURB (TYPICAL), UNLESS OTHERWISE NOTED OR SHOWN.
- ALL SINGLE AND DOUBLE WATER SERVICES UNDER ROADWAYS ARE TO BE SLEEVED.
- PIPE JOINTS SHALL BE RESTRAINED AS PER DETAILS AND NOTES ON DRAWING D-1.
- PROFILE GRADE IS THE CENTERLINE OF PAVEMENT GRADE AND/OR ITS EXTENSION TO THE CONTROL LINE OF R/W (BASELINE).
- ALL VALVE COVERS AND/OR PADS THAT ARE WITHIN, ADJACENT TO OR IN CLOSE PROXIMITY TO SIDEWALK SHALL BE ADJUSTED TO MATCH SIDEWALK GRADES.
- ALL FIRE HYDRANT ASSEMBLIES SHALL INCLUDE A 6" GATE VALVE WHICH SHALL BE LOCATED AT THE TEE.
- UTILITY SYMBOLS ON THE PLAN MAY APPEAR LARGER THAN ACTUAL SIZE OR MOVED FROM INTENDED LOCATION FOR CLARITY. UTILITY APPURTENANCES ARE TO BE INSTALLED PER DETAILS IN PLAN SET OR REFERENCED STANDARD DETAILS.

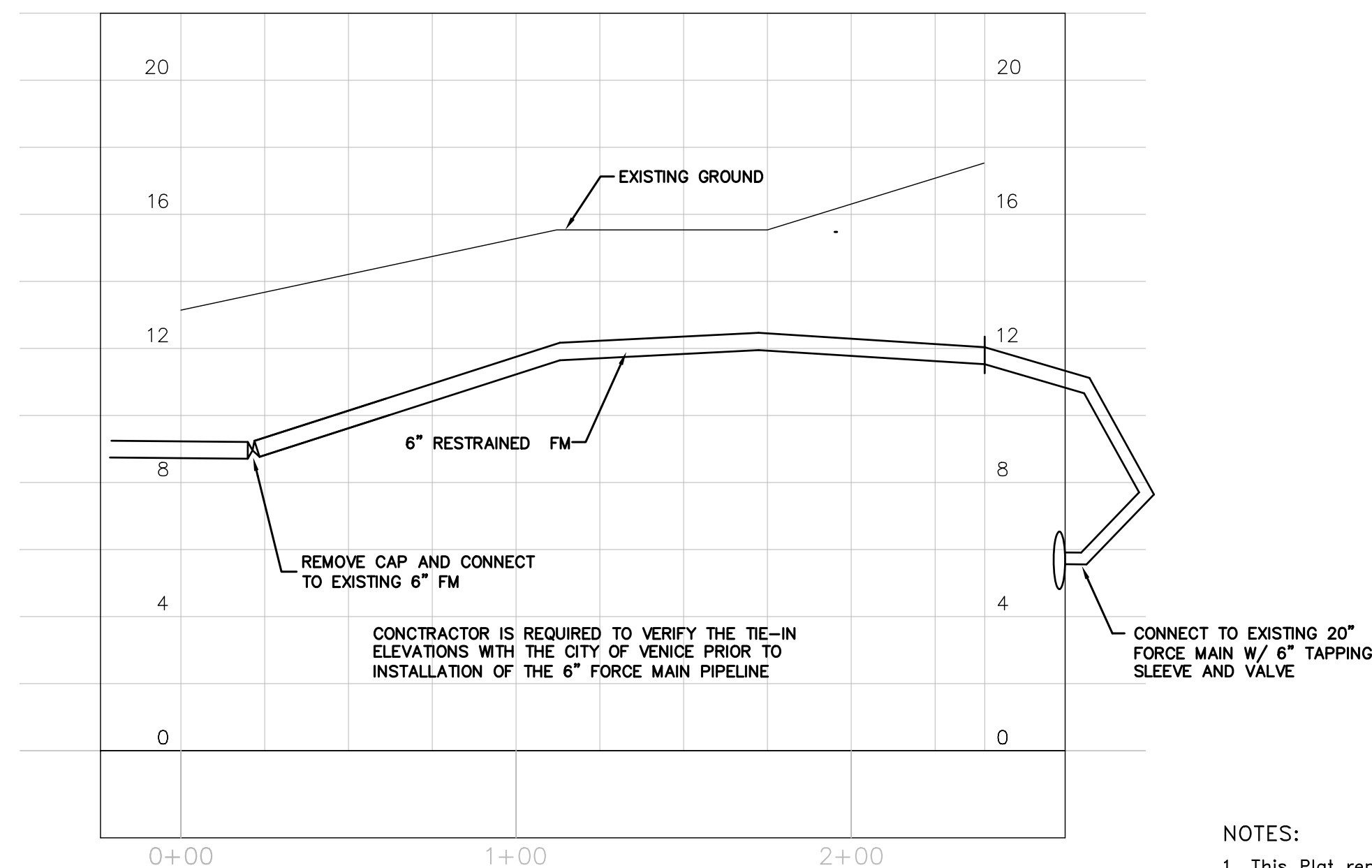
LEGEND

- PROPOSED FIRE HYDRANT ASSEMBLY (COST OF TEE NOT INCLUDED)
- WATER MAIN
- FORCE MAIN
- IRRIGATION MAIN
- RESTRAINED JOINT PIPE
- 45° VERTICAL BENDS (PLAN)
- DIRECTION OF FLOW
- SWING TIE CONTROL POINT
- SWING TIE POINT
- POST CONSTRUCTION GRADE ELEVATION

NOTE: IN-LINE VALVE IS NOT INCLUDED IN THE COST OF BLOW-OFF



RECORD DRAWINGS
February 17, 2023
APPROVED



- NOTES:**
- This Plat represents a Record Survey.
 - Surveyors Certification is limited to Record Information. (BOLD PRINT)
Base drawing is by others. (GREY PRINT)
 - All Dimensions and Elevations shown hereon are in feet, unless otherwise noted.

DATE: January 22, 2023

Randall E. Britt, Professional Land Surveyor
 Florida Certification Number 3979
 Note: Not Valid Unless Imprinted With Embossed Land Surveyor's Seal

THE PRESENCE OF GROUNDWATER SHOULD BE ANTICIPATED ON THIS PROJECT. CONTRACTOR'S BID SHALL INCLUDE CONSIDERATION FOR ADDRESSING THIS ISSUE.

CALL 2 WORKING DAYS BEFORE YOU DIG
811
 IT'S THE LAW!
 DIAL 811 Know what's below. Call before you dig.
 SUNSHINE STATE ONE CALL OF FLORIDA, INC.

OFFSITE FORCE MAIN

BRITT SURVEYING, INC.
 LAND SURVEYORS AND MAPPERS
 CERTIFICATE OF AUTHORIZATION NO. LB 6638
 680 US 41 Bypass N., Suite #1, Venice, Florida, 34285
 Telephone: (941) 493-1396
 Email: bs@brittsurveying.com

RECORD DRAWING

CURRY LANE IMPROVEMENTS PREPARED FOR CAH DEVELOPMENTS, LLC
 CITY OF VENICE

OFFSITE FORCE MAIN

KHA PROJECT 043490000
 DATE DECEMBER 2021
 SCALE AS SHOWN
 DESIGNED BY KHA
 DRAWN BY DWA
 CHECKED BY KCK
 DATE:

LICENSED PROFESSIONAL
 RYAN R. HOPPE, P.E.
 FL LICENSE NUMBER 79400

Kimley»Horn
 1777 MAIN STREET, SUITE 200, SARASOTA, FL 34236
 PHONE (841) 376-7600
 WWW.KIMLEYHORN.COM REGISTRY NO. 686

No.	REVISIONS	DATE	BY

