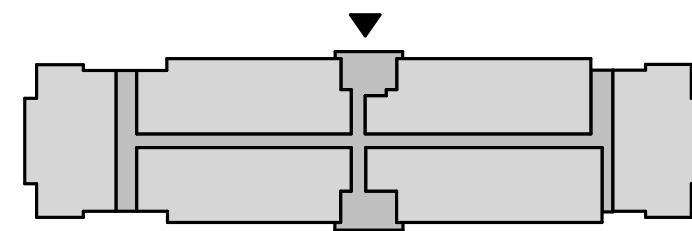




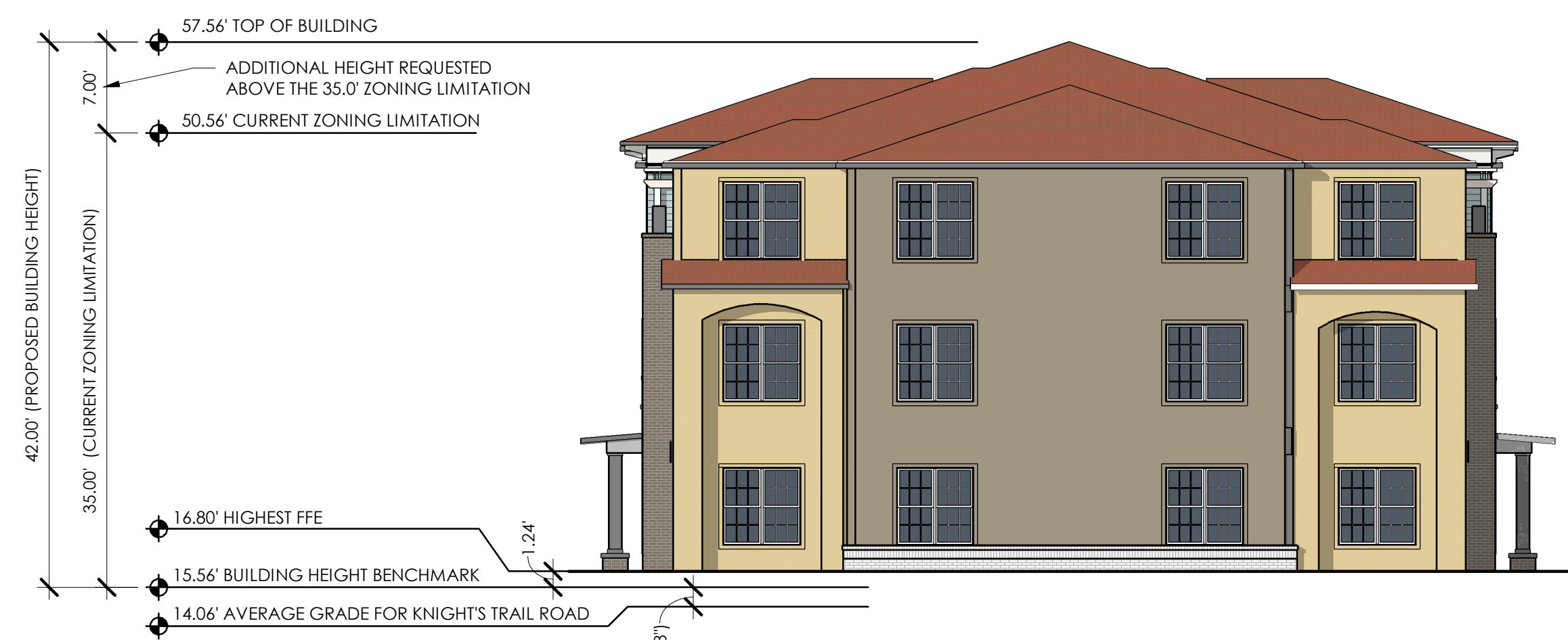
4 REAR ELEVATION
1" = 10'-0"



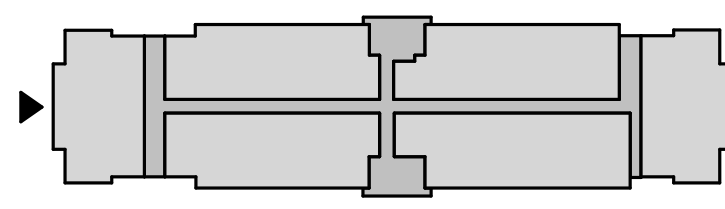
EXTERIOR MATERIAL LEGEND

-  **STUCCO #1**
SHERWIN WILLIAMS COLOR:
HONEYPOT SW 9663
-  **STUCCO #2**
SHERWIN WILLIAMS COLOR:
FAWN BRINDLE SW 7640
-  **TRIM**
SHERWIN WILLIAMS COLOR:
WHITE SNOW SW 9541
-  **BRICK #1**
SOUTH ALABAMA BRICK CO.
TAYLOR CLAY COMM. COLLECTION
COLOR: PEARL GRAY
-  **BRICK #2**
SOUTH ALABAMA BRICK CO.
TAYLOR CLAY COMM. COLLECTION
COLOR: AUTUMN BLEND 372
-  **LAP SIDING**
JAMES HARDIE - HARDIE PLANK
COLOR: SWEETWATER
-  **ASPHALT SHINGLE**
OWENS CORNING DURATION
COLOR: TERRA COTTA

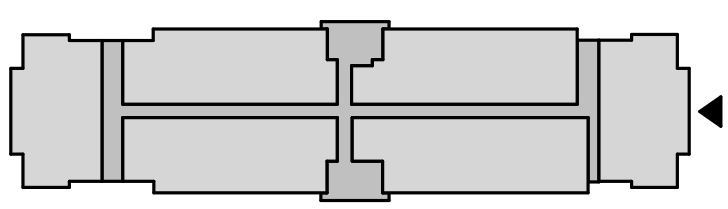
MATERIALS AND COLOR SELECTION REPRESENT THE BASIS OF DESIGN AND NOT NECESSARILY THE FINAL PRODUCT CHOICE. ARCHITECT AND OWNER TO REVIEW AND APPROVE MATERIAL SAMPLES.



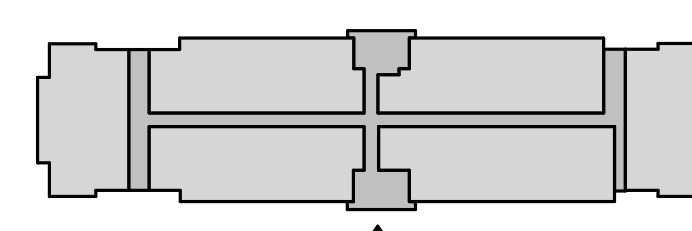
3 LEFT ELEVATION
1" = 10'-0"



2 RIGHT ELEVATION
1" = 10'-0"



1 FRONT ELEVATION
1" = 10'-0"



STAMP:

CLIENT:
CSP APARTMENTS
64 COMMERCIAL ST., STE 401
ROCHESTER, NY 14614

Passero Associates

4730 CASA COLA WAY, SUITE 200 (904) 757-6106
ST. AUGUSTINE, FL 32095
PROJECT MANAGER: J. WHITE, J. VOLLENWEIDER
PROJECT ARCHITECT: JAMES LENK
DESIGNER: AP, CCC, KK, AIC

NO.	DATE	BY	DESCRIPTION

UNAUTHORIZED ALTERATIONS OR ADDITIONS TO THIS DRAWING IS IN VIOLATION OF STATE EDUCATION LAW ARTICLE 145 SECTION 7209 AND ARTICLE 147 SECTION 7307, THESE PLANS ARE COPYRIGHT PROTECTED. ©

EXTERIOR ELEVATIONS

KNIGHTS TRAIL RD

KNIGHTS TRAIL APARTMENTS

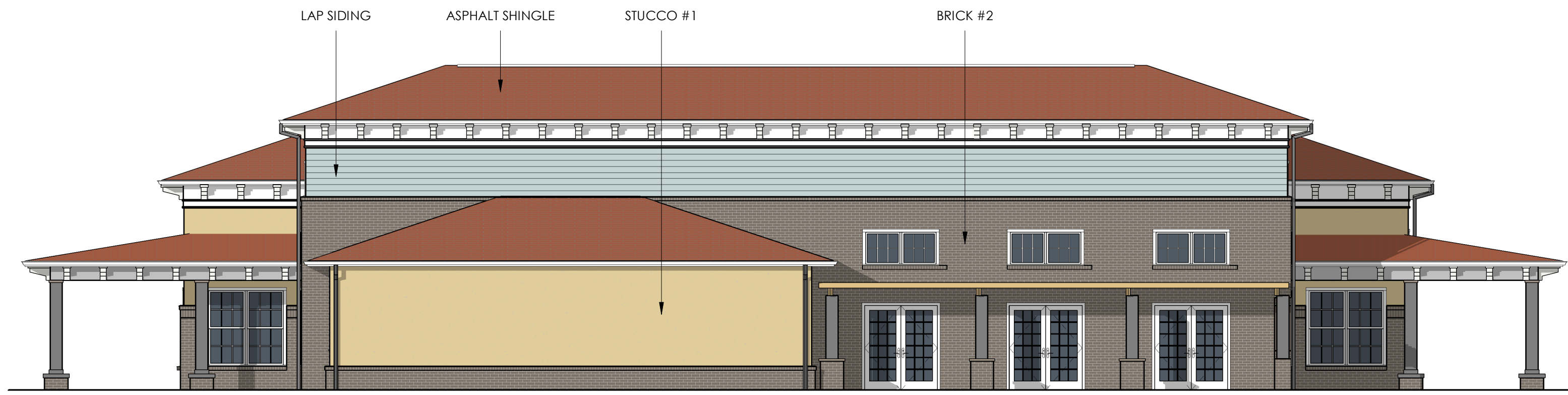
TOWN/CITY: NOKOMIS
COUNTY: SARASOTA STATE: FL

PROJECT NO.:
20213179.0001

DRAWING NO.:
.A-200

DATE:
SEPTEMBER 15, 2022

APARTMENTS - DD PROGRESS SET



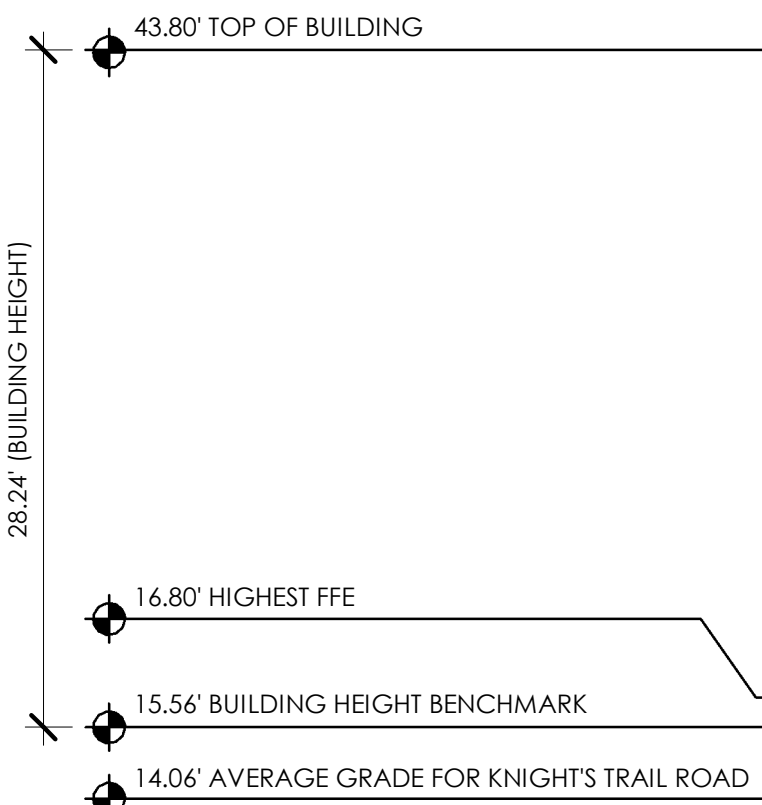
4 CLUBHOUSE RIGHT ELEVATION
1/8" = 1'-0"



3 CLUBHOUSE REAR ELEVATION
1/8" = 1'-0"



2 CLUBHOUSE LEFT ELEVATION
1/8" = 1'-0"



1 CLUBHOUSE FRONT ELEVATION
1/8" = 1'-0"

EXTERIOR MATERIAL LEGEND

-  **STUCCO #1**
SHERWIN WILLIAMS COLOR:
HONEYPOT SW 9663
-  **STUCCO #2**
SHERWIN WILLIAMS COLOR:
FAWN BRINDLE SW 7640
-  **TRIM**
SHERWIN WILLIAMS COLOR:
WHITE SNOW SW 9541
-  **BRICK #1**
SOUTH ALABAMA BRICK CO.
TAYLOR CLAY COMM. COLLECTION
COLOR: PEARL GRAY
-  **BRICK #2**
SOUTH ALABAMA BRICK CO.
TAYLOR CLAY COMM. COLLECTION
COLOR: AUTUMN BLEND 372
-  **LAP SIDING**
JAMES HARDIE - HARDIE PLANK
COLOR: SWEETWATER
-  **ASPHALT SHINGLE**
OWENS CORNING DURATION
COLOR: TERRA COTTA

MATERIALS AND COLOR SELECTION REPRESENT THE BASIS OF DESIGN AND NOT NECESSARILY THE FINAL PRODUCT CHOICE. ARCHITECT AND OWNER TO REVIEW AND APPROVE MATERIAL SAMPLES.

CLUBHOUSE - DD PROGRESS SET

STAMP:

CLIENT:
CSP APARTMENTS
64 COMMERCIAL ST., STE 401
ROCHESTER, NY 14614

Passero Associates

4730 CASA COLA WAY, SUITE 200 (904) 757-6106
ST. AUGUSTINE, FL 32095

NO.	DATE	BY	DESCRIPTION

UNAUTHORIZED ALTERATIONS OR ADDITIONS TO THIS DRAWING IS IN VIOLATION OF STATE EDUCATION LAW ARTICLE 145 SECTION 7209 AND ARTICLE 147 SECTION 7307, THESE PLANS ARE COPYRIGHT PROTECTED. ©

EXTERIOR ELEVATIONS - CLUBHOUSE

KNIGHTS TRAIL RD

KNIGHTS TRAIL - AMENITIES

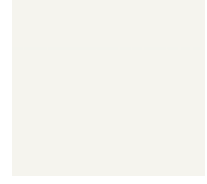

TOWN/CITY: NOKOMIS
COUNTY: SARASOTA STATE: FL

PROJECT NO.: 20213179.0001

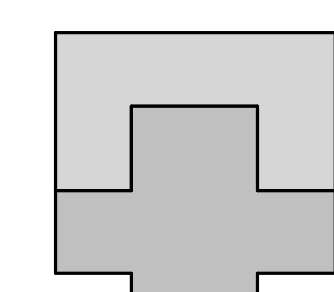
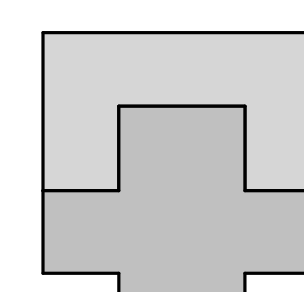
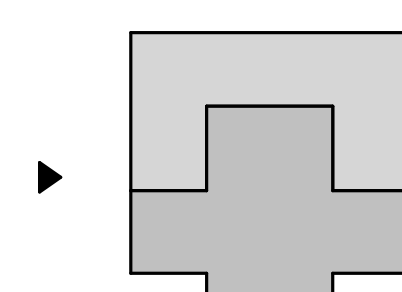
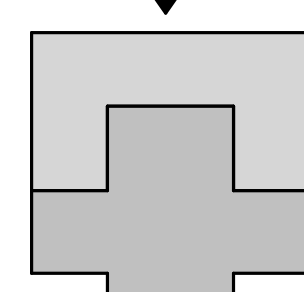
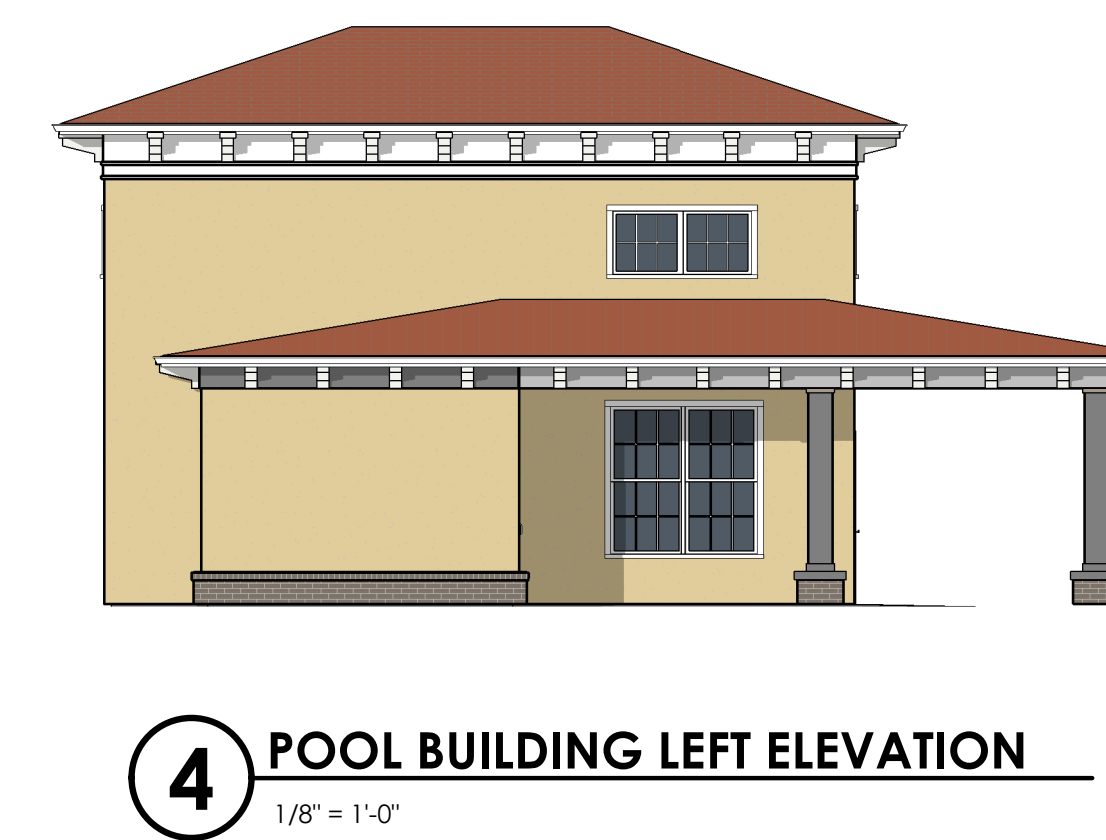
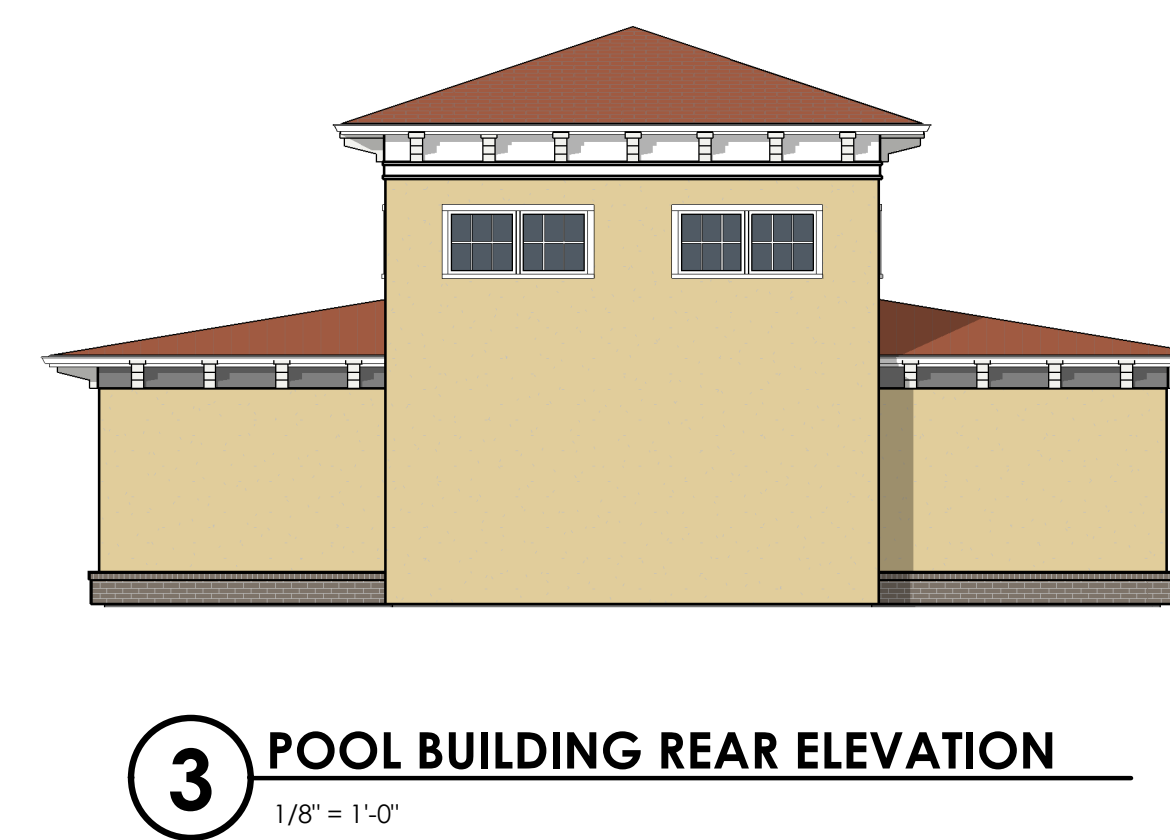
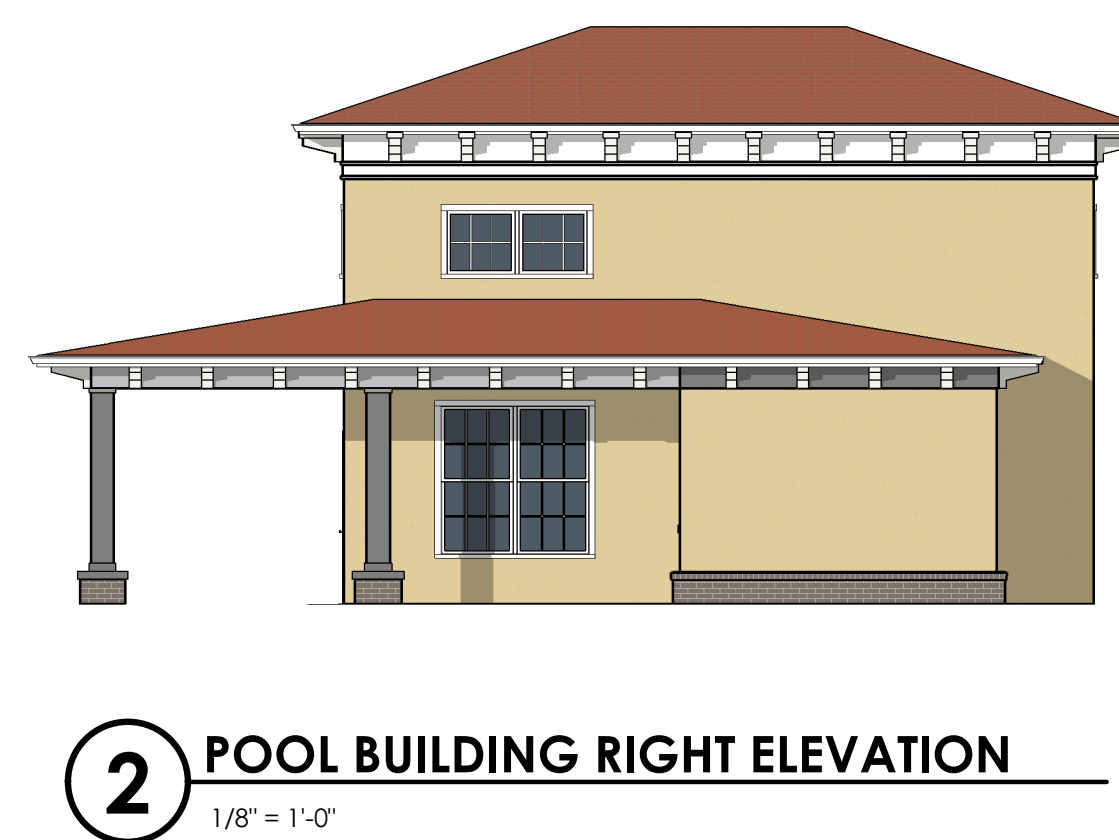
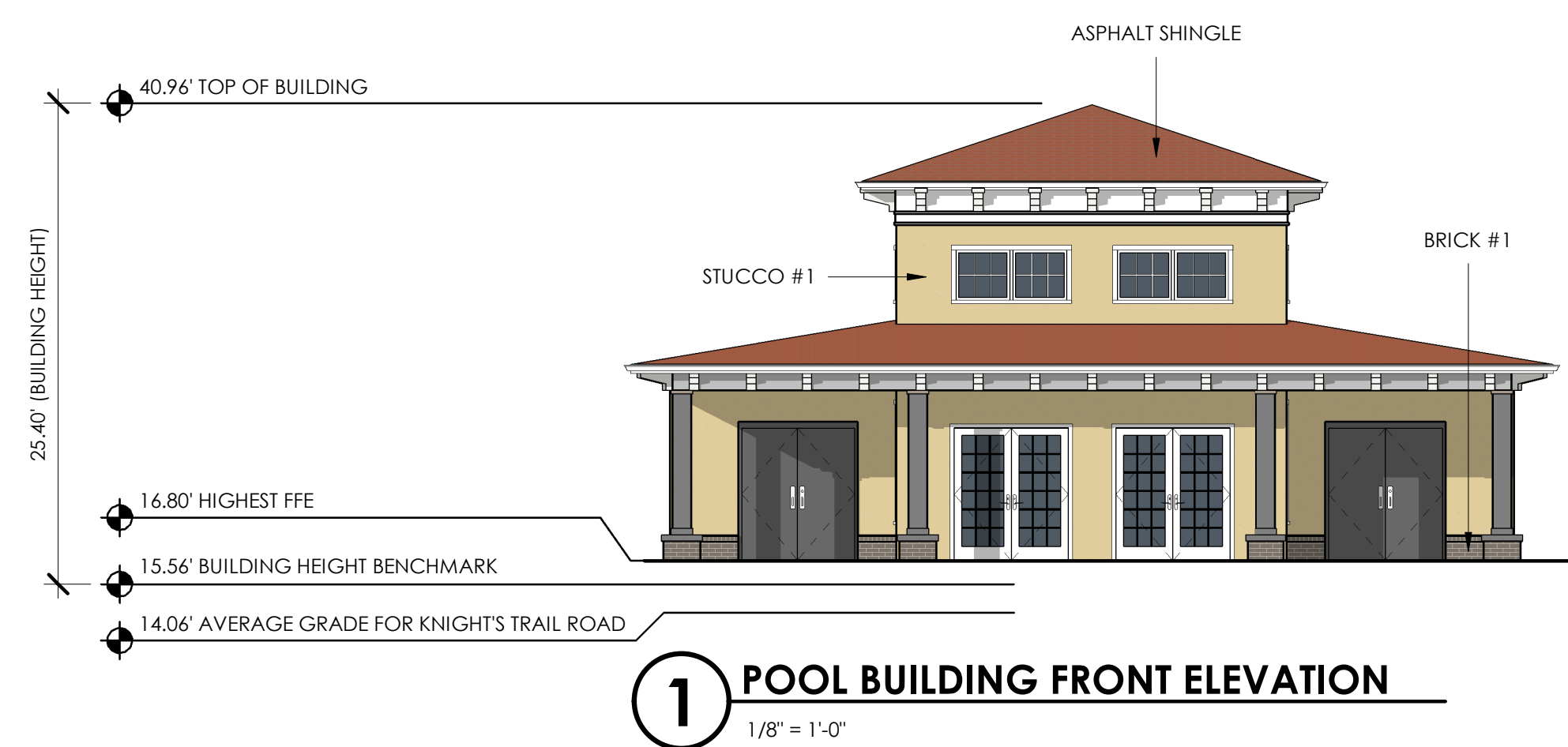
DRAWING NO.: .AB-200

DATE: SEPTEMBER 15, 2022

EXTERIOR MATERIAL LEGEND

-  **STUCCO #1**
 SHERWIN WILLIAMS COLOR:
 HONEYPOT SW 9663
-  **STUCCO #2**
 SHERWIN WILLIAMS COLOR:
 FAWN BRINDLE SW 7640
-  **TRIM**
 SHERWIN WILLIAMS COLOR:
 WHITE SNOW SW 9541
-  **BRICK #1**
 SOUTH ALABAMA BRICK CO.
 TAYLOR CLAY COMM. COLLECTION
 COLOR: PEARL GRAY
-  **BRICK #2**
 SOUTH ALABAMA BRICK CO.
 TAYLOR CLAY COMM. COLLECTION
 COLOR: AUTUMN BLEND 372
-  **LAP SIDING**
 JAMES HARDIE - HARDIE PLANK
 COLOR: SWEETWATER
-  **ASPHALT SHINGLE**
 OWENS CORNING DURATION
 COLOR: TERRA COTTA

MATERIALS AND COLOR SELECTION REPRESENT THE BASIS OF DESIGN AND NOT NECESSARILY THE FINAL PRODUCT CHOICE. ARCHITECT AND OWNER TO REVIEW AND APPROVE MATERIAL SAMPLES.



CLUBHOUSE - DD PROGRESS SET

STAMP:

CLIENT:
 CSP APARTMENTS
 64 COMMERCIAL ST., STE 401
 ROCHESTER, NY 14614

Passero Associates
 4730 CASA COLA WAY, SUITE 200 (904) 757-6106
 ST. AUGUSTINE, FL 32095

PROJECT MANAGER: J. WHITE, J. VOLLENWEIDER
 PROJECT ARCHITECT: JAMES LENK
 DESIGNER: AP, CC, KK, MC

NO.	DATE	BY	DESCRIPTION

UNAUTHORIZED ALTERATIONS OR ADDITIONS TO THIS DRAWING IS IN VIOLATION OF STATE EDUCATION LAW ARTICLE 545 SECTION 7209 AND ARTICLE 147 SECTION 7307, THESE PLANS ARE COPYRIGHT PROTECTED. ©

ELEVATIONS - POOL BUILDING

KNIGHTS TRAIL RD

KNIGHTS TRAIL - AMENITIES

TOWN/CITY: NOKOMIS
 COUNTY: SARASOTA STATE: FL

PROJECT NO.: 20213179.0001

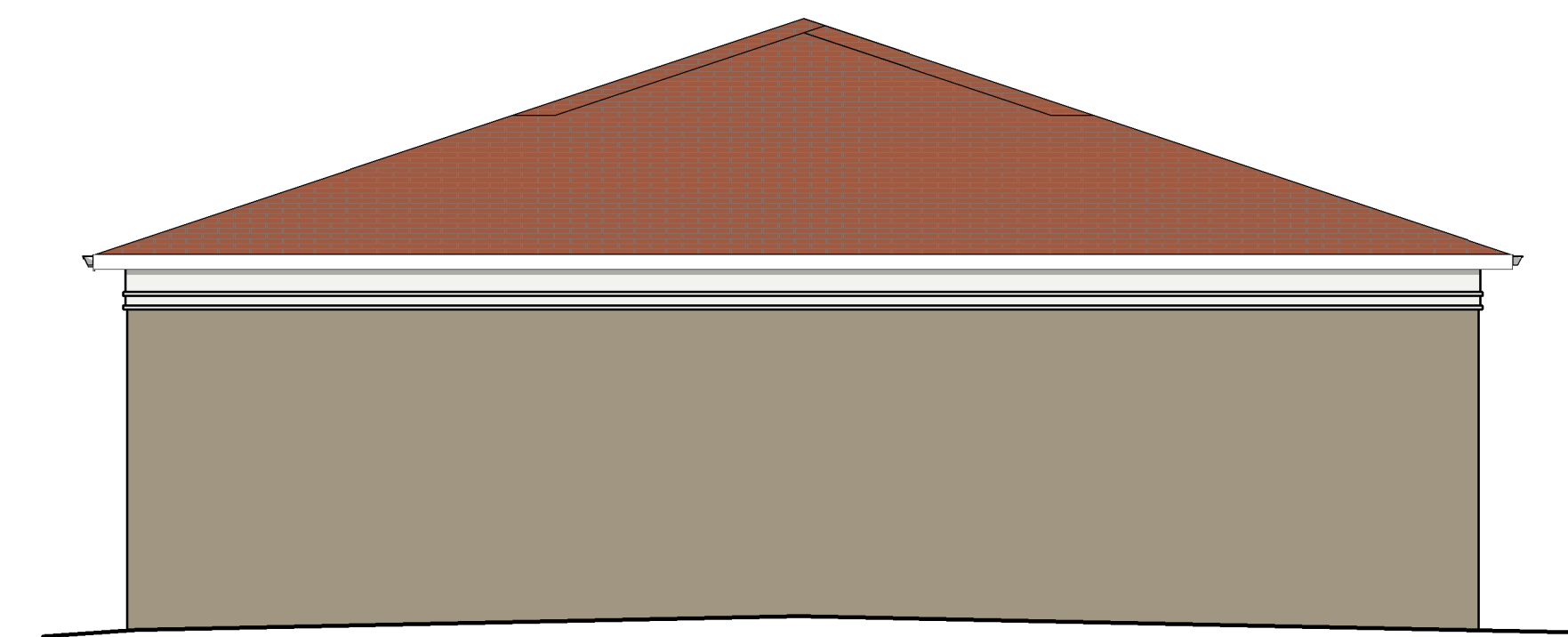
DRAWING NO.: .AC-101

DATE: SEPTEMBER 15, 2022

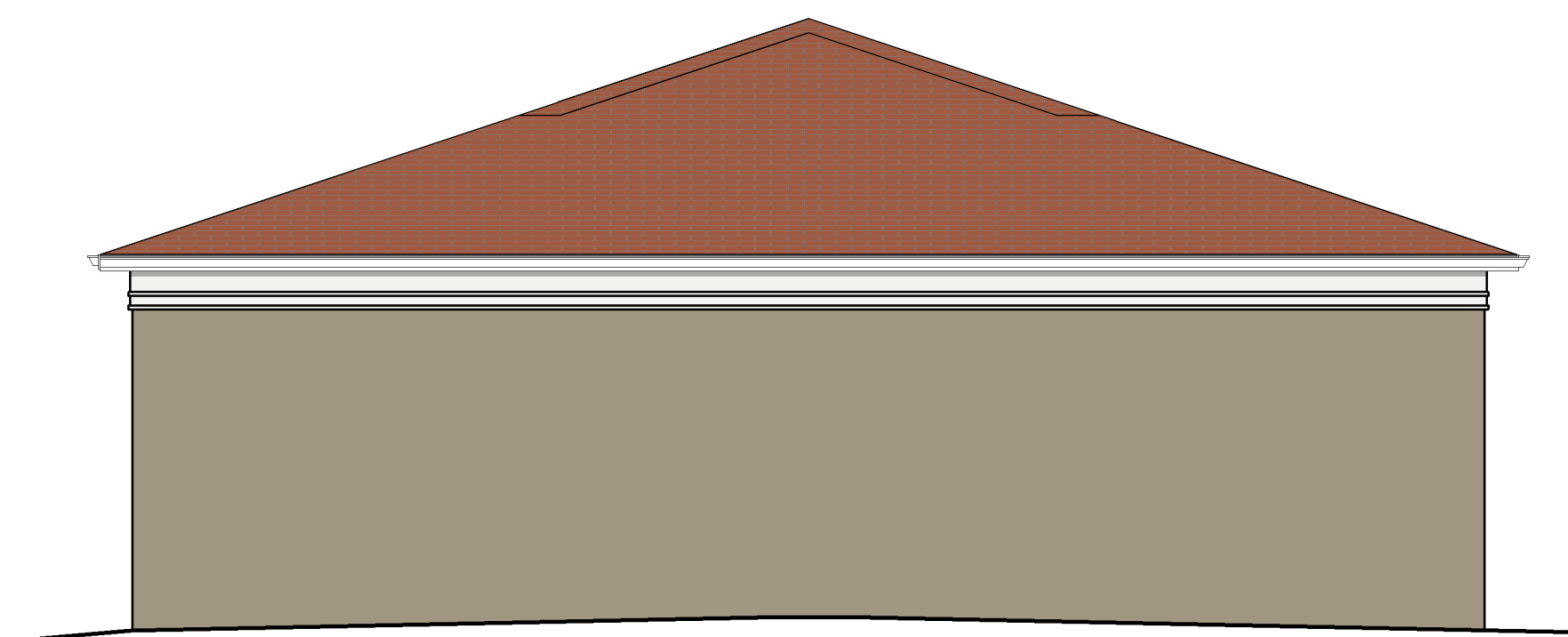
EXTERIOR MATERIAL LEGEND

-  **STUCCO #1**
SHERWIN WILLIAMS COLOR:
HONEYPOT SW 9663
-  **STUCCO #2**
SHERWIN WILLIAMS COLOR:
FAWN BRINDLE SW 7640
-  **TRIM**
SHERWIN WILLIAMS COLOR:
WHITE SNOW SW 9541
-  **BRICK #1**
SOUTH ALABAMA BRICK CO.
TAYLOR CLAY COMM. COLLECTION
COLOR: PEARL GRAY
-  **BRICK #2**
SOUTH ALABAMA BRICK CO.
TAYLOR CLAY COMM. COLLECTION
COLOR: AUTUMN BLEND 372
-  **LAP SIDING**
JAMES HARDIE - HARDIE PLANK
COLOR: SWEETWATER
-  **ASPHALT SHINGLE**
OWENS CORNING DURATION
COLOR: TERRA COTTA

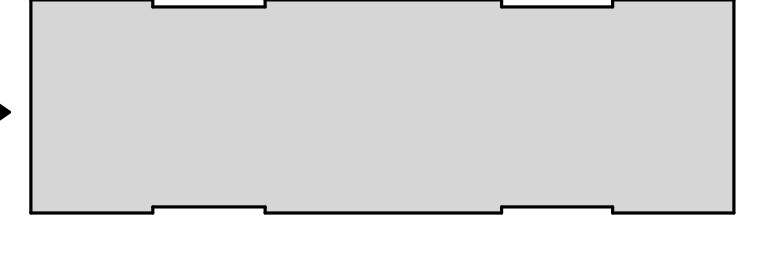
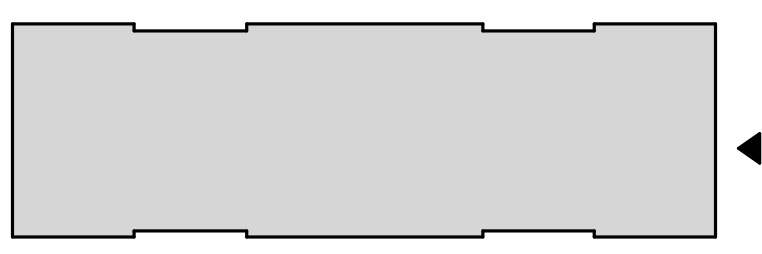
MATERIALS AND COLOR SELECTION REPRESENT THE BASIS OF DESIGN AND NOT NECESSARILY THE FINAL PRODUCT CHOICE. ARCHITECT AND OWNER TO REVIEW AND APPROVE MATERIAL SAMPLES.



3 DOUBLE GARAGE - RIGHT ELEVATION
3/16" = 1'-0"



2 DOUBLE GARAGE - LEFT ELEVATION
3/16" = 1'-0"



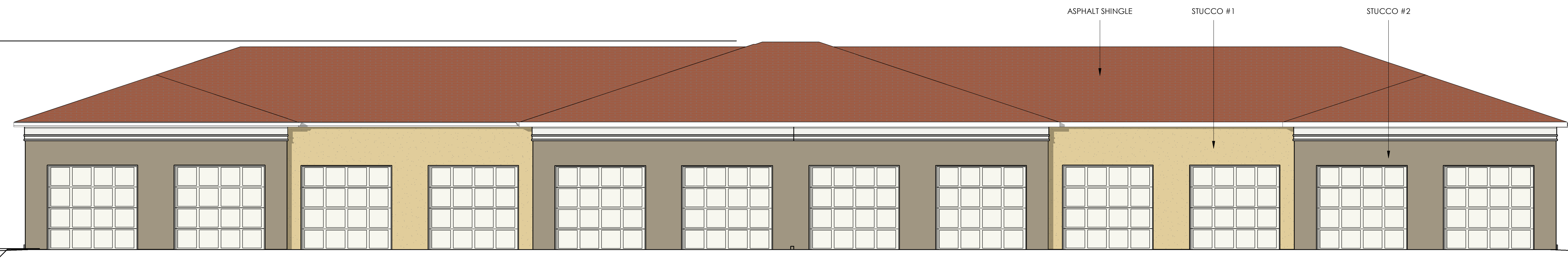
19.12' (BUILDING HEIGHT)

34.68' TOP OF BUILDING

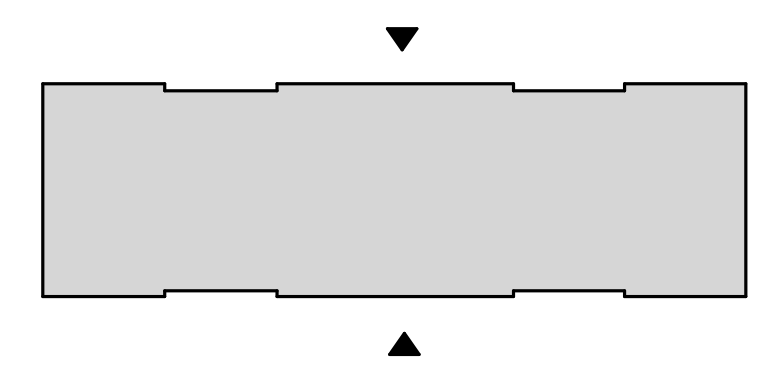
15.56' BUILDING HEIGHT BENCHMARK

15.50' HIGHEST FFE

14.06' AVERAGE GRADE FOR KNIGHTS TRAIL ROAD



1 DOUBLE GARAGE FRONT/REAR ELEVATION
3/16" = 1'-0"



GARAGES - DD PROGRESS SET

STAMP:

CLIENT:
CSP APARTMENTS
64 COMMERCIAL ST., STE 401
ROCHESTER, NY 14614

Passero Associates

4730 CASA COLA WAY, SUITE 200 (904) 757-6106
ST. AUGUSTINE, FL 32095

PROJECT MANAGER: J. WHITE, J. VOLLENWEIDER
PROJECT ARCHITECT: JAMES LENK
DESIGNER: AP, CC, KK, MC

NO.	DATE	BY	DESCRIPTION

UNAUTHORIZED ALTERATIONS OR ADDITIONS TO THIS DRAWING IS IN VIOLATION OF STATE EDUCATION LAW ARTICLE 545 SECTION 7209 AND ARTICLE 147 SECTION 7307, THESE PLANS ARE COPYRIGHT PROTECTED. ©

EXTERIOR ELEVATIONS - DOUBLE GARAGE
KNIGHTS TRAIL RD

KNIGHTS TRAIL - GARAGES

TOWN/CITY: NOKOMIS
COUNTY: SARASOTA STATE: FL

PROJECT NO.: 20213179.0001

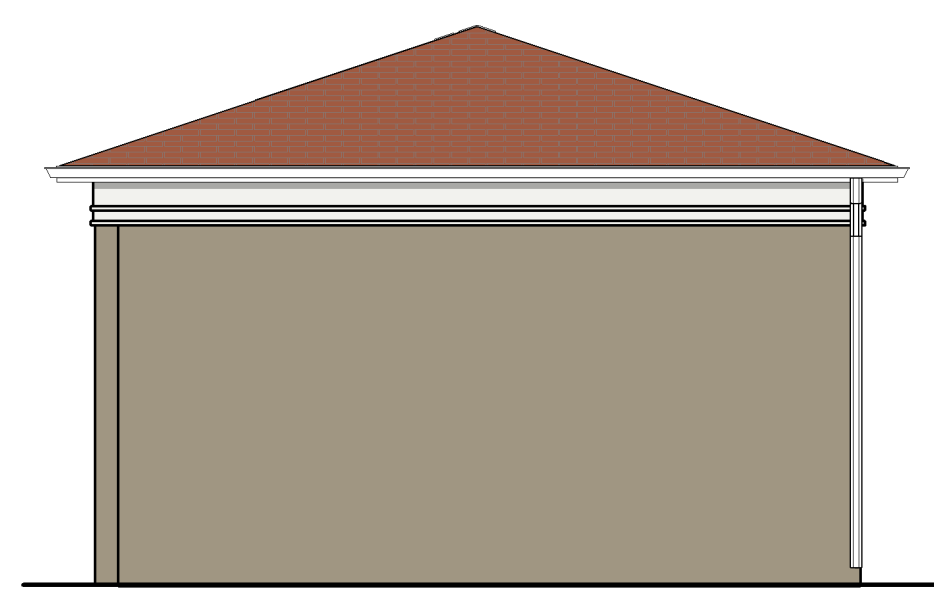
DRAWING NO.: .AD-200

DATE: SEPTEMBER 15, 2022

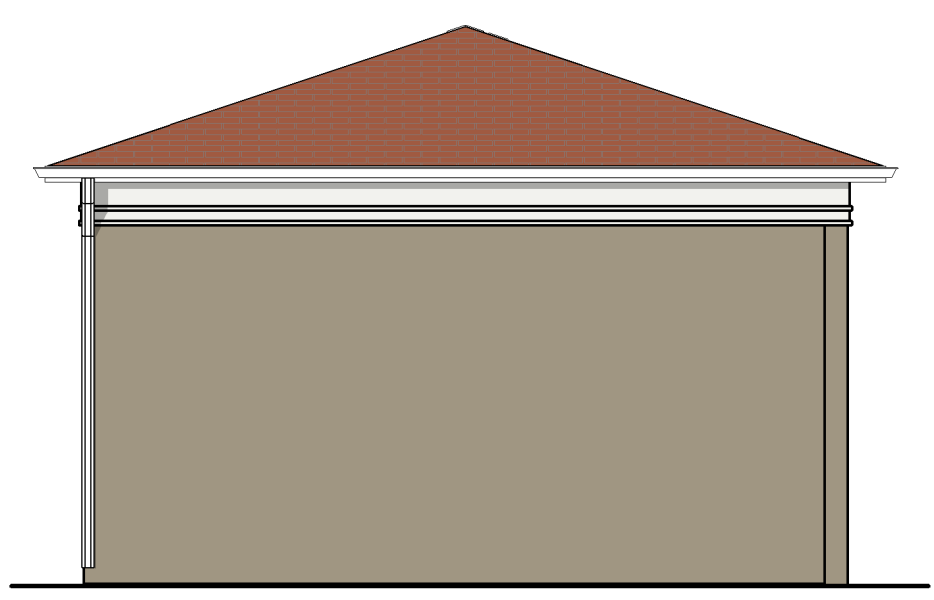
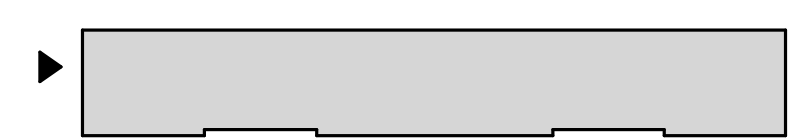
EXTERIOR MATERIAL LEGEND

-  **STUCCO #1**
 SHERWIN WILLIAMS COLOR:
 HONEYPOT SW 9663
-  **STUCCO #2**
 SHERWIN WILLIAMS COLOR:
 FAWN BRINDLE SW 7640
-  **TRIM**
 SHERWIN WILLIAMS COLOR:
 WHITE SNOW SW 9541
-  **BRICK #1**
 SOUTH ALABAMA BRICK CO.
 TAYLOR CLAY COMM. COLLECTION
 COLOR: PEARL GRAY
-  **BRICK #2**
 SOUTH ALABAMA BRICK CO.
 TAYLOR CLAY COMM. COLLECTION
 COLOR: AUTUMN BLEND 372
-  **LAP SIDING**
 JAMES HARDIE - HARDIE PLANK
 COLOR: SWEETWATER
-  **ASPHALT SHINGLE**
 OWENS CORNING DURATION
 COLOR: TERRA COTTA

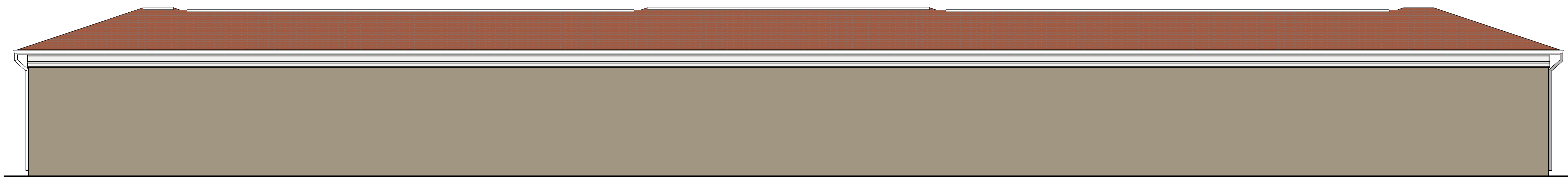
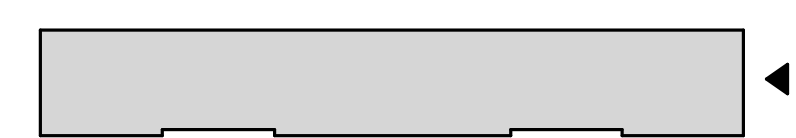
MATERIALS AND COLOR SELECTION REPRESENT THE BASIS OF DESIGN AND NOT NECESSARILY THE FINAL PRODUCT CHOICE. ARCHITECT AND OWNER TO REVIEW AND APPROVE MATERIAL SAMPLES.



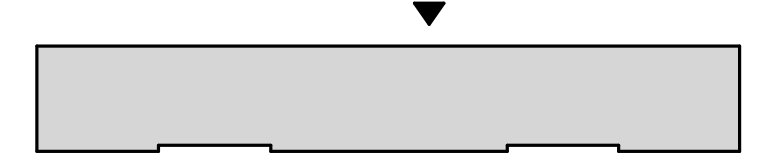
4 SINGLE GARAGE - LEFT ELEVATION
 3/16" = 1'-0"



3 SINGLE GARAGE - RIGHT ELEVATION
 3/16" = 1'-0"



2 SINGLE GARAGE - REAR ELEVATION
 3/16" = 1'-0"



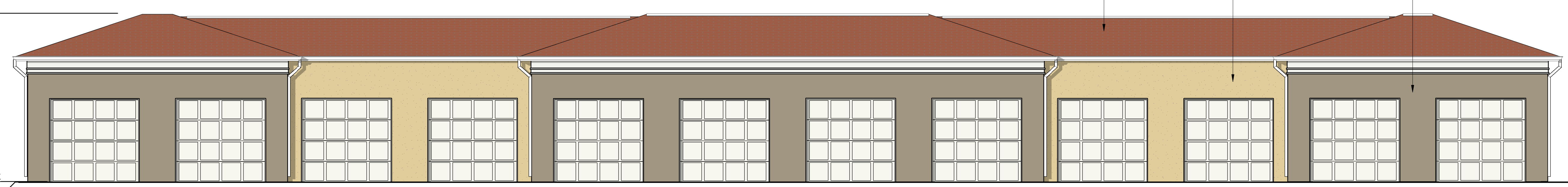
31.13' TOP OF BUILDING

15.57' (BUILDING HEIGHT)

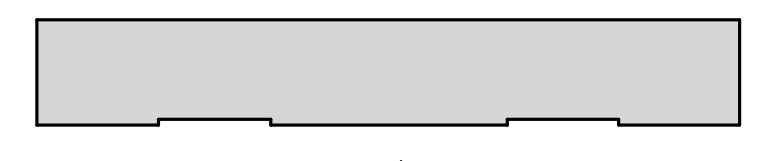
15.56' BUILDING HEIGHT BENCHMARK

15.50' HIGHEST FFE

14.06' AVERAGE GRADE FOR KNIGHTS TRAIL ROAD



1 SINGLE GARAGE - FRONT ELEVATION
 3/16" = 1'-0"



GARAGES - DD PROGRESS SET

STAMP:

CLIENT:
 CSP APARTMENTS
 64 COMMERCIAL ST., STE 401
 ROCHESTER, NY 14614

Passero Associates

4730 CASA COLA WAY, SUITE 200 (904) 757-6106
 ST. AUGUSTINE, FL 32095

PROJECT MANAGER: J. WHITE, J. VOLLENWEIDER
 PROJECT ARCHITECT: JAMES LENK
 DESIGNER: AP, CC, KK, MC

NO.	DATE	BY	DESCRIPTION

UNAUTHORIZED ALTERATIONS OR ADDITIONS TO THIS DRAWING IS IN VIOLATION OF STATE EDUCATION LAW ARTICLE 545 SECTION 7209 AND ARTICLE 147 SECTION 7307, THESE PLANS ARE COPYRIGHT PROTECTED. ©

EXTERIOR ELEVATIONS - SINGLE GARAGE

KNIGHTS TRAIL RD

KNIGHTS TRAIL - GARAGES

TOWN/CITY: NOKOMIS
 COUNTY: SARASOTA STATE: FL

PROJECT NO.: 20213179.0001

DRAWING NO.: .AD-201

DATE: SEPTEMBER 15, 2022