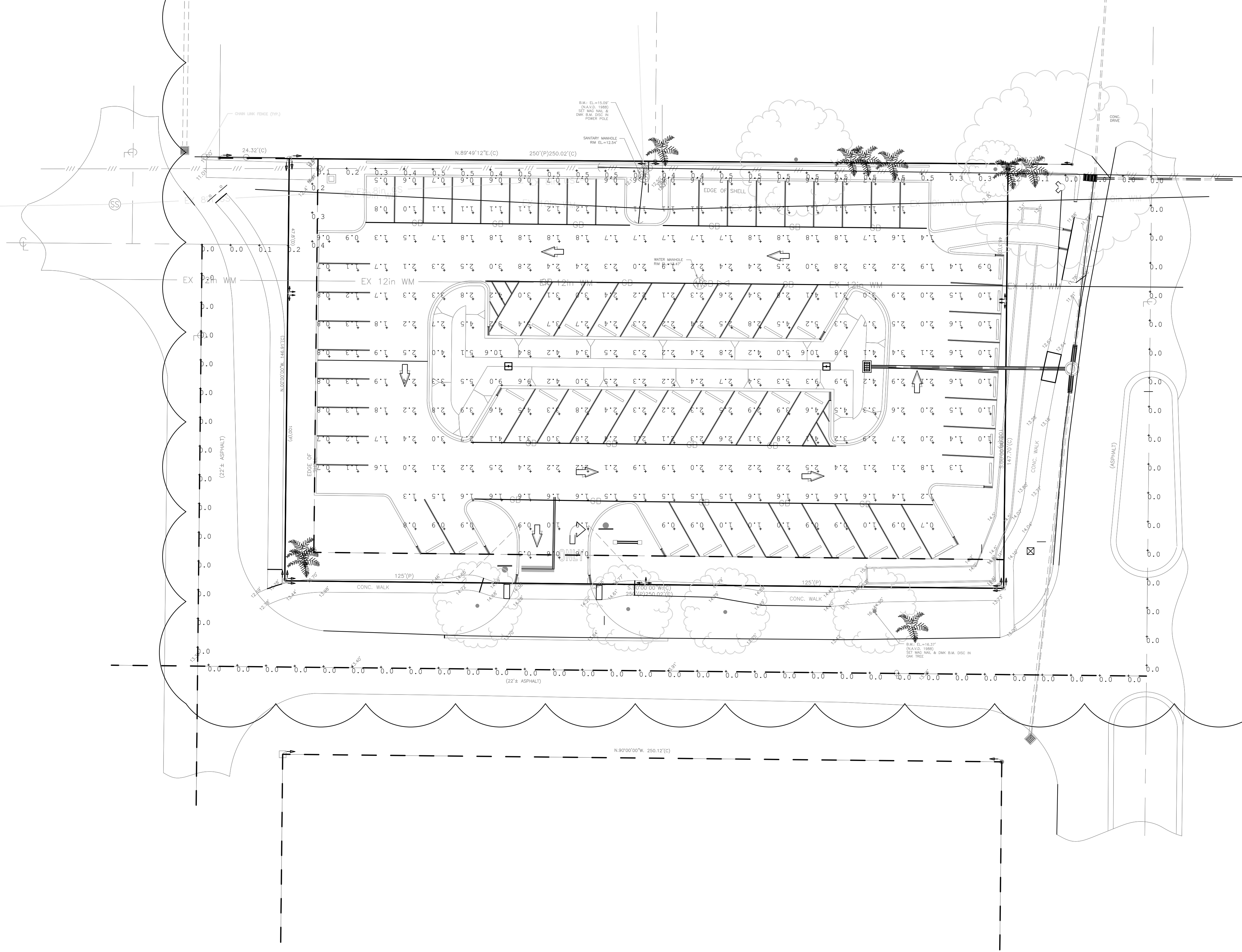


HOURS OF OPERATION

SITE LIGHTING WILL BE CONTROLLED BY A PHOTOCELL AND OPERATE FROM DUSK TO DAWN.

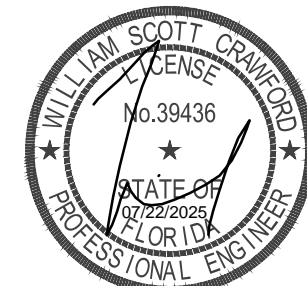
Luminaire Schedule								
Symbol	Qty	Label	Arrangement	Description	Tag	LLF	Luminaire Lumens	Luminaire Watts
⏏	2	SL	Back-Back	BEACON LED TWIN AREA LIGHT #VP-1-160-4K7-5QW MOUNTED ON 20' POLE		0.950	19033	158

Calculation Summary								
Label	CalcType	Units	Avg	Max	Min	Avg/Min	Max/Min	
PARKING LOT	Illuminance	Fc	2.27	10.6	0.5	4.54	21.20	
PROPERTY LINE	Illuminance	Fc	0.12	0.5	0.0	N.A.	N.A.	



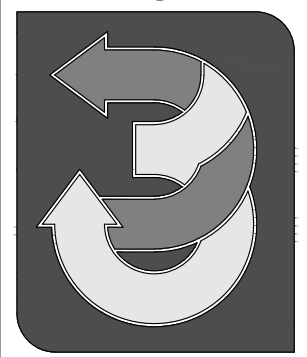
ELECTRICAL SITE -
PHOTOMETRIC PLAN

1 SCALE: 1" = 20'



WM. SCOTT CRAWFORD
P.E. 39436

MECHANICAL
ELECTRICAL
PLUMBING
& FIRE
ENGINEERING, Inc.
CA 7029
6989 PROFESSIONAL PKWY. E.
SARASOTA, FLORIDA 34240
tel (941) 907-0103 fax (941) 907-0152



A PHOTOMETRIC PLAN FOR:
EPIPHANY CATHEDRAL
CATHOLIC CHURCH
PARKING LOT EXPANSION
225 N. HARBOR VENUE, FLORIDA

ELECTRICAL
PHOTOMETRIC PLAN

© 2024 CRAWFORD WILLIAMS ENGINEERING, INC.

Revisions:	12/10/2024
1 CITY COMMENTS	07/22/2024
2 SITE UPDATE	
3	
4	
5	

Project No:	-
Drawn:	GAC
Checked:	WSC
Scale:	
Date:	07.22.2024

Sheet No.:

E1.00

TO THE BEST OF THE ENGINEER'S KNOWLEDGE, SAID PLANS AND SPECIFICATIONS COMPLY WITH THE APPLICABLE BUILDING CODES AND THE APPLICABLE MINIMUM FIRE SAFETY STANDARDS AS DETERMINED IN ACCORDANCE WITH CHAPTERS 553 AND 633, FLORIDA STATUTES



VIPER Area/Site

VIPER LUMINAIRE

FEATURES

- Low profile LED area/site luminaire with a variety of IES distributions for lighting applications such as auto dealership, retail, commercial, and campus parking lots
- Featuring two different optical technologies, Strike and Micro Strike Optics, which provide the best distribution patterns for retrofit or new construction
- Rated for high vibration applications including bridges and overpasses. All sizes are rated for 1.5G
- Control options including photo control, occupancy sensing, NX Lighting Controls™, LightGRID+ and 7-Pin with networked controls
- New customizable lumen output feature allows for the wattage and lumen output to be customized in the factory to meet whatever specification requirements may entail
- Field interchangeable mounting provides additional flexibility after the fixture has shipped



CONTROL TECHNOLOGY



LIGHTGRID+

SERVICE PROGRAMS

STOCK QS10

SPECIFICATIONS

- CONSTRUCTION**
 - Die-cast housing with hidden vertical heat fins are optimal for heat dissipation while keeping a clean smooth outer surface
 - Corrosion resistant, die-cast aluminum housing with 1000 hour powder coat paint finish
 - External hardware is corrosion resistant

OPTICS

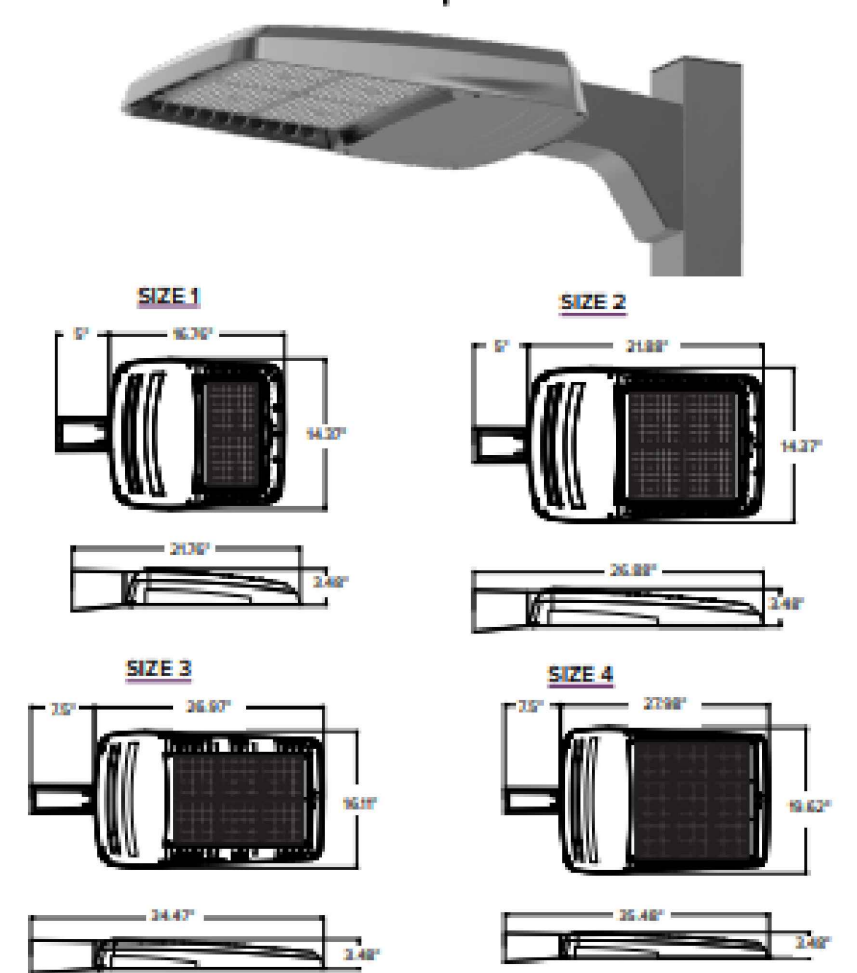
- Micro Strike Optics (160, 320, 480, or 720 LED counts) maximize uniformity in applications and come standard with mid-power LEDs which evenly illuminate the entire luminous surface area to provide a low glare appearance. Catalog logic found on page 2
- Strike Optics (36, 72, 108, or 162 LED counts) provide best in class distributions and maximum pole spacing in new applications with high powered LEDs. Strike optics are held in place with a polycarbonate bezel to mimic the appearance of the Micro Strike Optics so both solutions can be combined on the same application. Catalog logic found on page 3
- Both optics maximize target zone illumination with minimal losses at the house-side, reducing light trespass issues. Additional backlight control shields and house side shields can be added for further reduction of illumination behind the pole
- One-piece silicone gasket ensures a weatherproof seal
- Zero up-light at 0 degrees of tilt
- Field rotatable optics

INSTALLATION

- Mounting patterns for each arm can be found on page 11
- Optional universal mounting block for ease of installation during retrofit applications. Available as an option (ASQU) or accessory for square and round poles
- All mounting hardware included
- Knuckle arm fitter option available for 2-3/8" OD tenon
- For products with EPA less than 1 mounted to a pole greater than 20ft, a vibration damper is recommended

DATE:	LOCATION:
TYPE:	PROJECT:
CATALOG #:	

MICROSTRIKE | STRIKE



	EPA				Contg.
	VP1 (Size 1)	VP2 (Size 2)	VP3 (Size 3)	VP4 (Size 4)	
Single Fixture	0.454	0.555	0.655	0.688	
Two at 180	0.908	1.110	1.310	1.396	
Two at 90	0.583	0.711	0.857	0.948	
Three at 90	1.037	1.266	1.512	1.646	
Three at 120	0.943	1.155	1.392	1.680	
Four at 90	1.166	1.422	1.714	1.896	

CERTIFICATIONS

- DLC® (DesignLights Consortium Qualified), with some Premium Qualified configurations. Not all product variations listed in this document are DLC® qualified. Refer to <http://www.designlights.org> for the most up-to-date list.
- Listed to UL1598 and CSA C22.2#250.0-24 for wet locations and 40°C ambient temperatures
- 1.5 G rated for ANSI C136.31 high vibration applications
- Fixture is IP65 rated
- Meets ICA recommendations using 3K CCT configuration at 0 degrees of tilt
- This product meets federal procurement law requirements under the Buy American Act (FAR 52.225-9) and Trade Agreements Act (FAR 52.225-11). See Buy America(n) Solutions ([link to https://www.currentlighting.com/resources/american-solutions](https://www.currentlighting.com/resources/american-solutions)).

WARRANTY

- 5 year warranty

ELECTRICAL

- Universal 120-277 VAC or 347-480 VAC input voltage, 50/60 Hz
- Ambient operating temperature -40°C to 40°C
- Drivers have greater than 90% power factor and less than 20% THD
- LED drivers have output power over-voltage, over-current protection and short circuit protection with auto recovery
- Field replaceable surge protection device provides 20kA protection meeting ANSI/ IEEE C62.41.2 Category C High and Surge Location Category C3; Automatically takes fixture off-line for protection when device is compromised

CONTROLS

- Photo control, occupancy sensor programmable controls, and Zigbee wireless controls available for complete on/off and dimming control
- Please consult brand or sales representative when combining control and electrical options as some combinations may not operate as anticipated depending on your application
- 7-pin ANSI C136.41-2013 photocontrol receptacle option available for twist lock photocontrols or wireless control modules (control accessories sold separately)

CONTROLS (CONTINUED)

- 0-10V Dimming Drivers are standard and dimming leads are extended out of the luminaire unless control options require connection to the dimming leads. Must specify if wiring leads are to be greater than the 6" standard
- NX Lighting Controls™ available with in fixture wireless control module, features dimming and occupancy sensor
- LightGRID+ available with in fixture wireless control module, features dimming and occupancy sensor. Also available in 7-pin configuration



SSA-B Series Poles

SQUARE STRAIGHT ALUMINUM

DATE:	LOCATION:
TYPE:	PROJECT:
CATALOG #:	

SPECIFICATIONS

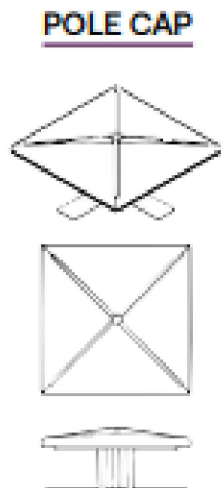
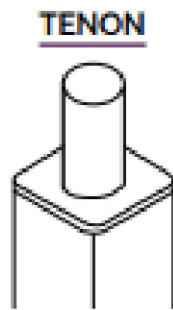
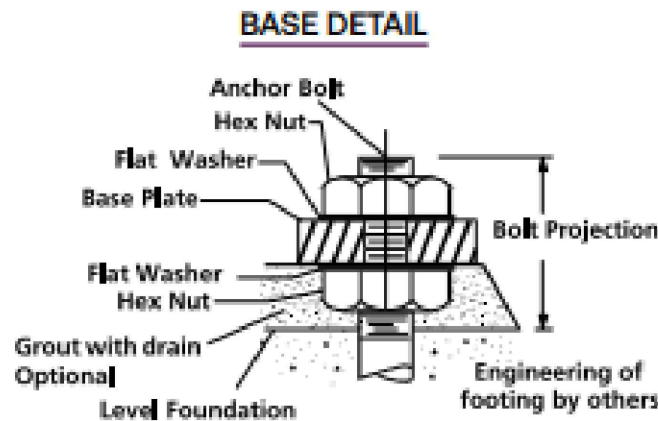
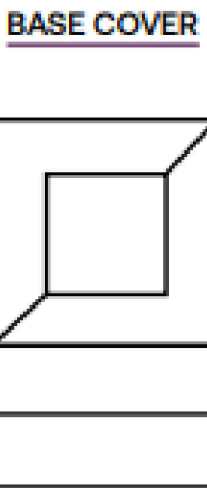
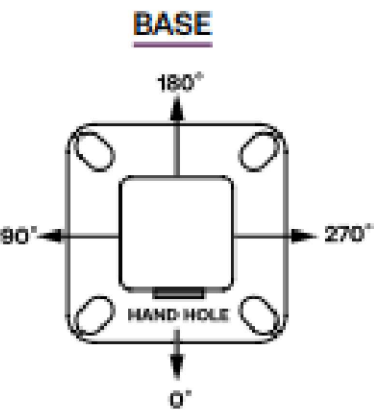
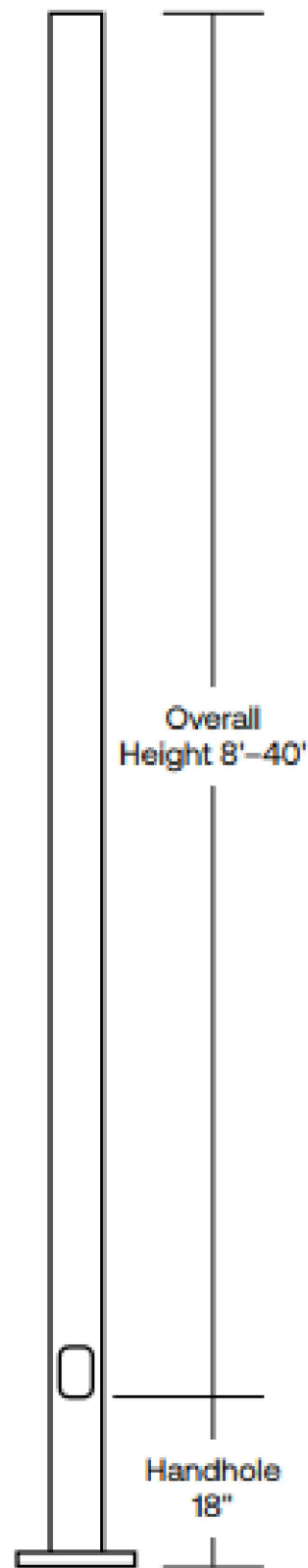
CONSTRUCTION

- Shaft: One-piece straight aluminum with square cross section, flat sides and minimum radius on all corners; Extruded shafts of 6061-T6 aluminum in 1/8", 3/16", or 1/4" thickness. Base plate of 356 cast aluminum
- Base cover: Four (4) individual bolt covers provided, painted to match pole and base finish
- Pole cap: Pole shaft supplied with removable cover when applicable; Tenon and post-top configurations also available
- Hand hole: Rectangular 3x5 aluminum hand hole frame (2.38" x 4.38" opening); Mounting provisions for grounding lug located behind gasketed cover
- Anchor bolts: Four galvanized anchor bolts provided per pole with minimum yield of 55,000 psi (ASTM F1554). Galvanized hardware with two washers and two nuts per bolt for leveling
 - Anchor bolt part numbers: 3/4 x 30 x 3 — TAB-30-M38
1 x 36 x 4 — TAB-36-M38

- Durable thermoset polyester powder coat paint finish with nominal 3.0 mil thickness
- Powder paint finish coat available in 12 standard colors; Custom colors available; RAL number preferable

INSTALLATION

- Lighting installations for side and top mounting of luminaires with effective projected area (EPA) not exceeding maximum allowable loading of the specified pole in its installed geographic location



currentlighting.com/beacon

© 2024 HLI Solutions, Inc. All rights reserved. Information and specifications subject to change without notice. All values are design or typical values when measured under laboratory conditions.

Page 1 of 15
Rev 03/27/24
BEA_VIPERSPEC_R09



currentlighting.com/beacon

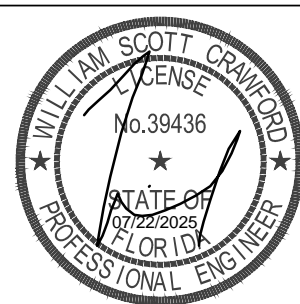
© 2024 HLI Solutions, Inc. All rights reserved. Information and specifications subject to change without notice. All values are design or typical values when measured under laboratory conditions.

Page 1 of 8
(Rev 06/19/24)
BEA_SSA-B-Poles_spec_R04

LIGHTING CUT SHEETS AND NOTES

1 SCALE: NTS

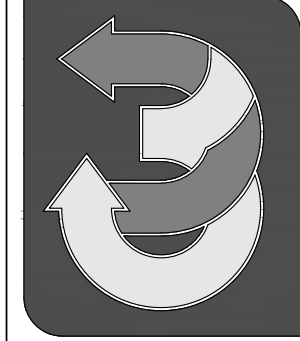
TO THE BEST OF THE ENGINEER'S KNOWLEDGE, SAID PLANS AND SPECIFICATIONS COMPLY WITH THE APPLICABLE BUILDING CODES AND THE APPLICABLE MINIMUM FIRE SAFETY STANDARDS AS DETERMINED IN ACCORDANCE WITH CHAPTERS 553 AND 633, FLORIDA STATUTES



WM. SCOTT CRAWFORD
P.E. 39436

MECHANICAL
ELECTRICAL
PLUMBING
& FIRE

CRAWFORD,
WILLIAMS
ENGINEERING, Inc.
CA 7029
6989 PROFESSIONAL PKWY. E.
SARASOTA, FLORIDA 34240
tel (941) 907-0103 fax (941) 907-0152



A PHOTOMETRIC PLAN FOR:
EPIPHANY CATHEDRAL
CATHOLIC CHURCH
PARKING LOT EXPANSION
225 N. HARBOR VENUE, FLORIDA

LIGHTING CUT
SHEETS AND NOTES
© 2024 CRAWFORD WILLIAMS ENGINEERING, INC.

Revisions:	12/10/2024
QTY COMMENTS	07/22/2024
SITE UPDATE	

Project No:	-
Drawn:	GAC
Checked:	WSC
Scale:	
Date:	07.22.2024

Sheet No.:

E2.00