

# Fox Lea Farm Water Table Monitoring and Mitigation Plan



DAVID J. BROWN, P.G.



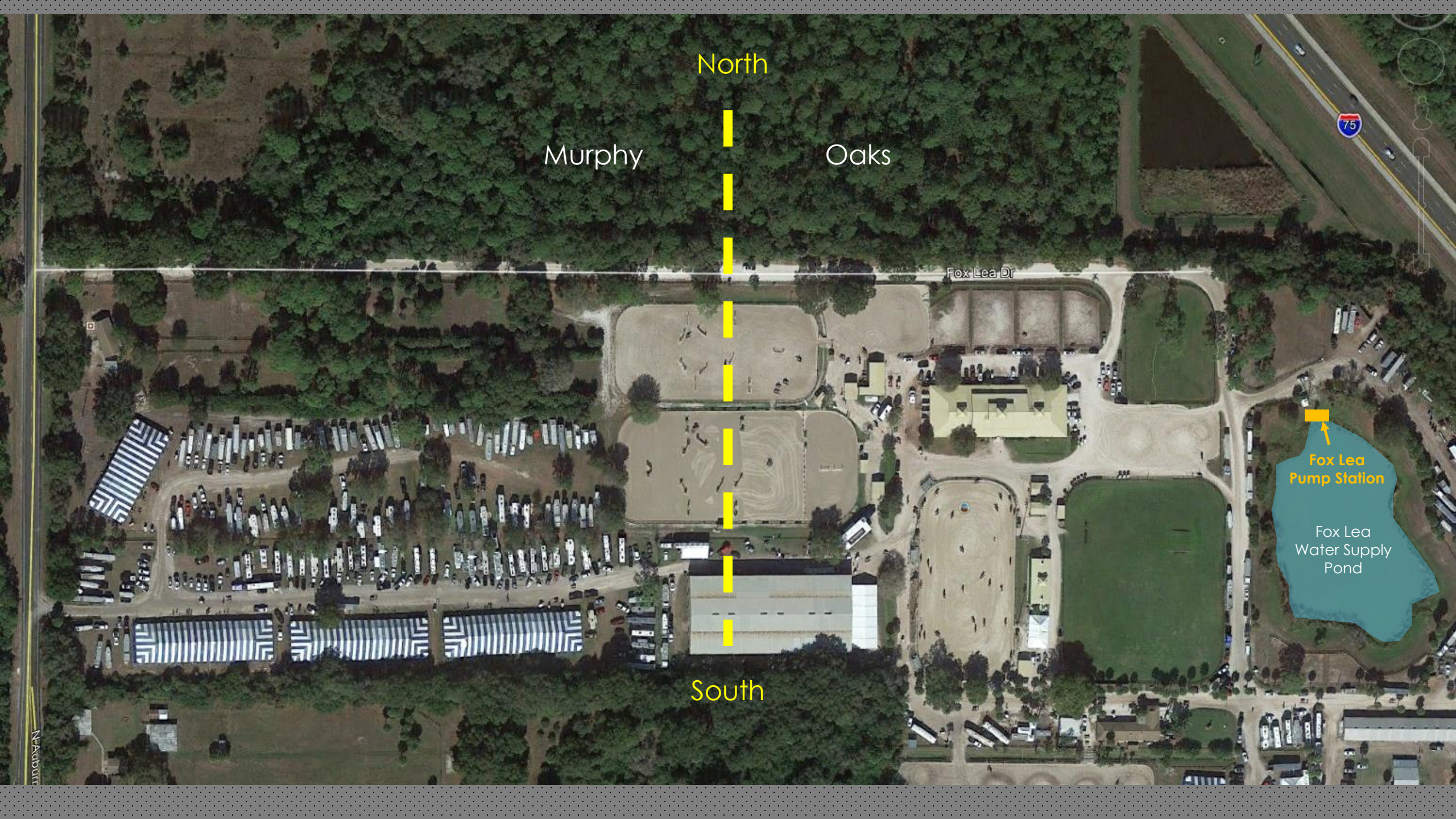
**Progressive Water Resources**

*Integrated Water Resource Consultants*









North

Murphy

Oaks

Fox Lea Dr

Fox Lea  
Pump Station

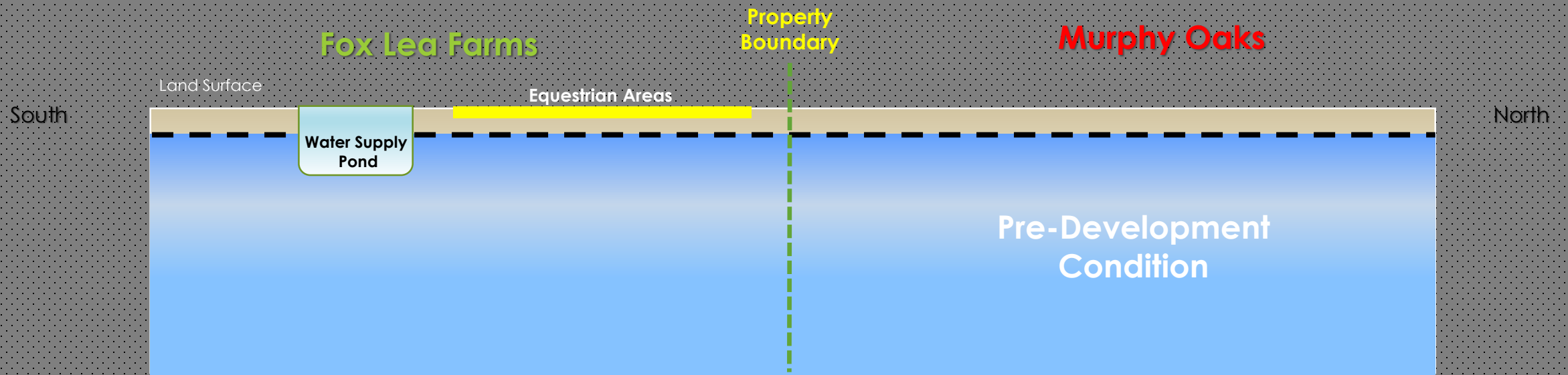
Fox Lea  
Water Supply  
Pond

South

N. Auburn

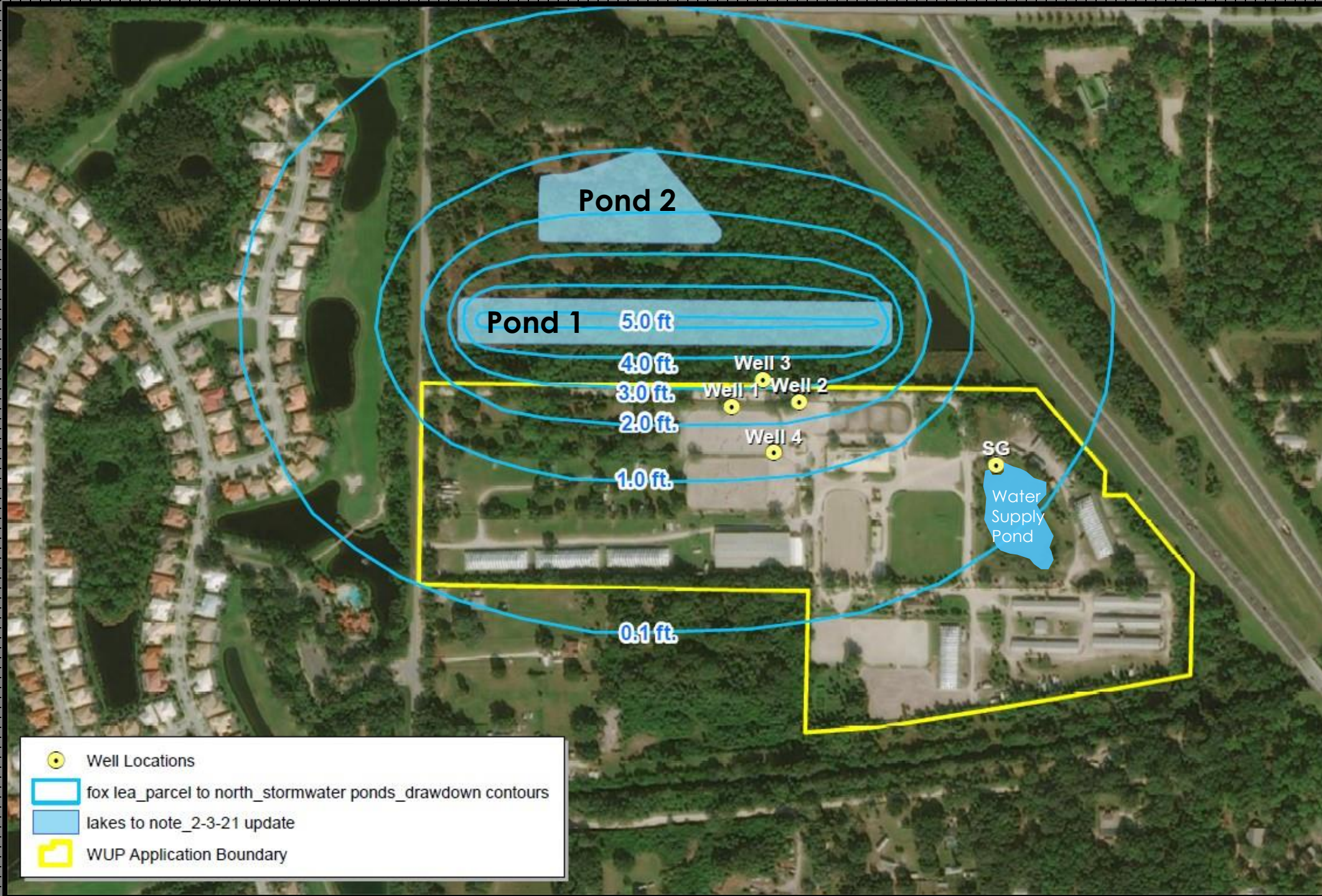


## Generalized Cross-Section (looking west)



**Starting Conditions**

Drawdown at  
Day 42



Well Locations



fox lea\_parcel to north\_stormwater ponds\_drawdown contours

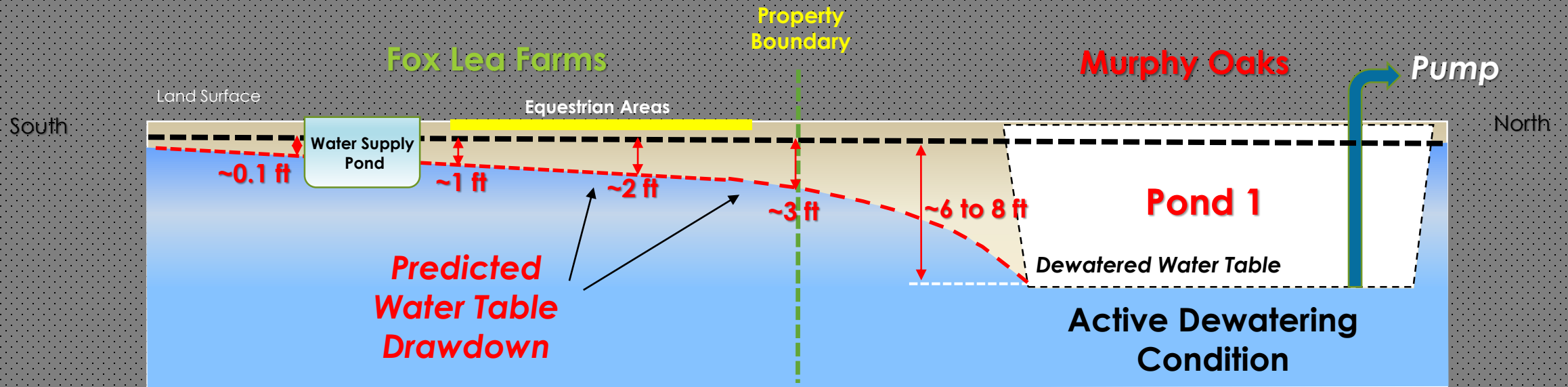


lakes to note\_2-3-21 update



WUP Application Boundary

## Generalized Dewatering Cross-Section (looking west)



Elevations are Not to Scale

## Active Dewatering



# Fox Lea's Stipulation - Definition of Terms:

## Compliance Levels

The Dewatering Model's site-specific water table levels (drawdown) for the water table monitoring wells shall be referred to collectively as the "**Compliance Levels.**" The Developer shall not allow water table measurements at any of the water table monitoring wells to be depressed below the Compliance Levels.

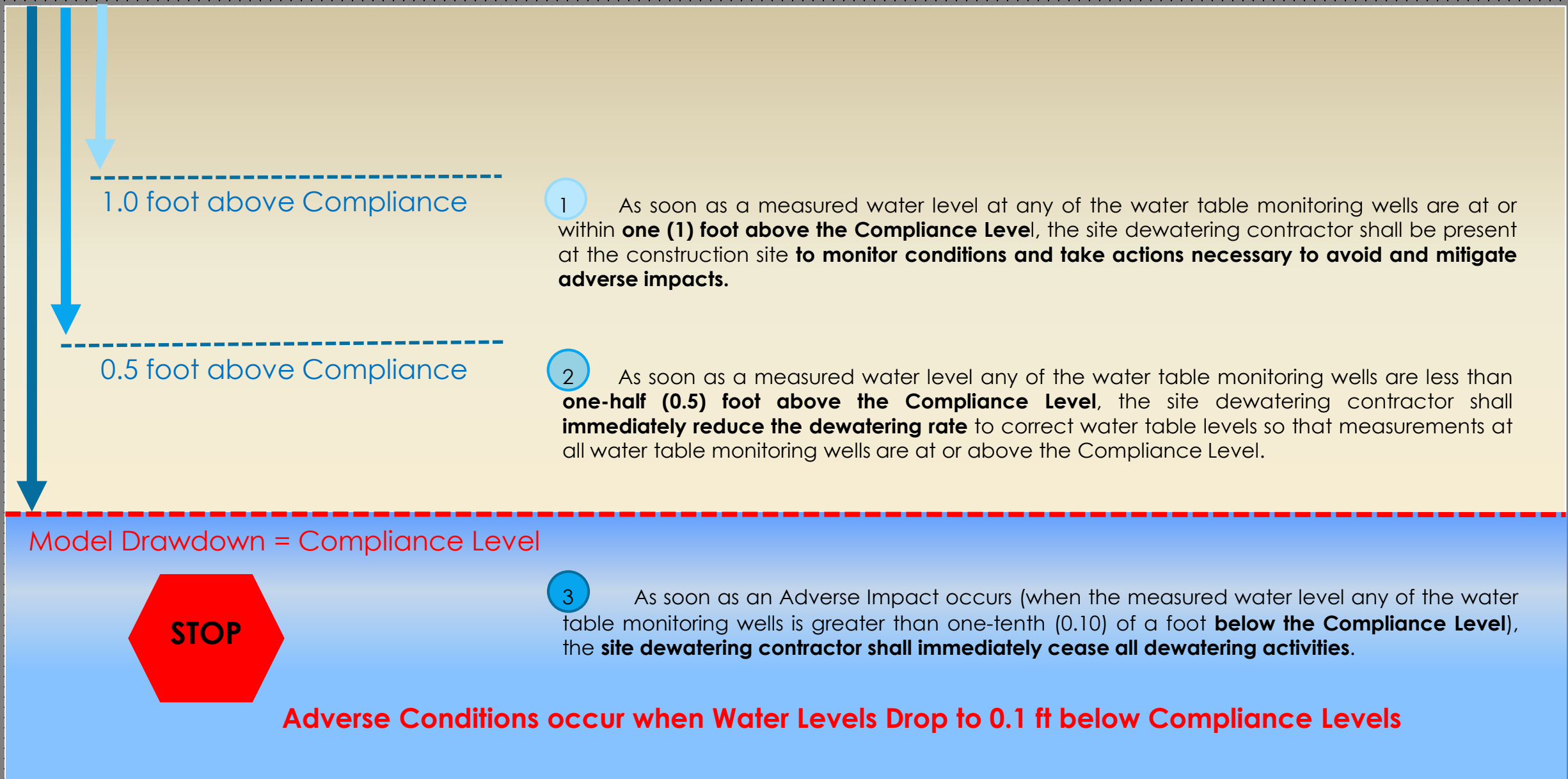
## Adverse Impacts

An "Adverse Impact" is deemed to occur whenever the measured water table level at any of the water table monitoring wells is **greater than one-tenth (0.10) of a foot below the Compliance Level** (i.e., one-fifteenth (0.15) of a foot below the Compliance level). At all times, the Developer should maintain water table levels at all water table monitoring wells at, or above, Compliance Levels in order to avoid an Adverse Impact.

## Avoidance and Mitigation of Adverse Impacts

The parties agree that once a measured water level at any of the water table monitoring wells decreases to within one (1) foot above the Compliance Level, it indicates that the present dewatering rate is likely to cause water levels to continue to decrease if onsite monitoring of dewatering rates does not occur. **The intent of these provisions is only to require the site dewatering contractor to be present onsite to monitor and adjust dewatering rates, as necessary, so that all water levels do not continue to decrease to an Adverse Impact level.** Therefore, so long as all measured water levels at all water table monitoring wells are greater than one (1) foot above the Compliance Level, onsite monitoring shall not be required.

## Fox Lea Stipulation – Water Table Monitoring and Mitigation Plan

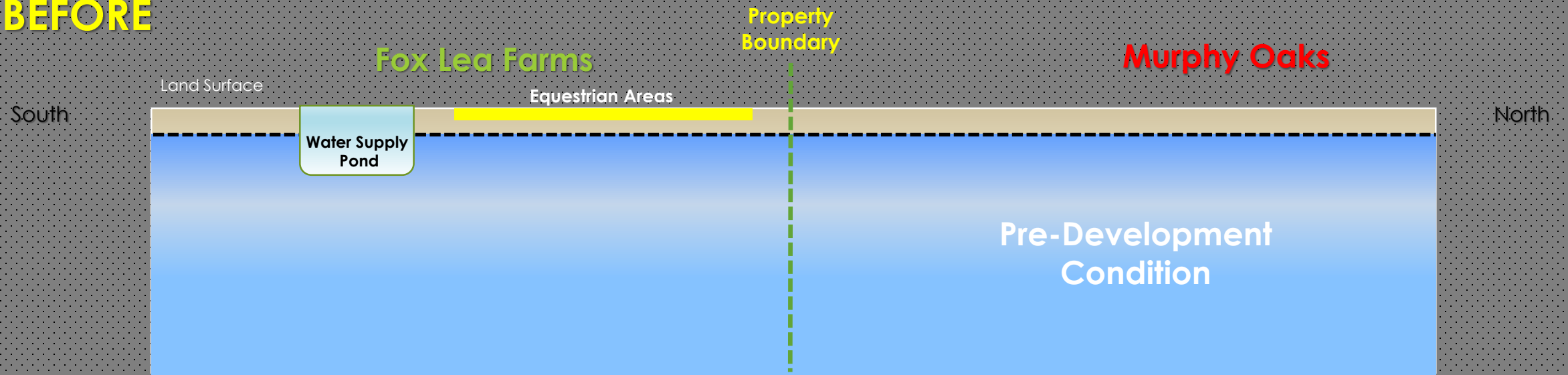




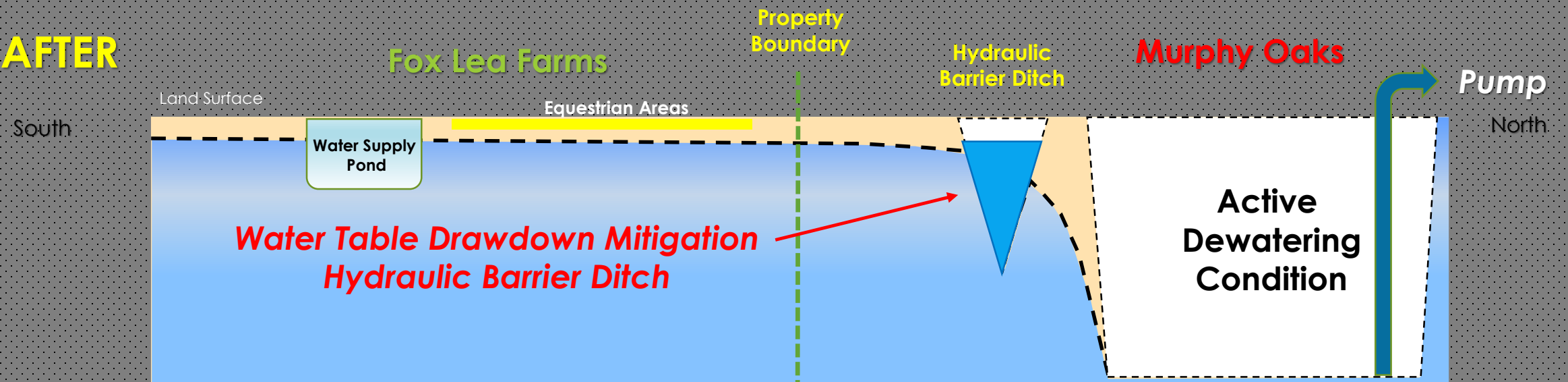
Thank You

# Generalized Dewatering Cross-Section (looking west)

**BEFORE**



**AFTER**



Elevations are Not to Scale









# Windham Stipulation – Surficial Aquifer System Monitoring and Mitigation Plan

