

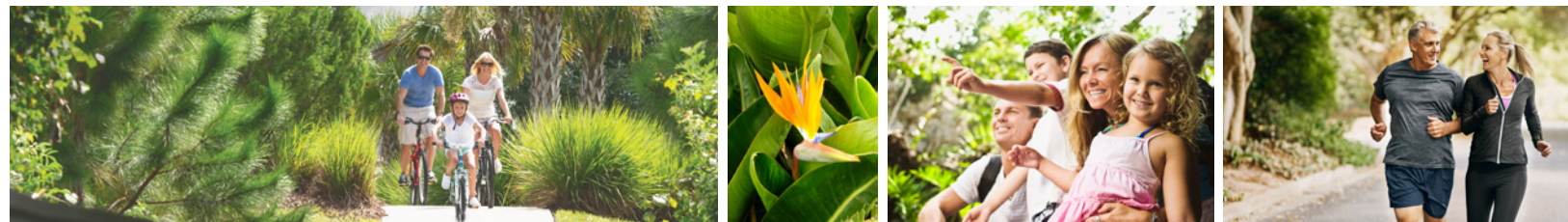
# LAUREL ROAD

# EXPANSION

PROGRESS REPORT  
9/12/23

Presented by:  
THE ECONOMIC STIMULUS WORKING GROUP





# LAUREL ROAD EXPANSION

## PROGRESS REPORT

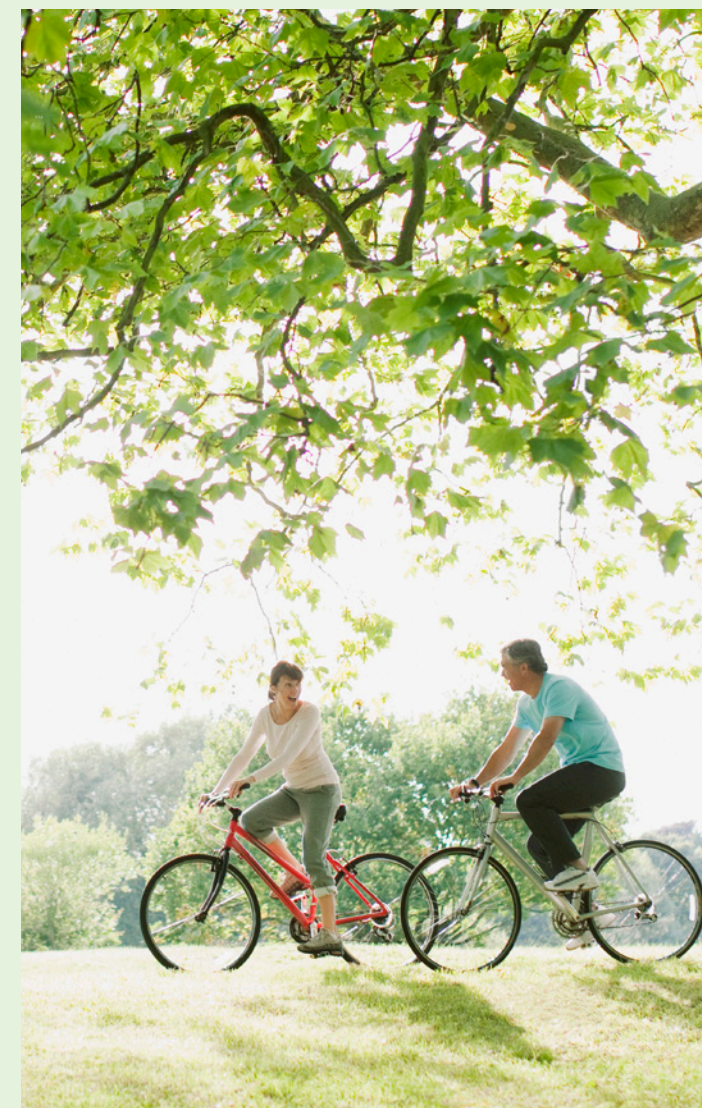
### UPDATE AS TO THE PRE-CONSTRUCTION PROCESS

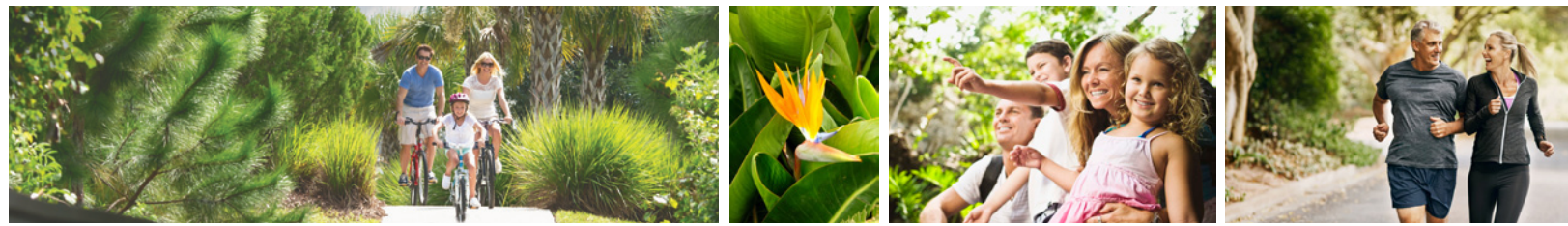
- Progress and complications on the right-of-way
- To bring you up to date on the budget
- Discussion of next steps

---

We are working to complete the engineering to get Laurel Road under construction.

---





# LAUREL ROAD EXPANSION

## PROGRESS REPORT

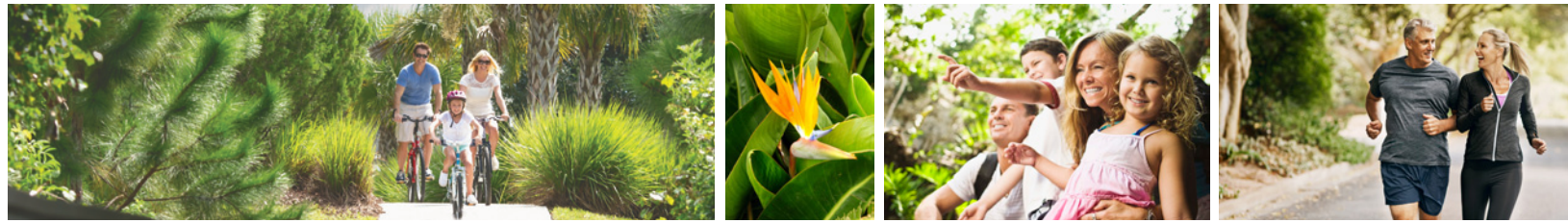
### PRELIMINARY BUDGET FOR LAUREL ROAD

Construction of the road (ESWG)	\$10,000,000
Joint use ponds (other than right-of-way acquisitions)	\$1,300,000
Right-of-Way	\$2,878,000
Lighting (ESWG)	IN BID
Costs of wetland mitigation credits	\$180,000
Landscaping and irrigation (ESWG)	\$400,000
Management fees 6% (ESWG)	\$642,000
Contingency	\$600,000
<b>ESTIMATED TOTAL</b>	<b>\$16,000,000</b>

\*Preliminary budget a guide to provide general estimate and is subject to change.







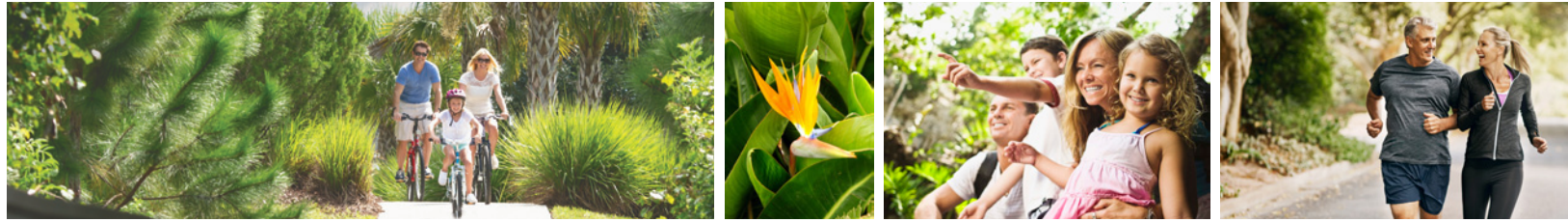
# LAUREL ROAD EXPANSION

## PROGRESS REPORT

### EXAMPLES OF LANDSCAPE DESIGN AND LIGHTING



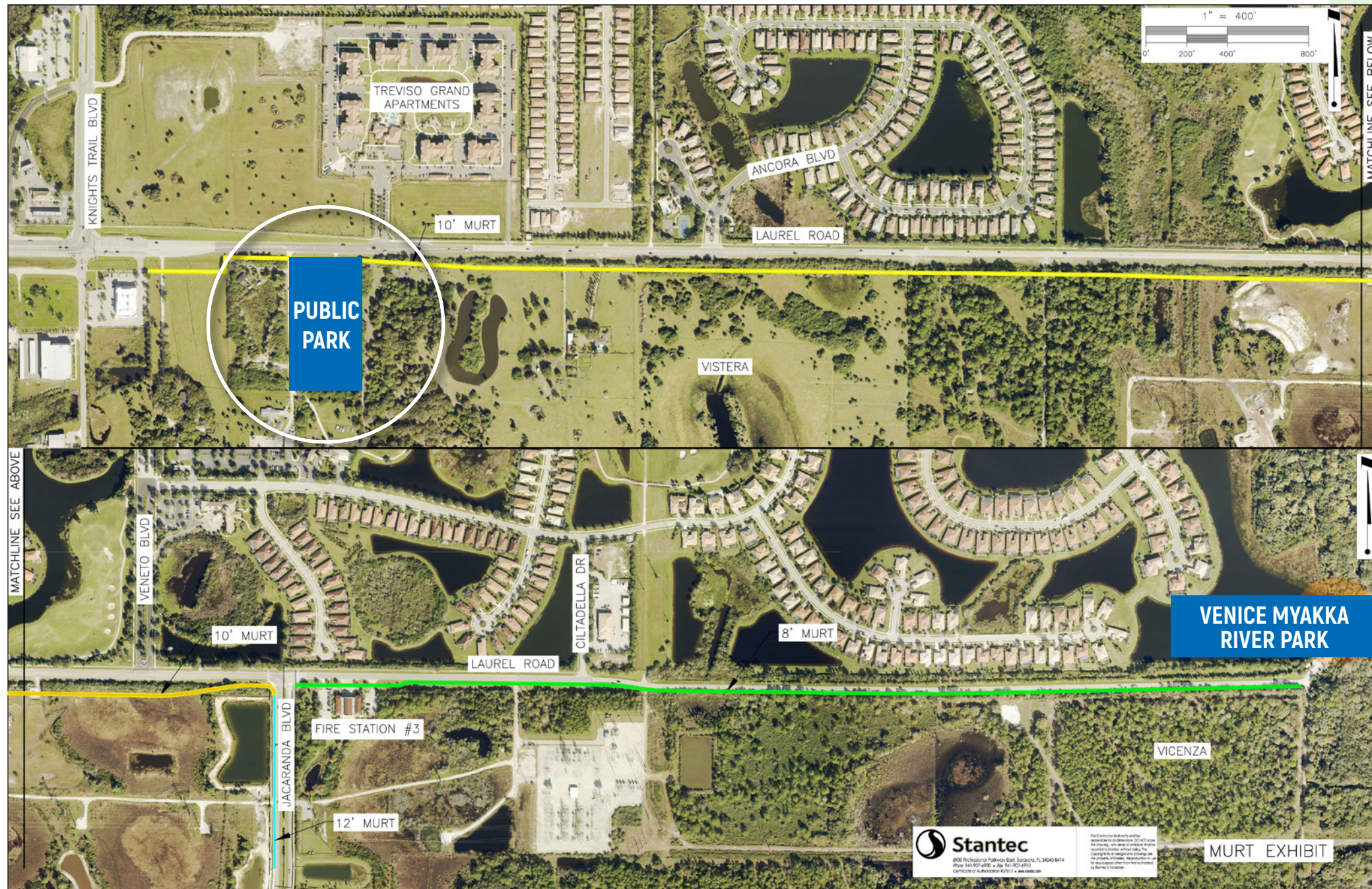




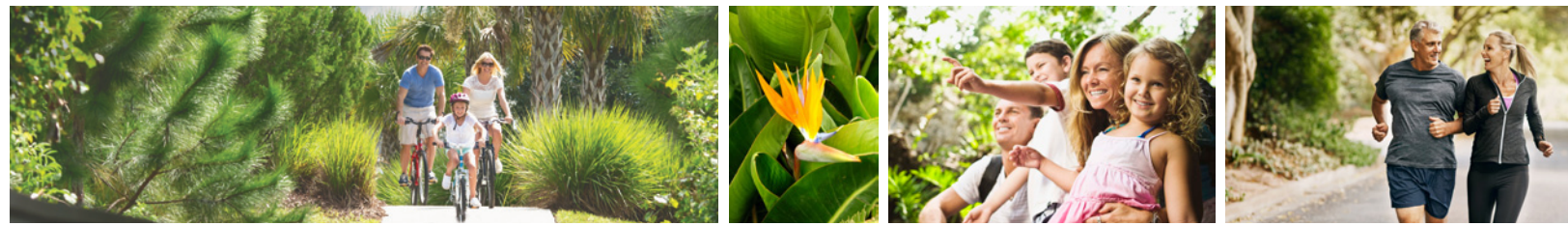
# LAUREL ROAD EXPANSION

## PROGRESS REPORT

### LINEAR PARK AND MULTI-USE RECREATIONAL TRAIL



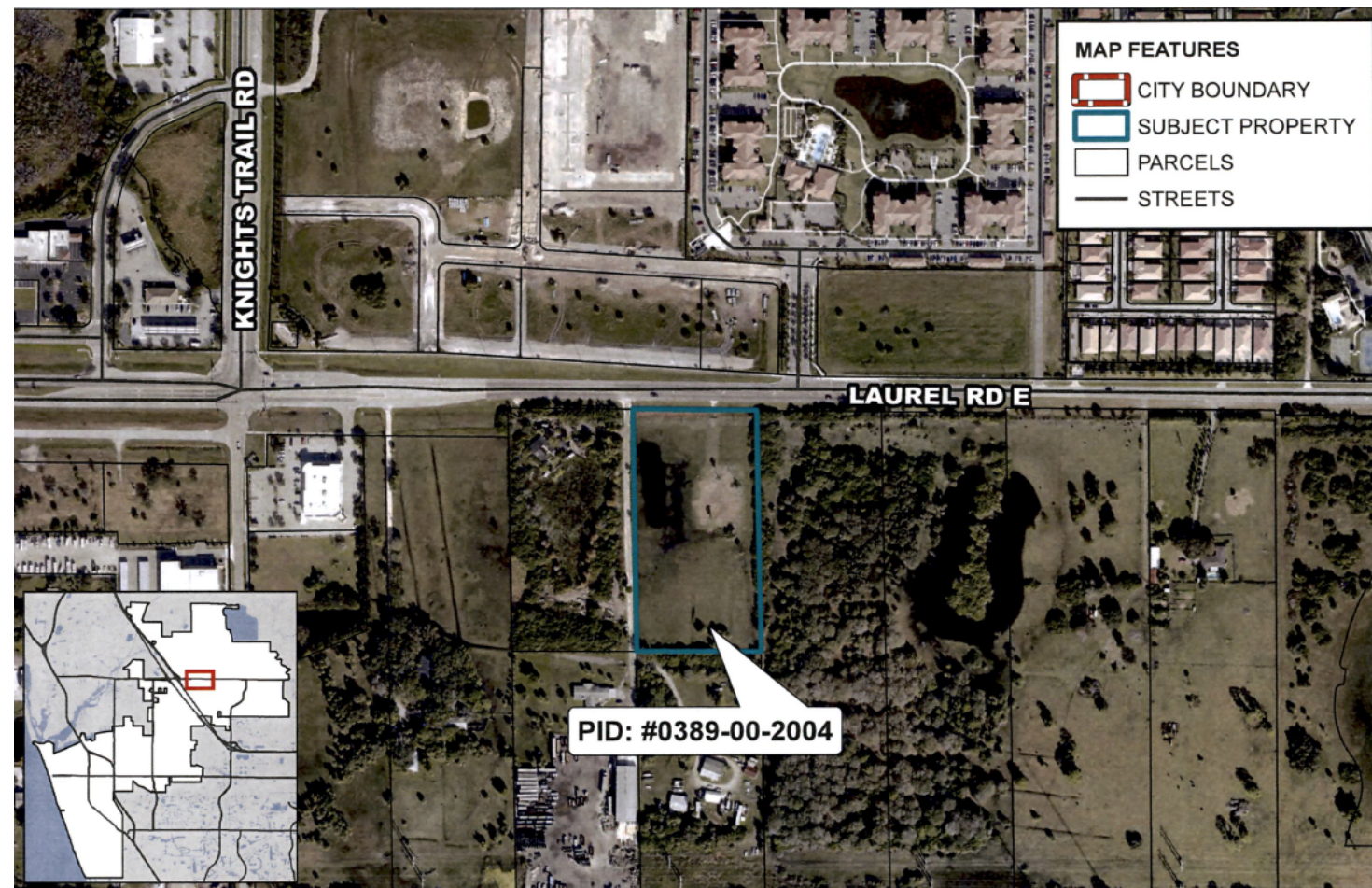




# LAUREL ROAD EXPANSION

## PROGRESS REPORT

### PLAN FOR THE PARK (THE WEST ANCHOR) IN THE WORKS



Linear Park and MURT to tie in with park planned

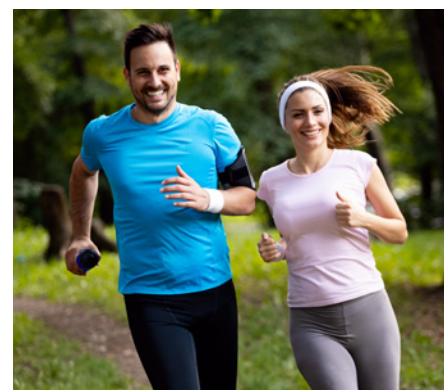
Park in the works: Northeast Park Design Build Agreement recently finalized.

Conceptual plan to be presented in near future.

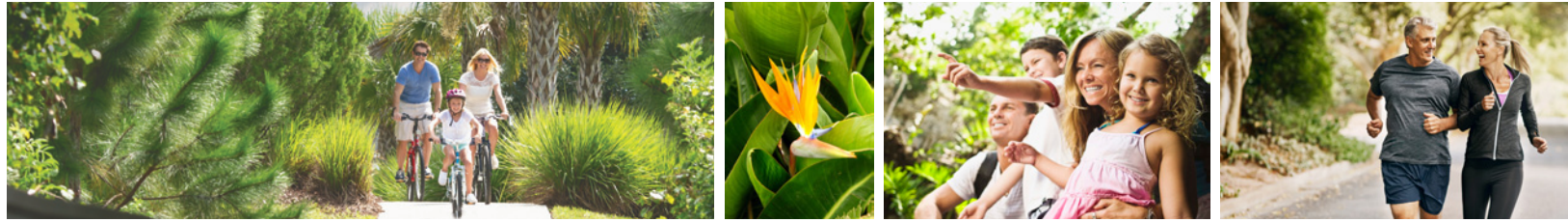
City projected construction complete by Dec. 2024

Based on city evaluation and public outreach, the desired amenities include:

- Multi-use trail with interactive fitness stations ready for future connection to the proposed Laurel Road Linear Park
- Covered and/or uncovered pickleball courts
- Covered children's playground
- Dog Park
- Public Restroom
- Utilities
- Parking
- Open natural space with benches



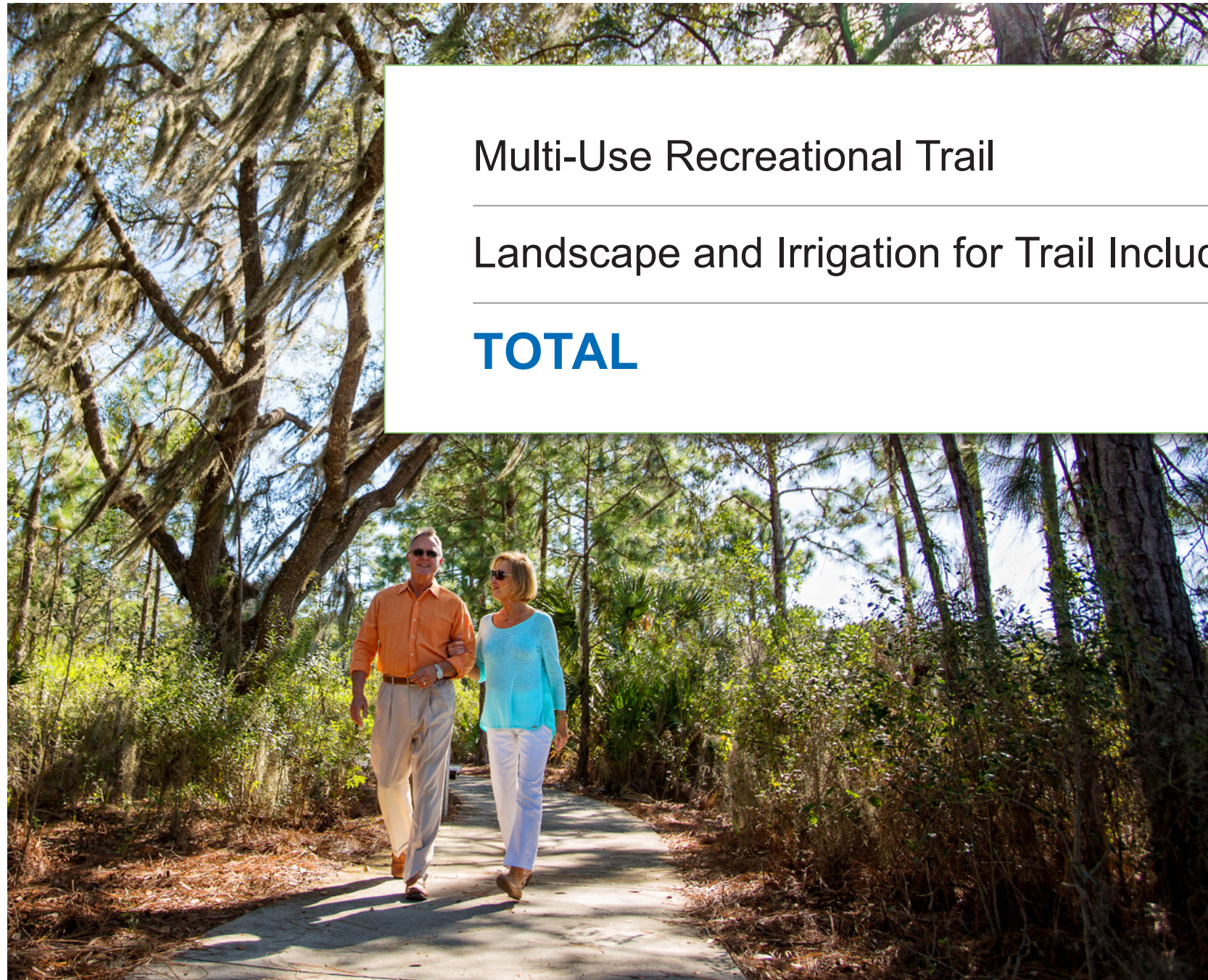




# LAUREL ROAD EXPANSION

## PROGRESS REPORT

### PRELIMINARY BUDGET FOR LINEAR PARK (FROM PARK IMPACT FEES)



Multi-Use Recreational Trail

\$600,000

Landscape and Irrigation for Trail Including Enhanced Trail Features

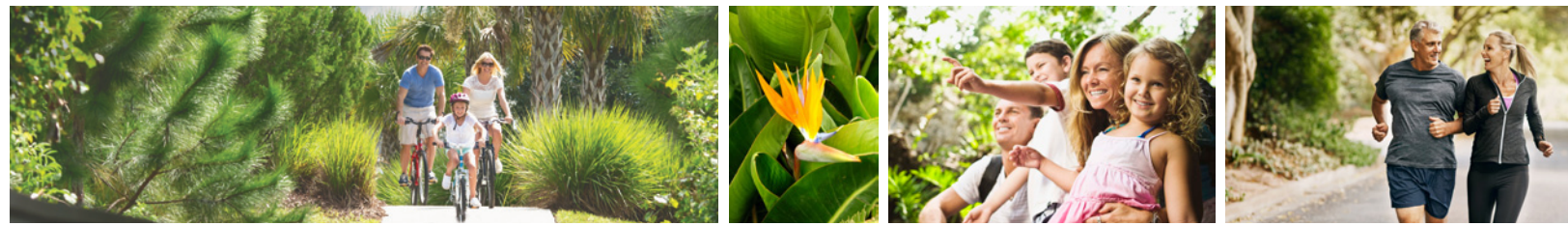
\$300,000

**TOTAL**

**\$900,000**







# LAUREL ROAD EXPANSION

## PROGRESS REPORT

### FUNDING DISCUSSION

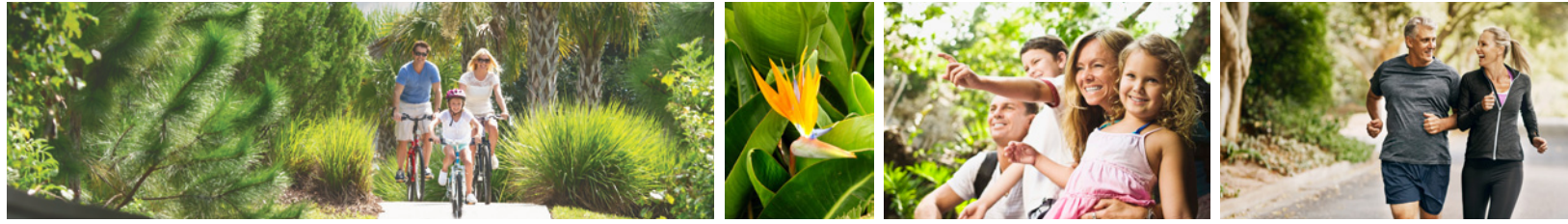
- |  |             |
|--|-------------|
| 1. Grant from Florida Legislature  | \$8,000,000 |
| 2. Sarasota County Mobility Fees collected in the City of Venice   | \$8,000,000 |
| 3. Sarasota County Park Impact Fees collected in the City of Venice or requesting grant from the Florida Sun Trail Program | \$900,000   |
| 4. Request Sarasota County to reallocate resurfacing   | \$1,900,000 |

We think there are ample funds to build this road at this time.

We need to encumber the \$8 million state grant by the late Spring of 2024 so that it is not lapsed and re-appropriated.





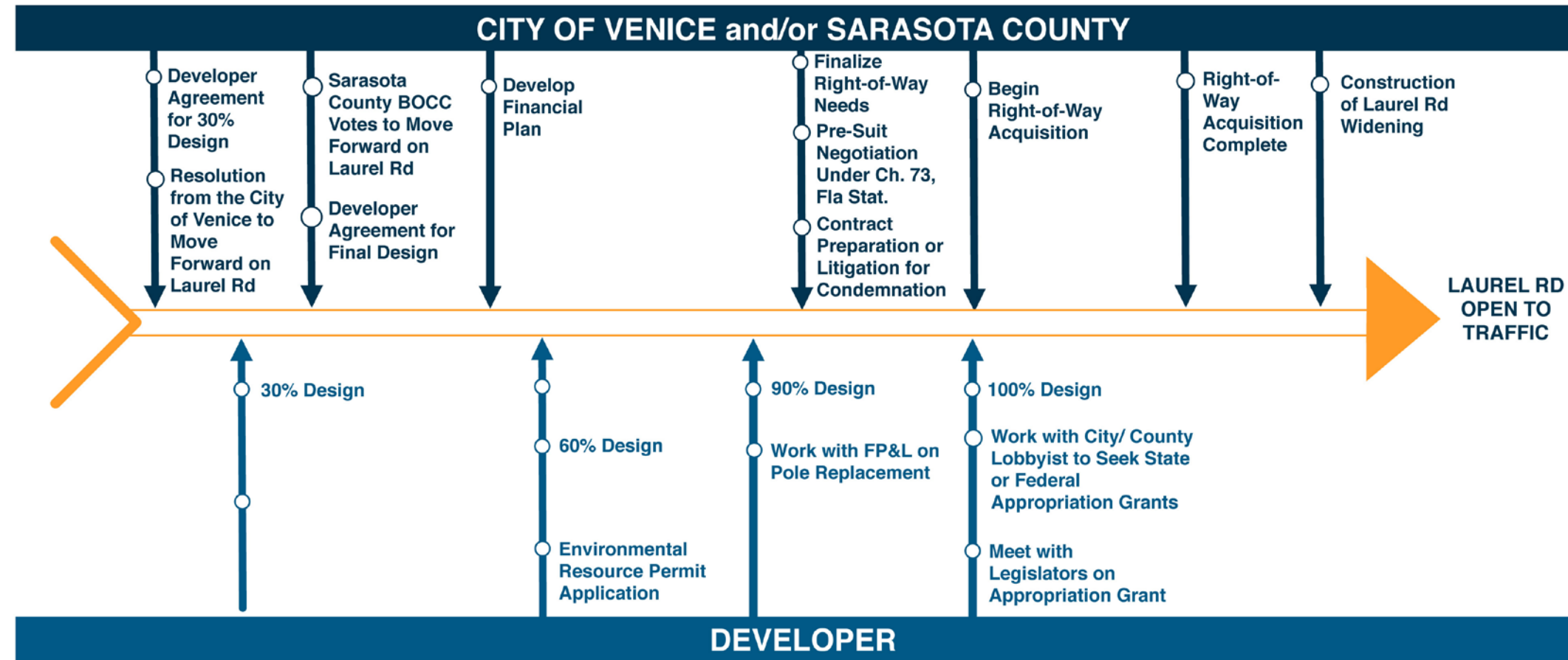


# LAUREL ROAD EXPANSION

## PROGRESS REPORT

### CRITICAL PATH

### LAUREL ROAD WIDENING COORDINATION PROGRESSION OUTLINE

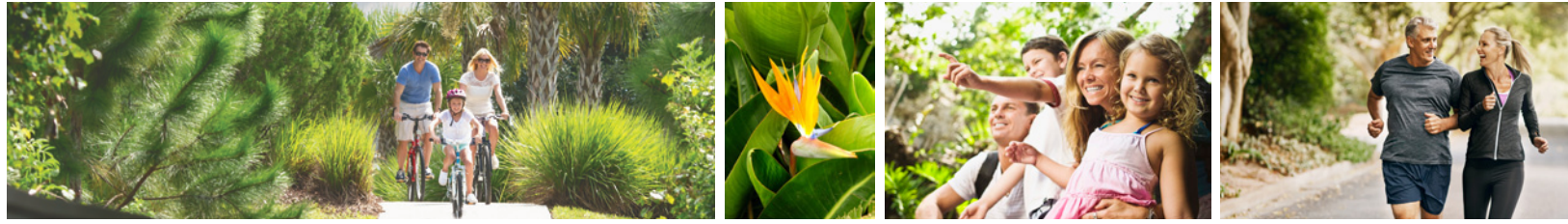


The above activities are intended to outline the coordination progression between the City, County and/ or Developer and are not intended to dictate progress. All Venice actions would also have to be authorized by Sarasota County.

\*Schedule analysis will be needed to produce a project specific schedule.



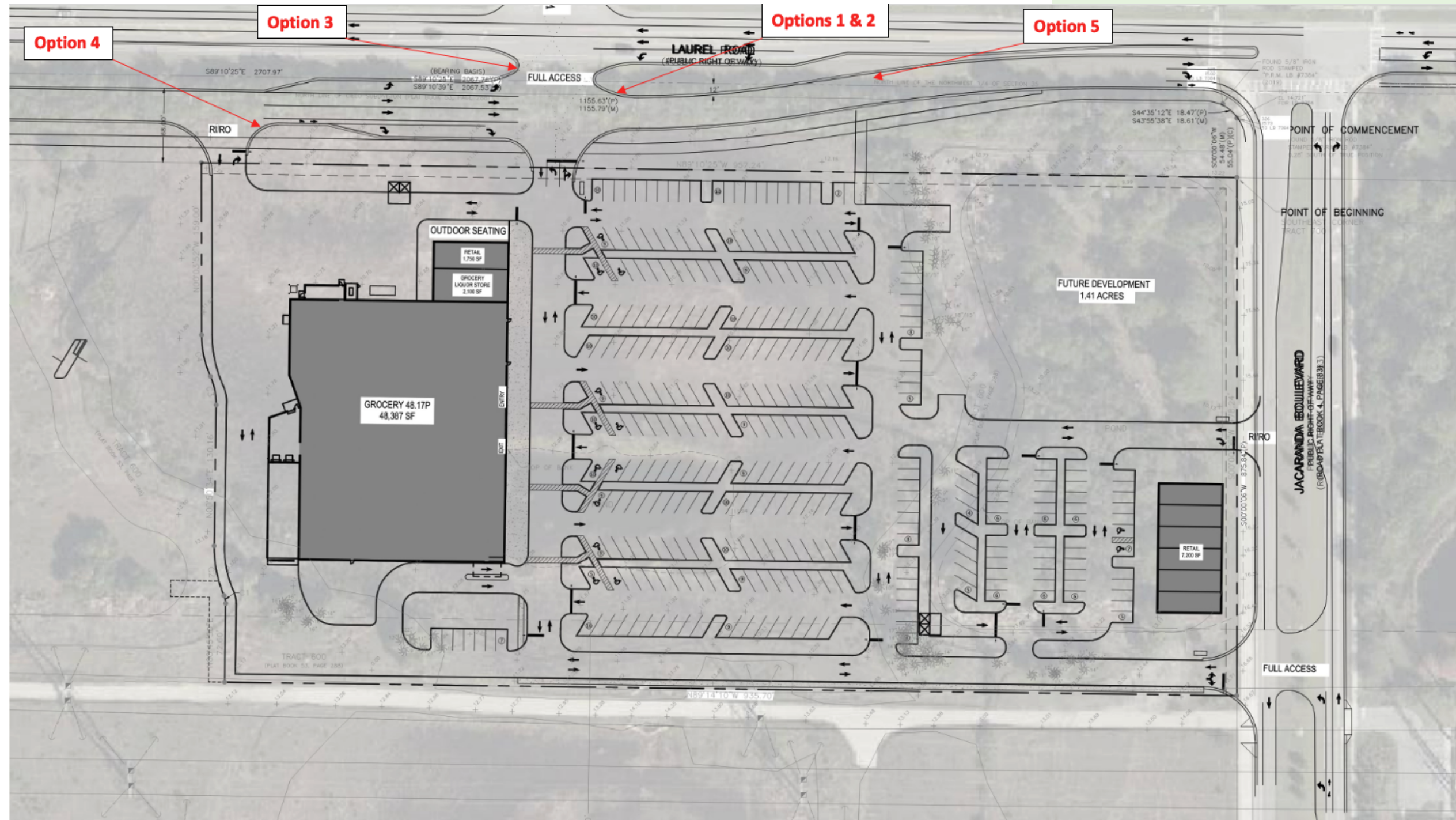




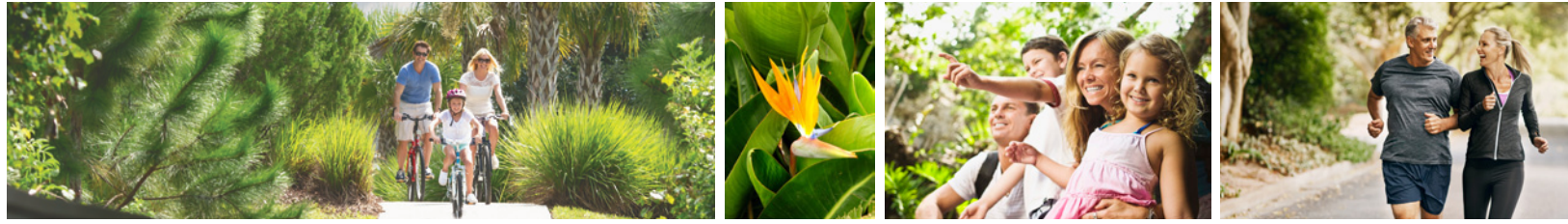
# LAUREL ROAD EXPANSION

## PROGRESS REPORT

### INTERSECTION OPTIONS







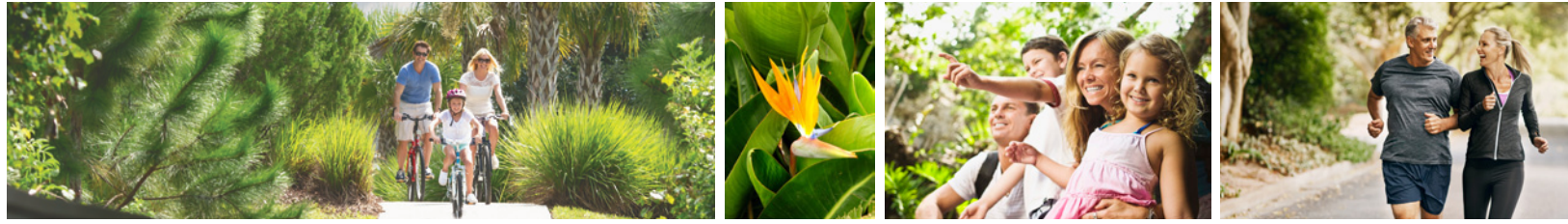
# LAUREL ROAD EXPANSION

## PROGRESS REPORT

### OPTION 1 / EAST SIDE INTERSECTION RRFB'S







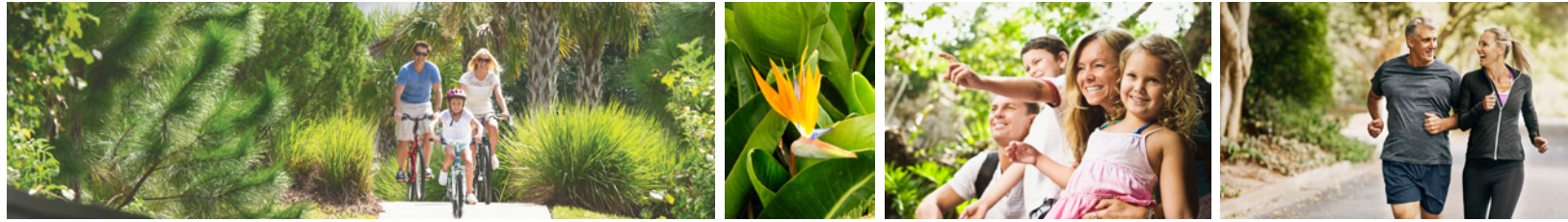
# LAUREL ROAD EXPANSION

## PROGRESS REPORT

### OPTION 2 / EAST SIDE INTERSECTION HAWK







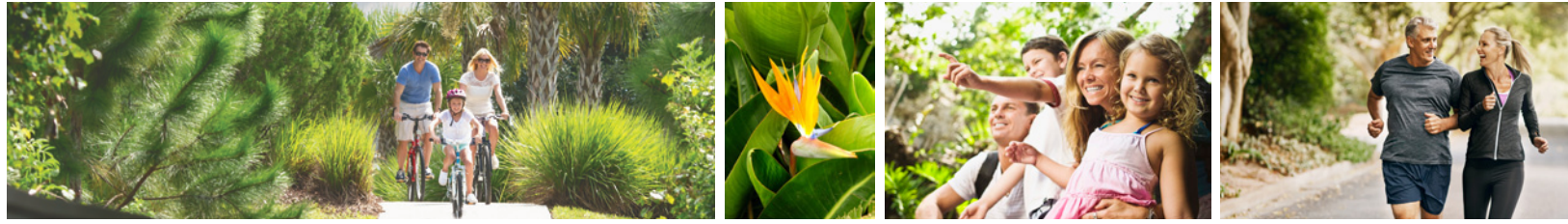
# LAUREL ROAD EXPANSION

## PROGRESS REPORT

### OPTION 3 / WEST SIDE INTERSECTION RRFB'S







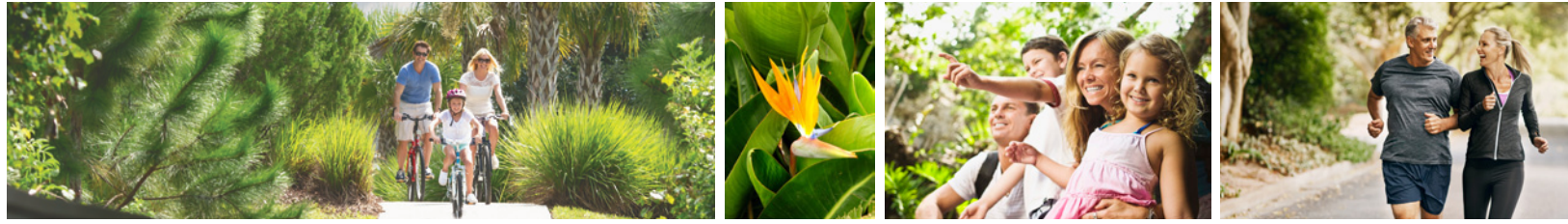
# LAUREL ROAD EXPANSION

## PROGRESS REPORT

### OPTION 4 / MID-BLOCK WEST RRFB'S







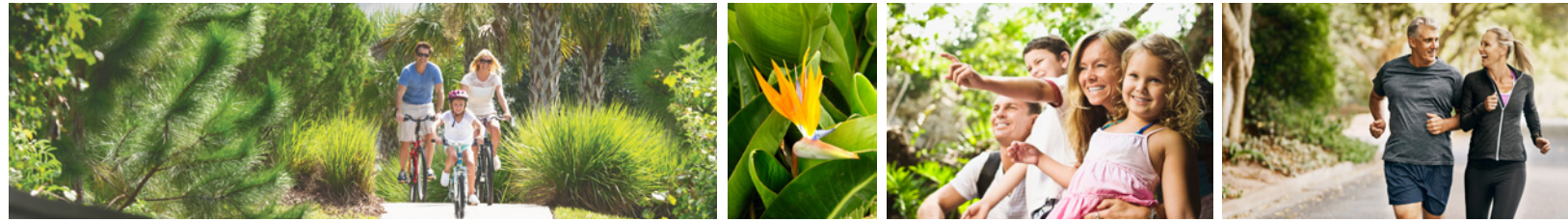
# LAUREL ROAD EXPANSION

## PROGRESS REPORT

### OPTION 5 / MID-BLOCK EAST RRFB'S







# LAUREL ROAD EXPANSION

## PROGRESS REPORT

### IN CONCLUSION



**Thank you for this opportunity to provide an update.**

90% + design & engineer phase

We are awaiting FDOT and SWFWMD permits.

Planning to phase construction to account for caracara mating season per DEP permit requirement

Interlocal and shared use agreements are being drafted

Pre-bid meeting update

Working to determine actual costs

Would like to start construction by January 2024