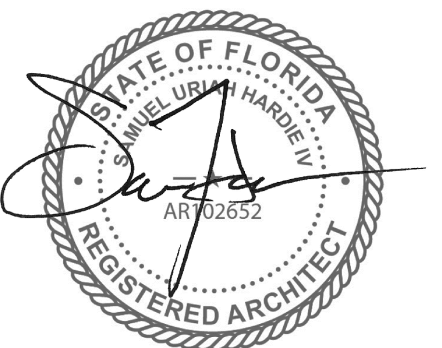


CONSULTANTS



7085 SOUTH TAMAMI TRAIL, SARASOTA, FL 34231  
PHONE: (941) 559-1552 FAX: (941) 559-1553



SAMUEL U. HARDIE IV, AIA  
AR12652

PROJECT:  
NEW DETACHED ACCESSORY GARAGE FOR:  
ALOHA CONDOS  
1329 TARPON CENTER DRIVE  
VENICE, FLORIDA

COPYRIGHT © 2026 BEEBE DESIGN STUDIO, ARCHITECTS, INC.

ISSUED FOR:  
SITE & DEVELOPMENT

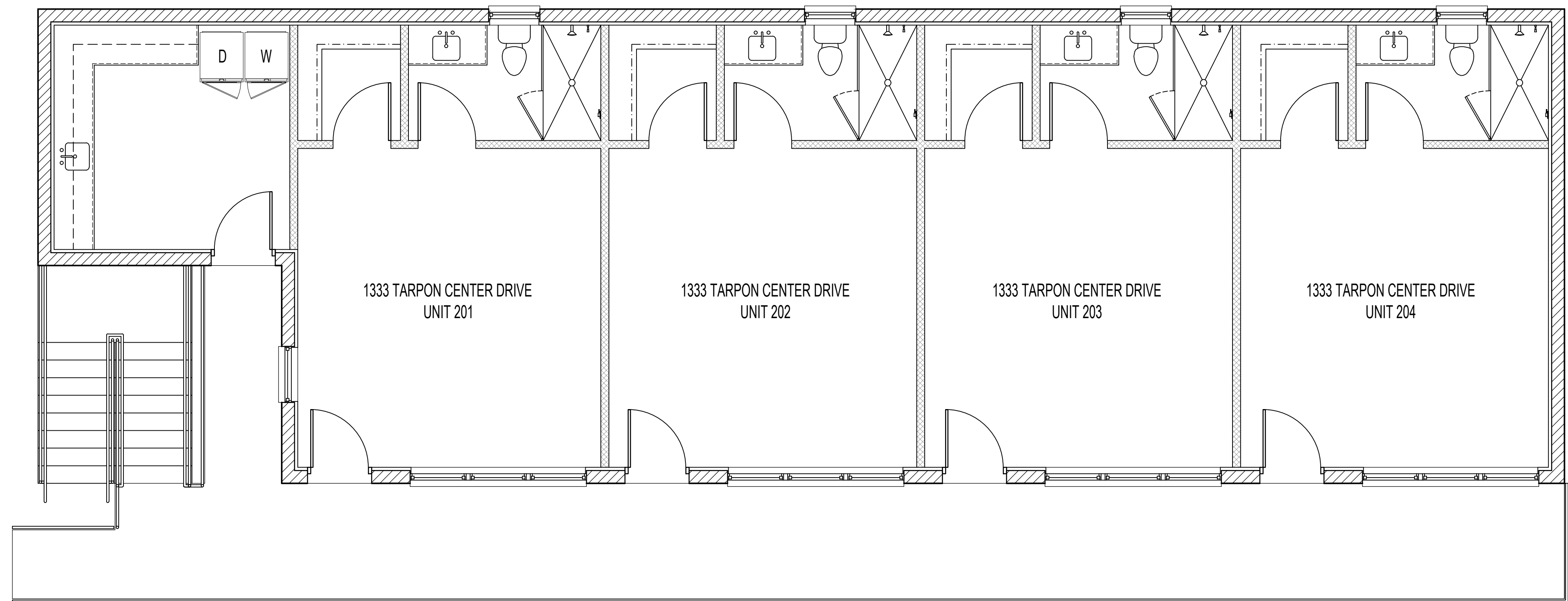
PROJECT No.: 2512

No.	REVISION	DATE
△	S&D COMMENTS	04.27.2026
△		
△		
△		
△		
△		

DRAWN BY: CJC  
CHECKED BY: SUH  
DWG No.: 2512\_SD2.0  
SCALE: 1/4"=1'-0"  
PLOT DATE: 04.27.2026

SHEET TITLE:  
FLOOR PLAN

SHEET NUMBER:  
**SD2.0**



**FLOOR PLAN**  
SCALE: 1/4"=1'-0"

1