

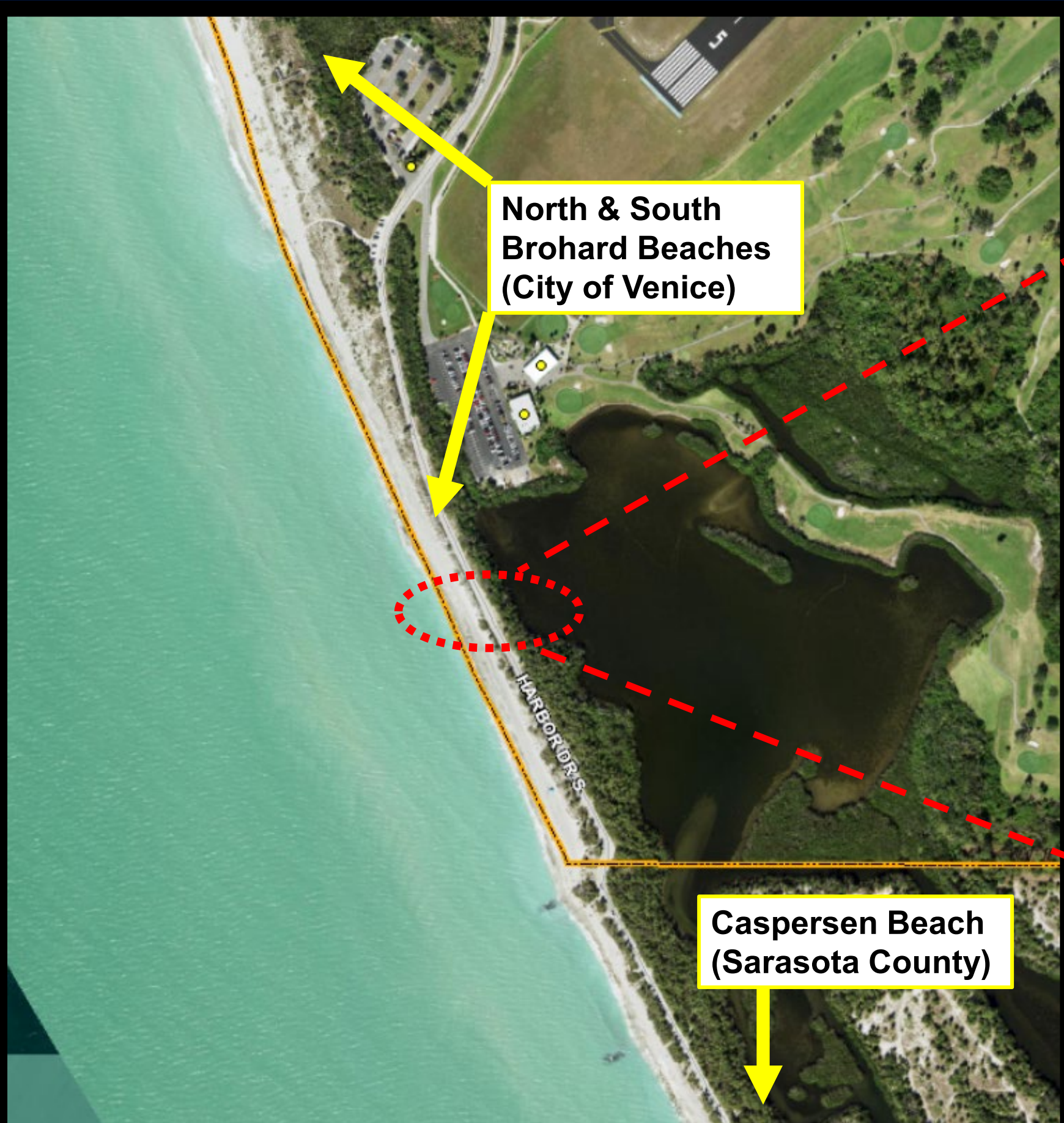


Brohard Beach Expanded Public Parking

James Clinch, Assistant City Manager

Ashlee Castle, Assistant Public Works Director

BACKGROUND



EXPANDED PUBLIC PARKING



- Additional Public Parking opportunities
- North Brohard Beach
- 100 ft. Wide Harbor Drive ROW (Sarasota County)
- Existing ROW Public Parking, Installed in 2014 with ROW Use Permit
- Included concrete driveways, gravel drive aisles, parking stops, crosswalks & landscaping

EXPANDED PUBLIC PARKING



- Expanding the existing parking design north and south
- Approximately 500 ft. North and South
- Will add 90-100 new beach parking spaces

EXPANDED PUBLIC PARKING



EXPANDED PUBLIC PARKING



- Concrete Driveways with Traffic Control Devices

EXPANDED PUBLIC PARKING



- Pedestrian Crosswalks and Landscaping

- Mutual benefit for increased public access to the City and County beaches
 - City to begin the design and permitting process
 - Requesting conceptual support for additional beach parking in the Harbor Drive S. ROW
-



QUESTIONS

